

LOS ANGELES COUNTY
DEPARTMENT OF PUBLIC WORKS
BENCH MARK LIST



LA MIRADA QUAD

2005 ADJUSTMENT
2005 BASELINE
NAVD 88 DATUM

PREFACE

The Department of Public Works level net is composed of more than 1,700 miles or 2720 kilometers of levels supporting in excess of 9,000 bench marks. Previously when a major readjustment of the net was undertaken, to emphasize the complete break with previous elevations, the CY, CG, & CL, series bench marks were re-labeled DY, DG, & DL, respectively.

Beginning in 1993 the baseline readjustment year will be indicated on baseline BM's only indicated below (*). Henceforth all BM numbers will be labeled as a Y, G, or L, series that will no longer indicate the major adjustment year.

To facilitate the adjustment, indexing and distribution of adjusted values of the net, the county territory was divided into 33 quads or areas. For the identification purposes each quad was given a name, viz., "Rosemead," "La Mirada," "Santa Fe," etc. When bench marks and elevations in these quads are used, the name must be included in the bench mark description, e.g.,

* BASELINE	90.057 L&BR IN CTR OF CB RET @ NE COR	Y 9191
(1990)	295.461 LA HABRA BLVD & VALLEY HOME AVE	
	10.7M N & 10.7M E/O C/L INT	

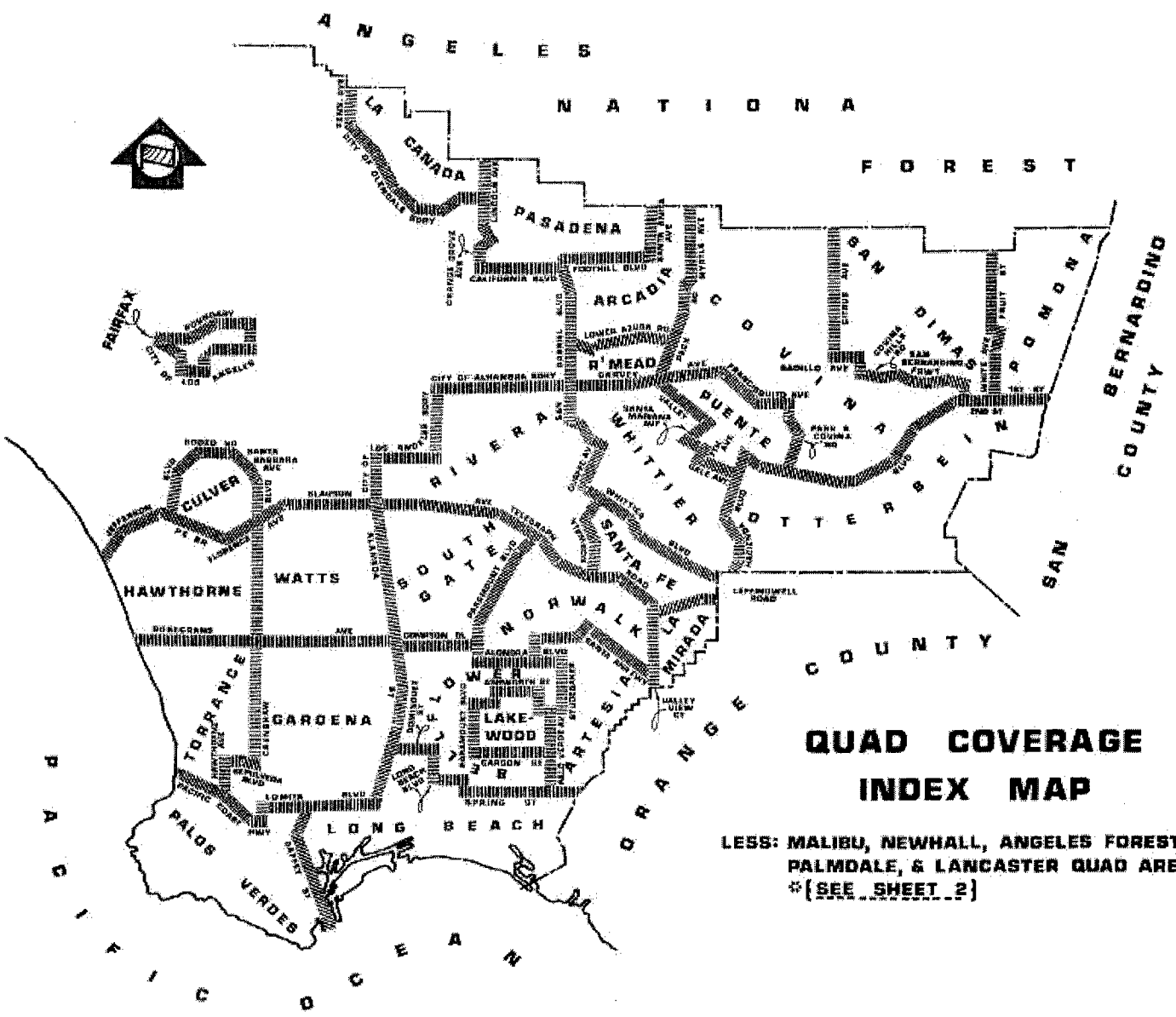
It is expected that this general adjustment will for the most part remain sound for 8 to 12 years. Updating constrained adjustments will continue in the future. When a quad is readjusted, new elevations will be published and the date of readjustment will be noted in the bench mark description. Two bench marks with different adjustment dates will not normally agree with each other.

The basic accuracy of the net is reflected by an indicated field probable error of plus or minus 4mm per kilometer of leveling as determined from the conditions of closure. However, many years of experience in vertical control in the greater Los Angeles basin and Antelope Valley indicate that because of varying degrees of subsidence and heaving, the true datum is recovered only by obtaining substantial agreement of a number of bench marks.

The users of this net are invited to assist in its maintenance by notifying this department of cases of obliteration, apparent mistakes in description or elevations, and proven disturbance of bench marks.

DATUM: North American Vertical Datum of 1988 (NAVD88)

Note: NAVD 1988 minus approximately 700mm
(2.3ft) equals Previous NGVD 1929
Datum. For more accurate equations at
individual bench marks refer to
previous publications.



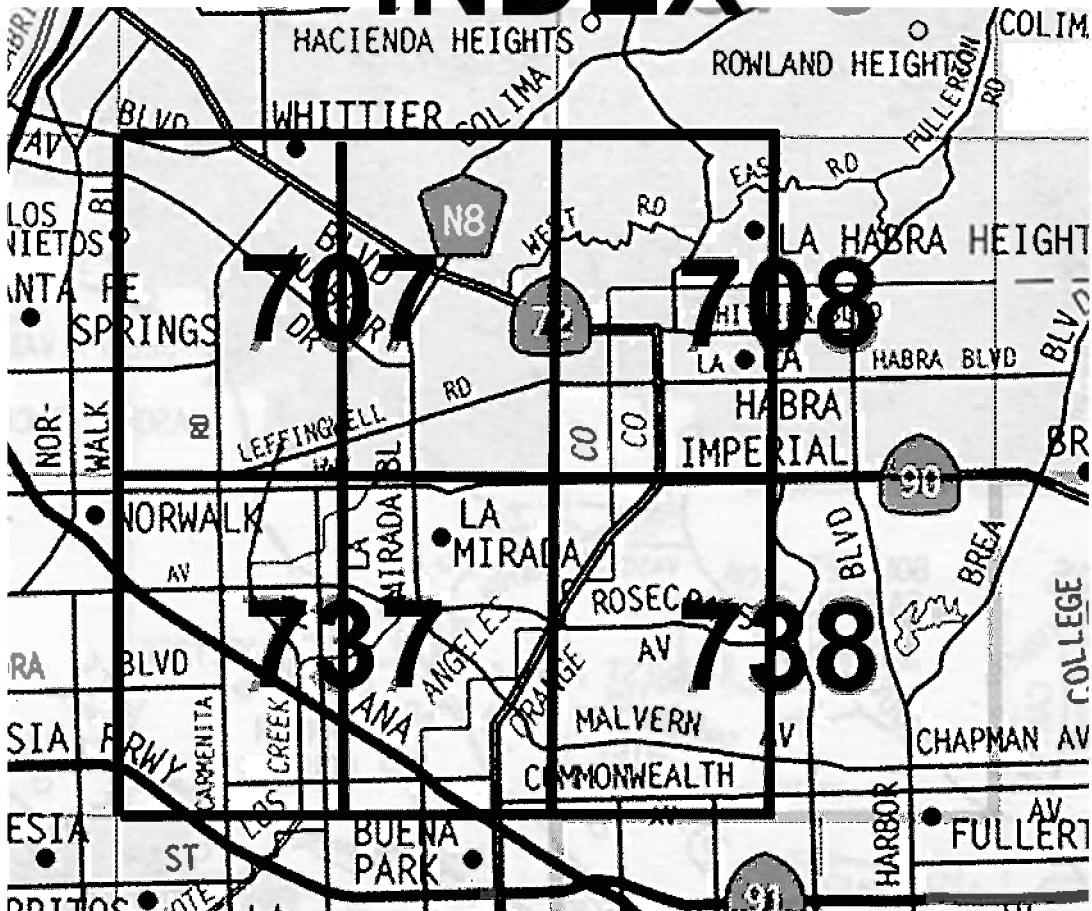
**QUAD COVERAGE
INDEX MAP**

LESS: MALIBU, NEWHALL, ANGELES FOREST,
PALMDALE, & LANCASTER QUAD AREAS.
* [SEE SHEET 2]

ABBREVIATIONS USED IN BENCH MARK LISTINGS

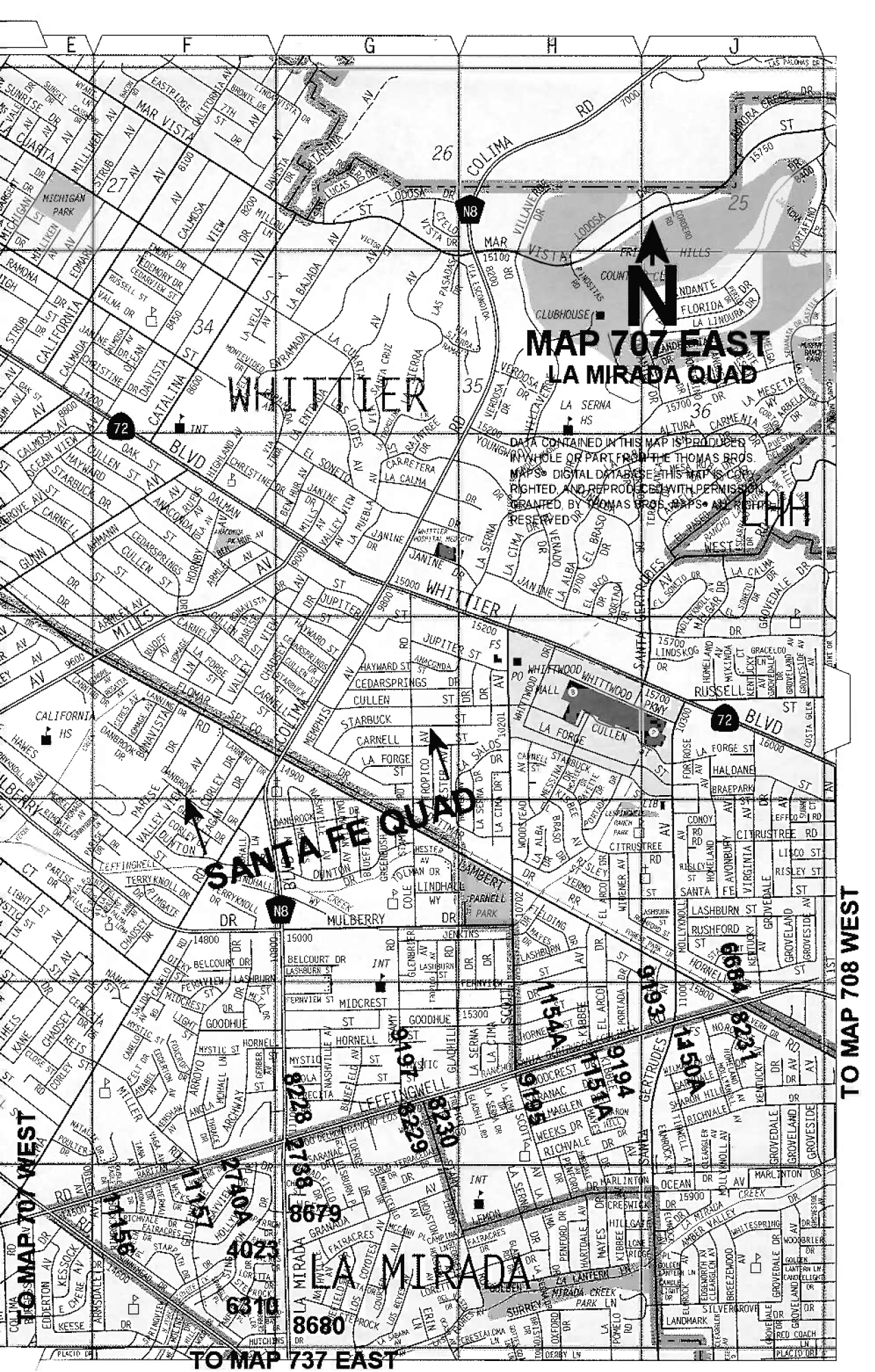
ABUT -----	Abutment	LT -----	Left
ALG -----	Along	LACE -----	L.A. City Engineer
ANG PT -----	Angle Point	LACS -----	L.A. Co. Engineer
B/W -----	Back of Walk	LAFC -----	L.A. Co. Flood Control
BCR -----	Beginning of Curb Return	L&BN -----	Lead and Bench Nail
BC -----	Beginning of Curve	L&BR -----	Lead and Brad
BLDG -----	Building	L&N -----	Lead and Nail
BM -----	Bench Mark	L&SPK -----	Lead and Spike
BT SPK -----	Boat or Bolt Spike	L&T -----	Lead and Tack
BR CAP -----	Brass or Bronze Cap	MCR -----	Middle of Curb Return
C B -----	Catch Basin	MKD -----	Marked
CTR -----	Center	MC -----	Middle of Curve
C/L -----	Center Line	MON -----	Monument
C/L INT -----	Center Line Intersection	N/O -----	North of
C/L PROD -----	Center Line Produced	NR -----	Near
CONC -----	Concrete	OPP -----	Opposite
COR -----	Corner	PI -----	Point of Intersection
COE -----	Corps of Engineers	PK&W -----	PK Nail and Washer
CULV -----	Culvert	P/L -----	Property Line
CYN -----	Canyon	POST -----	Point of Semi-Tangent
CB -----	Curb	PP -----	Power Pole
CS MON -----	Co. Eng. Monument	PVMT -----	Pavement
CT SPK -----	Cut Spike	PROD -----	Produced
DPW -----	Dept. of Public Works	RD -----	Road
DR -----	Drive or Driveway	RDBM -----	Road Dept. Bench Mark
E/O -----	East of	RDBM TAG -----	Road Dept. Bench Mark Tag
ECR -----	End of Curb Return	RR -----	Railroad
EC -----	End of Curve	RT -----	Right
ENT -----	Entrance	R/W -----	Right of Way
FL -----	Floor	SDMH -----	Storm Drain Manhole
FTG -----	Footing	SMH -----	Sewer Manhole
FRWY -----	Freeway	SPK -----	Spike
F/W -----	Front of Walk	ST&W -----	Spike Tin and Washer
GAR -----	Garage	S/O -----	South of
HDWL -----	Headwall	TP -----	Telephone Pole
HSE -----	House	USC&GS -----	U.S. Coast and Geodetic Survey
HWY -----	Highway	USGS -----	U.S. Geological Survey
INT -----	Intersection	WK -----	Walk
IP -----	Iron Pipe	W/O -----	West of

LA MIRADA QUAD INDEX



**NUMBERS REFER TO
THOMAS BROS PAGE
NUMBERS.**

**EACH THOMAS BROS
PAGE IS DIVIDED INTO
TWO INDEX PAGES
EAST AND WEST**



MAP 707 EAST LA MIRADA QUAD

WHITTIER

SANTA FE QUAD

LA MIRADA

DATA CONTAINED IN THIS MAP IS PRODUCED BY WHOLE OR PART FROM THE THOMAS BROS. MAPS DIGITAL DATABASE. THIS MAP IS COPYRIGHTED AND REPRODUCED WITH PERMISSION GRANTED BY THOMAS BROS. MAPS. ALL RIGHTS RESERVED.

TM

TO MAP 707 WEST

TO MAP 708 WEST

TO MAP 737 EAST

Map grid labels: E, F, G, H, J (top); 26, 27, 34, 35, 36 (middle); 72 (circled); 9197, 9198, 9199, 9200, 9201, 9202, 9203, 9204, 9205, 9206, 9207, 9208, 9209, 9210, 9211, 9212, 9213, 9214, 9215, 9216, 9217, 9218, 9219, 9220, 9221, 9222, 9223, 9224, 9225, 9226, 9227, 9228, 9229, 9230, 9231, 9232, 9233, 9234, 9235, 9236, 9237, 9238, 9239, 9240, 9241, 9242, 9243, 9244, 9245, 9246, 9247, 9248, 9249, 9250, 9251, 9252, 9253, 9254, 9255, 9256, 9257, 9258, 9259, 9260, 9261, 9262, 9263, 9264, 9265, 9266, 9267, 9268, 9269, 9270, 9271, 9272, 9273, 9274, 9275, 9276, 9277, 9278, 9279, 9280, 9281, 9282, 9283, 9284, 9285, 9286, 9287, 9288, 9289, 9290, 9291, 9292, 9293, 9294, 9295, 9296, 9297, 9298, 9299, 9300, 9301, 9302, 9303, 9304, 9305, 9306, 9307, 9308, 9309, 9310, 9311, 9312, 9313, 9314, 9315, 9316, 9317, 9318, 9319, 9320, 9321, 9322, 9323, 9324, 9325, 9326, 9327, 9328, 9329, 9330, 9331, 9332, 9333, 9334, 9335, 9336, 9337, 9338, 9339, 9340, 9341, 9342, 9343, 9344, 9345, 9346, 9347, 9348, 9349, 9350, 9351, 9352, 9353, 9354, 9355, 9356, 9357, 9358, 9359, 9360, 9361, 9362, 9363, 9364, 9365, 9366, 9367, 9368, 9369, 9370, 9371, 9372, 9373, 9374, 9375, 9376, 9377, 9378, 9379, 9380, 9381, 9382, 9383, 9384, 9385, 9386, 9387, 9388, 9389, 9390, 9391, 9392, 9393, 9394, 9395, 9396, 9397, 9398, 9399, 9400, 9401, 9402, 9403, 9404, 9405, 9406, 9407, 9408, 9409, 9410, 9411, 9412, 9413, 9414, 9415, 9416, 9417, 9418, 9419, 9420, 9421, 9422, 9423, 9424, 9425, 9426, 9427, 9428, 9429, 9430, 9431, 9432, 9433, 9434, 9435, 9436, 9437, 9438, 9439, 9440, 9441, 9442, 9443, 9444, 9445, 9446, 9447, 9448, 9449, 9450, 9451, 9452, 9453, 9454, 9455, 9456, 9457, 9458, 9459, 9460, 9461, 9462, 9463, 9464, 9465, 9466, 9467, 9468, 9469, 9470, 9471, 9472, 9473, 9474, 9475, 9476, 9477, 9478, 9479, 9480, 9481, 9482, 9483, 9484, 9485, 9486, 9487, 9488, 9489, 9490, 9491, 9492, 9493, 9494, 9495, 9496, 9497, 9498, 9499, 9500, 9501, 9502, 9503, 9504, 9505, 9506, 9507, 9508, 9509, 9510, 9511, 9512, 9513, 9514, 9515, 9516, 9517, 9518, 9519, 9520, 9521, 9522, 9523, 9524, 9525, 9526, 9527, 9528, 9529, 9530, 9531, 9532, 9533, 9534, 9535, 9536, 9537, 9538, 9539, 9540, 9541, 9542, 9543, 9544, 9545, 9546, 9547, 9548, 9549, 9550, 9551, 9552, 9553, 9554, 9555, 9556, 9557, 9558, 9559, 9560, 9561, 9562, 9563, 9564, 9565, 9566, 9567, 9568, 9569, 9570, 9571, 9572, 9573, 9574, 9575, 9576, 9577, 9578, 9579, 9580, 9581, 9582, 9583, 9584, 9585, 9586, 9587, 9588, 9589, 9590, 9591, 9592, 9593, 9594, 9595, 9596, 9597, 9598, 9599, 9600, 9601, 9602, 9603, 9604, 9605, 9606, 9607, 9608, 9609, 9610, 9611, 9612, 9613, 9614, 9615, 9616, 9617, 9618, 9619, 9620, 9621, 9622, 9623, 9624, 9625, 9626, 9627, 9628, 9629, 9630, 9631, 9632, 9633, 9634, 9635, 9636, 9637, 9638, 9639, 9640, 9641, 9642, 9643, 9644, 9645, 9646, 9647, 9648, 9649, 9650, 9651, 9652, 9653, 9654, 9655, 9656, 9657, 9658, 9659, 9660, 9661, 9662, 9663, 9664, 9665, 9666, 9667, 9668, 9669, 9670, 9671, 9672, 9673, 9674, 9675, 9676, 9677, 9678, 9679, 9680, 9681, 9682, 9683, 9684, 9685, 9686, 9687, 9688, 9689, 9690, 9691, 9692, 9693, 9694, 9695, 9696, 9697, 9698, 9699, 9700, 9701, 9702, 9703, 9704, 9705, 9706, 9707, 9708, 9709, 9710, 9711, 9712, 9713, 9714, 9715, 9716, 9717, 9718, 9719, 9720, 9721, 9722, 9723, 9724, 9725, 9726, 9727, 9728, 9729, 9730, 9731, 9732, 9733, 9734, 9735, 9736, 9737, 9738, 9739, 9740, 9741, 9742, 9743, 9744, 9745, 9746, 9747, 9748, 9749, 9750, 9751, 9752, 9753, 9754, 9755, 9756, 9757, 9758, 9759, 9760, 9761, 9762, 9763, 9764, 9765, 9766, 9767, 9768, 9769, 9770, 9771, 9772, 9773, 9774, 9775, 9776, 9777, 9778, 9779, 9780, 9781, 9782, 9783, 9784, 9785, 9786, 9787, 9788, 9789, 9790, 9791, 9792, 9793, 9794, 9795, 9796, 9797, 9798, 9799, 9800, 9801, 9802, 9803, 9804, 9805, 9806, 9807, 9808, 9809, 9810, 9811, 9812, 9813, 9814, 9815, 9816, 9817, 9818, 9819, 9820, 9821, 9822, 9823, 9824, 9825, 9826, 9827, 9828, 9829, 9830, 9831, 9832, 9833, 9834, 9835, 9836, 9837, 9838, 9839, 9840, 9841, 9842, 9843, 9844, 9845, 9846, 9847, 9848, 9849, 9850, 9851, 9852, 9853, 9854, 9855, 9856, 9857, 9858, 9859, 9860, 9861, 9862, 9863, 9864, 9865, 9866, 9867, 9868, 9869, 9870, 9871, 9872, 9873, 9874, 9875, 9876, 9877, 9878, 9879, 9880, 9881, 9882, 9883, 9884, 9885, 9886, 9887, 9888, 9889, 9890, 9891, 9892, 9893, 9894, 9895, 9896, 9897, 9898, 9899, 9900, 9901, 9902, 9903, 9904, 9905, 9906, 9907, 9908, 9909, 9910, 9911, 9912, 9913, 9914, 9915, 9916, 9917, 9918, 9919, 9920, 9921, 9922, 9923, 9924, 9925, 9926, 9927, 9928, 9929, 9930, 9931, 9932, 9933, 9934, 9935, 9936, 9937, 9938, 9939, 9940, 9941, 9942, 9943, 9944, 9945, 9946, 9947, 9948, 9949, 9950, 9951, 9952, 9953, 9954, 9955, 9956, 9957, 9958, 9959, 9960, 9961, 9962, 9963, 9964, 9965, 9966, 9967, 9968, 9969, 9970, 9971, 9972, 9973, 9974, 9975, 9976, 9977, 9978, 9979, 9980, 9981, 9982, 9983, 9984, 9985, 9986, 9987, 9988, 9989, 9990, 9991, 9992, 9993, 9994, 9995, 9996, 9997, 9998, 9999, 10000.



MAP 707 WEST LA MIRADA QUAD

DATA CONTAINED ON THIS MAP IS PRODUCED IN WHOLE OR PART BY THE THOMAS BROS. MAPS DIGITAL DATABASE. THIS MAP'S COPY RIGHTS AND REPRODUCED WITH PERMISSION GRANTED BY THOMAS BROS. MAPS. ALL RIGHTS RESERVED.

SANTA FE SPRINGS

SANTA FE QUAD

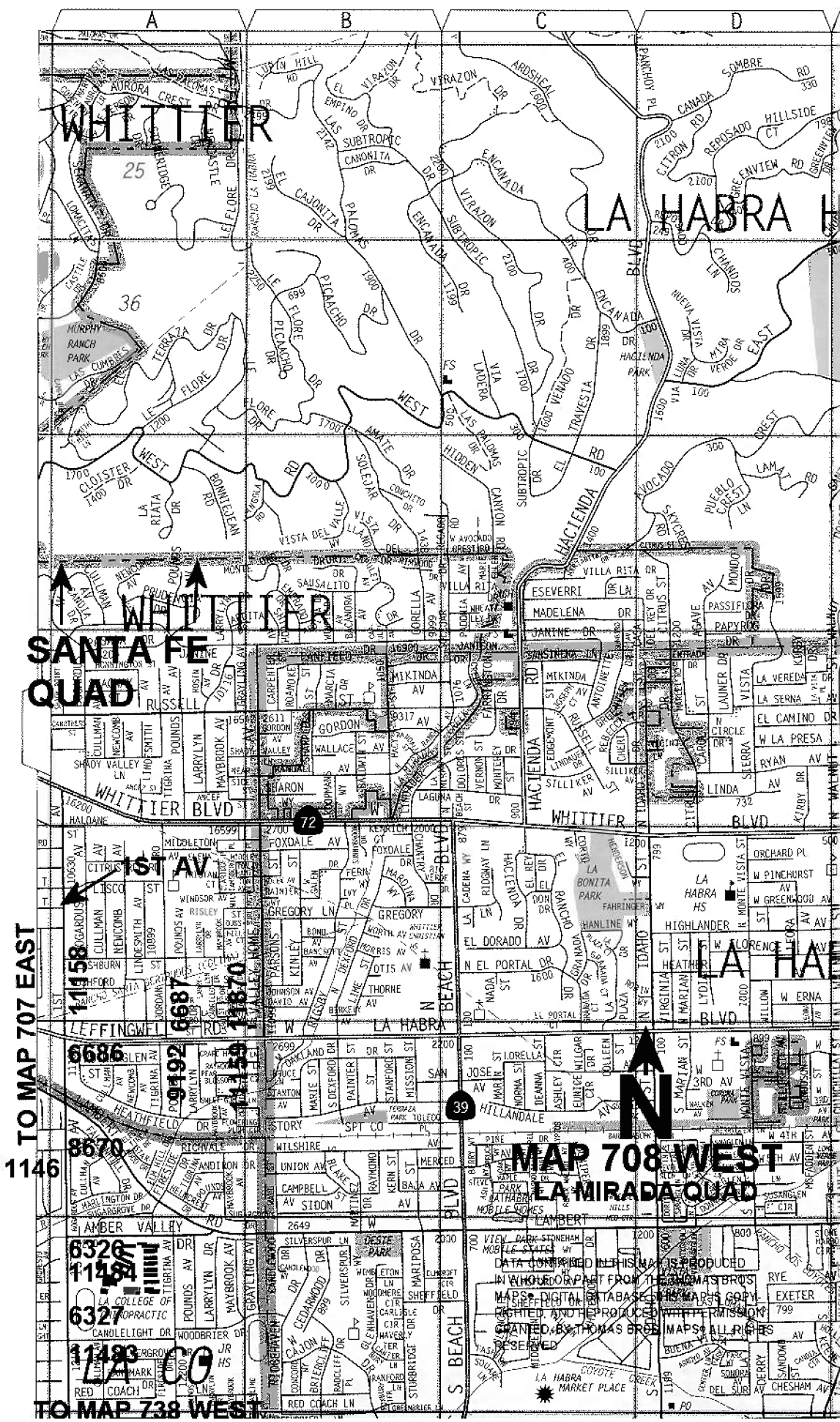
NORWALK QUAD

8629
7008
9274

TO MAP 737 WEST

TO MAP 711 EAST

Map grid letters: A, B, C, D, E
Map grid numbers: 1, 2, 3, 4, 5, 6, 7
Neighborhoods: LOS NIETOS, SANTA FE SPRINGS, SANTA FE QUAD, NORWALK QUAD
Streets: WASHINGTON, LAUREL, MULBERRY, SANTA FE, TELEGRAPH, LAKELAND, MEYER, RAINIER, BEATY, PATRICK, FIDEL, LAUREL, LOUIS, CARMENITA, HURCHEL, TINEZ, E HALEY, WATTINGS, SARANAC, PACID, VALLEY, VIEW, COLIMA, EDGEMONT, KEES, PLACID
Landmarks: SAINT PAUL HS, SANTA FE SPRINGS MALL, CARMENITA, SUNSHINE PARK, HONEY SUCKLE CLUB, SUNNYBROOK CLUB, STARLIGHT, COTEAU, LEFFINGWELL, SARANAC, PACID, VALLEY, VIEW, COLIMA, EDGEMONT, KEES, PLACID



WHITTIER

LA HABRA

SANTA FE QUAD

WHITTIER

WHITTIER

TO MAP 707 EAST

1146



MAP 708 WEST

LA MIRADA QUAD

TO MAP 738 WEST

DATA COMPILERS IN HIS NAME IS PRODUCED
IN WHOLE OR PART FROM THE THOMAS BROS
MAPS, DIGITAL DATABASES, OR ANY OTHER
RIGHTED AND THE PRODUCED WITH PERMISSION
GRANTED BY THOMAS BROS MAPS. ALL RIGHTS
RESERVED

25

36

72

39

6686

99192

11159

8670

6326

11484

6327

11193

11193

CO

SANTA FE SPRINGS

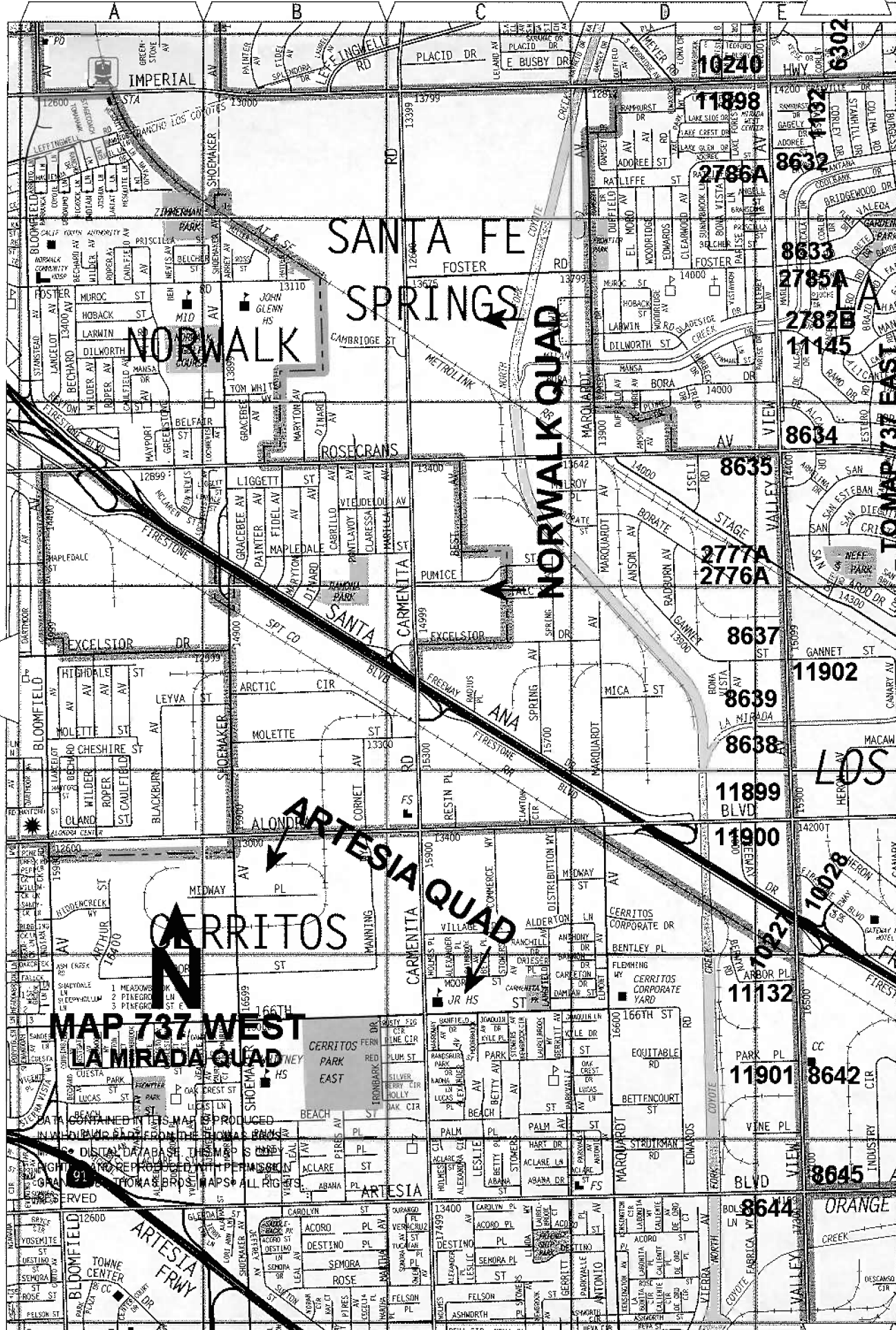
NORWALK

NORWALK QUAD

ARTESIA QUAD

CERRITOS

MAP 737 WEST LA MIRADA QUAD



DATA CONTAINED IN THIS MAP IS PRODUCED
 IN FULL OR PART FROM THE NATIONAL BUREAU OF
 ECONOMIC RESEARCH, DISTRICT OF COLUMBIA, D.C.

© 1988 BY THE NATIONAL BUREAU OF ECONOMIC RESEARCH, DISTRICT OF COLUMBIA, D.C.

ALL RIGHTS RESERVED

REPRODUCED BY THE NATIONAL BUREAU OF ECONOMIC RESEARCH, DISTRICT OF COLUMBIA, D.C.

ALL RIGHTS RESERVED

REPRODUCED BY THE NATIONAL BUREAU OF ECONOMIC RESEARCH, DISTRICT OF COLUMBIA, D.C.

10240

11898

2786A

8633

2785A

2782B

11445

8634

8635

8637

11902

8639

8638

11899

11900

11901

8642

8645

8644

8644

8644

8644

8644

8644

8644

8644

8644

8644

8644

8644

8644

8644

8644

8644

8644

8644

8644

8644

8644

8644

8644

8644

8644

8644

8644

8644

8644

8644

8644

8644

8644

8644

8644

8644

8644

8644

8644

8644

8644

8644

8644

8644

8644

8644

8644

8644

8644

8644

8644

8644

8644

8644

8644

8644

8644

8644

8644

8644

8644

8644

8644

8644

8644

8644

8644

8644

8644

8644

8644

8644

8644

8644

8644

8644

8644

8644

8644

8644

8644

8644

8644

8644

8644

8644

6302

1132

8633

2785A

2782B

11445

8634

8635

11902

8639

8638

11899

11900

11901

8642

8645

8644

8644

8644

8644

8644

8644

8644

8644

8644

8644

8644

8644

8644

8644

8644

8644

8644

8644

8644

8644

8644

8644

8644

8644

8644

8644

8644

8644

8644

8644

8644

8644

8644

8644

8644

8644

8644

8644

8644

8644

8644

8644

8644

8644

8644

8644

8644

8644

8644

8644

8644

8644

8644

8644

8644

8644

8644

8644

8644

8644

8644

8644

8644

8644

8644

8644

8644

8644

8644

8644

8644

8644

8644

8644

8644

8644

8644

8644

8644

8644

8644

8644

8644

8644

8644

8644

8644

8644

8644

8644

8644

8644

8644

8644

8644

8644

8644

8644

8644

8644

8644

8644

8644

8644

8644

8644

8644

8644

8644

8644

8644

8644

8644

8644

8644

8644

8644

8644

8644

8644

8644

8644

8644

8644

8644

8644

8644

8644

8644

8644

8644

8644

8644

8644

8644

8644

8644

8644

8644

8644

8644

8644

8644

8644

8644

8644

8644

8644

8644

8644

8644

8644

8644

8644

8644

8644

8644

8644

8644

8644

8644

8644

8644

8644

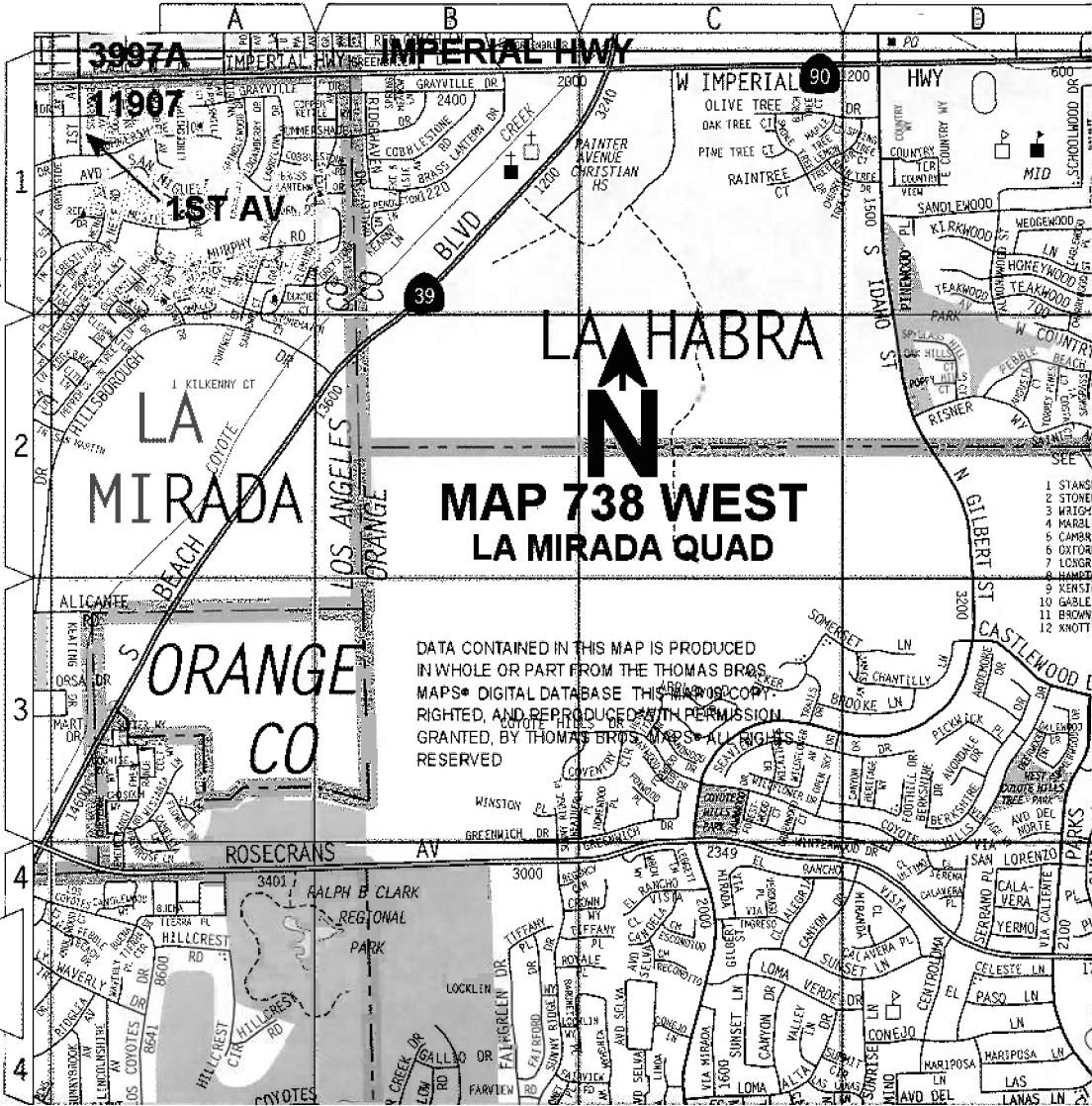
8644

8644

8644

TO MAP 708 WEST

TO MAP 737 EAST



QUAD YEAR	ELEV FOOT/METER	DESCRIPTION	BM NUMBER
LA MIRADA (2005)	136.104 41.485	CUT SPIKE IN PP (NO #) @ NW COR IMPERIAL HWY & CORLEY DR SPIKE ON S SIDE OF PP FL WITH GR	Y 1132
LA MIRADA (2005)	258.597 78.821	RDBM TAG IN W CB 300MM(1FT) S/O BCR @ SW COR FIRST AVE & SHARONHILL DR	Y 1146
BASELINE (2005)	243.473 74.211	L&BN IN N CB @ W END C. B. 11M(36FT) E/O BCR @ NE COR SANTA GERTRUDES AVE & LEFFINGWELL RD	Y 1150A
BASELINE (2005)	236.674 72.138	L&BN IN S CB LEFFINGWELL RD 12.5M(41FT) E/O C/L PROD EL ARCO DR	Y 1151A
BASELINE (2005)	230.700 70.318	CS MON IN WELL 300MM(1FT) S/O CF (IN ISLE) 13M(43FT) S/O C/L LEFFINGWELL RD OPP HSE #15462 & 188M(0.1MI) E/O SCOTT AVE MKD (RM 2 LA HABRA A 9 1960)	Y 1154A
BASELINE (2005)	218.736 66.671	L&T IN CB OF DRWY 600MM(2FT) E/O BCR @ NW COR LA MIRADA BLVD & LEFFINGWELL RD	Y 2738
BASELINE (2005)	193.624 59.017	L&BN IN W END C. B. N/O C/L LEFFINGWELL RD & 39M(128FT) W/O C/L DRWY @ W END APT BLDG #14905 (490FT W/O C/L LA MIRADA BLVD)	Y 2740A
BASELINE (2005)	96.802 29.505	L&SPK N CB 1M(3.3FT) E/O BCR @ NE COR STAGE RD & VALLEY VIEW AVE MKD (RBM 1)	Y 2776A
BASELINE (2005)	96.850 29.520	USC&GS MON FL 2.7M(9FT) E/O BCR 450MM(1.5FT) N/O CF @ NE COR VALLEY VIEW AVE & STAGE RD MKD (K 788 1945)	Y 2777A
BASELINE (2005)	96.316 29.357	L&BN IN E CB 25M(82FT) N/O BCR @ NE COR VALLEY VIEW AVE & MANSA DR (@ CTR BRIDGE OVER MILAN CREEK)	Y 2782B
BASELINE (2005)	96.784 29.500	CS MON IN WELL 300MM(1FT) E/O E CF 600MM(2FT) N/O BCR @ NE COR VALLEY VIEW AVE & FOSTER RD MKD (BM 1-6A 1961)	Y 2785A
BASELINE (2005)	108.046 32.933	L&BN IN E CB 300MM(1FT) N/O BCR @ NE COR VALLEY VIEW AVE & ADOREE ST	Y 2786A
LA MIRADA (2005)	302.814 92.298	RDBM TAG IN S CB 300MM(1FT) E/O BCR @ SE COR FIRST AVE & IMPERIAL HWY	Y 3997A
LA MIRADA (2005)	270.380 82.412	L&T IN S CB IMPERIAL HWY & 14.6M(48FT) W/O C/L PROD CLEARGLLEN AVE MKD (BM)	Y 3999
LA MIRADA (2005)	209.702 63.917	RDBM TAG IN E CB 600MM(2FT) N/O BCR @ NE COR LA MIRADA BLVD & GRANADA AVE	Y 4023
LA MIRADA (2005)	218.813 66.694	L&BN IN CB RET 600MM(2FT) N/O BCR @ SW COR ALICANTE RD & MANCITA DR	Y 4034A
LA MIRADA (2005)	214.576 65.403	L&BN IN CB RET 600MM(2FT) N/O BCR @ SE COR ALICANTE RD & LA MESA DR	Y 4035
LA MIRADA (2005)	182.853 55.734	L&BR IN CB RET 600MM(2FT) N/O BCR @ SE COR ALICANTE RD & ADELFA DR	Y 4036
LA MIRADA (2005)	181.656 55.369	L&BN IN CB RET 600MM(2FT) N/O BCR @ SW COR ALICANTE RD & ADELFA DR	Y 4037

QUAD YEAR	ELEV FOOT/METER	DESCRIPTION	BM NUMBER
LA MIRADA (2005)	148.346 45.216	L&NAIL IN W CB 12M(39FT) W/O & 30M(98FT) S/O C/L INT LA MIRADA BLVD & WHITEROCK DR IN FRONT PP #1063580E	Y 4038
LA MIRADA (2005)	143.382 43.703	L&BN IN W CB 12M(39FT) W/O & 61M(200FT) S/O C/L INT LA MIRADA BLVD & ALICANTE RD IN FRONT PP #1081377E	Y 4044
LA MIRADA (2005)	137.924 42.039	L&T S CB IMPERIAL HWY 40FT S C/L ON OR NEAR C/L PROD CORLEY DR	Y 6302
LA MIRADA (2005)	162.846 49.636	CE TAG SW COR CONC BASE OF GAS VENT IN ISLAND ON NE COR IMPERIAL HWY & BURGESS AVE 50FT N & 40FT E C/L INT	Y 6303
LA MIRADA (2005)	139.355 42.476	RD BM TAG 1FT E CB ON S SIDE IMPERIAL HWY 40FT S C/L & 84FT E C/L PROD SPRING VIEW RD	Y 6304
LA MIRADA (2005)	139.278 42.452	RD BM TAG SE COR CB ON NE COR IMPERIAL HWY & SPRINGVIEW RD 40FT N & 110FT E C/L INT	Y 6305
LA MIRADA (2005)	259.789 79.184	L&BN IN CTR OF CB RET @ NE COR IMPERIAL HWY & SANTA GERTRUDES AVE	Y 6308
LA MIRADA (2005)	196.298 59.832	L&BN IN E CB LA MIRADA BLVD & 11M(36FT) S/O C/L S ENT DRWY TO CHURCH PARKING LOT @ 12000 LA MIRADA BLVD	Y 6310
LA MIRADA (2005)	157.252 47.931	L&T E CB 300MM(1FT) N/O BCR @ NE COR LA MIRADA BLVD & FOSTER RD	Y 6313
LA MIRADA (2005)	157.782 48.092	CO ENG TAG 1.5M(5FT) E/O BCR @ SE COR LA MIRADA BLVD & FOSTER RD	Y 6314
LA MIRADA (2005)	141.035 42.988	RDBM TAG IN S CB 450MM(1.5FT) W/O BCR @ SW COR ALICANTE RD & BLUEFIELD AVE	Y 6317
LA MIRADA (2005)	142.221 43.349	L&PK IN S CB 300MM(1FT) E/O BCR @ SE COR ALICANTE RD & BLUEFIELD AVE	Y 6318
LA MIRADA (2005)	265.499 80.924	L&BR IN E CB (SERV RD) 1.5M(5FT) N/O BCR @ SE COR FOSTER RD & SANTA GERTRUDES AVE 4.5M(15FT) E/O & 10M(33FT) S/O C/L INT MKD (BM)	Y 6320
LA MIRADA (2005)	265.673 80.977	L&T IN E CB (SERV RD) 1.5M(5FT) N/O BCR @ NE COR FOSTER RD & SANTA GERTRUDES AVE 5.6M(18FT) E/O & 13.7M(45FT) N/O C/L INT MKD (BM)	Y 6321
LA MIRADA (2005)	252.952 77.100	CSBM BR DISK IN S END C. B. @ FC CHANNEL 10M(33FT) E/O C/L FIRST AVE & 72M(236FT) N/O C/L AMBER VALLEY DR MKD (BM 13-15A 1961 RE 5869)	Y 6326
LA MIRADA (2005)	275.723 84.041	RDBM TAG IN W CB 300MM(1FT) N/O BCR @ NW COR FIRST AVE & CANDLELIGHT DR	Y 6327
BASELINE (2005)	256.010 78.032	L&BN IN ELY CB 600MM(2FT) N/O C. B. @ SE COR LEFFINGWELL RD & LAMBERT RD	Y 6684
BASELINE (2005)	269.291 82.080	RDBM TAG N CB 600MM(2FT) E/O 1ST C. B. @ NE COR FIRST AVE & LEFFINGWELL RD	Y 6686

QUAD YEAR	ELEV FOOT/METER	DESCRIPTION	BM NUMBER
BASELINE (2005)	281.272 85.732	L&T IN S CB 1.5M(5FT) E/O BCR @ SE COR LEFFINGWELL RD & TIGRINA AVE	Y 6687
LA MIRADA (2005)	135.879 41.416	L&BN IN N CB 300MM(1FT) E/O BCR @ NE COR ASHGROVE DR & STANTON AVE MKD (BM)	Y 6998
LA MIRADA (2005)	135.069 41.169	L&BN IN W CB 300MM(1FT) N/O BCR @ SW COR ASHGROVE DR & STANTON AVE MKD (BM)	Y 6999
LA MIRADA (2005)	116.236 35.429	L&BN IN W CB 14M(46FT) S/O & 6M(20FT) W/O APPROX P I STANTON AVE & CALVERTON DR @ FIRE HYD HSE #15405 MKD BM	Y 7000
LA MIRADA (2005)	117.728 35.884	CS TAG IN NELY CB 12M(39.5FT) N/O BCR @ NELY COR ALONDRA BLVD & LA MIRADA BLVD	Y 7002
LA MIRADA (2005)	119.784 36.510	CS TAG IN NLY CB 600MM(2FT) W/O BCR @ NWLY COR ALONDRA BLVD & LA MIRADA BL	Y 7003
LA MIRADA (2005)	117.097 35.691	L&T IN N CB 12M(39.4FT) N/O & 9M(29.5FT) W/O C/L INT ALONDRA BLVD & OCASO AVE	Y 7004
LA MIRADA (2005)	117.198 35.722	L&T IN S CB 600MM(2FT) W/O BCR @ SW COR ALONDRA BLVD & OCASO AVE	Y 7005
BASELINE (2005)	164.558 50.157	L&BR IN E CB 3.7M(12FT) S/O BCR @ NE COR VALLEY VIEW AVE & LEFFINGWELL RD	Y 7008
LA MIRADA (2005)	227.644 69.386	L&T IN W CB 12M(39.5FT) N/O N END C. B. & 10M(33FT) W/O C/L SANTA GERTRUDES AVE 78M(256FT) N/O AVENIDA SANTA TECLA MKD (BM)	Y 7009
LA MIRADA (2005)	231.089 70.436	L&BR IN N CB 12M(39.5FT) W/O BCR @ NW COR ALICANTE RD & SANTA GERTRUDES AVE	Y 7010
LA MIRADA (2005)	119.685 36.480	L&BN IN E CB 1.5M(5FT) N/O BCR @ NE COR EXCELSIOR DR & ESCALONA RD	Y 7011
LA MIRADA (2005)	121.792 37.122	L&BN IN E CB 300MM(1FT) S/O BCR @ SE COR EXCELSIOR RD & ESCALONA RD	Y 7012
LA MIRADA (2005)	111.786 34.072	L&BN IN S CB ROSECRANS AVE 600MM(2FT) W/O BCR @ SW COR BIOLA AVE MKD (BM)	Y 7013
LA MIRADA (2005)	111.120 33.869	L&BN IN N CB ROSECRANS AVE 600MM(2FT) E/O BCR @ NE COR BIOLA AVE MKD (BM)	Y 7014
BASELINE (2005)	218.096 66.476	CS MON IN WELL 4.6M(15FT) E/O BCR 2M(6.5FT) S/O CF @ SW COR LEFFINGWELL RD & LA MIRADA BLVD MKD (K9 1960)	Y 8228
BASELINE (2005)	226.867 69.149	L & BN IN W CB 4M(13FT) N/O BCR @ NW COR LEFFINGWELL RD & STAMEY RD	Y 8229
BASELINE (2005)	227.127 69.229	L & BR IN S CB LEFFINGWELL RD 12.2M(40FT) E/O C/L PROD STAMEY RD (FR THE N)	Y 8230
BASELINE (2005)	256.067 78.049	CS BM MON FL IN CTR OF ISLAND LEFFINGWELL RD 52M(171FT) E/O C/L LAMBERT RD MKD (BM 4 - 18 1965)	Y 8231

QUAD YEAR	ELEV FOOT/METER	DESCRIPTION	BM NUMBER
BASELINE (2005)	159.671 48.668	L&BN IN E CB 300MM(1FT) S/O BCR @ SE COR VALLEY VIEW AVE & LEFFINGWELL RD	Y 8629
BASELINE (2005)	105.095 32.033	RDBM TAG IN W CB VALLEY VIEW AVE & 8M S/O C/L PROD ADOREE ST (FR THE E)	Y 8632
BASELINE (2005)	97.275 29.650	L&T IN W CB 600MM(2FT) S/O BCR @ SW COR VALLEY VIEW AVE & FOSTER RD	Y 8633
BASELINE (2005)	115.425 35.182	L&BN IN E CB 300MM(1FT) N/O BCR @ NE COR VALLEY VIEW AVE & ROSECRANS AVE	Y 8634
BASELINE (2005)	113.832 34.696	L&T IN CB RET 6M(19.7FT) N/O BCR @ SW COR VALLEY VIEW AVE & ROSECRANS AVE	Y 8635
BASELINE (2005)	81.488 24.838	RDBM TAG IN N CB 600MM(2FT) W/O BCR @ NW COR VALLEY VIEW AVE & GANNET ST	Y 8637
BASELINE (2005)	76.181 23.220	CS MON FL IN CONC ABUT 2M(6.5FT) E/O CF @ NE COR BRIDGE #1262 OVER LA MIRADA CREEK 14M(46FT) E/O C/L VALLEY VIEW AVE MKD (BM 1-2A 1968 RE 5869)	Y 8638
BASELINE (2005)	75.951 23.150	L&BN IN CHIS SQ IN W CB 12M(40FT) W/O C/L VALLEY VIEW AVE @ C/L OF BRIDGE OVER LA MIRADA CREEK	Y 8639
BASELINE (2005)	59.738 18.208	RDBM TAG IN E CB VALLEY VIEW AVE 2.4M(8FT) N/O C/L PROD PARK PL (@ S END C B)	Y 8642
BASELINE (2005)	56.709 17.285	CS BM MON IN S END C. B. 1.2M(4FT) N/O BCR @ NW COR ARTESIA BLVD & VALLEY VIEW AVE MKD (BM 8-1A 1968 RE 5869)	Y 8644
BASELINE (2005)	56.398 17.190	RDBM TAG IN N CB 600MM(2FT) E/O BCR @ NE COR ARTESIA BLVD & VALLEY VIEW AVE	Y 8645
LA MIRADA (2005)	162.004 49.379	CS REF MON IN WELL 8IN DN IN WALK @ SW COR IMPERIAL HWY & BURGESS AVE 43FT W & 45 FT S C/L INT MKD (RM NO 3 1960)	Y 8646
LA MIRADA (2005)	175.571 53.514	RDBM TAG IN S CB 40FT S & 20FT E/O APPROX. C/L INT IMPERIAL HWY & LAS FLORES AVE	Y 8649
LA MIRADA (2005)	228.695 69.706	RDBM TAG IN S CB 5FT W BCR 40FT S & 79FT W C/L INT IMPERIAL HWY & OCASO AVE	Y 8651
LA MIRADA (2005)	235.014 71.632	RDBM TAG IN NO CB 4FT W/O BCR @ NW COR IMPERIAL HWY & OXFORD DR 40FT N & 60FT W/O C/L INT	Y 8652
LA MIRADA (2005)	101.327 30.885	RDBM TAG IN N CB NR CO LINE 30FT N/O & 348FT W/O C/L INT STAGE RD & MC COMBER RD	Y 8663
LA MIRADA (2005)	106.067 32.329	L&BR IN S CB 15FT S & 26FT E/O C/L INT SAN ARDO DR & OCASO AVE	Y 8665
LA MIRADA (2005)	105.314 32.100	L&BR IN E CB 5FT N/O BCR @ NE COR OCASO AVE & SAN ARDO DR	Y 8666
LA MIRADA (2005)	259.734 79.167	RDBM TAG IN W CB (SERV RD) 600MM(2FT) N/O BCR @ NW COR FIRST AVE & SHARONHILL DR	Y 8670

QUAD YEAR	ELEV FOOT/METER	DESCRIPTION	BM NUMBER
LA MIRADA (2005)	267.963 81.675	L&T IN WALK 2M(6.5FT) E/O E CF SANTA GERTRUDES AVE & 13.7M(45FT) E/O C/L PROD GAZEBROOK DR MKD BM	Y 8672
LA MIRADA (2005)	183.262 55.858	RDBM TAG IN E CB 1.8M(6FT) N/O BCR @ NE COR ROSECRANS AVE & SANTA GERTRUDES AVE	Y 8674
LA MIRADA (2005)	180.656 55.064	RDBM TAG IN S CB 3M(10FT) W/O BCR @ SE COR ROSECRANS AVE & SANTA GERTRUDES AVE	Y 8675
LA MIRADA (2005)	165.562 50.463	RDBM TAG IN W CB 300MM(1FT) N/O BCR @ NW COR ASHGROVE DR & SANTA GERTRUDES AVE	Y 8676
LA MIRADA (2005)	165.292 50.381	RDBM TAG IN S CB 1M(3.3FT) E/O BCR @ SE COR ASHGROVE DR & GERTRUDES AVE	Y 8677
LA MIRADA (2005)	147.063 44.825	S&L IN S CB 1.5M(5FT) E/O BCR @ SE COR LA MIRADA BL & ALICANTE RD	Y 8678
LA MIRADA (2005)	210.968 64.303	RDBM TAG IN S CB 600MM(2FT) E/O BCR @ SE COR GRANADA AVE & MIRADA BLVD	Y 8679
LA MIRADA (2005)	196.294 59.831	RDBM TAG IN W CB LA MIRADA BLVD & 11M(36FT) S/O S ENT DRWY TO CHURCH PARKING LOT @ 12000 LA MIRADA BLVD	Y 8680
LA MIRADA (2005)	125.822 38.351	RDBM TAG IN N CB OF S (SERV RD) 16M(52.5FT) S/O & 4M(13FT) W/O C/L INT ROSECRANS AVE & ESCALONA RD	Y 8682
LA MIRADA (2005)	108.296 33.009	RDBM TAG IN S CB 600MM(2FT) E/O BCR @ SE COR ROSECRANS AVE & FIGUERAS RD	Y 8683
LA MIRADA (2005)	108.021 32.925	L&BN IN N CB 600MM(2FT) W/O BCR @ NW COR OF ROSECRANS AVE & FIGUERAS RD	Y 8684
LA MIRADA (2005)	118.837 36.222	RDBM TAG IN S CB 600MM(2FT) E/O BCR @ SE COR ROSECRANS AVE & CASTELLON RD	Y 8685
LA MIRADA (2005)	119.223 36.339	L&BR IN S CB 600MM(2FT) W/O BCR ISL @ SW COR ROSECRANS AVE & CASTELLON RD 13M(43FT) S/O & 11.3M(37FT) W/O C/L INT	Y 8686
LA MIRADA (2005)	91.944 28.025	L&BN IN S CB 20FT E/O BCR @ SE COR ALONDRA BLVD & TROJAN WAY	Y 8688
LA MIRADA (2005)	72.058 21.963	RDBM TAG IN N CB 42FT N/O & 23FT W/O C/L INT @ ALONDRA BLVD & CANARY ST	Y 8690
LA MIRADA (2005)	71.988 21.942	RDBM TAG IN S CB 1FT W/O BCR @ SW COR ALONDRA BLVD & CANARY ST	Y 8691
BASELINE (2005)	280.840 85.600	L&T IN S CB 5M(16.4FT) W/O BCR @ SW COR LEFFINGWELL RD & TIGRINA AVE	Y 9192
BASELINE (2005)	236.417 72.060	FC MON IN S SIDE @ BK OF C. B. LEFFINGWELL RD & 2.4M(8FT) E/O C/L PROD EL ARCO DRIVE	Y 9194
BASELINE (2005)	226.850 69.144	LACE TAG IN S CB 3.7M(12FT) E/O BCR @ SE COR LEFFINGWELL RD & SCOTT RD	Y 9195

QUAD YEAR	ELEV FOOT/METER	DESCRIPTION	BM NUMBER
BASILINE (2005)	226.345 68.990	CS MON IN WELL 300MM(1FT) N/O N CF 300MM(1FT) E/O BCR @ NE COR LEFFINGWELL RD & STAMEY RD MKD (BM 4-3B 1970)	Y 9197
BASILINE (2005)	147.444 44.941	RDBM TAG IN W CB VALLEY VIEW AVE 13M(42.7FT) W/O C/L & 2.7M(9FT) S/O C/L CUL-DE-SAC CHERE DR (FR THE W) 322M(1150FT) S/O LEFFINGWELL RD	Y 9274
LA MIRADA (2005)	67.264 20.502	LACS TAG IN E CB KNOTT AVE 28FT E/O & 23FT N/O C/L INT N TRACK OF SPRR 230FT S/O C/L DESMAN RD	Y 9563
LA MIRADA (2005)	214.918 65.507	RDBM TAG IN S CB 600MM(2FT) W/O BCR @ SW COR ALICANTE RD & LA MESA DR	Y 9576
BASILINE (2005)	63.980 19.501	L&BR IN N CB 2.4M(8FT) E/O BCR @ NE COR VALLEY VIEW AVE & FIRESTONE BLVD (SOUTH SIDE OF 5 FRWY)	Y 10028
BASILINE (2005)	66.318 20.214	DPW BM TAG IN CONC BASE TRAFFIC SIGNAL 8M(26.2FT) N/O C/L PROD FIRESTONE BLVD & 13M(43FT) W/O C/L VALLEY VIEW AVE (S SIDE 5 FRWY)	Y 10227
BASILINE (2005)	119.449 36.408	MWD RP TAG IN S CB RET 1.5M(5FT) E/O BCR @ SW COR VALLEY VIEW AVE & IMPERIAL HWY	Y 10240
BASILINE (2005)	60.882 18.557	DPW BM TAG IN W CB 1M(3.3FT) S/O BCR @ SW COR VALLEY VIEW AVE & ARBOR PL	Y 11132
BASILINE (2005)	97.213 29.631	L&T IN E CB 600MM(2FT) N/O BCR @ NE COR VALLEY VIEW AVE & MANSA DR	Y 11145
BASILINE (2005)	205.854 62.744	DPW BM TAG IN N CB 1M(3.3FT) W/O BCR @ NW COR LEFFINGWELL RD & DOUBLE EAGLE DR	Y 11156
BASILINE (2005)	188.327 57.402	L&BN IN S CB 300MM(1FT) W/O BCR @ SW COR LEFFINGWELL RD & ARROYO DR	Y 11157
BASILINE (2005)	268.961 81.980	DPW BM TAG IN S CB 2M(6.5FT) E/O BCR @ SE COR FIRST AVE & LEFFINGWELL RD	Y 11158
BASILINE (2005)	297.814 90.774	ORANGE CO BM DISK IN N CB @ W END C. B. @ BCR @ NE COR LA HABRA BLVD & VALLEY HOME AVE MKD (BM 2K-21-75)	Y 11159
LA MIRADA (2005)	270.287 82.384	L&T IN E CB RET 300MM(1FT) N/O BCR @ SE COR LAWNHILL DR & SANTA GERTRUDES AVE	Y 11161
LA MIRADA (2005)	118.937 36.252	LACO BM TAG IN N CB (SERV RD) ALONDRA BLVD 4.7M(15FT) N/O C/L & 6M(20FT) E/O C/L BLUEFIELD AVE	Y 11469
LA MIRADA (2005)	106.502 32.462	L&T IN ELY CB CALVERTON DR ON C/L PROD ALONDRA BLVD 71M(233FT) SLY/O C/L HAYFORD ST	Y 11470
LA MIRADA (2005)	128.260 39.094	LACO BM TAG IN E CB @ LT STD @ HSE #4602 STANTON AVE 6M(20FT) E/O C/L	Y 11471
LA MIRADA (2005)	221.543 67.527	LACO BM TAG IN W CB SANTA GERTRUDES AVE 9.4M(31FT) W/O C/L & 157M(515FT) S/O C/L ALICANTE RD (75.5FT S/O BC)	Y 11472
LA MIRADA (2005)	222.122 67.703	LACO BM TAG IN E CB SANTA GERTRUDES AVE 9.4M(31FT) E/O C/L & 142M(466FT) S/O C/L ALICANTE RD (33FT S/O BC)	Y 11473

QUAD YEAR	ELEV FOOT/METER	DESCRIPTION	BM NUMBER
LA MIRADA (2005)	113.517 34.600	LACO BM TAG IN E CB @ S END C. B. @ NE COR ALONDRA BLVD & ESCALONA RD 37M(121FT) N/O & 6M(20FT) E/O C/L INT	Y 11474
LA MIRADA (2005)	115.593 35.233	LACO BM TAG IN E CB 1M(3.3FT) N/O BCR @ NE COR ESCALONA RD & BARNWALL ST	Y 11475
LA MIRADA (2005)	130.677 39.830	LACO BM TAG IN E CB 1M(3.3FT) N/O BCR @ NE COR LA MIRADA AVE & ROSECRANS AVE	Y 11476
LA MIRADA (2005)	178.785 54.494	L&BN IN W CB 300MM(1FT) S/O BCR @ SW COR TACUBA DR & LA MIRADA BLVD (SERV RD) 4.7M(15.4FT) W/O & 14.5M(47.6FT) S/O C/L INT	Y 11477
LA MIRADA (2005)	179.300 54.651	LACO BM TAG IN E CB 300MM(1FT) N/O BCR @ SE COR TACUBA DR & LA MIRADA BLVD	Y 11478
LA MIRADA (2005)	193.551 58.995	L&T IN N CB 300MM(1FT) W/O BCR @ NW COR LA MIRADA BLVD & IMPERIAL HWY	Y 11479
LA MIRADA (2005)	194.589 59.311	LACO BM TAG IN E CB 16M(52.5FT) N/O BCR @ NE COR LA MIRADA BLVD & IMPERIAL HWY	Y 11480
LA MIRADA (2005)	228.951 69.784	LACO BM TAG E CB 100MM(0.3FT) N/O BCR @ NE COR SANTA GERTRUDES AVE & AVENIDA SANTA TECLA AVE	Y 11481
LA MIRADA (2005)	291.744 88.924	30MM(1IN) BUTTON BRASS CAP 400MM(1.3FT) S/O S CF @ BCR @ SW COR IMPERIAL HWY & GROVEDALE DR MKD (2016 091901A)	Y 11482
LA MIRADA (2005)	278.927 85.017	LACO TAG IN W CB 600MM(2FT) S/O BCR @ SW COR FIRST ST & CANDLELIGHT DR	Y 11483
LA MIRADA (2005)	257.324 78.433	LACO DPW TAG IN N CB 1M(3.3FT) E/O BCR @ NE COR FIRST ST & AMBER VALLEY DR	Y 11484
BASELINE (2005)	188.525 57.463	SPK IN S CB 1.5M(5FT) E/O BCR @ SE COR TELEGRAPH RD & LEFFINGWELL RD	Y 11866
BASELINE (2005)	185.794 56.630	L&LS#2996 TAG IN N CB 1.5M(5FT) W/O BCR @ NE COR TELEGRAPH RD & LEFFINGWELL RD	Y 11867
BASELINE (2005)	295.932 90.200	L&LS#5411 IN N CB 300MM(1FT) E/O ECR @ NW COR LEFFINGWELL RD & VALLEY HOME AV	Y 11870
BASELINE (2005)	119.067 36.292	MWD RP TAG IN S CB 600MM(2FT) W/O BCR @ SE COR VALLEY VIEW AV & IMPERIAL HWY	Y 11898
BASELINE (2005)	68.795 20.969	L&CALTRANS TAG IN W CB 1.5M(5FT) N/O BCR @ NW COR VALLEY VIEW AV & ALONDRA BL	Y 11899
BASELINE (2005)	68.994 21.029	L&CALTRANS TAG IN N CB 300MM(1FT) E/O BCR @ NE COR VALLEY VIEW AV & ALONDRA BL	Y 11900
BASELINE (2005)	59.811 18.230	L&DPW TAG IN W CB 300MM(1FT) S/O ECR @ SW COR VALLEY VIEW AV & PARK PL	Y 11901
BASELINE (2005)	82.082 25.019	L&DPW TAG IN E CB 300MM(1FT) N/O ECR @ NE COR VALLEY VIEW AV & GANNET ST	Y 11902

QUAD YEAR	ELEV FOOT/METER	DESCRIPTION	BM NUMBER
LA MIRADA (2005)	113.244 34.517	L&T NEAR MCR @ NW COR ALONDRA BL & ESCALONA RD	Y 11903
LA MIRADA (2005)	226.928 69.168	L&CO ENG TAG IN S CB 9.1M(30FT) W/O ECR @ SE COR SANTA GERTRUDES AV & ALICANTE AV	Y 11904
LA MIRADA (2005)	227.573 69.364	L&DPW TAG IN E CB 150FT N/O BCR @ NE COR SANTA GERTRUDES AV & AVENIDA SANTA TECLA @ STREET LIGHT #2127333E	Y 11905
LA MIRADA (2005)	259.537 79.107	BRASS DISK MKD (SWC ELEV 257.31 4.15.71) 1.5M(5FT) W/O BCR @ NW COR SANTA GERTRUDES AV & IMPERIAL HWY	Y 11906
LA MIRADA (2005)	302.474 92.194	L&BENCH NAIL IN N CB 1.5M(5FT) W/O ECR @ NW COR IMPERIAL HWY & FIRST AV	Y 11907
LA MIRADA (2005)	212.721 64.838	L&NAIL IN S CB 600MM(2FT) E/O ECR @ SE COR IMPERIAL HWY & CORDOVA RD	Y 11908
LA MIRADA (2005)	208.115 63.434	L&NAIL IN S CB 300MM(1FT) W/O BCR @ SW COR IMPERIAL HWY & CORDOVA RD	Y 11909
LA MIRADA (2005)	235.033 71.638	L&BN IN S CB 900MM(3FT) W/O BCR @ SW COR IMPERIAL HWY & OXFORD DR	Y 11910
LA MIRADA (2005)	229.569 69.973	BRASS CAP MKD(METROPOLITIAN WATER DISTRICT OF SO CAL LF107) IN N CB 900MM(3FT) W/O ECR @ NW COR IMPERIAL HWY & OCASO AV	Y 11911
LA MIRADA (2005)	177.369 54.062	MAG NAIL & W MKD(#0117A) 1.5M(5FT) S/O CB IN MIDDLE OF CONC WALK 3M(10FT) E/O C/L PROD IMPERIAL HWY & LAS FLORES AV	Y 11912
LA MIRADA (2005)	188.830 57.556	L&DPW TAG @ MCR @ NE COR IMPERIAL HWY & WICKER DR	Y 11913
LA MIRADA (2005)	189.103 57.639	L & DPW TAG @ MCR @ NW COR IMPERIAL HWY & WICKER DR	Y 11914
LA MIRADA (2005)	74.468 22.698	L&DPW TAG IN S CB DESMAN RD 3M(10FT) W/O RR XING NEAR BLDG #15300	Y 11915
LA MIRADA (2005)	1.000 0.305	L&LACO BM TAG IN E CB @ N END OF C.B. @ NE COR DESMAN RD & KNOTT AV	Y 11916
LA MIRADA (2005)	90.892 27.704	L&CALTRANS TAG IN N CB ALONDRA BL 5.2M(17FT) E/O C/L PROD TROJAN WY	Y 11917
LA MIRADA (2005)	95.457 29.095	L&RCE TAG @ BW @ NE COR STAGE RD & MCCOMBER RD	Y 11920
LA MIRADA (2005)	74.325 22.654	L&DPW TAG IN N CB DESMAN RD 3M(10FT) W/O RR XING NEAR BLDG #15300	Y 11921