

LOS ANGELES COUNTY
DEPARTMENT OF PUBLIC WORKS
BENCH MARK LIST



LANCASTER EAST QUAD

2004 ADJUSTMENT

**NAVD 88 DATUM
METRIC**

PREFACE

The Department of Public Works level net is composed of more than 1,700 miles or 2720 kilometers of levels supporting in excess of 9,000 bench marks. Previously when a major readjustment of the net was undertaken, to emphasize the complete break with previous elevations, the CY, CG, & CL, series bench marks were re-labeled DY, DG, & DL, respectively. Beginning in 1993 the baseline readjustment year will be indicated on baseline BM, s only indicated below (*). Henceforth all BM numbers will be labeled as a Y, G, or L, series that will no longer indicate the major adjustment year.

To facilitate the adjustment, indexing and distribution of adjusted values of the net, the county territory was divided into 33 quads or areas. For the identification purposes each quad was given a name, viz., "Rosemead," "La Mirada," "Santa Fe," etc. When bench marks and elevations in these quads are used, the name must be included in the bench mark description, e.g.,

* BASELINE 90.057 L&BR IN CTR OF CB RET @ NE COR Y 9191
(1990) 295.461 LA HABRA BLVD & VALLEY HOME AVE
10.7M N & 10.7M E/O C/L INT

It is expected that this general adjustment will for the most part remain sound for 8 to 12 years. Updating constrained adjustments will continue in the future. When a quad is readjusted, new elevations will be published and the date of readjustment will be noted in the bench mark description. Two bench marks with different adjustment dates will not normally agree with each other.

The basic accuracy of the net is reflected by an indicated field probable error of plus or minus 4mm per kilometer of leveling as determined from the conditions of closure. However, many years of experience in vertical control in the greater Los Angeles basin and Antelope Valley indicate that because of varying degrees of subsidence and heaving, the true datum is recovered only by obtaining substantial agreement of a number of bench marks.

The users of this net are invited to assist in its maintenance by notifying this department of cases of obliteration, apparent mistakes in description or elevations, and proven disturbance of bench marks.

DATUM: North American Vertical Datum of 1988 (NAVD88)

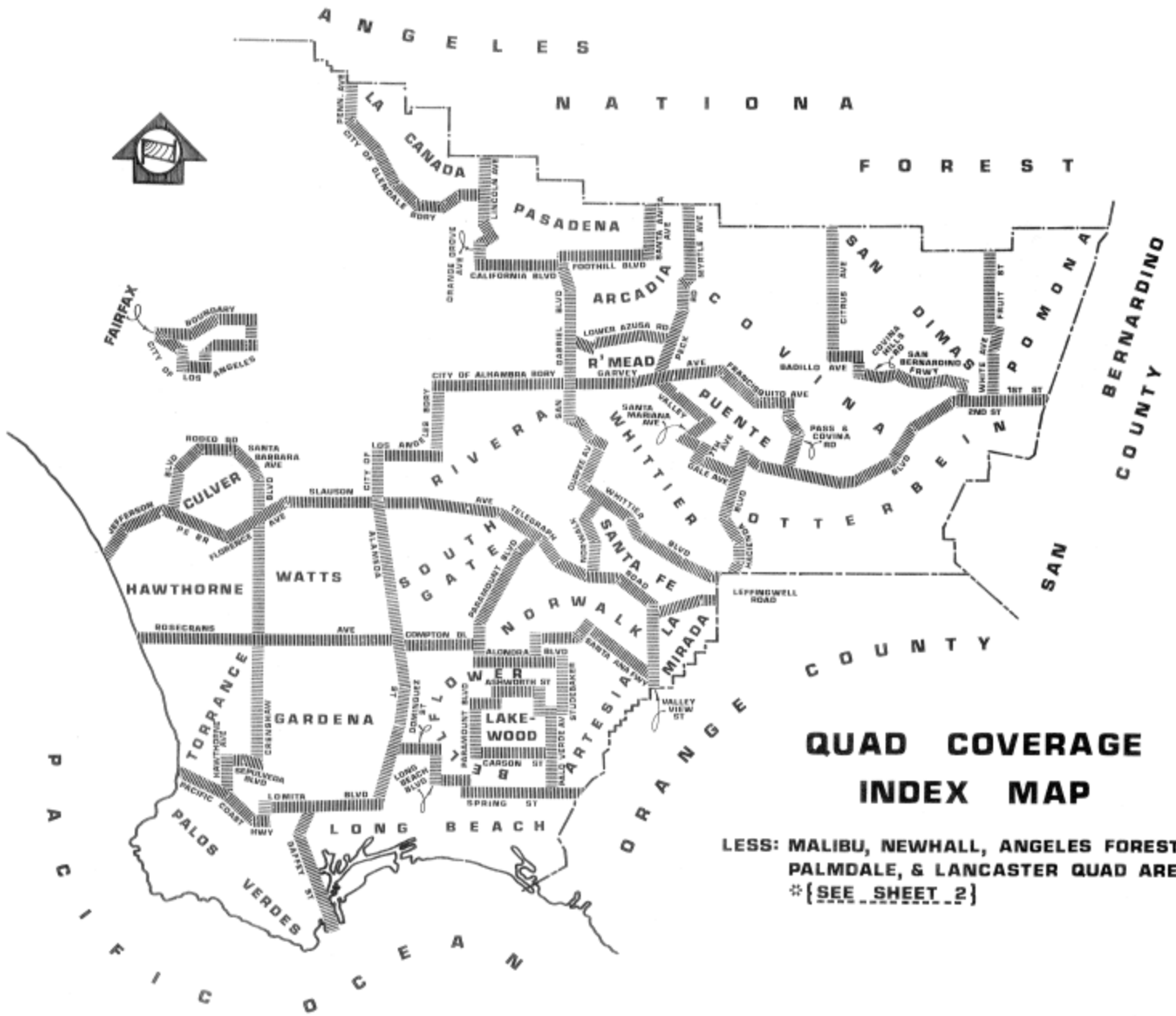
Note: NAVD 1988 minus approximately 700mm (2.3ft) equals
Previous NGVD 1929 Datums. For more accurate equations
At individual bench marks refer to previous publications

ABBREVIATIONS USED IN BENCH MARK LISTINGS

ABUT -----	Abutment	ECR -----	End of Curb
ALG -----	Along	EC -----	End of Curb
ANG PT -----	Angle Point	ENT -----	Entrance
B/W -----	Back of Walk	FL -----	Floor
BCR -----	Beginning of Curve Return	FTG -----	Footing
BLDG -----	Building	FRWY -----	Freeway
BM -----	Bench Mark	F/W -----	Front of Walk
BT SPK -----	Boat or Bolt Spike	GAR -----	Garage
BR CAP -----	Brass or Bronze Cap	HDWL -----	Headwall
C B -----	Catch Basin	HSE -----	House
CTR -----	Center	INT -----	Intersection
C/L -----	Center Line	IP -----	Iron Pipe
C/L INT -----	Center Line Intersection	LT -----	Left
C/L PROD ---	Center Line Produced	LACE -----	L.A. City Engineer
CONC -----	Concrete	LACS -----	L.A. Co. Engineer
COR -----	Corner	LAFC -----	L.A. Co. Flood Control
COE -----	Corps of Engineers	L&BN -----	Lead and Bench Nail
CULV -----	Culvert	L&BR -----	Lead and Brad
CYN -----	Canyon	L&N -----	Lead and Nail
CB -----	Curb	L&SPK -----	Lead and Spike
CS MON -----	Co. Eng. Monument	L&T -----	Lead and Tack
CT SPK -----	Cut Spike	MCR -----	Middle of Curb Return
DPW -----	Dept. of Public Works	MKD -----	Marked
DR -----	Drive or Driveway	MC -----	Middle of Curb
E/O -----	East of	MON -----	Monument

ABBREVIATIONS USED IN BENCH MARK LISTINGS (CON'T)

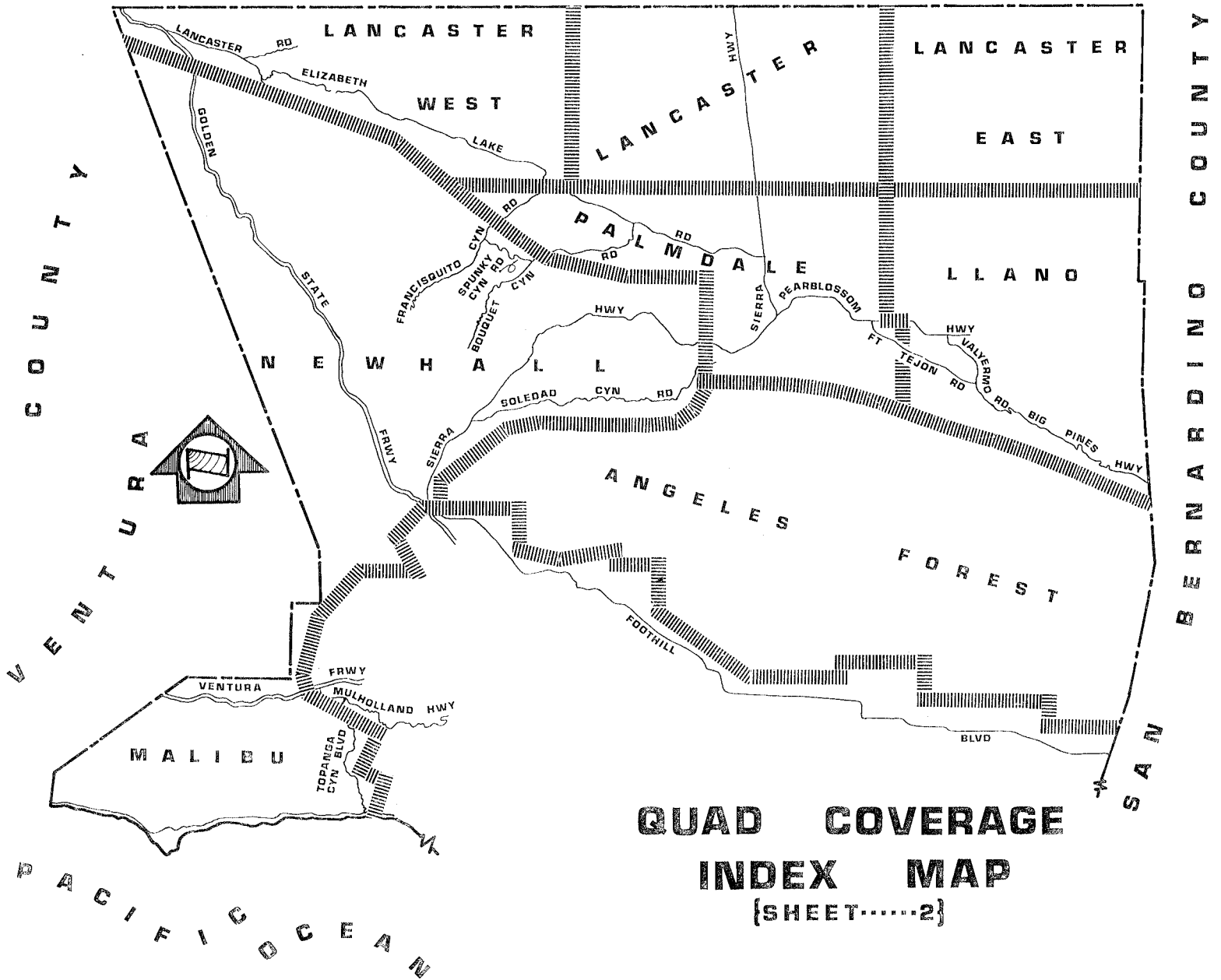
N/O ----- North of
NR ----- Near
OPP ----- Opposite
PI ----- Point of Intersection
PK&W ----- PK Nail and Washer
P/L ----- Property Line
POST ----- Point on Semi-Tangent
PP ----- Power Pole
PVMT ----- Pavement
PROD ----- Produced
RD ----- Road
RDBM ----- Road Dept. Bench Mark
RDBM TAG - Road Dept. Bench Mark Tag
RR ----- Railroad
RT ----- Right
R/W ----- Right of Way
SDMH ----- Storm Drain Manhole
SMH ----- Sewer Manhole
SPK ----- Spike
ST&W ----- Spike Tin and Washer
S/O ----- South of
TP ----- Telephone Pole
USC&GS --- U.S. Coast and Geodetic Survey
USGS ----- U.S. Geological Survey
WK ----- Walk
W/O ----- West of
D90/L-3



**QUAD COVERAGE
INDEX MAP**

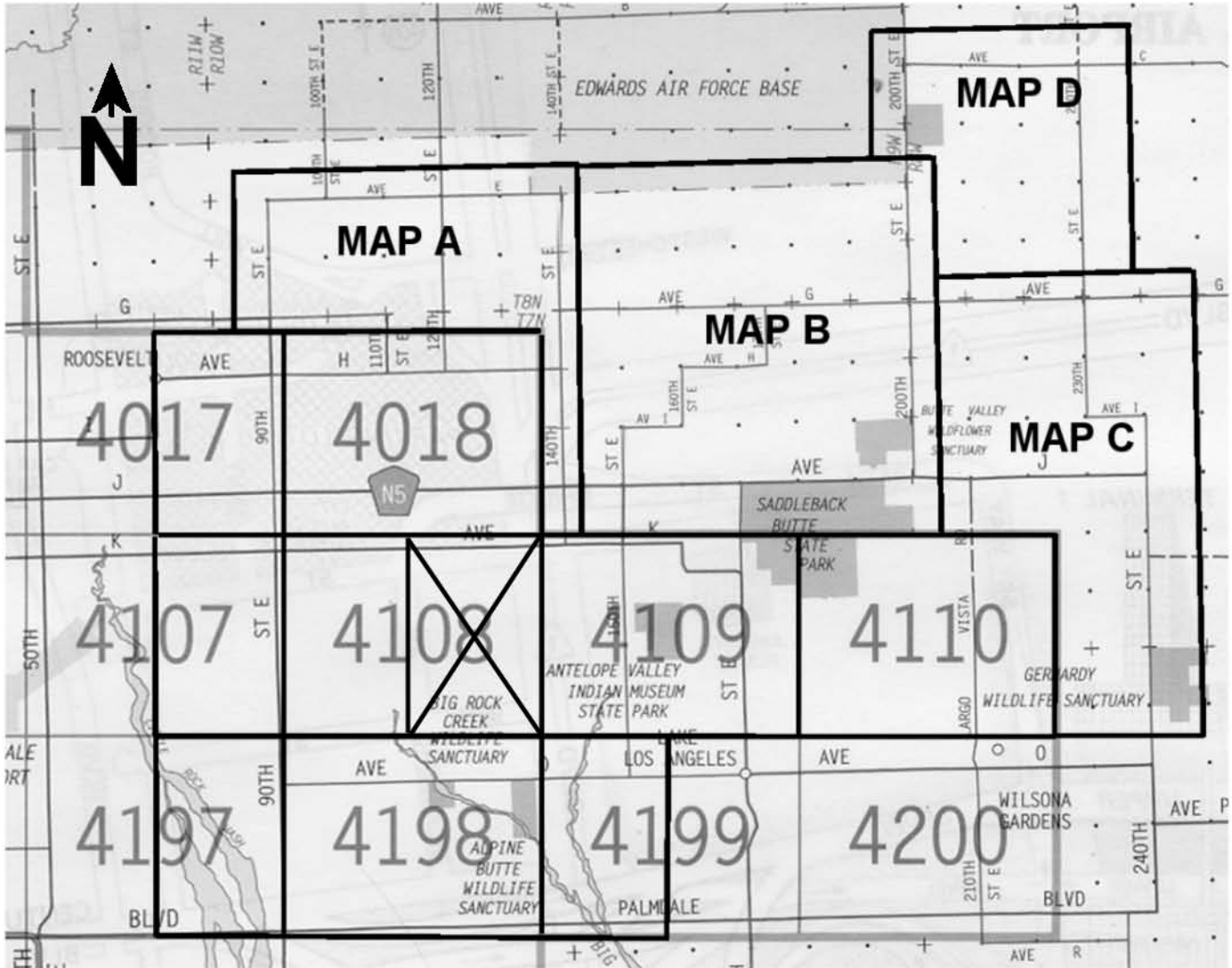
LESS: MALIBU, NEWHALL, ANGELES FOREST,
PALMDALE, & LANCASTER QUAD AREAS.*
*{SEE SHEET 2}

K E R N C O U N T Y



QUAD COVERAGE
INDEX MAP
 {SHEET.....2}

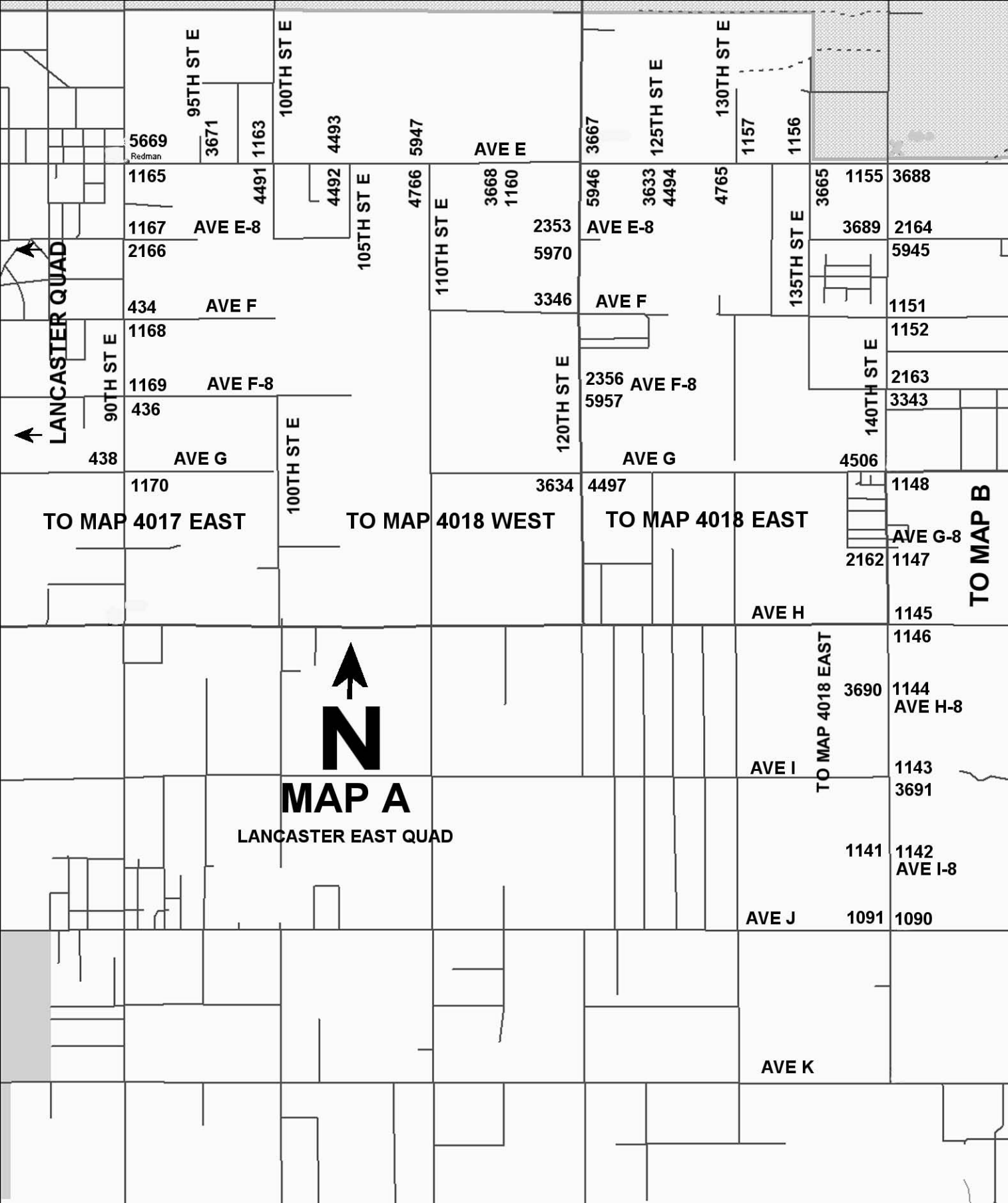
LANCASTER EAST QUAD



NUMBERS REFER TO THOMAS BROS PAGE NUMBERS

**EACH THOMAS BROS PAGE IS DIVIDED INTO
TWO INDEX PAGES WEST AND EAST**

**FOR AREAS WITH NO THOMAS BROS PAGES
SEE MAPS A,B,C,OR D (MAP D IS ON MAP C)**



5669
Redman

95TH ST E

3671

1163

100TH ST E

4493

5947

AVE E

3667

125TH ST E

130TH ST E

1157

1156

1165

4491

4492

4493

4766

4766

3668

1160

5946

3633

4494

4765

3665

1155

3688

1167

AVE E-8

105TH ST E

110TH ST E

2353

5970

AVE E-8

135TH ST E

3689

2164

2166

434

AVE F

3346

AVE F

1151

1168

1169

AVE F-8

120TH ST E

2356

AVE F-8

5957

140TH ST E

2163

3343

436

AVE G

100TH ST E

3634

4497

4506

1148

TO MAP 4017 EAST

TO MAP 4018 WEST

TO MAP 4018 EAST

AVE G-8

2162

1147

TO MAP B

AVE H

1145

1146



MAP A

LANCASTER EAST QUAD

AVE I

TO MAP 4018 EAST

3690

1144
AVE H-8

1143

3691

AVE J

1141

1142
AVE I-8

1091

1090

AVE K

TO MAP D

3457

3456

5935

3455

3453

3452

3450

3451

3400

2400

2398

2399

2400

2403

2404

2406

2405

3344

2407

2410

2409

3171

(LANCASTER BL)

3702

3175

4772

3172

3173

200TH ST E

2401

5936

2403

2404

2406

2407

2409

2410

2411

TO MAP C

TO MAP C

140TH ST E

AVE E

AVE E

AVE E-8

AVE F

AVE F

AVE F-8

AVE G

AVE G-8

AVE H

AVE H-8

AVE I

AVE I

AVE I-8

175TH ST E

180TH ST E

185TH ST E

190TH ST E

AVE J

AVE J

AVE K

140TH ST E

150TH ST E

160TH ST E

165TH ST E

170TH ST E

TO MAP 4109 WEST

TO MAP 4109 EAST

TO MAP 4110 WEST

200TH ST E



LANCASTER EAST QUAD

1148

145TH ST E

5941

2384

2386

4509

2387

2388

165TH ST E

2389

5940

2392

175TH ST E

5939

180TH ST E

2395

4506

2380

AVE G

4507

4508

160TH ST E

170TH ST E

2391

2393

2396

2397

2398

2399

2400

2380

150TH ST E

4508

160TH ST E

170TH ST E

2391

2393

2396

2397

2398

2399

2400

AVE H

AVE H

AVE H-8

AVE I

AVE I

AVE I-8

175TH ST E

180TH ST E

185TH ST E

190TH ST E

AVE J

AVE J

AVE K

140TH ST E

150TH ST E

160TH ST E

165TH ST E

170TH ST E

6322

5968

3362

3363

2426

2424

2425

2423

2421

2420

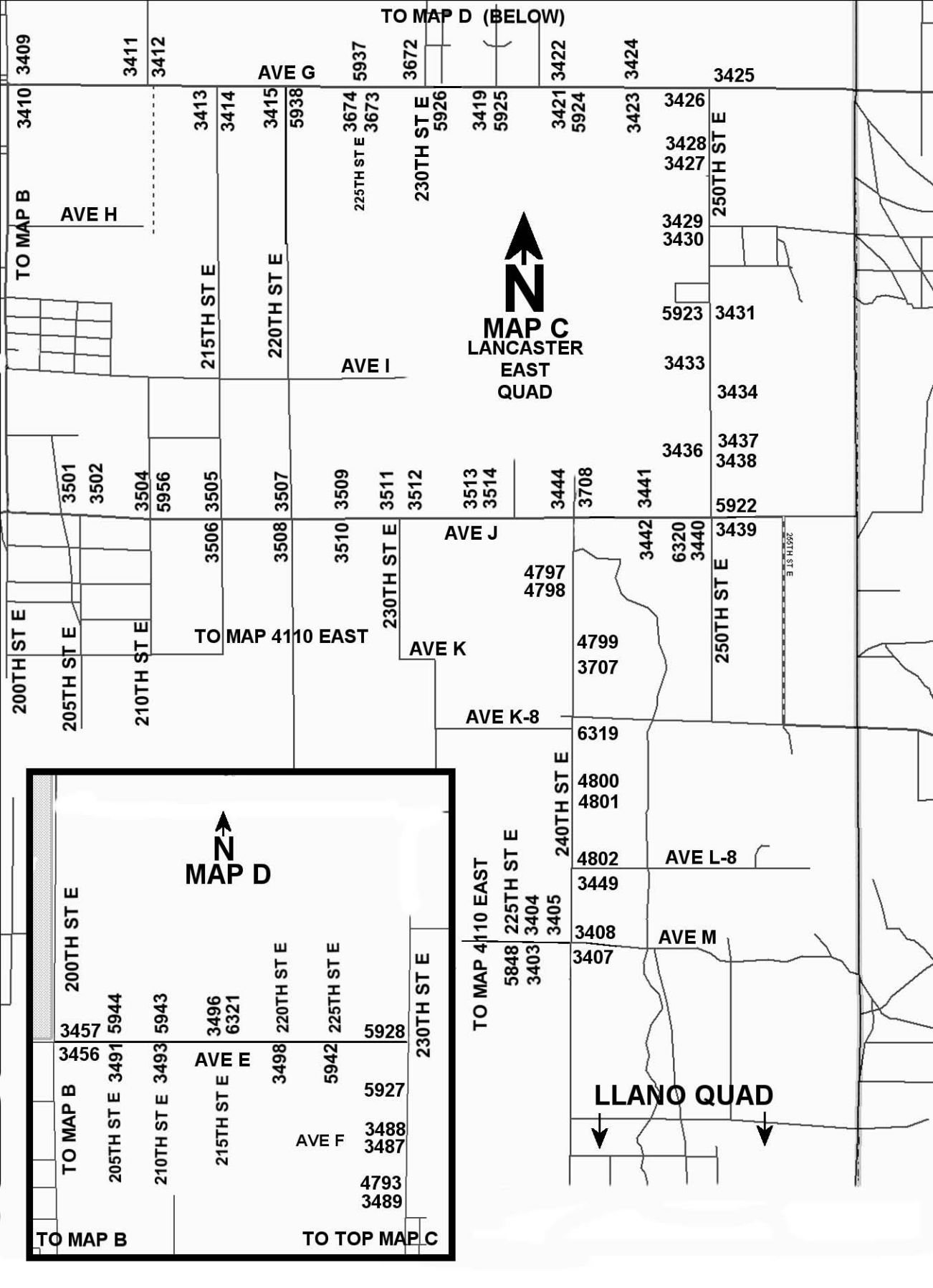
2419

TO MAP 4109 WEST

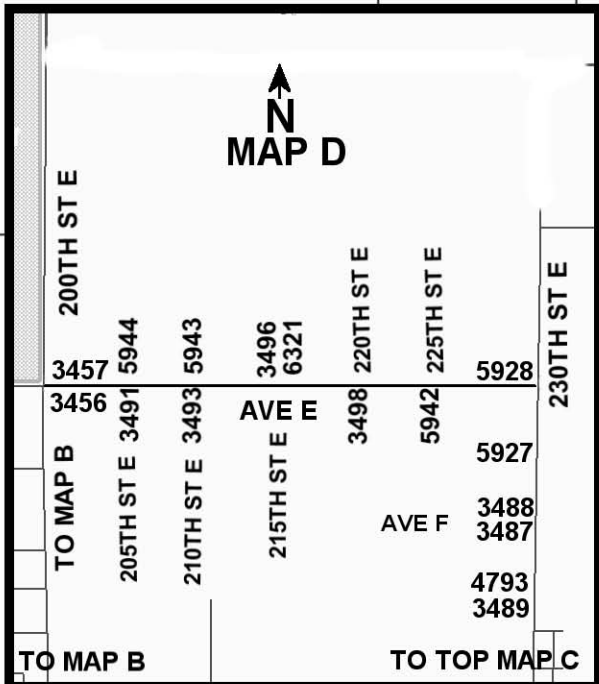
TO MAP 4109 EAST

TO MAP 4110 WEST

200TH ST E



MAP C
LANCASTER
EAST
QUAD



LLANO QUAD



TO MAP B 3409 3410 3411 3412

AVE H

3413 3414 3415 5938

215TH ST E 220TH ST E

3674 5937 3673 3672

225TH ST E 230TH ST E

3419 5925 3421 5924 3422 3423 3424 3425

3426 3428 3427 3429 3430 5923 3431 3433 3434 3436 3437 3438 3441 3442 6320 3440 3439 5922

250TH ST E

200TH ST E 205TH ST E 210TH ST E

3501 3502 3504 5956 3505 3506 3507 3508 3509 3510 3511 3512 3513 3514 3444 3708 3441

AVE I

TO MAP 4110 EAST

230TH ST E

4797 4798 4799 3707 3442

AVE J

AVE K

AVE K-8

250TH ST E

260TH ST E

6319 4800 4801 4802 3449 3408 3407

240TH ST E

TO MAP 4110 EAST 5848 225TH ST E 3403 3404 3405

AVE L-8

AVE M

3496 6321 3498 220TH ST E 5942 225TH ST E 5928 5927 3488 3487 4793 3489

AVE E

AVE F

TO MAP B

TO TOP MAP C

MAP 4017 EAST LANCASTER EAST QUAD

DATA CONTAINED IN THIS MAP IS PRODUCED IN WHOLE OR PART FROM THE THOMAS BROS. MAPS® DIGITAL DATABASE. THIS MAP IS COPYRIGHTED, AND REPRODUCED WITH PERMISSION GRANTED, BY THOMAS BROS. MAPS®. ALL RIGHTS RESERVED.



TO MAP A

1171
2167

90TH
ST E



TO MAP 4018 WEST

5673
5674

AVE
H



TO MAP 4018 WEST

2168

LANCASTER QUAD



278
1174

1175
274

AVE J



271
6350

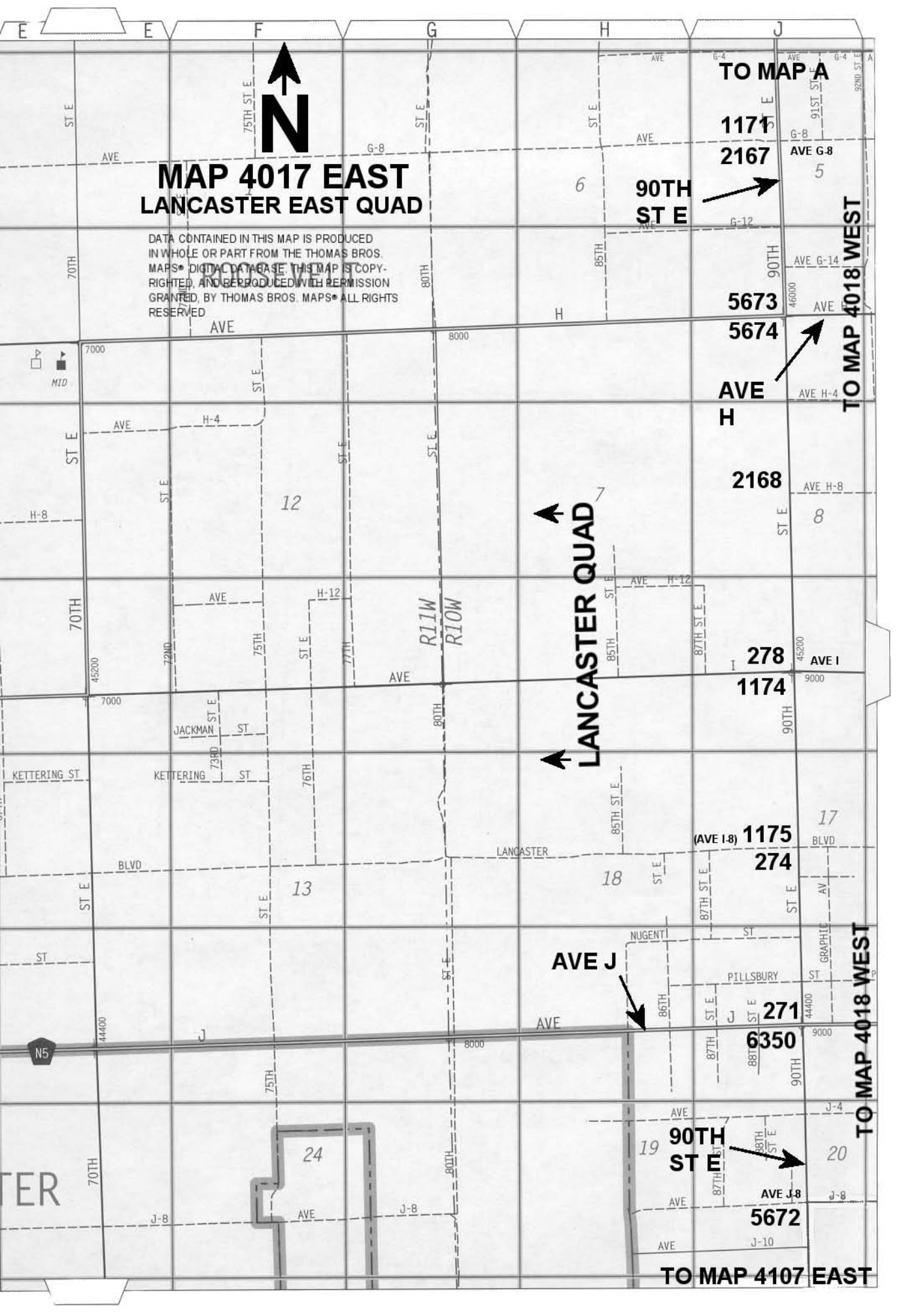
90TH
ST E



5672

TO MAP 4107 EAST

TO MAP 4018 WEST





TO MAP A

120TH ST E

**AVE G 8
5969 4496**

TO MAP 4018 WEST

2344 2343

2341 2342

2339 2340

2337 2338

TO MAP A

AVE H



**MAP 4018 EAST
LANCASTER EAST QUAD**

DATA CONTAINED IN THIS MAP IS PRODUCED IN WHOLE OR PART FROM THE THOMAS BROS. MAPS® DIGITAL DATABASE. THIS MAP IS COPY-RIGHTED, AND REPRODUCED WITH PERMISSION GRANTED, BY THOMAS BROS. MAPS® ALL RIGHTS RESERVED

TO MAP 4018 WEST

1082 1083

1084 1085

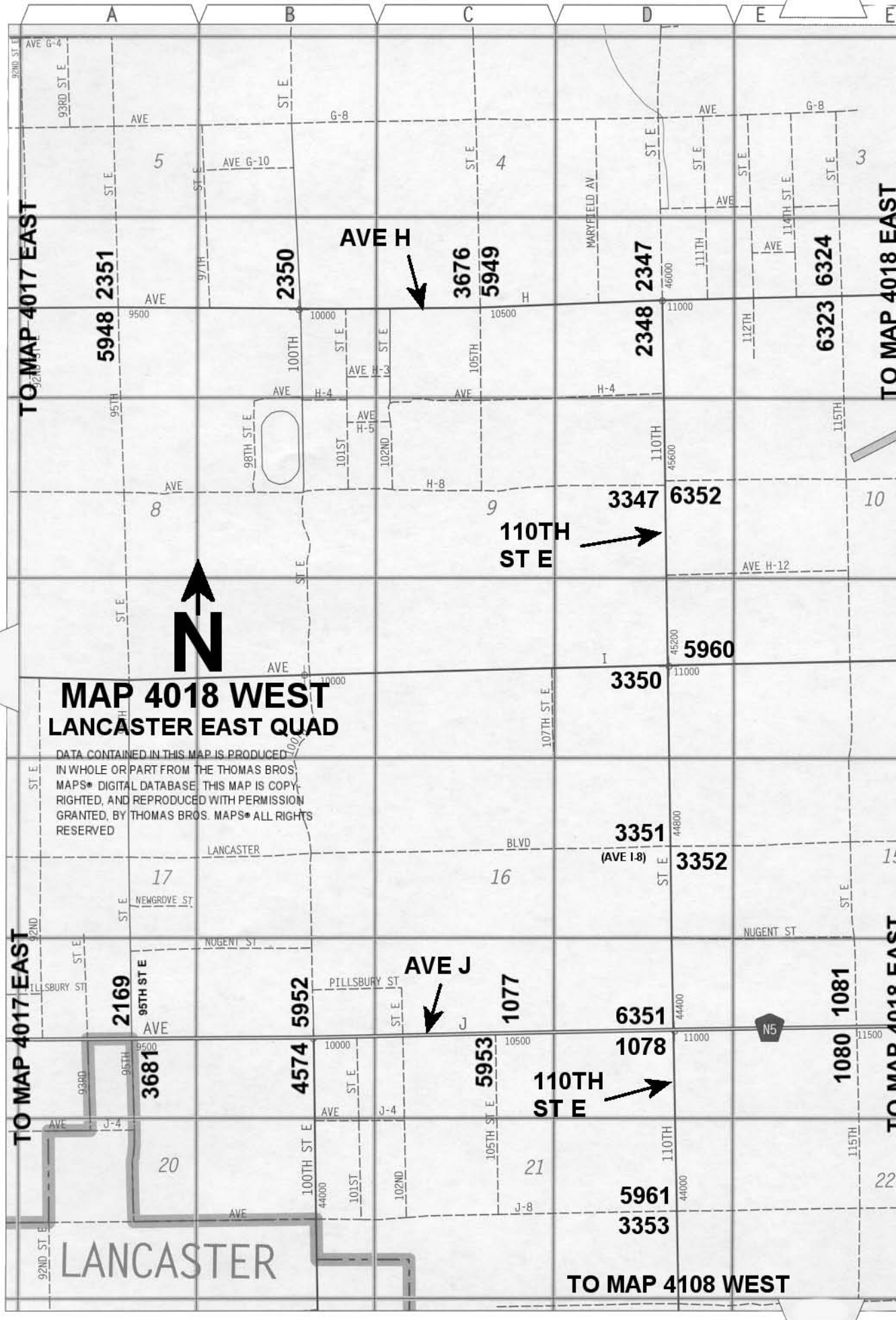
3680 1087

1088 1089

TO MAP A

AVE J

130TH ST E



**MAP 4018 WEST
LANCASTER EAST QUAD**

DATA CONTAINED IN THIS MAP IS PRODUCED
IN WHOLE OR PART FROM THE THOMAS BROS.
MAPS® DIGITAL DATABASE THIS MAP IS COPY
RIGHTED, AND REPRODUCED WITH PERMISSION
GRANTED, BY THOMAS BROS. MAPS® ALL RIGHTS
RESERVED



AVE H



AVE J



**110TH
ST E**



LANCASTER

TO MAP 4017 EAST

TO MAP 4018 EAST

TO MAP 4017 EAST

TO MAP 4018 EAST

TO MAP 4108 WEST

5948 2351

2350

3676
5949

2347
2348

6324
6323

8

3347
110TH
ST E

6352

10

3350

5960

17

16

3351
(AVE I-8)

3352

15

2169

4574 5952

1077

6351

1081
1080

3681

5953

1078
110TH
ST E

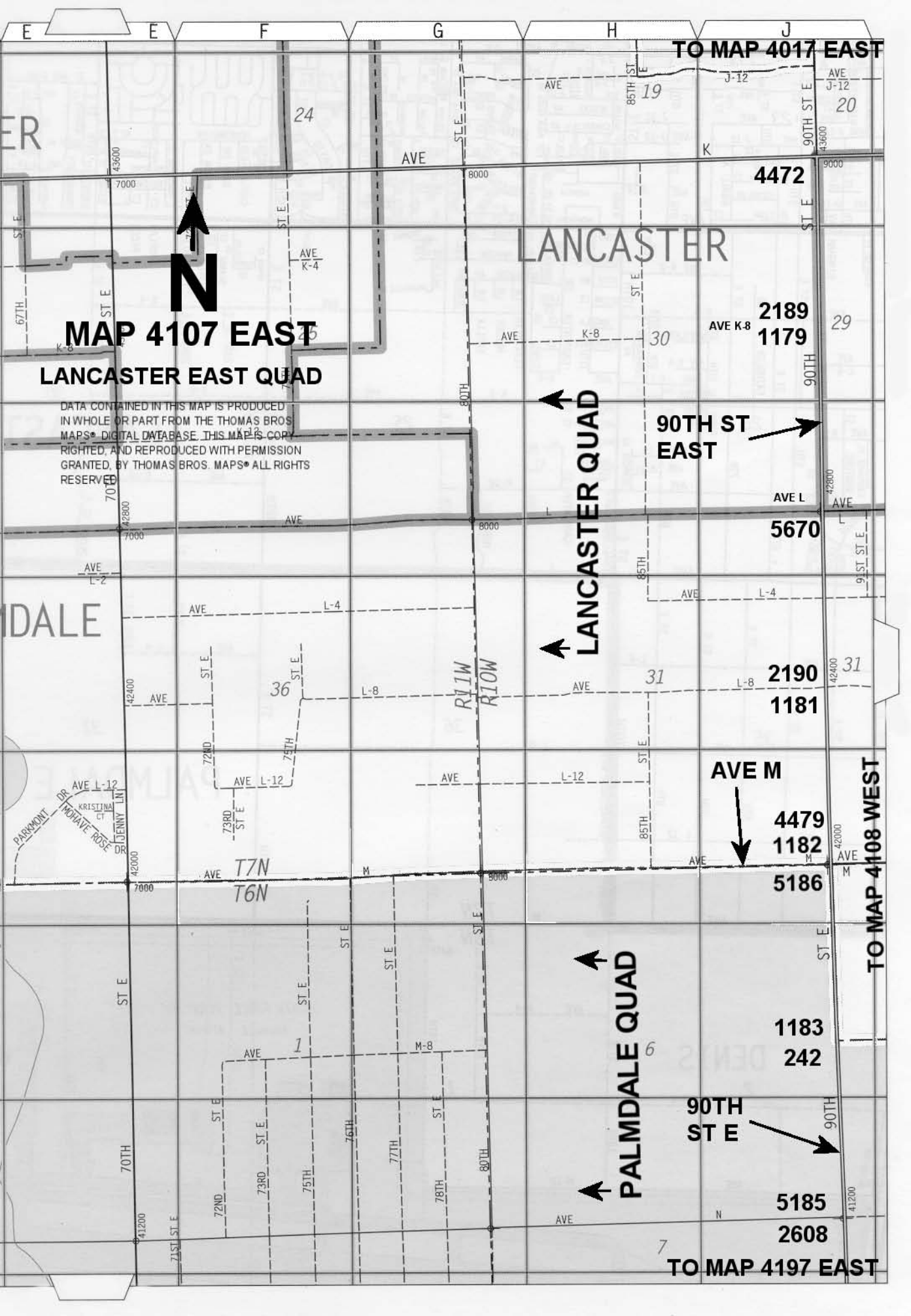
1078

20

21

5961
3353

22



TO MAP 4017 EAST

N

**MAP 4107 EAST
LANCASTER EAST QUAD**

DATA CONTAINED IN THIS MAP IS PRODUCED IN WHOLE OR PART FROM THE THOMAS BROS. MAPS® DIGITAL DATABASE. THIS MAP IS COPYRIGHTED, AND REPRODUCED WITH PERMISSION GRANTED, BY THOMAS BROS. MAPS® ALL RIGHTS RESERVED.

LANCASTER

LANCASTER QUAD

90TH ST EAST

TO MAP 4108 WEST

PALMDALE QUAD

TO MAP 4197 EAST

24

4472

2189
1179

5670

2190
1181

AVE M

4479
1182

5186

1183
242

5185
2608

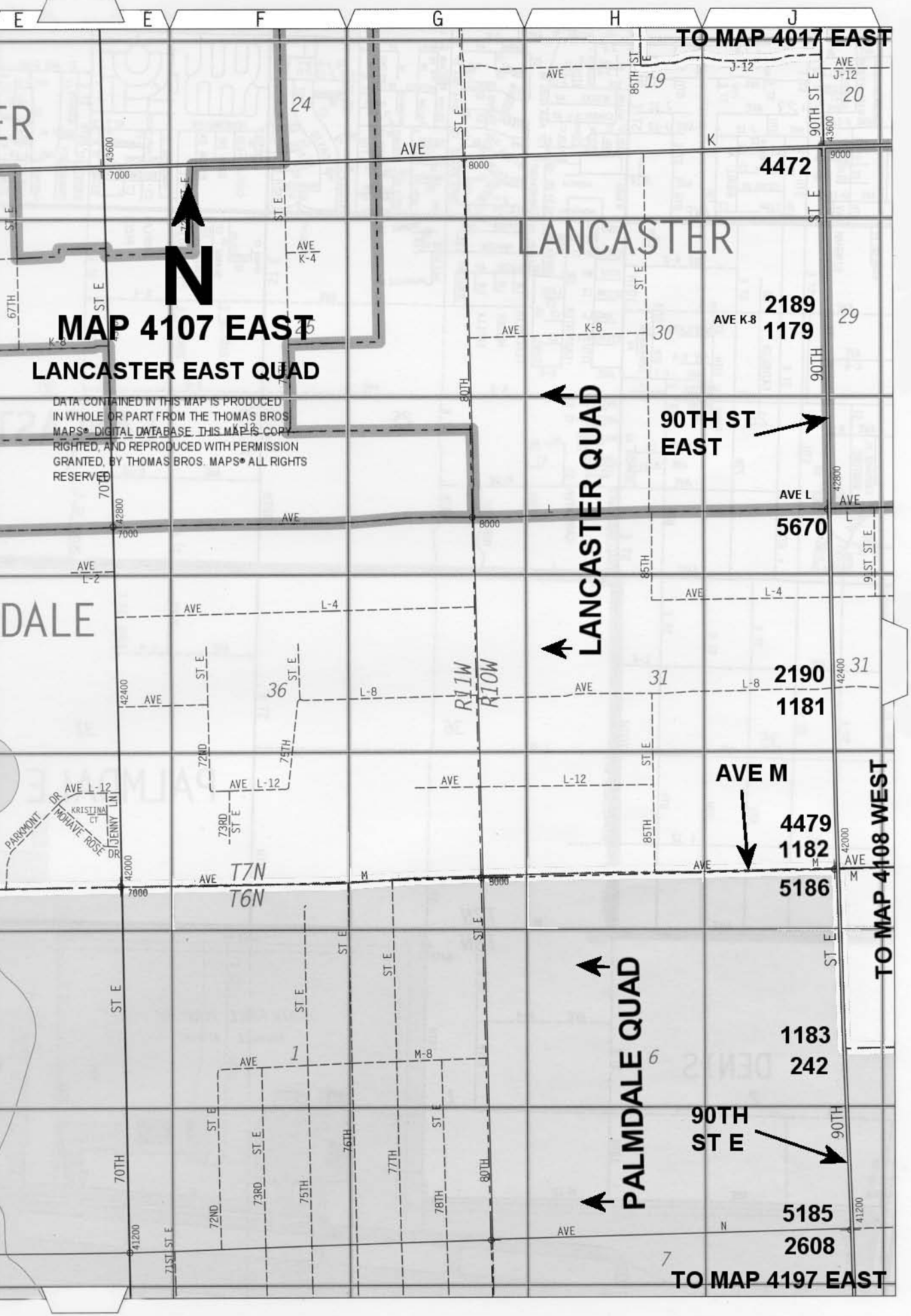
PALMDALE

PARKMONT DR
MONTE ROSE
KRISTINA CT
DR JENNY LN

T7N
T6N

90TH ST E

7



**MAP 4108 WEST
LANCASTER EAST QUAD**

DATA CONTAINED IN THIS MAP IS PRODUCED IN WHOLE OR IN PART FROM THE THOMAS BROS. MAPS® DIGITAL DATABASE. THIS MAP IS COPYRIGHTED, AND REPRODUCED WITH PERMISSION GRANTED BY THOMAS BROS. MAPS® ALL RIGHTS RESERVED



TO MAP 4018 WEST

**5962
4501**

**110TH
ST E**

PALMDALE

AVE M

TO MAP 4107 EAST

2037

2036

2039

2038

3338

5964

5965

PALMDALE INTERNATIONAL AIRPORT
(PROPOSED)



MAP 4109 WEST

DATA CONTAINED IN THIS MAP IS PRODUCED IN WHOLE OR PART FROM THE THOMAS BROS. MAPS® DIGITAL DATABASE. THIS MAP IS A COPY, RIGHTED, AND REPRODUCED WITH PERMISSION GRANTED, BY THOMAS BROS. MAPS® ALL RIGHTS RESERVED

TO MAP B

5966 4768

1097 1096

150TH ST E

1098 1099

1101

2049 1102

150TH ST E

2700

1104

1107

2701

TO MAP 4199 WEST

20

29

32

2050 2051

LLANO QUAD

TO MAP 4109 EAST

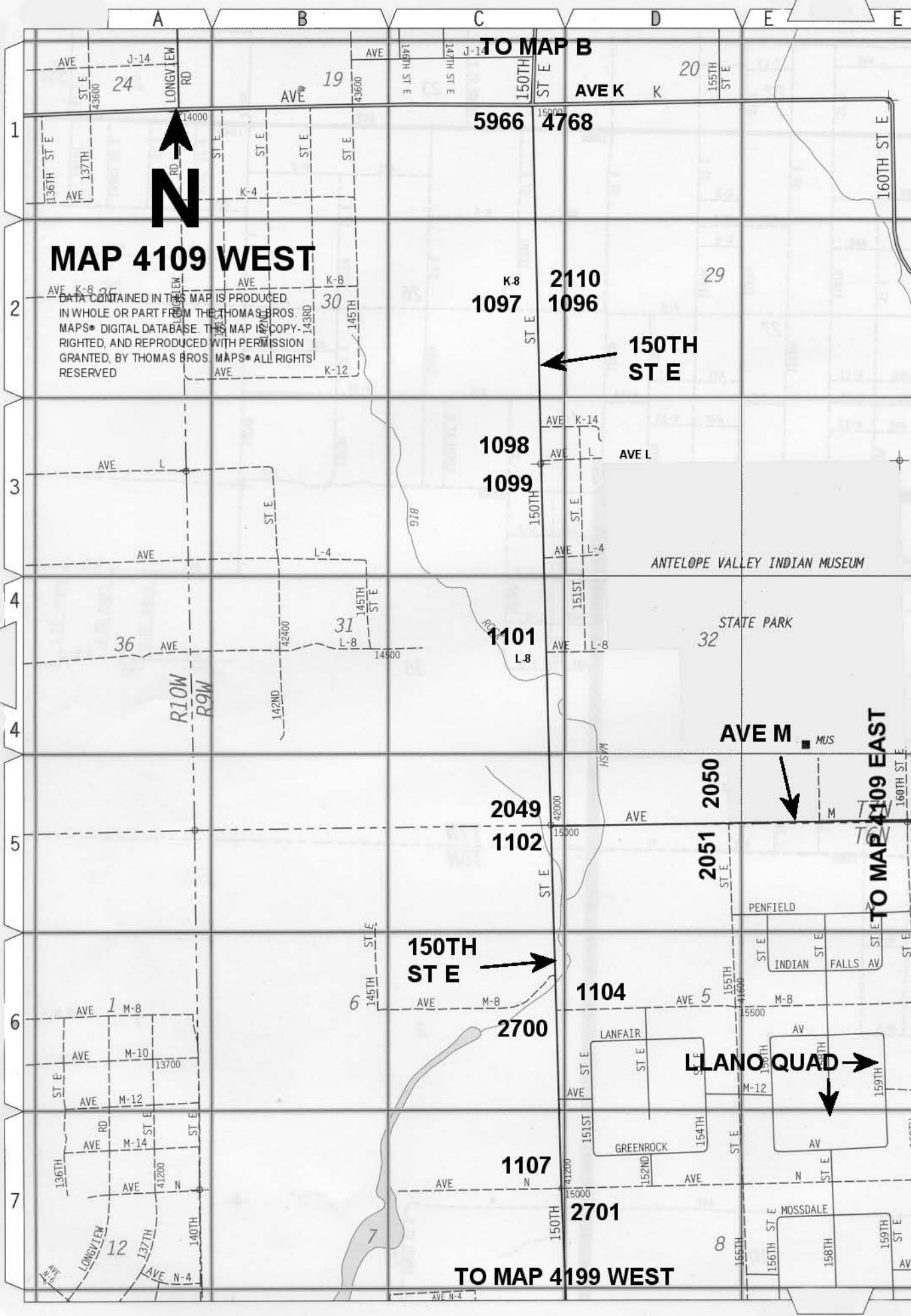
ANTELOPE VALLEY INDIAN MUSEUM

STATE PARK

PENFIELD

INDIAN FALLS AV

MOSSDALE



TO MAP C

AVE

K

AVE

K

202ND ST E

ST E

207TH ST E

RD

42200

29

21700

28

K-8



MAP 4110 EAST

DATA CONTAINED IN THIS MAP IS PRODUCED IN WHOLE OR PART FROM THE THOMAS BROS. MAPS® DIGITAL DATABASE. THIS MAP IS COPY-RIGHTED, AND REPRODUCED WITH PERMISSION GRANTED, BY THOMAS BROS. MAPS® ALL RIGHTS RESERVED

AVE L

220TH ST E

L-8

AVE L-8

AVE

L-8

32

33

31

AVE L-4

207TH ST E

212TH

ST E

215TH

ST E

AVE M

5849

5850

3400

TO MAP C

TO MAP 4110 WEST

3394

3393

3396

3395

3398

3397

42300

21500

21000

RD

ST E



AVE

M-8

5

AVE

M-8

4

LLANO QUAD



205TH

VISTA

41600

215TH

AVE

N

22000

202ND ST E

AVE N-2

203RD ST E

AVE N-4

AVE N-5

AVE N-6

7

212TH ST E

8

ST E

AVE 9

N-4

220TH

23

26
SADDLEBACK BUTTE
STATE PARK

TO MAP B

AVE
AVE K

25

ST E
200TH
42800

202ND ST E

K-8



MAP 4110 WEST

DATA CONTAINED IN THIS MAP IS PRODUCED
IN WHOLE OR PART FROM THE THOMAS BROS.
MAPS® DIGITAL DATABASE. THIS MAP IS COPY-
RIGHTED, AND REPRODUCED WITH PERMISSION
GRANTED, BY THOMAS BROS. MAPS® ALL RIGHTS
RESERVED

AVE 35 L-4

36
200TH
ST E



R9W
R8W

AVE M

M

TO MAP 4109 EAST

AVE L-12
181ST ST E
AVE L-13
182ND ST E

5851
4136

3193

3192

3190

3191

3188

3189

3187

3186

TO MAP 4110 EAST

AVE M-4
185TH ST E
186TH ST E
187TH ST E
188TH ST E
M-8
190TH ST E

T7N
T6N

AVE 2

LLANO QUAD



AVE M-12

AVE 18000

AVE 19000

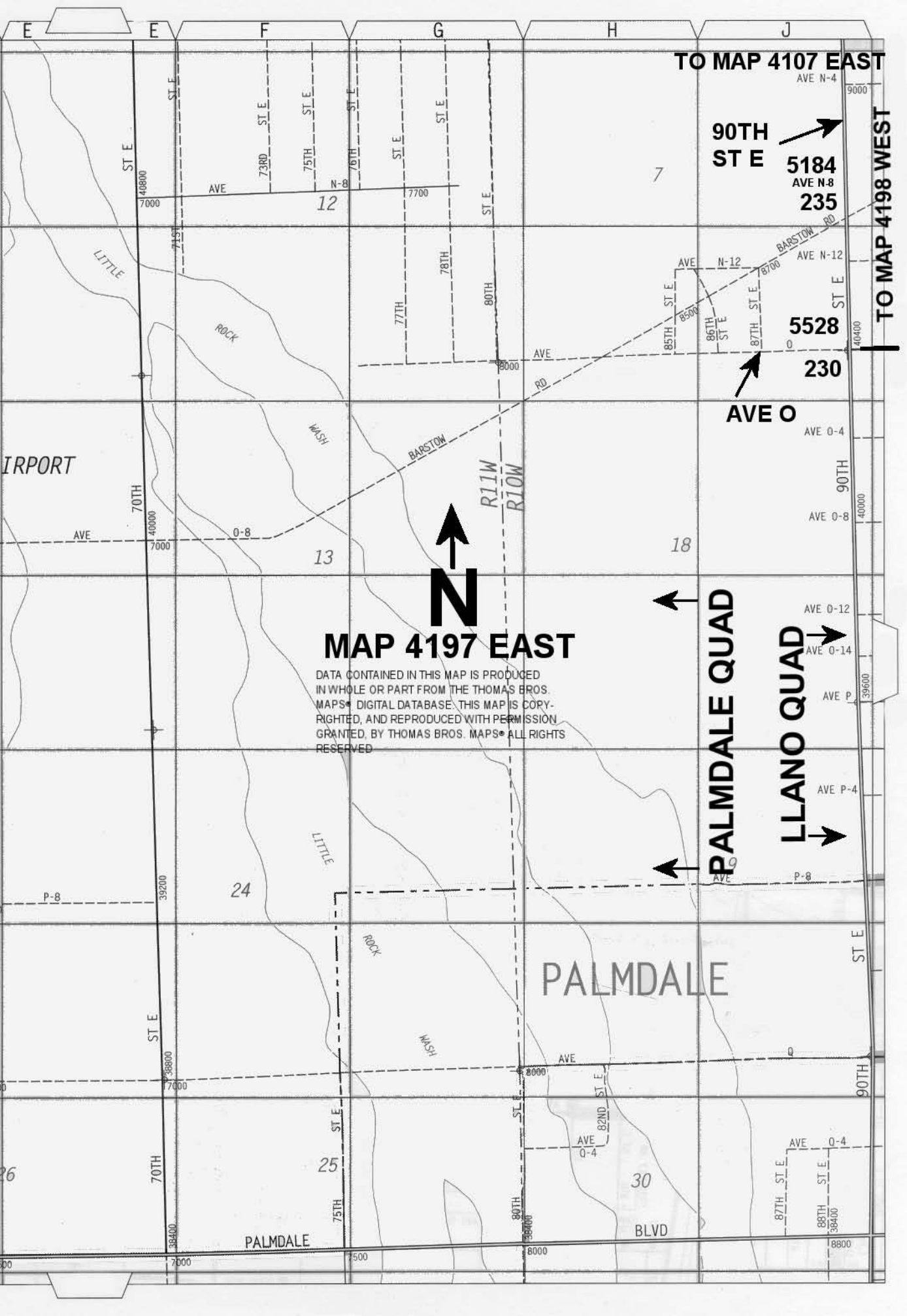
N

180TH ST E
181ST ST E
AVE 18200
182ND ST E
184TH ST E
185TH ST E
11
N-4
AVE N-5

12

195TH ST E
197TH ST E
AVE N-2
AVE N-4

202ND ST E
203RD ST E
AVE N-1
AVE N-2
AVE N-3
AVE N-4



TO MAP 4107 EAST

90TH ST E

5184
AVE N-8
235

5528
230

AVE O

MAP 4197 EAST

DATA CONTAINED IN THIS MAP IS PRODUCED IN WHOLE OR PART FROM THE THOMAS BROS. MAPS® DIGITAL DATABASE. THIS MAP IS COPYRIGHTED, AND REPRODUCED WITH PERMISSION GRANTED, BY THOMAS BROS. MAPS® ALL RIGHTS RESERVED

PALMDALE QUAD

LLANO QUAD

PALMDALE

PALMDALE

BLVD

TO MAP 4198 WEST

AIRPORT

LITTLE

ROCK

WASH

BARSTOW

R11W
R10W

LITTLE

ROCK

WASH

ST E

90TH

ST E

8800

ST E

ST E

ST E

ST E

ST E

ST E

ST E

ST E

77TH

78TH

80TH

7

12

18

13

24

25

30

70TH

ST E

70TH

38400

7000

7000

39200

36800

7000

AVE

73RD

75TH

76TH

77TH

78TH

80TH

AVE

85TH

86TH

87TH

AVE

8700

AVE

90TH

AVE P

AVE P-4

AVE

AVE

87TH

88TH

9000

40400

40000

39600

P-8

7000

8800

00

7000

7500

8000

8800



TO MAP 4197 EAST

TO MAP 4198 EAST

5865

4179 5864

4176

5863

5862

AVE O



MAP 4198 WEST

PALMDALE
INTERNATIONAL
AIRPORT
(PROPOSED)

DATA CONTAINED IN THIS MAP IS PRODUCED
IN WHOLE OR PART FROM THE THOMAS BROS.
MAPS® DIGITAL DATABASE. THIS MAP IS COPY-
RIGHTED, AND REPRODUCED WITH PERMISSION
GRANTED, BY THOMAS BROS. MAPS® ALL RIGHTS
RESERVED

LLANO QUAD



PALMDALE

PALMDALE

BLVD



TO MAP 4109 WEST

TO MAP 4198 EAST

LLANO QUAD

LAKE LOS ANGELES



MAP 4199 WEST

DATA CONTAINED IN THIS MAP IS PRODUCED IN WHOLE OR PART FROM THE THOMAS BROS. MAPS® DIGITAL DATABASE. THIS MAP IS COPYRIGHTED, AND REPRODUCED WITH PERMISSION GRANTED, BY THOMAS BROS. MAPS® ALL RIGHTS RESERVED

150TH ST E

AVE O

2702

5855

5858

2704

1014

5856

5857

12

7

13

18

17

24

19

20

25

30

29

PALMDALE

BLVD

1

2

3

4

4

5

6

7

A

B

C

D

E

E

1

2

3

4

4

5

6

7

8

138TH ST E

145TH ST E

147TH ST E

150TH ST E

155TH ST E

156TH ST E

158TH ST E

159TH ST E

137TH ST E

140TH ST E

145TH ST E

150TH ST E

151ST ST E

152ND ST E

154TH ST E

155TH ST E

158TH ST E

137TH ST E

140TH ST E

145TH ST E

150TH ST E

151ST ST E

152ND ST E

154TH ST E

155TH ST E

158TH ST E

137TH ST E

140TH ST E

145TH ST E

150TH ST E

151ST ST E

152ND ST E

154TH ST E

155TH ST E

158TH ST E

137TH ST E

140TH ST E

145TH ST E

150TH ST E

151ST ST E

152ND ST E

154TH ST E

155TH ST E

158TH ST E

137TH ST E

140TH ST E

145TH ST E

150TH ST E

151ST ST E

152ND ST E

154TH ST E

155TH ST E

158TH ST E

137TH ST E

140TH ST E

145TH ST E

150TH ST E

151ST ST E

152ND ST E

154TH ST E

155TH ST E

158TH ST E

137TH ST E

140TH ST E

145TH ST E

150TH ST E

151ST ST E

152ND ST E

154TH ST E

155TH ST E

158TH ST E

137TH ST E

140TH ST E

145TH ST E

150TH ST E

151ST ST E

152ND ST E

154TH ST E

155TH ST E

158TH ST E

137TH ST E

140TH ST E

145TH ST E

150TH ST E

151ST ST E

152ND ST E

154TH ST E

155TH ST E

158TH ST E

137TH ST E

140TH ST E

145TH ST E

150TH ST E

151ST ST E

152ND ST E

154TH ST E

155TH ST E

158TH ST E

137TH ST E

140TH ST E

145TH ST E

150TH ST E

151ST ST E

152ND ST E

154TH ST E

155TH ST E

158TH ST E

137TH ST E

140TH ST E

145TH ST E

150TH ST E

151ST ST E

152ND ST E

154TH ST E

155TH ST E

158TH ST E

137TH ST E

140TH ST E

145TH ST E

150TH ST E

151ST ST E

152ND ST E

154TH ST E

155TH ST E

158TH ST E

137TH ST E

140TH ST E

145TH ST E

150TH ST E

151ST ST E

152ND ST E

154TH ST E

155TH ST E

158TH ST E

137TH ST E

140TH ST E

145TH ST E

150TH ST E

151ST ST E

152ND ST E

154TH ST E

155TH ST E

158TH ST E

138TH ST E

140TH ST E

145TH ST E

150TH ST E

151ST ST E

152ND ST E

154TH ST E

155TH ST E

158TH ST E

137TH ST E

140TH ST E

145TH ST E

150TH ST E

151ST ST E

152ND ST E

154TH ST E

155TH ST E

158TH ST E

137TH ST E

140TH ST E

145TH ST E

150TH ST E

151ST ST E

152ND ST E

154TH ST E

155TH ST E

158TH ST E

137TH ST E

140TH ST E

145TH ST E

150TH ST E

151ST ST E

152ND ST E

154TH ST E

155TH ST E

158TH ST E

137TH ST E

140TH ST E

145TH ST E

150TH ST E

151ST ST E

152ND ST E

154TH ST E

155TH ST E

158TH ST E

137TH ST E

140TH ST E

145TH ST E

150TH ST E

151ST ST E

152ND ST E

154TH ST E

155TH ST E

158TH ST E

137TH ST E

140TH ST E

145TH ST E

150TH ST E

151ST ST E

152ND ST E

154TH ST E

155TH ST E

158TH ST E

137TH ST E

140TH ST E

145TH ST E

150TH ST E

151ST ST E

152ND ST E

154TH ST E

155TH ST E

158TH ST E

137TH ST E

140TH ST E

145TH ST E

150TH ST E

151ST ST E

152ND ST E

154TH ST E

155TH ST E

158TH ST E

137TH ST E

140TH ST E

145TH ST E

150TH ST E

151ST ST E

152ND ST E

154TH ST E

155TH ST E

158TH ST E

137TH ST E

140TH ST E

145TH ST E

150TH ST E

151ST ST E

152ND ST E

154TH ST E

155TH ST E

158TH ST E

137TH ST E

140TH ST E

145TH ST E

150TH ST E

151ST ST E

152ND ST E

154TH ST E

155TH ST E

158TH ST E

137TH ST E

140TH ST E

145TH ST E

150TH ST E

151ST ST E

152ND ST E

154TH ST E

155TH ST E

1

QUAD YEAR	ELEV FOOT/METER	DESCRIPTION	BM NUMBER
BASELINE (1998)	2,578.945 786.064	RDBM TAG IN CONC FENCE FTG @ EDISON SUB STA @ SE COR 90TH ST E & AVE O 9M E & 9M S/O C/L INT	L 230
BASELINE (1998)	2,563.338 781.307	CS MON IN WELL 550MM DN @ C/L INT 90TH ST E & AVE N-8 MKD (1/4 COR 7,8,T6N,R10W)	L 235
BASELINE (1998)	2,538.446 773.720	CS MON IN WELL 450MM DN @ C/L INT 90TH ST E & AVE M-8 MKD (1/4 COR 5,6,T6N,R10W)	L 242
LANCASTER (EAST) (2004)	2,443.375 744.743	CS MON IN WELL 400MM DN @ C/L INT 90TH ST E & AVE J MKD (1/4 SEC 18,17,19,20,T7N,R10W,1926)	L 271
LANCASTER (EAST) (2004)	2,425.829 739.395	CS MON IN WELL 500MM DN @ C/L INT 90TH ST E & AVE I-8 MKD (1/4 SEC 17,18,T7N,R10W)	L 274
LANCASTER (EAST) (2004)	2,413.203 735.546	CS MON IN WELL 300MM DN @ C/L INT 90TH ST E & AVE I MKD (CO SURV 7,8,17,18,T7N,R10W)	L 278
LANCASTER (EAST) (2004)	2,355.626 717.997	CS MON 400MM DN @ C/L INT 90TH ST E & AVE F MKD (CO SURV 30,29,31,32,R10W,T8N,RE 2177)	L 434
LANCASTER (EAST) (2004)	2,366.006 721.161	50MM IP W/CONC PLUG & BT SPK IN WELL 400MM DN @ C/L INT 90TH ST E & AVE F-8	L 436
LANCASTER (EAST) (2004)	2,374.996 723.901	RD MON IN WELL 200MM DN @ SE COR 90TH ST E & AVE G 9M E & 12M S/O C/L INT MKD (958) MKR POST 600MM E/O MON	L 438
BASELINE (1998)	2,649.466 807.559	RDBM MON 150MM DN 1.5M NE/O PP (NO#) 11.6M N/O C/L AVE O & 111M W/O 150TH ST E MKD (1960) MKR POST 600MM N/O MON	L 1014
BASELINE (1998)	2,587.383 788.636	CSBM MON FL @ SW COR AVE M & 170TH ST E 38M S & 7M W/O C/L INT MKD (BM 106-90 1959) MKR POST ON W SIDE MON (BENT OVER)	L 1066
LANCASTER (EAST) (2004)	2,584.059 787.624	CS MON IN WELL 430MM DN @ C/L INT 170TH ST E & AVE L-8 MKD (1/4 COR 33,34,T7N,R9W,RE 5869)	L 1067
LANCASTER (EAST) (2004)	2,581.259 786.770	CS MON IN WELL 430MM DN @ C/L INT 170TH ST E & AVE L MKD (33,34,27,28,R9W,T7N,RE 5869)	L 1068
LANCASTER (EAST) (2004)	2,564.692 781.720	USGS MON 125MM DN 2M SW/O PP #423619E 8M S/O C/L AVE K-8 & 76M W C/L 170TH ST E MKD (LS 17 1929) MKR POST 600MM W/O MON	L 1069
LANCASTER (EAST) (2004)	2,460.123 749.848	RDBM MON IN WELL W/COVER 1.5M W/O PP (NO#) 9M N/O C/L AVE J & 61M E/O C/L FUT 105TH ST E	L 1077
LANCASTER (EAST) (2004)	2,454.057 747.999	CS MON IN WELL 400MM DN @ C/L INT AVE J & 110TH ST E MKD (CO SURV 15,16,21,22,T7N,R10W,1925)	L 1078
LANCASTER (EAST) (2004)	2,461.442 750.250	RDBM MON IN WELL W/COVER 1M E/O PP (NO#) 9M N/O C/L AVE J & 32M W/O C/L FUT 115TH ST E	L 1080
LANCASTER (EAST) (2004)	2,459.918 749.785	RDBM MON IN WELL W/COVER 1M W/O PP (NO#) 9M N/O C/L AVE J & 58M E/O C/L FUT 115TH ST E (MKR 600MM N/O MON)	L 1081
LANCASTER (EAST) (2004)	2,461.700 750.328	RDBM MON IN WELL 4M E/O PP (NO#) 9M N/O C/L AVE J & 20M W/O C/L FUT 120TH ST E	L 1082
LANCASTER (EAST) (2004)	2,460.146 749.855	RDBM MON IN WELL 450MM BELOW SURFACE 2M E/O PP #4118695E 9M N/O C/L AVE J & 59M E/O C/L FUT 120TH ST E	L 1083

QUAD YEAR	ELEV FOOT/METER	DESCRIPTION	BM NUMBER
LANCASTER (EAST) (2004)	2,464.973 751.326	RDBM MON IN WELL W/COVER 9M N/O C/L AVE J & 55M W/O C/L 125TH ST E 2ME/O PP #1014830E MKR POST 600MM N/O MON	L 1084
LANCASTER (EAST) (2004)	2,465.879 751.602	RBBM MON IN WELL W/COVER 2M W/O PP (NO#) 9M N/O C/L AVE J & 44M E/O C/L 125TH ST E MKR POST 600MM N/O MON	L 1085
LANCASTER (EAST) (2004)	2,468.671 752.453	CS MON IN WELL 600MM DN @ C/L INT AVE J & 130TH ST E MKD (CO SURV 13,14,23,24,T7N,R10W,RE 2177)	L 1087
LANCASTER (EAST) (2004)	2,476.484 754.835	CS MON IN WELL @ C/L INT AVE J & 135TH ST E MKD (1/4 COR 13,24,T7N,R10W)	L 1088
LANCASTER (EAST) (2004)	2,480.142 755.950	RDBM MON IN WELL W/COVER 1.5M NE PP (NO#) 11M N/O C/L AVE J & 110M E/O 135TH ST E	L 1089
LANCASTER (EAST) (2004)	2,487.112 758.074	CS MON IN WELL 370MM DN @ C/L INT AVE J & 140TH ST E MKD (13,24,18,19,T7N,R10W,R9W)	L 1090
LANCASTER (EAST) (2004)	2,490.034 758.965	CSBM MON 150MM UP 1M W/O PP #101488E @ NW COR AVE J & 140TH ST E 27.5M N & 11M W/O C/L INT MKD (BM 106-102 1959)	L 1091
LANCASTER (EAST) (2004)	2,491.396 759.380	CSBM MON 150MM UP 12M S/O C/L AVE J NR C/L 145TH E 17.4M S/O PP #390449E MKD (BM 106-101 1959)	L 1092
LANCASTER (EAST) (2004)	2,532.490 771.905	RDBM MON IN WELL 850MM BELOW SURFACE 30.5M N & 11M E/O C/L INT 150TH ST E & AVE K-8 MKD (1960) MKR POST 600MM E/O MON	L 1096
LANCASTER (EAST) (2004)	2,533.853 772.321	RDBM MON IN WELL 600MM BELOW SURFACE 30.5M S & 11M E/O C/L INT 150TH ST E & AVE K-8 MKD (1960) MKR POST 600MM E/O MON	L 1097
LANCASTER (EAST) (2004)	2,551.092 777.575	RDBM MON IN WELL FLUSH (180MM BELOW LID) 30.5M N & 11M E/O C/L INT 150TH ST E & AVE L MKD (1960) MON 2.7M E/O PP (#2365951E)	L 1098
LANCASTER (EAST) (2004)	2,550.177 777.296	CS MON IN WELL 550MM DN @ C/L INT 150TH ST E & AVE L MKD (CO SURV 29,30,31,32,T7N,R9W,1927)	L 1099
LANCASTER (EAST) (2004)	2,563.696 781.417	CS MON IN WELL 250MM DN @ C/L INT 150TH ST E & AVE L-8 MKD (1/4 COR 31,32,T7N,R9W,RE 5869)	L 1101
BASELINE (1998)	2,578.341 785.880	CS MON IN WELL 330MM DN @ C/L INT AVE M & 150TH ST E MKD (SEC COR 31,32,5,6,T6N,T7N,R9W,RE 5869)	L 1102
BASELINE (1998)	2,589.873 789.395	CS MON IN WELL 600MM DN @ C/L INT 150TH ST E & AVE M-8 MKD (1/4 SEC 5,6,T6N,R9W)	L 1104
BASELINE (1998)	2,606.071 794.332	CS MON IN WELL 700MM DN @ C/L INT 150TH ST E & AVE N MKD (5,6,7,8,T7N,R9W)	L 1107
LANCASTER (EAST) (2004)	2,472.589 753.647	CS MON IN WELL 450MM DN @ C/L INT 140TH ST E & PROP AVE I-8 32M S/O PP #1014890E MKD (1/4 COR 13,18,R9W,T7N)	L 1141
LANCASTER (EAST) (2004)	2,471.852 753.423	CSBM MON 150MM UP 10M W/O C/L 140TH ST E & 210M N/O AVE I-8 1.2M S/O PP #1014892E MKD (BM 106- 103 1959) MKR POST 600MM S/O MON	L 1142
LANCASTER (EAST) (2004)	2,462.115 750.455	CS MON IN WELL 610MM DN @ C/L INT 140TH ST E & FUT AVE I MKD (SEC COR 12,7,13,18,RE 2177)	L 1143

QUAD YEAR	ELEV FOOT/METER	DESCRIPTION	BM NUMBER
LANCASTER (EAST) (2004)	2,452.455 747.511	CS MON IN WELL 225MM DN @ C/L INT 140TH ST E & AVE H-8 68.6M S/O S SIDE PROD HSE #45615 MKD (1/4 COR 12,7,R10W,R9W,T7N,RE 2177)	L 1144
LANCASTER (EAST) (2004)	2,444.867 745.198	CSBM MON 150MM UP 1M W/O PP #767471E @ NW COR 140TH ST E & AVE H 10M W & 21M N/O C/L INT MKD (BM 106-106 1959)	L 1145
LANCASTER (EAST) (2004)	2,443.380 744.744	CS MON IN WELL 500MM DN @ C/L INT 140TH ST E & AVE H MKD (SEC COR 1,6,12,7,R10W,R9W,T7N)	L 1146
LANCASTER (EAST) (2004)	2,452.081 747.397	CS MON IN WELL 650MM DN @ C/L INT 140TH ST E & AVE G-8 20M SE/O PP #426135E & 24.4M SW/O PP (#878100E) MKD (1/4 COR 1,6,R10W,R9W,T7N,RE 2177)	L 1147
BASELINE (1998)	2,454.359 748.090	CSBM MON 150MM UP @ NW COR 140TH ST E & AVE G 18M W & 10M N/O C/L INT MKD (BM 106-108 1959) MKR POST 600MM E/O MON	L 1148
BASELINE (1998)	2,463.538 750.888	CSBM MON 150MM UP 15M E C/L 140TH ST E & 19M N/O C/L FUT AVE F MKD (BM 106-110 1959) WOOD POST 300MM UP 3M S/O MON	L 1151
BASELINE (1998)	2,461.074 750.137	CS MON IN WELL 250MM DN @ C/L INT 140TH ST E & FUT AVE F 21.6M NW/O 50MM IP & PLUG 150MM UP MKD (SEC COR 25,30,31,36,R10W,R9W,T8N)	L 1152
BASELINE (1998)	2,427.187 739.808	CS MON IN WELL 150MM DN @ C/L INT 140TH ST E & AVE E MKD (CO SURV 19,24,25,30,R10W,R9N,T8N)	L 1155
BASELINE (1998)	2,374.782 723.835	CSBM MON FL 14M S/O C/L AVE E ON C/L PROD 135TH ST E MKD (BM 106-113 1959) MKR POST 600MM E MON	L 1156
BASELINE (1998)	2,370.186 722.434	CSBM MON FL 9M S & 11M W/O C/L INT AVE E & 130TH ST E 3M SW/O W END HDWL & MI MKR #13.02	L 1157
BASELINE (1998)	2,363.837 720.499	CSBM MON 150MM UP 8.5M N/O C/L AVE E & 79M W/O 115TH ST E 15.5M E/O C/L DIRT RD TO HSE #11337 MKD (BM 106-117 1959) MKR POST 600MM N/O MON	L 1160
BASELINE (1998)	2,350.619 716.470	CSBM MON 150MM UP 14.6M N & 6.7M E/O C/L INT AVE E & 100TH ST E MKD (BM 106-120 1959)	L 1163
BASELINE (1998)	2,343.863 714.411	CSBM MON 150MM UP 14M S & 10M E/O C/L INT AVE E & 90TH ST E MKD (BM 106-22 1969)	L 1165
LANCASTER (EAST) (2004)	2,348.690 715.883	RDBM TAG IN CONC PAD FLUSH 15M S & 15M E/O C/L INT 90TH ST E & AVE E-8 MKR POST 600MM E/O MON	L 1167
LANCASTER (EAST) (2004)	2,357.436 718.549	CSBM MON FL 9M N & 22M E/O C/L INT AVE F & 90TH ST E MKD (BM 116-6 1961) MKR POST 600MM S/O MON	L 1168
LANCASTER (EAST) (2004)	2,366.771 721.394	CSBM MON 75MM UP 22M N & 9M E/O C/L INT 90TH ST E & AVE F-8 MKD (BM 116-5 1961) MKR 600MM W MON	L 1169
LANCASTER (EAST) (2004)	2,376.102 724.238	CSBM MON 100MM UP 21M S & 8.2M W/O C/L INT 90TH ST E & AVE G MKD (116-4 1961) MKR 600MM E/O MON	L 1170
LANCASTER (EAST) (2004)	2,384.788 726.886	CSBM MON 100MM UP 6M S & 24.4M E/O C/L INT 90TH ST E & AVE G-8 MKD (BM 116-3 1961) MKR POST 300MM N/O MON (BENT)	L 1171

QUAD YEAR	ELEV FOOT/METER	DESCRIPTION	BM NUMBER
LANCASTER (EAST) (2004)	2,414.704 736.004	CSBM MON FL 9M S & 21M W/O C/L INT 90TH ST E & AVE I 1M E/O PP #955497E MKD (BM 107-25 1961) MKR POST 1M E/O MON	L 1174
LANCASTER (EAST) (2004)	2,425.435 739.275	CSBM MON FL 168M N & 11M E/O C/L INT 90TH ST E & AVE I-8 MKD (BM 107-25 1961) MKR 1M E/O MON	L 1175
LANCASTER (EAST) (2004)	2,516.217 766.945	CSBM MON 100MM UP 11M S & 10.4M E/O C/L INT 90TH ST E & AVE L-8 MKD (BM 107-19 1961)	L 1181
BASELINE (1998)	2,528.994 770.839	CSBM MON 100MM UP @ NE COR AVE M & 90TH ST E 11M N & 11M E/O C/L INT MKD (BM 107-18 1961) MRK PIPE 600MM N/E OF MON	L 1182
BASELINE (1998)	2,539.624 774.079	CSBM MON 100MM UP @ NE COR 90TH ST E & AVE M-8 12M N & 11.6M E/O C/L INT MKD (BM 107-17 1961) MKR POST 1M E/O MON	L 1183
LANCASTER (EAST) (2004)	2,533.039 772.073	CS MON IN WELL 650MM DN @ C/L INT AVE M & 95TH ST E MKD (1/4 COR 32,5,T6N,T7N,R10W)	L 2036
LANCASTER (EAST) (2004)	2,532.898 772.030	CEBM MON 100MM UP 11.6M S & 27M E/O C/L INT AVE M & 95TH ST E MKD (BM 122-1 1961) MKR POST 600MM N/O MON	L 2037
LANCASTER (EAST) (2004)	2,542.174 774.857	CS MON IN WELL 200MM DN @ C/L INT AVE M & 100TH ST E MKD (CO SURV 32,33,5,4,T6N,T7N,R10W,1925)	L 2038
LANCASTER (EAST) (2004)	2,544.543 775.579	CSBM MON 100MM UP @ SE COR AVE M & 100TH ST E 8M S & 23M E/O C/L INT MKD (BM 122-2 1961) MKR POST 600MM S/O MON (HAS BEEN HIT)	L 2039
BASELINE (1998)	2,578.597 785.958	CSBM MON 300MM DN @ NE COR AVE M & 150TH ST E 16M N & 10M E/O C/L INT MKD (BM 115-11 1961) MKR POST W/O MON (BENT OVER)	L 2049
BASELINE (1998)	2,578.650 785.974	CS MON IN WELL @ C/L INT AVE M & FUT 155TH ST E MKD (1/4 SEC COR 32,5,T6N,T7N,R9W)	L 2050
BASELINE (1998)	2,582.272 787.078	50MM IP W/NAIL 200MM UP @ NE COR AVE M & FUT 155TH ST E 15M N & 15M E/O C/L INT (USE E EDGE)	L 2051
BASELINE (1998)	2,579.696 786.293	50MM IP W/NAIL 200MM UP @ SW COR AVE M & FUT 160TH ST E 15M S & 15M W/O C/L INT (USE W EDGE)	L 2052
BASELINE (1998)	2,580.057 786.403	50MM IP W/NAIL 200MM UP @ NE COR AVE M & FUT 160TH ST E 15M N & 15M E/O C/L INT (USE E EDGE)	L 2053
BASELINE (1998)	2,580.799 786.629	50MM IP W/NAIL FLUSH @ SW COR AVE M & FUT 165TH ST E 15M S & 15M W/O C/L INT	L 2054
BASELINE (1998)	2,581.025 786.698	50MM IP W/NAIL 150MM UP @ NE COR AVE M FUT 165TH ST E 15M N & 15M E/O C/L INT	L 2055
LANCASTER (EAST) (2004)	2,564.159 781.558	CS MON IN WELL 600MM DN @ C/L INT 170TH ST E & AVE K-8 MKD (1/4 COR 27,28,R9W,T7N)	L 2109
LANCASTER (EAST) (2004)	2,534.155 772.413	CSBM MON 700MM DN 5M S & 10M E/O C/L INT 150TH ST E & AVE K-8 MKD (BM 115-14 1961) MKR POST 300MM E/O MON	L 2110
LANCASTER (EAST) (2004)	2,491.859 759.521	CS MON IN WELL 360MM DN @ C/L INT AVE J & 150TH ST E MKD (CO SURV 17,18,19,20,R9W,T7N)	L 2160
LANCASTER (EAST) (2004)	2,491.937 759.545	CS MON IN WELL 300MM DN @ C/L INT AVE J & FUT 145TH ST E MKD (1/4 COR 18,19,R9W,T7N)	L 2161

QUAD YEAR	ELEV FOOT/METER	DESCRIPTION	BM NUMBER
LANCASTER (EAST) (2004)	2,454.662 748.183	50MM IP 150MM UP @ C/L PROD AVE G-8 & 15M E/O C/L 140TH ST E	L 2162
BASELINE (1998)	2,458.263 749.280	50MM IP 150MM UP 15M W/O 140TH ST E ON C/L FUT F-8 MKR POST 300MM NE/O MON	L 2163
BASELINE (1998)	2,464.595 751.210	50MM IP W/CONC PLUG & NAIL 150MM UP 15M N & 15M E/O C/L INT 140TH ST E & AVE E-8 MKR POST 300MM NW/O MON	L 2164
LANCASTER (EAST) (2004)	2,348.731 715.895	CSBM MON FL @ SW COR 90TH ST E & AVE E-8 17M S & 8.2M W/O C/L INT MKD (116-7 1961) MKR POST 300MM E/O MON	L 2166
LANCASTER (EAST) (2004)	2,384.252 726.722	CS MON IN WELL 300MM DN @ C/L INT 90TH ST E & AVE G-8 MKD (1/4 SEC 5,6,R10W,T7N,RE 5869)	L 2167
LANCASTER (EAST) (2004)	2,402.407 732.256	CS MON IN WELL 225MM DN @ C/L INT 90TH ST E & AVE H-8 MKD (1/4 COR 7,8,T7N,R10W,RE5869)	L 2168
LANCASTER (EAST) (2004)	2,448.386 746.270	50MM IP W/CS TAG 100MM UP @ NW COR AVE J & 95TH ST E 12M N & 12M W/O C/L INT MKR 300MM S/O MON	L 2169
LANCASTER (EAST) (2004)	2,491.441 759.394	CS MON IN WELL 350MM DN @ C/L INT 90TH ST E & AVE K-8 MKD (1/4 SEC COR 29,30,R10W,T7N)	L 2189
LANCASTER (EAST) (2004)	2,514.806 766.515	CS MON IN WELL 300MM DN @ C/L INT 90TH ST E & FUT AVE L-8 MKD (CO SURV 1/4 31,32,R10W,T7N)	L 2190
LANCASTER (EAST) (2004)	2,435.768 742.424	50MM IP W/BOLT IN WELL 450MM DN @ C/L INT AVE H & 135TH ST E	L 2337
LANCASTER (EAST) (2004)	2,433.480 741.727	L&T IN W SIDE OF CONC STANDPIPE @ NE COR AVE H & 130TH ST E 19M N & 25M E/O C/L INT	L 2339
LANCASTER (EAST) (2004)	2,429.418 740.489	CS MON IN WELL 300MM DN @ C/L INT AVE H & 130TH ST E MKD (SEC COR 1,2,12,11,R10W,T7N)	L 2340
LANCASTER (EAST) (2004)	2,431.637 741.165	50MM IP W/CONC PLUG & CS TAG @ SE COR AVE H & 125TH ST E 12M E & 12M S/O C/L INT MKR POST 300MM N/O MON @ WLY P/L HSE #12501	L 2341
LANCASTER (EAST) (2004)	2,428.146 740.101	CS MON IN WELL 150MM DN @ C/L INT AVE H & 125TH ST E MKD (1/4 COR 2,11,R10W,T7N,RE 5869)	L 2342
LANCASTER (EAST) (2004)	2,420.635 737.812	50MM IP W/CONC PLUG & NAIL 100MM UP @ SE COR AVE H & 120TH ST E 15M S & 15M E/O C/L INT MKR POST 300MM N/O MON	L 2343
LANCASTER (EAST) (2004)	2,419.373 737.427	CS MON IN WELL 450MM DN @ C/L INT AVE H & 120TH ST E MKD (CO SURV 3,2,10,11,R10W,T7N)	L 2344
LANCASTER (EAST) (2004)	2,413.547 735.651	CS MON IN WELL 150MM DN @ C/L INT AVE H & 110TH ST E MKD (CO SURV 4,3,9,10,R10W,T7N)	L 2347
LANCASTER (EAST) (2004)	2,414.864 736.053	50MM IP W/CONC PLUG & NAIL 150MM UP @ NW COR AVE H & 110TH ST E 12M N & 12M W/O C/L INT MKR POST 300MM S/O MON	L 2348
LANCASTER (EAST) (2004)	2,399.303 731.310	CS MON IN WELL 300MM DN @ C/L INT AVE H & 100TH ST E MKD (5,4,8,9,R10W,T7N)	L 2350

QUAD YEAR	ELEV FOOT/METER	DESCRIPTION	BM NUMBER
LANCASTER (EAST) (2004)	2,396.962 730.596	CS MON IN WELL 200MM DN @ C/L INT AVE H & FUT 95TH ST E MKD (1/4 COR 5,8,T7N,R10W)	L 2351
LANCASTER (EAST) (2004)	2,376.566 724.380	CS MON IN WELL 200MM DN @ C/L INT 120TH ST E & FUT AVE E-8 MKD (1/4 COR 26,27,R10W,T8N,RE 5869)	L 2353
LANCASTER (EAST) (2004)	2,392.340 729.187	CS MON IN WELL 400MM DN @ C/L INT 120TH ST E & AVE F-8 MKD (1/4 SEC COR 34,35,T8N,R10W,RE 62)	L 2356
BASELINE (1998)	2,524.224 769.385	CSBM MON IN NW COR OF CONC WATER VALVE VAULT 15M E & 9M S/O C/L INT AVE G & 145TH ST E MKD (BM 124-1 1966)	L 2380
BASELINE (1998)	2,675.500 815.494	CSBM MON FL 9.4M N 18.3M E/O C/L INT AVE G & 155TH ST E MKD (BM 124-3 1966) MKR 300MM N/O MON	L 2384
BASELINE (1998)	2,750.257 838.280	RDBM TAG IN CONC F HYD BASE 10M S & 25M E/O C/L INT AVE G & 160TH ST E	L 2386
BASELINE (1998)	2,852.455 869.430	BOLT IN WELL 450MM DN @ C/L INT AVE G & 165TH ST E	L 2387
BASELINE (1998)	2,858.780 871.358	CSBM MON FLUSH @ NE COR AVE G & 165TH ST E 41M E & 9M N/O C/L INT MKD (BM 124-5 1966) MKR POST 600MM S/O MON	L 2388
BASELINE (1998)	2,935.266 894.671	CS MON IN WELL 550MM DN @ C/L INT AVE G & 170TH ST E MKD (SEC COR 33,34,4,3,T7N,T8N,R9W)	L 2389
BASELINE (1998)	2,976.700 907.300	CS MON IN WELL 150MM DN @ C/L INT AVE G & 175TH ST E MKD (1/4 COR 34,3,R9W,T8N,T7N)	L 2391
BASELINE (1998)	2,977.914 907.670	RDBM TAG IN NW COR CONC BASE OF F HYD @ SE COR AVE G & 175TH ST E 18M E & 10M S/O C/L INT	L 2392
BASELINE (1998)	3,051.037 929.958	CS MON IN WELL 350MM DN @ C/L INT AVE G & 180TH ST E MKD (SEC COR 34,35,3,2,R9W,T8N,T7N)	L 2393
BASELINE (1998)	3,091.201 942.200	CS MON IN WELL 450MM DN @ C/L INT AVE G & 185TH ST E MKD (1/4 COR 35,2,R9W,T8N,T7N)	L 2395
BASELINE (1998)	3,093.255 942.826	RDBM TAG IN NW COR CONC BASE OF F HYD @ SE COR AVE G & 185TH ST E 18M E & 10M S/O C/L INT	L 2396
BASELINE (1998)	3,129.830 953.974	CS MON IN WELL 450MM DN @ C/L INT AVE G & 190TH ST E MKD (35,36,2,1,T8N,T7N,R9W)	L 2397
BASELINE (1998)	3,129.203 953.783	50MM IP W/CONC PLUG & CS TAG 50MM UP @ NE COR AVE G & 190TH ST E 15M N & 15M E/O C/L INT	L 2398
BASELINE (1998)	3,075.286 937.349	CS MON IN WELL 450MM DN @ C/L INT AVE G & 195TH ST E MKD (1/4 COR 36,1,T7N,T8N,R9W)	L 2399
BASELINE (1998)	3,077.162 937.921	50MM IP W/CONC PLUG & CS TAG 200MM UP @ SW COR AVE G & 195TH ST E 15M S & 15M W/O C/L INT MKR 600MM N/O MON	L 2400
BASELINE (1998)	3,046.962 928.716	CS MON IN WELL 510MM DN @ C/L INT AVE G & 200TH ST E MKD (SEC COR 36,31,1,6,T7N,T8N,R8W,R9W,1927)	L 2401
LANCASTER (EAST) (2004)	3,033.771 924.696	CS MON IN WELL 200MM DN @ C/L INT 200TH ST E & AVE G-8 MKD (1/4 COR 1,6,T7N,R8W,R9W)	L 2403

QUAD YEAR	ELEV FOOT/METER	DESCRIPTION	BM NUMBER
LANCASTER (EAST) (2004)	3,031.443 923.987	40MM IP W/CONC PLUG & BRAD 75MM UP @ SW COR 200TH ST E & G-8 15M S & 15M W/O C/L INT	L 2404
LANCASTER (EAST) (2004)	2,997.986 913.789	CS MON IN WELL 200MM DN @ C/L INT 200TH ST E & AVE H MKD (SEC COR 1,6,12,7,R8W,R9W,T7N,RE 5869)	L 2405
LANCASTER (EAST) (2004)	2,999.772 914.333	40MM IP W/CONC PLUG & NAIL @ SW COR 200TH ST E & AVE H 15M S & 15M W/O C/L INT	L 2406
LANCASTER (EAST) (2004)	2,974.078 906.502	CS MON IN WELL 350MM DN @ C/L INT 200TH ST E & AVE H-8 MKD (1/4 COR 12,7,T7N,R9W,R8W)	L 2407
LANCASTER (EAST) (2004)	2,985.007 909.833	CS MON IN WELL 450MM DN @ C/L INT 200TH ST E & AVE I MKD (SEC COR 12,7,13,18,T7N,R8W,R9W,1927)	L 2409
LANCASTER (EAST) (2004)	2,987.853 910.700	CS MON 150MM UP @ SW COR 200TH ST E & AVE I 12M W & 12M S/O C/L INT MKD (RPC 1 RE 5869) MKR POST 2.5M SW/O MON	L 2410
LANCASTER (EAST) (2004)	2,967.507 904.499	CS MON 275MM DN @ C/L INT AVE J & 190TH ST E MKD (SEC COR 14,13,23,24,R9W,T7N)	L 2419
LANCASTER (EAST) (2004)	2,967.824 904.595	50MM IP W/CONC PLUG & CS TAG 150MM UP @ NW COR AVE J & 190TH ST E 15M W & 15M N/O C/L INT	L 2420
LANCASTER (EAST) (2004)	2,890.115 880.910	50MM IP W/CONC PLUG & NAIL 75MM DN @ NE COR 185TH ST E & AVE J 12M N & 15M E/O C/L INT	L 2421
LANCASTER (EAST) (2004)	2,886.751 879.884	50MM IP W/CONC PLUG & NAIL 150MM UP @ SW COR 185TH ST E & AVE J 12M S & 12M W/O C/L INT MKR POST 300MM S/O MON	L 2423
LANCASTER (EAST) (2004)	2,764.678 842.676	CS MON IN WELL 300MM DN @ C/L INT 180TH ST E & AVE J MKD (SEC COR 15,14,22,23,R9W,T7N)	L 2424
LANCASTER (EAST) (2004)	2,760.706 841.466	50MM IP W/CONC PLUG & NAIL FLUSH @ SW COR AVE J & 180TH ST E 12M S & 12M W/O C/L INT	L 2425
LANCASTER (EAST) (2004)	2,744.389 836.492	50MM IP W/CONC PLUG & NAIL 300MM UP @ SE COR 175TH ST E & AVE J 12M E & 12M S/O C/L INT	L 2426
LANCASTER (EAST) (2004)	2,742.273 835.847	CS MON IN WELL 360MM DN @ C/L INT 175TH ST E & AVE J MKD (1/4 COR 15,22,T7N,R9W)	L 2427
LANCASTER (EAST) (2004)	2,680.477 817.012	CS MON IN WELL 640MM DN @ C/L INT 170TH ST E & AVE J MKD (15,16,21,22,R9W,T7N)	L 2429
LANCASTER (EAST) (2004)	2,580.788 786.627	CS MON IN WELL 290MM DN @ C/L INT 165TH ST E & AVE J MKD (1/4 COR 16,21,R9W,T7N)	L 2431
LANCASTER (EAST) (2004)	2,514.707 766.485	CS MON IN WELL 150MM DN @ C/L INT PROP 160TH ST E & AVE J MKD (SEC COR 16,17,20,21,R9W,T7N)	L 2432
LANCASTER (EAST) (2004)	2,514.856 766.530	SPK T&W IN 300MM CASING 100MM UP ON C/L PROD 160TH ST E FROM N & 12M S/O C/L AVE J MKR POST 600M N/O MON	L 2433
LANCASTER (EAST) (2004)	2,496.210 760.847	CS MON IN WELL 265MM DN @ C/L INT AVE J & PROP 155TH ST E MKD (1/4 COR 17,20,T7N,R9W)	L 2434
BASELINE (1998)	2,555.802 779.010	CS MON IN WELL 450MM DN @ C/L INT 90TH ST E & AVE N MKD (5,6,7,8,T6N,R10W)	L 2608

QUAD YEAR	ELEV FOOT/METER	DESCRIPTION	BM NUMBER
BASELINE (1998)	2,591.274 789.822	CSBM MON FL @ NE COR 150TH ST E & FUT AVE M-8 23M N & 10.4M E/O C/L INT MKD (BM 115-10 1961) MKR POST 600MM E/O MON	L 2700
BASELINE (1998)	2,607.642 794.811	CSBM MON 150MM UP @ NE COR AVE N & 150TH ST E 20M N & 9M E/O C/L INT MKD (BM 115-9 1961) MKR POST 600MM E/O MON	L 2701
BASELINE (1998)	2,619.463 798.414	CSBM MON 150MM UP @ NW COR 150TH ST E & FUT AVE N-8 57M N & 10M W/O C/L INT MKD (BM 115-8 1961) MKR POST 600MM W/O MON	L 2702
BASELINE (1998)	2,651.143 808.070	CSBM MON 150MM UP @ SW COR AVE O & 145TH ST E 30.5M S & 11.3M W/O C/L INT MKD (BM 115-6 1961) MKR POST 600MM W/O MON	L 2704
LANCASTER (EAST) (2004)	2,948.534 898.716	CS MON 150MM UP ON C/L LANCASTER BLVD 30M W/O C/L 200TH ST E MKD (BM RPA-1 RE 5869) MKR POST 600MM NW/O MON	L 3171
LANCASTER (EAST) (2004)	2,923.583 891.111	CSBM MON 9M N C/L AVE J & 50M E/O C/L 200TH ST E MKD (BM 124-18 1966) MKR POST 300MM N/O MON (BENT OVER)	L 3172
LANCASTER (EAST) (2004)	2,925.915 891.822	40MM IP @ SW COR 200TH ST E & AVE J 15.5M S & 18.6M W/O C/L INT MKR POST 600MM N/O MON	L 3173
LANCASTER (EAST) (2004)	2,923.379 891.049	40MM IP 50MM UP @ NW COR AVE J & 195TH ST E 15M W & 14.6M N/O C/L INT	L 3175
BASELINE (1998)	2,681.317 817.267	CS MON 100MM DN @ C/L INT AVE M & 200TH ST E MKD (SEC COR 36,31,1,6,T7N,T6N,R9W,R8W)	L 3186
BASELINE (1998)	2,682.360 817.585	50MM IP W/CE TAG @ SW COR AVE M & 200TH ST E 14M S & 15.5M W/O C/L INT (S EDGE)	L 3187
BASELINE (1998)	2,668.751 813.437	40MM IP W/NAIL 100MM DN @ C/L INT AVE M & FUT 195TH ST E	L 3188
BASELINE (1998)	2,670.352 813.925	CHIS X ON N EDGE 40MM IP W/CE TAG 150MM UP ON C/L PROD FUT 195TH ST E 15M S/O C/L AVE M	L 3189
BASELINE (1998)	2,653.440 808.770	CS MON 150MM DN @ C/L INT FUT AVE M & 190TH ST E MKD (SEC COR 35,36,2,1,T6N,T7N,R9W)	L 3190
BASELINE (1998)	2,654.421 809.069	CHIS X ON W EDGE 50MM IP W/CE TAG 150MM UP @ NW COR FUT AVE M & 190TH ST E 15M N & 15M W/O C/L INT	L 3191
BASELINE (1998)	2,628.246 801.091	50MM IP W/NAIL 150MM DN @ C/L INT FUT AVE M & FUT 185TH ST E	L 3192
BASELINE (1998)	2,631.806 802.176	CHIS X ON S EDGE 50MM IP W/CE TAG 100MM UP ON C/L PROD FUT 185TH ST E 15M S/O C/L FUT AVE M	L 3193
BASELINE (1998)	2,596.888 791.533	50MM IP W/CE TAG 150MM UP ON C/L FUT 175TH ST E & 15M S/O C/L AVE M	L 3195
LANCASTER (EAST) (2004)	2,548.974 776.930	RDBM MON IN WELL @ NE COR AVE M & 105TH ST E 6M N & 21M E/O C/L INT 2.7M E/O PP #390101E MKD (1968) MKR POST 600MM N/O MON	L 3338
BASELINE (1998)	2,588.666 789.027	50MM IP W/CS TAG @ SE COR AVE M & 170TH ST E 15M S & 15M E/O C/L INT MKR POST 600MM W/O MON	L 3342
BASELINE (1998)	2,457.489 749.044	CSBM MON 100MM UP @ SW COR 140TH ST E & FUT AVE F-8 33.5M S & 15M W/O C/L INT MKD (BM 106-109A RE 5869)	L 3343

QUAD YEAR	ELEV FOOT/METER	DESCRIPTION	BM NUMBER
LANCASTER (EAST) (2004)	2,975.191 906.841	40MM IP W/NAIL FLUSH @ SE COR 200TH ST E & AVE H-8 15M S & 15M E/O C/L INT	L 3344
LANCASTER (EAST) (2004)	2,382.250 726.112	CS MON IN WELL 300MM DN @ C/L INT 120TH ST E & AVE F MKD (27,26,34,35,T8N,R10W,RE 5869)	L 3346
LANCASTER (EAST) (2004)	2,419.769 737.548	L&BN IN SE COR CONC APRON @ E EDGE CONC SLAB 53M N & 31M W/O C/L INT 110TH ST E & AVE H-8	L 3347
LANCASTER (EAST) (2004)	2,434.645 742.082	CS MON IN WELL 200MM DN @ C/L INT 110TH ST E & AVE I MKD(1/4 COR 9,10,15,16,R10W,T7N,1926)	L 3350
LANCASTER (EAST) (2004)	2,444.158 744.982	40MM IP W/BRAD 600MM DN 15M N & 15M W/O C/L INT 110TH ST E & AVE 1-8 MKR POST 300MM N/O MON	L 3351
LANCASTER (EAST) (2004)	2,442.203 744.386	CS MON IN WELL 300MM DN @ C/L INT 110TH ST E & AVE I-8 MKD (1/4 COR 15,16,T7N,R10W,1926)	L 3352
LANCASTER (EAST) (2004)	2,470.797 753.101	RDBM MON IN WELL @ 12M S/O C/L FUT AVE J-8 & 6M E/O C/L 110TH ST E 6.7M S/O PP (#192429E) MKD (1968) MKR POST 600MM E/O MON	L 3353
LANCASTER (EAST) (2004)	2,580.595 786.568	RDBM MON IN WELL 5M W/O PP #BF 90467-15 20M N/O C/L AVE L & 10M W/O C/L 170TH ST E MKR POST 600MM N/O MON	L 3359
LANCASTER (EAST) (2004)	2,589.778 789.367	CS MON IN WELL 540MM DN @ C/L INT 170TH ST E & AVE K MKD (SEC COR 21,22,27,28,T7N,R9W)	L 3360
LANCASTER (EAST) (2004)	2,591.482 789.886	RDBM MON IN WELL @ NW COR 170TH ST E & AVE K 10.4M W & 14.3M N/O C/L INT 3M SW/O PP #1061693E MKR POST 600MM W/O MON	L 3361
LANCASTER (EAST) (2004)	2,627.033 800.722	CS MON IN WELL 200MM DN @ C/L INT 170TH ST E & FUT AVE J-8 MKD (1/4 COR 21,22,T7N,R9W)	L 3362
LANCASTER (EAST) (2004)	2,628.021 801.023	40MM IP FLUSH @ NE COR 170TH ST E & FUT AVE J-8 15M N & 15M E/O C/L INT	L 3363
BASELINE (1998)	2,701.953 823.557	40MM IP & W/NAIL 150MM DN @ C/L INT FUT AVE M & 205TH ST E	L 3393
BASELINE (1998)	2,703.157 823.924	50MM IP W/CE TAG 150MM UP ON C/L 205TH ST E & 15M S/O C/L FUT AVE M	L 3394
BASELINE (1998)	2,721.563 829.534	50MM IP W/CE TAG 200MM UP @ SW COR FUT AVE M & 210TH ST E 15M S & 15M W/O C/L INT	L 3395
BASELINE (1998)	2,720.198 829.118	CS MON 300MM DN @ C/L INT FUT AVE M & 210TH ST E MKD (SEC COR 31,32,6,5,T6N,T7N,R8W)	L 3396
BASELINE (1998)	2,735.145 833.674	50MM IP W/CE TAG 200MM UP @ SW COR FUT AVE M & 215TH ST E 15M S & 15M W/O C/L INT	L 3397
BASELINE (1998)	2,734.657 833.525	40MM IP W/NAIL 300MM DN @ C/L INT FUT AVE M & 215TH ST E	L 3398
BASELINE (1998)	2,757.865 840.599	50MM IP W/CE TAG 150MM UP @ NE COR FUT AVE M & 220TH ST E 15M N & 15M E/O C/L INT	L 3400
BASELINE (1998)	2,795.624 852.108	50MM IP W/CE TAG 200MM UP @ SW COR FUT AVE M & 230TH ST E 15M S & 15M W/O C/L INT	L 3403

QUAD YEAR	ELEV FOOT/METER	DESCRIPTION	BM NUMBER
BASELINE (1998)	2,794.732 851.836	CS MON 150MM DN @ C/L INT FUT AVE M & 230TH ST E MKD (SEC COR 33,34,3,4,T6N,T7N,R8W) MKR POST 300MM S/O MON	L 3404
BASELINE (1998)	2,832.012 863.199	50MM IP W/CE TAG 250MM UP @ SW COR FUT AVE M & 235TH ST E 15M S & 15M W/O C/L INT MKR POST 300MM S/O MON	L 3405
BASELINE (1998)	2,849.696 868.589	50MM IP W/CE TAG 150MM UP @ SW COR FUT AVE M & 240TH ST E 15M S & 15M W/O C/L INT MKR POST 300MM E/O MON	L 3407
BASELINE (1998)	2,848.584 868.250	CS MON IN WELL 300MM DN @ C/L INT FUT AVE M & 240TH ST E MKD (SEC COR 2,3,34,35,T6N,R8W)	L 3408
LANCASTER (EAST) (2004)	3,027.041 922.645	CS MON IN WELL 220MM DN @ C/L INT AVE G & 205TH E MKD (1/4 COR 31,6,T7N,T8N,R8W)	L 3409
LANCASTER (EAST) (2004)	3,027.550 922.800	50MM IP 100MM UP @ NE COR AVE G & 205TH ST E 15M N & 15M E/O C/L INT	L 3410
LANCASTER (EAST) (2004)	3,019.923 920.475	CSBM MON 100MM UP @ NW COR AVE G & 210TH ST E 13M N & 43M W/O C/L INT MKD (BM 124-30 1966)	L 3411
LANCASTER (EAST) (2004)	3,018.979 920.188	CS MON IN WELL 300MM DN @ C/L INT AVE G & 210TH ST E MKD (SEC COR 31,32,5,6,T7N,T8N,R8W)	L 3412
LANCASTER (EAST) (2004)	2,973.928 906.456	CSBM MON 75MM UP @ NW COR AVE G & 215TH ST E 17M N & 7.6M W/O C/L INT MKD (BM 124-31 1966) MKR POST 600MM S/O MON	L 3413
LANCASTER (EAST) (2004)	2,974.464 906.619	CS MON IN WELL 200MM DN @ C/L INT AVE G & 215TH ST E MKD (1/4 COR 32,5,T7N,T8N,R8W)	L 3414
LANCASTER (EAST) (2004)	2,988.867 911.009	CSBM MON FLUSH @ NW COR AVE G & 220TH ST E 10.7M N & 42M W/O C/L INT MKD (BM 124-32 1966) MKR POST 900MM S/O MON (BENT OVER)	L 3415
LANCASTER (EAST) (2004)	3,039.200 926.351	50MM IP W/CE TAG 300MM UP @ SW COR AVE G 235TH ST E 15M S & 15M W/O C/L INT	L 3419
LANCASTER (EAST) (2004)	3,067.673 935.030	50MM IP 100MM UP @ SW COR 240TH ST E & AVE G 15M S & 15M W/O C/L INT	L 3421
LANCASTER (EAST) (2004)	3,067.321 934.922	CS MON IN WELL 520MM DN @ C/L INT AVE G & 240TH ST E MKD (SEC COR 34,35,3,2,T7N,T8N,R8W)	L 3422
LANCASTER (EAST) (2004)	3,054.715 931.080	50MM IP W/CE TAG FLUSH 15M N/O C/L AVE G & 175M W/O DRWY TO HSE 24002 MKR POST 300MM N/O MON	L 3423
LANCASTER (EAST) (2004)	3,053.468 930.700	CSBM MON IN BOULDER 25M S C/L AVE G & 134M W/O C/L DRWY TO HSE 24002 MKD (BM 124-37 1966) 805M W/O 250TH ST E	L 3424
LANCASTER (EAST) (2004)	2,955.775 900.923	50MM IP W/CE TAG 250MM UP @ SW COR 250TH ST E & AVE G 15M S & 15M W/O C/L INT	L 3425
LANCASTER (EAST) (2004)	2,953.584 900.255	CS MON IN WELL 200MM DN @ C/L INT AVE G & 250TH ST E MKD (SEC COR 35,36,1,2,T7N,T8N,R8W)	L 3426
LANCASTER (EAST) (2004)	2,966.531 904.201	50MM IP W/CE TAG 250MM UP @ NW COR 250TH ST E & FUT AVE G-8 15M N & 15M W/O C/L INT MKR POST 450MM N/O MON	L 3427
LANCASTER (EAST) (2004)	2,964.280 903.515	CS MON IN WELL 350MM DN @ C/L INT 250TH ST E & FUT AVE G-8 MKD (1/4 COR 1,2,T7N,R8W)	L 3428

QUAD YEAR	ELEV FOOT/METER	DESCRIPTION	BM NUMBER
LANCASTER (EAST) (2004)	2,970.447 905.395	50MM IP W/CE TAG FLUSH @ NW COR 250TH ST E & FUT AVE H 15M N & 15M W/O C/L INT MKR POST 300MM N/O MON	L 3429
LANCASTER (EAST) (2004)	2,968.228 904.719	CS MON 300MM DN @ C/L INT 250TH ST E & AVE H MKD (12,11,1,2,T7N,R8W) MON 4.2M E/O FENCE COR POST	L 3430
LANCASTER (EAST) (2004)	2,991.824 911.911	CS MON 250MM DN @ C/L INT 250TH ST E & FUT AVE H-8 3M W & 2.4M S/O C/L INT DIRT RD TO THE WEST & 22.6M NE/O F HYD MKD (1/4 COR 11,12,T7N,R8W)	L 3431
LANCASTER (EAST) (2004)	3,048.519 929.191	CSBM MON IN ROCK OUTCROP NR TOP HILL 40M W/O C/L 250TH ST E & 1.45K S/O AVE H MKD (BM 124-42 1966) MKR POST 2M NE/O MON	L 3433
LANCASTER (EAST) (2004)	3,029.901 923.517	CS MON 250MM DN @ C/L INT FUT 250TH ST E & FUT AVE I MKD (SEC COR 11,12,13,14,T7N,R8W) MKR POST 600MM N/O MON 32M NE/O F HYD	L 3434
LANCASTER (EAST) (2004)	3,044.363 927.925	CSBM MON IN ROCK FACE 38M W/O C/L 250TH ST E (DIRT) & 98M N/O KILDARE ST (AVE I-4) MKD (BM 124-44 1966)	L 3436
LANCASTER (EAST) (2004)	3,040.571 926.769	40MM IP W/CE TAG FLUSH @ NE COR 250TH ST E & KILDARE ST (AVE I-4) 15M N & 15M E/O C/L INT MKR POST 300MM W/O MON	L 3437
LANCASTER (EAST) (2004)	3,027.479 922.778	CS MON 600MM DN @ C/L INT 250TH ST E & FUT AVE I-8 2.7M W C/L INT DIRT RDS MKD (1/4 COR 13,14, T7N,R8W) MKR POST 600MM NW/O MON	L 3438
LANCASTER (EAST) (2004)	2,983.801 909.465	50MM IP WITH CE TAG 200MM UP @ NE COR AVE J & 250TH ST E 15M N & 15M E/O C/L INT	L 3439
LANCASTER (EAST) (2004)	2,983.065 909.241	CSBM MON @ NW COR AVE J & 250TH ST E 11M N & 7.3M W/O C/L INT MKD (BM 124-46 1966) 75MM ST POST (MKD 250) 450MM N/O MON	L 3440
LANCASTER (EAST) (2004)	2,942.792 896.966	50MM IP 150MM UP @ NW COR 245TH ST & AVE J 15M N & 15M W/O C/L INT	L 3441
LANCASTER (EAST) (2004)	2,941.696 896.632	CSBM MON 100MM DN @ SW COR AVE J & 245TH ST E 10.4M S & 24M W/O C/L INT MKD (BM 124-47 1966) MKR POST 600MM S/O MON	L 3442
LANCASTER (EAST) (2004)	2,925.932 891.827	CS MON 620MM DN @ C/L INT AVE J & 240TH ST E MKD (SEC COR 15,14,22,23,T7N,R8W)	L 3444
LANCASTER (EAST) (2004)	2,837.636 864.914	CS MON IN WELL 850MM DN @ C/L INT 240TH ST E & FUT AVE L-8 MKD (1/4 COR 34,35,T7N,R8W)	L 3449
LANCASTER (EAST) (2004)	3,077.464 938.014	RDBM TAG IN CONC COLLAR OF FIRE HYD @ SW COR 200TH ST E & AVE F-8 15M S & 6M W/O C/L INT	L 3450
LANCASTER (EAST) (2004)	3,081.780 939.329	50MM IP WITH CE TAG 250MM UP @ NE COR 200TH ST E & AVE F-8 15M N & 15M E/O C/L INT	L 3451
LANCASTER (EAST) (2004)	3,047.541 928.893	50MM IP W/CE TAG 200MM UP @ SW COR AVE F & 200TH ST E 15M S & 15M W/O C/L INT	L 3452
LANCASTER (EAST) (2004)	3,047.054 928.745	CS MON 350MM DN @ C/L INT 200TH ST E & AVE F MKD (SEC COR 25,30,36,31,T8N,R8W,R9W)	L 3453
LANCASTER (EAST) (2004)	3,075.473 937.407	BN IN SW COR OF 100MM POST 50MM UP @ SW COR 200TH ST E & AVE E-8 9M S & 9M W/O C/L INT 1M W/O STREET SIGN	L 3455

QUAD YEAR	ELEV FOOT/METER	DESCRIPTION	BM NUMBER
LANCASTER (EAST) (2004)	3,094.347 943.160	CS MON 200MM DN @ C/L INT 200TH ST E & AVE E MKD (24,19,25,30,T8N,R9W,RE 22726,1982)	L 3456
LANCASTER (EAST) (2004)	3,096.460 943.804	BN IN NE COR 100MM POST 50MM UP @ NE COR 200TH ST E & AVE E 9M N & 9M E/O C/L INT	L 3457
LANCASTER (EAST) (2004)	3,062.074 933.323	CS MON IN WELL 200MM DN @ C/L INT 230TH ST E & AVE F MKD (SEC COR 28,27,33,34,R8W,T8N) MKR POST 1M NW/O MON	L 3487
LANCASTER (EAST) (2004)	3,062.755 933.531	50MM IP W/CE TAG 250MM UP @ SW COR 230TH ST E & AVE F 15M S & 15M W/O C/L INT	L 3488
LANCASTER (EAST) (2004)	3,040.753 926.824	50MM IP W/CE TAG 100MM UP @ NW COR 230TH ST E & AVE F-8 15M N & 15M W/O C/L INT	L 3489
LANCASTER (EAST) (2004)	3,072.027 936.357	CS MON 200MM DN @ C/L INT FUT AVE E & 205TH ST E 6M N/O C/L DIRT RD NR C/L PROD 205TH ST E MKD (COR 1/4 19,30,T8N,R8W,1931)	L 3491
LANCASTER (EAST) (2004)	3,059.073 932.408	CS MON 200MM DN @ C/L INT FUT AVE E & 210TH ST E 6M N & 11M E/O C/L INT DIRT RDS MKD (SEC COR 19,20,30,29,T8N,R8W,1931)	L 3493
LANCASTER (EAST) (2004)	3,059.616 932.574	BN IN NW COR 100MM WOOD POST 150MM UP ON C/L 215TH ST E & 6M N/O C/L AVE E	L 3496
LANCASTER (EAST) (2004)	3,036.441 925.510	CS MON 600MM DN @ C/L INT AVE E & 220TH ST E 8M S & 6.4M W/O C/L INT DIRT RDS MKD (SEC COR 20,21,28,29,T8N,R8W) MKR POST 600MM SW/O MON	L 3498
LANCASTER (EAST) (2004)	2,915.255 888.572	50MM IP W/CE TAG 200MM UP @ NW COR AVE J & 205TH ST E 15M N & 15M W/O C/L INT	L 3501
LANCASTER (EAST) (2004)	2,915.285 888.582	50MM IP W/CE TAG 200MM UP @ SE COR AVE J & 205TH ST E 15M S & 15M E/O C/L INT	L 3502
LANCASTER (EAST) (2004)	2,882.171 878.488	50MM IP W/CE TAG FLUSH @ NE COR AVE J & 210TH ST E 15M N & 15M E/O C/L INT	L 3504
LANCASTER (EAST) (2004)	2,851.763 869.220	50MM IP W/CE TAG 100MM UP @ NW COR AVE J & 215TH ST E 15M N & 15M W/O C/L INT	L 3505
LANCASTER (EAST) (2004)	2,851.253 869.065	50MM IP W/NAIL 75MM UP @ NE COR AVE J & 215TH ST E 15M N & 15M E/O C/L INT	L 3506
LANCASTER (EAST) (2004)	2,855.754 870.436	50MM IP 50MM UP @ NW COR AVE J & 220TH ST E 15M N & 15M W/O C/L INT	L 3507
LANCASTER (EAST) (2004)	2,856.126 870.550	50MM IP W/NAIL FLUSH @ SE COR AVE J & 220TH ST E 15M S & 15M E/O C/L INT	L 3508
LANCASTER (EAST) (2004)	2,896.104 882.735	50MM W/CE TAG 100MM UP @ NW COR AVE J & 225TH ST E 15M N & 15M W/O C/L INT	L 3509
LANCASTER (EAST) (2004)	2,898.628 883.504	50MM IP W/CE TAG FLUSH @ SE COR AVE J & 225TH ST E 15M S & 15M E/O C/L INT	L 3510
LANCASTER (EAST) (2004)	2,943.083 897.054	50MM IP W/CE TAG 50MM UP @ SW COR AVE J & 230TH ST E 15M S & 15M W/O C/L INT	L 3511

QUAD YEAR	ELEV FOOT/METER	DESCRIPTION	BM NUMBER
LANCASTER (EAST) (2004)	2,940.874 896.381	50MM IP W/CE TAG 300MM UP @ NE COR AVE J & 230TH ST E 15M N & 15M E/O C/L INT	L 3512
LANCASTER (EAST) (2004)	2,947.763 898.481	50MM IP W/CE TAG 50MM UP @ SW COR AVE J & 235TH ST E 15M S & 15M W/O C/L INT	L 3513
LANCASTER (EAST) (2004)	2,950.351 899.270	50MM IP W/CE TAG 50MM UP @ NE COR AVE J & 235TH ST E 15M N & 15M E/O C/L INT	L 3514
BASELINE (1998)	2,366.744 721.385	CSBM MON 75MM UP ON C/L 125TH ST E & 15M N/O C/L AVE E MKD (106-115A 1972 RE 7078) MKR POST 600MM S/O MON	L 3633
LANCASTER (EAST) (2004)	2,401.882 732.096	L&BN IN CB 9M N & 25M E/O C/L INT 120TH ST E & AVE G MKD (BM)	L 3634
BASELINE (1998)	2,374.241 723.670	40MM IP W/BRAD 200MM DN 18M N & 18M E/O C/L INT AVE E & 135TH ST E FENCE COR 4M SW/O IP	L 3665
BASELINE (1998)	2,359.648 719.222	L&BN IN SW COR CONC SLAB 45.5M N & 35.5M E/O C/L INT AVE E & 120TH ST E MKD (BM)	L 3667
BASELINE (1998)	2,363.676 720.450	50MM IP 100MM UP 13M N/O C/L AVE E & 100M W/O C/L 115TH ST E 6M W/O C/L DIRT RD TO HSE #11337 MKR POST 300MM E/O MON	L 3668
BASELINE (1998)	2,345.166 714.808	CS MON IN WELL 250MM DN @ C/L INT AVE E & 95TH ST EE MKD (1/4 COR 20,29,R10W,T8N,RE 5869)	L 3671
LANCASTER (EAST) (2004)	3,026.024 922.335	50MM IP W/CONC PLUG & NAIL 75MM UP 15M S & 15M W/O C/L INT AVE G & 230TH ST E	L 3672
LANCASTER (EAST) (2004)	3,011.862 918.018	50MM IP W/CE TAG 250MM UP 15M S & 15M E/O C/L INT AVE G & 225TH ST E	L 3673
LANCASTER (EAST) (2004)	3,012.568 918.233	50MM IP W/CE TAG 150MM UP 15M N & 15M W/O C/L INT AVE G & 225TH ST E	L 3674
LANCASTER (EAST) (2004)	2,405.121 733.083	L&BN IN SW COR CONC SLAB OF WATER VALVE 69M E/O C/L 105TH ST E & 49M N/O C/L AVE H MKD (BM)	L 3676
LANCASTER (EAST) (2004)	2,469.879 752.821	40MM IP W/CONC PLUG & BRAD 50MM DN 15M S & 15M E/O C/L INT AVE J & 130TH ST E MKR 300MM S/O MON	L 3680
LANCASTER (EAST) (2004)	2,449.637 746.652	50MM IP W/CS TAG 100MM UP 12M S & 12M E/O C/L INT AVE J & 95TH ST E MKR POST 300MM S/O MON	L 3681
BASELINE (1998)	2,428.433 740.188	RDBM MON IN WELL 12M N & 12M E/O C/L INT AVE E & 140TH ST E MKD (1972) FENCE COR 5M NE/O MON	L 3688
BASELINE (1998)	2,461.508 750.269	LACS MON IN WELL 600MM DN @ C/L INT AVE E-8 & 140TH ST E MKD (SEC 1/4 COR 25,30,R9W,T8N,R10W)	L 3689
LANCASTER (EAST) (2004)	2,452.890 747.643	50MM IP W/CONC PLUG & RE TAG #4750 7.6M N & 15M E/O C/L INT AVE H-8 & 140TH	L 3690
LANCASTER (EAST) (2004)	2,463.007 750.727	50MM IP W/CONC PLUG & .40 CAL SHELL CASE 15M N & 15M W/O C/L INT AVE I & 140TH ST E MKR POST 300MM N/O MON	L 3691
LANCASTER (EAST) (2004)	2,951.494 899.618	L&BN IN NE COR CONC BASE OF F HYD 11M S & 23M E/O C/L INT 200TH ST E & LANCASTER BLVD	L 3702

QUAD YEAR	ELEV FOOT/METER	DESCRIPTION	BM NUMBER
LANCASTER (EAST) (2004)	2,890.904 881.150	50MM IP W/CE TAG 150MM UP 15M S & 15M W/O C/L INT 240TH ST E & FUT AVE K MKR 300MM W/O MON	L 3707
LANCASTER (EAST) (2004)	2,928.068 892.478	RDBM MON IN WELL 200MM DN 13M S & 15M E/O C/L INT 240TH ST E & AVE J MKR POST 600MM S/O MON	L 3708
BASELINE (1998)	2,606.783 794.549	RDBM TAG IN ROCK & CONC HDWL 4.6M W/O C/L 180TH ST E (DIRT) & 30.5M S/O C/L AVE M (DIRT)	L 4136
BASELINE (1998)	2,772.567 845.080	50MM IP W/CONC PLUG & 45 CARTRIDGE 200MM UP 15M S & 15M E/O C/L INT AVE O & FUT 135TH ST E 11M NE/O PP #1786912E	L 4167
BASELINE (1998)	2,745.654 836.877	50MM IP W/CONC PLUG & CE TAG 100MM DN 15M S & 15M E/O C/L INT AVE O & FUT 125TH ST E	L 4170
BASELINE (1998)	27,499.620 8,381.901	50MM IP 200MM UP 15M N & 15M W/O C/L INT AVE O FUT 125TH ST E	L 4171
BASELINE (1998)	2,674.929 815.320	50MM IP W/CONC PLUG FLUSH 15M N & 15M E/O C/L INT AVE O & 120TH ST E MKR 300MM N/O MON	L 4172
BASELINE (1998)	2,598.043 791.885	40MM IP W/CONC PLUG & BRAD FL 15M N & 15M E/O C/L INT AVE O & 105TH ST E CHIS X ON W EDGE MKR POST 300MM N/O MON	L 4176
BASELINE (1998)	2,599.575 792.352	40MM IP W/CONC PLUG & BRAD FL 15M S & 15M W/O C/L INT AVE O & 105TH ST E 13M E/O PP #2287760E	L 4177
BASELINE (1998)	2,590.585 789.612	50MM IP W/CONC PLUG & BRAD 12M N & 12M W/O C/L INT AVE O & 100TH ST E 6.4M W/O PP #2145389E	L 4179
LANCASTER (EAST) (2004)	2,527.155 770.279	RDBM MON IN WELL 101M N & 11M E/O C/L INT 90TH ST E & AVE M MKD (1974) MKR POST 600MM E/O MON	L 4479
LANCASTER (EAST) (2004)	2,583.801 787.545	L&BM TAG IN CONC SLAB OF FIRE HYD 23M E & 13.7M S/O C/L INT AVE J & 165TH ST E	L 4488
LANCASTER (EAST) (2004)	2,618.051 797.984	L&BM TAG IN CONC SLAB OF FIRE HYD 504M W/O 170TH ST E & 13.7M S/O C/L AVE J	L 4489
LANCASTER (EAST) (2004)	2,683.111 817.815	50MM IP W/CONC PLUG & NAIL 3M NW/O PP #1721253E 12M N & 12M W/O C/L INT AVE J & 170TH ST E	L 4490
BASELINE (1998)	2,350.182 716.337	CS MON FL 14M N & 14M W/O C/L INT AVE E & 100TH ST E MKD (REDMEN SCHOOL G 14 RM 2 1972) MKR POST 600MM S/O MON	L 4491
BASELINE (1998)	2,354.109 717.534	CS MON IN WELL 250MM DN @ C/L INT AVE E & 105TH ST E MKD (21,28,R10W,T8N,RE 5869)	L 4492
BASELINE (1998)	2,354.329 717.601	RDBM MON IN WELL 10.4M S & 36M E/O C/L INT AVE E & 105TH ST E MKD (1974) MKR 600MM S/O MON	L 4493
BASELINE (1998)	2,367.344 721.568	50MM IP W/CS TAG 100MM UP 15M N & 15M E/O C/L INT AVE E & 125TH ST E MKR POST 300MM N/O MON	L 4494
LANCASTER (EAST) (2004)	2,409.731 734.488	RDBM MON IN WELL 20M N & 13M E/O C/L INT 120TH ST E & AVE G-8 MKD (1974) MKR POST 600MM E/O MON	L 4496
LANCASTER (EAST) (2004)	2,400.755 731.752	RDBM MON IN WELL 13.4M S & 17.7M W/O C/L INT 120TH ST E & AVE G MKD (1974) MKR 600MM W/O MON	L 4497

QUAD YEAR	ELEV FOOT/METER	DESCRIPTION	BM NUMBER
LANCASTER (EAST) (2004)	2,487.674 758.245	CS MON 450MM DN 13.4M S & 13.7M W/O C/L INT 110TH ST E & AVE K MKD (ALPINE BUTTE 1972 RM 1) MKR POST 300MM N/O MON	L 4501
BASELINE (1998)	2,457.466 749.037	40MM IP W/PLUG & BRAD 75MM UP @ SE COR AVE G & 140TH ST E 15M E & 15M S/O C/L INT MKR POST 300MM W/O MON	L 4506
BASELINE (1998)	2,562.554 781.068	RDBM TAG IN NW COR OF CONC VAULT 402M W/O C/L 150TH ST E & 9M S/O C/L AVE G	L 4507
BASELINE (1998)	2,672.708 814.643	CS MON IN WELL 200MM DN @ C/L INT AVE G & 155TH ST E MKD (1/4 COR 32,5,T7N,T8N,R9W,RE 5869)	L 4508
BASELINE (1998)	2,746.487 837.131	50MM IP W/CS TAG 75MM UP 15M S & 15M W/O C/L INT AVE G & 160TH ST E MKR POST 300MM S/O MON	L 4509
LANCASTER (EAST) (2004)	2,452.976 747.669	RDBM MON IN WELL 52M E/O C/L 100TH ST E & 10M N/O C/L AVE J 3.4M NW/O PP #CAB43 MKD (1977)	L 4574
BASELINE (1998)	2,370.592 722.558	CS MON IN WELL 200MM DN @ C/L INT AVE E & 130TH E MKD (CO ENGR 23,24,25,26,T8N,R10W,RE 7078)	L 4765
BASELINE (1998)	2,357.558 718.585	CS MON IN WELL 350MM DN @ C/L INT AVE E & 110TH ST E MKD (21,22,27,28,T8N,R10W,RE 5869)	L 4766
LANCASTER (EAST) (2004)	2,517.229 767.254	CS MON IN WELL 600MM DN @ C/L INT 150TH ST E & AVE K MKD (19,20,30,29,R9W,T7N,1927)	L 4768
LANCASTER (EAST) (2004)	2,924.124 891.276	50MM IP 250MM UP @ SW COR AVE J & 195TH ST E 12M S & 12M W/O C/L INT	L 4772
LANCASTER (EAST) (2004)	3,041.250 926.976	50MM IP W/CE TAG 200MMM UP @ SE COR 230TH ST E AVE F-8 15M S & 15M E/O C/L INT	L 4793
LANCASTER (EAST) (2004)	2,901.927 884.510	CSBM MON 18M N C/L FUT J-8 & 18M W/O C/L 240TH ST E MKD (BM 124-49A 1972 RE 7078) MKR POST 600MM E/O MON	L 4797
LANCASTER (EAST) (2004)	2,902.287 884.620	CS MON IN WELL 320MM DN @ C/L INT 240TH ST E & FUT AVE J-8 MKD (1/4 COR 22,23,T7N,R8W,RE 7078)	L 4798
LANCASTER (EAST) (2004)	2,888.642 880.461	CSBM MON 18M N/O C/L FUT AVE K & 20M E/O C/L 240TH ST E MKD (BM 124-50A 1972 RE 7078) MKR POST 600MM W/O MON	L 4799
LANCASTER (EAST) (2004)	2,844.245 866.928	CS MON IN WELL 340MM DN @ C/L INT 240TH ST E & FUT AVE L MKD (26,27,34,35,T7N,R8W,RE 7078)	L 4800
LANCASTER (EAST) (2004)	2,845.901 867.433	CSBM MON 20M S/O C/L FUT AVE L & 18M W/O C/L 240TH ST E MKD (BM 124-52A 1972 RE 7078) MKR POST 600MM E/O MON	L 4801
LANCASTER (EAST) (2004)	2,838.788 865.265	CSBM MON 17.7M N/O C/L FUT AVE L-8 & 20M W/O C/L 240TH ST E MKD (124-53A 1972 RE 7078) MKR POST 600MM E/O MON	L 4802
BASELINE (1998)	2,567.229 782.493	50MM IP WITH CE TAG 300MM UP @ SE COR 90TH ST E & AVE N-8 14M E/O C/L & 16.3M SE/O PP #205073E MKR POST 600MM S/O MON	L 5184
BASELINE (1998)	2,557.692 779.586	50MM IP WITH DPW BM TAG FLUSH @ NE COR 90TH ST E & AVE N 23M E & 9M N/O C/L INT MKR POST 600MM E/O MON	L 5185
BASELINE (1998)	2,528.108 770.569	50MM IP WITH DPW BM TAG FLUSH @ NW COR 90TH ST E & AVE M 17M W & 9.4M N/O C/L INT MKR POST 600MM E/O MON	L 5186

QUAD YEAR	ELEV FOOT/METER	DESCRIPTION	BM NUMBER
BASELINE (1998)	2,577.669 785.675	CS MON IN WELL 500MM DN @ C/L INT 90TH ST E & AVE O	L 5528
BASELINE (1998)	2,342.948 714.132	DPW BM TAG IN W SIDE CONC BASE OF SIGN POST @ NE COR AVE E & 90TH ST E 11M E & 16M N/O C/L INT	L 5669
LANCASTER (EAST) (2004)	2,502.514 762.769	50MM IP W/CONC PLUG & DPW BM TAG FL 1.5M E/O PP #4244909E @ SE COR 90TH ST E & AVE L 13M S & 10M E/O C/L INT	L 5670
LANCASTER (EAST) (2004)	2,477.327 755.092	50MM IP W/CONC PLUG & DPW BM TAG FL @ NW COR 5.3M S/O PP #771375 7.3M N & 10M E/O C/L INT 90TH ST E & AVE K	L 5671
BASELINE (1998)	2,457.941 749.182	50MM IP W/CONC PLUG & DPW BM TAG FL 1.5M E/O PP #771385 67M N & 11M E/O C/L INT 90TH ST E & AVE J-8	L 5672
LANCASTER (EAST) (2004)	2,395.587 730.177	DPW BM TAG IN NELY COR OF CONC GTE CALL BOX PAD @ SW COR 90TH ST E & AVE H 33.5M S & 8.6M W/O C/L INT	L 5673
LANCASTER (EAST) (2004)	2,394.059 729.711	DPW BM TAG IN SE COR CONC BASE FOR WATER TANK MOTOR @ NW COR 90TH ST E & AVE H 40M N & 11.6M W/O C/L INT	L 5674
BASELINE (1998)	2,776.084 846.152	50MM IP W/DPW BM TAG 75MM UP 9M N/O C/L AVE M (DIRT RD) NR 225TH ST E MKR POST 600MM N/O MON	L 5848
BASELINE (1998)	2,758.272 840.723	CS MON 100MM UP @ NE COR AVE M & 220TH ST E 4.3M N & 12M E/O C/L INT MKD (ADOBE MTN B 13 RM 1 1972 RE 7078) MKR POST 600MM NW/O MON	L 5849
BASELINE (1998)	2,757.189 840.393	CS MON FLUSH @ NW COR AVE M & 220TH ST E 8.5M W & 14.3M N/O C/L INT MKD (ADOBE MTN B 13 RM 2 1972 RE 7078) MKR POST 600MM SW/O MON	L 5850
BASELINE (1998)	2,609.138 795.267	50MM IP W/CE TAG @ NE COR AVE M & 180TH ST E 14M E & 7M N/O C/L INT	L 5851
BASELINE (1998)	2,597.052 791.583	50MM IP W/CS TAG 250MM UP 15M N/O C/L AVE M ON C/L 175TH ST E MKR POST 1.5M S/O MON	L 5852
BASELINE (1998)	2,617.846 797.921	DPW BM TAG IN NE COR CONC EDISON VAULT 28M E & 9.4M S/O C/L INT 150TH ST E & AVE N-8	L 5855
BASELINE (1998)	2,650.100 807.752	50MM IP W/CONC PLUG & DPW BM TAG 1.5M E/O PP (NO#) @ NE COR 150TH ST E & AVE O 10M E & 16.5M N/O C/L INT	L 5856
BASELINE (1998)	2,647.882 807.076	MON IN WELL 700MM DN @ C/L INT AVE O & 145TH ST E	L 5857
BASELINE (1998)	2,678.672 816.461	50MM IP W/CONC PLUG & 45 SHELL CASING 150MM UP @ NW COR AVE O & 140TH ST E 12.5M N & 12.5M W/O C/L INT 5M NW/O PP (NO#)	L 5858
BASELINE (1998)	2,775.739 846.047	40MM IP W/CONC PLUG & NAIL 300MM DN @ NW COR AVE O & LONGVIEW RD 18M N & 18M W/O C/L INT MKR POST 600MM N/O MON	L 5859
BASELINE (1998)	2,777.685 846.640	50MM IP W/CONC PLUG & DPW BM TAG 1M E PP (NO#) @ NE COR AVE O & 130TH ST E 13M N & 13.5M E/O C/L INT	L 5860
BASELINE (1998)	2,618.505 798.122	50MM IP W/CONC PLUG & DPW BM TAG 1M E/O WLY MOST PP STUB 4.5M W C/L 115TH ST E & 23M N/O C/L AVE O	L 5861

QUAD YEAR	ELEV FOOT/METER	DESCRIPTION	BM NUMBER
BASELINE (1998)	2,607.944 794.903	50MM IP W/CONC PLUG & DPW BM TAG 1.5M E/O PP #1062411E @ NE COR AVE O & 110TH ST E 9.4M E & 9.8M N/O C/L INT	L 5862
BASELINE (1998)	2,608.915 795.199	DPW BM TAG IN S SIDE CONC BASE OF WATER DIST MH @ SW COR AVE O & 110TH ST E 7M W & 25M S/O C/L INT	L 5863
BASELINE (1998)	2,590.533 789.596	50MM IP W/CONC PLUG & DPW BM TAG 1M E/O PP #2145388E @ SW COR AVE O & 100TH ST E 7M S & 5M W/O C/L INT	L 5864
BASELINE (1998)	2,585.425 788.039	50MM IP W/CONC PLUG & DPW BM TAG @ NW COR AVE O & 95TH ST E 15M N & 15M W/O C/L INT	L 5865
LANCASTER (EAST) (2004)	2,982.919 909.196	CSBM MON 100MM UP @ SW COR AVE J & 250TH ST E 21.4M S & 15.6M W/O C/L INT 7M S/O PP #1897663E MKD (BM 124-46A 1972) MKR POST 760MM N/O MON	L 5922
LANCASTER (EAST) (2004)	2,994.375 912.688	50MM IP W/CS TAG 100MM UP @ SW COR 250TH ST E & AVE H-8 19M W & 17M S/O C/L INT 5M W/O W SIDE CONC WATER VALVE VAULT	L 5923
LANCASTER (EAST) (2004)	3,069.943 935.721	CSBM MON 100MM UP @ SE COR AVE G & 240TH ST E 18M E & 19.6M S/O C/L INT MKD (BM 124-36A 1972)	L 5924
LANCASTER (EAST) (2004)	3,040.580 926.772	50MM IP W/CE TAG 300MM UP @ NE COR AVE G & 235TH ST E 16M N & 15M E/O C/L INT	L 5925
LANCASTER (EAST) (2004)	3,026.458 922.467	CSBM MON 100MM UP @ SE COR AVE G & 230TH ST E 20M S & 16.6M E/O C/L INT MKD (124-34A 1972)	L 5926
LANCASTER (EAST) (2004)	3,075.133 937.303	50MM IP W/DPW BM TAG 8M W/O C/L 230TH ST E & 805M S/O AVE E @ FUTURE AVE E-8 MKR POST 300MM W/O MON	L 5927
LANCASTER (EAST) (2004)	3,018.451 920.027	50MM IP W/DPW BM TAG ON C/L PROD 230TH ST E 11M N/O END AC PAV AVE E & 12M W/O C/L 230TH ST FR THE NORTH MKR POST 300MM N/O MON	L 5928
LANCASTER (EAST) (2004)	3,074.582 937.135	50MM IP W/DPW BM TAG 600MM S/O PP (PARTIAL #_693033E) @ NE COR 200TH ST E & AVE E-8 27M N & 10.6M E C/L INT	L 5935
BASELINE (1998)	3,049.626 929.528	CO SURV CONTROL SYS REF MARK MON 50MM UP @ NW COR 200TH ST E & AVE G 11M N & 10.6M W/O C/L INT MKD (HI VISTA M2 RM 2 1972 RE 7078)	L 5936
LANCASTER (EAST) (2004)	3,011.120 917.792	CSBM MON @ SE COR AVE G & 225TH ST E 18.6M S & 17M E/O C/L INT MKD (BM 124-33A 1972 RE 7078) MKR POST 600MM N/O MON	L 5937
LANCASTER (EAST) (2004)	2,984.711 909.743	50MM IP W/CONC PLUG & NAIL 200MM DN @ NE COR AVE G & 220TH ST E 15M N & 15M E/O C/L INT	L 5938
BASELINE (1998)	3,053.344 930.661	50MM IP W/CONC PLUG & CE TAG 75MM UP @ NE COR AVE G & 180TH ST E 15M N & 15M E/O C/L INT	L 5939
BASELINE (1998)	2,933.337 894.083	CS BRASS MON FLUSH @ SE COR AVE G & 170TH ST E 14M S & 9M E/O C/L INT MKD (HI VISTA F 2 RM 2 1972 RE 7078) MKR POST 1.5M N/O MON	L 5940
BASELINE (1998)	2,602.488 793.240	DPW BM TAG IN NW COR CONC F HYD PAD @ SE COR AVE G & 150TH ST E 10M S & 24M E/O C/L INT	L 5941

QUAD YEAR	ELEV FOOT/METER	DESCRIPTION	BM NUMBER
LANCASTER (EAST) (2004)	3,059.092 932.414	50MM IP W/DPW BM TAG @ SW COR AVE E & 225TH ST E 11.6M S & 3M W/O C/L DIRT RD INT MKR POST 300MM S/O MON	L 5942
LANCASTER (EAST) (2004)	3,062.411 933.426	50MM IP W/DPW BM TAG 150MM UP @ SW COR AVE E & 210TH ST E 8.5M S & 8M W/O C/L DIRT RD INT	L 5943
LANCASTER (EAST) (2004)	3,073.683 936.861	50MM IP W/DPW BM TAG 100MM UP ON C/L PROD 205TH ST E & 14M N/O C/L AVE E (DIRT) 1M S/O 100MM WOOD POST	L 5944
BASELINE (1998)	2,460.628 750.001	CS MON 100MM UP 14M N & 14M W/O C/L INT 140TH ST E & AVE E-8 MKD (015 RM2 1972 RE 7078) MKR POST 600MM E/O MON	L 5945
BASELINE (1998)	2,363.548 720.411	DPW BM TAG IN W CB OF ISLE 2M N/O BCR 6M N/O C/L AVE E & 4.6M W/O C/L 120TH ST E	L 5946
LANCASTER (EAST) (2004)	2,398.060 730.931	DPW BM TAG ON SW COR CONC STAND PIPE @ NW COR AVE H & 95TH ST E 34M W & 23.5M N/O C/L INT	L 5948
LANCASTER (EAST) (2004)	2,404.146 732.786	50MM IP W/CONC PLUG & DPW BM TAG FL 2M S/O PP (#K9435Y) @ SW COR AVE H & FUT 105TH ST E 9M S & 1.5M W/O C/L INT MKR POST 600MM S/O MON	L 5949
LANCASTER (EAST) (2004)	2,449.772 746.693	L&BRAD IN CONC IN WELL @ C/L INT AVE J & 100TH ST E	L 5952
LANCASTER (EAST) (2004)	2,492.741 759.790	DPW BM TAG IN NE COR CONC PIPE COLLAR @ SE COR AVE J & 150TH ST E 10M E & 6M S/O C/L INT	L 5955
LANCASTER (EAST) (2004)	2,879.695 877.734	MON IN WELL 600MM DN @ C/L INT AVE J & 210TH ST E	L 5956
LANCASTER (EAST) (2004)	2,392.571 729.258	25MM IP W/CONC PLUG & BRAD 300MM DN 15M S & 13.4M W/O C/L INT 120TH ST E & AVE F-8	L 5957
LANCASTER (EAST) (2004)	2,488.125 758.383	CS BRASS MON NR MCR AC CURB @ NW COR 110TH ST E & AVE K 9.4M N & 10M W/O C/L INT MKD (ALPINE BUTTE RM 2 1972) MKR POST 450MM NW/O MON	L 5962
LANCASTER (EAST) (2004)	2,554.224 778.530	50MM IP W/CONC PLUG & DPW BM TAG 450MM E/O PP (NO#1185433E) 31M W & 8.5M N C/L INT AVE M & 110TH ST E	L 5964
LANCASTER (EAST) (2004)	2,553.416 778.284	50MM IP W/CONC PLUG & DPW BM TAG 450MM E/O PP #335237E 71M W & 8.5M N/O C/L INT AVE M & 110TH ST E	L 5965
LANCASTER (EAST) (2004)	2,520.198 768.159	CAL-TRANS MON 150MM UP @ NE COR 150TH ST E & AVE K 28M E & 13.5M N/O C/L INT MKD (SON A 1983)	L 5966
LANCASTER (EAST) (2004)	2,505.667 763.730	DPW BM TAG IN NW COR CONC SLAB @ NW COR 150TH ST E & FUT AVE J-8 82.5M W/O & 14M N/O C/L INT 14M N/O STAND PIPE	L 5968
LANCASTER (EAST) (2004)	2,410.679 734.777	50MM IP W/NAIL FLUSH 12M N & 14M E/O C/L INT 120TH ST E & AVE G-8 MKR POST 600MM E/O MON	L 5969
LANCASTER (EAST) (2004)	2,862.176 872.394	60MM IP CONC PLUG & CS TAG 150MM UP @ SE COR 240TH ST E & AVE K-8 15M S/O & 15.7M E/O C/L INT MRK POST 600MM E/O MON USE CHIS MRK ON S SIDE OF PIPE	L 6319

QUAD YEAR	ELEV FOOT/METER	DESCRIPTION	BM NUMBER
LANCASTER (EAST) (2004)	2,940.907 896.391	LA CO ENG BM MON UP 50MM MRKD (BM 124-47A 1972 RE7078) 16.8M S/O C/L AVE J & 63M W/O 245TH ST E 2.3M S/O PP(#1897656E) MRK POST 600MM N/O MON	L 6320
LANCASTER (EAST) (2004)	3,058.239 932.154	LA CO DPW WASH & BN ON 100MM WOOD POST UP 150MM 12M S/O C/L AVE E & ON C/L 215TH ST E	L 6321
LANCASTER (EAST) (2004)	2,506.633 764.024	50MM IP W/CONC PLUG SPK & DPW WASH FLUSH 500MM S/O PP#951510E 2.1M S/O FUT. AVE J-8 & 5M E/O C/L 150TH ST E (4.5M N/O C/L DIRT RD)	L 6322
LANCASTER (EAST) (2004)	2,417.403 736.827	50 MM IP W/CONC PLUG & DPW W & SPK FL 51M W/O C/L 115TH ST E & 7.8M S/O AVE H 1M W/O PP#1200436E	L 6323
LANCASTER (EAST) (2004)	2,417.114 736.739	50MM IP W/CONC PLUG & DPW BM TAG UP 150MM @ SE COR 115TH ST E & AVE H 8.2M S & 20.8M E/O C/L INT 600MM S/O PP#1586872E	L 6324
LANCASTER (EAST) (2004)	2,444.435 745.066	L & T IN CONC FOOTING FENCE POST 11.6M N & 15.2M E OF C/L INT AVE J & 90TH ST E	L 6350
LANCASTER (EAST) (2004)	2,456.781 748.829	L & DPW TAG IN NE COR CONC SLAB @ SW COR AVE J & 110TH ST E 25M W/O & 27M S/O C/L INT 600MM S/O PP STUB	L 6351
LANCASTER (EAST) (2004)	2,421.626 738.114	50MM IP W/CONC PLUG & DPW BM TAG FLUSH 750MM W/O PP #1937870E 4M N & 20M E/O C/L INT 110TH ST E & AVE H-8	L 6352
LANCASTER (EAST) (2004)	2,376.269 724.289	50MM IP CONC PLUG DPW TAG 10M N & 101M E/O C/L INT 120TH ST E & AVE E-8	L 6353