

LOS ANGELES COUNTY
DEPARTMENT OF PUBLIC WORKS
BENCH MARK LIST



OTTERBEIN QUAD

2005 ADJUSTMENT

**NAVD 88 DATUM
METRIC**

PREFACE

The Department of Public Works level net is composed of more than 1,700 miles or 2720 kilometers of levels supporting in excess of 9,000 bench marks. Previously when a major readjustment of the net was undertaken, to emphasize the complete break with previous elevations, the CY, CG, & CL, series bench marks were re-labeled DY, DG, & DL, respectively. Beginning in 1993 the baseline readjustment year will be indicated on baseline BM, s only indicated below (*). Henceforth all BM numbers will be labeled as a Y, G, or L, series that will no longer indicate the major adjustment year.

To facilitate the adjustment, indexing and distribution of adjusted values of the net, the county territory was divided into 33 quads or areas. For the identification purposes each quad was given a name, viz., "Rosemead," "La Mirada," "Santa Fe," etc. When bench marks and elevations in these quads are used, the name must be included in the bench mark description, e.g.,

* BASELINE 90.057 L&BR IN CTR OF CB RET @ NE COR Y 9191
(1990) 295.461 LA HABRA BLVD & VALLEY HOME AVE
10.7M N & 10.7M E/O C/L INT

It is expected that this general adjustment will for the most part remain sound for 8 to 12 years. Updating constrained adjustments will continue in the future. When a quad is readjusted, new elevations will be published and the date of readjustment will be noted in the bench mark description. Two bench marks with different adjustment dates will not normally agree with each other.

The basic accuracy of the net is reflected by an indicated field probable error of plus or minus 4mm per kilometer of leveling as determined from the conditions of closure. However, many years of experience in vertical control in the greater Los Angeles basin and Antelope Valley indicate that because of varying degrees of subsidence and heaving, the true datum is recovered only by obtaining substantial agreement of a number of bench marks.

The users of this net are invited to assist in its maintenance by notifying this department of cases of obliteration, apparent mistakes in description or elevations, and proven disturbance of bench marks.

DATUM: North American Vertical Datum of 1988 (NAVD88)

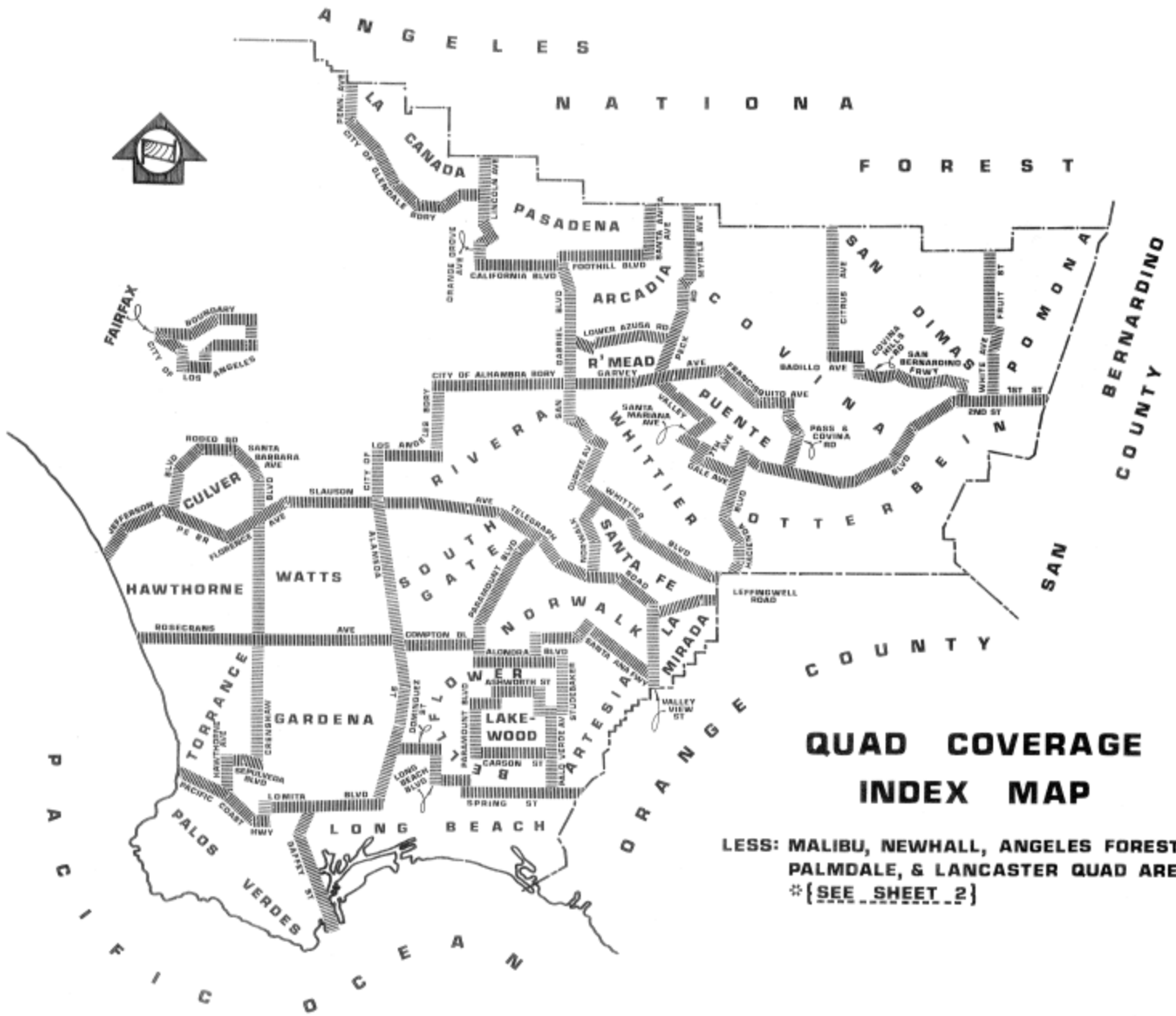
Note: NAVD 1988 minus approximately 700mm (2.3ft) equals
Previous NGVD 1929 Datums. For more accurate equations
At individual bench marks refer to previous publications

ABBREVIATIONS USED IN BENCH MARK LISTINGS

ABUT -----	Abutment	ECR -----	End of Curb
ALG -----	Along	EC -----	End of Curb
ANG PT -----	Angle Point	ENT -----	Entrance
B/W -----	Back of Walk	FL -----	Floor
BCR -----	Beginning of Curve Return	FTG -----	Footing
BLDG -----	Building	FRWY -----	Freeway
BM -----	Bench Mark	F/W -----	Front of Walk
BT SPK -----	Boat or Bolt Spike	GAR -----	Garage
BR CAP -----	Brass or Bronze Cap	HDWL -----	Headwall
C B -----	Catch Basin	HSE -----	House
CTR -----	Center	INT -----	Intersection
C/L -----	Center Line	IP -----	Iron Pipe
C/L INT -----	Center Line Intersection	LT -----	Left
C/L PROD ---	Center Line Produced	LACE -----	L.A. City Engineer
CONC -----	Concrete	LACS -----	L.A. Co. Engineer
COR -----	Corner	LAFC -----	L.A. Co. Flood Control
COE -----	Corps of Engineers	L&BN -----	Lead and Bench Nail
CULV -----	Culvert	L&BR -----	Lead and Brad
CYN -----	Canyon	L&N -----	Lead and Nail
CB -----	Curb	L&SPK -----	Lead and Spike
CS MON -----	Co. Eng. Monument	L&T -----	Lead and Tack
CT SPK -----	Cut Spike	MCR -----	Middle of Curb Return
DPW -----	Dept. of Public Works	MKD -----	Marked
DR -----	Drive or Driveway	MC -----	Middle of Curb
E/O -----	East of	MON -----	Monument

ABBREVIATIONS USED IN BENCH MARK LISTINGS (CON'T)

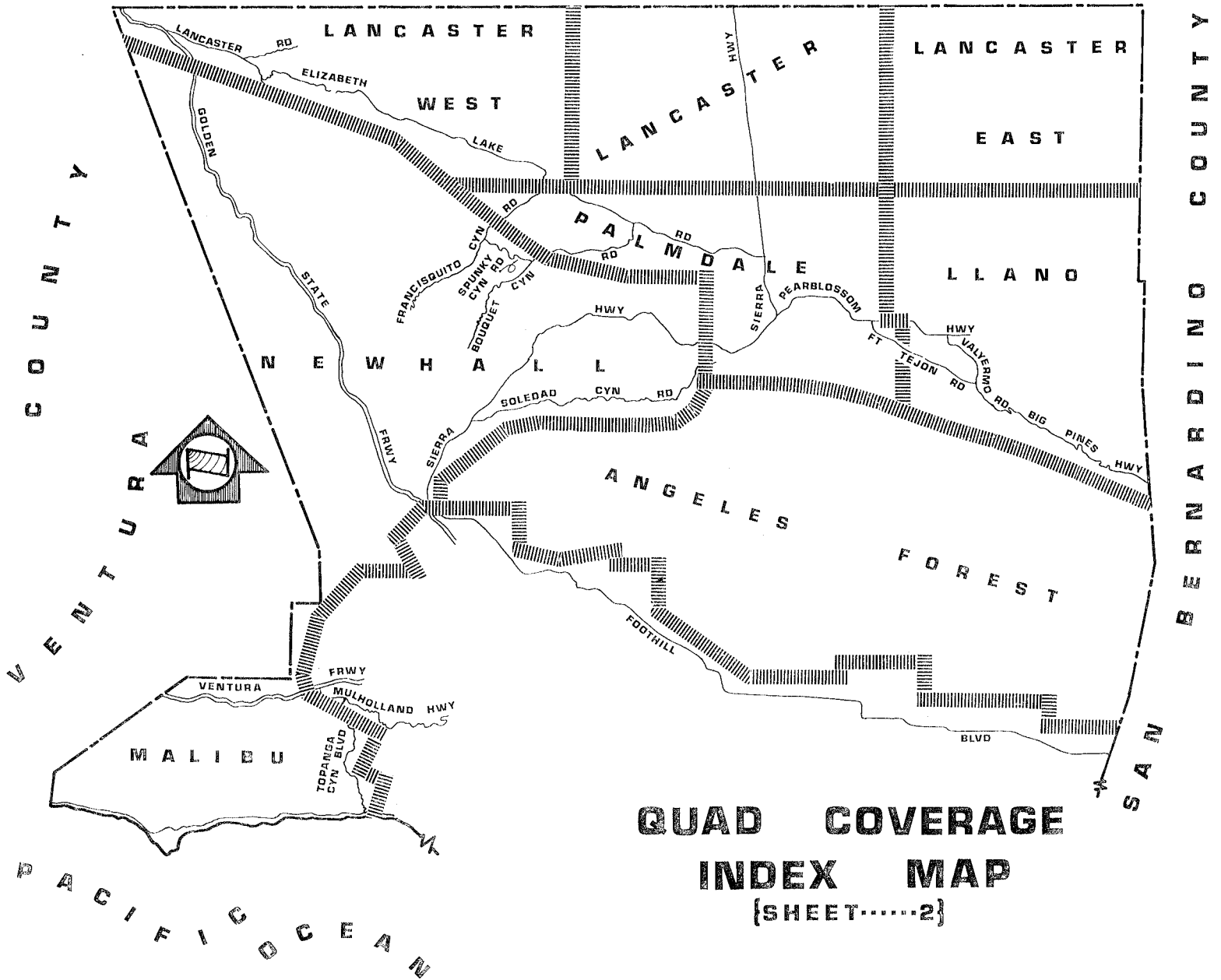
N/O ----- North of
NR ----- Near
OPP ----- Opposite
PI ----- Point of Intersection
PK&W ----- PK Nail and Washer
P/L ----- Property Line
POST ----- Point on Semi-Tangent
PP ----- Power Pole
PVMT ----- Pavement
PROD ----- Produced
RD ----- Road
RDBM ----- Road Dept. Bench Mark
RDBM TAG - Road Dept. Bench Mark Tag
RR ----- Railroad
RT ----- Right
R/W ----- Right of Way
SDMH ----- Storm Drain Manhole
SMH ----- Sewer Manhole
SPK ----- Spike
ST&W ----- Spike Tin and Washer
S/O ----- South of
TP ----- Telephone Pole
USC&GS --- U.S. Coast and Geodetic Survey
USGS ----- U.S. Geological Survey
WK ----- Walk
W/O ----- West of
D90/L-3



**QUAD COVERAGE
INDEX MAP**

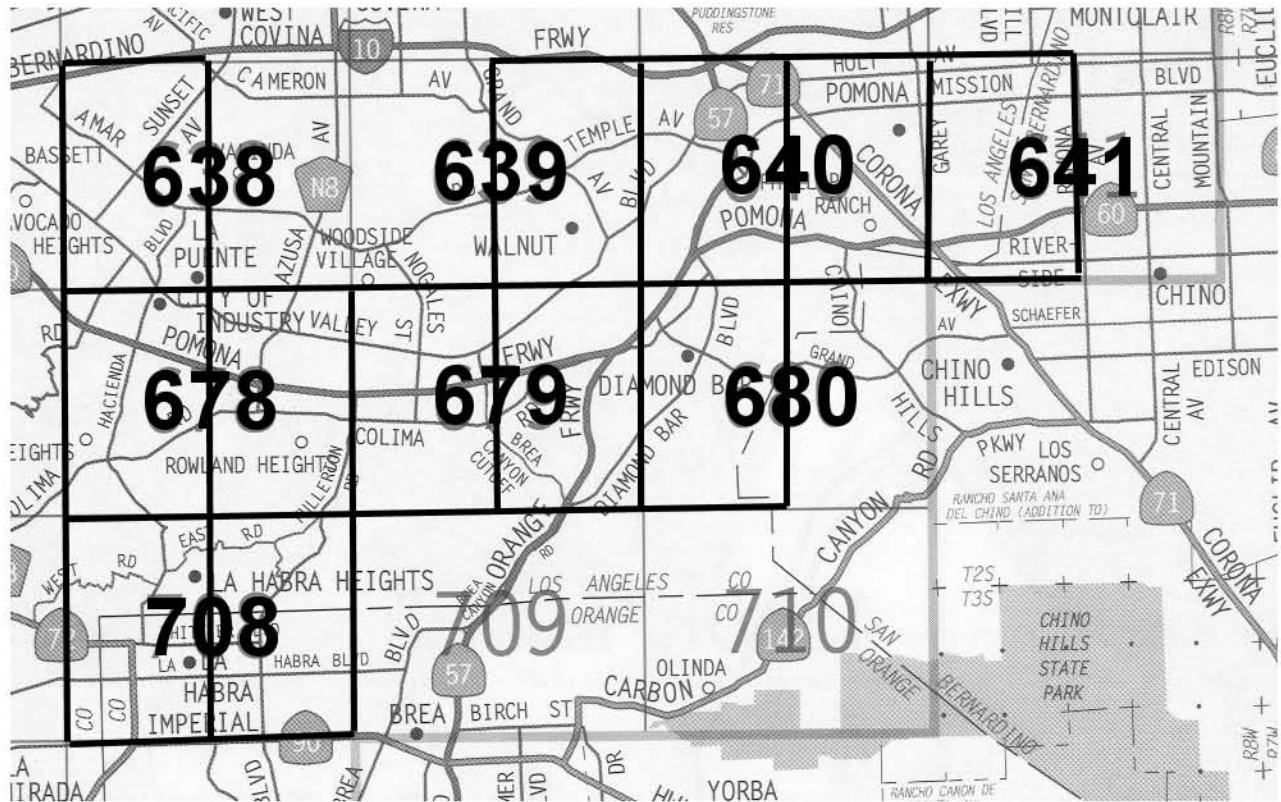
LESS: MALIBU, NEWHALL, ANGELES FOREST,
PALMDALE, & LANCASTER QUAD AREAS.*
*{SEE SHEET 2}

K E R N C O U N T Y



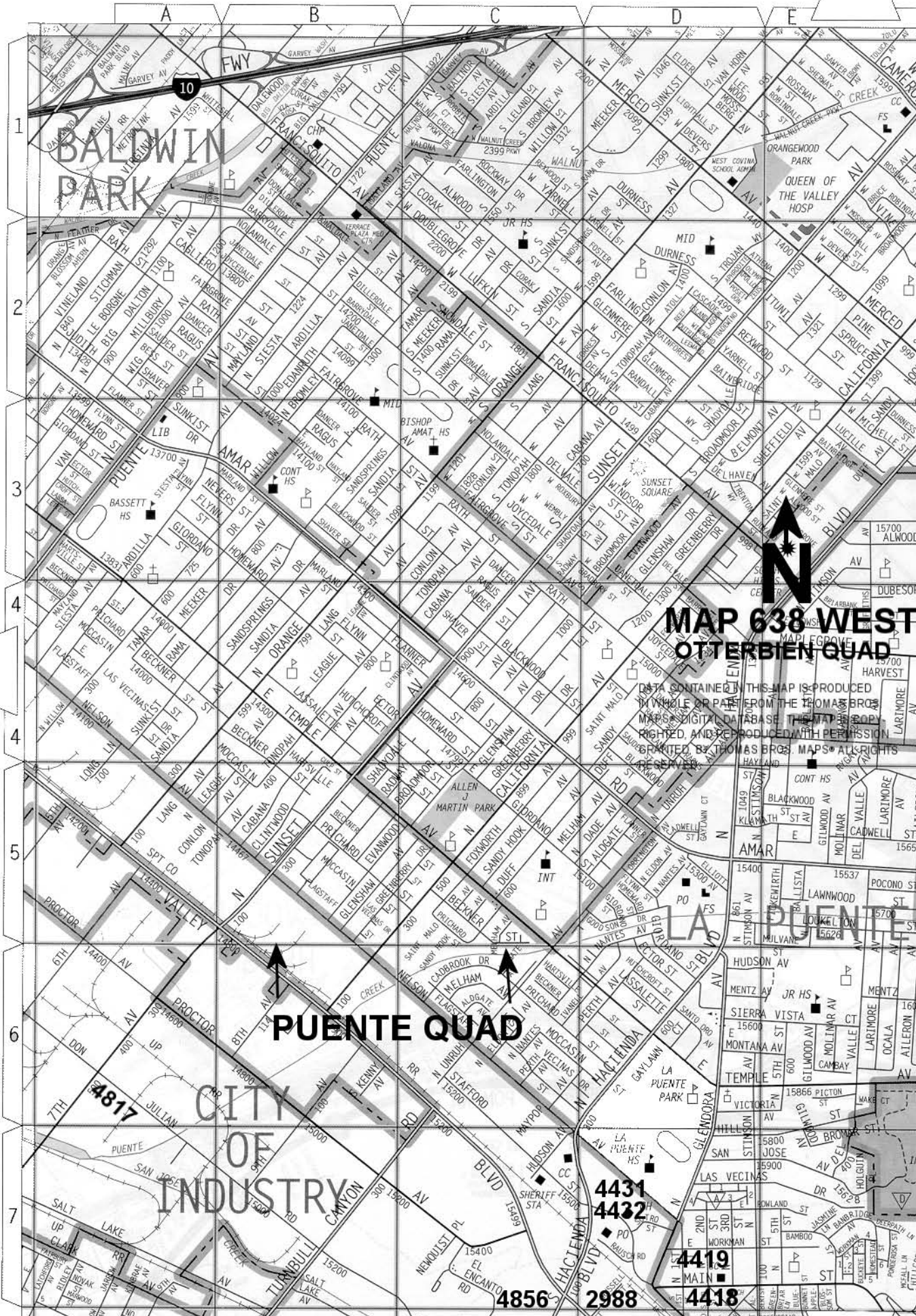
QUAD COVERAGE
INDEX MAP
 {SHEET.....2}

OTTERBEIN QUAD INDEX



**NUMBERS REFER TO
THOMAS BROS PAGE
NUMBERS.**

**EACH THOMAS BROS
PAGE IS DIVIDED INTO
TWO INDEX PAGES
EAST AND WEST**



**BALDWIN
PARK**

**MAP 638 WEST
OTTERBIEN QUAD**



DATA CONTAINED IN THIS MAP IS PRODUCED
WHOLE OR PARTIAL FROM THE THOMAS BROS.
MAPS DIGITAL DATABASE. THIS IS A COPY-
RIGHTED AND REPRODUCED WITH PERMISSION
GRANTED BY THOMAS BROS. MAPS. ALL RIGHTS
RESERVED.

PUENTE QUAD

**CITY
OF
INDUSTRY**

**4431
4432**

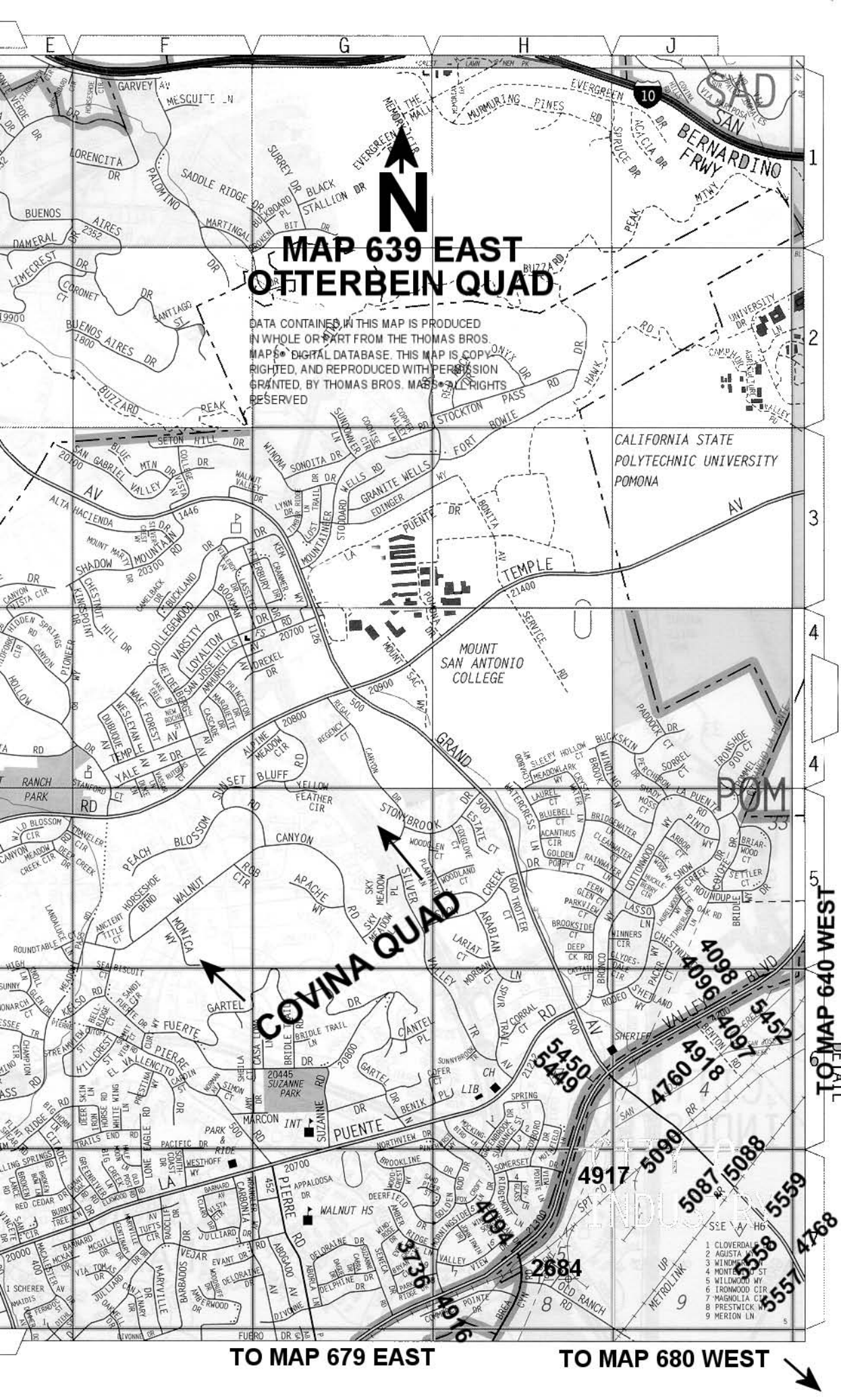
4419

4856

2988

4418

TO MAP 678 WEST



MAP 639 EAST OTTERBEIN QUAD

DATA CONTAINED IN THIS MAP IS PRODUCED IN WHOLE OR PART FROM THE THOMAS BROS. MAPS® DIGITAL DATABASE. THIS MAP IS COPYRIGHTED, AND REPRODUCED WITH PERMISSION GRANTED BY THOMAS BROS. MAPS® ALL RIGHTS RESERVED

CALIFORNIA STATE POLYTECHNIC UNIVERSITY POMONA

MOUNT SAN ANTONIO COLLEGE

COVINA QUAD

4098 4096 4097 4095 4094 4093 4092 4091 4090 4089 4088 4087 4086 4085 4084 4083 4082 4081 4080 4079 4078 4077 4076 4075 4074 4073 4072 4071 4070 4069 4068 4067 4066 4065 4064 4063 4062 4061 4060 4059 4058 4057 4056 4055 4054 4053 4052 4051 4050 4049 4048 4047 4046 4045 4044 4043 4042 4041 4040 4039 4038 4037 4036 4035 4034 4033 4032 4031 4030 4029 4028 4027 4026 4025 4024 4023 4022 4021 4020 4019 4018 4017 4016 4015 4014 4013 4012 4011 4010 4009 4008 4007 4006 4005 4004 4003 4002 4001 4000

- 1 CLOVERDALE
- 2 AGUSTA
- 3 WINDYBROOK
- 4 MONTICELLO
- 5 WILLOWDALE
- 6 IRONWOOD
- 7 MAGNOLIA
- 8 PRESTWICK
- 9 MERTON LN

TO MAP 679 EAST

TO MAP 680 WEST

TO MAP 640 WEST



DATA CONTAINED IN THIS MAP IS PRODUCED IN WHOLE OR PART FROM THE THOMAS BROS. MAPS DIGITAL DATABASE. THIS MAP IS A COPY-RIGHTED, AND REPRODUCED WITH PERMISSION GRANTED BY THOMAS BROS. AND ALL RIGHTS RESERVED.

SAN DIMAS QUAD

COVINA QUAD

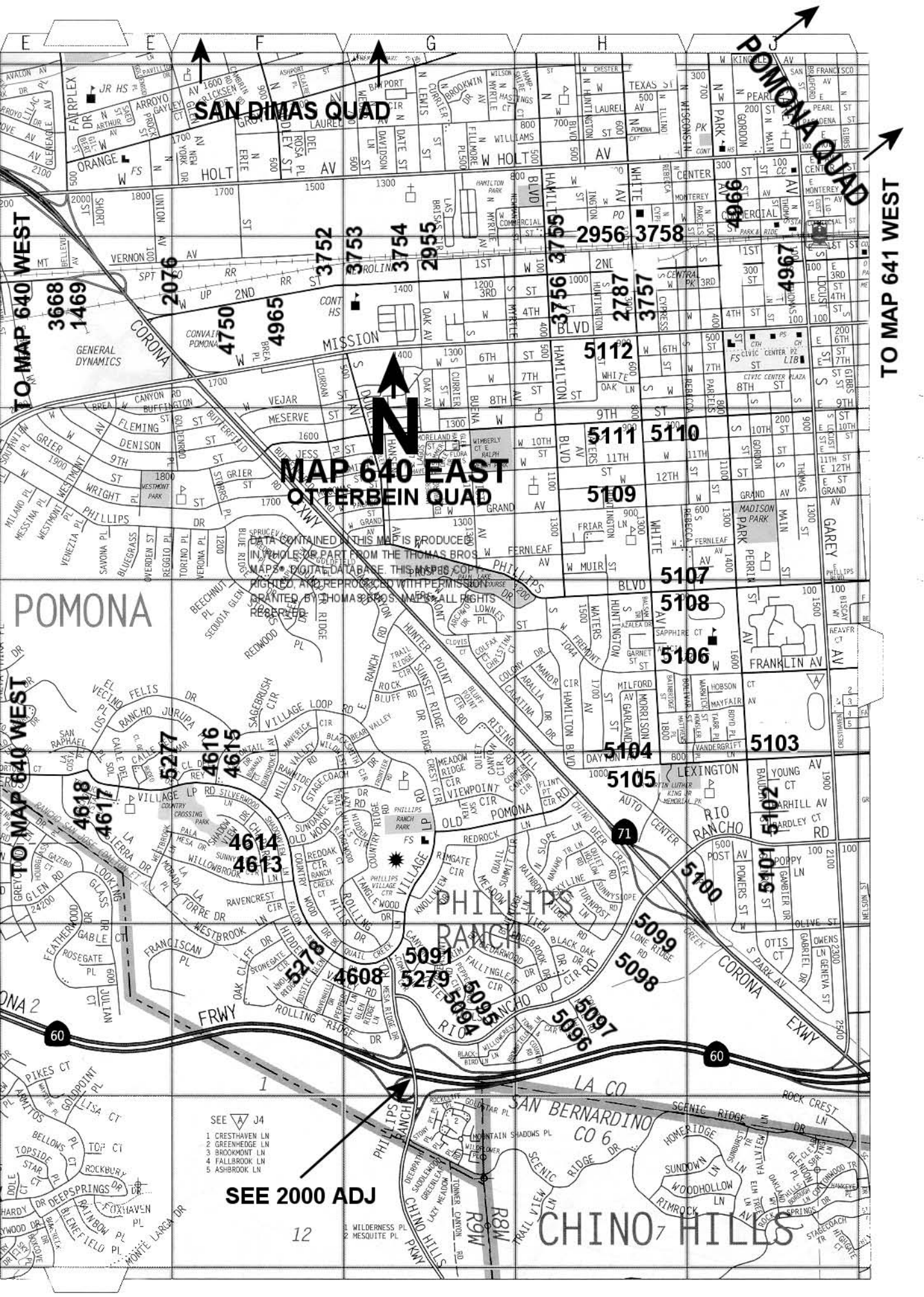
DIAMOND
MAP 640 WEST
OTTERBEIN QUAD

TO MAP 680 WEST

TO MAP 639 EAST

TO MAP 640 EAST

TO MAP 640 EAST



SAN DIMAS QUAD

POMONA QUAD

TO MAP 640 WEST

TO MAP 641 WEST



**MAP 640 EAST
OTTERBEIN QUAD**

POMONA

PHILLIPS RANCH

CHINO HILLS

- SEE J4
- 1 CRESTHAVEN LN
 - 2 GREENEDGE LN
 - 3 SHOOKMONT LN
 - 4 FALLBROOK LN
 - 5 ASHBROOK LN

SEE 2000 ADJ

TO MAP 640 EAST

POMONA QUAD

LOS ANGELES COUNTY

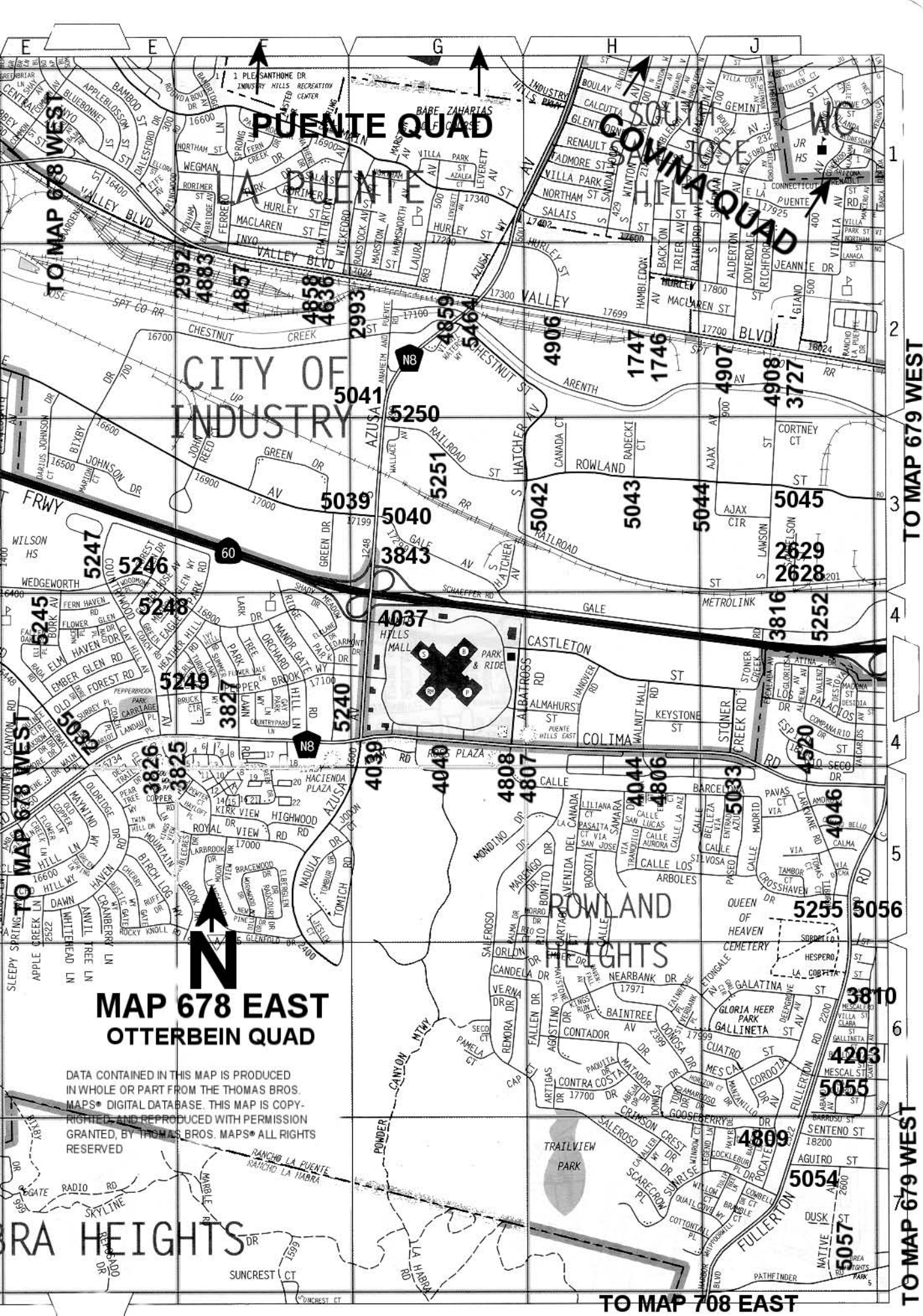
SAN BERNARDINO COUNTY

MAP 641 WEST OTTERBEIN QUAD



DATA CONTAINED IN THIS MAP IS PRODUCED BY WHOLE OR PART FROM THE THOMAS BROS. MAPS OF PHILADELPHIA. PLEASE USE THIS MAP'S COPY.

THIS MAP IS REPRODUCED WITH PERMISSION FROM THE THOMAS BROS. MAPS. ALL RIGHTS RESERVED.



PUEENTE QUAD

ROWLAND HEIGHTS QUAD

CITY OF INDUSTRY

MAP 678 EAST OTTERBEIN QUAD

DATA CONTAINED IN THIS MAP IS PRODUCED IN WHOLE OR PART FROM THE THOMAS BROS. MAPS® DIGITAL DATABASE. THIS MAP IS COPYRIGHTED AND REPRODUCED WITH PERMISSION GRANTED BY THOMAS BROS. MAPS® ALL RIGHTS RESERVED

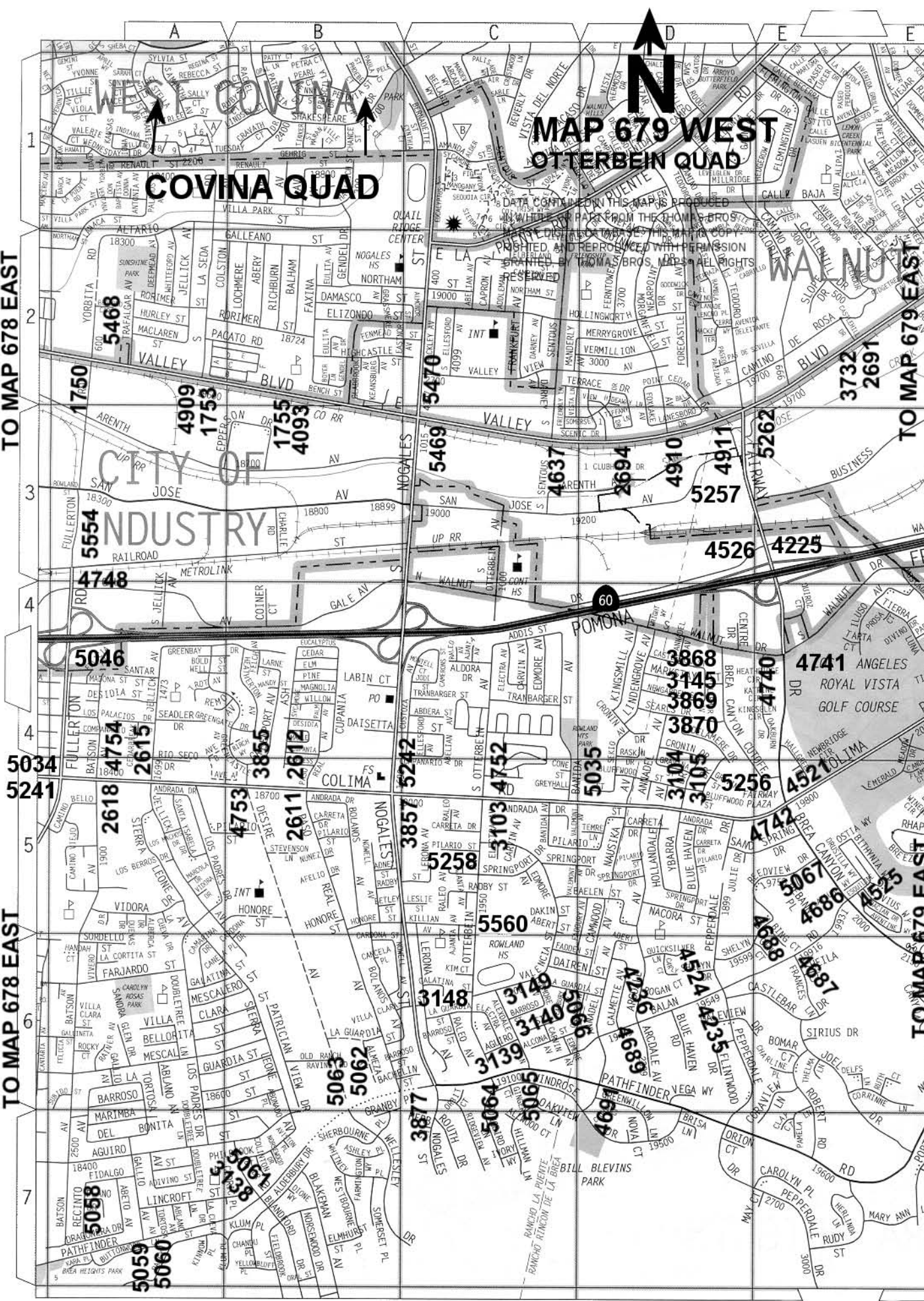
ROWLAND HEIGHTS

TO MAP 708 EAST

TO MAP 679 WEST

TO MAP 679 WEST







MAP 708 WEST OTTERBEIN QUAD

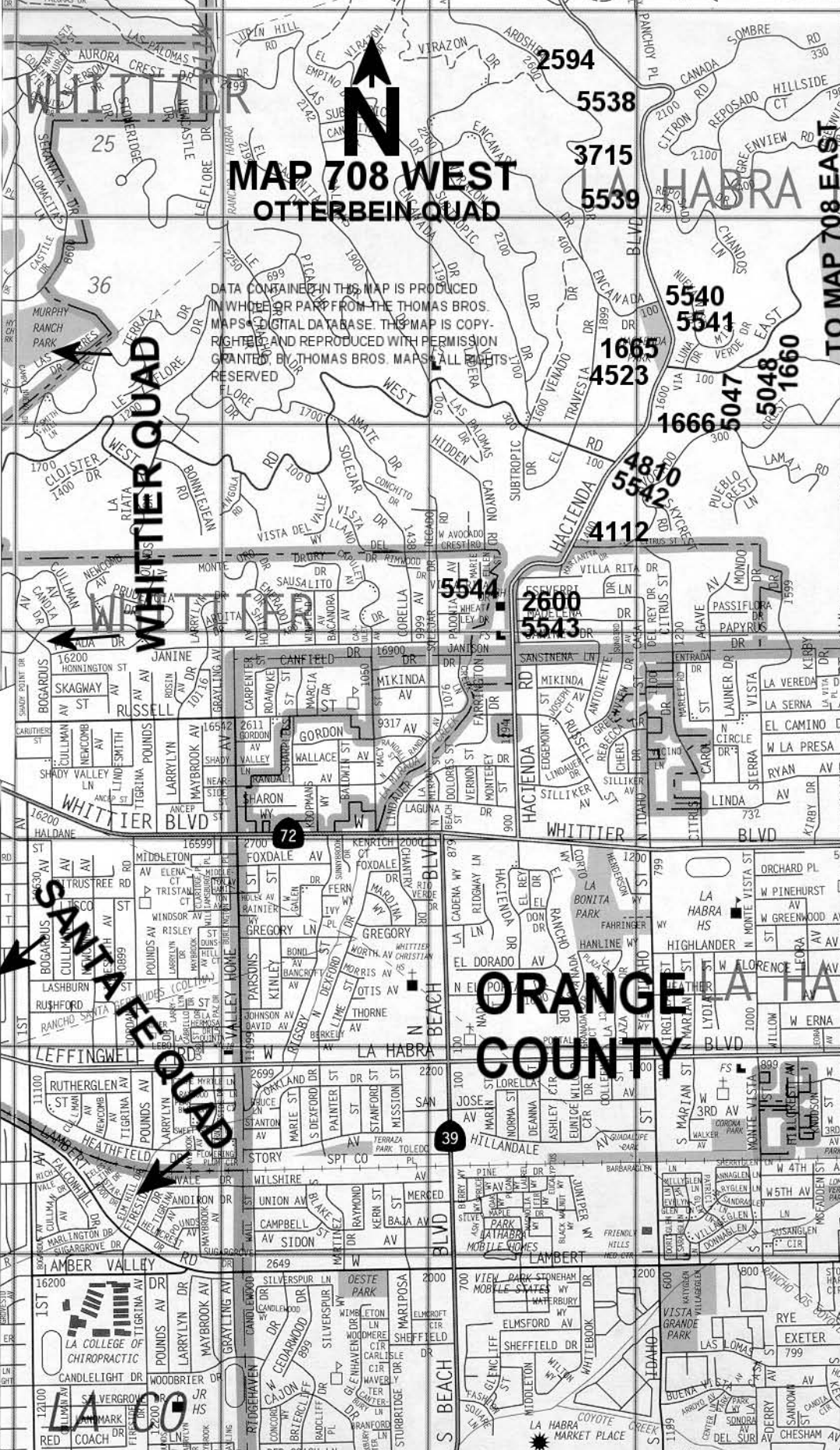
DATA CONTAINED IN THIS MAP IS PRODUCED IN WHOLE OR PART FROM THE THOMAS BROS. MAPS DIGITAL DATABASE. THIS MAP IS COPYRIGHTED AND REPRODUCED WITH PERMISSION GRANTED BY THOMAS BROS. MAPS. ALL RIGHTS RESERVED.

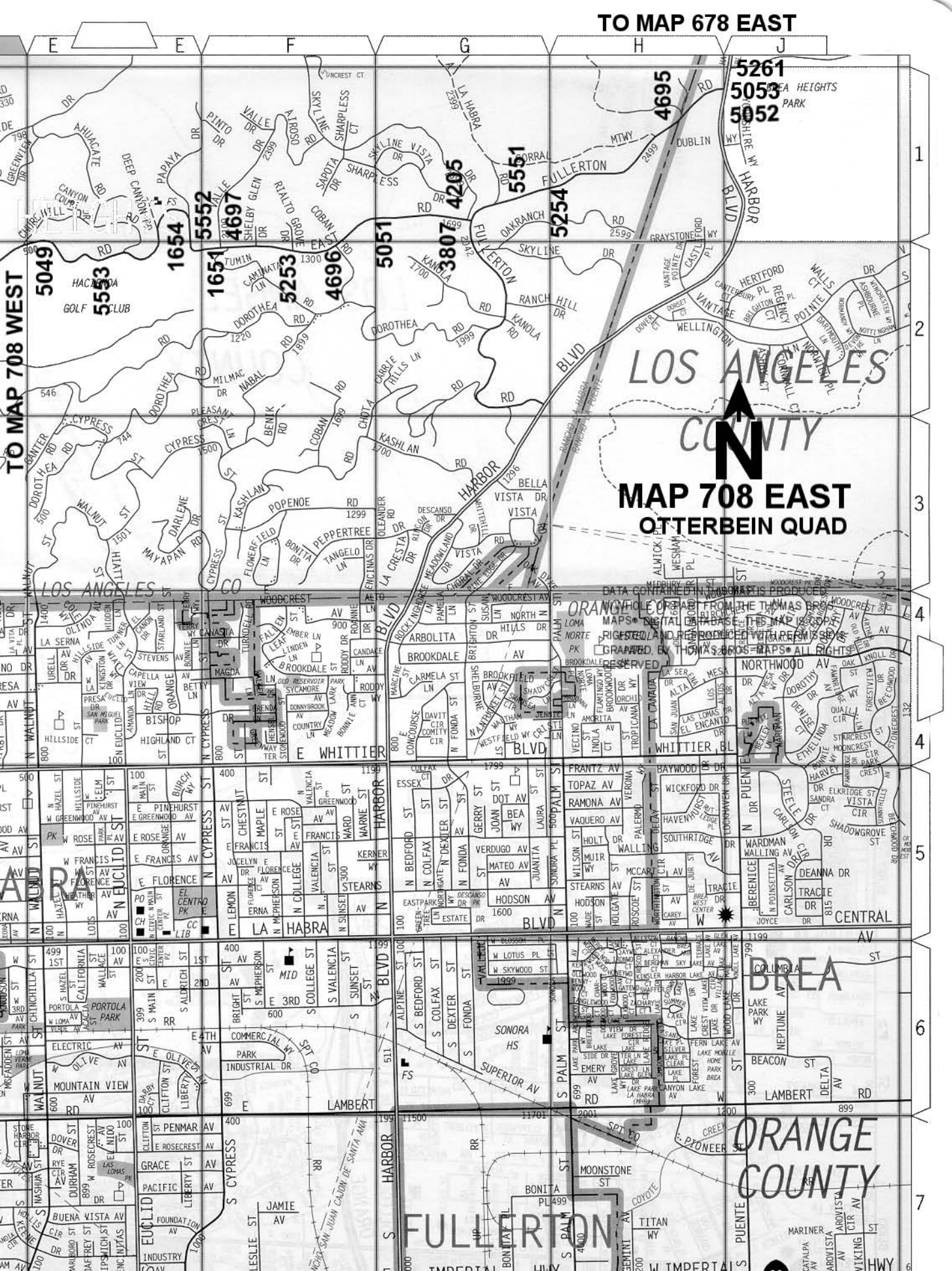
WHITTIER QUAD

SANTA FE QUAD

ORANGE COUNTY

TO MAP 708 EAST





LOS ANGELES COUNTY
 MAP 708 EAST
 OTTERBEIN QUAD

DATA COMPRISED BY THOMAS ADAMS
 ORANGE COUNTY FROM THE THOMAS ADAMS
 MAPS • DIGITAL DATABASES
 RIGHTS AND PROPERTY WITH RESERVE
 GRAPED BY THOMAS ADAMS MAPS • ALL RIGHTS
 RESERVED

BREA
 ORANGE COUNTY

FULLERTON

QUAD YEAR	ELEV FOOT/METER	DESCRIPTION	BM NUMBER
BASELINE (2005)	334.465 101.945	RDBM TAG IN N CB 3M(9.8FT) E/O BCR @ NW COR HACIENDA BLVD & GALE AVE	G 1329
BASELINE (2005)	787.606 240.063	MWD BR MON IN HDWL 2.4M(7.9FT) N/O N RAIL SPRR 23M(75.5FT) S/O C/L MT VERNON AVE & 105M(344FT) ELY/O C/L ROSELAWN ST MKD (62D 1933)	G 1469
BASELINE (2005)	500.248 152.476	CSBM MON IN S END C. B. 2.4M(7.9FT) S/O BCR @ SE COR LOS ALTOS DR & HACIENDA BLVD (SERV RD) MKD (BM 38-9A 1963 RE 5869)	G 1616
BASELINE (2005)	407.685 124.263	RDBM TAG IN N CB 300MM(1FT) E/O BCR @ NE COR HACIENDA BLVD & HALLIBURTON RD	G 1623A
OTTERBEIN (2005)	722.308 220.160	L&T IN CONC DRWY TO HSE #1141 EAST RD 23M(75.5FT) N/O C/L & 4.6M(15FT) W/O C/L VALLE DR	G 1651
OTTERBEIN (2005)	710.370 216.521	RDBM TAG IN CTR OF CONC HDWL 4.5M(15FT) N/O C/L EAST RD & 73M(240FT) S/O C/L DEEP CYN RD E/O PP #1124854E	G 1654
OTTERBEIN (2005)	608.102 185.350	L&T IN N CB EAST RD 4.5M(15FT) N/O C/L & 78M(256FT) S/O DRWY TO HSE #365 14M(46FT) N/O PP #212079E	G 1660
BASELINE (2005)	557.068 169.795	L&T IN W END CONC STEP TO OFFICE @ SE COR HACIENDA BLVD & EAST RD 15M(49FT) E/O & 12M(39FT) S/O C/L INT MKD (BM)	G 1665
BASELINE (2005)	514.556 156.837	L&BR IN CONC HDWL 600MM(2FT) S/O N END 6.4M(21FT) E/O C/L HACIENDA BLVD OPP HSE #1705 & 6.4M(21FT) N/O C/L DRWY FOR HSES #1703 & #1705	G 1666
BASELINE (2005)	345.909 105.433	RDBM TAG IN N CB OLD VALLEY BLVD 6M(20FT) N/O C/L & 41.5M(136FT) E/O C/L DRWY TO BLDG #16253 @ PP #215724E (128M(420FT) E/O C/L VALLEY BLVD OVERPASS)	G 1739
BASELINE (2005)	414.756 126.418	L&BN IN CONC BASE 3M(9.8FT) W/O CF 1.5M(5FT) S/O BCR @ SW COR VALLET BLVD & FULLERTON RD	G 1750
BASELINE (2005)	422.393 128.746	L&BR IN E CB 3.5M(11.5FT) N/O BCR @ NE COR VALLEY BLVD & LA SEDA RD	G 1753
BASELINE (2005)	435.295 132.678	RDBM TAG IN N CB VALLEY BLVD@ W END C. B. 13M(43FT) N/O C/L & 21M(69FT) E/O C/L ELY MOST DRWY TO BLDG #18711	G 1755
OTTERBEIN (2005)	874.502 266.549	SPK&L IN E CONC HDWL 39M(128FT) W/O C/L BREA CYN CUTOFF RD & 29M(95FT) N/O C/L CUTOFF CT (10FT S/O PADDLE @ GUARD RAIL)	G 1823
BASELINE (2005)	773.361 235.721	RD DISK IN HDWL 24M(79FT) N/O C/L POMONA BLVD 2.4M(7.9FT) S/O S RAIL SPRR 4M(13FT) E/O C/L RIDGEWAY ST PROD 27.5M(90FT) S/O C/L VERNON AVE	G 1962
BASELINE (2005)	800.605 244.025	CS MON IN WELL 300MM(1FT) DN ON C/L 2ND ST IN MEDIAN 750MM(2.5FT) W/O END & 95M(312FT) E/O C/L HWY 71 MKD (BM 11-85)	G 2076
OTTERBEIN (2005)	770.647 234.894	RDBM TAG IN W CB DIAMOND BAR BLVD 600MM(2FT) S/O BCR @ SW COR GOLDEN SPRINGS DR	G 2127
OTTERBEIN (2005)	765.163 233.222	RDBM TAG IN W CB DIAMOND BAR BLVD 600MM(2FT) N/O BCR @ NW COR GOLDEN SPRINGS DR	G 2128

QUAD YEAR	ELEV FOOT/METER	DESCRIPTION	BM NUMBER
OTTERBEIN (2005)	423.202 128.992	CS TAG IN W CB 300MM(1FT) N/O BCR @ NW COR HALLIBURTON RD & STIMSON AVE	G 2487
OTTERBEIN (2005)	373.430 113.822	RAM SET IN S CB 1M(3.3FT) E/O BCR @ SE COR STIMSON AVE & SIGMAN ST	G 2488
OTTERBEIN (2005)	372.867 113.650	RAM SET IN N CB 1M(3.3FT) E/O BCR @ NE COR STIMSON AVE & SIGMAN ST	G 2489
OTTERBEIN (2005)	431.329 131.469	RE TAG #10103 IN W CB 300MM(1FT) N/O BCR @ SW COR WEDGEWORTH DR & FIELDGATE AVE	G 2490
OTTERBEIN (2005)	428.802 130.699	RE TAG #10103 IN E CB @ BCR NE COR WEDGEWORTH DR & FIELDGATE AVE	G 2491
BASELINE (2005)	499.566 152.268	L&T IN N CB 1M(3.3FT) E/O BCR @ NE COR HACIENDA BLVD & LOS ALTOS DR	G 2581
BASELINE (2005)	522.166 159.157	L&BN IN E CB 600MM(2FT) N/O BCR @ NE COR HACIENDA BLVD & DEL PRADO DR	G 2583
BASELINE (2005)	524.239 159.789	L&BN IN E CB 600MM(2FT) S/O BCR @ SE COR HACIENDA BLVD & DEL PRADO DR	G 2584
BASELINE (2005)	605.169 184.456	RD BM TAG IN NLY CB RICHVIEW DR 6M(20FT) N/O C/L 9.8M(32.2FT) ELY/O BCR & 22M(72FT) ELY/O C/L HACIENDA BLVD	G 2585
BASELINE (2005)	846.832 258.115	L&T IN CONC WALL OF DRAIN 4.6M(15FT) W/O C/L HACIENDA BLVD & 322M(0.2MI) N/O C/L SKYLINE DR	G 2589
BASELINE (2005)	788.194 240.242	CS MON FL IN CONC BASE 136M(445FT) N/O C/L CANADA SOMBRE RD & 9M(30FT) W/O C/L HACIENDA BLVD 3M(10FT) W/O EDGE PVMT (13FT NLY/O PP)	G 2594
BASELINE (2005)	431.587 131.548	L&T IN S CB 300MM(1FT) E/O BCR @ SE COR HACIENDA BLVD & JANINE DR	G 2600
OTTERBEIN (2005)	479.438 146.133	RDBM TAG IN E CB 1M(3.3FT) S/O BCR @ SE COR COLIMA RD & PASO REAL AVE	G 2611
OTTERBEIN (2005)	479.420 146.128	RDBM TAG IN W CB 1M(3.3FT) S/O BCR @ SW COR COLIMA RD & PASO REAL AVE	G 2612
OTTERBEIN (2005)	465.322 141.831	CITY OF INDUSTRY DISC IN S CB 300MM(1FT) W/O BCR @ SE COR COLIMA RD & JELICK AVE INT MKD (BENCH MARK 5-9)	G 2615
OTTERBEIN (2005)	466.249 142.113	CSBM MON IN WALK 3M(9.8FT) E/O BCR 3M(9.8FT) N/O CF @ NW COR COLIMA RD & BATSON AVE MKD (BM 44-11A 1963)	G 2618
OTTERBEIN (2005)	423.307 129.024	RDBM TAG IN W CB 300MM(1FT) N/O BCR @ NW COR RAILROAD ST & LAWSON ST	G 2628
OTTERBEIN (2005)	420.930 128.300	CITY OF INDUSTRY DISK IN W CB LAWSON ST 5.5M(18FT) W/O C/L & 144M(470FT) N/O C/L RAILROAD ST MKD (BM 5-13)	G 2629
BASELINE (2005)	579.159 176.528	RDBM TAG IN CONC FTG OF 125MM(5IN) IP GUARD POST FOR 600MM(2FT) WATER LINE 49M(161FT) E/O C/L BREA CYN RD & 36M(118FT) S/O C/L VALLEY BLVD	G 2684

QUAD YEAR	ELEV FOOT/METER	DESCRIPTION	BM NUMBER
BASELINE (2005)	517.769 157.816	FC BR DISC IN E END HDWL 21.3M(70FT) S/O C/L VALLEY BLVD & 61.3M(201FT) W/O C/L PROD LEMON CREEK DR MKD (BM 102-14 1956)	G 2689
BASELINE (2005)	512.417 156.185	RDBM TAG IN N CB VALLEY BLVD 300MM(1FT) E/O BCR 12.5M(41FT) N/O C/L & 23M(75FT) E/O C/L CASTLEHILL RD	G 2691
BASELINE (2005)	484.577 147.700	RDBM TAG IN NW COR OF 1MX1M(3FTX3FT) CONC PAD FOR VENT PIPE 18M(59FT) S/O C/L VALLEY BLVD & 213M(0.1MI) E/O C/L SENTOUS AVE	G 2694
BASELINE (2005)	848.283 258.557	L&BN IN E CB 300MM(1FT) N/O BCR @ NE COR WHITE AVE & 2ND ST	G 2787
BASELINE (2005)	900.251 274.397	CSBM MON 300MM(1FT) S/O CF & 2.5M(8.2FT) W/O BCR @ SW COR 1ST ST & EAST END AVE MKD (BM 11-78A 1962 RE 5869)	G 2874
BASELINE (2005)	877.295 267.400	CSBM MON FL @ SW ABUT OF BRIDGE OVER TOWNE AVE 15.5M(51FT) W/O C/L & 8M(26FT) S/O C/L 1ST ST MKD (BM 11-79A 1962 RE 5869)	G 2878
BASELINE (2005)	826.001 251.766	CSBM MON IN WELL 200MM(0.7FT) DN SW COR 2ND ST & OAK AVE MKD (BM 11-84A 1962)	G 2955
BASELINE (2005)	320.551 97.704	RDBM TAG IN N CB VALLEY BLVD 17.5M(57FT) E/O BCR NR E END C. B. 14M(46FT) N/O C/L & 42M(138FT) E/O C/L HACIENDA BLVD	G 2988
BASELINE (2005)	337.043 102.731	RDBM TAG IN W CB 300MM(1FT) N/O BCR @ NW COR ALBERT ST & OLD VALLEY BLVD (NR S END C. B.)	G 2989
BASELINE (2005)	356.267 108.591	RDBM TAG N CB VALLEY BLVD NR W END C. B. 17.5M(57FT) N/O C/L & 16.5M(54FT) W/O C/L INT WITH OLD VALLEY BLVD (322M(0.2MI) W/O C/L FERRERO LN)	G 2992
BASELINE (2005)	378.669 115.419	RDBM TAG IN N CB VALLEY BLVD @ E END OF TWO C. B.'S 13M(43FT) N/O C/L & 157M(515FT) W/O C/L LAURA AVE	G 2993
BASELINE (2005)	404.948 123.429	CSBM MON IN WELL 4M(13FT) N/O BCR @ NE COR HACIENDA BLVD & HALLIBURTON RD MKD (BM 38-11A 1963)	G 3095
BASELINE (2005)	438.521 133.662	CSBM MON IN WELL IN W CB @ BCR NW COR HACIENDA BLVD & TETLEY ST MKD (BM 38-10A 1963 RE 5869)	G 3096
BASELINE (2005)	556.232 169.540	CSBM MON IN E END C. B. 2M(6.5FT) E/O BCR 13M(43FT) S/O C/L COLIMA RD & 18M(59FT) E/O C/L HACIENDA BLVD MKD (38-8A 1963 RE 5869)	G 3097
OTTERBEIN (2005)	647.966 197.501	RDBM TAG IN N CB COLIMA RD 13M(43FT) N/O C/L & 147M(482FT) E/O ALLENTON ST (NR CREST OF HILL)	G 3099
OTTERBEIN (2005)	651.072 198.447	RDBM TAG IN S CB COLIMA RD 13M(43FT) S/O C/L & 163M(535FT) E/O ALLENTON ST @ PP (NR CREST OF HILL)	G 3100
OTTERBEIN (2005)	629.266 191.801	RDBM TAG IN W CB 1M(3.3FT) N/O BCR @ NW COR COLIMA RD & PUNTA DEL ESTE DR	G 3101
OTTERBEIN (2005)	629.460 191.860	L&T IN NE CB RET 3.5M(11.5FT) W/O BCR 13M(42.7FT) N/O C/L COLIMA RD & 11.5M(37.7FT) E/O C/L PUNTA DEL ESTE DR	G 3102

QUAD YEAR	ELEV FOOT/METER	DESCRIPTION	BM NUMBER
OTTERBEIN (2005)	511.966 156.048	RDBM TAG IN N CB 2M(6.5FT) W/O BCR @ NE COR OTTERBEIN AVE & COLIMA RD	G 3103
OTTERBEIN (2005)	531.051 161.865	RDBM TAG IN W CB 1M(3.3FT) N/O BCR @ NW COR COLIMA RD & YBARRA DR	G 3104
OTTERBEIN (2005)	531.623 162.039	RDBM TAG IN E CB 300MM(1FT) S/O BCR @ NE COR COLIMA RD & YBARRA DR	G 3105
OTTERBEIN (2005)	594.167 181.103	RDBM TAG IN W CB LAKE CYN RD 300MM(1FT) S/O BCR @ SW COR COLIMA RD	G 3106
OTTERBEIN (2005)	594.039 181.064	L&N IN S CB COLIMA RD NR BCR @ SE COR LAKE CYN RD	G 3107
OTTERBEIN (2005)	585.460 178.449	RDBM TAG IN W CB CALBOURNE DR 300MM(1FT) N/O BCR @ NW COR GOLDEN SPRINGS RD	G 3108
OTTERBEIN (2005)	585.295 178.398	RDBM TAG E CB CALBOURNE DR 300MM(1FT) N/O BCR @ NE COR GOLDEN SPRINGS RD	G 3109
OTTERBEIN (2005)	735.571 224.203	L&T IN N CB FOUNTAIN SPRINGS RD 300MM(1FT) W/O BCR @ NW COR DIAMOND BAR BLVD	G 3121
OTTERBEIN (2005)	618.487 188.515	CE TAG IN E CB BLANDFORD DR 5M(16.4FT) S/O BCR 6M(20FT) E/O C/L & 25M(82FT) S/O C/L PATHFINDER RD	G 3138
OTTERBEIN (2005)	616.237 187.830	L&BN IN E CB ALEXDALE LANE 5.5M(18FT) E/O C/L & 54M(177FT) N/O C/L PATHFINDER RD (OPP HSE #2277)	G 3139
OTTERBEIN (2005)	602.616 183.678	RDBM TAG IN W CB ALEXDALE LN 27M(88.6FT) S/O BCR @ SW COR AGUIRO ST	G 3140
OTTERBEIN (2005)	554.374 168.974	RCE TAG #8244 IN S CB 300MM(1FT) E/O BCR @ SE COR LYCOMING ST & PENARTH AVE	G 3142
OTTERBEIN (2005)	553.207 168.618	RCE TAG #8244 IN W CB 300MM(1FT) S/O BCR @ SW COR LYCOMING ST & PENARTH AVE	G 3143
OTTERBEIN (2005)	500.807 152.646	RDBM TAG IN S CB NR BCR @ SE COR BREA CYN CUTOFF RD & WALNUT DR S	G 3145
OTTERBEIN (2005)	548.500 167.183	LS TAG #2760 IN W CB OTTERBEIN AVE 5.5M(18FT) W/O C/L & 9M(29.5FT) S/O C/L PROD VALENCIA AVE	G 3148
OTTERBEIN (2005)	553.194 168.614	CE TAG IN N CB VALENCIA AVE 6M(20FT) N/O C/L ON C/L PROD ALEXDALE LN	G 3149
BASELINE (2005)	785.814 239.517	RDBM TAG IN SLY CB POMONA BLVD 6.4M(21FT) E/O END CB 5M(16FT) S/O C/L & 165M(541FT) ELY/O C/L ROSELAWN ST	G 3668
BASELINE (2005)	556.247 169.545	RDBM TAG IN N CB 11M(36FT) E/O BCR @ NE COR HACIENDA BLVD & COLIMA RD	G 3712
BASELINE (2005)	716.659 218.438	L&BN IN CONC FTG 300MM(1FT) N/O S END BRICK WALL @ NW COR PVT RD @ #2231 HACIENDA BLVD 10.7M(35FT) W/O & 8M(26FT) N/O C/L INT (465FT S/O C/L CANADA SOMBRE RD)	G 3715

QUAD YEAR	ELEV FOOT/METER	DESCRIPTION	BM NUMBER
BASELINE (2005)	400.151 121.966	RDBM TAG IN N CB 1.5M(5FT) W/O BCR @ NW COR VALLEY BLVD & GIANO AVE	G 3727
BASELINE (2005)	510.272 155.531	CITY INDUSTRY MON IN N CB VALLEY BLVD 600MM(2FT) W/O BCR 13M(43FT) N/O C/L & 22M(72FT) W/O C/L CASTLEHILL DR MKD (V 40)	G 3732
BASELINE (2005)	521.626 158.992	RDBM TAG IN W CB 1.5M(5FT) S/O BCR @ NW COR LEMON AV & VALLEY BLVD	G 3733
BASELINE (2005)	566.703 172.732	RDBM TAG IN NWLY COR CONC BASE RR SIGNAL 27M(88FT) S/O C/L VALLEY BLVD & 7.5M(24.6FT) E/O C/L PROD MORNINGSIDE DR (6.5FT S/O S RR TRACK)	G 3736
BASELINE (2005)	712.030 217.027	RDBM TAG IN WLY CB POMONA BLVD 10M(33FT) W/O C/L & 24M(79FT) N/O C/L ENTERPRISE PL (@ S END DRWY)	G 3743
BASELINE (2005)	755.551 230.293	RDBM TAG IN SLY CB POMONA BLVD 10M(32.8FT) S/O C/L & 53M(174FT) W/O C/L PIONEER BLVD @ BLDG #2660	G 3747
BASELINE (2005)	773.076 235.634	RDBM TAG IN NW COR CONC GAS VAULT 18M(59FT) N/O N RAIL SPRR TRACK 35M(115FT) N/O N CB VALLEY BLVD & 9M(29.5FT) W/O C/L RIDGEWAY ST	G 3749
BASELINE (2005)	816.449 248.854	RDBM TAG IN N CB 2ND ST 7M(23FT) N/O C/L 2M(6.5FT) W/O BOX CULV & 34M(111FT) W/O SPRR TRACKS (402M(0.25MI) W/O C/L OAK AVE)	G 3752
BASELINE (2005)	816.469 248.861	RDBM TAG IN S CB 2ND ST 7M(23FT) S/O C/L 2M(6.5FT) W/O BOX CULV & 34M(111FT) W/O RR TRACKS (402M(0.25MI) W/O C/L OAK AVE)	G 3753
BASELINE (2005)	827.272 252.153	RDBM TAG IN S CB 300MM(1FT) E/O BCR @ SE COR OAK AVE & 2ND ST	G 3754
BASELINE (2005)	838.809 255.670	RDBM TAG IN S CB 2.5M(8.2FT) W/O BCR @ SW COR OAK AVE & HAMILTON BLVD	G 3755
BASELINE (2005)	839.895 256.001	RDBM TAG IN E CB 5M(16.4FT) N/O BCR @ NE COR 2ND ST & HAMILTON BLVD	G 3756
BASELINE (2005)	848.036 258.482	RDBM TAG IN W CB 600MM(2FT) S/O BCR @ SW COR 2ND ST & WHITE AVE	G 3757
BASELINE (2005)	876.830 267.259	L&PK IN SE ABUT OF BRIDGE OVER TOWNE AVE 24M(79FT) E/O C/L & 8M(26FT) S/O C/L FIRST ST	G 3763
BASELINE (2005)	890.315 271.369	RDBM TAG IN S CB 1ST ST 6M(20FT) S/O C/L @ E P/L WATER RESERVOIR 87M(285FT) E/O C/L ELECTRA ST	G 3767
OTTERBEIN (2005)	540.002 164.593	RDBM TAG IN S CB 1.5M(5FT) E/O BCR @ SE COR LYCOMING ST & GLENWICK AVE	G 3801
OTTERBEIN (2005)	876.373 267.119	RDBM MON IN WELL 200MM(0.7FT) DN 26M(85FT) N/O C/L EAST RD & 9M(30FT) W/O C/L SKYLINE DR MKD (1969) 50MM(2IN) IP MKR 1M(3.3FT) UP & 300MM(1FT) W/O MON	G 3807
OTTERBEIN (2005)	518.446 158.023	CE TAG #10915 IN W CB 300MM(1FT) N/O BCR @ NW COR FULLERTON RD & GALATINA ST	G 3810

QUAD YEAR	ELEV FOOT/METER	DESCRIPTION	BM NUMBER
OTTERBEIN (2005)	423.562 129.102	RDBM TAG IN N CB 3M(9.8FT) E/O BCR @ NE COR LAWSON ST & RAILROAD ST	G 3816
OTTERBEIN (2005)	603.805 184.040	RDBM TAG IN NE COR C. B. 1M(3.3FT) W/O BCR @ NW COR COLIMA RD & STIMSON AVE	G 3822
OTTERBEIN (2005)	491.924 149.939	RDBM TAG IN S CB 5.5M(18FT) E/O BCR @ SE COR COUNTRYWOOD RD & COLIMA RD	G 3825
OTTERBEIN (2005)	493.361 150.377	RDBM TAG IN N CB 2.5M(8.2FT) E/O BCR @ NE COR COUNTRYWOOD RD & COLIMA RD	G 3826
OTTERBEIN (2005)	467.649 142.540	RDBM TAG W CB 1M(3.3FT) N/O BCR @ NW COR PARKLAWN RD & COLIMA RD	G 3827
OTTERBEIN (2005)	589.677 179.734	RDBM TAG IN E END C. B. 13M(43FT) S/O C/L COLIMA RD & 145M(475FT) W/O C/L COUNTRY CYN RD 402M(0.25MI) E/O PUNTA DEL ESTE DR	G 3832
OTTERBEIN (2005)	384.259 117.122	RDBM TAG IN E CB 1M(3.3FT) N/O BCR @ SE COR SIGMAN ST & EASTLEIGH AVE	G 3838
OTTERBEIN (2005)	382.736 116.658	RDBM TAG IN N CB SIGMAN ST @ E END C. B. 5.5M(18FT) N/O C/L & 20M(65FT) W/O C/L EASTLEIGH AVE	G 3839
OTTERBEIN (2005)	438.970 133.798	RDBM TAG IN W CB 7M(23FT) S/O BCR 27M(89FT) S/O & 16M(52FT) W/O C/L INT AZUSA AVE & POMONA FRWY (E BOUND OFF-RAMP)	G 3843
OTTERBEIN (2005)	471.912 143.839	RCE TAG #10915 IN N CB 300MM(1FT) E/O BCR @ NE COR COLIMA RD & GREENCASTLE AVE	G 3855
OTTERBEIN (2005)	490.401 149.475	RDBM TAG S CB 600MM(2FT) W/O BCR @ SE COR NOGALES ST & COLIMA RD	G 3857
OTTERBEIN (2005)	599.590 182.756	L&T IN CB RET 4.5M(15FT) N/O BCR @ SW COR COLIMA RD & WALNUT LEAF DR	G 3862
OTTERBEIN (2005)	598.436 182.404	RDBM TAG IN S CB COLIMA RD 2M(6.5FT) E/O BCR @ SE COR WALNUT LEAF DR	G 3863
OTTERBEIN (2005)	569.059 173.450	LS TAG #3054 IN W CB ARKLEY DR 300MM(1FT) N/O BCR @ NW COR GOLDEN SPRING RD	G 3864
OTTERBEIN (2005)	571.080 174.066	LS TAG #3054 IN N CB GOLDEN SPRINGS RD 300MM(1FT) W/O BCR @ NE COR ARKLEY DR	G 3865
OTTERBEIN (2005)	500.948 152.689	RDBM TAG IN W CB 1M(3.3FT) S/O BCR @ SW COR WALNUT DR & BREA CYN CUT OFF RD	G 3868
OTTERBEIN (2005)	521.142 158.845	LS TAG #3054 IN W CB 6M(20FT) W/O C/L BREA CYN CUTOFF RD @ S P/L HSE #1337 39M(128FT) N/O C/L SEARLS DR	G 3869
OTTERBEIN (2005)	524.430 159.847	L&BN IN CONC FTG 2M(6.5FT) STEEL FENCE POST @ SW COR YBARRA SCH YD 9M(30FT) E/O C/L BREA CYN CUTOFF RD & 14M(46FT) S/O C/L SEARLS DR	G 3870
OTTERBEIN (2005)	593.470 180.890	CE TAG IN W CB PASO REAL AVE 2.7M(8.9FT) N/O BCR @NW COR PATHFINDER RD	G 3877

QUAD YEAR	ELEV FOOT/METER	DESCRIPTION	BM NUMBER
OTTERBEIN (2005)	815.895 248.686	RCE TAG #8793 IN W CB DIAMOND BAR BLVD 600MM(2FT) N/O BCR @ SW COR KIOWA CREST DR	G 3908
OTTERBEIN (2005)	828.847 252.633	LS TAG #2602 IN N CB ACACIA HILL DR 300MM(1FT) W/O BCR @ NW COR DIAMOND BAR BLVD	G 3909
OTTERBEIN (2005)	816.192 248.776	RDBM TAG IN W CB DIAMOND BAR BLVD @ FIRE HYD & 280M(920FT) S/O C/L GOLDEN SPRINGS DR (102FT N/O C/L SLY DRWY TO SCHOOL)	G 3915
OTTERBEIN (2005)	697.194 212.505	RDBM TAG IN S CB SUNSET CROSSING RD 10M(32.8FT) E/O BCR @ SE COR DIAMOND BAR BLVD	G 3918
OTTERBEIN (2005)	770.104 234.728	LS TAG #2825 IN N CB HIGHLAND VALLEY RD 300MM(1FT) E/O BCR @ NE COR DIAMOND BAR BLVD	G 3921
OTTERBEIN (2005)	439.157 133.855	L&T IN CTR OF SE CB RET 18M(59FT) E/O & 14M(46FT) S/O C/L INT AZUSA AVE & ENT TO PUENTE HILLS MALL (@ POMONA FRWY)	G 4037
OTTERBEIN (2005)	458.704 139.813	RDBM TAG IN E CB 1M(3.3FT) N/O BCR @ NE COR COLIMA RD & AZUSA AVE	G 4039
OTTERBEIN (2005)	466.780 142.275	RDBM TAG IN NE CB RET 2M(6.5FT) W/O BCR 13M(43FT) N/O C/L COLIMA RD & 17M(56FT) E/O C/L DRWY TO MALL @ ROBINSONS ENT 402M(0.25MI) E/O AZUSA AVE	G 4040
OTTERBEIN (2005)	451.163 137.515	CITY OF INDUSTRY MON IN C. B. 23M(75.5FT) W/O BCR 14M(46FT) S/O C/L COLIMA RD & 38M(125FT) W/O C/L WALNUT HALL RD MKD (BM CO-4)	G 4044
OTTERBEIN (2005)	489.307 149.141	RDBM TAG IN S CB 600MM(2FT) E/O BCR @ SE COR LARKVANE RD & COLIMA RD	G 4046
BASELINE (2005)	432.022 131.681	CITY INDUSTRY BM MON IN S END CONC HDWL 21M(69FT) S/O C/L VALLEY BL & 6M(20FT) W/O & OPP C/L ELY MOST DRWY TO BLDG #18711 E END	G 4093
BASELINE (2005)	579.853 176.740	FC BM MON IN N WALL OF CHANNEL @ NE COR BRIDGE 33.5M(110FT) S/O C/L VALLEY BLVD & 19M(62FT) E/O C/L BREA CYN RD MKD (BM 103-00005)	G 4094
BASELINE (2005)	650.479 198.267	L&T IN SLY CB VALLEY BLVD 12.8M(42FT) S/O C/L & 16.2M(53FT) E/O C/L DRWY ENT TO BLDG #22064 (W END BLDG)	G 4096
BASELINE (2005)	651.043 198.439	L&T IN S CB C/L MEDIAN 2.1M(6.9FT) S/O C/L VALLEY BLVD & 15.5M(51FT) E/O C/L DRWY TO BLDG #22064 (W END BLDG)	G 4097
BASELINE (2005)	654.775 199.576	RDBM TAG IN ELY CB VALLEY BLVD N END C. B. 12.8M(42FT) E/O C/L & 19M(62FT) NLY/O N DRWY TO BLDG #4200	G 4098
BASELINE (2005)	678.050 206.670	L&T IN E CB VALLEY BLVD 13M(43FT) E/O C/L & 6M(20FT) S/O C/L BRIDGE OVER SAN JOSE CREEK (ON S ABUT)	G 4100
BASELINE (2005)	677.435 206.483	L&T IN W CB VALLEY BLVD 13M(42.7FT) W/O C/L & 6M(20FT) N/O C/L BRIDGE OVER SAN JOSE CREEK (ON N ABUT)	G 4101
BASELINE (2005)	686.253 209.171	L&T IN WLY CB VALLEY BLVD 1M(3.3FT) S/O S END C. B. 13M(43FT) W/O C/L & 7.5M(24.6FT) N/O C/L DRWY TO BLDG #3745	G 4102

QUAD YEAR	ELEV FOOT/METER	DESCRIPTION	BM NUMBER
BASELINE (2005)	731.039 222.821	RDBM TAG IN E CB POMONA BLVD 600MM(2FT) N/O BCR 10M(32.8FT) E/O C/L & 10M(32.8FT) N/O C/L DRWY TO BLDG #2882 (180FT N/O C/L 57 FRWY)	G 4106
BASELINE (2005)	605.915 184.683	CSBM MON IN N END C. B. 12.5M(41FT) W/O C/L HACIENDA BLVD & 12M(39FT) S/O C/L PROD RICHVIEW DR MKD (BM 38-7A 1975 RE 7078)	G 4107
BASELINE (2005)	816.173 248.770	L&BN IN NE COR HDWL 6M(20FT) W/O C/L HACIENDA BLVD & 351M(0.2MI) N/O SKYLINE DR	G 4109
OTTERBEIN (2005)	695.572 212.011	RDBM TAG IN E CB 1M(3.3FT) S/O BCR @ NE COR DIAMOND BAR BLVD & SUNSET CROSSING RD	G 4195
OTTERBEIN (2005)	728.435 222.028	RDBM TAG IN C. B. W CB DIAMOND BAR BLVD 9M(30FT) S/O BCR @ SW COR GENTLE SPRING LN (PALOMINO DR)	G 4197
OTTERBEIN (2005)	681.735 207.793	RDBM TAG IN W CB BREA CYN RD 300MM(1FT) S/O BCR @ NW COR DIAMOND BAR BLVD	G 4198
OTTERBEIN (2005)	681.939 207.856	RDBM TAG IN S CB DIAMOND BAR BLVD 300MM(1FT) W/O BCR @ SW COR BREA CYN RD	G 4199
OTTERBEIN (2005)	535.353 163.176	RDBM TAG IN W CB 300MM(1FT) N/O BCR @ NW COR FULLERTON RD & MESCAL ST	G 4203
OTTERBEIN (2005)	869.800 265.116	L&LACO BM TAG IN E CB 300MM(1FT) N/O BCR @ NE COR EAST RD & SKYLINE DR	G 4205
OTTERBEIN (2005)	583.700 177.912	CSBM MON IN CONC BASE VENT PIPE 2M(6.5FT) N/O BCR 14M(46FT) W/O C/L BREA CYN RD & 31M(102FT) N/O C/L GOLDEN SPRINGS RD MKD (BM 44-4A 1971)	G 4206
OTTERBEIN (2005)	574.572 175.130	CSBM MON @ E END C. B. 6.5M(21.3FT) E/O BCR @ NE COR GOLDEN SPRINGS RD & LEMON AVE MKD (BM 44-5A 1975)	G 4222
OTTERBEIN (2005)	572.016 174.351	RDBM TAG IN N CB GOLDEN SPRINGS RD 600MM(2FT) E/O BCR @ NW COR LEMON AVE	G 4223
OTTERBEIN (2005)	485.996 148.132	RDBM TAG IN W END C. B. 14.5M(47.5FT) E/O BCR @ SE COR WALNUT DR N & FAIRWAY DR	G 4225
OTTERBEIN (2005)	605.831 184.658	RDBM TAG IN N CB BALAN RD 1.5M(5FT) W/O BCR @ NW COR PEPPERDALE DR	G 4235
OTTERBEIN (2005)	609.288 185.712	RDBM TAG IN N CB BALAN RD 1.5M(5FT) W/O BCR @ NW COR ARCDALE AVE	G 4236
OTTERBEIN (2005)	827.034 252.081	LS TAG #2602 IN W CB DIAMOND BAR BLVD 300MM(1FT) S/O BCR @SW COR ACACIA HILL RD	G 4241
OTTERBEIN (2005)	848.217 258.537	RDBM TAG IN S END C. B. 15.5M(51FT) W/O C/L DIAMOND BAR BLVD & 130M(426FT) S/O C/L MOUNTAIN LAUREL @ HSE #1729	G 4242
OTTERBEIN (2005)	879.968 268.215	RDBM TAG IN E CB DIAMOND BAR BLVD 600MM(2FT) S/O BCR @ SE COR QUAIL SUMMIT DR	G 4243
OTTERBEIN (2005)	915.877 279.160	RCE TAG #14010 IN S CB 3.5M(11.5FT) W/O BCR @ SW COR DIAMOND BAR BLVD & TIN DR	G 4244

QUAD YEAR	ELEV FOOT/METER	DESCRIPTION	BM NUMBER
OTTERBEIN (2005)	916.300 279.289	RCE TAG #14010 IN N CB 3.4M(11FT) W/O BCR @ NW COR TIN DR & DIAMOND BAR BLVD	G 4245
BASELINE (2005)	332.419 101.322	RCE TAG #5828 IN E CB GLENDORA AVE 1M(3.3FT) N/O BCR 13M(43FT) E/O C/L & 13.5M(44FT) N/O C/L MAIN ST	G 4418
BASELINE (2005)	331.272 100.972	RDBM TAG IN W CB 300MM(1FT) N/O BCR @ NW COR STAFFORD ST & GLENDORA AVE	G 4419
BASELINE (2005)	323.778 98.688	RDBM TAG IN E CB HACIENDA BL 14M E/O C/L 300MM S/O BCR & 30.5M S/O C/L STAFFORD ST	G 4431
BASELINE (2005)	324.161 98.805	RDBM TAG IN S CB STAFFORD ST 300MM W/O BCR 14M S/O C/L & 21.5M W/O C/L HACIENDA BLVD	G 4432
OTTERBEIN (2005)	488.542 148.908	L&T IN W CB 300MM(1FT) N/O BCR @ NW COR COLIMA RD & LARKVANE RD	G 4520
OTTERBEIN (2005)	571.964 174.335	RDBM TAG IN W END C. B. 21M(69FT) E/O BCR @ SE COR BREA CYN CUTOFF RD & COLIMA RD	G 4521
BASELINE (2005)	554.820 169.110	L&BN IN CONC FTG 300MM(1FT) N/O S END BRICK WALL @ NW COR PVT RD @ #2231 HACIENDA BLVD 10.7M(35FT) W/O & 8M(26FT) N/O C/L INT (465FT S/O C/L CANADA SOMBRE RD)	G 4523
OTTERBEIN (2005)	606.061 184.728	RDBM TAG IN S CB BALAN RD 300MM(1FT) W/O BCR @ SW COR PEPPERDALE DR	G 4524
OTTERBEIN (2005)	643.904 196.263	RDBM TAG IN SE COR C. B. 2.5M(8.2FT) S/O BCR @ SE COR BREA CUTOFF RD & ESQUILINE AVE	G 4525
OTTERBEIN (2005)	486.512 148.289	RDBM TAG IN W END C. B. 7.5M(24.6FT) E/O BCR @ NE COR WALNUT DR N & FAIRWAY DR	G 4526
OTTERBEIN (2005)	782.250 238.431	RCE TAG #8793 IN W CB DIAMOND BAR BLVD 450MM(1.5FT) N/O BCR @ SW COR MORNING CYN DR	G 4529
OTTERBEIN (2005)	773.155 235.658	L&T IN E CB DIAMOND BAR BLVD 300MM(1FT) N/O BCR @ NE COR PATHFINDER RD	G 4530
OTTERBEIN (2005)	741.043 225.871	RD TAG IN WALK 13.4M(44FT) E/O C/L DIAMOND BAR BLVD & 157M(515FT) N/O C/L CROOKED CREEK DR	G 4532
OTTERBEIN (2005)	860.887 262.399	DPW BM TAG IN W CB 600MM(2FT) S/O BCR @ SW COR VILLAGE LOOP RD & PHILLIPS RANCH RD	G 4608
OTTERBEIN (2005)	913.845 278.541	DPW BM TAG IN E CB 600MM(2FT) S/O BCR @ SE COR VILLAGE LOOP RD & OLD WOOD RD	G 4613
OTTERBEIN (2005)	914.784 278.827	DPW BM TAG IN E CB 600MM(2FT) N/O BCR @ NE COR VILLAGE LOOP RD & OLD WOOD RD	G 4614
OTTERBEIN (2005)	936.255 285.371	DPW BM TAG IN N CB 300MM(1FT) E/O BCR @ NE COR VILLAGE LOOP RD & SANTA CLARA RD	G 4615
OTTERBEIN (2005)	938.399 286.025	DPW BM TAG IN N CB 300MM(1FT) W/O BCR @ NW COR VILLAGE LOOP RD & SANTA CLARA DR	G 4616

QUAD YEAR	ELEV FOOT/METER	DESCRIPTION	BM NUMBER
OTTERBEIN (2005)	1,054.678 321.467	DPW BM TAG IN S CB 1M(3.3FT) W/O BCR @ SW COR SANTA CLARA DR & LOS FELIS DR	G 4617
OTTERBEIN (2005)	1,055.343 321.670	DPW BM TAG N CB 300MM(1FT) W/O BCR @ NW COR SANTA CLARA DR & LOS FELIS DR	G 4618
OTTERBEIN (2005)	963.742 293.749	DPW BM TAG IN S CB 1M(3.3FT) E/O BCR @ SE COR TEMPLE AVE & GOLDEN SPRINGS DR	G 4619
OTTERBEIN (2005)	959.241 292.378	DPW BM TAG IN S CB 300MM(1FT) W/O BCR @ SW COR TEMPLE AVE & GOLDEN SPRINGS DR	G 4620
OTTERBEIN (2005)	899.056 274.033	DPW BM TAG IN S CB TEMPLE AVE 600MM(2FT) E/O BCR @ SE COR DIAMOND BAR BLVD	G 4621
OTTERBEIN (2005)	985.042 300.242	DPW BM TAG IN S CB 300MM(1FT) W/O BCR @ SW COR GRAND AVE & ROLLING KNOLL RD	G 4623
OTTERBEIN (2005)	992.693 302.574	RCE TAG #9757 IN S CB 300MM(1FT) E/O BCR @ SE COR GRAND AVE & ROLLING KNOLL RD	G 4624
OTTERBEIN (2005)	1,162.033 354.189	DPW BM TAG IN S CB 7.5M(24.6FT) W/O BCR @ SW COR GRAND AVE & SHOTGUN LN (EXIT)	G 4625
OTTERBEIN (2005)	1,162.691 354.389	DPW BM TAG IN S CB 300MM(1FT) E/O BCR @ SE COR GRAND AVE & SHOTGUN LN (EXIT)	G 4626
OTTERBEIN (2005)	1,030.853 314.205	DPW BM TAG IN E CB 2.5M(8.2FT) N/O BCR @ NE COR GRAND AVE & LONGVIEW DR	G 4628
BASELINE (2005)	441.084 134.443	DPW BM TAG IN S CB 300MM(1FT) W/O BCR @ SW COR HACIENDA BLVD & TETLEY ST	G 4633
BASELINE (2005)	374.664 114.198	DPW BM TAG IN N CB 300MM(1FT) W/O BCR @ NW COR VALLEY BLVD & WICKFORD AVE	G 4636
BASELINE (2005)	474.614 144.663	RCE TAG #5828 IN N CB 300MM(1FT) E/O BCR @ NE COR VALLEY BLVD & SENTOUS AVE	G 4637
BASELINE (2005)	731.400 222.931	USC&GS BR DISK IN W CB POMONA BLVD @ S END C. B. 10M(32.8FT) W/O C/L & 56M(184FT) N/O C/L (57 FRWY) MKD (G 1329 1978)	G 4641
BASELINE (2005)	758.002 231.040	L&T IN E CB POMONA BLVD 10M(32.8FT) E/O C/L ON C/L PROD PIONEER PL	G 4642
BASELINE (2005)	899.222 274.084	DPW BM TAG IN E CB 1.5M(5FT) S/O BCR @ SE COR 1ST ST & EAST END AVE	G 4643
OTTERBEIN (2005)	890.796 271.515	DPW BM TAG IN N CB TEMPLE AVE 1M(3.3FT) E/O BCR @ NE COR DIAMOND BAR BLVD	G 4673
OTTERBEIN (2005)	875.964 266.995	DPW BM TAG IN N CB DIAMOND BAR BLVD @ BCR @ W END C. B. @ NE COR SOLTAIRE ST	G 4674
OTTERBEIN (2005)	770.830 234.950	RDBM TAG IN W CB DIAMOND BAR BLVD 1M(3.3FT) S/O BCR @ SW COR HIGHLAND VALLEY RD	G 4675
OTTERBEIN (2005)	817.566 249.195	DPW BM TAG IN W CB DIAMOND BAR BLVD 1.5M(5FT) N/O BCR @ NW COR KIOWA CREST DR (S END C. B.)	G 4676

QUAD YEAR	ELEV FOOT/METER	DESCRIPTION	BM NUMBER
OTTERBEIN (2005)	774.372 236.029	DPW BM TAG W CB DIAMOND BAR BLVD @ S END C. B. 8M(26.2FT) N/O BCR @ NW COR PATHFINDER BLVD	G 4677
OTTERBEIN (2005)	889.593 271.149	DPW BM TAG W END C. B. 12M(39FT) W/O BCR 10M(33FT) N/O C/L PATHFINDER RD & 32M(105FT) W/O C/L BREA CYN CUTOFF RD	G 4681
OTTERBEIN (2005)	886.133 270.094	DPW BM TAG IN S END C. B. 46M(151FT) N/O C/L PATHFINDER RD & 11M(36FT) W/O C/L BREA CYN CUTOFF RD	G 4682
OTTERBEIN (2005)	808.131 246.319	L&T IN W CB BREA CYN CUTOFF RD @ N END C. B. 10M(33FT) W/O C/L & 13M(43FT) S/O C/L OAKLEAF CYN RD	G 4683
OTTERBEIN (2005)	804.544 245.226	L&T IN N CB OAKLEAF CYN RD @ E END C. B. 5.5M(18FT) N/O C/L & 18M(59FT) W/O C/L BREA CYN CUTOFF RD	G 4684
OTTERBEIN (2005)	735.600 224.212	DPW BM TAG IN E CB BREA CYN CUTOFF RD 2.5M(8.2FT) S/O BCR @ SE COR BICKFORD DR	G 4685
OTTERBEIN (2005)	637.203 194.220	DPW BM TAG IN E CB BREA CYN CUTOFF RD 3M(9.8FT) N/O BCR @ NE COR ESQUILINE AVE	G 4686
OTTERBEIN (2005)	667.281 203.388	DPW BM TAG IN S CB BALAN RD 1.5M(5FT) E/O BCR @ W END C. B. @ SE COR FRANCES LN	G 4687
OTTERBEIN (2005)	665.079 202.717	DPW BM TAG IN W CB FRANCES LN 1.5M(5FT) S/O BCR @ N END C. B. @ SW COR BALAN RD	G 4688
OTTERBEIN (2005)	617.112 188.096	DPW BM TAG IN S CB BALAN RD 7M(23FT) E/O BCR @ E END C. B. 6M(20FT) S/O C/L & 19M(62FT) E/O C/L ARCDALE AVE	G 4689
OTTERBEIN (2005)	636.006 193.855	DPW BM TAG IN S CB PATHFINDER RD @ BCR @ SW COR ANNADEL AVE	G 4691
OTTERBEIN (2005)	709.525 216.264	L&BR IN SW COR CONC DR TO HSE #2360 FULLERTON RD 11M(36FT) E/O C/L & 1M(3.3FT) E/O SE COR BRICK PILLAR	G 4695
OTTERBEIN (2005)	781.333 238.151	DPW BM TAG IN CONC HDWL OPP DRWY TO HSE #1409 EAST RD 5.5M(18FT) S/O C/L & 21.5M(70.5FT) E/O C/L CORBIN RD	G 4696
OTTERBEIN (2005)	724.487 220.824	CS TAG IN N END CONC HDWL @ SW COR EAST RD & TUMIN RD 28M(92FT) W/O & 3.7M(12FT) S/O C/L INT	G 4697
OTTERBEIN (2005)	527.071 160.652	DPW BM TAG IN W CB LEMON AVE 300MM(1FT) N/O BCR @ NW COR BUSINESS PKWY	G 4735
OTTERBEIN (2005)	528.030 160.944	DPW BM TAG IN W CB 1.5M(5FT) S/O BCR @ SW COR LEMON AVE & BUSINESS PKWY	G 4736
OTTERBEIN (2005)	562.852 171.558	DPW BM TAG IN N CB 300MM(1FT) W/O BCR @ NW COR BREA CYN RD & LYCOMING ST	G 4738
OTTERBEIN (2005)	582.601 177.577	DPW BM TAG E CB BREA CYN RD 14M(46FT) N/O BCR @ NE COR GOLDEN SPRINGS RD	G 4739
OTTERBEIN (2005)	506.771 154.464	DPW BM TAG IN W CB 300MM(1FT) N/O BCR @ NW COR FAIRWAY DR & WALNUT DR (SOUTH)	G 4740

QUAD YEAR	ELEV FOOT/METER	DESCRIPTION	BM NUMBER
OTTERBEIN (2005)	508.353 154.946	L&T IN W CB 300MM(1FT) S/O BCR @ SW COR FAIRWAY DR & WALNUT DR (SOUTH)	G 4741
OTTERBEIN (2005)	570.507 173.891	L&T IN E CB 300MM(1FT) N/O BCR @ NE COR FAIRWAY DR & COLIMA RD	G 4742
OTTERBEIN (2005)	422.969 128.921	DPW BM TAG IN E CB 300MM(1FT) N/O BCR @ NE COR HALLIBURTON RD & STIMPSON AVE	G 4743
OTTERBEIN (2005)	430.123 131.102	RCE TAG #20330 IN E CB 1.5M(5FT) N/O BCR @ NE COR RAILROAD ST & FULLERTON RD	G 4748
BASELINE (2005)	801.108 244.178	L&N IN S CB 2ND ST NR E END C. B. 9M(30FT) S/O C/L & 100M(328FT) E/O C/L HWY 71	G 4750
OTTERBEIN (2005)	509.077 155.167	DPW BM TAG IN W CB 300MM(1FT) N/O BCR @ NW COR OTTERBEIN AVE & COLIMA RD	G 4752
OTTERBEIN (2005)	471.250 143.637	RCE TAG #10915 IN N CB 300MM(1FT) W/O BCR @ NW COR COLIMA RD & GREENCASTLE AVE	G 4753
OTTERBEIN (2005)	465.561 141.903	DPW BM TAG IN S CB 1M(3.3FT) E/O BCR @ SE COR COLIMA RD & BATSON AVE	G 4754
OTTERBEIN (2005)	607.229 185.084	L&BR IN W CB NW COR BRIDGE OVER SAN JOSE CREEK 14M(46FT) W/O C/L GRAND AVE & 228M(0.2MI) S/O C/L VALLEY BLVD	G 4760
OTTERBEIN (2005)	731.753 223.039	L&BR IN CONC HDWL 19M(62FT) E/O C/L GRAND AVE & 483M(1580FT) N/O C/L OLD BREA CYN RD	G 4768
OTTERBEIN (2005)	701.468 213.808	L&T IN E CB GRAND AVE 13M(43FT) E/O C/L & 65M(213FT) S/O C/L OLD BREA CYN RD (60 FRWY ON-OFF RAMP) 38M(125FT) S/O BCR	G 4769
OTTERBEIN (2005)	702.153 214.017	L&T IN E CB OF ISL @ C/L GRAND AVE & 65M(213FT) S/O C/L OLD BREA CYN RD (60 FRWY ON-OFF RAMP)	G 4770
BASELINE (2005)	337.397 102.839	RCE TAG #5828 IN N CB 300MM(1FT) E/O BCR @ NE COR OLD VALLEY BLVD & ALBERT ST (NR W END C. B.)	G 4804
OTTERBEIN (2005)	450.958 137.452	DPW BM TAG N CB @ W END C. B. 19M(62.3FT) W/O BCR @ NW COR COLIMA RD & WALNUT HALL RD	G 4806
OTTERBEIN (2005)	458.414 139.725	DPW BM TAG E CB 300MM(1FT) N/O BCR @ NE COR ALBATROSS ST & COLIMA RD	G 4807
OTTERBEIN (2005)	457.700 139.507	DPW BM TAG IN W CB 300MM(1FT) N/O BCR OF N END DRWY @ NW COR COLIMA RD & ALBATROSS ST 35M(115FT) N/O & 10M(32.8FT) W/O C/L INT	G 4808
OTTERBEIN (2005)	553.132 168.595	DPW BM TAG IN E CB 600MM(2FT) S/O BCR @ SE COR SENTENO ST & FULLERTON RD	G 4809
BASELINE (2005)	496.633 151.374	DPW BM TAG IN CONC HDWL 150MM(0.5FT) S/O N END 7M(23FT) W/O C/L HACIENDA BLVD & 14M(46FT) N/O C/L PROD WEST RD (3.3FT S/O PP NO#)	G 4810
BASELINE (2005)	687.276 209.482	DPW BM TAG IN E CB HACIENDA BLVD @ LT STD 17M(56FT) E/O C/L & 144M(472FT) S/O C/L GLENMARK DR (OPP EQUESTRIAN CROSSING UNDERPASS)	G 4811

QUAD YEAR	ELEV FOOT/METER	DESCRIPTION	BM NUMBER
BASELINE (2005)	469.339 143.055	L&T IN W CB N END C. B. 1.5M(5FT) S/O BCR @ SW COR LA SUBIDA DR & HACIENDA BL	G 4812
BASELINE (2005)	343.973 104.843	DPW BM TAG IN E CB HACIENDA BLVD 13M(43FT) E/O C/L & 8M(26FT) S/O C/L OF W BOUND OFF-RAMP (60 FRWY)	G 4814
BASELINE (2005)	332.434 101.326	CE TAG IN N CB 100MM(0.3FT) E/O BCR @ NE COR HACIENDA BL & WALBROOK DR	G 4853
BASELINE (2005)	333.339 101.602	DPW BM TAG E CB 41.5M(136FT) N/O BCR @ NE COR HACIENDA BLVD & WALBROOK DR @ ST LT #2271712E	G 4854
BASELINE (2005)	320.926 97.819	DPW BM TAG IN E CB 1M(3.3FT) N/O BCR @ NE COR HACIENDA BLVD & VALLEY BLVD	G 4856
BASELINE (2005)	360.233 109.799	DPW BM TAG IN N CB @ W END C. B. 5M(16.4FT) E/O BCR @ NE COR VALLEY BLVD & FERRERO LN	G 4857
BASELINE (2005)	375.261 114.380	DPW BM TAG IN N CB W END C. B. 1M(3.3FT) E/O BCR @ NE COR VALLEY BLVD & WICKFORD AVE	G 4858
BASELINE (2005)	382.316 116.530	DPW BM TAG IN E CB 1M(3.3FT) N/O BCR @ NE COR VALLEY BLVD & AZUSA WAY	G 4859
BASELINE (2005)	356.005 108.511	L&BN 2M(6.5FT) W/O E END CONC HDWL CULV 520MM(1.7FT) S/O SLY CF NEW VALLEY BLVD 40M(131FT) S/O C/L & 17M(56FT) W/O APPROX C/L INT WITH OLD VALLEY BLVD	G 4883
BASELINE (2005)	384.807 117.290	L&BR IN W END C. B. 150MM(0.5FT) E/O BCR @ NE COR VALLEY BLVD & HURLEY ST	G 4906
BASELINE (2005)	396.336 120.804	L&BR IN N CB 1.5M(5FT) W/O BCR @ NW COR VALLEY BLVD & ALDERTON AVE	G 4907
BASELINE (2005)	400.718 122.139	L&BR IN N CB 600MM(2FT) E/O BCR @ NE COR VALLEY BLVD & GIANO AVE	G 4908
BASELINE (2005)	422.325 128.725	L&BR IN CTR OF C. B. 7.2M(23.6FT) N/O BCR @ NW COR VALLEY BLVD & LA SEDA RD	G 4909
BASELINE (2005)	489.234 149.119	DPW BM TAG IN E CB CAMINO DE TEODORO 750MM(2.5FT) N/O BCR 6M(20FT) E/O C/L & 30.5M(100FT) N/O C/L VALLEY BLVD (NR S END C. B.)	G 4911
BASELINE (2005)	521.874 159.068	DPW BM TAG IN N CB VALLEY BLVD 5M(16.4FT) E/O BCR 13M(43FT) N/O C/L & 30M(98FT) E/O C/L LEMON AVE @ C. B.	G 4912
BASELINE (2005)	527.744 160.857	L&BR IN E CB PASEO TESORO 300MM(1FT) N/O BCR 7.5M(24.6FT) E/O C/L & 24M(79FT) N/O C/L VALLEY BLVD	G 4913
BASELINE (2005)	536.874 163.640	DPW BM TAG IN N CB VALLEY BLVD 13M(43FT) N/O C/L NR CTR OF BLDG #20747 (GTE) @ LT STD #4275370E	G 4914
BASELINE (2005)	564.118 171.944	DPW BM TAG IN N CB VALLEY BLVD 300MM(1FT) W/O BCR 13M(42.7FT) N/O C/L & 21M(69FT) W/O C/L MORNINGSIDE DR	G 4916
BASELINE (2005)	592.807 180.688	L&BR IN W CB VALLEY BLVD 300MM(1FT) N/O BCR 13M(42.7FT) W/O C/L & 20M(65.5FT) N/O C/L SOMERSET DR (NR S END C. B.)	G 4917

QUAD YEAR	ELEV FOOT/METER	DESCRIPTION	BM NUMBER
BASELINE (2005)	618.144 188.411	DPW BM TAG IN N CB VALLEY BLVD 13M(43FT) N/O C/L & 11.5M(38FT) E/O C/L PROD BENTON RD (NR W END C B)	G 4918
BASELINE (2005)	677.738 206.575	NGS DISC IN W CB VALLEY BLVD 13M(43FT) W/O C/L & 6M(20FT) S/O C/L BRIDGE OVER SAN JOSE CREEK MKD (H 1329 1978)	G 4920
BASELINE (2005)	707.512 215.650	DPW BM TAG IN W CB POMONA BLVD 24M(78.7FT) N/O BCR 10M(33FT) W/O C/L & 41M(135FT) N/O C/L TEMPLE AVE (NR S END C. B.)	G 4921
BASELINE (2005)	727.145 221.634	DPW BM TAG IN E CB POMONA BLVD @ S END C. B. 10M(32.8FT) E/O C/L & 18.5M(61FT) N/O C/L VOYAGE ST	G 4922
BASELINE (2005)	812.548 247.665	DPW BM TAG IN S CB 2ND ST 1M(3.3FT) E/O E END C. B. 7M(23FT) S/O C/L & 530M(0.3MI) E/O C/L HWY 71 2.5M(8.2FT) W/O PP #G782Y	G 4965
BASELINE (2005)	857.705 261.429	DPW BM TAG IN S CB 1M(3.3FT) W/O BCR @ SW COR FIRST ST & PARK AVE (@ F HYD)	G 4966
BASELINE (2005)	859.682 262.032	DPW BM TAG IN E CB NR N END PARKWAY DRAIN 11M(36FT) S/O C/L FIRST ST & 7.5M(24.6FT) E/O C/L MAIN ST	G 4967
BASELINE (2005)	869.208 264.935	DPW BM TAG IN W CB 2.5M(8.2FT) S/O S END RAMP 11M(36FT) S/O C/L FIRST ST & 8.5M(28FT) W/O C/L PALOMARES ST	G 4968
BASELINE (2005)	869.466 265.014	DPW BM TAG IN E CB 1M(3.3FT) S/O S END RAMP 10.5M(34FT) S/O C/L FIRST ST & 8.5M(28FT) W/O C/L PALOMARES ST	G 4969
BASELINE (2005)	878.469 267.758	DPW BM TAG IN S CB 1M(3.3FT) E/O BCR @ SE COR FIRST ST & SAN ANTONIO AVE	G 4970
OTTERBEIN (2005)	631.676 192.535	L&T IN S CB 5M(16.4FT) W/O BCR @ SE COR COLIMA RD & ALLENTON AVE	G 5030
OTTERBEIN (2005)	635.216 193.614	BR DISC IN S CB 300MM(1FT) E/O BCR @ SE COR COLIMA RD & SIERRA PEAK WAY MKD (PAS 4)	G 5031
OTTERBEIN (2005)	512.420 156.186	L&T NR CTR OF C. B. 6.5M(21FT) W/O BCR @ SW COR COLIMA RD & DAWN HAVEN RD	G 5032
OTTERBEIN (2005)	453.866 138.339	DPW BM TAG IN S CB COLIMA RD 13M(43FT) S/O C/L & 17.5M(57FT) W/O C/L PROD STONER CREEK RD	G 5033
OTTERBEIN (2005)	479.818 146.249	CE TAG IN S CB 2M(6.5FT) E/O BCR @ SW COR COLIMA RD & FULLERTON RD	G 5034
OTTERBEIN (2005)	525.663 160.223	L&BR IN N CB 300MM(1FT) E/O BCR @ NE COR COLIMA RD & BANIDA AVE	G 5035
OTTERBEIN (2005)	584.590 178.184	CSBM MON IN E END C. B. @ BCR @ SW COR GOLDEN SPRINGS RD & CALBOURNE DR MKD (BM 44-6A 1975 RE 7078)	G 5036
OTTERBEIN (2005)	587.164 178.968	L&T IN S CB GOLDEN SPRINGS RD 2M(6.5FT) W/O BCR @ SW COR RAPIDVIEW DR	G 5037
OTTERBEIN (2005)	391.493 119.327	L&T IN W CB 1M(3.3FT) S/O BCR @ SW COR STIMSON AVE & LUJON ST	G 5038
OTTERBEIN (2005)	398.225 121.379	CITY OF INDUSTRY BR CAP IN S CB @ C. B. 46M(151FT) E/O C/L AZUSA AVE & 11M(36FT) S/O C/L GALE AVE MKD (G-26)	G 5039

QUAD YEAR	ELEV FOOT/METER	DESCRIPTION	BM NUMBER
OTTERBEIN (2005)	397.843 121.263	DPW BM TAG IN N CB 1M(3.3FT) E/O BCR @ NE COR AZUSA AVE & GALE AVE	G 5040
OTTERBEIN (2005)	382.329 116.534	DPW BM TAG IN S CB 1M(3.3FT) E/O BCR @ SE COR AZUSA AVE & RAILROAD ST	G 5041
OTTERBEIN (2005)	399.167 121.666	DPW BM TAG IN S CB 1M(3.3FT) W/O BCR @ SW COR RAILROAD ST & HATCHER AVE	G 5042
OTTERBEIN (2005)	404.193 123.198	DPW BM TAG IN N CB 1M(3.3FT) W/O BCR @ NW COR ROWLAND ST & RADECKI CT	G 5043
OTTERBEIN (2005)	424.640 129.431	DPW BM TAG IN N CB 1M(3.3FT) E/O BCR @ NE COR ROWLAND ST & AJAX AVE	G 5044
OTTERBEIN (2005)	423.176 128.984	CITY OF INDUSTRY DISK IN S CB 9M(29.5FT) E/O BCR @ SE COR ROWLAND ST & LAWSON ST MKD (BM R-1)	G 5045
OTTERBEIN (2005)	444.842 135.588	RCE TAG #5828 IN W CB 5M(16.4FT) N/O BCR 13M(43FT) N/O & 10M(33FT) W/O C/L INT FULLERTON RD & POMONA (60) FRWY E BOUND OFF RAMP	G 5046
OTTERBEIN (2005)	577.101 175.901	DPW BM TAG IN NW COR OF (ELY MOST) GOLF CART PATH 4M(13FT) N/O C/L EAST RD & 402M(1300FT) E/O HACIENDA BLVD	G 5047
OTTERBEIN (2005)	612.146 186.583	CE TAG IN W CB EAST RD 4M(13FT) S/O BC & 4M(13FT) W/O C/L 63.5M(208FT) S/O C/L DRWY TO HSE #365	G 5048
OTTERBEIN (2005)	735.295 224.119	DPW BM TAG IN E EDGE CONC DR TO HSE #500 EAST RD 3.7M(12FT) S/O C/L & 9.5M(31FT) E/O C/L PROD CHURCHHILL RD (WLY INT)	G 5049
OTTERBEIN (2005)	828.319 252.472	DPW BM TAG IN CONC DRWY TO HSE #1505 EAST RD 3.7M(12FT) N/O C/L & 500MM(1.6FT) E/O W EDGE DRWY	G 5051
OTTERBEIN (2005)	646.939 197.188	DPW BM TAG IN S CB FULLERTON RD 1M(3.3FT) W/O BCR 6M(20FT) S/O C/L & 24.5M(80FT) W/O C/L HARBOR BLVD	G 5052
OTTERBEIN (2005)	623.138 189.933	DPW BM TAG IN E CB HARBOR BLVD 1M(3.3FT) N/O BCR 13M(43FT) E/O C/L & 22M(72FT) N/O C/L PATHFINDER RD	G 5053
OTTERBEIN (2005)	572.689 174.556	L&BR IN W CB 1M(3.3FT) S/O BCR @ SW COR FULLERTON RD & SUNRISE DR	G 5054
OTTERBEIN (2005)	535.659 163.269	DPW BM TAG IN N CB 1M(3.3FT) E/O BCR @ NE COR FULLERTON RD & MESCAL ST	G 5055
OTTERBEIN (2005)	506.958 154.521	DPW BM TAG N CB 1M(1FT) W/O BCR @ NW COR FULLERTON RD & CROSSHAVEN DR	G 5056
OTTERBEIN (2005)	647.776 197.443	DPW BM TAG IN N CB 1M(3.3FT) E/O BCR @ NE COR PATHFINDER RD & NATIVE AVE	G 5057
OTTERBEIN (2005)	635.283 193.635	DPW BM TAG IN S CB 1M(3.3FT) E/O BCR @ SE COR PATHFINDER RD & BUTTONWOOD LN	G 5058
OTTERBEIN (2005)	627.133 191.151	RCE TAG #23956 IN N CB 300MM(1FT) E/O BCR @ NW COR PATHFINDER RD & GALLIO AVE	G 5059

QUAD YEAR	ELEV FOOT/METER	DESCRIPTION	BM NUMBER
OTTERBEIN (2005)	626.618 190.994	DPW BM TAG IN W CB 1M(3.3FT) N/O BCR @ NW COR PATHFINDER RD & GALLIO AVE	G 5060
OTTERBEIN (2005)	615.172 187.505	DPW BM TAG IN S CB BLANDFORD DR 1M(3.3FT) E/O BCR 10M(33FT) S/O C/L & 18M(59FT) E/O C/L PATHFINDER RD	G 5061
OTTERBEIN (2005)	582.182 177.450	DPW BM TAG IN S CB PATHFINDER RD @ BCR SW COR WELLESLEY DR	G 5062
OTTERBEIN (2005)	582.691 177.605	DPW BM TAG IN S CB PATHFINDER RD 1M(3.3FT) E/O BCR @ SE COR WELLESLEY DR	G 5063
OTTERBEIN (2005)	620.366 189.088	DPW BM TAG IN S CB PATHFINDER RD 1M(3.3FT) E/O BCR @ SE COR SONGBIRD LN	G 5064
OTTERBEIN (2005)	621.727 189.503	DPW BM TAG IN N CB PATHFINDER RD 1M(3.3FT) E/O BCR @ NE COR ALEXDALE LN	G 5065
OTTERBEIN (2005)	611.515 186.390	DPW BM TAG IN S CB BALAN RD 1M(3.3FT) E/O BCR @ SE COR ANNADEL AVE	G 5066
OTTERBEIN (2005)	598.508 182.426	DPW BM TAG W CB 1M(3.3FT) N/O BCR @ NW COR BREA CYN CUTOFF RD & REEDVIEW DR	G 5067
OTTERBEIN (2005)	532.435 162.287	CITY OF INDUSTRY DISK IN E END C. B. 21M(69FT) E/O BCR @ SE COR LYCOMING ST & LEMON AVE MKD (C.I. W-12)	G 5068
OTTERBEIN (2005)	879.768 268.154	CE TAG IN N CB CUTOFF CT @ E END C. B. 6M(20FT) N/O C/L & 18M(59FT) W/O C/L BREA CYN CUTOFF RD	G 5070
OTTERBEIN (2005)	826.101 251.796	DPW BM TAG IN S CB BREA CYN CUTOFF RD 10M(33FT) S/O C/L & 370M(0.2MI) S/O PATHFINDER RD (3.3FT N/O N END C. B.)	G 5071
OTTERBEIN (2005)	726.809 221.532	LACO DPW TAG IN E CB DIAMOND BAR BLVD 13M(42.7FT) E/O C/L & 29M(95FT) N/O C/L CROOKED CREEK DR	G 5073
OTTERBEIN (2005)	747.303 227.779	LACO DPW TAG IN W CB DIAMOND BAR BLVD 300MM(1FT) S/O BCR @ NW COR COLD SPRINGS LN	G 5074
OTTERBEIN (2005)	736.983 224.633	DPW BM TAG IN W CB DIAMOND BAR BLVD 1M(3.3FT) N/O BCR @ NW COR FOUNTAIN SPRINGS RD	G 5075
OTTERBEIN (2005)	897.697 273.619	DPW BM TAG IN S CB GRAND AVE 1M(3.3FT) E/O BCR @ SE COR DIAMOND BAR BLVD	G 5076
OTTERBEIN (2005)	898.406 273.835	DPW BM TAG IN E CB DIAMOND BAR BLVD 1M(3.3FT) N/O BCR @ NE COR GRAND AVE	G 5077
OTTERBEIN (2005)	880.154 268.272	L&T IN S CB @ W END C. B. 11M(36FT) E/O BCR @ SE COR STEEP CYN RD & DIAMOND BAR BLVD	G 5078
OTTERBEIN (2005)	879.147 267.965	L&T IN N CB @ BCR @ NE COR DIAMOND BAR BLVD & STEEP CYN RD	G 5079
OTTERBEIN (2005)	840.700 256.246	L&T IN CB RET 3M(10FT) S/O BCR @ NW COR DIAMOND BAR BLVD & GOLDRUSH DR	G 5080
OTTERBEIN (2005)	714.264 217.708	L&T IN E CB DIAMOND BAR BLVD 300MM(1FT) N/O BCR @ NE COR ON-OFF RAMP N SIDE 60 FRWY	G 5081

QUAD YEAR	ELEV FOOT/METER	DESCRIPTION	BM NUMBER
OTTERBEIN (2005)	716.474 218.382	LACO DPW TAG IN E CB DIAMOND BAR BLVD @ BLDG #724 @ ST LIGHT	G 5082
OTTERBEIN (2005)	1,111.780 338.872	L&BR IN S CB 600MM(2FT) E/O BCR @ SE COR GRAND AVE & COUNTRY VIEW DR	G 5083
OTTERBEIN (2005)	1,031.079 314.274	L&BR IN S CB 2.5M(8.2FT) E/O BCR @ SE COR GRAND AVE & LONGVIEW DR	G 5084
OTTERBEIN (2005)	641.169 195.429	CITY OF INDUSTRY DISC @ SW COR BRIDGE OVER RR TRACKS 2M(6.5FT) W/O CF 16M(52.5FT) W/O C/L GRAND AVE & 1K(0.6MI) S/O VALLEY BLVD MKD (C.I. GR-1)	G 5087
OTTERBEIN (2005)	641.798 195.621	DPW BM TAG IN W CB 10.5M(34FT) N/O N ABUT BRIDGE OVER RR TRACKS 14M(46FT) W/O C/L GRAND AVE & 971M(0.6MI) S/O VALLEY BLVD (@ LT STD)	G 5088
OTTERBEIN (2005)	891.897 271.851	DPW BM TAG IN N CB GRAND AVE 1M(3.3FT) E/O BCR @ NE COR CAHILL PL	G 5089
OTTERBEIN (2005)	637.897 194.432	L&BR IN E CB @ SE COR BRIDGE OVER RR TRACKS 14M(46FT) E/O C/L GRAND AVE & 680M(0.4MI) S/O C/L VALLEY BLVD	G 5090
OTTERBEIN (2005)	862.522 262.897	L&BR IN N CB VILLAGE LOOP RD 10M(33FT) N/O C/L ON C/L PROD PHILLIPS RANCH RD	G 5091
OTTERBEIN (2005)	833.338 254.002	DPW BM TAG IN W CB 300MM(1FT) S/O BCR @ SW COR RIO RANCHO RD & COUNTRY MILE RD	G 5094
OTTERBEIN (2005)	833.012 253.903	RCE TAG #27366 IN E CB 300MM(1FT) N/O BCR @ SE COR RIO RANCHO RD & COUNTRY MILE RD	G 5095
OTTERBEIN (2005)	822.202 250.608	MWD BR DISC IN S CB RIO RANCHO RD 13M(43FT) S/O C/L & 18M(59FT) W/O C/L PROD MEADOW VIEW DR MKD (P.O.T. STA 460+50.28)	G 5096
OTTERBEIN (2005)	822.587 250.725	DPW BM TAG IN E CB 600MM(2FT) N/O BCR @ NE COR RIO RANCHO RD & MEADOW VIEW DR	G 5097
OTTERBEIN (2005)	804.288 245.148	BR DISC IN S CB RIO RANCHO RD 17M(55.8FT) E/O BCR & 36M(118FT) E/O C/L PROD LONE RIDGE RD MKD (R.P. TO P.I.)	G 5098
OTTERBEIN (2005)	804.215 245.125	BR DISC IN N CB RIO RANCHO RD @ W END C. B. 14M(46FT) N/O C/L & 29M(95FT) E/O C/L LONE RIDGE RD MKD (YLF 109 1994)	G 5099
OTTERBEIN (2005)	802.765 244.684	L&BR IN S CB RIO RANCHO RD 1M(3.3FT) E/O BCR @ SE COR AUTO CTR DR	G 5100
OTTERBEIN (2005)	777.865 237.094	L&BR IN S CB 5M(16.4FT) W/O BCR @ SW COR RIO RANCHO RD & PARK AVE	G 5101
OTTERBEIN (2005)	778.320 237.233	L&BR IN E CB 11M(36FT) N/O BCR @ NE COR RIO RANCHO RD & PARK AVE	G 5102
OTTERBEIN (2005)	786.434 239.706	FC TAG IN W CB 4M(13FT) N/O BCR @ NW COR PARK AVE & LEXINGTON AVE	G 5103

QUAD YEAR	ELEV FOOT/METER	DESCRIPTION	BM NUMBER
OTTERBEIN (2005)	784.307 239.057	BR DISK IN S CB 2M(6.5FT) W/O BCR @ SW COR WHITE AVE & LEXINGTON AVE	G 5104
OTTERBEIN (2005)	784.676 239.170	PK NAIL IN N CB @ BCR NW COR LEXINGTON AVE & WHITE AVE	G 5105
OTTERBEIN (2005)	795.820 242.567	PK NAIL IN E CB 600MM(2FT) N/O BCR @ NE COR WHITE AVE & FRANKLIN AVE	G 5106
OTTERBEIN (2005)	804.571 245.234	PK NAIL IN S CB 1M(3.3FT) W/O BCR @ SW COR WHITE AVE & PHILLIPS BLVD	G 5107
OTTERBEIN (2005)	805.410 245.490	BR DISC IN W CB @ N END C. B. 12M(39.4FT) N/O BCR @ NW COR WHITE AVE & PHILLIPS BLVD MKD (YLF 107 1994)	G 5108
OTTERBEIN (2005)	817.485 249.170	PK NAIL IN S CB @ BCR @ SW COR WHITE AVE & GRAND AVE	G 5109
OTTERBEIN (2005)	831.842 253.546	BR DISC IN E CB 9M(29.5FT) N/O BCR @ NE COR WHITE AVE & NINTH ST	G 5110
OTTERBEIN (2005)	829.590 252.860	SPK IN S CB 1.5M(5FT) W/O BCR @ SW COR WHITE AVE & NINTH ST	G 5111
OTTERBEIN (2005)	840.349 256.139	PK NAIL IN N CB 7M(23FT) W/O BCR @ NW COR WHITE AVE & MISSION BLVD	G 5112
OTTERBEIN (2005)	626.102 190.836	LACO BM TAG IN S CB 1M(3.3FT) W/O BCR @ SW COR COLIMA RD & ALLENTON AVE	G 5238
OTTERBEIN (2005)	609.911 185.901	LACO BM TAG IN S CB @ LT STD #2220796E 13M(43FT) S/O C/L COLIMA RD & 350M(0.2MI) E/O C/L STIMSON AVE	G 5239
OTTERBEIN (2005)	459.869 140.168	LACO BM TAG IN E CB 1M(3.3FT) S/O BCR @ SE COR AZUSA AVE & COLIMA RD	G 5240
OTTERBEIN (2005)	475.490 144.930	L&T IN S CB 2M(6.5FT) W/O BCR @ SE COR COLIMA RD & FULLERTON RD	G 5241
OTTERBEIN (2005)	488.905 149.019	CITY OF INDUSTRY DISK IN N CB 11M(36FT) W/O BCR @ NW COR COLIMA RD & NOGALES ST MKD (1-028 1997)	G 5242
OTTERBEIN (2005)	407.966 124.348	RE TAG #5406 IN E CB FLAMSTEAD DR 17M(56FT) S/O BCR 5.5M(18FT) E/O C/L & 32M(105FT) S/O C/L WEDGEWORTH DR	G 5243
OTTERBEIN (2005)	408.311 124.454	LACO BM TAG IN W CB GLENELDER AVE 1M(3.3FT) N/O BCR 5.5M(18FT) W/O C/L & 15M(49FT) N/O C/L WEDGEWORTH DR	G 5244
OTTERBEIN (2005)	433.305 132.072	LACO BM TAG IN S CB 1M(3.3FT) W/O BCR @ SW COR WEDGEWORTH DR & BORK AVE	G 5245
OTTERBEIN (2005)	428.036 130.466	LACO BM TAG IN W CB 1M(3.3FT) N/O BCR @ NW COR WEDGEWORTH DR & COUNTRYWOOD AVE	G 5246
OTTERBEIN (2005)	430.163 131.114	LACO BM TAG IN W CB 1M(3.3FT) S/O BCR @ SW COR WEDGEWORTH DR & COUNTRYWOOD AVE	G 5247
OTTERBEIN (2005)	442.780 134.960	LACO BM TAG IN W CB 3M(9.8FT) S/O BCR @ SW COR COUNTRYWOOD AVE & FLOWER GLEN DR	G 5248

QUAD YEAR	ELEV FOOT/METER	DESCRIPTION	BM NUMBER
OTTERBEIN (2005)	471.608 143.747	LACO BM TAG IN E CB 1M(3.3FT) S/O BCR @ SE COR COUNTRYWOOD AVE & PEPPERBROOK WY	G 5249
OTTERBEIN (2005)	382.373 116.548	LACO BM TAG IN E CB 2M(6.5FT) E/O BCR @ NE COR RAILROAD ST & AZUSA AVE	G 5250
OTTERBEIN (2005)	390.823 119.123	LACO BM TAG IN N CB 5M(16.4FT) W/O C/L DRWY TO BLDG #17355 RAILROAD ST 7.5M(24.5FT) N/O C/L & 335M(1100FT) W/O C/L HATCHER ST	G 5251
OTTERBEIN (2005)	427.536 130.313	LACO BM TAG IN N CB RAILROAD ST 7M(23FT) N/O C/L @ BLDG #18111 (3.3FT W/O F HYD)	G 5252
OTTERBEIN (2005)	749.969 228.591	LACO BM TAG IN S CB EAST RD 6M(20FT) S/O C/L & 14M(46FT) W/O C/L DRWY TO HSE #1276	G 5253
OTTERBEIN (2005)	793.557 241.877	50MM(2IN) IP W/LACO BM TAG 5M(16.4FT) S/O FULLERTON RD & 330M(0.2MI) E/O C/L INT WITH EAST RD MKR PADDLE 600MM(2FT) SE/O MON	G 5254
OTTERBEIN (2005)	505.682 154.132	LACO BM TAG IN W CB 1M(3.3FT) S/O BCR @ SW COR FULLERTON RD & CROSSHAVEN DR	G 5255
OTTERBEIN (2005)	556.609 169.655	LACO BM TAG IN S CB 20M(65.5FT) W/O BCR @ SW COR BREA CYN CUTOFF & FAIRWAY DR	G 5256
OTTERBEIN (2005)	487.036 148.449	FC DISK @ SW COR BRIDGE OVER SAN JOSE CREEK 28M(92FT) W/O C/L FAIRWAY DR & 24M(79FT) N/O C/L SAN JOSE AVE MKD (BM 102-00770 1968)	G 5257
OTTERBEIN (2005)	519.648 158.389	L&T IN W CB 300MM(1FT) N/O BCR @ NW COR OTTERBEIN AVE & PILARIO ST	G 5258
OTTERBEIN (2005)	587.342 179.022	L&T IN S CB 300MM(1FT) E/O BCR @ SE COR GOLDEN SPRINGS DR & GONA CT	G 5259
OTTERBEIN (2005)	532.866 162.418	RCE TAG #12559 IN W CB LEMON AVE 13M(43FT) W/O C/L & 14.5M(47.6FT) S/O C/L PROD LYCOMONG ST	G 5260
OTTERBEIN (2005)	629.196 191.780	LACO BM TAG IN W CB FULLERTON RD 14M(46FT) W/O C/L & 7M(23FT) S/O C/L PROD PATHFINDER RD	G 5261
BASELINE (2005)	481.527 146.770	CITY OF INDUSTRY DISK IN N CB 8M(26.2FT) W/O BCR @ NW COR VALLEY BLVD & CAMINO DE TEDORO (FAIRWAY DR TO S) MKD (GPS CONTROL 1-029 1997)	G 5262
OTTERBEIN (2005)	871.203 265.543	LACO BM TAG IN W CB DIAMOND BAR BLVD 1M(3.3FT) N/O BCR @ NW COR DIAMONDATE HOMES ENTRY ST	G 5263
OTTERBEIN (2005)	870.614 265.364	LACO BM TAG IN W CB DIAMOND BAR BLVD 1M(3.3FT) S/O BCR @ SW COR DIAMONDATE HOMES ENTRY ST	G 5264
OTTERBEIN (2005)	799.582 243.713	L&T IN W CB DIAMOND BAR BLVD 600MM(2FT) S/O BCR @ SW COR SILVER HAWK DR	G 5265
OTTERBEIN (2005)	747.358 227.795	LACO BM TAG IN E CB DIAMOND BAR BLVD 500MM(1.6FT) S/O BCR @ NE COR SHADOW CYN DR	G 5266

QUAD YEAR	ELEV FOOT/METER	DESCRIPTION	BM NUMBER
OTTERBEIN (2005)	740.286 225.640	L&T IN E CB DIAMOND BAR BLVD 300MM(1FT) N/O BCR @ SE COR SUGAR PINE PL	G 5267
OTTERBEIN (2005)	724.080 220.700	L&T IN W CB DIAMOND BAR BL IN (RET) 600MM(2FT) S/O BCR @ NW COR CROOKED CYN CREEK DR	G 5268
OTTERBEIN (2005)	721.319 219.859	L&T IN N CB DIAMOND BAR BL 3.4M(11FT) E/O BCR (IN RET) @ NW COR BREA CYN CUTOFF RD	G 5269
OTTERBEIN (2005)	726.073 221.308	LACO BM TAG IN E CB BREA CYN CUTOFF RD 600MM(2FT) N/O BCR @ NE COR BICKFORD DR	G 5270
OTTERBEIN (2005)	1,101.604 335.770	LACO BM TAG IN N CB GRAND AVE @ LT STD #2313687E 13M(43FT) N/O C/L & 213M(700FT) W/O LONGVIEW DR	G 5273
OTTERBEIN (2005)	893.458 272.327	L&BN IN E CB 300MM(1FT) S/O BCR @ NE COR DIAMOND BAR BLVD & CLEAR CREEK CYN DR	G 5274
OTTERBEIN (2005)	807.484 246.122	LACO BM TAG IN W CB DIAMOND BAR BLVD 13M(43FT) W/O C/L & 320M(1050FT) N/O HIGHLAND VALLEY RD @ LT STD #4297287E	G 5275
OTTERBEIN (2005)	1,022.058 311.524	L&T IN N CB 300MM(1FT) W/O BCR @ NW COR AVD RANCHEROS & RANCHO NAVATO	G 5276
OTTERBEIN (2005)	975.674 297.386	LACO BM TAG IN S CB SANTA CLARA DR 13.5M(44.3FT) E/O C/L DRWY TO COUNTRY CROSSING PARK	G 5277
OTTERBEIN (2005)	871.878 265.749	LACO DPW BM TAG IN N CB VILLAGE LOOP RD 1M(3.3FT) W/O BCR @ NW COR RUSTIC GLEN DR (NR E END C. B.)	G 5278
OTTERBEIN (2005)	860.807 262.375	BR DISK IN E CB PHILIPS RANCH RD 6M(19.7FT) S/O BCR @ SE COR RIO RANCH RD MKD (YLF 110 1994) @ S END C. B.	G 5279
BASELINE (2005)	877.277 267.395	L&T W CB 300MM(1FT) S/O BCR @ SW COR 1ST ST & SAN ANTONIO AV 10M(32.8FT) W/O & 15M(49.2FT) S/O C/L INT	G 5442
OTTERBEIN (2005)	882.338 268.937	L&DPW BM TAG S CB 1ST ST 67M(219.8FT) W/O C/L SAN ANTONIO AV & 7M(23FT) S/O 1ST ST	G 5443
BASELINE (2005)	883.551 269.307	L&DPW BM TAG N CB 1ST ST 67M(219.8FT) W/O C/L SAN ANTONIO AV & 7M(23FT) N/O 1ST ST	G 5444
BASELINE (2005)	609.193 185.683	L&LACO BM TAG @ NW COR GRAND AV & VALLEY BL 18.3M(60FT) N/O & 38.1M(125FT) W/O C/L INT 0.3M(1FT) W/O BCR	G 5449
BASELINE (2005)	611.867 186.498	L&LACO BM TAG @ NW COR GRAND AV & VALLEY BL 41.2M(135FT) N/O & 18.3M(60FT) W/O C/L INT @ N END C.B.	G 5450
BASELINE (2005)	707.251 215.571	L&LACO BM TAG 300MM(1FT) E/O BCR @ NE COR POMONA BL & TEMPLE AV 9.8M(32FT) N/O & 22.9M(75FT) E/O C/L INT	G 5451
BASELINE (2005)	653.996 199.339	L&DPW BM TAG E CB VALLEY BL 12.2M(40FT) E/O C/L & 300MM(1FT) S/O SLY TOP X DRIVE TO BLDG #4200	G 5452
BASELINE (2005)	382.306 116.527	L&T IN E CB 600MM(2FT) S/O BCR @ NE COR AZUSA WAY & VALLEY BL	G 5464

QUAD YEAR	ELEV FOOT/METER	DESCRIPTION	BM NUMBER
BASELINE (2005)	393.014 119.791	L&LS#2977 TAG @ B/W @ BCR @ NW COR HAMBLEDON AV & VALLEY BL 13.7M(45FT) N/O & 12.5M(41FT) W/O C/L INT	G 5465
BASELINE (2005)	393.514 119.943	L&T @ B/W @ BCR @ NW COR HAMBLEDON AV & VALLEY BL 19.8M(65FT) N/O & 10.4M(34FT) W/O C/L INT	G 5466
BASELINE (2005)	413.430 126.014	CITY OF INDUSTRY BR MON @ B/W @ BCR @ SW COR VALLEY BL & FULLERTON RD 15.2M(50FT) S/O & 18.9M(62FT) W/O C/L INT MKD (CITY OF INDUSTRY 1-025 1997 GPS CONTROL)	G 5468
BASELINE (2005)	460.507 140.363	L & BM TAG IN N CB 300MM(1FT) W/O BCR @ NW COR VALLEY BL & NOGALES ST 15.2M(50FT) N/O & 16.8M(55FT) W/O C/L INT	G 5469
BASELINE (2005)	461.112 140.547	L&BM TAG IN N CB 300MM(1FT) E/O BCR @ NE COR VALLEY BL & NOGALES ST 15.2M(50FT) N/O & 16.8M(55FT) E/O C/L INT	G 5470
BASELINE (2005)	545.004 166.118	L&TAG IN N CB 2.1M(7FT) E/O BCR @ NW COR VALLEY BL & PIERRE RD 13.7M(45FT) N/O & 19.8M(65FT) W/O C/L INT	G 5471
BASELINE (2005)	546.417 166.548	L&BM TAG IN N CB 300MM(1FT) E/O BCR @ NE COR VALLEY BL & PIERRE RD 13.7M(45FT)N/O & 19.8M(65FT) E/O C/L INT	G 5472
BASELINE (2005)	900.515 274.478	L&BM TAG @ SW COR HACIENDA BL & SKYLINE DR (W) ON BASE OF TRAFFIC SIGNAL	G 5537
BASELINE (2005)	747.447 227.823	L&BM TAG @ NE COR HACIENDA BL & CANADA SOMBRE RD ON SE COR CONC STRUCTURE W/MH	G 5538
BASELINE (2005)	668.820 203.857	L&BM TAG @ NE COR HACIENDA BL & REPOSADO DR IN CONC HDW	G 5539
BASELINE (2005)	599.513 182.732	L&BM TAG IN CB 1.5M(5FT) W/O BCR OF EXIT TO "THE PARK" +/-61M(200FT) S/O & 12.2M(40FT) W/O C/L INT HACIENDA BL & ENCANADA DR	G 5540
BASELINE (2005)	593.400 180.869	L&BM TAG ON NW COR OF CONC STRUCTURE +/-76M(250FT) & 6.1M(20FT) W/O C/L INT HACIENDA BL & ENCANADA DR +/-3M(10FT) N/O SPEED CONTROL BOARD IN FRONT OF PARK	G 5541
BASELINE (2005)	498.777 152.028	L&LS#6921 TAG @ SE COR HACIENDA BL & WEST RD @ BASE OF TRAFFIC SIGNAL	G 5542
BASELINE (2005)	449.048 136.870	L&CO ENG TAG +/-6.1M(20FT) N/O BCR @ NE COR HANCIENDA BL & ESEVERRI LN	G 5543
BASELINE (2005)	432.379 131.790	L&T ON NE COR OF E CB TO SERVICE RD ISLAND OF HACIENDA BL & JANINE DR 1.2M(4FT) N/O BCR	G 5544
BASELINE (2005)	378.019 115.221	L&DPW TAG IN E CB 300MM(1FT) N/O BCR @ NE COR HACIENDA BL & LUJON ST	G 5545
BASELINE (2005)	363.440 110.777	L&DPW TAG IN W CB 3M(10FT) S/O C/L PROD SIGMAN ST ON HACIENDA BL	G 5546
BASELINE (2005)	363.002 110.643	L&N IN W CB 7.6M(25FT) N/O C/L PROD SIGMAN ST ON HACIENDA BL	G 5547
OTTERBEIN (2005)	833.715 254.117	L&DPW BM TAG @ NW COR CONC DR TO HSE#2150 FULLERTON RD (EAST OF EAST RD)	G 5551

QUAD YEAR	ELEV FOOT/METER	DESCRIPTION	BM NUMBER
OTTERBEIN (2005)	732.731 223.337	L&DPW BM TAG @ SW COR CONC DR TO HSE#1001 EAST RD @ PAPAYA DR	G 5552
OTTERBEIN (2005)	733.649 223.617	L&DPW BM TAG @ E END CB TO ENTRANCE TO HACIENDA GOLF CLUB ON EAST RD	G 5553
OTTERBEIN (2005)	430.081 131.089	BRASS DISK IN N CB 300MM(1FT) W/O BCR ON NW COR FULLERTON RD & RAILROAD ST	G 5554
OTTERBEIN (2005)	743.124 226.505	L&DPW TAG IN E CB 300MM(1FT) S/O BCR @ SE COR GRAND AV & GOLDEN SPRINGS DR	G 5555
OTTERBEIN (2005)	740.613 225.740	L&DPW TAG IN S CB 300MM(1FT)E/O ECR @ SE COR GRAND AV & GOLDEN SPRINGS DR	G 5556
OTTERBEIN (2005)	733.684 223.628	L&DPW TAG IN E CB GRAND AV & 483M(1584FT) N/O C/L OLD BREA CYN RD (OPP CONC HDWL)	G 5557
OTTERBEIN (2005)	677.588 206.529	L&LS#5490 TAG IN E CB GRAND AV & 6.1M(20FT) S/O C/L BAKER PKWY	G 5558
OTTERBEIN (2005)	672.364 204.937	L&LS#5490 TAG IN E CB GRAND AV & 15.2M(50FT) N/O BAKER PKWY	G 5559
OTTERBEIN (2005)	527.466 160.772	L&DPW TAG IN W CB 300MM(1FT) S/O ECR @ SW COR OTTERBEIN AV & KILLIAN AV	G 5560