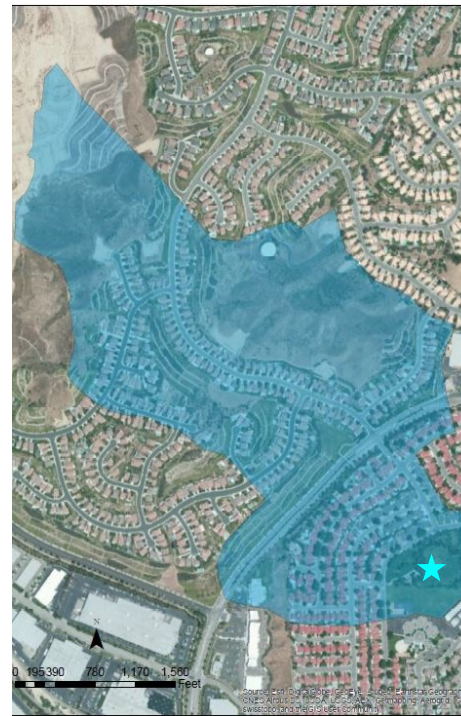
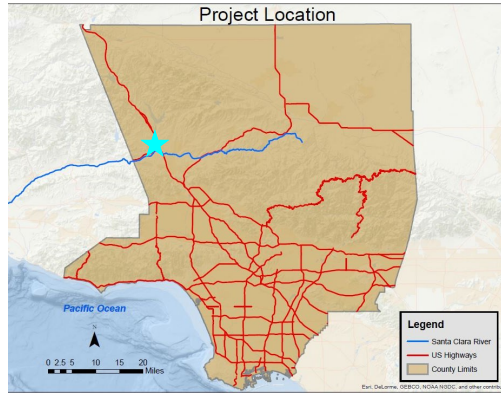
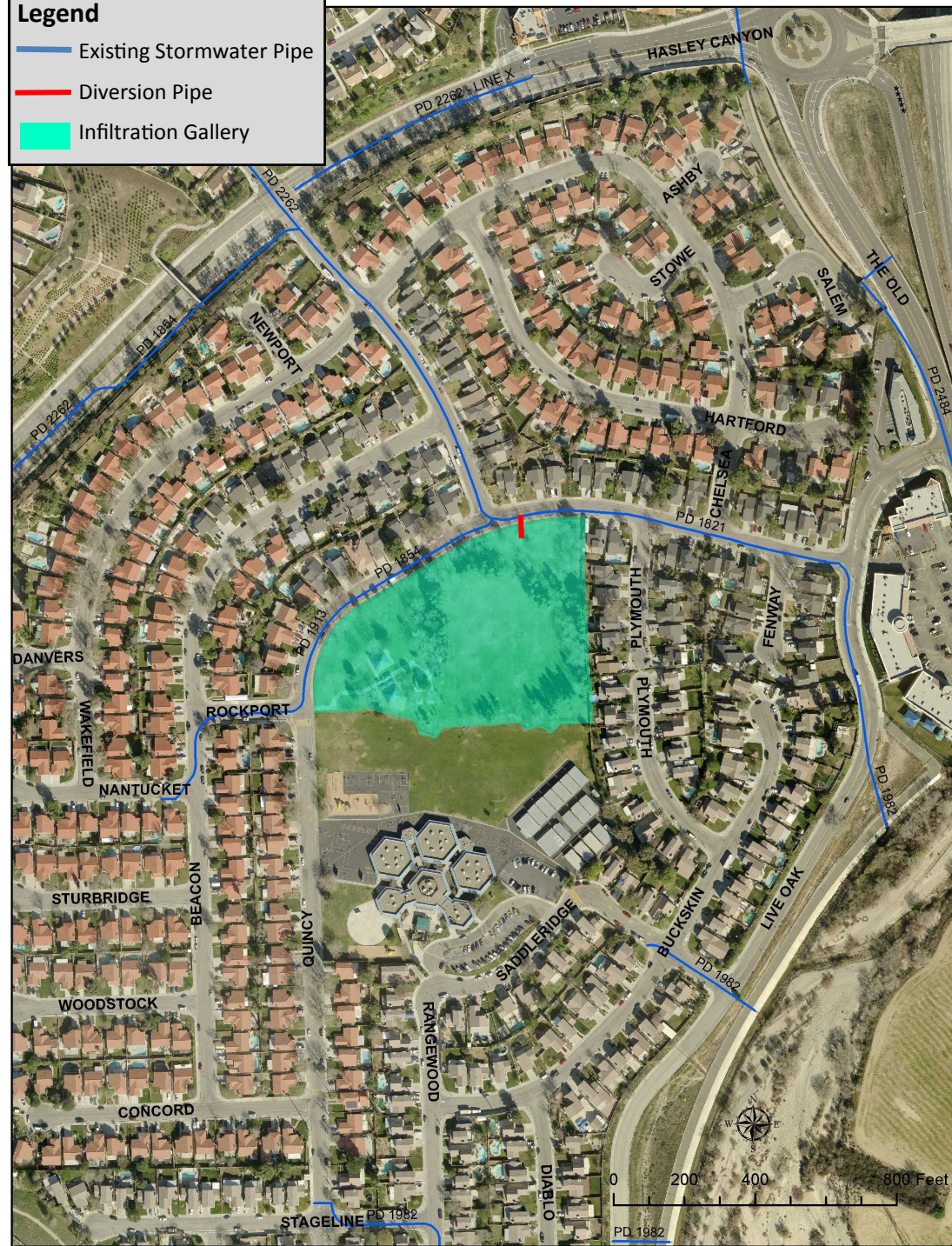
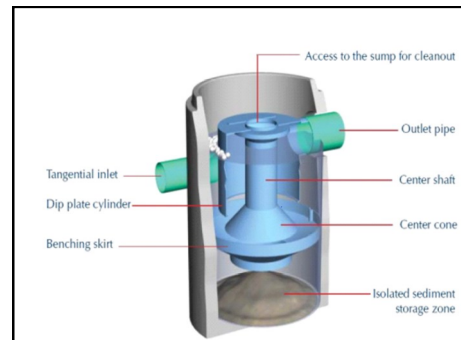


Legend

- Existing Stormwater Pipe
- Diversion Pipe
- Infiltration Gallery



Infiltration Gallery



Hydrodynamic Separator

Site Location		Drainage Area Characteristics	
Watershed	Upper Santa Clara River	Drainage Area	187 acres
EWMP Group	Upper Santa Clara River	Drainage Area Jurisdiction	Unincorporated County
Street Address	28700 West Quincy Street Castaic, CA 91384	Total Impervious	30%
Landowner	County of Los Angeles	Runoff Capture Target	85th Percentile Storm
Groundwater Basin	N/A	Infiltration Rate	Hydrological Soil Group B 0.5-1.0 in/hr

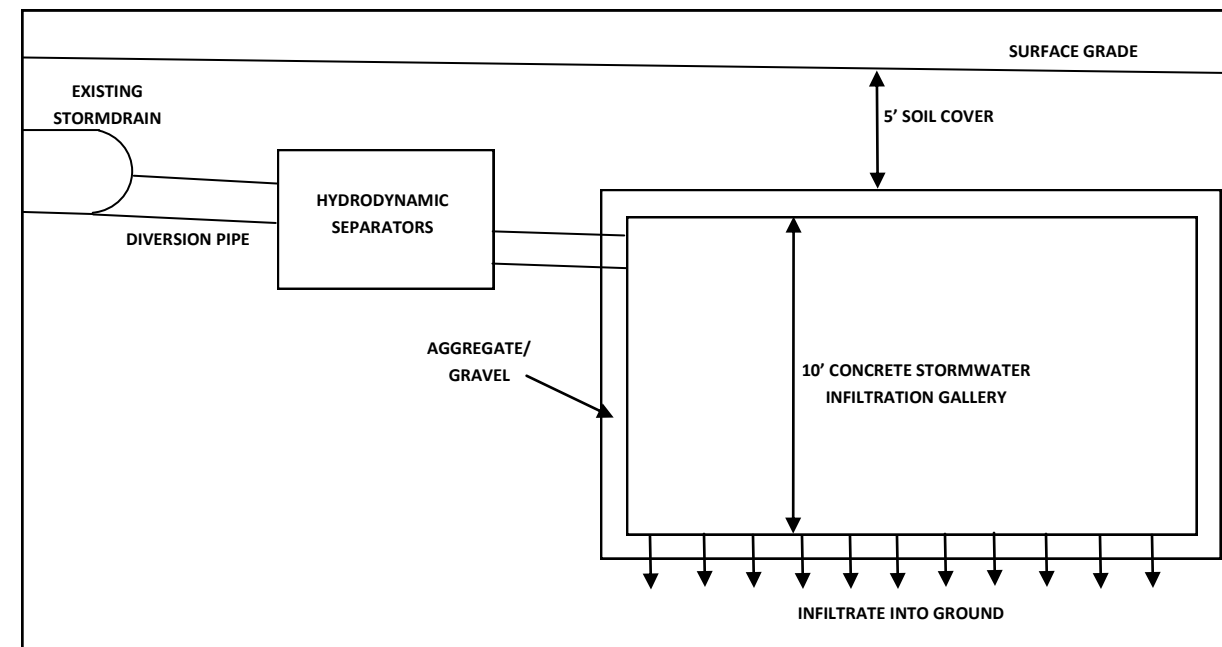
Existing Site Description: Hasley Canyon Park is located in the Castaic/Val Verde community of Supervisorial District 5. The park is near stormdrain PD 1854, PD 1913, PD 1821, PD 2262, which discharges into Castaic Creek and eventually Santa Clara River Reach 5. Currently the park provides a children's playground and an open grass field.

Infiltration Gallery	
Quantity	1 units
Detention Volume (Total)	9.9 ac-ft (431,244 ft ³)
BMP Footprint (Total)	3.3 acres (143,748 ft ²)
BMP Depth	10 ft (plus 5 ft cover)
Pre-treatment	Hydrodynamic Separator

Proposed Retrofits Description: The proposed project entails the construction of a diversion from existing storm drains to an underground infiltration gallery at Hasley Canyon Park. The project will capture the 85th percentile storm and provide infiltration capacity through the gallery below the park open space. Street flows will be treated through installation of green street bio-swales along Quincy Street. The project will also include hydrodynamic separators for pretreatment, flow meters to determine the diversion rate, and monitoring wells for an effectiveness study.

Multi-Benefit Description: 1) Recreation: The recreational use will be maintained. 2) Groundwater Recharge: The project will provide groundwater recharge through the underground infiltration gallery. Upon completion of the construction, infiltration quantities will be monitored. 3) Water Quality: A short-term monitoring program will be conducted to verify the assumptions made in the EWMP. 4) The project will incorporate outreach signage in the community center and the park to educate the community on the benefits of the project.

Hasley Canyon Park Diversion Profile



Schedule

PDC (30% Design included)	December 2015
Board Letter	June 2016
Final Design & CEQA	June 2018
Award Contract	December 2018
Construction Closeout	June 2019
Effectiveness Monitoring	July 2019

Preliminary Cost Estimate

PDC (30% Design included)	\$57,000
Project Management (PMD Preferred)	\$160,000
Design (Design Preferred)	\$124,000
CEQA (PDD Preferred)	\$106,000
Construction	\$1,063,000
Total	\$1,510,000
Annual Maintenance & Monitoring	\$104,000

