



## SOURCES OF WATER

During 2023, approximately 14 percent of the water served by the District was treated surface water and the remaining 86 percent was groundwater extracted from District wells. The District purchases its treated surface water from the Antelope Valley-East Kern Water Agency (AVEK). AVEK gets its water from the Sacramento River/San Joaquin Delta via the State Water Project.

The water from AVEK is treated at their Eastside Water Treatment Plant. The treatment plant receives water by gravity from the State Water Project. Screening and metering are provided at the head of the plant, followed by treatment, chemical addition, flash mixing, tapered energy flocculation, clarification utilizing traveling bridges for sediment removal, and dual media filters. Chlorine is added during the final step to keep the water safe as it travels to your tap. The plant can produce 10 million gallons per day, enough to serve the needs of 44,000 people. The District groundwater is also disinfected with chlorine for the same reason.

The State Water Resources Control Board updated the source water assessment in June 2022 for the State Water Project, AVEK's water source. The assessment evaluates the vulnerability of water sources to contamination and helps determine whether more protective measures are needed. Water supplies from the Sacramento-San Joaquin River Delta are most vulnerable to contamination from municipal, industrial, and agricultural activities. Also influencing the quality of water pumped from the Delta is the impact of the estuarial nature of the Delta and the naturally occurring salt-water intrusion which is dependent to a large extent on the inflow from the contributing rivers. A copy of the complete assessment can be obtained by contacting AVEK at (661) 943-3201.

In 1996, the Environmental Protection Agency (EPA) required states drinking water program regulators that a onetime Source Water Assessment be completed for existing wells. An assessment of the District groundwater wells was completed in November 2008. The wells in the Pearblossom, Littlerock and Sun Village areas are considered vulnerable to various contaminating activities including the following: known contaminant plumes, utility maintenance areas, transportation corridors, above ground storage tanks, junk/scrap/salvage yards and various agriculture activities. A copy of the complete assessment may be viewed at: State Water Resources Control Board, Division of Drinking Water, Los Angeles Office, 500 North Central Avenue, Suite 500, Glendale CA 91203, or by phone at (818) 551-2004.



Field Service Workers, Customer Service Representatives and Engineers work together to provide customers with safe drinking water.

## TO OUR CUSTOMERS

Each year, the Los Angeles County Waterworks Districts (District) provides this report to inform you, our customers, about the quality of the water you drink. We are proud to report that in 2023, your water met or surpassed all health-based drinking water standards.

In order to ensure that tap water is safe to drink, the U.S. Environmental Protection Agency (USEPA) and the State Water Resources Control Board (State Board) prescribe regulations that limit the amount of certain contaminants in water provided by public water systems. State Board regulations also establish limits for contaminants in bottled water that provide the same protection for public health.

We welcome your thoughts and suggestions to improve our service and delivery of the earth's most precious resource. Please visit our website, [www.lacwaterworks.org](http://www.lacwaterworks.org), or attend our Board meetings, held every Tuesday at the Kenneth Hahn Hall of Administration in Los Angeles.

Thank you for taking the time to read our annual water quality report. We look forward to another year of providing you with safe, reliable water.

Este reporte contiene información importante sobre la calidad de su agua potable durante el año civil 2023. Si usted no comprende esta información, por favor pida a alguien que se la traduzca o comuníquese con Lisset Cardenas al teléfono (626) 300-3384.

## PUBLIC PARTICIPATION AND CONTACT INFORMATION

The regular meetings of the Los Angeles County Board of Supervisors are held every Tuesday at 9:30 a.m. in the Board's Hearing Room located 500 West Temple Street, Room 381B, Kenneth Hahn Hall of Administration in Los Angeles. On Tuesdays following a Monday holiday, the meetings begin at 1:00 p.m.

For questions or comments regarding water quality or this report, please contact Mr. Hatem Ben Miled at (626) 300-4679. To view this report on the internet, please visit our website at [www.lacwaterworks.org](http://www.lacwaterworks.org).

# Waterworks District No. 40, Antelope Valley, Regions 24, 27 & 33



## ANNUAL WATER QUALITY REPORT

Water testing performed in 2023



# PROTECTING OUR WATER FROM CROSS CONNECTIONS

## Understanding Cross-Connections and Backflow

Cross-connections are points where the potable water supply is connected to a non-potable source. Backflow occurs when water flows in the opposite direction, which can lead to contamination of drinking water. This can happen due to backsiphonage or backpressure.

## Examples of Backflow Contamination

One common example is when low pressure in the water system, such as from a broken hydrant, draws contaminated water back into the public water system. This can introduce harmful substances into our drinking water supply.

## Importance of Backflow Prevention Devices

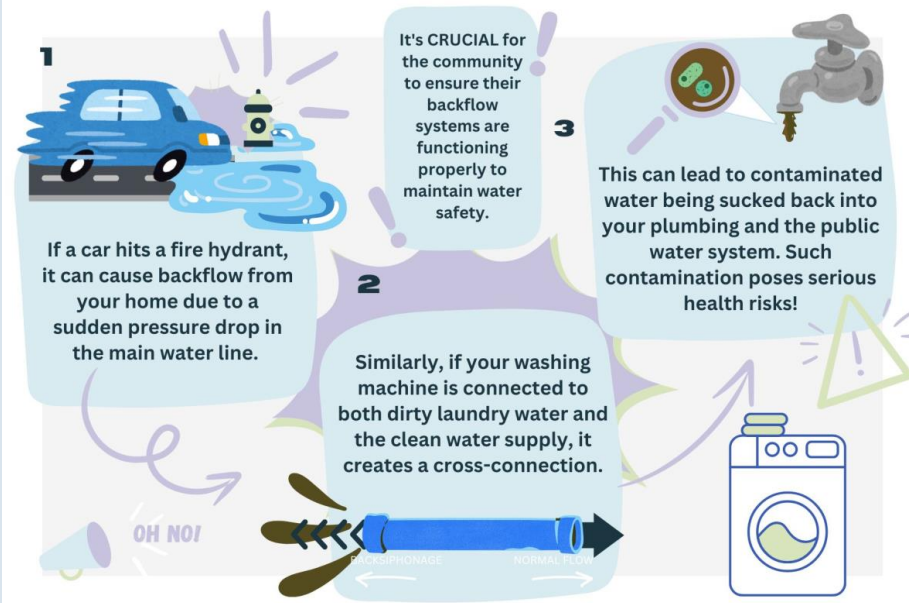
To protect our water supply, all new connections undergo a water use survey to determine if backflow prevention devices are needed. These devices must be tested yearly to ensure they are functioning correctly. If you are unsure whether your device is in compliance, please contact us for assistance.

## Check Your Property

Not all residences have cross-connection valve protection devices. To determine if your property has a device that requires testing, please contact our email hotline: [backflow@dpw.lacounty.gov](mailto:backflow@dpw.lacounty.gov).

## Contact Us

For more information on backflow prevention and to ensure the safety of our water supply, reach out to the Los Angeles County Waterworks Department. Together, we can safeguard the water systems that serve our communities.



# DRINKING WATER & YOUR HEALTH

Drinking water, including bottled water, may reasonably be expected to contain at least small amounts of some contaminants. The presence of contaminants does not necessarily indicate that water poses a health risk. More information about contaminants and potential health effects can be obtained by calling the U.S. Environmental Protection Agency's (USEPA) Safe Drinking Water Hotline (1-800-426-4791).

The sources of drinking water (both tap water and bottled water) include rivers, lakes, streams, ponds, reservoirs, springs, and wells. As water travels over the surface of the land or through the ground, it dissolves naturally-occurring minerals and, in some cases, radioactive material, and can pick up substances resulting from the presence of animals or from human activity.

Contaminants that may be present in source water include:

- Microbial contaminants, such as viruses and bacteria, that may come from sewage treatment plants, septic systems, agricultural livestock operations, and wildlife.
- Inorganic contaminants, such as salts and metals, that can be naturally-occurring or result from urban stormwater runoff, industrial or domestic wastewater discharges, oil and gas production, mining, or farming.
- Pesticides and herbicides, that may come from a variety of sources such as agriculture, urban stormwater runoff, and residential uses.
- Organic chemical contaminants, including synthetic and volatile organic chemicals, that are by-products of industrial processes and petroleum production, and can also come from gas stations, urban stormwater runoff, agricultural application, and septic systems.
- Radioactive contaminants, that can be naturally-occurring or be the result of oil and gas production and mining activities.

Some people may be more vulnerable to contaminants in drinking water than the general population. Immuno-compromised persons such as persons with cancer undergoing chemotherapy, persons who have undergone organ transplants, people with HIV/AIDS or other immune system disorders, some elderly, and infants can be particularly at risk from infections. These people should seek advice about drinking water from their health care providers. USEPA/Centers for Disease Control (CDC) guidelines on appropriate means to lessen the risk of infection by *Cryptosporidium* and other microbial contaminants are available from the Safe Drinking Water Hotline (1-800-426-4791).

# LEAD & COPPER

In 2023, twenty customers volunteered to have their taps tested for Lead and Copper. Thank you to our customers who participated in this monitoring program. None of the collected samples exceeded the action level (AL). The next round of lead and copper testing is scheduled for summer of 2026. If you would like to have your water tested for lead and copper, please contact [hbenmiled@dpw.lacounty.gov](mailto:hbenmiled@dpw.lacounty.gov). Los Angeles County Waterworks District appreciates your participation.

If present, elevated levels of lead can cause serious health problems, especially for pregnant women and young children. Lead in drinking water is primarily from materials and components associated with service lines and home plumbing. The District is responsible for providing high quality drinking water but cannot control the variety of materials used in plumbing components. When your water has been sitting for several hours, you can minimize the potential for lead exposure by flushing your tap for 30 seconds to 2 minutes before using water for drinking or cooking. If you are concerned about lead in your water, you may wish to have your water tested. Information on lead in drinking water, testing methods, and steps you can take to minimize exposure is available from the Safe Drinking Water Hotline or at <http://www.epa.gov/lead>.



## SAMPLING RESULTS

During the past year, your water was tested for chemical, physical, radiological, and bacteriological parameters. We also test for additional organic and inorganic chemicals that are not regulated. The tables included in this report list all the substances that were detected. The presence of these substances in the water does not necessarily indicate that the water poses a health risk. Unless otherwise noted, the data presented in this table are from the testing performed last year. The State allows us to monitor for certain substances less than once per year because the concentrations of these substances do not change frequently. In these cases, the most recent sample data are included, along with the year in which the sample was taken.

## Table Definitions

**90th Percentile:** Out of every 10 homes sampled, 9 were at or below this level.

**Action Level (AL):** The concentration of a contaminant which, if exceeded, triggers treatment or other requirements that a water system must follow.

**Maximum Contaminant Level (MCL):** The highest level of a contaminant that is allowed in drinking water. Primary MCLs are set as close to the PHGs (or MCLGs) as is economically and technologically feasible. Secondary MCLs are set to protect the odor, taste, and appearance of drinking water.

**Maximum Contaminant Level Goal (MCLG):** The level of a contaminant in drinking water below which there is no known or expected risk to health. MCLGs are set by the U.S. Environmental Protection Agency.

**Maximum Residual Disinfectant Level (MRDL):** The highest level of a disinfectant allowed in drinking water. There is convincing evidence that addition of a disinfectant is necessary for control of microbial contaminants.

**Maximum Residual Disinfectant Level Goal (MRDLG):** The level of a drinking water disinfectant below which there is no known or expected risk to health. MRDLGs do not reflect the benefits of the use of disinfectants to control microbial contaminants.

**Primary Drinking Water Standard (PDWS):** MCLs and MRDLs for contaminants that affect health along with their monitoring and reporting requirements, and water treatment requirements.

**Public Health Goal (PHG):** The level of a contaminant in drinking water below which there is no known or expected risk to health. PHGs are set by the California Environmental Protection Agency.

**ppb:** parts per billion (micrograms per liter)  
**ppm:** parts per million (milligrams per liter)  
**µS/cm:** MicroSiemens per centimeter  
**NTU:** Nephelometric turbidity unit  
**TON:** Threshold Odor Number  
*\*\* HAA5, chlorine, TTHMs, color, odor, turbidity and pH were measured within the distribution system*

**N/A:** Not applicable  
**ND:** Non-detect  
**NL:** Notification level  
**pCi/L:** PicoCuries per liter

PRIMARY DRINKING WATER STANDARDS							
SUBSTANCE (UNIT OF MEASURE)	MCL [MRDL]	PHG [MCLG]	GROUNDWATER			AVEK AVERAGE LEVEL (2023)	TYPICAL SOURCE
			YEAR SAMPLED	RANGE LOW-HIGH	AVERAGE LEVEL	East side Plant	
Dibromochloropropane (ppt)	200	1.7	2022 - 2023	ND - 41	10	N/A	Erosion of natural deposits; runoff from orchards; glass and electronics production wastes
Chlorine** (ppm)	[4.0] as Cl <sub>2</sub>	MRDLG = 4 as Cl <sub>2</sub>	2023	0.6 - 1.1	0.8	1.1	Drinking water disinfectant added for treatment
Fluoride (ppm)	2	1	2021 - 2023	0.19 - 0.23	0.21	ND	Erosion of natural deposits; discharge from fertilizer
Gross Alpha Particle (pCi/L)	15	N/A	2020 - 2022	ND - 4.6	2.6	N/A	Erosion of natural deposits
Haloacetic Acids** [HAA5] (ppb)	60	N/A	2023	2.1 - 14	7.7	14	Byproduct of drinking water disinfection
Nitrate (as N) (ppm)	10	10	2023	0.39 - 10	3.7	0.83	Runoff and leaching from fertilizer use; leaching from septic tanks and sewage; erosion of natural deposits
Total Trihalomethanes** [TTHMs] (ppb)	80	N/A	2023	6.2 - 46	28.1	46	Byproduct of drinking water disinfection
Uranium (pCi/L)	20	0.43	2020 - 2022	1.8 - 2.4	2.2	N/A	Erosion of natural deposits

## LEAD AND COPPER

Tap water samples were collected for lead and copper analyses from sample sites throughout the community

SUBSTANCE (UNIT OF MEASURE)	YEAR SAMPLED	AL	PHG	90TH% LEVEL	SITES ABOVE AL/ TOTAL SITES	TYPICAL SOURCE
Copper (ppm)	2023	1.3	0.3	0.51	0/20	Internal corrosion of household plumbing system; erosion of natural deposits; leaching from wood preservatives
Lead (ppb)	2023	15	0.2	0	0/20	Internal corrosion of household plumbing system; discharge from industrial manufactures; erosion of natural deposits

## SECONDARY DRINKING WATER STANDARDS

SUBSTANCE (UNIT OF MEASURE)	MCL [MRDL]	PHG [MCLG]	GROUNDWATER			AVEK (2023)	TYPICAL SOURCE
			YEAR SAMPLED	RANGE LOW-HIGH	AVERAGE LEVEL	East side Plant	
Color (color units)	15	N/A	2023	ND - 10	<5	<5	Naturally-occurring organic materials
Chloride (ppm)	500	N/A	2021 - 2023	3.5 - 50	23.4	71	Runoff/leaching from natural deposits
Odor (TON)	3	N/A	2023	ND-2	<1	<1	Naturally-occurring organic materials
Specific Conductance (µS/cm)	1600	N/A	2021 - 2023	410 - 820	525	460	Runoff/leaching from natural deposits
Sulfate (ppm)	500	N/A	2021 - 2023	41 - 140	77	59	Runoff/leaching from natural deposits; industrial wastes
Total Dissolved Solids (ppm)	1000	N/A	2021 - 2023	220 - 550	328	240	Runoff/leaching from natural deposits
Turbidity** (NTU)	5	N/A	2023	N/A - 0.45	ND	0.05	Soil runoff
Zinc (ppb)	5000	N/A	2022 - 2023	ND	ND	480	Runoff/leaching from natural deposits; industrial wastes

## OTHER PARAMETERS

SUBSTANCE (UNIT OF MEASURE)	GROUNDWATER			AVEK AVERAGE LEVEL (2023)
	YEAR SAMPLED	RANGE LOW-HIGH	AVERAGE LEVEL	East side Plant
Alkalinity, Total (ppm)	2022 - 2023	130 - 160	144	54
Bicarbonate Alkalinity (ppm)	2022 - 2023	130 - 190	170	54
Calcium (ppm)	2022 - 2023	44 - 75.7	58.9	22
Hardness, Total as (CaCO <sub>3</sub> ) (ppm)	2022 - 2023	140 - 249	195	100
Magnesium (ppm)	2022 - 2023	7.7 - 14.5	11.4	12
Potassium (ppm)	2022 - 2023	1.8 - 3.1	2.4	N/A
Sodium (ppm)	2022 - 2023	20 - 74	35.5	47

## NITRATE

Nitrate in drinking water at levels above 10 mg/L is a health risk for infants of less than six months of age. Such nitrate levels in drinking water can interfere with the capacity of the infant's blood to carry oxygen, resulting in a serious illness; symptoms include shortness of breath and blueness of the skin. Nitrate levels above 10 mg/L may also affect the ability of the blood to carry oxygen in other individuals, such as pregnant women and those with certain specific enzyme deficiencies. If you are caring for an infant, or you are pregnant, you should ask advice from your health care provider.