

INSIDE SOLID WASTE



VOLUME 65 | WINTER | 2011

LA County Board approves ban on single-use plastic carryout bags

Single-use plastic carryout bags will soon be a thing of the past in unincorporated Los Angeles County following the Board of Supervisors' recent decision to ban the bags at all supermarkets, grocery stores, convenience stores, pharmacies, and drug stores.



BAG ON THE RUN...*The bag monster flees for its life after an ordinance banning single use plastic carryout bags at all supermarkets, grocery stores, and convenience stores in unincorporated Los Angeles County is approved.*

The ban, which takes effect on July 1, 2011, at large supermarkets and pharmacies, and at all other stores by January 1, 2012, has been hailed as an "historic achievement" for the County that would provide substantial environmental improvements for the future.

The Board also voted to ban the use of single-use plastic bags at County facilities and offices, County-managed concessions, and by commercial food and beverage suppliers at County-permitted events and County-sponsored events. In addition, stores that provide single-use recyclable paper carryout bags will be required to charge ten cents per bag.

The Board also directed that reusable bags must comply with all state and federal restrictions on permissible levels of lead and other materials, including cadmium.

The ban follows the completion of an Environmental Impact Report (EIR) conducted earlier this year to assess the environmental effects of adopting a plastic bag ban. The EIR concluded that imposing a ban on plastic carryout bags would substantially reduce litter, protect wildlife and marine habitat, and improve quality of life throughout Los Angeles County.

County Public Works Deputy Director, Massood Eftekhari, said that with the



BEAUTY AND THE BEASTS...*Due to their light weight, EPS containers often end up polluting rivers and creeks and endangering wildlife.*

Los Angeles County prohibits expanded polystyrene containers at County facilities

In yet another environmentally-positive move, the Los Angeles County Board of Supervisors has adopted a policy prohibiting the purchase and use of expanded polystyrene (EPS), commonly known as styrofoam, food containers at County facilities, offices, concessions, and by commercial food and beverage suppliers at County-permitted events and County-sponsored events.

The Board's action on September 21, 2010, followed recommendations contained in a study conducted by Public Works and the Responsible Purchasing Network (RPN) that outlined ways to cut the County's carbon footprint and reduce litter. The study recommended the County replace EPS food containers with reusable containers where practicable and recyclable and/or compostable items in all other instances.

continued on page 4

continued on page 5

HHW ROUNDUPS are open from 9 a.m. to 3 p.m. unless otherwise indicated. For more information, call County Public Works at 1 (888) CLEAN-LA (253-2652). For information about City of Los Angeles events, call 1 (800) 98-TOXIC (988-6942).

PERMANENT COLLECTION CENTERS are open on Saturday and Sunday from 9 a.m. - 3 p.m.

Gaffey Street Collection Center

1400 N. Gaffey Street
San Pedro, CA 90731

Hyperion Treatment Plant

7660 W. Imperial Highway., Gate B
Playa Del Rey, CA 90293

Washington Boulevard Collection Center

2649 E. Washington Boulevard
Los Angeles, CA 90021

Randall Street S.A.F.E. Center

11025 Randall Street
Sun Valley, CA 91352

UCLA Location (*E-waste accepted on Saturday only*)

550 Charles E. Young Drive
West Los Angeles, CA 90095

Open Thursday, Friday, and Saturday 8 a.m. - 2 p.m.

Note: Services suspended during rainy weather.

Los Angeles/Glendale Collection Center

4600 Colorado Boulevard
Los Angeles, CA 90039

Antelope Valley Environmental Collection Center

Antelope Valley Public Landfill

1200 West City Ranch Road
Palmdale, CA 93551

Open 1st and 3rd Saturday each month 9 a.m. - 3 p.m.

HHW ROUNDUPS are open on Saturdays.

- Jan 8 **El Monte** - El Monte Airport
4233 North Santa Anita Avenue
- Jan 15 **Bell Gardens** - John Anson Ford Park
Swimming Pool Parking Lot, 7800 block of Scout Avenue
- Jan 22 **Hermosa Beach** - Clark Stadium,
Valley Drive between 8th & 11th Streets
- Jan 29 **Santa Fe Springs** - Rio Hondo College Fire Training
Academy, 11400 Greenstone Avenue
- Feb 5 **Claremont Corporate Yard** - Claremont Corporate
Yard, 1616 Monte Vista Avenue
- Feb 12 **Hawthorne** - Betty Ainsworth Sports Center
El Segundo Boulevard & Doty Avenue
- Feb 19 **Diamond Bar** - City Streets Gateway Corporate
Center, 1300 block of Bridge Gate Drive
- Mar 5 **Monrovia** - Myrtle Avenue Park and Ride Lot
Corner of South Myrtle Avenue and Pomona Avenue
- Mar 12 **Pico Rivera** - Southern California Gas Company
8101 Rosemead Boulevard
- April 30 **Santa Clarita** - College of the Canyons
South Parking Lot, 26455 Rockwell Canyon Road
- June 12 **Calabasas Landfill** - Calabasas Landfill (Scale Area)
5300 Lost Hills Road

INSIDE SOLID WASTE NEWSLETTER

Task Force PE & I Subcommittee Chair - **Mike Mohajer** • Editor - **Gary Boze** • Writer - **Suk Chong** • Production Coordinator - **Dena Venegas** • Graphic Designer - **James Johnson**

Task Force Meetings

Meetings are held at the County Public Works Headquarters, 900 South Fremont Ave., Alhambra.

February 17 | March 17 | April 21

For information, call Tranette Sanders at 626-458-3562, M -Th, 7 a.m. - 5:30 p.m.

Visit www.lacountyiswmtf.org where you can find agendas, meeting minutes, and copies of the Inside Solid Waste newsletter.



JOIN THE TEAM: If you are interested in participating on the Los Angeles County Solid Waste Management Public Education Subcommittee or if you would like to submit an article for *Inside Solid Waste*, please contact **Gary Boze** at 213-703-6483, (ghboze@dpw.lacounty.gov), or **Dena Venegas** at 626-458-3543, (dvenegas@dpw.lacounty.gov). Quarterly meetings are held at the County Public Works Headquarters to discuss and review upcoming newsletters. If you want to be involved or to contribute, please join the Subcommittee!

CalRecycle postpones decision to implement landfill regulatory fee

CalRecycle has postponed a decision to implement a proposed new Closure, Postclosure Maintenance, Corrective Action, and Financial Assurance fee on landfills.

The postponement follows a recent public workshop on the proposal and a subsequent letter from the County's Integrated Waste Management Task Force expressing concern about the fee.

According to CalRecycle, the proposed fee is necessary due to a revenue decline in the Integrated Waste Management Account (IWMA) of nearly 30% since fiscal year 2005/06 as well as increased costs in implementing the recently revised long-term postclosure maintenance, corrective action, and financial assurance regulations.

The fee would be used to recover costs for reviewing closure and postclosure maintenance plans and financial assurance submittals, and implementing any associated requirements,

which are projected to total about \$3 million per year. It would apply to 288 landfill sites that were operating on or after January 1, 1988. The amount would be based on the landfills' airspace capacity. For example, the largest landfills would contribute approximately 2.5 times more than the smallest landfills.

In a letter to CalRecycle, dated November 10, 2010, the Task Force expressed its concern that the imposition of the fee to fulfill a purpose that has already been prescribed and for which funding is already provided through existing laws and regulations was not justifiable.

The Task Force stated the IWMA was specifically established for CalRecycle to recover any costs incurred from carrying out the duties relating to closure, postclosure maintenance, corrective action, and financial assurance regulations. The Task Force said it believes it is important for CalRecycle to disclose how the IWMA is currently allocated among CalRecycle's activities and programs and requested this information be provided at a public workshop.

Landfill operators also voiced concerns over what they saw as an over-simplistic fee estimate method and lack of differentiation for closed and active landfills.

CalRecycle has postponed the rulemaking in order to review the considerable number of comments it received on the proposal.

For a copy of the proposed Fee, visit www.calrecycle.ca.gov/Laws/Rulemaking/ClosureFee/default.htm. For more information, please contact Linda Lee, County of Los Angeles Department of Public Works, at (626) 458-6973, Monday through Thursday, 7 a.m. to 5:30 p.m., llee@dpw.lacounty.gov, or Mike Mohajer of the Task Force at (909) 592-1147.

ISW Going Paperless

In an effort to reduce disposal of solid waste at landfills and to conserve our precious natural resources, the Inside Solid Waste newsletter is going paperless!

This will be the last hard copy. First paperless edition will be Spring 2011.

What do you think are the best paperless ways to distribute the newsletter? Here are some examples:

- Post newsletter on the Los Angeles County Integrated Waste Management Task Force website?
- Email it to subscribers?
- Enotify subscribers when they can download an ecopy?
- All of the above

Please email your comments or ideas to Dena Venegas at dvenegas@dpw.lacounty.gov by February 10, 2011.

Ban on plastic bags

continued from page 1

Board decision, Los Angeles County became the country's largest municipality to enact such legislation, as well as a national leader in the movement to promote the use of reusable bags.

"Los Angeles County has long been at the forefront of environmental protection, and yet more than six billion single-use plastic bags are used each year in LA County alone," Eftekhari said. "We spend over \$18 million annually to clean up and prevent the litter and environmental hazards it creates. Plastic bags generate a substantially disproportionate percentage of that litter."

"The ban will ensure that our mission to preserve natural resources, reduce litter and protect our beaches and waterways for our ten million residents will continue to be met," he added.

Advocates of a single-use plastic bag ban include municipalities, business organizations and environmental groups. Following the Board's adoption of the EIR, it is now expected that several LA County municipalities will implement similar bans.



Page 4, *Inside Solid Waste*, Winter 2011

In April 2007, the Board unanimously adopted a resolution instructing the Chief Executive Office and the Public Works and Internal Services Departments to investigate plastic and paper bag consumption in the County and the possible development of a policy similar to that of San Francisco.

In response to this action, a County working group comprising representatives of the CEO, Public Works, Internal Services, Public Health, and County Sanitation Districts, as well as key stakeholders, including large supermarkets and retail stores, the plastic bag industry, environmental organizations and recyclers, developed a number of alternatives for the Board's consideration.

The following year, the Board adopted a voluntary program to encourage consumers to switch from single-use plastic bags to reusable bags. Although the program, which included the 'Brag About Your Bag' campaign, was successful in raising public awareness about the importance of switching to reusable bags, it was not enough to significantly reduce plastic bag usage and lessen the negative environmental effects of plastic bags.

Following the recent adoption of the new ordinance, County Public Works moved swiftly to create a website, www.aboutthebag.com, to educate County residents about the ban and show civic leaders in other communities how to develop their own ban ordinances.

Public Works has also partnered with the LA County Library to make free reusable bags available to County residents through promotions at branch libraries and the summer reading program.

Public Works has already given away more than 60,000 reusable bags and will make an additional 40,000 bags available free to residents through various County-sponsored events over the next six months.

For more information on the ban, visit www.aboutthebag.com.

Rancho Palos Verdes solid waste collection program update

On July 1, 2010, the City of Rancho Palos Verdes made several major changes to its residential solid waste collection program. The changes included:

- A switch from twice a week trash collection to once a week trash collection.
- A switch from manual collection to automated collection of trash, recycling, and green waste.
- RPV changed its rate structure from a fixed monthly trash rate, to a variable monthly rate based on the size of the trash cart.
- RPV customers now have the choice of three cart sizes for trash, recycling, and green waste.
- Based on a competitive proposal process, RPV customers replaced Waste Management of Los Angeles with EDCO Disposal Corporation.

Through RPV staff and EDCO's hard work and planning, the transition was very smooth.

In a sign of cooperation, EDCO and Waste Management collaborated in collecting the old, unwanted manual cans. During 2 weekends, 69 loads equaling 295,800 pounds of old, unwanted containers were collected and recycled. RPV customers now have automated trash, recycling, and green waste carts.

Customers still have the option of keeping some of their old manual cans for use during the free City-wide brush clearing events that are offered by EDCO.

For more information, contact Lauren Ramezani, Senior Administrative Analyst at Laurenr@rpv.com, or 310-544-5245.

Task Force remembers Steve Uselton

It is with great sadness that we report on the untimely death of Mr. Steve Uselton, who served as head of CalRecycle's Local Assistance Office in Long Beach.

Steve and his 17-year old son Doug were killed in the early hours of Saturday, December 18, 2010, after their car was hit by a suspected drunk driver as they were on their way to a school speech and debate tournament.

For the last decade Steve led the Local Assistance Office staff in providing excellent service and support to jurisdictions in Los Angeles County.

He was always ready to assist local jurisdictions with submitting their annual reports to CalRecycle and maintaining compliance with AB 939.

Mike Mohajer, Los Angeles County Integrated Waste Management Task Force commissioner, remembers Steve as professional, reliable, and knowledgeable — a gentleman and statesman.



"Working with Steve for over 15 years, I found him to be a great ambassador representing the former Waste Board and now CalRecycle in working with 89 jurisdictions in Los Angeles County," Mohajer recalled. "Steve exemplified what I call a true public servant.....customer service with a smile was always his priority. He will be really missed."

Steve is survived by his wife Desiree and daughter Erin. Donations for the family can be sent through the Oxford Academy fund:

Oxford Academy Boosters, Inc.
Douglas Uselton Memorial Fund
5172 Orange Avenue
Cypress, CA 90630

Condolences can be sent via CalRecycle's Long Beach office:

Desiree and Erin Uselton
c/o CalRecycle Long Beach Office
2929 Willow Street
Long Beach, CA 90806

The memorial is scheduled for Tuesday, January 25 at 10 a.m. at:

Christ Church of the Valley
1404 West Covina Boulevard
San Dimas, CA 91773
(909) 592-2282

The Church is located across the street from San Dimas Hospital and is best accessible from Orange Freeway (57) via Covina Boulevard exit, approximately one mile west of the freeway.

Los Angeles County prohibits expanded polystyrene containers at County facilities

continued from page 1

The litter includes a disproportionate number of EPS food containers that are typically white, highly visible and highly buoyant. The containers are often seen floating in gutters, rivers and creeks following rain events.

RPN surveyed County departments on their consumption of EPS containers, conducted lifecycle assessments that compared environmental impacts of EPS and other products, and identified practical, environmentally preferable alternatives to EPS products.

The study found that various County operations spend over half a million dollars on at least 16 million EPS food containers annually. Based on

these findings, RPN specifically recommended that the County and its contractors:

- Discontinue the purchase and use of EPS food containers at all County operations.
- Use reusable food containers when feasible
- When reusables are not feasible, use food containers that can be recycled or composted.

RPN identified a host of food container options made from renewable resources like bagasse and other agricultural waste products, corn-based

polylactide plastics, paper, and other materials. The Board elected to make County offices the first to act in order to demonstrate leadership on this sensitive issue. It is estimated that successful implementation of the internal policy alone would eliminate over 80 Olympic-size swimming pools of polystyrene trash every year.

The Board also directed the Director of Public Works and County Counsel to report back within a year of implementing the prohibition on EPS at County operations, on the feasibility of implementing a restriction on the use of EPS food containers at food service establishments and retail stores in the County unincorporated areas. For more information on County EPS reduction efforts, contact Suk Chong at (626) 458-5167 or schong@dpw.lacounty.gov.

City of Santa Clarita hosts river clean up & safe collection event

The winter season may now be here, but the City of Santa Clarita has recently been busy spring cleaning by hosting a number of clean-up and collection events, as well as an environmental expo.

In October, the City teamed up with the LA County Sheriff's Department to host the Safe & Secure collection event at the College of the Canyons.

The event provided Santa Clarita residents a free opportunity to drop off personal documents for shredding, electronic-waste for recycling, and medications for destruction. It also served as a means to educate residents about the importance of getting rid of items that could put them at risk for identity theft or place their children at risk.

More than 400 vehicles passed through to drop off approximately 7,500 pounds of old tax records, bank statements, cancelled checks, and other papers for shredding and recycling. Eleven cases of medications were also collected for destruction by the Sheriff's Central Property unit.

Two tractor trailers and a large e-waste truck were packed with over 8,000 pounds of electronic-waste, including televisions, monitors, computer processors, and other devices. The City plans to host both events again in 2011.

In September, the City hosted the 16th annual River Rally Clean Up & Environmental Expo.

This year's clean up location was a 2.5 mile stretch of the Santa Clara River in the community of Canyon Country west of the SR-14 Antelope Valley Freeway.

Over 1,400 volunteers took part in the event, collecting about 45,000 pounds of trash and recyclables. This is the largest amount of trash collected over the event's 16-year history. Since the event's beginning, volunteers have collected more than 339,000 pounds of trash and debris from the Santa Clara River and its tributaries.

To cut down on greenhouse gas emissions and maximize the limited parking space, the City hosted a free bike valet for event participants. Over 50 people rode their bikes to the event and utilized the bike valet.

Along with the clean up, the City also hosted an Environmental Expo attended by more than 20 organizations, including the Air Quality Management District, California Native Plant Society, LA County Department of Public Works, Audubon Society, and the LA County Sanitation District. The organizations covered topics such as recycling, air quality, wildlife conservation, pollution prevention, and energy conservation. The City plans to host both events again in 2011.

If you have any questions regarding the City of Santa Clarita's Safe and Secure or River Rally event, please contact Mark Patti, Project Development Coordinator at (661) 286-4098.



STROLLING ON THE RIVER...*River Rally Clean Up participants pick up trash and recyclables along the 2.5 mile stretch of the Santa Clara River.*

New Los Angeles County green building standards code goes into effect

The 2011 Los Angeles County Green Building Standards Code that was recently adopted by the Board of Supervisors became effective on January 1, 2011. It will among other things increase the County's construction and demolition (C&D) debris recycling requirements and assist the County in meeting the State's waste reduction mandates.

The adoption of the Los Angeles County Green Building Standards Code was the result of the State's adoption of the California Building Standard Code in early 2010. As required by the California Health and Safety Code, the County had to adopt an ordinance that imposes the same or more restrictive building standard as the State's Green Building Standard Code (GBSC) by end of 2010. The County also chose to amend some standards to make them more restrictive due to its unique local climatic, geological, and topographical conditions.

The key elements of the County's current C&D Program are revised as follows:

- All construction work requiring a building permit must file a Recycling and Reuse Plan regardless of value.
- All non-residential projects must recycle at least 65 percent of the construction debris.

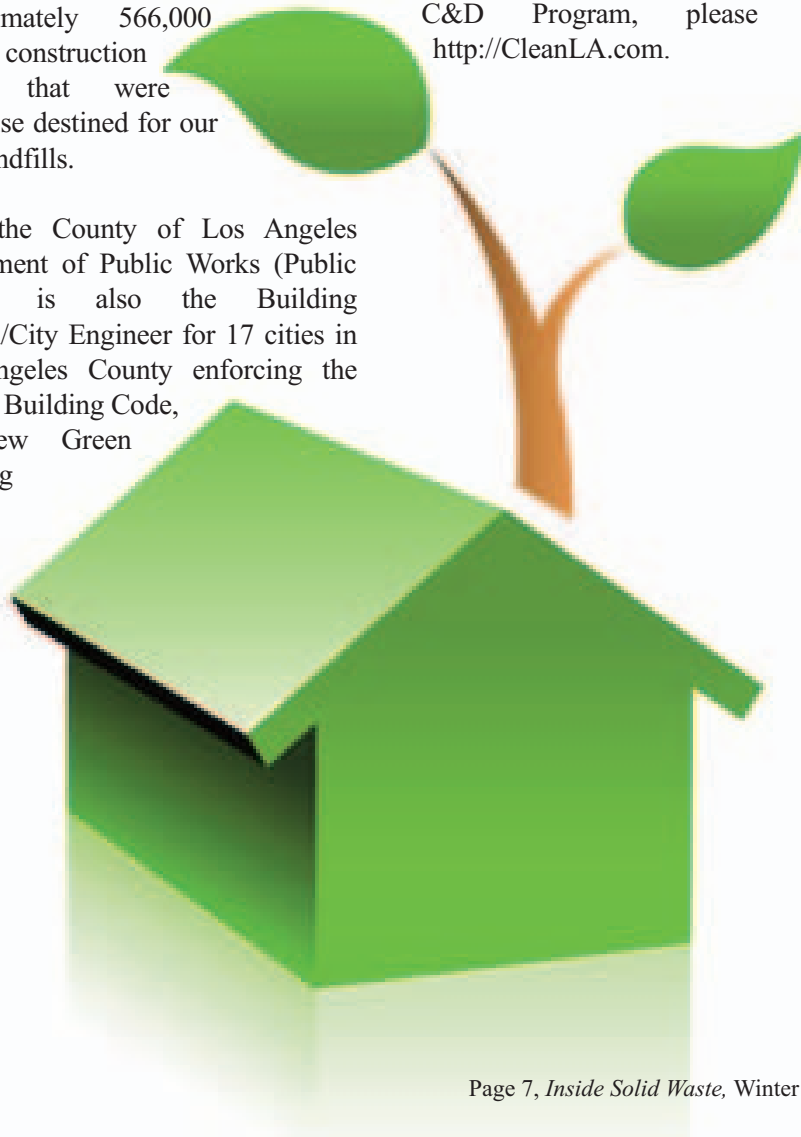
- All residential projects consisting of four or fewer units must recycle at least 50 percent of the construction debris while projects consisting of five or more units must recycle at least 65 percent of the construction debris.

Since its inception, C&D Program has successfully assisted residents and businesses in the County unincorporated areas to divert approximately 566,000 tons of construction debris that were otherwise destined for our local landfills.

Since the County of Los Angeles Department of Public Works (Public Works) is also the Building Official/City Engineer for 17 cities in Los Angeles County enforcing the County Building Code, the new Green Building

Standards Code is being implemented in the unincorporated area as well as in all the cities where Public Works is the designated Building Official/City Engineer. Additional information on the Green Building Standards Code may be viewed at <http://dpw.lacounty.gov/bsd/> or obtained by contacting Public Works, Building and Safety Division at (626) 458-3173.

For additional information on County's C&D Program, please visit <http://CleanLA.com>.



County Public Works and Sheriff's partner for sharps disposal

The Los Angeles County Sheriff's and Public Works Departments have joined forces to enhance disposal opportunities for home-generated sharps waste.

The creative partnership was established earlier this year to provide all County residents a more convenient and safer means to dispose of their used or

unwanted syringes, medical devices and controlled substances.

Following the enactment in 2008 of SB 1305 that formally prohibited the disposal of home-generated sharps in the trash, Public Works established the Home-Generated Sharps Waste Management Program, which provides

free sharps containers to County residents as well as designated drop-off locations for sharps waste at clinics and other venues.

In September 2009, the Sheriff's Department expanded sharps collection under its Safe Drug Drop-Off Program that allows residents to safely and anonymously dispose of expired or unused drugs, sharps, waste and other controlled substances at local Sheriff's stations.

Since the establishment of the Public Works/Sheriff's partnership, sharps collection has been expanded to provide more locations, and bigger and safer drop-off boxes at Sheriff's stations, thus making sharps waste management easier and more accessible.

The County of Los Angeles continues to support producer responsibility bills to shift the management of home-generated sharps waste to manufacturers. In the meantime, Public Works is continuing to work on developing additional opportunities to make home-generated sharps management more convenient for residents Countywide.



LASD Safe-Drug Drop-off boxes are available 24-hours a day, seven days a week in front of the Los Angeles County Sheriff's patrol stations listed below:

1. Carson Station
2. Century Station
3. Compton Station
4. Crescenta Valley Station
5. East Los Angeles Station
6. Industry Station
7. Lakewood Station
8. Lancaster Station
9. Lomita Station
10. Malibu / Lost Hills Station
11. Marina Del Rey Station
12. Norwalk Station
13. Palmdale Station
14. Pico Rivera Station
15. San Dimas Station
16. Santa Clarita Valley Station
17. Temple Station
18. Walnut / Diamond Bar Station
19. West Hollywood Station
20. South Los Angeles Station
(Replaces Lennox Station)
1310 W. Imperial Hwy, Los Angeles 90044

WE LOVE OLD BALD GUYS

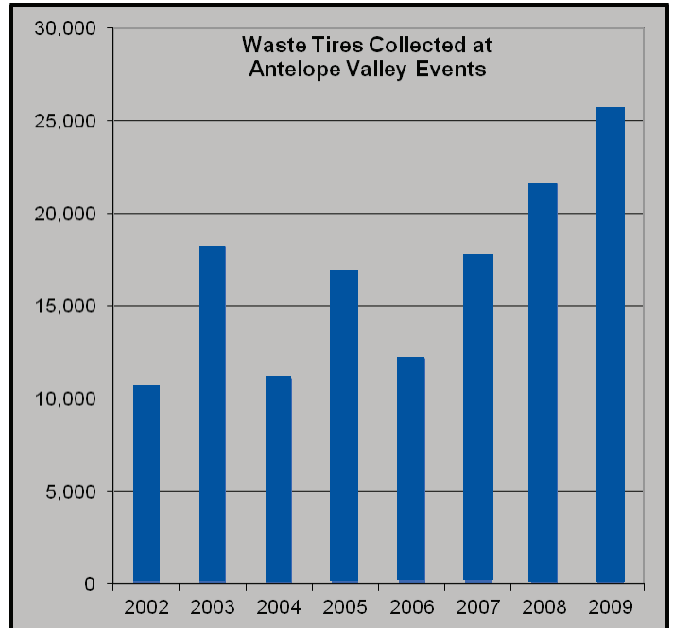
The County of Los Angeles invites you to dust off those old tires sitting in your garage and bring them to a waste tire collection event. The events offer residents a means to dispose of their waste tires. It also helps mitigate potential threats to the environment and public health and safety caused by tires that are frequently illegally dumped on roadways, in alleys, and in sensitive wildlife habitats. Those left near homes, schools, and businesses promote breeding of rodents and mosquitoes, which could spread the West Nile Virus and other diseases. In rural areas where tires are sometimes dumped in large piles, the threat of fire increases seriously, especially during drought conditions.

Illegal dumping is particularly acute in the Antelope Valley where tires are left on homeowners' property. The County continues to be inundated by tires brought in by residents at its semi-annual waste tire collection events in the Antelope Valley.



The County of Los Angeles partners with the cities of Lancaster and Palmdale to conduct events in April and October at multiple drop-off sites. April events are held in conjunction with other cleanup projects during the annual Environmental Pride Month in the region.

The County conducts four other waste tire collection events per year in the Los Angeles basin. Waste tires collected are recycled into loose playground fill, civil engineering applications, and crumb rubber into making products such as rubberized asphalt. Events are supported by grants from CalRecycle.



2011 SCHEDULE OF EVENTS

Glendora – February 19, 9 a.m. - 3 p.m., at
Citrus College, 1000 W Foothill Boulevard

Antelope Valley – April 30, 9 a.m. - 3 p.m.
City Yard, 46008 7th Street West
Lancaster Youth Library, 38510 Sierra Highway, Palmdale
County Yard, 8505 East Avenue T, Littlerock
County Yard, 4859 West Avenue L-12, Quartz Hill
County Yard, 17341 East Avenue J, Lake Los Angeles

Lynwood – May 21, 9 a.m. – 3 p.m., at Open lot
on Bellinger Avenue at Butler Street

Cerritos – August (to be determined)

Montebello – September (to be determined)

Antelope Valley – October (to be determined)

For more information, please visit www.CleanLA.com or contact the Program Manager, Wilson Fong at (626) 458-3581, Environmental Program Division.



Free Environmental Workshops

Calling all teachers, administrators, and non-formal educators!

You are invited to attend free environmental workshops offered by Generation Earth, a Countywide environmental education program administered by the Los Angeles County Public Works Department. Workshop participants will receive tools to implement service learning projects on campus and in the community, and gain ongoing support from experienced Generation Earth staff.

There is no time like the present to take advantage of these resources to help middle and high school students become environmental stewards and to continue to make a collective environmental impact.

JOIN ONE OF THE *FREE* WORKSHOPS LISTED BELOW TO GET STARTED.

Teacher Professional Development Workshops

These workshops offer tools to create a standards-based environmental service learning project (i.e., hosting a campus Electronic-Waste event or starting a campus recycling program); explore environmental issues in Los Angeles County; learn environmental auditing techniques for schools; gain personalized project support; obtain *free* bus transportation for a project-related field trip; and receive information on community resources.

Saturday, February 5, 2011

9 a.m. – 4:30 p.m.

TreePeople Center for Community Forestry

12601 Mulholland Drive

Beverly Hills, CA 90210

Water Pollution Prevention Workshop

This workshop will include steps to understand the dynamics of urban watersheds in Los Angeles County; use watershed management techniques to restore the watershed; positively affect water quality in Los Angeles County; prevent water pollution in Los Angeles County; and survey water flows across the school campus.

Saturday, February 26, 2011

9 a.m. – 12:30 p.m.

TreePeople Center for Community Forestry

12601 Mulholland Drive

Beverly Hills, CA 90210



continued on page 11

continued from page 10

Waste Reduction and Recycling Workshops

These workshops include steps to educate students to reduce, reuse, recycle on campus; measure and impact the campus' waste; coordinate and promote a sustainable recycling program; collaborate with campus and community partners; and participate in the Battle of the Schools Waste Reduction Competition.

Saturday, January 29, 2011

9 a.m. – 12:30 p.m.

**Thomas Jefferson High School
1319 East 41st Street
Los Angeles, CA 90011**

Saturday, March 5, 2011

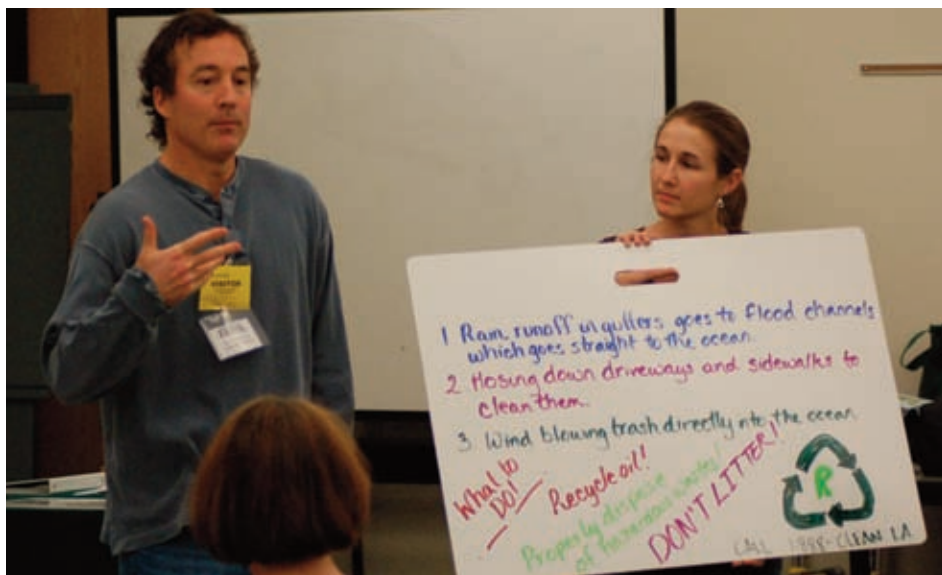
9 a.m. – 12:30 p.m.

**Paul Revere Charter Middle School
1450 Allenford Avenue
Los Angeles, CA 90049**



During the 2009-10 school year, approximately 340 teachers from more than 200 schools participated in the program, which included implementing 225 service learning projects. Will your school be next?

To register for the Generation Earth workshops, please contact Ms. Loyda Ramos of TreePeople at (818) 623-4856 or at lramos@treepeople.org. For information on the Generation Earth program, please contact Edna Gandarilla of the County of Los Angeles Department of Public Works at eganda@dpw.lacounty.gov, via telephone at (626) 458-6536, or visit generationearth.com.



EACH ONE TEACH ONE... Educators Roy Maclean, John Liechty Middle School, (left), Traimy Cannon, Ramona Elementary School (right), share recycling ideas with their fellow educators at recent workshop.

County Public Works Assessing Potential Conversion Technology Project Sites

The County Department of Public Works (DPW) is currently assessing 16 potential sites for the development of commercial conversion technology projects.

The sites were submitted by 11 stakeholders as part of a preliminary siting assessment presented to the Board of Supervisors on October 20, 2010, by DPW.

The assessment, which was completed at the Board's request, is part of an on-going effort to identify feasible conversion technology project sites in Los Angeles County.

It is intended to establish a basis for future, more detailed technical and environmental assessments, and will assist in advancing the development of an optimal number of conversion technology projects within the County in order to meet the long-term solid waste management needs of residents and businesses while generating local renewable energy, and retaining County jobs and economic resources.

The assessment is available for download at the web address: www.SoCalConversion.org.

For additional information, please contact Tobie Mitchell of DPW, Environmental Programs Division at tmitchell@dpw.lacounty.gov.

Landscaping & conservation take root in Huntington Park's first ever Spanish-language workshop

Huntington Park residents last month got the opportunity to learn about California friendly landscaping and water conservation – en Español.

More than 30 residents took advantage of the first-ever Spanish-language workshop on conservation and water saving techniques.

Mario Rivas, Recycling Coordinator for the City of Huntington Park, said the Metropolitan Water District was encouraged by City staff to provide the

Spanish-language workshop following requests from the City's largely Spanish-speaking population.

"Our residents said they wanted to learn more about conservation and water saving, but wanted the instruction in their native language," Rivas said. "This was a great beginning to outreach in Spanish by having certified instructors bring their knowledge and expertise to the community."

The residents who attended were specifically interested in learning about California friendly plants and landscaping.

The workshop was made possible through a partnership between the Metropolitan Water District, Central Basin Water District, the Los Angeles Unified School District, and the City of Huntington Park. It was held in the Huntington Park High School Parents' Center.



The City plans to host more Spanish-language workshops in the future, including courses on recycling, composting, and energy saving techniques.

For more information call Mario Rivas, Recycling Coordinator at (323) 584-6274, or mrivas@huntingtonpark.org.

VERDE THUMB... *Huntington Park residents listen intently as the Metropolitan Water District's Hernan Quezada explains water savings techniques for their homes and gardens.*