



Rosemead Boulevard Relinquishment

Rosemead Boulevard from Foothill Boulevard to the City of Temple City boundary line is now a County road. The Department of Public Works can now move forward with the plan envisioned by Mayor Antonovich to improve and beautify this corridor. The attached pictures show the condition of Rosemead Boulevard before and after the corridor improvement project is completed.



Rosemead Boulevard – Existing Condition





Rosemead Boulevard – Existing Condition





Rosemead Boulevard – Existing Condition





Rosemead Boulevard – Existing Condition





Rosemead Boulevard – Existing Condition



Utility poles will be removed and utilities will be placed underground



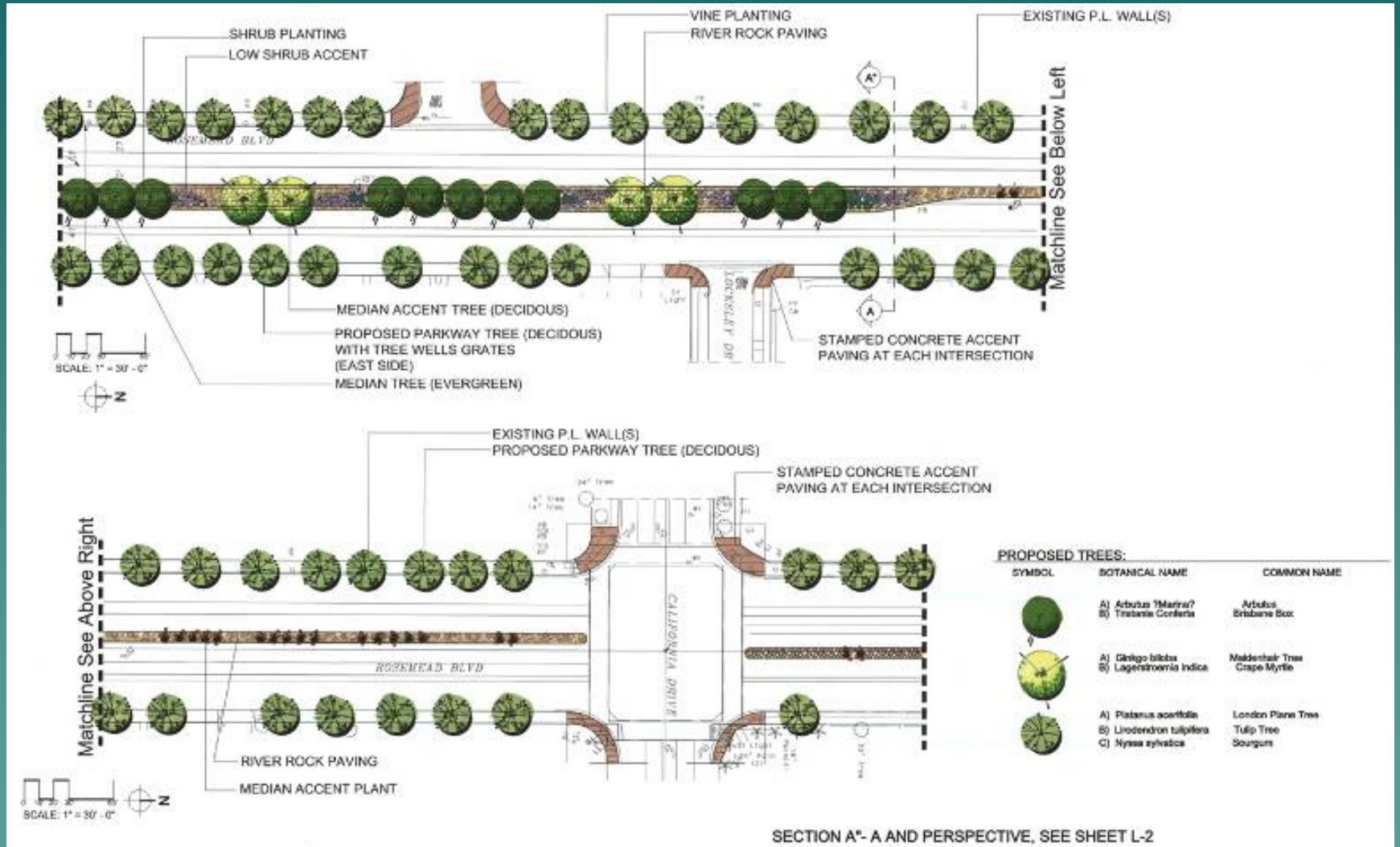
Proposed Landscaping Improvements



Perspective View



Proposed Landscaping Improvements



Plan View



Proposed Landscaping Improvements





Proposed Landscaping Improvements

