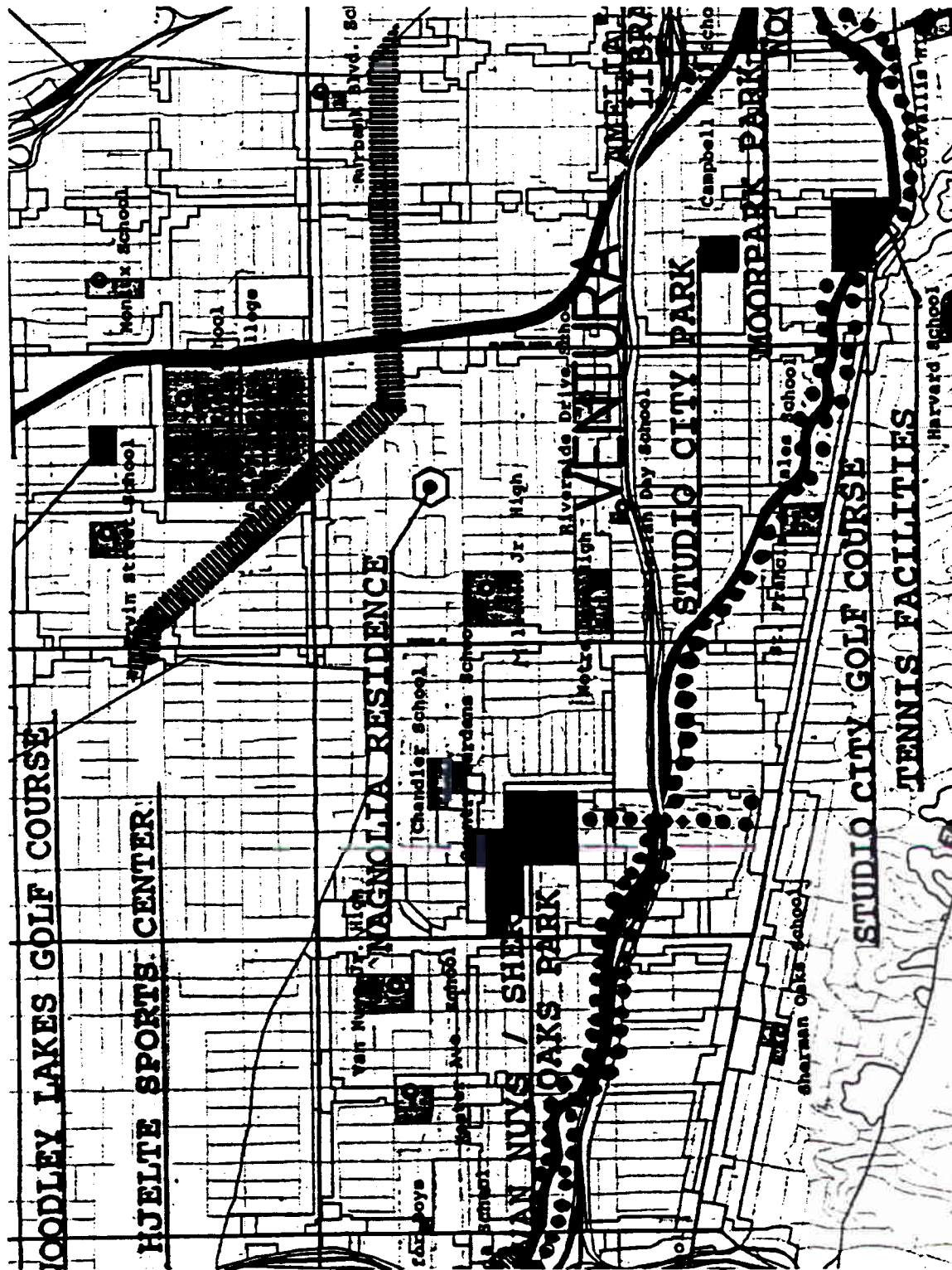


APPENDIX G: LOS ANGELES RIVER SOURCE MAPS

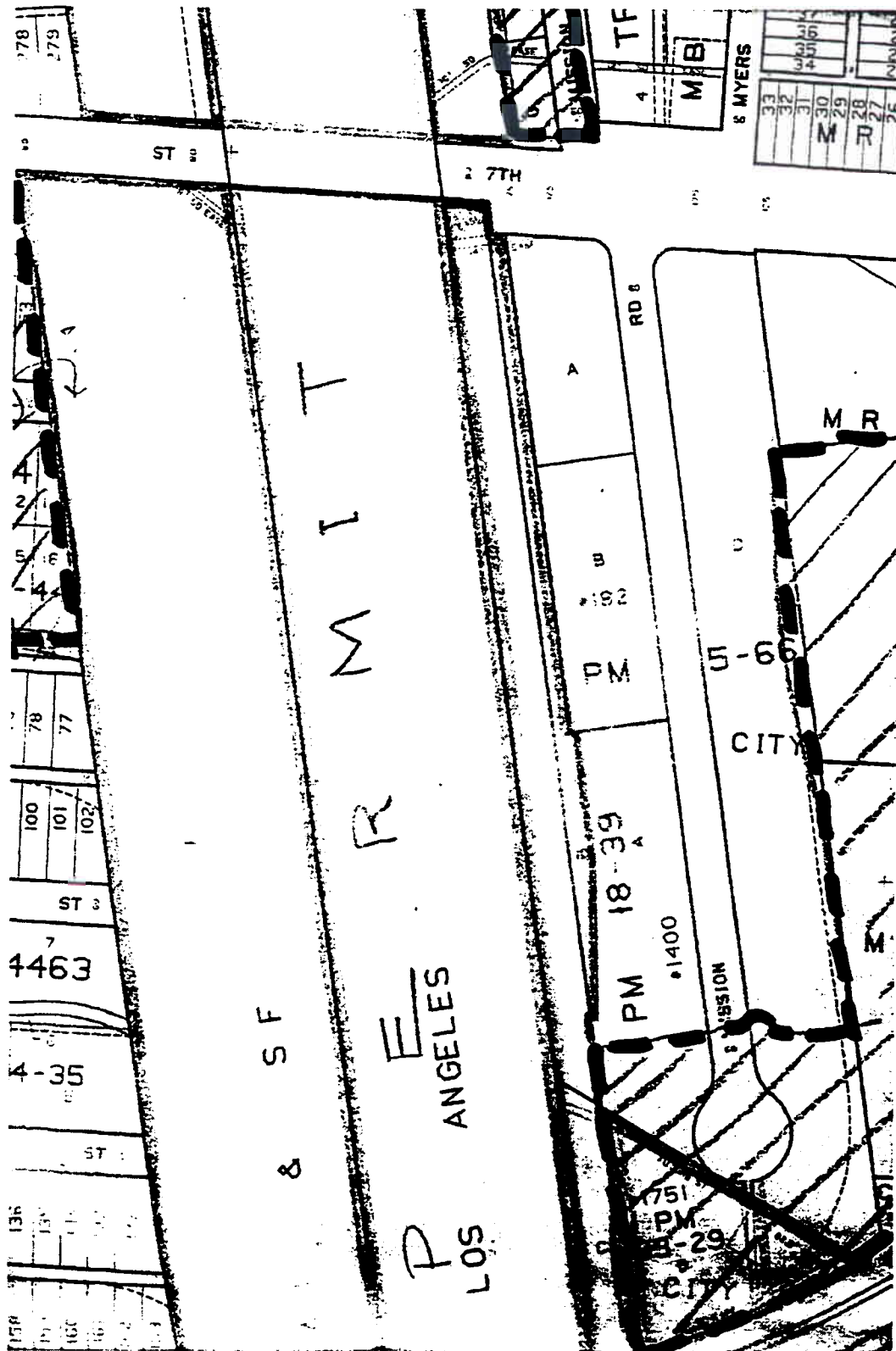
Several kinds of maps were used in preparing the Los Angeles River Master Plan. These are described below with information to access and use for future planning and implementation. Examples of various maps type follows the table.

| LOS ANGELES RIVER SOURCE MAPS | | | | |
|-----------------------------------|--|--|---|--|
| MAP TYPE OR TITLE | TYPE OF INFORMATION | FORMAT | COMPILED AND MAINTAINED BY | AVAILABILITY |
| A. Community Resources | Community based resources within approximately one mile of the Los Angeles River: recreation facilities, transportation lines and stations, schools, and some cultural and historic sites. | Acetate overlays, hand drawn in color on oversized GIS base map of streets and freeways. Two parts, each approximately three feet high by eight feet wide. Scale: 1:28,800 | Compiled by the Los Angeles River Master Plan Planning Team in 1993. No plan for update. | On file at L.A. County Dept. of Public Works (LACDPW) - Planning Division. May be used in the office by appointment with L.A. River pro- |
| B. Utility Right-of-Way | Easement holders of the Los Angeles River. Private and public property lines and easements. | Color markups on blue line prints of assessor's maps. | Easement holders along the river were mapped for the Master Plan process by LACDPW on LA County Assessor's maps. Updated annually. | On file at LACDPW - Planning Division. May be used in the office by appointment with L.A. River project manager. |
| C. County Land Use | Color-coded land uses (47 total) within one mile of the Los Angeles River. | GIS print out with land uses shown only in study area (one mile on each side of the River) Scale: 1:24,000 | Printed for the Master Plan project by L.A. County Dept. of Regional Planning. No plans for updates. | On file at LACDPW - Planning Division. May be used in the office by appointment with L.A. River project manager. |
| D. City General Plan and Land Use | Land use and zoning within each city's boundaries. | More accessible copies are reproduced in published General Plans. Formats can range from 8 1/2" X 11" to large fold-out maps. | Compiled and maintained by each city. Updates vary. | Copies on file in city administrative office and in public libraries. |
| E. USGS Topographic Maps | Depict a wide range of physiographic (natural) and cultural (built) characteristics of the landscape. | 7.5 minute quadrangle. Scale: 1:24,000 | U.S. Geological Survey. Updates vary. Recent photo survey updates printed in purple ink. | Available for purchase from USGS, sporting goods stores, and map dealers. |
| F. Aerial Photographs | Photographs of the landscape shot perpendicular to the ground plane. | Color photographs in varying sizes with overlap for stereo viewing. Flown January 1992. | U.S. Army Corps of Engineers and L.A. County Depts. of Public Works and Regional Planning through contracts with private aerial survey firms. | On file in respective offices. May be used in the office by appointment with L.A. River project manager. Negatives owned by private aerial survey firms. Sets of photographs may be purchased from them. |

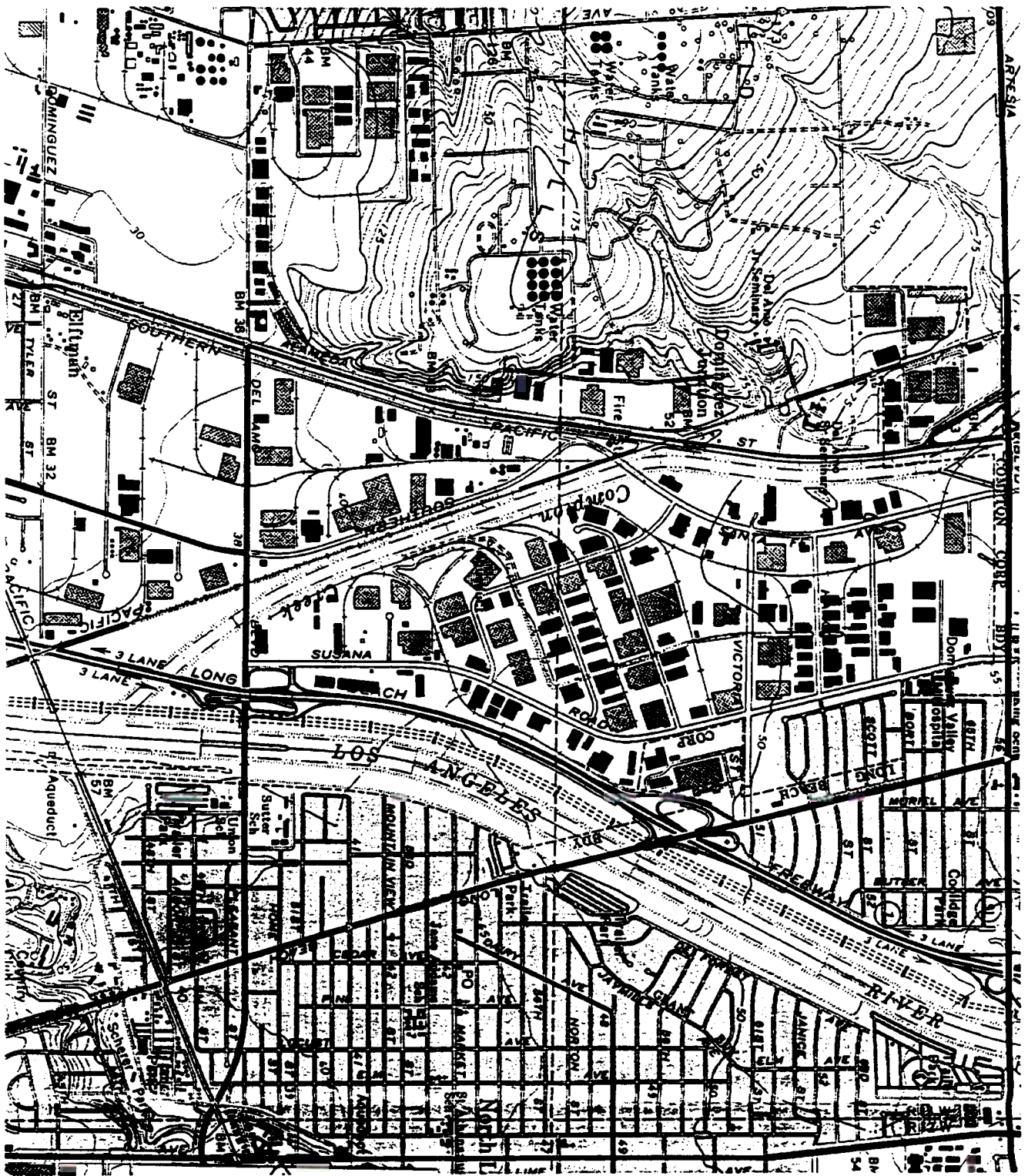
A. COMMUNITY RESOURCES



B. UTILITY RIGHT-OF-WAY



E. USGS TOPOGRAPHIC MAPS



F. AERIAL PHOTOGRAPHS

