

# LOS ANGELES RIVER



## MASTER PLAN

# Sign Guidelines

---

August 2003

Prepared for: County of Los Angeles  
Department of Public Works

Prepared by: Mountains Recreation &  
Conservation Authority



---

Chapter 1: Introduction .....	3
1.1 The Los Angeles River Master Plan .....	3
1.2 Use & Purpose of the Sign Guidelines .....	3
1.3 Approvals .....	4
Chapter 2: Standard Design Elements.....	5
2.1 Elements of Los Angeles River Signage .....	5
2.2 River Graphic Background .....	5
2.3 Heron Logo .....	5
2.4 Font .....	5
2.5 Materials.....	5
2.6 Nomenclature .....	5
2.7 Language .....	6
2.8 General Guidelines .....	6
Chapter 3: Design Specifications .....	8
3.1 Introduction .....	8
3.2 Directional Signs .....	8
3.3 Informational Signs .....	12
3.4 Interpretive Signs and Displays .....	15
3.5 Warning and Safety Signs .....	18
3.6 Regulatory Signs .....	20
3.7 Destination Signs .....	23
3.8 Bikeway Distance Markers .....	26
Chapter 4: Installation & Maintenance .....	28
4.1 General Guidelines .....	28
4.2 Installation of Aluminum Signs .....	29
4.4 Installation of Interpretive Signs and Displays .....	33
4.4 Installation of Trail Markers .....	40
4.5 Graffiti and Vandalism Management .....	41
4.6 Location of Signs.....	42
Resources .....	43
Acknowledgments.....	44
Appendices .....	45
A. Juan Bautista de Anza National Historic Trail .....	46
B. Proposition 12 and 13 Requirements .....	49

## Chapter 1: Introduction

## Chapter 2: Standard Design Elements

2.2 River Graphic Background .....	5
2.3 Heron Logo .....	5

## Chapter 3: Design Specifications

3.2.1 Example: Directional Sign for River Bikeway Access .....	10
3.2.2 Directional sign for River Access Specifications .....	11
3.3.1 Park Entry Sign Specifications .....	13
3.3.2 Example: Park Entry Signs .....	14
3.3.3 Example: Other Types of Informational Signs .....	14
3.4.1 Interpretive Sign Specifications .....	16
3.4.2 Example: Interpretive Signs .....	17
3.5.1 Example: Warning and Safety Signs .....	19
3.6.1 Regulatory Sign (with rules) Specifications .....	21
3.6.2 Example: Regulatory Signs .....	22
3.7.1 Destination Sign Specifications .....	24
3.7.2 Boundary Sign Specifications .....	25
3.8.1 Bikeway Distance Marker Specifications .....	27

## Chapter 4: Installation and Mounting

4.2.1 Construction Detail: Aluminum Sign .....	30
4.2.2 Variations of Aluminum Sign Installation .....	32
4.3.1 Construction Detail: Trailside Display .....	34
4.3.2 Variations of Interpretive Sign Installation .....	35
4.3.3 Construction Detail: Standard Kiosk .....	36
4.3.4 Construction Detail: Kiosk with River Rock Base .....	37
4.3.5 Construction Detail: Eight-sided Kiosk .....	38
4.4.1 Construction Detail: Trail Marker .....	40
4.6.1 Example: Location of Informational Signs .....	42

## 1.1 *The Los Angeles River Master Plan*

In response to the citizens' interest in the Los Angeles River in January 1990, former Los Angeles Mayor Tom Bradley established a Task Force to assess the River's environment and opportunities for recreational development. The Task Force examined the River as a dependable water source, the siting of the Pueblo near its banks, a means for flood protection, and a medium for diverse vegetation and bird life. With increasing attention, efforts have been made to make the Los Angeles River compatible with Southern California life. The Task Force recommended river improvements and development of a master plan for the River.

In 1996, the *Los Angeles River Master Plan* was unanimously approved by the Los Angeles County Board of Supervisors, who directed the Department of Public Works to coordinate Master Plan implementation efforts, with assistance from an advisory committee, County Regional Planning and Parks and Recreation Departments, and National Park Service. The plan formulated a multi-objective program that recognizes the River's primary purpose of flood control. Many types of projects were suggested as an integral part of the Master Plan.

Implementing the Master Plan consists of the installation of landscaping, bikeways, trails, parks, and various art work projects. The Los Angeles River Bikeway will link many of the improvements together and provide access to river parks. These Guidelines are applicable to all types of improvements.

The *Los Angeles River Bikeway* is a Class I bike path that will extend from the San Fernando Valley to downtown Los Angeles, and eventually connect to the LARIO trail. Already completed is a segment leading from Griffith Park to Elysian Valley in northeast Los Angeles. The *Taylor Yard Bikeway* is a planned Class I facility that extends along the eastern bank of the Los Angeles River, meeting the Los Angeles River Bikeway at the northwest edge of Confluence Park. The *Arroyo Seco Bikeway* is a Class I bike path that will connect Pasadena to the Los Angeles River Bikeway. Already completed is the northernmost segment beginning near the South Pasadena/Los Angeles border. The LARIO trail extends along the Los Angeles River from its confluence with the Rio Hondo to the ocean.

## 1.2 *Use & Purpose of the Sign Guidelines*

These *Sign Guidelines* are intended to supplement the *Los Angeles River Master Plan*. Other supplemental documents include the *Landscaping Maintenance and Operations Manual* and the *Landscaping Guidelines and Plant Palettes for the Los Angeles River and Tujunga Wash*. As identified in the Master Plan, the purposes of the Sign Guidelines are to create a framework for consistent signage along the river and develop and reinforce an identity for the Los Angeles River park system through signage.

Excluded from the *Sign Guidelines* are signs that are not specific to the Los Angeles River and its associated parks and trails. The design guidelines herein

are intended only for parks, trails, and access points along the Los Angeles River and Tujunga Wash, but may also be applicable for other river systems. Other parks, trails and bikeways in Los Angeles are not addressed.

Also excluded from this manual are federal, state and municipal requirements. All signs and sign installations must comply with American Disabilities Act (ADA) requirements. Users should become familiar with the applicable requirements for their project. The Federal Highway Administration's *Manual on Uniform Traffic Control Devices* (MUTCD) is a good starting point. Copies of the MUTCD are available from:

Government Printing Office  
Superintendent of Documents  
710 North Capitol Street, NW  
Washington, DC 20402

This manual is intended as a set of guidelines to help users develop signage for parks and trails associated with the Los Angeles River system. Compliance with the guidelines herein is recommended for consistency along the river. These guidelines were developed with two goals in mind: creating an identity for the park system and leaving flexibility for the end users of the manual.

The Los Angeles River development is an on-going effort and, therefore, information in this manual is subject to change. The manual will be updated accordingly.

**1.3** *Approvals* Approval procedures for signs will vary from project to project. Users should become familiar with the applicable procedures for their project. In general, the Los Angeles County Board of Supervisors shall have approval for the Sign Guidelines, and for all signs within their jurisdiction, including signs along the Bikeways.

Parks and trails that do not fall under the County's jurisdiction shall require approvals from the agency that owns and/or operates the park land. Approval must be obtained from the appropriate, responsible agencies prior to selection and installation of signs.

Caltrans shall have approval for all signs in their right-of-way.

City of Los Angeles, Department of Transportation shall have approval for all signs in their right-of-way. All other cities with jurisdiction within the Los Angeles River system shall have approval for all signs in their respective rights-of-way.

### 2.1 *Elements of Los Angeles River Signage*

Standard design elements for Los Angeles River signage include a graphic background, color, logo, font, and materials. These elements are to be consistent for each type of sign throughout the river system.

### 2.2 *River Graphic Background*

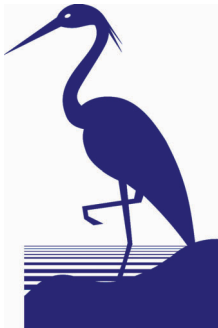


The graphic background is to be used on directional signs, informational signs, and destination signs. Artwork for the river graphic is available from the County of Los Angeles Department of Public Works. The standard colors used in the graphic are Pantone Matching System (PMS) colors: PMS 343 (green) and PMS 293 (blue).

No background is used on regulatory or interpretive signs. Regulatory signs shall have a solid color background of PMS 343 (green). Interpretive signs shall incorporate a colored stripe of PMS 293 (blue) across the top.

Background graphics and colors for warning and safety signs shall be per MUTCD or other applicable regulations.

### 2.3 *Heron Logo*



To reinforce a single identity for the Los Angeles River system, a graphic logo was created. This image of a Great Heron on a riverbank is appropriate to use all along the river and its tributaries. Once adopted and used alone or with the phrase 'Los Angeles River', residents and visitors will begin to associate it with the Los Angeles River park system.

The logo image may be used as a positive or negative. It should appear only in a single color, of either white or PMS 293 (blue) on a background of white. Do not use multiple colors or non-standard colors for the logo.

The logo's size is proportional and should not be expanded, condensed or recreated. Original artwork, for both positive and negative, is available from the Department of Public Works.

### 2.4 *Font*

Fonts used on Los Angeles River signs include Belwe Medium and Arial / Helvetica. Belwe is an Adobe font. The phrase 'Los Angeles River' should always appear in Belwe medium font. Fonts can be obtained from the County of Los Angeles Department of Public Works.

### 2.5 *Materials*

Standard materials for signs are aluminum 0.080 thickness with 3M-1150 Anti-Graffiti Overlay. The Overlay also acts as a UV protectant.

### 2.6 *Nomenclature*

The Los Angeles River system consists of the Los Angeles River with Tujunga Wash, Arroyo Seco, Rio Hondo and Compton Creek as major tributaries. Minor tributaries include Pacoima Wash, Verdugo Wash, Bell Creek, Calabasas Creek, Chatsworth Creek, Browns Canyon Wash, Aliso Canyon Wash, Caballero Creek, Bull Creek, and the Burbank Western Channel.

Where signs are posted on a tributary or associated park or trail, the name of the tributary may be substituted for ‘Los Angeles River’. All other design specifications apply. While the name of this tributary/river may vary, the colors, fonts, shapes, logo and sizes shall remain consistent throughout the entire river system, reinforcing the identity.

Until improved as a Class I Bikeway, the trails along the river’s maintenance easement should be referred to as “Los Angeles River Greenway.” Mini-parks and access points to the greenway’s trail may be signed as “Los Angeles River Greenway” if no other name is adopted.

**2.7** The Los Angeles River travels through some of the most diverse  
*Language* neighborhoods in the region. In some locations it may be necessary or desired to provide translations from English to another language on signs. Along the Los Angeles River, Spanish translation is typical, but translations to other languages are not excluded. When translations are provided, the following guidelines should be followed:

1. The English version of the text shall appear above the translation.
2. Translated text should appear in the same font /color of the English text. Where non-western fonts are used (i.e., Asian, Arabic, Hebrew, Cyrillic, etc.), choose a font that is clear, simple and basic with little or no stylistic modifications. An example of a western font that is clear, simple and basic is Arial.
3. When deciding which language for translation, considerations should include the makeup of nearby neighborhoods, potential visitors coming from other areas, and the need for translations.
4. Translations should be proofread by multiple parties before use.
5. Translations may be placed on a separate sign for clarity. If separate signs are used, both signs should be placed side by side.

**2.8** Keep sign messages brief. Unnecessary information will confuse the viewer.  
*General Guidelines* Whenever possible, messages should be presented using positive information. For example, park hours should be listed as “Park Open Sunrise to Sunset” instead of “Park Closed Sunset to Sunrise”.

Line-spacing between two different messages should be greater than line spacing between lines of the same multiple-line message.

Text should not run right up to the edge of a sign or border.

If a line of text needs to be reduced in order to fit on a sign, use commonly recognized abbreviations, reduce the number of words or reduce the size of

the type for the entire message. Typeface should not be condensed.

Lettering and sign panel size should be appropriate for the distance and speed at which a sign is viewed. Use upper and lower case whenever possible. Upper and lower case text is easier to read and understood faster than text in all capital letters.

Signs should face the intended viewer. Refer to ADA requirements.



*Introduction* 3.1 The Design Specifications are organized by sign type: Directional, Informational, Interpretive, Warning and Safety, Regulatory, Destination, and Distance Markers.

*Directional Signs* 3.2 **Purpose**  
Directional signs are used to alert travelers to the location of the river, the Bikeways, and river parks. They serve an important wayfinding function and will set traffic patterns to and from the river. Jurisdictionally, these signs will be located in Caltrans right-of-way, City of Los Angeles DOT right-of-way, unincorporated Los Angeles County, or within individual cities. All signs must conform to the appropriate jurisdictional regulations.

### Location and Placement

Locations for directional signs should follow uniform traffic standards. Approval must be obtained from the appropriate, responsible agencies prior to selecting/placing signs. Streets and intersections with crosswalks and/or traffic signals are preferred locations.

Coordinate with local residents and community leaders to determine the best locations for directional signs. Local residents' input is critical to ensure that signs do not create unwanted, excessive traffic through residential neighborhoods. Individual streets may have unique characteristics that will not be apparent to outside planners. These nuances must be considered when locating directional signs because they will establish the preferred route for visitors to the river and river access points.

Locations chosen should have the optimal benefit for bringing attention to the River's access points, and ideally lead directly to the river or to a river access point. As access points are created/improved, directional signs should be added as needed to direct visitors to the river. Directional signs may also occur along the Bikeway itself, directing users to the river parks and access points.

Within Elysian Valley, directional signs are recommended at the following intersections:

- Oros Street/Riverside Drive
- Riverside Drive/Stadium Way
- Stadium Way/Interstate 5 offramp
- Riverside Drive/Newell Street
- Newell Street/Ripple Street
- Newell Street/Blake Avenue
- Blake Avenue/Knox Street
- Ripple Street/Rosanna Street
- Riverside Drive/Gilroy Street

Fletcher Drive/Ripple Street

Fletcher Drive/Ripple Street

Fletcher Drive/State Route 2 offramp

Riverside Drive/Eads Street is also recommended. However, additional signs will be needed at Blake Street/Eads Street, Blake Street/Oros Street, and Blake Street/Newell Street because Eads Street itself does not provide access to the river.

Within Atwater Village, directional signs are recommended at the following intersections:

Glenhurst Avenue/Gracia Street

Glenfeliz Boulevard/Sunnynook Drive

### Standard Sign Features

For signs that direct visitors to the Bikeway from local streets, a standard bikeway sign will be used, following City of Los Angeles standards for Class I Bikeway. Added to the same pole will be a sign with the text “Los Angeles River” and the heron logo. The County of Los Angeles, with approval from the City of Los Angeles DOT Bikeways Division, has developed the prototype for these signs. See Figure 3.2.1. In areas where a Bikeway is planned but not yet constructed, signs should follow the County prototype, excluding the “Bike Path” element. This element can be added at the time of construction.

For signs that direct visitors to the River, where there is no existing Bikeway, the signs shall include the river graphic background, heron logo, and a directional arrow. See Figure 3.2.2. This sign, with the river graphic background and heron logo, is the preferred directional signage. In cases where this sign is not accepted by a permitting agency, 3.2.1 should be used instead.

### Installation

Installation should follow guidelines in Chapter 4.

Figure 3.2.1  
Example: Directional  
Sign for River  
Bikeway Access



Detailed specifications for Bicycle Route Signs are found in the *MUTCD*, Sections 9B.17, 9B.18, 9B.19, and Table 9B-1, and are as follows: Signs have a green background with a retroreflectorized white legend and border. Minimum sizes are 24" x 18" for the Bike Path sign, and 12" x 4" for Supplemental Guide signs, such as the top and bottom plate shown here.

In cases where the Bikeway does not yet exist, these directional signs will include the top plate and bottom arrow only, with the Bike Path sign to be added later.

## 3.2.2

Directional sign for  
River Access  
Specifications

**SIGN  
SPECIFICATIONS**

Height: 48"  
Width: 40"  
Material: Aluminum  
0.080 thickness with  
3M-1150 Anti-  
Graffiti Overlay  
coating  
Special: Rounded  
corners, 1" radius.  
Background Image:  
River graphic.

**TITLE 1**

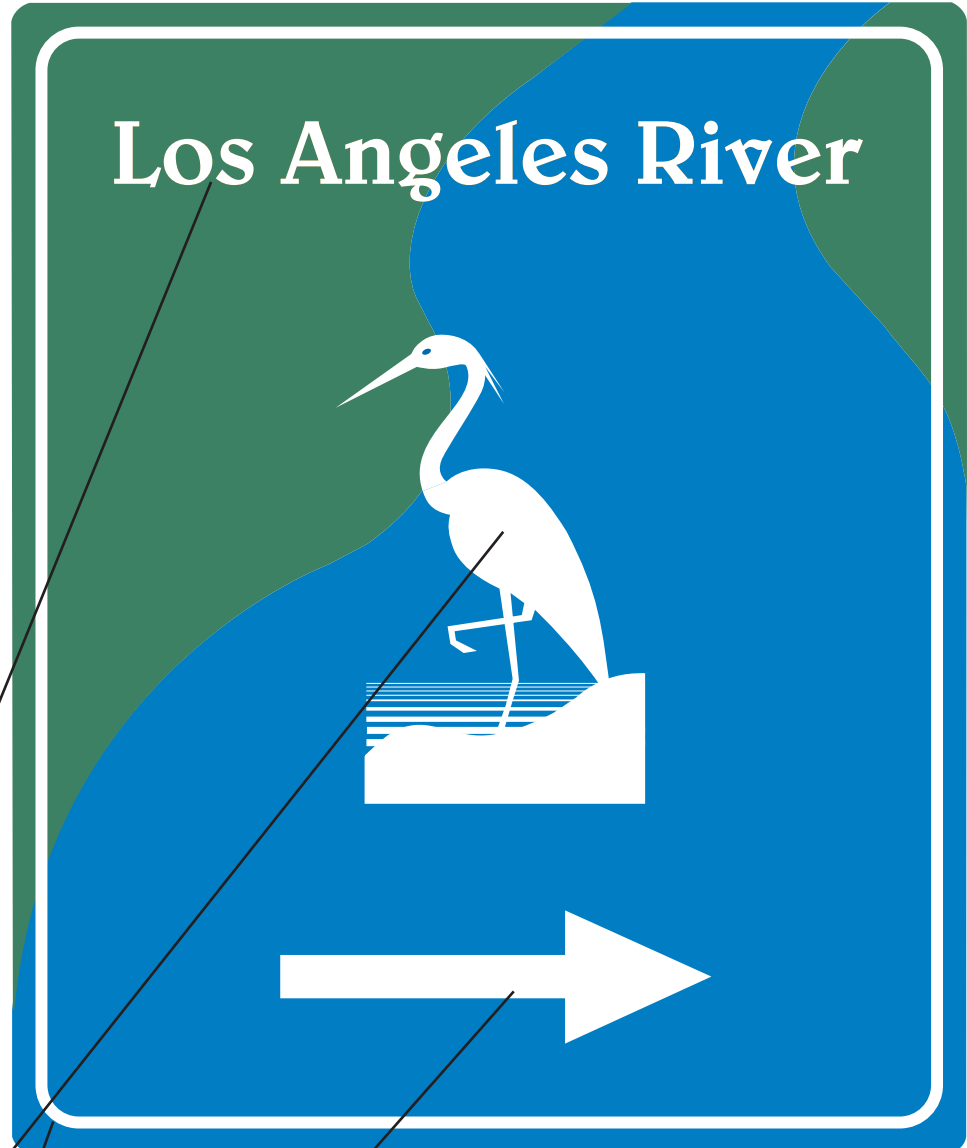
Text: "Los Angeles  
River"  
Font: Belwe  
medium  
Size: 275 point  
Color: White  
Position: Centered,  
4.5" below top  
border

**HERON LOGO**

Size: 9" Height  
minimum, 12"  
maximum  
Color: White  
Position: Centered,  
2" minimum from  
bottom border

**BORDER**

Size: 0.5" (36 point)  
Color: White  
Position: 1" from edges  
Special: 1" radius corners



**ARROW**

Size: 18" Length  
Color: White  
Position: Centered



### 3.3 Purpose

#### *Informational Signs*

Informational signs are used to inform visitors about a place, and include park entry signs and other non-regulatory signs .

Park entry signs are used to inform visitors about the park or trail, the owner/operator, funding source(s), agencies and organizations involved with the project, as necessary. Grant funding sources may have specific requirements for credits and graphics. Refer to Appendix B for Proposition 12 and 13 requirements. As of July 2003, no requirements have been published for Propositions 40 or 50. Where possible these requirements should be incorporated with the guidelines herein. See Figure 3.3.2.

#### **Location and Placement**

Locations of park entry signs will be determined by the park owner/operator. Suggested location is near the primary entrance, visible from the street or trail, to aid visitors in finding the park or trail. Sign locations should not obstruct views into the park or of scenic vistas. Where possible, signs should be clustered to reduce visual clutter. Signs may be reduced to appropriate size based on each project setting.

Park entry sign guidelines are discussed on the following page. See Figure 3.3.1

#### **Other types of informational elements**

Banners may be used along arterial and collector roads to bring attention to the river park system. Design elements on the banner should be consistent with the standards herein for color, fonts, and logo. Banners are discussed in the *Los Angeles River Master Plan Landscaping Guidelines and Plant Palettes*.

As an alternative to typical entry signs, architectural gateway structures and sculptures may be used for park identity and entrance demarcation. Ideas previously generated include sculptures of herons mounted on posts or hanging from poles, and gateway structures that incorporate heron images or the text 'Los Angeles River'.

Trails along the Greenway may be shared by several types of users, including walkers, bikers and equestrians. Trail use information should be available, describing the trail and necessary trail etiquette. Trail etiquette signs stating how users should yield to each other should follow commonly accepted guidelines.

#### **Installation**

Installation should follow guidelines in Chapter 4.

## 3.3.1

Park Entry Sign  
SpecificationsSIGN  
SPECIFICATIONS

Height: 48"

Width: 40"

Material: Aluminum  
0.080 thickness with  
3M-1150 Anti-  
Graffiti Overlay  
coatingSpecial: Rounded  
corners, 3" radius.Background Image:  
River graphic.Colors: Match  
PMS 293 (blue)  
PMS 343 (green)TITLE 1Text: "Los Angeles  
River"Font: Belwe  
medium

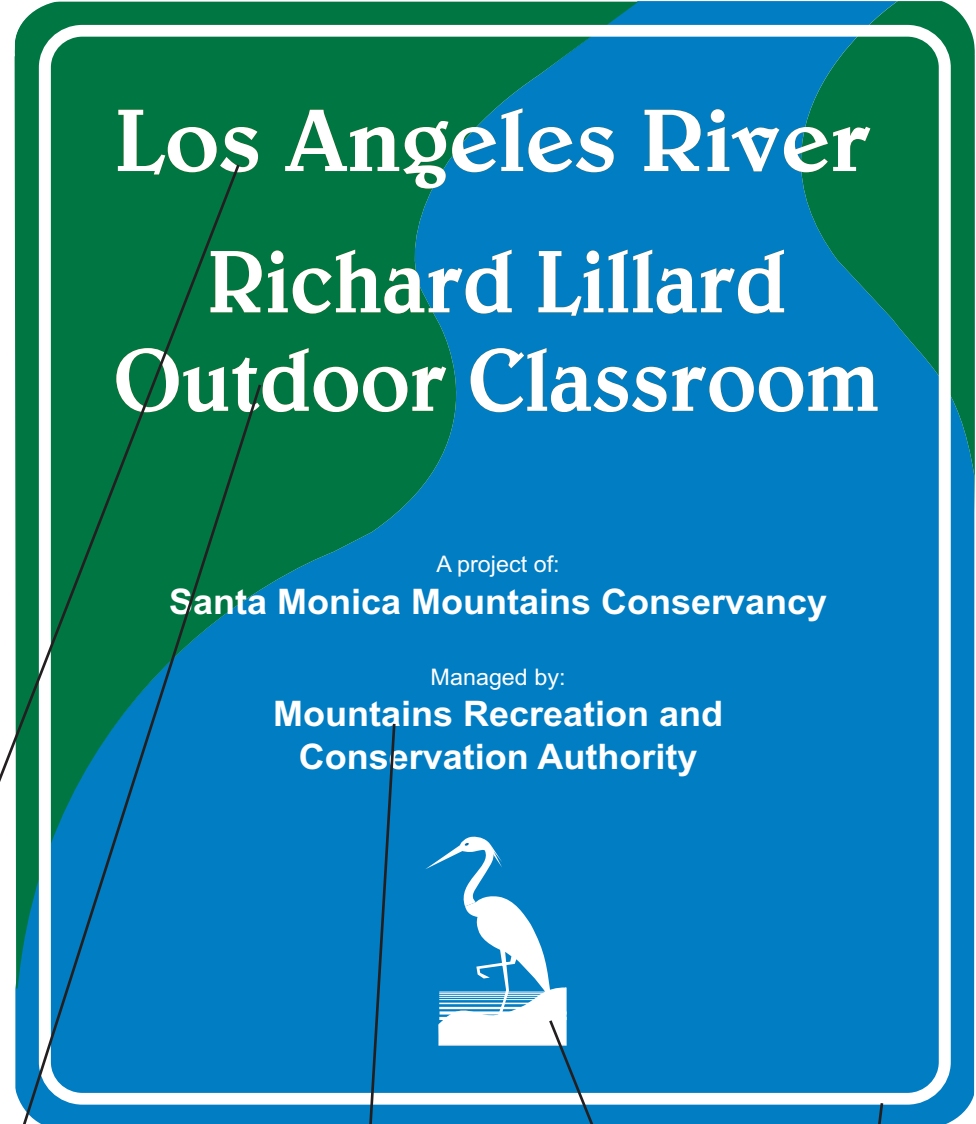
Size: 2.6" Height

Color: White

Position: Centered,  
3" below top borderTITLE 2Text: Name of park  
or trailFont: Belwe  
medium

Size: 2.4" Height

Color: White

Position: Centered,  
2.8" below Title 1INFORMATIONAL TEXT

Font: Arial / Helvetica

Size: 0.7-1.5" Height  
(*Example uses 0.7" and  
1.1" text*)

Color: White

Position: Centered,  
Place toward bottom  
of sign leaving space  
under the park name.Informational Text  
should be clearly  
subordinate to the Titles.HERON LOGO

Size: 9" Height

Color: White

Position: Centered,  
2" from bottom  
borderBORDER

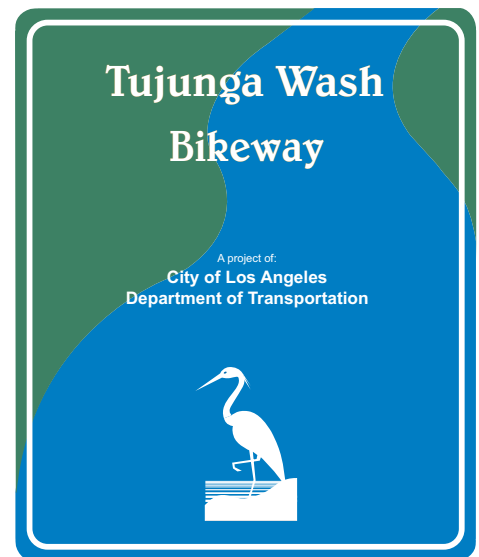
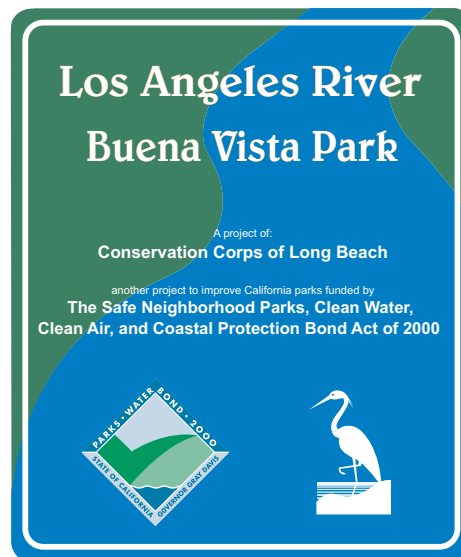
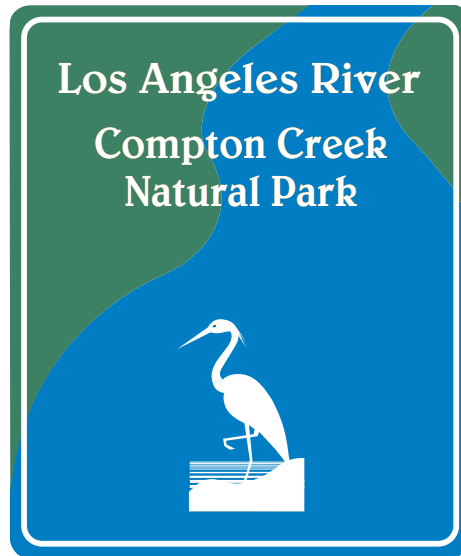
Size: 0.5"

Color: White

Position: 1" from  
edges  
Special: 2" radius  
corners

## 3.3.2

Example:  
Park Entry Signs



## 3.3.3

Example: Other  
Types of  
Informational Signs



### 3.4 Purpose

#### *Interpretive Signs and Displays*

Interpretive signs and displays are used to educate park visitors. Typically, they will be found in river parks or at access points to the river and trails. Each park-owning agency will determine the content and use of interpretive signs. The *Los Angeles River Master Plan* has identified appropriate locations and topics for interpretive signage and displays.

Suggested topics include geomorphology and engineering of the river, ecological restoration, water supply, water quality, wildlife of the region, natural history of Los Angeles, settlement history of Los Angeles, and cultural history of local neighborhoods. Topic selection should consider the content of other interpretive signs and displays within the river system and the unique features of the project site.

#### **Location and Placement**

Locations for interpretive signs will be determined by the park or trail owner/operator. Suggested locations include overlook areas, bulb-out areas off the main trails, and major river parks and access points. Locations should be appropriate to the topic selection, and provide views of the topic, if applicable. Seating, trash receptacles, water fountains and other amenities may also be provided with interpretive signage. Sign locations should not obstruct views into the park or of scenic vistas.

#### **Standard Sign Features**

The guidelines shown on the following page for interpretive signs were designed to provide flexibility for the individual sign designers. Consistent to all interpretive signs are the title location, size, color and font, and the size and location of the heron logo. See Figure 3.4.1.

For ease of sign layout, a grid system is recommended and will standardize sign layout. Text, photographs, maps and illustrations should be arranged on the grid at the discretion of the designer. This system is similar to the National Park Service's *Wayside Exhibit Guidelines*.

#### **Installation**

Installation should follow guidelines in Chapter 4.



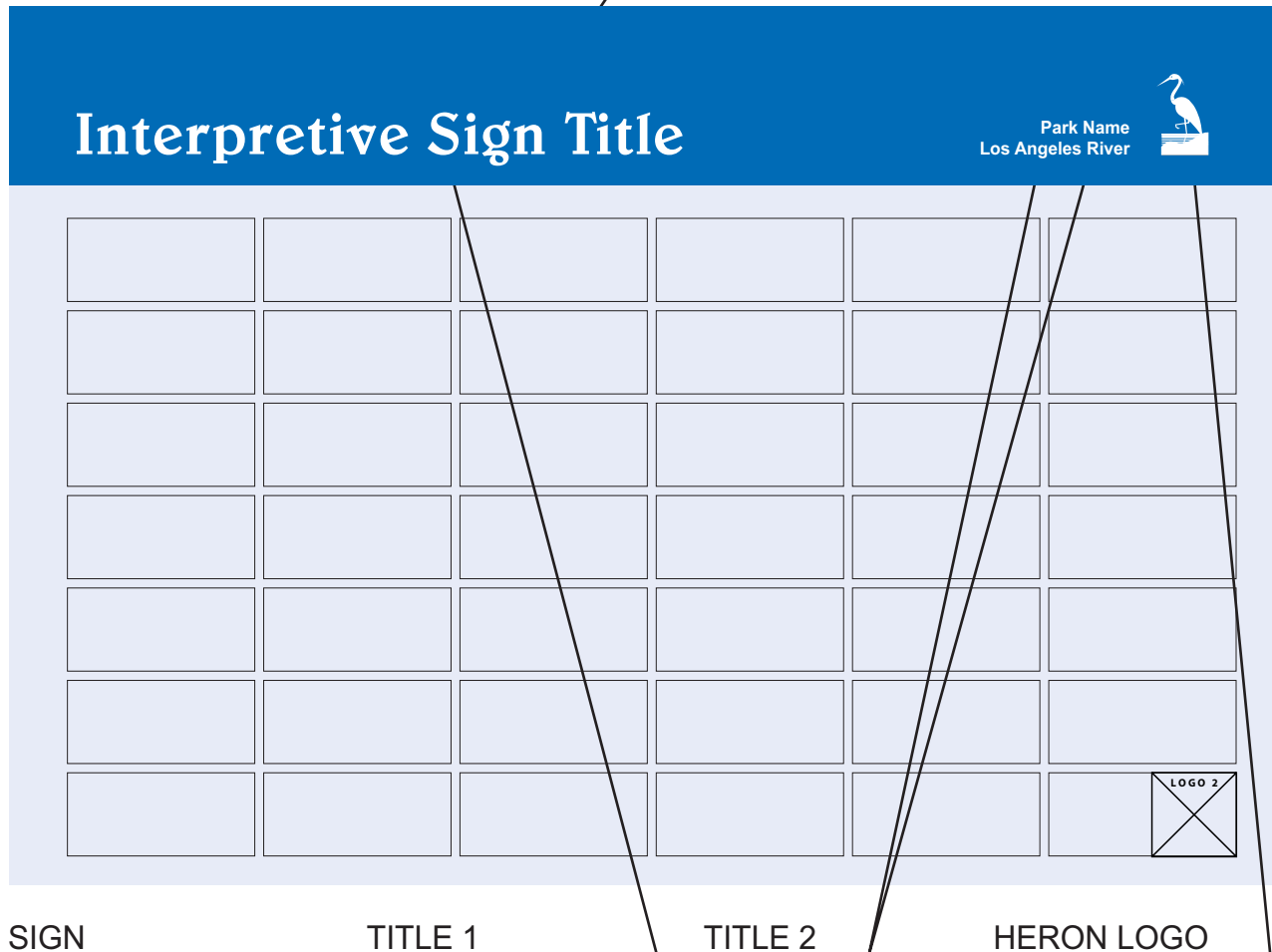
### 3.4.1

# Interpretive Sign Specifications

## TOP STRIPE

Color: Pantone® 293 at 100%

Size: 4-3/4" Height



## SIGN SPECIFICATIONS

Height: 24"

Width: 36"

Material: UV-resistant ink plot, mounted on 1 mil Sintra.

Special: Laminate wrapped to the back of sign. Use replacable Lexan cover for vandalism protection.

Background Color:  
Pantone® 293 at 8%

# TITLE 1

Font: Belwe medium

Size: 120 point

Color: White

Position: Left justify,  
offset 1-5/8" from left  
edge and 2-3/4" from  
top edge

## LAYOUT

Grid cells = 2.5" Ht. x  
5.25" W. with 1/4" gap  
between boxes in each  
direction

## TITLE 2

Font: Arial

Size: 36 point

Color: White

Position: Right  
justify 7/8" from  
Heron Logo. Align  
bottom line 7/8"  
from edge of Top  
Stripe

## HERON LOGO

Size: 2.25" Height

Color: White

Position: Offset 1-5/8" from right and top edges of Top Stripe

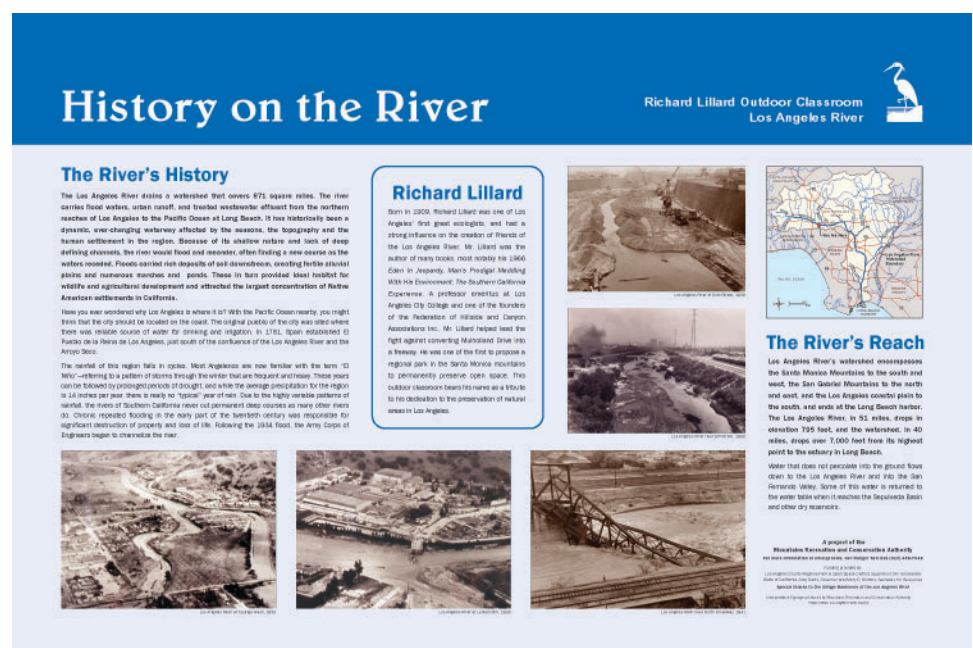
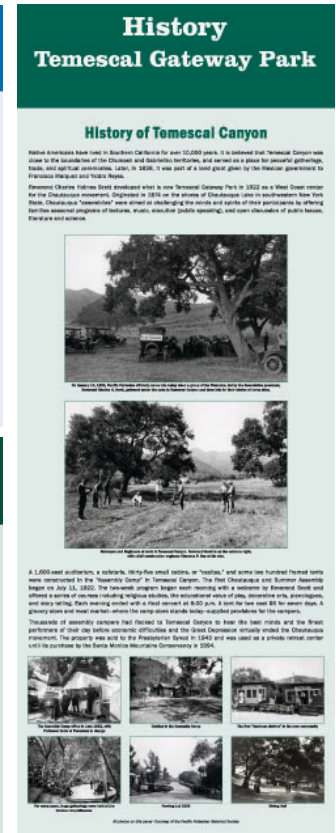
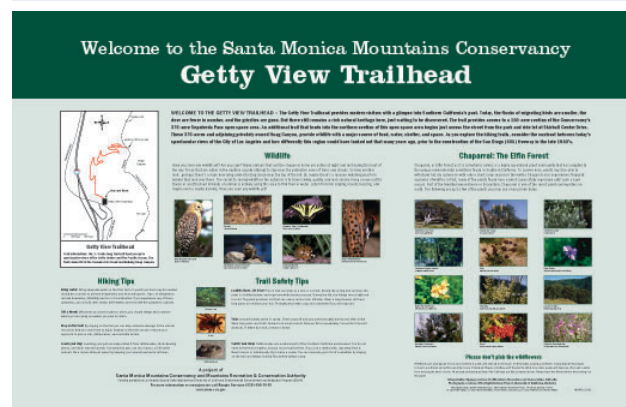
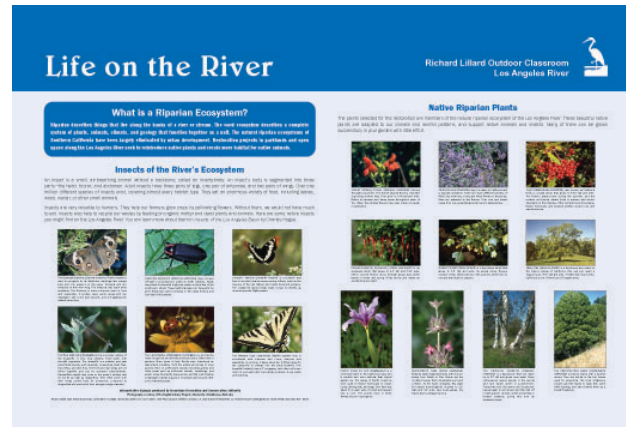
LOGO 2

Optional.

Size: 2-1/2" maximum

Position: Align to  
bottom right corner

### 3.4.2 Example: Interpretive Signs



### *Warning and Safety Signs*

#### 3.5 Purpose

Warning signs are used to warn park and trail users of dangerous conditions, or to inform bicyclists and drivers of regulations and upcoming conditions. Typically, they are diamond-shaped with pictograms and little or no text.

Other types of warning signs may include text explaining potential dangers, such as poison oak or rattlesnakes.

For signs warning users of the river's flood danger, see Figure 3.6.2.

#### Location and Placement

Locations for warning signs will be determined by park-owning agencies, following uniform traffic standards and the MUTCD. Signs will be located along the Bikeways, at access points, and within river parks as needed to inform visitors.

#### Standard Sign Features

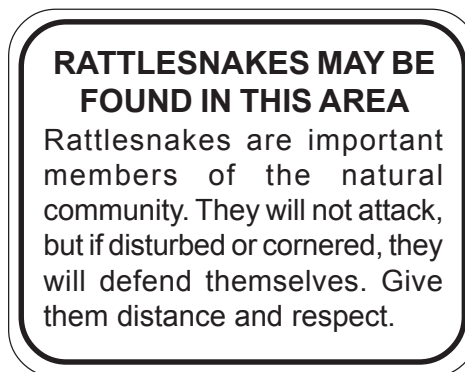
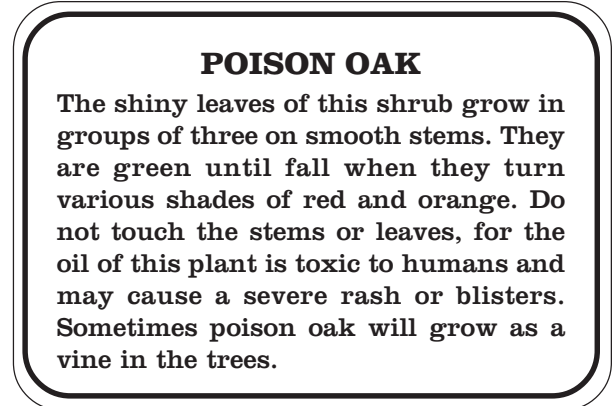
Follow standard guidelines of the appropriate regulatory agency for color, size, content and materials. Note that signs along the Bikeway and pedestrian trails do not need to be as large as signs on vehicular routes.

#### Installation

Installation should follow guidelines in Chapter 4.

## 3.5.1

Example: Warning  
and Safety Signs



### 3.6 Purpose

#### *Regulatory Signs*

Regulatory signs are used to alert park and trail users to the rules and regulations in effect within river parks, on the Bikeways and on shared trails. They are typically placed at or near park entrances or access points. Under the California Public Resources Code, rules must be posted in order to be enforced by patrolling park rangers and police officers.

#### **Location and Placement**

Locations for regulatory signs will be determined by park-owning agencies. Suggested placement is near entrances and parking, with frequency of one per access point. All visitors should be able to see the regulatory signs as they enter the Bikeway, river parks, or other trails. Litter and vandalism should be specifically identified as a serious problem and infraction.

Regulatory signs should be placed where they do not interfere with the views of the river and park features. Signs warning users of flood danger should be placed on gates or fences at entrances to the Greenway and trails. To prevent trespass, signs should be posted at access points informing trail users of adjacent private property and instructing them to respect private lands by staying on the trail. Trail signs that are located on public and private property boundaries should inform trail users when they are entering and leaving private lands.

#### **Standard Sign Features**

Wording for regulatory signs is not included in this manual; each regulatory agency must supply their own text for signs. Text will vary between trail types, e.g. equestrian trails will have different regulations than shared-use or bicycle trails. The appearance and installation of regulatory signs should match Informational Signs in the same area. See Figure 3.6.1. The MUTCD includes examples of other regulatory signs.

Suggested regulations include:

- Park open sunrise to sunset.
- No smoking or fires.
- No alcoholic beverages.
- No littering or dumping.
- No unauthorized vehicle use.
- No defacing or destroying property.
- Dogs must be on leash, under control and cleaned up after.
- Possession of firearms, dangerous weapons prohibited.
- River and trail closed during storm events.

#### **Installation**

Installation should follow guidelines in Chapter 4.

## 3.6.1

Regulatory Sign  
(with rules)  
SpecificationsSIGN  
SPECIFICATIONS

Height: 48"

Width: 40"

Material: Aluminum  
0.080 thickness with  
3M-1150 Anti-  
Graffiti Overlay  
coatingSpecial:  
Rounded corners,  
3" radius.Background Image:  
None.Color: Match  
PMS 343 (green)TITLE 1Text: "Los Angeles  
River"Font: Belwe  
medium

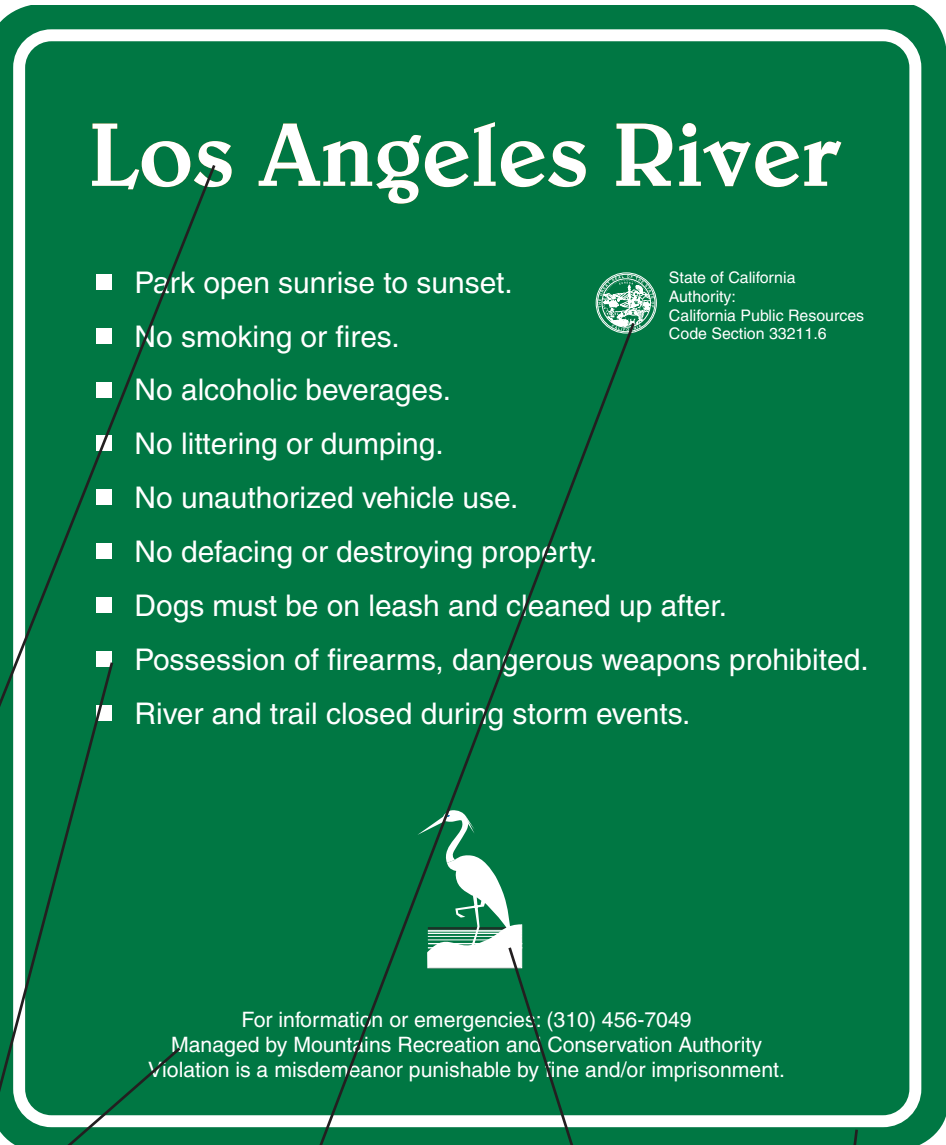
Size: 2.6" Height

Color: White

Position: Centered,  
3" below top borderREGULATION TEXTText: Determined by  
operating agency  
Font: Arial / Helvetica  
Size: 0.5"-2". Adjust  
as needed to fit  
space

Color: White

Position: Left

justified, aligned to  
left edge of Title 1,  
minimum 2.5" below  
Title 1AGENCY LOGOOptional  
Regulatory Agency  
Logo  
Size: 3" maximum  
Color: White  
Position: 1" minimum  
from borderHERON LOGOSize: 6.5" Height  
maximum  
Color: White  
Position: CenteredBORDERSize: 0.5" (36 point)  
Color: White  
Position: 1" from  
edges  
Special: 2" radius  
corners



## 3.6.2

Example:  
Regulatory Signs

**DO NOT ENTER THE LOS ANGELES RIVER  
GREENWAY DURING THE THREAT OF RAIN,  
RAIN, OR HIGH WATER FLOWS**

**RECREATIONAL FEATURES  
(Bike paths, Parks, Playgrounds, etc.)  
ARE CLOSED DURING THESE TIMES**

**NEVER ENTER THE RIVERBED**

QUESTIONS? CONTACT THE COUNTY OF LOS ANGELES  
DEPARTMENT OF PUBLIC WORKS AT (800) 675-4357

**NO ENTRY - NO TRESPASSING**  
  
IN THIS AREA, THE  
LOS ANGELES RIVER GREENWAY  
**IS CURRENTLY CLOSED**  
TO THE PUBLIC



QUESTIONS? CONTACT THE COUNTY OF LOS ANGELES  
DEPARTMENT OF PUBLIC WORKS AT (800) 675-4357

**Park Open  
Sunrise to Sunset**

**NO SMOKING**

### 3.7 Purpose

#### *Destination Signs*

Destination signs and distance markers will be used along the bikeway to demarcate the distance between the headwaters and the outfall into the ocean, the distance to destinations along the Bikeway, and the location of City boundaries along the Bikeway. Distance markers are discussed in Section 3.8.

Refer to the MUTCD for additional requirements.

#### **Location and Placement**

Destination signs should be placed near each major access point, and at a frequency of no less than two miles. Sign installation shall be double-sided, so that one sign pole will serve bikers and pedestrians in each direction.

Along the Bikeway, signs should be placed at city boundaries marking the boundary of each city and/or neighborhood. Signs should be located where they do not interfere with the views of the river and park features.

#### **Standard Sign Features**

The colors, fonts and layout of destination signs are intended to be similar to Informational Signs, but generally smaller. See Figure 3.7.1.

#### **Installation**

Installation should follow guidelines in Chapter 4.



## 3.7.1

Destination Sign  
SpecificationsSIGN  
SPECIFICATIONS

Height: 32"

Width: 26.75"

Material: Aluminum  
0.080 thickness with  
3M-1150 Anti-Graffiti  
Overlay

coatingSpecial:

Rounded corners,  
0.75" radius.Background Image:  
River graphic.

Color: Match

PMS 293 (blue)

PMS 343 (green)

TITLE 1Text: "Los Angeles  
River"

Font: Belwe medium

Size: 1.75" Height

Color: White

Position: Centered,  
2.25" below top  
borderTITLE 2

Text: Name of trail

Font: Belwe medium

Size: 1.75" Height

Color: White

Position: Centered,  
2" below Title 1INFORMATIONAL TEXTText: Destination  
information to be  
determined by operating  
agency

Font: Arial / Helvetica

Size: 1" - 1.25" Height

Color: White

Position: Justified left  
and rightHERON LOGOSize: 6" Height  
maximum

Color: White

Position:  
Centered, 1.25"  
minimum from  
bottom borderBORDERSize: 24 point  
Color: White  
Position: 0.75"  
from edges  
Special: 0.75"  
radius corners

3.7.2

Boundary Sign  
Specifications

SIGN  
SPECIFICATIONS

Height: 32"  
Width: 26.75"  
Material: Aluminum  
0.080 thickness with  
3M-1150 Anti-  
Graffiti Overlay  
coatingSpecial:  
Rounded corners,  
0.75" radius.  
Background Image:  
River graphic.

TITLE 1

Text: "Los Angeles  
River"  
Font: Belwe  
medium  
Size: 183 point  
Color: White  
Position: Centered,  
3.25" below top  
border

TITLE 2

Text: Name of city  
Font: Belwe  
medium  
Size: 135-183 point.  
Adjust as needed to  
fit space  
Color: White  
Position: Centered,  
minimum 2.5"  
below Title 1

INFORMATIONAL TEXT

Text: Varies  
Font: Arial / Helvetica  
Size: 72-108 point  
Color: White  
Position: Centered

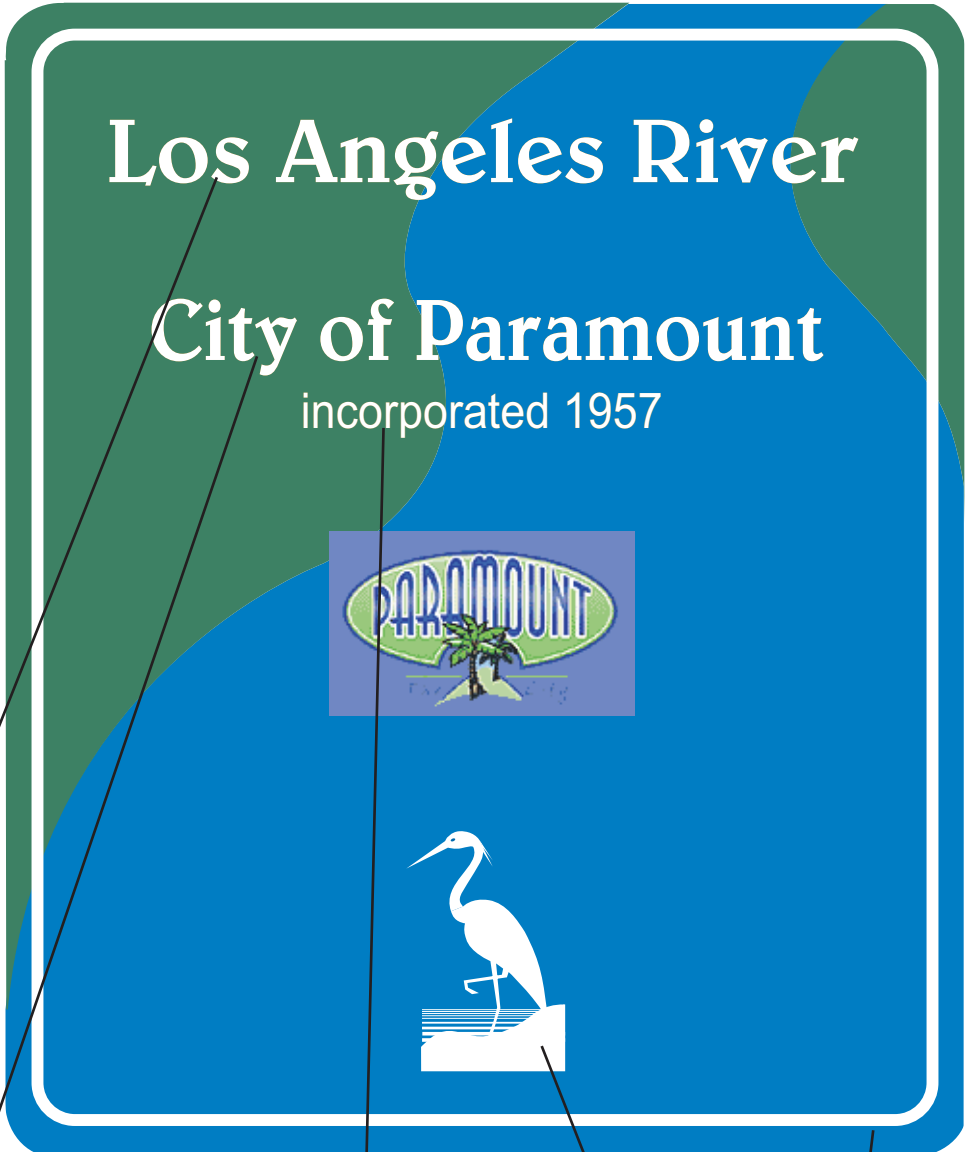
CITY LOGOS, if used, to  
be centered. Size should  
be roughly equal to that of  
the heron logo.

HERON LOGO

Size: 5" Height  
minimum, 9"  
maximum  
Position: Centered,  
1.25" minimum  
from bottom border

BORDER

Size: 24 point  
Color: White  
Position: 0.75" from  
edges  
Special: 0.75"  
radius corners



### 3.8 Purpose

#### *Bikeway Distance Markers*

Distance markers will be used along the Los Angeles River Bikeway to demarcate the distance between the headwaters and the outfall into the ocean. They are similar to freeway mile markers.

#### Location and Placement

Distance markers shall be incorporated into the Bikeway pavement at each mile. The precise location of each destination/distance marker, and the appropriate numbering system, will be determined by the City of Los Angeles (or other entity) during the preparation of construction documents for the Bikeway.

#### Standard Features

Bikeway Distance Markers should consist of the same material as other striping specified for the bikeway. This material can be either paint or thermoplastic paint (contractor-grade acrylic striping paint, alkyd, or chlorinated rubber striping paint). Consider skid resistance, reflectivity, and durability when selecting materials, as well as ADA requirements for visibility. Refer to *State of California, Department of Transportation specifications for Thermoplastic Traffic Striping Material and Traffic Striping, Signing and Pavement Markings* as necessary.

Distance Markers shall be applied with a custom stencil incorporating the artwork specified herein. Artwork for the pattern is available for the County of Los Angeles Department of Public Works.

The color of distance markers shall be white.

The stencil includes a blank area for the mile numbers. Numbers shall be applied using standard stencils in a simple, basic font such as Arial.

#### Installation

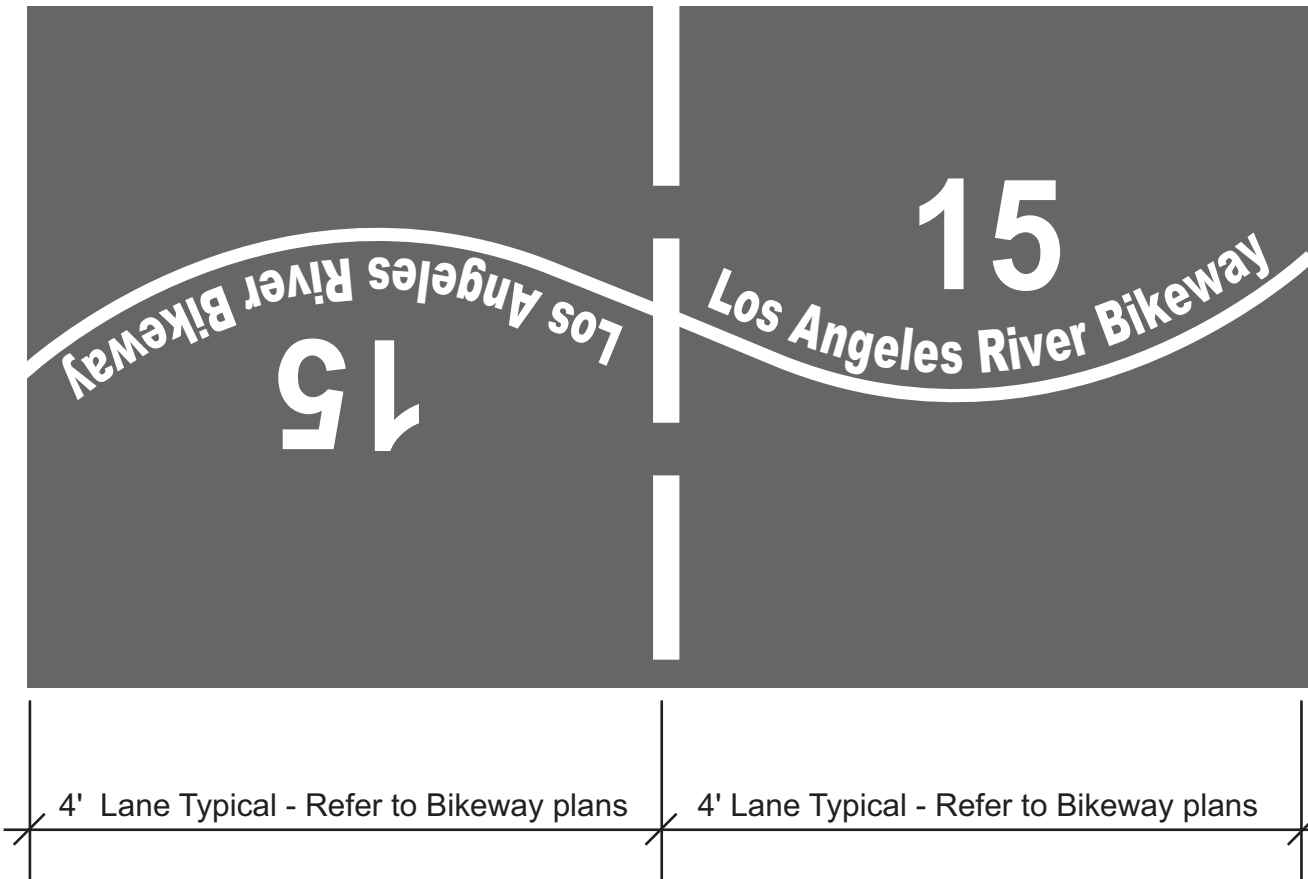
Refer to manufacturer's specifications for installation recommendations and procedures. In addition, consider the following guidelines:

1. New asphalt surfaces vary widely in the length of time required for curing before painting. Ensure that pavement is cured before applying the Bikeway Distance Markers.
2. Apply Distance Markers only in dry weather.
3. Do not place Distance Markers over unsound pavements.
4. Newly marked areas should be barricaded until the marking paint is dried and ready for traffic.

3.8.1 DISTANCE MARKER SPECIFICATIONS

Bikeway Distance Marker Specifications	Material: Paint or thermoplastic paint. Match material used to stripe the Bikeway. Color: White Bikeway Name Text: 3-1/4" Height Mileage Text: 8-1/4" Height
--	---

Refer to Bikeway construction plans for location of markers and specific mileage designation.



### 4.1 Guidelines for installing signs are as follows:

#### *General Guidelines*

All signs must conform to ADA requirements. For standards, refer to California Code of Regulations, Title 24. The code can be downloaded from [http://www.bsc.ca.gov/title\\_24.html](http://www.bsc.ca.gov/title_24.html), or obtained for free at depository libraries located throughout the state.

For all signs, installation methods and materials should follow standard guidelines of the appropriate jurisdiction or regulatory agency(s), if applicable. For signs within municipal right-of-way, signs shall be installed in accordance with the County of Los Angeles standards or the standards of the supervising agency. See Section 1.3 Approvals.

Responsibility for maintaining signs shall lie with the owner/operator of the park or trail. Agencies may have requirements for inventory of signs within their jurisdiction. The Operational Services Division of Los Angeles County Public Works should be notified appropriately of all signs that they will be responsible for maintaining, including past Earth Day and Adopt-a-River signs.

Basic requirements for maintenance are described with the installation details. For additional information, refer to Section 4.5, Graffiti and Vandalism Management.

The installation method chosen should be used consistently within a unit of the Los Angeles River system. For example, one method should be chosen for all signs along the Bikeway or for all signs within a river park. Where one agency owns / operates multiple trails or park facilities, consider using one installation method throughout all facilities for consistency and identity.

Shown on the next pages are different types of sign installation that are appropriate for use in the Los Angeles River system. When choosing an installation method, consider the character of nearby architecture and local history; it may be appropriate to vary installation details to reflect local culture, history and architecture.

The *Landscaping Guidelines and Plant Palettes for the Los Angeles River and Tujunga Wash* contains additional specifications for sign content and placement, as well as examples of installation drawings for stone installation.

## 4.2 *Installation of Aluminum Signs*

Aluminum signs include most Informational, Directional, Warning and Safety, Regulatory, and Destination signs along the Los Angeles River and Tujunga Wash. Informational park entry signs and Regulatory signs are to be installed on a set of wood posts, as shown here. Smaller aluminum signs may also be installed on metal poles per local code.

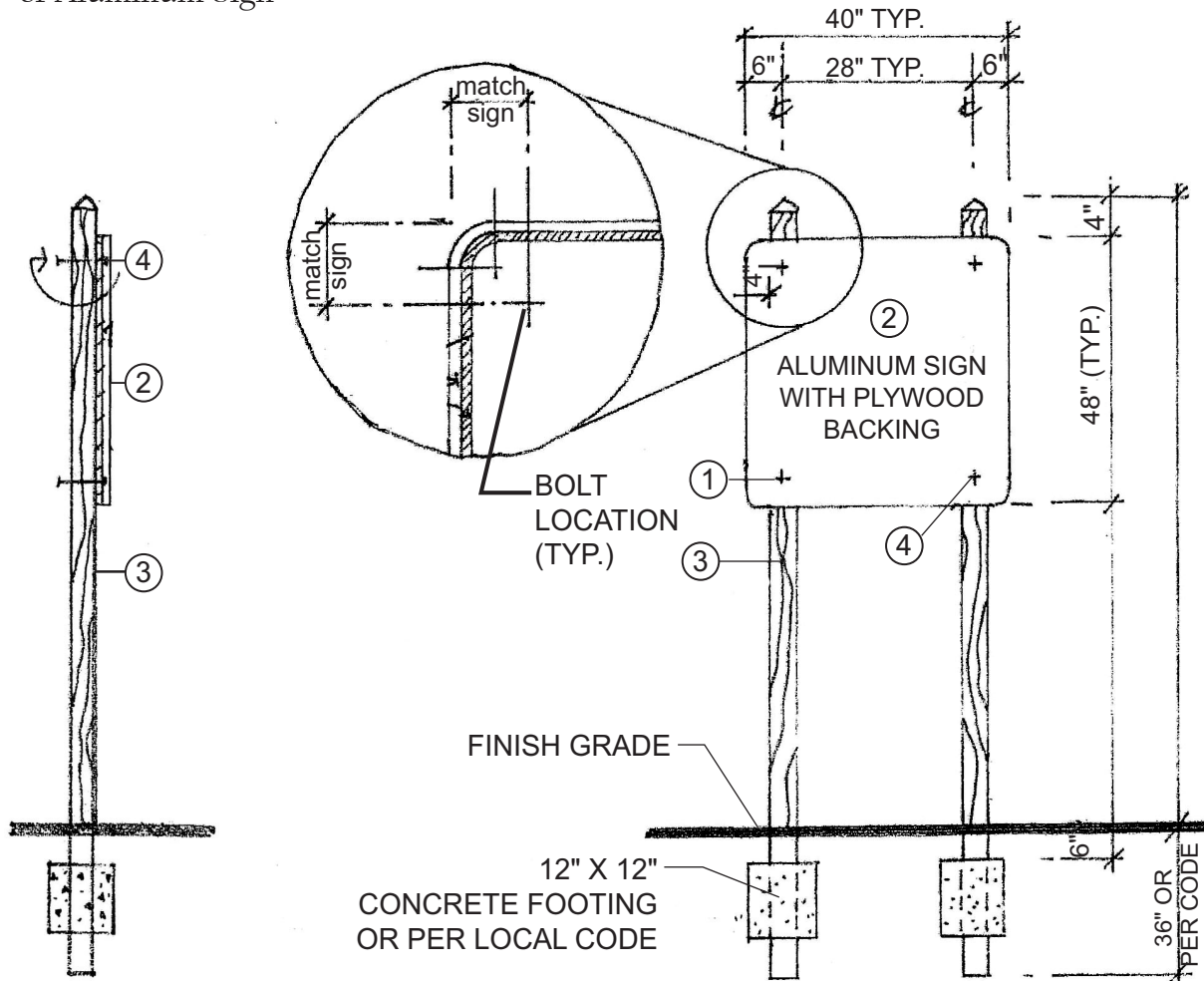
Required maintenance consists of regular inspections for vandalism, cleaning and repair as necessary and periodic replacement. A UV coating on aluminum inhibits fading of sign colors, but aluminum signs likely will need replacement after 5-10 years. Frequent vandalism may shorten the lifespan.





## 4.2.1

### Construction Detail: Standard Installation of Aluminum Sign



#### CODED NOTES:

- |  |   |   |  |
|--|---|---|--|
| <p>① 3/4" Marine Plywood Board. Match size and shape of sign. Paint back, top and sides of board to match posts.</p> | <p>② x Gauge/ 1/4" thick Aluminum Sign with UV coating and graffiti coating</p> | <p>③ 4" X 4" X 10' Posts with wood preservative. Paint dark green to match sign background.</p> | <p>④ Countersink 1/2" square Carriage Bolts &amp; Nuts. Paint bolts to match sign color. Cut back of bolts flush to the posts, cover with wood filler and paint to match post color.</p> |
|--|---|---|--|

### 4.2.1 Standard Installation of Aluminum Sign - Details

Top of post to be  
chamfered.



Exposed bolts to be  
painted to match  
sign color.



Bolts to be cut flush  
with post, area to be  
covered with wood  
filler and painted to  
match post color.



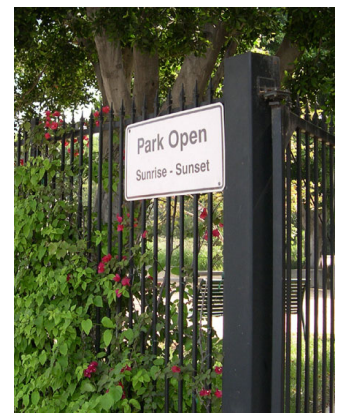
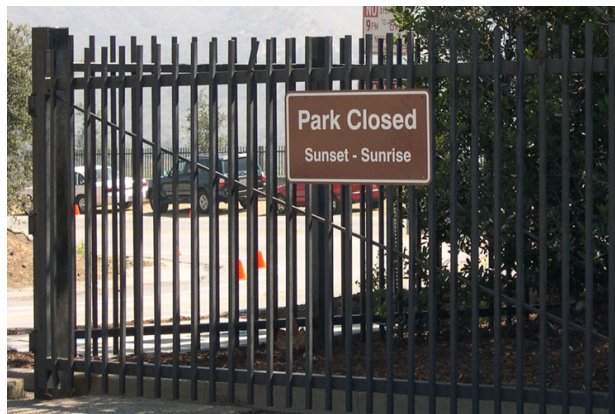
Side of plywood  
backing to be  
painted to match  
back of sign.





### 4.2.2 Variations of Aluminum Sign Installation

Aluminum signs may also be incorporated into large monuments, bolted to fences and/or gates, or bolted to steel posts following LADOT or other agencies' guidelines.



### 4.3 *Installation of Interpretive Signs and Displays*

Interpretive signs and displays are typically installed as trail-side displays or kiosks. Trail-side displays, also called wayside displays, are located at key points along the Los Angeles River Greenway, river parks, and access points. The recommended installation method for wayside displays and kiosks incorporates river rock, but variations including stucco, other types of stone, and simpler mountings are acceptable.

Installation includes a protective cover of clear flexible plastic (Lexan) that protects the interpretive panel from vandalism and wear. A small space of air between the clear cover and the interpretive sign will prohibit condensation from forming on the artwork.

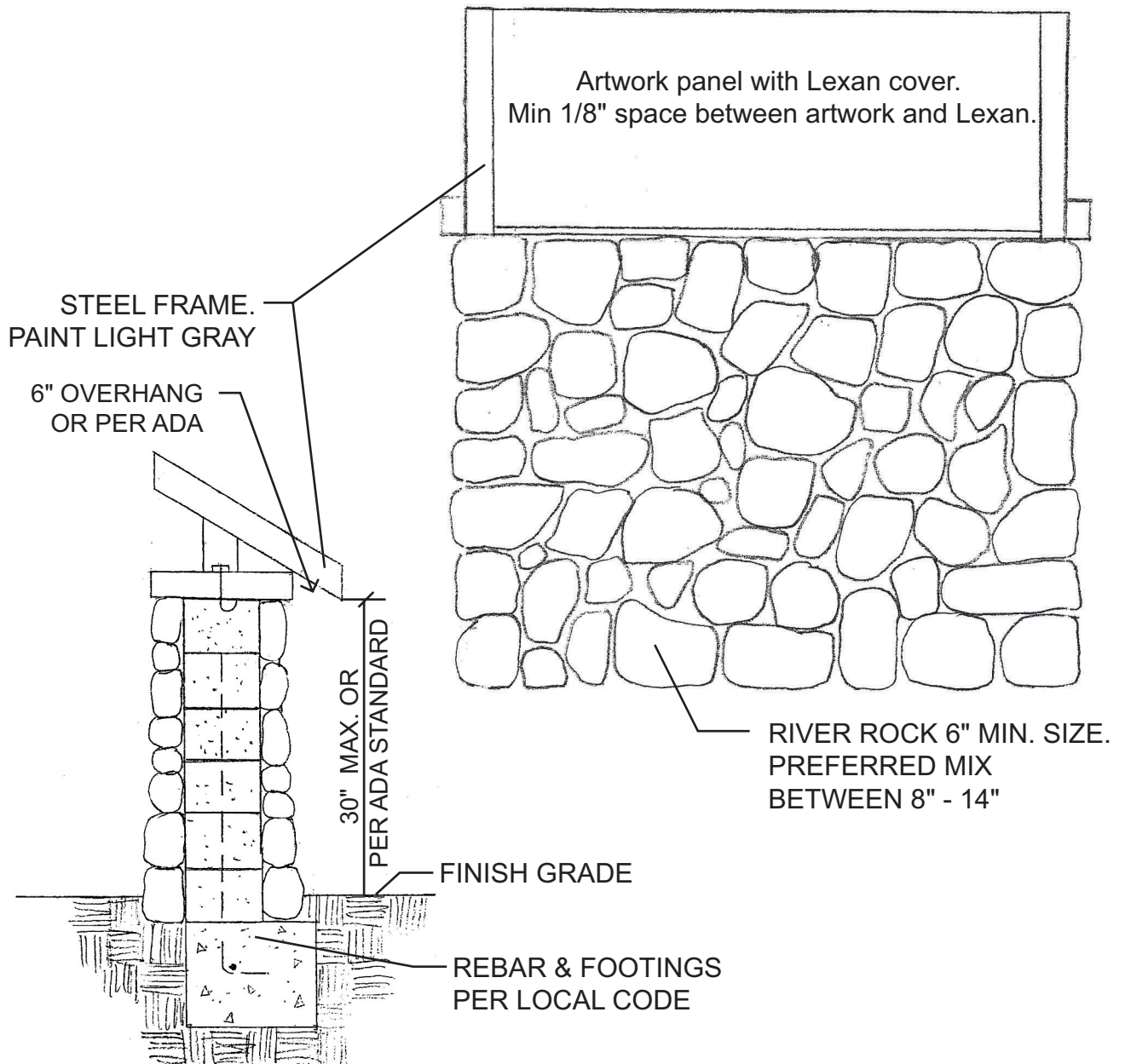
Required maintenance includes regular inspections for vandalism, and periodic replacement of sign boards and protective coverings as necessary. In areas of frequent vandalism, the protective coverings may need to be replaced as often as annually.



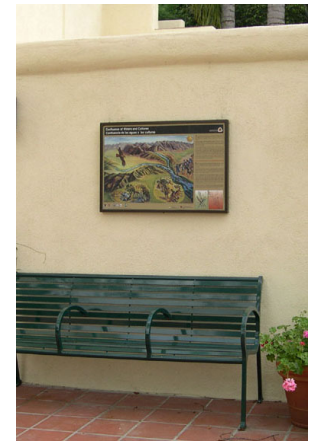


## 4.3.1

### Construction Detail: Trailside Display

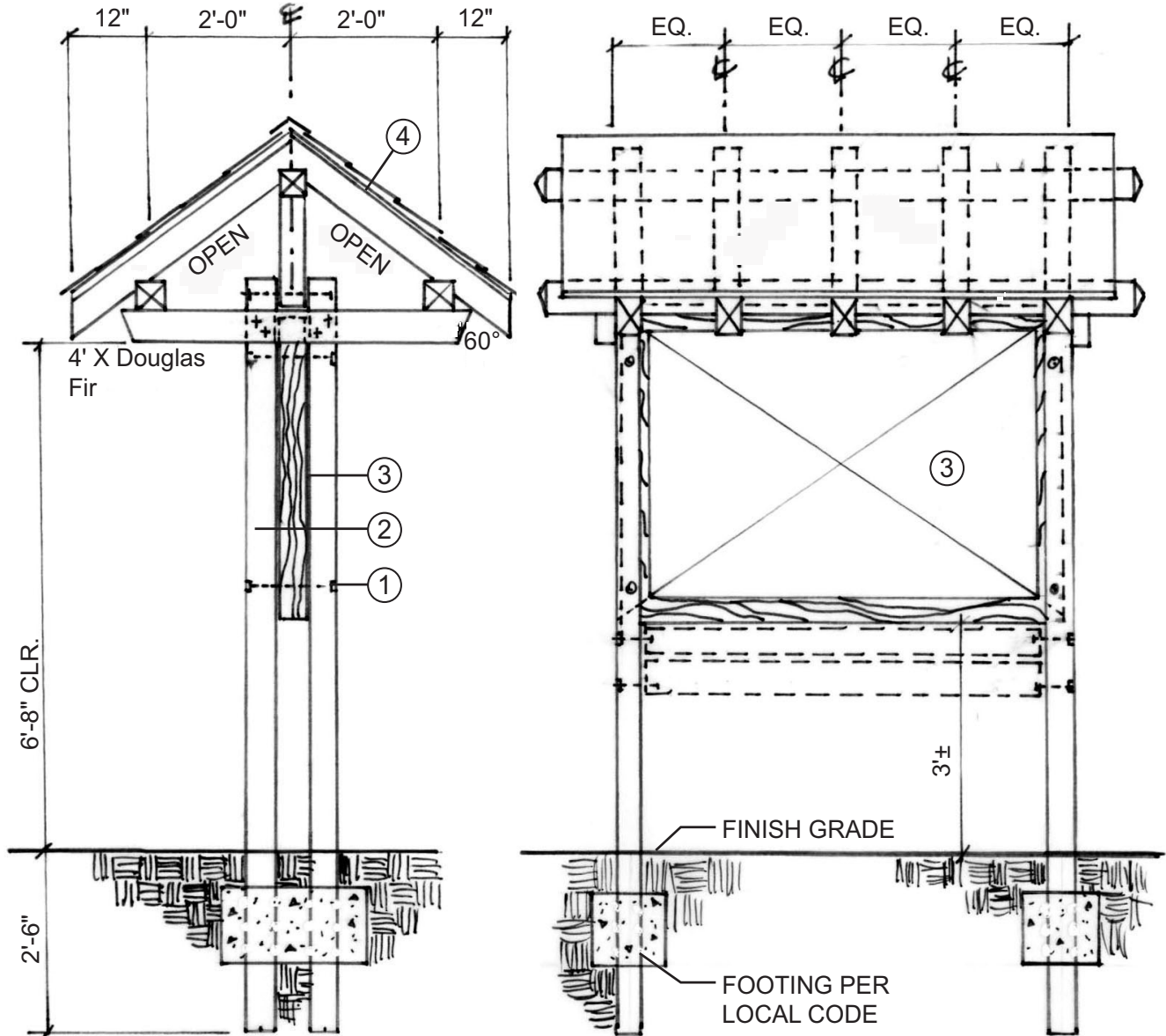


### 4.3.2 Variations of Interpretive Sign Installation



## 4.3.3

### Construction Detail: Standard Kiosk



#### CODED NOTES:

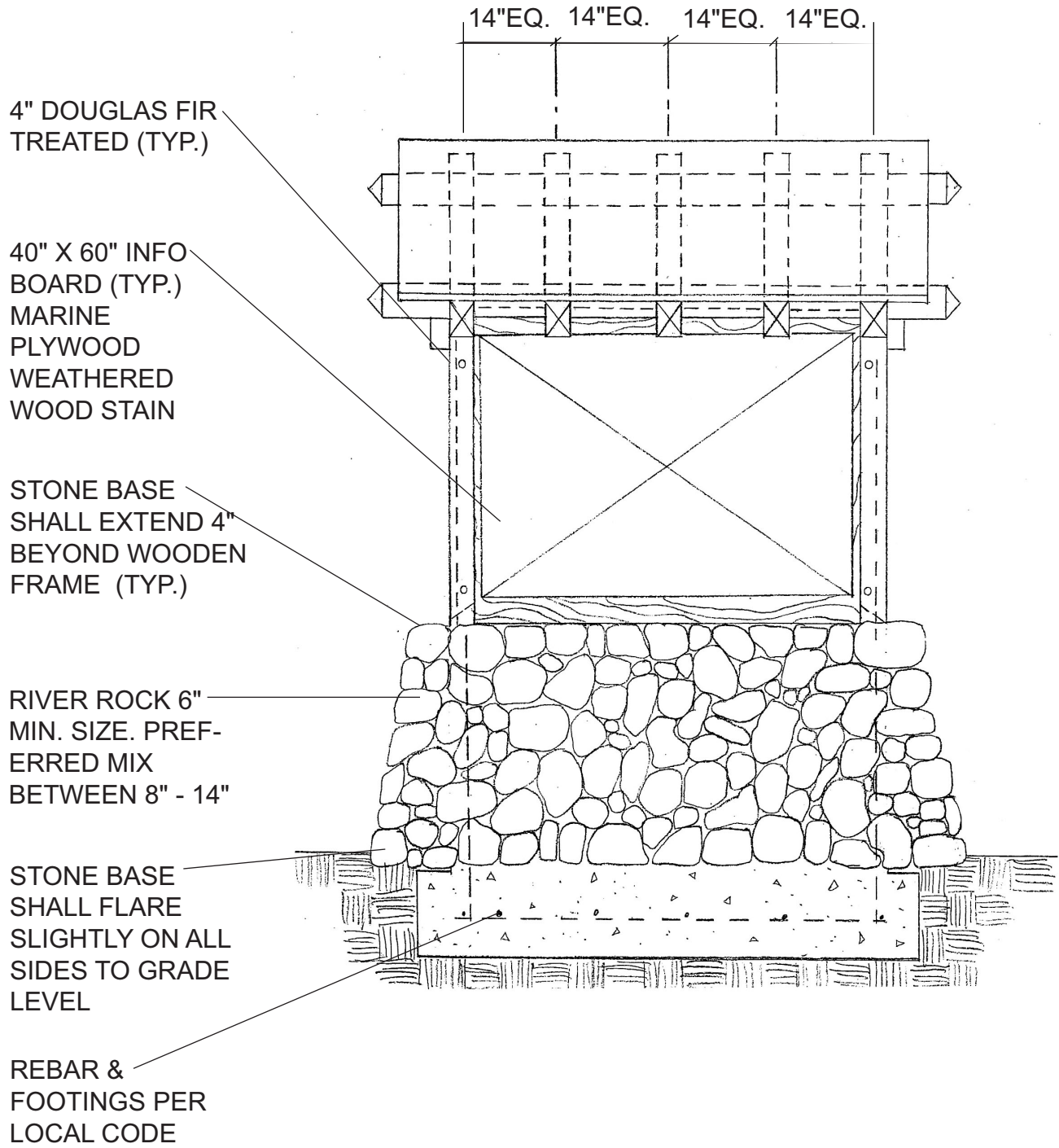
- |  |  |  |  |
|--|--|--|--|
| <p>① Countersink 3/8" Carriage Bolt &amp; cut flush to post. Patch with wood filler.</p> | <p>② 4" Douglas Fir treated. Weathered wood stain.</p> | <p>③ Sandwich 40" X 60" Artwork board with Lexan covering. Leave min. 1/8" space between Lexan and artwork</p> | <p>④ GAF - Fiberglass Shingles Dark gray color, Tar-paper, Marine Plywood.</p> |
|--|--|--|--|

Detail developed after Troller-Mayer Associates drawing, 1998



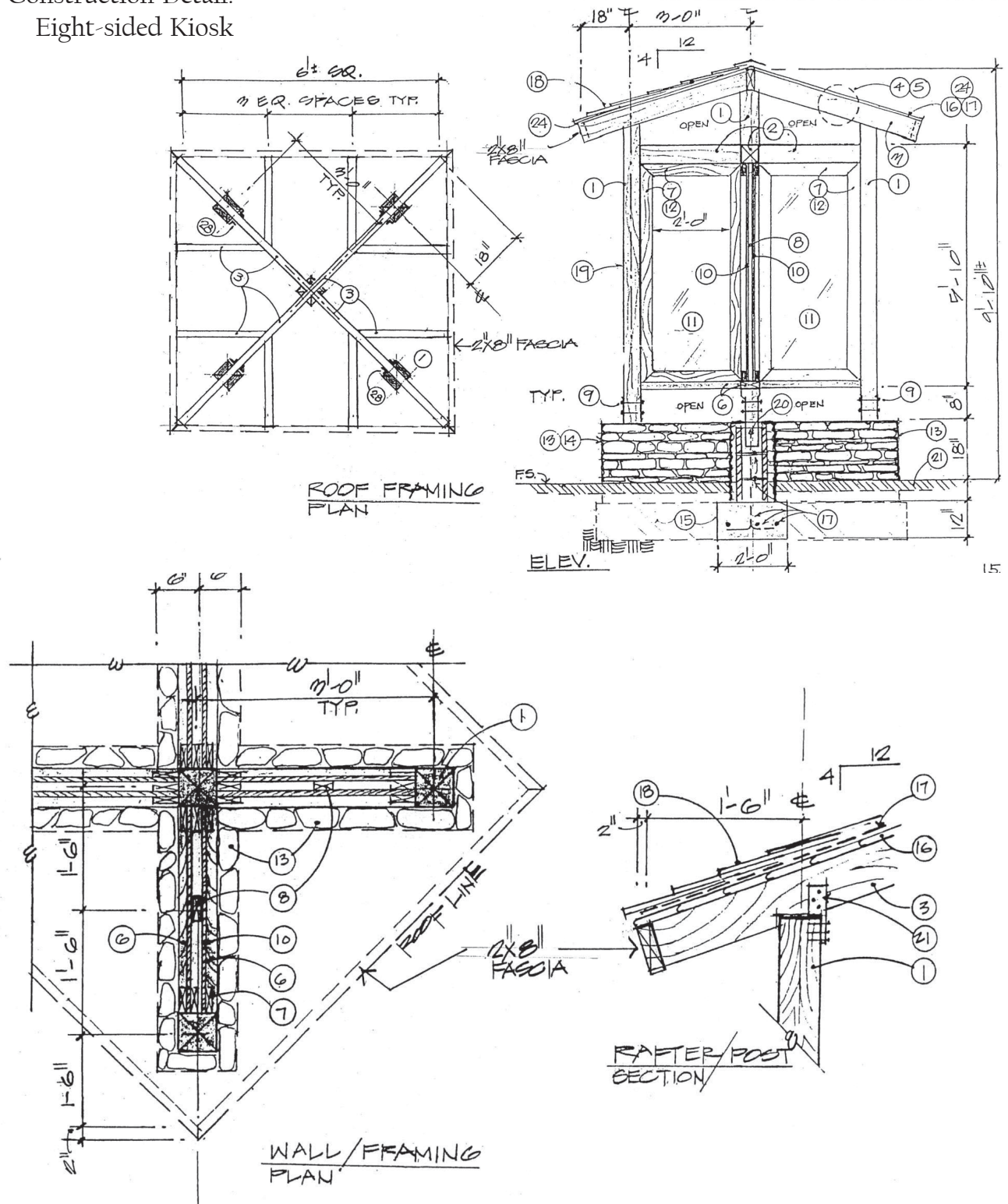
## 4.3.4

Construction Detail:  
Standard Kiosk with  
River Rock Base



## 4.3.5

### Construction Detail: Eight-sided Kiosk



Detail by Troller-Mayer Associates, 1998

4.3.5  
Construction Detail:  
Eight-sided Kiosk  
(notes)

**KIOSK CONSTRUCTION LEGEND**

1. 6" x 6" ROUGH SAWN POST – NOTCH FOR RAFTER
2. 6" x 6" ROUGH SAWN BEAM
3. 4" x 6" ROUGH SAWN RAFTERS
4. SEE RAFTER PLAN
5. SEE ROOF PLAN
6. 2" x 6" R.S. WOOD BASE
7. 1" x 4" R.S. FRAMING MITER JOINTS
8. 2" x 4" R.S. CASING
9. 4" x 6" SIMPSON COL. BASE # CB46
10. 2'-6" x 5'-7" FORMICA BACKED W/ 3/8" PLY, COLOR TO BE SELECTED BY MRCA
11. 1/4" u.v. FILTERED LEXAN SEPARATED FROM FORMICA W/ RUBBER WASHERS
12. HEX WOOD SCREWS @ 12" O.C. ±, SCREW THROUGH WASHERS CENTER IN 1" x 4" FRAMING
13. CONC. BLOCK W/ FLAGSTONE, DRYSTACK (COLOR SELECTED BY MRCA)
14. 8" CONC. BLOCK, GROUT ALL CELLS, REBAR PER PLAN
15. POURED IN PLACE CONC. FOOTING
16. 1" x 6" ROOF SHEETING T. & G.
17. 90# FELT
18. TILE ROOF: MONIER "CEDARLIGHT", COLOR: "IRONWOOD", #320050 OR EQUAL
19. WOOD FINISH: STAIN PRIOR, TOUCH-UP AFTER FABRICATION, COLOR: AN OLYMPIC STAIN, COLOR SELECTED BY MRCA
20. #4 BAR THRU CB HARDWARE
21. SIMPSON A35 EA. SIDE TYPICAL
22. SIMPSON ST22 @ RAFTERS
23. FLASHING – MATCH WOOD COLOR



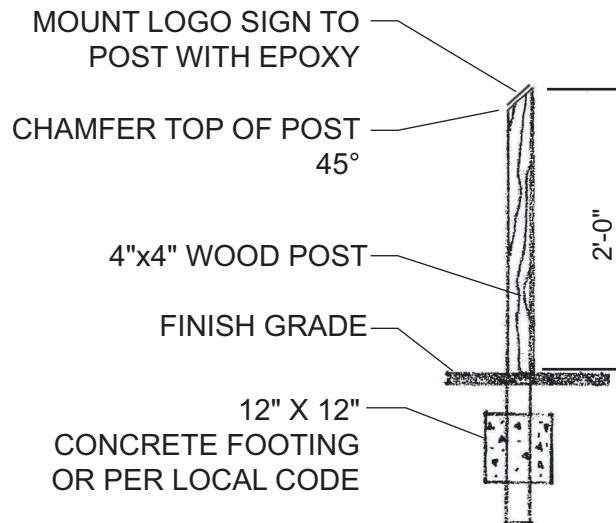
### 4.4 Installation of Trail Markers

Trail markers are used along the Juan Bautista de Anza National Historic Trail. The National Park Service's guidelines for the trail are incorporated in Appendix A. 3" aluminum logo signs are mounted onto 4"x4" wood posts. Installation along the Los Angeles River portion of the trail may incorporate river rock at the base of the post as shown below.

Required maintenance of trail markers consists of regular inspections for vandalism and periodic replacement as necessary.



#### 4.4.1 Construction Detail: Standard Installation of Trail Marker



### *4.5 Graffiti and Vandalism Management*

Many signs installed along the Los Angeles River Greenway will likely be vandalized at some point. Typical vandalism may be spray paint, etching or other destruction. Regular and diligent inspection of all signs is recommended on a weekly basis. At the time of inspection, if vandalism is found it should be immediately repaired or cleaned.

Signs installed higher than 7' are less likely to be vandalized. This height should be utilized where appropriate.

Aluminum signs are manufactured with an anti-graffiti coating. The coating allows spray paint to be cleaned off using commercial products such as Goof-off™, Graffiti Amigo™, or equal. These products are applied directly to the sign to wipe off spray paint.

Interpretive signs are installed with a clear plastic cover (Lexan). This cover can be cleaned and replaced as needed for minimal cost, protecting the more expensive artwork panels. Spray cleaner on affected areas and wash away graffiti with low to medium water pressure. For protection from graffiti vandalism, apply a very small amount of Anti Graffiti Barrier™ (or equal) to affected areas. Anti graffiti Barrier™ (or equal) can be used to add a clear protective coating to painted wood, aluminum, metal, masonry, bricks, concrete, and stone. It is a water borne, U.V. resistant, cross linking, acrylic coating, formulated to prevent graffiti from adhering to exterior surfaces, while producing a translucent finish. Apply two coats with either a roller or sprayer onto a clean wall and let dry.

#### 4.6 *Location of Signs*

Signs shall be located where they will best present the information to the intended park user. Signs installed in highly visible areas will reinforce the public's awareness of the Los Angeles River Greenway. Access points to the Greenway may require park entry signs in more than one location to serve visitors approaching both from the Greenway itself as well as the street. ADA requirements for placement, height and facing must be followed.

Signs may be posted on fences and gates, however do not post signs on artistic or sculptural gates. Where art gates are present, signs shall be posted on poles or something else besides on the gates. Signs should not be placed where they obstruct scenic views of the river.

- 4.6.1 Below left: Sign located at Park Entry, facing oncoming traffic.  
Below right: Sign located at park entry along Greenway facing the trail.  
Bottom left: Sign located next to art gates, mounted separately.  
Bottom right: Sign located at park entry, facing oncoming traffic and thoughtfully incorporated into park layout.





- 
- Agency Contacts* **Los Angeles County Department of Public Works**  
900 S. Fremont Avenue  
Alhambra, California 91803  
(626) 458-4300
- Mountains Recreation and Conservation Authority**  
570 West Avenue 26, Suite 100  
Los Angeles, California 90065  
(323) 221-9944
- Graphics,  
Font and Logo* Contact the Los Angeles County Department of Public Works <<http://ladpw.org>> (626) 458-4300
- Manufacturer  
Contacts* Contacts are provided for information only and are not endorsed in any way
- Aluminum Signs**  
Western Highway 800-479-3783  
Fossil Graphics 631-254-9200
- Manufacturer contacts - Bikeway Distance Marker Stencils**  
Advance Traffic Markings 252-536-2574 x.123 or email to <[advance@trafficmarking.com](mailto:advance@trafficmarking.com)>  
StencilFab Corporation 888-229-5200 or email to <[sales@stencilfab.com](mailto:sales@stencilfab.com)>
- Graffiti Coatings and Removers**  
Doctor Graffiti: Contact Staumbaugh & Associates at 1-866-730-3303 for Graffiti Amigo™ and Anti Graffiti Barrier™. <<http://www.doctorgraffiti.ca/indexen.htm>>  
Goof-off™: Available at hardware stores or <<http://www.goof-off.com/>>
- References* *Caltrans Chapter 1000 Highway Manual*  
County of Los Angeles Department of Public Works. *Landscaping Guidelines and Plant Palettes for the Los Angeles River and Tujunga Wash*.  
County of Los Angeles Department of Public Works. *Landscaping Maintenance and Operations Manual*.  
Federal Highway Administration, 2000. *Manual on Uniform Traffic Control Devices: Part 9, Traffic Controls for Bicycle Facilities*. US Dept of Transportation, Washington, DC. <<http://mutcd.fhwa.dot.gov/kno-millennium.htm>>  
National Park Service, April 1996. *Juan Bautista De Anza National Historic Trail Comprehensive Management and Use Plan*. US Dept of the Interior, Harpers Ferry, WV.  
National Park Service, 1998. *Wayside Exhibit Guidelines: The ABCs of Planning, Design, and Fabrication*. US Dept of the Interior, Harpers Ferry, WV.

# Acknowledgments

---

44

## *Los Angeles River Master Plan Advisory Committee*

### Sign Guidelines Sub-committee Members

Rorie Nazareth	County of Los Angeles, Supervisorial District 1
Maria Chong-Castillo	County of Los Angeles, Supervisorial District 3
Curt Pederson	County of Los Angeles, Supervisorial District 4
Greg Herrmann	Arroyo Verdugo Council of Governments
Richard Powers	Gateways Cities Council of Governments
Michelle Mowery	City of Los Angeles Department of Transportation
Jim Donovan	National Park Service
Diane Kane, Bill Nagle	California Department of Transportation
Joe Linton	Friends of the Los Angeles River
Nishith Dhandra	North East Trees
Melanie Winter	The River Project
Maria Lopez	County of Los Angeles Department of Public Works
Lisa Soghor, Cara McLane	Mountains Recreation & Conservation Authority

## *Graphic Design*

Mavis Ong, Cara McLane	Mountains Recreation & Conservation Authority
------------------------	---

- A. Juan Bautista de Anza National Historic Trail
- B. Proposition 12 and 13 Requirements

### *Juan Bautista de Anza National Historic Trail*

The Juan Bautista De Anza National Historic Trail commemorates the route followed by Anza in 1775-76 when he led a contingent of 30 soldiers and their families to found a presidio and mission on the San Francisco Bay. Along the trail route, the visitor can experience the varied landscapes similar to those the expedition saw; learn the stories of the expedition, its members, and descendants; better understand the American Indian role in the expedition and the diversity of their cultures; and appreciate the extent of the effects of Spanish colonial settlement of Arizona and California.

The *Comprehensive Management and Use Plan* for the trail contains guidelines for signs and trail markers. Those guidelines are reprinted here for informational purposes only, and are taken from the April 1996 edition of the plan. Users should consult the plan, available at <http://www.nps.gov/juba/>, to confirm the guidelines.

#### **National Park Service**

#### **Juan Bautista De Anza National Historic Trail Marker Guidelines and Signs**

#### **Logo Protection**

The National Trails System trail marker logos are established under authority of section 3(a)(4) of the National Trails System Act. As official insignia of the United States Government, they are protected from unauthorized uses, manufacture, and sale under United State Code (USC), Volume 18, section 701. All uses of these logo trail markers must be approved and authorized in writing by the federal administrator designated for the trail involved. For use of the Juan Bautista de Anza National Historic Trail logo, contact Meredith Kaplan, National Park Service, 600 Harrison Street, Suite 600, San Francisco, CA 94107; telephone: 415-427-1438; fax: 415-744-4043; e-mail: [meredith\\_kaplan@nps.gov](mailto:meredith_kaplan@nps.gov)

#### **Logo Design**

The pictorial elements are developed as color forms, with line used only as a form in itself. Logos in color version do not use holding lines to delineate the shape of the interior or picture part of the logo; color defines the interior shape. In the black and white version, a gray screen provides the background and defines the interior shape. A black line is used to reinforce the shape of the marker on its outside edge when the marker appears on a light background.

The following Pantone Matching System (PMS) designated colors are an integral part of the design:

PMS 130 yellow-gold



*Juan Bautista de Anza*  
*National Historic Trail*

PMS 185 red

### Marker Lettering

The term “National Historic Trail” is set in the font Helvetica Neue Bold. The trail name is set in the font ITC New Baskerville Bold at a 110% horizontal scale. The size and tracking of the lettering is as follows (intended for Adobe Illustrator 5.5, or higher, digital files). Letter is in sizes of 1/72-inch “points”:

3-inch logo: trail name size is 20.5; “National Historic Trail” size is 10 +90 tracking

9-inch logo: trail name size is 63.0; “National Historic Trail” size is 30 +90 tracking

### Logo Use

The logo is designed to accommodate a variety of sizes and uses. For “desktop” uses, the 1½-inch black and white version can be used for stationery and similar purposes down to a 1-inch size.

For pins, a silhouette design is available.

The 3-inch color version is intended for use on historic trail designation markers (mounted on 4x4 posts), on recreational trail markers, for printed labels, or for appropriate licensed uses.

The 9-inch version is for trail head, staging area, and site identification. It is reproducible in sizes up to 48-inches or more for highway signs.

When the logo is seen against a dark background, the outside border should not be visible. The outside border should be used only against a white or light background. If the markers are mounted with bolts, space is provided in the corners of top and bottom for bolt holes to be made without interfering with logo graphics or lettering.

**Please note:** the colors on the screen or printed from it are not accurate. Use only the PMS colors.

### Official Marker

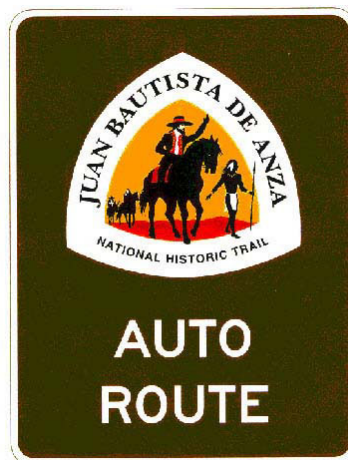


## *Juan Bautista de Anza National Historic Trail*

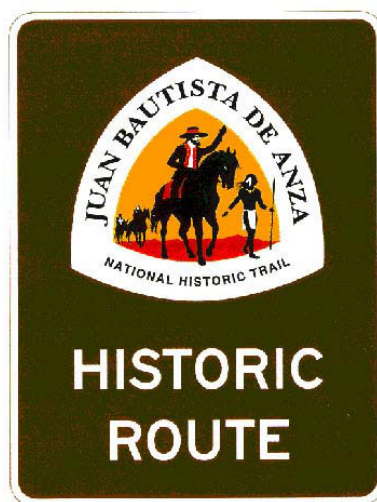
### Black and White Version



**Auto route sign using the official marker where the roadway is on the historic route.**



**Auto Route sign using the official marker where the route deviates from the historic route.**



These signs may be produced in sizes of 24" x 30," 36" x 48," or 48" x 60." Specifications are available. Contact the National Park Service.

### *Proposition 12 and 13 Requirements*

All Projects funded by Proposition 12, the “The Safe Neighborhood Parks, Clean Water, Clean Air, and Coastal Protection Bond Act of 2000” (Parks Bond 2000) and Proposition 13 (2000 Water Bond) must include a posted sign acknowledging the source of the funds following guidelines developed by the State of California Resources Agency.

Installation of signs at all Project sites is required to acknowledge the public’s support of the Parks Bond 2000 and 2000 Water Bond and promote the benefits provided by Bond fund assistance. All signs will contain a universal logo that is equated statewide with the Parks and Water Bond 2000. The logo is on a template, available through the Internet at [www.resources.ca.gov/bond/](http://www.resources.ca.gov/bond/).

Full details and specifications can be found in the grant guidelines or from grant administrators.



#### **SPECIFICATIONS**

Minimum finished size: no smaller than 24" x 24"

Sign substrate: 0.050 aluminum with rounded corners

Background color: white

Print colors: dark blue — to match Pantone 301 CVC

light blue — 20% screen of dark blue

dark green — to match Pantone 341

light green — 50% screen of dark green

Line screen: no coarser than 45 lpi

Traps: 0.10" at 100% size (already built into artwork)