

Antelope Valley Flood Control

Advisory Vote on November 8, 2005





150th and Palmdale Blvd.

JAN 11 2005



52nd W (Between K and L)

DEC 30 2004







Benefits of a Flood Control Agency

- Coordinated regional drainage solutions
- Increased responsiveness to drainage complaints
- Reduce road closures and property damages due to floods
- Address water conservation and storm water quality issues
- Source of funding that would supplement City efforts to address regional drainage issues

Antelope Valley Flood Control

Advisory Vote on November 8, 2005

- Ballot Measures
- Funding
- Jurisdiction Maps
- Implementation
- Questions
- Next Steps

11

Ballot Measures

Two Ballot Measures With Yes/No Questions

Do you support the formation of a new Antelope Valley Flood Control District?

(The current estimated average assessment per lot for a new AVFCD would be approximately \$150-\$200 per lot per year. Formation of a new AVFCD would take approximately 3-4 years.)

Yes

No

Do you support the annexation of the Antelope Valley to the Los Angeles County Flood Control District?

(The current estimated average assessment per lot as part of the Los Angeles County Flood Control District would be approximately \$125-\$175 per lot per year. Annexation would take approximately 2-3 years.)

Yes

No

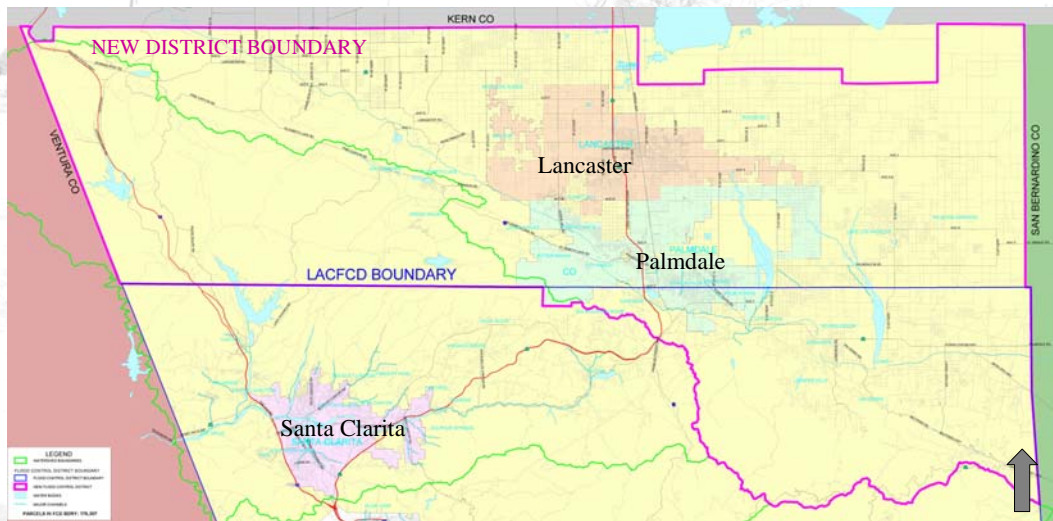
12

Funding

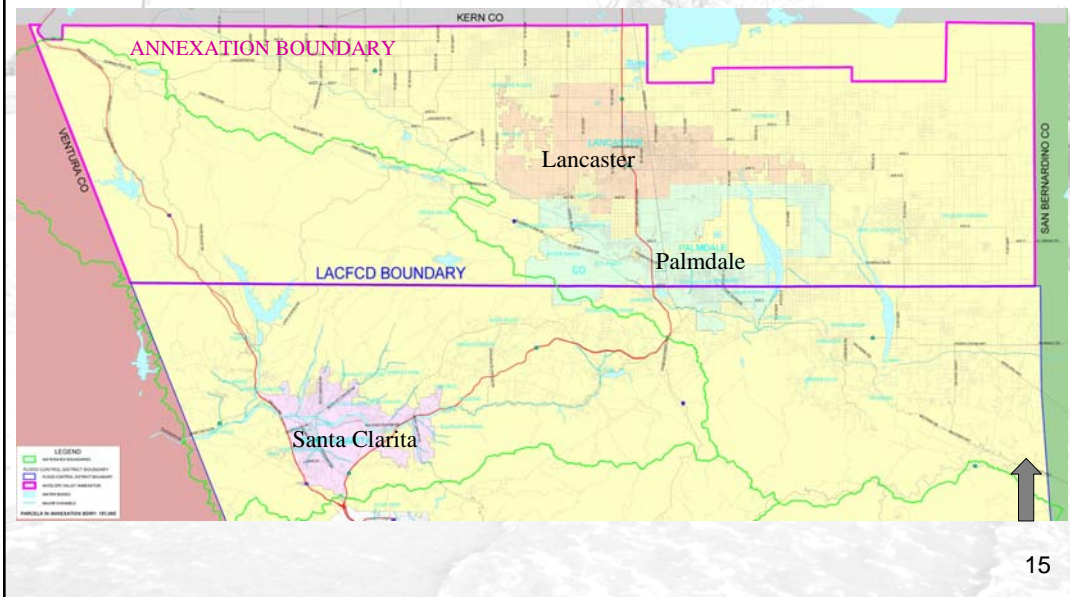
Average Annual Assessment per Lot	Number of Lots	Annual Budget
\$200	175,000	\$35 Million

Over the next 20 years this would mean \$360 million would be available for new construction of flood control, water conservation, and storm water quality infrastructure (Assuming 2.5% inflation, this equates to \$280 million in present value)

New Flood Control District



Annexation to LACFCD



Implementation

<u>Task</u>	<u>Complete By</u>	<u>Responsible Agency</u>
Formation or Annexation Committee	December 2005	LACDPW, SD-5, Cities of Palmdale and Lancaster
Public Outreach	April 2007	LACDPW, SD-5, Cities of Palmdale and Lancaster
Engineering & Assessment Report	December 2007	LACDPW
LAFCO	March 2008	LACDPW
Prop. 218 Vote & State Legislation	November 2008	LACDPW
Establish New District	December 2008	LACDPW