

SANTA ANITA STORMWATER FLOOD MANAGEMENT AND SEISMIC STRENGTHENING PROJECT

Initial Study/Mitigated Negative Declaration

LOS ANGELES COUNTY DEPARTMENT OF PUBLIC WORKS

PUBLIC INFORMATION MEETING

NOVEMBER 5, 2014



Welcome and Introductions

- ◉ **Los Angeles County Flood Control District**
Sterling Klippel, P.E., Sr. Civil Engineer
Matthew Frary, P.E., Civil Engineer
- ◉ **BonTerra Psomas**
Kristin Starbird, Senior Project Manager
- ◉ **Arellano Associates**
Laura Muna-Landa, Senior Associate

Public Information Meeting Agenda

- Purpose of the Meeting and Meeting Format
- Los Angeles County Flood Control District Overview
- Regional Background/Project Overview
- Project Details for Each Component
- California Environmental Quality Act (CEQA) Purpose
- Summary of Mitigated Negative Declaration (MND)
- Project Status and Next Steps
- Questions/Answers

Purpose of the Meeting

- Information Sharing
 - LACFCD is committed to informing the community about important projects
- Facilitate CEQA Public Review
 - Initial Study/Mitigated Negative Declaration (IS/MND) is available for public review through **Thursday, December 4, 2014**
 - Summarize IS/MND conclusions
- Questions/Answers on the Project and IS/MND
 - Speaker forum
 - Topical Station Breakouts - LACFCD and BonTerra Psomas staff

Speaker Card and Comment Card



SPEAKER CARD



(PLEASE PRINT)

Name: _____

Affiliation (if any): _____

Address: _____


City, State, and Zip: _____

Phone Number: _____

E-Mail: _____

Subject of Your Comment: _____

Out of courtesy for others, please limit your comments to no more than three minutes. Your oral comment does not constitute an official comment. To ensure that your comment is considered and is given the opportunity to be heard, please make sure to fill out a comment card.



SANTA ANITA STORMWATER FLOOD MANAGEMENT & SEISMIC STRENGTHENING PROJECT INITIAL STUDY/MITIGATED NEGATIVE DECLARATION NOVEMBER 5, 2014



Name: _____

Address: _____

Phone Number: _____ E-Mail: _____

COMMENTS: _____

Comments on the IS/MND should be sent to LACFGD and be postmarked by **Thursday, December 4, 2014**. Comments can be mailed, emailed to damprompts@dpw.lacounty.gov or faxed to (626) 979-5436. Emailed and faxed comments should include "SASFMSS Project" in the subject line.

Please contact me with future updates about the project.

Speaker Guidelines

- ⦿ After the presentation, members of the public will have an opportunity to speak on topics related to this project.
- ⦿ To speak, you must first fill out a **green** speaker card.
- ⦿ Speakers will be called to the microphone individually to provide their comments.
- ⦿ All will be treated with respect.
- ⦿ Out of courtesy for others, please limit your comments to no more than three (3) minutes. If you have longer comments, you are encouraged to speak one-on-one with project representatives during Station Breakouts.
- ⦿ Your oral comment is not an official comment. All comments must be received in writing (comment card, mail, email, or fax) for project consideration.

Written Comment Guidelines

- ◉ All comments must be received in writing for project consideration.
- ◉ All comments received will become public record.
- ◉ Please limit comments to concerns/questions related to the SASFMSS Project and include “**SASFMSS Project**” in the subject line of your written comment.
- ◉ Comments should focus on the proposed findings and commenters are encouraged to:
 - ◉ Identify the specific effect
 - ◉ Explain why it is believed the effect would occur
 - ◉ Explain why it is believed the effect would be significant
 - ◉ Provide any data or information to support reasonable assumptions
 - ◉ Suggest mitigation measures which would address those significant effects

How to Submit Written Comments

Written comments must be received or postmarked by **December 4, 2014**. Submit comments in any of the following ways:

County of Los Angeles, Department of Public Works
Water Resources Division
Attn: SASFMSS Project
P.O. Box 1460
Alhambra, CA 91802-1460

Email: damprojects@dpw.lacounty.gov

Fax: (626) 979-5436

Los Angeles County Flood Control District

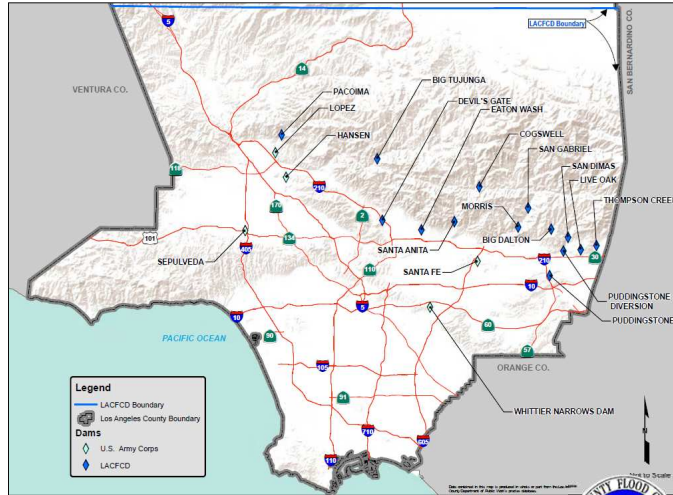
Established by State Legislature in 1915

A component of the LA County Dept. of Public Works

Mission is to control and conserve storm water within the District boundaries

Owens and operates a complex flood protection and water conservation system including:

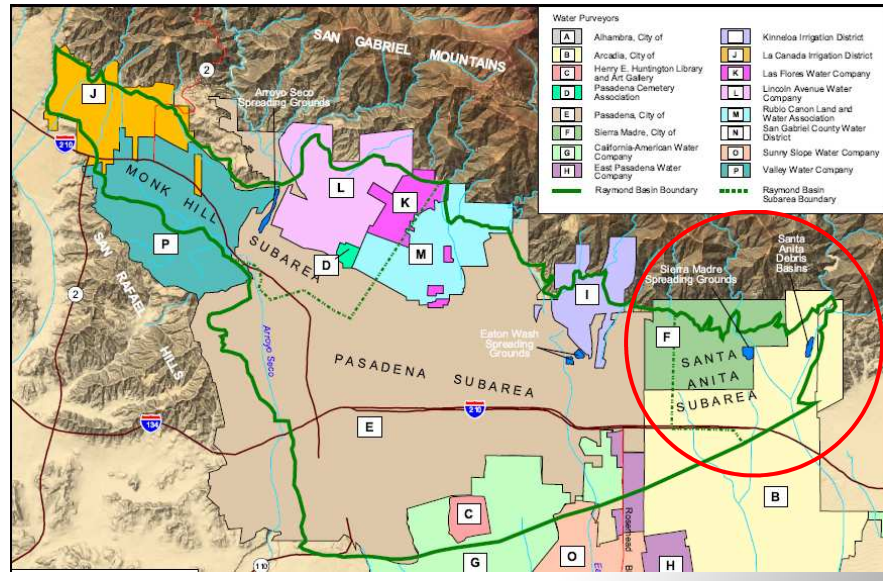
- 14 major dams
- 162 debris basins
- 27 Spreading Ground Facilities
- 500 miles of open channels
- 2,800 miles of underground storm drains
- Approx. 120,000 catch basins



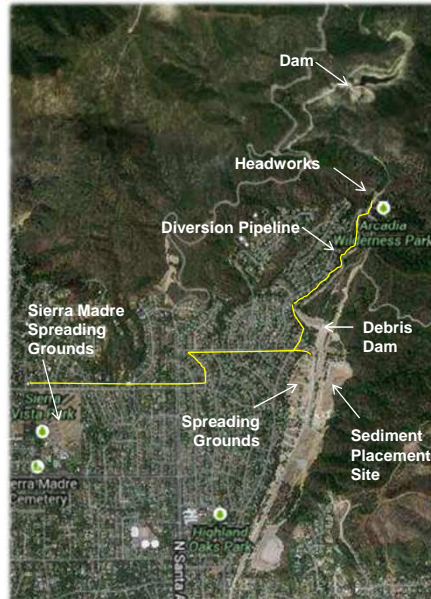
LACFCB encompasses more than 3,000 square miles, 85 cities, and approximately 2.1 million land parcels



Regional Background

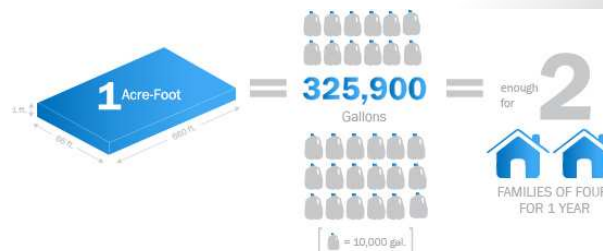
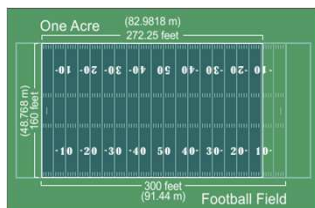


Santa Anita Wash System



Water Conservation in the Santa Anita Wash System

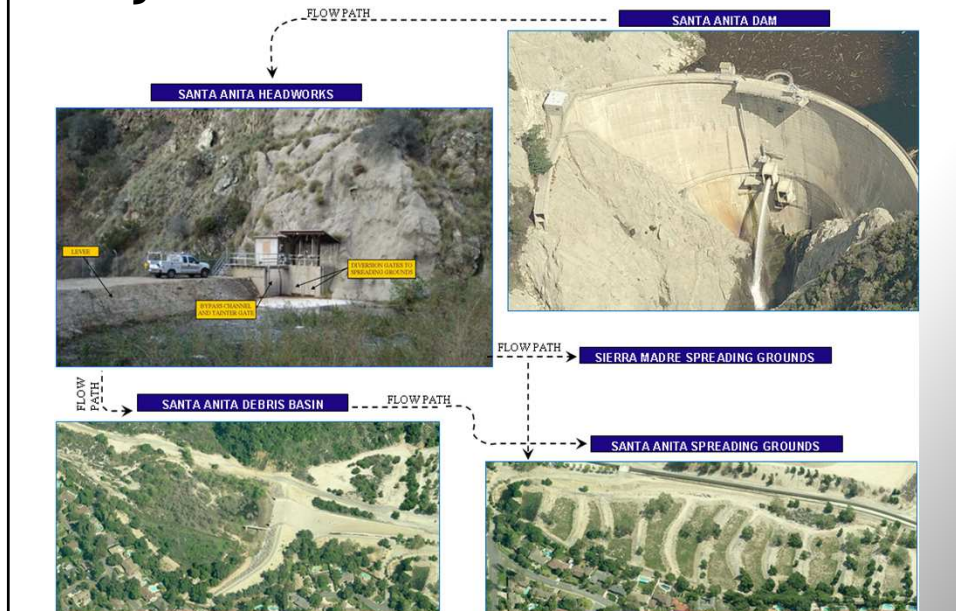
- The Dam, Headworks, Debris Dam, and Spreading Grounds work together to recharge the region's groundwater supply.
- Better control and increased capacity at upstream facilities allow more frequent and reliable filling of the spreading grounds.
- The anticipated net result is an increase in the average recharge to the groundwater basin by over 500 acre-feet per year - the equivalent of enough water to supply over 1000 families of four for one year.



Project Benefits

- Reduce flood risk to downstream communities by:
 - Modifying the Santa Anita Dam spillway to safely pass the Probable Maximum Flood
 - Remediating seismic safety issues at the Santa Anita Debris Dam
- Enhance sustainability of local water supply and increase recharge to the groundwater basin by over 500 acre-feet per year by:
 - Restoring storage capability at Santa Anita Debris Dam
 - Rehabilitating the Santa Anita Headworks for more reliable diversion of stormwater runoff to the spreading grounds
 - Modernizing facilities and implementing new monitoring and control systems
- Improve all-weather access to the Arcadia Wilderness Park by constructing a new culvert crossing

Project Overview



Project Overview

Previous Project Components (year completed):

Spreading Grounds Enlargement and Enhancement Project Phase 1 (2009)
 Dam Seismic Remediation/Outlet Tower Project (2013)

Project Components in the IS/MND:

Dam Spillway Modification and Improvements Project
 Headworks Improvement Project (including new Culvert Crossing)
 Debris Dam Seismic Strengthening and Enlargement Project

Other Current Project Components:

Spreading Grounds Enlargement and Enhancement Project Phase 2

Proposition 1E grant		\$20 M
<small>(Disaster Preparedness and Flood Prevention Bond Act of 2006)</small>		
Local Share		\$20 M
90%	LACFCD	\$18 M
10%	City of Arcadia	\$864,126
	City of Sierra Madre	\$900,938
	Raymond Basin Mgmt Board	\$234,936
Total Project Cost		\$40 M

Project Details - Dam

The Dam does not meet current State Division of Safety of Dams standards for safely passing a probable maximum flood (PMF). Improvements will:

- ⦿ Construct new spillway to safely pass the PMF
- ⦿ Armor downstream canyon walls and toe of Dam
- ⦿ Install new valves, hoist system, and garage with emergency generator
- ⦿ Install new electrical, lighting, and water system
- ⦿ Install new monitoring and control systems
- ⦿ Install helipad for emergency access
- ⦿ Install new security gate



Project Details - Headworks

The headworks levee currently can wash out during larger storms. Improvements will:

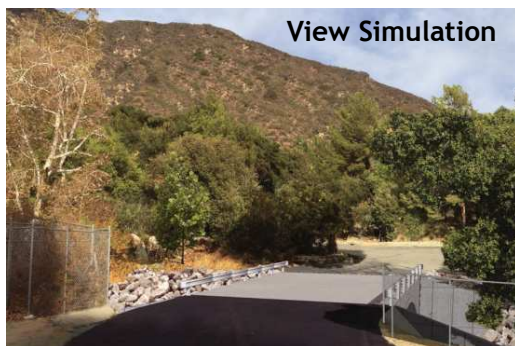
- ⦿ Increase levee height and armor the slopes
- ⦿ Widen the bypass channel
- ⦿ Install a rubber diversion structure
- ⦿ Install electric motor operated gates and control systems



Project Details - Culvert Crossing



An existing corrugated metal pipe culvert crossing allows access to the Arcadia Wilderness Park. Overtopping occurs approximately once every 2-3 years.



View Simulation

Proposed pre-cast concrete culvert crossing will be an open span

- ⦿ Open span will allow for higher storm flows
- ⦿ Widening will allow for emergency vehicles to safely access the Park

Project Details - Debris Dam

The Debris Dam does not meet current State Division of Safety of Dams standards for seismic safety. Improvements will:

- Replace existing outlet tower, install new gates, and rehabilitate outlet pipe
- Install supplemental inclined outlet tower
- Buttress spillway walls
- Buttress westerly embankment both upstream and downstream
- Install new control system



CEQA and Project Schedule

- IS/MND Public Review (45-Days)
 - October 20th through December 4th
 - Public Meeting: November 5th
- Final IS/MND- March 2015
- Construction Schedule Begins:
 - Dam (Late 2015; duration = 10 months)
 - Headworks and Culvert Crossing (Spring 2016; duration = 6 months)
 - Debris Dam (Summer 2016; duration = 6 months)

CEQA Purpose and Summary of the IS/MND

California Environmental Quality Act

- ◉ Inform decision-makers and public about potentially significant environmental effects;
- ◉ Identify ways to avoid or significantly reduce environmental impacts;
- ◉ Prevent significant avoidable impacts through feasible alternatives and/or mitigation; and
- ◉ If a project is approved with significant impacts, disclose to the public the reasons why.

Roles and Responsibilities

- Lead Agency (LACFCD):
 - Independently review and analyze all reports
 - Circulate a CEQA document that reflects its independent judgment
 - Consider approval of the Project and the IS/MND

- Environmental Consultant (BonTerra Psomas):
 - Hired by the LACFCD to provide objective expert analysis
 - Works on behalf of the LACFCD staff to prepare the IS/MND
 - Does not advocate for any particular position

Environmental Topics Reviewed

- | | |
|-----------------------------------|------------------------------|
| •Aesthetics | •Land Use & Planning |
| •Agriculture & Forestry Resources | •Mineral Resources |
| •Air Quality | •Noise |
| •Biological Resources | •Population & Housing |
| •Cultural Resources | •Public Services |
| •Geology & Soils | •Recreation |
| •Greenhouse Gas Emissions | •Transportation & Traffic |
| •Hazards & Hazardous Materials | •Utilities & Service Systems |
| •Hydrology & Water Quality | |

Project-Related Actions

- **Project Design Features (PDF)**
 - Voluntarily incorporated as part of the “Project Description” to enhance the project and may also avoid or reduce environmental impacts
- **Regulatory Requirements (RR)**
 - Required to comply with regulations and laws, and not specifically related to CEQA
- **Mitigation Measures (MM)**
 - After consideration of PDFs and RRs, additional measures required to reduce impacts to “less than significant” levels

Project Design Features (PDF)

AES-1: Re-armor walls at toe of Dam with matching color

BIO-1: Biological Monitor present during vegetation clearance and performs Contractor training for biological resources

GEO-1: Comply with Standard Specifications For Public Works Construction (Greenbook), Construction Specifications Institute, and DSOD guidelines for seismic stability

GEO-2: Conduct Debris Dam geotechnical investigation

TRA-1: Heavy diesel trucks avoid Highland Oaks Elementary crosswalks during drop-off/pick-up hours

Regulatory Requirements (RR)

- AQ-1: SCAQMD Rule 403 (Fugitive Dust Reduction)
- AQ-2: SCAQMD Rule 402 (Nuisance)
- CUL-1: Archaeological evaluation if resources found
- CUL-2: Contact coroner if human remains are found
- HAZ-1: CCR Title 22 (Hazardous Material Use, Disposal, Storage)
- HYD-1: NPDES Permit (Storm Water Quality-SWPPP)
- HYD-2: Clean Water Act (WDRs to Protect Beneficial Uses)
- USE-1: Special Use Permit application to USFS for Dam
- NOI-1: Comply with County/Arcadia Noise Ordinance
- TRA-1: Comply with Title 16 (Highway), Caltrans permit
- TRA-2: Comply with Greenbook- Traffic Control
- TRA-3: Helipad compliance with FAA, Caltrans, ALUC
- UTL-1: C&D Recycling and Reuse Plan

Mitigation Measures (MM)

- AES-1: Replace sycamore trees within 100-feet of original location
- BIO-1: Tree Protection, Monitoring, and Replacement
- BIO-2: Pre-dewatering relocation of special status turtles/snakes
- BIO-3: Migratory Bird Treaty Act nest protection
- BIO-4: Exclusionary measures for bat roosting
- BIO-5: Regulatory Permits (USACE, RWQCB, CDFW)
- HAZ-1: Health and Safety Plan (emergency response protocols)
- HAZ-2: Fire Protection Plan (fire avoidance and evacuation)
- NOI-1: BMPs- distance from sensitive receptors
- NOI-2: Notification of schedule and complaints manager
- NOI-3: Noise Barrier at Debris Dam
- NOI-4: Restrict large equipment near occupied residence

Project Status and Next Steps

1. Written comments must be received or postmarked by **December 4, 2014**.

County of Los Angeles, Department of Public Works
Water Resources Division
Attn: SASFMSS Project
P.O. Box 1460
Alhambra, CA 91802-1460
Email: damprojects@dpw.lacounty.gov
Fax: (626) 979-5436

2. The Initial Study/MND is available for viewing at:

- www.dpw.lacounty.gov/wrd/Projects/SantaAnita/
- Department of Public Works, Water Resources Division
- Arcadia Public Library
- Sierra Madre Public Library
- Monrovia Public Library

3. See sign-in sheet to be notified of Project updates.

Question/Answer and Discussion at Topical Stations




THANK YOU FOR ATTENDING

Speaker Guidelines

- After the presentation, members of the public will have an opportunity to speak on topics related to this project.
- To speak, you must first fill out a **green** speaker card.
- Speakers will be called to the microphone individually to provide their comments.
- All will be treated with respect.
- Out of courtesy for others, please limit your comments to no more than three (3) minutes. If you have longer comments, you are encouraged to speak one-on-one with project representatives during Station Breakouts.
- Your oral comment is not an official comment. All comments must be received in writing (comment card, mail, email, or fax) for project consideration.

Speaker Card and Comment Card



SPEAKER CARD

(PLEASE PRINT)

Name: _____

Affiliation (if any): _____

Address: _____


City, State, and Zip: _____


Phone Number: _____

E-Mail: _____

Subject of Your Comment: _____

Out of courtesy for others, please limit your comments to no more than three minutes. Comments do not constitute an official comment. To ensure that your comment is considered and is given due weight, please make sure to fill out a comment card.





SANTA ANITA STORMWATER FLOOD MANAGEMENT & SEISMIC STRENGTHENING PROJECT

INITIAL STUDY/MITIGATED NEGATIVE DECLARATION

NOVEMBER 5, 2014

Name: _____

Address: _____

Phone Number: _____ E-Mail: _____

COMMENTS: _____

Comments on the IS/MND should be sent to LACFGD and be postmarked by **Thursday, December 4, 2014**. Comments can be mailed, emailed to damprompts@dpw.lacounty.gov or faxed to (626) 979-5436. Emailed and faxed comments should include "SASFMSS Project" in the subject line.

Please contact me with future updates about the project.

