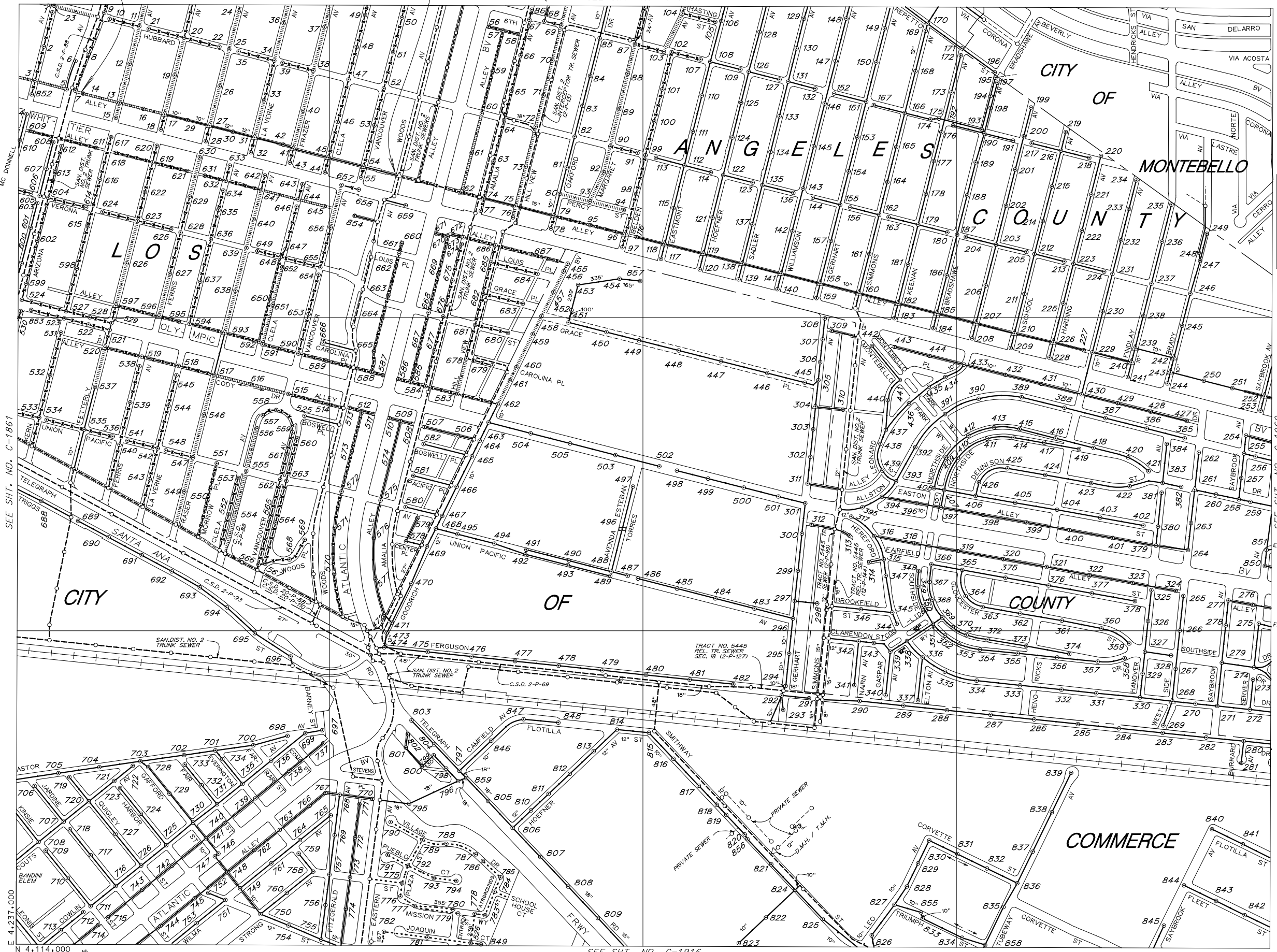


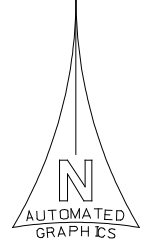
C-184  
C-185  
C-186  
C-187

NOTE: BEFORE CLEANING THE LINE IN THE ALLEY N/O WHITTIER BLVD. BETWEEN ARIZONA AVE. AND WOODS AVE., (MI 14 TO TRUNK) NOTIFY THE STORES TO CLOSE THEIR SEWER VALVES AT 4701, 4709-11, 4713-15, 4771 AND 4801 WHITTIER BLVD.

SEE SHT. NO. C-1914



THIS MAP IS INTENDED FOR USE ONLY AS OPERATIONS MAP BY LOS ANGELES COUNTY SEWER MAINTENANCE DISTRICTS. LOS ANGELES COUNTY EXPRESSLY DISCLAIMS ANY LIABILITY FOR ANY INACCURACIES WHICH MAY BE PRESENT IN THIS MAP.



LEGEND

- CLAY SEWERS MAINTAINED BY S.M.D., 8" UNLESS OTHERWISE NOTED
- PLASTIC SEWERS
- CONCRETE SEWERS
- CLAY SEWERS, LINED
- CEMENT SEWERS, LINED
- FORCE MAINS
- - - SEWERS NOT MAINTAINED BY S.M.D.
- - - TRUNK SEWERS
- - - CITY BOUNDARY
- STANDARD MANHOLE
- △ DROP MANHOLE
- SHALLOW MANHOLE
- ◇ TRAP MANHOLE
- ⊕ WEIR MANHOLE
- C.O. ● CLEANOUT
- L.H. ● LAMP HOLE
- PUMP STATION

TOTAL MH'S THIS MAP: 859

MAP REV 08-05-03  
DATA BASE REV 09-15-98

SEE SHT. NO. C-1916