

**COUNTY OF LOS ANGELES**  
**ROAD DEPARTMENT**

**PRECISE**  
**BENCH MARK LIST**



**BELLFLOWER QUAD**

**1970 ADJUSTMENT**

## PREFACE

The Road Department level net is composed of more than 1,000 miles of levels supporting in excess of 10,000 bench marks. In 1964-65, a major readjustment of the net was undertaken. To emphasize the complete break with previous elevations, the SY, SG & SL series bench marks have been re-labeled BY, BG & BL, respectively.

To facilitate the adjustment, indexing, and distribution of adjusted values of the net, the County territory was divided into 31 quads or areas. For identification purposes each quad was given a name, viz., "Rosemead," "La Mirada," "Santa Fe," etc. When bench marks and elevations in the Road Department net are used, the name of the quad in which the bench mark is located and the date of the adjustment of the elevation must be included in the bench mark description, e.g.,

BG 1887 ---L+BN IN CONC HDWL OF DRAIN PIPE UNDER DR 218 FT  
NE +18 FT SE C/L INT GRAND AVE +CAMERON AVE MKD (BM)  
(COVINA ---1965) ELEV. 696.238

It is expected that this general adjustment will, for the most part, remain sound for the next 8 to 12 years. As new circuits are completed, however, re-adjustment of individual quads may become advisable. It is expected that these subsequent adjustments will be in the nature of a few hundredths of a foot. When a quad is re-adjusted, new elevation lists will be published and the date of the re-adjustment will replace the "1965" at the end of the bench-mark description. Two bench marks in the same quad with different adjustment dates will not normally join each other. Since all adjustments taper out to nothing at the periphery of the quad, any bench mark in one quad will join any bench mark in another quad regardless of their respective adjustment dates.

The basic accuracy of the net is reflected by an indicated field probable error of plus or minus 0.012 foot per mile of leveling as determined from 298 conditions of closure. However, many years experience in vertical control in the greater Los Angeles basin and Antelope Valley indicate that because of varying degrees of subsidence and heaving, the true datum is recovered only by obtaining substantial agreement of a number of bench marks.

The users of this net are invited to assist in its maintenance by notifying this Department of cases of obliteration, apparent mistakes in descriptions or elevations, and proven disturbance of bench marks.

---

DATUM: U. S. Coast and Geodetic Survey Sea Level Datum  
of 1929, through the medium of the Los Angeles  
County Engineer Precise Level Net, 1963 Adjust-  
ment.

ABBREVIATIONS USED IN BENCH MARK LISTINGS

ABUT - - - - -	Abutment	EC - - - - -	End of Curve
ALG - - - - -	Along	ENT - - - - -	Entrance
ANG PT - - - - -	Angle Point	FL - - - - -	Floor
B/W - - - - -	Back of Walk	FTG - - - - -	Footing
BCR - - - - -	Beginning of Curb Return	F/W - - - - -	Front of Walk
BC - - - - -	Beginning of Curve	GAR - - - - -	Garage
BLDG - - - - -	Building	HDWL - - - - -	Headwall
BM - - - - -	Bench Mark	HSE - - - - -	House
BT SPK - - - - -	Boat or Bolt Spike	INT - - - - -	Intersection
BR CAP - - - - -	Brass or Bronze Cap	IP - - - - -	Iron Pipe
C B - - - - -	Catch Basin	LT - - - - -	Left
CTR - - - - -	Center	LACE - - - - -	L. A. City Engineer
C/L - - - - -	Center Line	LACS - - - - -	L. A. County Engineer
C/L INT - - - - -	Center Line Intersection	LAFC - - - - -	L. A. Co. Flood Control
C/L PROD - - - - -	Center Line Produced	L+BN - - - - -	Lead and Bench Nail
CONC - - - - -	Concrete	L+BR - - - - -	Lead and Brad
COR - - - - -	Corner	L+N - - - - -	Lead and Nail
COE - - - - -	Corps of Engineers	L+RDBM TAG - - - - -	Lead and Road Dept. Bench Mark Tag
CULV - - - - -	Culvert	L+SPK - - - - -	Lead and Spike
CB - - - - -	Curb	L+T - - - - -	Lead and Tack
CS MON - - - - -	County Engineer Monument	MCR - - - - -	Middle of Curb Return
CS BR CAP - - - - -	County Engineer Brass Cap	MKD - - - - -	Marked
CT SPK - - - - -	Cut Spike	MC - - - - -	Middle of Curve
DR - - - - -	Drive or Driveway	MON - - - - -	Monument
E/O - - - - -	East of	N/O - - - - -	North of
ECR - - - - -	End of Curb Return	NR - - - - -	Near

ABBREVIATIONS USED IN BENCH MARK LISTINGS . . . CONTINUED

OPP - - - - - Opposite  
PI - - - - - Point of Intersection  
PK+W - - - - - PK Nail and Washer  
P/L - - - - - Property Line  
POST - - - - - Point on Semi-Tangent  
PP - - - - - Power Pole  
PVMT - - - - - Pavement  
PROD - - - - - Produced  
RD - - - - - Road  
RDEM - - - - - Road Dept. Bench Mark  
RR - - - - - Railroad  
RT - - - - - Right  
R/W - - - - - Right of Way  
SDMH - - - - - Storm Drain Manhole  
SMH - - - - - Sewer Manhole  
SPK - - - - - Spike  
ST+W - - - - - Spike Tin and Washer  
S/O - - - - - South of  
TP - - - - - Telephone Pole  
USC+GS - - - - - U. S. Coast and Geodetic Survey  
USGS - - - - - U. S. Geological Survey  
WK - - - - - Walk  
W/O - - - - - West of

**QUAD**

**NORWALK**

**QUAD**

**ARTESIA**

1520  
7772 7773  
7770 7771  
1515  
798  
3628  
799  
808 1916  
807  
77  
3630  
74  
73  
72  
71  
2342  
70  
2343

1925  
801  
803  
804  
806  
8783  
8784  
3631  
1077  
806

8773  
8774  
3634  
4567  
7090  
7091  
7092  
7093  
4565  
8801  
7108  
8802

4962  
4963  
8775  
8776  
5057  
8803  
5055  
5054  
5053  
5052  
5006  
7075  
5004  
5002  
5001  
5000

5008  
5009  
5011  
5010  
5012  
8591  
8592  
7066  
8594  
8595  
7064  
7063  
7062  
7061  
8596  
8597

8598  
7059  
8599  
8600  
2946  
2943  
2942  
2940  
6156  
6157  
6158  
6159  
2930  
2931

**ALONDRA**

**ARTESIA AVE**

**SOUTH ST**

**LAKEWOOD**

**QUAD**

**CARSON**

**STREET**

**SPRING**

**STREET**

**BLVD**

**BLVD**

**LAKEWOOD BLVD**

**PARAMOUNT**

**CHERRY AVE**

**CHARLEMAGNE AVE**

**BELFLOWER BLVD**

**ASHWORTH AVE**

**FLORA VISTA AVE**

**ARTESIA AVE**

**ALLINGTON ST**

**SOUTH ST**

**VERDE AVE**

**PALO VERDE AVE**

**ROAD**

**STUDEBAKER**

**QUAD**

**ARTESIA**

8808  
3372  
3373  
7079  
7080  
7081  
7082  
8809  
3378  
3379  
8810  
3681  
3686  
3688  
3687  
7085  
1188

2706  
8806  
7087  
2678  
5029  
2679  
5031  
5030  
5026  
7058  
5027

7057  
7056  
7055  
8814

7060  
6155  
8598  
7059  
8599  
8600  
2946  
2943  
2942  
2940  
6156  
6157  
6158  
6159  
2930  
2931

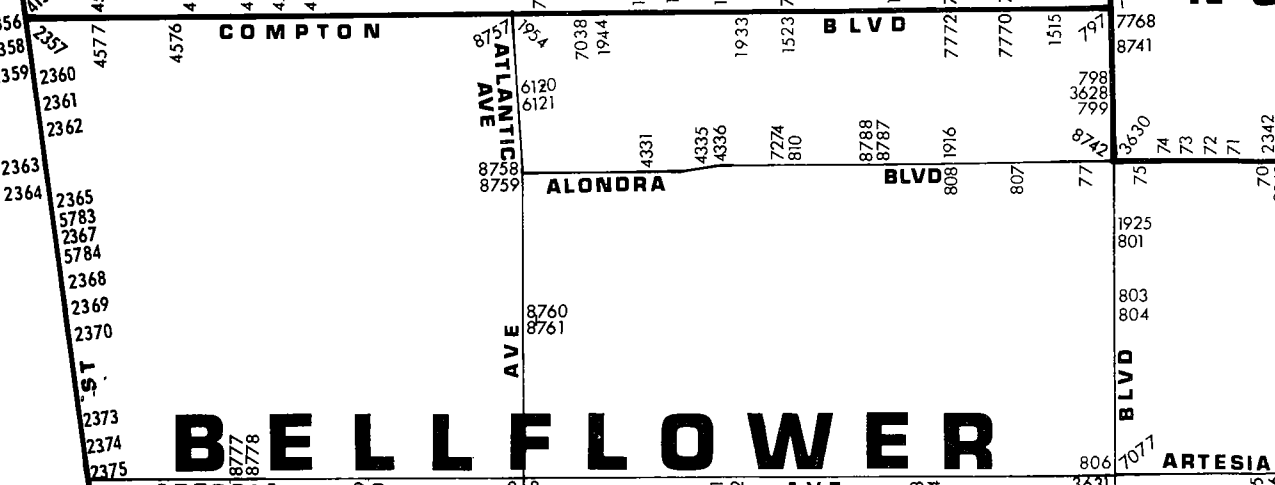
**QUAD**

# SOUTH GATE QUAD

N O

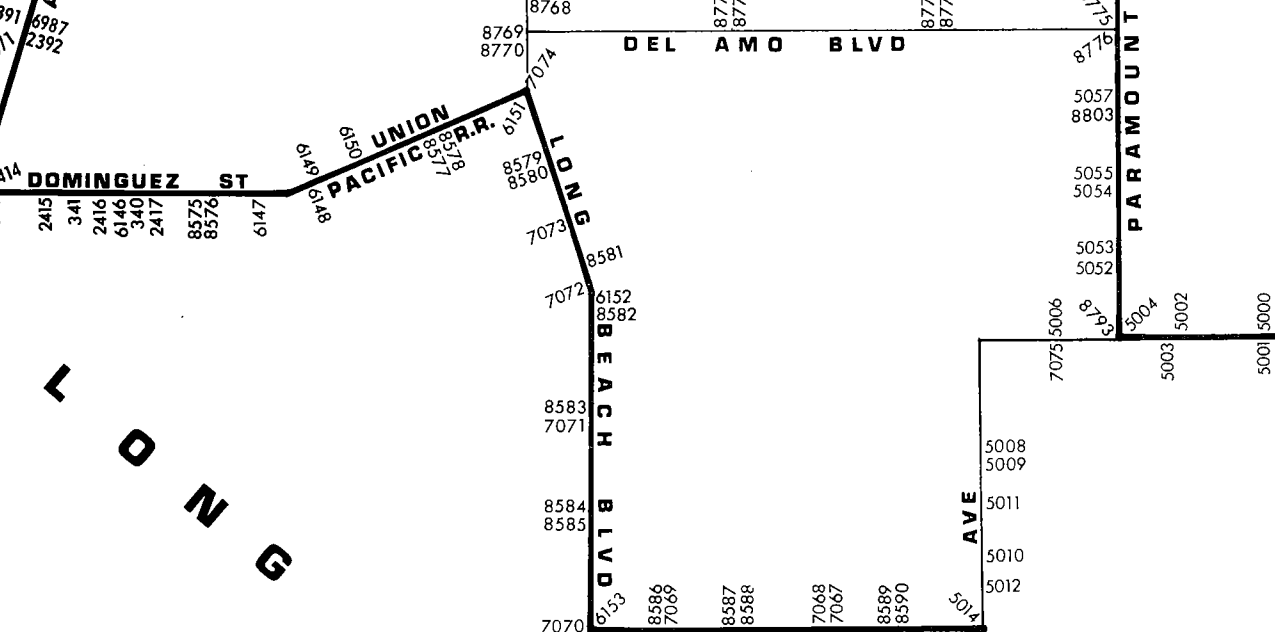
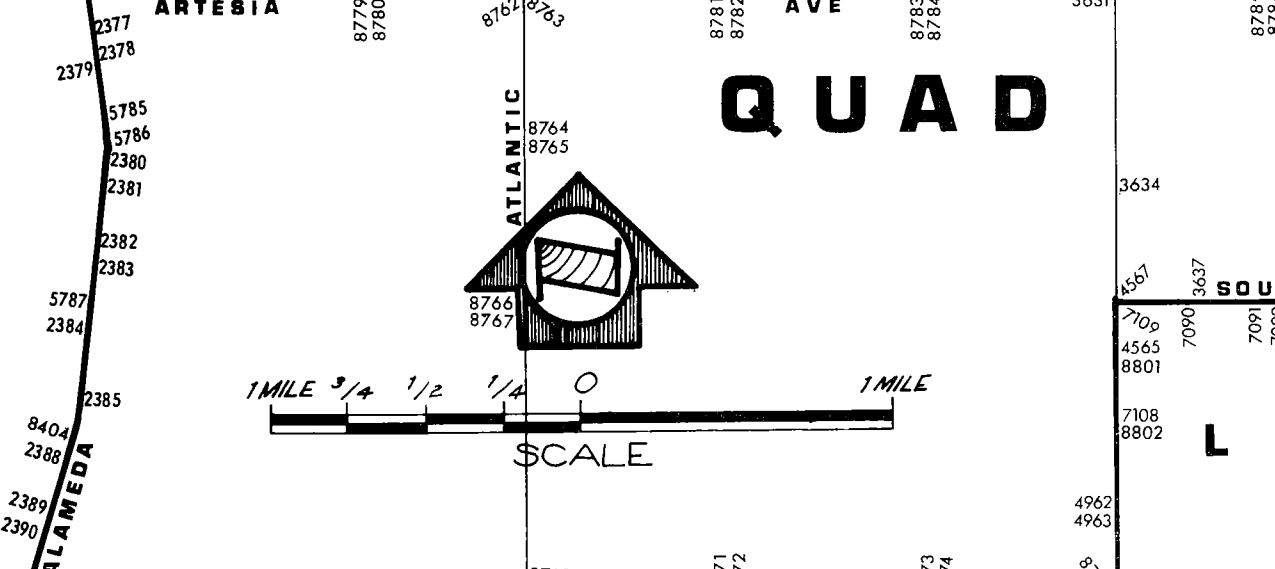
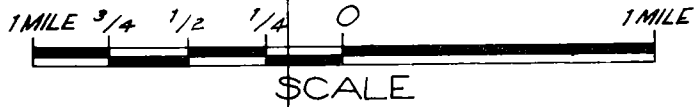
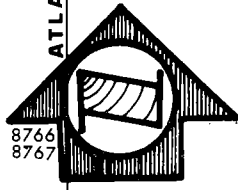
G A R D E N A  
Q U A D

G A R D E N A  
Q U A D



# BELLFLOWER

# QUAD



L O N G  
B E A C H  
Q U A D

B E A C H  
Q U A D

QUAD-YEAR	ELEV	DESCRIPTION (INCLUDE QUAD AND YEAR IN DESCRIPTION)	BM NUMBER
BASELINE (1965)	66.342	L+T C/L PVMT ALONDRA BLVD 100FT± W C/L DOWNEY AVE	BY 70A
BASELINE (1965)	66.947	L+T C/L INT INDIANA AVE + ALONDRA BLVD	BY 71A
BASELINE (1965)	67.566	CUT SPK 6FT± N C/L INT VIRGINIA AVE + ALONDRA BLVD	BY 72
BASELINE (1965)	68.169	BT SPK PVMT 7FT± N C/L INT GEORGIA AVE + ALONDRA BLVD	BY 73
BASELINE (1965)	68.691	SPK PVMT 7FT± N C/L INT ORIZABA AVE + ALONDRA BLVD	BY 74
BASELINE (1965)	68.426	SPK PVMT 8FT± N C/L INT CALIFORNIA AVE + ALONDRA BLVD	BY 75
BELLFLWR (1970)	68.218	L+T PVMT 14FT± S + 19FT± W C/L INT COLGADO AVE + ALONDRA BLVD	BY 77
BELLFLWR (1970)	64.903	L + BR NR CTR CB RET @ SW COR BELLFLOWER BLVD + ARTESIA BLVD 46FT W + 53FT S C/L INT	BY 120
BELLFLWR (1970)	63.633	FCBM 2FT N BCR @ NE COR BELLFLOWER BLVD + RAMONA ST 42FT N + 42FT E C/L INT MKD 74-190	BY 121
BELLFLWR (1970)	61.909	L+BN 1FT±N CB RET @ NW COR CEDAR AVE + BELLFLOWER BLVD 36FT N + 42FT W C/L INT	BY 122
BELLFLWR (1970)	60.327	L+SPK 5FT±N CB RET @ NW COR ROSE AVE + BELLFLOWER BLVD 40FT N + 42FT W C/L INT	BY 123
BASELINE (1965)	59.183	L+T 1FT± W CB RET @ NW COR ASHWORTH ST + BELLFLOWER BLVD 16FT N + 64FT W C/L INT	BY 124
BASELINE (1965)	53.439	L+T W CB 1FT± N CB RET @ NW COR OLIVA AVE + SOUTH ST 110FT N + 20FT W C/L INT	BY 164
BASELINE (1965)	53.048	L+T N CB SERVICE RD 2FT± W CB RET @ NW COR CASTANA AVE + SOUTH ST 89FT N + 57FT W C/L INT	BY 165
BASELINE (1965)	52.716	L+T N CB SERVICE RD 1FT± W CB RET @ NW COR HAYTER AVE + SOUTH ST 89FT N + 56FT W C/L INT	BY 166A
BASELINE (1965)	32.793	L+T CTR CB RET @ SW COR SANTA FE AVE + DOMINGUEZ ST	BY 340
BASELINE (1965)	31.411	L+SPK 5FT± S CB RET @ SE COR PROSPECT AVE + DOMINGUEZ ST	BY 341A
BASELINE (1965)	31.479	L + T IN S CB 30FT W C/L ALLEY 20FT S + 96FT E C/L INT ALAMEDA ST + DOMINGUEZ ST E BBL	BY 343
BASELINE (1965)	37.301	L+T NW COR SP SIGNAL SWITCH BOX NO 4972 35FT± S C/L DEL AMO BLVD + 25FT± E C/L MAIN LINE SPRR	BY 371
BASELINE (1965)	73.221	CS REF MON IN WELL 14IN DN ON NE COR ALONDRA BLVD + WOODRUFF BLVD 56FT± N + 60FT± E C/L INT MKD (CLEARWATER K 2A)	BY 473
BASELINE (1965)	73.831	CSBM MON FLUSH ON NE COR ALONDRA BLVD + WOODRUFF AVE 39FT± N + 180FT± W C/L INT MKD (BM 6-6A1958)	BY 474A
BASELINE (1965)	74.809	L + N 13FT E C/L EUCALYPTUS AVE + 80FT S C/L ALONDRA BL	BY 477
BASELINE (1965)	75.268	L + T 15FT E C/L LEAHY AVE + 80FT N C/L ALONDRA BL	BY 478

QUAD-YEAR	ELEV	DESCRIPTION (INCLUDE QUAD AND YEAR IN DESCRIPTION)	BM NUMBER
BASELINE (1965)	75.247	L + T 15FT W C/L LEAHY AVE + 80FT N C/L ALONDRA BL	BY 479
BASELINE (1965)	71.855	L+T 2FT# W CB RET NW COR RYON AVE + ALONDRA BLVD 38FT N + 32FT W C/L INT	BY 763
BASELINE (1965)	73.742	L+BN S CB ALONDRA BLVD 6IN E CB RET @ SE COR ALONDRA BLVD + PACIFIC AVE 70FT# W PERR	BY 765A
BASELINE (1965)	68.648	L + SPK 4FT# E CB RET @ NE COR CLARK AVE + ALONDRA BLVD	BY 766
BASELINE (1965)	69.642	L+T C/L INT VIRGINIA DR + ALONDRA BLVD	BY 767
BASELINE (1965)	68.433	L+T C/L INT PITTS AVE + ALONDRA BLVD	BY 769
BASELINE (1965)	67.561	L+T C/L HAYTER AVE 8FT# S C/L ALONDRA BLVD	BY 770
BASELINE (1965)	72.660	BT SPK 1FT S BCR @ SE COR PARAMOUNT BLVD + 1ST ST 31FT S + 38FT E C/L INT	BY 796
BASELINE (1965)	72.360	CS MON 17FT# W INT PARAMOUNT BLVD + COMPTON BLVD	BY 797
BASELINE (1965)	72.397	L+T CTR CB RET SE COR PARAMOUNT BLVD + MADISON ST 30FT S + 40FT E C/L INT	BY 798
BASELINE (1965)	68.622	L+T W CB PARAMOUNT BLVD 2FT# N CB RET @ NW COR MADISON ST + PARAMOUNT BLVD	BY 799
BELLFLWR (1970)	66.034	SPK NR C/L PARAMOUNT BLVD 28FT# N C/L JACKSON ST	BY 801
BELLFLWR (1970)	65.662	L+T E CB 5FT# N BCR @ NE COR PARAMOUNT BLVD + 70TH ST 57FT# N + 33FT# E C/L INT	BY 803
BELLFLWR (1970)	65.333	CITY OF LONG BEACH MON IN WELL 6IN DN @ DR NR C/L INT PARAMOUNT BLVD + 70TH ST	BY 804
BELLFLWR (1970)	60.876	L+T CTR CB RET 6IN# E L+BRAD @ NW COR ARTESIA ST + PARAMOUNT BLVD	BY 806
BELLFLWR (1970)	66.949	CT SPK CONC PVMT 17FT# S C/L ALONDRA BLVD 35FT# W C/L ILLINOIS ST	BY 807
BELLFLWR (1970)	66.332	CT SPK CONC PVMT @ C/L INT ALONDRA BLVD GARFIELD AVE	BY 808
BELLFLWR (1970)	65.304	L+BN IN CHIS SQ W CB 25FT# N BCR @ NW COR ORANGE AVE + ALONDRA BLVD 100FT# N + 30FT# W C/L INT MKD (BM)	BY 810
BASELINE (1965)	73.581	L + TINS CB ALONDRA BL 1FT E INTO RET 68FT W C/L WOODRUFF AVE	BY 960
BASELINE (1965)	58.587	L+T CTR CB RET SW COR ASHWORTH ST + CLARK AVE	BY 1438
BELLFLWR (1970)	65.327	L+BR @ NW COR ARTESIA AVE + BELLFLOWER BLVD 5FT# W CTR CB RET 43FT N + 43FT W C/L INT	BY 1499
BASELINE (1965)	72.721	L+BN E END GAS ISLAND 75FT# W + 52FT# W C/L INT COMPTON BLVD + VERMONT AVE	BY 1515
BASELINE (1965)	69.886	L+T W CONC STRIP 53FT# N C/L COMPTON BLVD HSE 7243	BY 1520



QUAD-YEAR	ELEV	DESCRIPTION (INCLUDE QUAD AND YEAR IN DESCRIPTION)	BM NUMBER
BASELINE (1965)	69.669	L+T E EDGE CONC WK 65FT± E + 40FT± S <del>C/L INT</del> <b>OUT</b> COMPTON BLVD + ORANGE AVE SE COR	BY 1523
BELLFLWR (1970)	66.477	RDBM TAG N CB 1FT± W BCR @ NW COR ALONDRA BLVD + GARFIELD AVE 40FT± N + 78FT± W C/L INT	BY 1916
BELLFLWR (1970)	65.811	L+T MCR NE COR PARAMOUNT BLVD + JACKSON ST 32FT N + 37FT E C/L INT	BY 1925
BASELINE (1965)	68.536	L+T E CB 15FT± S CB RET @ SE COR FAULKNER AVE + COMPTON BLVD	BY 1933
BASELINE (1965)	67.014	CS MON C/L SAN JOSE AVE + APPROX N P/L OF 1ST ALLEY S COMPTON 130FT± S C/L INT SAN JOSE AVE + COMPTON BLVD	BY 1937
BASELINE (1965)	67.110	LAFC MON @ C/L INT COMPTON BLVD + SAN ANTONIO AVE MKD L A CO FLOOD CONT	BY 1940A
BASELINE (1965)	88.069	RDBM TAG IN EAST ABUT. @ NE COR OF COMPTON BLVD BRIDGE OVER LA RIVER 0.4FT± N OF CB FACE	BY 1941
BASELINE (1965)	77.715	RDBM TAG IN SOUTH CB COMPTON BLVD 65FT± W OF BRIDGE NO 53-823 OVER THE (LONG BEACH FREEWAY) 250FT± E OF GIBSON AVE	BY 1944A
BASELINE (1965)	66.364	L + T CTR CB RET @ SE COR COMPTON BLVD + ATLANTIC BLVD 40 FT S + 40FT E C/L INT	BY 1954
BASELINE (1965)	68.780	L+T 1FT± S CB RET @ SW COR CENTER ST + LAKEWOOD BLVD 38FT S + 46FT W C/L INT	BY 2093
BASELINE (1965)	70.807	L+BN N CB PACIFIC AVE 65FT± E CB RET @ NE COR PACIFIC AVE + ALONDRA BLVD	BY 2113
BASELINE (1965)	66.454	L+BN N CB ALONDRA BLVD 1FT W CB RET @ NW COR ALONDRA BLVD + DOWNEY AVE 35FT N + 54FT W C/L INT	BY 2342
BASELINE (1965)	66.530	L+T CTR CB RET @ SE COR ALONDRA BLVD + DOWNEY AVE	BY 2343
BASELINE (1965)	68.501	L + BN 28FT N C/L COMPTON BLVD + 60FT W C/L ALAMEDA ST E BBL 13FT E/O E RAIL SPRR	BY 2356
BASELINE (1965)	68.698	L + BN 28FT S C/L COMPTON BLVD + 70FT W C/L ALAMEDA ST E BBL 5FT E/O E RAIL SPRR	BY 2357
BASELINE (1965)	65.320	L+T 25FT± W C/L ALAMEDA ST E BARREL ON C/L PROD LAUREL ST TO THE E	BY 2358
BASELINE (1965)	65.707	L+T W CB @ BCR @ NW COR ALAMEDA ST E BARREL + LAUREL ST TO THE W 25FT± W + 32FT± N C/L INT	BY 2359
BASELINE (1965)	63.962	STEEL SPK WITH (X) ON TOP CTR S BCR TO DRWY OF COMPTON STREET DEPT NO 458 S ALAMEDA ST 29FT± E C/L E BARREL 180FT± N MYRRH ST	BY 2360
BASELINE (1965)	65.005	CS MON IN WELL 10IN DN 50FT± E C/L SPRR 27FT± W C/L ALAMEDA ST E BARREL + 18FT± S C/L PROD MYRRH ST TO THE E MKD (BM 5-22A)	BY 2361A
BASELINE (1965)	64.527	L+BN W CB ALAMEDA ST E BARREL 12FT± E OF 5TH TELEGRAPH POLE N OF OLIVE ST 530FT± S OF MYRRH ST 25FT± W C/L	BY 2362
BASELINE (1965)	65.637	L + T IN CB 30FT N C/L ALONDRA BLVD + <del>C/L</del> <b>OUT</b> C/L ALAMEDA ST E BARREL	BY 2363

QUAD-YEAR	ELEV	DESCRIPTION (INCLUDE QUAD AND YEAR IN DESCRIPTION)	BM NUMBER
BASELINE (1965)	64.762	L + T CTR CB RET SE COR ALONDRA BLVD + ALAMEDA ST W BARREL 45FT E + 41FT S C/L INT	BY 2364A
BASELINE (1965)	62.558	L+T E CB ALAMEDA ST C/L PROD RAYMOND AVE 27FT± E C/L ALAMEDA ST	BY 2365
BASELINE (1965)	61.935	L + T E CB ALAMEDA ST 27FT E C/L + ON C/L PROD TICHNOR ST	BY 2367
BASELINE (1965)	61.663	L+T E CB ALAMEDA ST C/L PROD CALDWELL ST 26FT± E C/L ALAMEDA ST	BY 2368
BASELINE (1965)	61.368	L + T E CB ALAMEDA ST 27FT E C/L ON C/L PROD JOHNSON ST	BY 2369
BASELINE (1965)	61.053	L + T E CB ALAMEDA ST 27FT E C/L ON C/L PROD BENNETT ST	BY 2370
BASELINE (1965)	60.262	L+BN E CB ALAMEDA ST OPP MILE POST NO 495 SPRR	BY 2373
BASELINE (1965)	59.768	STD DISC TOP OF CONC POST 3FT± N OF MILE POST NO 495 SPRR + 38FT± E C/L SPRR 2FT± BELOW TOP OF RAIL MKD (Q 768 1945)	BY 2374A
BASELINE (1965)	58.740	L + BN E CB ALAMEDA ST 22FT E C/L + 18FT N C/L ON + OFF RAMP ARTESIA FRWY	BY 2375
BASELINE (1965)	62.940	L+BN E CB ALAMEDA ST @ ANGLE POINT OF WINGWALL @ NE COR BRIDGE NO 774 OVER COMPTON CREEK 22FT± E C/L + 174FT± N C/L CREEK + 400FT± S ARTESIA BLVD	BY 2377
BASELINE (1965)	58.161	FC BR CAP @ S END OF WINGWALL @ NE COR SPRR BRIDGE 90FT± E C/L ALAMEDA ST + 450FT± S C/L ARTESIA BLVD MKD (RBM 44-33)	BY 2378
BASELINE (1965)	62.969	FC BR CAP 5FT± S ANGLE POINT WINGWALL SW COR BRIDGE NO 774 ON ALAMEDA ST OVER COMPTON CREEK 28FT± W C/L + 600FT± S ARTESIA BLVD MKD (BM 44-33)	BY 2379
BASELINE (1965)	51.483	FC BR CAP E CB ALAMEDA ST 22FT± E C/L OPP MAIN ENT DOMINQUEZ SEMINARY 0.25MI± N DOMINQUEZ JCT 18FT± S PP NO 241560E MKD (RBM 44-32)	BY 2380
BASELINE (1965)	52.831	FC BR CAP SE COR 8X8FT CONC VALVE BOX 58FT± E C/L SPRR + 125FT± E C/L ALAMEDA ST OPP MAIN ENT TO DOMINQUEZ SEMINARY MKD (BM 44-32)	BY 2381A
BASELINE (1965)	50.572	L+BN W CB ALAMEDA ST 22FT± W C/L OPP NE COR 8FT CHAIN LINK FENCE AROUND SO CAL EDISON SUB-STATION PROPERTY 650FT± N DOMINGUEZ JCT	BY 2382
BASELINE (1965)	51.476	CS MON IN CONC FLUSH APPROX C/L PERR TRACTS 50FT± W C/L ALAMEDA ST 56FT± N OF N COR DOMINGUEZ JCT STA HSE BET ARTESIA BLVD + DEL AMO BLVD MKD (K-5 RE 2177 1942)	BY 2383
BASELINE (1965)	46.677	L+BN W CB ALAMEDA ST 22FT± W C/L + 530FT± S C/L LONG BEACH LINE PERR 37FT± N TP NO 16767R	BY 2384
BASELINE (1965)	45.864	L+BN E CB ALAMEDA ST 22FT± E C/L + 1630FT± S C/L LONG BEACH LINE PERR 47FT± S TP NO 662675H	BY 2385
BASELINE (1965)	42.914	STD USGS DISC IN CONC POST 3IN UP 30FT± E C/L SPRR 55FT± W C/L ALAMEDA ST E BARREL OPP BLDG NO 19600 (WOLF RANGE CORP) 4FT± N TP NO LU 2FT± W OF WHITE WOODEN WITNESS POST MKD (P768 1945)	BY 2388A

QUAD-YEAR	ELEV	DESCRIPTION (INCLUDE QUAD AND YEAR IN DESCRIPTION)	BM NUMBER
BASELINE (1965)	41.337	L+BN E CB ALAMEDA ST W BARREL 22FT± E C/L 3FT± S OF TP NO 429291H OPP BLDG NO 19722	BY 2389A
BASELINE (1965)	40.852	CUT SPK E CB ALAMEDA ST W BARREL 22FT± E C/L 1FT± W OF TP NO 457450H 0.25MI± N OF DEL AMO BLVD	BY 2390
BASELINE (1965)	37.838	CS MON IN WELL 2FT N C/L DEL AMO BLVD + 50FT W C/L ALAMEDA W BARREL MKD COMPTON J7 1942	BY 2391
BASELINE (1965)	37.707	L+T E CB 2FT± S OF END OF CB @ SE COR ALAMEDA ST W BARREL + DEL AMO BLVD 4FT± N TP NO 427134H 65FT± S + 22FT± E C/L INT	BY 2392
BASELINE (1965)	32.655	L+SPK E CB ALAMEDA ST W BARREL 22FT± E C/L 48FT± N PP NO 577434 1400FT± S DEL AMO BLVD	BY 2393
BASELINE (1965)	32.081	L+BN E CB ALAMEDA ST W BARREL 22FT± E C/L 23FT± PP NO 577803R 900FT± N OF DOMINGUEZ ST	BY 2394
BASELINE (1965)	31.658	L + T NR MCR @ SE COR ALAMEDA ST + DOMINGUEZ ST 22FT S + 45FT E/O C/L INT E BAR	BY 2414
BASELINE (1965)	31.333	L + T IN S CB 20FT S C/L DOMINGUEZ ST 1FT W/O DRWY TO HSE = 2638 DOMINGUEZ ST	BY 2415
BASELINE (1965)	31.991	L+T S CB DOMINGUEZ ST 25FT± W DRWY HSE NO 2738 DOMINGUEZ ST (FRONT FIRE PLUG)	BY 2416
BASELINE (1965)	32.865	L + S IN W CB 3FT S BCR @ SW COR DOMINGUEZ ST + SANTA FE AVE 38FT S + 40FT W C/L INT	BY 2417
BASELINE (1965)	67.506	L+T NR W ED OF CONC WK AROUND HSE NO 8700 ALONDRA BLVD 57FT± S + 25FT± E C/L INT ALONDRA BLVD + HAYTER ST	BY 2589
BASELINE (1965)	67.466	LACS MON 30FT N + 70FT E C/L INT ALONDRA BLVD + CLARK AVE MKD BM 6-8 1951	BY 2596
BASELINE (1965)	73.352	L+T N CB 4FT± W CB RET @ NW COR ALONDRA BLVD + BLAINE AVE	BY 2597
BASELINE (1965)	73.486	L+T N CB 2FT± E CB RET @ NE COR ALONDRA BLVD + BLAINE AVE	BY 2598
BASELINE (1965)	74.185	L+BN S CB 1FT± W CB RET @ SW COR ALONDRA BLVD + BELLFLOWER BLVD 38FT S + 46FT W C/L INT	BY 2600
BASELINE (1965)	92.143	CO FLOOD CONTROL BR DISC IN SW COR BR <b>OUT</b> B977 OVER SAN GABRIEL RIV 25FT± C/L ALONDRA BLVD MKD (BM 75-46)	BY 2611
BASELINE (1965)	89.341	CORP OF ENGINEERS BR DISC IN SE COR BR <b>OUT</b> B977 OVER SAN GABRIEL RIV 25FT S C/L ALONDRA BLVD MKD (SG 18 1958)	BY 2612
BASELINE (1965)	73.102	L+T N CB 1FT± E CB RET @ NE COR ALONDRA BLVD SERVICE RD + DUMONT AVE	BY 2616A
BASELINE (1965)	73.653	L+T N CB 1FT± E OF CB RET @ NE COR ALONDRA BLVD SERVICE RD + LEIBACHER AVE	BY 2617
BASELINE (1965)	72.948	CS REF MON IN WELL 9IN DN ON NE COR <b>OUT</b> RD + ALONDRA BLVD 85FT± N + 50FT± E C/L INT MKD (ARTESIA A-2 NO 4 1960)	BY 2619
BASELINE (1965)	44.262	L + BN 1FT E BCR @ NE COR CARSON ST + 1ST ALLEY W WOODRUFF AVE 40FT N + 400FT W C/L INT	BY 2678

QUAD-YEAR	ELEV	DESCRIPTION (INCLUDE QUAD AND YEAR IN DESCRIPTION)	BM NUMBER
BASELINE (1965)	44.772	L + T 2FT W BCR @ NW COR WOODRUFF AVE + CARSON ST 42FT N + 79FT W C/L INT MKD BM	BY 2679
BASELINE (1965)	39.974	RDBM TAG S CB 1FT± W BCR @ SW COR BELLFLOWER BLVD + CARSON ST 38FT± S + 70FT± W C/L INT	BY 2704A
BASELINE (1965)	39.747	L+T @ CTR CB RET @ NE COR BELLFLOWER BLVD + CARSON ST	BY 2706A
BASELINE (1965)	22.314	L + BN IN SO CB 1FT E/O BCR @ SE COR SPRING ST + PALO VERDE AVE 40FT S + 66FT E/O C/L INT	BY 2930A
BASELINE (1965)	21.636	CS MON (BR SPK IN CONC) @ INT PALO VERDE AVE + SPRING ST 18IN DN	BY 2931
BASELINE (1965)	21.191	LACS MON IN WELL 12IN DN 8FT S + 15FT E C/L INT NO SER RD SPRING ST + LOMINA AVE MKD BM 8-35	BY 2940
BASELINE (1965)	22.737	L+N S CB SPRING ST (N SERVICE RD) C/L LOMINA AVE PROD	BY 2941
BASELINE (1965)	21.996	L + N IN CTR ISL S END PARKWAY SAN ANSELINE AVE 28FT N C/L SPRING ST SERVICE RD	BY 2942
BASELINE (1965)	22.842	L + NAIL IN SO CB SERVICE RD SPRING ST ON C/L PROD CHATWIN AVE 54FT N/O C/L SPRING ST	BY 2943
BASELINE (1965)	22.439	L + BN IN N CB 1FT E BCR 54FT N + 81FT E C/L INT SPRING ST + BELLFLOWER BLVD	BY 2944
BASELINE (1965)	21.532	LACS MON IN WELL 14IN DN W/ CITY OF L B COVER @ C/L INT SPRING ST + BELLFLOWER BLVD N EDGE	BY 2946
BASELINE (1965)	69.627	CS MON 5FT E C/L STUDEBAKER RD 5FT S ST 10IN DEEP	BY 3372
BASELINE (1965)	62.601	L+T DRWY HSE NO 17121 STUDEBAKER RD 5 FT W C/L 1FT± IN FROM N EDGE OF DRWY	BY 3373
BASELINE (1965)	55.605	CS MON W/CASE + COVER @ C/L INT STUDEBAKER RD + 183RD ST	BY 3378
BASELINE (1965)	53.153	L+T N EDGE CONC DRWY TO HSE NO 18810 5 FT W C/L STUDEBAKER RD	BY 3379
BASELINE (1965)	70.511	L+BN W CB PARAMOUNT BLVD 1FT N CB RET JEFFERSON ST + PARAMOUNT BLVD	BY 3628A
BASELINE (1965)	68.006	L+BN IN N CB 1FT± E BCR @ NE COR ALONDRA BLVD + PARAMOUNT BLVD 40FT± N + 48FT± E C/L INT	BY 3630
BELLFLWR (1970)	60.902	L+BR CTR CB RET @ SW COR ARTESIA ST + PARAMOUNT BLVD 54FT S + 45FT W C/L INT	BY 3631
BELLFLWR (1970)	52.395	L+BN E SIDE CONC BASE S GATE POST OF WIRE FENCE 45FT± W C/L PARAMOUNT BLVD 6FT± NE COR EDISON CO TRANSFORMER ON THE RICHFIELD OIL CO PROPERTY 5900 BLOCK OF PARAMOUNT BLVD	BY 3634
BASELINE (1965)	50.822	L+T E CB OBISPO AVE 6FT N BCR @ NE COR OBISPO AVE + SOUTH ST 65FT N + 10FT E C/L INT	BY 3637A
BASELINE (1965)	54.035	L + BN 1FT W BCR @ NW COR LAKEWOOD BL + SOUTH ST 40 N + 80FT W C/L INT	BY 3639
BELLFLWR (1970)	63.740	L+B CTR CB RET @ NW COR BIXBY AVE TO RAMONA ST (@ SE COR OF LARGE ISLAND)	BY 3669

QUAD-YEAR	ELEV	DESCRIPTION (INCLUDE QUAD AND YEAR IN DESCRIPTION)	BM NUMBER
BASELINE (1965)	56.682	L+BN S CB ALLINGTON ST 75FT± W C/L WOODRUFF AVE	BY 3676
BASELINE (1965)	56.895	L+BR W CB 3FT± N BCR @ NW COR ALLINGTON ST + CANEHILL AVE 75FT± N + 18FT± W C/L INT	BY 3679
BASELINE (1965)	57.450	RDBM TAG S CB 1FT± E BCR @ SE COR ALLINGTON ST + CANEHILL AVE 30FT S + 60FT± E C/L INT	BY 3680
BASELINE (1965)	55.927	CS MON C/L INT PALO VERDE AVE + ALLINGTON ST	BY 3681A
BASELINE (1965)	49.786	CS MON 88FT± S C/L SOUTH ST 9FT± E C/L PALO VERDE AVE	BY 3686
BASELINE (1965)	66.037	FC BR CAP @ E END BRIDGE OVER THE SAN GABRIEL RIV ON SOUTH ST @ SE COR OF BRIDGE (BM 7-54)	BY 3687
BASELINE (1965)	70.588	L+T @ W END OF BRIDGE OVER SAN GABRIEL RIV ON S SOUTH ST @ SW COR BRIDGE ON S CB	BY 3688A
BASELINE (1965)	58.142	L+T 1FT± S CB RET @ SW COR ASHWORTH ST + WOODRUFF AVE	BY 3702
BELLFLWR (1970)	62.309	RAM SET S CB 2FT± E BCR @ SW COR WOODRUFF AVE + ARTESIA BLVD 40FT± S + 73FT± W C/L INT	BY 3705
BASELINE (1965)	65.612	CS MON IN WELL 24FT W C/L ALAMEDA ST E BARREL 48FT N C/L COMPTON BLVD MKD (BM 5-21 RE 329 1951)	BY 4130A
BELLFLWR (1970)	81.919	FC BR DISC E ABUT BRIDGE B-1132 OVER LA RIV 46FT± N C/L ALONDRA BLVD MKD (BM 4-23)	BY 4331
BELLFLWR (1970)	64.282	L+BN W CB HUNSAKER AVE 40FT W + 85FT N C/L INT ALONDRA BLVD + HUNSAKER AVE	BY 4335
BELLFLWR (1970)	64.860	RDBM TAG N CB 1FT± E BCR @ NE COR ALONDRA BLVD + HUNSAKER AVE 40FT N + 101FT E C/L INT	BY 4336
BASELINE (1965)	50.012	L+T NR SE COR CONC SLAB @ ENT BLDG NO 5584 PARAMOUNT BLVD 60FT± E C/L PARAMOUNT BLVD + 105FT± S C/L 56TH ST	BY 4565
BASELINE (1965)	51.026	RDBM TAG 1.5FT± E BCR @ NE COR PARAMOUNT BLVD + SOUTH ST 40FT± N + 75FT± E C/L INT	BY 4567A
BASELINE (1965)	67.464	L + SPK 3FT E BCR @ SE COR COMPTON BLVD + BRADFIELD AVE 40FT S + 42FT E C/L INT	BY 4571
BASELINE (1965)	65.974	CITY OF COMPTON MON IN WELL 18IN DP C/L COMPTON BLVD + C/L PROD BRADFIELD AVE N	BY 4572
BASELINE (1965)	66.237	CITY OF COMPTON MON IN WELL 12IN DP @ C/L INT COMPTON BLVD + LONG BEACH BLVD 5FT± N OF MON TO THE S	BY 4574
BASELINE (1965)	66.562	RDBM TAG 15FT N BCR @ NE COR COMPTON BLVD + BURRIS AVE 55FT N + 14FT E C/L INT	BY 4575
BASELINE (1965)	66.140	L + T 15FT S BCR @ SW COR COMPTON BLVD + BURRIS AVE 52FT S + 14FT W C/L INT	BY 4576A
BASELINE (1965)	64.431	L + SPK CTR CB RET @ SE COR SANTA FE AVE + COMPTON BLVD 31FT S + 44FT E C/L INT	BY 4577
BASELINE (1965)	64.695	L + SPK 1FT N BCR @ NE COR SANTA FE AVE + COMPTON BLVD 42FT N + 40FT E C/L INT	BY 4578

QUAD-YEAR	ELEV	DESCRIPTION (INCLUDE QUAD AND YEAR IN DESCRIPTION)	BM NUMBER
BASELINE (1965)	57.688	CS MON IN WELL 8IN DN ON SW COR CLARK AVE + ASHWORTH ST 38FT S + 30FT W C/L INT MKD (BM 32 3)	BY 4961
BASELINE (1965)	46.763	RDBM TAG W CB 6FT N BCR OF ISLAND @ NW COR PARAMOUNT BLVD + HARDWICK ST 45FT N + 40FT W C/L INT	BY 4962
BASELINE (1965)	46.925	RDBM TAG W CB 2FT S BCR OF ISLAND @ SW COR PARAMOUNT BLVD + HARDWICK ST 37FT S + 43FT W C/L INT	BY 4963
BASELINE (1965)	38.426	USC+GS BR CAP NR S END E ABUT CONC BRIDGE 50FT± S C/L CARSON ST + 500FT± E CLARK AVE MKD (E 780 RESET 1953)	BY 4996A
BASELINE (1965)	55.214	USC+GS BR CAP E END CONC BRIDGE 1000FT± W LAKEWOOD DR NR CTR GOLF COURSE 50FT± N C/L CARSON ST MKD (C780 1946)	BY 5000
BASELINE (1965)	55.249	SP HD BT E END HDWL CONC BRIDGE 1000FT± W LAKEWOOD DR NR CTR GOLF COURSE 50FT± S C/L CARSON ST MKD (U)	BY 5001
BASELINE (1965)	56.142	RDBM TAG N CB 1FT± W ENT CATCH BASIN 40FT± N C/L + 25FT± E C/L PROD LEVELSIDE AVE	BY 5002
BASELINE (1965)	55.823	RDBM TAG S CB 40FT± S C/L CARSON ST + 3FT± W C/L PROD LEVELSIDE AVE	BY 5003A
BASELINE (1965)	60.316	RDBM TAG N CB 2FT± E BCR @ NE COR CARSON ST + PARAMOUNT BLVD 40FT± N + 80FT± E C/L INT	BY 5004A
BELLFLWR (1970)	67.340	L+BRAD W CB 1FT± N BCR @ NW COR CARSON ST + DEEBOYER AVE 90FT± N + 18FT± W C/L INT MKD (BM)	BY 5006
BELLFLWR (1970)	62.359	RDBM TAG N CB 1FT± E BCR @ NE COR CHERRY AVE + BIXBY AVE 30FT± N + 88FT± E SPLIT OF CBS	BY 5008
BELLFLWR (1970)	62.329	RDBM TAG S CB 3FT± E BCR @ SE COR CHERRY AVE + BIXBY AVE 30FT± S + 91FT± E SPLIT OF CBS	BY 5009
BELLFLWR (1970)	56.743	LONG BEACH MON IN WELL 8IN DN @ OR NR C/L INT 37TH ST + CHERRY AVE	BY 5010
BELLFLWR (1970)	57.187	RDBM TAG E CB 74FT± E C/L CHERRY AVE + 33FT± N C/L PROD 37TH ST	BY 5011
BELLFLWR (1970)	54.739	L+BRAD N SIDE CONC APRON OF DRWY TO <b>OUT</b> SUPPLY CO 48FT± E C/L CHERRY AVE + 50FT± C/L WARDLOW RD MKD (BM)	BY 5012
BASELINE (1965)	53.469	CITY OF LONG BEACH MON IN WELL 8IN DN ON NW COR CHERRY AVE + WARDLOW RD 5FT± N OF N CB + 45FT± W OF W CB MKD (BM 93)	BY 5014
BASELINE (1965)	58.199	USC+GS BM VERTICAL IN NE COR WALL OF LONG BEACH WATER DEPT PUMP HSE SW COR CHERRY AVE + WARDLOW RD 70FT± S + 219FT± W C/L INT	BY 5015
BASELINE (1965)	36.648	RDBM TAG W CB 6FT± N BCR @ NW COR PALO VERDE AVE + CARSON ST 82FT± N + 30FT± W C/L INT	BY 5026
BASELINE (1965)	36.602	RDBM TAG E CB 6FT± N BCR @ NE COR PALO VERDE AVE + CARSON ST 82FT± N + 30FT± E C/L INT	BY 5027
BASELINE (1965)	45.002	CS MON FLUSH W/WLK 2FT± NW CTR CB RET @ NW COR CARSON ST + WOODRUFF AVE 57FT± N + 48FT± W C/L INT MKD (K9 RM NO 3)	BY 5029

QUAD-YEAR	ELEV	DESCRIPTION (INCLUDE QUAD AND YEAR IN DESCRIPTION)	BM NUMBER
BASELINE (1965)	42.264	RDBM TAG S CB OF N SERVICE RD 54FT± N C/L CARSON ST 150FT± E INT WOODRUFF AVE + CARSON ST OPP ENT TO WATER PUMP HSE	BY 5030
BASELINE (1965)	41.800	RDBM TAG N CB OF N SERVICE RD 82FT± N C/L CARSON ST 150FT± E INT WOODRUFF AVE + CARSON ST OPP ENT TO WATER PUMP HSE	BY 5031A
BASELINE (1965)	56.200	L+T E CB 2FT± S BCR @ SE COR WOODRUFF AVE + ALLINGTON ST 76FT± S + 40FT± E C/L INT MKD (BM)	BY 5045
BASELINE (1965)	62.699	RDBM TAG 2FT± S BCR @ SW COR PARAMOUNT BLVD + WARWOOD RD 47FT± S + 76FT± W C/L INT	BY 5052
BASELINE (1965)	62.684	RDBM TAG W CB 2FT± N BCR @ NW COR PARAMOUNT BLVD + WARWOOD RD 48FT± N + 76FT± W C/L INT	BY 5053A
BASELINE (1965)	60.701	RDBM TAG W CB 2FT± S BCR @ SW COR PARAMOUNT BLVD + GREENTOP ST 46FT S + 76FT± W C/L INT	BY 5054
BASELINE (1965)	60.418	RDBM TAG W CB 2FT± N BCR @ NW COR PARAMOUNT BLVD + GREENTOP ST 46FT± N + 76FT± W C/L INT	BY 5055
BASELINE (1965)	54.531	RDBM TAG W CB 2FT± N BCR @ NW COR PARAMOUNT BLVD + CENTRALIA ST 47FT± N + 76FT± W C/L INT	BY 5057
BASELINE (1965)	63.935	R D MON NR N END CONC HDWL CULV 27FT± E C/L MAIN TRACK SPRR 45FT W C/L ALAMEDA ST E BARREL 17FT S C/L PROD RAYMOND ST MKD (19)	BY 5783
BASELINE (1965)	63.762	USC+GS MON NR S END CULV HDWL 10FT± W C/L SPRR + 70FT± E C/L ALAMEDA ST W BARREL 90FT± N C/L PROD CALDWELL ST MKD (T 615 1941)	BY 5784
BASELINE (1965)	54.898	MWD MON 3FT E OF E CB ALAMEDA ST 26FT E C/L 42FT± N PP NO 241565E OPP GATE NO 18011 0.5MI± S ARTESIA BLVD MKD (56E 1933)	BY 5785A
BASELINE (1965)	52.893	RDBM MON FLUSH 4FT E OF E CB ALAMEDA ST 26FT± E C/L + 19FT± S PP NO 241565E 61FT± S OF S END CONC CULV 0.5MI± S ARTESIA BLVD MKD (BM 15)	BY 5786
BASELINE (1965)	49.277	USC+GS MON NR N END SFRR CULV HDWL 8FT W C/L SFRR TRACKS 67FT E C/L ALAMEDA ST + 450FT± S C/L INT ALAMEDA ST + PERR MKD (F52 1926)	BY 5787
BELLFLWR (1970)	64.846	L+T E CB 2FT± S BCR @ SE COR ATLANTIC AVE + MYRRH ST 27FT± S + 36FT± E C/L INT	BY 6120
BELLFLWR (1970)	64.863	L+T W CB 1FT± S BCR @ SW COR ATLANTIC AVE + MYRRH ST 26FT± S + 36FT± W C/L INT	BY 6121
BASELINE (1965)	31.540	CS MON 10IN DN 14FT± S + 72FT± W C/L INT DOMINGUEZ ST + SANTA FE AVE MKD (BM 8-57 RE 63)	BY 6146
BASELINE (1965)	53.875	BT SPK IN CONC ABUT OF UPRR + PERR CROSSING OVER LONG BEACH FREEWAY NR DOMINGUEZ ST 18FT± W OF W RAIL PERR + 8FT± N OF N RAIL UPRR	BY 6147
BASELINE (1965)	57.126	CS BR DISK CTR S HDWL W CONC ABUT UPRR BRIDGE OVER LA RIVER @ MILE POST 17.13 10FT± E /F W END HDWL MKD (BM 8-54B 1960)	BY 6148
BASELINE (1965)	57.172	CHIS SQ TOP NE COR CONC ABUT 9FT± N UPRR @ W END BRIDGE OVER LA RIVER @ MILE POST 17.13	BY 6149
BASELINE (1965)	57.263	CS BR DISK CTR N HDWL E CONC ABUT 6FT± E UPRR BRIDGE OVER LA RIV @ MILE POST 17.13 MKD (BM 8-54B 1960)	BY 6150

