

LOS ANGELES COUNTY
DEPARTMENT OF PUBLIC WORKS

BENCH MARK LIST



BELLFLOWER QUAD
LAKEWOOD QUAD
SOUTH GATE QUAD

1990 ADJUSTMENT

PREFACE 1990

The Department of Public Works level net is composed of more than 1,700 miles of levels supporting in excess of 9,000 bench marks. In 1990, a major readjustment of the Baseline and nets was undertaken. To emphasize the complete break with previous elevations, the CY, CG & CL series bench marks have been relabeled DY, DG, & DL, respectively.

To facilitate the adjustment, indexing, and distribution of adjusted values of the net, the County territory is divided into 33 quads or areas. For identification purposes each quad is given a name, viz., "Rosemead," "La Mirada," "Santa Fe", etc. When bench marks and elevations in these nets are used, the name of the quad and the date of the adjustment must be included in the bench mark description, e.g.,

DY 9701 - RDBM TAG IN CB 5FT S/O BCR @ SE COR BOLSA ST & DOMINGUEZ ST
63FT S & 20FT E/O C/L INT
(GARDENA - 1990) ELEV. 16.704

Experience indicates that this general adjustment will, for the most part, remain sound for the next 10 years. Updating constrained adjustments will be made in 5 years. It is expected that these updating adjustments will be in the nature of a few hundredths of a foot. When a quad is readjusted, new elevation lists will be published and the date of the readjustment will be noted in the bench mark description. Two bench marks with different adjustment dates will not normally agree with each other.

The basic accuracy of the net is reflected by an indicated field probable error of plus or minus 0.012 foot per mile of leveling as determined from over 600 conditions of closure. However, many years experience in vertical control in the greater Los Angeles basin and Antelope Valley indicate that because of varying degrees of subsidence and heaving, the true datum is recovered only by obtaining substantial agreement of a number of bench marks.

The users of this net are invited to assist in its maintenance by notifying this Department of cases of obliteration, apparent mistakes in descriptions or elevations, and proven disturbance of bench marks.

DATUM: U.S. Coast and Geodetic Survey Sea Level Datum
of 1929, through the medium of the Los Angeles
County Engineer Precise Level Net.

ABBREVIATIONS USED IN BENCH MARK LISTINGS

ABUT -----	Abutment	ECR -----	End of Curb Return
ALG -----	Along	EC -----	End of Curve
ANG PT -----	Angle Point	ENT -----	Entrance
B/W -----	Back of Walk	FL -----	Floor
BCR -----	Beginning of Curb Return	FTG -----	Footing
BC -----	Beginning of Curve	FRWY -----	Freeway
BLDG -----	Building	F/W -----	Front of Walk
BM -----	Bench Mark	GAR -----	Garage
BT SPK -----	Boat or Bolt Spike	HDWL -----	Headwall
BR CAP -----	Brass or Bronze Cap	HSE -----	House
C B -----	Catch Basin	HWY -----	Highway
CTR -----	Center	INT -----	Intersection
C/L -----	Center Line	IP -----	Iron Pipe
C/L INT -----	Center Line Intersection	LT -----	Left
C/L PROD -----	Center Line Produced	LACE -----	L.A. City Engineer
CONC -----	Concrete	LACS -----	L.A. Co. Engineer
COR -----	Corner	LAFC -----	L.A. Co. Flood Control
COE -----	Corps of Engineers	L&BN -----	Lead and Bench Nail
CULV -----	Culvert	L&BR -----	Lead and Brad
CYN -----	Canyon	L&N -----	Lead and Nail
CB -----	Curb	L&SPK -----	Lead and Spike
CS MON -----	Co. Eng. Monument	L&T -----	Lead and Tack
CT SPK -----	Cut Spike	MCR -----	Middle of Curb Return
DPW -----	Dept. of Public Works	MKD -----	Marked
DR -----	Drive or Driveway	MC -----	Middle of Curve
E/O -----	East of	MON -----	Monument

ABBREVIATIONS USED IN BENCH MARKS (CON'T)

N/O ----- North of
NR ----- Near
OPP ----- Opposite
PI ----- Point of Intersection
PK&W ----- PK Nail and Washer
P/L ----- Property Line
POST ----- Point of Semi-Tangent
PP ----- Power Pole
PVMT ----- Pavement
PROD ----- Produced
RD ----- Road
RDBM ----- Road Dept. Bench Mark
RDBM TAG ----- Road Dept. Bench Mark Tag
RR ----- Railroad
RT ----- Right
R/W ----- Right of Way
SDMH ----- Storm Drain Manhole
SMH ----- Sewer Manhole
SPK ----- Spike
ST&W ----- Spike Tin and Washer
S/O ----- South of
TP ----- Telephone Pole
USC&GS ----- U.S. Coast and Geodetic Survey
USGS ----- U.S. Geological Survey
WK ----- Walk
W/O ----- West of

NORWALK

QUAD

A

R

T

E

S

I

A

Q

U

D

10218
10217
9305
9306
7772
7773
10219
9304
9302
9301

BLVD
GARFIELD AVE
CHERRY AVE
TESIA

799
10222
9290
9292
10328
10327
804
803
9420
8783
8784
10325
10326

9292
10328
10327
804
803
9420
8783
8784
10325
10326

9419
7096
7097
3634
7095
7094
7109
1567
SOUTH
166
165
164
163
162

10239
8801
7108
8802
4962
4963
8773
8776
5057
8803
5055
5054
5053
5052

EL AMO BLVD
8771 9432
10061
10062
PARAMOUNT
9416
9417
7075
5006
5008
5009
10229
10230
8591
8592
7066
10231
8594
8595
7064
7063
7062
7061
10232
9393
9392
7060
6155
8598
7059
10064

9293
7768
BLVD
10222
9290
2343
9289
10223
769
9288
7029
9287
9286
2596
766
765
763
2597
2598
7028
479
478
477
960
7078
9375
9376
2616
2617
9377
9378
9379
8808
9381
9382
7080
9383
10238
8810
8812
3686
9385
8811

BLVD
FRWY
BELLFLOWER BLVD
8755
7281
1499
10063
ARTESIA AVE
121
122
123
ASHWORTH
8800
7098
4961
1438
7100
7101
7102
124
8756
7103
7104
3702
3676
5045
3679
3680
7106
3681
9397
8812
SOUTH ST
3686
9385
8811

BLVD
FRWY
BELLFLOWER BLVD
8755
7281
1499
10063
ARTESIA AVE
121
122
123
ASHWORTH
8800
7098
4961
1438
7100
7101
7102
124
8756
7103
7104
3702
3676
5045
3679
3680
7106
3681
9397
8812
SOUTH ST
3686
9385
8811

BLVD
FRWY
BELLFLOWER BLVD
8755
7281
1499
10063
ARTESIA AVE
121
122
123
ASHWORTH
8800
7098
4961
1438
7100
7101
7102
124
8756
7103
7104
3702
3676
5045
3679
3680
7106
3681
9397
8812
SOUTH ST
3686
9385
8811

BLVD
FRWY
BELLFLOWER BLVD
8755
7281
1499
10063
ARTESIA AVE
121
122
123
ASHWORTH
8800
7098
4961
1438
7100
7101
7102
124
8756
7103
7104
3702
3676
5045
3679
3680
7106
3681
9397
8812
SOUTH ST
3686
9385
8811

BLVD
FRWY
BELLFLOWER BLVD
8755
7281
1499
10063
ARTESIA AVE
121
122
123
ASHWORTH
8800
7098
4961
1438
7100
7101
7102
124
8756
7103
7104
3702
3676
5045
3679
3680
7106
3681
9397
8812
SOUTH ST
3686
9385
8811

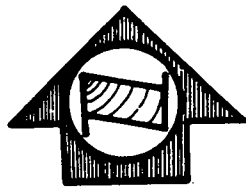
BLVD
FRWY
BELLFLOWER BLVD
8755
7281
1499
10063
ARTESIA AVE
121
122
123
ASHWORTH
8800
7098
4961
1438
7100
7101
7102
124
8756
7103
7104
3702
3676
5045
3679
3680
7106
3681
9397
8812
SOUTH ST
3686
9385
8811

WER QUAD

2-20-91

LAKEWOOD

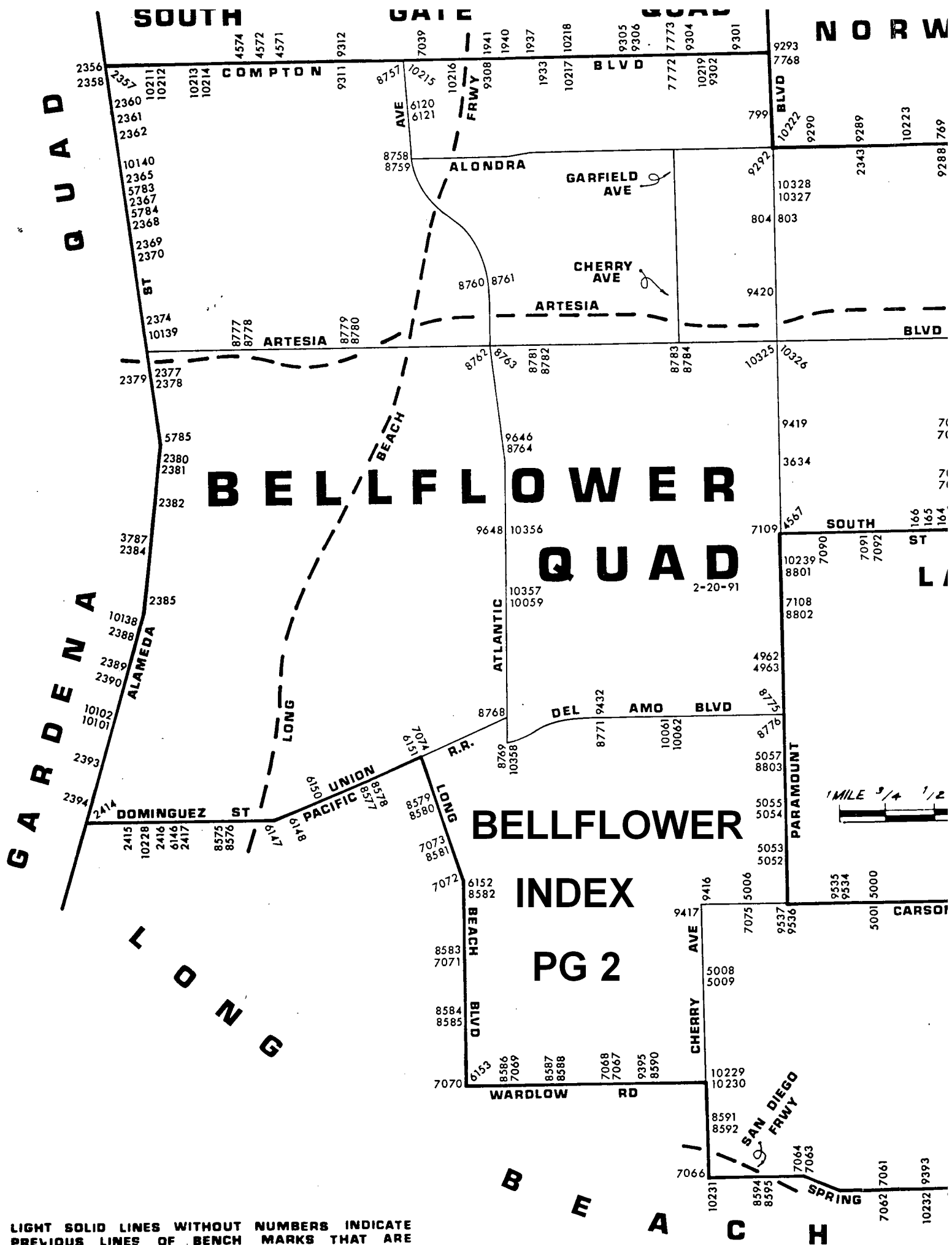
QUAD



BELLFLOWER INDEX PG 1

M A C H

Q U A D

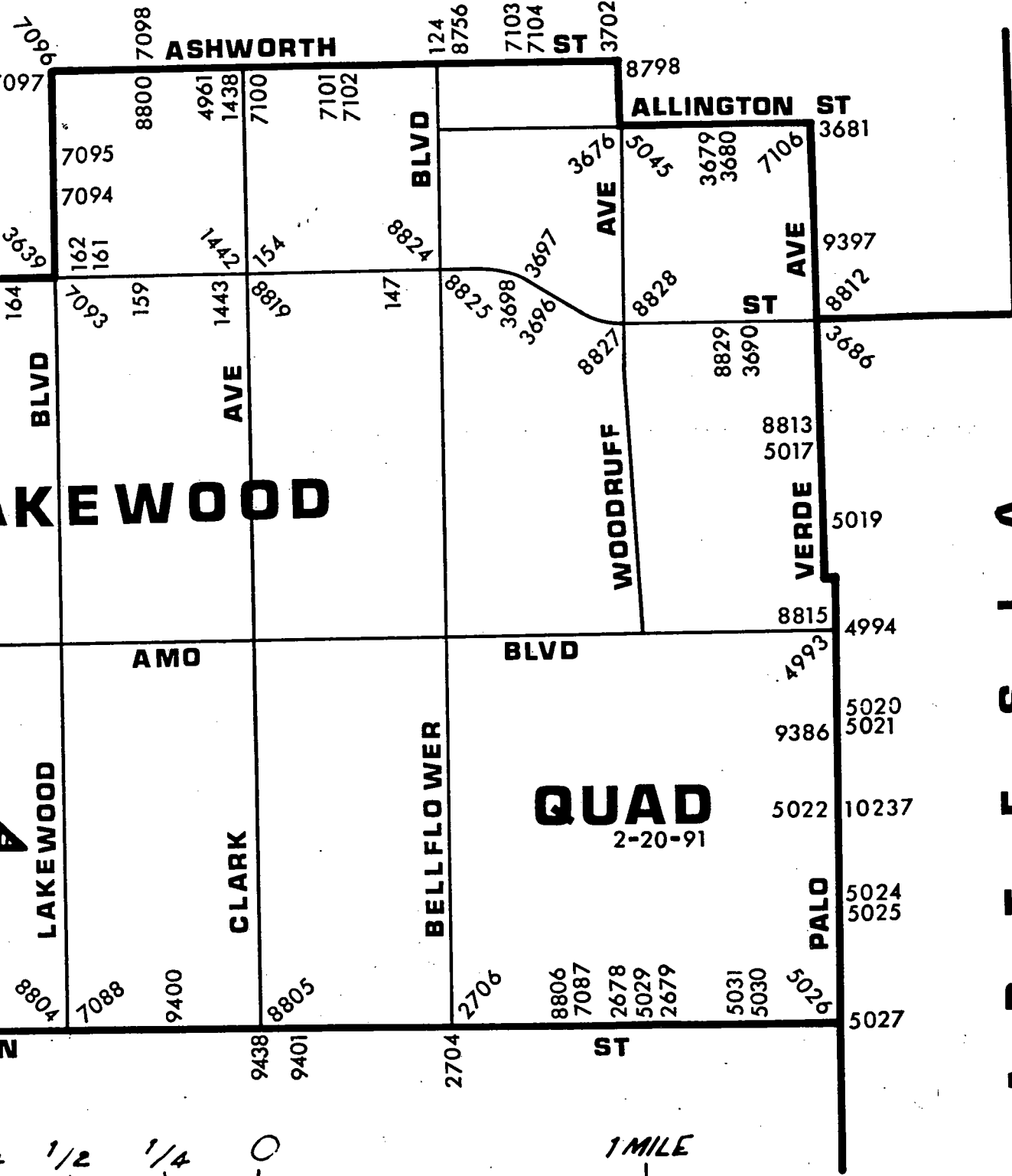


LIGHT SOLID LINES WITHOUT NUMBERS INDICATE PREVIOUS LINES OF BENCH MARKS THAT ARE NOT INCLUDED IN THE 1980 ADJUSTMENT.

Q U A D

Q U A D

A R T E S I A



SCALE

LAKWOOD

INDEX PG 1

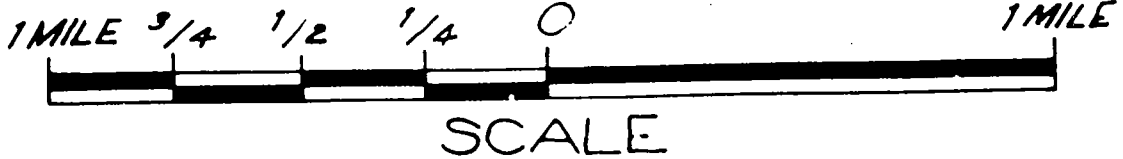
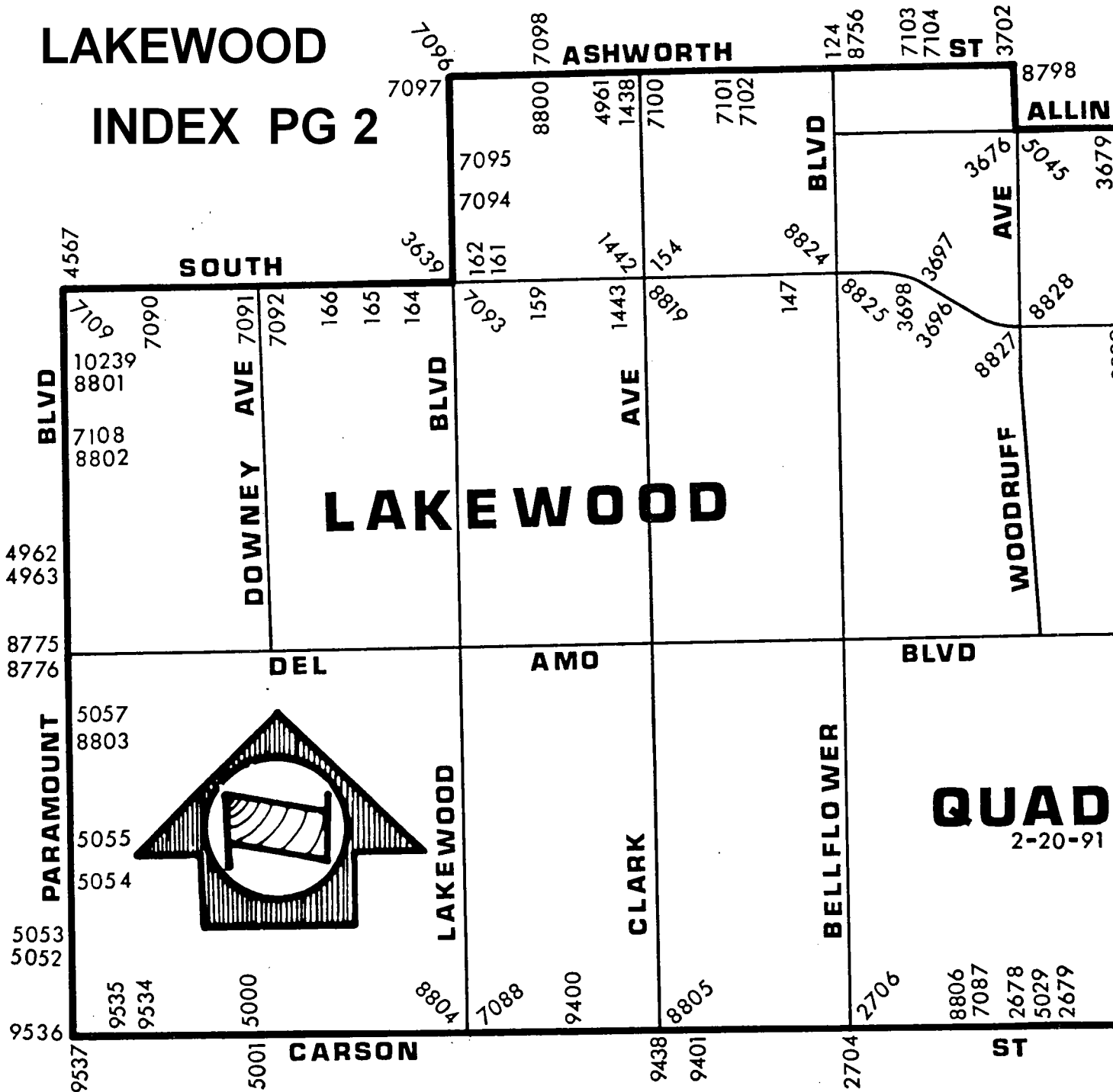
OLID LINES WITHOUT NUMBERS INDICATE
S LINES OF BENCH MARKS THAT ARE
CLUDED IN THE 1980 ADJUSTMENT.

Q U A D

LAKWOOD

INDEX PG 2

B E L L F L O W E R



LIGHT SOLID LINES WITHOUT NUMBERS INDICATE PREVIOUS LINES OF BENCH MARKS THAT ARE NOT INCLUDED IN THE 1980 ADJUSTMENT.

RIVERA

QUAD

QUAD

SOUTH GATE

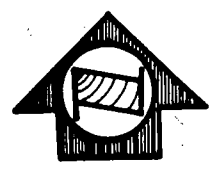
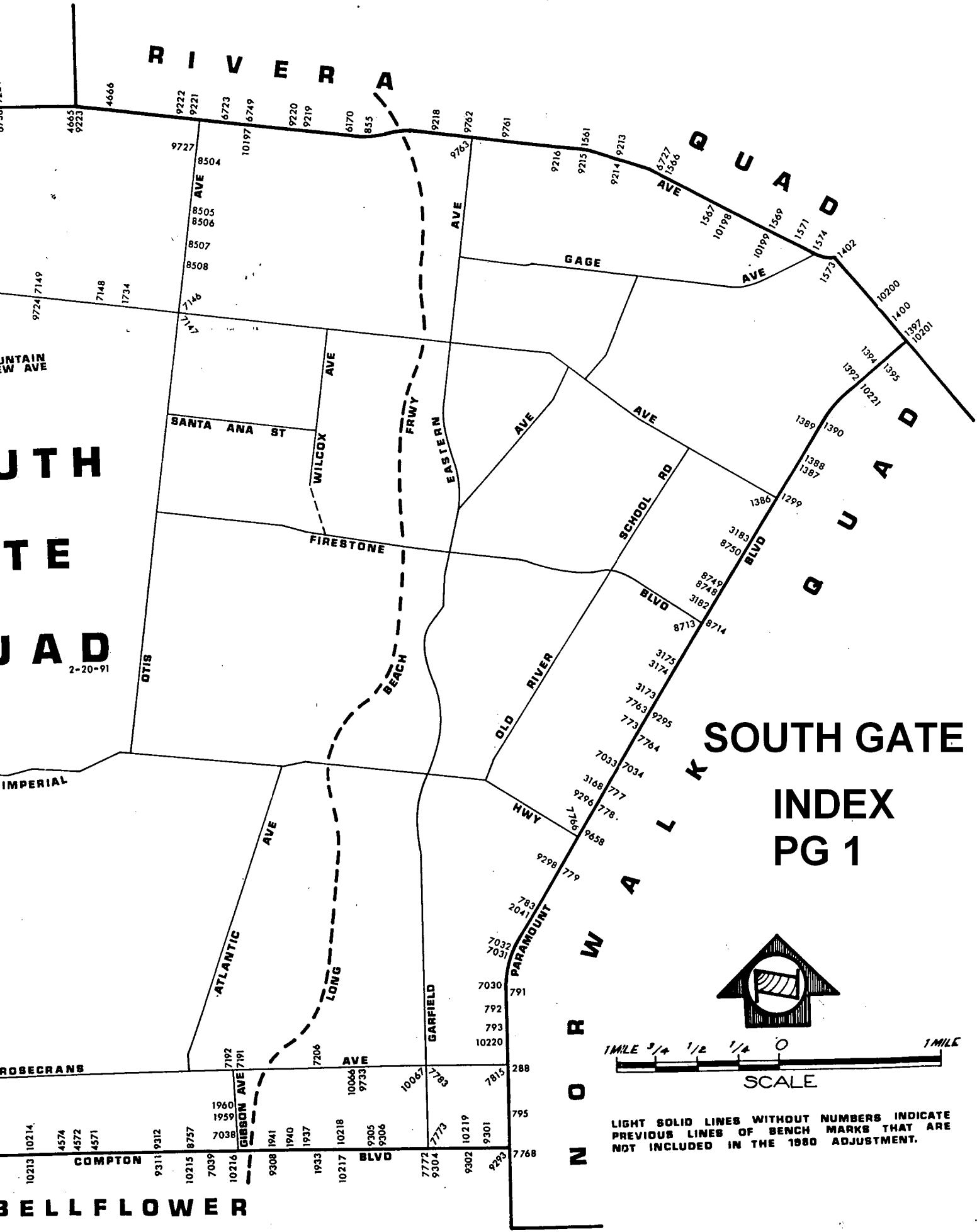
INDEX

PG 1

NORWALK

QUAD

JTH
TE
JAD
2-20-91



SCALE

LIGHT SOLID LINES WITHOUT NUMBERS INDICATE PREVIOUS LINES OF BENCH MARKS THAT ARE NOT INCLUDED IN THE 1980 ADJUSTMENT.

RIVERA

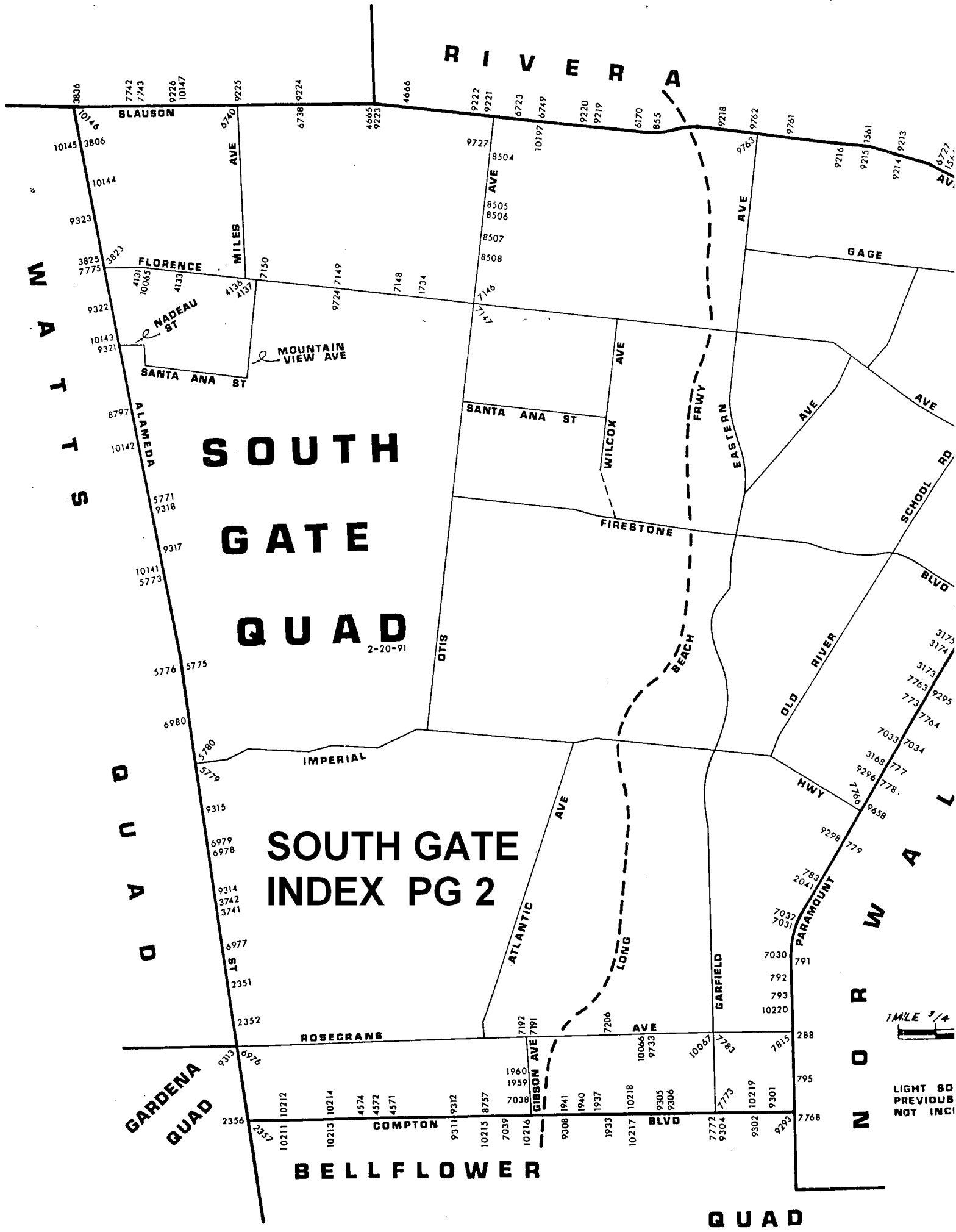
W
A
T
S

Q
U
A
D

N
O
R
W
A
L

SOUTH GATE QUAD

SOUTH GATE INDEX PG 2



1/4 MILE

LIGHT SO PREVIOUS NOT INCL

QUAD-YEAR	ELEV	DESCRIPTION (INCLUDE QUAD AND YEAR IN DESCRIPTION)	BM NUMBER
BELLFLWR (1990)	63.481	FCBM 2FT N BCR @ NE COR BELLFLOWER BLVD & RAMONA ST 42FT N & 42FT W C/L INT MKD (74-19C)	DY 121
BELLFLWR (1990)	61.756	L&BN 1FT N CB RET @ NW COR CEDAR AVE & BELLFLOWER BLVD 33FT N & 42FT W C/L INT	DY 122
BELLFLWR (1990)	60.177	L&SPK 5FT N/O BCR @ NW COR ROSE ST & BELLFLOWER BLVD 40FT N & 42FT W C/L INT	DY 123
BASELINE (1990)	59.050	L&T 1FT W CB RET @ NW COR ASHWORTH ST & BELLFLOWER BLVD 18FT N & 62FT W/O C/L INT	DY 124
LAKEWOOD (1990)	54.799	BT SPK E CB AUTRY AVE 85FT N C/L SOUTH ST & 16FT E/O C/L AUTRY AVE MKD (BM LC 99)	DY 147
LAKEWOOD (1990)	53.414	FC MON N CB SOUTH ST 52FT N C/L & 58 E C/L CLARK AVE MKD (BM 74-504)	DY 154
LAKEWOOD (1990)	54.111	L&T N CB SERVICE RD 8FT W BCR @ NW COR GRAYWOOD AVE & SOUTH ST 80FT N & 48FT W C/L INT	DY 159
LAKEWOOD (1990)	54.307	L & T 10FT W BCR @ NW COR BLACKTHORNE AVE & SOUTH ST 80FT N & 50FT W C/L INT	DY 161
LAKEWOOD (1990)	53.986	L&T N CB SERVICE RD 5FT W BCR @ NW COR BONFAIR AVE & SOUTH ST 80FT N & 50FT W C/L INT	DY 162
BASELINE (1990)	53.294	L&T W CB 1FT N CB RET @ NW COR OLIVA AVE & SOUTH ST (SERVICE RD) 110FT N & 20FT W/O C/L INT	DY 164
BASELINE (1990)	52.876	L&T N CB SERVICE RD 2FT W CB RET @ NW COR CASTANA AVE & SOUTH ST 89FT N & 57FT W C/L INT	DY 165
BASELINE (1990)	52.564	L&T N CB SERVICE RD 1FT W CB RET @ NW COR HAYTER AVE & SOUTH ST 89FT N & 56FT W C/L INT	DY 166
BASELINE (1990)	73.374	4.5 IN IP WITH L&T 6IN BACK WK ON SE COR PARAMOUNT BLVD & ROSECRANS AVE 244FT S C/L 50FT E C/L INT MKD (LAC 32)	DY 288
BASELINE (1990)	73.078	CS REF MON IN WELL 14IN DN ON NE COR ALONDRA BLVD & WOODRUFF AVE 56FT N & 60FT E/O C/L INT MKD (CLEARWATER K 2A)	DY 473
BASELINE (1990)	73.716	CSBM MON FL ON NW COR ALONDRA BLVD & WOODRUFF AVE 39FT N & 180FT W C/L INT MKD (BM 6-6A1958)	DY 474
BASELINE (1990)	74.704	L&N IN E CB 18FT E/O C/L EUCALYPTUS AVE & 80FT S/O C/L ALONDRA BLVD (15FT W/O BCR)	DY 477
BASELINE (1990)	75.143	L&T IN E CB 15FT E/O C/L LEAHY AVE & 80FT N/O C/L ALONDRA BLVD (27FT N/O BCR)	DY 478

QUAD-YEAR	ELEV	DESCRIPTION (INCLUDE QUAD AND YEAR IN DESCRIPTION)	BM NUMBER
BASELINE (1990)	75.121	L&T IN W CB 15FT W/O C/L LEAHY AVE & 80FT N/O C/L ALONDRA BLVD (14FT N/O BCR)	DY 479
BASELINE (1990)	71.731	L&T 2FT W CB RET NW COR RYON AVE & ALONDRA BLVD 38FT N & 32FT W C/L INT	DY 763
BASELINE (1990)	73.595	L&BN S CB ALONDRA BLVD 6IN E CB RET @ SE COR ALONDRA BLVD & PACIFIC AVE 70FT W PERR	DY 765
BASELINE (1990)	68.544	L & SPK 4FT E CB RET @ NE COR CLARK AVE & ALONDRA BLVD	DY 766
BASELINE (1990)	68.320	L&T C/L INT PITTS AVE & ALONDRA BLVD	DY 769
BASELINE (1990)	108.324	L&SPK IN WK 55FT N/O C/L COLE ST (TO THE WEST) & 50FT W/O C/L PARAMOUNT BLVD MKD (0-31)	DY 773
BASELINE (1990)	104.780	L&T 14FT E C/L PARAMOUNT BLVD 11FT N C/L SPRINGER ST PROD IN CONC PVMT	DY 777
BASELINE (1990)	103.878	L&T IN CONC 14FT E C/L PARAMOUNT BLVD 4FT N C/L QUILL DR PROD	DY 778
BASELINE (1990)	90.338	L & T 1FT N BCR @ NE COR PARAMOUNT BLVD & ADOREE AVE 58FT N & 38FT E C/L INT	DY 779
BASELINE (1990)	82.506	CS MON 16FT W & 5FT S INT PARAMOUNT BLVD & GARDENDALE ST	DY 783
BASELINE (1990)	77.706	L & T 10FT S BCR INTO CB RET @ NE COR PARAMOUNT BLVD & CENTURY BLVD 2FT N & 41FT E C/L INT	DY 791
BASELINE (1990)	76.227	BT SPK 1FT S BCR @ SW COR PARAMOUNT BLVD & PEARLE ST 32FT S & 38FT W C/L INT MKD (H-110)	DY 792
BASELINE (1990)	75.474	BT SPK BCR @ SW COR PARAMOUNT BLVD & HOWE ST 30FT S & 38FT W C/L INT	DY 793
BASELINE (1990)	71.487	L & T IN CB 38FT W C/L PARAMOUNT BLVD ON THIRD ST C/L PROD	DY 795
BASELINE (1990)	68.482	L&T W CB PARAMOUNT BLVD 2FT N CB RET @ NW COR MADISON ST & PARAMOUNT BLVD	DY 799
BELLFLWR (1990)	65.515	L&T E CB 5FT N BCR @ NE COR PARAMOUNT BLVD & 70TH ST 57FT N & 33FT E C/L INT	DY 803
BELLFLWR (1990)	65.202	CITY OF LONG BEACH MON IN WELL 6IN DN @ OR NR C/L INT PARAMOUNT BLVD & 70TH ST (USE W EDGE) MKD (1961)	DY 804

QUAD-YEAR	ELEV	DESCRIPTION (INCLUDE QUAD AND YEAR IN DESCRIPTION)	BM NUMBER
BASELINE (1990)	157.675	U S E D L&N W END N HDWL LA RIVER BRIDGE NO 2305 ON SLAUSON AVE 29FT N/O C/L SLAUSON AVE	DY 855
BASELINE (1990)	73.470	L&T IN S CB ALONDRA BLVD 1FT E INTO RET 68FT W C/L WOODRUFF AVE & 38FT S/O C/L ALONDRA BLVD	DY 960
BASELINE (1990)	125.683	RDBM TAG N CB 1FT E BCR @ NE COR PARAMOUNT BLVD & FLORENCE AVE 40FT N & 68FT E C/L INT	DY 1299
BASELINE (1990)	124.365	CS BR CAP CONC MON IN WELL @ C/L INT PARAMOUNT BLVD & FLORENCE AVE	DY 1386
BASELINE (1990)	127.087	L & BRAD CTR CB RET SE COR LUBEC ST & PARAMOUNT BLVD 25FT S & 52FT E C/L INT	DY 1387
BASELINE (1990)	127.305	L & BRAD CTR CB RET NE COR LUBEC ST & PARAMOUNT BLVD 27FT N & 52FT E C/L INT	DY 1388
BASELINE (1990)	130.241	L&BN W CB PARAMOUNT BLVD @ NLY P L HSE NO 9603 33FT W/O C/L PARAMOUNT BLVD	DY 1389
BASELINE (1990)	131.723	L & T CONC CB @ BCR SE COR SUVA ST & PARAMOUNT BLVD 48FT S & 38FT E C/L INT MKD (BM)	DY 1390
BASELINE (1990)	134.141	L & T IN CONC CB @ BCR @ SW COR GALLATIN RD & PARAMOUNT BLVD 53FT S & 38FT W C/L INT	DY 1392
BASELINE (1990)	138.375	SQ HD SPK W CB OF SERVICE RD OF PARAMOUNT BLVD 12FT N C/L PROD BROOKGREEN RD	DY 1394
BASELINE (1990)	139.325	L&BR E CB 1FT S/O BCR @ SE COR PARAMOUNT BLVD & VISTA DEL ROSA SERVICE ISLAND 40FT E & 50FT S C/L INT	DY 1395
BASELINE (1990)	141.886	CS MON IN WELL 8IN DN ON C/L TELEGRAPH RD 20FT WLY C/L PARAMOUNT BLVD MKD (BELL K4 1941)	DY 1397
BASELINE (1990)	143.611	RAM NAIL IN N CB TELEGRAPH RD 16FT E/O PP NO 14630Y 38FT N/O C/L TELEGRAPH RD & 110FT W/O C/L CRIDER AVE	DY 1400
BASELINE (1990)	151.584	L&T IN N CB TELEGRAPH RD 4FT E OF CB RET @ NE COR SLAUSON AVE 40 FT N & 105FT E OF C/L INT	DY 1402
BASELINE (1990)	58.454	L&T CTR CB RET SW COR ASHWORTH ST & CLARK AVE 28FT S & 34FT W/O C/L INT	DY 1438
LAKWOOD (1990)	53.769	L&T 7FT W BCR @ NW COR SOUTH ST & CLARK AVE 52FT N & 60FT W C/L INT	DY 1442
LAKWOOD (1990)	52.817	CS BR CAP MON IN WELL @ C/L INT SOUTH ST & CLARK AVE (USE NW COR)	DY 1443

QUAD-YEAR	ELEV	DESCRIPTION (INCLUDE QUAD AND YEAR IN DESCRIPTION)	BM NUMBER
BELLFLWR (1990)	65.174	L&BR @ NW COR ARTESIA AVE & BELLFLOWER BLVD 5FT W CTR CB RET 43FT N & 43FT W C/L INT	DY 1499
BASELINE (1990)	139.872	L&T N CB SLAUSON AVE @ WLY END OF CURVE 42FT N C/L SLAUSON AVE & 300FT E BOXFORD AVE (13FT W/O W END C B)	DY 1561
BASELINE (1990)	148.334	L&T N CB SLAUSON AVE 2FT E CB RET @ NE COR GARFIELD AVE 38FT N & 65FT E C/L INT	DY 1566
BASELINE (1990)	152.439	L & BN IN S CB SLAUSON AVE 3FT N PP NO 666256E 0.2MI E GARFIELD AVE 32FT E/O DR TO BLDG NO 7000	DY 1567
BASELINE (1990)	158.040	RD MON IN WELL W/COVER ON C/L SLAUSON AVE 25FT W C/L GREENWOOD AVE (USE SE EDGE)	DY 1569
BASELINE (1990)	152.028	L&T IN S CB TELEGRAPH RD 5FT6IN E/O CB RET @ SE COR SLAUSON AV 40FT S & 48FT E OF C/L INT	DY 1573
BASELINE (1990)	156.901	RD MON IN WELL C/L INT GAGE AVE & SLAUSON AVE	DY 1574
SO GATE (1990)	138.619	L&BN IN CB 1FT W/O BCR @ SW COR FLORENCE AVE & BEAR AVE 40FT S & 31FT W/O C/L INT	DY 1734
BASELINE (1990)	68.461	L&T E CB 15FT S CB RET @ SE COR FAULKNER AVE & COMPTON BLVD 15FT E & 54FT S/O C/L INT	DY 1933
BASELINE (1990)	66.948	CS MON C/L SAN JOSE AVE & APPROX N P/L OF 1ST ALLEY S COMPTON 130FT S C/L INT SAN JOSE AVE & COMPTON BLVD (USE N EDGE)	DY 1937
BASELINE (1990)	67.025	LAFC MON @ C/L INT COMPTON BLVD & SAN ANTONIO AVE MKD (L A CO FLOOD CONT)	DY 1940
BASELINE (1990)	87.971	RDBM TAG IN EAST ABUT. @ NE COR OF COMPTON BLVD BRIDGE OVER LA RIVER 1FT N/O CB FACE 24FT N C/L	DY 1941
SO GATE (1990)	69.505	L&SPK E CB GIBSON AVE 16FT S CB RET @ SE COR GIBSON AVE & SAN VINCENTE ST 42FT S & 20FT E/O C/L INT	DY 1959
SO GATE (1990)	69.309	L&SPK E CB GIBSON AVE 14FT S CB RET @ SE COR GIBSON AVE & SAN MIGUEL ST 40FT S & 20FT E/O C/L INT	DY 1960
BASELINE (1990)	83.296	L & T 6FT W BCR @ SW COR PARAMOUNT BLVD & GARDENDALE ST 35FT S & 59FT W C/L INT	DY 2041
BASELINE (1990)	66.136	L&T CTR CB RET @ SE COR ALONDRA BLVD & DOWNEY AVE 48FT S & 47FT E C/L INT	DY 2343

QUAD-YEAR	ELEV	DESCRIPTION (INCLUDE QUAD AND YEAR IN DESCRIPTION)	BM NUMBER
BASELINE (1990)	72.882	L & T 30FT E C/L ALAMEDA ST & 33FT S OF C B ON C/L ORIS ST PROD	DY 2351
BASELINE (1990)	70.627	L&T 30FT E/O C/L ALAMEDA ST ON C/L PROD MEALY ST	DY 2352
BASELINE (1990)	68.426	L & BN 28FT N C/L COMPTON BLVD & 60FT W C/L ALAMEDA ST (E BBL) 13FT E/O E RAIL SPRR	DY 2356
BASELINE (1990)	68.629	L & BN 28FT S C/L COMPTON BLVD & 70FT W C/L ALAMEDA ST (E BBL) 5FT E/O E RAIL SPRR	DY 2357
BASELINE (1990)	65.228	L&T 25FT W C/L ALAMEDA ST E BARREL ON C/L PROD LAUREL ST TO THE E	DY 2358
BASELINE (1990)	63.888	STEEL SPK WITH (X) ON TOP CTR S BCR TO DRWY OF COMPTON STREET DEPT NO 458 S ALAMEDA ST 29FT E C/L E BARREL 180FT N MYRRH ST	DY 2360
BASELINE (1990)	64.937	CS MON IN WELL 10IN DN 50FT E C/L SPRR 27FT W C/L ALAMEDA ST E BARREL & 18FT S C/L PROD MYRRH ST TO THE E MKD (BM 5-22A)	DY 2361
BASELINE (1990)	64.430	L&BN W CB ALAMEDA ST E BARREL 12FT E OF 5TH TELEGRAPH POLE N/O ALONDRA BLVD 500FT S/O MYRRH ST 25FT W/O C/L	DY 2362
BASELINE (1990)	62.467	L&T E CB ALAMEDA ST W BBL ON C/L PROD RAYMOND AVE 27FT E/O C/L ALAMEDA ST	DY 2365
BASELINE (1990)	61.865	L&T E CB ALAMEDA ST W BBL 27FT E/O C/L ON C/L PROD TICHENOR ST	DY 2367
BASELINE (1990)	61.615	L&T E CB ALAMEDA ST W BBL C/L PROD CALDWELL ST 26FT E/O C/L ALAMEDA ST	DY 2368
BASELINE (1990)	61.236	L&T E CB ALAMEDA ST W BBL 27FT E/O C/L ON C/L PROD JOHNSON ST	DY 2369
BASELINE (1990)	61.012	L&T E CB ALAMEDA ST W BBL 27FT E/O C/L ON C/L PROD BENNET ST	DY 2370
BASELINE (1990)	59.695	STD DISC TOP OF CONC POST 3FT N OF MILE POST NO 495 SPRR & 38FT E C/L SPRR 2FT BELOW TOP OF RAIL & 0.15MI S/O GREENLEAF BLVD 113FT E/O C/L ALAMEDA ST MKD (Q 768 1945)	DY 2374
BASELINE (1990)	62.819	L&BN E CB ALAMEDA ST @ ANGLE POINT OF WINGWALL @ NE COR BRIDGE NO 774 OVER COMPTON CREEK 22FT E C/L & 174FT N C/L CREEK & 400FT S ARTESIA BLVD	DY 2377

QUAD-YEAR	ELEV	DESCRIPTION (INCLUDE QUAD AND YEAR IN DESCRIPTION)	BM NUMBER
BASELINE (1990)	58.078	FC BR CAP @ S END OF WINGWALL @ NE COR SPRR BRIDGE 90FT E C/L ALAMEDA ST & 450FT S C/L ARTESIA BLVD MKD (RBM 44-33)	DY 2378
BASELINE (1990)	62.856	FC BR CAP 5FT S ANGLE POINT WINGWALL SW COR BRIDGE NO 774 ON ALAMEDA ST OVER COMPTON CREEK 28FT W C/L & 600FT S ARTESIA BLVD MKD (BM 44-33)	DY 2379
BASELINE (1990)	51.339	LAFC BR CAP E CB ALAMEDA ST 22FT E/O C/L OPP OLD ENT DOMINGUEZ SEMINARY MKD (RBM 44-32)	DY 2380
BASELINE (1990)	52.744	FC BR CAP SE COR 8X8FT CONC VALVE BOX 58FT E C/L SPRR & 125FT E/O C/L ALAMEDA ST OPP OLD ENT TO DOMINQUEZ SEMINARY MKD (BM 44-32)	DY 2381
BASELINE (1990)	50.452	L&BN W CB ALAMEDA ST 22FT W C/L OPP NE COR 8FT CHAIN LINK FENCE AROUND SO CAL EDISON SUB-STATION PROPERTY 650FT N DOMINGUEZ JCT	DY 2382
BASELINE (1990)	46.631	L&BN W CB ALAMEDA ST W BBL 22FT W/O C/L & 530FT S/O C/L LONG BEACH LINE PERR 37FT N/O TP NO 16767R	DY 2384
BASELINE (1990)	45.837	L&BN E CB ALAMEDA ST W BBL 22FT E/O C/L & 1285FT S/O C/L LONG BEACH LINE PERR 0.25MI N/O LAUREL PARK RD	DY 2385
BASELINE (1990)	42.927	STD USGS DISC IN CONC POST 3IN UP 30FT E C/L SPRR 55FT W C/L ALAMEDA ST E BARREL 0.5MI NLY DEL AMO BLVD 4FT N TP#LU MKD (P 768 1945)	DY 2388
BASELINE (1990)	41.375	L&BN E CB ALAMEDA ST W BARREL 22FT E/O C/L 0.1MI N/O VISTA INDUSTRIA OPP BLDG NO 19722	DY 2389
BASELINE (1990)	40.914	CUT SPK E CB ALAMEDA ST W BARREL 22FT E C/L & 0.25MI N/O DEL AMO BLVD 105FT S/O C/L VISTA INDUSTRIA	DY 2390
BASELINE (1990)	32.683	L&SPK E CB ALAMEDA ST W BARREL 22FT E C/L 275FT N/O C/L EL PRESIDIO ST 1400FT S DEL AMO BLVD	DY 2393
BASELINE (1990)	32.116	L&BN E CB ALAMEDA ST W BARREL 22FT E C/L 23FT PP NO 577803R 900FT N OF DOMINGUEZ ST	DY 2394
BASELINE (1990)	31.685	L & T NR MCR @ SE COR ALAMEDA ST & DOMINGUEZ ST 22FT S & 45FT E/O C/L INT E BAR	DY 2414
BASELINE (1990)	31.375	L & T IN S CB 20FT S C/L DOMINGUEZ ST 1FT W/O DRWY TO HSE NO 2638 DOMINGUEZ ST 0.10MI W/O PROSPECT AVE	DY 2415

QUAD-YEAR	ELEV	DESCRIPTION (INCLUDE QUAD AND YEAR IN DESCRIPTION)	BM NUMBER
BASELINE (1990)	32.022	L&T S CB DOMINGUEZ ST 25FT W DRWY HSE NO 2738 DOMINGUEZ ST (FRONT FIRE PLUG) 0.15MI W/O SANTA FE AVE	DY 2416
BASELINE (1990)	32.779	L & S IN W CB 3FT S BCR @ SW COR DOMINGUEZ ST & SANTA FE AVE 38FT S & 40FT W C/L INT	DY 2417
BASELINE (1990)	67.343	LACS MON 30FT N & 70FT E C/L INT ALONDRA BLVD & CLARK AVE MKD(BM 6-8 1951)	DY 2596
BASELINE (1990)	73.236	L&T N CB 4FT W CB RET @ NW COR ALONDRA BLVD & BLAINE AVE	DY 2597
BASELINE (1990)	73.370	L&T IN N CB 3FT E CB RET @ NE COR ALONDRA BLVD & BLAINE AVE	DY 2598
BASELINE (1990)	74.081	L&BN S CB 1FT W CB RET @ SW COR ALONDRA BLVD & BELLFLOWER BLVD 38FT S & 46FT W C/L INT	DY 2600
BASELINE (1990)	72.970	L&T N CB 1FT E CB RET @ NE COR ALONDRA BLVD SERVICE RD & DUMONT AVE	DY 2616
BASELINE (1990)	73.512	L&T N CB 1FT E OF CB RET @ NE COR ALONDRA BLVD SERVICE RD & LEIBACHER AVE	DY 2617
BASELINE (1990)	44.077	L & BN 1FT E BCR @ NE COR CARSON ST & 1ST ALLEY W WOODRUFF AVE 40FT N & 400FT W C/L INT	DY 2678
BASELINE (1990)	44.579	L & T 2FT W BCR @ NW COR WOODRUFF AVE & CARSON ST 42FT N & 79FT W C/L INT MKD (BM)	DY 2679
BASELINE (1990)	39.799	RDBM TAG S CB 1FT W BCR @ SW COR BELLFLOWER BLVD & CARSON ST 38FT S & 70FT W C/L INT	DY 2704
BASELINE (1990)	39.579	L&BRAD IN CTR CB RET @ NE COR BELLFLOWER BLVD & CARSON ST 50FT N & 50FT E/O C/L INT	DY 2706
BASELINE (1990)	22.531	L&N S CB SPRING ST (N SERVICE RD) C/L LOMINA AVE PROD 13FT S/O C/L N SERVICE RD SPRING ST	DY 2941
BASELINE (1990)	21.798	L & N IN CTR ISL S END PARKWAY SAN ANSELINA AVE 28FT N C/L SPRING ST SERVICE RD	DY 2942
BASELINE (1990)	22.656	L & NAIL IN SO CB SERVICE RD SPRING ST ON C/L PROD CHATWIN AVE 54FT N/O C/L SPRING ST	DY 2943
BASELINE (1990)	22.256	L & BN IN N CB 1FT E BCR 54FT N & 81FT E C/L INT SPRING ST & BELLFLOWER BLVD	DY 2944
BASELINE (1990)	21.344	LACS MON IN WELL 14IN DN W/ CITY OF L B COVER @ C/L INT SPRING ST & BELLFLOWER BLVD (N EDGE)	DY 2946

QUAD-YEAR	ELEV	DESCRIPTION (INCLUDE QUAD AND YEAR IN DESCRIPTION)	BM NUMBER
BASELINE (1990)	104.256	L & T 18FT S C/L SPRINGER ST & 70FT W C/L PARAMOUNT BLVD 8FT W BCR @ SW COR IN CB	DY 3168
BASELINE (1990)	110.224	L & B 1FT W BCR @ SW COR DE PALMA ST & PARAMOUNT BLVD 18FT S & 74FT W C/L INT	DY 3173
BASELINE (1990)	111.240	L & BRAD 1FT W BCR @ NW COR CLETA ST & PARAMOUNT BLVD 18FT N & 75FT W C/L INT	DY 3174
BASELINE (1990)	112.061	L&T 2FT W/O BCR @ SW COR BROOKMILL RD & PARA- MOUNT BLVD 18FT S & 77FT W/O C/L INT	DY 3175
BASELINE (1990)	115.722	LACS MON IN WELL @ C/L INT 2ND ST & PARAMOUNT BLVD (USE S EDGE)	DY 3182
BASELINE (1990)	123.851	L & T 2FT S BCR @ SW COR PARAMOUNT BLVD & FARM ST 55FT S & 38FT W C/L INT	DY 3183
BELLFLWR (1990)	52.205	L&BN E SIDE CONC BASE S PEDESTRIAN GATE POST OF WIRE FENCE 50FT W/O C/L PARAMOUNT BLVD 6FT NE COR EDISON CO TRANSFORMER ON THE RICHFIELD OIL CO PROPERTY 5900 BLOCK OF PARAMOUNT BLVD 0.4MI S/O C/L 63RD ST	DY 3634
BASELINE (1990)	53.881	L & BN 1FT W BCR @ NW COR LAKEWOOD BL & SOUTH ST 40FT N & 80FT W C/L INT	DY 3639
BASELINE (1990)	56.529	L&BN S CB ALLINGTON ST 75FT W/O C/L 28FT S/O C/L WOODRUFF AVE 1FT W/O BCR	DY 3676
BASELINE (1990)	56.768	L&BR W CB 3FT N BCR @ NW COR ALLINGTON ST & CANEHILL AVE 75FT N & 18FT W C/L INT	DY 3679
BASELINE (1990)	57.321	RDBM TAG S CB 1FT E BCR @ SE COR ALLINGTON ST & CANEHILL AVE 30FT S & 60FT E C/L INT	DY 3680
BASELINE (1990)	55.792	CS MON C/L INT PALO VERDE AVE & ALLINGTON ST	DY 3681
BASELINE (1990)	49.625	CSBM MON IN WELL 88FT S/O C/L SOUTH ST 9FT E/O C/L PALO VERDE AVE MKD (BM 9-9 1951)	DY 3686
LAKWOOD (1990)	51.359	L&BN W CB 15FT N BCR @ NW COR SOUTH ST & SNOWDEN AVE 120FT N & 18FT W C/L INT	DY 3690
LAKWOOD (1990)	54.082	L&BN 1FT W OF BCR @ SW COR OCANA AVE & SERVICE RD SOUTH ST 80FT S & 48FT W C/L INT	DY 3696
LAKWOOD (1990)	55.199	L&BN 1FT W BCR @ SW COR COLDBROOK AVE & SERVICE RD SOUTH ST 80FT S & 40FT W C/L INT	DY 3697

QUAD-YEAR	ELEV	DESCRIPTION (INCLUDE QUAD AND YEAR IN DESCRIPTION)	BM NUMBER
LAKWOOD (1990)	55.058	L & BN 42FT S C/L SOUTH ST & 15FT E C/L PROD ADENMOOR AVE	DY 3698
BASELINE (1990)	58.008	L&T 1FT S CB RET @ SW COR ASHWORTH ST & WOODRUFF AVE 45FT S & 40FT W/O C/L INT	DY 3702
BASELINE (1990)	79.774	BR CAP @ S END W CONC BANNISTER @ MAIN ENT TO THE (FRANCIS WILLARD SCHOOL) 114FT E C/L ALAMEDA ST E BBL & 98FT S C/L EL SEGUNDO BLVD MKD (W 615 1941)	DY 3741
BASELINE (1990)	75.467	CS MON IN WELL 27FT E C/L ALAMEDA ST W BBL & 3FT S C/L EL SEGUNDO BLVD	DY 3742
BASELINE (1990)	178.696	DISC IN S WALL 2FT E SW COR BLDG 3FT UP @ NE COR RANDOLPH ST & E BBL ALAMEDA ST 8FT N/O N CB & 8FT E/O E CB	DY 3806
BASELINE (1990)	154.063	L&BN 1FT W BCR @ NW COR W BBL ALAMEDA ST & FLORANCE AVE 30FT N & 60 FT W/O C/L INT	DY 3823
BASELINE (1990)	157.163	CS MON SET VERTICAL IN COR BLDG 2FT UP 3FT N COR 53FT N/O C/L FLORENCE AVE 86FT E/O E CB ALAMEDA ST (E BARREL)	DY 3825
BASELINE (1990)	178.957	CS MON C/L SLAUSON AVE 14FT W OF W RAIL SPRR 20FT E C/L ALAMEDA ST MKD (WATTS H-2A 1939)	DY 3836
SO GATE (1990)	155.408	L & BN 2FT W BCR @ SW COR SANTA FE AVE & FLORENCE AVE 35FT S & 48FT W/O C/L INT	DY 4131
SO GATE (1990)	155.273	L&T IN CB 35FT S/O C/L FLORENCE AVE & ON C/L PROD RUGBY AVE	DY 4133
SO GATE (1990)	151.619	L&BN IN CB 30FT S/O C/L FLORENCE AVE 10FT W/O C/L PROD RUGBY AVE	DY 4136
SO GATE (1990)	150.900	L & BN 2FT N BCR @ SW COR MOUNTAIN VIEW AVE & FLORENCE AVE 58FT S & 15FT W C/L INT	DY 4137
BASELINE (1990)	50.860	RDBM TAG 1.5FT E BCR @ NE COR PARAMOUNT BLVD & SOUTH ST 40FT N & 75FT E C/L INT	DY 4567
BASELINE (1990)	67.366	L & SPK 3FT E BCR @ SE COR COMPTON BLVD & BRADFIELD AVE 40FT S & 42FT E C/L INT	DY 4571
BASELINE (1990)	65.889	CITY OF COMPTON MON IN WELL 18IN DP C/L COMPTON BLVD & C/L PROD BRADFIELD AVE N	DY 4572
BASELINE (1990)	66.108	CITY OF COMPTON MON IN WELL 12IN DP @ C/L INT COMPTON BLVD & LONG BEACH BLVD 5FT N OF MON TO THE S	DY 4574

QUAD-YEAR	ELEV	DESCRIPTION (INCLUDE QUAD AND YEAR IN DESCRIPTION)	BM NUMBER
BASELINE (1990)	164.867	L&T S CB SLAUSON AVE 192FT W & 21FT S C/L INT DOWNEY RD & SLAUSON AVE FRONT OF POWER POLE	DY 4665
BASELINE (1990)	162.162	CS MON IN WELL 8IN DN 2FT S & 4FT W/O C/L INT SLAUSON AVE & EVERETT AVE MKD (LA CO SUR CONTROL SYS TRAVERSE STA WATTS L-2B RE4233)	DY 4666
BASELINE (1990)	57.552	CS MON IN WELL 8IN DN ON SW COR CLARK AVE & ASHWORTH ST 38FT S & 30FT W C/L INT MKD (BM 32-3)	DY 4961
BASELINE (1990)	46.623	RDBM TAG W CB 6FT N BCR OF ISLAND @ NW COR PARAMOUNT BLVD & HARDWICK ST 45FT N & 40FT W C/L INT	DY 4962
BASELINE (1990)	46.779	RDBM TAG W CB 2FT S BCR OF ISLAND @ SW COR PARAMOUNT BLVD & HARDWICK ST 37FT S & 43FT W C/L INT	DY 4963
BASELINE (1990)	43.344	CS MON IN WELL 10IN DN ON SW COR DEL AMO BLVD & & PALO VERDE AVE 23FT W & 85FT S C/L INT MKD (BM 9-10)	DY 4993
BASELINE (1990)	44.401	L&T E CB 17FT S BCR @ SE COR DEL AMO BLVD & PALO VERDE AVE 90FT S & 30FT E C/L INT MKD (BM)	DY 4994
BASELINE (1990)	55.029	USC&GS BR CAP E END CONC BRIDGE 1000FT W LAKEWOOD BLVD NR CTR GOLF COURSE 50FT N C/L CARSON ST MKD (C780 1946)	DY 5000
BASELINE (1990)	55.066	SQ HD BT E END HDWL CONC BRIDGE 1000FT W LAKEWOOD BLVD NR CTR GOLF COURSE 50FT S C/L CARSON ST MKD (U)	DY 5001
BELLFLWR (1990)	67.093	L&BRAD W CB 1FT N BCR @ NW COR CARSON ST & DEEBOYER AVE 90FT N & 18FT W C/L INT MKD (BM)	DY 5006
BELLFLWR (1990)	62.135	RDBM TAG N CB 1FT E BCR @ NE COR CHERRY AVE & BIXBY AVE 30FT N & 88FT E SPLIT OF CBS	DY 5008
BELLFLWR (1990)	62.076	RDBM TAG S CB 3FT E BCR @ SE COR CHERRY AVE & BIXBY AVE 30FT S & 91FT E SPLIT OF CBS	DY 5009
BASELINE (1990)	47.606	L&T S CB 3FT W BCR @ SW COR PALO VERDE AVE & CANDLEWOOD ST 68FT W & 38FT S C/L INT MKD (BM)	DY 5017
BASELINE (1990)	46.454	L&BR E CB 1FT N BCR @ NE COR PALO VERDE AVE & EBERLE ST 50FT N & 30FT E C/L INT MKD (BM)	DY 5019
BASELINE (1990)	38.608	CS MON IN WELL 10IN DN @ OR NR C/L INT PALO VERDE AVE & ARBOR RD (USE S EDGE)	DY 5020

QUAD-YEAR	ELEV	DESCRIPTION (INCLUDE QUAD AND YEAR IN DESCRIPTION)	BM NUMBER
BASELINE (1990)	41.210	L&BN N CB 73FT W BCR @ NW COR PALO VERDE AVE & ARBOR RD 138FT W & 18FT N C/L INT (ALONG FC R/W) CB MKD (LC 28)	DY 5021
BASELINE (1990)	36.064	CS MON IN WELL 12IN DN @ OR NR C/L INT PALO VERDE AVE & CENTRALIA ST (USE W EDGE)	DY 5022
BASELINE (1990)	35.034	CS MON IN WELL 12IN DN @ OR NR C/L INT PALO VERDE AVE & HARVEY WAY	DY 5024
BASELINE (1990)	36.154	L&BN E CB 1FT S BCR @ SE COR PALO VERDE AVE & HARVEY WAY 30FT E & 57FT S C/L INT	DY 5025
BASELINE (1990)	36.432	RDBM TAG W CB 6FT N BCR @ NW COR PALO VERDE AVE & CARSON ST 82FT N & 30FT W C/L INT	DY 5026
BASELINE (1990)	36.377	RDBM TAG E CB 6FT N BCR @ NE COR PALO VERDE AVE & CARSON ST 82FT N & 30FT E C/L INT	DY 5027
BASELINE (1990)	44.808	CS MON FLUSH W/WLK 2FT NW CTR CB RET @ NW COR CARSON ST & WOODRUFF AVE 57FT N & 48FT W C/L INT MKD (K9 RM NO 3)	DY 5029
BASELINE (1990)	42.041	RDBM TAG SO CB N SER RD 54FT N & 615FT W/O INT CARSON ST & CARFAX AVE (FRONT OF HSE NO 6133) ENT TO WATER PUMP HSE	DY 5030
BASELINE (1990)	41.573	RDBM TAG NO CB N SER RD 82FT N & 615FT W/O INT CARSON ST & CARFAX AVE (FRONT OF HSE NO 6133) ENT TO WATER PUMP HSE	DY 5031
BASELINE (1990)	56.053	L&T E CB 1FT S BCR @ SE COR WOODRUFF AVE & ALLINGTON ST 76FT S & 40FT E C/L INT MKD (BM)	DY 5045
BASELINE (1990)	62.497	RDBM TAG 2FT S BCR @ SW COR PARAMOUNT BLVD & WARWOOD RD (W SERVICE RD) 47FT S & 76FT W/O C/L INT	DY 5052
BASELINE (1990)	62.478	RDBM TAG W CB 2FT N BCR @ NW COR PARAMOUNT BLVD & WARWOOD RD (W SERVICE RD) 48FT N & 76FT W/O C/L INT	DY 5053
BASELINE (1990)	60.516	RDBM TAG W CB 2FT S BCR @ SW COR PARAMOUNT BLVD & GREENTOP ST (W SERVICE RD) 46FT S & 76FT W/O C/L INT	DY 5054
BASELINE (1990)	60.238	RDBM TAG W CB 2FT N BCR @ NW COR PARAMOUNT BLVD & GREENTOP ST (W SERVICE RD) 46FT N & 76FT W/O C/L INT	DY 5055

QUAD-YEAR	ELEV	DESCRIPTION (INCLUDE QUAD AND YEAR IN DESCRIPTION)	BM NUMBER
BASELINE (1990)	54.371	RDBM TAG W CB 2FT N BCR @ NW COR PARAMOUNT BLVD & CENTRALIA ST (W SERVICE RD) 47FT N & 76FT W/O C/L INT	DY 5057
BASELINE (1990)	119.671	CS MON CONC FOUNDATION SW LEG TRANSMISSION LINE TOWER NO 26503 33FT E C/L E BBL ALAMEDA ST & 118 FT N C/L SOUTHERN AVE MKD (LC 769 1945)	DY 5771
BASELINE (1990)	113.584	RD MON CONC BASE FORMER RR SIGNL 68FT E C/L W BB ALAMEDA ST & 30FT N C/L TWEEDY BLVD MKD (BM 30)	DY 5773
BASELINE (1990)	102.863	CS MON IN CONC POST 2IN UP 1FT E OF E CB ALAMEDA ST W BBL & 199 N C/L CENTURY BLVD MKD (RE 2177-6) USE SE EDGE	DY 5775
BASELINE (1990)	101.964	CS MON IN CONC POST FL 3FT W OF W CB ALAMEDA ST (E BARREL) 199FT N C/L CENTURY BLVD MKD (A769) USE S EDGE	DY 5776
BASELINE (1990)	91.299	LACE HEX MON IN WELL 32FT E C/L ALAMEDA ST W BBL & 34FT S C/L IMPERIAL HWY	DY 5779
BASELINE (1990)	91.179	L&BN IN CB 10FT S BCR @ SE COR 25FT E/O C/L ALAMEDA ST (W BARREL) & 70FT S/O C/L IMPERIAL HWY MKD (BM)	DY 5780
BASELINE (1990)	63.853	R D MON NR N END CONC HDWL CULV 27FT E C/L MAIN TRACK SPRR 45FT W C/L ALAMEDA ST E BARREL 17FT S C/L PROD RAYMOND ST MKD (BM 19)	DY 5783
BASELINE (1990)	63.694	USC&GS MON NR S END CULV HDWL 10FT W C/L SPRR & 70FT E C/L ALAMEDA ST W BARREL 90FT N C/L PROD CALDWELL ST MKD (T 615 1941)	DY 5784
BASELINE (1990)	54.808	MWD MON 3FT E OF E CB ALAMEDA ST 26FT E C/L & 0.5MI S/O ARTESIA BLVD IN S END CONC CULV OPP GATE NO 18011 MKD (56Z 1933)	DY 5785
BASELINE (1990)	49.212	USC&GS MON NEAR N END SFRR CULV HDWL NO 496.25 18FT W/O C/L SFRR TRACKS 67FT E/O C/L ALAMEDA ST & 450FT S/O C/L INT ALAMEDA ST & PERR MKD (F 52 1926)	DY 5787
BELLFLWR (1990)	64.662	L&T E CB 2FT S BCR @ SE COR ATLANTIC AVE & MYRRH ST 27FT S & 36FT E C/L INT	DY 6120
BELLFLWR (1990)	64.653	L&T W CB 1FT S BCR @ SW COR ATLANTIC AVE & MYRRH ST 26FT S & 36FT W C/L INT	DY 6121
BASELINE (1990)	31.546	CS MON 10IN DN 14FT S & 72FT W C/L INT DOMINGUEZ ST & SANTA FE AVE MKD (BM 8-57 RE 63)	DY 6146

