

COUNTY OF LOS ANGELES

ROAD DEPARTMENT



LANCASTER QUAD

BENCH MARKS

1962

PREFACE

The Road Department level net is composed of more than 1,000 miles of levels supporting in excess of 10,000 bench marks. In 1964-65, a major readjustment of the net was undertaken. To emphasize the complete break with previous elevations, the SY, SG & SL series bench marks have been re-labeled BY, BG & BL, respectively.

To facilitate the adjustment, indexing, and distribution of adjusted values of the net, the County territory was divided into 31 quads or areas. For identification purposes each quad was given a name, viz., "Rosemead," "La Mirada," "Santa Fe," etc. When bench marks and elevations in the Road Department net are used, the name of the quad in which the bench mark is located and the date of the adjustment of the elevation must be included in the bench mark description, e.g.,

BG 1887 --L+BN IN CONC HDWL OF DRAIN PIPE UNDER DR 218 FT
NE +18 FT SE C/L INT SAN JOSE HILLS RD +CAMERON AVE MKD (BM)
(COVINA --1965) ELEV. 696.238

It is expected that this general adjustment will, for the most part, remain sound for the next 8 to 12 years. As new circuits are completed, however, re-adjustment of individual quads may become advisable. It is expected that these subsequent adjustments will be in the nature of a few hundredths of a foot. When a quad is re-adjusted, new elevation lists will be published and the date of the re-adjustment will replace the "1965" at the end of the bench mark description. Two bench marks in the same quad with different adjustment dates will not normally join each other. Since all adjustments taper out to nothing at the periphery of the quad, any bench mark in one quad will join any bench mark in another quad regardless of their respective adjustment dates.

The basic accuracy of the net is reflected by an indicated field probable error of plus or minus 0.012 foot per mile of leveling as determined from 298 conditions of closure. However, many years experience in vertical control in the greater Los Angeles basin and Antelope Valley indicate that because of varying degrees of subsidence and heaving, the true datum is recovered only by obtaining substantial agreement of a number of bench marks.

The users of this net are invited to assist in its maintenance by notifying this Department of cases of obliteration, apparent mistakes in descriptions or elevations, and proven disturbance of bench marks.

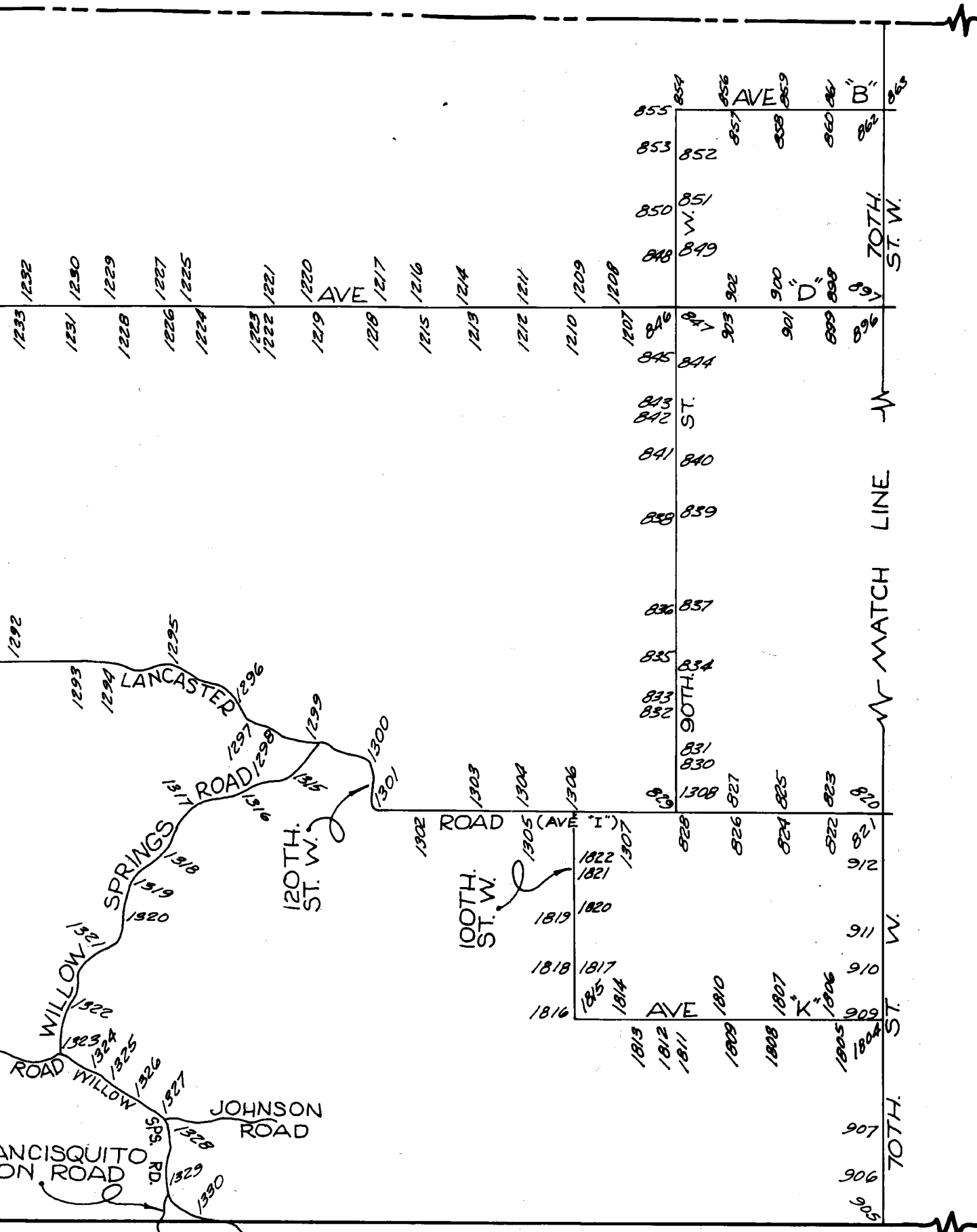
DATUM: U. S. Coast and Geodetic Survey Sea Level Datum
of 1929, through the medium of the Los Angeles
County Engineer Precise Level Net, 1963 Adjust-
ment.

ABBREVIATIONS USED IN BENCH MARK LISTINGS

ABUT - - - - -	Abutment	EC - - - - -	End of Curve
ALG - - - - -	Along	ENT - - - - -	Entrance
ANG PT - - - - -	Angle Point	FL - - - - -	Floor
B/W - - - - -	Back of Walk	FTG - - - - -	Footing
BCR - - - - -	Beginning of Curb Return	F/W - - - - -	Front of Walk
BC - - - - -	Beginning of Curve	GAR - - - - -	Garage
BLDG - - - - -	Building	HDWL - - - - -	Headwall
BM - - - - -	Bench Mark	HSE - - - - -	House
BT SPK - - - - -	Boat or Bolt Spike	INT - - - - -	Intersection
BR CAP - - - - -	Brass or Bronze Cap	IP - - - - -	Iron Pipe
C B - - - - -	Catch Basin	LT - - - - -	Left
CTR - - - - -	Center	LACE - - - - -	L. A. City Engineer
C/L - - - - -	Center Line	LACS - - - - -	L. A. County Engineer
C/L INT - - - - -	Center Line Intersection	L AFC - - - - -	L. A. Co. Flood Control
C/L PROD - - - - -	Center Line Produced	L+BN - - - - -	Lead and Bench Nail
CONC - - - - -	Concrete	L+BR - - - - -	Lead and Brad
COR - - - - -	Corner	L+N - - - - -	Lead and Nail
COE - - - - -	Corps of Engineers	L+RDEM TAG - - - - -	Lead and Road Dept. Bench Mark Tag
CULV - - - - -	Culvert	L+SPK - - - - -	Lead and Spike
CB - - - - -	Curb	L+T - - - - -	Lead and Tack
CS MON - - - - -	County Engineer Monument	MCR - - - - -	Middle of Curb Return
CS BR CAP - - - - -	County Engineer Brass Cap	MKD - - - - -	Marked
CT SPK - - - - -	Cut Spike	MC - - - - -	Middle of Curve
DR - - - - -	Drive or Driveway	MON - - - - -	Monument
E/O - - - - -	East of	N/O - - - - -	North of
ECR - - - - -	End of Curb Return	NR - - - - -	Near

ABBREVIATIONS USED IN BENCH MARK LISTINGS . . . CONTINUED

OPP - - - - - Opposite
PI - - - - - Point of Intersection
PK+W - - - - - PK Nail and Washer
P/L - - - - - Property Line
POST - - - - - Point on Semi-Tangent
PP - - - - - Power Pole
PVMT - - - - - Pavement
PROD - - - - - Produced
RD - - - - - Road
RDEM - - - - - Road Dept. Bench Mark
RR - - - - - Railroad
RT - - - - - Right
R/W - - - - - Right of Way
SDMH - - - - - Storm Drain Manhole
SMH - - - - - Sewer Manhole
SPK - - - - - Spike
ST+W - - - - - Spike Tin and Washer
S/O - - - - - South of
TP - - - - - Telephone Pole
USC+GS - - - - - U. S. Coast and Geodetic Survey
USGS - - - - - U. S. Geological Survey
WK - - - - - Walk
W/O - - - - - West of



ALMDALE QUAD

W MATCH LINE W

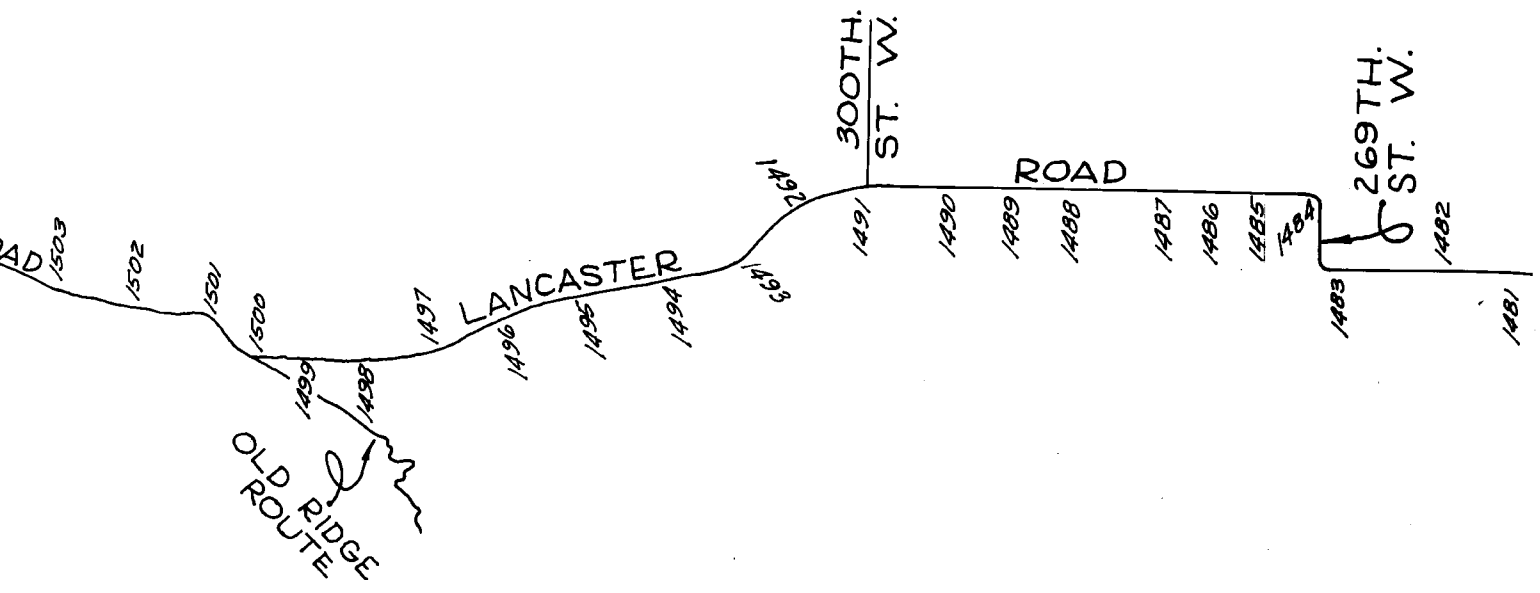
855 854
853 852
850 851
848 849
846 847
845 844
843 842
841 840
839 839
836 837
835 834
833 834
832 831
831 830
829 827
828 825
826 823
821 820

846 847
845 844
843 842
841 840
839 839
836 837
835 834
833 834
832 831
831 830
829 827
828 825
826 823
821 820

1813 1812 1811 1810 1809 1808 1807 1806 1805 1804
1819 1818 1817 1816 1815 1814 1813 1812 1811 1810 1809 1808 1807 1806 1805 1804

855 854
853 852
850 851
848 849
846 847
845 844
843 842
841 840
839 839
836 837
835 834
833 834
832 831
831 830
829 827
828 825
826 823
821 820

LOS KERN ANGELES



LANCASTER QU
(WEST)

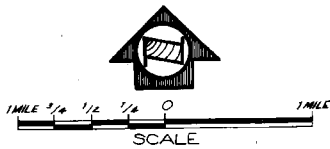
DUNTY

CASTER QUAD (EAST)

COUNTY

BERNARDINO

SAN



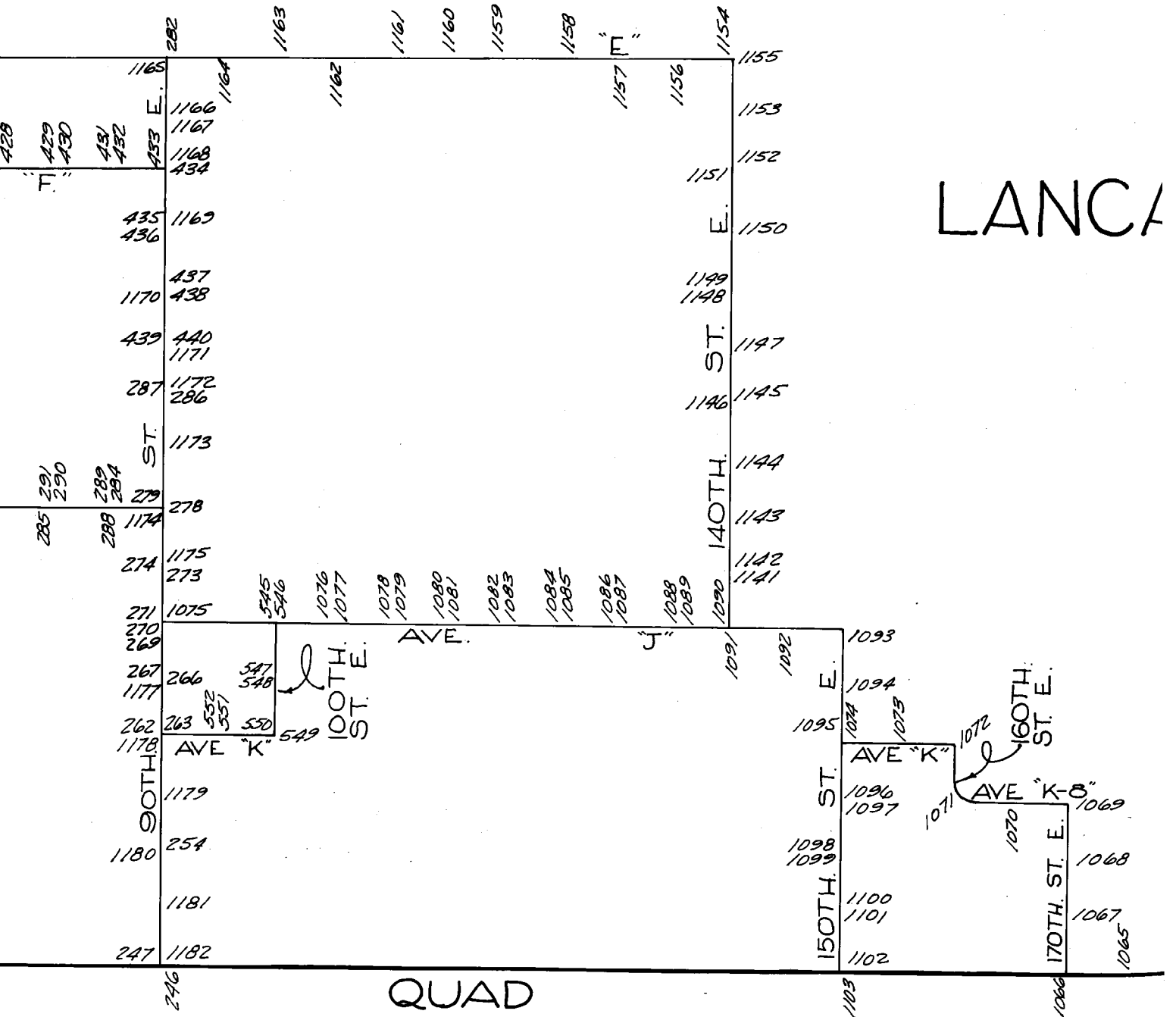
1069
1068
1067
1065

1064

COUNTY

ANGELES

COUN

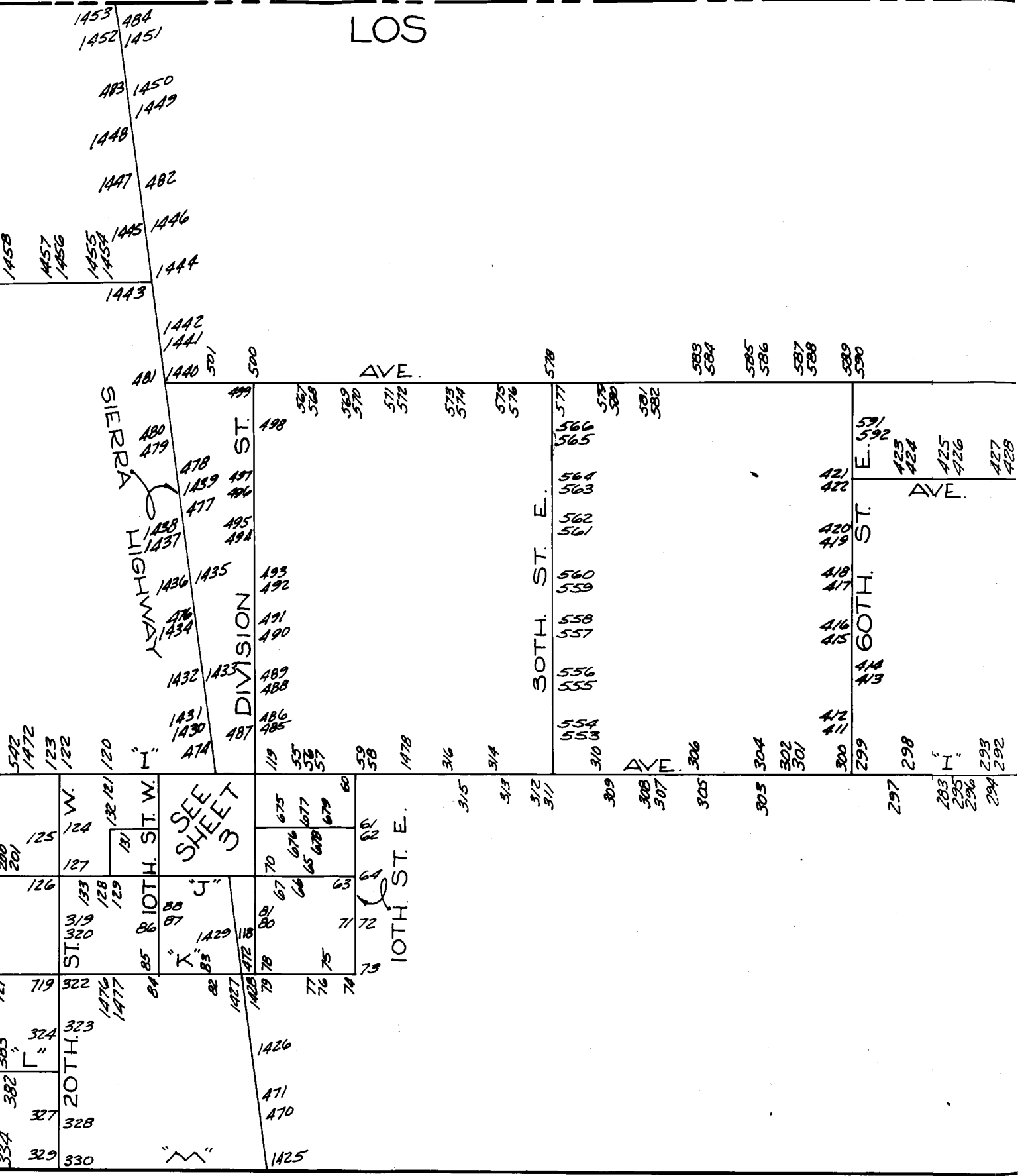


LANCA

QUAD

KERN

LOS



PALMDALE

SEE SHEET 3

"J"

"K"

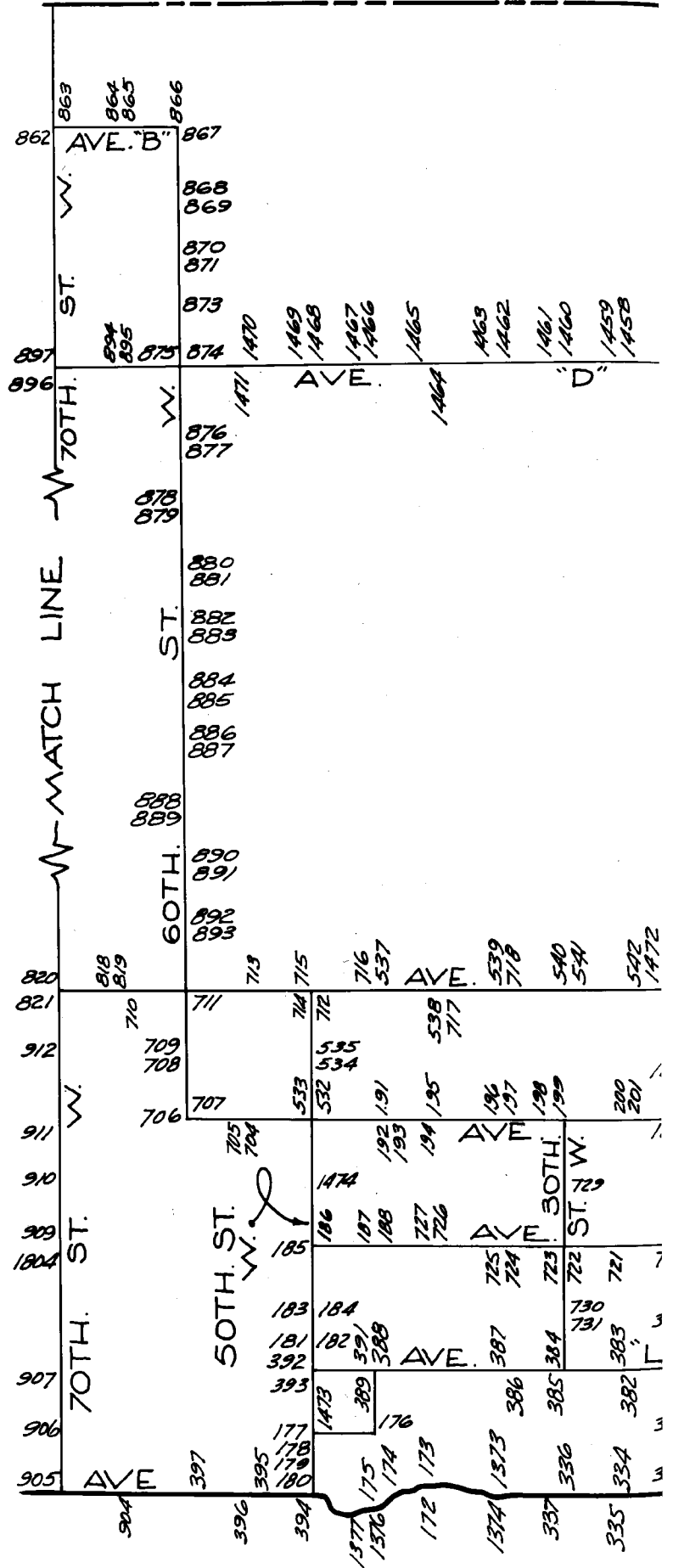
"L"

"M"

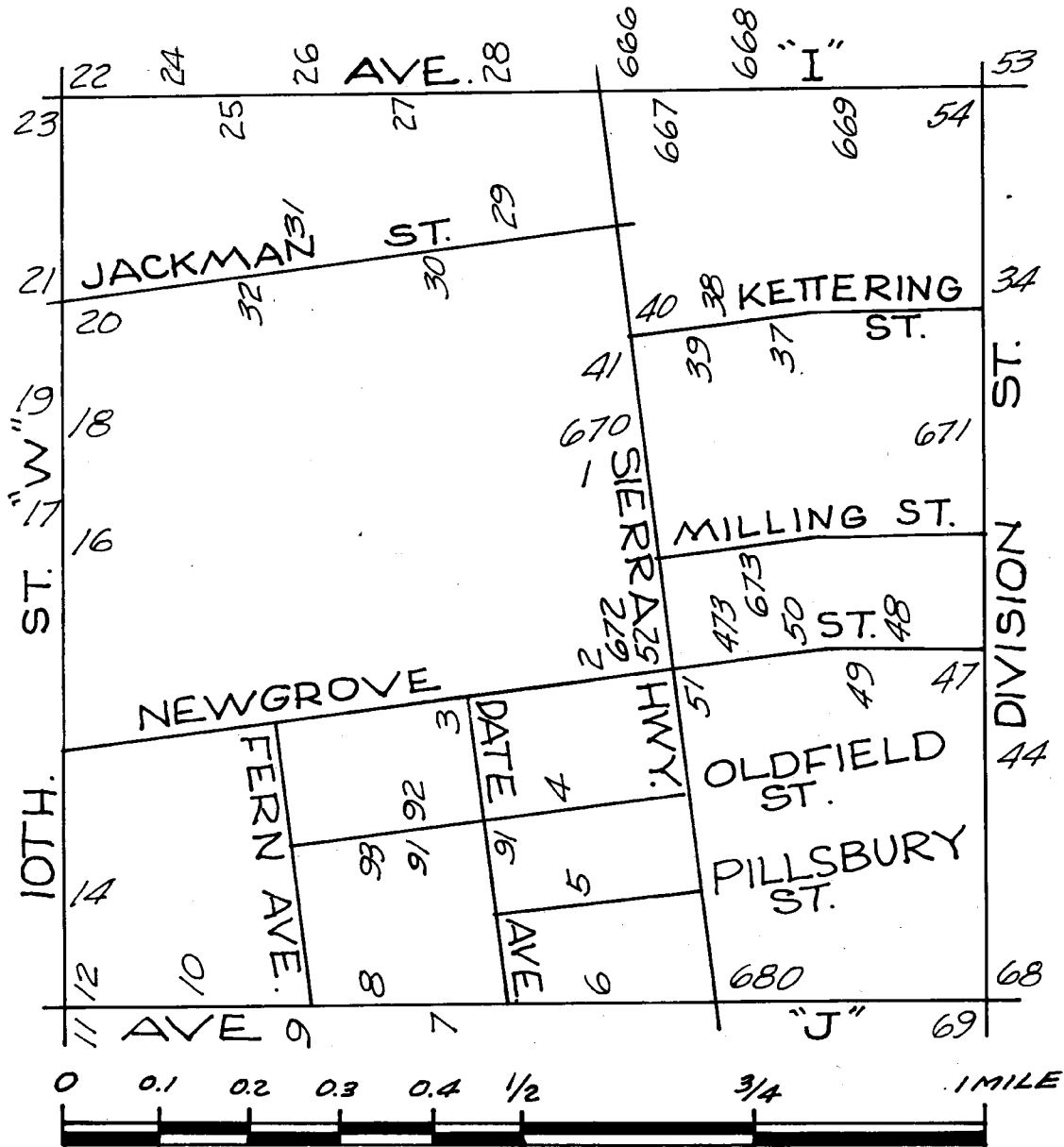
469

330

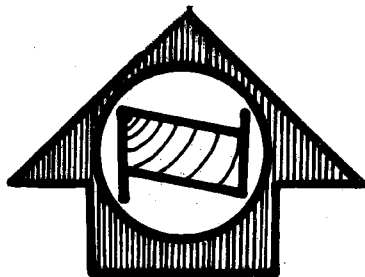
LANCASTER QUAD (WEST)



LANCASTER QUAD (SHEET 3)



SCALE



APR 1966

LOS ANGELES COUNTY ROAD DEPARTMENT
SURVEY SECTION FIELD ENGINEERING DIVISION

PAGE 1

QUAD-YEAR	ELEV	DESCRIPTION (INCLUDE QUAD AND YEAR IN DESCRIPTION)	BM NUMBER
LANCASTR (1962)	2353.772	4IN BR CAP IN CONC NW COR BLDG NO 512 LANCASTER BLVD @ FIRST ALLEY W OF SIERRA HWY MKD (RESET 1961)	SL 1B
LANCASTR (1962)	2361.107	L+T MCR @ SE COR BEECH AVE + NEWGROVE ST	SL 2
LANCASTR (1962)	2362.738	L+T E CB CEDAR AVE + 35FT S C/L NEWGROVE ST	SL 3
LANCASTR (1962)	2366.150	L+BN MCR NW COR CEDAR AVE + OLDFIELD ST	SL 4
LANCASTR (1962)	2369.633	L+T MCR NW COR CEDAR AVE + PILLSBURY ST	SL 5
LANCASTR (1962)	2372.843	L+T MCR NE COR AVE J + CEDAR AVE	SL 6
LANCASTR (1962)	2369.719	L+BN IN CB 1FT N BCR 66 FT N + 18FT W C/L INT AVE J + ELM AVE	SL 7A
LANCASTR (1962)	2368.287	L+BN MCR SE COR AVE J + FIG AVE	SL 8
LANCASTR (1962)	2367.916	L+T IN CB IN FRONT OF PARK VIEW SCHOOL 60FT S AVE J ON C/L PRCD FERN AVE	SL 9
LANCASTR (1962)	2366.443	L+T SE COR AVE J + HARWOOD AVE 40FT OF AVE J + 1FT E OF BCR	SL 10
LANCASTR (1962)	2360.975	L+BN MCR SW COR AVE J + TENTH ST W	SL 11A
LANCASTR (1962)	2360.646	L+BN NE COR TENTH ST W + AVE J + 1FT N OF BCR	SL 12
LANCASTR (1962)	2354.960	L+T CONC WLK HSE NO 44540 TENTH ST W 5FT FROM FIRST STEP TO FRONT DOOR @ NE COR NORBERRY AVE + TENTH ST W	SL 14
LANCASTR (1962)	2345.559	L+T N CB LANCASTER BLVD 95FT W + 14FT N C/L INT LANCASTER BLVD + TENTH ST W	SL 16A
LANCASTR (1962)	2347.157	L+T IN CONC SLAB 79FT E + 104FT N C/L INT LANCASTER BLVD + TENTH ST W	SL 17A
LANCASTR (1962)	2339.658	L+BN 3FT N PP NO 271449E 45FT S + 30FT W C/L INT KETTERING ST + TENTH ST W	SL 18
LANCASTR (1962)	2338.969	L+BN IN E CB TENTH ST W 10FT N BCR @ NE COR KETTERING ST + TENTH ST W	SL 19
LANCASTR (1962)	2337.242	L+T IN CB RET @ SW COR JACKMAN ST + TENTH ST W 10FT N BCR	SL 20
LANCASTR (1962)	2336.894	L+T MCR @ NE COR JACKMAN ST + TENTH ST W	SL 21
LANCASTR (1962)	2332.846	L+T S CB AVE I IN E END CATCH BASIN OPENING 30FT S + 69FT E C/L INT AVE I + TENTH ST W	SL 22
LANCASTR (1962)	2331.555	L+T IN MCR @ NW COR AVE I + TENTH ST W	SL 23A
LANCASTR (1962)	2333.653	L+T N CB AVE I ON C/L PRCD FERN AVE	SL 24E

QUAD-YEAR	ELEV	DESCRIPTION (INCLUDE QUAD AND YEAR IN DESCRIPTION)	BM	NUMBER
LANCASTR (1962)	2336.581	L+T N CB AVE I CN C/L PROD ALLEY W OF DATE AVE	SL	25B
LANCASTR (1962)	2335.955	L+BN W EDGE CONC DRWY HSE NO 673 31FT W + 75FT N C/L INT ELM AVE + AVE I	SL	26A
LANCASTR (1962)	2337.161	L+T N CB AVE I CN C/L PROD CEDAR AVE	SL	27A
LANCASTR (1962)	2337.928	L+BN E CB CEDAR AVE 6FT S BCR @ SE COR CEDAR AVE + AVE I	SL	28
LANCASTR (1962)	2342.786	L+T W CB CEDAR AVE 3FT S BCR @ SW COR CEDAR AVE + JACKMAN ST	SL	29
LANCASTR (1962)	2341.250	L+T W CB DATE AVE 0.5FT N BCR @ NW COR DATE AVE + JACKMAN ST	SL	30
LANCASTR (1962)	2341.866	L+BN S CB JACKMAN ST 5FT W BCR @ SW COR OF ALLEY TO S BTWN FIG AVE + ELM AVE	SL	31
LANCASTR (1962)	2341.331	L+BN S CB JACKMAN ST 6FT W BCR @ SW COR FIG AVE + JACKMAN ST	SL	32
LANCASTR (1962)	2351.788	L+T CONC STEP HSE NO 45027 N DIVISION ST 295FT N + 54FT W C/L INT KETTERING ST + DIVISION ST	SL	34
LANCASTR (1962)	2351.138	L+T W EDGE CONC DRWY TO HSE NO 311 KETTERING ST 30FT N + 138FT W C/L INT KETTERING ST + SPEARMAN ST	SL	37
LANCASTR (1962)	2349.239	L+BN W CB YUCCA AVE 6FT N BCR @ NW COR YUCCA AVE + KETTERING ST	SL	38
LANCASTR (1962)	2350.271	L+T CONC BASE FENCE POST 30FT N OF C/L KETTERING + 15FT E OF E RAIL OF SP SIDING TR	SL	39
LANCASTR (1962)	2347.914	L+B E CB SIERRA HWY + 25FT N C/L KETTERING ST + 30FT E C/L SIERRA HWY	SL	40
LANCASTR (1962)	2348.258	L+T IN SW CB RET 26FT S C/L KETTERING ST + 30FT W C/L SIERRA HWY	SL	41
LANCASTR (1962)	2373.638	L+T IN CONC APRON IN NE COR GROCERY STORE @ SW COR NUGENT ST + DIVISION ST 26FT S + 33FT W C/L INT	SL	44
LANCASTR (1962)	2365.533	CS BR CAP MON @ C/L INT OF DIVISION ST + NEWGROVE ST (E EDGE)	SL	47
LANCASTR (1962)	2370.716	L+T NE COR CONC PORCH HSE NO 108 W NEWGROVE ST 50FT S C/L + 100FT W C/L DIVISION ST	SL	48
LANCASTR (1962)	2361.144	CS MON IN HAND HOLE @ C/L INT NEWGROVE ST + TREVOR AVE (E EDGE)	SL	49
LANCASTR (1962)	2361.695	L+T IN CONC WK TO HSE NO 310 NEWGROVE ST 31FT S C/L + 135FT W C/L TREVOR AVE	SL	50
LANCASTR (1962)	2363.632	L+BN IN E CB SIERRA HWY 115FT S C/L PROD NEWGROVE ST 16FT S OF END OF CB	SL	51
LANCASTR (1962)	2362.883	L+T @ MCR SW COR NEWGROVE ST + SIERRA HWY	SL	52
LANCASTR (1962)	2345.702	L+T @ MCR NW COR AVE I + DIVISION ST	SL	53

QUAD-YEAR	ELEV	DESCRIPTION (INCLUDE QUAD AND YEAR IN DESCRIPTION)	BM NUMBER
LANCASTR (1962)	2345.830	L+T @ MCR SW COR AVE I + DIVISION ST	SL 54
LANCASTR (1962)	2355.183	L+BRAD S END CUL-DE-SAC RAYSACK AVE ON C/L PROD 85FT N C/L AVE I	SL 55A
LANCASTR (1962)	2355.018	L+T N CB 3FT W BCR 40FT N + 62FT W C/L INT AVE I + 5TH ST E	SL 57A
LANCASTR (1962)	2361.798	USC+GS BR CAP IN CONC POST 8IN UP 48FT N + 56FT E C/L INT AVE I + 10TH ST E MKD (C1155, 1961)	SL 58A
LANCASTR (1962)	2361.473	CS MON FLUSH 30FT E + 30FT N C/L INT 10TH ST E + AVE I MKD (WC)	SL 59
LANCASTR (1962)	2361.825	USC+GS BR CAP 78FT W + 40FT S C/L INT AVE I + 10TH ST E MKD (Y 488 RESET 1961)	SL 60A
LANCASTR (1962)	2378.377	BR CAP IN CONC 20IN DN @ C/L INT LANCASTER BLVD + 10TH ST E	SL 61
LANCASTR (1962)	2381.677	L+T W EDGE OF CONC DR OF GARAGE TO HSE NO 1016 LANCASTER BLVD 45FT S C/L + 145FT E 10TH ST E	SL 62
LANCASTR (1962)	2397.912	L+T NR MCR @ SW COR 10TH ST E + AVE J 48FT W + 45FT S C/L INT	SL 63A
LANCASTR (1962)	2396.901	BR CAP IN CONC 18IN DN @ C/L INT AVE J + 10TH ST E (W EDGE)	SL 64
LANCASTR (1962)	2391.824	CS MON IN WELL @ C/L INT AVE J + 5TH ST E MKD (T7N, R12W, 1/4 COR 14-23)	SL 65A
LANCASTR (1962)	2385.354	L+BN @ MCR SE COR 4TH ST E + AVE J (SERVICE RD)	SL 66A
LANCASTR (1962)	2384.552	SET L+BN @ MCR SE COR KIRKLAND AVE + AVE J	SL 67
LANCASTR (1962)	2382.961	L+BN 1FT E BCR @ SE COR AVE J + DIVISION ST	SL 68
LANCASTR (1962)	2381.370	CS MON @ C/L INT AVE J + DIVISION ST	SL 69
LANCASTR (1962)	2383.408	L+T IN CONC PORCH TO BLDG NO 203 8FT N OF S EDGE 0.5FT W OF E EDGE 33FT N OF C/L AVE J + 600FT E DIVISION ST	SL 70A
LANCASTR (1962)	2413.497	L+BN E SIDE OF 36IN STANDPIPE 263FT NW OF PP NO 917614-E 215FT W C/L 10TH ST E + 0.5 MI S OF AVE J	SL 71
LANCASTR (1962)	2414.136	CS MON IN WELL 8IN DN @ C/L INT 10TH ST E + AVE J-8 0.5 MI S AVE J MKD (T7N, R12W 1/4 COR, 23-24)	SL 72B
LANCASTR (1962)	2434.590	BR CAP IN CONC 15IN DN @ C/L INT 10TH ST E + AVE K	SL 73
LANCASTR (1962)	2436.041	CHIS X IN TOP OF BOLT ON S SIDE OF FIRE HYDRANT BASE 50FT W C/L 10TH ST E + 28FT S C/L AVE K	SL 74
LANCASTR (1962)	2425.927	CS MON IN WELL @ C/L INT AVE K + 6TH ST E	SL 75A
LANCASTR (1962)	2426.538	CS MON IN CONC POST 3IN UP 40FT S + 55FT W C/L INT AVE K + 6TH ST E MKD (CSBM 105-9, 1958, RE 5869)	SL 76A

QUAD-YEAR	ELEV	DESCRIPTION (INCLUDE QUAD AND YEAR IN DESCRIPTION)	BM NUMBER
LANCASTR (1962)	2425.496	CHIS X IN TOP OF BOLT ON W SIDE OF FIRE HYDRANT BASE 25FT S C/L AVE K + 135FT W DRWY TO HSE NO 504 AVE K	SL 77
LANCASTR (1962)	2422.436	CS BR CAP IN CONC 12IN DN @ C/L INT AVE K + DIVISION ST	SL 79
LANCASTR (1962)	2400.793	L+BN @ MCR @ NE COR DIVISION ST + AVE J-8	SL 80
LANCASTR (1962)	2399.660	L+BN @ MCR SE COR DIVISION ST + AVE J-7	SL 81
LANCASTR (1962)	2416.599	CHIS X IN TOP BOLT ON W SIDE OF FIRE HYDRANT 30FT S C/L AVE K + OPP HSE NO 461 AVE K	SL 82
LANCASTR (1962)	2414.038	CS MON IN WELL 18IN DN @ C/L INT AVE K + 5TH ST W (N SIDE)	SL 83
LANCASTR (1962)	2406.381	CHIS X ON TOP OF BOLT ON NE SIDE OF FIRE HYDRANT BASE 30FT S C/L AVE K + 75FT W C/L 10TH ST W	SL 84
LANCASTR (1962)	2405.325	L+BN @ NE COR OF SO CAL GAS CO VALVE BOX 44FT N C/L AVE K + 115FT W C/L 10TH ST W	SL 85A
LANCASTR (1962)	2380.940	CS MON @ C/L INT 10TH ST W + AVE J-8 (W EDGE)	SL 86
LANCASTR (1962)	2381.198	L+T 1FT N BCR @ NE COR 10 ST W + AVE J-8	SL 87
LANCASTR (1962)	2377.458	L+T S CB AVE J-6 1FT E BCR @ SE COR 10TH ST W + AVE J-6	SL 88
LANCASTR (1962)	2364.144	CS MON IN WELL 8IN DN @ C/L INT OLDFIELD ST + DATE AVE MKD (CS MON RE 5869)	SL 91A
LANCASTR (1962)	2364.247	L+T @ MCR NW COR OLDFIELD ST + DATE AVE	SL 92
LANCASTR (1962)	2362.699	L+T @ MCR SW COR ELM AVE + OLDFIELD ST	SL 93A
LANCASTR (1962)	2397.659	BRONZE DISK IN CONC 6IN DN 60FT E + 125FT S C/L INT SIERRA HWY + AVE J-8 MKD (S 811 1947 RESET 1955)	SL 118
LANCASTR (1962)	2347.818	USC+GS BRASS DISK IN CONC 4IN UP 65FT E DR TO ANTELOPE VALLEY FAIR 681FT E OF C/L DIVISION ST + 41FT N C/L AVE I MKD (+ 488 1955)	SL 119
LANCASTR (1962)	2326.585	L+T IN N SERVICE ROAD CB @ NE COR AVE I + 15TH ST W 51FT E + 80FT N C/L INT	SL 120
LANCASTR (1962)	2326.752	RDBM TAG IN S SERVICE ROAD CB @ SW COR AVE I + + 15TH ST W 51FT W + 80FT S C/L INT	SL 121
LANCASTR (1962)	2323.460	CS MON 5IN UP @ NE COR AVE I + 20TH ST W 40FT N + 66FT E C/L INT	SL 122A
LANCASTR (1962)	2323.727	USGS BRASS DISK 3IN UP 36FT N + 6FT W C/L INT AVE I + 20TH ST W MKD (RR 37-1929)	SL 123
LANCASTR (1962)	2331.591	CS BRASS CAP MON IN WELL 12IN DN @ C/L INT 20TH ST W + LANCASTER BLVD MKD (1/4 SEC COR 16-17 T7N R12W) (E EDGE)	SL 124
LANCASTR (1962)	2331.686	RDBM TAG IN CB AT END OF CUL-DE-SAC 63FT W + 60FT S OF C/L INT LANCASTER BLVD + 20TH ST W	SL 125

QUAD-YEAR	ELEV	DESCRIPTION (INCLUDE QUAD AND YEAR IN DESCRIPTION)	BM NUMBER
LANCASTR (1962)	2342.740	CS BR CAP MON @ C/L INT AVE J + 20TH ST W MKD (R12W T7N SEC 17-16-20-21) (N EDGE)	SL 126
LANCASTR (1962)	2344.595	RDMB TAG IN N CB @ NE COR AVE J + 20TH ST W 108FT E + 30FT N C/L INT	SL 127
LANCASTR (1962)	2350.367	RDBM TAG 6FT W BCR @ SW COR AVE J + 15TH ST W 66FT W + 30FT S C/L INT	SL 128
LANCASTR (1962)	2351.094	RDBM TAG 40FT S BCR @ SE COR AVE J + 15TH ST W 100FT S + 30FT E C/L INT	SL 129
LANCASTR (1962)	2340.070	L+BN 3FT W OF BCR @ SW COR LANCASTER BLVD + LOWTREE AVE 53FT W + 30FT S C/L INT	SL 131
LANCASTR (1962)	2337.689	L+BN 4FT N BCR @ NE COR LANCASTER BLVD + 15TH ST W 69FT N + 30FT E C/L INT	SL 132
LANCASTR (1962)	2336.050	L+T 3FT S + 1FT W OF EDGE OF CONC DR TO HSE NO 1656 LANCASTER BLVD 50FT S C/L + 1000FT W 15TH ST W	SL 133
BASELINE (1955)	2493.837	USC+GS DISK IN CONC POST 92FT N + 65FT W C/L INT AVE M + 40TH ST W MKD (F 489 1955)	SL 172A
BASELINE (1955)	2470.198	USC+GS DISK IN CONC POST 106FT W C/L 40TH ST W + 0.1 MI N AVE M 150FT S OF E-W RUNWAY QUARTZ HILL AIRPORT MKD (G 489 1955)	SL 173A
BASELINE (1955)	2453.145	USC+GS DISK IN CONC POST @ QUARTZ HILL AIRPORT WIND INDICATOR 90FT S OF E-W RUNWAY MKD (H 489 1955)	SL 174A
BASELINE (1955)	2452.575	USC+GS DISK IN CONC GASOLINE STAND 150FT E OF SE COR OF HANGAR @ QUARTZ HILL AIRPORT MKD (J 489 1955)	SL 175A
LANCASTR (1962)	2450.690	L+T NE COR CONC CB HSE NO 42349 45TH ST W 185FT S + 50FT W C/L INT AVE L-8 + 45TH ST W	SL 176
LANCASTR (1962)	2461.654	L+T NE COR CONC SLAB HSE NO 42357 50TH ST W 100FT W + 60FT S C/L INT 50TH ST W + AVE L-8	SL 177
LANCASTR (1962)	2477.701	L+T CONC WLK IN FR OF CHURCH 45FT N + 65FT W C/L INT 50TH ST W + AVE L-12	SL 178
LANCASTR (1962)	2485.155	L+T CONC PORCH TELEPHONE BOOTH 50FT W + 45FT N C/L INT 50TH ST W + AVE L-14	SL 179
BASELINE (1955)	2495.032	L+T CONC SLAB SW COR PORCH TO HSE NO 42002 50TH ST W 48FT N + 66FT E C/L INT 50TH ST W + AVE M	SL 180A
LANCASTR (1962)	2428.444	L+T NE COR CONC WK HSE NO 42921 50TH ST W 71FT W + 390FT S C/L INT 50TH ST W + AVE K-12	SL 181
LANCASTR (1962)	2425.151	L+T N CONC DR HSE NO 42958 50TH ST W 44FT E + 60FT S C/L INT 50TH ST W + AVE K-12	SL 182
LANCASTR (1962)	2411.801	2IN IRON PIPE 6IN UP 40FT W OF C/L 50TH ST W ON C/L AVE K-8	SL 183
LANCASTR (1962)	2410.090	CS MON 18IN DN C/L INT 50TH ST W + AVE K-8 MKD (1/4 COR 25, 26) (USE E EDGE)	SL 184
LANCASTR (1962)	2380.077	CS MON 1FT DN C/L INT 50TH ST W + AVE K MKD (T7N R13W COR SEC 23, 24, 25, 26, 1927) (W EDGE)	SL 185
LANCASTR (1962)	2382.336	L+T NW COR CONC PORCH HSE NO 4849 AVE K 115FT E + 120FT N C/L INT AVE K + 50TH ST W	SL 186

QUAD-YEAR	ELEV	DESCRIPTION (INCLUDE QUAD AND YEAR IN DESCRIPTION)	BM NUMBER
LANCASTR (1962)	2378.086	SPK + L E SIDE WIER BOX 375FT N + 25FT W C/L INT AVE K + 45TH ST W	SL 187
LANCASTR (1962)	2376.824	L+T CONC STEP TO BACK OF HSE 425FT N + 85FT W C/L INT AVE K + 45TH ST W	SL 188
LANCASTR (1962)	2350.598	RDBM TAG S SIDE WIER BOX 97FT E + 85FT N C/L INT AVE J + 45TH ST W (TO THE N)	SL 191
LANCASTR (1962)	2349.253	RDBM TAG IN CONC SLAB 130FT S OF C/L AVE J + 216FT E OF C/L 45TH ST W TO THE N	SL 192
LANCASTR (1962)	2347.427	L+T IN CONC WLK TO HSE NO 4320 AVE J + 100FT S OF C/L AVE J + 500FT E OF 45TH ST W	SL 193
LANCASTR (1962)	2344.061	ENG TAG + BRAD IN 2IN IP RP TO C/L INT 3IN UP @ SW COR AVE J + 40TH ST W 50FT S + 50FT W C/L INT	SL 194A
LANCASTR (1962)	2344.121	CS MON IN WELL 8IN DN @ C/L INT AVE J + 40TH ST W MKD (T7N, R12W 13-18-19-24) USE N EDGE	SL 195A
LANCASTR (1962)	2341. 103 ⁸¹²	L+T CONC SLAB IN FRONT OF CHURCH @ NE COR AVE J + 35TH ST W 130FT N + 835FT E C/L INT MKD (BM)	SL 196A
LANCASTR (1962)	2341.103	L+T IN CONC @ ENTRANCE TO CHICKEN HOUSE 100FT E OF HSE NO 3829 W AVE J + 120FT N C/L AVE J + 0.5 MI E OF 40TH ST W	SL 197
LANCASTR (1962)	2342.312	L+T IN SE COR CONC PORCH TO HSE NO 3129 W AVE J + 75FT N OF C/L AVE J + 0.85 MI E OF 40TH ST W	SL 198
LANCASTR (1962)	2342.008	PM IN DIAMOND ON SMH RIM IN NW QUAD 385FT E HSE NO 3129 W AVE J 90FT E OF PP NO 800770E + 0.95 MI E OF 40TH ST W	SL 199
LANCASTR (1962)	2338.728	CS MON 18IN DEEP NR C/L AVE J + 25TH ST W MKD 1/4 COR SEC 17, 20 T7N (USE N EDGE)	SL 200
LANCASTR (1962)	2340.162	PM IN DIAMOND ON SMH RIM IN THE SW QUAD 15FT N C/L AVE J + 6FT W C/L 25TH ST W	SL 201
BASELINE (1955)	2523.621	CS MON @ C/L INT OF AVE M + 90TH ST E T6N T7N R10W SEC COR 31,32-5(6 1925 USE N EDGE)	SL 246A
LANCASTR (1962)	2525.746	RDBM TAG @ S SIDE OF CONC BASE OF OLD WELL 150FT W C/L 90TH ST E 80FT N C/L AVE M PROD	SL 247A
LANCASTR (1962)	2496.287	CS MON IN WELL @ C/L INT AVE L + 90TH ST E MKD (T7N R10W, SEC COR 29,30,31,32)	SL 254A
LANCASTR (1962)	2476.384	L+T NR E EDGE OF 14IN STANPIPE W/BREATHING PIPE 60FT W C/L 90TH ST E + 40FT N C/L AVE K	SL 262A
LANCASTR (1962)	2473.663	CS MON W/BR CAP @ C/L INT AVE K + 90TH ST E T7N R10W SEC 19,20,29,30	SL 263A
LANCASTR (1962)	2455.732	CS MON W/BR CAP @ C/L INT AVE J-8 + 90TH ST E R10W T7N 19,20 1/4 SEC	SL 266A
LANCASTR (1962)	2458.645	L+T SE COR CONC PORCH OF HSE NO 44005 90TH ST E 85FT W C/L + 40FT N C/L AVE J-8	SL 267A
LANCASTR (1962)	2451.326	L+T N END 1ST STEP OF PORCH OF HSE NO 44283 90TH ST E 100FT W C/L + 1000FT S AVE J	SL 269A
LANCASTR (1962)	2445.446	L+T NR SE EDGE CONC BASE NR CTR OF GAS PUMP IS1 60FT W C/L 90TH ST E + 60FT N C/L AVE J	SL 270A

QUAD-YEAR	ELEV	DESCRIPTION (INCLUDE QUAD AND YEAR IN DESCRIPTION)	BM NUMBER
LANCASTR (1962)	2443.661	CS MON 15IN DN @ C/L INT 90TH ST E + AVE J T7N R10W SEC COR 18,17,19,20	SL 271B
LANCASTR (1962)	2434.156	L+T NR E EDGE CONC PORCH HSE NO 44709 90TH ST E 6FT N OF S EDGE OF PORCH 2200FT N AVE J	SL 273A
LANCASTR (1962)	2428.003	CS MON 20IN DN @ C/L 90TH ST E 1/4 SEC 17,18 T7N R10W 0.5 MI N OF AVE J	SL 274B
LANCASTR (1962)	2415.146	CS MON 12IN DN @ C/L INT 90TH ST E + AVE I (R10W T7N COR SEC 7,8,17,18)	SL 278B
LANCASTR (1962)	2417.835	L+T @ SE COR CONC SIDE OF WTR DITCH 140FT W C/L 90TH ST E + 40FT N C/L AVE I	SL 279A
LANCASTR (1962)	2343.067	RDBM TAG IN S END OF GAS PUMP IS1 @ NE COR 90TH ST E + AVE E 75FT N + 80FT E C/L INT	SL 282A
LANCASTR (1962)	2402.781	CS MON IN CONC SQ 2IN UP 3FT S PP NO 991755E 39FT S AVE I + 70FT W 70TH ST E MKD (BM 107-30 1961 RE 58-69)	SL 283A
LANCASTR (1962)	2413.729	CS MON IN CONC SQ 2IN UP 1FT N TP NO K3143Y 30FT N C/L AVE I + 27FT W 85TH ST E PROP .5 MI W 90TH ST E MKD (BM 107-27 1961 RE 58-69)	SL 284A
LANCASTR (1962)	2415.388	CS MON 2FT S PP NO 991781E 30FT S C/L AVE I + 47FT W C/L 80TH ST E MKD (BM 107-28 1961 RE 58-69)	SL 285A
LANCASTR (1962)	2394.992	CS MON W/BR CAP @ C/L INT AVE H + 90TH ST E R10W T7N COR SEC 5,6,7,8	SL 286A
LANCASTR (1962)	2396.465	RDBM TAG @ CTR OF OLD CONC BASE OF MTR MOUNT 40FT W C/L 90TH ST E + 100FT N C/L AVE H	SL 287A
LANCASTR (1962)	2411.997	CS MON @ C/L OF AVE I 0.5 MI W OF 90TH ST E R10W T7N SEC 7-18	SL 288A
LANCASTR (1962)	2413.492	RDBM TAG @ SE COR OF CONC SLAB OF WATER TANK HSE 60FT N C/L AVE I 0.5 MI W OF 90TH ST E @ HSE NO 8359 AVE I	SL 289A
LANCASTR (1962)	2418.732	RDBM TAG TOP OF CONC SUPPORT OF 1GE WATER TANK 90FT N C/L AVE I + 45FT W C/L 80TH ST E	SL 290
LANCASTR (1962)	2416.896	L+T @ SW COR OF CONC WLK TO HSE NO 7848 AVE I 200FT W C/L 80TH ST E + 80FT N C/L AVE I	SL 291
LANCASTR (1962)	2405.371	L+T W SIDE OF RIM OF 12IN STAND PIPE 50FT E OF PRIVATE ROAD TO THE N + 50FT N C/L AVE I 0.5 MI W OF 80TH ST E	SL 292
LANCASTR (1962)	2409.069	L+T @ NE COR OF WEIR BOX 3FT UP 70FT N C/L AVE I + 10FT W OF PRIVATE RD 0.5 MI W OF 80TH ST E N OF ELECT WATER PUMP + 45FT NW OF PP NO 482171E	SL 293
LANCASTR (1962)	2405.377	CS MON IN CONC SQ FLUSH 15FT W PP NO 482159E 25FT S C/L AVE I + 25 W C/L 75TH ST E 0.5 MI E 70TH ST E MKD (BM 107-29 1961 RE 58-69)	SL 294A
LANCASTR (1962)	2402.243	L+T @ W END CONC WLK TO HSE NO 7040 AVE I 55FT S C/L AVE I + 400FT E OF 70TH ST E	SL 295
LANCASTR (1962)	2402.433	L+T S EDGE CONC WLK TO HSE NO 7030 AVE I 55FT S C/L AVE I + 300FT E 70TH ST E	SL 296
LANCASTR (1962)	2400.829	CS MON IN CONC 2IN UP 33FT S C/L AVE I + 142FT W C/L 65TH ST E 3FT S PP NO 1121124 MKD (S BM 107-31, RE 5869, 1961)	SL 297A

QUAD-YEAR	ELEV	DESCRIPTION (INCLUDE QUAD AND YEAR IN DESCRIPTION)	BM NUMBER
LANCASTR (1962)	2403.981	RDBM TAG TOP OF CONC WEIR BOX 35FT N C/L AVE I 400FT E OF 65TH ST E 50FT E OF DRWY TO HSE NO 6535 AVE I	SL 298
LANCASTR (1962)	2402.760	L+T E CB DRWY HSE NO 6007 AVE I 40FT N + 100FT E C/L INT E AVE I + 60TH ST E	SL 299A
LANCASTR (1962)	2402.665	L+T W CB DRWY HSE NO 6007 AVE I 42FT N + 90FT E C/L INT E AVE I + 60TH ST E	SL 300A
LANCASTR (1962)	2395.219	L+T W END CONC GARAGE SLAB HSE NO 5347 AVE I 130FT N + 210FT W C/L INT AVE I + 55TH ST E	SL 301
LANCASTR (1962)	2395.136	L+T S END CONC PORCH HSE NO 5335 AVE I 140FT N + 325FT W C/L INT AVE I + 55TH ST E	SL 302
LANCASTR (1962)	2390.850	L+T W END 1ST HSE NO 5018 AVE I 90FT S + 165FT E C/L INT AVE I + 50TH ST E	SL 303
LANCASTR (1962)	2390.726	CS MON (WITNESS COR) CS MON 30FT N + 30FT E C/L INT AVE I + 50TH ST E MKD T7N R11W SEC 9-10- 15-16 (USE N EDGE)	SL 304
LANCASTR (1962)	2387.319	2IN IP 1FT ABOVE GROUND 40FT S OF C/L INT AVE I + 45TH ST E (USE E EDGE)	SL 305
LANCASTR (1962)	2385.030	L+T NE COR CONC WLK HSE NO 4359 AVE I 100FT N + 80FT W C/L INT AVE I + 45TH ST E	SL 306
LANCASTR (1962)	2385.011	L+T NE COR CONC WLK HSE NO 4010 AVE I 90FT S + 140FT E C/L INT AVE I + 40TH ST E	SL 307
LANCASTR (1962)	2384.443	CS MON (WITNESS COR) 30FT S + 30FT W C/L INT AVE I + 40TH ST E	SL 308
LANCASTR (1962)	2382.865	L+T SE COR CONC SLAB @ NE COR BLDG NO 3606 AVE I 150FT E OF 36TH ST E	SL 309
LANCASTR (1962)	2383.925	RDBM TAG IN CONC HDWL 30FT N + 135FT W C/L INT AVE I + 35TH ST E	SL 310
LANCASTR (1962)	2380.703	CS MON IN CONC 2IN UP 29FT S + 67FT W C/L INT AVE I + 30TH ST E 3FT S PP NO 1219368 E MKD (BM 107-38, 1961, RE 5869)	SL 311A
LANCASTR (1962)	2376.636	CS MON IN WELL @ C/L INT AVE I + 25TH ST E PROPOSED 0.5 MI E 20TH ST E MKD (T7N, R11W, 1/4 COR 7-18)	SL 313A
LANCASTR (1962)	2376.326	L+T W END OF CONC WLK TO HSE NO 2243 AVE I 1FT E OF DIRT DRWY 133FT N C/L AVE I 800FT W OF 23RD ST E	SL 314
LANCASTR (1962)	2374.275	USGS MON W/BR CAP 6IN UP 30FT S + 35FT E C/L INT 20TH ST E + AVE I MKD (LS 11 1929)	SL 315
LANCASTR (1962)	2373.521	L+T SE COR OF CONC APRON OF GAS STA 55FT N C/L AVE I + 65FT W C/L 20TH ST E	SL 316
LANCASTR (1962)	2353.787	L+T IN NW COR OF 4FT SQ CONC SLAB AT NW COR HSE NO 44126 20TH ST W 1700FT S OF AVE J 68FT E OF C/L 20TH ST W	SL 319
LANCASTR (1962)	2357.660	CO SUR BR MON 18IN DN NR C/L INT 20TH ST E + AVE J-8 MKD (1/4 SEC COR)	SL 320
LANCASTR (1962)	2413.898	CS BR CAP MON 18IN DN @ C/L INT 20TH ST W + AVE K-8 MKD (1/4 COR SEC 29-28 T7N R12W)	SL 323

