

**COUNTY OF LOS ANGELES**  
**ROAD DEPARTMENT**

**PRECISE**  
**BENCH MARK LIST**



**HIGH VISTA QUAD**  
**(LANCASTER EAST)**

**1968 ADJUSTMENT**

**NGVD29 DATUM**

## PREFACE

The Road Department level net is composed of more than 1,000 miles of levels supporting in excess of 10,000 bench marks. In 1964-65, a major readjustment of the net was undertaken. To emphasize the complete break with previous elevations, the SY, SG & SL series bench marks have been re-labeled BY, BG & BL, respectively.

To facilitate the adjustment, indexing, and distribution of adjusted values of the net, the County territory was divided into 31 quads or areas. For identification purposes each quad was given a name, viz., "Rosemead," "La Mirada," "Santa Fe," etc. When bench marks and elevations in the Road Department net are used, the name of the quad in which the bench mark is located and the date of the adjustment of the elevation must be included in the bench mark description, e.g.,

BG 1887 ---L+BN IN CONC HDWL OF DRAIN PIPE UNDER DR 218 FT  
NE +18 FT SE C/L INT GRAND AVE +CAMERON AVE MKD (BM)  
(COVINA ---1965) ELEV. 696.238

It is expected that this general adjustment will, for the most part, remain sound for the next 8 to 12 years. As new circuits are completed, however, re-adjustment of individual quads may become advisable. It is expected that these subsequent adjustments will be in the nature of a few hundredths of a foot. When a quad is re-adjusted, new elevation lists will be published and the date of the re-adjustment will replace the "1965" at the end of the bench mark description. Two bench marks in the same quad with different adjustment dates will not normally join each other. Since all adjustments taper out to nothing at the periphery of the quad, any bench mark in one quad will join any bench mark in another quad regardless of their respective adjustment dates.

The basic accuracy of the net is reflected by an indicated field probable error of plus or minus 0.012 foot per mile of leveling as determined from 298 conditions of closure. However, many years experience in vertical control in the greater Los Angeles basin and Antelope Valley indicate that because of varying degrees of subsidence and heaving, the true datum is recovered only by obtaining substantial agreement of a number of bench marks.

The users of this net are invited to assist in its maintenance by notifying this Department of cases of obliteration, apparent mistakes in descriptions or elevations, and proven disturbance of bench marks.

---

DATUM: U. S. Coast and Geodetic Survey Sea Level Datum  
of 1929, through the medium of the Los Angeles  
County Engineer Precise Level Net, 1963 Adjust-  
ment.

ABBREVIATIONS USED IN BENCH MARK LISTINGS

ABUT - - - - -	Abutment	EC - - - - -	End of Curve
ALG - - - - -	Along	ENT - - - - -	Entrance
ANG PT - - - - -	Angle Point	FL - - - - -	Floor
B/W - - - - -	Back of Walk	FTG - - - - -	Footing
BCR - - - - -	Beginning of Curb Return	F/W - - - - -	Front of Walk
BC - - - - -	Beginning of Curve	GAR - - - - -	Garage
BLDG - - - - -	Building	HDWL - - - - -	Headwall
BM - - - - -	Bench Mark	HSE - - - - -	House
BT SPK - - - - -	Boat or Bolt Spike	INT - - - - -	Intersection
BR CAP - - - - -	Brass or Bronze Cap	IP - - - - -	Iron Pipe
C B - - - - -	Catch Basin	LT - - - - -	Left
CTR - - - - -	Center	LACE - - - - -	L. A. City Engineer
C/L - - - - -	Center Line	LACS - - - - -	L. A. County Engineer
C/L INT - - - - -	Center Line Intersection	L AFC - - - - -	L. A. Co. Flood Control
C/L PROD - - - - -	Center Line Produced	L+BN - - - - -	Lead and Bench Nail
CONC - - - - -	Concrete	L+BR - - - - -	Lead and Brad
COR - - - - -	Corner	L+N - - - - -	Lead and Nail
COE - - - - -	Corps of Engineers	L+RDEM TAG - - - - -	Lead and Road Dept. Bench Mark Tag
CULV - - - - -	Culvert	L+SPK - - - - -	Lead and Spike
CB - - - - -	Curb	L+T - - - - -	Lead and Tack
CS MON - - - - -	County Engineer Monument	MCR - - - - -	Middle of Curb Return
CS BR CAP - - - - -	County Engineer Brass Cap	MKD - - - - -	Marked
CT SPK - - - - -	Cut Spike	MC - - - - -	Middle of Curve
DR - - - - -	Drive or Driveway	MON - - - - -	Monument
E/O - - - - -	East of	N/O - - - - -	North of
ECR - - - - -	End of Curb Return	NR - - - - -	Near

ABBREVIATIONS USED IN BENCH MARK LISTINGS . . . CONTINUED

OPP - - - - - Opposite  
PI - - - - - Point of Intersection  
PK+W - - - - - PK Nail and Washer  
P/L - - - - - Property Line  
POST - - - - - Point on Semi-Tangent  
PP - - - - - Power Pole  
PVMT - - - - - Pavement  
PROD - - - - - Produced  
RD - - - - - Road  
RDEM - - - - - Road Dept. Bench Mark  
RR - - - - - Railroad  
RT - - - - - Right  
R/W - - - - - Right of Way  
SDMH - - - - - Storm Drain Manhole  
SMH - - - - - Sewer Manhole  
SPK - - - - - Spike  
ST+W - - - - - Spike Tin and Washer  
S/O - - - - - South of  
TP - - - - - Telephone Pole  
USC+GS - - - - - U. S. Coast and Geodetic Survey  
USGS - - - - - U. S. Geological Survey  
WK - - - - - Walk  
W/O - - - - - West of

Q U A D

# H I V I S T A Q U A D

L A N C A S T E R

PALMDALE  
Q U A D

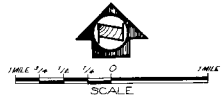
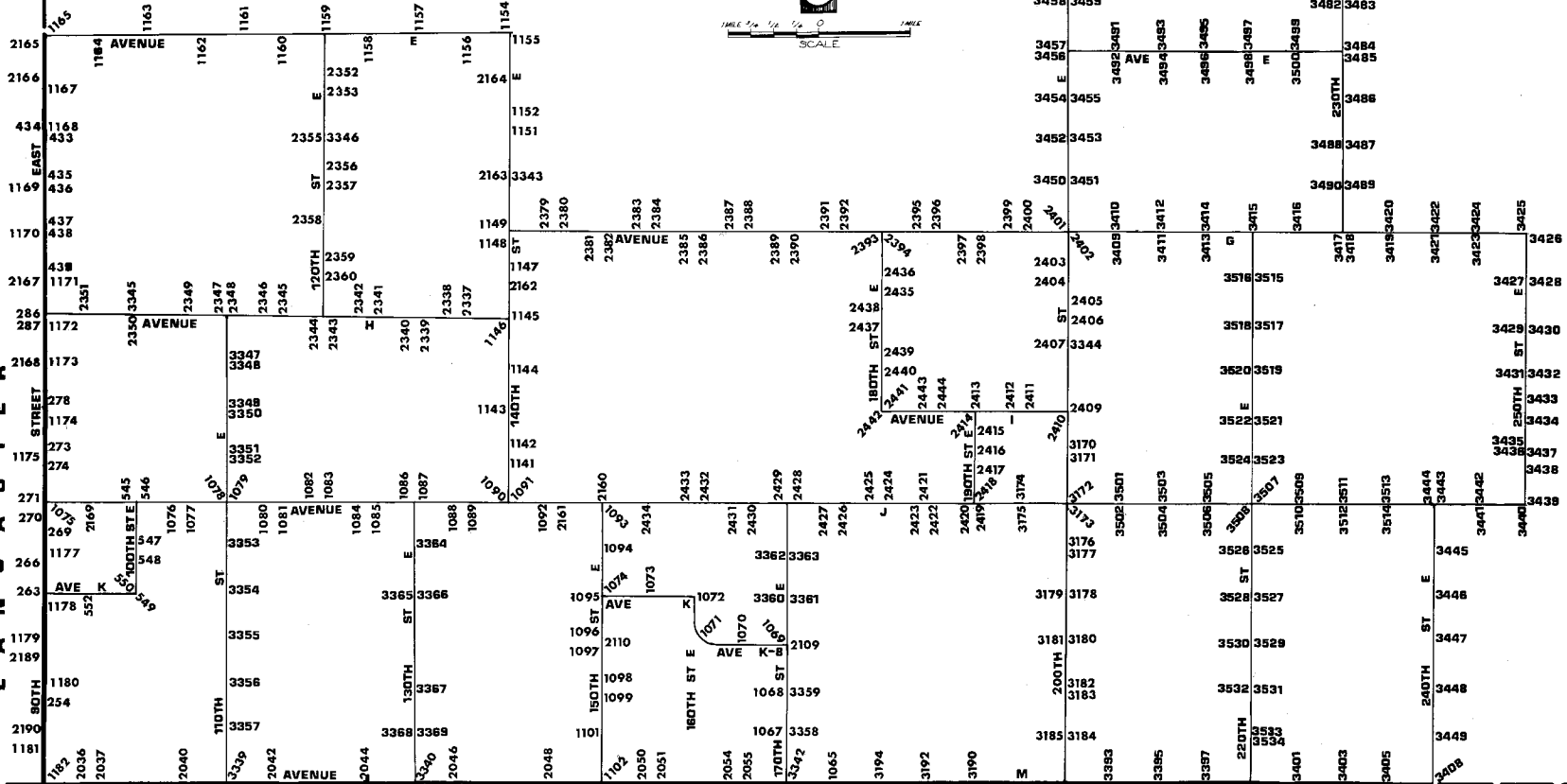
L L A N O

Q U A D

C O U N T Y

B E R N A R D I N O

S A N



QUAD-YEAR	ELEV	DESCRIPTION (INCLUDE QUAD AND YEAR IN DESCRIPTION)	BM NUMBER
BASELINE (1965)	2526.911	CS MON IN WELL @ C/L INT AVE M + 90TH ST E MKD (SEC COR 31 32 5 6 T6 (R10W T7N))	BL 246A
BASELINE (1965)	2496.469	CS MON IN WELL @ C/L INT AVE L + 90TH ST E MKD (T7N R10W, SEC COR 29,30,31,32)	BL 254A
BASELINE (1965)	2473.471	CS MON 30IN DN @ C/L INT AVE K + 90TH ST E MKD (T7N R10W SEC 19 20 29 30)	BL 263A
BASELINE (1965)	2454.755	CS MON 30IN DN @ C/L INT AVE J-8 + 90TH ST E MKD (R10W T7N 1/4 SEC 19 20)	BL 266A
BASELINE (1965)	2450.188	L+T N END 1ST STEP OF PORCH OF HSE NO 44233 90TH ST E 100FT W C/L + 1000FT S AVE J	BL 269A
BASELINE (1965)	2444.163	L+T NR SE EDGE CONC BASE NR CTR OF GAS PUMP ISL 60FT W C/L 90TH ST E + 60FT N C/L AVE J	BL 270A
BASELINE (1965)	2442.427	CS MON 15IN DN @ C/L INT 90TH ST E + AVE J MKD (T7N R10W SEC COR 18 17 19 20)	BL 271A
BASELINE (1965)	2432.291	L+T NR E EDGE CONC PORCH HSE NO 44709 90TH ST E 79FT W C/L + 2200FT N AVE J 6FT N OF S EDGE PORCH	BL 273A
BASELINE (1965)	2426.043	CS MON 20IN DN @ C/L INT 90TH ST E + AVE I-8 MKD (1/4 SEC 17 18 T7N R10W)	BL 274A
BASELINE (1965)	2413.455	CS MON 12IN DN @ C/L INT 90TH ST E + AVE I MKD (R10W T7N COR SEC 7,8,17,18)	BL 278A
BASELINE (1965)	2393.618	CS MON @ C/L INT AVE H + 90TH ST E MKD (R10W T7N COR SEC 5 6 7 8)	BL 286A
BASELINE (1965)	2395.076	RDBM TAG @ CTR OF OLD CONC BASE OF MTR MOUNT 40FT W C/L 90TH ST E + 100FT N C/L AVE H	BL 287A
BASELINE (1965)	2355.341	L+T CONC FOUNDATION OF WATER TOWER 6FT W + 1.5FT N OF SE COR @ NW COR 90TH ST E + AVE F 45FT N + 95FT W C/L INT MKD (SLBM)	BL 433A
BASELINE (1965)	2354.983	CS MON 12IN DN @ C/L INT 90TH ST E + AVE F MKD (SEC COR 30 29 31 32 R10W T8N) (E EDGE)	BL 434A
BASELINE (1965)	2366.329	L+T 1ST STEP OF CONC PORCH OF APT UNIT NO 47205 @ THE NW COR 90TH ST E + AVE F-8 140FT W + 70FT N C/L INT	BL 435A
BASELINE (1965)	2365.634	2IN IP WITH CONC PLUG + BT SPK @ C/L INT 90TH ST E + AVE F-8	BL 436A
BASELINE (1965)	2373.497	CS MON IN WELL 15IN DN @ C/L INT 90TH ST E + AVE G MKD (SEC COR 31 32 6 5 R10W T8N T7N)	BL 437A
BASELINE (1965)	2374.836	RD MON IN WELL WITH CONC COLLAR @ SE COR 90TH ST E + AVE G 30FT E + 40FT S C/L INT	BL 438A
BASELINE (1965)	2385.796	2IN IP IN CONC WITH BR CAP ON C/L AVE G-8 30FT W C/L 90TH ST E MKD (WC SEC 6 R10W T7N)	BL 439A
HI VISTA (1968)	2451.549	RDBM TAG CONC LID OF FLAT JUNCTION BOX 250FT W C/L 100TH ST E + 36FT N C/L AVE J	BL 545
HI VISTA (1968)	2448.649	L+T 2IN DN @ C/L INT AVE J + 100TH ST E	BL 546
HI VISTA (1968)	2466.663	RDBM TAG CONC PUMP BASE (OLD) 60FT W C/L 100TH ST E + 130FT N C/L AVE J-8	BL 547

QUAD-YEAR	ELEV	DESCRIPTION (INCLUDE QUAD AND YEAR IN DESCRIPTION)	BM NUMBER
HI VISTA (1968)	2464.231	CS MON 14IN DN @ C/L INT 100TH ST E + AVE J-8 MKD (1/4 SEC COR 20-21 R-10-W T-7-N)	BL 548
HI VISTA (1968)	2478.508	CS MON 12IN DN @ C/L INT 100TH ST E + AVE K MKD (T7N R10W 20-21-28-29 SEC COR)	BL 549
HI VISTA (1968)	2480.127	L+T CONC PORCH TO HSE NO 9861 40FT N + 45FT W C/L INT 100TH ST E + AVE K	BL 550
HI VISTA (1968)	2474.759	CS MON (S EDGE) IN WELL 18IN DN @ C/L INT AVE K + 95TH ST E PROP MKD (1/4 COR 20 29 T7N R10W)	BL 552
BASELINE (1965)	2606.353	USGS MON IN TOP OF 6IN CONC POST FLUSH 26FT E C/L 180TH ST E (DIRT RD) 32FT S C/L AVE M (DIRT RD) 60FT SE WHITE CONC SIGN POST MKD (LS 18 1929 RESET 1941)	BL 1064
BASELINE (1965)	2593.968	CSBM MON 6IN UP 30FT N C/L AVE M + 34FT W C/L 175TH ST E 39FT SW 2IN IP WITH CS TAG 12IN UP MKD (BM 106-89 1959)	BL 1065
BASELINE (1965)	2584.501	CSBM MON 6IN UP ON SW COR AVE M + 170TH ST E 124FT S + 23FT W C/L INT MKD (BM 106-90 1959)	BL 1066
HI VISTA (1968)	2581.226	CS MON IN WELL 10IN DN ON C/L 170TH ST E @ DIRT RD (AVE L-8) TO LINDA MIA RANCH NO 42200 47FT NE PP 423645E MKD (1/4 COR 33 34 T7N R9W)	BL 1067
HI VISTA (1968)	2578.449	CS MON IN WELL 10IN DN @ C/L INT 170TH ST E + AVE L (DIRT) 64FT SE PP 423633E MKD (SEC COR 33 34 27 28 R9W T7N)	BL 1068
HI VISTA (1968)	2561.850	USGS MON 6IN UP 27FT S C/L AVE K-8 + 250FT W C/L 170TH ST E 7FT SW PP 423619E MKD (LS 17 1929)	BL 1069
HI VISTA (1968)	2551.764	CSBM MON 6IN UP 19FT S C/L AVE K-8 + 0.5MI W 170TH ST E MKD (BM 106-94 1959)	BL 1070
HI VISTA (1968)	2538.863	CSBM MON 6IN UP 18FT W C/L 160TH ST E + 550FT N AVE K-8 3FT S PP 423723E MKD (BM 106-95 1959)	BL 1071
HI VISTA (1968)	2534.117	CSBM MON 6IN UP 23FT N C/L AVE K + 205FT W C/L 160TH ST E 5FT N PP 423712E MKD (BM 106-96 1959)	BL 1072
HI VISTA (1968)	2526.032	CSBM MON 6IN UP 23FT N C/L AVE K + 16FT E C/L 155TH ST E 5FT N PP K7746Y 74FT SE WATER WELL SHAFT MKD (BM 106-97 1959)	BL 1073
HI VISTA (1968)	2516.755	CSBM MON 6IN UP 17FT E C/L 150TH ST E + 83FT N C/L AVE K 10FT S PP 274145E MKD (BM 106-98 1959)	BL 1074
BASELINE (1965)	2443.302	CSBM MON 4IN UP NR SW COR EDISON PIUTE SUBSTA 45FT N C/L AVE J + 40FT E C/L 90TH ST E MKD (BM 107-24 1961)	BL 1075A
HI VISTA (1968)	2461.978	RD BR CAP MON IN WELL W/COVER 5FT E PP NO K8333Y 30FT N C/L AVE J + 195FT W C/L 105TH ST E (PROP) 2IN IP WITNESS 3FT UP 2FT N	BL 1076
HI VISTA (1968)	2458.810	RD BR CAP MON IN WELL W/COVER 5FT W PP NO K8335Y 30FT N C/L AVE J + 200FT E C/L 105TH ST E (PROP) 2IN IP WITNESS 3FT UP 2FT N	BL 1077
HI VISTA (1968)	2452.914	CS MON 15IN DN @ C/L INT AVE J + 110TH ST E MKD (15 16 21 22 T7N R10W)	BL 1078
HI VISTA (1968)	2454.039	RD MON IN WELL W/COVER 72FT N C/L AVE J + 30FT E C/L 110TH ST E 2IN IP WITNESS 3FT UP 2FT S	BL 1079

QUAD-YEAR	ELEV	DESCRIPTION (INCLUDE QUAD AND YEAR IN DESCRIPTION)	BM NUMBER
HI VISTA (1968)	2459.807	RD MON IN WELL W/COVER 4FT E PP NO 918158E 30FT N C/L AVE J + 105FT W C/L 115TH ST E (PROP) 2IN IP WITNESS 3FT UP 2FT N	BL 1080
HI VISTA (1968)	2458.176	RD MON IN WELL W/COVER 4FT W PP NO 918590E 30FT N C/L AVE J + 190FT E C/L 115TH ST E (PROP) 2IN IP WITNESS 3FT UP 2FT N	BL 1081
HI VISTA (1968)	2459.460	RD MON IN WELL 13FT E PP NO 918598E 30FT N C/L AVE J + 66FT W C/L 120TH ST E (PROP) 2IN IP WITNESS 3FT UP 2FT N	BL 1082
HI VISTA (1968)	2457.777	RD MON IN WELL W/COVER 5FT W PP NO 1048308E 30FT N C/L AVE J + 195FT E C/L 120TH ST E (PROP) 2IN IP WITNESS 3FT UP 2FT N	BL 1083
HI VISTA (1968)	2462.418	RD MON IN WELL W/COVER 7FT E PP NO 1014830E 30FT N C/L AVE J + 180FT W C/L 125TH ST E 2IN IP WITNESS 3FT UP 2FT N	BL 1084
HI VISTA (1968)	2463.261	RD MON IN WELL W/COVER 7FT W PP NO 1014867E 30FT N C/L AVE J + 145FT E C/L 125TH ST E 2IN IP MKR 3FT UP 2FT N	BL 1085
HI VISTA (1968)	2465.890	RD MON IN WELL W/COVER 5FT W PP NO 409086E 20FT N C/L AVE J + 210FT W C/L 130TH ST E 2IN IP WITNESS 3FT UP 2FT N	BL 1086
HI VISTA (1968)	2465.912	CS MON IN WELL @ C/L INT AVE J + 130TH ST E MKD (13 14 23 24 T7N R10W)	BL 1087
HI VISTA (1968)	2473.666	CS MON IN WELL @ C/L INT AVE J + 135TH ST E MKD (1/4 COR 13 24 T7N R10W)	BL 1088
HI VISTA (1968)	2477.334	RD MON IN WELL W/COVER 5FT NE PP NO 1014874E 35FT N C/L AVE J + 360FT E 135TH ST E 2IN IP WITNESS 3FT UP 2FT N	BL 1089
HI VISTA (1968)	2484.368	CS MON IN WELL @ C/L INT AVE J + 140TH ST E MKD (13 24 18 19 T7N R10W R9W)	BL 1090
HI VISTA (1968)	2487.319	CSBM MON 6IN UP 35FT W C/L 140TH ST E + 90FT N C/L AVE J MKD (BM 106-102 1959)	BL 1091
HI VISTA (1968)	2488.655	CSBM MON 6IN UP 39FT S C/L AVE J NR C/L 145TH ST E 57FT S PP 390499E MKD (BM 106-101 1959)	BL 1092
HI VISTA (1968)	2490.861	CSBM MON 6IN UP 18FT E C/L 150TH ST E + 39FT S C/L AVE J MKD (BM 106-100 1959)	BL 1093
HI VISTA (1968)	2503.861	CSBM MON 6IN UP 19FT E C/L 150TH ST E @ DIRT RD 0.5MI N AVE K 4FT E PP 951510E MKD (BM 106-99 1959)	BL 1094
HI VISTA (1968)	2516.465	L+T SE COR OF 3FT SQ CONC SLAB 52FT W C/L 150TH ST E + 140FT N C/L AVE K	BL 1095
HI VISTA (1968)	2529.639	RDBM MON IN WELL W/COVER 35FT E C/L 150TH ST E + 100FT N C/L AVE K-8 (UNIMPROVED) 2IN IP WITNESS 3FT UP 2FT E	BL 1096
HI VISTA (1968)	2530.993	RDBM MON IN WELL W/COVER 35FT E C/L 150TH ST E + 100FT S C/L AVE K-8 (UNIMPROVED) 2IN IP WITNESS 3FT UP 2FT E	BL 1097
HI VISTA (1968)	2548.232	RDBM MON IN WELL W/COVER 35FT E C/L 150TH ST E + 100FT N C/L AVE L (UNIMPROVED) 2IN IP WITNESS 3FT UP 2FT E	BL 1098



QUAD-YEAR	ELEV	DESCRIPTION (INCLUDE QUAD AND YEAR IN DESCRIPTION)	BM NUMBER
HI VISTA (1968)	2547.300	CS MON IN WELL @ C/L INT 150TH ST E + AVE L MKD (SEC COR 29 30 31 32 T7N R9W)	BL 1099
HI VISTA (1968)	2560.820	CS MON IN WELL @ C/L INT 150TH ST E + AVE L-8 MKD (1/4 COR 31 32 T7N R9W)	BL 1101
BASELINE (1965)	2575.451	CS MON IN WELL 8IN DN @ C/L INT AVE M + 150TH ST E MKD (SEC COR 31 32 5 6 T6N T7N R9W)	BL 1102
BASELINE (1965)	2576.140	RDBM MON IN WELL @ SE COR AVE M + 150TH ST E 193FT S + 28FT E C/L INT 2IN IP MKR 3FT UP 2FT N	BL 1103
HI VISTA (1968)	2469.795	CS MON IN WELL 12IN DN @ C/L INT 140TH ST E + PROP AVE I-8 105FT S PP 1014890E MKD (1/4 COR 13 18 R9W T7N)	BL 1141
HI VISTA (1968)	2469.061	CSBM MON 6IN UP 32FT W C/L 140TH ST E + 690FT N AVE I-8 4FT S PP 1014882E MKD (BM 106-103 1959)	BL 1142
HI VISTA (1968)	2459.267	CS MON IN WELL 21IN DN @ C/L INT 140TH ST E + FUT AVE I MKD (SEC COR 12 13 17 18 R10W T7N)	BL 1143
HI VISTA (1968)	2449.596	CS MON IN WELL 9IN DN @ C/L INT 140TH ST E + AVE H-8 225FT S OF S SIDE PROD HSE 45615 MKD (1/4 COR 12 7 R10W R9W T7N)	BL 1144
HI VISTA (1968)	2442.024	CSBM MON 6IN UP @ NW COR 140TH ST E + AVE H 33FT W + 68FT N C/L INT MKD (BM 106-106 1959)	BL 1145
HI VISTA (1968)	2440.539	CS MON IN WELL 20IN DN @ C/L INT 140TH ST E + AVE H MKD (SEC COR 1 6 12 7 R10W R9W T7N)	BL 1146
HI VISTA (1968)	2449.226	CS MON IN WELL 21IN DN ON C/L 140TH ST E 10FT S C/L AVE G-8 65FT SE PP 767477E + 80FT SW PP 878100E MKD (1/4 COR 1 6 R10W R9W T7N)	BL 1147
HI VISTA (1968)	2451.499	CSBM MON 6IN UP ON NW COR 140TH ST E + AVE G 60FT W + 32FT N C/L INT MKD (BM 106-108 1959)	BL 1148
HI VISTA (1968)	2450.746	CS MON IN WELL 24IN DN @ C/L INT 140TH ST E + AVE G MKD (SEC COR 36 31 1 6 T7N T8N R9W R10W)	BL 1149
HI VISTA (1968)	2460.671	CSBM MON 6IN UP 49FT E C/L 140TH ST E + 31FT N C/L FUT AVE F MKD (BM 106-110 1959)	BL 1151
HI VISTA (1968)	2458.204	CS MON IN WELL 10IN DN @ C/L INT 140TH ST E + FUT AVE F 71FT NW 2IN IP + PLUG 6IN UP MKD (SEC COR 25 30 31 36 R10W R9W T8N)	BL 1152
HI VISTA (1968)	2424.362	CSBM MON 6IN UP 48FT W C/L 140TH ST E + 31FT N C/L AVE E MKD (BM 106-112 1959)	BL 1154
HI VISTA (1968)	2424.301	CS MON IN WELL 6IN DN @ C/L INT 140TH ST E + AVE E MKD (SEC COR 19 24 25 30 R10W R9W T8N)	BL 1155
HI VISTA (1968)	2372.023	CSBM MON 6IN UP 32FT S C/L AVE E + 13FT W C/L 135TH ST E 14FT S PP 759331E MKD (BM 106-113 1959)	BL 1156
HI VISTA (1968)	2367.657	CSBM MON 6IN UP 29FT S C/L AVE E + 36FT W C/L 130TH ST E 33FT W PP 759325E MKD (BM 106-114 1959)	BL 1157
HI VISTA (1968)	2363.345	CS MON IN WELL 14IN DN @ C/L INT AVE E + 125TH ST E 22FT N PP 441562E MKD (1/4 COR 23 26 R10W T8N)	BL 1158
HI VISTA (1968)	2357.813	CSBM MON 6IN UP 23FT N C/L AVE E + 196FT W C/L 120TH ST E 3FT E PP 390066E MKD (BM 106-116 1959)	BL 1159

QUAD-YEAR	ELEV	DESCRIPTION (INCLUDE QUAD AND YEAR IN DESCRIPTION)	BM NUMBER
HI VISTA (1968)	2362.028	CSBM MON 6IN UP 28FT N C/L AVE E + 259FT W C/L 115TH ST E 51FT E CTR DIRT RD TO HSE 11337 4FT N PP 390054E MKD (BM 106-117 1959)	BL 1160
HI VISTA (1968)	2356.838	CSBM MON 6IN UP 24FT N C/L AVE E + 48FT E C/L 110TH ST E 3FT N PP 381243E MKD (BM 106-118 1959)	BL 1161
HI VISTA (1968)	2353.387	CSBM MON 6IN UP 25FT S C/L AVE E + 38FT E C/L 105TH ST E 3FT S PP 381231E MKD (BM 106-119 1959)	BL 1162
HI VISTA (1968)	2349.639	CSBM MON 6IN UP 48FT N C/L AVE E + 22FT E C/L 100TH ST E 14FT S TP K2318Y MKD (BM 106-120 1959)	BL 1163
HI VISTA (1968)	2343.915	CSBM MON 6IN UP 21FT S C/L AVE E + 270FT W C/L 95TH ST E MKD (BM 106-121 1959)	BL 1164
BASELINE (1965)	2342.906	CSBM MON 6IN UP 32FT E C/L 90TH ST E + 46FT S C/L AVE E 7FT SE PP 538296E MKD (BM 106-122 1959)	BL 1165A
BASELINE (1965)	2347.985	RDBM TAG CONC FOOTING OF SUPPORT @ NW COR HAY SHED 50FT E C/L 90TH ST E + 50FT S C/L AVE E-8	BL 1167A
BASELINE (1965)	2356.764	CSBM MON 2IN UP 30FT N C/L AVE F + 77FT E C/L 90TH ST E MKD (BM 116-6 1961)	BL 1168A
BASELINE (1965)	2366.411	CSBM MON 2IN UP 80FT N C/L AVE F-8 + 30FT E C/L 90TH ST E MKD (BM 116-5 1961)	BL 1169A
BASELINE (1965)	2375.974	CSBM MON 2IN UP 27FT W C/L 90TH ST E + 70FT S C/L AVE G MKD (BM 116-4 1961)	BL 1170A
BASELINE (1965)	2385.417	CSBM MON 4IN UP 80FT E C/L 90TH ST E + 20FT S C/L AVE G-8 25FT W PP 951530E MKD (BM 116-3 1961)	BL 1171A
BASELINE (1965)	2396.705	CSBM MON 4IN UP 35FT N + 115FT E C/L INT AVE H + 90TH ST E MKD (BM 116-2 1961)	BL 1172A
BASELINE (1965)	2404.074	CSBM MON 3IN UP 30FT E C/L 90TH ST E + 155FT N C/L AVE H-8 MKD (BM 116-1 1961)	BL 1173A
BASELINE (1965)	2414.984	CSBM MON 4IN UP 68FT W C/L 90TH ST E + 30FT S C/L AVE I 2FT E PP 955497E MKD (BM 107-26 1961)	BL 1174A
BASELINE (1965)	2425.699	CSBM MON 4IN UP 35FT E C/L 90TH ST E + 550FT N AVE I-8 3FT E PP 771405E MKD (BM 107-25 1961)	BL 1175A
BASELINE (1965)	2456.666	CSBM MON 4IN UP 90FT W C/L 90TH ST E + 29FT S C/L AVE J-8 1FT N OF N P/L GLENDALE AUTO PARTS YD MKD (BM 107-23 1961)	BL 1177A
BASELINE (1965)	2475.491	CSBM MON 27FT W C/L 90TH ST E + 60FT S C/L AVE K 2FT W TP K9248Y MKD (BM 107-22 1961)	BL 1178A
BASELINE (1965)	2490.521	CSBM MON 3IN UP 33FT E C/L 90TH ST E + 45FT S C/L AVE K-8 3FT E PP 771366E MKD (BM 107-21 1961)	BL 1179A
BASELINE (1965)	2498.235	CSBM MON 60FT W C/L 90TH ST E + 30FT S C/L AVE L 3FT S PP 800334E MKD (BM 107-20 1961)	BL 1180A
BASELINE (1965)	2513.407	CSBM MON 34FT E C/L 90TH ST E + 35FT N C/L AVE L-8 3FT S PP 771347E MKD (BM 107-19 1961)	BL 1181A

QUAD-YEAR	ELEV	DESCRIPTION (INCLUDE QUAD AND YEAR IN DESCRIPTION)	BM NUMBER
BASELINE (1965)	2526.141	CSBM MON 4IN UP 36FT N C/L AVE M + 36FT E C/L 90TH ST E MKD (BM 107-18 1961)	BL 1182A
BASELINE (1965)	2530.176	CS MON IN WELL 36IN DN @ C/L INT AVE M + FUT 95TH ST E MKD (1/4 COR 32 5 T6N T7N R10W)	BL 2036A
BASELINE (1965)	2533.031	CSBM MON 4IN UP 38FT S C/L AVE M + 89FT E C/L 95TH ST E BET PP 1001560E + 1001561E MKD (BM 122-1 1961) 2IN IP MKR 3FT UP 2FT N	BL 2037
BASELINE (1965)	2539.330	CS MON 8IN DN IN WELL @ C/L INT AVE M + 100TH ST E MKD (SEC COR 32 33 5 4 T6N T7N R10W)	BL 2038
BASELINE (1965)	2541.484	CSBM MON 4IN UP @ SE COR AVE M + 100TH ST E 26FT S + 75FT E C/L INT MKD (BM 122-2 1961) 2IN IP MKR 3FT UP 2FT N	BL 2039A
BASELINE (1965)	2547.132	CSBM MON 4IN UP @ SE COR AVE M + 105TH ST E 66FT E + 28FT S C/L INT MKD (BM 122-3 1961) 2IN IP MKR 3FT UP 2FT N	BL 2040
BASELINE (1965)	2550.037	CSBM MON 4IN UP @ SE COR AVE M + 110TH ST E 48FT S + 52FT E C/L INT MKD (BM 122-4 1961) 2IN IP MKR 3FT UP 2FT W	BL 2041
BASELINE (1965)	2549.245	RDBM TAG IN 4FT SQ CONC SLAB OF ABANDONED FARM HSE 210FT N C/L AVE M (DIRT RD) + 650FT E FUT 115TH ST E	BL 2042
BASELINE (1965)	2546.672	CS MON FLUSH @ FUT C/L INT AVE M + 120TH ST E MKD (SEC COR 34 35 3 2 T6N T7N R10W) 2IN IP MKR 3FT UP 2FT E	BL 2043
BASELINE (1965)	2537.774	CS MON 6IN UP @ FUT C/L INT AVE M + 125TH ST E MKD (1/4 COR 2 35 T6N T7N R10W)	BL 2044
BASELINE (1965)	2537.915	CS MON 6IN UP @ FUT C/L INT AVE M + 130TH ST E MKD (SEC COR 35 36 2 1 T6N T7N R10W)	BL 2045
BASELINE (1965)	2551.888	CS MON 6IN UP @ FUT C/L INT AVE M + 135TH ST E MKD (1/4 SEC COR 36 1 T6N T7N R10W)	BL 2046
BASELINE (1965)	2655.044	CS MON 10IN UP @ FUT C/L INT AVE M + 140TH ST E MKD (SEC COR 1 6 31 36 T6N T7N R10W R9W)	BL 2047
BASELINE (1965)	2688.857	2IN IP WITH CUT SPK IN CONC 6IN UP @ 1/4 COR 31 6 R9W T6N T7N (FUT C/L INT AVE M + 145TH ST E)	BL 2048
BASELINE (1965)	2575.722	CSBM MON 4IN UP ON NE COR AVE M + 150TH ST E 53FT N + 33FT E C/L INT MKD (BM 115-11 1961)	BL 2049
BASELINE (1965)	2575.756	CS MON IN WELL @ C/L INT AVE M + FUT 155TH ST E MKD (1/4 SEC COR 32 5 T6N T7N R9W)	BL 2050
BASELINE (1965)	2579.384	2IN IP CONC PLUG + NAIL 8IN UP ON NE COR AVE M + FUT 155TH ST E 50FT N + 50FT E C/L INT	BL 2051
BASELINE (1965)	2577.105	2IN IP CONC PLUG + NAIL 8IN UP ON SW COR AVE M + FUT 160TH ST E 50FT S + 50FT W C/L INT	BL 2052
BASELINE (1965)	2577.175	2IN IP CONC PLUG + NAIL 8IN UP ON NE COR AVE M + FUT 160TH ST E 50FT N + 50FT E C/L INT	BL 2053
BASELINE (1965)	2577.904	2IN IP CONC PLUG + NAIL FLUSH ON SW COR AVE M + FUT 165TH ST E 50FT S + 50FT W C/L INT	BL 2054A
BASELINE (1965)	2578.137	2IN IP CONC PLUG + NAIL 6IN UP ON NE COR AVE M + FUT 165TH ST E 50FT N + 50FT E C/L INT	BL 2055

