

COUNTY OF LOS ANGELES
ROAD DEPARTMENT

PRECISE
BENCH MARK LIST



LANCASTER QUAD
EAST
1975 ADJUSTMENT

(1977 RE-ADJUSTMENT)

N O T E

In lieu of a complete readjustment of this Quad in 1977, alterations were applied to 1975 elevations in high subsidence pockets. These changes are reflected by the "As and Ds" following the bench numbers i.e. CL 2240 A and CL 2241 D. The "A" benches are compatible with the 1975 adjustment of the unlettered benches and the "D" benches. The "D" benches are compatible with the closest "A" bench and other "D" benches but not the unlettered benches.

P R E F A C E

The Road Department level net is composed of more than 2,000 miles of levels supporting in excess of 12,000 bench marks. In 1975, a major readjustment of the net was undertaken. To emphasize the complete break with previous elevations, the BY,BG & BL series bench marks have been relabeled CY,CG & CL, respectively.

To facilitate the adjustment, indexing, and distribution of adjusted values of the net, the County territory is divided into 34 quads or areas. For identification purposes each quad is given a name, viz., "Rosemead," "La Mirada," "Santa Fe," etc. When bench marks and elevations in the Road Department net are used, the name of the quad in which the bench mark is located and the date of the adjustment of the elevation must be included in the bench mark description, e.g.,

CG 6234 --L&BN IN CONC HDWL OF DRAIN PIPE UNDER DR 218 FT
NE&18 FT SE C/L INT GRAND AVE & CAMERON AVE MKD (BM)
(COVINA -1975) ELEV. 696.238

Experience indicates that this general adjustment will, for the most part, remain sound for the next 10 years. Updating constrained adjustments will be made in 5 years. It is expected that these updating adjustments will be in the nature of a few hundredths of a foot. When a quad is readjustment, new elevation lists will be published and the date of the readjustment will replace the "1975" at the end of the bench mark description. Two bench marks with different adjustment dates will not normally agree with each other.

The basic accuracy of the net is reflected by an indicated field probable error of plus or minus 0.012 foot per mile of leveling as determined from over 600 conditions of closure. However, many years experience in vertical control in the greater Los Angeles basin and Antelope Valley indicate that because of varying degrees of subsidence and heaving, the true datum is recovered only by obtaining substantial agreement of a number of bench marks.

The users of this net are invited to assist in its maintenance by notifying this Department of cases of obliteration, apparent mistakes in descriptions or elevations, and proven disturbance of bench marks.

Drive or Driveway
 --- Machine at Floor
 E/O --- DATUM U. S. Coast and Geodetic Survey Sea Level Datum Monument
 of 1929, through the medium of the Los Angeles
 ECR --- End of County Engineer Precise Level Net. --- North of

ABBREVIATIONS USED IN BENCH MARK LISTINGS

ABUT - - - - -	Abutment	EC - - - - -	End of Curve
ALG - - - - -	Along	ENT - - - - -	Entrance
ANG PT - - - - -	Angle Point	FL - - - - -	Floor
B/W - - - - -	Back of Walk	FTG - - - - -	Footing
BCR - - - - -	Beginning of Curb Return	FRWY - - - - -	Freeway
BC - - - - -	Beginning of Curve	F/W - - - - -	Front of Walk
BLDG - - - - -	Building	GAR - - - - -	Garage
EM - - - - -	Bench Mark	HDWL - - - - -	Headwall
BT SPK - - - - -	Boat or Bolt Spike	HSE - - - - -	House
BR CAP - - - - -	Brass or Bronze Cap	HWY - - - - -	Highway
C B - - - - -	Catch Basin	INT - - - - -	Intersection
CTR - - - - -	Center	IP - - - - -	Iron Pipe
C/L - - - - -	Center Line	LT - - - - -	Left
C/L INT - - - - -	Center Line Intersection	LACE - - - - -	L. A. City Engineer
C/L PROD - - - - -	Center Line Produced	LACS - - - - -	L. A. Co. Engineer
CONC - - - - -	Concrete	L AFC - - - - -	L. A. Co. Flood Control
COR - - - - -	Corner	L&BN - - - - -	Lead and Bench Nail
COE - - - - -	Corps of Engineers	L&BR - - - - -	Lead and Brad
CULV - - - - -	Culvert	L&N - - - - -	Lead and Nail
CYN - - - - -	Canyon	L&SPK - - - - -	Lead and Spike
CB - - - - -	Curb	L&T - - - - -	Lead and Tack
CS MON - - - - -	Co. Engineer Monument	MCR - - - - -	Middle of Curb Return
CT SPK - - - - -	Cut Spike	MKD - - - - -	Marked
DR - - - - -	Drive or Driveway	MC - - - - -	Middle of Curve
E/O - - - - -	East of	MON - - - - -	Monument
W/O - - - - -	West of	N/O - - - - -	North of
ECR - - - - -	End of Curb Return		

ABBREVIATIONS USED IN BENCH MARK LISTINGS . . . CONTINUED

NR - - - - - Near
OPP - - - - - Opposite
PI - - - - - Point of Intersection
PK&W - - - - - PK Nail and Washer
P/L - - - - - Property Line
POST - - - - - Point on Semi-Tangent
PP - - - - - Power Pole
PVMT - - - - - Pavement
PROD - - - - - Produced
RD - - - - - Road
RDEM - - - - - Road Dept. Bench Mark
RDEM TAG - - - - - Road Dept. Bench Mark Tag
RR - - - - - Railroad
RT - - - - - Right
R/W - - - - - Right of Way
SDMH - - - - - Storm Drain Manhole
SMH - - - - - Sewer Manhole
SPK - - - - - Spike
ST&W - - - - - Spike Tin and Washer
S/O - - - - - South of
TP - - - - - Telephone Pole
USC&GS - - - - - U. S. Coast and Geodetic Survey
USGS - - - - - U. S. Geological Survey
WK - - - - - Walk
W/O - - - - - West of

K E R N

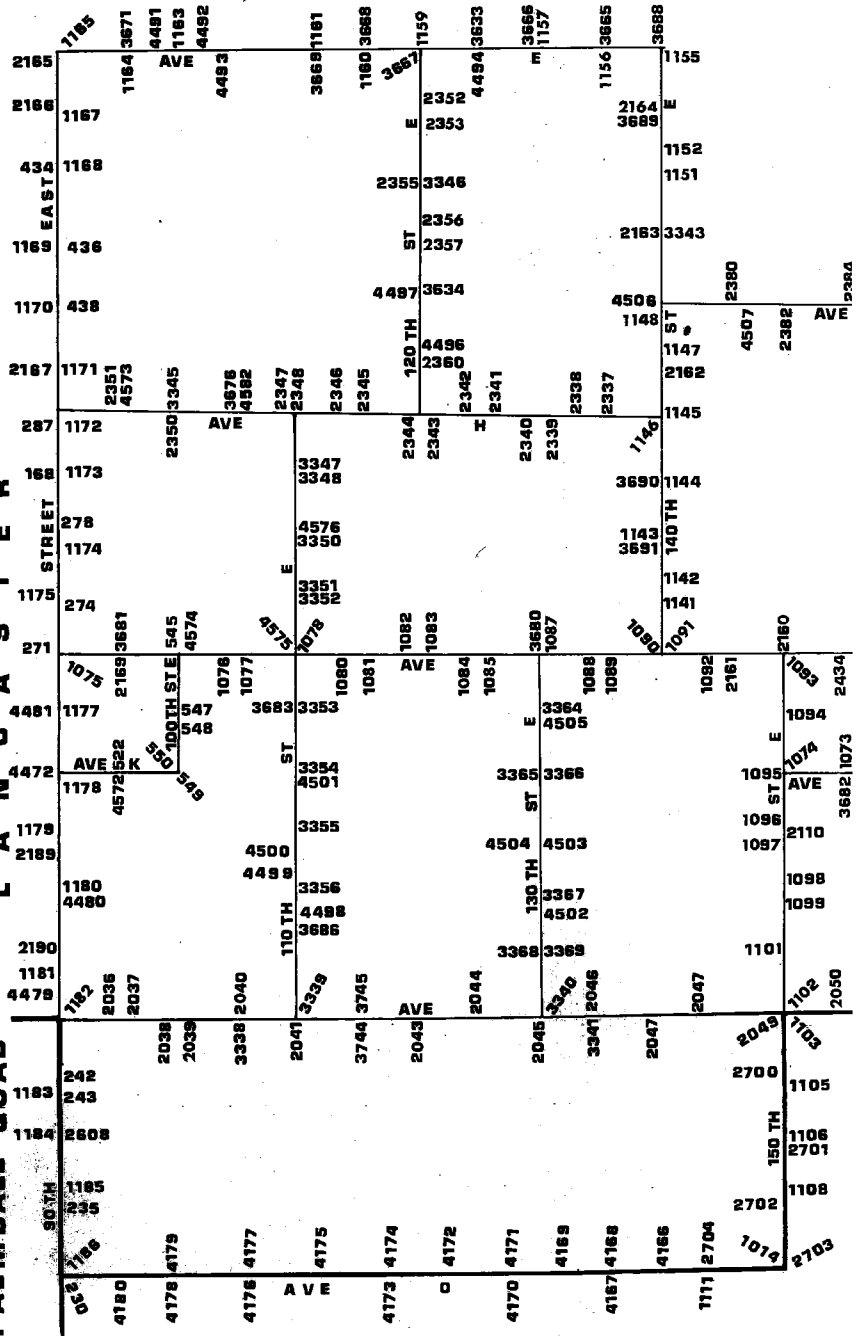
LANCAST

EAST

G U A D

L A N C A S T E R

P A L M D A L E Q U A D



QUAD-YEAR	ELEV	DESCRIPTION (INCLUDE QUAD AND YEAR IN DESCRIPTION)	BM NUMBER
BASELINE (1973)	2575.893	RDBM TAG CONC FTG OF 8FT CHAIN LINK FENCE AROUND CL EDISON SUB STA 30FT S & 30FT E C/L INT OF 90TH ST E & AVE O	230
BASELINE (1973)	2560.281	CS MON IN WELL 10IN DN @ C/L INT 90TH ST E & AVE CL N-8 MKD (1/4 COR 7 8 T6N R10W)	235
BASELINE (1973)	2535.607	CS MON IN WELL 18IN DN @ C/L INT 90TH ST E & AVE CL M-8 MKD (1/4 COR 5 6 T6N R10W)	242
BASELINE (1973)	2536.511	2IN IP (W EDGE) 12IN UP ON NW COR 90TH ST E & AVE M-8 40FT N & 40FT W C/L INT	CL 243
LANCASTR (1975)	2441.061	CS MON IN WELL 15IN DN @ C/L INT 90TH ST E & AVE J MKD (CO SURV 18 17 19 20 T7N R10W 1926) USE S EDGE	CL 2710
LANCASTR (1975)	2423.929	CS MON IN WELL 20IN DN @ C/L INT 90TH ST E & AVE I-8 MKD (CO SURV 1/4 SEC COR 17 18 T7N R10W) USE S EDGE	CL 2740
LANCASTR (1975)	2411.406	CSMON IN WELL 12IN DN @ C/L INT 90TH ST E & AVE I MKD (CO SURV 7 8 17 18 T7N R10W) USE N EDGE	CL 2780
LANCASTR (1975)	2392.012	CS MON IN WELL 19IN DN @ C/L INT 90TH ST E & AVE H MKD (CO SURV 5 6 7 8 T7N R10W)	CL 286
LANCASTR (1975)	2392.965	RDBM TAG @ CTR OF OLD CONC BASE OF MTR MOUNT 40FT W C/L 90TH ST E & 100FT N C/L AVE H	CL 2870
LANCASTR (1975)	2354.262	L&T IN S EDGE CONC SLAB UNDER WATER TOWER 45FT-N & 95FT W C/L INT 90TH ST E & AVE F MKD (SLBM)	CL 433
LANCASTR (1975)	2353.572	CS MON 16IN DN @ C/L INT 90TH ST E & AVE F MKD (CO SURV 30 29 31 32 R10W T8N RE 2177) E EDGE	CL 4340
LANCASTR (1975)	2364.074	2IN IP CONC PLUG & BT SPK IN WELL 15IN DN @ C/L INT 90TH ST E & AVE F-8 (USE SPK)	CL 4360
LANCASTR (1975)	2373.241	RD MON IN WELL WITH CONC COLLAR @ SE COR 90TH ST E & AVE G 30FT E & 40FT S C/L INT MKD (1958)	CL 4380
LANCASTR (1975)	2384.265	2IN IP IN CONC W/BR CAP ON C/L AVE G-8 30FT W C/L 90TH ST E MKD (CO SURV W C SEC 6 R10W T7N)	CL 439
LANCASTR (1975)	2450.270	RDBM TAG CONC LID OF FLAT JUNCTION BOX 250FT W C/L 100TH ST E & 36FT N C/L AVE J SE EDGE/ LID	CL 5450
LANCASTR (1975)	2447.384	L&T 2IN DN @ C/L INT AVE J & 100TH ST E	CL 5460

QUAD-YEAR	ELEV	DESCRIPTION (INCLUDE QUAD AND YEAR IN DESCRIPTION)	BM NUMBER
LANCASTR (1975)	2465.906	RDBM TAG CONC PUMP BASE (OLD) 60FT W C/L 100TH ST E & 130FT N C/L AVE J-8	CL 547D
LANCASTR (1975)	2463.494	LACS MON IN WELL 14IN DN @ C/L INT 100TH ST E & AVE J-8 MKD(1/4 COR 20 21 R10W T7N) USE E EDGE	CL 548D
LANCASTR (1975)	2478.164	CS MON 12IN DN @ C/L INT 100TH ST E & AVE K MKD (T7N R10W 20-21-28-29 SEC COR) USE W EDGE	CL 549D
LANCASTR (1975)	2479.759	L&T CONC PORCH TO HSE NO 9861 40FT N & 45FT W C/L INT 100TH ST E & AVE K MKD(BM)	CL 550D
LANCASTR (1975)	2474.429	CS MON (S EDGE) IN WELL 18IN DN @ C/L INT AVE K & 95TH ST E PROP MKD (1/4 COR 20 29 T7N R10W)	CL 552D
BASELINE (1973)	2646.473	RDBM MON IN WELL W/COVER 5FT N PP NO 799921E 38FT N C/L AVE O & 365FT W 150TH ST E 2IN IP WITNESS 3FT UP 2FT N	CL 1014
BASELINE (1973)	2606.235	USC&GS MON IN TOP OF 6IN CONC POST FL 26FT E C/L 180TH ST E (DIRT RD) 32FT S C/L AVE M MKD(L S 18 1929-RESET 1941)	CL 1064
BASELINE (1973)	2593.844	CSBM MON 6IN UP 30FT N C/L AVE M & 34FT W C/L 175TH ST E 39FT SW 2IN IP WITH CS TAG 12IN UP MKD (BM 106-89 1959)	CL 1065
BASELINE (1973)	2584.352	CSBM MON 6IN UP ON SW COR AVE M & 170TH ST E 124FT S & 23FT W C/L INT MKD (BM 106-90 1959)	CL 1066
LANCASTR (1975)	2581.067	CS MON IN WELL 12IN DN @ C/L INT 170TH ST E & AVE L-8 MKD (1/4 COR 33 34 T7N R9W RE 5869)	CL 1067
LANCASTR (1975)	2578.297	CS MON IN WELL 13IN DN @ C/L INT 170TH ST E & AVE L MKD (33 34 27 28 R9W T7N RE 5869)	CL 1068
LANCASTR (1975)	2561.687	USGS MON 6IN UP 27FT S C/L AVE K-8 & 250FT W C/L 170TH ST E 7FT SW PP 423619 MKD (LS 17 1929)	CL 1069
LANCASTR (1975)	2551.606	CSBM MON 6IN UP 19FT S C/L AVE K-8 & 0.5MI W 170TH ST E MKD (BM 106-94 1959)	CL 1070
LANCASTR (1975)	2538.702	CSBM MON 6IN UP 18FT W C/L 160TH ST E & 550FT N AVE K-8 3FT S PP 423723E MKD (BM 106-95 1959)	CL 1071
LANCASTR (1975)	2533.964	CSBM MON 6IN UP 23FT N C/L AVE K & 205FT W C/L 160TH ST E 5FT N PP 423712E MKD (BM 106-96 1959)	CL 1072
LANCASTR (1975)	2525.892	CSBM MON 6IN UP 23FT N C/L AVE K & 16FT E C/L 155TH ST E 5FT N PP K7746Y 74FT SE WATER WELL SHAFT MKD (BM 106-97A 1959) USE W EDGE	CL 1073

QUAD-YEAR	ELEV	DESCRIPTION (INCLUDE QUAD AND YEAR IN DESCRIPTION)	BM NUMBER
LANCASTR (1975)	2516.622	CSBM MON 6 IN UP 83FT N & 17FT E C/L INT 150TH ST E & AVE K MKD (BM 106-98 1959)	CL 1074
LANCASTR (1975)	2441.937	CS BM MON 4IN UP 45FT N & 40FT E C/L INT 90TH ST E & AVE J MKD (BM 107-24 1961)	CL 1075D
LANCASTR (1975)	2460.940	RD BR CAP MON IN WELL W/COVER 5FT E PP NO K8333Y 30FT N C/L AVE J & 195FT W C/L 105TH ST E (PROP) 2IN IP WITNESS 3FT UP 2FT N	CL 1076D
LANCASTR (1975)	2457.723	RD BR CAP MON IN WELL W/COVER 5FT W PP NO K8335Y 30FT N C/L AVE J & 200FT E C/L 105TH ST E (PROP) 2IN IP WITNESS 3FT UP 2FT N	CL 1077D
LANCASTR (1975)	2451.728	CS MON IN WELL 15IN DN @ C/L INT AVE J & 110TH ST E MKD (CO SURV 15 16 21 22 T7N R10W 1925) USE W EDGE	CL 1078D
LANCASTR (1975)	2458.972	RD MON IN WELL W/COVER 4FT E PP NO 918158E 30FT N C/L AVE J & 105FT W C/L 115TH ST E (PROP) 2IN IP WITNESS 3FT UP 2FT N	CL 1080D
LANCASTR (1975)	2457.392	RD MON IN WELL W/COVER 4FT W PP NO 918590E 30FT N C/L AVE J & 190FT E C/L 115TH ST E (PROP) 2IN IP WITNESS 3FT UP 2FT N	CL 1081D
LANCASTR (1975)	2458.985	RD MON IN WELL 13FT E PP NO 918598E 30FT N C/L AVE J & 66FT W C/L 120TH ST E (PROP) 2IN IP WITNESS 3FT UP 2FT N	CL 1082D
LANCASTR (1975)	2457.373	RD MON IN WELL W/COVER 5FT W PP NO 1048308E 30FT N C/L AVE J & 195FT E C/L 120TH ST E (PROP) 2IN IP WITNESS 3FT UP 2FT N	CL 1083D
LANCASTR (1975)	2462.102	RD MON IN WELL W/COVER 7FT E PP NO 1048301E 30FT N C/L AVE J & 180FT W C/L 125TH ST E 2IN IP WITNESS 3FT UP 2FT N	CL 1084A
LANCASTR (1975)	2462.984	RD MON IN WELL W/COVER 7FT W PP NO 1014867E 30FT N C/L AVE J & 145FT E C/L 125TH ST E 2IN IP MKR 3FT UP 2FT N	CL 1085
LANCASTR (1975)	2465.734	CS MON IN WELL @ C/L INT AVE J & 130TH ST E MKD (CO SURV 13 14 23 24 T7N R10W RE 2177) 18IN DN	CL 1087
LANCASTR (1975)	2473.516	CS MON IN WELL @ C/L INT AVE J & 135TH ST E MKD (1/4 COR 13 24 T7N R10W)	CL 1088
LANCASTR (1975)	2477.182	RD MON IN WELL W/COVER 5FT NE PP NO 1014874E 35FT N C/L AVE J & 360FT E 135TH ST E 2IN IP WITNESS 3FT UP 2FT N	CL 1089

QUAD-YEAR	ELEV	DESCRIPTION (INCLUDE QUAD AND YEAR IN DESCRIPTION)	BM NUMBER
LANCASTR (1975)	2484.203	CS MON IN WELL @ C/L INT AVE J & 140TH ST E MKD (13 24 18 19 T7N R10W R9W)	CL 1090
LANCASTR (1975)	2487.133	CSBM MON 6IN UP ON NW COR AVE J & 140TH ST E 90F N & 35FT W C/L INT MKD (BM 106-102 1959)	CL 1091
LANCASTR (1975)	2488.476	CSBM MON 6IN UP 39FT S C/L AVE J NR C/L 145TH ST E 57FT S PP 390499E MKD (BM 106-101 1959)	CL 1092
LANCASTR (1975)	2490.682	CSBM MON 6IN UP ON SE COR AVE J & 150TH ST E 18F E & 39FT S C/L INT (MKD BM 106-100 1959)	CL 1093
LANCASTR (1975)	2503.652	CSBM MON 2IN DN 19FT E C/L 150TH ST E @ DIRT RD 0.5MI N AVE K 4FT E PP 951510E MKD (BM 106-99 1959)	CL 1094
LANCASTR (1975)	2516.331	L&T SE COR OF 3FT SQ CONC SLAB 52FT W C/L 150TH ST E & 140FT N C/L AVE K	CL 1095
LANCASTR (1975)	2529.502	RDBM MON IN WELL 100FT N & 35FT E C/L INT 150TH ST E & AVE K-8 MKD (1960)	CL 1096
LANCASTR (1975)	2530.862	RDBM MON IN WELL 100FT S & 35FT E C/L INT 150TH ST E & AVE K-8 MKD (1960)	CL 1097
LANCASTR (1975)	2548.098	RDBM MON IN WELL 35FT E/O & 100FT N/O C/L INT 150TH ST E & AVE L MKD (1960)	CL 1098
LANCASTR (1975)	2547.170	CS MON IN WELL 20IN DN C/L INT 150TH ST E & AVE L MKD (CO SURV 29 30 31 32 T7N R9W 1927)	CL 1099
LANCASTR (1975)	2560.692	CS MON IN WELL 8IN DN @ C/L INT 150TH ST E & AVE L-8 MKD (1/4 COR 31 32 T7N R9W RE 5869)	CL 1101
BASELINE (1973)	2575.335	CS MON IN WELL 8IN DN @ C/L INT AVE M & 150TH ST E MKD (SEC COR 31 32 5 6 T6N T7N R9W)	CL 1102
BASELINE (1973)	2576.019	RDBM MON IN WELL 193FT S & 28FT E C/L INT AVE M & 150TH ST E MKD (1960)	CL 1103
BASELINE (1973)	2587.119	L&T IN CONC DRWY @ GATE TO FARM HSE 50FT N C/L AVE M-8 (DIRT RD) & 360FT E C/L 150TH ST E 1FT E/O W END OF CONC	CL 1105
BASELINE (1973)	2602.819	RDBM MON IN WELL W/COVER 5FT NE PP NO X1181E 25FT E C/L 150TH ST E & 270FT N AVE N (DIRT RD) 2IN IP WITNESS 3FT UP 2FT E	CL 1106
BASELINE (1973)	2614.562	RDBM MON IN WELL W/COVER 5FT SE PP NO 799849E 25FT E C/L 150TH ST E & 175FT N C/L AVE N-8 (UNIMPROVED) 2IN IP WITNESS 3FT UP 2FT E	CL 1108

QUAD-YEAR	ELEV	DESCRIPTION (INCLUDE QUAD AND YEAR IN DESCRIPTION)	BM NUMBER
BASELINE (1973)	2647.844	L&T IN CONC STANDPIPE 35FT N C/L AVE D & 17FT W C/L 145TH ST E	CL 1111
LANCASTR (1975)	2469.636	CS MON IN WELL 12IN DN @ C/L INT 140TH ST E & PROP AVE I-8 105FT S PP 1014890E MKD (1/4 COR 13 18 R9W T7N)	CL 1141
LANCASTR (1975)	2468.912	CSBM MON 6IN UP 32FT W C/L 140TH ST E & 690FT N AVE I-8 4FT S PP 1014882E MKD (BM 106-103 1959)	CL 1142
LANCASTR (1975)	2459.133	CS MON IN WELL 21IN DN @ C/L INT 140TH ST E & FUT AVE I MKD (SEC COR 12 13 17 18 R10W T7N) USE W EDGE	CL 1143
LANCASTR (1975)	2449.479	CS MON IN WELL 9IN DN @ C/L INT 140TH ST E & AVE H-8 225FT S OF S SIDE PROD HSE 45615 MKD (1/4 COR 12 7 R10W R9W T7N)	CL 1144
LANCASTR (1975)	2441.892	CSBM MON 6IN UP @ NW COR 140TH ST E & AVE H 33FT W & 68FT N C/L INT MKD (BM 106-106 1959)	CL 1145
LANCASTR (1975)	2440.410	CS MON IN WELL 20IN DN @ C/L INT 140TH ST E & AVE H MKD (SEC COR 1 6 12 7 R10W R9W T7N)	CL 1146
LANCASTR (1975)	2449.129	CS MON IN WELL 21IN DN ON C/L 140TH ST E 10FT S C/L AVE G-8 65FT SE PP 767477E & 80FT SW PP 878100E MKD (1/4 COR 1 6 R10W R9W T7N)	CL 1147
LANCASTR (1975)	2451.398	CSBM MON 4IN DN ON NW COR 140TH ST E & AVE G 60FT W & 32FT N C/L INT MKD (BM 106-108 1959)	CL 1148
LANCASTR (1975)	2450.657	CS MON IN WELL 24IN DN @ C/L INT 140TH ST E & AVE G MKD (SEC COR 36 31 1 6 T7N T8N R9W R10W)	CL 1149
LANCASTR (1975)	2460.569	CSBM MON 6IN UP 49FT E C/L 140TH ST E & 31FT N C/L FUT AVE F MKD (BM 106-110 1959)	CL 1151
LANCASTR (1975)	2458.107	CS MON IN WELL 10IN DN @ C/L INT 140TH ST E & FUT AVE F 71FT NW 2IN IP & PLUG 6IN UP MKD (SEC COR 25 30 31 36 R10W R9W T8N)	CL 1152
LANCASTR (1975)	2424.212	CS MON IN WELL 6IN DN @ C/L INT 140TH ST E & AVE E MKD (CO SURV 19 24 25 30 R10W R9W T8N) USE S EDGE	CL 1155
LANCASTR (1975)	2371.877	CSBM MON FL 45FT S C/L INT AVE E & 135TH ST E MKD (BM 106-113 1959)	CL 1156
LANCASTR (1975)	2367.437	CSBM MON FL 29FT S & 36FT W C/L INT AVE E & 130TH ST E MKD (BM 106-114 1959)	CL 1157D

QUAD-YEAR	ELEV	DESCRIPTION (INCLUDE QUAD AND YEAR IN DESCRIPTION)	BM NUMBER
LANCASTR (1975)	2357.147	CSBM MON 16IN DN 25FT N & 196FT W C/L INT AVE E & 120TH ST E MKD (106-116 1959)	CL 1159D
LANCASTR (1975)	2361.340	CSBM MON 6IN UP 28FT N C/L AVE E & 259FT W C/L 115TH ST E 51FT E CTR DIRT RD TO HSE 11337 MKD (BM 106-117 1959)	CL 1160D
LANCASTR (1975)	2356.039	CSBM MON DN 6IN 24FT N & 3FT E/O C/L INT AVE E & 110TH ST E MKD (BM 106-118 1959)	CL 1161D
LANCASTR (1975)	2348.609	CSBM MON 6IN UP 48FT N & 22FT E C/L INT AVE E & 100TH ST E MKD (BM)106-120 1959)	CL 1163D
LANCASTR (1975)	2342.779	CSBM MON 2IN UP 21FT S & 247FT W C/L INT AVE E & 95TH ST E MKD (BM 106-121 1959)	CL 1164D
LANCASTR (1975)	2341.869	CSBM MON 6IN UP 46FT S & 32FT E C/L INT AVE E & 90TH ST E MKD (BM 106-122 1959)	CL 1165D
LANCASTR (1975)	2346.695	RDBM TAG IN CONC FTG FLUSH 50FT S & 53FT E/O C/L INT 90TH ST E & AVE E-8	CL 1167D
LANCASTR (1975)	2355.365	CSBM MON 2IN UP 30FT N & 77FT E C/L INT AVE F & 90TH ST E MKD (BM 116-6 1961)	CL 1168D
LANCASTR (1975)	2364.858	CSBM MON 3IN UP 80FT N & 30FT E C/L INT 90TH ST E & AVE F-8 MKD (BM 116-5 1961)	CL 1169D
LANCASTR (1975)	2374.372	CSBM MON 2IN UP 27FT W C/L 90TH ST E & 70FT S C/L AVE G MKD (BM 116-4 1961)	CL 1170D
LANCASTR (1975)	2383.413	CSBM MON 4IN UP 20FT S & 80FT E C/L INT 90TH ST E & AVE G-8 MKD (BM 116-3 1961)	CL 1171D
LANCASTR (1975)	2394.595	CSBM MON FL 35FT N & 115FT E C/L INT 90TH ST E & AVE H MKD (BM 116-2 1961)	CL 1172D
LANCASTR (1975)	2402.147	CSBM MON FL 155FT N & 30FT E/O C/L INT 90TH ST E & FUT AVE H-8 MKD(116-1 1961)	CL 1173D
LANCASTR (1975)	2412.927	CSBM MON FL 30FT S & 68FT W C/L INT 90TH ST E & AVE I MKD (BM 107-26 1961)	CL 1174D
LANCASTR (1975)	2423.595	CSBM MON 2IN UP 550FT N & 35FT E C/L INT 90TH ST E & AVE I-8 MKD (BM 107-25 1961)	CL 1175D
LANCASTR (1975)	2455.530	CSBM MON 4IN UP 29FT S & 90FT W C/L INT 90TH ST E & AVE J-8 MKD (BM 107-23 1961)	CL 1177D
LANCASTR (1975)	2475.116	CSBM MON FL 60FT S & 27FT W C/L INT 90TH ST E & AVE K MKD (BM 107-22 1961)	CL 1178

10/31/79

LOS ANGELES COUNTY ROAD DEPARTMENT
SURVEY SECTION

PAGE 7

QUAD-YEAR	ELEV	DESCRIPTION (INCLUDE QUAD AND YEAR IN DESCRIPTION)	BM NUMBER
LANCASTR (1975)	2490.246	CSBM MON 3IN UP 45FT S & 33FT E C/L INT 90TH ST E & AVE K-8 MKD (BM107-21 1961)	CL 1179
LANCASTR (1975)	2498.052	CSBM MON FL 30FT S & 60FT W C/L INT 90TH ST E & AVE L MKD (BM 107-20 1961)	CL 1180
LANCASTR (1975)	2513.247	CSBM MON FL 35FT N & 34FT E C/L INT 90TH ST E & AVE L-8 MKD (BM 107-19 1961)	CL 1181
BASELINE (1973)	2525.992	CSBM MON 4IN UP 36FT N C/L AVE M & 36FT E C/L 90TH ST E MKD (BM 107-18 1961)	CL 1182
BASELINE (1973)	2536.604	CSBM MON 4IN UP ON NE COR 90TH ST E & AVE M-8 40FT N & 38FT E C/L INT MKD (BM 107-17 1961)	CL 1183
BASELINE (1973)	2554.780	CSBM MON 4IN UP 40FT S C/L AVE N & 30FT W C/L 90TH ST E MKD (BM 107-16 1961)	CL 1184
BASELINE (1973)	2560.529	CSBM MON 6IN UP 25FT S C/L AVE N-8 & 60FT E C/L 90TH ST E MKD (BM 107-15 1961)	CL 1185
BASELINE (1973)	2577.099	CSBM MON 6IN UP ON NE COR 90TH ST E & AVE O 237FT N & 37FT E C/L INT MKD (BM 107-14 1961)	CL 1186
LANCASTR (1975)	2530.015	CS MON IN WELL 26IN DN @ C/L INT AVE M & 95TH ST E MKD (CO SURV 1/4 SEC COR 32 5 T6N T7N R10W	CL 2036
LANCASTR (1975)	2532.876	CSBM MON 4IN UP 38FT S & 89FT E C/L INT AVE M & 95TH ST E MKD (BM 122-1 1961)	CL 2037
LANCASTR (1975)	2539.164	CS MON 8IN DN IN WELL @ C/L INT AVE M & 100TH ST E MKD (CO SURV 32 33 5 4 T6N T7N R10W 1925)	CL 2038
LANCASTR (1975)	2541.320	CSBM MON 4IN UP @ SE COR AVE M & 100TH ST E 26FT S & 75FT E C/L INT MKD (BM 122-2 1961) 2IN IP MKR 3FT UP 2FT N	CL 2039
LANCASTR (1975)	2546.970	CSBM MON 4IN UP @ SE COR AVE M & 105TH ST E 66FT E & 28FT S C/L INT MKD (BM 122-3 1961) 2IN IP MKR 3FT UP 2FT N	CL 2040
LANCASTR (1975)	2549.880	CSBM MON FL 48FT S & 52FT E C/L INT 110TH ST E & AVE M MKD (BM 122-4 1961)	CL 2041
LANCASTR (1975)	2546.516	CS MON 7IN UP @ C/L INT AVE M & 120TH ST E MKD (CO SURV 34 35 3 2 T6N T7N R10W) 2IN IP MARKER 3FT UP 2FT S	CL 2043
LANCASTR (1975)	2537.631	CS MON 12IN UP @ C/L INT AVE M & 125TH ST E MKD (CO SURV 1/4 SEC COR 2 35 T6N T7N R10W)	CL 2044

QUAD-YEAR	ELEV	DESCRIPTION (INCLUDE QUAD AND YEAR IN DESCRIPTION)	BM NUMBER
LANCASTR (1975)	2537.774	CS MON 2IN UP @ C/L INT AVE M & 130TH ST E MKD CO SURV 36 35 2 1 T6N T7N R10W)	CL 2045
LANCASTR (1975)	2551.754	CS MON 3IN UP @ C/L INT AVE M & 135TH ST E MKD (CO SURV 1/4 SEC COR 36 1 T6N T7N R10W)	CL 2046
LANCASTR (1975)	2654.963	CS MON 15IN UP @ C/L INT AVE M & 140TH ST E MKD (CO SURV 1 6 31 36 T6N T7N R10W R9W)	CL 2047
LANCASTR (1975)	2688.722	2IN IP WITH CUT SPK IN CONC 6IN UP @ 1/4 COR 31 6 R9W T6N T7N (FUT C/L INT AVE M & 145TH ST E)	CL 2048
BASELINE (1973)	2575.606	CSBM MON 2IN DN ON NE COR AVE M & 150TH ST E 53FT N & 33FT E C/L INT MKD (BM 115-11 1961)	CL 2049
BASELINE (1973)	2575.643	CS MON IN WELL @ C/L INT AVE M & FUT 155TH ST E MKD (1/4 SEC COR 32 5 T6N T7N R9W)	CL 2050
BASELINE (1973)	2579.269	2IN IP CONC PLUG & NAIL 8IN UP ON NE COR AVE M & FUT 155TH ST E 50FT N & 50FT E C/L INT CHIZ X ON E EDGE	CL 2051
BASELINE (1973)	2576.988	2IN IP CONC PLUG & NAIL 8IN UP ON SW COR AVE M & FUT 160TH ST E 50FT S & 50FT W C/L INT CHIZ X ON W EDGE	CL 2052
BASELINE (1973)	2577.055	2IN IP CONC PLUG & NAIL 8IN UP ON NE COR AVE M & FUT 160TH ST E 50FT N & 50FT E C/L INT	CL 2053
BASELINE (1973)	2577.769	2IN IP CONC PLUG & NAIL FLUSH ON SW COR AVE M & FUT 165TH ST E 50FT S & 50FT W C/L INT	CL 2054
BASELINE (1973)	2578.007	2IN IP CONC PLUG & NAIL 6IN UP ON NE COR AVE M & FUT 165TH ST E 50FT N & 50FT E C/L INT	CL 2055
LANCASTR (1975)	2561.168	CS MON IN WELL 18IN DN @ C/L INT 170TH ST E & AVE K-8 MKD (CO SURV 1/4 SEC COR 27 28 R9W T7N)	CL 2109
LANCASTR (1975)	2531.176	CSBM MON IN WELL 14IN DN 17FT S & 33FT E C/L INT 150TH ST E & AVE K-8 MKD (BM 115-14 1961) 2IN IP MKR 3FT UP 2FT E	CL 2110
LANCASTR (1975)	2488.864	CS MON IN WELL 8IN DN @ C/L INT AVE J & 150TH ST E MKD (CO SURV 17 18 19 20 R9W T7N) USE NE EDGE	CL 2160
LANCASTR (1975)	2489.013	CS MON IN WELL 6IN DN @ C/L INT AVE J & FUT 145TH ST E MKD (1/4 COR 18 19 R9W T7N)	CL 2161
LANCASTR (1975)	2451.717	2IN IP 6IN UP ON C/L PROD AVE G-8 50FT E C/L 140TH ST E P M ON N EDGE	CL 2162

QUAD-YEAR	ELEV	DESCRIPTION (INCLUDE QUAD AND YEAR IN DESCRIPTION)	BM NUMBER
LANCASTR (1975)	2455.293	2IN IP 6IN UP @ SW COR 140TH ST E & FUT AVE F-8 25FT S & 50FT W C/L INT	CL 2163
LANCASTR (1975)	2461.626	2IN IP 6IN UP W/CONC PLUG & NAIL 50FT N & 50FT E C/L INT 140TH ST E & AVE E-8 (CHIZ X ON N EDGE)	CL 2164
LANCASTR (1975)	2341.410	L&T S END GAS PUMP ISL @ NE COR 90TH ST E & AVE E 75FT N & 80FT E C/L INT	CL 2165D
LANCASTR (1975)	2346.758	CS MON FLUSH ON SW COR 90TH ST E & AVE E-8 56FT S & 27FT W C/L INT MKD (BM 116-7 1961)	CL 2166D
LANCASTR (1975)	2382.857	CS MON IN WELL 11IN DN @ C/L INT 90TH ST E & AVE G-8 MKD (1/4 SEC COR 5 6 R10W T7N RE 5869) USE N EDGE	CL 2167D
LANCASTR (1975)	2400.678	CS MON IN WELL 9IN DN @ C/L INT 90TH ST E & FUT AVE H-8 MKD (1/4 COR 7 8 T7N R10W RE 5869) USE W EDGE	CL 2168D
LANCASTR (1975)	2446.066	2IN IP & CS TAG 4IN UP @ NW COR AVE J & 95TH ST E 40FT N & 40FT W/O C/L INT E EDGE	CL 2169D
LANCASTR (1975)	2488.600	CS MON (S EDGE) IN WELL 8IN DN @ C/L INT 90TH ST ST E & AVE K-8 MKD (CO SURV 1/4 SEC COR 29 30 R10W T7N)	CL 2189
LANCASTR (1975)	2511.836	CS MON IN WELL 11IN DN @ C/L INT 90TH ST E & FUT AVE L-8 MKD (CO CURV 1/4 31 32 R10W T7N)	CL 2190
LANCASTR (1975)	2432.926	2IN IP & BOLT IN WELL 15IN DN @ C/L INT AVE H & 135TH ST E	CL 2337
LANCASTR (1975)	2434.006	2IN IP W/SHELL CASE 4IN UP ON C/L 135TH ST E 40FT N/O C/L AVE H USE N EDGE	CL 2338A
LANCASTR (1975)	2430.716	L&T W SIDE STANDPIPE @ NE COR AVE H & 130TH ST E 62FT N & 82FT E C/L INT	CL 2339D
LANCASTR (1975)	2426.648	CS MON IN WELL 12 IN DN @ C/L INT AVE H & 130TH ST E MKD (CO SURV SEC COR 1 2 12 11 R10W T7N) USE E EDGE	CL 2340D
LANCASTR (1975)	2429.004	2IN IP CONC PLUG & CS TAG @ SE COR AVE H & 125TH ST E 40FT E & 40FT S C/L INT	CL 2341D
LANCASTR (1975)	2425.480	CS MON IN WELL 6IN DN @ C/L INT AVE H & 125TH ST E MKD (1/4 COR 2 11 R10W T7N RE 5869) USE N EDGE	CL 2342D
LANCASTR (1975)	2418.013	2IN IP CONC PL & N 4IN UP @ SE COR AVE H & 120TH ST E 50FT S & 50FT E C/L INT USE NW EDGE	CL 2343D

QUAD-YEAR	ELEV	DESCRIPTION (INCLUDE QUAD AND YEAR IN DESCRIPTION)	BM NUMBER
LANCASTR (1975)	2416.698	CS MON IN WELL 18IN DN @ C/L INT AVE H & 120TH ST E MKD (CO SURV 3 2 10 11 R10W T7N) USE N EDGE	CL 2344D
LANCASTR (1975)	2415.589	2IN IP CONC PLUG & NAIL (S EDGE) 9IN UP @ SE COR 115TH ST E & AVE H 40FT S & 40FT E C/L INT	CL 2345D
LANCASTR (1975)	2412.970	CS MON (N EDGE) IN WELL 18IN DN @ C/L INT 115TH ST E & AVE H MKD (1/4 COR 3 10 R10W T7N)	CL 2346D
LANCASTR (1975)	2411.277	CS MON IN WELL 6IN DN @ C/L INT 110TH ST E & AVE H MKD (CO SURV 4 3 9 10 R10W T7N) USE E EDGE	CL 2347D
LANCASTR (1975)	2412.641	2IN IP CONC PLUG & NAIL (SE EDGE) 6IN UP @ NW COR AVE H & 110TH ST E 39FT N & 40FT W C/L INT	CL 2348D
LANCASTR (1975)	2397.356	CS MON IN WELL 12IN DN @ C/L INT AVE H & 100TH ST E MKD (5 4 8 9 R10W T7N) USE E EDGE	CL 2350D
LANCASTR (1975)	2395.316	CS MON IN WELL 8IN DN @ C/L INT AVE H & FUT 95TH ST E MKD (1/4 COR 5 8 T7N R10W) USE E EDGE	CL 2351D
LANCASTR (1975)	2374.669	2IN IP CONC PL & CS TAG 8IN UP 50FT N & 50FT E C/L INT 120TH ST E & AVE E-8	CL 2352D
LANCASTR (1975)	2374.095	CS MON IN WELL 8IN DN @ C/L INT 120TH ST E & FUT AVE E-8 MKD (1/4 COR 26 27 R10W T8N RE 5869) USE E EDGE	CL 2353D
LANCASTR (1975)	2380.776	2IN IP CONC PL & CS TAG 8IN UP 50FT S & 50FT E C/L INT 120TH ST E & AVE F (USE X ON NE EDGE)	CL 2355D
LANCASTR (1975)	2390.151	CS MON IN WELL 15IN DN @ C/L INT 120TH ST E & FUT AVE F-8 MKD (1/4 SEC COR 34 35 T8N R10W RE 62) USE E EDGE	CL 2356D
LANCASTR (1975)	2392.070	2IN IP & CS TAG 10IN UP 50FT S & 50FT W C/L INT 120TH ST E & AVE F-8 CHIS X ON NE EDGE	CL 2357D
LANCASTR (1975)	2397.788	CS MON IN WELL 30IN DN @ C/L INT 120TH ST E & FUT AVE G MKD (SEC COR 34 35 3 2 R10W T7N T8N)	CL 2358
LANCASTR (1975)	2407.056	CS MON IN WELL 30IN DN @ C/L INT 120TH ST E & FUT AVE G-8 MKD (1/4 COR 3 2 R10W T7N) USE W EDGE	CL 2359
LANCASTR (1975)	2409.266	2IN IP CONC PL & N 10IN UP 40FT S & 40FT E C/L INT 120TH ST E & AVE G-8 USE E EDGE	CL 2360D
LANCASTR (1975)	2521.252	CSBM MON NW COR CONC WATER VALVE VAULT 55FT E & 30FT S C/L INT AVE G & 145TH ST E MKD (BM 124-1 1966)	CL 2380

QUAD-YEAR	ELEV	DESCRIPTION (INCLUDE QUAD AND YEAR IN DESCRIPTION)	BM NUMBER
LANCASTR (1975)	2594.164	CS MON (E EDGE) IN WELL 18IN DN @ C/L INT AVE G & 150TH ST E MKD (31 32 6 5 T7N T8N R9W)	CL 2381
LANCASTR (1975)	2597.953	RDBM TAG NW COR CONC WATER VALVE VAULT 31FT S & 77FT E C/L INT AVE G & 150TH ST E	CL 2382
LANCASTR (1975)	2672.607	CSBM MON FL 31FT N & 60FT E C/L INT AVE G & 155TH ST E MKD (BM 124-3 1966)	CL 2384
LANCASTR (1975)	2743.101	CS MON (E EDGE) IN WELL @ C/L INT AVE G & 160TH ST E MKD (SEC COR 32 33 5 4 R9W T8N T7N)	CL 2385
LANCASTR (1975)	2747.218	RDBM TAG CONC BASE FIRE HYD 32FT S & 81FT E C/L INT AVE G & 160TH ST E	CL 2386
LANCASTR (1975)	2849.407	BOLT IN WELL 19IN DN @ C/L INT AVE G & 165TH ST E	CL 2387
LANCASTR (1975)	2855.732	CSBM MON FLUSH @ NE COR AVE G & 165TH ST E 134FT E & 29FT N C/L INT MKD (BM 124-5 1966)	CL 2388
LANCASTR (1975)	2932.189	CS MON (E EDGE) IN WELL 22IN DN @ C/L INT AVE G & 170TH ST E MKD (SEC COR 33 34 4 3 T7N T8N R9W)	CL 2389
LANCASTR (1975)	2935.428	RDBM TAG IN NW COR CONC BASE OF VALVE VAULT @ SE COR AVE G & 170TH ST E 80FT E & 30FT S C/L INT	CL 2390
LANCASTR (1975)	2973.578	CS MON IN WELL 6IN DN @ C/L INT AVE G & 175TH ST E MKD (1/4 COR 34 3 R9W T8N T7N)	CL 2391
LANCASTR (1975)	2974.874	RDBM TAG NW COR CONC BASE OF FIRE HYD @ SE COR AVE G & 175TH ST E 60FT E & 33FT S C/L INT	CL 2392
LANCASTR (1975)	3047.928	CS MON (S EDGE) IN WELL 14IN DN @ C/L INT AVE G & 180TH ST E MKD (SEC COR 34 35 3 2 R9W T8N T7N)	CL 2393
LANCASTR (1975)	3052.418	RDBM TAG NW COR CONC BASE OF FIRE HYD @ SE COR AVE G & 180TH ST E 80FT E & 32FT S C/L INT	CL 2394
LANCASTR (1975)	3088.095	CS MON (N EDGE) IN WELL 17IN DN @ C/L INT AVE G & 185TH ST E MKD (1/4 COR 35 2 R9W T8N T7N)	CL 2395
LANCASTR (1975)	3090.154	RDBM TAG NW COR CONC BASE OF FIRE HYD @ SE COR AVE G & 185TH ST E 58FT E & 32FT S C/L INT	CL 2396
LANCASTR (1975)	3126.725	CS MON (NE EDGE) IN WELL 18IN DN @ C/L INT AVE G & 190TH ST E MKD (35 36 2 1 T8N T7N R9W)	CL 2397
LANCASTR (1975)	3125.965	2IN IP CONC PLUG & CS TAG (S EDGE) 4IN UP @ NE COR AVE G & 190TH ST E 50FT N & 50FT E C/L INT	CL 2398

QUAD-YEAR	ELEV	DESCRIPTION (INCLUDE QUAD AND YEAR IN DESCRIPTION)	BM NUMBER
LANCASTR (1975)	3072.198	CS MON (E EDGE) IN WELL 19IN DN @ C/L INT AVE G & 195TH ST E MKD (1/4 COR 36 1 T7N T8N R9W)	CL 2399
LANCASTR (1975)	3074.108	2IN IP CONC PLUG & CS TAG 8IN UP @ SW COR AVE G & 195TH ST E 50FT S & 50FT W C/L INT	CL 2400
LANCASTR (1975)	3043.867	CS MON (N EDGE) IN WELL 18IN DN @ C/L INT AVE G & 200TH ST E MKD (SEC COR 36 31 1 6 T7N T8N R8W R9W)	CL 2401
LANCASTR (1975)	3047.236	2IN IP CONC PLUG & BRAD 4IN UP @ SW COR AVE G & 200TH ST E 50FT S & 50FT W C/L INT USE E EDG	CL 2402
LANCASTR (1975)	3030.648	CS MON (SW EDGE) IN WELL 6IN DN @ C/L INT 200TH ST E & AVE G-8 MKD (1/4 COR 1 6 T7N R8W R9W)	CL 2403
LANCASTR (1975)	3028.318	2IN IP (S EDGE) 3IN UP @ SW COR 200TH ST E & AVE G-8 50FT S & 50FT W C/L INT	CL 2404
LANCASTR (1975)	2994.900	CS MON (S EDGE) IN WELL 8IN DN @ C/L INT 200TH ST E & AVE H MKD (SEC COR 1 6 12 7 R8W R9W T7N)	CL 2405
LANCASTR (1975)	2996.639	1 1/2IN IP CONC PLUG & NAIL @ SW COR 200TH ST E & AVE H 50FT S & 50FT W C/L INT	CL 2406
LANCASTR (1975)	2970.992	CS MON (S EDGE) IN WELL 10IN DN @ C/L INT 200TH ST E & AVE H-8 MKD (1/4 COR 12 7 T7N R9W R8W)	CL 2407
LANCASTR (1975)	2981.906	CS MON (S EDGE) IN WELL 15IN DN @ C/L INT 200TH ST E & AVE I MKD (SEC COR 12 7 13 18 T7N R8W R9W)	CL 2409
LANCASTR (1975)	2984.755	CS MON 6IN UP @ SW COR 200TH ST E & AVE I 40FT W & 40FT S C/L INT MKD (RPC 1)	CL 2410
LANCASTR (1975)	2958.434	CS MON (S EDGE) IN WELL 8IN DN @ C/L INT AVE H & 195TH ST E PROP MKD (1/4 COR 12 13 T7N R9W)	CL 2411
LANCASTR (1975)	2964.618	CS MON 5IN UP ON C/L 195TH ST E 40FT S C/L AVE I MKD (RPC 3)	CL 2412
LANCASTR (1975)	2908.034	CS MON (S EDGE) IN WELL 12IN DN @ C/L INT AVE I & 190TH ST E MKD (SEC COR 11 12 13 14 R9W T7N)	CL 2413
LANCASTR (1975)	2909.331	CS MON @ SE COR AVE I & 190TH ST E 40FT E & 38FT S C/L INT MKD (RPC 5)	CL 2414
LANCASTR (1975)	2897.445	CS MON 6IN UP 37FT E C/L 190TH ST E & 0.25MI S AVE I MKD (BM RP BC)	CL 2415
LANCASTR (1975)	2907.244	CS MON (S EDGE) IN WELL 6IN DN @ C/L INT 190TH ST E & PROP AVE I-8 MKD (1/4 COR 14 13 T7N R9W)	CL 2416

