

COUNTY OF LOS ANGELES

ROAD DEPARTMENT

PRECISE

BENCH MARK LIST



PUENTE QUAD

1970 ADJUSTMENT

PREFACE

The Road Department level net is composed of more than 1,000 miles of levels supporting in excess of 10,000 bench marks. In 1964-65, a major readjustment of the net was undertaken. To emphasize the complete break with previous elevations, the SY, SG & SL series bench marks have been re-labeled BY, BG & BL, respectively.

To facilitate the adjustment, indexing, and distribution of adjusted values of the net, the County territory was divided into 31 quads or areas. For identification purposes each quad was given a name, viz., "Rosemead," "La Mirada," "Santa Fe," etc. When bench marks and elevations in the Road Department net are used, the name of the quad in which the bench mark is located and the date of the adjustment of the elevation must be included in the bench mark description, e.g.,

BG 1887 ---L+BN IN CONC HDWL OF DRAIN PIPE UNDER DR 218 FT
NE +18 FT SE C/L INT GRAND AVE +CAMERON AVE MKD (BM)
(COVINA ---1965) ELEV. 696.238

It is expected that this general adjustment will, for the most part, remain sound for the next 8 to 12 years. As new circuits are completed, however, re-adjustment of individual quads may become advisable. It is expected that these subsequent adjustments will be in the nature of a few hundredths of a foot. When a quad is re-adjusted, new elevation lists will be published and the date of the re-adjustment will replace the "1965" at the end of the bench mark description. Two bench marks in the same quad with different adjustment dates will not normally join each other. Since all adjustments taper out to nothing at the periphery of the quad, any bench mark in one quad will join any bench mark in another quad regardless of their respective adjustment dates.

The basic accuracy of the net is reflected by an indicated field probable error of plus or minus 0.012 foot per mile of leveling as determined from 298 conditions of closure. However, many years experience in vertical control in the greater Los Angeles basin and Antelope Valley indicate that because of varying degrees of subsidence and heaving, the true datum is recovered only by obtaining substantial agreement of a number of bench marks.

The users of this net are invited to assist in its maintenance by notifying this Department of cases of obliteration, apparent mistakes in descriptions or elevations, and proven disturbance of bench marks.

DATUM: U. S. Coast and Geodetic Survey Sea Level Datum
of 1929, through the medium of the Los Angeles
County Engineer Precise Level Net, 1963 Adjust-
ment.

ABBREVIATIONS USED IN BENCH MARK LISTINGS

ABUT - - - - -	Abutment	EC - - - - -	End of Curve
ALG - - - - -	Along	ENT - - - - -	Entrance
ANG PT - - - - -	Angle Point	FL - - - - -	Floor
B/W - - - - -	Back of Walk	FTG - - - - -	Footing
BCR - - - - -	Beginning of Curb Return	F/W - - - - -	Front of Walk
BC - - - - -	Beginning of Curve	GAR - - - - -	Garage
BLDG - - - - -	Building	HDWL - - - - -	Headwall
BM - - - - -	Bench Mark	HSE - - - - -	House
BT SPK - - - - -	Boat or Bolt Spike	INT - - - - -	Intersection
BR CAP - - - - -	Brass or Bronze Cap	IP - - - - -	Iron Pipe
C B - - - - -	Catch Basin	LT - - - - -	Left
CTR - - - - -	Center	LACE - - - - -	L. A. City Engineer
C/L - - - - -	Center Line	LACS - - - - -	L. A. County Engineer
C/L INT - - - - -	Center Line Intersection	LAFC - - - - -	L. A. Co. Flood Control
C/L PROD - - - - -	Center Line Produced	L+BN - - - - -	Lead and Bench Nail
CONC - - - - -	Concrete	L+BR - - - - -	Lead and Brad
COR - - - - -	Corner	L+N - - - - -	Lead and Nail
COE - - - - -	Corps of Engineers	L+RDBM TAG - - - - -	Lead and Road Dept. Bench Mark Tag
CULV - - - - -	Culvert	L+SPK - - - - -	Lead and Spike
CB - - - - -	Curb	L+T - - - - -	Lead and Tack
CS MON - - - - -	County Engineer Monument	MCR - - - - -	Middle of Curb Return
CS BR CAP - - - - -	County Engineer Brass Cap	MKD - - - - -	Marked
CT SPK - - - - -	Cut Spike	MC - - - - -	Middle of Curve
DR - - - - -	Drive or Driveway	MON - - - - -	Monument
E/O - - - - -	East of	N/O - - - - -	North of
ECR - - - - -	End of Curb Return	NR - - - - -	Near

ABBREVIATIONS USED IN BENCH MARK LISTINGS ° ° ° CONTINUED

OPP - - - - - Opposite
PI - - - - - Point of Intersection
PK+W - - - - - PK Nail and Washer
P/L - - - - - Property Line
POST - - - - - Point on Semi-Tangent
PP - - - - - Power Pole
PVMT - - - - - Pavement
PROD - - - - - Produced
RD - - - - - Road
RDEM - - - - - Road Dept. Bench Mark
RR - - - - - Railroad
RT - - - - - Right
R/W - - - - - Right of Way
SDMH - - - - - Storm Drain Manhole
SMH - - - - - Sewer Manhole
SPK - - - - - Spike
ST+W - - - - - Spike Tin and Washer
S/O - - - - - South of
TP - - - - - Telephone Pole
USC+GS - - - - - U. S. Coast and Geodetic Survey
USGS - - - - - U. S. Geological Survey
WK - - - - - Walk
W/O - - - - - West of

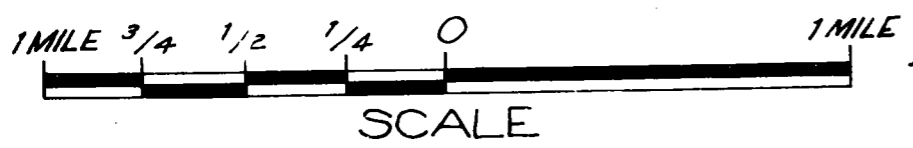
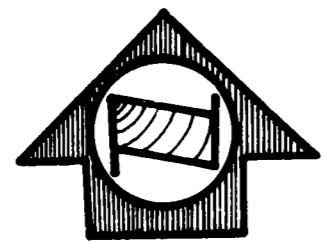
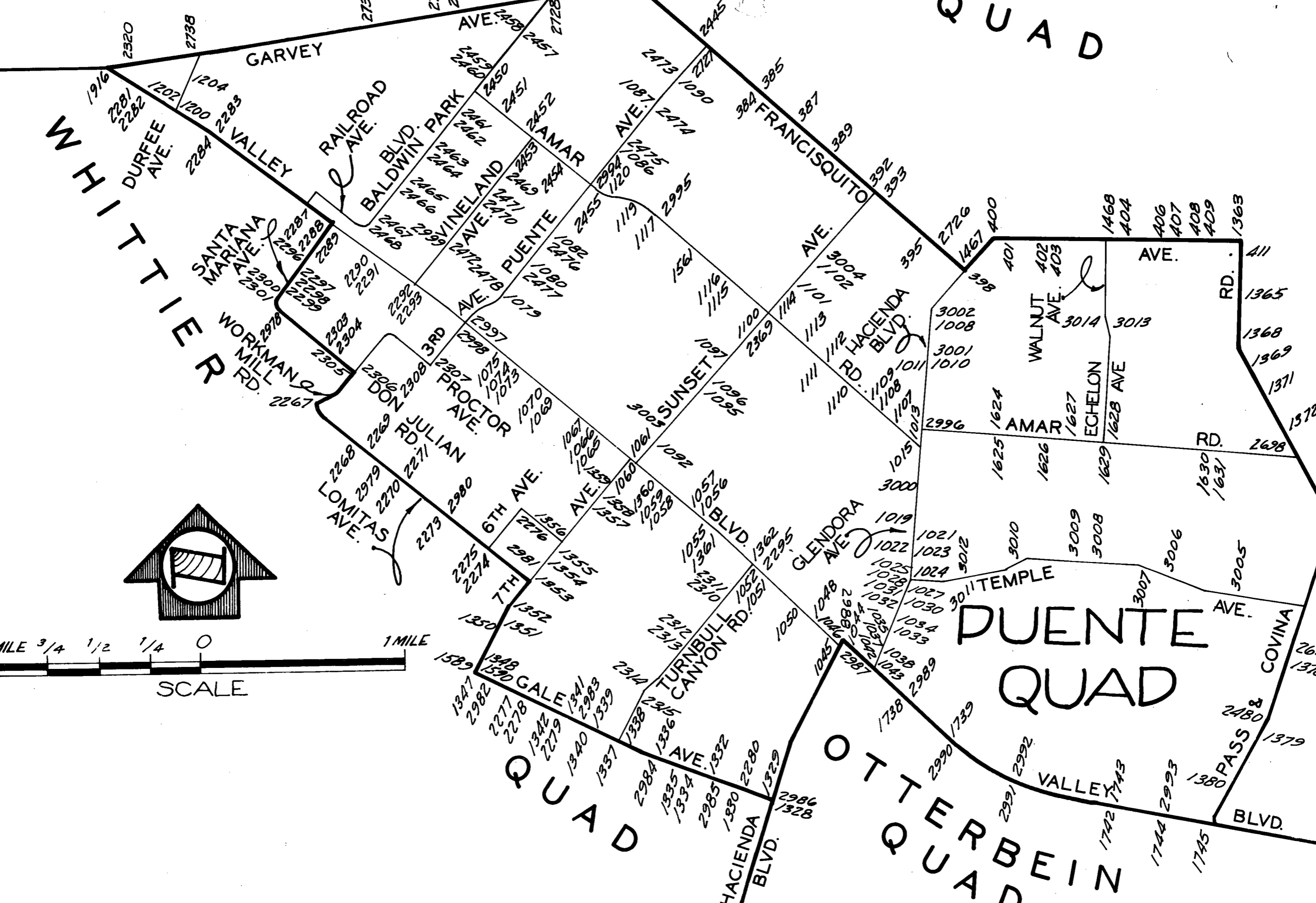
COVINA

QUAD

WHITTIER

QUAD

COVINA



QUAD-YEAR	ELEV	DESCRIPTION (INCLUDE QUAD AND YEAR IN DESCRIPTION)	BM NUMBER
BASELINE (1965)	336.268	L+T IN W CB OF WILLOW AVE 1FT N BCR @ NW COR FRANCISQUITO AVE 20FT W + 64FT N C/L INT	BG 385
BASELINE (1965)	337.533	RDBM TAG IN N CB FRANCISQUITO AVE 2FT E BCR @ NE COR RAMA DR 30FT N + 57FT E OF C/L INT	BG 387
BASELINE (1965)	338.506	PK IN E CB ORANGE AVE 2FT S BCR @ SE COR FRANCISQUITO AVE 66FT S + 18FT E C/L INT	BG 389
BASELINE (1965)	341.454	RDBM TAG CB 6FT E C/L PROD N END OF SERVICE RD 50FT S C/L FRANCISQUITO AVE + 55FT W C/L SUNSET AVE	BG 392
BASELINE (1965)	341.570	L+BRAD 6FT E BCR 30FT S C/L FRANCISQUITO AVE + 80FT E C/L SUNSET AVE	BG 393
BASELINE (1965)	343.209	L+BRAD 3FT E OF CATCH BASIN 30FT S C/L FRANCISQUITO AVE + 55FT W C/L CALIFORNIA AVE	BG 395
BASELINE (1965)	345.364	RDBM TAG IN CB 75FT S C/L FRANCISQUITO AVE 30FT E C/L HACIENDA BLVD	BG 398
BASELINE (1965)	354.082	CS MON @ C/L INT FRANCISQUITO AVE + HACIENDA BLVD	BG 400
BASELINE (1965)	356.215	L+T 4FT E BCR @ SE COR GRIFFITHS AVE + FRANCISQUITO AVE	BG 401
BASELINE (1965)	363.125	L+N @ BCR @ SW COR MULLENDER AVE + FRANCISQUITO AVE	BG 402
BASELINE (1965)	363.165	L+N @ S BCR @ SE COR MULLENDER AVE + FRANCISQUITO AVE	BG 403
BASELINE (1965)	371.914	SQ HD SPK IN N CB OF CATCH BASIN @ NE COR FRANCISQUITO AVE + WALNUT AVE 18FT N + 40FT E C/L INT MKD (AZ 202)	BG 404
BASELINE (1965)	390.237	CS TRI MON C/L INT FRANCISQUITO AVE + VALINDA AVE N MKD (PUENTE J6)	BG 408
BASELINE (1965)	392.399	SQ HD SPK E CB 6FT S BCR @ SE COR FRANCISQUITO AVE + VALINDA AVE 53FT S + 30FT E C/L INT MKD (A2207)	BG 409A
BASELINE (1965)	407.072	L+BN S CB 10FT E BCR 20FT S + 55FT E C/L INT PASS+ COVINA RD + FRANCISQUITO AVE	BG 411A
PUENTE (1970)	339.705	L+BN CONC CB 1FT S BCR 27FT E + 70FT S C/L INT HACIENDA BLVD + MAPLEGROVE ST	BG 1008
PUENTE (1970)	333.886	L+T CONC CB 0.5FT N BCR 50FT N + 40FT E C/L INT HACIENDA BLVD + FAIRGROVE AVE TO THE E	BG 1010
PUENTE (1970)	328.181	L+BN MCR @ NE COR AMAR RD + HACIENDA BLVD	BG 1013
PUENTE (1970)	326.360	L+T E CB GLENDORA AVE 2FT S OF N END CATCH BASIN C/L PROD ELLIOTT AVE 40FT E C/L HACIENDA BLVD	BG 1015
PUENTE (1970)	349.828	CS MON @ C/L INT GLENDORA AVE + VICTORIA AVE (USE N EDGE)	BG 1027
PUENTE (1970)	352.330	L+T W EDGE CONC WK TO HSE NO 15700 VICTORIA AVE 32FT S C/L + 42FT E C/L GLENDORA AVE	BG 1028

QUAD-YEAR	ELEV	DESCRIPTION (INCLUDE QUAD AND YEAR IN DESCRIPTION)	BM	NUMBER
PUENTE (1970)	355.130	L+T N END 1ST STEP TO W ENT PUENTE COMMUNITY CHURCH 30FT E C/L GLENDORA AVE + 125FT N C/L HILL ST	BG	1030
PUENTE (1970)	343.133	CS MON NEAR C/L INT GLENDORA AVE + LAS VECINAS DR (USE W EDGE)	BG	1033
BASELINE (1965)	328.637	L+SPK @ CTR CB RET @ NW COR OLD VALLEY BLVD + GLENDORA AVE MKD (PS)	BG	1042
BASELINE (1965)	328.691	3IN IP + USGS CAP 8IN UP @ PUENTE STA OF SPRR 35FT S C/L OLD VALLEY BLVD + 160FT W C/L GLENDORA	BG	1043
BASELINE (1965)	324.408	L+T CONC WK 4FT S OF SW COR OF BLDG NO 15703 30F E C/L RIDGEWAY ST + 30FT N C/L OLD VALLEY BLVD	BG	1044
BASELINE (1965)	322.309	RD MON IN WELL 8IN DN @ C/L INT OLD VALLEY BLVD + HACIENDA BLVD	BG	1045
BASELINE (1965)	323.860	CS MON FLUSH 1FT E OF E CB 41FT E C/L HACIENDA BLVD + 10FT S OF S RAIL SPRR MKD (BM 11-114A)	BG	1046
PUENTE (1970)	310.196	L+T CTR 1ST CONC STEP TO HSE NO 15328 E VALLEY BLVD 65FT S C/L	BG	1050
PUENTE (1970)	309.871	L+BN CTR CONC WALL IN CTR OF BRICK BLDG NO 15222 65FT S C/L VALLEY BLVD	BG	1051
PUENTE (1970)	309.080	L+BN CONC WK TO BLDG NO 15200 VALLEY BLVD 62FT S C/L + 62FT E C/L TURNBULL CANYON RD	BG	1052
PUENTE (1970)	305.068	L+T NW COR CONC WK TO BLDG NO 14952 VALLEY BLVD 72FT S C/L	BG	1055
PUENTE (1970)	304.512	L+T 10FT W BCR @ NE COR VALLEY BLVD + CALIFORNIA AVE	BG	1056
PUENTE (1970)	304.517	L+T N CB 10FT E BCR @ NW COR VALLEY BLVD + CALIFORNIA AVE 35FT N 35 FT W C/L INT	BG	1057
PUENTE (1970)	303.382	L+T NW COR CONC HDWL @ SE COR VALLEY BLVD + 8TH AVE 30FT S + 25FT E C/L INT	BG	1058
PUENTE (1970)	303.367	L+T IN NE COR CONC HDWL @ SW COR VALLEY BLVD + 8TH AVE 30FT S 25FT W C/L INT	BG	1059
PUENTE (1970)	302.689	L+BN WINGWALL TO SPRR BRIDGE 70FT N C/L VALLEY BLVD + 65FT E C/L SUNSET AVE 10FT S OF S RAIL	BG	1060
PUENTE (1970)	301.871	R D MON C/L SUNSET AVE 40FT N C/L VALLEY BLVD	BG	1061
PUENTE (1970)	297.861	L+BN IN E END CONC HDWL @ SW COR VALLEY BLVD + 6TH AVE C/L INT	BG	1065
PUENTE (1970)	299.582	L+BN N SIDE CONC @ SE COR WIER BOX VALLEY BLVD + ORANGE AVE 35FT S + 45FT E C/L INT	BG	1066
PUENTE (1970)	296.855	CS MON C/L PROD ORANGE AVE 19FT S C/L VALLEY BLV	BG	1067
PUENTE (1970)	298.287	L+BN NW COR CONC HDWL @ SE COR VALLEY BLVD + 5TH AVE E C/L INT	BG	1069
PUENTE (1970)	298.264	L+T NE COR CONC HDWL @ SW COR VALLEY BLVD + 5TH AVE 25FT S + 25FT W C/L INT	BG	1070

QUAD-YEAR	ELEV	DESCRIPTION (INCLUDE QUAD AND YEAR IN DESCRIPTION)	BM NUMBER
PUENTE (1970)	295.786	CS MON 18FT S 2FT W C/L INT VALLEY BLVD + 4TH AVE	BG 1073
PUENTE (1970)	296.905	L+BN NE COR CONC HDWL @ SW COR VALLEY BLVD + 4TH AVE + 23FT W C/L INT	BG 1074
PUENTE (1970)	297.932	L+N NE COR WEIR BOX @ W P/L OF HSE NO 13936 VALLEY BLVD 35FT S C/L + 360FT W C/L 4TH AVE	BG 1075
PUENTE (1970)	296.326	RDBM TAG IN N CB 1FT E BCR @ NE COR NELSON AVE + PUENTE AVE 30FT N + 77FT E C/L INT	BG 1079
PUENTE (1970)	300.553	L+T N EDGE CONC WK TO HSE NO 423 PUENTE AVE 57FT W C/L + 100FT N C/L MOCCASIN ST	BG 1080
PUENTE (1970)	319.040	RDBM TAG S CB 1FT W BCR @ SW COR PUENTE AVE + SAUDER ST 76FT W + 18FT S C/L INT	BG 1086
PUENTE (1970)	323.695	RDBM TAG S CB 1FT W BCR @ SW COR PUENTE AVE + CAGLIERO ST 18FT S + 78FT W C/L INT	BG 1087
PUENTE (1970)	329.082	RDBM TAG S CB 1FT E BCR @ SE COR PUENTE AVE + BARRYDALE ST 72FT E + 18FT S C/L INT	BG 1090
PUENTE (1970)	310.841	L+T N EDGE OF 1ST STEP FRONT OF HSE NO 556 @ SE COR SUNSET AVE + TEMPLE AVE	BG 1095
PUENTE (1970)	311.163	RDBM TAG E CB SUNSET AVE W SIDE OF ISL 40FT E C/L 15FT N C/L PROD HUTCHCROFT ST TO E	BG 1097
PUENTE (1970)	318.233	L+T NR CTR CB RET @ SW COR AMAR RD + SUNSET AVE 48FT S + 54FT W C/L INT	BG 1100
PUENTE (1970)	327.790	RDBM TAG E CB 6FT S BCR @ SE COR SUNSET AVE + FAIRGROVE AVE 66FT S + 40FT E C/L INT	BG 1102
PUENTE (1970)	323.960	L+T N CB 15FT W BCR @ NW COR CADWELL ST + AMAR RD	BG 1107
PUENTE (1970)	322.344	L+T E CB 1FT N BCR @ NE COR ALDGATE AVE + AMAR RD	BG 1108
PUENTE (1970)	322.403	L+T W CB 1FT N BCR @ NW COR ALDGATE AVE + AMAR RD	BG 1109
PUENTE (1970)	320.812	RDBM TAG S CB 40FT S C/L AMAR RD + 50FT E C/L DUFF AVE	BG 1110
PUENTE (1970)	321.215	L+BRAD S CB 6FT W BCR @ SW COR AMAR RD + CALIFORNIA AVE 40FT S + 61FT W C/L INT	BG 1111
PUENTE (1970)	321.106	L+T N CB 1FT W BCR @ NW COR AMAR RD + CALIFORNIA AVE 40FT N + 55FT W C/L INT	BG 1112
PUENTE (1970)	320.295	L+T N CB 1FT E BCR 55FT E C/L EVANWOOD AVE + 40FT N C/L AMAR RD	BG 1113
PUENTE (1970)	318.631	L+T NR CTR CB RET @ NE COR AMAR RD + SUNSET AVE 51FT N + 51FT E C/L INT	BG 1114
PUENTE (1970)	316.756	L+BN W CB 1FT S BCR @ SW COR ORANGE AVE + AMAR RD 18FT W + 76FT S C/L INT	BG 1116
PUENTE (1970)	316.890	L+N S CB AMAR RD 1FT E BCR @ SW COR WILLOW AVE 54FT W + 40FT S C/L INT	BG 1117
PUENTE (1970)	313.954	L+BRAD S CB AMAR RD 1FT W BCR @ SW COR ARDILLA AVE 57FT W + 40FT S C/L INT	BG 1119

QUAD-YEAR	ELEV	DESCRIPTION (INCLUDE QUAD AND YEAR IN DESCRIPTION)	BM	NUMBER
BASELINE (1965)	292.830	L+T N CB VALLEY BLVD 1FT E BCR @ NE COR DURFEE AVE 55FT E + 34FT N C/L INT	BG	1200
BASELINE (1965)	332.668	L+T NR CTR CB RET @ SW COR GALE AVE + HACIENDA BLVD 47FT S + 47FT W C/L INT MKD (BM P)	BG	1328
BASELINE (1965)	332.052	RDBM TAG N CB 9FT E BCR @ NW COR HACIENDA BLVD + GALE AVE 36FT N + 70FT W C/L INT	BG	1329
BASELINE (1965)	329.390	L+T NEDGE CON WK TO HSE NO 15618 8FT W OF END 25FT W C/L FARMSTEAD ST + 55FT S C/L GALE AVE	BG	1330
BASELINE (1965)	328.842	L+T W EDGE CONC DR TO HSE NO 15350 GALE AVE 35FT S C/L	BG	1335
BASELINE (1965)	325.364	L+T 3FT E BCR @ NW COR GALE AVE + TURNBULL CANYON RD	BG	1338A
BASELINE (1965)	324.748	L+BN 4FT E BCR @ NE COR GALE AVE + VALENCIA AVE	BG	1339
BASELINE (1965)	330.369	L+SPK 4FT E OF END CB @ NE COR GALE AVE MKD (AZ 28)	BG	1341A
BASELINE (1965)	322.137	L+T 4FT S BCR @ SE COR CLARK AVE + 7TH AVE	BG	1350
BASELINE (1965)	320.058	L+T 7FT N BCR @ NE COR CLARK AVE + 7TH AVE	BG	1351
BASELINE (1965)	309.072	L+BN NW COR CONC SLAB OVER STORM DRAIN 20FT E C/L 7TH AVE + 6FT N OF N RAIL UPRR	BG	1352A
PUENTE (1970)	297.733	L+BN S CB DR TO HSE NO 159 7TH AVE 30FT W C/L	BG	1359
PUENTE (1970)	302.189	L+T W END CONC HDWL CULV 30FT S C/L VALLEY BLVD 20FT E DR TO HSE NO 14650 MKD (35-C.)	BG	1360
PUENTE (1970)	306.812	L+T NE COR WEIR BOX @ SW COR 9TH AVE + VALLEY BLVD MKD (38-C.)	BG	1361
PUENTE (1970)	308.037	L+T N CB VALLEY BLVD C/L PROD TURNBULL CANYON RD 1FT W OF E EDGE CATCH BASIN	BG	1362
BASELINE (1965)	405.192	CS MON IN WELL @ C/L INT PASS + COVINA RD + FRANCISQUITO AVE	BG	1363A
BASELINE (1965)	412.127	L+BN E CB PASS + COVINA RD 144FT S C/L DOUBLEGROVE ST	BG	1365
BASELINE (1965)	428.146	L+BN S CB 2FT E BCR @ SE COR MAPLEGROVE ST + PASS + COVINA RD	BG	1368
BASELINE (1965)	439.007	CS MON IN WELL C/L PASS + COVINA RD 400FT SE OF PI S OF MAPLEGROVE ST NR WATER RESERVOIR MKD (BM 37-5 1954 RE 63)	BG	1369
BASELINE (1965)	426.871	CS MON IN WELL @ C/L INT AMAR RD + PASS + COVINA RD	BG	1372
BASELINE (1965)	345.485	CS MON C/L INT FRANCISQUITO AVE TO W + HACIENDA BLVD	BG	1467
BASELINE (1965)	370.340	CS MON 6FT E + 1FT N C/L INT FRANCISQUITO AVE + WALNUT AVE	BG	1468
PUENTE (1970)	316.550	RDBM TAG N CB S ISLAND AMAR RD 3FT E OF CATCH BASIN @ SUNKIST AVE 40FT S + 58FT E C/L IN	BG	1561

QUAD-YEAR	ELEV	D E S C R I P T I O N (INCLUDE QUAD AND YEAR IN DESCRIPTION)	BM	NUMBER
PUENTE (1970)	334.786	L+ BRAD IN N CB AMAR RD 40FT N C/L ON C/L PROD DEL VALLE ST	BG	1624
PUENTE (1970)	335.877	L+BRAD 1FT E BCR @ SE COR AMAR RD + DEL VALLE ST 40FT S + 48FT E C/L INT	BG	1625
PUENTE (1970)	337.446	RDBM TAG 1FT W BCR @ SW COR AMAR RD + AILERON AVE 40FT S + 58FT W C/L INT	BG	1626
PUENTE (1970)	340.787	SQ HD SPK 2FT N BCR @ NE COR AMAR RD + GREY CLIFF AVE 75FT N + 18FT E C/L INT	BG	1627
PUENTE (1970)	351.114	L+BRAD IN N CB 7FT E BCR @ NE COR ECHELON AVE + AMAR RD 40FT N + 63FT E C/L INT	BG	1628
PUENTE (1970)	351.330	RDBM TAG 1FT E BCR @ SE COR AMAR RD + ECHELON AVE 40FT S + 60FT E C/L INT	BG	1629
PUENTE (1970)	372.500	RDBM TAG 6FT W BCR @ SW COR AMAR RD + VALINDA AVE 40FT S + 75FT W C/L INT	BG	1630
PUENTE (1970)	373.895	L+T 1FT E BCR @ SE COR AMAR RD + VALINDA AVE 40FT S + 66FT E C/L INT	BG	1631
BASELINE (1965)	335.689	L+T CONC FOUNDATION OF GAS STA 33FT W C/L ALBERT ST + 50FT S C/L OLD VALLEY BLVD MKD (BM)	BG	1738
BASELINE (1965)	343.475	RDBM TAG N CB 4FT E BCR 20FT N C/L OLD VALLEY BLVD + 28FT E C/L BAJA AVE	BG	1739
BASELINE (1965)	370.330	L+BN N CONC HDWL 75FT S C/L VALLEY BLVD + 150FT W C/L WICKFORD AVE	BG	1742
BASELINE (1965)	373.088	L+T IN END OF ISL 4FT N C/L VALLEY BLVD + 60FT W C/L WICKFORD AVE	BG	1743
BASELINE (1965)	374.904	CT SPK CTR HDWL 27FT E C/L ANAHEIM-PUENTE RD + 65FT S C/L VALLEY BLVD MKD (BM 16)	BG	1744
BASELINE (1965)	379.341	RD MON IN WELL 7IN DN @ C/L INT VALLEY BLVD + PASS + COVINA RD	BG	1745
BASELINE (1965)	287.948	CS MON IN WELL 8IN DN ON C/L VALLEY BLVD + 27FT S C/L GARVEY AVE MKD (EL MONTE J5 RE 2177)	BG	1916
BASELINE (1965)	338.912	CS MON IN WELL 10IN DN 11FT S C/L WORKMAN MILL RD + 5FT W C/L LOMITAS AVE MKD (BM 11-121)	BG	2267
BASELINE (1965)	377.305	L+T CONC FOOTING OF 5FT FENCE COR @ SE COR LOMITAS AVE + 3RD AVE 30FT S + 30FT E C/L INT MKD (BM)	BG	2268
BASELINE (1965)	376.452	L+T CONC APRON OF DR TO HSE @ NE COR LOMITAS AVE + 3RD AVE 25FT N + 65FT E C/L INT MKD (BM)	BG	2269A
BASELINE (1965)	372.854	CS MON IN WELL 10IN DN @ C/L INT LOMITAS AVE + 4TH AVE MKD (PUENTE A8)	BG	2271
BASELINE (1965)	285.575	CS MON IN WELL 11IN DN @ SE COR LOMITAS AVE + 5TH AVE 10FT S + 10FT E C/L INT MKD (BM 42-2)	BG	2273A
BASELINE (1965)	288.609	COE MON IN CONC HDWL @ NW COR LOMITAS AVE + 6TH AVE 33FT N + 23FT W C/L INT MKD (SJC 105)	BG	2275A
PUENTE (1970)	290.318	CS MON IN WELL 10IN DN @ C/L INT DON JULIAN RD + 6TH AVE MKD (PUENTE 9A)	BG	2276
BASELINE (1965)	351.044	L+T W CB OF W SERV RD 2FT S BCR @ SW COR GALE AVE + LATCHFORD AVE 15FT W + 44FT S C/L INT SERV RD	BY	2277

QUAD-YEAR	ELEV	DESCRIPTION (INCLUDE QUAD AND YEAR IN DESCRIPTION)	BM	NUMBER
BASELINE (1965)	350.768	L+T N CB OF S SERV RD @ SE COR GALE AVE + LATCHFORD AVE 14FT N + 36FT E C/L INT SERV RD	BG	2278A
BASELINE (1965)	331.511	CS MON IN WELL 10IN DN @ C/L INT GALE AVE + 9TH AVE MKD (PUENTE C-11)	BG	2279
BASELINE (1965)	328.653	L+BN N CB GALE AVE 40FT N C/L + 100FT E FARMSTEAD AVE MKD (BM)	BG	2280A
BASELINE (1965)	289.430	RDBM TAG IN E CB ALLGEYER AVE 1FT S BCR @ SE COR VALLEY BLVD 20FT E + 67FT S C/L INT	BG	2282
BASELINE (1965)	288.067	CS MON IN WELL 12IN DN 6FT N + 75FT W C/L INT VALLEY BLVD + RUMFORD AVE	BG	2283
BASELINE (1965)	287.363	L+T IN CONC WLK TO BLDG NO 12418 40FT S + 95FT W C/L INT VALLEY BLVD + RUMFORD AVE	BG	2284
BASELINE (1965)	291.437	CS MON IN WELL 12IN DN 15FT S OF N EDGE OF CONC PVMT VALLEY BLVD + 230FT W C/L SAN ANGELO AVE MKD (L-6 RE 2177)	BG	2287
BASELINE (1965)	292.282	L+T S END OF GAS PUMP ISL 65FT S VALLEY BLVD + 140FT W C/L SANTA MARIANA AVE 30FT W BLDG NO 13128	BG	2288
BASELINE (1965)	292.407	1/2IN STEEL ROD @ NW COR CONC SLAB OF BLDG NO 13148 VALLEY BLVD 40FT S C/L + 95FT E C/L SANTA MARIANA AVE	BG	2289A
PUENTE (1970)	293.309	L+T S END OF GAS PUMP ISL 100FT W C/L PROD COLLWOOD AVE + 50FT N C/L VALLEY BLVD	BG	2290
PUENTE (1970)	291.594	RDBM TAG N CB 35FT E C/L PROD COLLWOOD AVE + 50FT N C/L VALLEY BLVD	BG	2291
PUENTE (1970)	291.824	CS MON IN WELL 12IN DN @ C/L INT VALLEY BLVD + VINELAND AVE MKD (TRAV STA PUENTE A-7 1940)	BG	2292
PUENTE (1970)	306.803	LACS MON IN WELL 10IN DN 16FT N C/L VALLEY BLVD DN C/L PROD TURNBULL CYN RD MKD PUENTE E-9A 1956	BG	2295
BASELINE (1965)	290.732	L+T N END 1ST CONC STEP OF HSE NO 137 50FT W C/L SANTA MARIANA AVE	BG	2296
BASELINE (1965)	283.699	L+T @ NW COR OF CONC WALK OF CHURCH BLDG 45FT E C/L SANTA MARIANA AVE	BG	2299A
BASELINE (1965)	279.311	L+SPK NR CTR CONC WALK TO HSE NO 13125 25FT N C/L DON JULIAN RD + 45FT W C/L SANTA MARIANA AVE	BG	2301
BASELINE (1965)	293.992	BT SPK N CB DON JULIAN RD 10FT W BCR + 50FT W C/L COBERTA AVE	BG	2303
BASELINE (1965)	294.532	L+T N CB DON JULIAN RD 2FT E BCR 18FT + 45FT E C/L COBERTA AVE	BG	2304
BASELINE (1965)	301.894	BT SPK NR N EDGE CONC DR TO HSE NO 13561 DON JULIAN RD 35FT S + 200FT W C/L INT W/ WORKMAN MILL RD	BG	2305A
PUENTE (1970)	300.889	L + T 5FT FROM END CONC WK TO HSE NO 13561 DON JULIAN RD 50FT N + 75FT W C/L INT W/ WORKMAN MILL RD	BG	2306
PUENTE (1970)	301.072	L+T CONC WLK TO HSE @ NE COR 3RD AVE + PROCTOR AVE 35FT N + 35FT E C/L INT MKD (BM)	BG	2307

QUAD-YEAR	ELEV	DESCRIPTION (INCLUDE QUAD AND YEAR IN DESCRIPTION)	BM NUMBER
PUENTE (1970)	300.374	BT SPK IN CONC WLK OF HSE @ SW COR 3RD AVE + PROCTOR AVE 35FT S + 20FT W C/L INT MKD (AZ 58)	BG 2308
PUENTE (1970)	305.589	L+BN E CB 3FT N BCR @ NE COR TURNBULL CANYON RD + PROCTOR AVE 72FT N + 30FT E C/L INT MKD (BM)	BG 2310
PUENTE (1970)	306.812	L+SQ HD SPK CONC WINGWALL @ NW COR TURNBULL CANYON RD + PROCTOR AVE 27FT N + 27FT W C/L INT MKD (AZ 13)	BG 2311
PUENTE (1970)	304.540	CS MON IN WELL 12IN DN @ C/L INT TURNBULL CANYON RD + DON JULIAN RD MKD (PUENTE D 10A)	BG 2313
PUENTE (1970)	308.268	CS MON IN WELL 8IN DN @ C/L PROD TURNBULL CANYON RD 18FT S C/L SALT LAKE AVE MKD (PI)	BG 2314
BASELINE (1965)	290.238	RDBM TAG S CB 30FT S C/L GARVEY AVE @ ENT TO UNDERPASS OF RR 450FT E VALLEY BLVD	BG 2320
PUENTE (1970)	317.895	RDBM TAG IN CB 1FT S BCR 70FT S + 40FT E C/L INT SUNSET AVE + AMAR RD	BG 2369
BASELINE (1965)	334.634	RDBM TAG N CB 36FT W BCR 113FT W + 30FT N C/L INT FRANCISQUITO AVE + PUENTE AVE	BG 2445
PUENTE (1970)	312.910	L+BN N CB AMAR RD 5FT W BCR @ NW COR FEATHER AVE 40FT N + 66FT W C/L INT	BG 2451
PUENTE (1970)	312.572	L+PK N CB AMAR RD 3FT W BCR @ NW COR FEATHER AVE 40FT N + 66FT W C/L INT	BG 2452
PUENTE (1970)	310.845	RDBM TAG E CB VINELAND AVE 1FT S BCR @ SE COR AMAR RD 18FT E + 73FT S C/L INT	BG 2453
PUENTE (1970)	312.435	L+BRAD S CB AMAR RD 3FT W BCR @ SW COR MILLBURY AVE 40FT S + 57FT W C/L INT	BG 2454
PUENTE (1970)	320.546	RDBM TAG IN W CB BALDWIN PARK BLVD 1FT N BCR @ SW COR DALEWOOD ST 40FT W + 55FT S C/L INT	BG 2458
PUENTE (1970)	315.982	RDBM TAG E CB BALDWIN PARK BLVD 5FT N OF N END OF BRIDGE OVER WALNUT CRK 1FT S CATCH BASIN 27FT E C/L + 245FT S C/L BESS AVE	BG 2459
PUENTE (1970)	316.006	FC MON IN CONC WINGWALL @ NW COR OF BRIDGE OVER WALNUT CRK 33FT W C/L BALDWIN PARK BLVD + 312FT S C/L BESS AVE MKD (BM 91-20)	BG 2460
PUENTE (1970)	309.939	RDBM TAG IN CONC PLANTER WALL @ NW COR AIR REDUCTION CO PLANT 60FT E C/L BALDWIN PARK BLVD + 200FT N OF DR @ S END OF BLDG + 1200FT S TORCH ST	BG 2461
PUENTE (1970)	309.931	RDBM TAG IN CONC PLANTER WALL @ SW COR AIR REDUCTION CO PLANT 60FT E C/L BALDWIN PARK BLVD + 60FT N OF DR @ S END OF BLDG + 1400FT S TORCH ST	BG 2462
PUENTE (1970)	305.083	L+T BK OF CONC WLK 9FT S OF N END @ NW COR OF INTERNATIONAL HARVESTER CO BLDG 55FT E C/L BALDWIN PARK BLVD + 246FT S C/L TEMPLE AVE	BG 2463
PUENTE (1970)	304.888	L+T S EDGE OF CONC WK @ ENT TO INTERNATIONAL HARVESTER CO BLDG 40FT E C/L BALDWIN PARK BLVD + 330FT S C/L TEMPLE AVE	BG 2464
PUENTE (1970)	299.778	RDBM TAG N CB NELSON AVE 1FT E BCR @ NE COR BALDWIN PARK BLVD 20FT N + 65FT E C/L INT	BG 2465

QUAD-YEAR	ELEV	DESCRIPTION (INCLUDE QUAD AND YEAR IN DESCRIPTION)	BM NUMBER
PUENTE (1970)	299.511	RDBM TAG E CB BALDWIN PARK BLVD 1FT N BCR SE COR NELSON AVE 50FT S + 30FT E C/L INT	BG 2466
PUENTE (1970)	297.443	L+T S EDGE CONC WLK @ ENT TO BLDG NO 166 BALDWIN PARK BLVD 40FT E C/L + 305FT N C/L RAILROAD AVE MKD (BM)	BG 2467
PUENTE (1970)	297.155	L+T SW COR OF CONC SLAB 3FT S SPRINKLER STAND PIPE 45FT E + 226FT N C/L INT BALDWIN PARK BLVD + RAILROAD AVE MKD (BM)	BG 2468
PUENTE (1970)	307.976	L+BN E CB VINELAND AVE 1FT S BCR @ SE COR GIORDANO ST 20FT E + 45FT S C/L INT	BG 2469
PUENTE (1970)	302.615	BT SPK S CB TEMPLE AVE 3FT E CB RET @ SE COR VINELAND AVE 28FT S + 50FT E C/L INT	BG 2470
PUENTE (1970)	300.854	CS TRI STA MON IN WELL @ C/L INT TEMPLE AVE + VINELAND AVE	BG 2471
PUENTE (1970)	296.168	BT SPK E CB VINELAND AVE 7FT N BCR @ NE COR NELSON AVE 20FT E + 49FT N C/L INT	BG 2472
PUENTE (1970)	328.993	L+B S CB BARRYDALE ST 2FT W BCR @ SW COR PUENTE AVE 18FT S + 84FT W C/L INT	BG 2473
PUENTE (1970)	323.700	RDBM TAG S CB CAGLIERO ST 1FT E BCR @ SE COR PUENTE AVE 18FT S + 75FT E C/L INT	BG 2474
PUENTE (1970)	319.097	RDBM TAG W CB PUENTE AVE 1FT N BCR @ NW COR SAUDER ST 40FT W + 55FT N C/L INT	BG 2475
PUENTE (1970)	299.285	L+BN N CB MOCCASIN ST 8FT W BCR @ NW COR PUENTE AVE 18FT N + 90FT W C/L INT	BG 2477
PUENTE (1970)	296.289	RDBM TAG W CB PUENTE AVE 1FT N BCR @ NW COR NELSON AVE 56FT N + 42FT W C/L INT	BG 2478
BASELINE (1965)	343.043	CS MON IN WELL 8IN DN @ C/L INT FRANCISQUITO AVE + CALIFORNIA AVE MKD (RE 5869 CO ENG MON)	BG 2726
BASELINE (1965)	335.204	CS BR CAP MON FLUSH IN BASE OF TRAFFIC SIGNAL @ SW COR FRANCISQUITO AVE + PUENTE AVE 50FT W + 55FT S C/L INT MKD BM 16-10B	BG 2727
BASELINE (1965)	320.681	STATE HWY MON 12IN DN @ C/L INT GARVEY AVE + WACO ST	BG 2728
BASELINE (1965)	324.613	STATE HWY MON 12IN DN @ C/L INT GARVEY AVE + TRACY ST	BG 2729
BASELINE (1965)	310.873	RDBM TAG IN N CB 1FT W END OF CB TO RICHFIELD GAS STA @ NW COR FRAZIER ST + GARVEY AVE 65FT W + 20FT N C/L INT	BG 2732
BASELINE (1965)	310.069	RDBM TAG IN N CB 1FT FROM BCR @ NE COR GARVEY AVE + BESS AVE 35FT N + 20FT E C/L INT	BG 2733A
BASELINE (1965)	303.013	L+T SE CONC BASE OF TRANS TOWER 24707 @ NE COR GARVEY AVE + WESTCOTT AVE 120FT E + 55FT N C/L INT	BG 2734
PUENTE (1970)	297.536	L+N W CB 1FT N BCR @ NW COR EXLINE ST + DURFEE AVE 37FT N + 45FT W C/L INT	BG 2737
BASELINE (1965)	296.495	RDBM TAG N CB 1FT E BCR @ NE COR DURFEE AVE + GARVEY AVE 37FT W + 30FT N C/L INT	BG 2738A

OUT
OUT
OUT
OUT
OUT

QUAD-YEAR	ELEV	DESCRIPTION (INCLUDE QUAD AND YEAR IN DESCRIPTION)	BM NUMBER
BASELINE (1965)	273.988	FC MON 6IN DN @ SE COR BRIDGE B 144S 2ND C/L DON JULIAN RD + ABT 200FT E SANTA MARTINA MKD (RW 1964)	BG 2978A
BASELINE (1965)	388.449	CS MON IN WELL 10IN DN 9FT SLY C/L LOMITAS AVE + 0.4MI SELY WORKMAN MILL RD IN FRONT OF HSE NO 13858 MKD (BM 42-1 1954)	BG 2979A
BASELINE (1965)	287.331	RD HD SPK N CB 9FT W BCR @ NW COR LOMITAS AVE + 5TH AVE 20FT N + 50FT W C/L INT MKD (AZ 490)	BG 2980
BASELINE (1965)	329.230	CS MON 1.5FT BACK OF CB @ NE COR GALE AVE + 9TH AVE MKD (BM 42-5 1954)	BG 2983A
BASELINE (1965)	328.940	L+BRAD E CB 0.4FT S BCR @ SE COR GALE AVE + CAT- LIN AVE 75FT S + 18FT E C/L INT	BG 2984
BASELINE (1965)	326.799	CS MON IN WELL 10IN DN ON SE COR GALE AVE + KAVIS AVE 57FT SELY + 5.5FT SLY C/L INT MKD (BM 1954)	BG 2985
BASELINE (1965)	332.829	CS MON FL IN C B ON SE COR HACIENDA BLVD + GALE AVE 22FT E BCR MKD (BM 38-13A 1963)	BG 2986
BASELINE (1965)	318.552	L+BN E CB 5FT N BCR @ SE COR VALLEY BLVD + HACIENDA BLVD 41FT E + 71FT S C/L INT MKD (BM)	BG 2987
BASELINE (1965)	318.193	RDBM TAG N CB 57FT E BCR @ NE COR VALLEY BLVD + HACIENDA BLVD 40FT N + 120FT E C/L INT	BG 2988
BASELINE (1965)	334.627	RDBM TAG W CB 1FT N BCR @ NW COR OLD VALLEY BLVD + ALBERT ST 46FT N + 18FT W C/L INT	BG 2989
BASELINE (1965)	342.222	LACS MON IN WELL 10IN DN ON C/L OLD VALLEY BLVD 12FT E C/L BAJA AVE USE E EDGE	BG 2990
BASELINE (1965)	353.553	L+BN E END CONC HDWL 18FT S C/L OLD VALLEY BLVD NR INT OF VALLEY BLVD MKD (BM)	BG 2991
BASELINE (1965)	353.811	RDBM TAG N CB NR W END C B 25FT N APPROX C/L N BARREL VALLEY BLVD NR INT OLD VALLEY BLVD	BG 2992
BASELINE (1965)	376.254	RDBM TAG N CB VALLEY BLVD 40FT N C/L @ E END C B 175FT W APPROX C/L ANAHEIM-PUENTE RD	BG 2993
PUENTE (1970)	315.733	CS MON IN WELL 18IN DN @ C/L INT AMAR RD + WILLOW AVE MKD (CO SUR RE 63) USE E EDGE	BG 2995
PUENTE (1970)	298.652	CSBM MON FL IN NW COR E WING WL OF CULVERT B 1022 5.5FT NE OF NLY CB VALLEY BLVD + ABOUT 60FT WLY PUENTE AVE MKD (BM 11-119A 1962)	BG 2997
PUENTE (1970)	295.688	RDBM TAG E CB 1FT S BCR @ SELY COR VALLEY BLVD + 3RD AVE 40FT E + 76FT S APPROX C/L INT	BG 2998
PUENTE (1970)	295.920	RDBM TAG IN CB 18FT W C/L VINE LAND AVE + 5FT N C/L PROD NELSON AVE	BG 2999
PUENTE (1970)	326.103	CS MON FL IN C B ON W SIDE HACIENDA BLVD +3FT S OF S CB PROD LOUKELTON ST MKD (BM 38-16A 1963)	BG 3000
PUENTE (1970)	334.024	CS MON FL SW COR C B ON NELY COR HACIENDA BLVD + FAIRGROVE AVE 75FT NLY + 42FT ELY APPROX C/L INT MKD (BM 38-17A 1963)	BG 3001
PUENTE (1970)	340.377	L+T S CB 30FT E BCR @ SE COR HACIENDA BLVD + MAPLEGROVE AVE 17FT S + 90FT E APPROX C/L INT	BG 3002
PUENTE (1970)	303.605	L+T W CB 3FT N BCR @ NW COR SUNSET AVE + AVE 55FT N + 36FT W APPROX C/L S END DRAIN	BG 3003

QUAD-YEAR	ELEV	DESCRIPTION (INCLUDE QUAD AND YEAR IN DESCRIPTION)	BM	NUMBER
PUENTE (1970)	327.634	CS MON IN WELL 8IN DN @ C/L INT SUNSET AVE + FAIRGROVE AVE MKD (C E MON RESET 1956)	BG	3004
PUENTE (1970)	389.978	L+SPK N CB 6FT E BCR @ NE COR TEMPLE AVE + MANGATE AVE MKD (BM)	BG	3005
PUENTE (1970)	419.720	CS BM MON 2FT N OF E SIDE CONC WEIR BOX 30FT N OF NW SIDE CONC RESERVOIR + 0.1MI E OF INT TEMPLE AVE + VALINDA AVE MKD (BM 8)	BG	3006
PUENTE (1970)	417.975	LACS MON 3IN UP 112FT S C/L TEMPLE AVE 2010FT W CS MON 3IN UP 112FT S C/L TEMPLE AVE 2FT W OF OF PI 2500FT W INT MANGATE AVE MKD BM 7 2FT XX 4-STRAND BARBED WIRE FENCE 2010FT W OF PI + S/O 2IN IP 3FT UP	BG	3007
PUENTE (1970)	397.387	L+SPK E CB 5FT N BCR @ NE COR TEMPLE AVE + GREYCLIFF AVE MKD (BM)	BG	3008
PUENTE (1970)	399.578	L+SPK W CB 9FT N BCR @ NW COR TEMPLE AVE + LANNY AVE MKD (BM)	BG	3009
PUENTE (1970)	360.690	L+T W CB 1FT N BCR @ NW COR 5TH ST + TEMPLE AVE	BG	3012
PUENTE (1970)	361.009	L+T E CB 1FT S BCR @ SE COR ECHELON AVE + MAPLE GROVE ST 55FT S + 18FT E APPROX C/L INT	BG	3013
PUENTE (1970)	360.990	L+T W CB 1FT S BCR @ SW COR ECHELON AVE + MAPLE GROVE ST 45FT S + 18FT W APPROX C/L INT	BG	3014
BASELINE (1965)	321.840	RDBM TAG 2FT E LY BCR 20FT S LY + 47FT E LY C/L INT GARVEY AVE + WACO ST	BG	3356
BASELINE (1965)	325.220	RDBM TAG 2FT S LY BCR 20FT E LY + 46FT S LY C/L INT GARVEY AVE + TRACY ST	BG	3357
BASELINE (1965)	325.095	COE MON FL IN CB @ BCR 74FT N LY + 20FT W LY C/L INT BALDWIN PARK BLVD + TRACY ST	BG	3358
BASELINE (1965)	329.899	RDBM TAG 10FT N LY BCR 58FT S LY + 41.5FT W LY C/L INT BALDWIN PARK BLVD + FRANCISQUITO AVE	BG	3359
BASELINE (1965)	330.407	RDBM TAG 10FT N LY BCR 60FT N LY + 40FT E LY C/L INT BALDWIN PARK BLVD + FRANCISQUITO AVE	BG	3360
BASELINE (1965)	379.781	L + BN @ NE COR FTG OF RR SIGNAL 80FT S + 125FT W C/L INT VALLEY BLVD + AZUSA AVE	BG	3622
BASELINE (1965)	395.996	CITY OF INDUSTRY MON FL 1FT S BCR 57FT S + 50FT W C/L INT AZUSA AVE + MAIN ST (MKD BM PC2)	BG	3623
BASELINE (1965)	395.861	RDBM TAG 1FT E BCR 18FT S + 90FT E C/L INT AZUSA AVE + SALAIS ST	BG	3624
BASELINE (1965)	432.678	L + T IN CHIS SQ 1FT S BCR 51FT S + 45FT E C/L INT AZUSA AVE + RENAULT ST	BG	3625
BASELINE (1965)	433.754	L + BN 1FT N BCR 58FT N + 14FT E C/L INT AZUSA AVE SERVICE RD + RENAULT ST	BG	3626
BASELINE (1965)	449.083	L + T 1FT S BCR 45FT S + 14FT E C/L INT AZUSA AVE SERVICE RD + GEMINI ST	BG	3627
BASELINE (1965)	450.189	L + BN 1FT S BCR 52FT N + 45FT E C/L INT AZUSA AVE + GEMINI ST	BG	3628
BASELINE (1965)	440.396	CITY OF INDUSTRY MON FL 6FT S BCR 66FT S + 45FT E C/L INT AZUSA AVE + GLENLOCH LN (MKD BENCH MARK PASS COVINA NO 6)	BG	3629

