

# Welcome - Bienvenidos

The Virtual Meeting on updating the Roadmap to a Sustainable Waste Management Future will begin shortly.

La reunión de la comunidad virtual sobre la actualización de el mapa vial hacia un futuro sostenible de gestión de residuos comenzará en breve.



# Zoom Controls Tutorial



The screenshot displays a Zoom meeting interface with a dark blue background. At the top, a green notification bar reads "You are viewing Moderator Go2Zero's screen". To the right, a "View Options" menu is open, showing "Zoom Ratio" at 100% (Original Size), "Exit Full Screen", and "Follow Presenter's Pointer" checked. A secondary menu lists zoom levels: "Fit to Window", "50%", "100% (Original Size)" (checked), "150%", "200%", and "300%".

In the center, a large white text overlay reads "Sustainable is Attainable" and "Waste Free Future County of Los Angeles". Below this, the text "X, 2020" is partially visible.

A red-bordered box highlights the "Audio Settings" panel. A large red arrow points from the left towards the "Spanish" option. The panel includes: "Off", "English" (selected with a radio button), "Spanish" (checked with a checkmark), and "Mute Original Audio" (checked with a checkmark). Below the panel are three icons: "Raise Hand", "Q&A", and "Interpretation".

At the bottom of the screen, there are icons for "Audio Settings", "Q&A", "Interpretation", and a red "Leave" button.



# Zoom Controls – Adjust Screen Size



✓ Check audio controls to ensure your computer audio is unmuted.



✓ Adjust screen size on your tablet or phone.





# Zoom Controls Tutorial – View Presenter



✓ Check audio controls to ensure your computer audio is unmuted.



✓ Adjust screen size on your tablet or phone.





# Roadmap to a Sustainable Waste Management Future: Roadmap 2020

August 11, 2020



# Outline

Tuesday, August 11, 2020  
6:30 p.m. – 7:30 p.m.

1. Los Angeles County Public Works Overview
2. Background
3. Roadmap 2020 Update
4. Questions and Comments

# Introductions



## **Coby Skye**

Assistant Deputy Director  
Los Angeles County Public Works  
cskye@pw.lacounty.gov

## **Patrick Holland**

Principal Engineer  
Los Angeles County Public Works  
pholland@pw.lacounty.gov



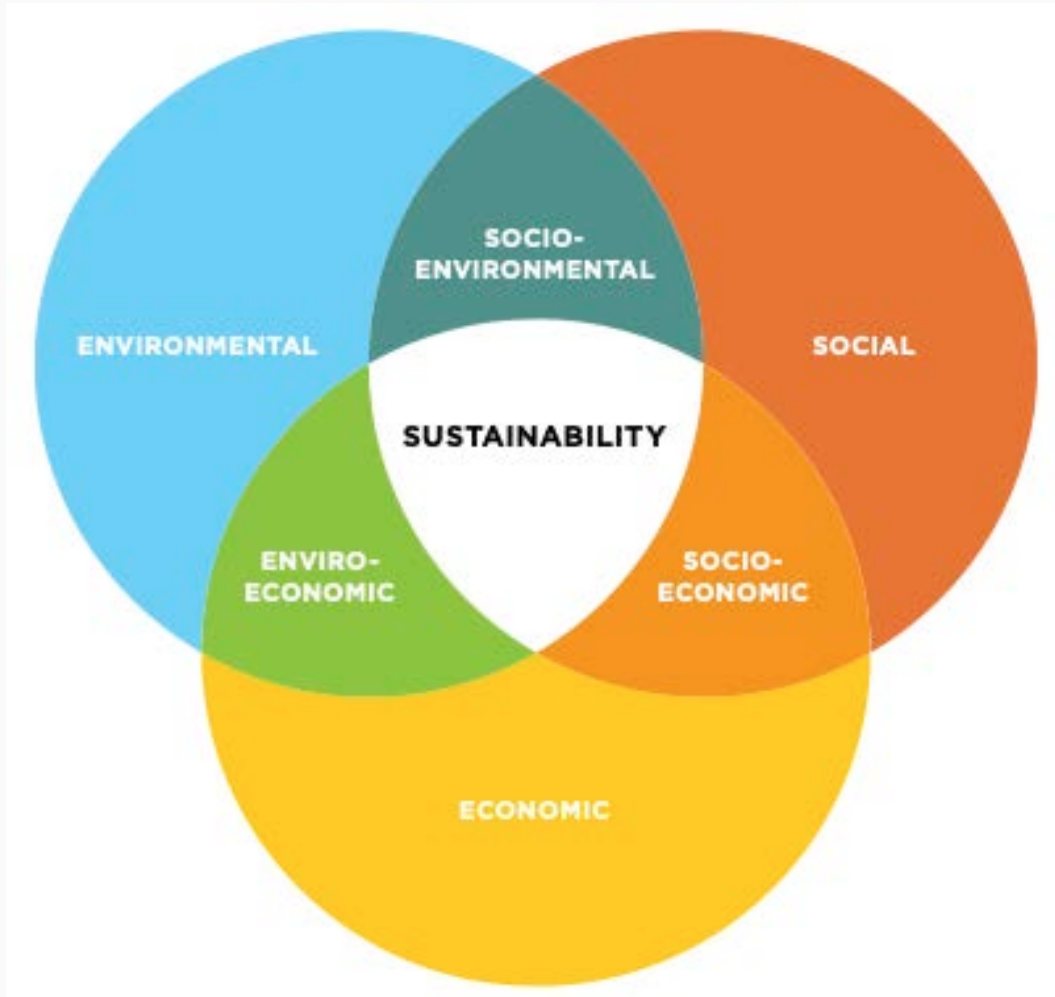
# Los Angeles County Public Works

## Core Service Areas

- Water Resources
- Transportation
- Environmental Services
- Construction Management
- Development Services & Emergency Management
- Public Contracting and Assets
- Administrative Services



# Components of Sustainability



## Environmental

- Focuses on reducing waste generation and disposal

## Economic

- Focuses on a system that is cost effective and efficient

## Social

- Focuses on empowering residents and businesses to be successful while building a sense of community

# Environmental Programs



## HHW/E-Waste Collection Events

The Household Hazardous and Electronic Waste Program provides Los Angeles County residents FREE and convenient ways to dispose of household hazardous waste that cannot be thrown in the regular trash.

For more information, visit [CleanLA.com](http://CleanLA.com)

## Food DROP

Food DROP provides resources for businesses to safely donate their excess edible food to fight hunger and reduce food waste in Los Angeles County.

For more information, visit [FoodDROPLA.com](http://FoodDROPLA.com)

LOS ANGELES COUNTY



Donation & Recovery  
Outreach Program

# Environmental Programs (continued)



## Smart Gardening Program

The Smart Gardening Program provides education on how to reduce and recycle organic waste and improve your lawn and garden. Attend a webinar to learn about composting, worm composting, grass recycling, water-wise gardening and fire-wise gardening.



## School Garden Program

The School Garden Program provides an opportunity for students and teachers to work together, learn how to grow their own food, get exercise and eat healthy.

For more information on these programs, visit [SmartGardening.com](https://SmartGardening.com)

# Environmental Programs (continued)



## School Education Programs

These programs educate elementary and secondary school students about how they can help the environment and make a difference in their communities by following the 4 R's (Reduce, Reuse, Recycle and Rethink).

For more information, visit [CleanLA.com](http://CleanLA.com)



## “Bring Your Own” Campaign

The Bring Your Own (BYO) initiative encourages the use of reusable items such as plates, cups, utensils, bags, etc. and increases awareness of the environmental impacts of single use items.

For more information, visit [CleanLA.com](http://CleanLA.com)

# Environmental Programs (continued)



## Conversion Technology

Promotes development of non-combustion conversion technology facilities to promote alternatives to landfills.

For more information, visit [SoCalConversion.org](http://SoCalConversion.org)

## Los Angeles County Materials Exchange (LACoMAX)

An online marketplace where parties can exchange items and materials at no cost. Users of this site can post or search listings of a wide variety of available and wanted materials.

For more information, visit [LACoMAX.com](http://LACoMAX.com)



# Roadmap to a Sustainable Waste Management Future



- What is the Roadmap and why is it important?
- 2014 adoption of original Roadmap
- Roadmap 2020

# Roadmap to a Sustainable Waste Management Future

## Roadmap to a Sustainable Waste Management Future

### Focus Areas

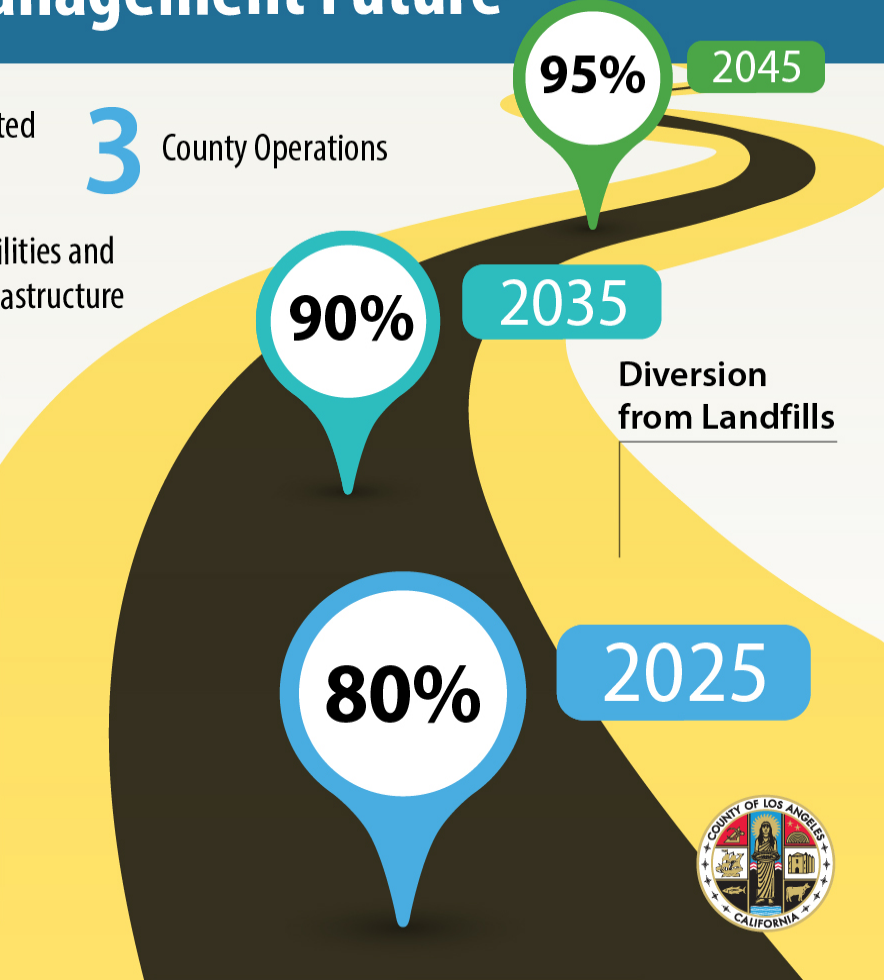
- 1 Regional/Countywide
- 2 County Unincorporated Communities
- 3 County Operations

### Strategies

-  Programs and Services
-  Measuring Results
-  Facilities and Infrastructure

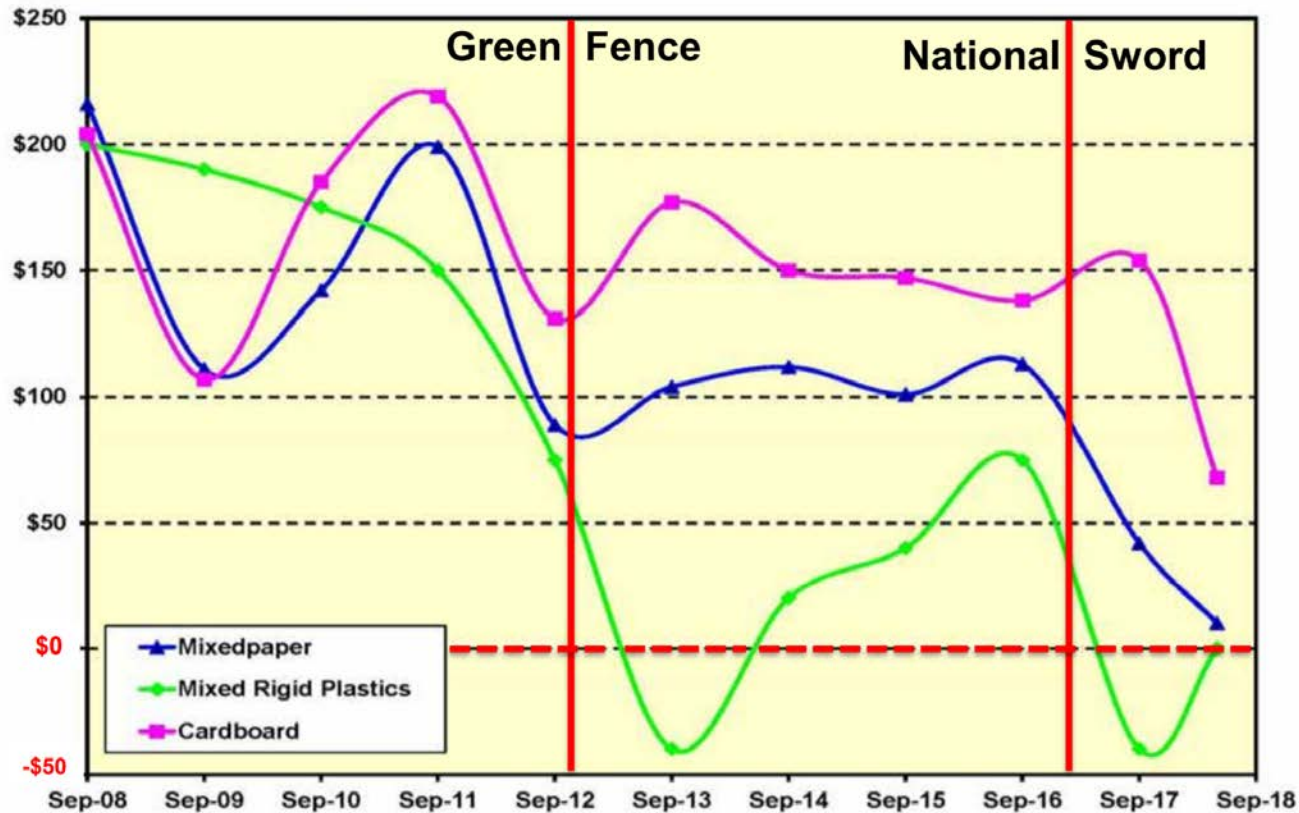
### Priority Issues

 Extended Producer Responsibility	 Household Hazardous and Electronic Waste	 Emergency and Regional Debris Management	 Organic Waste Management	 Conversion Technologies
 Homelessness	 Environmental Justice	 Outreach and Education	 Waste Prevention and Source Reduction	 Construction and Demolition Debris
			 Illegal Dumping	 Local Recycling Market Development



# Roadmap 2020 Update

## COMMODITY PRICES (\$/TON)



## Key Drivers for the 2020 Update

- Market Conditions



# Roadmap 2020 Update (continued)

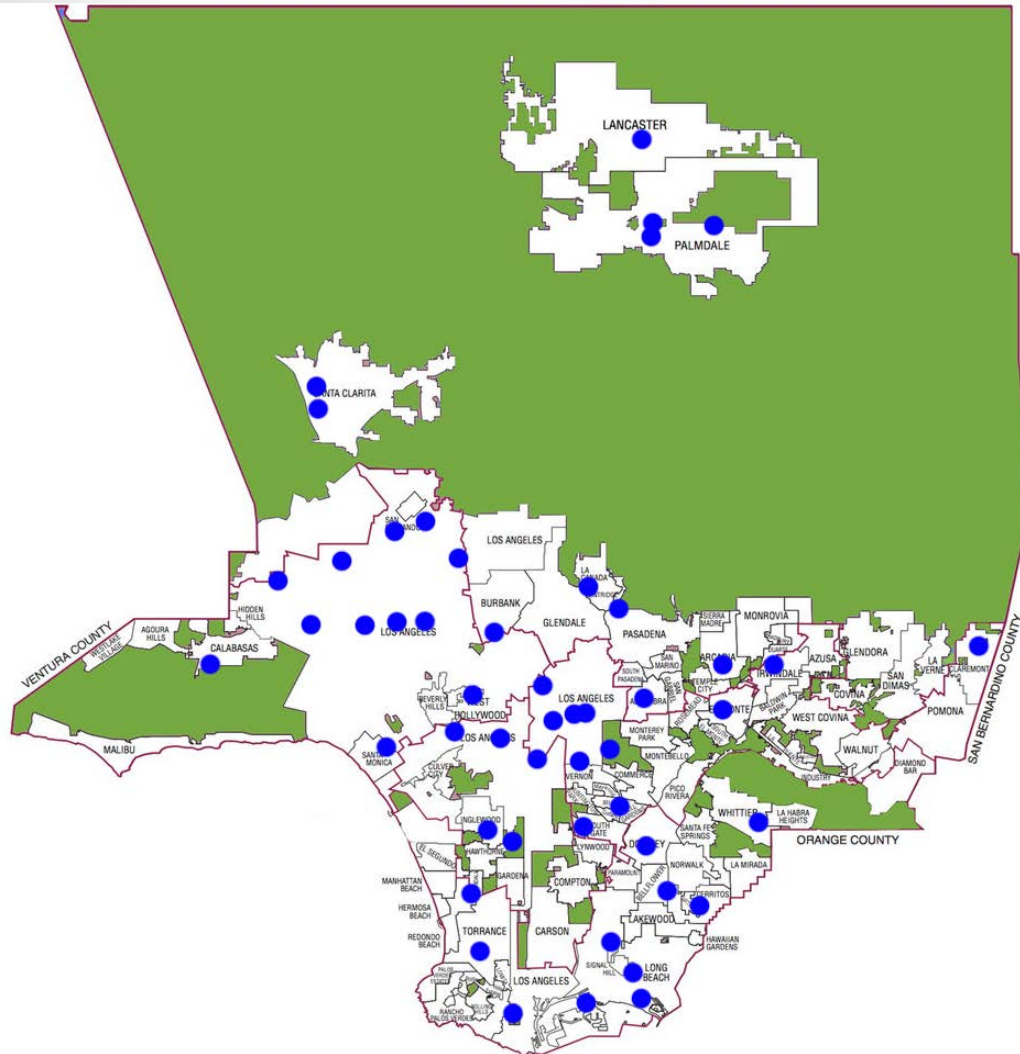
## Key Drivers for the 2020 Update (continued)

- State Mandates

Roadmap 2020 is designed to assist the County in complying with State and local waste diversion mandates that heavily weigh on the reduction of Greenhouse Gas (GHG) emissions.

- **Assembly Bill 32 (2006)**
- **Assembly Bill 1826 (2014)**
- **Senate Bill 1383 (2016)**

# Roadmap 2020 Update (continued)



## Roadmap 2020 Structure

- **Focus Areas**

 Regional/Countywide

 County Unincorporated Communities

 County Operations

# Roadmap 2020 Update (continued)

- **Roadmap Strategies**

- Programs and Services
- Measuring Results
- Facilities and Infrastructure
- ~~Outreach and Education~~



Incorporated into first three Strategies for Roadmap 2020

- **Initiatives**

- Mix of "upstream" activities that identify ways to keep materials out of the waste stream entirely and "downstream" activities that sustainably manage materials that are currently being disposed in landfills.

# Strategies and Initiatives

## **The three initiatives below pertain to the three focus areas:**

(Regional/Countywide, County Unincorporated Communities, and County Operations)

### **Strategy 1: Programs and Services**

- Initiative A.2: Support and develop reuse programs (e.g., reusable containers, redemption fees, repair cafes, material exchange, etc.).

### **Strategy 2: Measuring Results**

- Initiative A.2: Conduct surveys to determine program effectiveness and solicit feedback.

### **Strategy 3: Facility and Infrastructure**

- Initiative B.1: Encourage the development of organics diversion facilities, including composting, anaerobic digestion, and chipping/grinding operations.

# Roadmap Community Outreach Initiatives

- Develop a standardized and consistent communication plan promoting the 4 R's (Reduce, Reuse, Recycle, and Rethink) based on demographics, resources, and commercial and industrial businesses in targeted areas.
- Expand communication through social media.
- Educate businesses and government facilities on recycling programs that may help reduce their disposal costs and increase their recycling rate.
- Partner with town councils, homeowners' associations, chambers of commerce, community-based organizations, etc. to get messaging out.

# Priority Issues

- Waste Prevention and Source Reduction
- Local Recycling Infrastructure & Market Development
- Organic Waste Management
- Extended Producer Responsibility and Product Stewardship
- Conversion Technologies
- Household Hazardous and Electronic Waste

# Priority Issues (continued)

- Construction and Demolition Debris
- Illegal Dumping
- Environmental Justice
- Homelessness
- Emergency Management and Regional Debris Management Planning
- Outreach and Education

# Q & A





# Resources

- [RoadmapLA.com](http://RoadmapLA.com) – Public Works’ Roadmap website
- [pw.LACounty.gov](http://pw.LACounty.gov) – LA County Public Works website
- [lacounty.gov/sustainability/](http://lacounty.gov/sustainability/) - LA County Chief Sustainability Office
- [CleanLA.com](http://CleanLA.com) – Public Works’ environmental and recycling portal
- [FoodDROPLA.com](http://FoodDROPLA.com) – Food Donation and Recovery Outreach Program
- [CalRecycle.ca.gov](http://CalRecycle.ca.gov) – State of California’s lead recycling agency
- [search.Earth911.com](http://search.Earth911.com) – Search for recyclers near you

# Public Comments



To provide comments on  
Roadmap 2020 visit  
[RoadmapLA.com](http://RoadmapLA.com)



# Contact Us



**Thank You**  
**Questions or Comments?**  
**[Roadmap@pw.lacounty.gov](mailto:Roadmap@pw.lacounty.gov)**

