

YOU'RE PROTECTED!

**California Health And Safety Code,**  
Section 114432

Any food facility may donate food to a food bank or to any other nonprofit charitable organization for distribution to persons free of charge.

**California Health And Safety Code,**  
Section 114433

No food facility that donates food as permitted by Section 114432 shall be subject to civil or criminal liability or penalty for violation of any laws, regulations, or ordinances regulating the labeling or packaging of the donated product or, with respect to any laws, regulations, or ordinances, for a violation occurring after the time of donation.

**California Civil Code,** Section 1714.25(A)

Except for injury resulting from negligence or a willful act in the preparation or handling of donated food, no food facility that donates any food that is fit for human consumption at the time it was donated to a nonprofit charitable organization or a food bank shall be liable for any damage or injury resulting from the consumption of the donated food.

**United States Code, Bill Emerson Good Samaritan Food Donation Act, Title 42, Chapter 13A,** Section 1791 (C)(1)

A person or gleaner shall not be subject to civil or criminal liability arising from the nature, age, packaging, or condition of apparently wholesome food or an apparently fit grocery product that the person or gleaner donates in good faith to a nonprofit organization for ultimate distribution to needy individuals.



CONTACT US



For more information or to schedule a free consultation for your business, call Los Angeles County Public Works at:

1-888-CLEAN LA (1-888-253-2652)

email: [FoodDROPLA@dpw.lacounty.gov](mailto:FoodDROPLA@dpw.lacounty.gov)

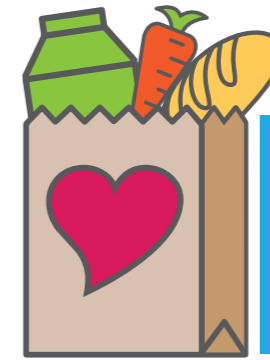
[www.FoodDROPLA.com](http://www.FoodDROPLA.com)

**ADDITIONAL RESOURCES:**

*Get additional recognition by the Environmental Protection Agency (EPA) and join the Food Recovery Challenge!*

For more details visit: [www.epa.gov/sustainable-management-food/food-recovery-challenge-frc](http://www.epa.gov/sustainable-management-food/food-recovery-challenge-frc).

For more information about how to safely donate your food, visit: <http://publichealth.lacounty.gov/eh/LACFRI/>



LOS ANGELES COUNTY

**FOOD  
DROP**

Donation & Recovery Outreach Program





## OUR MISSION & VISION

### OUR MISSION

To provide resources for businesses operating in the County unincorporated communities to safely donate their excess edible food to fight hunger in LA County and divert food waste from the landfills.

### OUR VISION

All businesses operating in LA County's unincorporated communities safely donate their excess edible food to feed people in need in LA County.

## WHY DONATE?

### HELP FIGHT HUNGER

Each year, Los Angeles County unincorporated communities toss 128,000 tons of food into the trash. The Department of Public Works has partnered up with local charities in LA County to offer businesses a food donation option through Food DROP.

### TAX DEDUCTIBLE

All businesses who donate to a 501(c)(3) that uses the food for the care of the ill, the needy, or infants can receive an enhanced tax deduction.



*1 in 7 living in Los Angeles County live with food insecurity.*

### ASSEMBLY BILL 1826

Under AB 1826, businesses that generate specified amounts of organic waste are required to arrange for organic waste recycling services or food donation. Learn more about AB 1826 by visiting

[www.FoodDROPLA.com](http://www.FoodDROPLA.com)

## GETTING STARTED!

### LA County CARES. Steps to Success:

#### 1. CHECK YOUR INVENTORY

Identify what types of food can be donated and get manager buy-in.

#### 2. ARRANGE FOR A MEETING

If you are located in an unincorporated community, Public Works will help you develop a food donation process at your location. To schedule a meeting with Public Works, call 1-888-Clean LA.

#### 3. REACH OUT

Set up an appropriate schedule with your non-profit.

#### 4. ENGAGE YOUR STAFF

Educate and train them about what foods to donate and the proper way to handle and store that food for continued success.

#### 5. START DONATING!

Follow the agreement you and your charity have set up to start the process!



## HOW TO SAFELY DONATE



*The LA County Department of Public Health supports safe food donation of surplus food.*

Follow Public Health's Guidelines for Safe Food Donation to minimize food safety risks. Make sure that your donated foods are:

- ✓ **AN APPROVED SOURCE OF DONATED FOODS**
- ✓ **REMAIN WITHIN TEMPERATURE CONTROL**
- ✓ **STAY PROTECTED FROM CONTAMINATION**

To learn more about how to safely donate, please visit: <http://publichealth.lacounty.gov/eh/LACFRI/> or call Public Health's Environmental Health Consultative Services (626) 430-5320 during business hours 8am-5pm.

### TAX DEDUCTION

Remember, food donations are tax deductible. Contact your tax advisor to find out how you can maximize your deduction for donating food.

