

Welcome

Thank you for joining us.

The meeting will start in a few moments.

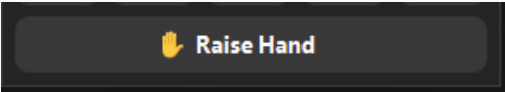


**Los Angeles County
SB 1383 Organic Waste and Edible Food
Capacity Reporting Meeting**

Website - <https://dpw.lacounty.gov/epd/swims/OrganicCapacityPlanning/>

**February 27, 2024
10:00AM – 11:30AM**

Reminders

- This meeting is being recorded.
- There will be an Open Discussion, during which, we encourage you to unmute yourselves to speak.
- Click “Raise Hand”  if you’d like to speak during the Open Discussion; we will call your name and then you can unmute yourself.
- Use the “Q/A” feature to type questions.
- If you are joining us by phone only, using your phone's dial pad, dial *6 to toggle mute/unmute or *9 to raise your hand during the Open Discussion.
- You can also email your questions to OrganicsPlanning@pw.lacounty.gov
- Links to presentation materials will be sent to you via e-mail at a later date.

Meeting Overview

I. Part I: County Public Works Panelists

- A. Overview of Organic Waste Capacity Submittal Requirements
- B. Overview of Edible Food Capacity Submittal Requirements
- C. Open Discussion

II. Part II: Guest Panelists

- A. Challenges Faced and Overcome During the Capacity Analysis Process (Jurisdiction)
- B. Capacity Available at Facilities and Procurement Opportunities (Operator)
- C. Open Discussion

III. Closing Remarks



Part I: County Public Works

Submittal Requirements

(Organic Waste Recycling Data Submittals)

- Methodology for calculating organic waste disposal, capacity and need:
 - CalRecycle's SB 1383 Organics Capacity Calculator tool
 - Export to Excel
 - No cell manipulation
 - No alternative forms

The screenshot shows the web interface of the CalRecycle SB 1383 Organics Capacity Calculator. The header includes the CalRecycle logo and navigation links for Programs, Recycle, Government, Business, Get Involved, News, About Us, and Help. The main form contains the following fields:

- Jurisdiction:** Los Angeles-Unincorporated
- Other Area:** (empty)
- Total Population in Disposal Data Year:** 1,016,626
- Projected Population in 3 years:** 998,000
- Change in Population:** -1.8%

Below the fields, there is a note: "Press the 'Search' button and further calculation steps will appear below." and a "Search" button.

The screenshot shows the Excel spreadsheet output from the SB 1383 Organics Capacity Calculator. The spreadsheet is titled "SB 1383 Organics Capacity Calculator" and contains the following data:

Step B: Select Disposal Year				
Disposal Data Year:	2021			
Period Covered:	Jan 1, 2022 - Dec 31, 2024			
Step B: Select Jurisdiction				
Jurisdiction:	Los Angeles-Unincorporated			
Other Area:				
Total Population in Disposal Data Year:	1,000,000			
Projected Population in 3 years:	1,200,000			
Change in Population:	20.0%			
Step C: Calculate Disposal Total				
Total Disposal in (Tons Per Year (TPY)):	1,000,000			
Total Population in Disposal Data Year:	1,000,000			
Total Per Capita Disposal (pounds per person per day (ppd)):	5.5			
Total Organic Material ADG/AC Disposal in TPY:	100			
Total Revenue and/or Disposal Decrease in TPY:	100			
Step D: Calculate Projected Disposal Totals				
Projected Population in 3 years:	1,200,000			
Total Per Capita Disposal (pounds per person per day (ppd)):	5.5			
Total Projected Disposal in 3 years (TPY):	1,204,500			
Step E: Calculate Projected Organic Disposal				
Total Projected Disposal in 3 years (TPY):	1,204,500			
Percentage of Organics in 3 years (%):	1.31%			
Waste Characterization Materials				
Waste Characterization Material	Calrecycle Waste Characterization Estimate - Estimate of Percent of Total Disposal	User Input Estimate of Percent of Total Disposal	Estimated Tons of Total Disposal	Primary Facility Activity Type
Total Paper	16.59%	0.00%	0	
Uncolated Corrugated Cardboard	5.16%	0.00%	0	
Paper Grocery Bags	0.07%	0.00%	0	
Other Paper Bags/Kraft Paper	0.41%	0.00%	0	
Newspaper/Newsprint Inserts	0.70%	0.00%	0	
White Office-Type Paper and Mail	0.40%	0.00%	0	
Magazines and Catalogs	0.41%	0.00%	0	
Folding Cartons and Other Paperboard Packaging	1.16%	0.00%	0	

Submittal Requirements

(Organic Waste Recycling Data Submittals)

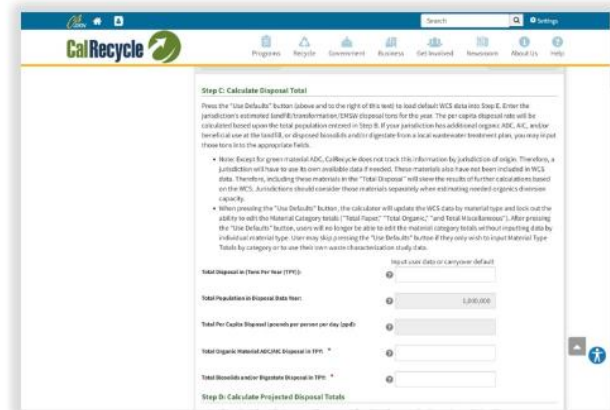
- Link to the calculator tool on County's website - <https://dpw.lacounty.gov/epd/swims/OrganicCapacityPlanning/>
- Forms must be sent via email to OrganicsPlanning@pw.lacounty.gov

Resources

(Organic Waste Recycling Data Submittals)

- Video Recordings on website with instructions
- Guidelines available on website and will be sent via email

Organic Waste Capacity Planning



Organic Waste Capacity Planning Calculator Tool



CalRecycle's Organic Waste Capacity Planning Website

Guidelines for Submitting Organic Waste Recycling Capacity Planning Data (UPDATED!)

CalRecycle's Webinar - Capacity Planning for Organic Waste Recycling Tools

Important Dates

(Organic Waste Recycling Data Submittals)

- **Data Due Date (to County) – June 7, 2024**
- Next (3rd) meeting – late June 2024 (tentative)
- Resubmittal Due Date (to County) – July 12, 2024
- Official Due Date (to CalRecycle) – August 1, 2024
- Implementation Schedule Due Date (to CalRecycle) – November 2024

Role and Responsibilities of Jurisdictions and the County (Edible Food)



2024 Edible Food Recovery Capacity Planning

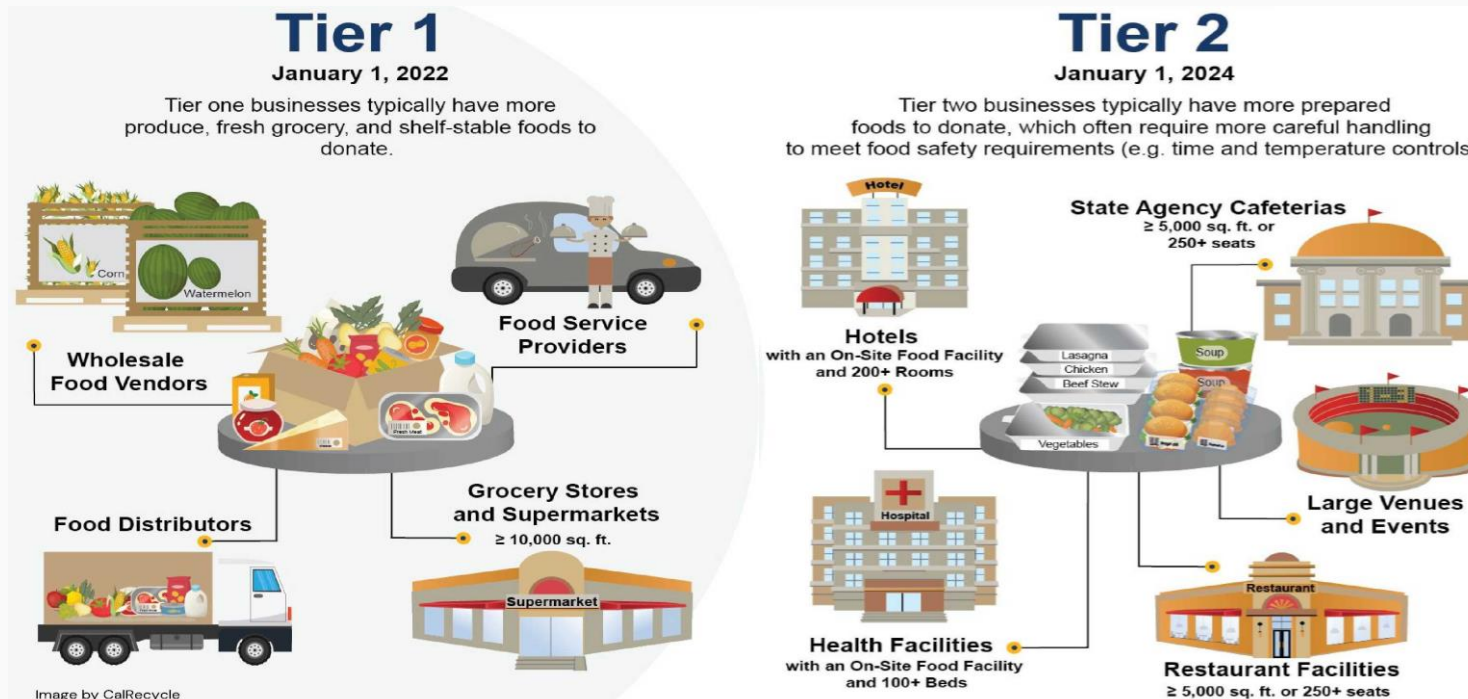
For Food Recovery Organizations (FROs):

- County is surveying FROs again
- Cities must identify any FRO changes

Submittal Requirements & Important Dates (**Edible Food Recovery Data Submittals**)

For Commercial Edible Food Generators (EFGs), Cities must:

- Identify the Tier One and Tier Two EFGs in their jurisdictions
- Submit the complete identified EFGs list to the County by **April 30, 2024**



Resources & Reminders about Identifying EFGs

Resources to identify EFGs:

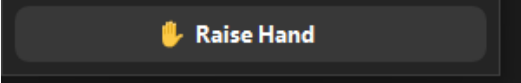
- Public Health (Food Permit List, and Restaurant & Market Inventory List)
- CalRecycle Convenience Zone data (Tier One Supermarkets)
- CalRecycle Office of Local Assistance and Market Development (State Agencies & Non-Local Entities)
- Hauler reports (customer list)
- Building permits (facility size)



Please note the following when identifying EFGs:

- **Food Service Providers** – With a primary address in your jurisdiction
- **Large Events and Large Venues** – Do not double count
- **Local Education Agencies** – All individual schools with on-site food facility

Open Discussion

- Click “Raise Hand”  if you’d like to speak during the Open Discussion; we will call your name and then you can unmute yourself.
- Use the “Q/A” feature to type questions.
- If you are joining us by phone only, using your phone's dial pad, dial *6 to toggle mute/unmute or *9 to raise your hand during the Open Discussion.
- You can also email your questions to OrganicsPlanning@pw.lacounty.gov

Part II: Jurisdiction and Operator

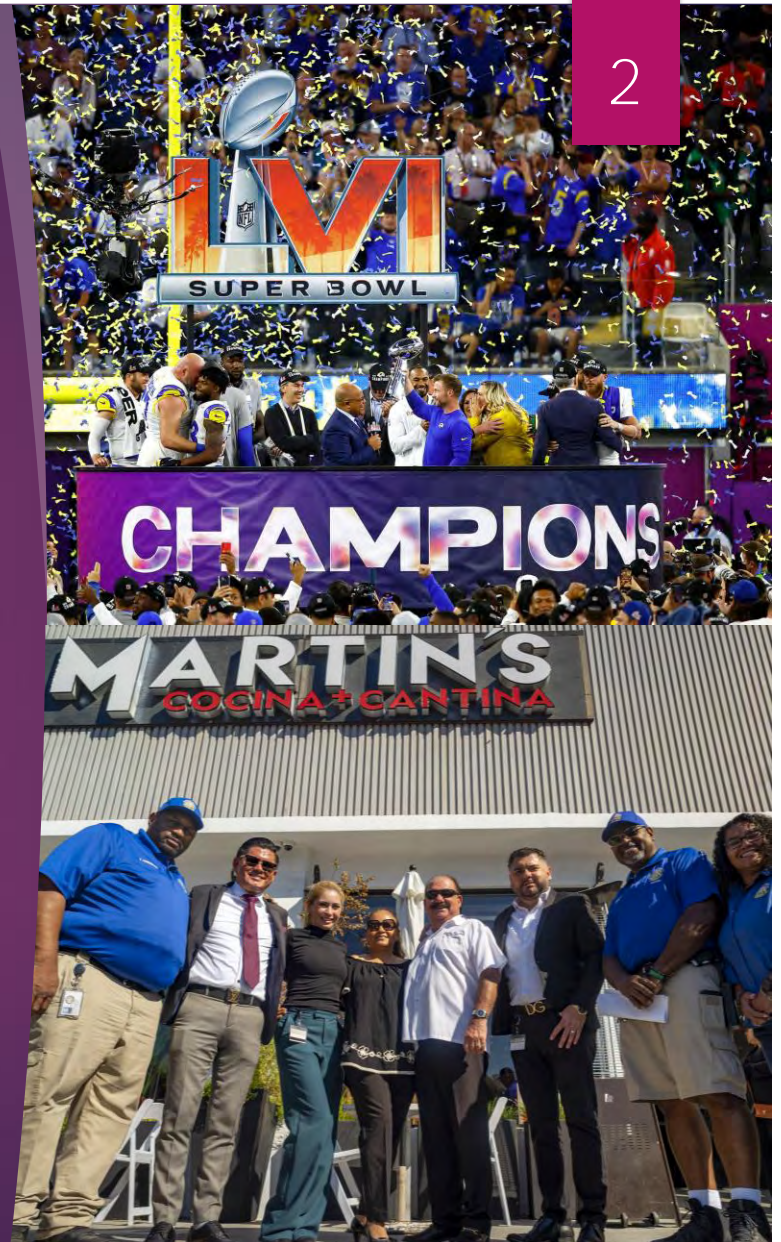
City of Inglewood SB 1383 In Action

- ▶ Angela Williams,
- ▶ CITY OF INGLEWOOD
 - ▶ Environmental Services Manager
- ▶ Los Angeles County SB 1383 Organics and Edible Food Capacity Planning Meeting - February 27, 2024



We are Inglewood

- ▶ City of Champions
 - ▶ Sports Central – Sofi Stadium
 - ▶ NFL (Superbowl 2022)
 - ▶ NBA
 - ▶ Mecca of Entertainment
 - ▶ Intuit Dome
 - ▶ Kia Forum
 - ▶ YouTube Theater
 - ▶ Cineopolis
 - ▶ Transportation Hub
 - ▶ Community Strong



Striving for Prosperity and Sustainability

- ▶ Transportation – The People Mover
 - ▶ Inglewood Transit Connector Project
- ▶ Event Venues striving for Zero Waste
 - ▶ SoFi Stadium and Republic
- ▶ Community Based Programming
 - ▶ Residents and Business are the heart of Inglewood
- ▶ Achieving Regulatory Compliance





Environmental Services

- ▶ Ensuring the Quality of Life in Inglewood
 - ▶ Sanitation
 - ▶ Diversion
 - ▶ Environmental Compliance

City Sanitation Officers



- ▶ City Sanitation Officers
 - ▶ Education
 - ▶ Technical Assistance
 - ▶ Waiver support
 - ▶ Enforcement
 - ▶ Champions for the beautification of Inglewood



Dedicated Partnerships

- ▶ Republic Services
 - ▶ Sustainability Advisors
 - ▶ SB1383 Franchise Agreement
 - ▶ Organics Services
 - ▶ Education and Outreach
 - ▶ Edible Food Recovery
 - ▶ Sustainability Advisors
 - ▶ Procurement
 - ▶ Reuse Programs
 - ▶ Reporting
 - ▶ Enforcement



The advertisement features the Republic Services logo (a red recycling symbol) and the text "REPUBLIC SERVICES" in blue. To the right, it says "Inglewood, CA" and "Customer Care Center: 800-299-4898". The main image shows a Republic Services employee in a blue and yellow uniform interacting with a family (a woman, a child, and a man) in a park-like setting. A blue Republic Services truck is visible in the background.

Republic Services of Inglewood, CA

Republic Services provides exclusive recycling and waste collection services for residential and commercial accounts for the City of Inglewood, CA. We offer one-stop shopping for all of the city's waste removal needs. Although we specialize in recycling and solid waste collection, our services go far beyond just emptying the trash bins.



Commercial Recycling and Organics

- ▶ Mandatory Roll-Out
- ▶ High Participation
- ▶ Business Engagement
- ▶ Multi-Family challenges

Residential Success

- ▶ 3 stream sorting success
- ▶ Low contamination
- ▶ Engaged community
- ▶ Clean Sweep Program
- ▶ Expectation – Excellence in Service.



Educating for Excellence



- ▶ SB 1383 Educational Video
- ▶ Events engagement for recycling and organics
- ▶ Community Based Programming
 - ▶ Clean Sweep
 - ▶ Newsletters
 - ▶ Zero Waste Community Booths



Doing it Right with Inglewood

- ▶ Thank you!
- ▶ Angela Williams
- ▶ awilliams@cityofinglewood.org



**LOS ANGELES COUNTY
SANITATION DISTRICTS**

Converting Waste Into Resources

Organics Capacity Available at LACSD

**LA Co. SB 1383 Organic Waste and Edible Foods
Capacity Planning Meeting**

February 27, 2024

Tom C. Fang, PE, BCEE
LACSD Energy Recovery



OUR SERVICE AREA

Wastewater Service Area

Kern County

Lancaster

Palmdale

Valencia

Saugus

Los Angeles
County

La Cañada

Whittier
Narrows

San Jose
Creek

Pomona

Los
Coyotes

JWPCP

Long
Beach

Orange County

Riverside County

Ventura County

Pacific Ocean

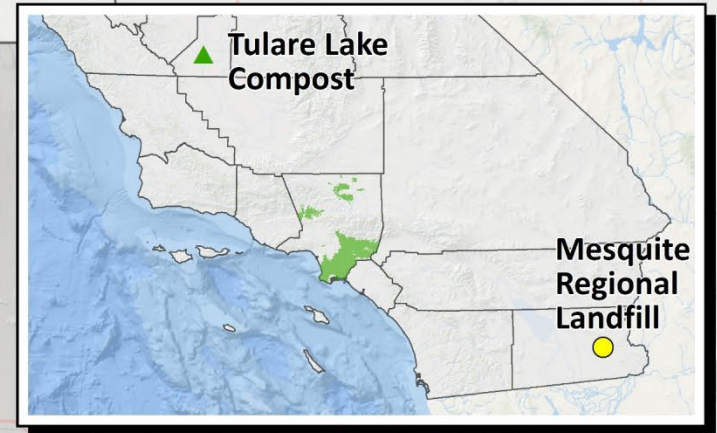
Ocean Outfall

- ▲ Water Reclamation Plant
- ▲ Wastewater Treatment Plant
- Trunk Sewers
- Sanitation Districts Service Area

- 24 Districts
- 78 Cities & Unincorp. areas
- 5.5 Million People
- 11 Treatment Plants
- ~50% of LA Co. sewage
- 1 Combined-Cycle Power Pl.



Solid Waste Facilities



2 Active Landfills
 3 MRF/Transfer Stations
 ~20% of LA Co. disposal

2 LF Gas-to-Energy
 1 Refuse-to-Energy
 2 Biosolids Composting

Legend

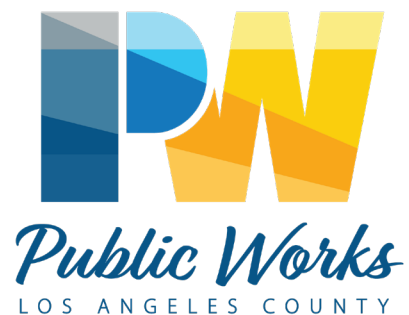
- Active Landfill
- Closed Landfill
- ▲ Composting Facility
- ▲ Material Recovery Facility / Transfer Station
- Recycle Center
- Refuse-to-Energy Facility

0 5 10 20 Miles

Date: 10/2/2020



We're here to serve you!



**LOS ANGELES COUNTY
SANITATION DISTRICTS**
Converting Waste Into Resources

- Develop regulations to implement State law & policies

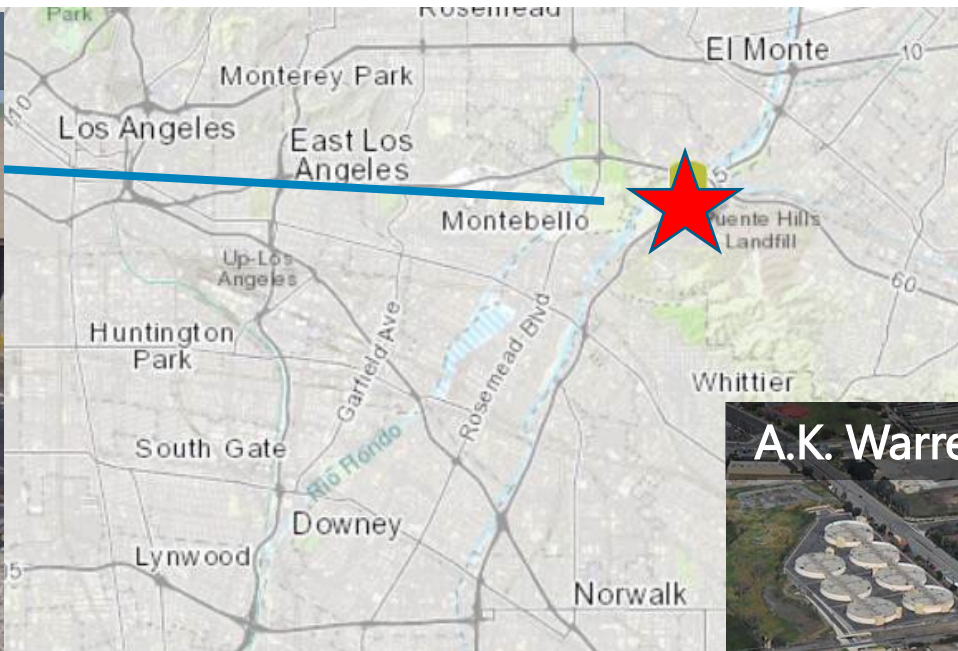
- Countywide organic/food waste disposal and processing capacity reporting to CalRecycle

- Sewage & Solid Waste
- Organic/food waste co-digestion
- Renewable products

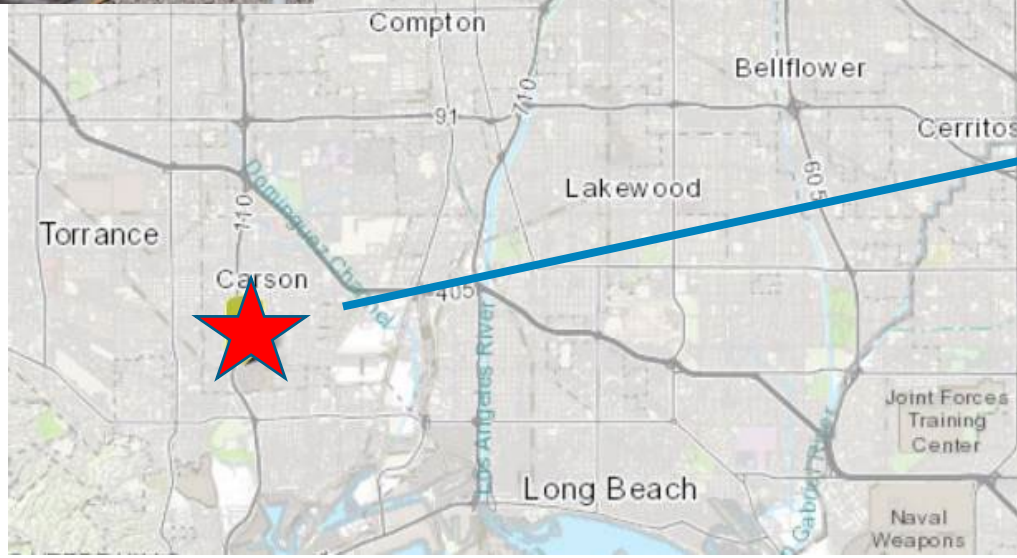
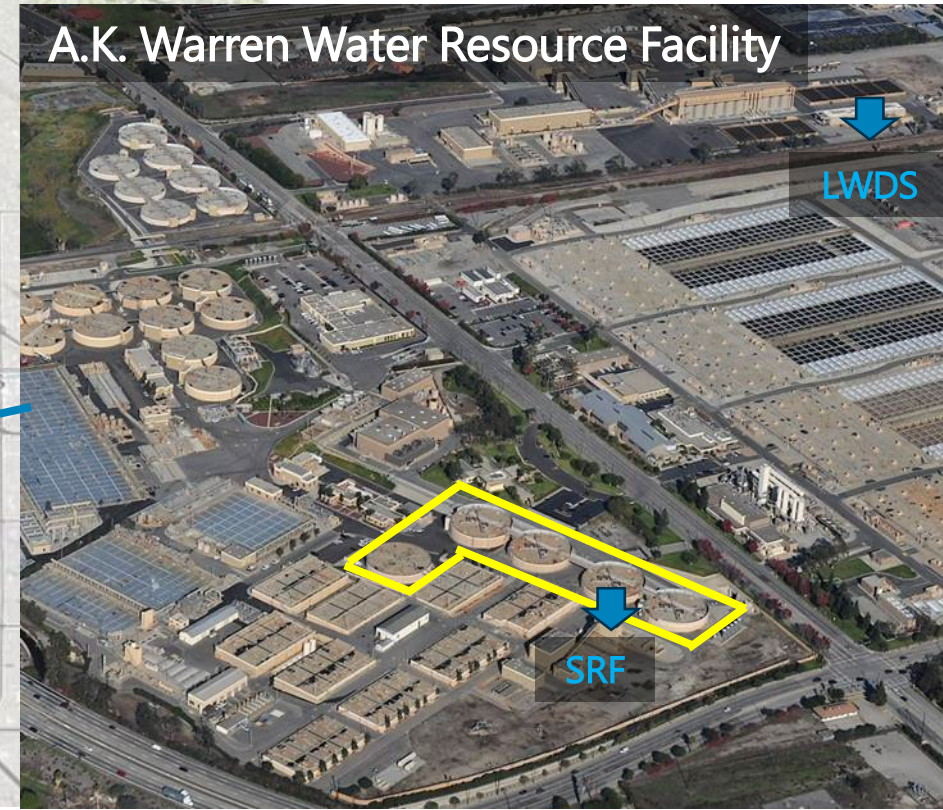


Food Waste Recycling

Puente Hills Materials Recovery Facility



A.K. Warren Water Resource Facility



Food Waste Processing



Food Waste Co-Digestion



Warren Facility



2014-2017, Full-Scale Demonstration

2020, Slurry Receiving Facility 1 and Flares

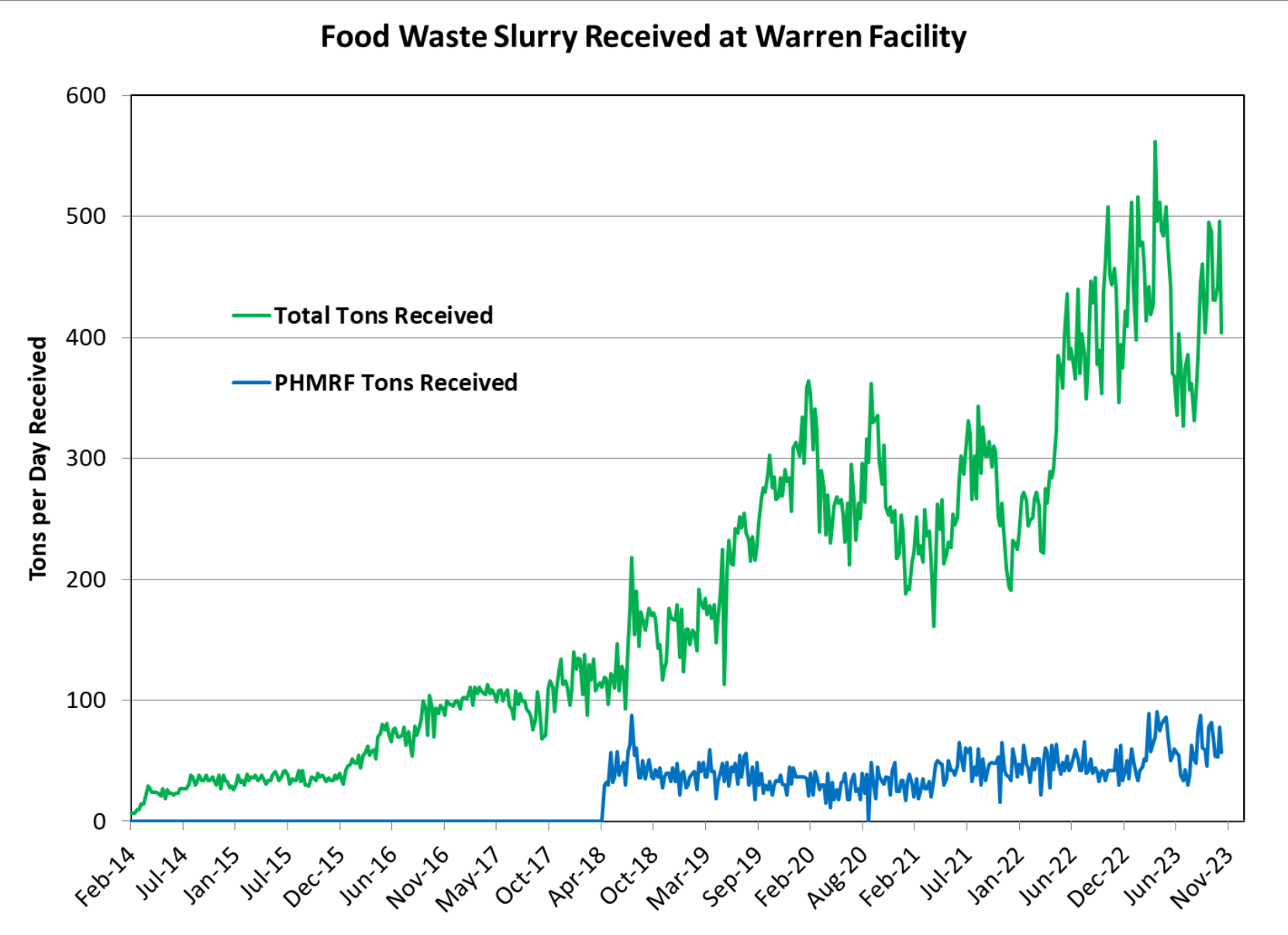
2022, Slurry Receiving Facility 2

2018, Liquid Waste Disposal Station

2021, Biogas Conditioning System 1



Food Waste Co-Digestion



600 TPD Capacity

400-450 TPD



Biogas to Electricity & Steam

Warren Facility - Total Energy Facility



Renewable Energy

Combined Cycle Power Plant
~20 MW



EV Charging



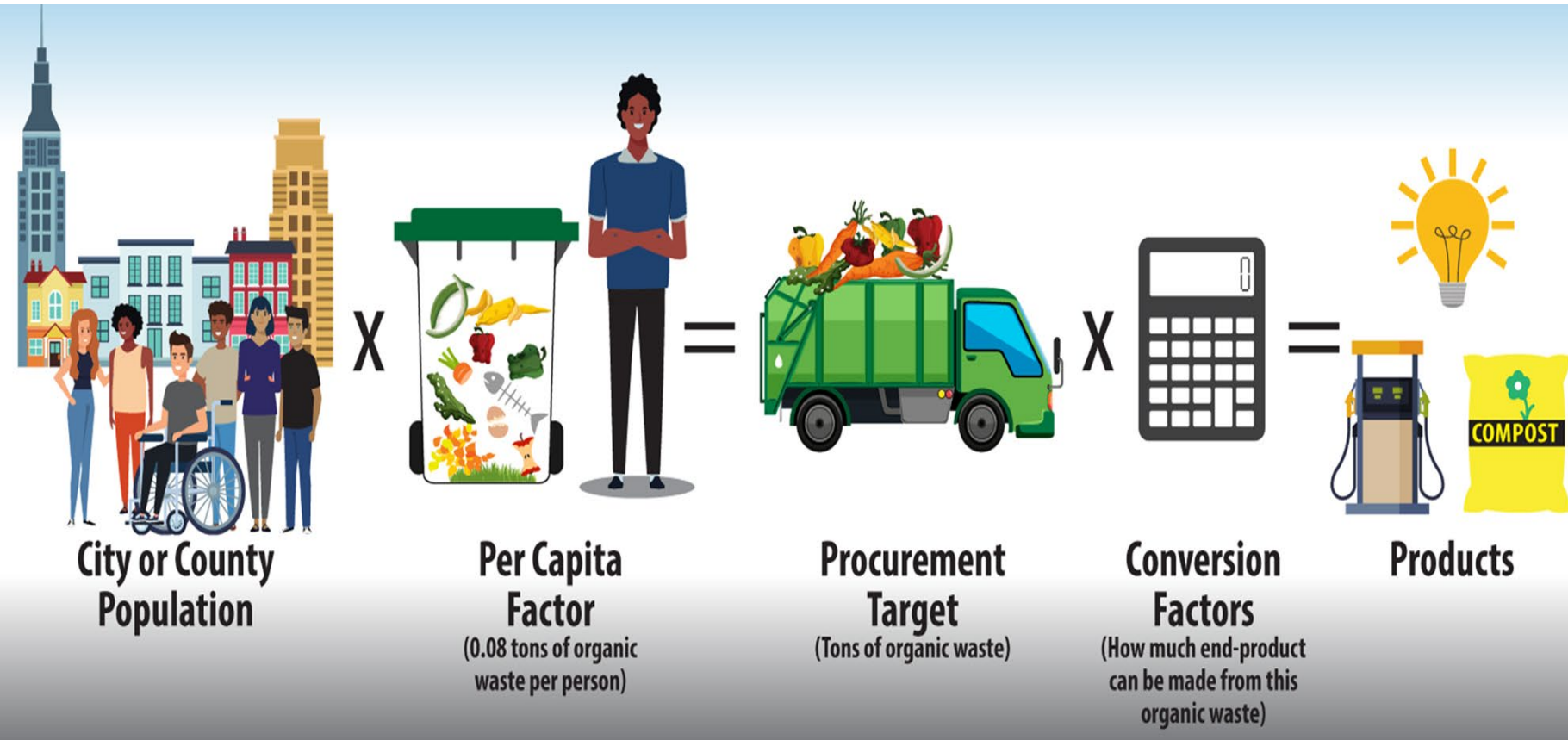
Biogas to Vehicle Fuel



Biosolids to Soil Amendment



SB 1383 Procurement Requirements

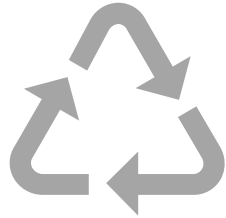


1 Ton of Organic Waste

- 21 DGE of RNG
- 242 kWh of electricity
- 22 Therms for heating
- 0.58 tons of compost
- 1 ton of mulch



How much does LACSD produce?



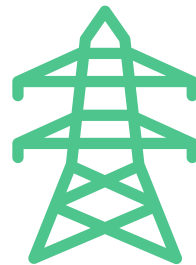
**Receives 400 tons per day
of organic waste**



**Products can serve 0.6
million residents**



**0.6 million diesel gallon
equiv. (DGE) per year**



**11,500 MW-hours of
electricity per year**



**1.1 million therms for
heating per year**



Program Direction

Station Expansion



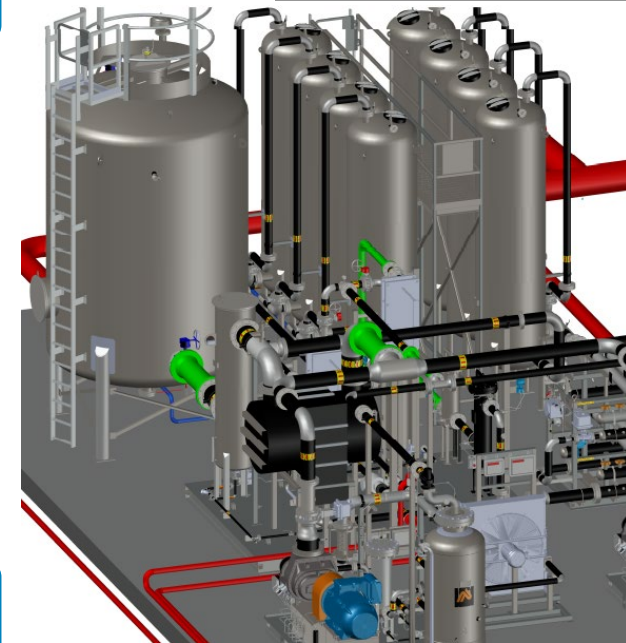
In Progress

- CNG Station Expansion
- Biogas to Biomethane
- Pipeline Injection
- Develop FW Customers
- Reassess Specs & Capacities
- Hydrogen Pilot

Next Steps

- Direct Service Provider Agreement.
- Off-Taker Agreements

BCS-2



Renewable Energy

Biomethane
9,500 GGE/day



Challenges



Food Waste Program

- Feedstock Volume
- Feedstock Quality
- Feedstock Contaminants
- Limited Qualifying Feedstock
- Competition and Economics





LOS ANGELES COUNTY
SANITATION DISTRICTS

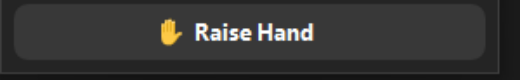
A Century of Service

Thank you!

Tom C. Fang
Supervising Engineer
562-908-4288 x2825
tfang@lacsds.org



Open Discussion

- Click “Raise Hand”  if you’d like to speak during the Open Discussion; we will call your name and then you can unmute yourself.
- Use the “Q/A” feature to type questions.
- If you are joining us by phone only, using your phone's dial pad, dial *6 to toggle mute/unmute or *9 to raise your hand during the Open Discussion.
- You can also email your questions to OrganicsPlanning@pw.lacounty.gov

Closing Remarks

SAVE THE DATES!

Data Due Date:

Deadline to submit data to County - **June 7, 2024**

Next Meeting:

Tentative Date – June 2024

Additional Questions:

OrganicsPlanning@pw.lacounty.gov