



LA County Chief Sustainability Office
Environment • Economy • Equity

CEO

Chief Executive Office

County of Los Angeles

Los Angeles County Cities Sustainability Summit September 30, 2021



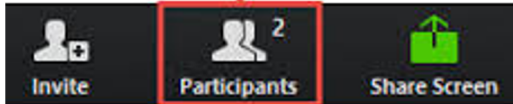
Tips for Maximizing our Virtual Experience Together

1) Keep your Video On (if Possible)

2) Share your Name and Organization

1

After launching the Zoom meeting, click on the "Participants" icon at the bottom of the window.



Participants (1)

RB Julie Mute Rename

2

In the "Participants" list on the right side of the Zoom window, hover over your name and click on the "Rename" button.



Rename

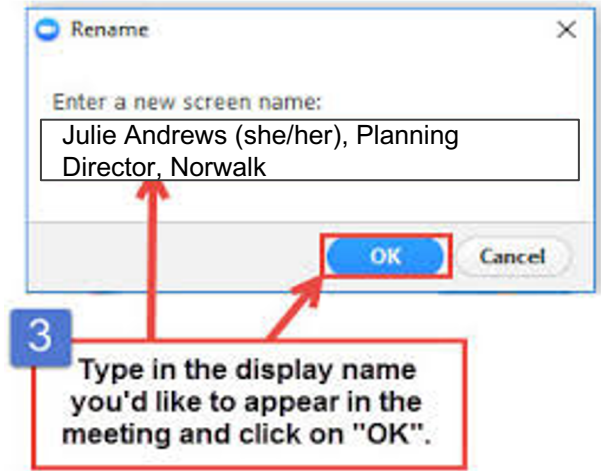
Enter a new screen name:

Julie Andrews (she/her), Planning Director, Norwalk

OK Cancel

3

Type in the display name you'd like to appear in the meeting and click on "OK".

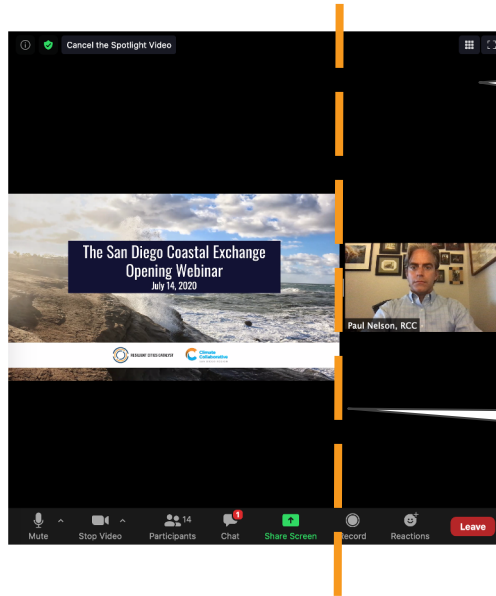


3) Please Mute Yourself During Larger Session (but Unmute During Small Group Sessions)

Tips for Maximizing our Virtual Experience Together



4) Adjust the Screen View to Fit your Preferences (for desktops or laptops)



Select "Speaker" to view the presenters only or "Gallery" to view all participants

Slide the bar to the left or right to adjust the size ratio of Presentation to Speakers / Participants

5) Chat Directly with our Tech Genius -**Adrian** - in the Zoom Chat for Support

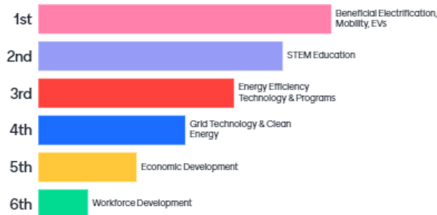
Tips for Maximizing our Virtual Experience Together



6) Be ready to open a web browser on your computer or phone, while keeping Zoom open, to use our online tools

Go to www.menti.com and use the code 3891 6767

Rank order the potential ComEd CoF resources & supports according to the contribution each could make to achieving your organization's objectives.



How can technology enhance language learning in and out of the classroom?



Welcome



- Land Acknowledgement
- Racial Equity Statement
- Recent Climate Events
- Acknowledgement of city partners and stakeholders
- Future regional convenings and cities coordination

LA County
Board of Supervisors
Chair Hilda Solis



Welcome - Agenda



- I. Welcome Remarks
- II. Report on OurCounty Milestones
- III. Report on State and Federal Climate and Infrastructure Funding
 - I. Question and Answer
- IV. LA County Climate Vulnerability Assessment (CVA)
 - I. Overview of State Regulatory Req. on Climate & Environmental Justice
 - II. Presentation/Demonstration of the CVA
 - III. Opportunities for Regional Collaboration
 - IV. Question and Answer
- V. Breakout Sessions
- VI. Closing Remarks

Breakout Sessions



I. Equitable Community-Driven Climate Planning

- I. **Kristen Torres Pawling**, Sustainability Program Director, LA County Chief Sustainability Office
- II. **Natalie Hernandez**, Associate Director, Climate Planning & Resilience, Climate Resolve

II. Strategies for Addressing Organics and Food Recovery

- I. **Primitivo Nunez and Julia Dolloff**, CalRecycle
- II. **Aric Rodriguez and Jennifer King**, LA County Public Works
- III. **Alex Fung**, Senior Management Analyst, San Gabriel Valley COG
- IV. **Doug Krauss**, Environmental Programs Manager, City of Hermosa Beach

III. Urban Cooling and Trees

- I. **Cindy Montanez**, CEO, TreePeople
- II. **Yujuan Chen**, Senior Manager of Urban Forestry Policy, TreePeople
- III. **Eileen Garcia**, Regional Manager, Southeast LA, TreePeople
- IV. **Graciela Ortiz**, Mayor, City of Huntington Park
- V. **Karina Macias**, Councilmember, City of Huntington Park

IV. Water Conservation and Efficiency

- I. **Bill McDonnell**, Water Efficiency Manager, Metropolitan Water District
- II. **Tracy Quinn**, Director, California Urban Water Policy, Natural Resources Defense Council
- III. **Minh Le**, GM, Energy & Environmental Services, LA County Internal Services Department

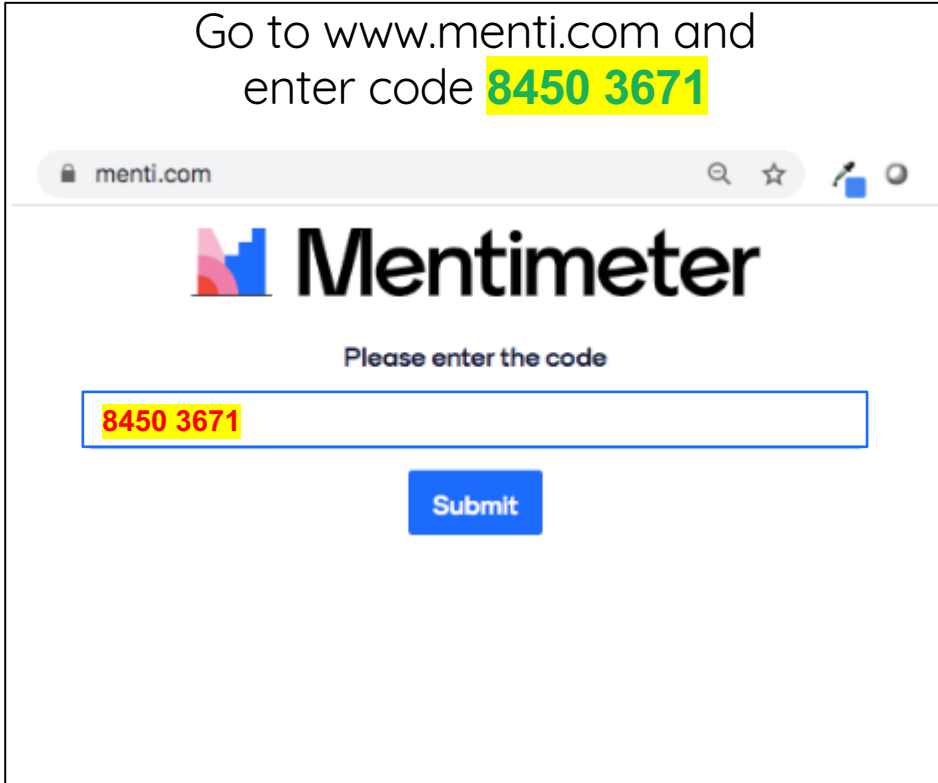
Mentimeter

What do you hope to get out of today's Summit?

Go to [Menti.com](https://menti.com) and enter code **8450 3671**

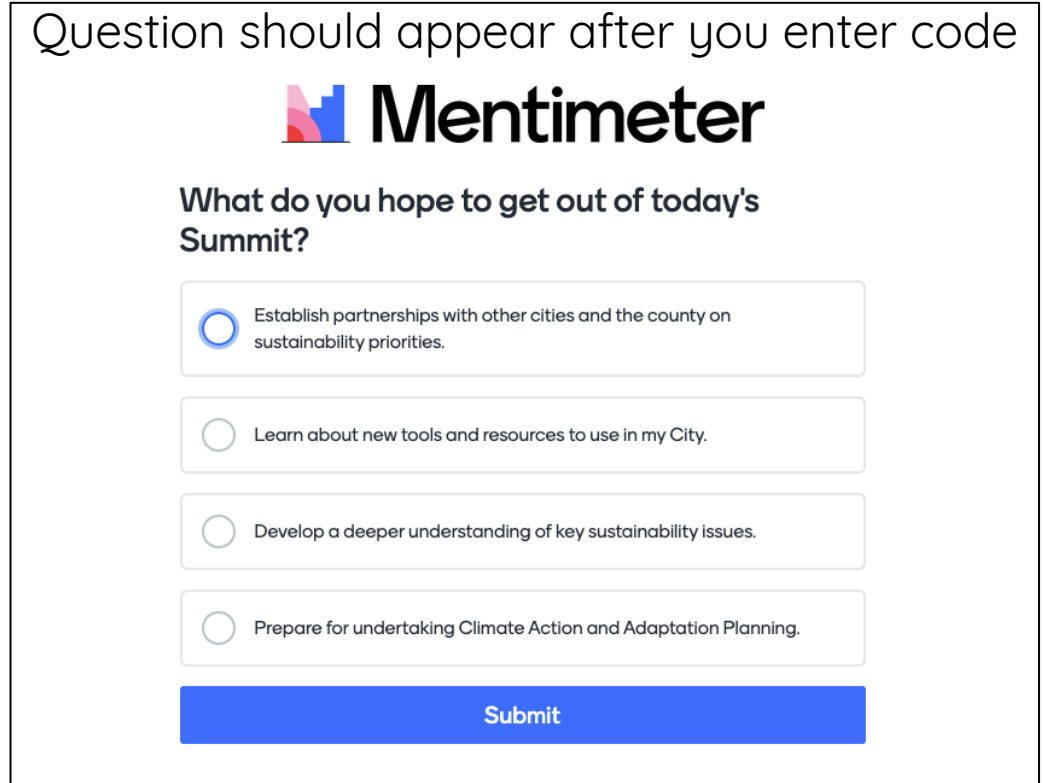
Mentimeter

Go to www.menti.com and enter code **8450 3671**



The screenshot shows a web browser at menti.com. The Mentimeter logo is displayed, followed by the instruction "Please enter the code". A text input field contains the code "8450 3671" in red text on a yellow background. A blue "Submit" button is located below the input field.

Question should appear after you enter code



The screenshot shows the Mentimeter poll interface. The question is "What do you hope to get out of today's Summit?". There are four radio button options:

- Establish partnerships with other cities and the county on sustainability priorities.
- Learn about new tools and resources to use in my City.
- Develop a deeper understanding of key sustainability issues.
- Prepare for undertaking Climate Action and Adaptation Planning.

A blue "Submit" button is located at the bottom of the poll.



OurCounty

Countywide Sustainability Plan

OurCounty Sustainability Plan

The County's Aims & Roles

The plan is:

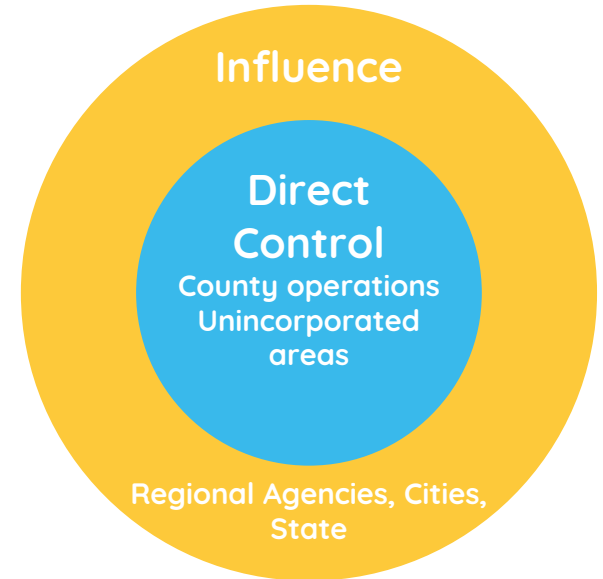
- Aspirational, Comprehensive, Long-Term, Regional, Actionable

Plan is analogous to a strategic plan

- Sets out a vision and strategy, but does not include a detailed implementation strategy

Plan mostly addresses areas of County's control

- Does include some areas where we can influence others (Metro, South Coast AQMD, etc.)



Guiding Principles for Equitable Engagement

- Ask, don't tell (aka: listen, don't talk)
- Intersectional approach
- Centering around environmental justice (EJ) and low-income communities and communities of color
- Early and deep involvement by community-based organizations (CBOs)



What's in the plan?

High Level Goals



Resilient and healthy community environments where residents thrive in place



Buildings and infrastructure that support human health and resilience



Equitable and sustainable land use and development without displacement



A prosperous LA County that provides opportunities for all residents and businesses and supports the transition to clean economy sectors



Thriving ecosystems, habitats, and biodiversity



Accessible parks, public lands, and public spaces that create opportunities for respite, recreation, ecological discovery, and cultural activities

High Level Goals



A fossil fuel-free LA County



A convenient, safe, clean, and affordable transportation system that expands mobility while reducing car dependency



Sustainable production and consumption of resources



A sustainable and just food system that enhances access to affordable, local, and healthy food



Inclusive, transparent, and accountable governance that supports participation in sustainability efforts, especially by disempowered communities



A commitment to realize OurCounty sustainability goals through creative, equitable, and coordinated funding and partnerships

Goals, Strategies, and Actions



Goals

Broad statement of a desired future state

“Equitable and sustainable land use and development without displacement.”

Strategies

More specific statement on the approach to achieve the goal

“Ensure that housing and infrastructure improvements do not facilitate displacement, particularly of disadvantaged communities.”

Actions

Detailed statements on the policy or program to fulfill the strategy

“Implement substantive resident and small business protection measures to avoid displacement impacts from community investments, including rent control, just cause eviction and right-to-return ordinances.”


Sample Targets



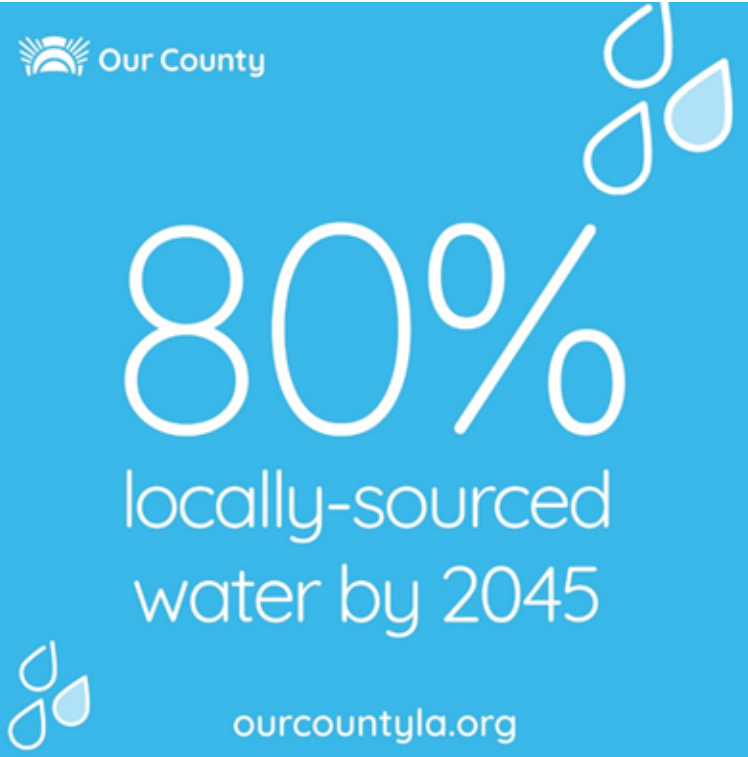
Bonjour Paris
Climate Agreement!
Carbon neutral
County operations by
2045



ourcountyla.org



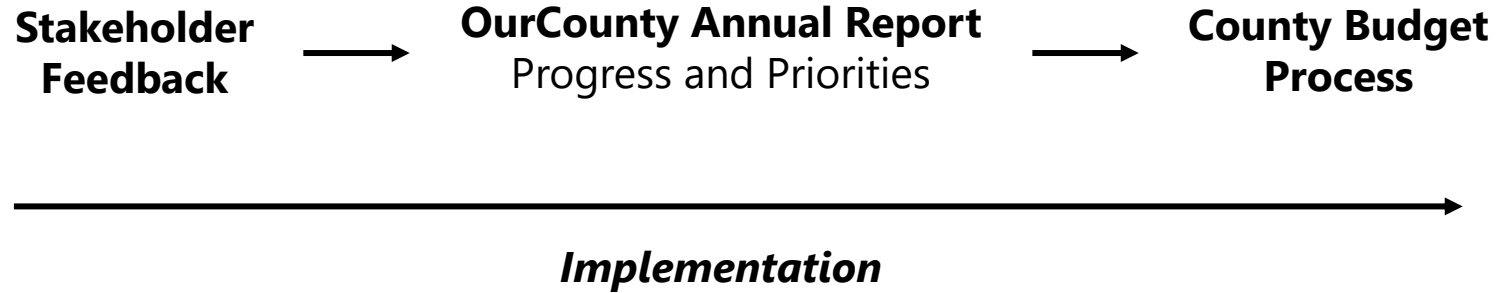
80%
locally-sourced
water by 2045



ourcountyla.org

Prioritization and Implementation

Prioritization Process



2021 Priorities List Highlights



- Social and physical climate vulnerability assessment
- Urban forest management plan
- Just transition plan and taskforce
- Barriers to observance and access for local tribes on County land
- Zero-emission fleet policy
- Single-use plastics





[OurCountyLA.org](https://www.OurCountyLA.org)

State and Federal Funding Opportunities

Angela C. Ovalle

CEO Legislative Affairs & Intergovernmental Relations

State Budget Climate Investments

- \$15 billion in investments
 - wildfire and drought challenges
 - climate resilience
 - sustainable agriculture
- The largest climate package in state history
- Energy (\$375 million) and Transportation (\$3.4 billion) packages deferred until 2022

State Budget Climate Investments

- Wildfire and Forest Resilience - \$1.52 billion
- Water and Drought Resilience - \$5.2 billion (over 3 years)
- Climate Resilience - \$3.69 billion (over 3 years)
- Sustainable Agriculture - \$1.1 billion (over 2 years)

State Budget Climate Investments

- Circular Economy - \$270 million (over 2 years)
- Cap and Trade Spending Plan - \$1.5 billion
- Parks

Infrastructure Investments and Jobs Act (H.R. 3684)

- \$973 billion over 5 years
- \$283.5 billion for transportation infrastructure
- \$550 billion in new investments

Climate (H.R. 3684)

- \$2.5 billion for Charging and Fueling Infrastructure Grants
- \$150 million for Reduction of Truck Emissions at Port Facilities
- \$6.42 billion for Carbon Reduction Formula Programs
- \$8.7 billion for the PROTECT Grant Program
- \$500 million for the Healthy Streets Program

Energy & Environment (H.R. 3684)

- \$5 billion to enhance the resilience of the electric grid
- \$3.5 billion for the Weatherization Assistance Program
- \$310 million for a new Carbon Utilization Grant Program
- \$3 billion for modernizing energy infrastructure
- \$3 billion for battery processing
- \$250 million for Energy Efficiency Revolving Loan Fund Capitalization Grant program

Resilience (H.R. 3684)

- \$2.5 billion for Transmission Facilitation Program
- \$1 billion for the Building Resilient Infrastructure and Communities (BRIC) Program
- Establishment of an intergovernmental Commission on wildfire mitigation and prevention

Q&A

Results from Cities Survey



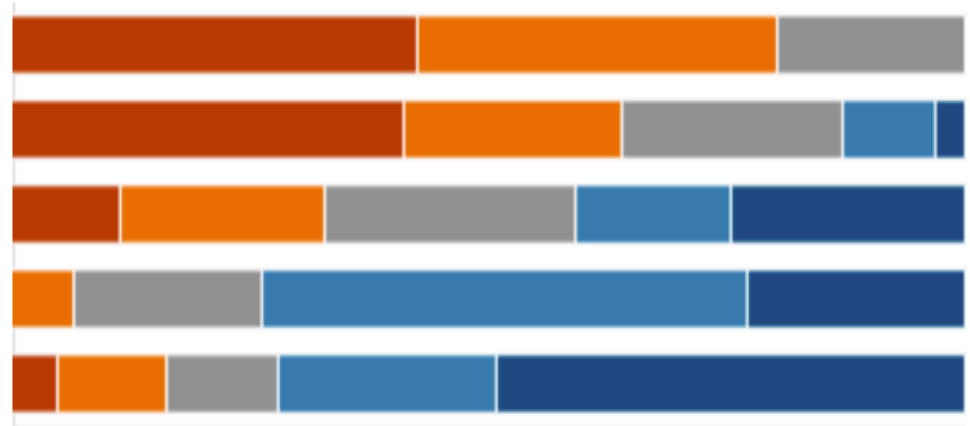
9. Please rank the following climate impacts in order of risk to your city.

[More Details](#)

Rank Options

First choice ■ ■ ■ ■ ■ Last choice

- 1 Drought
- 2 Extreme Heat
- 3 Wildfire
- 4 Inland Flooding / Heavy Preci...
- 5 Coastal Flooding / Sea Level R...



Mentimeter

Type in one word that describes your vision for the region's future - what word evokes your goals and aspirations for a more resilient LA County?

Go to [Menti.com](https://menti.com) and enter code **8450 3671**



LA County Climate Vulnerability Assessment (CVA)

**Cities Sustainability Summit
September 30, 2021**

Relevant State Requirements

- **SB 379:** Updating the General Plan Safety Element with climate adaptation and resilience strategies, including a vulnerability assessment.
- **SB 1000:** Updating the General Plan to include an environmental justice element to their general plans that outlines objectives and policies to reduce the health risks in disadvantaged communities.
- **SB 1035:** Requiring that after 2022 the Safety Element be reviewed and updated upon each revision of the housing element or local hazard-mitigation plan to address climate adaptation and resiliency.



Purpose



Source: OurCounty Plan

What makes this CVA unique



Source: Streetsblog LA, Sahra Subramanian

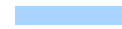
What is Vulnerability?

Climate Vulnerability

Exposure



Sensitivity



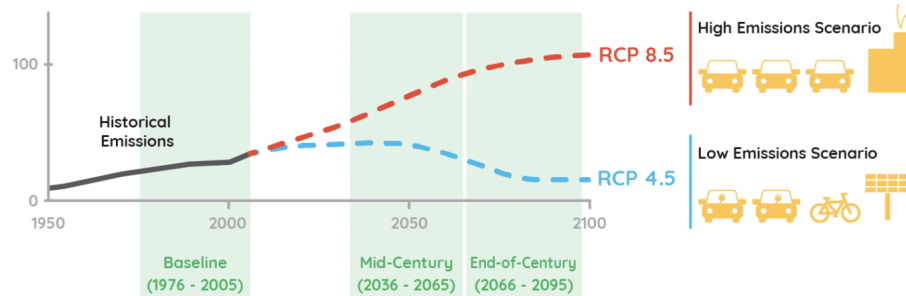
Adaptive Capacity

The nature and degree to which a system or sub-population is exposed to significant climatic variations.

The degree to which a system or sub-population is affected by climate-related stimuli.

The ability of a system or sub-population to adjust to climate change, to moderate potential damages, or to cope with the consequences.

Annual Global Anthropogenic Emissions: GtCO₂/year



Defining Social Vulnerability



Vulnerability is not an indicator of an individual’s weakness or incapacity to cope but rather an indicator of the factors, almost all of them outside of the individual’s control, that make people more at risk for negative impacts.

Climate hazards pose a risk to all County residents. However, various factors can make certain populations more susceptible than others. These factors include:

- **Inequities in infrastructure and access** to the benefits of education, economic opportunity, social capital, health protection services, and/or other services;
- **Institutionalized bias** or exclusion from political and decision-making power;
- Inequities in **environmental and living conditions** and health status
- Differences in individual health, age, and ability

*This framing is informed by the *2017 Advancing Climate Justice in California: Guiding Principles and Recommendations for Policy and Funding Decisions*

Climate hazards in LA County



Extreme heat is projected to increase in frequency and severity, impacting much of the County

Wildfire events are projected to be considerably larger, more frequent, and more destructive by mid-century

Droughts are happening more often and are lasting longer

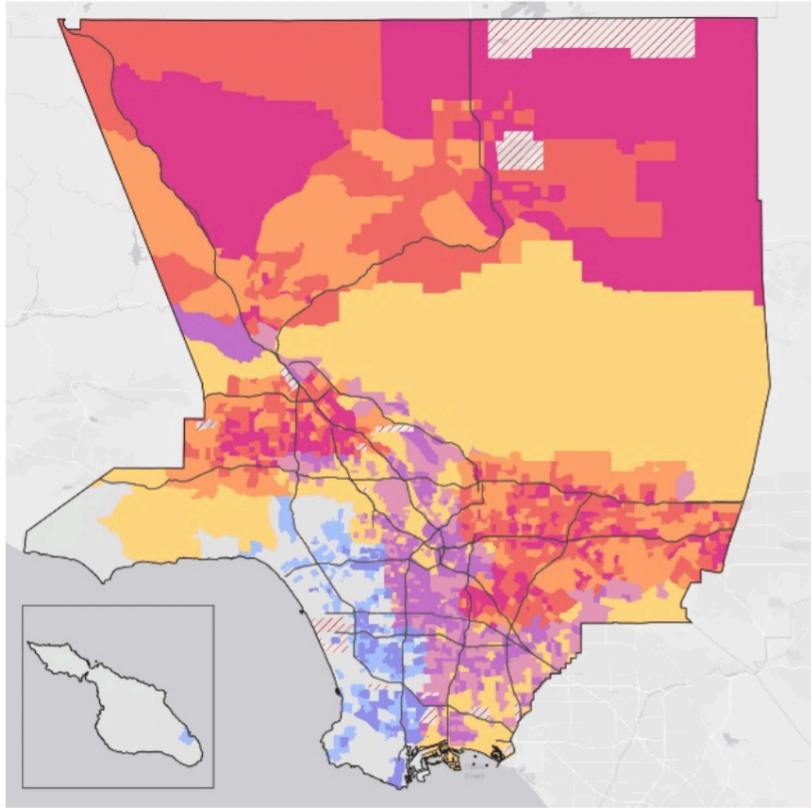
Inland flooding will likely increase in the future with drier springs and summers and wetter winters throughout the state

Coastal flooding events may become more frequent and severe, even with small increases in sea level rise

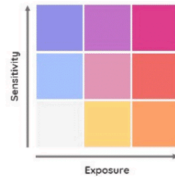
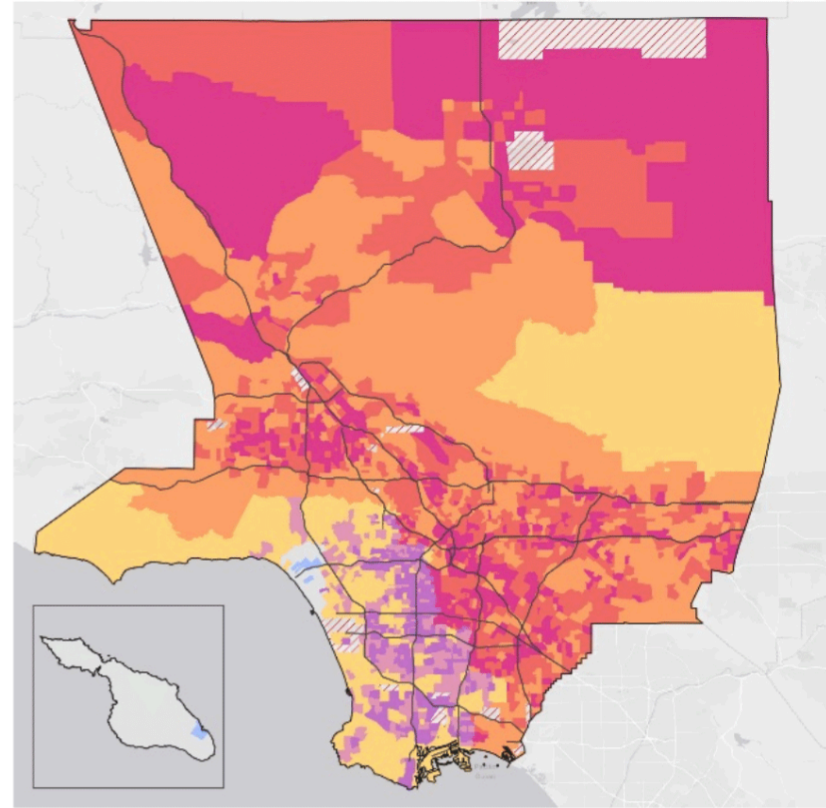
Extreme heat



Historical Baseline



RCP 8.5, Mid-Century



Extreme heat is represented by the 95th percentile daily maximum temperature.

Census tracts with no population

Sources: United States Census Bureau, Cal-Adapt, UC Berkeley, CEHTP and OSHPD, Los Angeles County ISD, SCAG.



*Freeway embankment fire threatens Granada Hills Service Station - June 2021
Source: Flickr, Los Angeles Fire Department*

40% of the population says they avoided going outside due to smoke last year

Source: LA Barometer

Extreme precipitation and inland flooding



*Kagel Canyon Precipitation Preparedness and Mudslide Prevention - Jan 2018
Source: Flickr, CEO Countywide Communications*

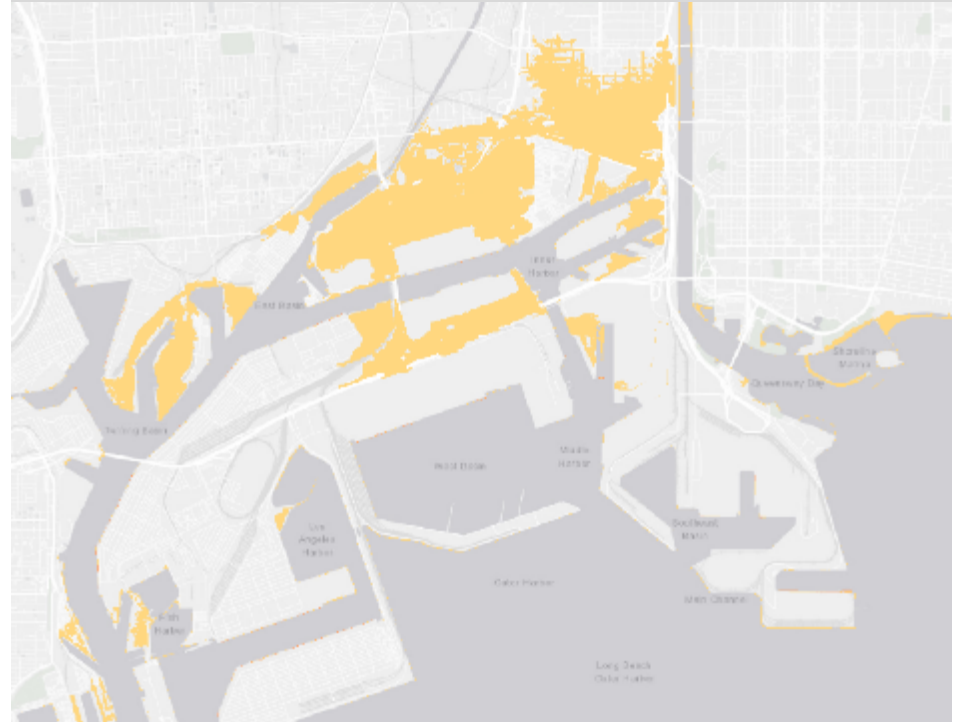
Coastal flooding




Marina del Rey area




Long Beach area



Coastal Flooding, 2.5 Foot Sea Level Rise

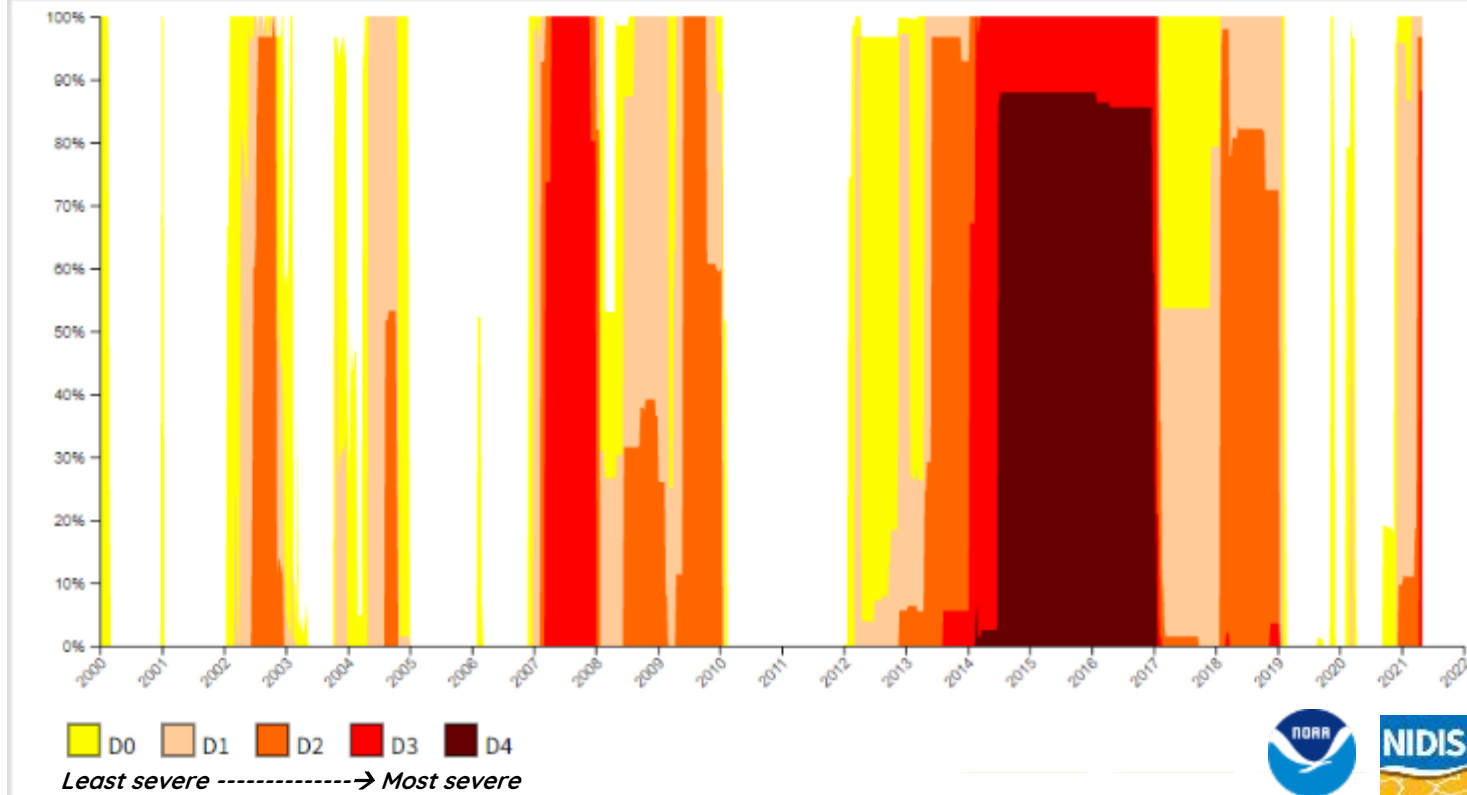
 Medium, 0 - 3.9 feet

 High, > 3.9 feet

Drought



Historical Conditions for Los Angeles County

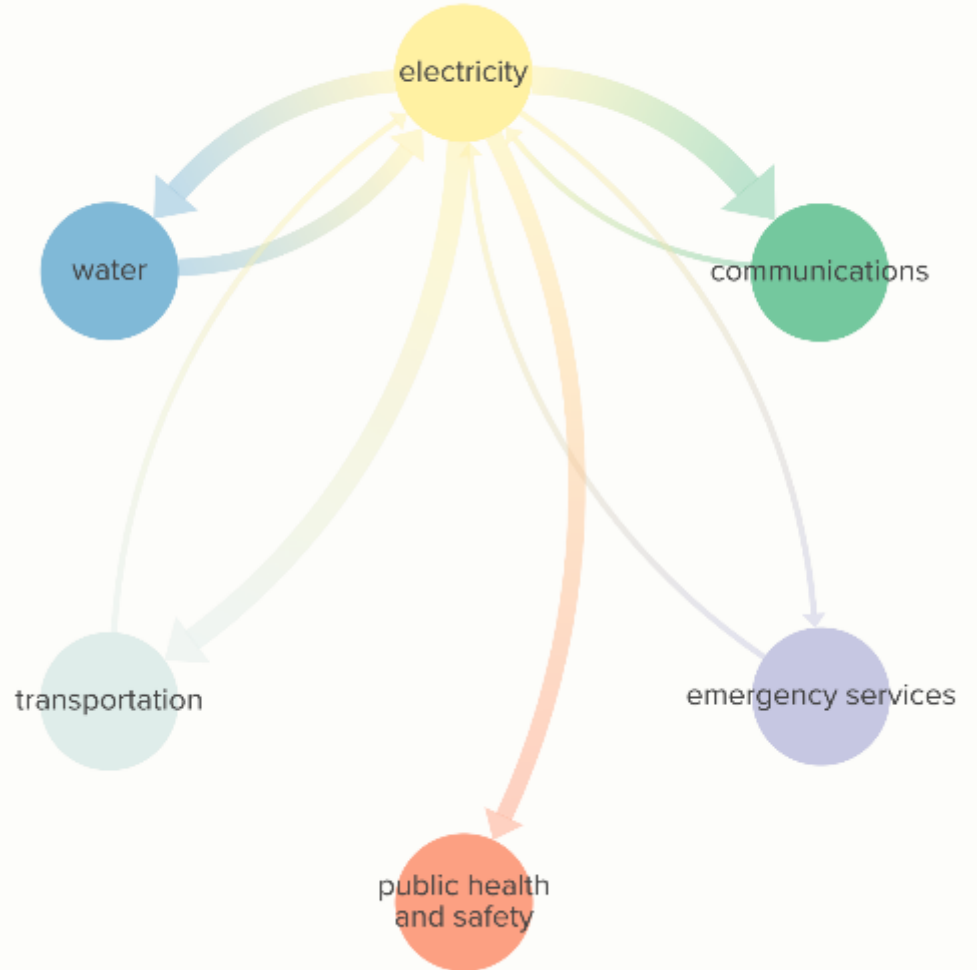


Droughts are happening more often and lasting longer



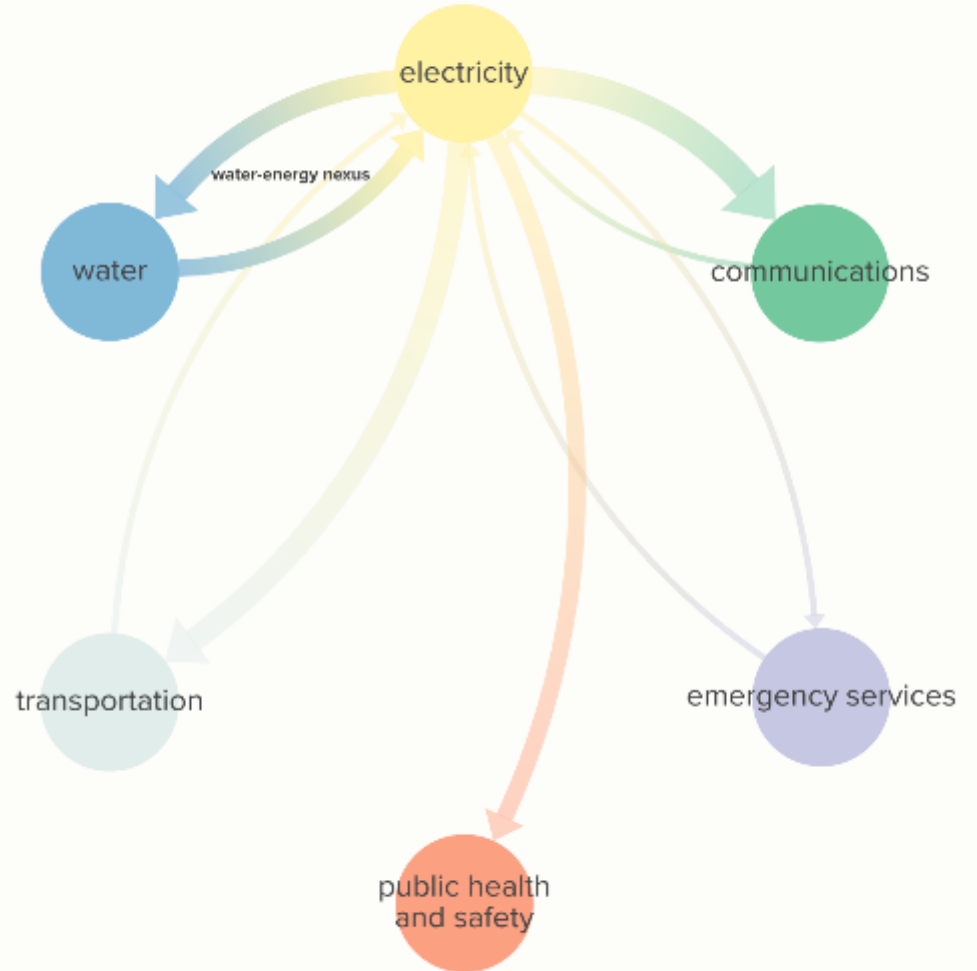
Electricity is critical

- Electricity strongly influences every other infrastructure sector, in many different ways
- Electrical power provision has the biggest direct impact on all other sectors



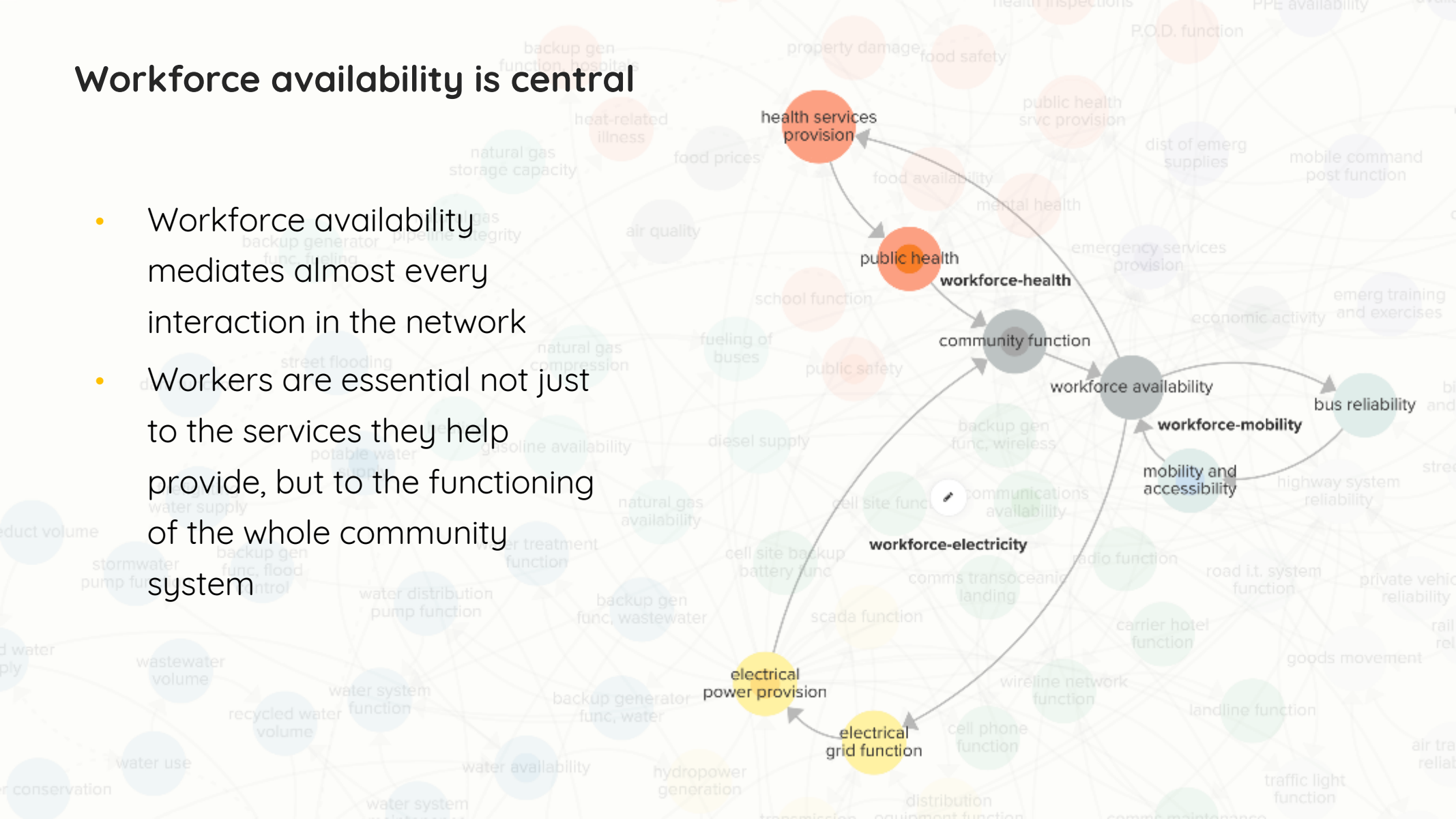
Electricity is critical

- Electricity strongly influences every other infrastructure sector, in many different ways
- Electrical power provision has the biggest direct impact on all other sectors
- Water is necessary to produce electricity



Workforce availability is central

- Workforce availability mediates almost every interaction in the network
- Workers are essential not just to the services they help provide, but to the functioning of the whole community system

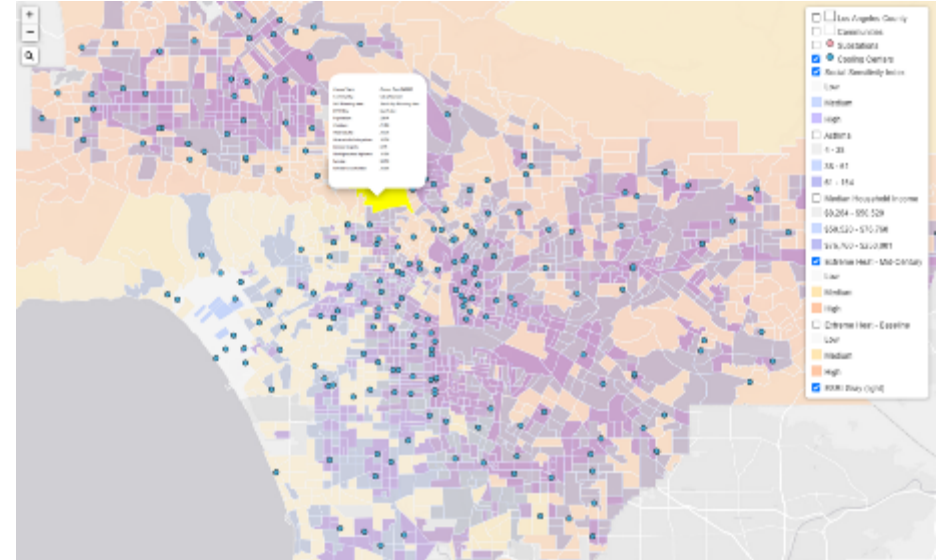


Final Deliverables

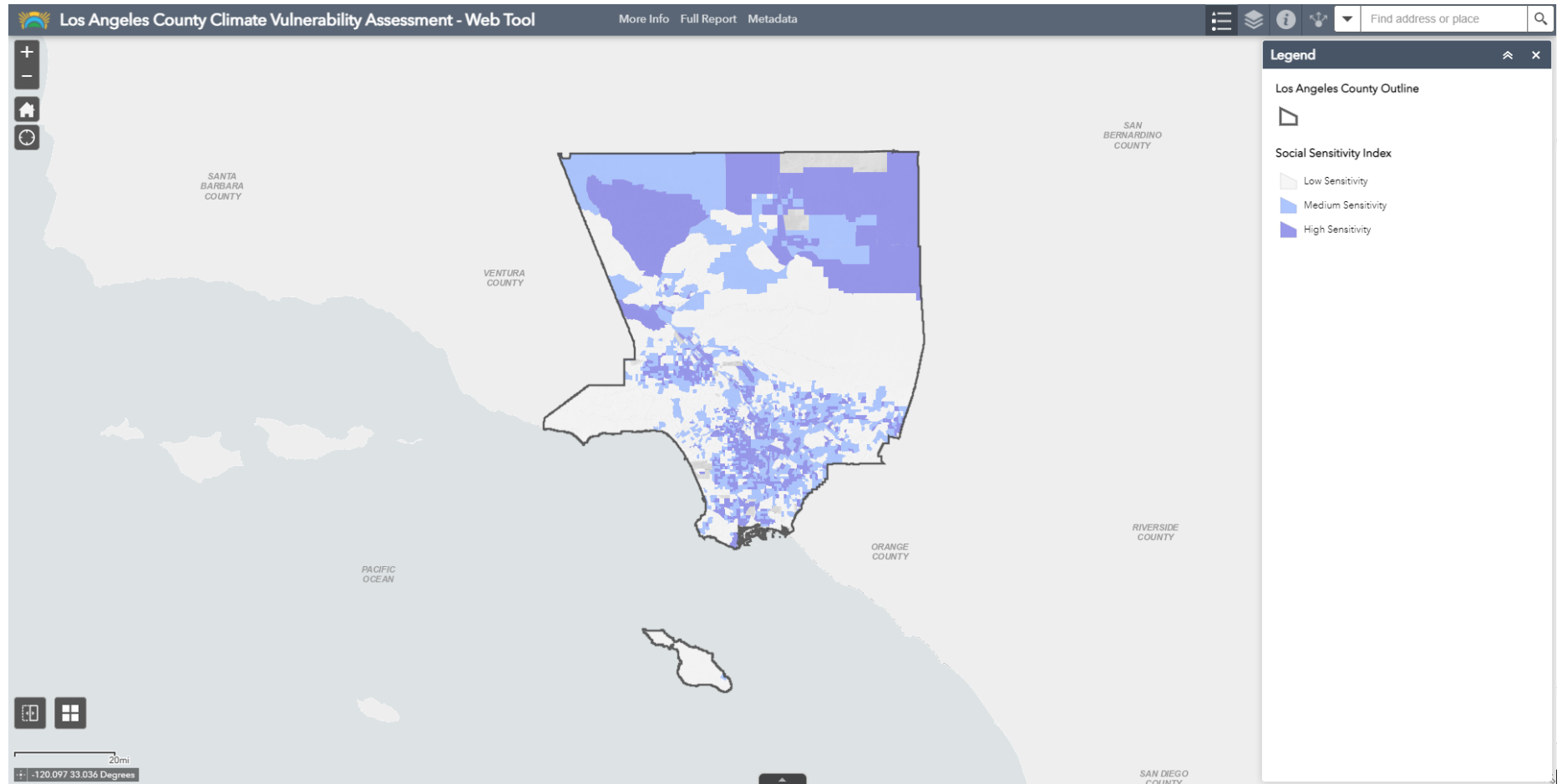
LA County
Climate
Vulnerability
Assessment



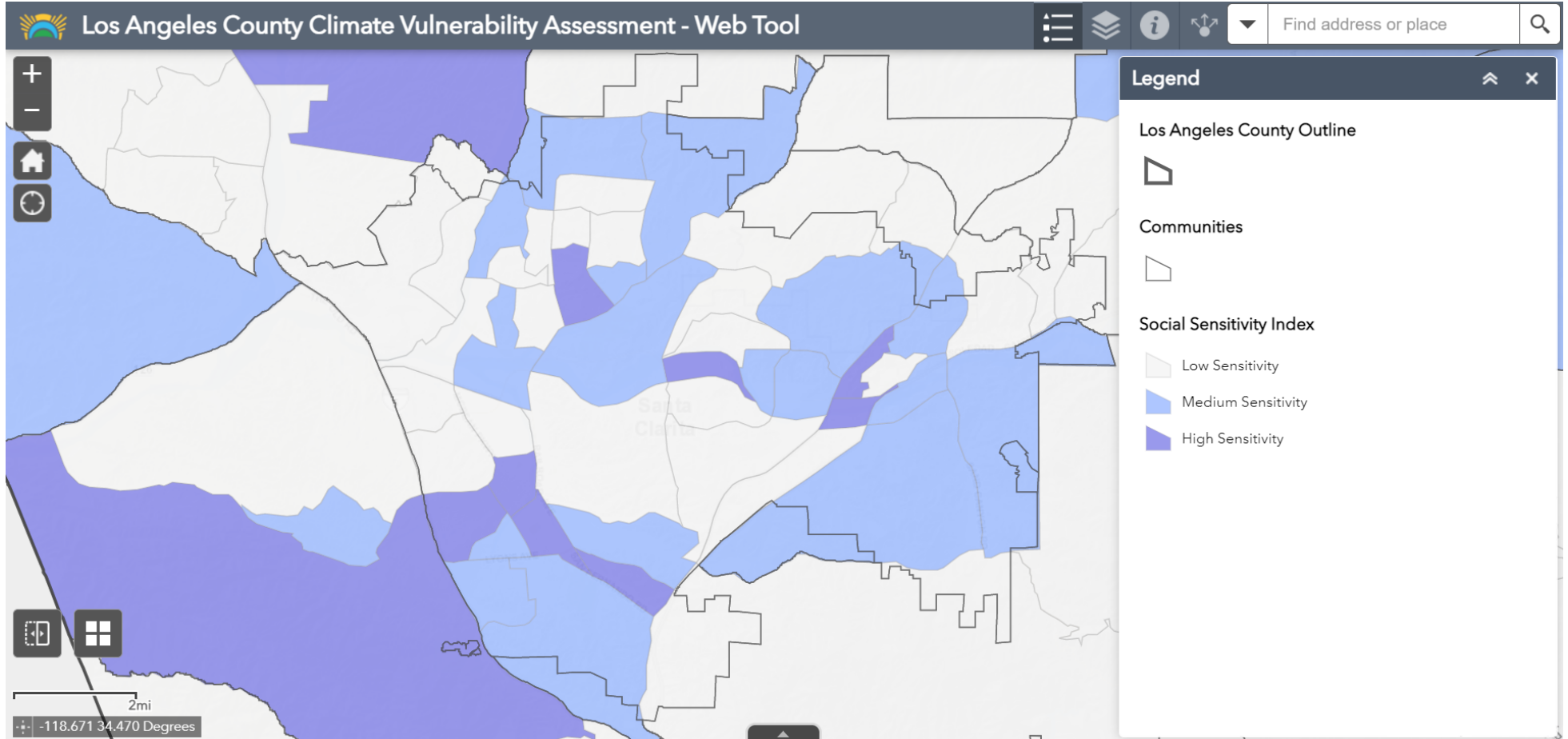
Online
Mapping and
Data Tool



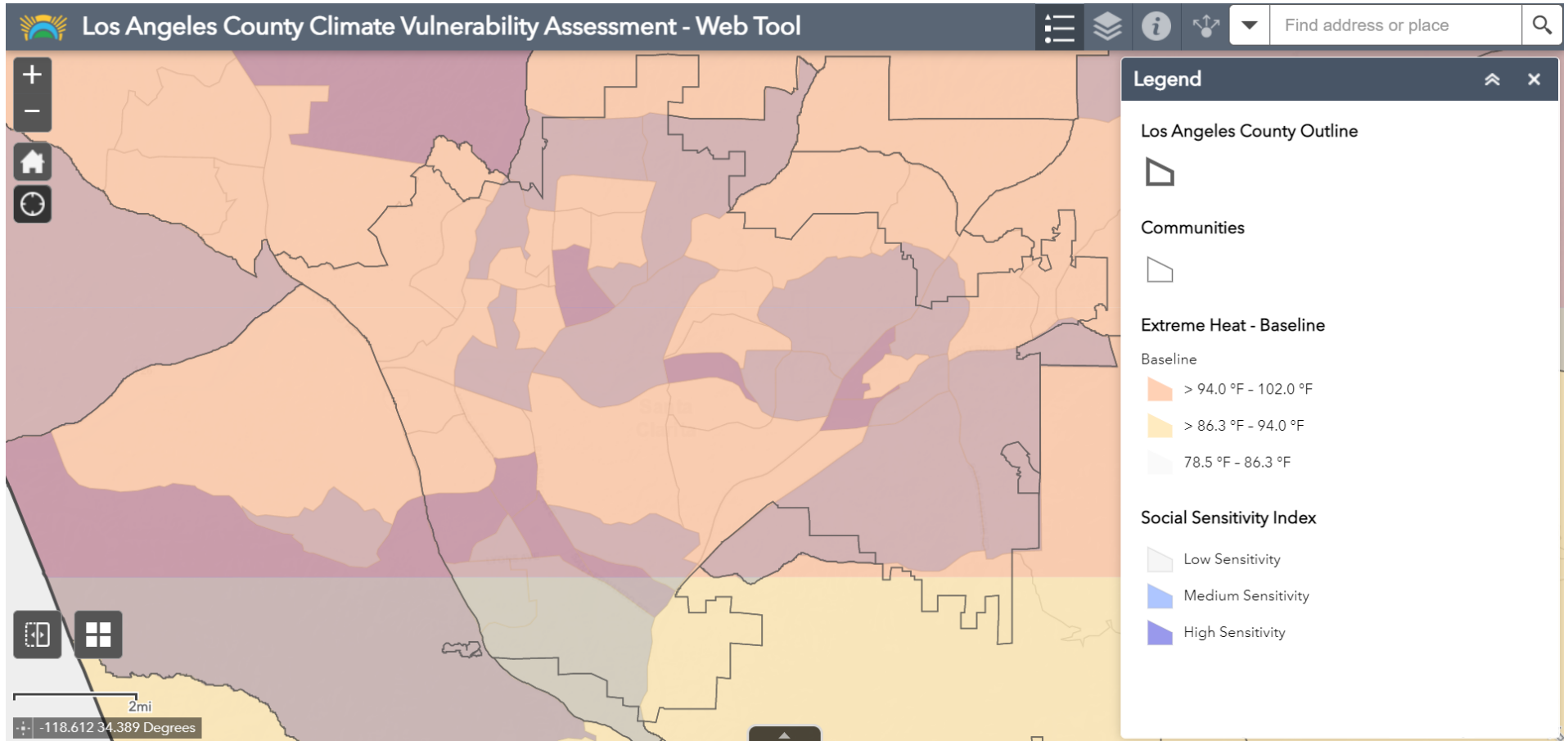
CVA Web Tool - Social Sensitivity Index



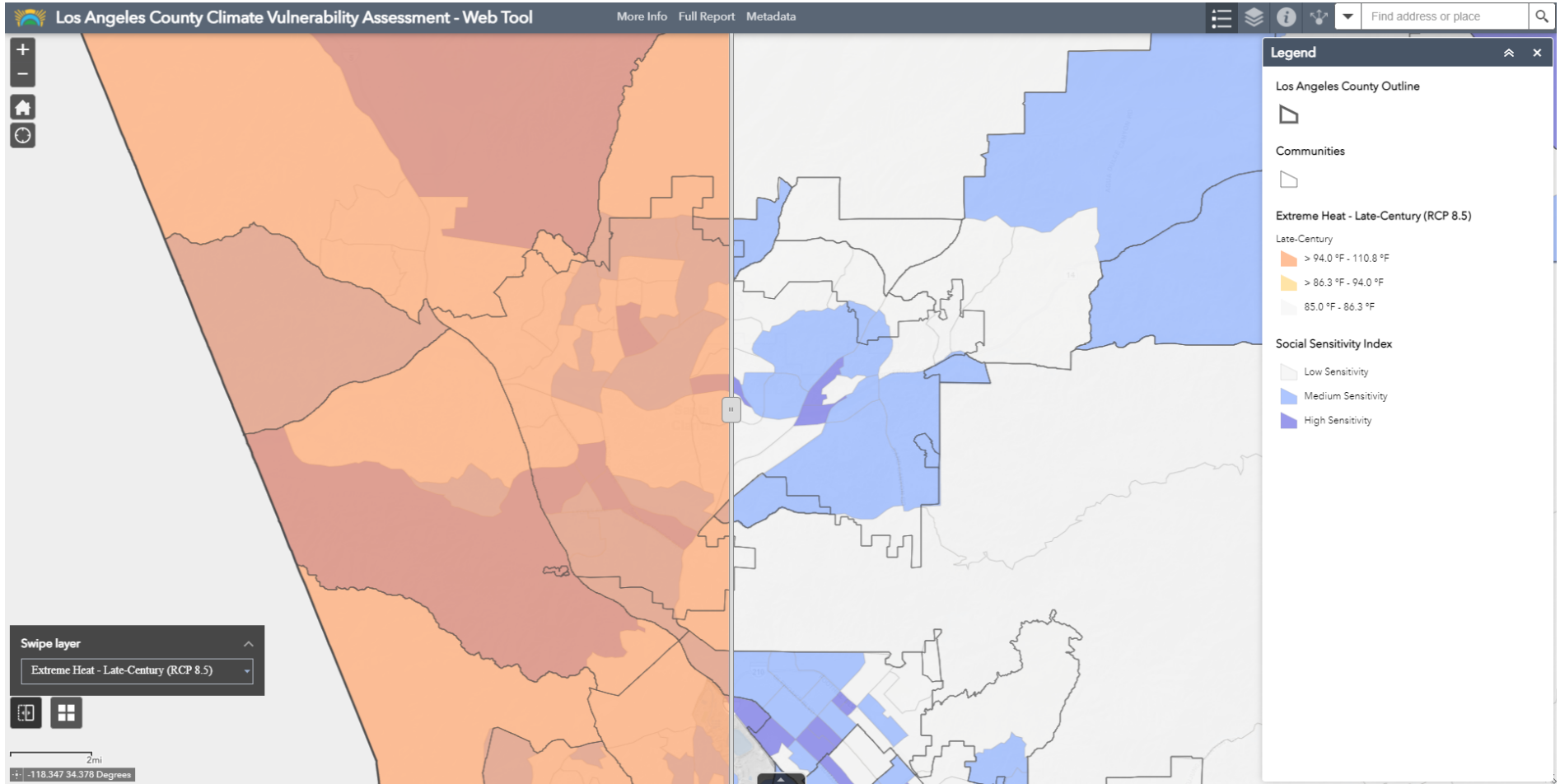
CVA Web Tool - Zoom to Santa Clarita



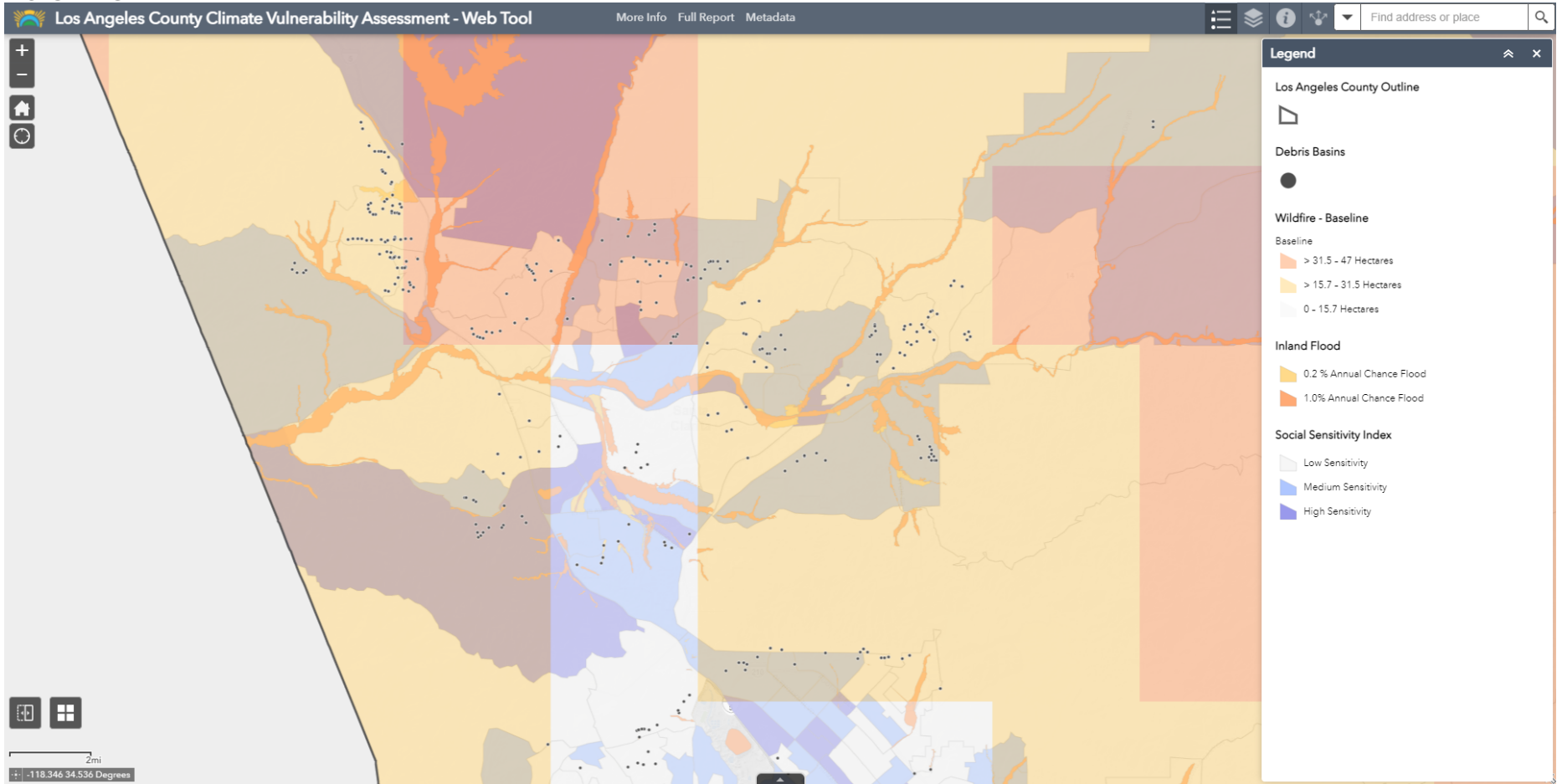
CVA Web Tool - Santa Clarita Heat Vulnerability



CVA Web Tool - Swipe for Extreme Heat (Late-Century)



CVA Web Tool - Wildfire, Flood Risk, and Debris Basins



CVA Web Tool - Wildfire and Transmission Lines



Los Angeles County Climate Vulnerability Assessment - Web Tool

More Info Full Report Metadata

Find address or place

Legend

Los Angeles County Outline

Electric Transmission Lines

Wildfire - Baseline

Baseline

- > 31.5 - 47 Hectares
- > 15.7 - 31.5 Hectares
- 0 - 15.7 Hectares

Social Sensitivity Index

- Low Sensitivity
- Medium Sensitivity
- High Sensitivity

(3 of 3)

Electric Transmission Lines

Name SCE 500kV
 kV 500
 kV (Sort) 500
 Owner SCE
 Status Operational
 Circuit Single
 Type OH

Zoom to

2mi

-118.525 34.383 Degrees

Los Angeles County Outline Debris Basins Wildfire - Baseline Inland Flood Social Sensitivity Index Electric Transmission Lines

Options Filter by map extent Zoom to Clear selection Refresh

Name	kV	kV_Sort	Owner	Status	Circuit	Type
SCE 66kV	66	66	SCE	Operational	Single	OH
SCE 66kV	66	66	SCE	Operational	Single	OH
SCE 66kV	66	66	SCE	Operational	Single	OH
SCE 66kV	66	66	SCE	Operational	Single	OH
LADWP 500kV	500	500	LADWP	Operational	Single	OH
LADWP 230kV	230	230	LADWP	Operational	Double	OH
LADWP 230kV	230	230	LADWP	Operational	Single	OH

74 features 0 selected

How you can use the CVA

Data and information in the CVA can be used to:

- Identify local priorities for infrastructure investment and hazard mitigation
- Inform public health / emergency preparedness policies and programs
- Guide land use planning decisions
- Help fulfill state mandates such as SB 379
- Apply for climate resilience funding

THANK YOU!

For more questions, contact LA County Chief Sustainability Office:

sustainability@lacounty.gov

CALIFORNIA

RESILIENCE PARTNERSHIP



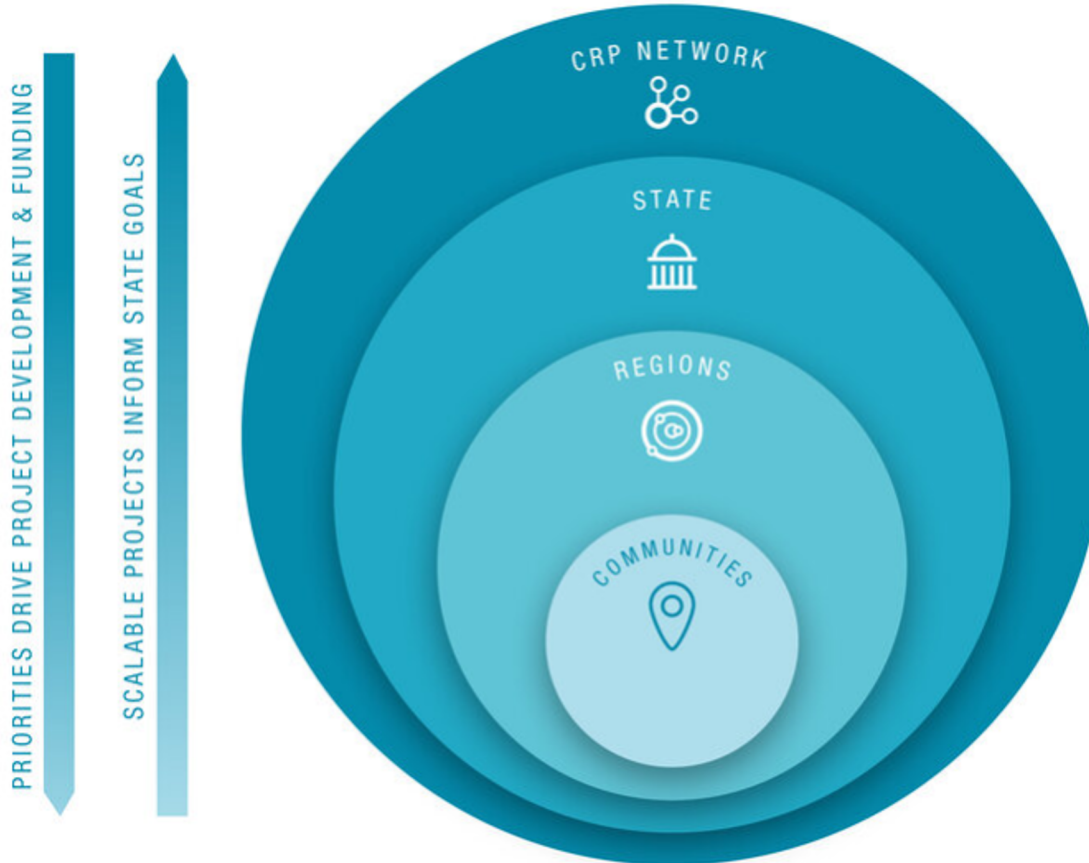
An aerial photograph of a city at dusk or dawn. The sky is a mix of dark blue and orange, with scattered clouds. In the foreground, a dense urban landscape is visible, featuring numerous high-rise buildings. A wide river flows through the city, with a large bridge crossing it. The overall scene is dimly lit, with the city lights beginning to glow against the twilight sky.

Resilient Cities Catalyst is a global non-profit that helps cities and regions build partnerships to solve their most pressing challenges.

Key insights from working with 100 global cities motivated a regional, multi-sector approach.



The California Resilience Partnership (CRP) is a multimillion-dollar public-philanthropic effort that creates a new platform for partnerships to build resilience at the regional scale, in collaboration with the Governor's Office of Planning & Research.



The CRP Network

- Connects resilience practitioners statewide to share best practices

State

- Coordinates through the Governor's Office of Planning and Research with key state agencies to foster alignment

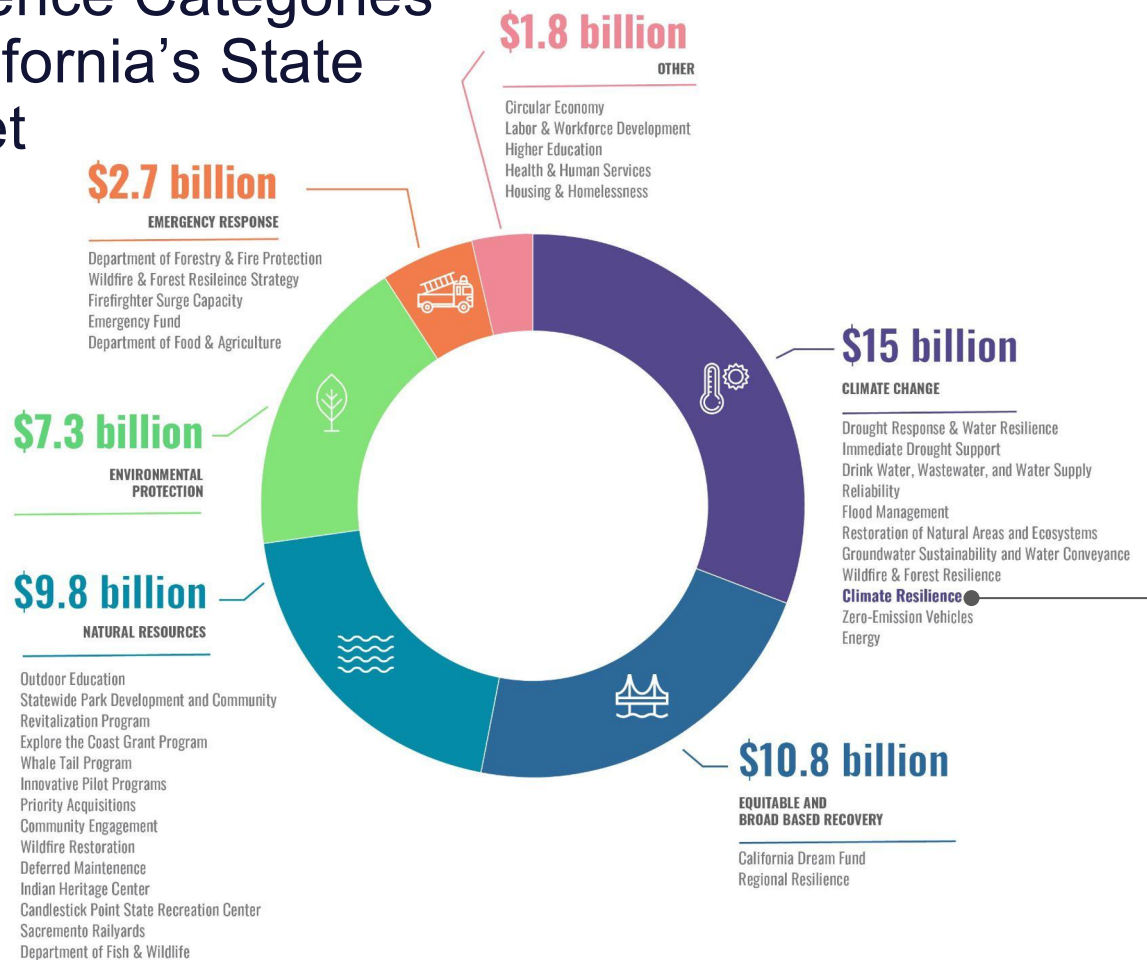
Regions

- Co-creates regional resilience frameworks across jurisdictional partners to drive integrated project development activities

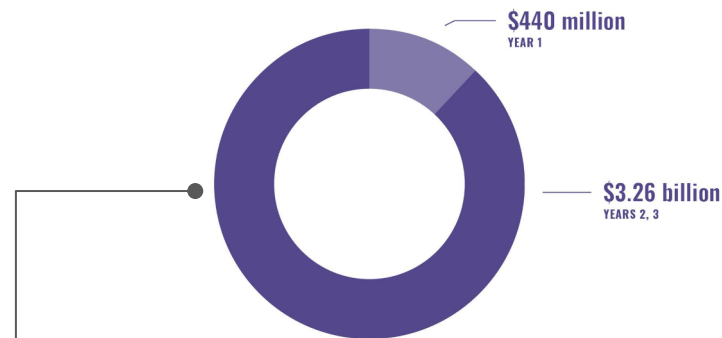
Communities

- Primes projects for funding opportunities, leveraging global best practices and technical assistance

Funded Climate Resilience Categories in California's State Budget



 **Climate Resilience Budget: \$3.7 billion**
FROM THE CALIFORNIA STATE BUDGET




This graphic shows climate-related line items across departments and chapters in the June enacted budget. These values reflect approximate totals derived from the recently passed Senate and Assembly Bills.

By cultivating an ecosystem of partners, CRP fosters additional philanthropic investment.




To learn more, visit:
rcc.city/losangeles




The CRP Program

Building resilience requires working across systems and disciplines. CRP is creating a platform for critical actors across sectors to come together and address the critical resilience needs of different regions across the state. The three components of the CRP program are designed to strengthen the link between policies and funding and project implementation while amplifying scalable projects to inform statewide goals—resulting in local and safe communities that are resilient to future shocks and stresses.

The California Resilience Partnership features:

- 

A SEQUENCE OF REGIONAL PROCESSES

Informed by partnerships with local government, nonprofit, and philanthropic partners, these multi-partner sequences of project development include grants, convenings, research, and technical support focused on gaps to regional resilience priorities. These activities may result in the coordination of regional resilience frameworks and are designed to catalyze additional local funding and to yield a robust pipeline of quality “shovel ready” resilience projects that advance equity and are primed for funding sources. So far, CRP has launched with two regional pilots in [Los Angeles](#) and [Ventura Counties](#) as well as [greater San Diego](#), and will be expanding to future regions over the coming years. [Let us know](#) if you are interested in learning more or partnering on expansion to future regions.
- 

CRP PRACTITIONER NETWORK

Established through partnerships with existing networks and designed to amplify and complement the ecosystems of resilience champions, the Practitioner Network will bring together resilience practitioners across sectors statewide for learning exchanges and other opportunities for knowledge-sharing, both in person and virtually. By providing and using global best practices and fostering collaboration around common resilience challenges, the Network will help to strengthen capacity among California’s resilience practitioners.
- 

COLLABORATION WITH STATE PARTNERS

A statewide CRP Advisory Board including multi-sector resilience leaders helps to strengthen alignment between local projects and State funding & policy. A State Liaison representing the Integrated Climate Adaptation and Resilience Program of the Governor’s Office of Planning and Research facilitates collaboration.

Q&A

Breakout Sessions



I. Equitable Community-Driven Climate Planning

- I. **Kristen Torres Pawling**, Sustainability Program Director, LA County Chief Sustainability Office
- II. **Natalie Hernandez**, Associate Director, Climate Planning & Resilience, Climate Resolve

II. Strategies for Addressing Organics and Food Recovery

- I. **Primitivo Nunez and Julia Dolloff**, CalRecycle
- II. **Aric Rodriguez and Jennifer King**, LA County Public Works
- III. **Alex Fung**, Senior Management Analyst, San Gabriel Valley COG
- IV. **Doug Krauss**, Environmental Programs Manager, City of Hermosa Beach

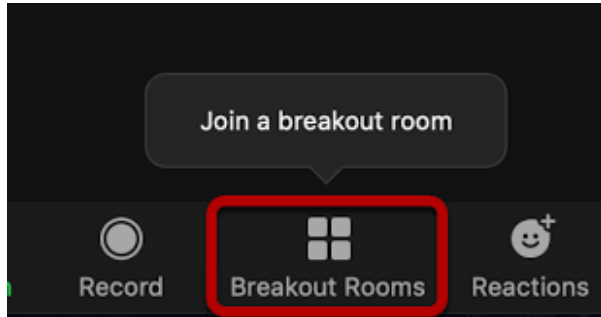
III. Urban Cooling and Trees

- I. **Cindy Montanez**, CEO, TreePeople
- II. **Yujuan Chen**, Senior Manager of Urban Forestry Policy, TreePeople
- III. **Eileen Garcia**, Regional Manager, Southeast LA, TreePeople
- IV. **Graciela Ortiz**, Mayor, City of Huntington Park
- V. **Karina Macias**, Councilmember, City of Huntington Park

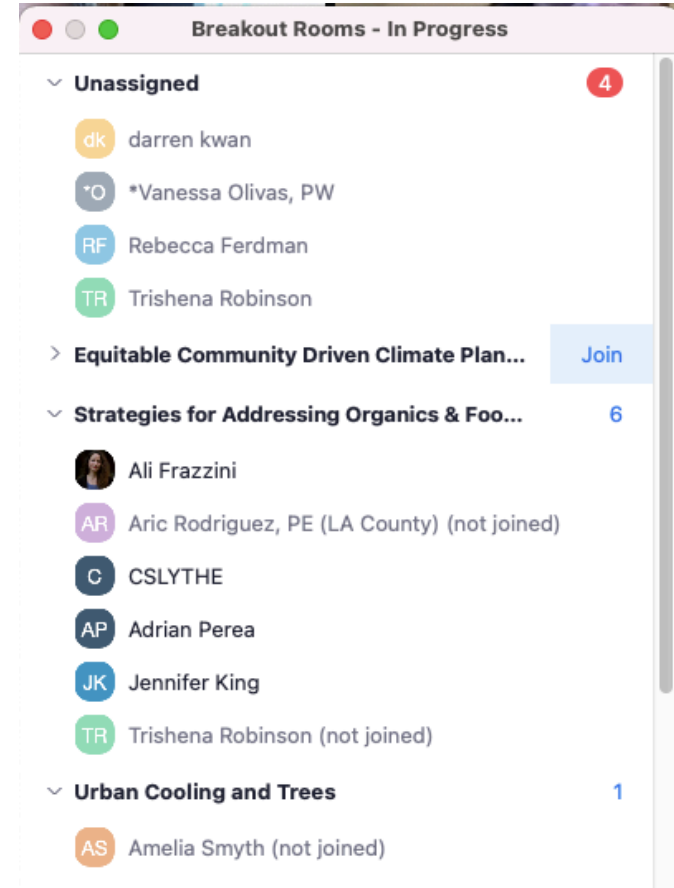
IV. Water Conservation and Efficiency

- I. **Bill McDonnell**, Water Efficiency Manager, Metropolitan Water District
- II. **Tracy Quinn**, Director, California Urban Water Policy, Natural Resources Defense Council
- III. **Minh Le**, GM, Energy & Environmental Services, LA County Internal Services Department

Breakout Sessions - Instructions



- Click on Breakout Rooms icon at base of Zoom screen
- You can choose from the 4 Breakout Rooms
- Hover your mouse over the Breakout Name on the right-hand side
- Click **Join**
- If you prefer, ask us in the Chat to assign you
- Careful not to choose “Leave Meeting”
- See you back here in 40 minutes!












Closing Thoughts

Resource Library for Cities

<https://ceo.lacounty.gov/resource-library/>



 <p>Equity & Community Driven Engagement</p> <p>💡 Links to Resources ▼</p>	 <p>Energy Efficiency & Renewable Energy</p> <p>🔌 Links to Resources ▼</p>	 <p>Water Supply, Conservation & Efficiency</p> <p>💧 Links to Resources ▼</p>
 <p>EV Rebates & Infrastructure</p> <p>🚗 Links to Resources ▼</p>	 <p>Climate Action & Resilience</p> <p>🏠 Links to Resources ▼</p>	 <p>Waste & Recycling</p> <p>♻️ Links to Resources ▼</p>
 <p>Biodiversity & Urban Forestry</p> <p>+</p> <p>Links to Resources ▼</p>	 <p>Transportation & Mobility</p> <p>🚗 Links to Resources ▼</p>	 <p>Sustainability in General</p> <p>🌿 Links to Resources ↗</p>

Resource Library for Cities

<https://ceo.lacounty.gov/resource-library/>



Equity & Community Driven Engagement

Links to Resources

- California Healthy Places Index
- CalEnviroScreen Screening Tool
- Guide to Equitable Community Driven Climate Planning
- Making Equity Real in Climate Adaptation and Community Resilience Policies and Programs
- Racial Equity Tools
- SCAG Climate Adaptation Outreach Toolkit
- TIERS Public Engagement Framework
- SB 1000 Toolkit: Planning for Healthy Communities



Energy Efficiency & Renewable Energy

Links to Resources

- CEC Energy Conservation Loan Programs
- Federal Funding for Energy Efficiency and Renewable Energy
- GRID Alternatives Community Solar Program
- Clean Power Alliance: Local Renewable Energy Supply
- State Loans for Energy and Environmental Needs
- Building Decarbonization Toolkit
- Building Efficiency and Renewables Reach Codes
- Existing Building Energy and Water Efficiency (EBEWE) Ordinance
- Electrification Reliability FAQ
- Energy Efficiency Resources for Residents, Businesses and Agencies



Water Supply, Conservation & Efficiency

Links to Resources

- LA County Safe Clean Water Program
- MWD Water Supply Grant Programs
- CA Model Water Efficient Landscape Ordinance
- Santa Monica Water Efficient Landscape Ordinance
- West Hollywood Water Efficient Landscape Ordinance
- Los Angeles Water Efficiency Ordinance
- U.S. Water Alliance One Water Hub
- Sustainable Streets Master Plan
- Green Infrastructure Leadership Exchange
- Atlanta Green Infrastructure Strategic Action Plan
- MWD Water Rebates – Residential & Commercial



EV Rebates & Infrastructure



Climate Action & Resilience



Waste & Recycling

THANK YOU!

For more questions, contact LA County Chief Sustainability Office:

sustainability@lacounty.gov

Recording and Sign-up for Updates

ceo.lacounty.gov/ourcounty-cso-actions/