

# WDR Working Group Meeting #3

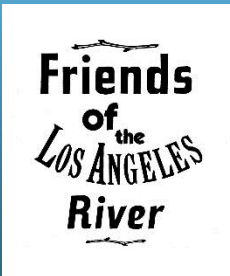
**Friends of the Los Angeles River**

Lewis MacAdams

William Preston Bowling

Stephen Mejia

Shawn Warren



# About FoLAR

We are a non-profit organization founded in 1986 to Protect and Restore the Natural and Historic heritage of the Los Angeles River and its Riparian Habitat through Inclusive Planning, Education and Wise Stewardship.





**Friends  
of  
the  
LOS ANGELES  
River**

**MacAdams making a stand**



**Friends  
of the  
LOS ANGELES  
River**

**Same Bulldozed area years later**



**Friends  
Of  
the  
LOS ANGELES  
River**

**Wildlife is thriving in these areas**



Egret



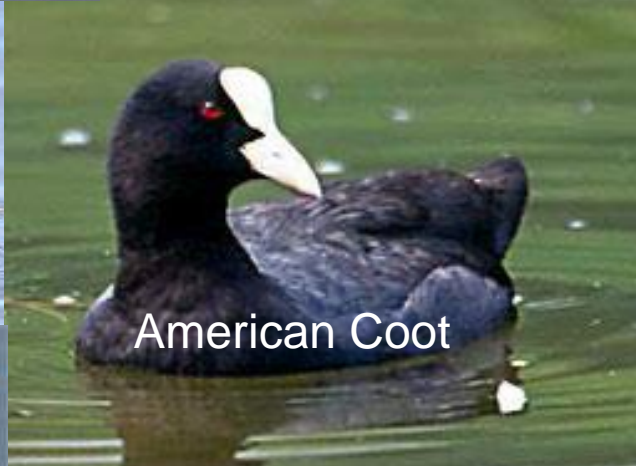
Black Necked Stilt



Cormorant



Cinnamon Teal



American Coot



Muscovy Duck



Great Blue Heron



Bufflehead (f)



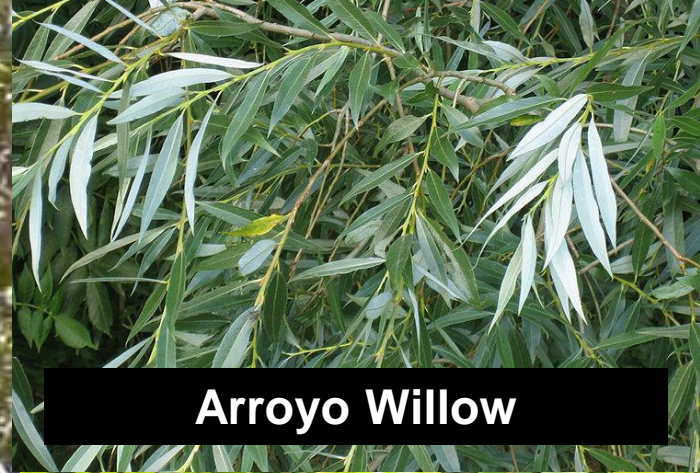
Merganser (m)



**Freemont Cottonwood**



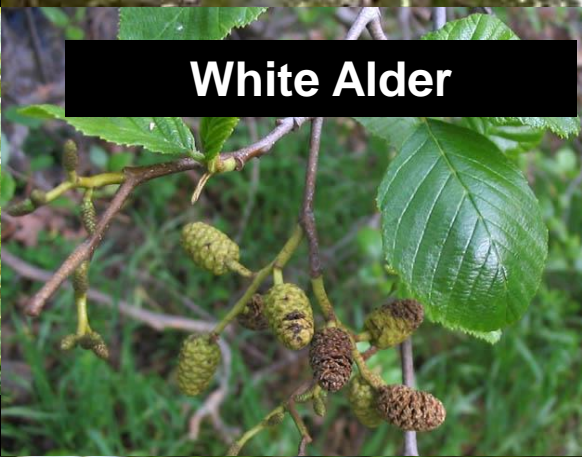
**California Sycamore**



**Arroyo Willow**



**Black Walnut**



**White Alder**



**Coastal Live Oak**



**Cattails**

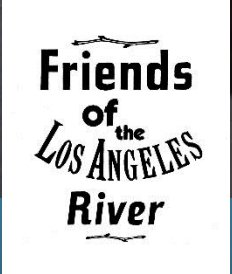


**Elderberry**



**Mulefat**

# Education Programs



Over 2000 Students in 2015



# 26 Years of Taking Out The Trash



L.A. River - Willow Street - Long Beach

Oasis on the River/Gathering Spot/Community Center / The Frog Spot is open All Day Saturday & Sunday with Live Music every Saturday evening. DURING SUMMER MONTHS.



L.A. River - Elysian Valley



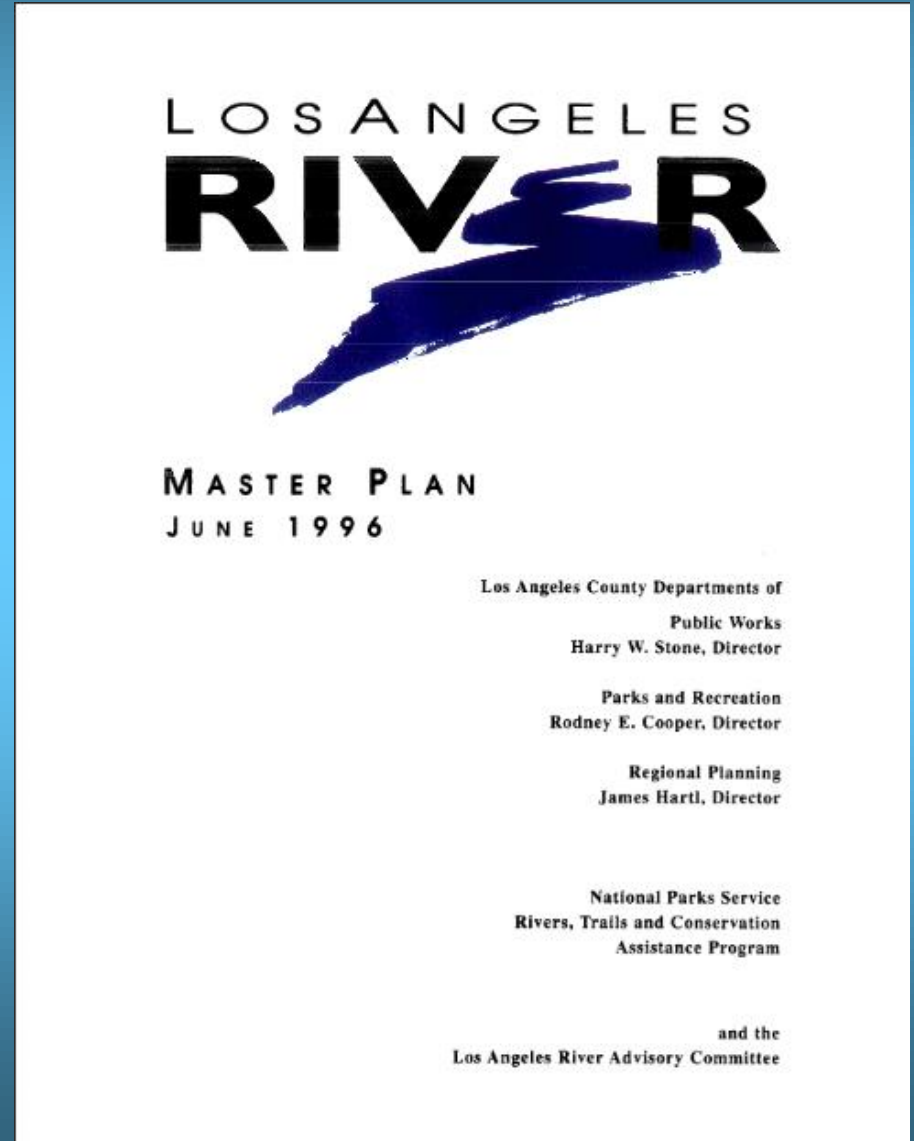
# The Los Angeles River Rover



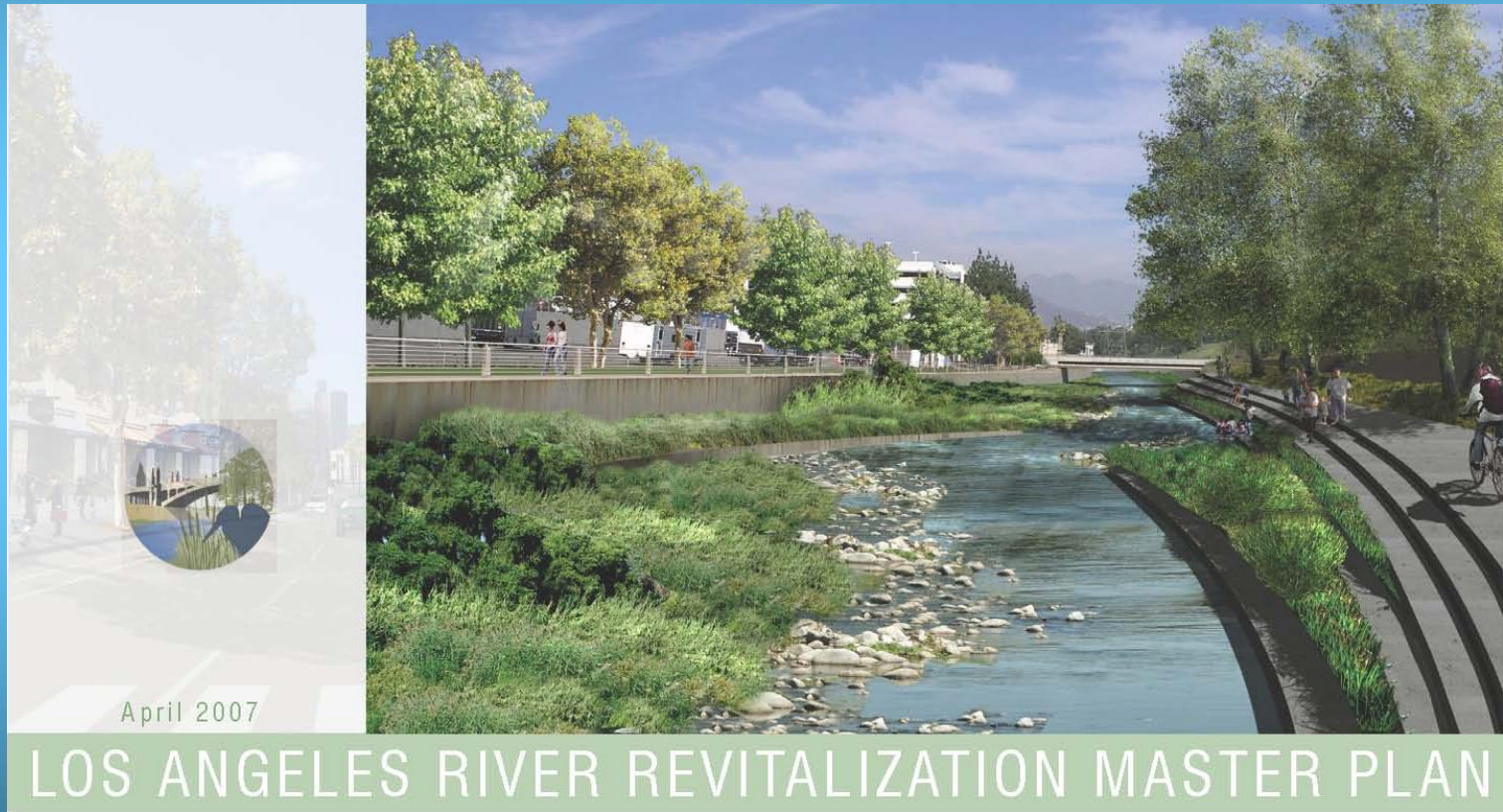
# LA County River Master Plan

“Overall, the master plan advocates environmental enhancement, recreational opportunities, and economic development throughout the LA River and Tujunga wash corridors.”

-LA County's LA River Master Plan factsheet



# L.A. River Revitalization Master Plan



April 2007

LOS ANGELES RIVER REVITALIZATION MASTER PLAN

# L.A. River Revitalization Master Plan

“In addition to restoring ecological function, revitalizing the River includes storing peak flows to reduce flow velocities in the channel in order to facilitate ecological restoration and access.

The changes can enable the development of multi-benefit green spaces within the River channel that simultaneously provide open space and water quality benefits, and further provide examples of revitalization features that can be applied throughout the watershed.”

- Increase Employment, Housing, and Retail Space Opportunities
- Create Environmentally-Sensitive Urban Design and Land Use Opportunities and Guidelines
- Focus Attention on Underused Areas and Disadvantaged Communities

In addition to restoring ecological function, revitalizing the River includes storing peak flows to reduce flow velocities in the channel in order to facilitate ecological restoration and access. The changes can enable the development of multi-benefit green spaces within the River channel that simultaneously provide open space and water quality benefits, and further provide examples of revitalization features that can be applied throughout the watershed.

## CREATE VALUE

This Plan's vision is also about creating value—improving the quality of life for residents, increasing the attractiveness of the City as a place to live and work, and increasing economic prosperity. Core elements of this idea include empowering communities by encouraging participation and consensus-building, creating opportunities for sustainable, economic reinvestment, and adding value and providing an equitable distribution of opportunities to underserved neighborhoods along the River.

# Senate Bill No. 1201

## CHAPTER 212

An act to amend Section 2 of the Los Angeles County Flood Control Act (Chapter 755 of the Statutes of 1915), relating to the Los Angeles River.

[Approved by Governor August 28, 2012. Filed with  
Secretary of State August 28, 2012.]

### LEGISLATIVE COUNSEL'S DIGEST

**SB 1201, De León. Los Angeles River.**

Existing law, the Los Angeles County Flood Control Act, establishes the Los Angeles County Flood Control District and authorizes the district to control and conserve the flood, storm, and other wastewater of the district.

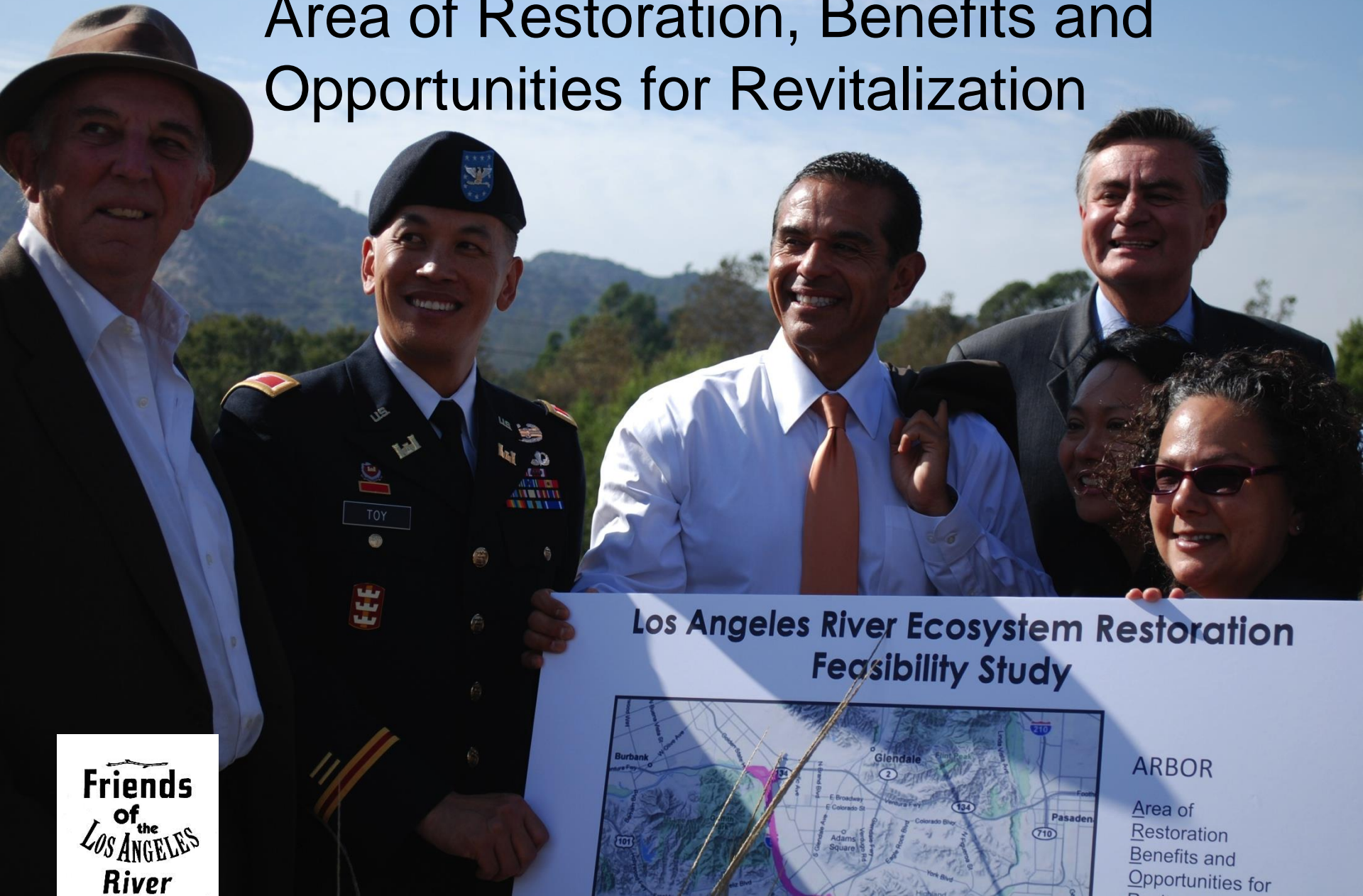
The bill would amend the act to include in the objects and purposes of the district to provide for public use of navigable waterways under the district's control that are suitable for recreational and educational purposes, when these purposes are not inconsistent with the use thereof by the district for flood control and water conservation.

# EPA Designation July 2010





# Area of Restoration, Benefits and Opportunities for Revitalization



**FoLAR donated over \$900,000 to Study**

# Los Angeles River

RECREATIONAL ZONE PILOT PROGRAM  
FROM MEMORIAL DAY THROUGH LABOR DAY

THE FOLLOWING RULES APPLY  
WITHIN THE RIVER CHANNEL



Walk, hike,  
birdwatch,  
photograph.



Exit immediately  
under hazardous  
conditions.



Launch steerable,  
non-motorized  
boats from  
designated areas.



Protect and  
respect the  
wildlife.



Fishing permitted.  
Fish and Wildlife  
regulations enforced.



No fires, barbecues, fire pits, smoking, weapons, alcohol, bicycles, littering  
No dogs or pets, glass containers, soliciting, nudity, swimming, motorized vehicles

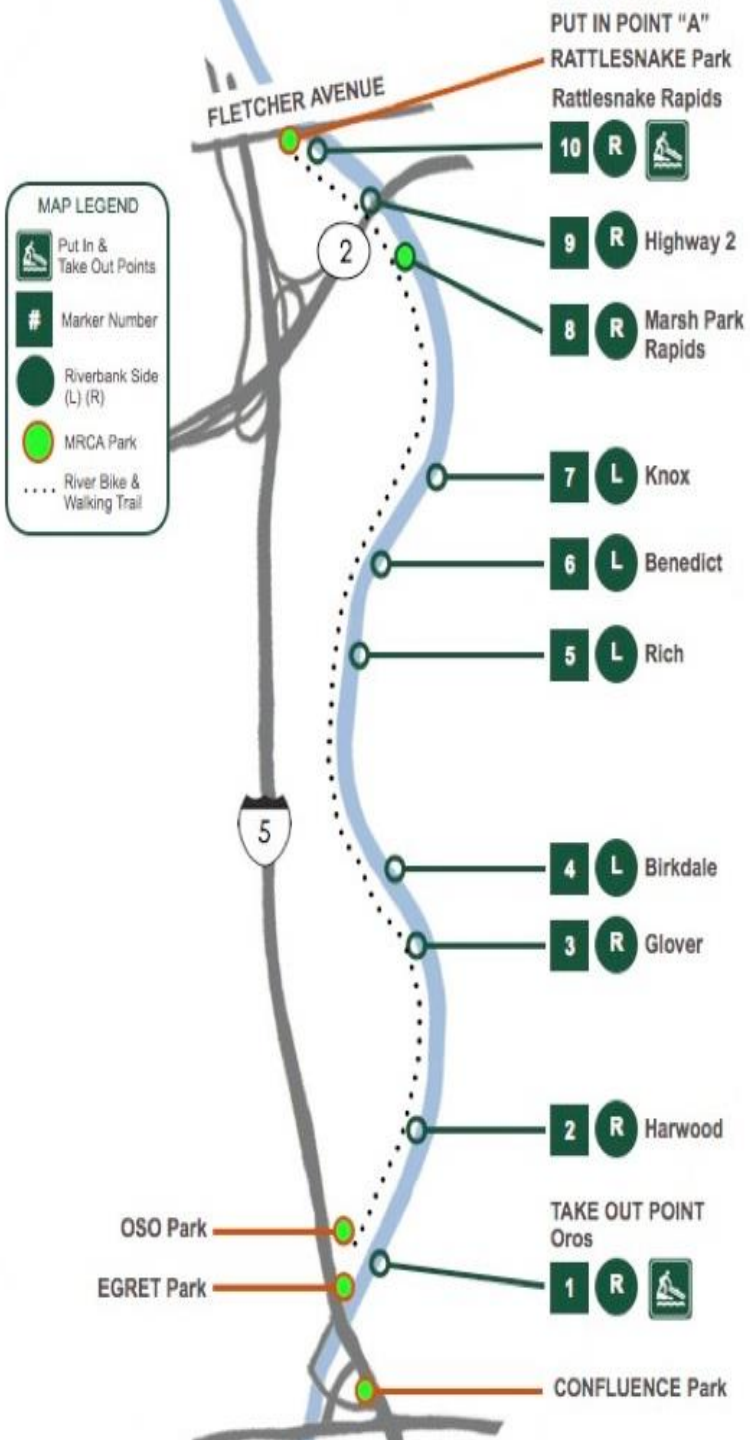
**HOURS: SUNRISE - SUNSET**

Managed by Mountains Recreation and Conservation Authority  
Violation is a misdemeanor punishable by fine and/or imprisonment.  
MRCA Ordinance 2.1 - Posted Condition of Use.

For information or emergencies: (310) 456-7049

MRCA 2015  
Recreation Zone  
Extends into the  
Sepulveda Basin





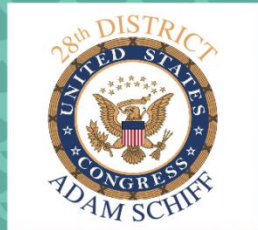
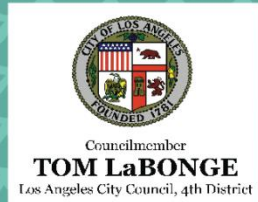
Friends of the Los Angeles River



Save the Date!

September 6<sup>th</sup>, 2014

8:30 a.m. Press Conference



FOLAR.ORG

# Long Beach Estuary “Reach 25”



**Friends  
of  
the  
LOS ANGELES  
River**



**Friends  
of  
the  
LOS ANGELES  
River**



**Friends  
of  
the  
LOS ANGELES  
River**



**Friends  
of  
the  
LOS ANGELES  
River**





**Friends**  
**of**  
**the**  
**LOS ANGELES**  
**River**

**Reach 25 of the Los Angeles River - Willow Street Estuary in Long Beach**

**May 2014**

**October 2014**



**Willow tree remains  
amid bulldozing**

**Friends  
of  
the  
LOS ANGELES  
River**

# Hydraulic Analysis Technical Assesmet Report (HATAR)

## “25.7 Results

•A hydraulic model was developed for the Los Angeles River reach under existing vegetation levels. Channel and water surface profiles for the Los Angeles River hydraulic model are presented in Appendix C. The model showed sufficient capacity along the reach. Therefore, **an additional analysis was conducted** assuming vegetation levels as recommended by BonTerra. The additional analysis conducted is discussed in more detail in the following section.”

## “25.8 Additional Analysis

•BonTerra Consulting provided a recommendation on potential vegetation growth for this reach, which is summarized as follows:

### **Biological Recommendation**

•In the last 500 feet of the reach (downstream end of reach) and on the left bank looking downstream, allow four willow trees to grow and mature at edge of water. Note that these willow trees will be maintained under existing maintenance plan that allows for trimming of lower branches.

•It was determined that the recommendation proposes similar vegetation to what was observed during the site visit of the channel. Therefore, **the Manning’s roughness coefficient was not modified for the reach**. Hence, the recommendation will not affect channel capacity”

# HATAR

**Condition 48** of the WDR required that the hydraulic analysis discuss expected changes in stream flow in response to requirements of the Los Angeles County **Municipal Separate Storm Sewer (MS4) NPDES Permit, Standard Urban Stormwater Mitigation Plans (SUSMPs), Total Maximum Daily Loads (TMDLs)** and other pertinent local plans including, but not limited to the **Integrated Regional Water Management Plan (IRWMP)** (including implementation of, and plans for, increased stormwater infiltration), the City of Los Angeles' **Integrated Resources Plan**, the relevant **watershed master plan** and the **LACFCD's Drought Management Plan**.

To assess the impact of the infiltration requirements set forth in Condition 48, an example watershed was modeled assuming that the entire surface of the watershed was designed to capture flows generated during **the 85th percentile storm**, which is the standard LID requirement (and which is contained in the current Los Angeles County MS4 permit)

When these assumptions were applied in the example watershed, the results showed that the volume of only the first 4.5 hours of a Flood Control Storm hydrograph would be captured in the LID/infiltration infrastructure.

Thus, **the presence of LID/infiltration infrastructure would not affect expected stream flow during major storms**



CONNECTION TO DORNEY CHILD CARE CENTER

STAFF PARKING

BASEBALL FIELD

AVENUE 17

ALHAMBRA STREET

BASKETBALL COURT

CHILDREN'S PLAYGROUND

SOCCER FIELD

FITNESS AREA

SOCCER FIELD

DOG PARK

FILTRATION BASIN

FITNESS AREA

LOS ANGELES RIVER

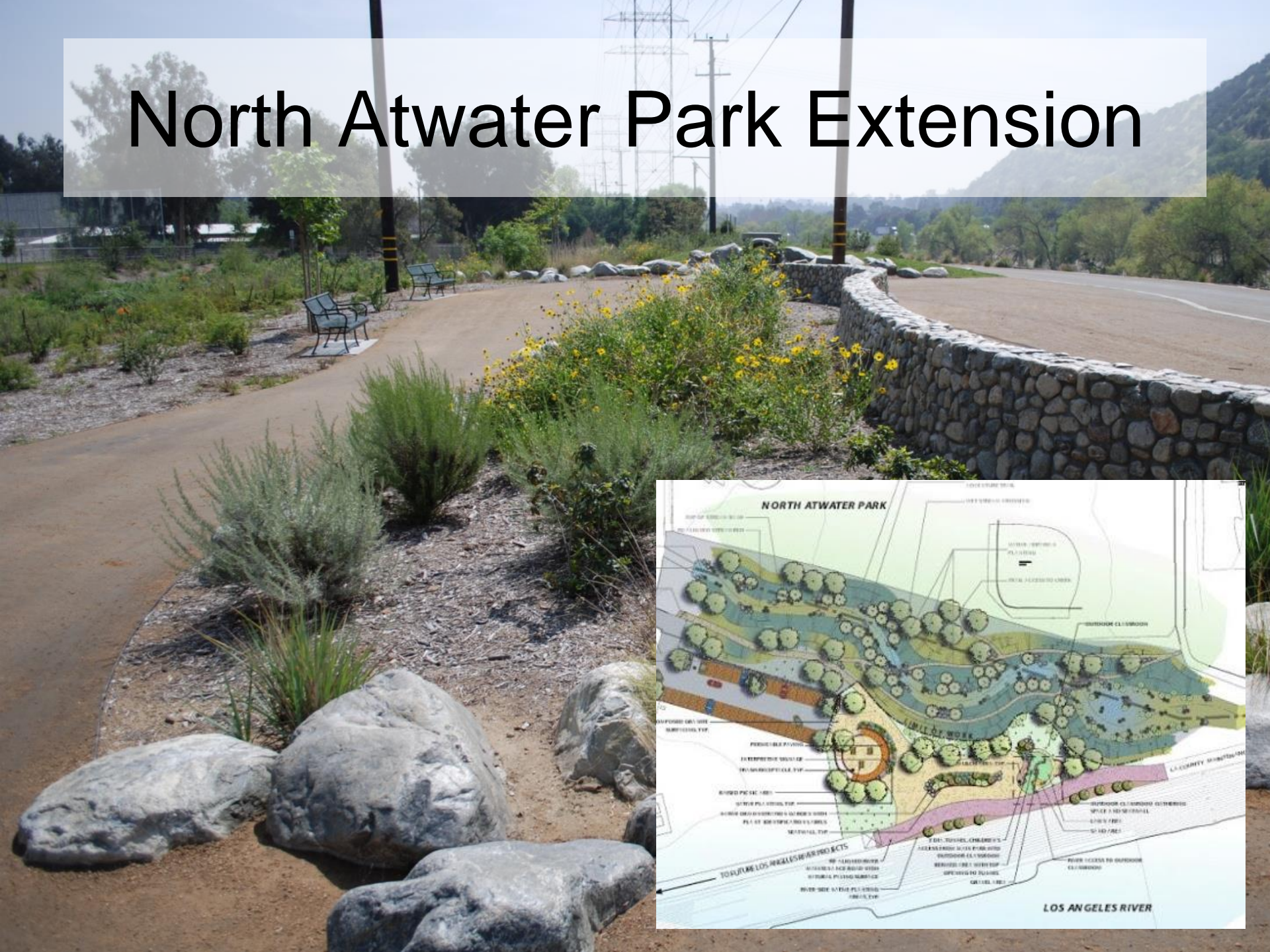


Albion Riverside Park Project  
[www.albionriversidepark.com](http://www.albionriversidepark.com)



Over 300 Acres of surface water

# North Atwater Park Extension



# Lack of Sister Agency involvement

- Cal Fish and Wildlife
- Cal Coastal Conservancy
- Mountains, Recreation and Conservation Conservancy
- Rivers and Mountains Conservancy



Compton Creek

# Compton Creek Restoration Project





**Friends  
of  
the  
LOS ANGELES  
River**




**Friends**  
**of**  
**the**  
**LOS ANGELES**  
**River**

# Talking Points

- Flood Control was overdesigned
- It is now a healthy river ecology – let it perform it's natural function
- RWQCB legal requirements?
- RWQCB Board should be part of process
- Bell's Vireo is present
- Arrundo Donax Removal Programs
- Many new river projects have reduced surface water discharge into LAR

# In Conclusion

- Nothing has changed –permit language
- How is WDR meeting CWA objectives?
- Data says overflow every 5 years yet, have not seen in 30
- “Growth did not pose risk” L.A. County Flood
- National Monies are kept from LAR



Vegetation maintenance is still being handled using mechanical clearing (Bulldozing).

A practice that does not foster habitat protection or potential recreational benefits.

**Friends  
of the  
LOS ANGELES  
River**