



WATER RESOURCES



TRANSPORTATION



ENVIRONMENTAL SERVICES



*Public Works*  
LOS ANGELES COUNTY



PUBLIC BUILDINGS



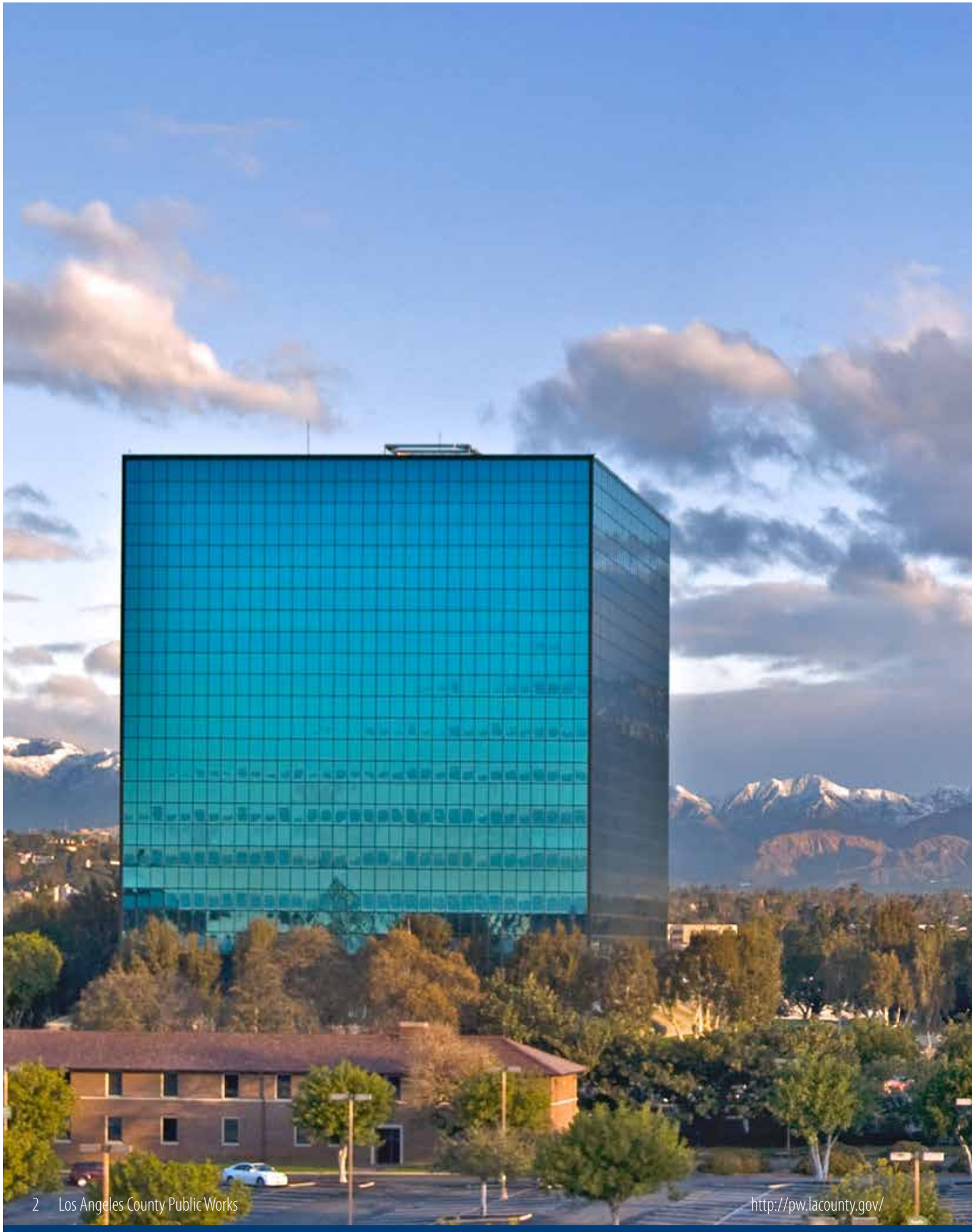
DEVELOPMENT SERVICES



EMERGENCY MANAGEMENT

# Quarterly Business Update

October 1 – December 31, 2019



## CONTENTS

<b>Public Works Overview</b>	<b>4</b>
<b>Water Resources</b>	<b>6</b>
MAJOR PROGRAMS/SERVICES	7
KEY ISSUES/CHALLENGES	11
KEY PRIORITIES	12
KEY PRIORITY STATUS	13
<b>Transportation</b>	<b>16</b>
MAJOR PROGRAMS/SERVICES	17
KEY ISSUES/CHALLENGES	19
KEY PRIORITIES	20
KEY PRIORITY STATUS	21
<b>Environmental Services</b>	<b>24</b>
MAJOR PROGRAMS/SERVICES	25
KEY ISSUES/CHALLENGES	27
KEY PRIORITIES	28
KEY PRIORITY STATUS	30
<b>Public Buildings</b>	<b>34</b>
MAJOR PROGRAMS/SERVICES	35
KEY ISSUES/CHALLENGES	36
KEY PRIORITIES	37
KEY PRIORITY STATUS	38
<b>Development Services</b>	<b>40</b>
MAJOR PROGRAMS/SERVICES	41
KEY ISSUES/CHALLENGES	42
KEY PRIORITIES	43
KEY PRIORITY STATUS	44
<b>Emergency Management</b>	<b>46</b>
MAJOR PROGRAMS/SERVICES	47
KEY ISSUES/CHALLENGES	49
KEY PRIORITIES	49
KEY PRIORITY STATUS	50
<b>Appendix 1 Organization Chart</b>	
<b>Appendix 2 Business Outreach</b>	
<b>Appendix 3 Administrative Services</b>	
<b>Appendix 4 Services Provided to Cities</b>	
<b>Appendix 5 Public Works' Priority Legislation</b>	
<b>Appendix 6 Public Works Field Facilities</b>	

# Public Works Overview

*“We deliver regional infrastructure and services improving the quality of life for more than 10 million people in Los Angeles County.”*

Los Angeles County Public Works was formed in January 1985, consolidating the former County Road Department, the County Engineer Department, and the County Flood Control District.

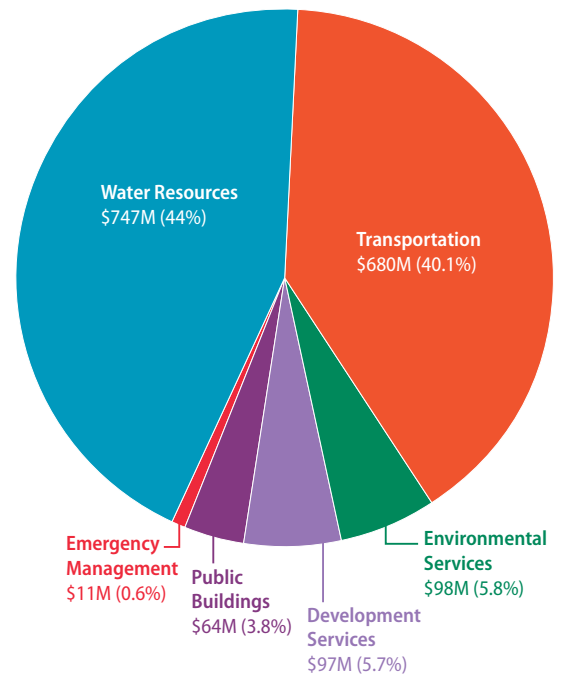
With a Vision to become the most trusted public agency in the region, Public Works has been defined by its responsiveness to the public, commitment to provide excellent customer service, and drive to build great community relations. Public Works’ workforce takes pride in being public servants providing essential and critical services for all residents and businesses in Los Angeles County.

Public Works’ diverse operations are defined within six core service areas: Water Resources, Transportation, Environmental Services, Public Buildings, Development Services, and Emergency Management. Its annual budget over \$3 billion is funded by restricted revenues, such as gas excise and sales tax, benefit assessment, water and sewer sales, user fees, and contract cities revenues.

Public Works is strategically focused on supporting economic development through business-friendly contracting opportunities that will better serve the County’s small businesses and local worker hiring objectives. In Fiscal Year 2018-19, Public Works awarded over \$770 million worth of contracts within Los Angeles County, which helped create 9,536 jobs. (See Appendix 2 for more details on Business Outreach).

Public Works’ workforce is comprised of nearly 4,000 employees in more than 500 job classifications, including professional, technical, clerical, and skilled crafts.

Headquartered at 900 South Fremont Avenue in Alhambra, Public Works has 77 field facilities throughout Los Angeles County.



**FY 2019-20 Core Service Areas Final Adopted Budget**

CORE SERVICE AREAS	AMOUNT	PERCENTAGE
Water Resources	\$1,256,348,000	52.5%
Transportation	\$744,998,000	31.1%
Environmental Services	\$204,589,000	8.5%
Public Buildings *	\$73,309,000	3.1%
Development Services	\$100,442,000	4.2%
Emergency Management	\$14,847,000	0.6%
<b>Total Core Service Areas Budget</b>	<b>\$2,394,533,000</b>	<b>100%</b>
Others**	\$693,516,000	
<b>Total Final Adopted Budget</b>	<b>\$3,088,049,000</b>	

\* Final Adopted Budget for Public Buildings Core Service Area includes project management costs only. It does not include construction costs.

\*\* Includes cross-business functions.

# Organization Chart



**Mark Pestrella**  
**Director**  
 (626) 458-4001  
 mpestrella@pw.lacounty.gov



**Angela R. George-Moody**  
**Chief Deputy Director**  
 (626) 458-4003  
 agmoody@pw.lacounty.gov



**Vacant**  
**Assistant Director**



**Massood Eftekhari**  
**Deputy Director**  
 Public Buildings



**Isaac Gindi**  
**Deputy Director**  
 Business Outreach/  
 Technical Services



**Rossana D'Antonio**  
**Deputy Director**  
 Development Services &  
 Emergency Management



**Shari Afshari**  
**Deputy Director**  
 Environmental Services



**Phil Doudar**  
**Deputy Director**  
 Transportation



**Dan Lafferty**  
**Deputy Director**  
 Water Resources



**Alma D. Martinez**  
**Admin**  
**Deputy Director**  
 Administrative Services

NAME	TITLE	PHONE	EMAIL
Mark Pestrella	Director	626.458.4001	mpestrella@pw.lacounty.gov
Angela R. George-Moody	Chief Deputy Director	626.458.4003	agmoody@pw.lacounty.gov
Vacant	Assistant Director		
Massood Eftekhari	Deputy Director, Public Buildings	626.458.4016	meftek@pw.lacounty.gov
Isaac Gindi	Deputy Director, Business Outreach/ Technical Services	626.458.4010	igindi@pw.lacounty.gov
Rossana D'Antonio	Deputy Director, Development Services & Emergency Management	626.458.4004	rdanton@pw.lacounty.gov
Shari Afshari	Deputy Director, Environmental Services	626.458.4008	safshari@pw.lacounty.gov
Phil Doudar	Deputy Director, Transportation	626.458.4018	pdoudar@pw.lacounty.gov
Dan Lafferty	Deputy Director, Water Resources	626.458.4012	dlaff@pw.lacounty.gov
Alma D. Martinez	Admin Deputy Director, Administrative Services	626.458.4006	almartinez@pw.lacounty.gov



# Water Resources

*"We provide sustainable water supplies and healthy watersheds, while reducing flood risk for our communities."*



Morris Dam

**14**  
dams

Providing flood protection for  
**10 million** people  
and contributing to their water supply



## MAJOR PROGRAMS/SERVICES

Through the Los Angeles County Flood Control and Waterworks Districts, Public Works is responsible for Countywide water resource management, which includes flood risk management, water supply, and watershed health.

### Flood Risk Management and Water Conservation

The Los Angeles County Flood Control District was established under the Los Angeles County Flood Control Act in 1915. The Act empowered the District to provide flood protection, water conservation, recreation and aesthetic enhancement within its boundaries. The Flood Control District is governed, as a separate entity, by the County of Los Angeles Board of Supervisors.

On behalf of the Los Angeles County Flood Control District, Public Works constructs, operates, and maintains a regional system of flood control and water conservation facilities that provide flood protection and increase local water supply. The annual average expenditure of the Los Angeles County Flood Control District is \$275 million, with major funding from property taxes and a property benefit assessment for flood control.

The Flood Control District encompasses more than 2,700 square miles and approximately 2.1 million land parcels within 6 major watersheds. It includes drainage infrastructure within 86 incorporated cities as well as the unincorporated County areas. This includes 14 major dams and reservoirs, 483 miles of open channel, 27 spreading grounds, 3,380 miles of underground storm drains, 48 pump plants, 173 debris basins, 27 sediment placement sites, 3 seawater intrusion barriers and an estimated over 82,000 catch basins.

The reservoirs assist in recharging groundwater, which helps Los Angeles retain a supply of drinking water. Water from the reservoirs is released, as needed, and moves through a system of open channels into spreading grounds, where it replenishes groundwater basins by slowly percolating, or infiltrating, into the ground. The groundwater basins are accessed by wells, providing a valuable and reliable source of local drinking water.

# 250,000

residents have access to new recreation opportunities at Flood Control District facilities within one mile of their homes

By conserving water in reservoirs, Los Angeles County relies less on imported water from other areas of California. The flood control system ensures that the greatest amount of water is captured in reservoirs and diverted into spreading grounds instead of being lost to the ocean.

Local groundwater provides one-third of the region's water supply. The Flood Control District's spreading operations significantly help to recharge these local groundwater aquifers.

The Flood Risk Management Program includes planning; operation; maintenance; emergency storm response; storm drain rehabilitation; debris protection; floodplain management; public service; and construction of storm protection facilities, such as dams, channels, debris basins, storm drains, pumps, and removal of accumulated debris from reservoirs, debris basins, and debris retaining inlets.

Public Works also operates and maintains three seawater intrusion barriers along Los Angeles County's coastline. Often unnoticed because of their underground nature, these facilities serve as Los Angeles basin's fresh water sentinels. They protect a significant portion of the area's drinking water supply from ocean water, which constantly attempts to migrate into existing aquifers. Treated imported and reclaimed water is injected deep into the underground aquifers to block this inland migration of saltwater.

Another vital component of the Flood Risk Management Program is the removal of accumulated debris from the numerous reservoirs and debris basins, which protect nearby communities. Debris removal from the reservoirs also restores capacity, which the region needs for stormwater conservation.

## Integrated Regional Water Management Program (IRWMP)

Public Works leads the Greater Los Angeles County (IRWMP), the largest regional water management group in the State involving 30 regional water management agencies.

The IRWMP planning process successfully brings together and prioritizes water-related efforts in the region in a systematic way to ensure sustainable water uses, reliable water supplies, better water quality, environmental stewardship, efficient urban development, protection of agriculture, and a strong economy. Through IRWMP, Public Works partners with regional water stakeholders and agencies to implement regional solutions through open and collaborative stakeholder processes to promote sustainable water use in the Los Angeles region.

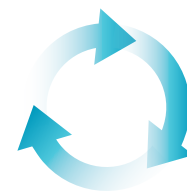
Since its inception in 2008, IRWMP has successfully secured more than \$127 million in water resource grants for 74 projects.

### In 2017-18, Public Works:

- Collaborated with 78 cities in 19 watershed groups to develop plans to improve stormwater/urban runoff quality.
- Invested \$86 million in Countywide stormwater quality improvements .
- Secured more than \$9.8 million in IRWM grant funding.

### Over the last 10 years, Public Works:

- **Increased the stormwater recharge capacity** at its facilities by approximately 17,680 acre-feet per year.
- **Invested more than \$161 million** in rehabilitating its dams and increasing their operational efficiency.
- **Invested more than \$58 million** in enhancing the capacity and operational efficiency of its spreading grounds and seawater barriers.



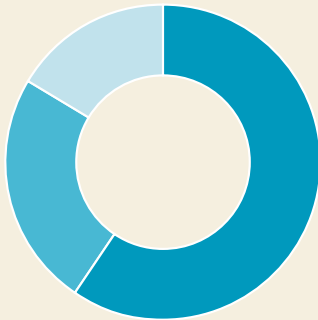
Public Works recharges enough groundwater from various sources annually to serve **1.9 million residents**



# 240,000


water customers served in  
Marina del Rey, Malibu,  
Val Verde, Acton, Kagel Canyon,  
Antelope Valley

## Average Annual Contribution to Regional Water Supply\*



 **200,000** acre-feet  
Stormwater

 **90,000** acre-feet  
Imported water

 **50,000** acre-feet  
Recycled water

## Water Utilities

Public Works also provides retail water service to over 240,000 residents through the management of five County Waterworks Districts, the Marina del Rey water system, and the Rancho Los Amigos Water System. The systems are comprised of 1,346 miles of water mains, 122 storage tanks, and 145 pump stations and includes the following five District areas:

- Malibu (SD3)
- Val Verde (SD5)
- Acton (SD5)
- Kagel Canyon (SD5)
- Antelope Valley (SD5)

The Los Angeles County Waterworks Districts operates out of three District offices (Alhambra, Malibu, and Lancaster) and maintains an award-winning online water account management system (MyWAM) for customers to easily access and manage their account online, anytime, anywhere and offers a “Live Chat” feature to enhance the customer service experience.

County Waterworks Districts also manages a robust water conservation program and is on track to meet the State mandate to reduce daily per capita water usage by 20 percent by the year 2020. The program includes:

- Residential Rebate Program - offering rebates to customers on a variety of water-saving devices.
- Cash For Grass Program - offering customers \$1 per square foot of grass replaced with water-efficient landscaping.
- Xeriscape Education Program - education on landscaping with plants that use less water.
- County iPhone application to report Water Waste.

County Waterworks has also partnered with the Cities of Lancaster and Palmdale for the design, construction, and operation of an 18 mile recycled water system and the use of recycled water in the Antelope Valley.

The annual budget for these Waterworks Districts is \$165 million and is financed primarily through water retail sales and general tax levy.

Over the last year, **21 low-flow diversions** have prevented around **182 million gallons** (equivalent to 5 million bathtubs) of polluted urban runoff from entering local waterways

## **Watershed Health Program**

Public Works is responsible for planning and implementing projects and programs to improve surface water quality in unincorporated County areas and is the lead Agency for the Los Angeles County Municipal Stormwater (MS4) Permit issued by the Regional Water Quality Control Board to the County of Los Angeles (unincorporated areas) and to the Los Angeles County Flood Control District (jurisdictional areas).

The current 2012 permit includes the County, the Flood Control District and 84 municipalities as permittees, and requires permittees to collectively control pollutant discharges into the municipal stormwater system and to meet 33 Total Maximum Daily Loads requirements. The permit requires a regional collaboration and Public Works is participating in 19 Watershed groups that were formed to complete watershed management plans to collectively develop and implement projects/programs to meet MS4 permit requirements and to identify opportunities for water quality projects that will also increase stormwater reuse and augment local water supply. These watershed groups have developed detailed plans that were approved by the Los Angeles Regional Water Quality Control Board.

Annually, the County invests over \$70 million in Countywide stormwater quality improvements.



Rio Hondo Spreading Grounds

## KEY ISSUES/CHALLENGES

- **Drought/Climate Change**

- Our region is subject to extended periods of drought with few, intense rain events.
- In April 2015, Governor Brown issued an Executive Order requiring a Statewide mandatory reduction of 25 percent in potable water use in response to the unprecedented drought.
- The Board responded by implementing the Waterworks District's Phased Water Conservation Plan, including water conservation surcharges in the Malibu/Topanga Canyon and Antelope Valley regions.
- Although the rainstorms of the past winter provided some relief and water conservation targets are no longer mandatory, outreach and education programs are in place to continue to strongly encourage water conservation throughout the Districts.
- Climate change is expected to reduce the reliability of imported water delivered to Los Angeles County. This will require an increased emphasis on development of local sources of water to increase the sustainability of our water supply.

- **Improving Water Body Health**

- Federal and State regulations establish water quality standards to protect the beneficial uses of water bodies, which include aquatic habitat and recreation. New regulations continue to be developed.
- Water bodies within Los Angeles County (rivers, lakes, and the ocean) are impaired by various pollutants, which negatively impact the aquatic habitat and recreation. Stormwater, urban runoff, and other discharges are a source of these pollutants.
- Many of these rivers and lakes are part of the urban flood control infrastructure belonging to the Flood Control District, such as the Los Angeles River, Verdugo Wash, and the Arroyo Seco Channel.
- The unincorporated areas of the County and the Flood Control District (along with other Cities in the County) are required to develop and implement programs to reduce pollutants entering water bodies. These programs are costly and existing funding is limited.
- The cost to meet water-quality standards in Los Angeles County is estimated at \$20 billion dollars over the next 20 years. Most local agencies lack a reliable source of revenue to meet the long-term challenges.

## KEY PRIORITIES

- **Improve Water Supply Resiliency**
  - Lead and coordinate efforts to establish a sustainable regional water supply through integrated water management.
  - Safe, Clean Water Program – provide local, dedicated funding to increase local water supply, improve water quality, enhance communities, and protect public health in Los Angeles County.
- **Manage Infrastructure**
  - Implement comprehensive assessment of water infrastructure and develop long-term plans for repair, replacement, and upgrade to optimize flood protection.
  - Develop a master asset management plan to assist in coordinating all operations and management activities and educating local communities.
- **Enhance Communities and the Environment**
  - Lead integrated efforts to address community drainage needs, improve water quality, increase stormwater capture, and enhance communities with restored habitats, recreational values, and aesthetic improvements.
  - Implement strategies that encourage multi-benefit project development.
- **Foster a Culture of Public Service**
  - Design and implement a public relations strategy that integrates education and outreach on water management practices, ongoing challenges, and future solutions.
  - Promote high quality service and responsible business practices by cultivating a skilled and community-minded workforce.

### Priority: Improve Water Supply Resiliency

1. Public Works continues to lead and coordinate efforts to establish a sustainable regional water supply through integrated water management as demonstrated by the following accomplishments:
  - Developing the Los Angeles County Water Plan (County Water Plan), integrating and building upon existing local and regional planning efforts to establish, articulate, and implement a bold, inclusive, regional vision for sustainable water management. The plan will help ensure LA County's water resources are safe, clean, reliable, sustainable, and available to all. The draft for public comment is anticipated to be released by mid-2021.
  - Chairing the Steering Committee for the development of the Las Virgenes Municipal Water District (LVMWD) White Paper, which evaluates the use of existing wastewater and stormwater infrastructure to create new regional water supplies; providing co-funding, and participating in technical review for the LVMWD White Paper. The white paper is on schedule for completion in early 2020.
  - Continuing to work with UCLA to develop the scope for a study which will further evaluate the impact of climate change on Flood Control District infrastructure.
  - Working with the City of Los Angeles Department of Water and Power on an agreement to recharge up to 3,500 acre-feet of recycled water annually at Hansen Spreading Grounds.
2. Public Works continues to lead Safe, Clean Water Program implementation. The Program will provide local, dedicated funding to increase local water supply, improve water quality, enhance communities, and protect public health in Los Angeles County. Accomplishments include:
  - In October, the Fiscal Year (FY) 2019-20 property tax bills were mailed with the new inclusion of the "SAFE CLEAN WATER" special parcel tax and will generate an estimated annual revenue of \$285 million.
  - The Call for Projects, as part of the Regional Program, was launched on October 15, 2019 and included 5 geographically distributed public information sessions for the public. Deadlines for FY20-21 and FY21-22 consideration are December 15, 2019 and July 31, 2020, respectively.
  - The first set of meetings (11 in total) for the Regional Program governance committees was completed in early November. Additional meetings occurred in December and are scheduled at a condensed frequency going forward during this first implementation year to facilitate the delivery of FY 2020-21 Stormwater Investment Plans to the Board by June 2020.
  - The 30-day public notice period for the General Income-Based Tax Reduction Program Procedures and Guidelines (the last of the tax relief programs) was completed in December.
3. Completed the construction of the Upper Amargosa Creek Recharge Project in partnership with the City of Palmdale, AVEK, and Palmdale Water District. This project consists of the construction of a permanent concrete California Aqueduct turnout structure, metering vault, and control building with conveyance pipeline. The 48-inch conveyance pipeline and turnout structure will transport water from the Aqueduct to the groundwater recharge basins alongside Upper Amargosa Creek. This project will provide the necessary infrastructure to expand groundwater basin banking and recovery operations in the Antelope Valley Region. The ribbon cutting ceremony was held on December 12, 2019.

### Priority: Manage Infrastructure

1. The Devil's Gate Reservoir Restoration Project is in the midst of sediment removal operations, with the end goal being the removal of 1.7 million cubic yards of sediment over the span of 4 years. During this first year of the project, over 445,000 cubic yards of sediment have been removed. At project completion, it will maintain a permanent maintenance area from which 42 acres can be cleaned of newly accumulated sediment on an annual basis. The project's Community-First approach has resulted in additional project measures including:
  - Ensuring trucks are in compliance with required emissions

- Conducting air quality monitoring
- Modifying traffic lights, and
- Additional community outreach

In addition, the project's habitat restoration component continues in the 70 acres surrounding the permanent maintenance area, resulting in the removal of extensive amounts of non-native vegetation, installation of temporary irrigation, application of native species seed, and installation of native species container plants.

2. Since FY 2017-18, Public Works has been preparing condition assessments for its water infrastructure. To date, the condition assessments for:
  - Spreading grounds are approximately 75 percent complete
  - Debris basins are 49 percent complete
  - Pump stations are 43 percent complete
  - Low flow diversion are 48 percent complete
  - Ocean outlets are 41 percent complete
  - Storm drains are approximately 23 percent complete.
  - Open channels are 33 percent complete
3. In May 2019, Public Works awarded a \$1.1M contract for the construction of the Avenue M and 5th Avenue East Wellhead Arsenic Treatment System Project, which will lower naturally occurring arsenic in the groundwater wells in Waterworks District 40, and in turn increase local water supply and resiliency during drought periods. Construction for the civil work began on October 23, 2019 and has a target completion date of January 2020. The installation of the arsenic treatment system will follow shortly after.
4. In October 2019, Public Works accepted the Los Angeles Section of the American Society of Civil Engineers' 2019 award for Flood Management Project of the Year for its collaborative, multi-pronged response to floodplain management issues arising from the 2018 Woolsey Fire.

### **Priority: Enhance Communities and the Environment**

1. Public Works continues to work toward the development of a Triple Bottom Line Cost/Benefit Tool as it continues to lead integrated efforts to address regional and community drainage needs.
2. Public Works advanced the development of the Los Angeles River Master Plan Update, due for completion by July 2020. The final three community meetings were held from October 15-17, 2019 in Canoga Park, North Long Beach, and Central LA. In addition, the final community partner event workshop was held on November 21, 2019 by East Yard Communities in Lynwood. The Steering Committee met on December 12, 2019 to review draft key chapters and components of the plan.
3. On November 5, 2019, the Board of Supervisors adopted a motion, introduced by Supervisor Hahn, authorizing the Flood Control District to enter into a Public-Private Partnership agreement with The Ocean Cleanup, a Dutch nonprofit organization, to deploy a trash Interceptor at the mouth of Ballona Creek to enhance ongoing efforts to prevent debris from entering the ocean. The agreement was formally executed on November 15, 2019 during a signing ceremony and press conference. The Interceptor is anticipated to be in place in the fall of 2020.
4. Public Works continues to construct five regional stormwater capture projects:
  - Carson Stormwater and Urban Runoff Capture at Carriage Crest Park Project
  - Roosevelt Park Stormwater Capture Project
  - Ladera Park Stormwater Improvements Project
  - Gates Canyon Park Stormwater Improvements Project

- Compton Creek Urban Runoff and Stormwater Capture Project at Earvin Magic Johnson Park Project

The projects will improve stormwater quality by diverting pollution away from our rivers, lakes, and streams. The projects all incorporate community enhancements such as new recreational features or drought tolerant landscaping. These projects are expected to be completed by summer 2020.

In addition, Public Works initiated the construction of the 103rd Street Green Improvement Project. The project will include bioswales, permeable concrete gutters, and drought tolerant landscaping. Construction of the project is scheduled to be completed by May 2020.

5. Public Works continues to work on the update of the County's Floodplain Management Plan (FMP), which is an overall strategy of programs (including a Program of Public Information), projects, and measures aimed at reducing the adverse impacts of flood hazards on the community. The FMP identifies and addresses the impacts caused by flood hazards and provides specific mitigation measures to help protect the properties and their occupants. To guide the development of the FMP update, Public Works formed a Steering Committee comprised of representatives from local government, non-profit groups, businesses, and members of the general public who meet with Public Works on a monthly basis. In October, Public Works participated in an Open House in the community of Malibou Lake to obtain feedback on what the FMP should include. Public Works is also utilizing social media and mailings to floodplain residents to encourage unincorporated area residents to fill out a survey to gauge their understanding of flood risk. Survey results will be compiled in winter 2020. The FMP update is anticipated to be completed in Fall 2020.
6. Public Works continues to provide technical assistance to the Woolsey Fire communities of Malibou Lake and Seminole Springs in their efforts to restore their recreational lakes.

### **Priority: Foster a Culture of Public Service**

1. Continued exercising Workforce Reinvestment strategies, which aim to identify opportunities to decrease external contracting and develop in-house resources: In doing so, budget requests were initiated for the acquisition of capital assets and equipment, as well as additional staff, to proceed with building the rightsized workforce to deliver the highest level of customer service by in-house staff.
2. The Los Angeles County Flood Control District (District) has implemented a multimedia, anti-littering outreach campaign in the Ballona Creek watershed to help reduce the pollutants that enter the creek. The campaign's primary objective is to increase the awareness and knowledge of the residents in the watershed through multi-platform public outreach which includes billboards, digital ads, transit stop ads, bike path signs, and educational brochures. The educational brochures were distributed at various retail stores, libraries, and community events. Campaign materials were produced in English and Spanish to maximize public outreach. The campaign was estimated to have garnered approximately 15 million impressions. The District is in the process of developing multilingual materials to expand these efforts Countywide.
3. Public Works continues to meet and work collaboratively with non-governmental organizations, such as OurWaterLA, a coalition of environmental groups which includes, among others, LA Waterkeeper, Natural Resources Defense Council, Heal the Bay, Nature for All, and Treepeople, to discuss and identify stormwater project objectives, ideas, and priorities. A recent meeting provided a forum for the County to share its efforts and progress with implementing complete green street projects incorporating nature-based solutions such as infiltration galleries and dry-wells, bioswales, and drought-tolerant landscaping with road, pedestrian, and mobility projects. Quarterly meetings have been scheduled to continue this conversation, to offer project updates, and strengthen relationships among public stakeholders of these projects.
4. Public Works engineers continue to participate in the STEM (Science, Technology, Engineering, and Math) Program at local schools by incorporating these concepts into real-world, public works projects. The program inspires students to think and learn using these concepts in a cohesive manner, bringing their understanding to their families at home, and inspiring careers in these industries. Recently, the STEM Outreach Program participated in the Youth Mobile (YoMo) STEM Conference at the LA Convention Center from October 22-24, 2019. The three-day STEM conference invited over 15,000 students from the Los Angeles region. Public Works hosted an exhibitor booth where students were able to learn about the different core service areas. Water Resources Core Service Area engineers taught students about watersheds and how to create a more water resilient LA.



# Transportation

*"We provide safe, clean, efficient transportation choices and rights-of-way to enhance mobility and quality of life."*





**74 %** of residents in unincorporated Los Angeles County live within 1 mile of a bicycle network

**68%** of residents in unincorporated Los Angeles County live within 1/4 mile of public transit

## MAJOR PROGRAMS/SERVICES

Public Works' Transportation Core Service Area promotes Countywide mobility and multimodal transportation opportunities, managing over 4,200 centerline miles of County and contract city roads, transportation infrastructure, programs, and services including:

### Road Infrastructure

Public Works manages the County Transportation Improvement Program for road improvement projects and annual operations and maintenance efforts, funded primarily from gas tax funds, Proposition C, Measure R, and new Measure M Local Return funds, and Federal, State, regional grant programs. Projects include traffic safety and operational improvements, pavement rehabilitation, roadway drainage, active transportation, street lighting, green street, and beautification projects.

Road Maintenance and Operations staff operate out of field facilities located throughout the County and provide comprehensive maintenance activities and emergency response, including pavement patching and resurfacing; litter and debris removal; sidewalk, curb, and gutter repair; guardrail maintenance; snow removal; street sweeping; median landscape maintenance: street lighting; vegetation control; bike path maintenance; tree trimming; parkway maintenance; traffic signing and striping; pavement marking; and traffic signal operations and maintenance.

### Bridge Infrastructure

Public Works inspects and maintains 533 County-owned bridges and inspects 1,168 city-owned bridges under contract city services. Public Works is also responsible for safety inspections and evaluations of 1,277 highway bridges listed in the National Bridge Inventory within Los Angeles County and serves as the lead agency for the seismic retrofit of nonstate-owned bridges within Los Angeles County as part of the Statewide Seismic Safety Retrofit Program.



## Traffic Programs & Services

The County leads a multijurisdictional Traffic Signal Synchronization and Intelligent Transportation System effort, which has provided approximately \$275 million dollars' worth of improvements to nearly 70 agencies Countywide through the Los Angeles County Metropolitan Transportation Authority's Call for Projects bi-annual grant funding program.

Public Works also monitors and controls traffic signals Countywide from its state-of-the-art Traffic Management Center in Alhambra and manages additional traffic safety programs and services such as the following:

- Suggested Routes To School Program
- County Lighting Maintenance Districts (Streetlights)
- Traffic Safety and Vision Zero
- Los Angeles County Highway Safety Commission (HSC)

## Bicycles & Pedestrians

Public Works is responsible for the development, and maintenance of the County's bikeway system and the implementation of the County of Los Angeles Bicycle Master Plan adopted by the Board in 2012. The Master Plan will more than quadruple the amount of bikeways from 144 miles to over 800 miles within 20 years. Through Federal, State, and local grant programs, the County was awarded over \$30 million for bicycle and pedestrian projects from the State Active Transportation Program and other Metro grant programs since 2015.

## Public Transit

Public Works provides local fixed-route transit service to over 3.3 million riders annually and paratransit (dial-a-ride) service in unincorporated areas to meet the needs of community residents, providing access and intermodal transportation mobility and connectivity.

During the summer season, Public Works provides transportation to the Hollywood Bowl and area beaches. Other activities include the operation and maintenance of park-and-ride lots, bus stop shelter maintenance, and advertising programs. Transit services are primarily financed with the County's share of Proposition A Local Return, local sales tax funds.

## Active Transportation & Healthy Communities

The Department of Public Health identified communities throughout the County with a need for improved health outcomes. In collaboration with other County departments, Public Works' Transportation Core Service Area has a key role in helping to address this challenge through transportation programs and improvements that promote walking, bicycling, transit use, and safety. These active transportation programs increase the public's transportation choices, provide improved connections to transit hubs and destination centers, and improve health outcomes by promoting healthy lifestyles, reducing reliance on automobile travel, and reducing greenhouse gas emissions.

## Traffic Safety and Vision Zero

In collaboration with the Department of Public Health and with the support of other County departments, Public Works is establishing an Action Plan to carry out the County's Vision Zero Goal, an effort to reduce and eventually, eliminate traffic-related fatalities and severe injuries on County roadways. This multifaceted initiative relies on a combination of strategies relating to engineering, enforcement, education and evaluation of data and outcomes to continually strive toward zero traffic fatalities.

## Aviation

Public Works oversees the operation, maintenance, and development of five County-owned general aviation airports:

- San Gabriel Valley Airport in the City of El Monte (SD1)
- Compton/Woodley Airport in Compton (SD2)
- Whiteman Airport in Pacoima (SD3)
- Brackett Field Airport in the City of La Verne (SD5)
- General William J. Fox Airfield in Lancaster (SD5)

Altogether the County-owned airports encompass 1,750 acres and nearly 6 miles of runway, are home to over 1,800 general aviation aircraft and over 55 privately-owned aviation businesses, and accommodate just over 330,000 aircraft takeoffs and landings each year. These airports are a vital part of the nation's integrated transportation system and also play a vital role in regional and local area emergency response.

**\$200+ Million** spent annually on street and road operation, maintenance and safety programs

## KEY ISSUES/CHALLENGES

### • **Infrastructure State of Good Repair**

- Funding for County Transportation Improvement Program projects, and operations and maintenance efforts, primarily comes from:
  - Gas tax funds
  - Senate Bill 1 (Beall) provides significant new revenues for road repair and rehabilitation, maintenance, and safety programs beginning in FY 2017–18
  - Local sales tax measures (Proposition C, Measure R and Measure M)
  - Federal, state, and regional grant programs
- Emphasis on rapid rollout of SB 1 – funded projects that the public can see to demonstrate the benefits of the new transportation tax dollars.
- Thoughtful allocation of transportation funds to ensure an effective balance between infrastructure repair needs and ongoing operation, maintenance, and safety programs that promote livability and quality of life of our communities.
- Capitalizing on new sub-regional Measure M funding to promote mobility and active transportation in and around unincorporated area communities.
- Proper planning and implementation cannot always account for natural disasters, as the devastation of the Woolsey Fire has had a significant impact on County transportation infrastructure.
  - The fire, which spread from neighboring Ventura County, laid a path of devastation that saw the destruction of thousands of structures and hundreds of homes and also damaged critical transportation infrastructure. The fire damaged or destroyed 3 bridges, countless miles of guardrail, timber and rail walls for embankment support, as well as roadside drains that are critical to flood control during storm events.
  - Although the impact to the County’s transportation infrastructure pales in comparison to the devastation and loss felt by our constituents and property owners, the impact to recovery efforts for transportation infrastructure has forced a significant re-deployment of resources and personnel.
  - Dozens of employees from every area within Public Works have been deployed in various capacities to assist with the recovery efforts, from providing guidance for potential mudflow events, emergency openings of roadways, to the design and implementation of emergency repairs for other critical infrastructure, and for the coordination of multi-agency efforts to ensure uniform and consistent recovery operations.

### • **Providing For the Needs of All Transportation System Users**

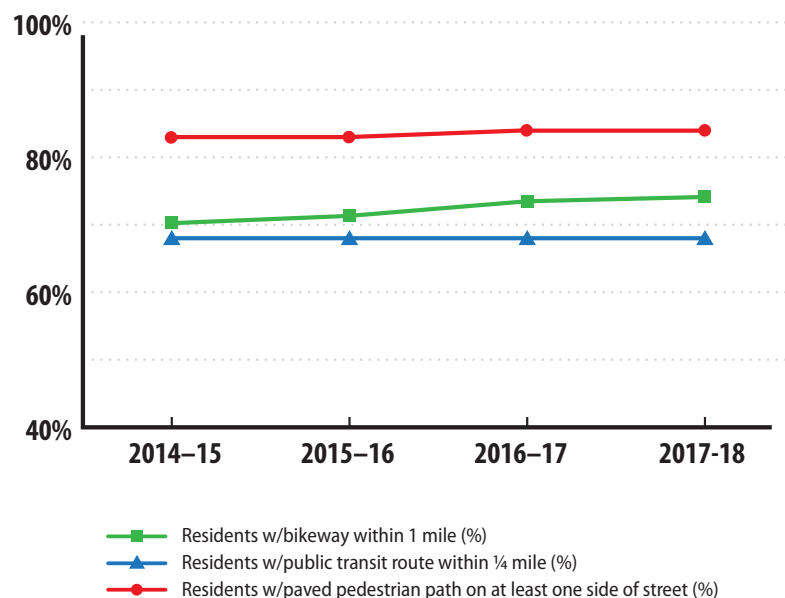
- The duty to provide ongoing adequate investment in state of good repair for the aging bridge, pavement, and sidewalk infrastructure and safety and congestion management.
- Ensure that Public Works address community values, safety, and compliance which encompasses the consistent implementation of multimodal and sustainable transportation plans, policies, and projects.
- Create a culture of innovation that promotes economic, environmental, and community-based sustainable maintenance and management of public infrastructure, including the County’s urban forest.
- Improve customer service, transparency, and communication through enhanced and sustainable programs, systems, and initiatives.

# 9 Sub-regions/Councils of Government in the County (Arroyo Verdugo, Central Los Angeles, Gateway Cities, Las Virgenes/Malibu, North Los Angeles County, San Fernando Valley, San Gabriel Valley, South Bay Cities, and Westside Cities)

## KEY PRIORITIES

- **Infrastructure Asset Management**
  - Improve, enhance and maintain pavement, bridges, sidewalks, traffic control devices, street lighting, and roadway infrastructure in a state of good repair
  - Develop an asset management plan to initiate planning efforts for long-term improvements, ongoing operations, and resilience from natural disasters.
- **Innovation, Planning, and Sustainability**
  - Develop the framework for innovative, active, and sustainable transportation planning.
  - Implement sustainable transportation planning policies that promote transit use, reduce car dependency, reduce greenhouse gases, and that support development of affordable housing.
- **Vision Zero and Transportation Safety**
  - Begin implementation of Public Works' Vision Zero Action Plan.
  - Consistently monitor the safety of the transportation network and deliver traffic safety projects and enhancements for all users.
- **Sustainability of Transportation Funding**
  - Identify and implement cost effective methods for maximizing available funding sources for the delivery of services, projects, and programs.
  - Promote integration of non-traditional funding sources and cost-sharing strategies in the development of project budgets.

## Multi-Modal Transportation



### Priority 1: Infrastructure Asset Management

1. Obtained Board approval of the sale and license agreements with Southern California Edison (SCE) for acquisition of 39,000 street lights serving unincorporated County areas in May 2019. Currently evaluating financing options for acquisition and LED conversion of the streetlights.  
  
Continued collaboration with the County's Homeless Initiative, Public Health, Regional Planning, Sheriff's Department, and County Counsel to implement the recommendations outlined in previous reports to establish a pilot, focused on sustainable solutions to assist individuals living in vehicles in the unincorporated West Rancho Dominguez, Rosewood, and Willowbrook communities.
2. The pilot will include solutions related to the following three areas of concern: (1) the proper disposal of unclaimed, dilapidated, and hazardous Recreational Vehicles (RV); (2) minimizing improper disposal of RV waste; and (3) the creation of safe parking program.
3. Supported the recovery efforts for Disaster Areas impacted by the Woolsey and Creek Fires.  
  
Coordinated efforts for disaster recovery funding through Federal Highway Administration, Federal Emergency Management Agency, (FEMA) and California Office of Emergency Services. The total damages to Public Works infrastructure related to fires impacting the County and subsequent rain storms is currently estimated at \$180 million, which includes \$75 million related to transportation infrastructure.
4. Managed the infrastructure recovery plan for the County's critical transportation infrastructure, including the development of projects for the replacement of guardrails, rail and timber walls, and permanent restoration of critical bridge structures that burned in the Woolsey Fire. Guardrail projects are essentially complete. Solicited construction bids for two bridge repair and replacement projects for construction in 2020.
5. Awarded contract for a capital improvement project for Brackett Field Airport. The project will reconstruct approximately 40 acres of airport apron and ramp pavement.
6. Launched a 3-month pilot program to provide enhanced services for the East Los Angeles area to combat an increase in illegal dumping and illegal vending activities. Additional crews have been working overtime to patrol and remove illegally dumped materials, including hotspot locations identified by the community.
7. Completed 7 pavement improvement projects funded with Senate Bill 1-Road Maintenance and Rehabilitation Account (RMRA) totaling \$13.6 million in construction contracts, and awarded \$15.6 million in construction contracts for an additional 3 projects.
8. Implemented a Cool Pavement Pilot Project, which aims to measure the effectiveness of cool pavements, which are special light-colored coatings that are applied to pavement surfaces to reflect sunlight and stay cooler than traditional road pavements. The project in the unincorporated County community of Covina will test four different coatings and will measure cooling effects, longevity of coatings, and cost effectiveness. Public Works partnered with the University of Southern California to collect data and to complete the analysis by early 2020.
9. The County's Traffic Safety Program has continued to grow, with 108 identified projects, of which 21 are in the construction phase.
10. Continued to work with the Castaic Town Council to complete improvements associated with the Interstate 5 Emergency Mobility Action Plan to mitigate impacts from unpredictable closures of the freeway. Future improvements include new traffic signals on The Old Road at Parker Road, and Ridge Route Road at Castaic Road. Also, completing design of a plan to modify the roadway striping for adjacent roadways to address concerns from the community. The new striping is anticipated to be installed in spring 2020.
11. Public Works launched a 3-month pilot program in early November to provide enhanced maintenance services for the East Los Angeles community. Public Works crews have been working overtime to patrol and remove illegally dumped materials. The crews focus on the hotspot locations identified by the community.
12. Advertised and awarded a construction contract to reconstruct approximately 38 acres of the apron ramp area at Brackett Field Airport. The airport ramp/apron areas are severely degraded and in need of rehabilitation. Construction is scheduled to start at the end of January 2020 with a duration of 12 months.

13. 13. Advertised and awarded a construction contract to reconstruct the runway and taxiway connectors at General William J. Fox Airfield. The runway pavement is severely degraded and has numerous separations. Construction is scheduled to start in February 2020 with a duration of 10 months.

## Priority 2: Innovation, Planning, and Sustainability

1. Received funding for the Vermont Manchester Transit Priority Affordable Housing and Sustainable Communities (AHSC) Project. The project includes 180 affordable housing units and \$6 million of transportation improvements in the City of Los Angeles and the unincorporated County.
2. Continued collaboration with County departments and affordable housing developers to define improvements and prepare applications for the Affordable Housing Sustainable Communities (AHSC) grant program, Round 5. Public Works conducted a site visit to further present transportation improvement opportunities and further refine which improvements would be included in the application.
3. Continued development of the Rosemead Boulevard Complete Streets Project through collaboration with stakeholders. Continued efforts to pursue an interim project for Rosemead Boulevard, consistent with the Emerald Necklace Bikeway prioritized projects.  
  
Reinitiated efforts to implement two other Emerald Necklace Bikeway projects, including a bridge over San Jose Creek to connect the existing San Jose Creek Bike path with the Duck Farm along the San Gabriel River.
4. Continued collaboration with the San Gabriel Valley Council of Governments on planning efforts for a future San Gabriel Valley Greenway Network.
5. Published the Draft East San Gabriel Active Transportation Plan for public review and comment. This plan will identify high priority corridors within 21 East San Gabriel Valley unincorporated communities and propose specific active transportation improvements along 3 corridors.
6. Continued construction of the Slauson Avenue Traffic Signal Synchronization Program (TSSP) project from Shenandoah Avenue to Rimpau Boulevard in the unincorporated County areas of Ladera Heights, Baldwin Hills, and Windsor Hills, as well as the City of Culver City. Construction is expected to be completed by March 2020.
7. Continued the design of 13 future TSSP projects involving 299 intersections in the cities of Artesia, Baldwin Park, Bellflower, Carson, Cerritos, Commerce, Compton, Culver City, Downey, El Monte, El Segundo, Gardena, Hawthorne, Industry, Inglewood, Irwindale, Lakewood, La Mirada, Lawndale, Long Beach, Los Angeles, Lynwood, Montebello, Pico Rivera, Pomona, Rosemead, Santa Fe Springs, South Gate, Temple City, Walnut, and Whittier. These projects have an estimated cost of \$33 million.
8. Continued design of the Gateway Cities Fiber Optic Communications and Closed-Circuit Television Camera (CCTV) Project which will install fiber optic communications and 13 CCTV cameras at key intersections in the Gateway Cities area. The Project will establish fiber optic communication connections with the Cities of Downey, Norwalk, Santa Fe Springs, and South Gate to enable enhanced traffic coordination. Construction expected to begin mid-2021.
9. Awarded the South Bay Arterial Performance Measurement Project. The project will install travel time devices, wireless magnetometers and radio communications along Main Street, Broadway, and Normandie Avenue between the I-105 and SR-91 Freeways. Construction to begin December 2019.
10. Developed an action plan to produce a comprehensive update to and expansion of the County's Bicycle Master Plan, including a tentative scope of work, schedule, and cost estimate. The update will include revising the existing list of bikeways, removing locations determined infeasible, and proposing new locations; incorporation of first last mile improvements to connect bikeways to transit stations and bus stops; and incorporating policies and guidelines for shared bikeway infrastructure with micro-mobility devices. The update is expected to take 3.5 years and cost \$4 million to complete.
11. Conducted public outreach for the Transit-Oriented District (TOD) Design Guidelines at libraries, the Farmers Market, and community group meetings. The TOD Design Guidelines will formulate, build, and support potential TOD rail sites in or within a ½ mile radius of unincorporated County. Public outreach also included sending 3,500 mailers to residents and owners in the project area and posting flyers in the neighborhood.

### **Priority 3: Vision Zero and Transportation Safety**

1. Developed for Board of Supervisors consideration, an Action Plan titled “Vision Zero Los Angeles County – A Plan for Safer Roadways, 2020 to 2025 (Plan)” through collaboration with the California Highway Patrol and other County Departments.
2. Developed a Vision Zero website, [www.VisionZeroLACounty.com](http://www.VisionZeroLACounty.com) to provide communities with information regarding the Vision Zero Plan.
3. Scoped various transportation safety elements along Vision Zero corridors for inclusion in future Road Maintenance and Rehabilitation Account funded projects.
4. Currently developing funding and implementation plans for traffic safety programs.

### **Priority 4: Health of Transportation Funding**

1. Implemented short term steps to reduce the potential for future budget shortfalls by reducing expenditures and by increasing available reimbursement for disaster repairs.
2. Developed medium and long-term cost cutting measures for future fiscal years.
3. Submitted requests to the County’s Chief Executive Office (CEO) for additional funding for existing programs that are unfunded.
4. Obtained \$1.165 million in Measure M funding from the South Bay sub-region.

# Environmental Services

*"We lead, inspire, and support our communities toward a healthy, waste free future."*







## MAJOR PROGRAMS/SERVICES

Public Works is the lead County agency responsible for advising the Board of Supervisors on waste management issues and manages numerous Countywide, regional, and unincorporated area programs that monitor, regulate, and manage the collection, treatment and disposal of solid and hazardous waste.

Los Angeles County has the most complex solid-waste management system in the nation, comprised of 10 municipal solid waste landfills, 1 waste-to-energy facility, 12 inert-waste landfills, over 70 materials recovery, transfer/processing and organics management facilities, and over 100 permitted waste haulers.

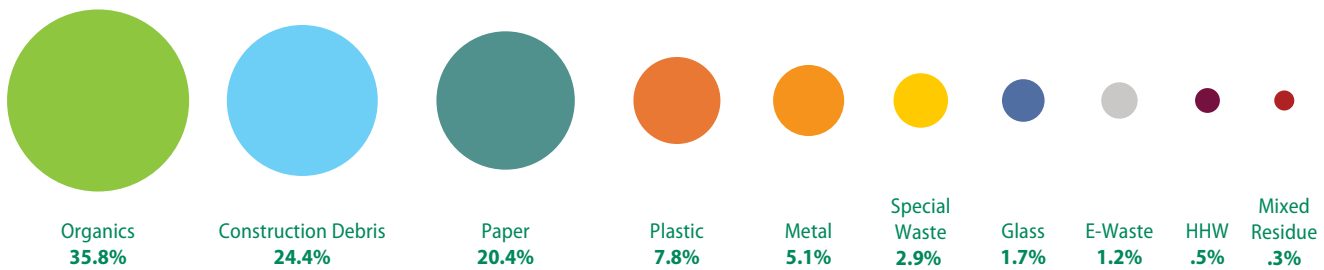
### Waste Collection and Disposal

Public Works provides trash collection service for approximately 1.1 million unincorporated area residents and nearly 20,000 businesses through comprehensive waste collection franchises and Garbage Disposal District systems. In the Antelope Valley, residential trash collection services are provided to approximately 100,000 residents through an open-market competitive system. Each year, about 2.8 million tons of solid waste is generated in the unincorporated areas of Los Angeles County of which approximately 0.9 million tons is disposed of at landfills.

### Waste Diversion Programs

In 2014 the County Board of Supervisors adopted the Roadmap to a Sustainable Waste Management Future (Roadmap). The Roadmap lays out a general framework for the strategies and initiatives that the County can implement to decrease reliance on landfills by maximizing the recovery of products, materials, and energy from waste that would otherwise be disposed. The Roadmap includes recommended strategies, initiatives, and disposal reduction targets to achieve 95 percent diversion by 2045.

## County Waste Stream



Public Works manages numerous County unincorporated area and Countywide award-winning solid waste reduction and recycling programs, including the Countywide Household Hazardous and Electronic Waste (HHW/E-Waste) Management Program, which collected and managed over 7,219 tons of HHW/E-Waste in FY 2018-19. The HHW/E-Waste Program is being expanded by developing Reuse Centers at the two County-operated permanent collection centers. Other key programs include:

- Environmental Education & School Outreach (Environmental Defenders, Generation Earth Programs and School Gardening Programs)
- Smart Gardening Program
- Smart Business Recycling Program
- Construction & Demolition Debris Recycling Program
- Waste Tire Recycling Program
- Mattress Recycling Program

### Integrated Waste Management Planning

Public Works is responsible for ensuring that the County unincorporated areas comply with waste diversion mandates, preparing and implementing the Countywide Integrated Waste Management Plan, and ensuring long-term disposal capacity for the County and its 88 cities in accordance with the California Integrated Waste Management Act of 1989 (AB 939). Public Works serves as chair of the County Integrated Waste Management Task Force (Task Force).

The Task Force is comprised of representatives from local government, the solid waste management and recycling industry, members of the general public, the business sector, and environmental groups to collaboratively plan the County's solid waste management needs.

### Industrial Waste Control Program

Public Works provides industrial waste services for the unincorporated areas of the County and 37 contract cities, including inspection of 8,000 permitted industrial waste pretreatment systems, and enforcement against illegal, harmful industrial waste discharges to the sanitary sewer system and surface waters.

### 2017 Waste Generation in Unincorporated County:

- Population: **1.1 million**
- Waste generation: **2.9 million tons**
- Equivalent to **14.6 pounds per person per day**

### 2017 Waste Disposal in Unincorporated County:

- **0.9 million tons** disposed in landfills
- Equivalent to **4.7 pounds per person per day**

# 7,219 tons

Household Hazardous Waste/E-Waste Collected

# 50,989 gallons

Used-motor oil collected at  
County used-motor oil Permanent centers  
FY 2018-19

# 12.9 tons

Batteries collected at  
designated County Libraries  
FY 2018-19

## Underground Storage Tank Program

Public Works permits, monitors, and inspects underground storage tanks within the unincorporated areas of the County and 77 cities for compliance with local, state, and Federal requirements. Currently, Public Works is monitoring over 4,400 underground tank systems in the County to protect public health and safety, as well as groundwater.

## Industrial/Commercial Facilities Program

Public Works inspects and issues certificates of inspection for over 3,100 facilities within the unincorporated areas to implement Best Management Practices to protect stormwater and our waterways.

## KEY ISSUES/CHALLENGES

- Residents and businesses in Los Angeles County currently generate 30 million tons of solid waste per year, of which 2.9 million originates from unincorporated areas. The sustainable management of this waste is a major challenge, which involves waste collection, outreach and education, maximizing waste reduction and recycling, development of alternatives to landfills, and ensuring adequate disposal capacity for the waste that cannot be recycled or otherwise diverted. Waste disposed at landfills is also a major source of greenhouse gases that contributes to climate change.
- There is limited potential for new in-County landfill capacity to meet the long-term disposal needs of Los Angeles County.
- China's National Sword Policy, which was announced in 2017 and took effect in 2018, has created challenges for California's recycling markets by restricting the import of recyclable materials such as low-grade plastics, unsorted mixed paper, and scrap metals.
- Los Angeles County has inadequate organic waste management infrastructure to achieve the Countywide organic waste reduction targets established by SB 1383.
- Industrial waste discharges and the underground storage of hazardous materials, if not properly managed, can lead to surface and groundwater contamination which impacts health and safety and the environment.

- In November 2018, the Woolsey Fire disaster burned 96,949 acres of land in the cities and unincorporated communities of Agoura Hills, Calabasas, Hidden Hills, Los Angeles, Malibu, and Westlake Village impacting public health and safety, personal and private property, infrastructure and watersheds. Public Works led debris removal efforts, which included a State-sponsored and a local debris removal program which assist property owners to responsibly clear their properties of fire debris and prepare for rebuilding.
- Aging infrastructure and varying management practices has reduced the effectiveness and reliability of the sewer infrastructure.

## KEY PRIORITIES

- **Sustainable waste management and recycling programs and services**
  - Implement Strategies and Initiatives in the County's Roadmap to a Sustainable Waste Management Future to decrease reliance on landfills and achieve zero waste by 2045, with respect to the following three focus areas:
    - County Unincorporated Communities
    - Regional Countywide
    - County Operations
  - Continue to support the County's Homelessness Initiative by implementing the Food Donation Recovery and Outreach Program (Food DROP) to address the issues of food insecurity and organic waste management.
  - Mass Debris Removal
    - Woolsey Fire Recovery Efforts
      - Lead the Environmental Branch of the County's recovery efforts.
      - Manage debris removal efforts, including the State-sponsored and local debris removal programs.
      - Conduct outreach to property owners to encourage 100 percent participation and compliance.
      - Ensure maximum cost recovery, including insurance proceeds and reimbursement from FEMA and/or CalOES.
  - Illegal Dumping
    - Illegal dumping continues to impact roads, streets, and alleys in the County unincorporated areas. As part of its efforts to discourage illegal dumping and encourage residents to report it for cleanup when they see it, Public Works continues to conduct education and outreach campaigns which includes media outreach, bus shelter advertising, and other efforts.
- **Reduce carbon fuel emissions generated by Public Works Fleet**
  - Clean Fuel Fleet
    - Incorporate clean fuel vehicles, such as electric and CNG into the Public Works Fleet.
  - Southern California Edison Charge Ready Program (CRP)
    - Public Works entered into an agreement with Southern California Edison's to participate in their Charge Ready Program. Through the Charge Ready Program 46 Workplace Electric Vehicle Charging Stations will be installed at Public Works Headquarters. Access to these 46 charging stations will be limited to employees only.

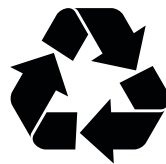
- **Develop a sustainable sewer system infrastructure**
  - Ensure the sewer system is sustainable through risk-based condition assessment of the infrastructure, coordinated maintenance operations, and collaboration with member cities and County departments.
  - Address problematic sewerage in identified communities
    - Ensure the sanitary sewer collection system facilities are properly operated, maintained, and managed to reduce frequency and severity of SSO events and their potential impacts on public health, safety, and the environment while meeting applicable regulations and laws.
- The Regional Water Quality Control Board has called for the refurbishment of the Malibu Mesa Wastewater Reclamation Plant by December 2022.
  - The Malibu Mesa Wastewater Reclamation Plant (WRP) was built in 1978. Public Works currently operates and maintains this facility in order to treat domestic wastewater generated by Pepperdine University and the single-family homes within the Malibu Country Estates located in the City of Malibu.
  - The Malibu Mesa WRP has reached the end of its life cycle and no longer conforms with water discharge permit requirements. There is consensus among all stakeholders that the Malibu Mesa WRP requires refurbishment.

## 2018 Solid Waste Quantities in Los Angeles County

Generation = Diversion + Disposal



Amount of trash generated  
**30 million tons per year**



Amount of trash diverted  
**19.5 million tons per year**



Amount of trash disposed  
**10.5 million tons per year**

### Priority: Sustainable waste management and recycling programs and services

#### 2014 Roadmap to a Sustainable Waste Management Future

1. Due to new laws and regulations and changing market conditions, Public Works began the process to update the Roadmap, which will be submitted to the Board of Supervisors for approval in October 2020. Steps taken to update the Roadmap included the following:
  - Hosted the Roadmap 2020 Kickoff Meeting on Thursday, December 5, 2019, at Public Works Headquarters in Alhambra, CA.;
  - Created an updated Roadmap Briefing Document to provide an overview of important topics impacting the County's waste diversion programs and efforts;
  - Scheduled meetings with each Board of Supervisor office to share information about the Roadmap and obtain input on recommended modifications; and
  - Developed a stakeholder engagement strategy to implement in 2020.
2. Continued implementing 2014 Roadmap initiatives focusing on organic waste management, illegal dumping, and recycling for:

#### County Unincorporated Communities (CUC)

Public Works is assisting the County Chief Sustainability Office on drafting an ordinance for consideration by the Board of Supervisors that would reduce the use of single-use plastics in the unincorporated areas of Los Angeles County.

The County's Organics Program provides significant environmental and social benefits for the County. As of December 2019, the Program recovered almost 40 tons of edible food and diverted almost 1,800 tons of food waste from landfill disposal. The Food Donation and Food Waste Recycling Initiative has prevented 1,000 tons of carbon dioxide equivalent of emissions, offsetting the annual emissions of over 200 passenger vehicles or 20 homes.

#### Regional/Countywide

Public Works continued administering the Smart Gardening Program and conducted 17 Beginner Workshops and 10 Advanced Workshops.

Public Works received a \$90,000 CalRecycle waste tire amnesty grant on September 18, 2019. On October 29, 2019, the Tire Recycling Program contract to conduct waste tire recycling events throughout the County was renewed with a focus in the Antelope Valley where illegal dumping of tires is a problem.

Public Works worked with various schools throughout the County to install green gardens to enrich students' knowledge about the benefits of gardening to the environment and their well-being.

On October 15, 2019, the Board of Supervisors unanimously adopted a motion to pursue sponsorship of legislation to provide dedicated, long-term funding to spur investment in recycling and organic waste diversion infrastructure and local market development. Public Works will be collaborating with the County's legislative advocates in Sacramento to pursue legislation and engage with stakeholders. The legislative proposal would:

- Address China's National Sword Policy impacts, which have tremendously affected California;
- Provide dedicated funding of at least \$200 million per year for material recovery facilities to invest in advanced equipment capable of further separating materials to meet higher contamination standards;
- Expand the State Recycling and Market Development Zone Program, which provides low-interest loans to businesses that manufacture recycled-content products or process materials for recycling; and
- Remove barriers for implementing advanced conversion of post-recycled residual solid waste

## **County Operations**

Through the Departmental Recycling Program, 12 beverage recycling container bins were distributed to various County facilities.

To date, waste assessments were conducted at 24 County facilities. The assessments will be used to provide a Resource Management Plan (RMP) to each facility manager. During this quarter, RMPs for 3 facilities were completed, bringing the overall count to 14 completed RMPs out of the 24 site assessments. The RMPs provide recommendations for increased diversion, including changes in operations and services, additional equipment, and other ways to divert more materials from being landfilled while potentially reducing costs, energy, and resource consumption.

The Scrape Your Plate Program at Public Works Headquarters continues to thrive. This quarter there was a 13 percent increase in food waste collection totaling over 37,000 pounds since the program began in Fall 2017.

## **Outreach and Education**

The County's Quality and Productivity Commission awarded a Top Ten Productivity and Quality Award to Public Works' Food Donation and Food Waste Recycling Initiative, which is comprised of the Food DROP, Commercial Food Waste Collection Pilot, and Scrape Your Plate Programs. This Initiative also received a California State Association of Counties (CSAC) Merit Award which was presented to the Director of Public Works at the November 12, 2019 Board meeting.

A Waste-Free Event Guide was developed to provide a simple checklist of activities and equipment necessary for conducting waste-free events. This guide was showcased at environmental outreach events Countywide and will be provided to County departments to share with their event coordinators, vendors, permittees, venues, employees, and residents.

Public Works continued to host events throughout the County to educate residents and business about the Food Drop program. On Friday, October 4, 2019, Public Works hosted another Day Without Hunger food distribution event at Bassett Park in La Puente where over 275 residents received free fruits, vegetables and pantry food items.

To encourage and educate residents regarding illegal dumping, media campaigns in both English and Spanish were conducted in partnerships with ESPNLA and Lotus Communications. Public Service Announcements were broadcasted in English during games with the Los Angeles Rams and in Spanish during the Los Angeles Lakers and Clippers, LA Galaxy, and Los Angeles Football Club games. These campaigns included web banners, social media and billboards and garnered millions of audience impressions informing residents on how to prevent and report illegal dumping.

Public Works launched a media campaign in partnership with iHeartRadio/KOST FM to educate the public on environmental initiatives focusing on waste reduction during the holidays and the proper disposal of Household Hazardous Waste and Electronic Waste (HHW/E-Waste). Public Works also participated in over 30 community events this quarter to educate residents on programs such as recycling, Bring Your Own (to encourage reuse), proper disposal of HHW/E-Waste, and general waste reduction.

## **Waste Characterization Study for Los Angeles County Unincorporated Areas**

Based on the findings from the waste characterization study previously conducted, Public Works is finalizing plans to reduce waste in County Unincorporated areas.

### **Commercial Food Waste Collection Program**

Under the Commercial Food Waste Collection Program, the participating waste hauler collected food waste from businesses which is sent to the Puente Hills Material Recovery Facility for pre-processing. The food waste is eventually anaerobically digested at the County Sanitation Districts' Joint Water Pollution Control Plant in Carson, CA. The Program began in July 2016 and will be extended through December 2021 to increase program participation. The plan is to expand the program by including more waste haulers. To date, the pilot program has successfully diverted approximately 1,700 tons of food waste with an average diversion rate of 52 tons of food waste each month.

### **Countywide Organic Waste Management**

Public Works continued to conduct strategic planning for SB 1383 compliance, including analyzing options for the sustainable collection of organic waste and the pursuit of legislation to provide funding for development of organic

waste recycling infrastructure.

Meetings were held with eight stakeholders in Sacramento, including the County's Sacramento Legislative Advocate, to further our pending legislative proposal. The meetings were very successful as all were supportive of our legislative proposal or had their own similar proposal. They also provided additional, helpful information and recommendations for additional stakeholders and potential funding sources to further support our efforts.

### **Mass Debris Management**

#### **Woolsey Fire Recovery**

Public Works managed debris removal and outreach for the Woolsey Fire Recovery efforts. The total number of parcels affected by the fire was 1,570, and 1,373 properties submitted debris removal applications. The remaining properties were either deemed ineligible or non-responsive or were exempt from the debris removal program.

In total, 938 properties submitted applications to participate in the Consolidated Debris removal program operated by CalOES. Of those, 826 parcels required debris removal and were cleared by the State. In addition, 435 properties submitted applications to participate in the Local Program to conduct their own debris removal, and 365 of those parcels were cleared by the property owners. Meetings to discuss compliance will be scheduled with the remaining 70 parcel owners. A total of 1,189 parcels are now eligible for rebuilding.

The Consolidated Debris removal program concluded on July 31, 2019. Public Works stopped accepting applications to participate in the Local Program on October 15, 2019.

## **Priority: Reduce carbon fuel generated by Public Works Fleet**

### **Clean fuel fleet**

1. Three (3) CNG-powered vehicles were added to the Public Works fleet reducing carbon dioxide (CO2) emissions.
2. Three (3) zero-emissions electric vehicles are expected by the end of this quarter.
3. Public Works' use of alternative fuel vehicles has reduced CO2 emissions by 211.3 tons.

### **Southern California Edison's Charge Ready Program**

Public Works is working with Southern California Edison to finalize the design concept to install 46 workplace charging stations through Edison's Charge Ready Program. A work schedule is also being developed to ensure the timely completion of the project. The work is anticipated to begin in June 2020.

## **Priority: Develop a sustainable sewer system infrastructure**

### **Address problematic sewerage in identified communities**

1. The proposed Balfour pump station pilot project is still being refined to address the drainage, sewerage and road deficiencies.

### **Malibu Mesa Water Reclamation Plant Refurbishment Project**

1. After obtaining Pepperdine University's agreement to partner in the refurbishment project for the Malibu Mesa Water Reclamation Plant, Public Works obtained the Board of Supervisors' approval to incur the costs to begin the engineering work associated with the project. These costs will be reimbursed by the future County Improvement District for the project through the proceeds of bonds issued by the County.







# Public Buildings

*"We design and deliver high performing buildings and facilities for people and programs to thrive."*



Campus Kilpatrick

### In 2018-19:

- Completed **29** new or renovated County buildings valued at **nearly \$178 million**

## MAJOR PROGRAMS/SERVICES

### Programs

Public Works' Public Buildings Core Service Area strives to be the Builder of Choice by providing project management services for Public Works and other agency's infrastructure projects and the County's Capital Projects. This includes the renovation of existing building facilities and infrastructure, and the master planning, programming and construction of new building facilities for many County departments including Animal Care and Control, Beaches and Harbors, Fire, Health Services, Mental Health, Parks and Recreation, Child Support Services, District Attorney, Probation, Public Health, Public Libraries, and Sheriff.

Currently, Public Works manages approximately 370 active projects with a total project value of over \$2.4 billion.

Public Works utilizes a variety of methods to deliver projects, including design-build, job order contracts, traditional design-bid-build, best value, and developer project delivery. Public Works works in conjunction with the Board of Supervisors office, Chief Executive Office, and the client departments to define project parameters, and to select the project delivery method that best enables the County to meet the established project goals and objectives.

County Capital Project budgets also includes the allocation of one percent of the design and construction cost for each project to the Civic Arts Program for the integration of high-quality civic art into the County's capital building projects per the County's Civic Art Policy adopted by the Board of Supervisors in 2008, aimed at improving the physical and cultural environment and the quality of life of County residents.





## The County's Homeless Initiative

The Homeless Initiative is designed to generate a coordinated set of County Strategies to reduce homelessness through an intensive, inclusive planning process in six areas: prevention of homelessness, subsidized housing, increased income, case management and support services, creation of a coordinated system, and an increase in affordable housing.

As part of the Homeless Initiative strategies, the Board awarded design-build contracts for the construction of three Restorative Care Village project sites at LAC+USC Medical Center in Los Angeles, Rancho Los Amigos National Rehabilitation Center in Downey, and Olive View Medical Center in Sylmar. Each site includes a Recuperative Care Center (RCC) and Residential Treatment Programs (RTP) facility. The collective RCCs and RTPs will create 418 beds of transitional housing to assist patients with medical, mental health, and substance dependency conditions. Public Works, in collaboration with our Health Agency partners, is underway with development of all three campuses to ensure their opening by end of 2021.

Relative to the Los Angeles County Shelter Crisis Declaration, Public Works in association with the Board of Supervisors and CEO is also embarking on fast tract projects to create new homeless shelters throughout the County. One current example is the 2817 South Hope Street Interim Housing Project, which in association between the County and City, will provide 100 new beds in the community.

### Public Buildings:

- Manages about **370 active projects with a total project value of over \$2.4 billion**
- Designs and delivers high-performing, resilient County infrastructure

## KEY ISSUES/CHALLENGES

- **Project Management Excellence**
  - Continually striving for project management excellence is crucial for consistently delivering strong business results which:
    - Lowers cost
    - Increases efficiencies
    - Improves customer and stakeholder satisfaction
    - Fosters a competitive edge
- **Customer Expectations**
  - Understanding and meeting customer expectations enables Public Works to provide complete solutions to local needs.
- **Lead the Industry**
  - Continuing to set high standards for service delivery and producing superior results will position Public Works as an industry leader.
  - A trusted network of resources for information sharing and problem-solving:
    - Promotes efficiencies
    - Develops innovative solutions
    - Optimizes resources

## KEY PRIORITIES

- **Project Delivery**
  - Ensure Public Works infrastructure delivery model is modern and efficient.
- **Project Management Results**
  - Deliver projects to clients within project budget.
- **Process Improvements**
  - Promote transparency and improve business performance through process improvements.
- **Community Awareness**
  - Develop and install methods to capture and address community needs in all projects.
- **Industry Relations**
  - Build industry relations by facilitating collaborative problem solving.
  - Provide high-quality, industry leading service results.

## KEY PRIORITY STATUS (SECOND QUARTER: OCTOBER – DECEMBER 2019)

### Priority: Project Delivery

1. Public Works initiated a peer review of the proposed new project delivery approach and its recommended organizational structure to validate that it creates an efficient project delivery for infrastructure projects. Concurrently, Public Works is developing the needed processes and procedures to streamline its implementation.

### Priority: Project Management Results

1. Public Works developed standardized performance metrics to measure the success rate across capital and infrastructure projects, proactively manage projects, and deliver customer expectations.
2. From July to December 2019, Public Works completed 10 capital projects. All completed projects were delivered within established budgets.

### Priority: Process Improvements

1. Public Works maintained a 100 percent success rate in processing invoices timely, ensuring vendors, including small businesses, were paid on time.

### Priority: Community Awareness

1. To strengthen community awareness, Public Works developed a check list that ensures community input is solicited and included throughout the project development process. Additionally, process improvements are being explored to track the success of addressing public concerns.

### Priority: Industry Relations

1. Public Works, as the organizer of the regional construction forum, ensured purpose, goals, and organizational structure of the regional construction forum was formalized. Public Works is developing operational structure such as by-laws to be considered by the forum in the third quarter.



# Development Services

*"We help people build their dreams and ensure safe and healthy homes and communities."*





**3,500** Subdivision improvement plans reviewed

**16,000** building permits valued at \$1.6 billion issued annually



## MAJOR PROGRAMS/SERVICES

Public Works' Development Services Core Service Area provides land development and permitting services and code enforcement programs and services throughout the County.

### Land Development

Public Works, in partnership with the Department of Regional Planning, is providing streamlined land development services on California Environmental Quality Act document reviews, entitlements, permitting, and inspection services and streamlined permit approvals for customers. This is made possible with the newly deployed online enterprise plan checking system. About 3,500 subdivision-related plan reviews are performed and 180 new subdivision maps are recorded each year. In addition, Public Works provides land development and County Surveyor services for 62 cities through contract city services.

### Permits and Inspection

Public Works is also responsible for the enforcement of building regulations for public and private buildings and operates out of ten regional permit offices providing building permits and inspection services. An average of 16,200 building permits with a valuation of about \$1.6 billion are issued annually and made available online via Public Works' interactive "Building Permit Viewer" website. In addition to online permit services, Public Works provides building official services for 14 cities through contract city services.

Public Works also provides permit and inspection services for general construction, transportation, and filming activities within unincorporated County public rights of way and miscellaneous activities affecting Los Angeles County Flood Control District (LACFCD) facilities. Public Works also provides permit and inspection services for activities in city public rights-of-way for several contract cities. About 24,000 permits are processed annually.

Public Works also provides confined space underground inspection services for new LACFCD facilities.

### **Code Enforcement and Property Rehabilitation Program**

Public Works performs code enforcement activities related to property maintenance to improve public safety and quality of life in unincorporated communities. The program is operated on a complaint basis to investigate and resolve public nuisance, unsightly property conditions or unpermitted construction issues within a community. Each year, Public Works processes about 2,200 code enforcement cases, 1,300 property rehabilitation cases, and 700 Nuisance Abatement Team (NAT) cases. The NAT cases typically include County regulation violations enforced by the Departments of Regional Planning, Health Services, Fire, and Animal Control and require the assistance of multiagency Task Force, including the County law enforcement and District Attorney's Office for enforcement actions.

In addition, Public Works performs code enforcement activities related to public rights-of-way, on a complaint basis, to investigate and resolve unpermitted encroachments. Public Works also investigates illicit/undocumented connections to flood control district facilitates for resolution and proper documentation.

### **Graffiti Abatement**

Public Works administers the County's Graffiti Abatement Program, which is tasked with the removal of graffiti in the unincorporated areas of the County and flood control district channels. The Program also includes an education and outreach component to deter youth from engaging in graffiti vandalism and to encourage communities to report graffiti. The sooner it is reported, the sooner it comes down. Public Works removes approximately 8.5 million square feet of graffiti per year.

### **KEY ISSUES/CHALLENGES**

- Expanding local economy and demand for building stock in the housing and business sectors.
- Stakeholder demand for multipurpose use of public infrastructure and the creation of public places/spaces within the community
- Modernizing the County General Plan to meet the needs and demands of multiple stakeholder groups, communities, and business interests.
- Public demand for transparent local e-Government services to keep pace with those available in the private sector commercial market place.
- Community blight and aging housing stock in older neighborhoods.

## KEY PRIORITIES

- **Homelessness and Housing**
  - Streamline the entitlement approval and permitting process.
  - Develop strategies to increase transitional shelters and long-term affordable housing.
- **Sustainable Communities**
  - Develop strategies and policies that address environmental protection, economic vitality, and social justice of the communities we serve.
  - Expand knowledge of latest technologies and developments.
- **Climate Adaption**
  - Develop strategies and policies to increase resiliency in our existing and proposed buildings and infrastructure in response to climate change.
  - Implement efficient, low carbon footprint development practices.
- **Community Awareness**
  - Increase our outreach to address specific community needs and issues.
  - Improve Development Services' website to provide online access to permit and plan documents, "how to" guides, and basic plan and permit information.



## KEY PRIORITY STATUS (SECOND QUARTER: OCTOBER – DECEMBER 2019)

### Priority: Homelessness and Housing

1. Public Works continues to provide expedited services for projects that have an affordable housing component or that in other ways provide affordable housing stock such as Accessory Dwelling Units (ADU) for people experiencing homelessness.

### Priority: Sustainable Communities

1. Public Works continues working on a more sustainable development model through new or updated ordinances that will require developers to design using sustainable techniques and materials resulting in sustainable developments.
  - Updated Sewer Plans and Sewer Area Study pages on our website.
2. Public Works continues to remove 100 percent of reported graffiti within 48 hours in the unincorporated County and 72 hours in the flood control district channels. This high level of service helped reduce blight in our communities. Approximately 1.7 million square feet of graffiti was removed this quarter. (October – December 2019)
3. Public Works continues to remove trash, junk, debris, inoperable vehicles, and overgrowth from private properties through Property Rehabilitation/Code Enforcement program. The program promotes community safety and community enhancement and helps to protect property values, preserve residential neighborhoods and the overall image of the County.

### Priority: Climate Adaptation

1. Public Works is coordinating with the City of Los Angeles, Santa Monica, and other members of the Building Decarbonization Coalition to develop building energy and emissions performance standards that put the county on a path towards building decarbonization.
2. Public Works continues to streamline the permitting and construction of zero-emission vehicle infrastructure.
3. Public Works continues to streamline the permitting and construction of photovoltaic solar system by plan checking 10kW or smaller systems within 1-3 days.

### Priority: Community Awareness

1. Public Works continues to develop the Development Services' website to improve online access to plan and permit information.



# Emergency Management

*"We maintain a highly trained and equipped workforce to respond to and recover from daily incidents, local emergencies, and major disasters."*



**50,000** annual calls for service → **24 Hour** Dispatch Center



## MAJOR PROGRAMS/SERVICES

Public Works is responsible for a wide variety of critical infrastructure and services which directly support the people and economy of Los Angeles County. We must be prepared to respond to and mitigate disruptions due to any hazards including natural disasters, technology failures, violence, or epidemics. This mission requires a great deal of teamwork and communication to ensure a high state of readiness, efficient response, and strong resilience for Public Works and the communities we serve.

### Emergency Management

Public Works assists the Office of Emergency Management with Countywide emergency planning and preparedness activities, is a member of the County Emergency Management Council, and also serves as lead of the Construction and Engineering Branch of the County Emergency Operations Center (CEOC). Public Works also operates and maintains a Department Operations Center (DOC) to manage local emergency response and to support County emergency operations during major emergencies and disasters. The Public Works DOC was extensively activated in 2018 for the Woolsey Fire and subsequent storm season. The Public Works DOC was activated in October 2019 during the Tick Fire incident.

### Public Works Dispatch Center

Public Works operates a 24-hours-a-day Dispatch Center and hotline (1-800-675-HELP) and coordinates more than 50,000 service and emergency calls annually, including reports of graffiti, potholes, hazmat spills, water service disruption, illegal dumping, sewer overflows, damaged signs, and malfunctioning signals. The Dispatch Center also coordinates closely with Public Works field crews, law enforcement, and other safety responders. Road closures for County-maintained roads are posted to a website at: <https://pw.lacounty.gov/rmd/roadclosures> and traffic signal incidents are posted at <http://pw.lacounty.gov/OSD/TrafficSignalIncidents/>

## County Building Evaluation Team (CBET)

Public Works is tasked with evaluating the structural integrity of all County buildings. In partnership with the Chief Executive Office and Internal Services Department, a comprehensive emergency response plan has been developed that includes processes on the prioritization and evaluation of County buildings. Training has been conducted to ensure staff are familiar with the County Building Evaluation Team Plan. Following the partial activation of the CBET function, the Chief Executive Office conducted several reviews of the program to ensure its readiness for future disasters.

## Continuity of Operations Plan (COOP)

The COOP identifies the essential functions and processes that must be continued or resumed rapidly after a disruption. Public Works analyzed over 150 processes and prioritized their value to protect life and safety, property, and the environment. The COOP identifies the resources needed to restore these essential processes and ensure that the fundamental responsibilities of Public Works will be executed, during response to an emergency or disaster.

## Woolsey Fire Recovery Effort

From November 8 through 21, 2018, the Woolsey Fire burned 96,949 acres of land in unincorporated County areas of the Santa Monica Mountains and in the Cities of Agoura Hills, Calabasas, Hidden Hills, Los Angeles, Malibu, and Westlake Village. Widespread damage occurred to private structures, public infrastructure, and watersheds. The Woolsey Fire damaged or destroyed over 1,000 structures in cities and unincorporated areas of Los Angeles County. Public Works was the lead in the Recovery Operations Section of the County's Recovery Coordinating Center and was integral in the response and recovery to the Woolsey Fire. Activities included damage assessments, debris removal, community engagement, and restoring essential infrastructure. Two bridges destroyed by the fire were recently rebuilt. An ongoing County audit of the response efforts are indicating that Public Works overall and its Emergency Management team performed exceptionally well and effectively adhered to County protocols and requirements of the National Incident Management System and State Emergency Management System. The emergency management consultant performing the study has indicated that in many areas Public Works is the model for other public works agencies to follow. Following the Woolsey Fire and for the 2018-19 storm season, Public Works, Fire, and Sheriff's Departments formed Unified Command structures and coordinated closely to respond to storm events in the Woolsey Fire and Creek Fire burn areas. Public Works continues to implement projects to restore infrastructure and a system has been established to assist residents with streamlined processes for the rebuilding effort. As of this date, 32 building permits have been issued for the rebuilding of residential homes in County areas. For the 2019-20 storm season, Public Works, Fire, and Sheriff's Departments made desired adjustments to the developed Unified Command structures to best respond to storm events in the Woolsey Fire and Creek Fire burn areas.

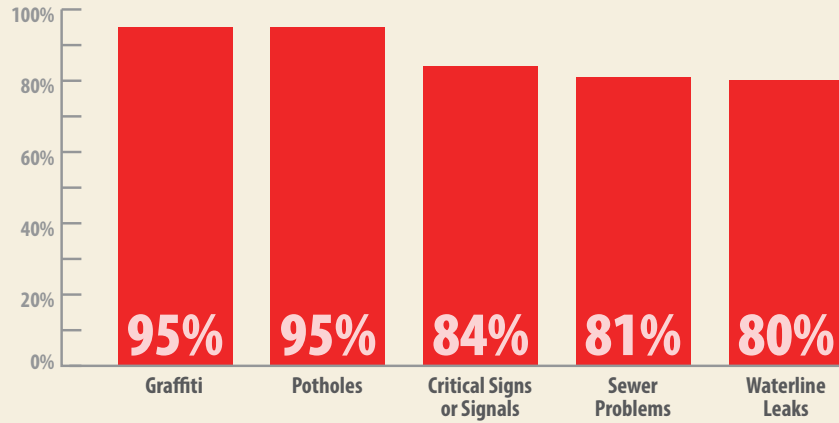
## Financial Impact of Recent Disaster Events:

2004–05 Winter Rainstorms	\$111.2 M
2007 Wildfires	\$3.3 M
2008 Wildfires	\$0.5 M
2009 Station Fire	\$13.5 M
2010 Winter Rainstorms	\$51 M
2011 Wind Storms-San Gabriel Valley	\$5.4 M
2013 Powerhouse Fire	\$2.2 M
2014 Bouquet Canyon Road	\$2.7 M
2014 Winter Rainstorms	\$4.8 M
July 2015 Storm	\$5.6 M (Monthly)
2015 Winter Rainstorms	\$8.7 M
2016 Sand Fire (initial estimates)	\$14.5M
2017 Jan/Feb Storms	\$38.1M
2017 Creek Fire	\$1.6M
2018 Winter Storms	\$2.0M
2018 Woolsey Fire	\$38.5M
2019 Wildfires (Tick, Getty, & Saddle Ridge)	TBD



## Dispatch Services

Completion rate, not adjusted to account for weather conditions within adopted time standard



## KEY ISSUES/CHALLENGES

- To increase workforce awareness of the operational authority and resources to empower and enable efficient emergency response and recovery enterprise-wide.
- To increase and promote individual and community awareness of available Public Works resources and services for emergency management.
- To develop and strengthen strategic relationships and opportunities for collaboration to improve situational awareness, response efficiency, and recovery and preparedness in the region.
- To prepare for emerging environmental, social, health, and technology issues which present new challenges in emergency management.

## KEY PRIORITIES

- **Workforce Awareness**
  - Define and communicate scope of authority and roles and responsibilities.
  - Develop knowledge, skills, and abilities in response and recovery.
- **Community Awareness**
  - Educate and inform the community.
  - Expand knowledge of communities and their needs.
  - Ensure that response and recovery efforts address the safety and needs of people experiencing homelessness.
- **Strategic Relationships**
  - Strengthen collaborative partnerships with external agencies.
- **Emerging Issues**
  - Research and broaden knowledge base.
  - Plan and prepare for potential challenges of emerging threats and hazards.

## KEY PRIORITY STATUS (SECOND QUARTER: OCTOBER – DECEMBER 2019)

### Priority: Workforce Awareness

1. Public Works continues to expand its goal of trained and certified Engineers, Architects and Building Inspectors in the Safety Assessment Program (SAP). There are currently about 240 SAP certified personnel at Public Works.
2. Public Works continues to participate in Federal Emergency Management Agency (FEMA) and California Governor's Office of Emergency Services Training.
3. Public Works updated the Department Emergency Plan, which outlines protocols to prepare employees to respond to a variety of incidents and workplace emergencies.
4. Public Works is pursuing significant improvements for the Department Operations Center (DOC). The improvements will include facility upgrades, improved power and communications reliability, a new video wall and additional audiovisual technology to allow for a stronger connectivity from the field to the DOC and further support services to the public.
5. Public Works completed a Continuity of Operations Plan (COOP). The COOP identifies the essential functions and processes that must be continued or resumed rapidly after a disruption. The planning effort is continuing, as further details and interdependencies are being analyzed and incorporated into the plan. COOP trainings and exercises are also being planned.
6. Public Works conducted an employee preparedness event at headquarters in October 2019 and conducted exercises during the Great California Shakeout.
7. Public Works is undertaking substantive changes to emergency processes that were largely uncovered by the development and adoption of the After Action Review of the Woolsey Fire Incident.

### Priority: Community Awareness

1. Public Works developed an interactive web map for the debris flow hazards in post-fire areas. The tool has been extremely useful for first responders to plan storm response and potential evacuations, and a public version has allowed residents to personally assess hazards for their location.
2. Public Works continues its efforts in partnering with the Kagel Canyon community, which was greatly impacted by the 2017 Creek Fire, to assist in their preparedness and recovery process. Multi-Agency meetings are ongoing to assist and lead the community in their development of a disaster survival guide.
3. Public Works continues to participate in community emergency preparedness events throughout the County to directly communicate and share information with the public. Public Works participated in ten official events during this quarter.
4. Public Works, the City of Malibu, and other agencies and stakeholders have partnered to improve upon community readiness in the City of Malibu and Santa Monica Mountains region. A focus of the workgroup is to improve upon evacuation processes.

### Priority: Strategic Relationships

1. Public Works, Fire, and Sherriff's Departments have formed a Unified Command and coordinated closely to respond to storm events in the Woolsey Fire and Creek Fire burn areas. The Unified Command was not activated during this quarter but remained engaged and prepared for upcoming events.
2. Public Works Agency Representatives were engaged at the Command Posts for Saddleridge, Tick, and Getty Fires.

3. Public Works continues to partner with several County departments and other stakeholders to streamline processes pertaining to sewage overflows.
4. Public Works continues to be active on the Emergency Management Council (EMC). The EMC Subcommittee meets bi-monthly to discuss emergency management subjects relevant to the Operational Area, including policies, plans, training and exercise opportunities.
5. Public Works participated in emergency coordination meetings for dam safety hazards with US Army Corps, California Department of Water Resources, Sheriff, Fire, and other partner agencies. Public Works participated with the US Army Corps in a table top exercise for Hansen Dam in October 2019.
6. Public Works engineers continue to participate as members of the Los Angeles County Fire Department California Task Force 2 Urban Search and Rescue (USAR) Team. During this quarter, work is also underway to add at least two additional Public Works employees to the USAR team as structure specialists. On November 30, 2019, Public Works deployed one engineer to Albania in response to the devastating earthquake to assess damages to bridges, homes, and critical infrastructure.
7. Public Works is partnered with the Chief Executive Office and other stakeholders on developing substantial revisions to the County Code governing emergency management processes.

### **Priority: Emerging Issues**

1. Public Works continues to attend trainings, workshops and conferences to broaden the knowledge base and plan for potential challenges of emerging issues. During this quarter, Public Works attended the California Emergency Services Association conference to share ideas and experiences with other agencies. Additional training was conducted to more effectively include people experiencing homelessness in emergency planning.
2. Public Works continues to perform research and identify best practices.
3. Public Works performed research and analyzed facilities for potential shelter locations for people experiencing homelessness.
4. Public Works is coordinating with communities and response agencies to improve evacuation planning and communications in the Santa Monica Mountains.
5. Public Works continues to implement new GIS applications and web maps to improve readiness, track status, and interactively assess hazard information.
6. Public Works is expanding the equating of major planned projects as incidents. This provides a benefit of defining an Incident Command Structure and creating Incident Action Plans and other contingency plans.
7. Public Works has proactively expedited increasing workforce awareness and readiness of growing workplace concerns including active shooter scenarios.



# **Appendix 1**

## Organization Chart









# **Appendix 2**

## Business Outreach





## AT A GLANCE

Population:

**10.15M\***

(Los Angeles County)



Unemployment Rate:

**4%**

(Los Angeles County – 2018)

(United States: 4% – 2018)

over

**\$770M\*\***

(All Districts)

Contracts Awarded

FY 18-19

**9,563\*\***

Jobs created

FY 2018-19

nearly **\$111M**

in products and services from local vendors and small businesses

(All Districts)

\*Source: Los Angeles Economic Development Corporation Institute for Applied Economics, 2017 Los Angeles County Economic Development Corporation

\*\* This info includes nondistrict specific data for contracts and jobs created

## Business Outreach

Public Works' Business Outreach team focuses on supporting the County's community economic development through business-friendly contracting, procurement for products and services, opportunities for design, construction, maintenance, and operations of public infrastructure and capital projects.

### Community benefits supported:

- Regional economic growth and workforce development
- Local business opportunities

### Key issues to be addressed:

- Regional economic growth and development requiring support for small businesses and social enterprises
- Contracting best practices and risk management
- Need for the construction contracting community to stay current with emerging trends, innovative technologies for modern infrastructure, and new contracting requirements for bidding

### Key priorities:

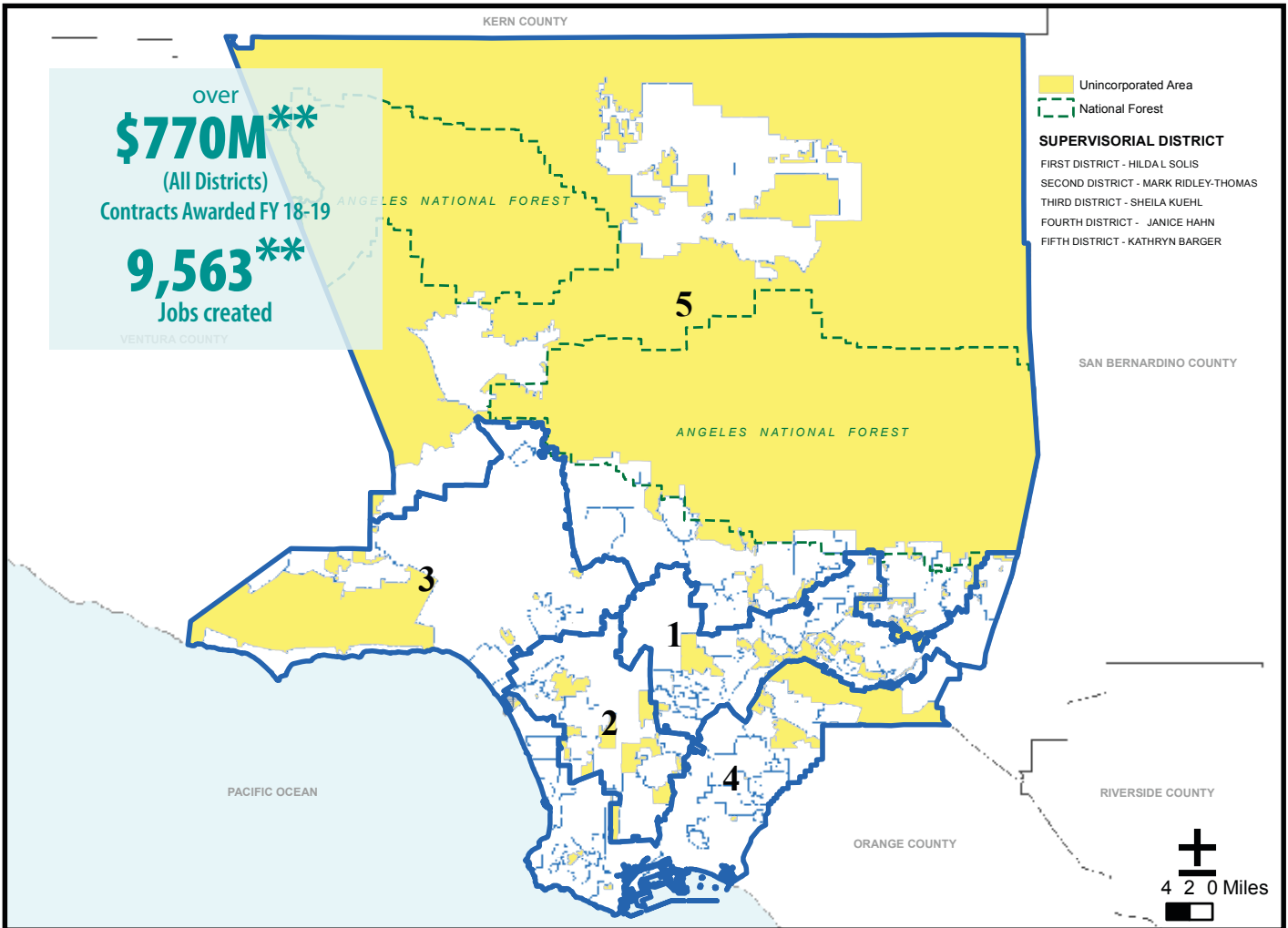
- Advance the Board's objectives of expanding business opportunities for Small and Medium-Size enterprises
- Support local workforce and job creation
- Strengthen controls to ensure compliance with contracting laws and regulations

### Key efforts:

- Implement a robust business outreach program in collaboration with ISD and DCBA resulting in meeting and exceeding the Board's goal of 25% Local Small Business Enterprise utilization for two consecutive years
- Implement the Board's Local & Targeted Worker Hire Policy and guidelines for capital construction projects
- Establish strategic partnerships with professional organizations, industry coalitions, business community, and chambers of commerce
- Partner with DCBA to explore opportunities for Medium-Size Business Enterprise Programs
- Fully implemented all 33 Job Order Contract audit requirements



# Local Economy



Document Path: \\lpw\gis\file\GIS Services\MPM\GIS\projects\DPW SUSTAINABILITY\SD\ALL SD.mxd

# **Appendix 3**

## Administrative Services





## AT A GLANCE



**15,000**

Purchase Orders Processed  
Annually Totalling

**\$100M**



Awarded for  
Achievement  
in Excellence in  
Financial Reporting for

**10** Consecutive  
Years



Employees Hired in FY 17-18

**427**



Support Workforce of

**4,000**



Average Grant Funding  
Awarded Annually

**\$57M**



**\$1.4M**

invested in  
employee training

## Administrative Services

Administrative Services provides support to Public Works operations and services to Los Angeles County businesses and residents including financial management; human resources; community and government relations, and workforce support to all Core Service Areas within Public Works. Services include fiscal oversight, budget/fund management, internal audit, recruitment, classification, personnel and payroll operations, employee relations, performance management, benefits and return to work, procurement and warehousing, employee training and professional development, compliance oversight for legally mandated programs, employee programs, grants, awards, legislation, strategic communications, and community engagement.

### Community benefits supported:

- Outreach and engagement for various high-profile projects and programs
  - Provide job opportunities for various levels and skill sets.

### Key issues to be addressed:

- Enhance community engagement to keep residents, business owners, and other stakeholders informed of upcoming projects and programs and obtain their valuable input.

### Key priorities:

- Create a culture of outstanding public service by investing in employees, building in-house expertise, strengthening leadership development, creating permanent jobs, investing in tools, training, and technology, and enhancing the work environment.
  - Prepare for the current and future labor market demands by attracting, hiring, and retaining a highly-skilled workforce.
  - Shared responsibility with County departments to increase the number of families earning a living wage in LA County by providing job opportunities to disadvantaged job seekers, including former foster youth, veterans, homeless persons, reentry youth and adults, and dislocated workers.

- Enhanced Community Relations

### Key efforts:

- Support Public Works' efforts to promote deeper employee engagement and a commitment to the highest level of customer service by leading an enterprise-wide workforce reinvestment strategy that will enhance employee recruitment, and retention, provide professional growth, and establish succession plans for all levels of management.





# **Appendix 4**

## Services Provided to Cities

VIA Agreement



# Los Angeles County Public Works Services Provided To Cities (Via Agreement)

## SD1

	Bridge Inspection and/or Maintenance	Building & Safety	Storm Drain Catch Basin Clean Out	Storm Drain Catch Basin Insert Maintenance (County Flood Control Catch Basins)	Street Maintenance	Industrial Waste	Permit Issuance & Inspection (Excluding Transportation)	Permit Issuance & Inspection (Transportation)	Consolidated Sewer Maintenance District	Sewer Maintenance Contract	Street Lighting Maintenance District	Subdivision Maps: Final	Subdivision Maps: Tentative	Traffic Advisor	Traffic Operations Services	Traffic Signal Maintenance	Traffic Signal Maintenance – Shared Intersections	Traffic Monitoring	Underground Storage Tanks	Infrastructure Design Construction
Azusa	■																■		■	■
Baldwin Park	■		■						■								■		■	■
Bell	■										■								■	■
Bell Gardens	■					■			■		■	■							■	■
Claremont	■																		■	■
Commerce	■				■	■		■	■			■	■	■	■		■		■	■
Cudahy	■		■			■			■			■							■	■
El Monte	■		■					■											■	■
Huntington Park	■																■		■	■
Industry	■	■	■		■			■	■		■			■	■	■			■	■
Irwindale	■	■	■			■				■		■					■		■	■
La Puente	■		■		■	■									■		■		■	■
Los Angeles																	■			■
Maywood	■																		■	■
Montebello	■											■			■		■		■	■
Monterey Park	■		■			■					■						■		■	■
Pico Rivera	■					■		■	■			■					■		■	■
Pomona	■																		■	■
Rosemead	■		■	■		■			■								■		■	■
South El Monte									■		■								■	■
South Gate	■							■				■					■		■	■
Vernon	■											■								■
Walnut	■		■		■	■		■	■		■				■	■			■	■
West Covina	■							■				■					■		■	■
<b>TOTAL</b>	<b>22</b>	<b>2</b>	<b>9</b>	<b>1</b>	<b>4</b>	<b>9</b>	<b>0</b>	<b>7</b>	<b>9</b>	<b>1</b>	<b>6</b>	<b>8</b>	<b>1</b>	<b>1</b>	<b>5</b>	<b>2</b>	<b>13</b>	<b>0</b>	<b>22</b>	<b>24</b>

# Los Angeles County Public Works Services Provided To Cities (Via Agreement)

## SD2

	Bridge Inspection and/or Maintenance	Building & Safety	Storm Drain Catch Basin Clean Out	Storm Drain Catch Basin Insert Maintenance (County Flood Control Catch Basins)	Street Maintenance	Industrial Waste	Permit Issuance & Inspection (Excluding Transportation)	Permit Issuance & Inspection (Transportation)	Consolidated Sewer Maintenance District	Sewer Maintenance Contract	Street Lighting Maintenance District	Subdivision Maps: Final	Subdivision Maps: Tentative	Traffic Advisor	Traffic Operations Services	Traffic Signal Maintenance	Traffic Signal Maintenance – Shared Intersections	Traffic Monitoring	Underground Storage Tanks	Infrastructure Design Construction
Carson	■	■				■		■	■		■	■	■		■	■		■	■	■
Compton	■														■		■		■	■
Culver City	■					■						■							■	■
Gardena	■		■			■						■		■			■		■	■
Hawthorne	■											■				■			■	■
Inglewood																	■		■	■
Lawndale		■	■			■		■	■		■	■			■	■			■	■
Los Angeles																	■			■
Lynwood	■							■				■					■		■	■
<b>TOTAL</b>	<b>6</b>	<b>2</b>	<b>1</b>	<b>0</b>	<b>0</b>	<b>4</b>	<b>0</b>	<b>3</b>	<b>2</b>	<b>0</b>	<b>2</b>	<b>6</b>	<b>1</b>	<b>1</b>	<b>3</b>	<b>3</b>	<b>5</b>	<b>1</b>	<b>8</b>	<b>9</b>

# Los Angeles County Public Works Services Provided To Cities (Via Agreement)

## SD3

	Bridge Inspection and/or Maintenance	Building & Safety	Storm Drain Catch Basin Clean Out	Storm Drain Catch Basin Insert Maintenance (County Flood Control Catch Basins)	Street Maintenance	Industrial Waste	Permit Issuance & Inspection (Excluding Transportation)	Permit Issuance & Inspection (Transportation)	Consolidated Sewer Maintenance District	Sewer Maintenance Contract	Street Lighting Maintenance District	Subdivision Maps: Final	Subdivision Maps: Tentative	Traffic Advisor	Traffic Operations Services	Traffic Signal Maintenance	Traffic Signal Maintenance – Shared Intersections	Traffic Signal System Monitoring	Underground Storage Tanks	Infrastructure Design Construction
Agoura Hills	■		■			■			■	■					■	■			■	■
Beverly Hills						■						■					■		■	■
Calabasas	■		■			■			■	■							■		■	■
Hidden Hills			■						■					■			■		■	■
Los Angeles																	■			■
Malibu	■								■		■								■	■
San Fernando	■					■														■
Santa Monica	■											■								■
West Hollywood			■			■				■		■				■			■	■
Westlake Village	■	■	■	■		■			■						■	■			■	■
<b>TOTAL</b>	<b>6</b>	<b>1</b>	<b>5</b>	<b>1</b>	<b>0</b>	<b>6</b>	<b>0</b>	<b>0</b>	<b>5</b>	<b>1</b>	<b>3</b>	<b>2</b>	<b>0</b>	<b>0</b>	<b>3</b>	<b>3</b>	<b>4</b>	<b>0</b>	<b>7</b>	<b>10</b>

# Los Angeles County Public Works Services Provided To Cities (Via Agreement)

## SD4

	Bridge Inspection and/or Maintenance	Building & Safety	Storm Drain Catch Basin Clean Out	Storm Drain Catch Basin Insert Maintenance (County Flood Control Catch Basins)	Street Maintenance	Industrial Waste	Permit Issuance & Inspection (Excluding Transportation)	Permit Issuance & Inspection (Transportation)	Consolidated Sewer Maintenance District	Sewer Maintenance Contract	Street Lighting Maintenance District	Subdivision Maps: Final	Subdivision Maps: Tentative	Traffic Advisor	Traffic Operations Services	Traffic Signal Maintenance	Traffic Signal Maintenance – Shared Intersections	Traffic Monitoring	Underground Storage Tanks	Infrastructure Design Construction
Artesia		■				■			■			■							■	■
Avalon																			■	■
Bellflower	■					■			■										■	■
Cerritos	■	■	■			■		■									■		■	■
Diamond Bar	■		■			■			■		■								■	■
Downey	■																		■	■
El Segundo	■							■				■				■				■
Hawaiian Gardens	■		■			■			■								■		■	■
Hermosa Beach												■					■		■	■
La Habra Heights	■								■										■	■
Lakewood	■	■				■	■	■	■			■	■	■	■	■			■	■
La Mirada	■	■	■			■	■	■	■		■	■	■	■	■	■			■	■
Lomita		■	■			■		■	■		■	■	■	■				■	■	■
Long Beach	■							■									■			■
Los Angeles																	■			■
Manhattan Beach												■				■		■	■	■
Norwalk	■					■													■	■
Palos Verdes Estates	■								■			■							■	■
Paramount	■					■	■	■	■		■								■	■
Rancho Palos Verdes						■			■										■	■
Redondo Beach	■		■									■				■			■	■
Rolling Hills		■							■			■	■						■	■
Rolling Hills Estates		■	■	■	■	■			■		■	■			■				■	■
Santa Fe Springs	■	■	■					■	■			■					■			■
Signal Hill								■				■							■	■
Torrance	■											■					■			■
Whittier	■		■								■						■		■	■
<b>TOTAL</b>	<b>17</b>	<b>8</b>	<b>9</b>	<b>1</b>	<b>1</b>	<b>12</b>	<b>3</b>	<b>9</b>	<b>14</b>	<b>0</b>	<b>6</b>	<b>14</b>	<b>4</b>	<b>3</b>	<b>3</b>	<b>5</b>	<b>8</b>	<b>2</b>	<b>22</b>	<b>27</b>

# Los Angeles County Public Works Services Provided To Cities (Via Agreement)

## SD5

	Bridge Inspection and/or Maintenance	Building and Safety	Storm Drain Catch Basin Clean Out	Storm Drain Catch Basin Insert Maintenance (County Flood Control Catch Basins)	Street Maintenance	Industrial Waste	Permit Issuance & Inspection (Excluding Transportation)	Permit Issuance & Inspection (Transportation)	Consolidated Sewer Maintenance District	Sewer Maintenance Contract	Street Lighting Maintenance District	Subdivision Maps: Final	Subdivision Maps: Tentative	Traffic Advisor	Traffic Operations Services	Traffic Signal Maintenance	Traffic Signal Maintenance – Shared Intersections	Traffic Monitoring	Underground Storage Tanks	Infrastructure Design Construction	
Alhambra	■																		■	■	
Arcadia	■		■									■					■			■	■
Bradbury	■		■	■					■						■					■	■
Burbank	■											■									■
Covina	■		■									■			■		■	■	■	■	■
Duarte			■	■		■			■									■	■	■	■
Glendale	■		■									■					■				■
Glendora	■		■						■			■					■			■	■
La Cañada Flintridge	■	■	■	■	■	■			■		■				■	■				■	■
Lancaster	■							■				■			■					■	■
La Verne	■		■			■														■	■
Los Angeles																	■				■
Monrovia	■		■														■	■	■	■	■
Palmdale	■							■							■					■	■
Pasadena	■		■									■					■				■
San Dimas	■		■			■		■	■			■					■			■	■
San Gabriel	■		■									■					■	■	■	■	■
San Marino	■		■									■					■			■	■
Santa Clarita	■					■			■							■				■	■
Sierra Madre	■											■								■	■
South Pasadena	■		■	■								■								■	■
Temple City	■		■		■	■			■							■				■	■
<b>TOTAL</b>	<b>20</b>	<b>1</b>	<b>15</b>	<b>4</b>	<b>2</b>	<b>6</b>	<b>0</b>	<b>3</b>	<b>7</b>	<b>0</b>	<b>1</b>	<b>12</b>	<b>0</b>	<b>0</b>	<b>5</b>	<b>3</b>	<b>10</b>	<b>4</b>	<b>18</b>	<b>22</b>	





# **Appendix 5**

## Public Works' Priority Legislation



# Public Works' Priority Legislation

2019-20 Legislative Session

Bill and Author	Issue Area	Status	County Position
<b><i>Environmental Services</i></b>			
AB 729 (Chu, D-Hayward)	Carpet Recycling: Carpet Stewardship	Signed by the Governor on 10/9/19	No Position
AB 1080 (Gonzalez, D-San Diego)	Solid Waste: Packaging and Products	2-year bill	Support
AB 1672 (Bloom, D-Santa Monica)	Solid Waste: Flushable Products	2-year bill	Pending
SB 54 (Allen, D-Santa Monica)	Solid Waste: Packaging and Products	2-year bill	Support
SB 409 (Wilk, D-Santa Clarita)	Illegal Dumping	2-year bill	Support
<b><i>Water Resources</i></b>			
AB 134 (Bloom, D-Santa Monica)	Safe Drinking Water Restoration	2-year bill	Support
AB 402 (Quirk, D-Hayward)	State Water Board: Local Primacy Delegation: Funding Stabilization Plan	2-year bill	Pending
AB 1093 (B. Rubio, D-Baldwin Park)	Municipal Separate Storm Sewer Systems: Financial Capability Assessment	Vetoed by the Governor on 9/27/19	No Position
<b><i>Transportation</i></b>			
AB 516 (Chiu, D-San Francisco)	Authority to Remove Vehicles	2-year bill	No Position
AB 1112 (Friedman, D-Glendale)	Shared Mobility Devices: Local Regulation	2-year bill	No Position
AB 1286 (Muratsuchi, D-Torrance)	Shared Mobility Devices: Agreements	2-year bill	No Position

Bill and Author	Issue Area	Status	County Position
<b><i>PW At-Large</i></b>			
AB 1568 (McCarty, D-Sacramento)	Housing Compliance: Prohibition on Applying for State Grants	2-year bill	Oppose
SB 128 (Beall, D-San Jose)	Public Contracts: Best Value Construction Contracting for Counties Pilot Project	Signed by the Governor on 10/3/19	No Position
SB 405 (Archuleta, D-Pico Rivera)	Reclaimed Asphalt Pavement: Pilot Project: County of Los Angeles	2-year bill	Support and Amend
SB 780 (SEN Gov & Finance Comm)	Omnibus Act of 2019: Increased Delegated Authority for Design & Construction Contracts	Signed by the Governor on 9/20/19	Support
HR 1708 (Schiff, D-Burbank)	Rim of the Valley Corridor Preservation Act	House Natural Resources Comm.	Support
HR 2215 (Chu, D-Pasadena)	San Gabriel Mountains Foothills and Rivers Protection Act	House Natural Resources Comm.	Support
HR 4101 (Bass, D-Los Angeles)	Build Local, Hire Local Act	House Transportation & Infrastructure Comm.	Pending
S 1109 (Harris, D-CA)	San Gabriel Mountains Foothills and Rivers Protection Act	Senate Energy and Natural Resources Comm.	Support
S 2404 (Gillibrand, D-NY)	Build Local, Hire Local Act	Senate Environment & Public Works Comm.	Pending
Pending	Federal Infrastructure Plan (2019)	Pending	Pending

# **Appendix 6**

## Public Works Field Facilities



# Public Works Field Facilities in SD1

FUNCTION	FACILITY	ADDRESS	PHONE
Aviation	San Gabriel Valley Airport	4233 N. Santa Anita Avenue El Monte, CA 91731	(626) 448-6129
Building & Safety	Commerce	2535 Commerce Way Commerce, CA 90040	(323) 887-4455
	East Los Angeles	4801 East 3rd Street Los Angeles, CA 90022	(323) 881-7030
	Industry / La Puente	16005 E. Central Avenue La Puente, CA 91744	(626) 961-9611
	Irwindale	5050 N. Irwindale Avenue Irwindale, CA 91707	(626) 430-2205
Construction	Baldwin Park Yard	14747 E. Ramona Blvd. Baldwin Park, CA 91706	(626) 962-0548
	Imperial Yard	5525 E. Imperial Hwy. South Gate, CA 90280	(562) 904-6157
	Longden Yard	160 E. Longden Avenue Irwindale, CA 91706	(626) 447-5362
Environmental Programs	City of Commerce	2535 Commerce Way Commerce, CA 90040	(323) 887-4456
	East Los Angeles	4801 East 3rd Street Los Angeles, CA 90022	(323) 881-7031
	La Puente	16005 E. Central Avenue La Puente, CA 91744	(626) 961-9611
Fleet Management	Baldwin Park Shop (MD 1)	14747 E. Ramona Blvd. Baldwin Park, CA 91706	(626) 814-1321
	Central Yard Shop	2275 Alcazar Street Los Angeles, CA 90033	(626) 458-1711
Stormwater Maintenance	Imperial Yard - South	5525 E. Imperial Hwy. South Gate, CA 90280	(562) 861-0316
	Longden Yard - East	160 E. Longden Avenue Irwindale, CA 91706	(626) 445-7630

FUNCTION	FACILITY	ADDRESS	PHONE
	Rio Hondo Spreading Grounds	353 S Van Norman Road Montebello, CA 90640	(562) 948-1171
	Thompson Creek Dam	4100 Cobal Canyon Road Claremont, CA 91711	(909) 624-2438
Geotechnical & Materials Engineering	Alcazar Materials Laboratory	1537 Alcazar Street Los Angeles, CA 90033	(626) 458-1719
Land Development	Baldwin Park - Permit Office #1	14747 E. Ramona Blvd. Baldwin Park, CA 91706	(626) 338-9515
Operational Services	Alcazar Yard - Facilities Management Sec.	2275 Alcazar Street Los Angeles, CA 90033	(626) 458-1762
	Alcazar Yard - Traffic Ops & Electrical	1525 Alcazar Street Los Angeles, CA 90033	(626) 458-1700
	Baldwin Park Traffic Painters/Sign Posters	14514 Central Avenue Baldwin Park, CA 91706	(626) 813-9102
	Imperial Yard - Electricians & Welder	5525 E. Imperial Hwy. South Gate, CA 90280	(562) 923-5213
Road Maintenance	Maintenance District No. 1 (Baldwin Park)	14747 E. Ramona Blvd. Baldwin Park, CA 91706	(626) 337-1277
	Road Division 116/416	14959 E. Proctor Avenue La Puente, CA 91744	(626) 968-3312
	Road Division 117/417/517	19865 E. Walnut Drive Walnut, CA 91789	(626) 964-1518
	Road Division 142	4304 Eugene Street Los Angeles, CA 90022	(323) 261-2160
	Road Division 146/446	9521 E. Beverly Blvd. Pico Rivera, CA 90660	(562) 692-2107
Sewer Maintenance	East Yard	2849 S. Myrtle Avenue Irwindale, CA 91706	(626) 446-5227
Survey	Longden Yard	160 E. Longden Avenue Irwindale, CA 91706	(626) 446-5708



# Public Works Field Facilities in SD2

FUNCTION	FACILITY	ADDRESS	PHONE
Aviation	Compton/Woodley Airport	901 W. Alondra Blvd. Compton, CA 90220	(310) 631-8140
Building & Safety	Carson	701 E. Carson Street Carson, CA 90745	(310) 952-1766
	Lawndale	14717 S. Burin Avenue Lawndale, CA 90260	(310) 970-2100
	Southwest District	1320 W. Imperial Hwy. Los Angeles, CA 90044	(323) 820-6500
Fleet Management	Westchester (MD 3)	5530 W. 83rd Street Los Angeles, CA 90045	(310) 417-5184
	83rd Street Yard – South	5520 W. 83rd Street Los Angeles, CA 90045	(323) 776-7610
	Dominguez Sub-Yard	2159 E. Sepulveda Blvd. Carson, CA 90744	(310) 830-5272
Land Development	Westchester - Permit Office #3	5530 W. 83rd Street Los Angeles, CA 90045	(310) 649-6300
Operational Services	Westchester – Welder	5530 W. 83rd Street Los Angeles, CA 90045	(310) 417-5184
Road Maintenance	Maintenance District No. 3 (Westchester)	5530 W. 83rd Street Los Angeles, CA 90045	(310) 348-6448
	Road Division 141/241/441	2120 E. 90th Street Los Angeles, CA 90002	(323) 582-7848
	Road Division 232A Sub-Yard	4055 W. Marine Ave. Lawndale, CA 90260	(310) 679-2559
	Road Division 233/333/433	5530 W. 83rd Street Los Angeles, CA 90045	(310) 649-5123
Sewer Maintenance	Lawndale Sub-Yard	4055 Marine Avenue Lawndale, CA 90260	(310) 326-3881
	South Yard	1129 E. 59th Street Los Angeles, CA 90001	(323) 233-3330
Waterworks	Lawndale Yard	4055 W. Marine Avenue Lawndale, CA 90260	(310) 679-2559

# Public Works Field Facilities in SD3

FUNCTION	FACILITY	ADDRESS	PHONE
Aviation	Whiteman Airport	12653 Osborne Street Pacoima, CA 91331	(818) 896-5271
Building & Safety	Calabasas/Westlake Village	26600 Agoura Road, Suite 110 Calabasas, CA 91302	(818) 880-4150
	Universal City	100 Universal City Plaza Universal City, CA 91608	(818) 762-6284
Construction	Malibu Office	23533 W. Civic Center Way Malibu, CA 90265	(310) 317-1388
	Saticoy Yard	13444 Saticoy Street North Hollywood, CA 91605	(818) 994-9964
Stormwater Maintenance	Hansen Yard - West	10179 Glenoaks Blvd. Sun Valley, CA 91352	(818) 896-0594
Road Maintenance	Road Division 336	3637 Winter Canyon Road Malibu, CA 90265	(310) 456-8014
	Road Division 339/539	29773 W. Mulholland Hwy. Agoura, CA 91301	(818) 889-0323
Sewer Maintenance	Malibu Mesa Treatment Plant	3863 Malibu Country Road Malibu, CA 90265	(310) 456-1470
	Malibu Treatment Plant	3620 Vista Pacifica Street Malibu, CA 90265	(310) 456-3436
	Trancas Treatment Plant	6338 Paseo Canyon Drive Malibu, CA 90265	(310) 457-9069
Survey	Saticoy Yard	13436 Saticoy St. North Hollywood, CA 91605	(818) 994-9931
Waterworks	South Maintenance Area - Malibu	23533 W. Civic Center Way Malibu, CA 90265	(310) 456-6621
	Topanga Pump Station	3800 S. Topanga Cyn Blvd. Malibu, CA 90265	(310) 456-9661

# Public Works Field Facilities in SD4

FUNCTION	FACILITY	ADDRESS	PHONE
Building & Safety	Cerritos	18125 Bloomfield Avenue Cerritos, CA 90703	(562) 860-0311
	Artesia	18747 Clarkdale Avenue Artesia, CA 90701	(562) 856-6263
	Lomita/Rolling Hills/ Rolling Hills Estate	24320 S. Narbonne Avenue Lomita, CA 90717	(310) 534-3760
	La Mirada	13700 S. La Mirada Blvd. La Mirada, CA 90638	(562) 943-0131
	South Whittier	13523 Telegraph Road Whittier, CA 90605	(562) 946-1390
	Santa Fe Springs	11710 Telegraph Road Santa Fe Springs, CA 90607	(562) 868-0511
	Lakewood	5050 Clark Avenue Lakewood, CA 90712	(562) 866-9771
Environmental Programs	Whittier Area	13523 Telegraph Road Whittier, CA 90605	(562) 906-8426
	Lomita Area	24320 S. Narbonne Avenue Lomita, CA 90717	(310) 534-4862
Fleet Management	Hollydale Shop (MD 4)	11282 S. Garfield Avenue Downey, CA 90242	(562) 869-1178
Stormwater Maintenance	Stimson Shed	1520 Stimson Avenue Hacienda Heights, CA 91745	(626) 333-3233
	Diamond Bar Shed	2201 Diamond Bar Blvd. Pomona, CA 91765	(909) 595-5711
	Alamitos Yard - South	881 Iroquois Avenue Long Beach, CA 90815	(562) 598-1229
	Redondo Beach Yard - South	615 Anita Street Redondo Beach, CA 90278	(310) 379-2911
	El Segundo Yard - South	2155 El Segundo Blvd. El Segundo, CA 90245	(310) 322-1377
Land Development	Hollydale - Permit Office #4	11282 S. Garfield Avenue Downey, CA 90242	(562) 861-3580

FUNCTION	FACILITY	ADDRESS	PHONE
Road Maintenance	Road Division 232/432	24309 Walnut Street Lomita, CA 90717	(310) 326-3881
	Road Division 446A	13671 Telegraph Road Whittier, CA 90605	(562) 692-2107
	Maintenance District No. 4 (Hollydale)	11282 S. Garfield Avenue Downey, CA 90242	(562) 869-1176
Sewer Maintenance	Central Yard	12015 Shoemaker Avenue Santa Fe Springs, CA 90670	(562) 941-7011
Survey	Hollydale Yard	11282 S. Garfield Avenue Downey, CA 90242	(562) 869-2217
Stormwater Engineering	Alamitos Yard	881 Iroquois Avenue Long Beach, CA 90815	(562) 596-8196

# Public Works Field Facilities in SD5

<b>FUNCTION</b>	<b>FACILITY</b>	<b>ADDRESS</b>	<b>PHONE</b>
Aviation	Brackett Field Airport	1615 McKinley Ave. La Verne, CA 91750	(909) 593-1395
	Gen William J. Fox Airfield	4555 W. Avenue G Lancaster, CA 93536	(661) 940-1709
Building & Safety	Antelope Valley	335 E. Avenue K-6 #A Lancaster, CA 93535	(661) 524-2390
	Duarte	1600 Huntington Dr. Duarte, CA 91010	(626) 357-7931
	La Canada Flintridge	1327 Foothill Blvd. La Canada, CA 91011	(818) 790-8651
	San Gabriel Valley	125 S. Baldwin Ave. Arcadia, CA 9107	(626) 574-0941
	Santa Clarita Valley	23757 Valencia Blvd. Santa Clarita, CA 91355	(661) 222-2940
	Temple City	9701 Las Tunas Dr. Temple City, CA 91780	(626) 285-0488
Construction	Palmdale House	38126 N. Sierra Hwy. Palmdale, CA 93550	(661) 267-7883
Public Works	Public Works Headquarter	900 S Fremont Ave Alhambra, CA 91803	(626) 458-5100
Environmental Programs	City of Palmdale	38250 N. Sierra Hwy. Palmdale, CA 93550	(661) 267-5399
	Newhall Region	23757 Valencia Blvd. Santa Clarita, CA 91355	(661) 222-2953
	San Gabriel Valley	125 S. Baldwin Ave. Arcadia, CA 91007	(626) 574-0958
Fleet Management	Altadena Shop	252 W. Mountain View St. Altadena, CA 91001	(626) 794-7732
	Headquarters Shop	900 S. Fremont Ave. Alhambra, CA 91803	(626) 458-7332
	Palmdale Shop (MD 5)	38126 N. Sierra Hwy. Palmdale, CA 93550	(661) 274-8248

<b>FUNCTION</b>	<b>FACILITY</b>	<b>ADDRESS</b>	<b>PHONE</b>
Stormwater Maintenance	Big Dalton Dam	2600 Big Dalton Canyon Rd. Glendora, CA 91741	(626) 857-3652
	Big Tujunga Dam	809 Big Tujunga Canyon Rd. Sunland, CA 91040	(818) 951-8329
	Cogswell Dam	13500 W. Fk San Gabr Cyn Rd. Monrovia, CA 91702	(626)358-2679
	Devils Gate Dam	1051 La Canada Verdugo Rd. Pasadena, CA 91103	(626) 797-4663
	Eaton Wash Dam	2986 New York Dr. Pasadena, CA 91107	(626) 7986764
	Eaton Yard - East	2986 New York Dr. Pasadena, CA 91107	(626) 798-6761
	Live Oak Dam	5000 Webb Canyon Rd. Claremont, CA 91711	(909) 593-9910
	Morris Dam	9500 N. San Gabriel Canyon Rd. Azusa, CA 91702	(626) 334-2090
	Pacoima Dam	15300 N. Pacoima Canyon Rd. Sylmar, CA 91342	(818) 361-8196
	Pickens Yard - West	4628 Briggs Ave. La Cresenta, CA 91214	(818) 248-3842
	Puddingstone Dam	1 Puddingstone Dr. San Dimas, CA 91773	(909) 305-2321
	Puddingstone Diversion Dam	1800 San Dimas Canyon Rd. San Dimas, CA 91773	
	San Dimas Dam	3331 San Dimas Canyon Rd. La Verne, CA 91750	(626) 458-4168
	San Dimas Yard - East	118 Pony Express Rd. San Dimas, CA 91773	(909) 592-4291
	San Gabriel Dam	9700 N. San Gabriel Canyon Azusa, CA 91702	(626) 910-1123
	Santa Anita Dam	2230 N. Santa Anita Ave. Monrovia, CA 91016	(626) 836-7293

<b>FUNCTION</b>	<b>FACILITY</b>	<b>ADDRESS</b>	<b>PHONE</b>
	Santa Clarita Yard - West	21190 Centre Pointe Pkwy Santa Clarita, CA 91350	(661) 255-0672
	Saw Pit Dam	1300 N. Canyon Blvd. Monrovia, CA 91016	(626) 357-1537
	Sierra Madre Dam	900 Brookside Ln Sierra Madre, CA 91024	(626) 355-9718
Land Development	Palmdale House - Permit Office #5	38126 N. Sierra Hwy. Palmdale, CA 93550	(661) 947-4151
Operational Services	Valencia - Permit Office #2	23757 Valencia Blvd. Santa Clarita, CA 91350	(661) 222-2948
	Placerita	22234 Placerita Canyon Rd. Santa Clarita, CA 91310	
	Eaton Yard - Electric Shop	2811 Woodlyn Rd. Pasadena, CA 91104	(626) 798-9154
	Sign Posting / Traffic Painting & Warehouse	38126 N. Sierra Hwy. Palmdale, CA 93550	(661) 265-7134
Road Maintenance	Maintenance District No. 5 (Palmdale)	38126 N. Sierra Hwy. Palmdale, CA 93550	(661) 947-7173
	Road Division 118/518	161 Valencia St. Glendora, CA 91741	(626) 335-2798
	Road Division 119/519	5213 N. Encinita Ave. Temple City, CA 91780	(626) 286-3173
	Road Division 514	3916 Dunsmore Ave. La Crescenta, CA 91214	(818) 249-3094
	Road Division 551	4859 W. Avenue L-12 Quartz Hill, CA 93534	(661) 943-4043
	Road Division 553	17931 Sierra Hwy. Canyon Country, CA 91351	(661) 252-2700
	Road Division 555	17341 E. Avenue J Lancaster, CA 93535	(661) 727-1528
	Road Division 556	27624 W. Parker Rd. Castaic, CA 91384	(661) 257-4441

<b>FUNCTION</b>	<b>FACILITY</b>	<b>ADDRESS</b>	<b>PHONE</b>
	Road Division 557	38126 N. Sierra Hwy. Palmdale, CA 93550	(661) 273-2678
	Road Division 558	8505 E. Avenue T Littlerock, CA 93543	(661) 944-1508
	Road Division 559	35100 San Francisquito Cyn Rd. Saugus, CA 91390	(661) 296-1390
Sewer Maintenance	Lake Hughes Treatment Plant	17201 Elizabeth Lake Rd. Lake Hughes, CA 93532	(661) 724-9087
	North Yard	45712 N. Division St. Lancaster, CA 93534	(661) 942-6042
	Santa Clarita Sub-Yard	21190 Centre Pointe Pkwy Santa Clarita, CA 91350	(661) 222-2569
Survey	Palmdale Yard	38126 N. Sierra Hwy. Palmdale, CA 93550	
Waterworks	North Maintenance Area - Lancaster	260 East Avenue K-8 Lancaster, CA 93535	(661) 940-5456