

FIELD COPY

**COUNTY OF LOS ANGELES
ROAD DEPARTMENT**

**PRECISE
BENCH MARK LIST**



ROSEMEAD QUAD

1965 ADJUSTMENT

FIELD COPY

PREFACE

The Road Department level net is composed of more than 1,000 miles of levels supporting in excess of 10,000 bench marks. In 1964-65, a major readjustment of the net was undertaken. To emphasize the complete break with previous elevations, the SY, SG & SL series bench marks have been re-labeled BY, BG & BL, respectively.

To facilitate the adjustment, indexing, and distribution of adjusted values of the net, the County territory was divided into 31 quads or areas. For identification purposes each quad was given a name, viz., "Rosemead," "La Mirada," "Santa Fe," etc. When bench marks and elevations in the Road Department net are used, the name of the quad in which the bench mark is located and the date of the adjustment of the elevation must be included in the bench mark description, e.g.,

BG 1887 --L+BN IN CONC HDWL OF DRAIN PIPE UNDER DR 218 FT
NE +18 FT SE C/L INT SAN JOSE HILLS RD +CAMERON AVE MKD (BM)
(COVINA --1965) ELEV. 696.238

It is expected that this general adjustment will, for the most part, remain sound for the next 8 to 12 years. As new circuits are completed, however, re-adjustment of individual quads may become advisable. It is expected that these subsequent adjustments will be in the nature of a few hundredths of a foot. When a quad is re-adjusted, new elevation lists will be published and the date of the re-adjustment will replace the "1965" at the end of the bench mark description. Two bench marks in the same quad with different adjustment dates will not normally join each other. Since all adjustments taper out to nothing at the periphery of the quad, any bench mark in one quad will join any bench mark in another quad regardless of their respective adjustment dates.

The basic accuracy of the net is reflected by an indicated field probable error of plus or minus 0.012 foot per mile of leveling as determined from 298 conditions of closure. However, many years experience in vertical control in the greater Los Angeles basin and Antelope Valley indicate that because of varying degrees of subsidence and heaving, the true datum is recovered only by obtaining substantial agreement of a number of bench marks.

The users of this net are invited to assist in its maintenance by notifying this Department of cases of obliteration, apparent mistakes in descriptions or elevations, and proven disturbance of bench marks.

DATUM: U. S. Coast and Geodetic Survey Sea Level Datum
of 1929, through the medium of the Los Angeles
County Engineer Precise Level Net, 1963 Adjust-
ment.

Abbreviations Used in Bench Mark Listings

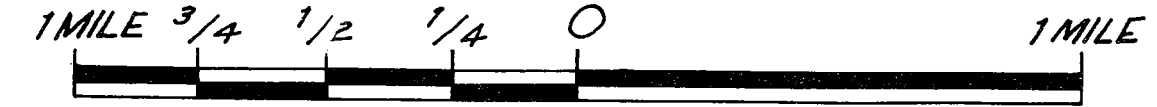
ABUT--Abutment	L+BN--Lead and Bench Mark Nail
ANG PT--Angle Point	L+BR--Lead and Brad
BC--Beginning of Curve	L+N--Lead and Nail
BCR--Beginning of Curb Return	L+PK--Lead and PK Nail
BLDG--Building	L+SPK--Lead and Spike
BT SPK--Boat or Bolt Spike	L+T--Lead and Tack
CB RET--Curb Return	MCR--Middle of Curb Return
C/L INT--Center Line Intersection	MKD--Marked
C/L PROD--Center Line Produced	NR--Near
COE--Corps of Engineers	OPP--Opposite
CONC--Concrete	PI--Point of Intersection
CS MON--County Surveyor Monument	PK+W--PK Nail and Washer
CS BR CAP--County Surveyor Brass Cap Monument	P/L--Property Line
CT SPK--Cut Spike	P O S T--Point on Semi-tangent
CTR--Center	PP--Power Pole
DN--Down	PVMT--Pavement
DR--Driveway	R D--Road Department
EC--End of Curve	RDBM--Road Department Bench Mark
ENT--Entrance	RR--Railroad
FC--Flood Control (Dept. LA County)	SPK T+W--Spike, Tin and Washer
FTG--Footing	USC+GS--United States Coast and Geodetic Survey
HDWL--Headwall	USGS--United States Geological Survey
HSE--House	WK--Walk
IP--Iron Pipe	±--Plus or Minus
LACE--Los Angeles City Engineer	+--And

RIVERA
QUAD

EMERSON
PL.
2535
2536
2537
1442

SAN
GABRIEL VALLEY
EDMOND
WELLS
MISSION
BLVD.

W



SCALE

H

I
Q
T
U
T
A
T
I
D

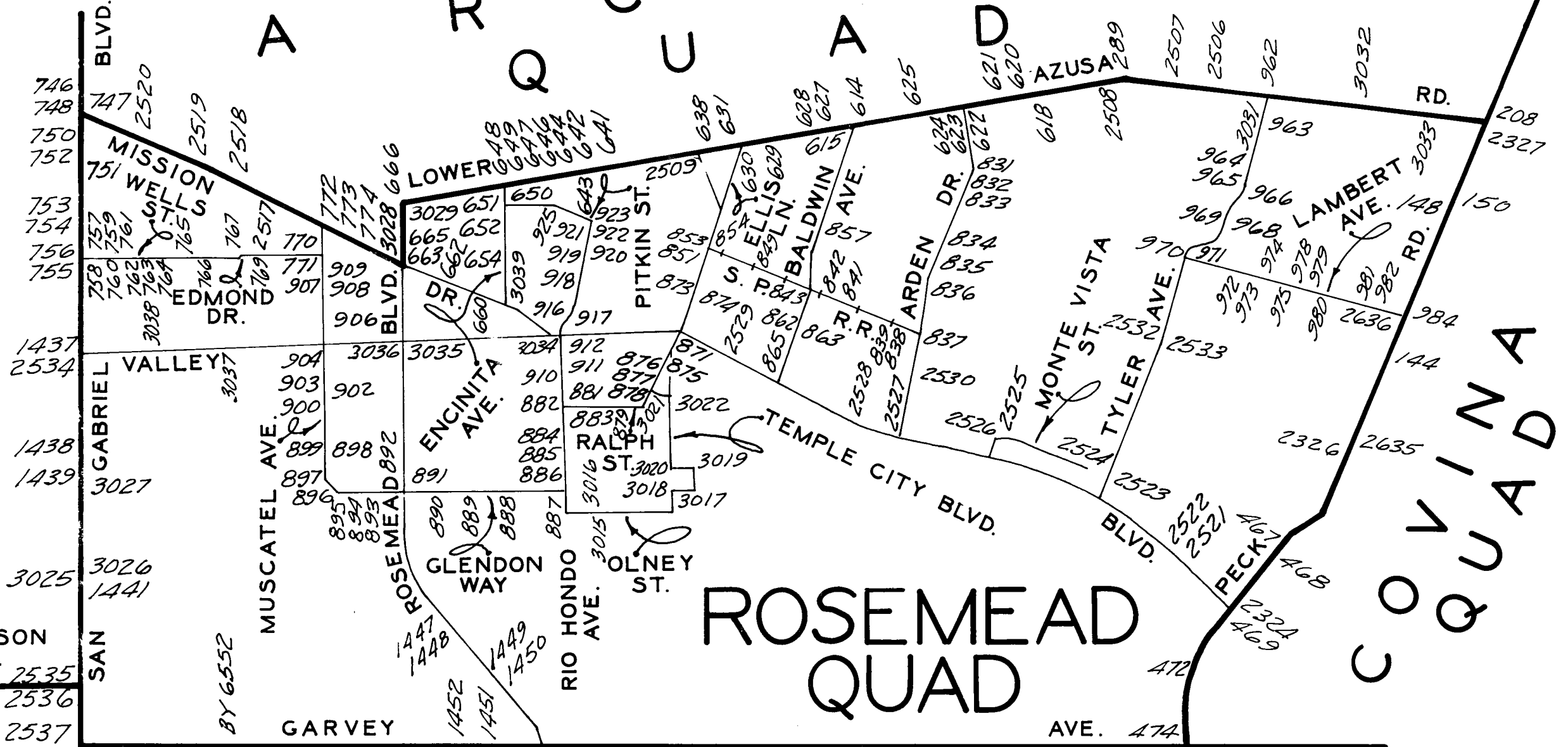
R

E

ROSEMEAD QUAD

A
R
Q
U
C
U
A
D
I
A

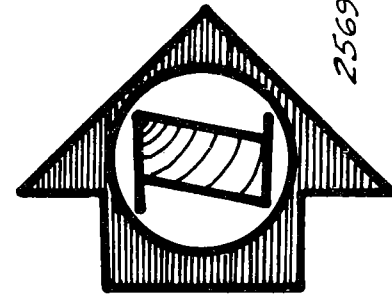
C
O
V
I
N
A
Q
U
A
D



GARVEY

AVE. 474

BY 6552
BY 4097



2569
2570
3023
2571
475

QUAD-YEAR	ELEV	DESCRIPTION (INCLUDE QUAD AND YEAR IN DESCRIPTION)	BM NUMBER
BASELINE (1965)	256.696	CS MON 116FT E C/L WALNUT GROVE AVE 40FT S C/L GARVEY BLVD 2FT S CB FACE IN WELL WITH COVER	BY 4097
BASELINE (1965)	258.109	L+T 0.3FT W BCR @ NW COR GARVEY AVE + WALNUT GROVE AVE 38FT N + 2.5FT W C/L INT	BY 6552
BASELINE (1965)	279.699	CS MON 12 FT DN @ C/L INT EMERSON PLACE + SAN GABRIEL RD	BY 6988
BASELINE (1965)	308.608	L+T @ SW COR DRIVEWAY 48FT E C/L PECK RD + 100FT S C/L BASYE ST	BG 144
BASELINE (1965)	318.271	L+T 1FT W BCR @ SW COR PECK RD + EMERY ST	BG 148
BASELINE (1965)	319.640	CS MON IN WELL 8IN DN DN C/L RANCHO PECK RD 21FT E C/L PECK RD MKD (EL MONTE N-2)	BG 150
BASELINE (1965)	323.225	L+N 1FT N BCR @ NE COR PECK RD + LOWER AZUSA RD	BG 208
BASELINE (1965)	304.485	BT SPK E CB 8FT N BCR @ NE COR LOWER AZUSA RD + EL MONTE AVE	BG 289
BASELINE (1965)	288.364	L+BN CTR HDWL 33FT @ SW COR PECK RD + 32FT N OF N RAIL SPRR	BG 467
BASELINE (1965)	288.513	L+BN CTR HDWL 34FT @ SW COR PECK RD + 37FT N OF N RAIL SPRR	BG 468
BASELINE (1965)	283.439	RD HD NAIL IN 1IN STEEL WASHER @ E BCR + W END OF CATCH BASIN @ NE COR PECK RD + VALLEY BLVD	BG 469
BASELINE (1965)	276.824	L+T IN W CB 3FT S CATCH BASIN @ NW COR PECK RD + MEEKER AVE	BG 472
BASELINE (1965)	273.384	L+T 8FT E OF CONC DR TO GAS STA @ NW COR GARVEY AVE + PECK RD	BG 474
BASELINE (1965)	273.320	L+BN 1FT W BCR @ SW COR GARVEY AVE + PECK RD	BG 475
BASELINE (1965)	316.898	USC+GS BR CAP MON IN CONC TRAFFIC SIGNAL BASE 45FT N C/L LOWER AZUSA RD + 22FT E C/L BALDWIN AVE MKD (X-1141 1961)	BG 614
BASELINE (1965)	313.592	R D MON @ C/L INT BALDWIN AVE + LOWER AZUSA RD	BG 615
BASELINE (1965)	304.023	L+SPK N CB 12FT E BCR @ NE COR LOWER AZUSA RD + DOREEN AVE	BG 618
BASELINE (1965)	304.636	L+SPK N CB 3FT E BCR @ NE COR LOWER AZUSA RD + HALIFAX RD MKD (TE 471)	BG 620
BASELINE (1965)	305.363	L+SPK N CB 5FT E BCR @ NE COR LOWER AZUSA RD + HALLOWELL AVE MKD (TE 473)	BG 621
BASELINE (1965)	306.051	L+SPK E CB 8FT S BCR @ SE COR ARDEN DR + LOWER AZUSA RD MKD (TE 474)	BG 622
BASELINE (1965)	306.571	L+SPK S CB 8FT W BCR @ SW COR LOWER AZUSA RD + ARDEN DR MKD (TE 475)	BG 623
BASELINE (1965)	306.905	L+SPK S CB LOWER AZUSA RD 55FT E C/L PROD GLICKMAN AVE 8FT E OF W DR TO CHARLES E GIDLEY SCHOOL MKD (TE 476)	BG 624

QUAD-YEAR	ELEV	DESCRIPTION (INCLUDE QUAD AND YEAR IN DESCRIPTION)	BM NUMBER
BASELINE (1965)	310.174	L+SPK E CB 5FT N BCR @ NE COR LOWER AZUSA RD + BIRCHLAND PL MKD (TE 477)	BG 625
BASELINE (1965)	316.426	L+T N CB LOWER AZUSA RD ON C/L PROD ROWLAND AVE 68FT W C/L WILLMONTE AV	BG 627
BASELINE (1965)	315.744	L+SPK N CB 5FT E BCR @ NE COR AGNES AVE + LOWER AZUSA RD MKD (TE 10)	BG 628
BASELINE (1965)	313.876	L+T WK 40FT S C/L LOWER AZUSA RD ON C/L PROD GOLDEN WEST AVE	BG 629
BASELINE (1965)	312.215	L+SPK S CB 5FT E BCR @ SE COR ELLIS LN + LOWER AZUSA RD	BG 630
BASELINE (1965)	312.735	L+T N CB LOWER AZUSA RD 40FT W C/L PROD ELLIS LN IN FRONT OF HSE NO 9667	BG 631
BASELINE (1965)	314.762	L+T N CB 1FT W BCR @ NE COR LOWER AZUSA RD + TEMPLE CITY BLVD	BG 638
BASELINE (1965)	316.781	L+SPK N CB 6FT W BCR @ NW COR HELEO AVE + LOWER AZUSA RD MKD (TE 22)	BG 641
BASELINE (1965)	318.380	L+T N CB LOWER AZUSA RD 80FT W CONC DR TO HSE NO 9371 1FT E OF END CB 420FT E RIO HONDO AVE	BG 642
BASELINE (1965)	318.007	R D MON ON C/L LOWER AZUSA RD @ ANG PT 420FT E RIO HONDO AVE	BG 643
BASELINE (1965)	330.760	USC+GS BR CAP MON IN W CONC ABUTMENT @ SW COR OF LOWER AZUSA RD BRIDGE NO B 1053 OVER EATON CN WASH 34FT S C/L LOWER AZUSA RD + 200FT W C/L RIO HONDO AVE MKD (BM S 1142-1961)	BG 644
BASELINE (1965)	327.842	L+BN S CB LOWER AZUSA RD 40FT W C/L SPRR + E OF ENCINITA AVE	BG 646
BASELINE (1965)	324.106	L+SPK IN N CB 6FT E BCR @ NE COR LOWER AZUSA RD + ENCINITA AVE MKD (WM254-A)	BG 647
BASELINE (1965)	323.761	L+T N CB 1FT W BCR @ NW COR LOWER AZUSA RD + ENCINITA AVE	BG 648
BASELINE (1965)	322.153	CS MON @ C/L INT LOWER AZUSA RD + ENCINITA AVE	BG 649
ROSEMEAD (1965)	317.902	CS MON @ C/L INT ENCINITA AVE + PITKIN ST	BG 650
ROSEMEAD (1965)	318.615	L+T W CB ENCINITA AVE ON C/L PROD PITKIN ST	BG 651
ROSEMEAD (1965)	315.309	C S MON @ C/L INT ENCINITA AVE + RIO DELL ST	BG 652
ROSEMEAD (1965)	313.157	CS MON @ C/L INT ENCINITA AVE + ROSE ST	BG 654
ROSEMEAD (1965)	316.677	L+T N CB MISSION DR ON ENCINITA RD LOMA AVE	BG 660
ROSEMEAD (1965)	325.242	L+T CONC WK MON @ INT OF ROSEMEAD HIGH SCHOOL 1FT E OF ENCINITA BRIDGE 40FT N C/L MISSION DR	BG 662
BASELINE (1965)	331.070	CS MON C/L MISSION DR @ INT OF C/L ROSEMEAD BLVD	BG 663

OUT

OUT

OUT

OUT

OUT

QUAD-YEAR	ELEV	DESCRIPTION (INCLUDE QUAD AND YEAR IN DESCRIPTION)	BM	NUMBER
BASELINE (1965)	332.921	L+T MCR @ NW COR MISSION DR + ROSEMEAD BLVD	BG	665
BASELINE (1965)	336.471	L+T W CB ROSEMEAD BLVD 50FT S C/L PROD LOWER AZUSA RD	BG	666
BASELINE (1965)	366.228	L+T CTR OF CB RET @ NW COR SAN GABRIEL BLVD + MISSION DR	BG	746
BASELINE (1965)	365.404	CS MON @ C/L INT SAN GABRIEL BLVD + MISSION DR	BG	747
BASELINE (1965)	365.619	L+T W CB 7FT S BCR @ SW COR SAN GABRIEL BLVD + MISSION DR	BG	748
ROSEMEAD (1965)	362.012	L+T W CB 2FT S BCR @ SW COR SAN GABRIEL BLVD + FAIRVIEW AVE	BG	750
ROSEMEAD (1965)	355.798	CS MON @ C/L INT CENTRAL AVE + SAN GABRIEL BLVD	BG	751
ROSEMEAD (1965)	356.448	L+T W CB 5FT N BCR @ NW COR SAN GABRIEL BLVD + CENTRAL AVE	BG	752
ROSEMEAD (1965)	349.550	L+T W CB 2FT N BCR @ NW COR SAN GABRIEL BLVD + CHESTNUT AVE	BG	753
ROSEMEAD (1965)	348.668	L+T W CB 4FT S BCR @ SW COR SAN GABRIEL BLVD + CHESTNUT AVE	BG	754
ROSEMEAD (1965)	342.133	L+SPK W CB 1FT S BCR @ SW COR SAN GABRIEL BLVD + WELLS ST MKD (WM 6)	BG	755
ROSEMEAD (1965)	342.219	CS MON 14FT W C/L INT WELLS ST + SAN GABRIEL BLVD	BG	756
ROSEMEAD (1965)	342.368	CS MON @ C/L INT WELLS ST + SAN GABRIEL BLVD	BG	757
ROSEMEAD (1965)	342.268	L+T E CB 4FT S BCR @ SE COR SAN GABRIEL BLVD + WELLS ST	BG	758
ROSEMEAD (1965)	342.743	CS MON @ C/L INT WELLS ST + GLADYS AVE	BG	759
ROSEMEAD (1965)	343.457	L+SPK E CB 1FT S BCR @ SE COR GLADYS AVE + WELLS ST MKD (WM 386)	BG	760
ROSEMEAD (1965)	342.351	CS MON @ C/L INT WELLS ST + CHARLOTTE AVE TO THE N	BG	761
ROSEMEAD (1965)	342.141	CS MON @ WELLS ST + CHARLOTTE AVE TO THE S	BG	762
ROSEMEAD (1965)	342.275	L+BN W CB 22FT S BCR @ SW COR WELLS ST + CHARLOTTE AVE TO THE S	BG	763
ROSEMEAD (1965)	332.690	FC MON @ ANGLE PT OF WING WALL @ SE COR BRIDGE NO B800 15FT W + 25FT S C/L INT DELTA ST + WELLS ST MKD (58-513)	BG	764
ROSEMEAD (1965)	338.534	L+T CTR CB RET @ NE COR WELLS ST + EARLE ST	BG	765
ROSEMEAD (1965)	338.662	L+BN N CB WELLS ST 60FT E OF DR TO HSE NO 8471 6FT W OF EDISON CO R/W	BG	766
ROSEMEAD (1965)	338.583	L+BN 1FT FROM NE COR OF WK TO HSE NO 4319 23FT W + 55FT S C/L INT WELLS ST + WELLS AVE MKD (WM 285)	BG	767

QUAD-YEAR	ELEV	DESCRIPTION (INCLUDE QUAD AND YEAR IN DESCRIPTION)	BM	NUMBER
ROSEMEAD (1965)	343.549	L+T W EDGE CONC DR TO HSE NO 8646 EDMOND DR 30FT S C/L	BG	769
ROSEMEAD (1965)	340.345	CS MON @ C/L INT MUSCATEL AVE + EDMOND DR	BG	770
ROSEMEAD (1965)	341.302	L+T NR CTR CONC WK TO HSE NO 4328 MUSCATEL AVE 50FT E C/L 7FT S C/L PROD EDMOND DR	BG	771
BASELINE (1965)	345.934	SPK IN S EDGE CONC APPROX TO GAS STA NO 8801 27FT N + 25FT E C/L INT MISSION DR + MUSCATEL AVE MKD (WM 44)	BG	772
BASELINE (1965)	339.065	SPK E EDGE CONC APPROX TO HSE NO 8868 35FT S + 17FT W C/L INT MISSION DR + IVAR AVE 3FT S OF END OF WK	BG	773
BASELINE (1965)	336.159	SPK NR SW COR CONC APPROX TO STORE NO 8923 40FT N + 20FT E C/L INT MISSION DR + IVAR AVE TO THE N	BG	774
ROSEMEAD (1965)	296.538	L+BN E CB 1FT N BCR @ NE COR OF ARDEN DR + ARDEN WAY	BG	831
ROSEMEAD (1965)	295.040	RE TAG NO 2000 E CB @ ANG PT @ S P/L OF HSE NO 4544 115FT S C/L INT ARDEN DR + ARDEN WAY	BG	832
ROSEMEAD (1965)	292.679	L+BN E CB 4FT N BCR @ NE COR ARDEN DR + MARSEN ST	BG	833
ROSEMEAD (1965)	287.773	L+BN E CB 3FT N BCR @ NE COR ARDEN DR + BISBY ST	BG	834
ROSEMEAD (1965)	285.827	RDBM TAG E CB ARDEN DR 21FT N CB RET @ NE COR GIDLEY ST 30FT E + 70FT W C/L INT	BG	835
ROSEMEAD (1965)	284.544	L+T N END OF CONC WK TO HSE NO 4226 30FT S C/L VENITA ST + 87FT E C/L ARDEN DR	BG	836
ROSEMEAD (1965)	284.153	L+SPK E CB 20FT N OF ARDEN DR 55FT N C/L PROD RAILROAD DR MKD (WM 634)	BG	837
ROSEMEAD (1965)	280.384	L+SPK N EDGE OF CONC WK TO HSE NO 4038 DE GARMO AVE 75FT S C/L RAILROAD DR	BG	838
ROSEMEAD (1965)	278.827	L+SPK CTR OF CONC WK TO HSE NO 10159 33FT N C/L RAILROAD DR 10FT W C/L PROD VELMA AVE	BG	839
ROSEMEAD (1965)	283.003	L+T CTR OF CONC WK TO HSE NO 4159 35FT S C/L BESSIE AVE 10FT W C/L GIBSON RD	BG	841
ROSEMEAD (1965)	281.371	L+SPK NE COR CONC DR TO HSE NO 4163 70FT S C/L BESSIE AVE + 20FT W C/L SHIRLEY AVE MKD (WM 486)	BG	842
ROSEMEAD (1965)	282.921	RDBM TAG IN S CB BESSIE AVE 21FT E CB IN FRONT OF HSE NO 9960 30FT S C/L BESSIE AVE + 135FT W BALDWIN AVE	BG	843
ROSEMEAD (1965)	291.970	L+BN SE COR OF SPRINGWELL 30FT W C/L PROD ROWLAND AVE + 50FT N C/L BESSIE AVE	BG	849
ROSEMEAD (1965)	298.102	L+SPK W END OF WINGWALL CONC CULV 31FT W C/L TEMPLE CITY BLVD 9FT S OF S RAIL SPRR MKD (TE 16)	BG	851
ROSEMEAD (1965)	298.080	L+SPK W END WINGWALL CONC CULV 31FT W C/L TEMPLE CITY BLVD 9FT N OF N RAIL SPRR MKD (TE 15)	BG	853

QUAD-YEAR	ELEV	DESCRIPTION (INCLUDE QUAD AND YEAR IN DESCRIPTION)	BM	NUMBER
ROSEMEAD (1965)	300.046	RDBM TAG IN S CONC ABUT OF TEMPLE CITY BLVD BRIDGE NO B1051 OVER EATON CN WASH 31FT E C/L TEMPLE CITY BLVD + 66FT N SPRR	BG	854
ROSEMEAD (1965)	302.672	L+T IN CONC WLK TO OFFICE BLDG NO 4439 BALDWIN AVE 10FT S OF N END OF BLDG 51FT W C/L BALDWIN AVE + 1075FT S LOWER AZUSA RD	BG	857
ROSEMEAD (1965)	274.300	RD MON @ C/L INT ROSE T BALDWIN AVE	BG	862
ROSEMEAD (1965)	275.388	L+T S EDGE OF CONC WK TO HSE NO 4032 40FT E C/L BALDWIN AVE + 55FT S C/	BG	863
ROSEMEAD (1965)	272.660	RDBM TAG IN N CB OF VALLEY BLVD 1FT W CB RET @ NW COR OF BALDWIN AVE 38FT N + 50FT W C/L INT BALDWIN AVE	BG	865
ROSEMEAD (1965)	281.163	L+T NR CTR OF CB RET @ SE COR VALLEY BLVD + TEMPLE CITY BLVD 42FT S + 45FT E C/L INT	BG	871
ROSEMEAD (1965)	286.051	L+BN IN 2IN CONC WLK TO HSE NO 4013 TEMPLE CITY BLVD 145FT S + 55FT W C/L INT ABILENE ST + TEMPLE CITY BLVD	BG	873
ROSEMEAD (1965)	285.071	L+BN S CB 0.5FT W BCR 15FT S + 67FT E C/L INT TEMPLE CITY BLVD + ABILENE ST	BG	874
ROSEMEAD (1965)	278.782	L+SPK E CB ELLIS LANE 20FT E C/L + 0.7FT N C/L PROD STEELE ST MKD (WM 376)	BG	875
ROSEMEAD (1965)	274.522	L+SPK W CB 4FT S BCR @ SW COR ELLIS LANE + GUESS ST MKD (R 40)	BG	876
ROSEMEAD (1965)	271.405	CS MON 27FT N C/L INT ELLIS LANE + RALPH ST	BG	877
ROSEMEAD (1965)	272.681	L+SPK W CB 15FT N BCR @ NW COR ELLIS LANE + RALPH ST MKD (WM 378)	BG	878
ROSEMEAD (1965)	274.533	L+T NE COR CONC DR TO HSE NO 9514 RALPH ST 26FT S C/L + 470FT W ELLIS LANE	BG	879
ROSEMEAD (1965)	281.013	L+T CTR CB RET @ NE COR RIO HONDO AVE + RALPH ST MKD (R-8)	BG	881
ROSEMEAD (1965)	280.247	L+BRAD NR CTR CB RET @ SW COR RALPH ST + RIO HONDO AVE	BG	882
ROSEMEAD (1965)	273.033	L+SPK E CB 10FT S BCR @ SE COR RIO HONDO AVE + DE ADALENA ST MKD (WM 363)	BG	883
ROSEMEAD (1965)	272.999	L+T CTR CB RET @ NW COR RIO HONDO AVE + E MARSHALL ST MKD (R-6)	BG	884
ROSEMEAD (1965)	272.639	L+T CTR CB RET @ SW COR RIO HONDO + MARSHALL ST	BG	885
ROSEMEAD (1965)	268.919	L+T CTR CB RET @ NW COR RIO HONDO AVE + GLENDON WAY MKD (R-5)	BG	886
ROSEMEAD (1965)	267.575	L+T CTR CB RET @ SW COR RIO HONDO AVE + GLENDON WAY	BG	887
ROSEMEAD (1965)	268.909	L+T W CB OF MAC DR TO HSE NO 9318 GLENDON WAY 30FT S C/L + 333FT E LINDALEE AVE	BG	888
ROSEMEAD (1965)	271.731	L+T W EDGE CONC DR TO HSE NO 1152 GLENDON WAY 31FT S C/L + 1255FT E ROSEMEAD BLVD	BG	889

QUAD-YEAR	ELEV	DESCRIPTION (INCLUDE QUAD AND YEAR IN DESCRIPTION)	BM	NUMBER
ROSEMEAD (1965)	278.151	L+T W CB CONC DR TO HSE 33FT S C/L + 690FT E ROSEMEAD BLVD	BG	890
ROSEMEAD (1965)	279.851	L+BN N CB 1FT E BCR @ NE COR ROSEMEAD BLVD + GLENDON WAY	BG	891
ROSEMEAD (1965)	281.241	L+BN N CB 10FT W BCR @ NW COR ROSEMEAD BLVD + GLENDON WAY	BG	892
ROSEMEAD (1965)	281.876	L+T S CB GLENDON WAY 18FT S C/L + 60FT W C/L IVAR ST	BG	893
ROSEMEAD (1965)	284.449	FC BR DISK ON E WALL OF RUBIO WASH 35FT SW C/L INT GLENDON WAY + MUSCATEL AVE 12FT W OF FOOT BRIDGE MKD (58-505)	BG	894
ROSEMEAD (1965)	283.444	CS MON @ C/L INT MUSCATEL AVE + GLENDON WAY	BG	895
ROSEMEAD (1965)	286.692	CS MON @ C/L ANG PT MUSCATEL AVE 250FT N C/L GLENDON WAY + 380FT S C/L MARSHALL ST	BG	896
ROSEMEAD (1965)	287.825	L+BN IN W WINGWALL CONC DRAIN TO FC CHANNEL 10FT N ANG PT MUSCATEL AVE 15FT W C/L OPP HSE 3622	BG	897
ROSEMEAD (1965)	291.370	L+BN E CB 6FT S BCR @ SE COR MUSCATEL AVE + MARSHALL ST MKD (WM 453)	BG	898
ROSEMEAD (1965)	290.983	CS MON @ C/L INT MUSCATEL AVE + MARSHALL ST	BG	899
ROSEMEAD (1965)	304.757	CS MON @ C/L INT MUSCATEL AVE + RALPH ST	BG	900
ROSEMEAD (1965)	309.190	L+SPK S CB 6FT E BCR @ SE COR GUESS ST + MUSCATEL AVE MKD (WM 445)	BG	902
ROSEMEAD (1965)	308.511	CS MON @ C/L INT GUESS ST + MUSCATEL AVE	BG	903
ROSEMEAD (1965)	319.529	CS MON C/L MUSCATEL AVE 100FT S C/L VALLEY BLVD	BG	904
ROSEMEAD (1965)	322.671	CS MON C/L MUSCATEL AVE 100FT N C/L VALLEY BLVD	BG	906
ROSEMEAD (1965)	332.304	CS MON @ C/L INT MUSCATEL AVE + SCOTT ST	BG	907
ROSEMEAD (1965)	333.322	L+T E CB MUSCATEL AVE @ C/L PROD SCOTT ST 20FT E C/L INT	BG	908
ROSEMEAD (1965)	337.466	L+SPK N CB 5FT E BCR @ NE COR MUSCATEL AVE + LAWRENCE AVE	BG	909
ROSEMEAD (1965)	288.065	L+SPK W CB 5FT S BCR @ SW COR RIO HONDO AVE + GUESS ST MKD (WM 354)	BG	910
ROSEMEAD (1965)	289.347	L+SPK E CB 5FT N BCR @ NE COR RIO HONDO AVE + GUESS ST MKD (WM 355)	BG	911
ROSEMEAD (1965)	296.054	L+SPK W CB 6FT S BCR @ SW COR RIO HONDO AVE + STEELE ST MKD (WM 348)	BG	912
ROSEMEAD (1965)	295.851	CS MON @ PI 190FT N C/L INT VALLEY BLVD + RIO HONDO AVE	BG	916

QUAD-YEAR	ELEV	DESCRIPTION (INCLUDE QUAD AND YEAR IN DESCRIPTION)	BM	NUMBER
ROSEMEAD (1965)	298.792	L+T SE COR OF WK TO HSE NO 4023 RIO HONDO AVE 10FT E C/L PROD 45FT N PI + 235FT N VALLEY BLVD	BG	917
ROSEMEAD (1965)	298.250	L+T N CB OF DR TO HSE NO 4047 2FT W OF END CB + 35FT W C/L RIO HONDO AVE	BG	918
ROSEMEAD (1965)	302.240	CS MON @ C/L INT ROSE ST + RIO HONDO AVE	BG	919
ROSEMEAD (1965)	303.472	L+ SPK N EDGE CONC WK TO HSE NO 4302 @ NE COR RIO HONDO AVE + ROSE ST MKD (WM 244)	BG	920
ROSEMEAD (1965)	305.922	CS MON C/L RIO HONDO AVE OPP N P/L HSE NO 4341 230FT S C/L PITKIN ST	BG	921
ROSEMEAD (1965)	306.872	L+T NE COR OF CONC DR TO HSE NO 4341 RIO HONDO AVE 31FT W C/L	BG	922
ROSEMEAD (1965)	307.590	CS MON @ C/L INT RIO HONDO AVE + PITKIN ST	BG	923
ROSEMEAD (1965)	314.344	CS MON ON PI PITKIN ST IN FRONT OF HSE NO 9279	BG	925
BASELINE (1965)	315.266	CS MON @ C/L INT LOWER AZULARD + TYLER AVE (E EDGE)	BG	962
ROSEMEAD (1965)	312.929	L+T E CB 1FT N @ NE COR TYLER AVE + RANCHITO ST	BG	963
ROSEMEAD (1965)	308.843	RD MON @ C/L INT TYLER AVE + HUDDART ST	BG	964
ROSEMEAD (1965)	309.378	L+T NE COR CONC WK TO HSE NO 4541 TYLER AVE 40FT W C/L + 60FT S C/L HUDDART ST	BG	965
ROSEMEAD (1965)	306.197	RD MON 11FT E C/L INT TYLER AVE + EMERY ST	BG	966
ROSEMEAD (1965)	302.197	RD MON 25FT E + 25FT S C/L INT TYLER AVE + MC GIRK ST	BG	968
ROSEMEAD (1965)	303.917	L+BN N END GAS PUMP @ GAS STA NO 4386 50FT E C/L TYLER AVE + 60FT S C/L MCGIRK ST	BG	969
ROSEMEAD (1965)	298.472	RD MON ON C/L PROD LAMBERT AVE 35FT W C/L TYLER AVE	BG	970
ROSEMEAD (1965)	301.320	L+T W EDGE CONC WK TO HSE NO 11011 @ NE COR LAMBERT AVE + TYLER AVE 35FT N + 140FT E C/L INT	BG	971
ROSEMEAD (1965)	300.954	L+T W CONC CB DR TO HSE NO 11112 38FT S C/L LAMBERT AVE	BG	972
ROSEMEAD (1965)	302.930	L+BN NE COR CONC DR TO HSE NO 4253 30FT W C/L CYPRESS AVE + 55FT S C/L LAMBERT AVE	BG	973
ROSEMEAD (1965)	302.514	RD MON @ C/L INT CYPRESS AVE + LAMBERT AVE	BG	974
ROSEMEAD (1965)	304.959	L+T CONC APRON TO HSE NO 4261 30FT S C/L LAMBERT AVE ON C/L PROD HUDDART AVE	BG	975
ROSEMEAD (1965)	305.694	L+T NR E EDGE CONC DR TO HSE NO 11265 32FT N C/L LAMBERT AVE + 35FT E C/L PROD CEDAR AVE	BG	978
ROSEMEAD (1965)	305.316	RD MON @ C/L INT LAMBERT AVE + CEDAR AVE TO N	BG	979

QUAD-YEAR	ELEV	DESCRIPTION (INCLUDE QUAD AND YEAR IN DESCRIPTION)	BM	NUMBER
ROSEMEAD (1965)	306.481	L+T W EDGE CONC DR TO HSE NO 11322 LAMBERT AVE 30FT S C/L 17FT E C/L PROD CEDAR AVE	BG	980
ROSEMEAD (1965)	308.940	L+T CTR CONC DR TO HSE NO 11403 LAMBERT AVE 30FT N C/L + 300FT W CROSSVALE AVE	BG	981
ROSEMEAD (1965)	312.488	L+BN W CB 3FT N BCR @ NW COR ELROVIA AVE + LAMBERT AVE	BG	982
BASELINE (1965)	313.497	RDBM TAG E CB 1FT S BCR @ NE COR PECK RD + LAMBERT AVE 50FT N + 39FT E C/L INT	BG	984
ROSEMEAD (1965)	325.333	CS MON 18 IN DN 2FT S + 2FT W C/L INT SAN GABRIEL BLVD + VALLEY BLVD MKD (EL MONTE B3 RE 2177)	BG	1437
ROSEMEAD (1965)	311.002	SPK W CB 18FT S BCR @ SW COR NORWOOD PL + SAN GABRIEL BLVD MKD (WM 21)	BG	1438
ROSEMEAD (1965)	307.387	SPK IN W CB 7FT S BCR @ SW COR MARSHALL ST + SAN GABRIEL BLVD MKD (WM 22)	BG	1439
ROSEMEAD (1965)	293.655	L+T IN E CB SAN GABRIEL BLVD 85FT S C/L HELLMAN AVE	BG	1441
BASELINE (1965)	271.538	CS MON IN WELL 23FT S C/L GARVEY AVE + 14FT W C/L SAN GABRIEL BLVD	BG	1442
ROSEMEAD (1965)	252.358	L+BN IN S CB 20FT W BCR + 340FT NW OF DR TO BLDG NO 3306 ROSEMEAD BLVD	BG	1447
ROSEMEAD (1965)	251.024	L+BN IN S CB 15FT E BCR + 185FT NW OF DR TO BLDG NO3306 ROSEMEAD BLVD	BG	1448
ROSEMEAD (1965)	245.709	L+BN N CB ROSEMEAD BLVD 1FT W BCR + 45FT W C/L WHITMORE ST	BG	1449
ROSEMEAD (1965)	246.490	L+BN N CB ROSEMEAD BLVD 1FT W BCR + 2FT W OF CATCH BASIN 80FT E C/L WHITMORE ST	BG	1450
BASELINE (1965)	246.918	FC BR CAP @ NE COR OF CONC BRIDGE NO 53-95 @ GARVEY AVE + RIO HONDO RIVER MKD (BM 57-13)	BG	1451
BASELINE (1965)	249.047	FC BR CAP @ NW COR OF CONC BRIDGE NO 53-95 @ GARVEY AVE + RIO HONDO RIVER MKD (MB 57-11)	BG	1452
BASELINE (1965)	282.696	CS MON IN WELL 8IN DN @ NE COR PECK RD + VALLEY BLVD 40FT N + 64FT E C/L INT MKD (BM 15-1)	BG	2324
BASELINE (1965)	297.326	RDBM TAG SE COR CONC TEL M H @ SE COR PECK RD + FOREST GROVE ST 22FT S + 68FT E C/L INT	BG	2326
BASELINE (1965)	321.998	CS MON IN WELL 9IN DN @ SE COR PECK RD + LOWER AZUSA RD 1FT BACK OF CB FACE + 47FT E + 63FT S C/L INT MKD (BM 15-4)	BG	2327
BASELINE (1965)	308.488	FC BR CAP MON IN E ABUT @ NE COR OF LOWER AZUSA RD BRIDGE NO B1256 OVER RIO HONDO 32FT N C/L LOWER AZUSA RD + 0.3MI W TYLER AVE	BG	2506
BASELINE (1965)	306.869	RDBM TAG IN N CB LOWER AZUSA RD 3FT W NW COR OF LOWER AZUSA RD BRIDGE NO B1256 OVER RIO HONDO RIVER 25FT N C/L LOWER AZUSA RD + 0.3MI W TYLER AVE	BG	2507
BASELINE (1965)	302.777	CS BM MON IN WELL 17FT N C/L LOWER AZUSA RD + 71FT E C/L EL MONTE AVE MKD (BM 19-7 1952 RE 63)	BG	2508

QUAD-YEAR	ELEV	DESCRIPTION (INCLUDE QUAD AND YEAR IN DESCRIPTION)	BM NUMBER
BASELINE (1965)	313.667	CS MON IN WELL @ C/L INT LOWER AZUSA RD + TEMPLE CITY BLVD	BG 2509
BASELINE (1965)	353.237	L+BN NR N EDGE CF CONC DRWY TO HSE NO 4471 BARTLETT AVE @ SW COR OF MISSION DR 25FT W + 55FT S C/L INT	BG 2517
BASELINE (1965)	354.997	CS MON IN WELL @ C/L INT MISSION DR + WALNUT GROVE AVE	BG 2518
BASELINE (1965)	357.893	L+T IN N CB MISSION DR 5FT E CB RET @ NE COR WILLARD AVE 30FT N + 40FT E C/L INT	BG 2519
BASELINE (1965)	364.749	FC BR CAP IN CONC ABUT @ NE COR OF MISSION DR BRIDGE NO B189 OVER RUBIO WASH 30FT N C/L MISSION DR + 210FT E CHARLOTTE AVE MKD (BM 58-516)	BG 2520
ROSEMEAD (1965)	282.545	RD HD N IN LIN STEEL WASHER ON NE COR VALLEY BLVD + EASTMONT AVE 41FT N + 40FT E C/L INT	BG 2521
ROSEMEAD (1965)	282.637	L+BR N CB 1FT W BCR @ NW COR VALLEY BLVD + EASTMONT AVE 40FT N + 40FT W C/L INT	BG 2522
ROSEMEAD (1965)	286.211	SURVEY MON IN WELL 14IN DN ON C/L MONTEVISTA ST 40FT E C/L TYLER AVE MKD (DIV OF HWY)	BG 2523
ROSEMEAD (1965)	286.945	L+TRANSIT TK N CB 6FT W BCR @ NW COR MONTEVISTA ST + TYLER AVE 32FT N + 65FT W C/L INT	BG 2524
ROSEMEAD (1965)	281.802	SURVEY MON IN WELL 14IN DN ON C/L INT MONTEVISTA ST + HOYT AVE MKD (DIV OF HWY)	BG 2525
ROSEMEAD (1965)	282.162	L+T TK N CB 5FT W BCR @ NW COR MONTEVISTA ST + HOYT AVE 32FT N + 66FT W C/L INT	BG 2526
ROSEMEAD (1965)	277.558	L+T IN N CB VALLEY BLVD 1FT E CB RET @ NW COR ARDEN DR 38FT N + 60FT W C/L INT	BG 2527
ROSEMEAD (1965)	275.805	L+T IN N CB VALLEY BLVD 1FT E CB RET @ NW COR VELMA ST 38FT N + 60FT W C/L INT	BG 2528
ROSEMEAD (1965)	276.187	L+T IN N CB VALLEY BLVD 1FT E CB RET @ NW COR OF ROWLAND AVE 38FT N + 60FT W C/L INT	BG 2529
ROSEMEAD (1965)	281.089	CS MON IN WELL @ C/L INT ARDEN DR + ROSE ST	BG 2530
ROSEMEAD (1965)	294.340	L+BR W CB 3FT S BCR @ SW COR TYLER AVE + BRYANT RD 44FT S + 28FT W C/L INT	BG 2532
ROSEMEAD (1965)	294.504	FLAT HD SPK E CB 19FT S BCR @ SE COR TYLER AVE + BRYANT RD 58FT S + 28FT E C/L INT	BG 2533
ROSEMEAD (1965)	326.545	L+BN W CB 1FT S BCR @ SW COR VALLEY BLVD + SAN GABRIEL BLVD 60FT S + 38FT W C/L INT MKD (BM)	BG 2534
BASELINE (1965)	279.711	RD HD SPK W CB 10FT S BCR @ SW COR SAN GABRIEL BLVD + EMERSON PL 50FT S + 38FT W C/L INT MKD (WM 27)	BG 2535
BASELINE (1965)	276.410	RD HD SPK W CB 10FT S BCR @ SW COR SAN GABRIEL BLVD + WHITMORE ST 40FT S + 38FT W C/L INT MKD (WM 28)	BG 2536
BASELINE (1965)	275.880	FC BR CAP IN W WINGWALL 73FT N C/L GARVEY AVE + 225FT W C/L SAN GABRIEL BLVD MKD (BM 55-24)	BG 2537

QUAD-YEAR	ELEV	DESCRIPTION (INCLUDE QUAD AND YEAR IN DESCRIPTION)	BM NUMBER
BASELINE (1965)	250.036	CS ANG PNT MON IN WELL 8IN 17FT NLY OF S CB LINE GARVEY AVE + 18IN ELY OF WLY EDGE PVMT POTRERO AVE MKD (EL MONTE F5)	BG 2569
BASELINE (1965)	262.649	CS MON IN WELL 8IN DN ON SELY COR GARVEY AVE + CENTRAL AVE 40FT S + 180FT E C/L INT 2FT S OF CB FACE MKD (BM 12-7)	BG 2570
BASELINE (1965)	266.646	CS MON IN WELL 11IN DN ON SW COR TYLER AVE + GARVEY AVE 40FT S + 45FT W C/L INT (MKD BM 12-6)	BG 2571
BASELINE (1965)	296.369	CS MON IN WELL 12IN DN 1FT E CB @ SE COR FORREST GROVE ST + PECK RD 71FT S + 41FT E C/L INT	BG 2635
BASELINE (1965)	313.469	CS BR CAP FLUSH IN CONC LIGHT BASE FOR GAS STA @ SW COR PECK RD + LAMBERT AVE 40FT S + 47FT W C/L INT MKD (15-3-A 1963)	BG 2636
ROSEMEAD (1965)	257.000	L+T S CB OLNEY ST 18FT S C/L @ C/L PROD VANE AVE	BG 3015
ROSEMEAD (1965)	257.347	L+T N CB 8FT W BCR @ NW COR OLNEY ST + VANE AVE 20FT N + 32FT E C/L INT	BG 3016
ROSEMEAD (1965)	260.145	ST HWY MON 10IN DN @ C/L INT TEMPLE CITY BLVD + LOFTUS DR	BG 3017
ROSEMEAD (1965)	261.063	L+BRAD E CB 1FT S BCR @ NE COR TEMPLE CITY BLVD + LOFTUS DR 54FT N + 28FT E C/L INT	BG 3018
ROSEMEAD (1965)	263.342	L+T CONC DR SW COR BROOKLINE AVE + MARSHALL ST 88FT W + 28FT S C/L INT MKD (BM)	BG 3019
ROSEMEAD (1965)	261.375	CS MON 8IN DN @ C/L INT TEMPLE CITY BLVD + MARSHALL ST MKD (CO ENG RE 5869)	BG 3020
ROSEMEAD (1965)	271.401	CS MON 9IN DN @ C/L INT TEMPLE CITY BLVD + GUESS ST MKD (CO ENG RE 329)	BG 3021
ROSEMEAD (1965)	272.839	RD HD SPK N CB 4FT W BCR @ NW TEMPLE CITY BLVD + GUESS ST 18FT N + 50FT W C/L INT MKD (R 38)	BG 3022
BASELINE (1965)	264.601	L+BN S CB 1FT E BCR @ SE COR HOYT AVE + GARVEY AVE 50FT E + 38FT S C/L INT	BG 3023
ROSEMEAD (1965)	294.479	CS MON IN DIVIDER STRIP 34FT @ C/L HELLMAN AVE + C/L SAN GABRIEL BLVD MKD (EL MONTE B-4)	BG 3025
ROSEMEAD (1965)	295.211	STATE HWY BR DSK C/L SAN GABRIEL BLVD IN S END DIVIDER STRIP 23FT N C/L HELLMAN AVE	BG 3026
ROSEMEAD (1965)	307.323	STATE HWY BR DSK IN CTR DIVIDER STRIP SAN GABRIEL BLVD 285FT S C/L MARSHALL ST TO THE EAST	BG 3027
BASELINE (1965)	332.125	CS MON C/L MISSION DR, 40FT W C/L ROSEMEAD BLVD	BG 3028
BASELINE (1965)	336.175	L+T E CB 8FT S BCR @ SE COR ROSEMEAD BLVD + LOWER AZUSA RD 50FT S + 40FT E C/L INT	BG 3029
BASELINE (1965)	316.137	RDBM TAG S CB 1FT W BCR @ S COR LOWER AZUSA RD + TYLER AVE 63FT E + 31FT S	BG 3031
BASELINE (1965)	318.652	RD BM TAG N CB 1FT W BCR @ NW COR LOWER AZUSA RD + CEDAR AVE 35FT W + 28FT N C/L INT	BG 3032
BASELINE (1965)	320.321	L+SPK S CB @ SE COR LOWER AZUSA RD + EL ROVIA AVE 75FT E + 28FT S C/L INT	BG 3033

QUAD-YEAR	ELEV	DESCRIPTION (INCLUDE QUAD AND YEAR IN DESCRIPTION)	BM NUMBER
ROSEMEAD (1965)	296.543	BT SPK S CB 3FT W BCR @ SW COR VALLEY BLVD + RIO HONDO AVE 48FT W + 37FT S C/L INT	BG 3034
ROSEMEAD (1965)	315.676	BT SPK E CB 10FT S BCR @ SE COR VALLEY BLVD + ROSEMEAD BLVD 72FT S + 40FT E COL INT	BG 3035
ROSEMEAD (1965)	316.591	L+BN S CB 5FT W BCR @ SW COR VALLEY BLVD + ROSEMEAD BLVD 57FT W + 37FT S C/L INT	BG 3036
ROSEMEAD (1965)	321.061	BT SPK W CB 5FT N BCR @ NW COR VALLEY BLVD + WALNUT GROVE AVE 70FT N + 20FT S C/L INT	BG 3037
ROSEMEAD (1965)	326.584	L+T CB RET @ NW COR VALLEY BLVD + DELTA ST 90FT N + 30FT W C/L INT	BG 3038
ROSEMEAD (1965)	312.205	RD BM TAG E CB 20FT N BCR @ SE COR ENCINITA AVE + MISSION DR 74FT N + 18FT S C/L INT	BG 3039
BASELINE (1965)	279.699	CS MON 12IN DN @ C/L INT EMERSON PLACE ++ OE GABRIEL BLVD	BG 3167