

**COUNTY OF LOS ANGELES**

**ROAD DEPARTMENT**

**1960**



**FAIRFAX QUAD**

**BENCH MARKS**

## PREFACE

The Road Department level net is composed of some 1,000 miles of levels supporting more than 10,000 bench marks. In 1955, a major re-adjustment of the net was undertaken resulting in revised bench mark elevations of which the accompanying list is a part.

To facilitate the adjustment, indexing, and distribution of adjusted values of the net, the county territory was divided into 30 quads or areas. For identification purposes each quad was given a name, viz., "Rosemead", "La Mirada", "Santa Fe", etc. When bench marks and elevations in the Road Dept. net are used, the name of the quad in which the bench mark is located and the date of the adjustment of the elevation must be included in the bench mark description, e.g.,

SG 908 - L & T in E. cb. Miscatel Ave. on C/L prod.  
Scott St. (Rosemead - 1955)                      Elev. 333.517

It is expected that this general adjustment will, for the most part, remain sound for the next 15 or 20 years. As new circuits are completed, however, re-adjustment of individual quads may become advisable. It is expected that these subsequent adjustments will be in the nature of a few hundredths of a foot. When a quad is re-adjusted, new elevation lists will be published and the date of the re-adjustment will replace the "1955" at the end of the bench mark description. Two bench marks in the same quad with different adjustment dates will not normally join each other. Since all adjustments taper out to nothing at the periphery of the quad, any bench mark in one quad will join any bench mark in another quad regardless of their respective adjustment dates.

The basic accuracy of the net is reflected by an indicated field probable error of  $\pm 0.12$  foot per mile of leveling as determined from 298 conditions of closure. However, many years experience in vertical control in the greater Los Angeles basin & Antelope Valley indicate that because of varying degrees of subsidence and heaving, the true datum is recovered only by obtaining substantial agreement of a number of bench marks.

The users of this net are invited to assist in its maintenance by notifying this Department of cases of obliteration, apparent mistakes in descriptions or elevations, and proven disturbance of bench marks.

---

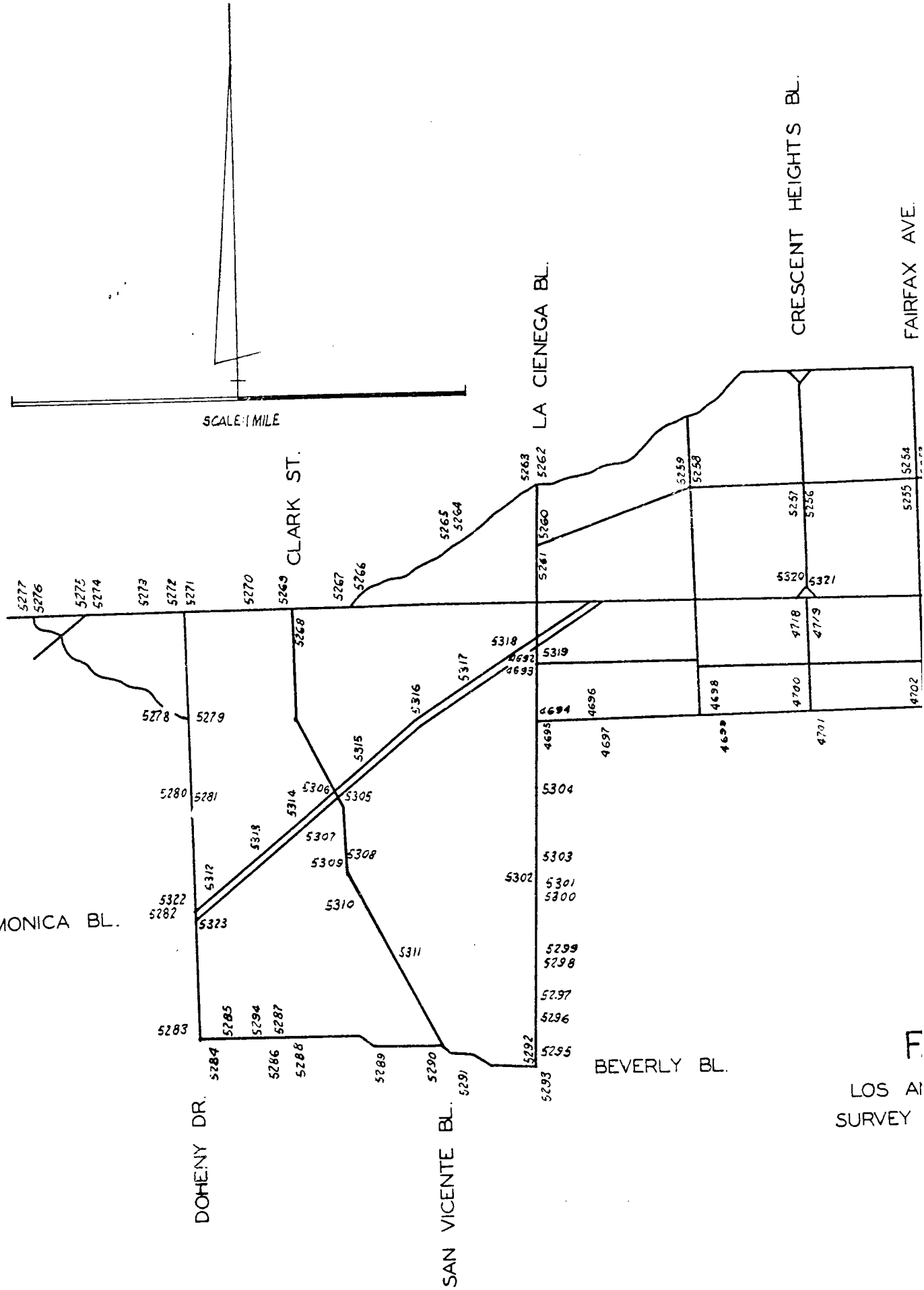
Datum: U.S. Coast and Geodetic Survey Sea Level Datum of 1929, through the medium of the Los Angeles County Engineer Precise Level Net, 1952 Adjustment.

## Abbreviations Used in Bench Mark Listings

ABUT--Abutment	L+BN--Lead and Bench Mark Nail
ANG PT--Angle Point	L+BR--Lead and Brad
BC--Beginning of Curve	L+N--Lead and Nail
BCR--Beginning of Curb Return	L+PK--Lead and PK Nail
BLDG--Building	L+SPK--Lead and Spike
BT SPK--Boat or Bolt Spike	L+T--Lead and Tack
CB RET--Curb Return	MCR--Middle of Curb Return
C/L INT--Center Line Intersection	MKD--Marked
C/L PROD--Center Line Produced	NR--Near
COE--Corps of Engineers	OPP--Opposite
CONC--Concrete	PI--Point of Intersection
CS MON--County Surveyor Monument	PK+W--PK Nail and Washer
CS BR CAP--County Surveyor Brass Cap Monument	P/L--Property Line
CT SPK--Cut Spike	P O S T--Point on Semi-tangent
CTR--Center	PP--Power Pole
DN--Down	PVMT--Pavement
DR--Driveway	R D--Road Department
EC--End of Curve	RDBM--Road Department Bench Mark
ENT--Entrance	RR--Railroad
FC--Flood Control (Dept. LA County)	SPK T+W--Spike, Tin and Washer
FTG--Footing	USC+GS--United States Coast and Geodetic Survey
HDWL--Headwall	USGS--United States Geological Survey
HSE--House	WK--Walk
IP--Iron Pipe	±--Plus or Minus
LACE--Los Angeles City Engineer	+--And



SANTA MONICA BL.



CLARK ST.

DOHENY DR.

SAN VICENTE BL.

BEVERLY BL.

LA CIENEGA BL.

CRESCENT HEIGHTS BL.

FAIRFAX AVE.

LOS ANGELES SURVEY

QUAD-YEAR	ELEV	DESCRIPTION (INCLUDE QUAD AND YEAR IN DESCRIPTION)	BM NUMBER
FAIRFAX (1960)	227.781	STD SUR MON IN WELL 12IN DN C/L LA CIENEGA BLVD + 66FT# N C/L ROMAINE ST	SY 4692
FAIRFAX (1960)	222.597	USC+GS DIS IN CONC 10FT# E OF E CB LA CIENEGA BLVD + 15FT# S OF S CB ROMAINE ST MKD (N 775)	SY 4693
FAIRFAX (1960)	203.432	FLAT HD SPK E CB 6FT# N BCR 33FT# E C/L LA CIENEGA BLVD + 35FT# N C/L WILLOUGHBY AVE	SY 4694
FAIRFAX (1960)	202.671	WIRE SPK S CB 15FT# E BCR 15FT# S C/L WILLOUGHBY AVE + 60FT# E C/L LA CIENEGA BLVD	SY 4695
FAIRFAX (1960)	213.105	L+T W CB 4FT# N BCR 24FT# N C/L WILLOUGHBY AVE + 18FT# W C/L ORLANDO AVE	SY 4696
FAIRFAX (1960)	212.281	WIRE SPK 4FT# S BCR 21FT# E C/L ORLANDO AVE + 30FT# S C/L WILLOUGHBY AVE	SY 4697
FAIRFAX (1960)	229.743	WIRE SPK N CB 7FT# E BCR 21FT# N C/L WILLOUGHBY AVE + 33FT# E C/L HARPER AVE	SY 4698
FAIRFAX (1960)	233.477	L+T S CB 1FT# W BCR 30FT# W C/L LA JOLLA AVE + 15FT# S C/L WILLOUGHBY AVE	SY 4699
FAIRFAX (1960)	237.771	WIRE SPK E CB 2FT# S BCR 27FT# S C/L WILLOUGHBY AVE + 20FT# E C/L CRESCENT HEIGHTS BLVD	SY 4700
FAIRFAX (1960)	238.343	L+BN S CB 24FT# E BCR 15FT# S C/L WILLOUGHBY AVE + 50FT# E C/L CRESCENT HEIGHTS BLVD	SY 4701
FAIRFAX (1960)	254.988	WIRE SPK E CB 1FT# N BCR 25FT# E C/L FAIRFAX AVE + 26FT# N C/L WILLOUGHBY AVE	SY 4702
FAIRFAX (1960)	253.859	L+T E CB 1FT# N BCR 25FT# E C/L FAIRFAX AVE + 25FT# S C/L WILLOUGHBY AVE	SY 4703
FAIRFAX (1960)	258.483	L+T W CB 6FT N BCR 30FT# N C/L WILLOUGHBY AVE + 15FT# W C/L GENESEE AVE	SY 4704
FAIRFAX (1960)	258.727	L+T E CB GENESEE AVE 12FT# N BCR @ NE COR WILLOUGHBY AVE	SY 4705
FAIRFAX (1960)	260.354	L+T W CB 1FT S BCR 25FT# S C/L WILLOUGHBY AVE + 15FT# W C/L SIERRA BONITA AVE	SY 4706
FAIRFAX (1960)	261.193	WIRE SPK N CB 6FT# E BCR 15FT# N C/L WILLOUGHBY AVE +33FT# E C/L SIERRA BONITA AVE	SY 4707
FAIRFAX (1960)	258.382	WIRE SPK W CB 6FT# N BCR 15FT# W C/L MARTEL AVE + 30FT# N C/L WILLOUGHBY AVE	SY 4708
FAIRFAX (1960)	257.246	WIRE SPK E CB 4FT# S BCR 35FT# S C/L WILLOUGHBY AVE + 15FT# E C/L MARTEL AVE	SY 4709
FAIRFAX (1960)	268.675	WIRE SPK W CB LA BREA AVE 4FT# N OF N P/I WILLOUGHBY AVE	SY 4710
FAIRFAX (1960)	269.171	WIRE SPK E CB LA BREA AVE 5FT# N OF N P/I WILLOUGHBY AVE @ S END CATCH BASIN	SY 4711
FAIRFAX (1960)	272.747	WIRE SPK W CB MARTEL AVE C/L PROD ROMAINE ST FROM THE E	SY 4712
FAIRFAX (1960)	270.352	WIRE SPK N CB 4FT# E BCR 15FT# N C/L ROMAINE ST + 45FT# E C/L FULLER AVE	SY 4713
FAIRFAX (1960)	283.325	CUT SPK W CB FULLER AVE 18FT# N OF N P/L SANTA MONICA BLVE @ S END CATCH BASIN	SY 4714

QUAD-YEAR	ELEV	DESCRIPTION (INCLUDE QUAD AND YEAR IN DESCRIPTION)	BM NUMBER
FAIRFAX (1960)	281.601	L+T S CB 10FT# E BCR 40FT# E C/L FULLER AVE + 30FT# S C/L SANTA MONICA BLVD	SY 4715
FAIRFAX (1960)	281.233	CUT SPK E CB POINSETTIA DR @ S END CATCH BASIN 4FT# N BCR @ SANTA MONICA BLVD	SY 4716
FAIRFAX (1960)	279.566	STD SUR MON IN WELL 14IN DN C/L POINSETTIA DR 20FT# N C/L SANTA MONICA BLVD	SY 4717
FAIRFAX (1960)	277.021	CHIS X E RIM TEL MH 4FT# S OF S CB SANTA MONICA BLVD + 6FT# E OF E P/L HAVENHURST DR	SY 4718
FAIRFAX (1960)	281.621	CUT SPK N CB SANTA MONICA BLVD 13FT# W OF W BCR CRESCENT HEIGHTS BLVD E ROADWAY @ W END CULV OUTLET	SY 4719
FAIRFAX (1960)	309.866	STD TRAVERSE MON C/L LA BREA AVE 4FT# N C/L FOUNTAIN AVE MKD (HWD G1C)	SY 5243
FAIRFAX (1960)	311.101	RDBM TAG E CB ALTA VISTA BLVD 80FT# N + 20FT# E C/L INT ALTA VISTA BLVD + FOUNTAIN AVE	SY 5245
FAIRFAX (1960)	311.461	RDBM TAG W CB ALTA VISTA BLVD 95FT# N + 20FT# W C/L INT ALTA VISTA BLVD + FOUNTAIN AVE	SY 5246
FAIRFAX (1960)	312.242	RDBM TAG E CB VISTA ST 15FT# E + 100FT# S C/L INT VISTA ST + FOUNTAIN AVE	SY 5247
FAIRFAX (1960)	318.375	RDBM TAG W CB VISTA ST 16FT# W + 100FT N C/L INT VISTA ST + FOUNTAIN AVE	SY 5248
FAIRFAX (1960)	329.714	RDBM TAG E CB CURSON AVE 14FT# E + 150FT N C/L INT CURSON AVE + FOUNTAIN AVE	SY 5249
FAIRFAX (1960)	329.726	RDBM TAG W CB CURSON AVE 14FT# W + 150FT# N C/L INT CURSON AVE + FOUNTAIN AVE	SY 5250
FAIRFAX (1960)	335.512	RDBM TAG W CB GENESEE AVE 16FT# W + 125FT# N C/L INT GENESEE AVE + FOUNTAIN AVE	SY 5251
FAIRFAX (1960)	329.182	RDBM TAG W CB GENESEE AVE 15FT# W + 110FT# S C/L INT GENESEE AVE + FOUNTAIN AVE	SY 5252
FAIRFAX (1960)	338.557	WIRE SPK E CB FAIRFAX AVE 5FT# N OF N P/L FOUNTAIN AVE @ S END CATCH BASIN	SY 5253
FAIRFAX (1960)	344.025	RDBM TAG W CB 18FT# W C/L FAIRFAX AVE + 120FT# N C/L FOUNTAIN AVE	SY 5254
FAIRFAX (1960)	334.563	RDBM TAG W CB 18FT# W C/L FAIRFAX AVE + 80FT# S C/L FOUNTAIN AVE	SY 5255
FAIRFAX (1960)	339.836	RDBM TAG E CB 32FT# E C/L CRESCENT HEIGHTS BLVD + 83FT# S C/L FOUNTAIN AVE	SY 5256
FAIRFAX (1960)	340.529	RDBM TAG W CB 32FT# W C/L CRESCENT HEIGHTS BLVD + 65FT# S C/L FOUNTAIN AVE	SY 5257
FAIRFAX (1960)	316.965	RDBM TAG S END CATCH BASIN NE COR FOUNTAIN AVE + SWEETZER AVE 50FT# N + 15FT# E C/L INT	SY 5258
FAIRFAX (1960)	315.181	WIRE SPK NW CB RET @ FOUNTAIN AVE + SWEETZER AVE 28FT# W + 30FT# N C/L INT MKD (MW 102)	SY 5259
FAIRFAX (1960)	322.430	RDBM TAG E CB 20FT# N BCR @ NE COR LA CIENEGA BLVD + FOUNTAIN AVE 62FT# N + 20FT# E C/L INT	SY 5260
FAIRFAX (1960)	310.429	RDBM TAG E CB 12FT# S BCR @ SE COR LA CIENEGA BLVD + FOUNTAIN AVE 90FT# S + 24FT# E C/L INT	SY 5261

QUAD-YEAR	ELEV	DESCRIPTION (INCLUDE QUAD AND YEAR IN DESCRIPTION)	BM NUMBER
FAIRFAX (1960)	409.735	CUT SPK S CB @ E END CATCH BASIN 2FT# W BCR @ SW COR SUNSET BLVD + MILLER DR	SY 5263
FAIRFAX (1960)	381.873	CUT SPK CB RET @ E END CATCH BASIN NE COR SUNSET BLVD + SUNSET PLAZA DR	SY 5264
FAIRFAX (1960)	384.856	WIRE SPK W CB @ N END CATCH BASIN 30FT# W C/L SUNSET PLAZA DR + 100FT# N C/L SUNSET BLVD	SY 5265
FAIRFAX (1960)	360.277	CUT SPK N CB SUNSET BLVD 33FT# E OF E CB SHERBOURNE DR @ W END CATCH BASIN	SY 5266
FAIRFAX (1960)	343.242	CUT SPK N CB SUNSET BLVD 27FT# W OF W CB HORN AVE @ E END CATCH BASIN	SY 5267
FAIRFAX (1960)	357.674	L+BN S CB 1FT# E BCR @ SE COR SUNSET BLVD + CLARK ST 35FT# S + 35FT# E C/L INT MKD (BM)	SY 5268
FAIRFAX (1960)	360.913	L+FLAT HD SPK NR CTR OF NW CB RET SUNSET BLVD + CLARK ST 38FT# N + 6FT# W C/L INT MKD (BM MW 38)	SY 5269
FAIRFAX (1960)	376.232	WIRE SPK E CB HILLDALE AVE 25FT# N OF N CB SUNSET BLVD @ S END CATCH BASIN	SY 5270
FAIRFAX (1960)	411.247	CUT SPK W CB DOHENY DR 60FT# N OF N P/L SUNSET BLVD @ S END CATCH BASIN	SY 5271
FAIRFAX (1960)	406.578	CUT SPK N CB 5FT# W BCR @ NW COR SUNSET BLVD + DOHENY DR 47FT# W + 35FT# N C/L INT MKD (BM)	SY 5272
FAIRFAX (1960)	415.161	CUT SPK N CB DOHENY RD 90FT# W OF NW CB LINE PROD SUNSET BLVD @ E END CATCH BASIN	SY 5273
FAIRFAX (1960)	455.846	L+BR NR CTR CURVE @ SW COR DOHENY RD + SIERRA PL 33FT# S + 35FT# W C/L INT MKD (BM)	SY 5274
FAIRFAX (1960)	457.192	RDBM TAG N CB DOHENY RD 20FT# N C/L + 9FT# W C/L PROD SIERRA PL	SY 5275
FAIRFAX (1960)	399.368	CUTSPK NW CB SUNSET BLVD 150FT# NE OF NE P/L SIERRA DR @ SW END CATCH BASIN	SY 5276
FAIRFAX (1960)	396.847	L+N 1FT# E BCR @ SE COR SUNSET BLVD + SIERRA DR 40FT# S + 145FT# E C/L INT	SY 5277
FAIRFAX (1960)	313.095	ROUND HD SPK W CB 5FT# N BCR @ NW COR CYNTHIA ST + DOHENY DR 25FT# W + 70FT# N C/L INT MKD (MW 46)	SY 5278
FAIRFAX (1960)	310.561	L+T E CB 6FT# N BCR @ NE COR DOHENY DR + CYNTHIA ST 25FT# E + 35FT# N C/L INT	SY 5279
FAIRFAX (1960)	254.045	CS MON IN WELL 10IN DN @ C/L INT DOHENY DR + LLOYD PL (USE W EDGE)	SY 5280
FAIRFAX (1960)	253.641	WIRE SPK E CB 1FT S BCR @ SE COR DOHENY DR + LLOYD PL 25FT# E + 25FT# S C/L INT MKD (MW 51)	SY 5281
FAIRFAX (1960)	228.980	USC+GS DISC FLUSH 3FT# N OF N CB SANTA MONICA BLVD + 18FT# W OF W CB SIERRA DR MKD (S773 1945)	SY 5282
FAIRFAX (1960)	208.636	WIRE SPK W CB DOHENY DR 10FT# N OF N P/L BEVERLY BLVD @ CTR CATCH BASIN	SY 5283



QUAD-YEAR	ELEV	DESCRIPTION (INCLUDE QUAD AND YEAR IN DESCRIPTION)	BM NUMBER
FAIRFAX (1960)	199.443	SPK + W CONC EXP JOINT SE COR WETHERLY DR + BEVERLY BLVD 70FT± S C/L + 10FT± S BCR	SY 5284
FAIRFAX (1960)	193.842	WIRE SPK N CB BEVERLY BLVD 14FT± W OF W P/L ALMCNT DR @ E END CATCH BASIN	SY 5285
FAIRFAX (1960)	185.285	WIRE SPK S CB BEVERLY BLVD 17FT± W OF W P/L SWALL DR @ E END CATCH BASIN	SY 5286
FAIRFAX (1960)	181.854	LACE MON IN WELL 8IN DN C/L BEVERLY BLVD + 143FT± E C/L SWALL DR	SY 5288
FAIRFAX (1960)	168.230	LACE MON IN WELL 8IN DN C/L BEVERLY BLVD + 250FT± W OF W CB SAN VICENTE BLVD	SY 5289
FAIRFAX (1960)	167.670	WIRE SPK N CB 4FT± W BCR @ NW COR SAN VICENTE BLVD + BEVERLY BLVD 36FT± N + 78FT± W C/L INT MKD (BM)	SY 5290
FAIRFAX (1960)	163.707	CUT SPK @ SE COR CATCH BASIN 4FT± E OF E CB HUNTLEY DR 3FT± N OF N P/L BEVERLY PL	SY 5291
FAIRFAX (1960)	163.008	WIRE SPK N CB BEVERLY BLVD 18FT± E OF E P/L LA CIENEGA BLVD 1FT± W OF CATCH BASIN	SY 5292
FAIRFAX (1960)	161.754	MON IN WELL 10IN DN @ C/L INT BEVERLY BLVD + LA CIENEGA BLVD	SY 5293
FAIRFAX (1960)	189.411	L+T CONC WK 48FT± N C/L BEVERLY BLVD C/L PROD LA PEER DR	SY 5294
FAIRFAX (1960)	161.019	USC+GS DISC CONC POST 165FT S OF S CB BEVERLY BLVD + 1FT± W OF W CB LA CIENEGA BLVD	SY 5295
FAIRFAX (1960)	165.815	MON FLUSH 1FT± E OF E CB LA CIENEGA BLVD + 419FT± N OF N CB BEVERLY BLVD	SY 5296
FAIRFAX (1960)	168.572	CUT SPK SE COR CATCH BASIN 4FT± E OF E CB LA CIENEGA BLVD 5FT± N OF N P/L OAKWOOD ST	SY 5297
FAIRFAX (1960)	174.384	WIRE SPK S CB ROSEWOOD AVE 5FT± E OF E P/L LA CIENEGA BLVD @ E END CATCH BASIN	SY 5298
FAIRFAX (1960)	173.192	CS MON IN WELL 15IN DN C/L LA CIENEGA BLVD 10FT± S C/L ROSEWOOD AVE E	SY 5299
FAIRFAX (1960)	176.415	USC+GS MON FLUSH 1FT± W O W CB LA CIENEGA BLVD + 250FT± S OF S CB MELROSE AVE	SY 5300
FAIRFAX (1960)	180.100	WIRE SPK N CB @ W END CATCH BASIN @ BCR @ NE COR MELROSE AVE + LA CIENEGA BLVD	SY 5301
FAIRFAX (1960)	185.508	CS MON WELL 18IN DN C/L INT LA CIENEGA BLVD + MELROSE PL	SY 5302
FAIRFAX (1960)	186.918	CUT SPK @ NW COR CATCH BASIN 4FT± N OF N CB MELROSE PL + 3FT± E OF E P/L LA CIENEGA BLVD	SY 5303
FAIRFAX (1960)	193.106	WIRE SPK E CB LA CIENEGA BLVD 9FT± N OF N P/L WARING AVE @ S END CATCH BASIN	SY 5304
FAIRFAX (1960)	224.460	USC+GS DISC 2FT± N OF N CB SANTA MONICA BLVD + 13FT± W OF W CB NEMO ST MKD (T 733 1945)	SY 5312
FAIRFAX (1960)	224.582	USC+GS DISC CONC POST 2FT± N OF N CB SANTA MONICA BLVD 271FT± W OF W CB ROBERTSON BLVD MKD (U 7331945)	SY 5313

QUAD-YEAR	ELEV	DESCRIPTION (INCLUDE QUAD AND YEAR IN DESCRIPTION)	BM NUMBER
FAIRFAX (1960)	221.206	CUT SPK N CB SANTA MONICA BLVD 11FT# W OF W P/L HILDALE AVE @ E END CATCH BASIN	SY 5314
FAIRFAX (1960)	211.424	SQ HD SPK N CB 1FT# E BCR @ NE COR SANTA MONICA BLVD + PALM AVE 20FT# N C/L N BARREL + 56FT# E C/L INT MKD (BM MW 83)	SY 5315
FAIRFAX (1960)	210.393	WIRE SPK N CB 3FT# E BCR @ NE COR SANTA MONICA BLVD + HANCOCK AVE 20FT# N C/L N BARREL + 45FT# E C/L INT MKD (MW 100)	SY 5316
FAIRFAX (1960)	225.420	RAM SET N CB 3FT# E BCR @ NE COR SANTA MONICA BLVD + WESTMONT DR 20FT# N C/L N BARREL + 35FT# E C/L INT	SY 5317
FAIRFAX (1960)	242.003	CUT SPK W CB LA CIENEGA BLVD 61FT# N OF SANTA MONICA BLVD @ N END CATCH BASIN	SY 5318
FAIRFAX (1960)	225.990	CUT SPK E CB LA CIENEGA BLVD 21FT# N OF N CB ROMAINE ST @ S END CATCH BASIN	SY 5319
FAIRFAX (1960)	295.197	WIRE SPK W CB 4FT# S BCR @ SW COR CRESCENT HEIGHTS BLVD + NORTON AVE 35FT# S + 33FT# W C/L INT	SY 5320
FAIRFAX (1960)	295.340	WIRE SPK E CB 7FT# S BCR @ SE COR CRESCENT HEIGHTS BLVD + NORTON AVE 35FT# S + 35FT# E C/L INT	SY 5321
FAIRFAX (1960)	226.591	CUT SPK N CB SANTA MONICA BLVD MIDWAY BETWEEN DOHENY DR + OAKHURST DR @ E END CATCH BASIN	SY 5322
FAIRFAX (1960)	225.778	CS MON IN WELL 12IN DN 3FT# E C/L DOHENY DR + 20FT# N C/L N BARREL SANTA MONICA BLVD (USE W EDGE)	SY 5323