

COUNTY OF LOS ANGELES

ROAD DEPARTMENT



GARDENA QUAD

BENCH MARKS

1960

PREFACE

The Road Department level net is composed of some 1,000 miles of levels supporting more than 10,000 bench marks. In 1955, a major re-adjustment of the net was undertaken resulting in revised bench mark elevations of which the accompanying list is a part.

To facilitate the adjustment, indexing, and distribution of adjusted values of the net, the county territory was divided into 30 quads or areas. For identification purposes each quad was given a name, viz., "Rosemead", "La Mirada", "Santa Fe", etc. When bench marks and elevations in the Road Dept. net are used, the name of the quad in which the bench mark is located and the date of the adjustment of the elevation must be included in the bench mark description, e.g.,

SG 908 - L & T in E. cb. Muscatel Ave. on C/L prod.
Scott St. (Rosemead - 1955) Elev. 333.517

It is expected that this general adjustment will, for the most part, remain sound for the next 15 or 20 years. As new circuits are completed, however, re-adjustment of individual quads may become advisable. It is expected that these subsequent adjustments will be in the nature of a few hundredths of a foot. When a quad is re-adjusted, new elevation lists will be published and the date of the re-adjustment will replace the "1955" at the end of the bench mark description. Two bench marks in the same quad with different adjustment dates will not normally join each other. Since all adjustments taper out to nothing at the periphery of the quad, any bench mark in one quad will join any bench mark in another quad regardless of their respective adjustment dates.

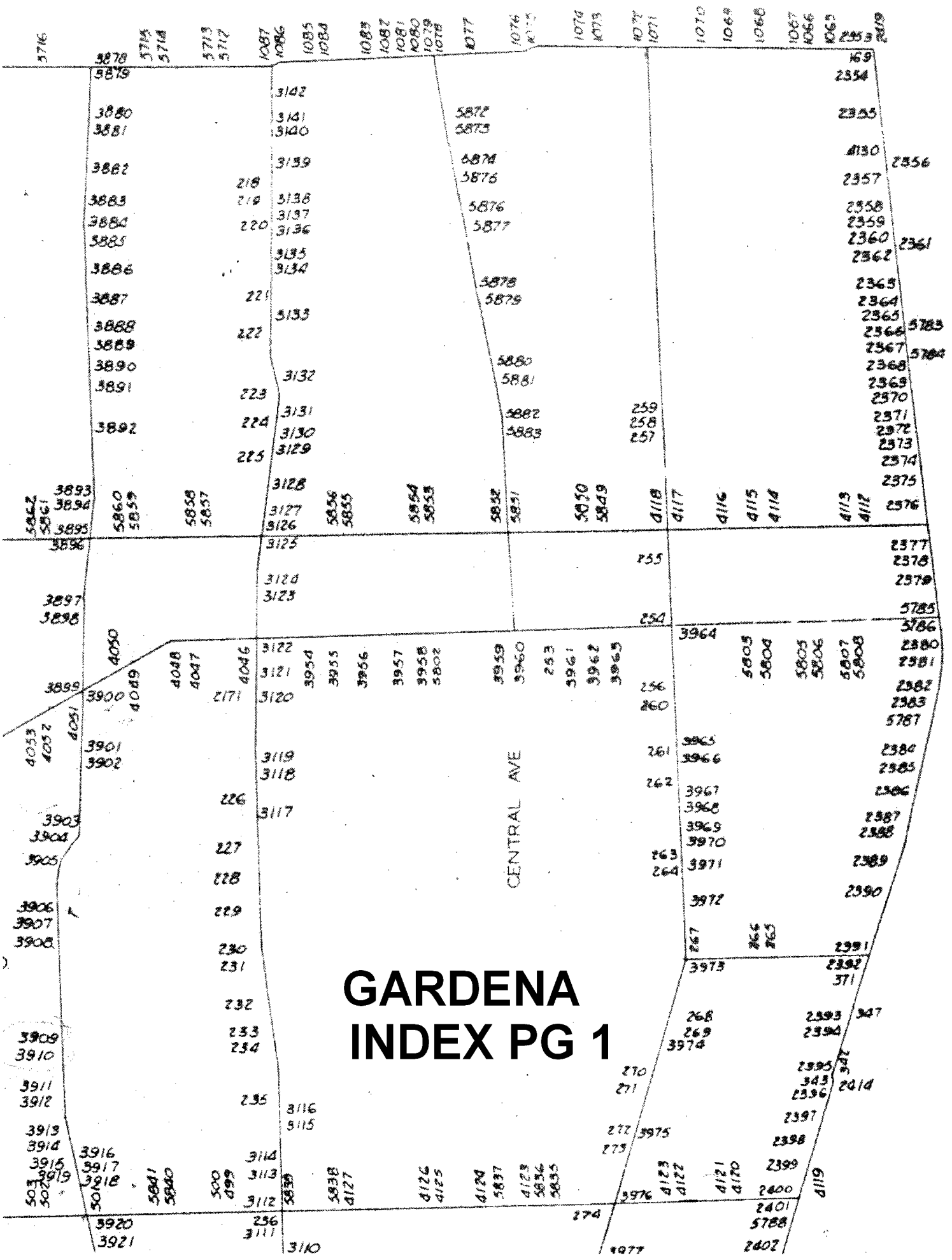
The basic accuracy of the net is reflected by an indicated field probable error of ± 0.12 foot per mile of leveling as determined from 298 conditions of closure. However, many years experience in vertical control in the greater Los Angeles basin & Antelope Valley indicate that because of varying degrees of subsidence and heaving, the true datum is recovered only by obtaining substantial agreement of a number of bench marks.

The users of this net are invited to assist in its maintenance by notifying this Department of cases of obliteration, apparent mistakes in descriptions or elevations, and proven disturbance of bench marks.

Datum: U.S. Coast and Geodetic Survey Sea Level Datum of 1929, through the medium of the Los Angeles County Engineer Precise Level Net, 1952 Adjustment.

Abbreviations Used in Bench Mark Listings

ABUT--Abutment	L+BN--Lead and Bench Mark Nail
ANG PT--Angle Point	L+BR--Lead and Brad
BC--Beginning of Curve	L+N--Lead and Nail
BCR--Beginning of Curb Return	L+PK--Lead and PK Nail
BLDG--Building	L+SPK--Lead and Spike
BT SPK--Boat or Bolt Spike	L+T--Lead and Tack
CB RET--Curb Return	MCR--Middle of Curb Return
C/L INT--Center Line Intersection	MKD--Marked
C/L PROD--Center Line Produced	NR--Near
COE--Corps of Engineers	OPP--Opposite
CONC--Concrete	PI--Point of Intersection
CS MON--County Surveyor Monument	PK+W--PK Nail and Washer
CS BR CAP--County Surveyor Brass Cap Monument	P/L--Property Line
CT SPK--Cut Spike	P O S T--Point on Semi-tangent
CTR--Center	PP--Power Pole
DN--Down	PVMT--Pavement
DR--Driveway	R D--Road Department
EC--End of Curve	RDBM--Road Department Bench Mark
ENT--Entrance	RR--Railroad
FC--Flood Control (Dept. LA County)	SPK T+W--Spike, Tin and Washer
FTG--Footing	USC+GS--United States Coast and Geodetic Survey
HDWL--Headwall	USGS--United States Geological Survey
HSE--House	WK--Walk
IP--Iron Pipe	±--Plus or Minus
LACE--Los Angeles City Engineer	+--And



GARDENA INDEX PG 1

(This area contains a grid of street names and house numbers from the map.)

1076
1077
1078
1079
1080
1081
1082
1083
1084
1085
1086
1087
1069
1068
1067
1066
1065
2353
2349

3142
3141
3140
3139
3138
3137
3136
3135
3134
3133
3132
3131
3130
3129
3128
3127
3126
3125
3124
3123
3122
3121
3120
3119
3118
3117
3116
3115
3114
3113
3112
3111
3110

5872
5873
5874
5876
5877
5878
5879
5880
5881
5882
5883
5884
5885
5886
5887
5888
5889
5890
5891
5892
5893
5894
5895
5896
5897
5898
5899
5900
5901
5902
5903
5904
5905
5906
5907
5908
5909
5910
5911
5912
5913
5914
5915
5916
5917
5918
5919
5920
5921

2554
2355
4130
2357
2358
2359
2360
2362
2363
2364
2365
2366
2367
2368
2369
2370
2371
2372
2373
2374
2375
2376
2377
2378
2379
2380
2381
2382
2383
2384
2385
2386
2387
2388
2389
2390
2391
2392
2393
2394
2395
2396
2397
2398
2399
2400
2401
2402

2856
2857
2858
2861
2862
2863
2864
2865
2866
2867
2868
2869
2870
2871
2872
2873
2874
2875
2876
2877
2878
2879
2880
2881
2882
2883
2884
2885
2886
2887
2888
2889
2890
2891
2892
2893
2894
2895
2896
2897
2898
2899
2900
2901
2902
2903
2904
2905
2906
2907
2908
2909
2910
2911
2912
2913
2914

CENTRAL AVE

5052
5051
5050
5049
5048
5047
5046
5045
5044
5043
5042
5041
5040
5039
5038
5037
5036
5035
5034
5033
5032
5031
5030
5029
5028
5027
5026
5025
5024
5023
5022
5021
5020
5019
5018
5017
5016
5015
5014
5013
5012
5011
5010
5009
5008
5007
5006
5005
5004
5003
5002
5001

GARDENA INDEX PG 2

ROSECRANS AVE

REDONDO BEACH BLVD

ARTESIA BLVD

VICTORIA ST

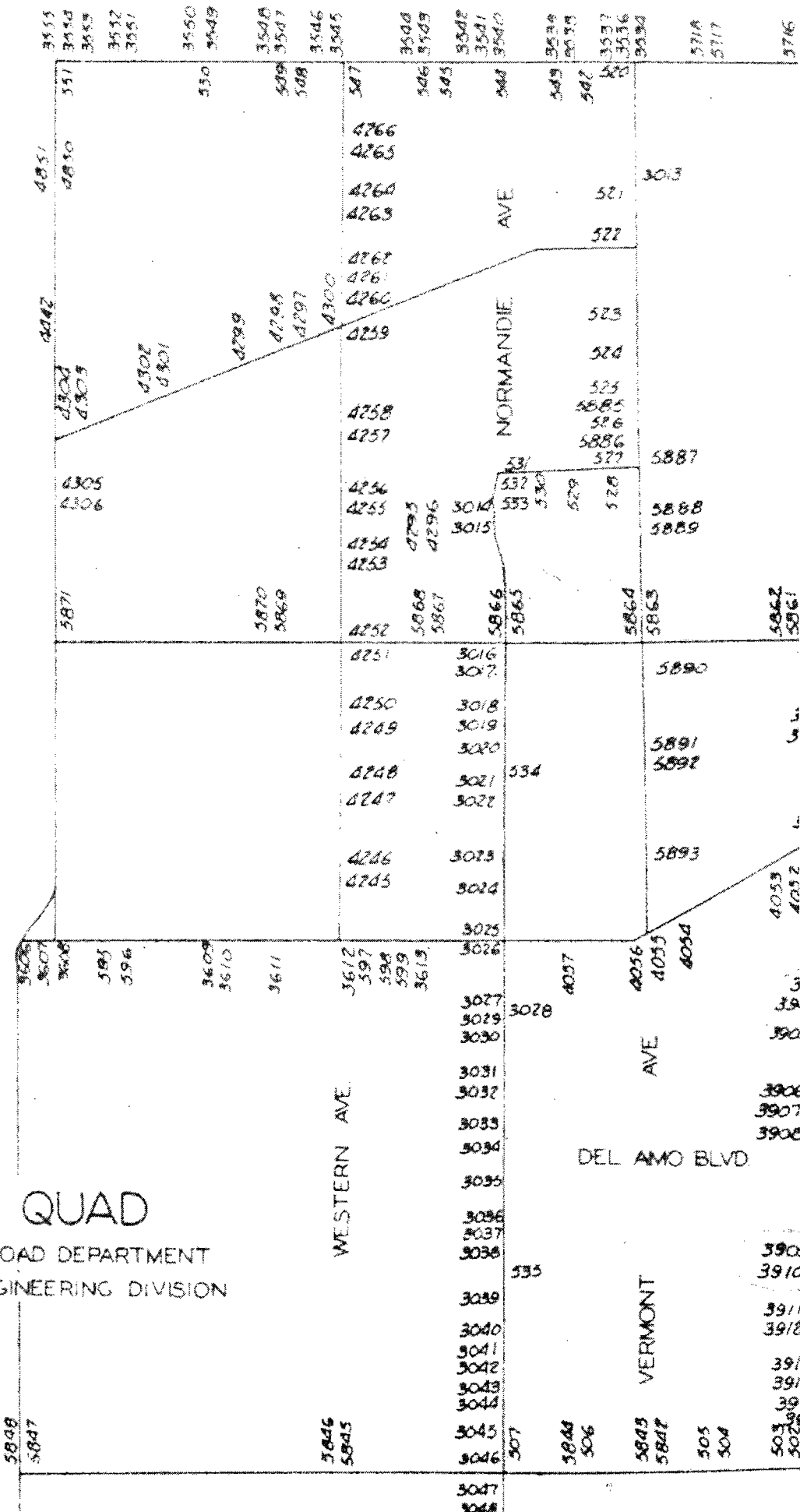
190TH ST

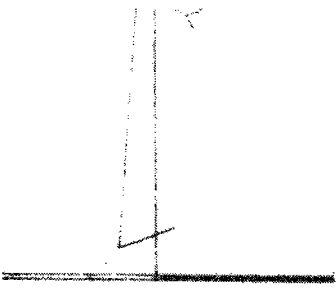
SCALE - 1 MILE

GARDENA QUAD

LOS ANGELES COUNTY ROAD DEPARTMENT
SURVEY SECTION FIELD ENGINEERING DIVISION

CARSON ST.

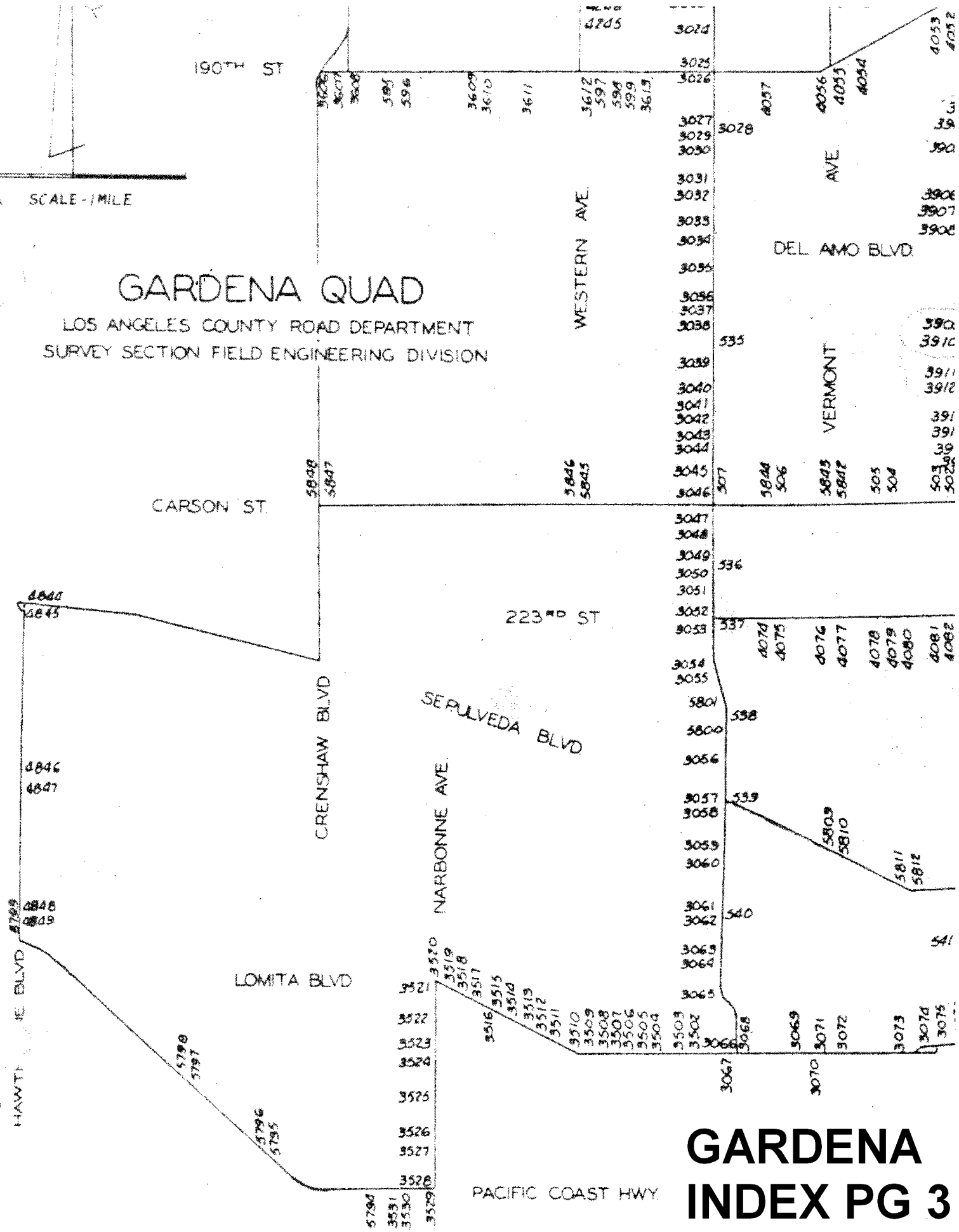




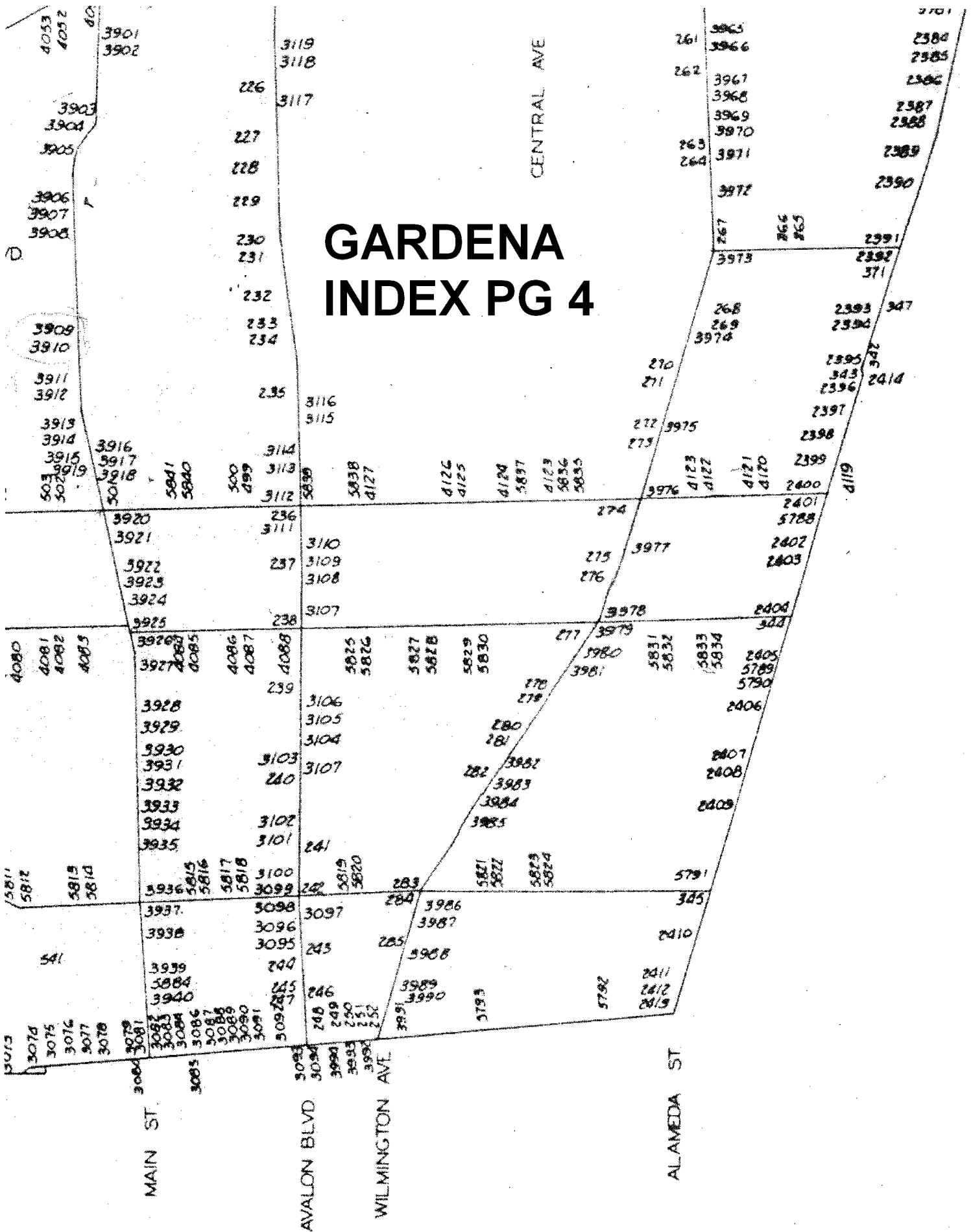
SCALE - 1 MILE

GARDENA QUAD

LOS ANGELES COUNTY ROAD DEPARTMENT
SURVEY SECTION FIELD ENGINEERING DIVISION



GARDENA INDEX PG 4



JUL 1964

LOS ANGELES COUNTY ROAD DEPARTMENT
SURVEY SECTION FIELD ENGINEERING DIVISION

PAGE 1

QUAD-YEAR	ELEV	DESCRIPTION (INCLUDE QUAD AND YEAR IN DESCRIPTION)	BM NUMBER
BASELINE (1955)	72.324	L+T E CB ALAMEDA ST 50FT± N C/L ROSECRANS BLVD	SY 169A
GARDENA (1960)	88.245	L+T NW STRADDLER C/L INT COMPTON BLVD + AVALON BLVD	SY 218A
GARDENA (1960)	74.287	L+T C/L 154TH ST 14FT± W C/L PVMT AVALON BLVD	SY 220
GARDENA (1960)	54.130	^{CSBM} L+T MON IN WELL 10IN DN @ PI AVALON BLVD C/L 165TH ST	SY 223A
GARDENA (1960)	48.862	L+T N COR TOWER NO 38 AVALON BLVD 1ST TOWER S OF 165TH ST	SY 224
GARDENA (1960)	50.626	CS MON IN WELL 8IN DN 15FT± W CTR TOWER NO 39 ON AVALON BLVD N ARTESIA BLVD MKD (BM 23-3)	SY 225A
GARDENA (1960)	19.789	CUT SPK NR E EDGE OF W CONC PVMT AVALON BLVD 300FT± S C/L 185TH ST	SY 226
GARDENA (1960)	15.491	BT SPK CONC BASE @ SW COR TOWER NO 50 C/L AVALON BLVD 7TH TOWER S VICTORIA ST	SY 227
GARDENA (1960)	13.153	L+N CONC BASE @ NE COR TOWER NO 51 C/L AVALON BLVD 8TH TOWER S OF VICTORIA ST	SY 228
GARDENA (1960)	11.607	L+SPK NR E EDGE PVMT AVALON BLVD 17FT± W CTR TOWER NO 52 9TH TOWER S OF VICTORIA ST	SY 229
GARDENA (1960)	OUT 11.575	L+N CONC BASE @ SW COR TOWER NO 53 ON C/L AVALON BLVD 10TH TOWER S OF VICTORIA ST	SY 230
GARDENA (1960)	13.399	L+SCREW CONC BASE @ NE COR TOWER NO 54 C/L AVALON BLVD 11TH TOWER S OF VICTORIA ST	SY 231A
GARDENA (1960)	11.769	L+T CONC BASE @ NE COR TOWER NO 55 C/L AVALON BLVD 12TH TOWER S OF VICTORIA ST	SY 232
GARDENA (1960)	12.097	FC BR CAP CONC WALL N SIDE OF TOWER NO 56 @ C/L AVALON BLVD 13TH TOWER S OF VICTORIA ST	SY 233
GARDENA (1960)	15.804	R D MON W CB 3FT± N C/L BRIDGE NO B-643 AVALON BLVD OVER DOMINGUEZ CHANNEL	SY 234
GARDENA (1960)	14.483	SE L+T STRADDLER @ INT 213TH ST + AVALON BLVD	SY 235
GARDENA (1960)	20.078	SE L+T STRADDLER @ INT CARSON ST + AVALON BLVD	SY 236
GARDENA (1960)	26.379	SE L+T STRADDLER @ C/L INT AVALON BLVD + 220TH ST	SY 237
GARDENA (1960)	29.129	SE L+T STRADDLER @ C/L INT AVALON BLVD + 223RD ST	SY 238
GARDENA (1960)	33.973	SPK PVMT 13FT± W C/L AVALON BLVD 1000FT± S 223RD ST 200FT± N ANGLE PT AVALON BLVD	SY 239
GARDENA (1960)	36.607	L+T 1FT± E SIDE ISLAND S OF S BCR @ BAYPORT ST + AVALON BLVD	SY 240
GARDENA (1960)	38.170	L+T W CB AVALON BLVD 1FT± S BCR @ SW COR IDABEL AVE	SY 241
GARDENA (1960)	41.762	L+N CONC WK 12FT± S C/L SFRR + 27FT± W C/L AVALON BLVD	SY 243
GARDENA (1960)	42.363	L+SPK @ INT 246TH ST E + AVALON BLVD	SY 244

JUL 1964

LOS ANGELES COUNTY ROAD DEPARTMENT
SURVEY SECTION FIELD ENGINEERING DIVISION

PAGE 2

QUAD-YEAR	ELEV	DESCRIPTION (INCLUDE QUAD AND YEAR IN DESCRIPTION)	BM	NUMBER
GARDENA (1960)	42.624	L+SPK @ INT 247TH ST + AVALON BLVD	SY	245
GARDENA (1960)	42.885	L+T @ INT 248TH ST E + AVALON BLVD	SY	246
GARDENA (1960)	43.149	L+SPK @ INT 249TH E ST + AVALON BLVD	SY	247
GARDENA (1960)	44.271	L+SPK 15FT± S OF END OF CB @ SW COR E LOMITA BLVD + AVALON BLVD	SY	248A
GARDENA (1960)	42.639	L+T 12FT± S BCR @ SE COR E LOMITA BLVD + BROAD AVE	SY	249A
BASELINE (1955)	42.889	L+SPK 4FT± N BCR @ NW COR LAKME AVE + LOMITA BLVD E	SY	25CA
BASELINE (1955)	41.373	L+BN 15FT± S BCR @ NE COR BAYPOINT AVE + LOMITA BLVD E	SY	251A
BASELINE (1955)	40.573	L+T 3FT± E OF END OF S CB LOMITA BLVD 17FT± E C/L PROD WILMINGTON AVE	SY	252A
GARDENA (1960)	179.603	L+T 3FT± E OF W CB CPP BLDG NO 1556 VICTORIA ST ON W ENT WK	SY	253
GARDENA (1960)	162.274	L+BN NE COR CONC BASE METER BOXES @ SW COR VICTORIA ST + WILMINGTON AVE	SY	254A
GARDENA (1960)	127.953	L+SPK 19FT± W C/L WILMINGTON AVE 1300FT N C/L VICTORIA ST	SY	255
GARDENA (1960)	180.389	L+BN SE COR CONC FOUNDATION OF ABANDONED OIL WELL 115FT± W C/L WILMINGTON AVE 1300FT± S C/L VICTORIA ST MKD (BM)	SY	256A
GARDENA (1960)	179.591	L+SPK PVMT 19FT± W C/L WILMINGTON AVE 1300FT± S VICTORIA ST	SY	260
GARDENA (1960)	191.652	L+SPK PVMT 19FT± W C/L WILMINGTON AVE 2600FT± S VICTORIA ST	SY	261
GARDENA (1960)	157.486	L+SPK PVMT 19FT± W C/L WILMINGTON AVE 3800FT± S VICTORIA ST	SY	262
GARDENA (1960)	77.215	SPK PVMT 19FT± E C/L WILMINGTON AVE 1890FT± N DEL AMO BLVD	SY	263A
GARDENA (1960)	77.190	SPK PVMT 19FT± W C/L WILMINGTON AVE 1890FT± N DEL AMO BLVD	SY	264A
GARDENA (1960)	31.836	L+BN CONC FOOTING 6FT CHAIN LINK FENCE 50FT± N C/L DEL AMO BLVD + 15FT± W C/L RR SPAR TRACK 1000FT± E WILMINGTON AVE MKD (BM)	SY	265A
GARDENA (1960)	28.325	L+BN E END CB 40FT± N C/L DEL AMO BLVD 800FT± E WILMINGTON AVE	SY	266A
GARDENA (1960)	25.794	SPK PVMT 19FT± W C/L WILMINGTON AVE 1345FT± S DEL AMO BLVD	SY	268
GARDENA (1960)	25.878	SPK PVMT 19FT± E C/L WILMINGTON AVE 1345FT± S DEL AMO BLVD	SY	269
GARDENA (1960)	25.530	L+T 3FT± N BCR @ NW COR WILMINGTON AVE + DOMINGUEZ ST	SY	270A
GARDENA (1960)	25.730	L+T CONC FOOTING SHELL OIL CO SIGN @ NW COR WILMINGTON AVE + DOMINGUEZ ST 45FT N + 60FT W C/L INT MKD (BM)	SY	271A

JUL 1964

LCS ANGELES COUNTY ROAD DEPARTMENT
SURVEY SECTION FIELD ENGINEERING DIVISION

PAGE 3

QUAD-YEAR	ELEV	DESCRIPTION (INCLUDE QUAD AND YEAR IN DESCRIPTION)	BM NUMBER
GARDENA (1960)	23.577	SPK PVMT 19FT# E C/L WILMINGTON AVE OPP C/L INT @ 213TH ST	SY 272
GARDENA (1960)	23.549	SPK PVMT 19FT# W C/L WILMINGTON AVE OPP C/L INT @ 213TH ST	SY 273
GARDENA (1960)	24.839	L+BN N SIDE CONC BASE OF SIGNAL @ SW COR CARSON ST + WILMINGTON AVE	SY 274A
GARDENA (1960)	21.901	SPK PVMT 19FT# E C/L WILMINGTON AVE OPP C/L INT 220TH ST	SY 275
GARDENA (1960)	21.837	SPK PVMT 19FT# W C/L INT WILMINGTON AVE OPP C/L INT @ 220TH ST	SY 276
GARDENA (1960)	21.744	SPK PVMT 19FT# E C/L WILMINGTON AVE 1415FT# S 223RD ST	SY 278
GARDENA (1960)	21.866	SPK PVMT 19FT# W C/L WILMINGTON AVE 1415FT# S 223RD ST	SY 279
GARDENA (1960)	29.576	SPK PVMT 19FT# E C/L WILMINGTON AVE 2830FT# S 223RD ST	SY 280
GARDENA (1960)	30.187	SPK PVMT 19FT# E C/L WILMINGTON AVE 5FT# N END CONC 3150FT# S 223RD ST	SY 281
GARDENA (1960)	30.302	SPK PVMT 19FT# W C/L WILMINGTON AVE 5FT# N END CONC 3160FT# S 223RD ST	SY 282
GARDENA (1960)	37.619	L+N N CB 65FT# E C/L WILMINGTON AVE ON N CB LINE SEPULVEDA BLVD	SY 283
GARDENA (1960)	37.594	L+N S CB 80FT# E C/L WILMINGTON AVE ON S CB LINE SEPULVEDA BLVD	SY 284
GARDENA (1960)	39.017	L+T S EDGE CONC DRWY HSE NO 24119 35FT# W C/L WILMINGTON AVE	SY 285A
BASELINE (1955)	23.839	L+SPK W CB ALAMEDA BLVD 50FT# N C/L 223RD ST	SY 344A
BASELINE (1955)	19.167	FC MON CONC POST 75FT# N C/L SEPULVEDA BLVD W 28FT# W C/L ALAMEDA BLVD	SY 345
BASELINE (1955)	33.022	L+T E HDWL SPRR CULV NO 497.3 25FT# E C/L MAIN TRACK 68FT# W C/L ALAMEDA ST 1400FT# N DOMINGUEZ ST	SY 347
BASELINE (1955)	36.795	L+T NW COR SP SIGNAL SWITCH BOX NO 4972 35FT# S C/L DEL AMC BLVD + 25FT# E C/L MAIN LINE SPRR	SY 371A
GARDENA (1960)	23.549	BOLT CONC WK 60FT# S C/L CARSON ST 25FT# E C/L GRACE ST	SY 499
GARDENA (1960)	21.829	CS MON IN WELL 10IN DN @ C/L INT CARSON ST + GRACE AVE	SY 500A
GARDENA (1960)	33.141	CUT SPK PVMT 11FT# W C/L MAIN ST 40FT S C/L CARSON ST	SY 501
GARDENA (1960)	37.043	L+BR CONC DRWY HSE ON NE COR CARSON ST + MONETA AVE 52FT# N + 26FT# E C/L INT	SY 502A
GARDENA (1960)	36.447	SPK IN WK 40FT# N C/L CARSON ST 50FT# W C/L MONETA AVE	SY 503
GARDENA (1960)	39.964	SPK IN AUTOMATIC SIGNAL BASE 30FT N C/L CARSON ST 42FT# E C/L FIGUEROA ST	SY 504

QUAD-YEAR	ELEV	DESCRIPTION (INCLUDE QUAD AND YEAR IN DESCRIPTION)	BM NUMBER
GARDENA (1960)	39.229	LACE TRIANGULATION MON IN WELL 14IN DN @ C/L INT CARSON ST + FIGUEROA ST	SY 505A
GARDENA (1960)	41.630	SPK CONC BASE 5FT± W FLAG POLE @ ENT TO HARBOR HOSPITAL ON S SIDE CARSON ST 100FT± E NORMANDIE AVE	SY 506
GARDENA (1960)	46.490	L+N NR N END CB RET NW COR NORMANDIE AVE + CARSON ST	SY 507
GARDENA (1960)	49.128	L+T @ C/L INT VERMONT AVE W PROD + COMPTON BLVD	SY 521
GARDENA (1960)	51.374	CUT SPK @ C/L INT VERMONT AVE W PROD + REDONDO BEACH BLVD	SY 522
GARDENA (1960)	46.322	L+T W CB VERMONT AVE 1FT± S BCR @ SW COR MAGNOLIA AVE	SY 523
GARDENA (1960)	42.823	L+N W CB VERMONT AVE 1FT± S BCR @ SW COR 159TH ST	SY 524
GARDENA (1960)	40.636	L+N S CB VERMONT AVE 1FT± N BCR @ NW COR 161ST ST	SY 525
GARDENA (1960)	37.672	L+N W CB 164TH ST 5FT± W BCR @ NW COR BERENDO AVE	SY 528
GARDENA (1960)	38.474	L+N N CB 164TH ST 5FT± E BCR @ NE COR BUDLONG AVE	SY 529
GARDENA (1960)	37.324	L+N S CB 164TH ST 2FT± W BCR @ SW COR RAYMOND AVE	SY 530
GARDENA (1960)	35.661	CUT SPK CTR CB RET @ NE COR NORMANDIE AVE + GARDENA BLVD	SY 532
GARDENA (1960)	34.752	L+N W CB NORMANDIE AVE 5FT± S BCR @ SW COR 166TH ST	SY 533
GARDENA (1960)	43.865	L+T W CB NORMANDIE AVE C/L PROD 223RD ST	SY 534
GARDENA (1960)	38.789	L+T NR S END CB RET @ SW COR NORMANDIE AVE + EAST RD OR 208TH ST	SY 535
GARDENA (1960)	44.395	L+T 2FT N OF S END CB W SIDE NORMANDIE AVE ON N SIDE 220TH ST	SY 536
GARDENA (1960)	45.930	L+T W CB NORMANDIE AVE C/L PROD 223RD ST	SY 537
GARDENA (1960)	48.002	L+T 1FT± S BCR @ SW COR NORMANDIE AVE + OCEAN AVE	SY 538
GARDENA (1960)	56.927	L+W SP 1FT± N @ SW COR NORMANDIE AVE + SEPULVEDA BLVD	SY 539
GARDENA (1960)	37.428	WIRE SPK W CB NORMANDIE AVE 48FT± N CTR AT+SFRR ABUT	SY 540
BASELINE (1955)	46.904	L+T 16FT± W C/L NORMANDIE AVE 12FT± S C/L ROSECRANS BLVD	SY 544A
BASELINE (1955)	46.587	L+T 26FT± E C/L HALLDALE AVE + 12FT± S C/L ROSECRANS BLVD	SY 545A
BASELINE (1955)	46.204	L+T 26FT± E C/L DENKER AVE + 12FT± S C/L ROSECRANS BLVD	SY 546A

OUT **OUT** **OUT**

JUL 1964

LOS ANGELES COUNTY ROAD DEPARTMENT
SURVEY SECTION FIELD ENGINEERING DIVISION

PAGE 5

QUAD-YEAR	ELEV	DESCRIPTION (INCLUDE QUAD AND YEAR IN DESCRIPTION)	BM NUMBER
BASELINE (1955)	47.629	L+T 1FT± N BCR @ NE COR WESTERN AVE + ROSECRANS AVE 40FT± E + 65FT± N	SY 5478
BASELINE (1955)	54.390	FC BRASS PLATE NR N CB ROSECRANS AVE 122FT± E C/L CRENSHAW BLVD	SY 551A
GARDENA (1960)	61.441	CHIS SQ CTR CULV HDWL N SIDE 190TH ST 30FT± W PP NO 313625E C.2MI± E CRENSHAW BLVD	SY 595
GARDENA (1960)	56.695	(X) CTR CULV HDWL N SIDE 190TH ST 20FT± E PP NO 313620 E C.4MI± E CRENSHAW BLVD	SY 596
GARDENA (1960)	55.459	L+T NW COR CONC BASE MET WATER CO AIR VENT 29FT± S C/L 190TH ST 87FT± E WESTERN AVE	SY 597
GARDENA (1960)	51.841	L+SPK CTR CONC HDWL 57FT± S C/L 190TH ST 80FT± E END OF HARVEY MACHINE CO 1100FT± E WESTERN AVE	SY 598A
BASELINE (1955)	70.181	L+T NR CTR CB RET @ NE COR MONA AVE E BARREL + ROSECRANS AVE	SY 1065
BASELINE (1955)	70.256	L+T NR CTR CB RET @ NW COR WILLOWBROOK AVE W BARREL + ROSECRANS AVE	SY 1066A
BASELINE (1955)	70.005	L+T NR CTR CB RET @ NE COR ACACIA ST + ROSECRANS AVE	SY 1067A
BASELINE (1955)	71.553	L+N 5FT± W CB RET @ NE COR BLEANDER ST + ROSECRANS AVE	SY 1068A
BASELINE (1955)	72.565	L+T CTR CB RET NE COR ROSECRANS AVE + ARANBE AVE	SY 1069A
BASELINE (1955)	73.373	L+T CTR CB RET NE COR ROSECRANS AVE + MATTHISEN AVE	SY 1070A
BASELINE (1955)	75.548	L+T CTR CB RET NW COR WILMINGTON AVE + ROSECRANS AVE	SY 1071A
BASELINE (1955)	75.581	L+T CTR CB RET NW COR WILMINGTON AVE + ROSECRANS AVE	SY 1072A
BASELINE (1955)	76.319	CS MON IN WELL 38FT± N C/L ROSECRANS AVE + 38FT± W OF NW COR CONC BRIDGE OVER COMPTON CREEK 164FT± E C/L DWIGHT ST MKD (CS MON BM 21-2-1952 RE 63)	SY 1073A
BASELINE (1955)	77.797	L+BN N CB 2FT± E BCR @ NE COR ROSECRANS AVE + DWIGHT ST 38FT± N + 35FT± E C/L INT	SY 1074A
BASELINE (1955)	85.963	L+BN N CB 15FT± W BCR @ NW COR ROSECRANS AVE + TAJUATA AVE 36FT± N + 70FT± W C/L INT	SY 1075A
BASELINE (1955)	85.543	L+N E CB TAJUATA AVE 60FT± S C/L ROSECRANS AVE	SY 1076
BASELINE (1955)	100.824	CS MON IN WELL 44FT± N C/L ROSECRANS AVE 105FT± E C/L CENTRAL AVE 32FT± E BCR 4FT± N CB MKD (BM 21-3 1952 RE 63)	SY 1078A
BASELINE (1955)	102.993	L+T E EDGE CONC PVMT 14FT± E C/L CENTRAL AVE + 65FT± S C/L ROSECRANS AVE	SY 1079A
BASELINE (1955)	103.475	L+BN N CB ROSECRANS AVE 2FT± W BCR + 44FT N C/L ROSECRANS AVE + 92FT± W C/L CENTRAL AVE	SY 1080A
BASELINE (1955)	105.898	L+BN 4IN S BCR @ SE COR KEENE AVE+ ROSECRANS AVE	SY 1081A

JUL 1964

LOS ANGELES COUNTY ROAD DEPARTMENT
SURVEY SECTION FIELD ENGINEERING DIVISION

PAGE 6

QUAD-YEAR	ELEV	DESCRIPTION (INCLUDE QUAD AND YEAR IN DESCRIPTION)	BM NUMBER
BASELINE (1955)	110.325	L+T S CB CENTRAL AVE SERVICE RD 1FT± E BCR 55FT± E C/L CAHITA AVE + 76FT± S C/L ROSECRANS AVE MKD (BM)	SY 1083A
BASELINE (1955)	113.842	L+T NW COR HIGH TENSION LINE 65FT± S C/L ROSECRANS AVE 35FT± E C/L MCKINLEY AVE TOWER NO 25	SY 1084A
BASELINE (1955)	114.526	L+BN N CB ROSECRANS AVE 1FT± 1FT± W BCR @ NW COR ROSECRANS AVE + STANFORD AVE 40FT± N + 52FT± W C/L INT	SY 1085A
BASELINE (1955)	118.101	L+T SW COR S GAS ISLAND 60FT N C/L ROSECRANS AVE + 100FT± E C/L AVALON BLVD	SY 1086B
BASELINE (1955)	118.234	L+T SW COR W GAS ISLAND 110FT± N C/L ROSECRANS AVE + 58FT± E C/L AVALON BLVD	SY 1087A
GARDENA (1960)	42.880	CS MON 15FT± E C/L AVALON BLVD W BARREL W OF POWER TRANSMISSION TOWER NO 44 1ST TOWER S OF VICTORIA ST	SY 2171
BASELINE (1955)	72.180	L+T E CB 2FT± S BCR @ SE COR ALAMEDA ST + ROSECRANS BLVD	SY 2353A
BASELINE (1955)	69.456	L+T E CB 26FT± E C/L ALAMEDA ST W BARREL + C/L PROD MAPLE ST	SY 2354A
BASELINE (1955)	68.972	L+BN N CB COMPTON BLVD 13FT± E OF E RAIL OF SPRR 29FT± W CB RET @ NW COR ALAMEDA ST E DR + COMPTON BLVD 60FT± W C/L E DRIVE 28FT± N C/L COMPTON BLVD	SY 2356A
BASELINE (1955)	69.164	L+BN S CB COMPTON BLVD 5FT± E OF E RAIL OF SPRR 29FT± W CB RET @ SW COR ALAMEDA ST E DR + COMPTON BLVD 70FT± W C/L E DRIVE 28FT± N C/L COMPTON BLVD	SY 2357A
BASELINE (1955)	65.802	L+T 25FT± W C/L ALAMEDA ST E BARREL ON C/L PROD LAUREL ST TO THE E	SY 2358A
BASELINE (1955)	66.197	L+T W CB @ BCR @ NW COR ALAMEDA ST E BARREL + LAUREL ST TO THE W 25FT± W + 32FT± N C/L INT	SY 2359A
BASELINE (1955)	64.431	STEEL SPK WITH (X) ON TOP CTR S BCR TO DRWY OF COMPTON STREET DEPT NO 458 S ALAMEDA ST 29FT± E C/L E BARREL 180FT± N MYRRH ST	SY 2360A
BASELINE (1955)	65.448	CS MON IN WELL 10IN DN 50FT± E C/L SPRR 27FT± W C/L ALAMEDA ST E BARREL + 18FT± S C/L PROD MYRRH ST TO THE E MKD (BM 5-22A)	SY 2361A
BASELINE (1955)	64.997	L+BN W CB ALAMEDA ST E BARREL 12FT± E OF 5TH TELEGRAPH POLE N OF OLIVE ST 530FT± S OF MYRRH ST 25FT± W C/L	SY 2362A
BASELINE (1955)	66.096	L+T IN CB ALONDRA BLVD 20FT± E OF E RAIL OF SPRR 40FT± W C/L ALAMEDA ST E BARREL 30FT± N C/L ALONDRA BLVD	SY 2363A
BASELINE (1955)	65.257	L+T CTR CB RET @ SE COR ALONDRA BLVD + ALAMEDA ST W BARREL 45FT± E C/L W BARREL + 41FT± S C/L ALONDRA BLVD	SY 2364A
BASELINE (1955)	63.023	L+T E CB ALAMEDA ST C/L PROD RAYMOND AVE 27FT± E C/L ALAMEDA ST	SY 2365A
BASELINE (1955)	62.777	L+T E CB ALAMEDA ST C/L PROD REEVE ST	SY 2366A

