

**LOS ANGELES COUNTY  
DEPARTMENT OF PUBLIC WORKS**

**BENCHMARKS**



**LANCASTER QUAD**

**2012 ADJUSTMENT  
2010 BASELINE  
NAVD 88 DATUM FOOT/METER**

## PREFACE

The Department of Public Works level net is composed of more than 1,700 miles or 2720 kilometers of levels supporting in excess of 9,000 benchmarks. Previously when a major readjustment of the net was undertaken, to emphasize the complete break with previous elevations, the CY, CG, and CL, series benchmarks were re-labeled DY, DG, and DL, respectively. Beginning in 1993 the Baseline readjustment year will be indicated on Baseline BM's, as indicated below (\*). Henceforth all BM numbers will be labeled as a Y, G, or L series that will no longer indicate the major adjustment year.

To facilitate the adjustment, indexing and distribution of the adjusted values of the net, the county territory was divided into 33 quads or areas. For the identification purposes each quad was given a name (i.e. "Rosemead", "La Mirada", and "Santa Fe"...etc). When benchmarks and elevations in the quad are used, the name of the bench and quad must be stated in the description, i.e.:

(*)	BASELINE	90.057	L&BR IN CTR OF CB RET @ NE COR	Y 9191
	(1990)	295.461	LA HABRA BLVD & VALLEY HOME AVE	

It is expected that this general adjustment will for the most part remain sound for 8 to 10 years. Updating constrained adjustments will continue in the future. When a quad is readjusted, new elevations will be published and the date of readjustment will be noted in the benchmark description. Two benchmarks with different adjustment dates will not normally agree with each other.

The basic accuracy of the net is reflected by an indicated field probable error of  $\pm 0.017$  feet per mile (4mm per kilometer) of leveling as determined from conditions of closure. However, many years of experience in vertical control in the greater Los Angeles basin and Antelope Valley indicates that because of varying degrees of subsidence and heaving, the true datum is recovered only by obtaining substantial agreement of a number of benchmarks.

The users of this network of benchmarks are invited to assist in its maintenance by notifying this department of cases of obliteration, apparent mistakes in descriptions or elevations, and the disturbance of benchmarks.

**Datum: North American Vertical Datum of 1988 (NAVD88)**

Note: NAVD 1988 minus approximately 3.0 feet (90 cm) equals NGVD 1929 Datum. For more accurate equations at individual benchmarks refer to previous publications.

**Abbreviations used in Benchmark Descriptions**

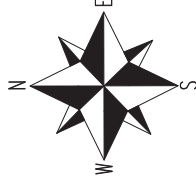
<b>Abbreviations</b>	<b>Descriptions</b>	<b>Abbreviations</b>	<b>Descriptions</b>
<i>ABUT</i>	Abutment	<i>LT</i>	Lead and Tack
<i>ALG</i>	Along	<i>LACE</i>	Los Angeles City Engineer
<i>ANG PT</i>	Angle Point	<i>LACS</i>	La County Engineer
<i>B/W</i>	Back of Walk	<i>LAFC</i>	La County Flood Control
<i>BCR</i>	Begin Curb Return	<i>L&amp;BN</i>	Lead and Bench Nail
<i>BC</i>	Begin Curve	<i>L&amp;BR</i>	Lead and Brad
<i>BLDG</i>	Building	<i>L&amp;N</i>	Lead and Nail
<i>BM</i>	Benchmark	<i>L&amp;SPK</i>	Lead and Spike
<i>BT SPK</i>	Boat or Bolt Spike	<i>L&amp;T</i>	Lead and Tack
<i>BR CAP</i>	Brass Cap Monument	<i>MCR</i>	Middle Curb Return
<i>C B</i>	Catch Basin	<i>MKD</i>	Marked
<i>CTR</i>	Center	<i>MC</i>	Middle Curve
<i>C/L</i>	Centerline	<i>MON</i>	Monument
<i>C/L INT</i>	Centerline Intersection	<i>N/O</i>	North of
<i>C/L PROD</i>	Centerline Produced	<i>NR</i>	Near
<i>CONC</i>	Concrete	<i>OPP</i>	Opposite
<i>COR</i>	Corner	<i>PI</i>	Point of Intersection
<i>COE</i>	Corps of Engineers	<i>PK&amp;W</i>	PK Nail and Washer
<i>CULV</i>	Culvert	<i>P/L</i>	Property Line
<i>CYN</i>	Canyon	<i>POST</i>	Point on Simi-Tangent
<i>CB</i>	Curb	<i>PP</i>	Power Pole
<i>CS MON</i>	Co. Eng. Monument	<i>PVMT</i>	Pavement
<i>CT SPK</i>	Cut Spike	<i>PROD</i>	Produced
<i>DPW</i>	Dept of Public Works	<i>RD</i>	Road
<i>DR</i>	Driveway	<i>RDBM</i>	Road Dept Benchmark
<i>E/O</i>	East of	<i>RDBM TAG</i>	Road Dept Benchmark Tag
<i>ECR</i>	End Curb Return	<i>RR</i>	Railroad
<i>EC</i>	End Curve	<i>R/W</i>	Right of Way
<i>ENT</i>	Entrance	<i>SDMH</i>	Storm Drain Manhole
<i>FL</i>	Flow line	<i>SMH</i>	Sewer Manhole
<i>FTG</i>	Footing	<i>SPK</i>	Spike
<i>FRWY</i>	Freeway	<i>ST&amp;W</i>	Spike Tin and Washer
<i>F/W</i>	Front of Walk	<i>S/O</i>	South of
<i>GAR</i>	Garage	<i>TP</i>	Telephone Pole
<i>HDWL</i>	Head Wall	<i>USC&amp;GS</i>	US Coast and Geodetic Survey
<i>HSE</i>	House	<i>USGS</i>	US Geological Survey
<i>HWY</i>	Highway	<i>WK</i>	Walk
<i>INT</i>	Intersection	<i>W/O</i>	West of
<i>IP</i>	Iron Pipe		

# QUAD COVERAGE INDEX MAP



KERN

COUNTY

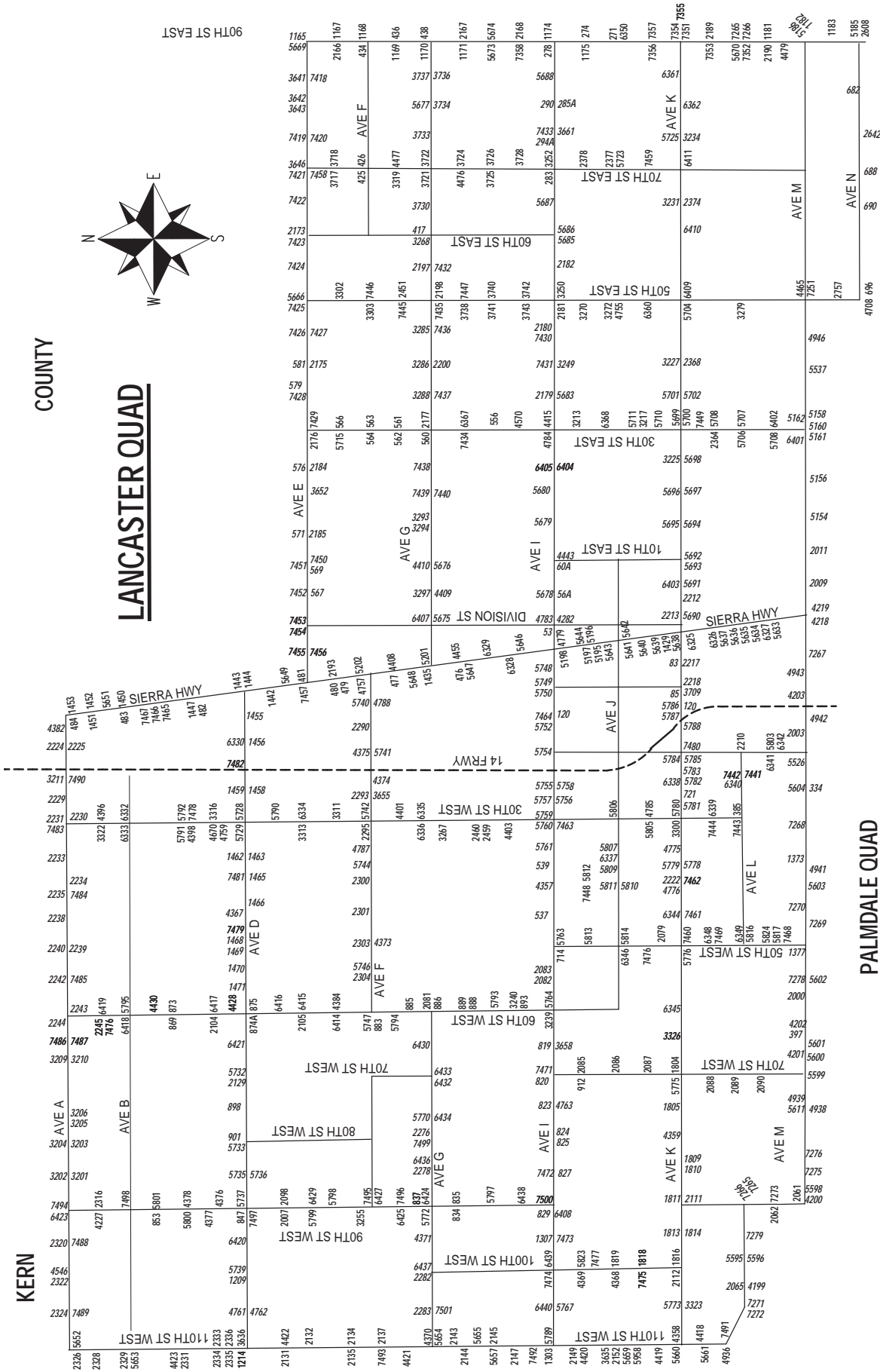


# LANCASTER QUAD

# LANCASTER EAST QUAD

# LANCASTER WEST QUAD

PALMDALE QUAD



90TH ST EAST

7354

7351

7355

7354

7351

7355

7354

7351

7355

7354

7351

7355

7354

7351

7355

7354

7351

7355

7354

7351

7355

7354

7351

7355

7354

7351

7355

7354

7351

7355

7354

7351

7355

7354

7351

7355

7354

7351

7355

7354

7351

7355

7354

7351

7355

7354

7351

7355

7354

7351

7355

7354

7351

7355

7354

7351

7355

7354

7351

7355

7354

7351

7355

7354

7351

7355

7354

7351

7355

7354

7351

7355

7354

7351

7355

7354

7351

7355

7354

7351

7355

7354

7351

7355

7354

7351

7355

7354

7351

7355

7354

7351

7355

7354

7351

QUAD YEAR	ELEV FOOT/METER	DESCRIPTION	BM NUMBER
LANCASTER (2012)	2,353.158 717.245	CSBM MON IN CONC FLUSH 1FT N/O N CF 19.7FT W/O BCR @ NW COR 5TH ST E & AVE I 41FT N/O & 82FT W/O C/L INT MKD (BM 105-20 1958)	L 56A
LANCASTER (2012)	2,360.354 719.438	USC&GS BR CAP MON IN S CB 2FT W/O BCR @ SW COR AVE I & 10TH ST E(CHALLENGER WAY) 78.7FT W & 39.4FT S/O C/L INT MKD (Y 488 RESET 1961)	L 60A
LANCASTER (2012)	2,416.036 736.410	CS MON IN WELL 2.5FT DN @ C/L INT AVE K & 5TH ST W MKD (22,27,T7N,R12W)	L 83
LANCASTER (2012)	2,407.690 733.866	L&BN IN NE COR SO CALIF GAS CO VALVE BOX 65.6FT W/O C/L 10TH ST W & 38.1FT N/O C/L AVE K	L 85
LANCASTER (2012)	2,323.711 708.269	L&T IN N CB SERV RD @ NE COR AVE I & 15TH ST W 50.9FT E/O & 80FT N/O C/L INT	L 120
BASELINE (2010)	2,443.195 744.688	CS MON IN WELL 15" DN @ C/L INT 90TH ST E & AVE J MKD (1/4 SEC 18,17,19,20,T7N,R10W,1926)	L 271
BASELINE (2010)	2,425.567 739.315	CS MON IN WELL 20" DN @ C/L INT 90TH ST E & AVE I-8 MKD (1/4 SEC 17,18,T7N,R10W)	L 274
BASELINE (2010)	2,412.918 735.460	CS MON IN WELL 10" DN @ C/L INT 90TH ST E & AVE I MKD (CO SURV 7,8,17,18,T7N,R10W)	L 278
LANCASTER (2012)	2,400.875 731.789	CSBM MON FL SW/O PP 39.4FT S/O & 39.4FT W/O C/L INT AVE I & 70TH ST E MKD (BM 107-30 1961) MKR 3.3FT S/O MON	L 283
LANCASTER (2012)	2,413.634 735.678	CS MON 2FT S/O PP #991781E 29.5FT S/O & 46.9FT W/O C/L INT AVE I & 80TH ST E MKD (BM 107-28 1961) MKR POST 3.3FT S/O MON	L 285A
LANCASTER (2012)	2,403.938 732.723	CSBM MON FLUSH 15.1FT SW/O PP #482159E 33FT S & 25FT W/O C/L INT AVE I & 75TH ST E MKD (BM 107-29 1961)	L 294A
BASELINE (2010)	2,521.114 768.438	CS MON IN WELL 1.5' DN @ C/L INT AVE M & 25TH ST W MKD (1/4 COR 32,5,T6N,R12W)	L 334
LANCASTER (2012)	2,443.996 744.932	L&T IN NE COR CONC DR TO HSE #3018 AVE L 75.5FT S/O C/L & 193.6FT W/O C/L 30TH ST W	L 385
BASELINE (2010)	2,517.784 767.423	CS MON IN WELL 2' DN @ C/L INT AVE M & 60TH ST W MKD (SEC COR 34,35,3,2,R13W,T7N,T6N,)	L 397
LANCASTER (2012)	2,353.543 717.362	CS MON IN WELL 1.8FT DN @ C/L INT 60TH ST E & AVE G MKD (SEC COR 34,35,3,2,T7N,R11W)	L 417
LANCASTER (2012)	2,344.661 714.655	RD MON @ NW COR AVE F & 70TH ST E 32.8FT N/O & 24.9FT W/O C/L INT MKD (1958) MKR POST 2FT W/O MON	L 425
LANCASTER (2012)	2,345.116 714.794	CS MON IN WELL 1.3FT DN @ C/L INT AVE F & 70TH ST E MKD (SEC COR 26,25,35,36,R11W,T8N)	L 426
BASELINE (2010)	2,355.353 717.914	CS MON 15" DN @ C/L INT 90TH ST E & AVE F MKD (CO SURV 30,29,31,32,R10W,T8N,RE 2177)	L 434
BASELINE (2010)	2,365.710 721.071	2" IP W/CONC PLUG & BT SPK IN WELL 15" DN @ C/L INT 90TH ST E & AVE F-8	L 436

QUAD YEAR	ELEV FOOT/METER	DESCRIPTION	BM NUMBER
BASELINE ( 2010 )	2,374.688 723.807	RD MON IN WELL 8" DN @ SE COR 90TH ST E & AVE G 30' E & 40' S/O C/L INT MKD (1958) MKR POST 2' E/O MON	L 438
LANCASTER ( 2012 )	2,318.390 706.647	USC&GS MON S END HDWL CULV 26.2F) W/O C/L SIERRA HWY & 1584F) S/O AVE G MKD (Z 811 1947) @ MI MKR #6.35	L 476
LANCASTER ( 2012 )	2,306.404 702.994	USC&GS MON FLUSH 34.1FT E/O C/L SIERRA HWY & 1450FT S/O AVE F MKD (Y 56 1926) MKR POST 3FT S/O MON (BENT)	L 477
LANCASTER ( 2012 )	2,305.352 702.673	USGS TRI STA MON 1FT UP 226FT W/O C/L SIERRA HWY & 0.4MI N/O AVE F MKD (OBAN 1929 LINT) MKR POST 3.3FT E/O MON 607FT N/O MI MRK #4.67	L 479
LANCASTER ( 2012 )	2,302.503 701.805	USC&GS REF MON 0.7FT UP 226FT W/O C/L SIERRA HWY & 0.4M) N/O AVE F MKD (OBAN NO 2 1941) MKR POST 2FT W/O MON 685FT N/O MI MRK #4.67	L 480
LANCASTER ( 2012 )	2,302.123 701.689	USC&GS MON FLUSH W END S CONC ABUT OF RR BRIDGE 72.2FT N/O C/L AVE E & 121.4FT E/O C/L SIERRA HWY MKD (H 487 1955)	L 481
LANCASTER ( 2012 )	2,305.738 702.791	USC&GS MON FLUSH TOP OF E END S CONC ABUT OF SPRR BRIDGE 88.6FT N/O C/L AVE C & 141FT E/O C/L SIERRA HWY MKD (J 487 1955)	L 482
LANCASTER ( 2012 )	2,307.967 703.470	USC&GS MON FLUSH S END W HDWL CULV UNDER SPRR 35.1FT N/O C/L AVE B & 121FT E/O C/L SIERRA HWY MKD (N 487 1955)	L 483
LANCASTER ( 2012 )	2,310.520 704.249	USC&GS MON FLUSH N END HDWL OF SPRR CULV 123FT E/O C/L SIERRA HWY & 174FT S/O C/L AVE A (KERN CO LINE) MKD (M 487 1955)	L 484
LANCASTER ( 2012 )	2,332.384 710.913	CSBM MON 4IN UP @ NE COR AVE I & 45TH ST W 88.6FT N/O & 29.5FT E/O C/L INT MKD (BM 102-9 1957)	L 537
LANCASTER ( 2012 )	2,319.793 707.075	CSBM MON 1.5FT DN @ NE COR AVE I & 35TH ST W 39.4FT N/O & 62.3FT E/O C/L INT 24.9FT W/O PP ( #865024E) MKD (BM 102-7 1957 RE 5869) MKR 1FT N/O MON	L 539
LANCASTER ( 2012 )	2,360.009 719.333	CS MON IN WELL 0.5FT DN @ C/L INT 30TH ST E & AVE H MKD (SEC COR 5,6,7,8,T7N,R11W)	L 556
LANCASTER ( 2012 )	2,345.049 714.773	CS MON IN WELL 0.7FT DN @ C/L INT 30TH ST E & AVE G MKD (31,32,5,6,T7N,R11W)	L 560
LANCASTER ( 2012 )	2,337.397 712.441	CS MON IN WELL 1FT DN @ C/L INT 30TH ST E & AVE F-8 MKD (1/4 COR 31,32,T8N,R11W)	L 561
LANCASTER ( 2012 )	2,338.747 712.852	2IN IP 49.2FT E/O & 49.2FT N/O C/L INT 30TH ST E & AVE F-8 (USE NE RIM) MKR POST 1FT W/O MON	L 562
LANCASTER ( 2012 )	2,330.739 710.411	2IN IP W/CONC PLUG & NAIL 45.9FT E & 45.9FT S/O C/L INT 30TH ST E & AVE F MKR POST 1FT W/O MON	L 563
LANCASTER ( 2012 )	2,329.426 710.011	CS MON IN WELL 1.2FT DN @ C/L INT 30TH ST E & AVE F MKD (29,30,31,32,T8N,R11W)	L 564
LANCASTER ( 2012 )	2,320.724 707.359	CS MON IN WELL 1.5FT DN @ C/L INT 30TH ST E & AVE E-8 MKD (1/4 COR 29,30,T8N,R11W)	L 566

QUAD YEAR	ELEV FOOT/METER	DESCRIPTION	BM NUMBER
LANCASTER (2012)	2,297.707 700.343	RD MON IN WELL 0.7FT DN 36FT S/O C/L AVE E & 240FT W/O C/L 5TH ST E PROP 4.9FT S/O PP #1270585E MKD (1959) MKR POST 2FT S/O MON	L 567
LANCASTER (2012)	2,304.644 702.458	RD MON IN WELL 0.7FT DN 5FT S/O PP #1270605E 36FT S/O C/L AVE E & 240FT W/O C/L 15TH ST E (PROP) MKD (1959) MKR POST 1FT S/O MON	L 571
LANCASTER (2012)	2,312.627 704.891	RD MON IN WELL 0.7FT DN 6.6FT S/O PP #1270627E 39.4FT S/O C/L AVE E & 226FT E/O C/L 25TH ST E (PROP) MKD (1959) MKR POST 3.3FT SWLY/O MON	L 576
LANCASTER (2012)	2,315.183 705.670	RD BM MON IN WELL 0.7FT DN 5FT S/O PP #1270648E 28FT S/O C/L AVE E & 260FT W/O C/L 35TH ST E (PROP) MKD (1959) MKR POST 2FT S/O MON	L 579
BASELINE (2010)	2,537.730 773.502	RDBM MON IN WELL 8IN DN @ NW COR AVE N & PROP 85TH ST E 100FT W & 50FT N C/L INT 2IN IP 2FT N	L 682
BASELINE (2010)	2,520.613 768.285	RDBM MON IN WELL 8IN DN ON NW COR AVE N & 70TH ST E 100FT W & 50FT N C/L INT 2IN IP MKR 2FT N	L 688
BASELINE (2010)	2,515.688 766.784	RDBM MON IN WELL 8IN DN ON NW COR AVE N & PROP 65TH ST E 100FT W & 50FT N C/L INT 2IN IP 2FT N	L 690
BASELINE (2010)	2,502.605 762.796	CS MON IN WELL 1.5' DN @ C/L INT AVE N & 50TH ST E E MKD (SEC COR 3,4,9,10,T6N,R11W)	L 696
LANCASTER (2012)	2,336.683 712.223	RDBM TAG IN CONC FTG OF FENCE COR POST @ SW COR 50TH ST W & AVE I 39.4FT S/O & 59.1FT W/O C/L INT	L 714
LANCASTER (2012)	2,390.070 728.496	L&T IN CONC DR @ W CONC BLOCK POST 42.7FT S/O C/L AVE K & 262FT W/O C/L 25TH ST W @ HSE #2516 MKD (BM)	L 721
LANCASTER (2012)	2,367.431 721.595	CSBM MON, UP 4" @ NW COR AVE I & 70TH ST W 32.8FT N/O & 23FT W/O C/L INT MKD (BM 102-15 1957)	L 820
LANCASTER (2012)	2,378.842 725.073	USC&GS MON FLUSH @ NE COR AVE I & 75TH ST W 61FT N & 16.4FT E/O C/L INT MKD (B 306 1935) MRK POST 1FT N/O MON & 1.5FT W/O FENCE LINE PP#955783E 114.8FT S/O MON ON FENCE LINE	L 823
LANCASTER (2012)	2,391.809 729.026	CS MON FLUSH @ NW COR AVE I & 80TH ST W 47.9FT N/O & 24.9FT W/O C/L INT MKD (BM 102-17 1957) 7.6M(24.9FT) S/O PP #GT 76579	L 825
LANCASTER (2012)	2,402.513 732.288	CSBM MON FLUSH 27.9FT N/O C/L AVE I & 6.6FT W/O C/L PROP 85TH ST W MKD (BM 102-18 1957) MKR POST 2FT N/O MON	L 827
LANCASTER (2012)	2,424.480 738.984	CSBM MON @ NW COR AVE I & 90TH ST W 69FT W/O & 30.8FT N/O C/L INT MKD (BM 102-19 1957)	L 829
LANCASTER (2012)	2,431.454 741.109	RDBM TAG IN CONC BASE OF BREATHER PIPE @ SE COR 90TH ST W & PROP AVE G-8 49.2FT S/O & 39.4FT E/O C/L INT	L 834
LANCASTER (2012)	2,432.731 741.499	RDBM MON IN WELL 9" DN @ NW COR 90TH ST W & PROP AVE G-8 210FT N/O & 22.9FT W/O C/L INT 6.5FT S/O PP MKR POST 2FT W/O MON	L 835
LANCASTER (2012)	2,432.945 741.564	L&T IN CONC APRON OF GARAGE NE COR 90TH ST W & AVE G 180FT N & 129FT E C/L INT MKD (BM)	L 837



QUAD YEAR	ELEV FOOT/METER	DESCRIPTION	BM NUMBER
LANCASTER ( 2012 )	2,443.597 744.811	RDBM TAG IN CONC FTG OF 10" BREATHER PIPE SE COR 90TH ST W & AVE D 151FT E/O & 55.8FT S/O C/L INT	L 847
LANCASTER ( 2012 )	2,447.919 746.128	RDBM TAG IN BASE CONC STAND PIPE @ NW COR 90TH ST W & PROP AVE B-8 29.5FT N/O & 55.8FT W/O C/L INT	L 853
LANCASTER ( 2012 )	2,384.808 726.892	L&T IN CONC APRON GARAGE SE COR 60TH ST W & AVE B-8 PROP 15.1FT S/O & 118FT E/O C/L INT	L 869
LANCASTER ( 2012 )	2,385.130 726.990	RD MON IN WELL 0.6FT DN @ NE COR 60TH ST W & AVE C-8 9.8FT W/O GUY POLE #GT 7678, 4.9FT N & 80' E/O C/L INT	L 873
LANCASTER ( 2012 )	2,387.343 727.664	USC&GS DISK IN CONC HDWL @ NE COR AVE D & 60TH ST W 29.5FT N/O & 29.5FT E/O C/L INT MKD (B 1154 1961)	L 874A
LANCASTER ( 2012 )	2,387.793 727.802	ST HWY BR CAP IN CONC IN HDWL @ NW COR 60TH ST W & AVE D 39.4FT N/O & 24FT W/O C/L INT	L 875
LANCASTER ( 2012 )	2,355.013 717.810	CS MON 2IN UP @ SE COR 60TH ST W & AVE F 30.8FT S/O & 75.5FT E/O C/L INT MKD (BM 103-11 1957) MKR POST 1FT S/O MON	L 883
LANCASTER ( 2012 )	2,354.185 717.558	RDBM TAG SW COR FTG OF AIRPORT FENCE @ NE COR 60TH ST W & AVE G 49.2FT N & 49.2FT E/O C/L INT MRK POST 2FT N/O MON	L 886
LANCASTER ( 2012 )	2,359.081 719.050	CS MON IN WELL 1.5FT DN @ C/L INT 60TH ST W & PROP AVE G-8 MKD (1/4 SEC COR 2,3,T7N,R13W)	L 888
LANCASTER ( 2012 )	2,354.528 717.662	CS MON FLUSH @ SE COR 60TH ST W & PROP AVE H-8 42.7FT S & 42.7 E/O C/L INT 3.9FT E/O PP ( #955519E) MKD (BM 103-16 RE 5869)	L 893
LANCASTER ( 2012 )	2,413.566 735.657	RDBM TAG IN 300MM(1FT) CONC STANDPIPE @ NE COR AVE D & 75TH ST W 17M(55.8FT) N/O & 12M(39.4FT) E/O C/L INT	L 898
LANCASTER ( 2012 )	2,420.911 737.896	L&T IN NW CONC FTG OF HAY BARN @ SE COR AVE D & 80TH ST W 32.8FT S/O & 49.2FT E/O C/L INT MKD (BM)	L 901
LANCASTER ( 2012 )	2,362.084 719.965	CSBM MON 4IN UP @ NW COR 70TH ST W & AVE I-8, 351FT N/O & 26.2FT W/O C/L INT MKD (BM 106-122,1959)	L 912
BASELINE ( 2010 )	2,343.530 714.310	CSBM MON 0.5FT UP 45.9FT S & 32.8FT E/O C/L INT AVE E & 90TH ST E MKD (BM 106-122 1959)	L 1165
BASELINE ( 2010 )	2,348.365 715.784	RDBM TAG IN CONC PAD FLUSH 50' S & 50' E/O C/L INT 90TH ST E & AVE E-8 MKR POST 2' E/O MON	L 1167
BASELINE ( 2010 )	2,357.164 718.466	CSBM MON FL 30' N & 72' E/O C/L INT AVE F & 90TH ST E MKD (BM 116-6 1961) MKR POST 2' S/O MON	L 1168
BASELINE ( 2010 )	2,366.490 721.308	CSBM MON 2" UP 75' N & 30' E/O C/L INT 90TH ST E & AVE F-8 MKD (BM 116-5 1961) MKR 2' W MON	L 1169
BASELINE ( 2010 )	2,375.802 724.147	CSBM MON 3" UP 70' S & 27' W/O C/L INT 90TH ST E & AVE G MKD (116-4 1961) MKR 2' E/O MON	L 1170
BASELINE ( 2010 )	2,384.421 726.774	CSBM MON 3" UP 20' S & 80' E/O C/L INT 90TH ST E & AVE G-8 MKD (BM 116-3 1961) MKR POST 10" N/O MON (BENT)	L 1171

QUAD YEAR	ELEV FOOT/METER	DESCRIPTION	BM NUMBER
BASELINE (2010)	2,414.431 735.921	CSBM MON FL 30' S & 68' W/O C/L INT 90TH ST E & AVE I 3' E/O PP #955497E MKD (BM 107-25 1961) MKR POST 3' E/O MON	L 1174
BASELINE (2010)	2,425.177 739.196	CSBM MON FL 550' N & 35' E/O C/L INT 90TH ST E & AVE I-8 MKD (BM 107-25 1961) MKR 3' E/O MON	L 1175
BASELINE (2010)	2,516.203 766.941	CSBM MON 3" UP 35' S & 34' E/O C/L INT 90TH ST E & AVE L-8 MKD (BM 107-19 1961)	L 1181
BASELINE (2010)	2,528.922 770.818	CS BM MON 4" UP @ NE COR AVE M & 90TH ST E 36' N & 36' E/O C/L INT MKD (BM 107-18 1961)	L 1182
BASELINE (2010)	2,539.567 774.062	CSBM MON 4" UP @ NE COR 90TH ST E & AVE M-8 40' N & 38' E/O C/L INT MKD (BM 107-17 1961) MKR POST 3' E/O MON	L 1183
LANCASTER (2012)	2,464.494 751.180	RDBM TAG 1FT N/O & 7.9FT E/O SW COR CONC SLAB 110FT N/O C/L AVE D & 216FT E/O C/L 100TH ST W	L 1209
BASELINE (2010)	2,490.787 759.194	RDBM MON IN WELL FL 236FT W/O C/L 110TH ST W & 27.9FT N/O C/L AVE D 11.8FT E/O PP #4244358E MKD (1961) MKR POST 2FT N/O MON	L 1214
BASELINE (2010)	2,500.260 762.082	CS MON IN WELL 1.5FT DN ON C/L 110TH ST W 4.9FT N/O C/L AVE I MKD (CO SUR 11,12,13,14,T7N,R14W, RE 2177)	L 1303
LANCASTER (2012)	2,439.362 743.520	CSBM MON FLUSH 55.8FT S. & 45' W/O C/L AVE I @ 95TH ST W UNDER EDISON TOWER M26T4 MKD (BM 102-21 1957)	L 1307
BASELINE (2010)	2,528.410 770.662	CSBM MON 5IN UP 34FT N C/L AVE M & 175FT E C/L 35TH ST W. 6FT E PP 1054605E MK (BM 104-7 1958)	L 1373
BASELINE (2010)	2,532.458 771.896	CSBM MON 4IN UP 28FT S & 41FT W/CL INT AVE M & 47TH ST W. 4FT W PP 168073E MK (BM 104-12 1958)	L 1377
LANCASTER (2012)	2,398.184 730.969	DPW TAG N CB 1FT W/O BCR @ NW COR SIERRA HWY & AVE J-8 85.3FT W/O & 18FT N/O C/L INT	L 1429
LANCASTER (2012)	2,315.380 705.730	CS MON @ NE COR SIERRA HWY & AVE G 124.7FT N/O & 98.4FT E/O C/L INT MKD (BM 101-137 1957) MKR POST 2FT E/O MON	L 1435
LANCASTER (2012)	2,300.398 701.163	CSBM MON FL @ SE COR SIERRA HWY & AVE D-8 (PROP) 90FT E/O & 249FT S/O C/L INT MKD (BM 101-144 1957)	L 1442
LANCASTER (2012)	2,304.840 702.517	RDBM TAG IN W CB SIERRA HWY (E CB OF ISLAND) 30.8FT W/O C/L & 19.7FT S/O C/L AVE D (HWY 138)	L 1443
LANCASTER (2012)	2,303.090 701.984	L&PK NAIL IN CTR OF N HDWL @ NW COR SIERRA HWY & AVE D (HWY 138) 172FT W/O & 49.2FT N/O C/L INT	L 1444
LANCASTER (2012)	2,306.365 702.982	RDBM TAG IN N END BRIDGE 53-512 25FT W/O C/L SIERRA HWY & 82FT N/O C/L AVE C @ MI MKR #2.00	L 1447
LANCASTER (2012)	2,305.683 702.774	WIRE SPK IN S END CONC HDWL CULV 25FT E/O C/L SIERRA HWY & 100FT S/O C/L AVE B @ MI MKR #1.03	L 1450
LANCASTER (2012)	1.000 0.305	RD HD SPK IN S END E HDWL OF BRIDGE (25FT E/O C/L SIERRA HWY & 0.6MI N/O AVE B MKD (BM 101-150) @ MI MKR #0.39	L 1451
LANCASTER (2012)	2,309.798 704.029	RDBM TAG IN N END W HDWL OF BRIDGE 25FT W C/L SIERRA HWY & 0.6MI N/O AVE B @ MI MKR #0.39	L 1452

QUAD YEAR	ELEV FOOT/METER	DESCRIPTION	BM NUMBER
LANCASTER ( 2012 )	2,309.779 704.023	WIRE SPK IN S END OF CONC HDWL CULV @ SE COR COR SIERRA HWY & AVE A 24.9FT E/O & 206FT S/O C/L INT @ MI MKR #0.04	L 1453
LANCASTER ( 2012 )	2,307.288 703.264	RDBM TAG CTR N HDWL CULV 23FT N/O C/L AVE D & 15.1FT W/O C/L 15TH ST W (PROP)	L 1455
LANCASTER ( 2012 )	2,313.537 705.168	USC&GS BR DISK IN NW COR OF E CONC HDWL @ ENT TO SANITATION DIST YD #14 39.4FT N/O C/L AVE D & 154.2FT E/O C/L PROP 20TH ST W MKD (D1154 1961)	L 1456
LANCASTER ( 2012 )	2,319.120 706.870	RDBM TAG IN CTR CONC HDWL 23FT N/O C/L AVE D & 75.5FT E/O C/L PROP 25TH ST W	L 1458
LANCASTER ( 2012 )	2,320.827 707.390	RDBM TAG IN CTR CONC HDWL 21FT N/O C/L AVE D & 817FT W/O C/L PROP 25TH ST W	L 1459
LANCASTER ( 2012 )	2,336.289 712.103	RDBM TAG IN CTR CONC HDWL 21FT N/O C/L AVE D & 331FT E/O C/L PROP 35TH ST W	L 1462
LANCASTER ( 2012 )	2,339.574 713.104	DPW TAG IN CTR CONC HDWL 21FT N/O C/L AVE D & 508FT W/O C/L PROP 35TH ST W	L 1463
LANCASTER ( 2012 )	2,346.973 715.360	RDBM TAG IN CTR CONC HDWL 21FT N/O C/L AVE D & 357FT W/O C/L PROP 40TH ST W	L 1465
LANCASTER ( 2012 )	2,353.192 717.255	STATE HWY BR CAP IN CTR CONC HDWL 21FT N/O C/L AVE D & 964FT E/O C/L PROP 45TH ST W	L 1466
LANCASTER ( 2012 )	2,369.577 722.249	USC&GS REF MON 0.5FT UP @ NE COR AVE D & 50TH ST W 95.1FT N/O & 61FT E/O C/L INT MKD (AVENUE NO 1 1960) MKR POST 3.9FT N/O MON	L 1468
LANCASTER ( 2012 )	2,370.274 722.462	USC&GS MON 4IN UP @ NW COR AVE D & 50TH ST W 101.7FT N/O & 91.9FT W/O C/L INT MKD (AVENUE 1960) MKR POST 2FT S/O MON	L 1469
LANCASTER ( 2012 )	2,378.502 724.970	RDBM TAG IN CTR CONC HDWL 21FT N/O C/L AVE D 489FT E/O C/L PROPOSED 55TH ST W	L 1470
LANCASTER ( 2012 )	2,380.373 725.540	2IN IP W/CUT SPK & CONC ON C/L PROP 55TH ST W & 49.2FT S/O C/L AVE D	L 1471
LANCASTER ( 2012 )	2,381.207 725.794	L&BN IN CONC FTG OF GATEPOST @ SW COR AVE K & 70TH ST W 39.4FT S/O & 103FT W/O C/L INT MKD (BM)	L 1804
LANCASTER ( 2012 )	2,384.882 726.914	2IN IP WITH CE TAG 4IN DN @ SE COR AVE K & 75TH ST W PROP 49FT S/O & 49FT E/O APPROX C/L INT, 28' SE/O PP	L 1805
LANCASTER ( 2012 )	2,430.564 740.838	CS MON IN WELL 1FT DN @ C/L INT AVE K & 85TH ST W MKD (1/4 COR 20,29,T7N,R13W)	L 1809
LANCASTER ( 2012 )	2,433.013 741.585	2IN IP WITH CE TAG 0.7FT UP @ NW COR AVE K & 85TH ST W PROP 49FT N/O & 49FT W/O APPROX C/L INT MKR POST 1FT N/O MON	L 1810
LANCASTER ( 2012 )	2,472.939 753.754	1-1/2IN IP & BRAD, DN 6"@ SE COR AVE K & 90TH ST W 49FT S/O & 49FT E/O APPROX C/L INT, 4' NW/O GUY POLE #4756549E	L 1811
LANCASTER ( 2012 )	2,526.712 770.144	2IN IP WITH CE TAG FL @ SE COR AVE K & 95TH ST W PROP 49FT S/O & 49FT E/O APPROX C/L INT	L 1813

QUAD YEAR	ELEV FOOT/METER	DESCRIPTION	BM NUMBER
LANCASTER ( 2012 )	2,526.646 770.124	2IN IP WITH CE TAG 4IN DN @ NW COR AVE K & 95TH ST W PROP 49FT N/O & 49FT W/O APPROX C/L INT MKR POST 1FT S/O MON	L 1814
LANCASTER ( 2012 )	2,586.116 788.251	RDBM MON 0.7FT DN 20FT E/O C/L 100TH ST W PROP & 90FT N/O C/L AVE K MKD (BM 1964) MKR POST 2FT N/O MON	L 1816
LANCASTER ( 2012 )	2,533.528 772.222	RDBM MON FLUSH ON TP LINE 26' E/O C/L 100TH ST W & 33' N/O C/L AVE J-8 MKR POST 1M N/O MON	L 1818
LANCASTER ( 2012 )	2,473.631 753.965	CS MON IN WELL 8" DN @ C/L INT AVE J & 100TH ST W MKD (SEC COR 24,19,13,18,R13W,R14W,T7N)	L 1819
BASELINE ( 2010 )	2,504.280 763.307	CSBM MON 4" UP @ SW COR AVE M & 55TH ST W 40' S & 37' W/O C/L INT MKD (BM 104-14 1958)	L 2000
BASELINE ( 2010 )	2,521.308 768.497	CSBM MON 4" UP @ NE COR AVE M & 15TH ST W 30' N & 215' E/O C/L INT MKD (BM 103-3 1958)	L 2003
LANCASTER ( 2012 )	2,439.389 743.528	RDBM MON IN WELL (0.7FT DN @ SW COR 90TH ST W & AVE D-8 210FT S/O & 45.9FT W/O C/L INT MKR 2FT W	L 2007
BASELINE ( 2010 )	2,522.058 768.726	CSBM MON 4" UP @ NW COR AVE M & 5TH ST E 40' N & 100' W/O C/L INT MKD (BM 121-1 1961) MKR POST 2' S/O MON	L 2009
BASELINE ( 2010 )	2,506.909 764.108	CSBM MON 4" UP @ NW COR AVE M & 10TH ST E 72' N & 40' W/O C/L INT MKD (BM 121-2 1961)	L 2011
BASELINE ( 2010 )	2,992.501 912.117	USC&GS MON 4" UP @ NW COR AVE M (PROP) & 90TH W 10' NW/O APPROX C/L MKD (Z 1044 1960) MKR POST 2' W/O MON	L 2061
BASELINE ( 2010 )	2,345.286 714.845	CS MON FL @ FUT C/L INT AVE L-8 & 90TH ST W MKD (1/4 COR 31,32,R13W,T7N,1927) MKR 9.8FT N/O MON	L 2062
BASELINE ( 2010 )	2,764.788 842.710	CS MON 2' DN @ FUT C/L INT AVE L & 100TH ST W 40' NE FENCE COR & 30' NW/O 2" IP MKR @ CL 4199 MKD (SEC COR 25,30,36,31,T7N,R14W)	L 2065
LANCASTER ( 2012 )	2,374.509 723.753	RDBM TAG IN E CB 39.4FT E/O C/L 50TH ST W & 0.3MI N/O AVE K 19.7FT N/O N DRWY TO LA CO WATER DIST YD	L 2079
LANCASTER ( 2012 )	2,354.651 717.700	USC&GS MON 3IN UP @ NE COR 60TH ST W & AVE G 72.2FT N/O & 49.2FT E/O C/L INT MKD (W 1153 1961)	L 2081
LANCASTER ( 2012 )	1.000 0.305	CSBM MON 4IN UP 42.7FT S/O C/L AVE I & 100' W/O 50TH ST W MKD (BM 102-11B 1962)	L 2082
LANCASTER ( 2012 )	2,349.030 715.987	CSBM MON IN E HDWL OF ABAN DRWY TO MIRA LOMA FACILITY 29.5FT S/O C/L AVE I & 0.2MI) E/O 60TH ST W MKD (BM 102-11A 1962)	L 2083
LANCASTER ( 2012 )	2,360.047 719.344	CS MON IN WELL 1.6FT DN @ C/L INT 70TH ST W & FUT AVE I-8 MKD (1/4 SEC COR 16,15,R13W,T7N, RE 62)	L 2085
LANCASTER ( 2012 )	2,358.516 718.878	CS MON IN WELL 2.1FT DN @ C/L INT 70TH ST W & AVE J MKD (SEC COR 15,16,21,22,R13W,T7N)	L 2086
LANCASTER ( 2012 )	2,364.464 720.691	CS MON IN WELL 2FT DN @ C/L INT 70TH ST W & FUT AVE J-8 MKD (1/4 COR 21,22,R13W,T7N,RE 62)	L 2087

QUAD YEAR	ELEV FOOT/METER	DESCRIPTION	BM NUMBER
LANCASTER ( 2012 )	2,402.585 732.310	CS MON IN WELL 1.6FT DN @ C/L INT 70TH ST W & FUT AVE K-8 MKD (1/4 COR 27,28,R13W,T7N,RE 5869)	L 2088
LANCASTER ( 2012 )	2,442.095 744.353	CS MON IN WELL 340MM(1FT) DN @ C/L INT 70TH ST W & AVE L MKD (CO SUR 33,34,27,28,R13W,T7N,1927)	L 2089
LANCASTER ( 2012 )	2,514.204 766.332	CS MON IN WELL 1FT DN @ C/L INT 70TH ST W & FUT AVE L-8 MKD (1/4 COR 33,34,R13W,T7N,1928)	L 2090
LANCASTER ( 2012 )	2,439.943 743.697	1-1/2" IP 12" DN @ SW COR 90TH ST W & AVE D-8 49.2FT S/O & 49.2FT W/O C/L INT	L 2098
LANCASTER ( 2012 )	2,384.774 726.881	USC&GS MON FL @ SE COR 60TH ST W & FUT AVE C 170.6FT S/O & 39.4FT E/O C/L INT MKD (P 1154 1961) MKR SIGN 1FT S/O MON	L 2104
LANCASTER ( 2012 )	2,362.510 720.095	USC&GS MON FL @ SE COR 60TH ST W & FUT AVE E 24.9FT S/O & 39.4FT E/O C/L INT MKD (A 1154 1961) MKR POST 2FT S/O MON	L 2105
LANCASTER ( 2012 )	2,471.456 753.302	CS MON IN WELL 1.3FT DN @ C/L INT AVE K & 90TH S W MKD (CO SUR 19,20,29,30,R13W,T7N,1926)	L 2111
LANCASTER ( 2012 )	2,586.302 788.307	CS MON IN WELL 0.7FT DN @ C/L INT AVE K & FUT 100TH ST W MKD (SEC COR 24,25,19,30,R13W,R14W, T7N,R 5869)	L 2112
LANCASTER ( 2012 )	2,404.754 732.971	CSBM MON IN SIDE OF RESERVOIR @ NW COR AVE D & 70TH ST W 33.5M(110FT) N/O & 9M(29.5FT) W/O C/L INT MKD (BM 119-6 1961)	L 2129
BASELINE ( 2010 )	2,491.801 759.503	CSBM MON 1FT DN @ SE COR 110TH ST W & AVE D-8 72.2FT S/O & 32.2FT E/O C/L INT MKD (BM 119-42 1961) MKR POST 2FT W/O MON	L 2131
BASELINE ( 2010 )	2,484.185 757.182	CS MON IN WELL 1.5FT DN @ C/L INT 110TH ST W & AVE E MKD (SEC COR 23,24,25,26,R14W,T8N)	L 2132
BASELINE ( 2010 )	2,497.120 761.124	CS MON IN WELL 450MM(1.5FT) DN @ C/L INT 110TH ST W & AVE E-8 10.7M(35.1FT) E/O PP #1222609 MKD (CO SUR 1/4 SEC COR 25,26,T8N,R14W)	L 2134
BASELINE ( 2010 )	2,499.211 761.762	CSBM MON 150MM(0.5FT) DN @ SW COR 110TH ST W & AVE E-8 33.5M(110FT) S/O & 10M(32.8FT) W/O C/L INT MKD (BM 119-44 1961) MKR POST 600MM(2FT) E/O MON	L 2135
BASELINE ( 2010 )	2,519.060 767.812	CSBM MON FL 259FT S/O C/L FUT AVE F & 35.1FT W/O C/L 110TH ST W MKD (BM 119-45 1961) MKR POST 2.3FT E/O MON	L 2137
BASELINE ( 2010 )	2,497.337 761.191	CS MON IN WELL 1FT DN @ C/L INT 110TH ST W & AVE G-8 MKD (1/4 COR 1,2,R14W,T7N)	L 2143
BASELINE ( 2010 )	2,501.947 762.596	CSBM MON 35.1FT W/O C/L 110TH ST W & 364FT S/O AVE G-8 MKD (BM 119-21 1961) MKR 2FT E/O MON	L 2144
BASELINE ( 2010 )	2,499.632 761.890	CS MON IN WELL 2FT DN @ C/L INT 110TH ST W & AVE H MKD (SEC COR 1,2,11,12,T7N,R14W)	L 2145
BASELINE ( 2010 )	2,502.983 762.912	CS MON IN WELL 1FT DN @ C/L INT 110TH ST W & AVE H-8 MKD (1/4 COR 11,12,T7N,R14W)	L 2147
BASELINE ( 2010 )	2,507.580 764.313	CS MON IN WELL @ C/L INT 110TH ST W & AVE I-8 MKD (1/4 COR 13,14,T7N,R14W,RE 5869)	L 2149

QUAD YEAR	ELEV FOOT/METER	DESCRIPTION	BM NUMBER
BASELINE ( 2010 )	2,538.502 773.738	USC&GS MON FLUSH @ SW COR AVE J & 110TH ST W 44.9FT W & 39.4FT S/O C/L INT MKD (SUR 1932) MKR POST 1.1FT W/O MON	L 2152
BASELINE ( 2010 )	2,348.410 715.798	CSBM MON FL @ SW COR 90TH ST E & AVE E-8 56' S & 27' W/O C/L INT MKD (116-7 1961) MKR POST 10" E/O MON	L 2166
BASELINE ( 2010 )	2,383.908 726.617	CS MON IN WELL 10" DN @ C/L INT 90TH ST E & AVE G-8 MKD (1/4 SEC 5,6,R10W,T7N,RE 5869)	L 2167
BASELINE ( 2010 )	2,402.120 732.168	CS MON IN WELL 9" DN @ C/L INT 90TH ST E & AVE H-8 MKD (1/4 COR 7,8,T7N,R10W,RE5869)	L 2168
LANCASTER ( 2012 )	2,325.932 708.946	USC&GS MON 0.5FT UP @ SW COR AVE E & 60TH ST E 19.7FT S/O & 35FT W/O C/L INT 5FT W/O PP #193100E MKD (S 1155 1961)	L 2173
LANCASTER ( 2012 )	2,319.145 706.878	CSBM MON 0.5FT UP 26FT S/O & 15FT E/O C/L INT AVE E & 40TH ST E 6FT SE/O PP #2115824E MKD (BM 106-132 1959) MKR POST 1FT S/O MON	L 2175
LANCASTER ( 2012 )	2,314.368 705.421	CSBM MON 0.5FT UP @ SE COR AVE E & 30TH ST E 32.8FT E/O & 26.9FT S/O C/L INT MKD (BM 106-134 1959) MKR POST 2FT S/O MON	L 2176
LANCASTER ( 2012 )	2,346.063 715.082	L&T IN N CB 1FT E/O BCR @ NE COR AVE G & 30TH ST E 77.1FT E/O & 42.7FT N/O C/L INT	L 2177
LANCASTER ( 2012 )	2,389.485 728.317	USC&GS MON FL @ SE COR AVE I & 50TH ST E 3.3FT S/O PP #1122574E 75.5FT E/O & 26.2FT S/O C/L INT MKD (G 1154 1961)	L 2181
LANCASTER ( 2012 )	2,393.337 729.491	CSBM MON 144.4FT W/O & 23FT N/O C/L INT AVE I & 55TH ST E MKD (BM 107-23 1961) MKR POST 2FT S/O MON	L 2182
LANCASTER ( 2012 )	2,316.439 706.053	CSBM MON FL 65' S. & 25' W/O CL INT AVE E & 25TH ST E. MKD (BM 106-135 1959) 4' W/O PP#735754E	L 2184
LANCASTER ( 2012 )	2,306.255 702.949	CSBM MON 0.5FT UP 28FT E/O & 36FT S/O C/L INT AVE E & 15TH ST E (PROP) 5FT S/O PP #1270606E MKD (BM 106-137 1959)	L 2185
BASELINE ( 2010 )	2,491.385 759.376	CS MON IN WELL 350MM(1.1FT) DN @ C/L INT 90TH ST E & AVE K-8 MKD (1/4 SEC COR 29,30,R10W,T7N)	L 2189
BASELINE ( 2010 )	2,514.786 766.509	CS MON IN WELL 300MM(1FT) DN @ C/L INT 90TH ST E & FUT AVE L-8 MKD (CO SURV 1/4 31,32,R10W,T7N)	L 2190
LANCASTER ( 2012 )	2,302.741 701.878	USC&GS REF MON 0.6FT UP 187FT W/O C/L SIERRA HWY & 0.4M) N/O AVE F MKD (OBAN NO 1 1941) MKR POST 2FT UP & 1FT E/O MON 600FT N/O MI MRK #4.67	L 2193
LANCASTER ( 2012 )	2,351.053 716.603	CS MON IN WELL 1.6FT DN @ C/L INT AVE G & FUT 55TH ST E MKD (1/4 COR 3,34,R12W,T7N,T8N,R11W)	L 2197
LANCASTER ( 2012 )	2,348.725 715.894	CS MON IN WELL 1.8FT DN @ C/L INT AVE G & 50TH ST E MKD (SEC COR 4,3,33,34,R11W,T7N,T8N)	L 2198
LANCASTER ( 2012 )	2,347.860 715.630	CS MON IN WELL 1.6FT DN @ C/L INT AVE G & 40TH ST E MKD (CO SUR 33,32,5,4,R11W,T7N,8N)	L 2200
LANCASTER ( 2012 )	2,451.027 747.075	DPW BM TAG IN W CB 1FT N/O BCR @ SW COR AVE L & 20TH W 39.4FT W/O & 75.5FT S/O C/L INT	L 2210

QUAD YEAR	ELEV FOOT/METER	DESCRIPTION	BM NUMBER
LANCASTER (2012)	2,426.265 739.528	L&SQ SPK IN N CB @ NE COR AVE K & 4TH ST E 59.1FT E/O & 38.1FT N/O C/L INT MKD (AV 199)	L 2212
LANCASTER (2012)	2,425.206 739.205	CS TAG IN S CB 4.9FT E/O BCR @ SE COR AVE K & DIVISION ST 80.1FT E/O & 12M S/O C/L INT	L 2213
LANCASTER (2012)	2,412.723 735.400	L&BN IN W CB 7.9FT N/O BCR @ NW COR FIG AVE & AVE K (SERV RD) 49.2FT N/O & 15.1FT W/O C/L INT	L 2217
LANCASTER (2012)	2,409.145 734.310	L&T IN N CB 6.6FT W/O C B @ NE COR 10TH ST W & AVE K 108.3FT E/O & 39.4FT N/O C/L INT	L 2218
LANCASTER (2012)	2,387.411 727.685	2IN IP W/CONC PLUG & CS TAG 4IN UP @ SW COR AVE K & 40TH ST W 49.2FT W/O & 49.2FT S/O C/L INT MKR POST 1FT S/O MON	L 2222
LANCASTER (2012)	2,316.424 706.048	CS MON IN WELL 0.7FT DN C/L INT AVE A & 20TH ST W MKD (ERN CO LACO 32,33,4,5,R12W,T8N,RE 5869)	L 2224
LANCASTER (2012)	2,317.071 706.245	CSBM MON @ SW COR AVE A & 20TH ST W 39.4FT S & 39.4FT W/O C/L INT MKD (BM 117-1 1961) MKR 2FT S/O MON	L 2225
LANCASTER (2012)	2,326.655 709.167	CSBM MON 29.5FT N/O C/L AVE A & (0.2MI W/O 25TH ST W W (PROP) 29.5FT W/O POWER LINE MKD (BM 117-3 1961) MKR POST 2FT S/O MON	L 2229
LANCASTER (2012)	2,330.888 710.457	CS MON IN WELL 0.7FT DN @ C/L INT AVE A & 30TH ST W MKD (LA & KERN CO 31-32 RE 5869)	L 2230
LANCASTER (2012)	2,331.025 710.499	CSBM MON @ SW COR AVE A & 30TH ST W 42.7FT S/O & 42.7FT W/O C/L INT MKD (BM 117-4 1961) MKR 2FT N/O MON	L 2231
LANCASTER (2012)	2,339.851 713.189	L&BN IN CONC FTG 1.2M(3.9FT) BARBED WIRE FENCE POST 12M(39.4FT) N/O & 3M(9.8FT) W/O C/L INT AVE A & 35TH ST W (PROP)	L 2233
LANCASTER (2012)	2,346.908 715.340	CS MON IN WELL 250MM(0.8FT) DN @ C/L INT AVE A 40TH ST W MKD (SEC COR 36,31,1,6,T9N,T8N,R13W,R13W)	L 2234
LANCASTER (2012)	2,346.727 715.285	CSBM MON 0.8FT UP @ SW COR AVE A & 40TH ST W 72.2FT W/O & 39.4FT S/O C/L INT MKD (BM 117-6 1961) MKR POST 2FT N/O MON	L 2235
LANCASTER (2012)	2,360.077 719.354	CSBM MON 0.8FT UP 35.1FT S/O C/L AVE A & 0.1MI W/O 45TH ST W 32.8FT E/O PP (NO#) MKD (BM 117-7 1961) MKR POST 2FT N/O MON	L 2238
LANCASTER (2012)	2,364.739 720.775	CS MON IN WELL 0.5FT DN @ C/L INT AVE A & 50TH ST W MKD (SEC COR 35,36,2,1,T8N,T9N,R13W)	L 2239
LANCASTER (2012)	2,365.338 720.957	CSBM MON 0.8FT UP @ SW COR AVE A & 50TH ST W 39.4FT W/O & 44FT S/O C/L INT MKD (BM 117-8 1961) MKR POST 2FT N/O MON	L 2240
LANCASTER (2012)	2,374.614 723.785	CSBM MON 0.8FT UP @ SW COR AVE A & 55TH ST W 29.5FT S/O & 49.2FT W/O C/L INT MKD (BM 117-9 1961) MKR POST 2FT) N/O MON	L 2242
LANCASTER (2012)	2,382.819 726.285	USC&GS MON 0.7FT DN @ SW COR AVE A & 60TH ST W 29.5FT S/O & 36.1FT W/O C/L INT MKD (LINT CORNERS 1929) MKR POST 2FT S/O MON	L 2243
LANCASTER (2012)	2,383.421 726.469	CSBM MON FL @ SE COR AVE A & 60TH ST W 64FT S/O & 30.8FT E/O C/L INT MKD (BM 117-10A 1961) MKR POST 2FT W/O MON	L 2244

QUAD YEAR	ELEV FOOT/METER	DESCRIPTION	BM NUMBER
LANCASTER ( 2012 )	2,383.070 726.362	CS MON IN WELL 14" DN @ C/L INT 60TH ST W & AVE A-8 MKD (1/4 COR 3,2,T8N,R13W)	L 2245
LANCASTER ( 2012 )	2,404.080 732.766	CSBM MON @ NW COR 80TH ST W & AVE G 95FT W & 24.9FT N/O C/L INT MKD (BM 119-14 1961) MRK POST (BENT) 2.3FT SW/O MON	L 2276
LANCASTER ( 2012 )	2,417.200 736.765	CSBM MON 0.5FT UP 230FT W/O & 24.9FT N/O C/L INT AVE G & 85TH ST W (PROP) MKD (BM 119-15 1961) MKR POST 2FT S/O MON	L 2278
LANCASTER ( 2012 )	2,454.932 748.266	CSBM MON 0.7FT UP 24.9FT N/O & 180FT W/O C/L INT AVE G & 100TH ST W (PROP) MKD (BM 119-18 1961)	L 2282
LANCASTER ( 2012 )	2,462.937 750.705	CS MON IN WELL 1' DN @ C/L INT AVE G & 105TH ST W (PROP) MKD (1/4 COR 36,1,R14W,T8N,T7N)	L 2283
LANCASTER ( 2012 )	2,306.756 703.101	CSBM MON 0.7FT UP @ SW COR AVE F & PROP 15TH ST W 42.7FT W/O & 39.4FT S/O C/L INT MKD (CO SUR BM AVA 14 RE 63) MRK POST 2FT N/O MON	L 2290
LANCASTER ( 2012 )	2,314.826 705.561	CSBM MON @ SE COR AVE F & 25TH ST W 39.4FT E/O & 39.4FT S/O C/L INT MKD (AVA 12 RE 63) MKR 2FT N/O MON	L 2293
LANCASTER ( 2012 )	2,318.818 706.778	CS MON 0.5FT DN @ C/L INT AVE F & 30TH ST W MKD (SEC COR 30-29-31-32-T8N-R12W-RE 5869)	L 2295
LANCASTER ( 2012 )	2,327.961 709.565	CSBM MON @ SW COR AVE F & 40TH ST W 34.1FT S/O & 34.1FT W/O C/L INT MKD (BM 103-7 1957) MKR POST 2.5FT S/O MON	L 2300
LANCASTER ( 2012 )	2,333.940 711.387	CSBM MON 0.7FT UP @ C/L 45TH ST W & 39.4FT S/O C/L AVE F MKD (BM AVA 8 RE 63) MKR POST 2FT N/O MON	L 2301
LANCASTER ( 2012 )	2,340.490 713.384	CSBM MON FL 42.7FT S/O & 41FT W/O C/L INT AVE F & 50TH ST W 36.1FT W/O GATE POST TO FOX AIRFIELD MKD (BM 103-9A 1962) MKR POST 2FT N/O MON	L 2303
LANCASTER ( 2012 )	2,347.041 715.380	CS MON @ SE COR AVE F & 55TH ST W (PROP) 39.4FT S & 39.4FT E/O C/L INT MKD (AVA 6 RE 63) 39.4FT E/O FENCE COR MRK POST 2FT N/O MON	L 2304
LANCASTER ( 2012 )	2,440.392 743.834	L&BN IN CONC SADDLE FOR PIPE @ NE COR 90TH ST W & AVE A-8 39.4FT N/O & 52.5FT E/O C/L INT	L 2316
LANCASTER ( 2012 )	2,444.558 745.104	CS MON IN WELL 0.8FT DN @ C/L INT AVE A & 95TH ST W MKD (KERN CO,LACO 31,6,T8N,T9N,R13W)	L 2320
LANCASTER ( 2012 )	2,460.715 750.028	MON IN WELL 300MM(1FT) DN @ C/L INT AVE A & 100TH ST W MKD (KERN CO LACO 36,31,1,6,T8N,T9N,R13W,R14W)	L 2322
LANCASTER ( 2012 )	2,474.842 754.334	CS MON IN WELL 1.3FT DN @ C/L INT AVE A & 105TH ST W MKD (1/4 COR KERN CO LA 36,1,T8N,T9N,R14W)	L 2324
LANCASTER ( 2012 )	2,486.749 757.963	CS MON IN WELL 2FT DN @ C/L INT 110TH ST W & AVE A MKD (35,36,2,1,R14W,T8N,T9N)	L 2326
BASELINE ( 2010 )	2,488.754 758.575	CS MON IN WELL 1FT DN @ C/L INT 110TH ST W & AVE A-8 MKD (1/4 COR 2,1,T8N,R14W)	L 2328
BASELINE ( 2010 )	2,485.458 757.570	CS MON IN WELL 1.8FT DN @ C/L INT 110TH ST W & AVE B MKD (2,1,11,12,R14W,T8N)	L 2329



QUAD YEAR	ELEV FOOT/METER	DESCRIPTION	BM NUMBER
BASELINE ( 2010 )	2,487.100 758.070	CS MON IN WELL 1.3FT DN @ C/L INT 110TH ST W & FUT AVE B-8 MKD (1/4 COR 11,12,R14W,T8N)	L 2331
BASELINE ( 2010 )	2,486.252 757.812	CS MON IN WELL 1.6FT DN @ C/L INT 110TH ST W & AVE C MKD (11,12,13,14,R14W,T8N)	L 2333
BASELINE ( 2010 )	2,488.959 758.637	CSBM MON 0.5FT DN @ SE COR 110TH ST W & AVE C 85.3FT S/O & 26.9FT E/O C/L INT MKD (BM 119-39 1961) MKR POST 2FT W/O MON	L 2334
BASELINE ( 2010 )	2,485.437 757.563	CS MON IN WELL 1.3FT DN @ C/L INT 110TH ST W & AVE C-8 MKD (1/4 COR 14,13,T8N,R14W)	L 2335
BASELINE ( 2010 )	2,488.395 758.465	CSBM MON 0.5FT UP @ SW COR 110TH ST W & AVE C-8 95.1FT S & 30FT W/O C/L INT MKD (BM 119-40 1961) MKR POST 2FT E/O MON	L 2336
LANCASTER ( 2012 )	2,434.651 742.084	CS MON IN WELL 0.5FT DN @ C/L INT 30TH ST E & AVE K-8 MKD (1/4 SEC COR 30,29,T7N,R11W,RE 5869)	L 2364
LANCASTER ( 2012 )	2,428.965 740.351	CS MON IN WELL 1.5FT DN @ C/L INT AVE K & 40TH ST E MKD (20,21,29,28,R11W,T7N)	L 2368
LANCASTER ( 2012 )	2,446.149 745.588	L&BN 2FT W/O SE COR CONC SLAB 75.5FT N/O & 90FT W/O C/L INT AVE K & FUT 65TH ST MKD (BM)	L 2374
LANCASTER ( 2012 )	2,420.324 737.717	RDBM MON IN WELL 0.7FT DN @ SW COR AVE J & 70TH ST E 39.4FT S & 55.8FT W/O C/L INT 9.8FT W/O PP #1885797E MKR POST 2FT S/O MON	L 2377
LANCASTER ( 2012 )	2,409.967 734.560	2IN IP W/CE TAG IN WELL 1FT DN @ C/L INT 70TH ST E & AVE I-8 (NW EDGE OF PIPE)	L 2378
LANCASTER ( 2012 )	2,341.328 713.639	CS MON IN WELL 1.6FT DN @ C/L INT 50TH ST E & FUT AVE F-8 MKD (1/4 COR 33,34,R11W,T8N)	L 2451
LANCASTER ( 2012 )	2,316.715 706.137	CS MON IN WELL 0.7FT DN @ C/L INT 30TH ST W & AVE H MKD (5,6,7,8,R12W,T7N RCE 30651) RESET	L 2459
LANCASTER ( 2012 )	2,317.096 706.253	PM IN NW RIM 2IN IP WITH CONC PLUG & CS TAG 0.5FT DN @ SE COR 30TH ST W & AVE H 62.3FT S/O & 62.3FT E/O C/L INT MKR POST 2FT W/O MON	L 2460
BASELINE ( 2010 )	2,555.755 778.996	CS MON IN WELL 2' DN @ C/L INT 90TH ST E & AVE N MKD (5,6,7,8,T6N,R10W)	L 2608
BASELINE ( 2010 )	2,528.478 770.682	CSBM MON FLUSH @ SW COR AVE N & 75TH ST E 75FT S & 15FT W/O C/L INT MKD (BM 108-14 1961)	L 2642
BASELINE ( 2010 )	2,464.268 751.111	RDBM TAG IN CONC FTG BREATHER PIPE @ NW COR 50TH ST E & AVE M-8 11' N & 32' W/O C/L INT	L 2757
LANCASTER ( 2012 )	2,422.079 738.252	CS MON IN WELL 1.3FT DN @ C/L INT AVE A & 85TH ST W MKD (1/4 COR 5,32,T8N,T9N,R13W)	L 3201
LANCASTER ( 2012 )	2,423.765 738.766	L&T IN E EDGE ELY DRWY TO HSE @ NE COR AVE A & 85TH ST W 16.8M(55.1FT) N/O & 52M(170.6FT) E/O C/L INT MKD (BM)	L 3202
LANCASTER ( 2012 )	2,414.622 735.979	CS MON IN WELL 1.3FT DN @ C/L INT AVE A & 80TH ST W MKD (SEC COR 4,5,32,33,T8N,T9N,R13W)	L 3203

QUAD YEAR	ELEV FOOT/METER	DESCRIPTION	BM NUMBER
LANCASTER ( 2012 )	2,415.845 736.352	CSBM MON FL @ SE COR AVE A & 80TH ST W 26.2FT S/O & 105FT E/O C/L INT MKD (BM 117-14 1961) @ HSE #7838	L 3204
LANCASTER ( 2012 )	2,406.305 733.444	CS MON IN WELL @ C/L INT AVE A & 75TH ST W MKD (1/4 COR 33,4,T8N,T9N,R13W)	L 3205
LANCASTER ( 2012 )	2,409.098 734.295	CSBM MON 0.5FT UP ON POLE LINE 98.4FT S/O C/L INT AVE A & 75TH ST W MKD (BM 117-13 1961) MKR POST 3.3FT E/O MON	L 3206
LANCASTER ( 2012 )	2,391.293 728.868	CSBM MON FL @ SW COR AVE A & 65TH ST W 29.5FT S/O & 95.1FT W/O C/L INT MKD (BM 117-11 1961) MKR POST 2FT N/O MON	L 3209
LANCASTER ( 2012 )	2,389.656 728.369	CS MON IN WELL 0.8FT DN @ C/L INT AVE A & 65TH ST W MKD (3,34,T8N,T9N,R13W,RE 5869)	L 3210
LANCASTER ( 2012 )	2,322.185 707.804	CSBM MON 0.5FT UP 32.8FT S/O C/L AVE A & 0.1MI E/O (PROP) 25TH ST W MKD (BM 117-28 1967) MKR POST 2FT E/O MON	L 3211
LANCASTER ( 2012 )	2,390.532 728.636	CS MON IN WELL 0.7FT DN @ C/L INT 30TH ST E & LANCASTER BLVD MKD (1/4 COR 18,17,T7N,R11W)	L 3213
LANCASTER ( 2012 )	2,410.232 734.641	CS MON IN WELL 1.6FT DN @ C/L INT 30TH ST E & AVE J-8 MKD (1/4 COR 19,20,T7N,R11W)	L 3217
LANCASTER ( 2012 )	2,420.264 737.699	CS MON IN WELL 1.1FT DN @ C/L INT AVE K & 25TH SE E MKD (1/4 COR T7N,R11W,RE 5869,1930)	L 3225
LANCASTER ( 2012 )	2,430.177 740.720	L&BN IN CONC FTG OF FENCE @ SE COR AVE K & 40TH ST E 60FT S/O & 61FT E/O C/L INT MKD (BM)	L 3227
LANCASTER ( 2012 )	2,444.658 745.134	RDBM MON IN WELL 26.2FT N/O & 24FT W/O C/L INT AVE K & FUT 65TH ST E 3.9FT N/O PP (NO #) MKD (1968) MKR POST 2FT N/O MON	L 3231
LANCASTER ( 2012 )	2,450.236 746.834	RDBM MON IN WELL 24.9FT N/O & 137.8FT E/O C/L INT AVE K & FUT 75TH ST E 4.9FT W/O PP #K10483Y MKD (1968) MKR POST 2FT N/O MON	L 3234
LANCASTER ( 2012 )	2,352.446 717.028	L&BN IN CONC CB OF PARKING LOT @ SE COR AVE I & 60TH ST W 47.9FT S/O & 65.6FT E/O C/L INT MKD (BM)	L 3239
LANCASTER ( 2012 )	2,354.369 717.614	CS MON IN WELL 1.5FT DN @ C/L INT 60TH ST W & PROP AVE H-8 MKD (1/4 COR 10,11,T7N,R13W,RE 62)	L 3240
LANCASTER ( 2012 )	2,383.078 726.364	CS MON IN WELL 0.8FT DN @ C/L INT AVE I & 40TH ST E MKD (8,9,17,16,T7N,R11W)	L 3249
LANCASTER ( 2012 )	2,388.123 727.902	CS MON IN WELL 1FT DN @ C/L INT AVE I & 50TH ST E MKD (9,10,16,15,T7N,R11W,RE 5869)	L 3250
LANCASTER ( 2012 )	2,399.379 731.333	CS MON IN WELL 0.5FT DN @ C/L INT AVE I & 70TH ST E MKD (SEC COR 11,12,14,13,T7N,R11W)	L 3252
LANCASTER ( 2012 )	2,421.297 738.014	USGS MON 3IN UP ON C/L WOOD AVE F & 39.4FT W/O C/L 90TH ST W MKD (R 42 1929 RESET 1958) MKR POST 1FT E/O MON	L 3255
LANCASTER ( 2012 )	2,318.543 706.694	RDBM MON IN WELL 0.7FT DN @ NW COR 30TH ST W & PROP AVE G-8 62.3FT W/O & 57.1FT N/O C/L INT MKR POST 2FT W/O MON	L 3267

QUAD YEAR	ELEV FOOT/METER	DESCRIPTION	BM NUMBER
LANCASTER (2012)	2,354.150 717.547	RDBM MON IN WELL @ SW COR 60TH ST E & AVE G 34.1FT W/O & 24.9FT S/O C/L INT MKD (1968) MKR POST 2FT S/O MON	L 3268
LANCASTER (2012)	2,400.601 731.705	CSBM MON FL @ NW COR 50TH ST E & LANCASTER BLVD 157.5FT N/O & 47.9FT W/O C/L INT MKD (BM 120-9A 1966) MKR POST 2FT E/O MON	L 3270
LANCASTER (2012)	2,416.205 736.462	CS MON IN WELL 1.7FT DN @ C/L INT 50TH ST E & AVE J MKD (SEC COR 16,15,21,22,T7N,R11W)	L 3272
LANCASTER (2012)	2,456.824 748.842	CS MON IN WELL 2FT DN @ C/L INT 50TH ST E & AVE L MKD (SEC COR 28,27,33,34,T7N,R11W)	L 3279
LANCASTER (2012)	2,350.206 716.345	2IN IP & CE TAG 0.5FT UP @ SW COR AVE G & FUT 45TH ST E 49.2FT W/O & 49.2FT S/O C/L INT MKR POST 1FT S/O MON	L 3285
LANCASTER (2012)	2,347.974 715.665	RDBM MON IN WELL 0.5FT DN @ NW COR AVE G & 40TH ST E 29.5FT W/O & 55.8FT N/O C/L INT MKD (1966) MKR POST 2FT N/O MON	L 3286
LANCASTER (2012)	2,347.810 715.615	CHIS X ON S EDGE 2IN IP & CE TAG 0.5FT UP @ SW COR AVE G & FUT 35TH ST E 49.2FT S/O & 49.2FT W/O C/L INT 82FT W/O MI MKR #3.51 MKR POST 1FT N/O MON	L 3288
LANCASTER (2012)	2,333.596 711.282	CHIS X S EDGE 2IN IP & CS TAG 0.5FT UP @ SE COR AVE G & FUT 15TH ST E 49.2FT S/O & 49.2 E/O C/L INT MKR POST 1FT W/O MON	L 3293
LANCASTER (2012)	2,332.335 710.898	CS MON IN WELL 1.6FT DN @ C/L INT FUT 15TH ST E & AVE G MKD (1/4 COR 36,1,T7N,T8N,R12W,RE 5869)	L 3294
LANCASTER (2012)	2,328.892 709.848	2IN IP W/CONC PLUG & NAIL 1.6FT UP 49.2FT N & 49.2FT E/O C/L INT AVE G & 5TH ST E MKR 1FT S/O MON	L 3297
LANCASTER (2012)	2,389.539 728.334	L&T IN N CB 1FT W/O BCR @ NW COR AVE K & 30TH ST W 39.4 N/O & 67FT W/O C/L INT	L 3300
LANCASTER (2012)	2,328.886 709.847	CS MON IN WELL 0.8FT DN @ C/L INT 50TH ST E & FUT AVE E-8 MKD (27,28,T8N,R11W)	L 3302
LANCASTER (2012)	2,335.179 711.765	CS MON IN WELL 0.8FT DN @ C/L INT 50TH ST E & AVE F MKD (SEC COR 33,34,27,28,T8N,R11W)	L 3303
LANCASTER (2012)	2,317.981 706.523	1.5IN IP 0.7FT DN @ SE COR 30TH ST W & FUT AVE E-8 59.1FT S/O & 59.1FT E/O C/L INT MKR 2FT W/O MON	L 3311
LANCASTER (2012)	2,317.098 706.254	RDBM MON IN WELL 10" DN @ SE COR 30TH ST W & AVE E 78.7FT S/O & 78.7FT E/O C/L INT, 6' N/O PP#1295351	L 3313
LANCASTER (2012)	2,329.034 709.892	2IN IP 0.5FT UP 49.2FT E/O C/L 30TH ST W ON C/L FUT AVE C-8 (USE N EDGE) MKR POST 1FT S/O MON	L 3316
LANCASTER (2012)	2,330.398 710.307	2IN IP W/CS TAG 4IN UP @ SW COR AVE A-8 & 30TH ST W 39.4FT S/O & 49.2FT W/O C/L INT (USE E EDGE) MKR POST 1FT S/O MON	L 3322
LANCASTER (2012)	2,647.884 807.077	RDBM MON IN WELL @ NE COR AVE K & FUT 105TH ST W 14M(46FT) N/O & 46FT W/O C/L INT MKR 2FT N/O MON	L 3323
LANCASTER (2012)	2,379.725 725.342	CS MON IN WELL 0.7FT DN @ C/L INT AVE K & FUT 65TH ST W MKD (1/4 COR 22,27,T7N,R13W)	L 3326

QUAD YEAR	ELEV FOOT/METER	DESCRIPTION	BM NUMBER
BASELINE ( 2010 )	2,539.755 774.120	USC&GS REF MON FL 41FT S/O & 108.3 W/O C/L INT 110TH ST W & AVE J MKD (SUR 2 NO 5 1968)	L 3635
BASELINE ( 2010 )	2,490.462 759.095	CSBM MON 1.5FT DN @ SW COR 110TH ST W & AVE D 86.9FT S/O & 29.5FT W/O C/L INT MKD (BM 119-41 1961) MKR POST 2FT E/O MON	L 3636
LANCASTER ( 2012 )	2,339.308 713.023	CSBM MON 3IN UP 56FT N/O & 5FT W/O C/L INT AVE E & 85TH ST E MKD (BM 106-123 1959) MKR POST 2FT S/O MON	L 3641
LANCASTER ( 2012 )	2,336.789 712.255	CSBM MON FL 25FT S/O & 27FT E/O C/L INT AVE E & 80TH ST E MKD (BM 106-124 1959) MKR POST 2FT S/O MON	L 3642
LANCASTER ( 2012 )	2,335.279 711.795	CSBM MON IN WELL 1.4FT DN @ C/L INT AVE E & 80TH ST E MKD (24,19,25,30,T8N,R10W,11W)	L 3643
LANCASTER ( 2012 )	2,330.880 710.454	CSBM MON FL 65.6FT S/O & 18FT E/O C/L INT AVE E & 70TH ST E MKD (BM 106-126 1959) USC&GS MKR POST 1FT E/O MON	L 3646
LANCASTER ( 2012 )	2,311.480 704.541	CSBM MON FL 43FT S/O C/L AVE E & 210FT W/O C/L 20TH ST E (PROP) MKD (BM 106-136A 1966) 11.2FT S/O PP #1270615E	L 3652
LANCASTER ( 2012 )	2,405.014 733.050	RDBM TAG IN N SIDE CONC BASE OF OLD WATER WELL 62.3FT N/O & 24FT W/O C/L INT AVE I & 75TH ST E	L 3661
LANCASTER ( 2012 )	2,407.089 733.683	CSBM MON FL 42.7FT N/O & 167FT W/O C/L INT 10TH ST W & AVE K MKD (BM 105-6 1958)	L 3709
LANCASTER ( 2012 )	2,337.100 712.350	CS MON IN WELL 0.5FT DN @ C/L INT 70TH ST E & FUT AVE E-8 MKD (1/4 COR 25,26,T8N,R11W,RE 5869)	L 3717
LANCASTER ( 2012 )	2,338.129 712.664	CHIS X ON E EDGE 2IN IP W/CONC PLUG & CE TAG 0.5FT UP 32.8FT S/O & 34.1FT W/O C/L INT 70TH ST E & AVE E-8 MKR POST 1FT N/O MON	L 3718
LANCASTER ( 2012 )	2,358.970 719.016	CS MON IN WELL 1.8FT DN @ C/L INT 70TH ST E & AVE G MKD (SEC COR 35,36,2,1,T7N,R11W)	L 3721
LANCASTER ( 2012 )	2,360.056 719.347	CHIS X ON E EDGE 2IN IP & CE TAG 0.4FT UP @ SW COR AVE G & 70TH ST E 38.1FT S/O & 38.1FT W/O C/L INT MKR POST 1FT N/O MON	L 3722
LANCASTER ( 2012 )	2,368.684 721.977	CHIS X ON N EDGE 2IN IP W/CONC PLUG & CE TAG 49.2FT S/O & 49.2FT W/O C/L INT 70TH ST E & AVE G-8 MKR POST 1FT S/O MON	L 3724
LANCASTER ( 2012 )	2,380.258 725.505	LACS TAG IN SW COR OF CONC WALK 52.5FT N/O & 50.9FT E/O C/L INT 70TH ST E & AVE H	L 3725
LANCASTER ( 2012 )	2,378.141 724.860	CS MON IN WELL 1.3FT DN @ C/L INT 70TH ST E & AVE H MKD (SEC COR 11,12,2,1,T7N,R11W)	L 3726
LANCASTER ( 2012 )	2,391.435 728.912	L&T IN S SIDE BOTTOM STEP TO FRONT ENT CHURCH 101.7FT S/O & 101.7FT E/O C/L INT 70TH ST E & AVE H-8	L 3728
LANCASTER ( 2012 )	2,357.016 718.421	CS MON IN WELL 1.5FT DN @ C/L INT AVE G & 65TH ST E MKD (1/4 COR 25,24,T8N,R11W)	L 3730
LANCASTER ( 2012 )	2,363.116 720.280	RDBM MON IN WELL @ NW COR AVE G & 75TH ST E 9.8FT S/O PP #220BAC 65.6FT N/O & 15.1FT W/O C/L INT MKD (1972)	L 3733

QUAD YEAR	ELEV FOOT/METER	DESCRIPTION	BM NUMBER
LANCASTER (2012)	2,368.195 721.828	CS MON IN WELL 2IN DN @ C/L INT AVE G & FUT 80TH ST E MKD (SEC COR 36,31,1,6,T7N,T8N,R10W, R11W)	L 3734
LANCASTER (2012)	2,371.398 722.804	CS MON IN WELL 1.5FT DN @ C/L INT AVE G & FUT 85TH ST E MKD (1/4 COR 36,1,T7N,T8N,R10W)	L 3736
LANCASTER (2012)	2,373.081 723.317	2IN IP & CE TAG FLUSH 49.2FT S/O & 49.2FT E/O C/L INT AVE G & 85TH ST MKR POST 2FT N/O MON	L 3737
LANCASTER (2012)	2,358.731 718.943	RDBM TAG IN NW COR CONC BLOCK @ NE COR 50TH ST E & AVE G-8 39.4FT N/O & 65.6FT E/O C/L INT	L 3738
LANCASTER (2012)	2,366.601 721.342	CS MON 1.3FT DN @ C/L INT 50TH ST E & AVE H MKD (4,3,9,10,T7N,R11W)	L 3740
LANCASTER (2012)	2,368.301 721.860	USC&GS MON 0.5FT DN 26.2FT S/O & 32.8FT E/O C/L INT 50TH ST E & AVE H MKD (H-1154 1961) 3FT S/O PP #495959E	L 3741
LANCASTER (2012)	2,378.942 725.104	CSBM MON FL 38.1FT N/O & 24.9FT W/O C/L INT 50TH ST E & AVE H-8 MKD (BM 120-11 1961) MKR POST 2FT E/O MON	L 3742
LANCASTER (2012)	2,378.121 724.853	CS MON 1FT DN @ C/L INT 50TH ST E & AVE H-8 MKD (1/4 COR 9,10,T7N,R11W)	L 3743
BASELINE (2010)	2,769.368 844.106	RD MON FL 20' S & 28' E/O C/L INT (FUT) AVE L & 100TH ST W 56' E/O NLY MOST IRON GATE POST	L 4199
BASELINE (2010)	2,966.230 904.110	DWR MON IN N/W COR OF BRIDGE #333.76 OVER CALIF AQUEDUCT 420' N & 165'M E/O C/L INT AVE M & 90TH ST W MKD (ST CA DEPT WATER RESORCES-333.8A 1971)	L 4200
BASELINE (2010)	2,566.848 782.378	L&BR IN CONC CB 2' W/O BCR @ NW COR AVE M & 65TH ST W	L 4201
BASELINE (2010)	2,516.163 766.929	L&T IN CONC CB 2' N/O BCR @ N/E COR AVE M & 60TH ST W	L 4202
BASELINE (2010)	2,526.086 769.953	SPK IN CONC CB 2' W/O BCR @ NE COR AVE M & 10TH ST W	L 4203
BASELINE (2010)	2,532.871 772.021	RDBM TAG IN S CB 1' E/O BCR @ SE COR AVE M & SIERRA HWY	L 4218
BASELINE (2010)	2,532.226 771.825	USC&GS MON IN W END CULV HDWL 272' E C/L SIERRA HWY & 49' S/O C/L AVE M MKD (S 1219 1971)	L 4219
LANCASTER (2012)	2,327.709 709.488	RDBM MON 1FT DN 167FT E/O & 49.2FT N/O C/L INT AVE I & 40TH ST W MKD (BM 1974) 6.6FT N/O PP ( #568008E) 2' S/O MKR POST	L 4357
BASELINE (2010)	2,679.144 816.606	RDBM MON IN WELL DN 0.5FT 49.2FT N/O & 60FT E/O C/L INT AVE K & 110TH ST W MKD (BM 1974) MKR POST 2FT S/O MON	L 4358
LANCASTER (2012)	2,402.290 732.220	RDBM MON IN WELL DN 0.5FT 49FT S/O & 49FT E/O C/L INT 80TH ST W & AVE K MKD (BM 1974)	L 4359
LANCASTER (2012)	2,356.937 718.397	RDBM MON IN WELL DN 4IN 62.3FT S/O C/L AVE D & 42.7FT E/O C/L 45TH ST W 111.5FT SE/O PP #1450334E 88.6FT SW/O PP #1450333E MKD (1974)	L 4367

QUAD YEAR	ELEV FOOT/METER	DESCRIPTION	BM NUMBER
LANCASTER ( 2012 )	2,476.144 754.731	2" IP W/CONC PLUG & CS TAG 4" UP @ NW COR AVE J & 100TH ST W 40' N & 40' W/O C/L INT MKR POST 1' S/O MON	L 4368
LANCASTER ( 2012 )	2,459.739 749.731	2" IP W/CONC PLUG & CS TAG 3IN UP @ SW COR AVE I-8 & 100TH ST W 50' S & 50' W/O C/L INT MKR POST 300MM N/O MON	L 4369
BASELINE ( 2010 )	2,496.532 760.945	2IN IP W/CONC PLUG & CS TAG FL @ SE COR AVE G & 110TH ST W 49.2FT S/O & 49.2FT E/O C/L INT	L 4370
LANCASTER ( 2012 )	2,445.164 745.288	L&BRAD TAG IN CONC BASE OF STANDPIPE 63.9FT N/O & 11.6FT W/O C/L INT AVE G & PROP 95TH ST W	L 4371
LANCASTER ( 2012 )	2,340.488 713.383	2IN IP W/CONC PLUG & LACS TAG FLUSH 49.2FT N/O & 49.2FT W/O C/L INT AVE F & 50TH ST W MKR POST 2FT S/O MON	L 4373
LANCASTER ( 2012 )	2,336.992 712.317	RDBM TAG IN N EDGE OF WALK @ SW COR BRIDGE OVER (14) ANTELOPE VALLEY FRWY & AVE F	L 4374
LANCASTER ( 2012 )	2,310.313 704.186	CS MON IN WELL 0.7FT DN @ C/L INT AVE F & 20TH ST W MKD (29-28-32-33-T8N-R12W-RE 5869)	L 4375
LANCASTER ( 2012 )	2,446.971 745.839	2IN IP W/CONC PLUG & LACO ENG TAG 1FT DN 49.2FT S/O & 49.2FT E/O C/L INT 90TH ST W & AVE C-8 (USE N EDGE) MKR POST 1FT W/O MON	L 4376
LANCASTER ( 2012 )	2,447.511 746.004	2IN IP W/CONC PLUG & LACO ENG TAG 1FT DN 49.2FT N/O & 49.2FT W/O C/L INT 90TH ST W & AVE C-8 (USE E EDGE) MKR POST 1FT E/O MON	L 4377
LANCASTER ( 2012 )	2,446.200 745.604	2IN IP W/CONC PLUG & LA CO ENG TAG 3IN UP 49.2FT N/O & 49.2FT W/O C/L INT 90TH ST W & AVE C (USE W EDGE) MKR POST 1FT E/O MON	L 4378
BASELINE ( 2010 )	2,310.052 704.106	CS MON IN WELL 0.8FT DN ON C/L AVE A & 0.1M W/O C/L SIERRA HWY 114.8FT NE/O PP #1821218E MKD (1/4 COR 33,4,T8N,T9N,R12W,RE 5869,1965)	L 4382
LANCASTER ( 2012 )	2,357.248 718.491	RDBM MON IN WELL 1FT DN @ NE COR 60TH ST W & AVE E-8 PROP 55.8FT N/O & 55.8FT E/O C/L INT MKD (BM 1974) MKR POST 2.3FT E/O MON	L 4384
LANCASTER ( 2012 )	1.000 0.305	1.5IN IP CONC PLUG & BR 0.7FT DN 59.1FT N/O & 59.1FT E/O C/L INT 30TH ST W & FUT AVE A-8 MKR 2FT E/O MON	L 4396
LANCASTER ( 2012 )	2,330.495 710.337	2" IP CONC PLUG & CE TAG UP 6" 50' S & 50' E/O C/L INT 30TH ST W & AVE B-8 MKR POST 1.5' E/O MON	L 4398
LANCASTER ( 2012 )	2,319.533 706.996	CS MON IN WELL 0.7FT DN @ C/L INT 30TH ST W & AVE F-8 MKD (1/4 COR 31,32,T8N,R12W,RE 5869) WELL COVER MARKED "WATER"	L 4401
LANCASTER ( 2012 )	2,315.481 705.761	CS MON IN WELL 1FT DN @ C/L INT 30TH ST W & AVE H-8 MKD (1/4 COR 7,8,T7N,R12W,RE 7078)	L 4403
LANCASTER ( 2012 )	2,305.664 702.769	USC&GS MON 91.9FT E/O C/L SIERRA HWY & 1450FT S/O AVE F MKD (Y-56 RESET 1971) MKR 1FT S/O MON	L 4408
LANCASTER ( 2012 )	2,327.492 709.422	CS MON IN WELL 0.7FT DN @ C/L INT AVE G & 5TH ST E MKD (1/4 COR 35,2,T7N,T8N,R12W,RE 7078)	L 4409

QUAD YEAR	ELEV FOOT/METER	DESCRIPTION	BM NUMBER
LANCASTER ( 2012 )	2,330.723 710.407	CS MON IN WELL 0.8FT DN @ C/L INT AVE G & 10TH ST E MKD (35,36,2,1,T7N,T8N,R12W,RE 5869)	L 4410
LANCASTER ( 2012 )	1.000 0.305	L&T IN E CB 1FT N/O BCR @ NE COR AVE I & 30TH ST E 78.7FT N/O & 42.7FT E/O C/L INT	L 4415
BASELINE ( 2010 )	2,788.225 849.854	CALIF DIV OF HWY MON 4IN UP 52.5FT W C/L 110TH ST W & 0.3M) S/O AVE K MKD (DEL SUR G10 1972) MKR POSTS 3.3FT N/O MON & 3.9FT S/O MON	L 4418
BASELINE ( 2010 )	2,587.850 788.779	CSBM MON 4IN UP 64FT S/O & 59.1FT W/O C/L INT 110TH ST W & AVE J-8 MKD (119-26A 1972) MKR POST 1FT E/O MON	L 4419
BASELINE ( 2010 )	2,507.850 764.395	CSBM MON FL 55.8FT E/O C/L 110TH ST W & 348FT S/O AVE I-8 MKD (119-24A 1972) MKR POST 2FT E MON	L 4420
BASELINE ( 2010 )	2,491.095 759.288	1.5IN IP W/CONC PLUG & BR 0.5FT DN 52.5FT W C/L INT 110TH ST W & AVE F-8 20.8M SWLY/O PP #1222583 MKR POST 9.8FT S/O MON (USE NW EDGE)	L 4421
BASELINE ( 2010 )	2,488.546 758.511	CS MON IN WELL 0.8FT DN @ C/L INT 110TH ST W & AVE D-8 MKD (1/4 COR 23,24,T8N,R14W,RE 7078)	L 4422
BASELINE ( 2010 )	2,488.052 758.361	RDBM MON IN WELL 0.3FT DN 170.6FT N/O & 41FT W/O C/L INT 110TH ST W & AVE B-8 6.6FT W/O PP #1222691 MKD (1974) MKR POST 2FT W/O MON	L 4423
LANCASTER ( 2012 )	2,438.864 743.368	RDBM MON IN WELL 0.5FT DN 82FT N/O & 27.9FT W/O C/O INT AVE A-8 & 90TH ST W MKR POST 2.3FT W/O MON	L 4427
LANCASTER ( 2012 )	2,386.996 727.559	2IN IP CONC PL & NAIL 0.7FT UP 39.4FT N/O & 39.4FT W/O C/L INT AVE C-8 & 60TH ST W (USE E EDGE) MKR POST 1FT E/O MON	L 4428
LANCASTER ( 2012 )	2,384.880 726.914	CS MON IN WELL 10" DN @ C/L INT 60TH ST W & AVE B-8 MKD (1/4 SEC COR T8N,R13W,20,21,1928)	L 4430
LANCASTER ( 2012 )	2,360.373 719.444	L&T IN N CB 2' E/O BCR @ NE COR AVE I & 10TH ST E(CHALLENGER WAY) 42.7FT N & 78.7FT E/O C/L INT	L 4443
LANCASTER ( 2012 )	2,319.101 706.864	RDBM TAG NR N END CONC HDWL 24.9FT E/O C/L SIERRA HWY & 1584FT S/O AVE G @ MI MKR #6.35	L 4455
BASELINE ( 2010 )	2,480.202 755.968	RD MON IN CONC 1' DN @ NE COR AVE M & 50TH ST E 49' N & 49' E/O C/L INT (BENT OVER MKR POST 2' W/O MON) MKD (LA CO RD DEPT)	L 4465
LANCASTER ( 2012 )	2,367.520 721.622	RDBM MON IN WELL 184FT N/O & 29.5FT W/O C/L INT 70TH ST E & AVE G-8 MKD (1974) 4.9FT W/O PP #549535E MKR POST 1FT W/O MON	L 4476
LANCASTER ( 2012 )	2,352.710 717.108	RDBM MON IN WELL 23.9FT N/O & 30.8FT W/O C/L INT 70TH ST E & AVE F-8 MKD (1974) MKR 2FT W/O MON	L 4477
BASELINE ( 2010 )	2,527.157 770.280	RDBM MON IN WELL 330' N & 36' E/O C/L INT 90TH ST E & AVE M MKD (1974) MKR POST 2' E/O MON	L 4479
LANCASTER ( 2012 )	2,463.390 750.844	CSBM MON FL @ SW COR AVE A & 100TH ST W 36.1FT W/O & 27.9FT S/O C/L INT MKD (BM 117-18A 1976) MKR POST 2FT N/O MON	L 4546
LANCASTER ( 2012 )	2,369.487 722.222	RD MON ON W SIDE 30TH ST E 54.1FT W/O C/L & 24.9FT S/O C/L AVE H-8 TO E MKD (1977) MKR POST 3FT E/O MON	L 4570

QUAD YEAR	ELEV FOOT/METER	DESCRIPTION	BM NUMBER
BASELINE (2010)	2,504.062 763.240	RDBM MON IN WELL 4" DN @ SE COR AVE N & 50TH ST E 72' E & 45' S/O C/L INT 4' S/O PP# 1707743E MKD (1981) MKR BENT OVER 4' E/O MON	L 4708
LANCASTER (2012)	2,417.183 736.760	RDBM MON IN WELL 216FT W/O C/L 50TH ST E & 29.5FT S/O C/L AVE J 3.9FT E/O PP #885864E MKD (1981)	L 4755
LANCASTER (2012)	2,304.675 702.467	RDBM TAG IN CONC WINGWALL 22FT S/O C/L AVE F & 73.2 W/O SIERRA HWY	L 4757
LANCASTER (2012)	2,330.506 710.340	RDBM TAG IN CTR E CONC HDWL 26.2FT E/O C/L 30TH ST W (TRAVELED RD) & 213FT N/O C/L FUT AVE C-8	L 4759
LANCASTER (2012)	2,330.356 710.295	CS MON IN WELL 0.8FT DN ON C/L AVE C & 16.4FT E/O APPARENT C/L 30TH ST W MKD (7,8,18,17,T8N,R12W)	L 4760
LANCASTER (2012)	2,475.523 754.542	1.5IN IP 1.1FT DN ON C/L 105TH ST W & 55.8FT S/O AVE D MKR POST 1.5FT E/O PIPE	L 4761
LANCASTER (2012)	2,477.445 755.128	RDBM TAG IN NE COR CONC WELL SLAB 124.7FT S/O C/L AVE D & 131FT W/O C/L 105TH ST W (PROP) 157FT W/O POWER POLE LINE 8.2FT S/O CONC STAND PIPE	L 4762
LANCASTER (2012)	2,377.044 724.525	RDBM TAG IN CONC STEP @ NW COR BLDG #7344 AVE I 151FT E/O & 111.5FT S/O C/L INT AVE I & 75TH ST W	L 4763
LANCASTER (2012)	2,387.512 727.716	RDBM TAG IN S CB 1FT W/O WLY DRWY TO PARK 42.7FT S/O & 98.4FT E/O C/L INT 35TH ST W & AVE K	L 4775
LANCASTER (2012)	2,385.750 727.179	RDBM TAG IN S CB 1FT E/O BCR @ SE COR AVE K & 40TH ST W 42.7FT S/O & 78.7FT E/O C/L INT	L 4776
LANCASTER (2012)	2,338.120 712.661	RDBM TAG IN SW CB RET 68.9FT S/O & 39.4FT W/O C/L INT SIERRA HWY & AVE I	L 4779
LANCASTER (2012)	2,343.659 714.349	RDBM TAG IN S CB 2FT W/O BCR @ SW COR AVE I & DIVISION ST 39.4FT S/O & 57.1FT W/O C/L INT	L 4782
LANCASTER (2012)	2,343.992 714.451	RDBM TAG IN N CB 2FT E/O BCR @ NE COR AVE I & DIVISION ST 39.4FT N/O & 59.1FT E/O C/L INT	L 4783
LANCASTER (2012)	2,379.924 725.403	RDBM TAG IN N CB 36.1FT E/O BCR @ NE COR AVE I & 30TH ST E 114.8FT E/O & 42.7FT N/O C/L INT	L 4784
LANCASTER (2012)	2,361.273 719.718	RDBM TAG IN E CB 2FT N/O BCR @ NE COR 30TH ST W & AVE J-8 68.9 N/O & 42.7FT E/O C/L INT	L 4785
LANCASTER (2012)	2,324.520 708.516	2IN IP CONC PLUG & CO ENGR TAG 49.2FT N/O & 49.2FT W/O C/L INT AVE F & 35TH ST W (CHIS X NE EDGE) MKR POST 1FT S/O MON	L 4787
LANCASTER (2012)	2,305.046 702.580	L&T 2FT W/O E END HDWL 24.9FT N/O C/L AVE F & 450FT W/O C/L 10TH ST W (DIRT ROAD) @ MI MRK #1.06	L 4788
BASELINE (2010)	2,856.772 870.747	DPW BM TAG IN WELL 32.8FT SE/O C/L MOC JOHNSON RD & 110TH ST W 30.8FT W/O C/L PROD 110TH ST W 3FT S/O PP #2109688E MKD (BM 1990) IP MKR 3.3FT W MON	L 4936



QUAD YEAR	ELEV FOOT/METER	DESCRIPTION	BM NUMBER
BASELINE (2010)	2,669.890 813.785	DPW BM TAG IN S CB 1' E/O BCR @ SE COR AVE M & 75TH ST W	L 4938
BASELINE (2010)	2,661.505 811.229	DPW BM TAG IN N CB NR BCR @ NE COR AVE M & PARKRIDGE PL	L 4939
BASELINE (2010)	2,521.980 768.702	DPW BM TAG IN W CB OF MEDIAN 35TH ST W (PVT ST) & 57' S/O C/L INT AVE M	L 4941
BASELINE (2010)	2,523.817 769.262	DPW BM TAG NR BACK OF WALK @ SW COR AVE M & BRIDGE OVER ANTELOPE VALLEY FRWY (14)	L 4942
BASELINE (2010)	2,531.725 771.672	L&T IN CB @ BCR NE COR AVE M & 6TH ST W 40' N/O & 66' E/O CL INT	L 4943
BASELINE (2010)	2,476.190 754.745	L&T IN SE COR OF PORCH @ HSE #4503 AVE M 25' E & 103' N/O C/L (FUT) INT 45TH ST E	L 4946
BASELINE (2010)	2,491.647 759.456	DPW BM TAG IN CONC FTG OF CH LINK FENCE POST 50' S/O C/L AVE M & 192' E/O C/L (FUT) 15TH ST E (128' E/O C/L SITE #1 RD)	L 5154
BASELINE (2010)	2,473.613 753.960	DPW BM TAG IN CONC FTG CH LINK FENCE POST @ SW COR AVE M & (FUT) 25TH ST E 49' S & 40' W/O C/L INT 450' W/O DRWY TO SEWAGE TREATMENT PLANT	L 5156
BASELINE (2010)	2,473.898 754.046	DPW BM TAG IN CONC FTG CH LINK FENCE POST @ SE COR AVE M & 30TH ST E 83' E & 49' S/O C/L INT	L 5158
BASELINE (2010)	2,472.438 753.601	2" IP WITH DPM BM TAG 15" DN @ NW COR AVE M & (FUT) 35TH ST E 47' N & 49' W/O C/L INT 3' N/O PP #2297254E	L 5160
BASELINE (2010)	2,474.040 754.090	DPW BM TAG CONC FTG CH LINK FENCE POST @ SE COR AVE M & (FUT) 35TH ST E 49' S & 53' E/O C/L INT	L 5161
BASELINE (2010)	2,474.331 754.178	L&T IN CONC FTG OF CH LINK FENCE POST 368' E & 50' S/O C/L INT AVE M & (FUT) 35TH ST E 70' E/O CTR SITE 4 RD	L 5162
BASELINE (2010)	2,557.653 779.575	2" IP WITH DPW BM TAG FLUSH @ NE COR 90TH ST E & AVE N 76' E & 30' N/O C/L INT MKR POST 2' E/O MON	L 5185
BASELINE (2010)	2,528.051 770.552	2" IP WITH DPW BM TAG FLUSH @ NW COR 90TH ST E & AVE M 56' W & 31' N/O C/L INT MKR POST 2' E/O MON	L 5186
LANCASTER (2012)	2,355.971 718.102	DPW TAG IN E CB SIERRA HWY 39.4FT E/O C/L & 70.9FT N/O C/L MILLING ST	L 5195
LANCASTER (2012)	2,356.330 718.212	L&T IN N CB @ NW COR SIERRA HWY & MILLING ST 19.7FT N/O & 68.9FT W/O C/L INT	L 5196
LANCASTER (2012)	2,351.329 716.687	USC&GS BR DISK @ SE COR OF ALLEY 198FT W/O C/L SIERRA HWY & 47.9FT S/O C/L LANCASTER BLVD MKD (2356 1914 35 RESET 1961)	L 5197
LANCASTER (2012)	2,338.090 712.652	DPW BM TAG IN E CB 1FT S/O BCR @ SE COR AVE I & SIERRA HWY 91.9FT S/O & 45.9FT E/O C/L INT	L 5198
LANCASTER (2012)	2,317.948 706.513	DPW BM TAG 1FT S/O N END HDWL 24FT E/O C/L SIERRA HWY & 246FT S/O C/L AVE G	L 5201

QUAD YEAR	ELEV FOOT/METER	DESCRIPTION	BM NUMBER
LANCASTER (2012)	2,303.397 702.078	2IN IP W/DPW BM TAG @ NW COR SIERRA HWY & AVE F 68.9FT W & 95.1FT N/O C/L INT , 2' N/O MKR POST	L 5202
BASELINE (2010)	2,525.715 769.840	BM TAG S SIDE CONC FTG METAL PP #22977993 @ NW COR AVE M & 20TH ST W 49' N & 49' W/O C/L INT	L 5526
BASELINE (2010)	2,475.664 754.585	DPW BM TAG IN NE COR OF CONC BASIN @ NE COR AVE M & 40TH ST E	L 5537
BASELINE (2010)	2,715.920 827.815	LACO BM TAG IN W END ELY ROCK & CONC WALL 22' N/O C/L AVE L & 10' E/O C/L 95TH ST W	L 5595
BASELINE (2010)	2,720.275 829.142	2" IP W/CONC PLUG & CE TAG FLUSH 40' W & 36' S/O C/L INT AVE L & 95TH ST W	L 5596
BASELINE (2010)	2,957.656 901.496	DWR MON IN TOP OF N CHANNEL WALL CALIF AQUEDUCT 112' NWLY/O NW COR 90TH ST W BRIDGE MKD (333.8 BR 1987)	L 5598
BASELINE (2010)	2,612.370 796.253	LACO BM TAG IN N CB 3.3FT E/O BCR @ NE COR AVE M & 70TH ST W 38.1FT N/O & 77.1FT E/O C/L INT	L 5599
BASELINE (2010)	2,586.246 788.290	L&T IN N CB @ BCR NE COR AVE M & 67TH ST W 56' E & 33'M N/O C/L INT	L 5600
BASELINE (2010)	2,537.217 773.346	LACO BM TAG IN N CB 3' W/O BCR @ NW COR AVE M & 62ND ST W 49' W & 40' N/O C/L INT	L 5601
BASELINE (2010)	2,495.569 760.652	LACO DPW TAG IN NE CB RET 17.4FT S/O BCR @ NE COR AVE M & 50TH ST W 49.2FT N & 31.2FT E/O C/L INT	L 5602
BASELINE (2010)	2,521.307 768.497	LACO BM TAG IN NE COR CONC PAD 60' S/O C/L AVE M & 20'M W/O C/L DOUBLE GATE DRWY 0.3MI E/O 40TH ST W	L 5603
BASELINE (2010)	2,523.187 769.070	L&T IN N CB @ BCR NW COR AVE M & 22ND ST W 46' W & 37' N/O C/L INT	L 5604
BASELINE (2010)	2,670.193 813.877	CS MON IN WELL @ C/L INT AVE M & 75TH ST W MKD (1/4 SEC COR 33,4,T7N,T6N,13W)	L 5611
LANCASTER (2012)	2,515.128 766.613	DPW BM TAG IN N CB @ BCR NW COR SIERRA HWY & AVE L-12 22FT N/O & 86.9FT W/O C/L INT	L 5633
LANCASTER (2012)	2,491.145 759.303	CAL-TRANS MON IN CONC COLLAR ON C/L SIERRA HWY & 124.7FT N/O C/L AVE L-4 MKD (HST 8416 1994)	L 5634
LANCASTER (2012)	2,475.955 754.673	DPW BM TAG IN W CB 3.3FT N/O BCR 242FT N/O C/L AVE L (OVERPASS) @ NW COR SIERRA HWY & AVE L WEST BOUND OFF RAMP 91.9FT N/O & 57.1FT W/O C/L INT	L 5635
LANCASTER (2012)	2,470.072 752.880	DPW BM TAG IN W CB SIERRA HWY 61.4FT W/O C/L & 23FT S/O C/L DRWY ENT TO BLDG #42925	L 5636
LANCASTER (2012)	2,450.423 746.891	DPW BM TAG IN NW COR CONC F HYD PAD 30.5FT W/O C/L SIERRA HWY & 60.7FT N/O C/L DRWY ENT #43155	L 5637
LANCASTER (2012)	2,423.379 738.648	DPW BM TAG IN W CB 1FT S/O BCR @ SW COR COR SIERRA HWY & AVE K 42.7FT W/O & 75.5FT S/O C/L INT	L 5638

QUAD YEAR	ELEV FOOT/METER	DESCRIPTION	BM NUMBER
LANCASTER (2012)	2,398.218 730.979	DPW BM TAG IN S CB 1FT W/O BCR @ SW COR SIERRA HWY & AVE J-8 19.7FT S/O & 82FT W/O C/L INT	L 5639
LANCASTER (2012)	2,384.574 726.820	DPW BM TAG IN W CB 1.5FT N/O END CB 31.2 W/O C/L SIERRA HWY & 19.7FT N/O C/L ENT TO BLDG #44219	L 5640
LANCASTER (2012)	2,378.162 724.866	DPW BM TAG IN E CB 1FT S/O BCR @ SE COR SIERRA HWY & AVE J 57.1FT E/O & 114.8FT S/O C/L INT	L 5641
LANCASTER (2012)	2,376.446 724.343	DPW BM TAG IN W CB 1FT N/O BCR @ NW COR SIERRA HWY & AVE J 70.9FT W/O & 86.9FT N/O C/L INT	L 5642
LANCASTER (2012)	2,367.680 721.671	L&T IN W CB @ BCR SW COR SIERRA HWY & OLDFIELD ST 45.9FT W/O & 42.7FT S/O C/L INT	L 5643
LANCASTER (2012)	2,352.278 716.976	L&T IN S CB 42.7FT E/O BCR @ SE COR SIERRA HWY & LANCASTER BLVD 105FT E/O & 40.7FT S/O C/L INT	L 5644
LANCASTER (2012)	2,327.370 709.385	DPW BM TAG IN W CB 1FT S/O BCR @ SW COR SIERRA HWY & AVE H-8 65.6FT S/O & 31.2FT W/O C/L INT	L 5646
LANCASTER (2012)	2,322.807 707.994	DPW BM TAG IN W CB 1FT S/O BCR @ SW COR SIERRA HWY & AVE G-12 45.9FT W/O & 88.6FT S/O C/L INT	L 5647
LANCASTER (2012)	2,314.760 705.541	DPW BM TAG 2FT N/O S END HDWL 24.6FT E/O C/L SIERRA HWY & 0.3MI N/O AVE G @ MI MKR 5.75	L 5648
LANCASTER (2012)	2,303.345 702.062	DPW BM TAG IN S END OF E HDWL 24FT E/O C/L SIERRA HWY & 0.3MI N/O AVE E 4.9FT N/O MI MKR 3.70	L 5649
BASELINE (2010)	2,490.447 759.091	50MM(2IN) IP W/CONC PLUG & DPW BM TAG @ SW COR AVE A & 110TH ST W 16M(52.5FT) S/O & 11.5M(37.7FT) W/O C/L INT 1.5M(5FT) W/O PP #1222730	L 5652
BASELINE (2010)	2,491.700 759.472	DPW BM TAG IN TOP OF 1M(3.3FT) CONC IRRIGATION VALVE N SIDE 1.2M(3.6FT) UP @ SE COR 110TH ST W & AVE B 17.6M(57.7FT) S/O & 18.6M(61FT) E/O C/L INT	L 5653
BASELINE (2010)	2,499.650 761.896	CSBM MON FL @ SW COR 110TH ST W & AVE G 139.4FT S & 29.5FT W/O C/L INT MKD (119-20 1961 RE 5869) 48.9FT S/O PP#1222569, 1' E/O MKR POST	L 5654
BASELINE (2010)	2,503.151 762.963	CS MON FL IN CONC PAD 42.7FT W/O C/L 110TH ST W & 581FT S/O AVE G-8 105FT S/O PP #1222554 MKD (DEL SUR G 4A 1968 RE 5869) MKR 5.2FT E/O MON	L 5655
BASELINE (2010)	2,500.850 762.261	2IN IP W/CONC PLUG & DPW BM TAG @ SW COR AVE H & 110TH ST W 41F S/O & 41.7FT W/O C/L INT 4.9FT W/O PP #1222543	L 5657
BASELINE (2010)	2,538.824 773.836	USC&GS MON FL IN CONC PAD @ SW COR 110TH ST W & AVE J 49.2FT S/O & 53.1FT W/O C/L INT MKD (SUR 2 1968) MKR POST 3.9FT N/O MON	L 5658
BASELINE (2010)	2,540.682 774.402	USC&GS MON FL IN CONC PAD @ SW COR 110TH ST W & AVE J 96.5FT S/O & 54.5FT W/O C/L INT MKD (SUR 2 NO.4 1968) MKR POST 2FT S/O MON	L 5659
BASELINE (2010)	2,685.902 818.665	DPW BM TAG IN NW COR CONC GTE PAD @ SE COR AVE K & 110TH ST W 128FT E & 38.4FT S/O C/L INT	L 5660

QUAD YEAR	ELEV FOOT/METER	DESCRIPTION	BM NUMBER
BASELINE ( 2010 )	2,785.589 849.050	CAL DIV HWY MON FL 0.3M S/O AVE K & 26.2FT E/O C/L 110TH ST W MKD (DEL SUR G 10 RM 1 1972) MKR POST 2FT S/O MON	L 5661
LANCASTER ( 2012 )	2,320.728 707.360	2IN IP W/CONC PLUG & DPW BM TAG FL 3.3FT W/O PP #632512E @ NW COR AVE E & 50TH ST E 70.9FT N/O & 29.5FT W/O C/L INT	L 5666
BASELINE ( 2010 )	2,342.614 714.031	DPW BM TAG IN W SIDE CONC BASE OF SIGN POST @ NE COR AVE E & & 90TH ST E 36.1FT E & 52.5FT N/O C/L INT	L 5669
BASELINE ( 2010 )	2,502.467 762.754	50MM(2IN) IP W/CONC PLUG & DPW BM TAG FL 4.9FT E/O PP #4244909E @ SE COR 90TH ST E & AVE L 42.7FT S/O & 32.8FT E/O C/L INT	L 5670
BASELINE ( 2010 )	2,395.234 730.070	DPW BM TAG IN NELY COR OF CONC GTE CALL BOX PAD @ SW COR 90TH ST E & AVE H 110' S & 28' W/O C/L INT	L 5673
BASELINE ( 2010 )	2,393.651 729.587	DPW BM TAG IN SE COR CONC BASE FOR WATER TANK MOTOR @ NW COR 90TH ST E & AVE H 130' N & 38' W/O C/L INT	L 5674
LANCASTER ( 2012 )	2,322.823 707.999	DPW BM TAG IN CONC HDWL 2FT W/O E END @ SE COR AVE G & DIVISION ST 29.5FT E/O & 29.5FT S/O C/L INT	L 5675
LANCASTER ( 2012 )	2,331.441 710.625	DPW BM TAG IN CONC HDWL 2FT E/O W END @ NW COR AVE G & 10TH ST E 19.7FT N/O & 29.5FT W/O C/L INT	L 5676
LANCASTER ( 2012 )	2,362.724 720.160	CS MON IN WELL 1.8FT DN @ C/L INT AVE G & 75TH ST E MKD (1/4 SEC COR R11W,35,T8N)	L 5677
LANCASTER ( 2012 )	2,354.769 717.736	PLS TAG #5924 IN S CB 1FT E/O BCR @ SE COR AVE I & 5TH ST E 39.4FT S/O & 65.6FT E/O C/L INT	L 5678
LANCASTER ( 2012 )	2,365.166 720.905	L&T IN E CB 1FT N/O BCR @ NE COR AVE I & 15TH ST E 75.5FT N/O & 30.8FT E/O C/L INT	L 5679
LANCASTER ( 2012 )	2,372.923 723.269	DPW BM TAG IN CTR HDWL @ NW COR AVE I & 20TH ST E 53.8FT N/O & 26.2FT W/O C/L INT	L 5680
LANCASTER ( 2012 )	1.000 0.305	L&T IN N CB NR BCR @ NW COR AVE I & 35TH ST E 45.9FT N/O & 65.6FT E/O C/L INT	L 5683
LANCASTER ( 2012 )	2,399.225 731.286	DPW BM TAG IN E EDGE CONC DRWY TO BLDG #5850 AVE I 42.7FT S/O C/L & 131.2FT W/O C/L 60TH ST E	L 5685
LANCASTER ( 2012 )	2,396.984 730.603	CS MON IN WELL 2FT DN @ C/L INT AVE I & 60TH ST E	L 5686
LANCASTER ( 2012 )	2,397.765 730.841	CS MON IN WELL 1FT DN @ C/L INT AVE I & 65TH ST E	L 5687
LANCASTER ( 2012 )	2,410.357 734.679	2IN IP W/CONC PLUG & DPW TAG FLUSH 4.9FT S/O PP #991792E 32.8FT W & 32.8FT S/O C/L INT AVE I & 85TH ST E	L 5688
LANCASTER ( 2012 )	2,423.894 738.805	L&T IN N CB 147FT E/O BCR @ NE COR SIERRA HWY & AVE K 39.4FT N/O & 206FT E/O C/L INT	L 5690
LANCASTER ( 2012 )	2,428.679 740.264	L&T IN N CB @ BCR NE COR AVE K & 6TH ST E 39.4FT N/O & 39.4FT E/O C/L INT	L 5691

QUAD YEAR	ELEV FOOT/METER	DESCRIPTION	BM NUMBER
LANCASTER (2012)	2,438.181 743.160	L&T IN W CB 0.3FT S/O BCR @ SW COR AVE K & CHALLENGER WAY 72.2FT S/O & 39.4FT W/O C/L INT	L 5692
LANCASTER (2012)	2,437.701 743.014	DPW BM TAG IN SE CB RET 1.5FT W/O BCR @ SE COR AVE K & CHALLENGER WAY 72.2FT E/O & 39.4FT S/O C/L INT	L 5693
LANCASTER (2012)	2,435.242 742.264	L&T IN W CB 0.3FT N/O BCR @ NW COR AVE K & 15TH ST E 75.5FT N/O & 32.8FT W/O C/L INT	L 5694
LANCASTER (2012)	2,436.601 742.678	DPW BM TAG IN S CB 1FT E/O BCR @ SE COR AVE K & 15TH ST E 65.6FT E/O & 39.4FT S/O C/L INT	L 5695
LANCASTER (2012)	2,430.394 740.786	DPW BM TAG IN N CB 1FT W/O BCR @ NW COR AVE K & 20TH ST E 82FT W/O & 39.4FT N/O C/L INT	L 5696
LANCASTER (2012)	2,428.650 740.255	DPW BM TAG IN CONC BASE OF TRAFFIC SIGNAL @ SE COR AVE K & 20TH ST E 72.2FT E/O & 42.7FT S/O C/L INT	L 5697
LANCASTER (2012)	2,420.210 737.682	DPW BM TAG IN E CB1FT N/O BCR @ NE COR AVE K & 25TH ST E 75.5FT N/O & 30.8FT E/O C/L INT	L 5698
LANCASTER (2012)	2,422.100 738.258	DPW BM TAG IN N CB 3.3FT W/O BCR @ NW COR AVE K & 30TH ST E 78.7FT W & (39.4FT N/O C/L INT	L 5699
LANCASTER (2012)	2,423.466 738.675	DPW BM TAG IN S CB 1FT E/O BCR @ SE COR AVE K & 30TH ST E 92FT E/O & 49.2FT S/O C/L INT	L 5700
LANCASTER (2012)	2,424.275 738.921	L&T IN S CB 5.6FT W/O BCR @ SW COR AVE K & 35TH ST E 63.6FT W/O & 46.9FT S/O C/L INT	L 5701
LANCASTER (2012)	2,423.718 738.751	LS TAG #5649 IN NE COR CONC FIRE HYD PAD @ NE COR AVE K & 35TH ST E 55.8FT N/O & 44FT E/O C/L INT	L 5702
LANCASTER (2012)	2,437.129 742.839	DPW BM TAG IN WLY CONC WINGWALL 1FT N/O S END 65.6FT S/O & 26.2FT E/O C/L INT AVE K & 50TH ST E	L 5704
LANCASTER (2012)	2,447.037 745.859	DPW BM TAG IN N CB 3.3FT E/O BCR @ NE COR 30TH ST E & AVE L 77.1FT E/O & 21.7FT N/O C/L INT	L 5706
LANCASTER (2012)	2,447.192 745.906	RCE TAG IN W CB @ BCR NW COR 30TH ST E & AVE L 55.8FT N/O & 49.2FT W/O C/L INT	L 5707
LANCASTER (2012)	2,434.458 742.025	DPW BM TAG IN E CB 4.9FT N/O BCR @ NE COR 30TH ST E & AVE K-8 82FT N/O & 39.4FT E/O C/L INT	L 5708
LANCASTER (2012)	2,415.832 736.348	L&T IN W CB @ BCR NW COR 30TH ST E & SAN MIGUEL DR 42.7FT N/O & 36.1FT W/O C/L INT	L 5710
LANCASTER (2012)	2,411.830 735.128	DPW BM TAG IN W CB 1FT S/O BCR @ SW COR 30TH ST E & AVE J-8 62.3FT S/O & 40.7FT W/O C/L INT	L 5711
LANCASTER (2012)	2,322.963 708.041	2IN IP W/CONC PLUG & DPW BM TAG 80.4FT W/O & 39.4FT S/O C/L INT 30TH ST E & AVE E-8 3FT E/O PP (NO #)	L 5715
LANCASTER (2012)	2,421.119 737.959	DPW BM TAG IN W END CONC HDWL @ NE COR 70TH ST E & AVE J 23FT N/O & 27.9FT E/O C/L INT	L 5723
LANCASTER (2012)	2,452.001 747.372	DPW BM TAG IN CONC FTG OF FENCE POST 45.9FT W/O & 28.2FT S/O C/L INT AVE K & 75TH ST E	L 5725

QUAD YEAR	ELEV FOOT/METER	DESCRIPTION	BM NUMBER
LANCASTER (2012)	2,325.940 708.949	L&BN IN CONC VENT PIPE PAD @ NE COR AVE D & 30TH ST W 39.4FT N/O & 72.2FT E/O C/L INT	L 5728
LANCASTER (2012)	2,328.227 709.646	2IN IP W/CONC PLUG & DPW BM TAG 2FT S/O PP (#1450498E) @ SE COR AVE D & 30TH ST W 36.1FT E/O & 44FT S/O C/L INT	L 5729
LANCASTER (2012)	2,403.017 732.442	CAL-TRANS MON IN CONC 164FT N/O & 32.8FT E/O C/L INT AVE D & 70TH ST W MKD (ACRE NO 1 1983)	L 5732
LANCASTER (2012)	2,421.411 738.048	DPW BM TAG IN CONC FTG OF NE GUARD POST FOR F HYD 52.5FT W/O & 49.2FT N/O C/L INT AVE D & 80TH ST W	L 5733
LANCASTER (2012)	2,429.938 740.647	2IN IP W/CONC PLUG & DPW BM TAG 105FT E/O & 31.2FT N/O C/L INT AVE D & 85TH ST W MKR 2FT S/O MON	L 5735
LANCASTER (2012)	2,430.181 740.721	2IN IP W/CONC PLUG & DPW BM TAG 8.5FT W & 28.5FT S/O C/L INT AVE D & 85TH ST W., 5'W/O PP (#1355129E)	L 5736
LANCASTER (2012)	2,442.027 744.332	2IN IP W/CONC PLUG & DPW BM TAG 78.7FT W & 22.9FT S/O C/L INT AVE D & 90TH ST W 5.6FT W/O PP #4335804E	L 5737
LANCASTER (2012)	2,464.388 751.148	CHIS + IN W SIDE OF GTE MH RIM 39.4FT E/O & 42.6FT S/O C/L AVE D & 100TH ST W 9.8FT W/O & 21.3FT S/O PP#7561Y	L 5739
LANCASTER (2012)	2,303.751 702.185	2IN IP W/CONC PLUG & DPW BM TAG 9.8FT E/O & 39.4FT S/O C/L INT AVE F & 10TH ST W 3.9FT E/O PP #1030642E	L 5740
LANCASTER (2012)	2,310.834 704.344	DPW BM TAG IN S EDGE OF V GUTTER 20FT W/O & 13.8FT S/O C/L INT AVE F & 20TH ST W	L 5741
LANCASTER (2012)	2,318.982 706.828	DPW BM TAG IN W SIDE 11.2FT S/O N END CONC SLAB METER BOX 144FT S/O & 39.4FT E/O C/L INT AVE F & 30TH ST W	L 5742
LANCASTER (2012)	2,327.325 709.371	DPW BM TAG IN CTR WLY MOST HDWL W DRWY @ #3663 AVE F 24.9FT N/O C/L & 0.2MI W/O 35TH ST W	L 5744
LANCASTER (2012)	2,346.336 715.165	2IN IP W/CONC PLUG & DPW BM TAG 2FT W/O PP #1048858E 29.5FT S/O & 59.1FT W/O C/L INT AVE F & PROP 55TH ST W (NW FENCE COR FOX FIELD)	L 5746
LANCASTER (2012)	2,354.853 717.761	CS MON @ SW COR AVE F & 60TH ST W 49.2FT S/O & 49.2FT W/O C/L INT MKD (PROP COR RE 11915) USE S EDGE MKR POST 2FT E/O MON	L 5747
LANCASTER (2012)	2,334.238 711.478	L&T IN N CB AVE I 38FT N/O C/L & 44FT E/O C/L PROD ELM AVE	L 5748
LANCASTER (2012)	2,329.743 710.108	DPW BM TAG IN N CB 6.6FT E/O BCR @ NE COR AVE I & 10TH ST W 85.3FT E/O & 57.7FT N/O C/L INT	L 5749
LANCASTER (2012)	2,329.033 709.891	DPW BM TAG IN N CB 36.1FT W/O BCR @ NW COR AVE I & 10TH ST W 98FT W/O & 38FT N/O C/L INT	L 5750
LANCASTER (2012)	2,323.526 708.213	CS TAG IN N CB 20.7FT E/O BCR @ NE COR AVE I & 17TH ST W 38.1FT N/O & 55.8FT E/O C/L INT	L 5752
LANCASTER (2012)	2,322.358 707.857	L&RCE 19289 NR MCR @ NW COR AVE I & 20TH ST W 65.6FT W/O & 46.9FT N/O C/L INT	L 5754

QUAD YEAR	ELEV FOOT/METER	DESCRIPTION	BM NUMBER
LANCASTER ( 2012 )	2,319.766 707.067	RCE #16029 TAG IN N CB @ BCR NE COR AVE I & 23RD ST W 55.8FT N/O & 14.4FT E/O C/L INT	L 5755
LANCASTER ( 2012 )	2,319.288 706.921	RCE TAG IN NE CB RET 6.6FT W/O BCR AVE I & 25TH ST W 59.1FT N/O & 52.5FT E/O C/L INT	L 5756
LANCASTER ( 2012 )	2,319.522 706.992	RCE TAG IN SE CB RET 21.3FT W/O BCR @ AVE I & VALLEY CENTRAL WAY 52.5FT E/O & 59.1FT S/O C/L INT	L 5757
LANCASTER ( 2012 )	2,319.458 706.973	LS TAG IN N CB AVE I 57.1FT N/O C/L ON C/L PROD 27TH ST W	L 5758
LANCASTER ( 2012 )	2,319.462 706.974	LS TAG IN N CB 1FT E/O BCR @ NE COR AVE I & 30TH ST W 64.6FT N/O & 100FT E/O C/L INT	L 5759
LANCASTER ( 2012 )	2,320.174 707.191	LS TAG IN N CB 1FT W/O BCR @ NW COR AVE I & 30TH ST W 52.5FT N/O & 100FT W/O C/L INT	L 5760
LANCASTER ( 2012 )	2,320.425 707.268	DPW BM TAG IN N CB 3.3FT E/O W END @ F HYD 42.7FT N/O C/L AVE I & 0.3MI W/O 30TH ST W	L 5761
LANCASTER ( 2012 )	2,339.496 713.081	DPW BM TAG IN E END HDWL @ NE COR AVE I & 50TH ST W 49.2FT E/O & 23FT N/O C/L INT	L 5763
LANCASTER ( 2012 )	2,354.091 717.529	DPW BM TAG IN S END HDWL @ NE COR AVE I & 60TH ST W 52.5FT N/O & 23FT E/O C/L INT	L 5764
LANCASTER ( 2012 )	2,484.764 757.358	DPW BM TAG IN NLY LEG EDISON TOWER #3-500KV 62.3FT S/O C/L AVE I & 269FT W/O C/L 105TH ST W	L 5767
LANCASTER ( 2012 )	2,389.264 728.250	2IN W/CONC PLUG & DPW BM TAG IM N/O PP (NO#) 102FT E & 26.2FT N/O C/L INT AVE G & 75TH ST W	L 5770
LANCASTER ( 2012 )	2,430.492 740.816	DPW BM TAG IN NE COR CONC ELEC BOX PAD @ SW COR AVE G & 90TH ST W 75.5FT W/O & 23FT S/O C/L INT	L 5772
LANCASTER ( 2012 )	2,648.066 807.133	2IN IP1FT UP S EDGE ON CONC SLAB 154FT E/O C/L 105TH ST W (PROP) & 56FT S/O C/L AVE K	L 5773
LANCASTER ( 2012 )	2,382.151 726.082	DPW BM TAG IN NE COR OF CONC ELEC BOX PAD @ SE COR AVE K & 70TH ST W 210FT S/O & 49.2FT E/O C/L INT	L 5775
LANCASTER ( 2012 )	2,385.048 726.965	DPW BM TAG IN SW COR OF CONC F HYD PAD @ NE COR AVE K & 50TH ST W 70.5FT E/O & 31.2FT N/O C/L INT	L 5776
LANCASTER ( 2012 )	2,385.746 727.178	DPW BM TAG IN S CB 3.3FT E/O BCR @ SE COR AVE K & BUENA VISTA WAY 139.4FT S/O & 47.9FT E/O C/L INT	L 5778
LANCASTER ( 2012 )	2,387.858 727.821	L&BRAD IN S CB 0.5FT E/O BCR @ SE COR AVE K & YEW ST 6FT E/O & 42.7FT S/O C/L INT	L 5779
LANCASTER ( 2012 )	2,390.986 728.775	DPW BM TAG IN S CB 3.3FT E/O BCR @ SE COR AVE K & 30TH ST W 80FT E/O & 43FT S/O C/L INT	L 5780
LANCASTER ( 2012 )	2,393.220 729.456	DPW BM TAG IN S CB @ BCR SW COR AVE K & 27TH ST W 52.5FT W/O & 42.7FT S/O C/L INT	L 5781
LANCASTER ( 2012 )	2,389.828 728.422	DPW BM TAG IN S CB 3.3FT E/O BCR @ SE COR AVE K & 25TH ST W 71FT E/O & 42.7FT S/O C/L INT	L 5782

QUAD YEAR	ELEV FOOT/METER	DESCRIPTION	BM NUMBER
LANCASTER (2012)	2,387.231 727.630	L&T IN N CB 1FT E/O BCR @ NE COR AVE K & 21ST ST W	L 5783
LANCASTER (2012)	2,389.309 728.264	DPW BM TAG IN E CB 3IN N/O BCR @ NE COR AVE K & 20TH ST W 75.5FT N/O & 36FT E/O C/L INT	L 5784
LANCASTER (2012)	2,390.061 728.493	2IN IP W/CONC PLUG & DPW BM TAG 3.3FT S/O SLY CF 118FT E/O & 46FT S/O C/L INT AVE K & 20TH ST W	L 5785
LANCASTER (2012)	2,393.182 729.444	L&T IN W CB 1FT S/O BCR @ NW COR AVE K & 17TH ST W 75.5FT N/O & 29.5FT W/O C/L INT	L 5786
LANCASTER (2012)	2,396.983 730.603	DPW BM TAG IN N CB 4.9FT W/O BCR @ NW COR AVE K & 15TH ST W 6.6FT W/O & 42.7FT N/O C/L INT	L 5787
LANCASTER (2012)	2,397.782 730.846	DPW BM TAG IN S CB 12.1FT E/O BCR @ SE COR AVE K & N BND 14 FRWY OFF-RAMP (15TH ST W) 65.6FT E/O & 42.7FT S/O C/L INT	L 5788
BASELINE (2010)	2,501.435 762.440	2IN IP 1IN UP 2FT N/O PP #2175728E @ NE COR AVE I & 110TH ST W 47.2FT E/O & 27.6FT N/O C/L INT	L 5789
LANCASTER (2012)	2,317.738 706.449	CS MON IN WELL 0.75FT DN @ C/L INT 30TH ST W & FUT AVE D-8 MKD (1/4 COR 19,20,T8N,R12W,RE 329)	L 5790
LANCASTER (2012)	2,329.910 710.159	CS MON IN WELL 1.3FT DN @ C/L INT 30TH ST W & AVE B-8 MKD (P R C RE 16486 1995)	L 5791
LANCASTER (2012)	2,327.849 709.531	CS MON 1FT DN ON C/L AVE B-8 & 52.5FT E/O C/L 30TH ST W 1M SWLY OF FENCE COR MKD (1/4 COR SEC 7,8,T5N,R12W,RE 16485 1995) MKR POST 3.3FT SLY	L 5792
LANCASTER (2012)	2,359.334 719.127	DPW BM TAG IN CTR OF HDWL @ SW COR 60TH ST W & AVE H 7.9FT S/O & 21.3FT W/O C/L INT	L 5793
LANCASTER (2012)	2,354.863 717.764	CO ENGR BR DISK IN CONC 0.2MI N/O FUT AVE F-8 & 49.2FT W/O C/L 60TH ST W MKD (RE 11915) 75' W/O PP#355388E & 9' S/O 4"X8" WOOD POST	L 5794
LANCASTER (2012)	2,382.762 726.268	DPW BM TAG IN SW COR CONC ELEC BOX PAD @ NE COR 60TH ST W & & AVE B 167.3FT E/O & 41.7FT N/O C/L INT	L 5795
LANCASTER (2012)	2,432.857 741.537	CO ENGR TAG IN W CB 6.5FT N/O BCR @ NW COR 90TH ST W & AVE H 73.8FT N/O & 29.5FT W/O C/L INT	L 5797
LANCASTER (2012)	2,427.102 739.783	DPW BM TAG IN ELY COR OF CONC SLAB @ NW COR 90TH ST W & AVE E-8, 80' N/O & 45' W/O C/L INT	L 5798
LANCASTER (2012)	2,436.804 742.740	2IN IP W/CONC PLUG & DPW BM TAG DN 8" @ NE COR 90TH ST W & AVE E 36.1FT E & 29.5FT N/O C/L INT, 7' N/O STOP SIGN	L 5799
LANCASTER (2012)	2,451.010 747.070	DPW BM TAG IN TOP OF CONC STANDPIPE @ NE COR 90TH ST W & AVE C 285FT N/O & 46FT E/O C/L INT	L 5800
LANCASTER (2012)	2,444.406 745.057	1.5IN IP W/DPW BM TAG 3.3FT S/O PP #843742E @ SE COR 90TH ST W & & AVE B-8 4.9FT S/O & 24.9FT E/O C/L INT	L 5801
LANCASTER (2012)	2,482.821 756.766	DPW BM TAG IN E CB N END DRWY TO HSE #42422 20TH ST W 42.7FT E/O C/L & 234.6FT N/O C/L AVE L-8	L 5803



QUAD YEAR	ELEV FOOT/METER	DESCRIPTION	BM NUMBER
LANCASTER (2012)	2,350.944 716.570	L&T IN E CB NR N P/L HSE #44158 30TH ST W 42.7FT E/O C/L & 0.25MI N/O AVE J-8	L 5805
LANCASTER (2012)	2,341.608 713.724	L&BRAD IN N CB 1FT E/O BCR @ NE COR 30TH ST W & AVE J 75.5FT E/O & 52.5FT N/O C/L INT	L 5806
LANCASTER (2012)	2,341.365 713.650	L&T IN E CB 1FT N/O BCR @ NE COR 35TH ST W & AVE J 79FT N/O & 30FT E/O C/L INT	L 5807
LANCASTER (2012)	2,345.989 715.060	L&T IN E CB 1FT S/O BCR @ SE COR 37TH ST W & AVE J 65.6FT S/O & 21.7FT E/O C/L INT	L 5809
LANCASTER (2012)	2,346.183 715.119	DPW BM TAG IN S CB 2FT W/O BCR @ SW COR 40TH ST W & AVE J 79FT W/O & 43FT S/O C/L INT	L 5811
LANCASTER (2012)	2,339.046 712.943	DPW BM TAG IN W END HDWL @ NE COR 40TH ST W & NEWGROVE ST 41.3FT E/O & 26.2FT N/O C/L INT	L 5812
LANCASTER (2012)	2,343.048 714.163	DPW BM TAG IN W CB 50TH ST W 7.9FT S/O END CB 49.2FT W/O C/L & 68.9FT S/O C/L ENT TO WASH 0.5MI S/O AVE I	L 5813
LANCASTER (2012)	2,353.410 717.322	DPW BM TAG IN N CB 1.5FT W/O BCR @ NW COR 50TH ST W & AVE J 83.7FT W/O & 42.7FT N/O C/L INT	L 5814
LANCASTER (2012)	2,439.375 743.524	DPW BM TAG IN CONC TRAFFIC LT BASE @ SE COR 50TH ST W & AVE L 37.7FT E/O & 32.8FT S/O C/L INT	L 5816
LANCASTER (2012)	2,463.780 750.962	DPW TAG IN S CB 1.5FT W/O BCR @ SW COR 50TH ST W & AVE L-8	L 5817
LANCASTER (2012)	2,463.499 750.877	L&T IN E CB NR BCR @ NE COR 50TH ST W & AVE L-8 67.9FT N/O & 42FT E/O C/L INT	L 5824
LANCASTER (2012)	2,423.244 738.607	DPW BM TAG IN E CB 3.3FT N/O BCR @ NE COR AVE K & SIERRA HWY 45.3FT E/O & 76.1FT N/O C/L INT	L 6325
LANCASTER (2012)	2,446.566 745.716	L&BN @ SE COR CONC CB AROUND A FIRE DEPT CONNECTION VALVE 57.4FT W/O C/L SIERRA HWY & 32.8FT S/O C/L N MOST DRWY #43233	L 6326
LANCASTER (2012)	2,503.200 762.978	DPW BM TAG IN W CB 25.3FT N/O BCR @ NW COR SIERRA HWY & AVE L-8 80.4FT N/O & 59.7FT W/O C/L INT	L 6327
LANCASTER (2012)	2,326.859 709.229	DPW BM TAG @ C/L HDWL OF WASH 31.2FT W/O C/L SIERRA HWY +/-0.2MI N/O AVE H-8	L 6328
LANCASTER (2012)	2,326.324 709.066	DPW BM TAG IN W CB UNDER C/L OVERPASS AVE H & 41FT W/O C/L SIERRA HWY	L 6329
LANCASTER (2012)	2,313.530 705.166	DPW BM TAG IN W HDWL @ S END W ENT SANITATION DIST 42FT N/O C/L AVE D & 120FT E/O C/L 20TH ST W	L 6330
LANCASTER (2012)	2,333.143 711.144	2IN IP W/CONC PLUG SPK & DPW W @ NW COR AVE B & 30TH ST W (TO TH N) 52.5FT N/O & 45.9FT W/O C/L INT MKR POST 2FT W/O IP	L 6332
LANCASTER (2012)	2,334.601 711.589	L&T S SIDE CONC UTILITY PAD 42FT N/O AVE B & 60.4FT W/O C/L PROD 30TH ST W (TO THE S)	L 6333

QUAD YEAR	ELEV FOOT/METER	DESCRIPTION	BM NUMBER
LANCASTER (2012)	2,317.251 706.300	2IN IP W/CONC PLUG & BRAD DN 1FT 52.5 W/O C/L 30TH ST W & 52.5FT S/O C/L PROD AVE E (ELY)	L 6334
LANCASTER (2012)	2,319.785 707.073	L & DPW BM TAG IN W CB 2FT S/O BCR @ NW COR 30TH ST W & AVE G 44.6FT W/O & 74.1FT N/O C/L INT	L 6335
LANCASTER (2012)	2,319.583 707.011	L & DPW BM TAG IN W CB 1FT S/O BCR @ SW COR 30TH ST W & AVE G 41FT W/O & 80.4FT S/O C/L INT	L 6336
LANCASTER (2012)	2,341.288 713.627	L & DPW BM TAG IN S CB @ W END OF C.B. 11.5FT E/O BCR @ SE COR AVE J & 35TH ST W 75FT E & 43.3FT S/O C/L INT	L 6337
LANCASTER (2012)	2,414.376 735.904	L & T E CB @ BCR @ SE COR 30TH ST W & AVE K-8 67FT S & 41FT E/O C/L INT	L 6339
LANCASTER (2012)	2,454.024 747.989	L & BM TAG E CB @ BCR @ SE COR AVE L & 25TH ST W 77.7FT S & 31.5FT E/O C/L INT	L 6340
LANCASTER (2012)	2,485.504 757.584	L & BM TAG E CB 1FT N/O END CB @ NE COR 20TH ST W & AVE L-8 65FT N/O & 41.3FT E/O C/L INT	L 6341
LANCASTER (2012)	2,521.393 768.523	L & BM TAG W CB 1FT N/O END CB @ WINERY #42041 42FT W/O C/L 20TH ST W & 359FT N/O C/L AVE M	L 6342
LANCASTER (2012)	2,382.375 726.150	L & BM TAG S CB 1FT W/O BCR @ SE COR AVE K & BLOSSOM DR 17FT S/O & 22FT E/O C/L INT	L 6344
LANCASTER (2012)	2,391.094 728.808	L & BM TAG S CB OF EAST ISLAND OF FUTURE C/L DIVIDER 1FT E/O BCR @ INT OF AVE K & 60TH ST W	L 6345
LANCASTER (2012)	2,352.886 717.162	DPW BM TAG IN E CB 1FT S/O BCR @ SE COR AVE J & 50TH ST W 59FT E & 88.6FT S/O C/L INT	L 6346
LANCASTER (2012)	2,413.271 735.567	DPW BM TAG IN E CB 3FT S/O BCR ( @ S END C.B.) @ NE COR 50TH ST W & AVE K-8 75.5FT N & 49.2FT E/O C/L INT	L 6348
LANCASTER (2012)	2,438.804 743.350	DPW BM TAG IN NE COR CONC FIRE HYD. PAD @ SW COR 50TH ST W & AVE L 83.7FT W & 34.4FT S/O C/L INT	L 6349
BASELINE (2010)	2,444.256 745.011	L & DPW BM TAG IN CONC FOOTING FENCE POST 38' N & 50' E OF C/L INT AVE J & 90TH ST E	L 6350
LANCASTER (2012)	2,426.655 739.647	LACO MON @ C/L INT 50TH ST E & AVE J-8	L 6360
LANCASTER (2012)	2,471.245 753.238	L & DPW TAG INNW COR CONC FTG OF W'LY GATE POST, 20FT E/O & 82FT S/O C/L INT AVE K & 85TH ST E	L 6361
LANCASTER (2012)	2,458.700 749.414	L & DPW BM TAG NW COR 4FTX4FT CONC ELECT METER PAD @ HSE#43550-1/4 15' E & 100' S/O C/L INT AVE K & 80TH ST E	L 6362
LANCASTER (2012)	2,352.531 717.054	BT SPK & W DN 3IN @ C/L INT 30TH ST E & AVE G-8	L 6367
LANCASTER (2012)	2,399.483 731.365	LA CO MON DN 1FT @ C/L INT 30TH ST E & AVE J	L 6368
BASELINE (2010)	2,473.766 754.006	DPW BM TAG SW COR CONC BASE TRAFFIC SIG @ NE COR AVE M & 30TH ST E 65FT N & 49.2FT E/O C/L INT	L 6401

QUAD YEAR	ELEV FOOT/METER	DESCRIPTION	BM NUMBER
LANCASTER (2012)	2,461.236 750.187	2IN IP FL W/SPK & DPW W 25.6FT N/O DIRT RD TO E (FUT. AVE L-8) & 41FT E/O C/L 30TH ST E 44.3FT N/O PP#4040461E) 2' N/O MKR POST	L 6402
LANCASTER (2012)	2,429.036 740.372	L&T N CB 2 IN W/O BCR @ NW COR AVE K & 6TH ST E 45.9FT W & 44.3FT N/O C/L INT	L 6403
LANCASTER (2012)	2,376.819 724.457	L & BM TAG S CB 1FT W/O BCR @ SW COR AVE I & 25TH ST E 49.9FT W/O & 49.2FT E/O C/L INT	L 6404
LANCASTER (2012)	2,376.801 724.451	L&T S CB 8.2FT E/O END CB @ SE COR AVE I & 25TH ST E 42.7FT S/O & 54.1FT E/O C/L INT	L 6405
LANCASTER (2012)	2,322.582 707.925	L & DPW TAG IN ELY END HDWALL @ NE COR AVE G & DIVISION ST 29.5FT N & 29.5FT E/O C/L INT	L 6407
LANCASTER (2012)	1.000 0.305	CS MON DN 1FT @ C/L INT 90TH ST W & AVE I	L 6408
LANCASTER (2012)	2,435.681 742.398	L & DPW BM TAG IN W WING WALL 1FT S/O N END @ NE COR AVE K & 50TH ST E 26.2FT E & 37.7FT N/O C/L INT	L 6409
LANCASTER (2012)	2,443.718 744.847	L & DPW BM TAG S EDGE CONC APRON 55.8FT E/O SE COR BRIDGE OVER LITTLE ROCK WASH E/O 60TH ST E 20FT S/O C/L AVE K	L 6410
LANCASTER (2012)	2,447.806 746.094	L & DPW BM TAG IN SE COR UTILITY BOX SLAB @ SW COR AVE K & 70TH ST E 165.7FT S & 55.8FT W/O C/L INT	L 6411
LANCASTER (2012)	2,358.903 718.996	2IN IP UP 2IN (WITH CHIS NOTCH ON HIGH SIDE) 1FT N/O TEL CABLE BOX @ SW COR AVE E-8 & 60TH ST W 32.2FT W/O C/L & 4.9FT S/O C/L INT	L 6414
LANCASTER (2012)	2,361.215 719.701	2IN IP W/CONC PLUG DPW W & SPK FL IN CS WELL 2FT SELY OF MRK POST @ SW COR AVE E & 60TH ST W 114.8FT S/O & 29.5FT W/O C/L INT	L 6415
LANCASTER (2012)	2,379.274 725.205	1-1/2IN IP W/CONC COLLAR & PLUG W/DPW W & SPK FL 1.5FT E/O HIGH VOLTAGE PP (NO#) @ SW COR 60TH ST W & AVE D-8 50.8FT W/O & 13.1FT S/O C/L INT	L 6416
LANCASTER (2012)	2,384.710 726.862	2IN IP W/CONC PLUG SPK & DPW W FL 3.9FT E/O PP#1355088E @ NE COR 60TH ST W & AVE C 19.7FT N/O & 39.4FT E/O C/L INT	L 6417
LANCASTER (2012)	2,383.094 726.369	L & DPW BM TAG IN CONC COLLAR DRAIN @ SE COR 60TH ST W & AVE B 26.2FT E/O & 32.8FT S/O C/L INT	L 6418
LANCASTER (2012)	2,384.193 726.704	L & DPW TAG IN CONC COLLAR DRAIN @ NE COR AVE A-8 & 60TH ST W 9.8FT N/O & 42.7FT E/O C/L INT	L 6419
LANCASTER (2012)	2,453.368 747.789	LA CO BM TAG @ NW COR CONC COLLAR 9.8FT E/O CONC STAND PIPE 249FT S/O AVE D @ APPROX C/L 95TH ST W., 200' S/O PP#381075E	L 6420
LANCASTER (2012)	2,392.276 729.168	1IN IP FLUSH W/CHIS MRK @ HIGH PT @ SE COR AVE D & 65TH ST W 54.1FT S/O & 44.3FT E/O C/L INT	L 6421
LANCASTER (2012)	2,434.528 742.046	L & LA CO BM TAG IN NW COR CONC MAILBOX PAD @ SE COR AVE A & 90TH ST W 27.2FT S/O & 61.4FT E/O C/L INT	L 6423

QUAD YEAR	ELEV FOOT/METER	DESCRIPTION	BM NUMBER
LANCASTER (2012)	2,428.200 740.118	L & LA CO BM TAG @ SW COR CONC PAD @ NE COR 90TH ST W & AVE G 130.2FT E/O & 183.7FT N/O C/L INT	L 6424
LANCASTER (2012)	2,419.448 737.450	EAST MOST BOLT W/CHIS "X" @ BASE OF FIRE HYD. @ NW COR 90TH ST W & AVE F-8 38.1FT N/O & 38.1FT W/O C/L INT	L 6425
LANCASTER (2012)	2,422.746 738.455	TOP OF FIRE HYD @ NE COR 90TH ST W & AVE F 65.6FT E/O & 26.2FT N/O C/L INT	L 6427
LANCASTER (2012)	2,437.717 743.018	TOP NUT OF FIRE HYD @ SW COR 90TH ST W & AVE E 49.2FT W/O & 29.5FT S/O C/L INT	L 6429
LANCASTER (2012)	2,366.315 721.255	LACO BM TAG IN CONC COLLAR @ NW COR AVE G & 65TH ST W 33' N/O & 30' W/O C/L INT, 4' N/O MKR POST	L 6430
LANCASTER (2012)	2,375.941 724.189	LACO BM TAG IN SE COR CONC WALK @ NW COR AVE G & 70TH ST W 32.8FT N/O & 48.9FT W/O C/L INT	L 6432
LANCASTER (2012)	2,375.671 724.107	LACO BM TAG IN WALK TO DR OF WESTSIDE UNION SCHOOL DIST @ NW COR 70TH ST W & AVE G 85.3FT N/O & 26.2FT W/O C/L INT	L 6433
LANCASTER (2012)	2,390.589 728.654	2IN IP UP 1FT W/CONC PLUG & NAIL CHIS MRK @ HIGH PT SELY EDGE PIPE @ OR NR C/L PROD 75TH ST W & 41.3FT N/O C/L AVE G	L 6434
LANCASTER (2012)	1.000 0.305	LACO BM TAG IN SW COR CONC BASE UTIL BOX @ NW COR 85TH ST W & AVE G 150FT W/O & 51.2FT N/O C/L INT	L 6436
LANCASTER (2012)	2,456.256 748.669	2IN IP UP 0.5FT @ NE COR 100TH ST W & AVE G 31.5FT E/O & 42FT N/O C/L INT, 1.5' S/O 6"X8" WOOD POST	L 6437
LANCASTER (2012)	2,422.855 738.488	2IN IP FL @ SW COR 90TH ST W & AVE H-8 37FT W/O & 3FT S/O C/L INT 1.5FT W/O PP#1117508E	L 6438
LANCASTER (2012)	2,462.117 750.456	C-NAIL IN CONC STAND PIPE @ SW COR AVE I & 100TH ST W 65FT S/O & 35FT W/O C/L INT	L 6439
LANCASTER (2012)	2,483.688 757.030	L & BM TAG IN SLY LEG OF EDISION TOWER NW COR AVE I & 105TH ST W 50FT N/O & 110FT W/O C/L INT	L 6440
BASELINE (2010)	2,481.638 756.406	DPW BM TAG, SW COR AVE M & 50TH ST E., TOP CONC FNC POST FTG @ B.C. OF CLF	L 7251
BASELINE (2010)	2,475.777 754.619	CS MON, CL INT 90THST E & AVE K	L 7254
BASELINE (2010)	2,647.073 806.830	LA CO ENG'R MON, CL INT AVE L & 90TH ST W., MRK'D SEC COR 29, 30, 31, 32 R13W, T7N)	L 7265
BASELINE (2010)	2,643.613 805.776	LA CO BM DISC MRK'D 7266, 80' E/O & 30' S/O CL INT AVE L & 90TH ST W. , N'LY FTG METAL PP (DN 16")	L 7266
BASELINE (2010)	2,534.980 772.664	DPW TAG, 9' E/O BCR, NW COR AVE M & 4TH ST W.	L 7267
BASELINE (2010)	2,520.500 768.251	DPW TAG, NW COR AVE M & 30TH ST W., SE COR CONC SLAB ELECT PANEL	L 7268
BASELINE (2010)	2,525.791 769.863	LS TAG 5000, SW COR AVE M & QUARTZ HILL RD, S/CURB @ W'LY END DRWY	L 7269

QUAD YEAR	ELEV FOOT/METER	DESCRIPTION	BM NUMBER
BASELINE ( 2010 )	2,504.565 763.394	LA CO BM DISC MRK'D 7270, NW COR AVE M & 40TH ST W., 2' E/O CTR CONC PAD FIRE HYD	L 7270
BASELINE ( 2010 )	2,846.148 867.509	USGS MON MRK'D W-1044-1960, 150' E/O CL INT AVE L & 105TH ST W.	L 7271
BASELINE ( 2010 )	2,826.721 861.587	CS MON (25,36,1/4 COR. T7N SEC) CL INT AVE L & 105TH ST W.	L 7272
BASELINE ( 2010 )	2,762.591 842.040	2" IP W/ LA CO ENG'R TAG, SE COR CL INT AVE L-8 & 90TH ST W.	L 7273
BASELINE ( 2010 )	2,875.000 876.303	2" IP W/ LA CO ENG'R TAG, SW COR AVE M & 85TH ST W. UP 6"	L 7275
BASELINE ( 2010 )	2,721.736 829.588	CS MON CL INT AVE M & 80TH ST W. FLUSH	L 7276
BASELINE ( 2010 )	2,495.806 760.724	DPW TAG W'LY CURB , 12' N/O BCR, SW COR AVE M & 50TH ST W.	L 7278
BASELINE ( 2010 )	2,690.118 819.950	CAL DIV HWYS MON, 65' S/O & 0.25MI W/O CL INT 90TH ST W. & AVE L (MRK'D SUR J-11, RM2, 1972), MP 2' S/O MON	L 7279
BASELINE ( 2010 )	2,477.810 755.239	CE MON , 70' S & 30' W/O CL INT 90TH ST E. & AVE K, MRK'D RE5869 BM 107-22-1961, 2' W/O GUY POLE	L 7351
BASELINE ( 2010 )	2,504.286 763.309	2" IP W/FC DISK MRK'D 7352, UP 18", SW COR 90TH ST E & AVE L, 62' W & 36' S/O CL INT	L 7352
BASELINE ( 2010 )	2,493.855 760.129	L&T SW COR CONC SLAB, 65' N & 98' E/O CL INT 90TH ST E & AVE K-8	L 7353
BASELINE ( 2010 )	2,475.777 754.619	CS MON, CL INT 90THST E & AVE K	L 7354
BASELINE ( 2010 )	2,476.710 754.903	L&BM TAG, NW COR GAS POST FTG, 27' N & 47' E/O 90TH E & AVE K	L 7355
BASELINE ( 2010 )	2,461.370 750.228	2" IP W/SPK & DPW TAG, 60' S & 90' E/O 90TH ST E & AVE J-8, 5' W/O SW COR CONC WELL PAD	L 7356
BASELINE ( 2010 )	2,460.764 750.043	FC DISK MRK'D 7357, 30' S & 88' E/O CL INT 90TH ST E & AVE J-8, NW COR 15' HIGH WOOD WALL	L 7357
BASELINE ( 2010 )	2,403.147 732.481	BM TAG, 120' N & 140' E/O CL INT 90TH ST E & AVE H-8, E'LY SIDE OF CONC FTG 2" METAL POST 5' HIGH	L 7358
LANCASTER ( 2012 )	2,338.601 712.808	LA CO BM DISK STMP'D 7418, SW COR 4X4 CONC PAD, 82' N/O AVE E & 0.4MI W/O 90TH ST E.	L 7418
LANCASTER ( 2012 )	2,333.650 711.299	LA CO BM DISK STMP'D 7419 I 8X8 CONC PAD, 2' N/O S'LY ENTRY, 91' N/O & 68' E/O CL INT AVE E & 75TH ST E.	L 7419
LANCASTER ( 2012 )	2,335.959 712.002	CHS (TRI) TOP 1" BOLT SE COR CONC PILLER, UP 6", 142' N. & 95' W/O 75THST E. & AVE E	L 7420

QUAD YEAR	ELEV FOOT/METER	DESCRIPTION	BM NUMBER
LANCASTER (2012)	2,331.380 710.607	SPK & DPW W. IN 2" SQUARE METAL POST UP 2", 30' S/O & 20' E/O 70TH ST E. & AVE E	L 7421
LANCASTER (2012)	2,328.475 709.721	LA CO BM DISK STMP'D 7422, SW COR 4X4 CONC PAD, 102' N. & 85' W/O CL INT 65TH ST E & AVE E	L 7422
LANCASTER (2012)	2,325.245 708.737	2" IP & LA CO BM DISK STMP'D 7423, UP 2", 100' N. & 30' E/O 60TH ST E. & AVE E, 2' E/O TELE POLE (K3526Y)	L 7423
LANCASTER (2012)	2,323.733 708.276	CS MON IN WELL, DN 15", CL INT AVE E & 55TH ST E.	L 7424
LANCASTER (2012)	2,323.033 708.063	SPK & DPW W. IN 1.5" IP, UP 5", 60' N. & 0.25MI E/O 50TH ST E & AVE E, 6' N/O PP#457419E	L 7425
LANCASTER (2012)	2,322.243 707.822	1/2" REBAR IN NW COR 2'X3' CONC BLOCK, UP 20", 100' N. & 0.1MI W/O 50TH ST E. & AVE E	L 7426
LANCASTER (2012)	2,319.801 707.077	2" IP W/CE TAG, UP 4", 71' SE OF 45TH ST E. & AVE E	L 7427
LANCASTER (2012)	2,315.899 705.888	1"IP W/DPW TAG, DN 9", 58' SW OF CL INT 35TH ST E. & AVE E	L 7428
LANCASTER (2012)	2,313.709 705.221	2"IP W/CE TAG, DN 4", 71' NW OF 30TH ST E. & AVE E	L 7429
LANCASTER (2012)	1.000 0.305	CHS X TOP OF FH, 105' S. & 23' W/O CL INT AVE I & 45TH ST E.	L 7430
LANCASTER (2012)	1.000 0.305	2" IP W/LA CO BM DISK STMP'D 7431, FLUSH, 54' N. & 30' E/O CL INT AVE I & 40TH ST E., 3' E/O PP#4191315E	L 7431
LANCASTER (2012)	2,351.285 716.674	RD MON IN WELL, DN 36", 30' S. & 45' W/O CL INT AVE G & 55TH ST E.	L 7432
LANCASTER (2012)	1.000 0.305	LA CO ENGR MON, FLUSH, 33' S. & 25' W/O CL INT AVE I & 75TH ST E. (BM107-29,1961)	L 7433
LANCASTER (2012)	2,352.596 717.073	2" IP W/ NAIL UP 2", 45' N. & 46' W/O 30TH E. & AVE G-8	L 7434
LANCASTER (2012)	2,351.108 716.620	LA CO BM DISK STMP'D 7435, NE COR CONC PAD, 45' N. & 235' W/O CL INT 50TH ST E. & AVE G	L 7435
LANCASTER (2012)	2,350.582 716.460	2" IP DPW TAG, DN 10", 50' NE OF CL INT 45TH ST E. & AVE G, 4' NE OF 4" CONC PIPE	L 7436
LANCASTER (2012)	2,347.848 715.626	DPW TAG NW COR OF CONC HEADWALL, 43' SE OF 35TH ST E. & AVE G	L 7437
LANCASTER (2012)	2,341.779 713.776	1' IP W/DPW TAG DN 9", 73' SW/O 25TH ST E. & AVE G	L 7438
LANCASTER (2012)	2,337.135 712.361	1' IP W/DPW TAG DN 9", 73' NE OF 20TH ST E. & AVE G, 2' N/O MKR POST	L 7439
LANCASTER (2012)	2,337.564 712.492	1' IP W/DPW TAG DN 6", 53' S. & 49' W/O CL INT 20TH ST E. & AVE G	L 7440

QUAD YEAR	ELEV FOOT/METER	DESCRIPTION	BM NUMBER
LANCASTER ( 2012 )	2,450.059 746.780	L&BR, N. CURB 15' W/O BCR, NW COR 21ST ST W. & AVE L	L 7441
LANCASTER ( 2012 )	2,451.800 747.311	L&BR, N. CURB, 27' E/O END CB, 50' W/O CL PROD OF ANNA MADRE ST & AVE L, 17' W/O ST LIGHT #4191625E	L 7442
LANCASTER ( 2012 )	2,440.797 743.957	L&BR, E. CURB, 292' N. & 40' E/O CL INT 30TH ST W. & AVE L, 50' N/O ST LIGHT #2293948	L 7443
LANCASTER ( 2012 )	2,412.848 735.438	L&BR @ BCR, W. CURB, NW COR 30TH ST W. & AVE K-8	L 7444
LANCASTER ( 2012 )	2,342.965 714.138	2"IP W/CE TAG DN 11", 71' NW/O 50TH ST E. & AVE F-8, 2' W/O MKR POST	L 7445
LANCASTER ( 2012 )	2,336.709 712.231	2"IP & LA CO DPW BM DISK STMP'D 7446 DN 2", 68' SW/O 50TH ST E, & AVE F, 2' W/O MKR POST	L 7446
LANCASTER ( 2012 )	2,359.362 719.136	2' IP & LA CO BR DISK STMP'D 7447 UP 6", 35' N. & 65' W/O 50TH ST E. & AVE G-8, 4' W/O PP#865110E	L 7447
LANCASTER ( 2012 )	2,331.835 710.745	2" BR DISK, STMP'D R12W R13W, T1N, 1/4 SEC, RE7078 30" DN, CL INT 40TH ST W. & LANCASTER BLVD	L 7448
LANCASTER ( 2012 )	2,427.551 739.920	L&DPW TAG 3' N/O BCR @ NE COR 30TH ST E. & AVE K-4	L 7449
LANCASTER ( 2012 )	2,302.741 701.878	1"IP W/ DPW TAG DN 18", 40' S. & 70' E/O CL INT 10TH ST E. & AVE E	L 7450
LANCASTER ( 2012 )	2,302.901 701.926	1"IP W/ DPW TAG DN 6", 54' N. & 40' E/O CL INT 10THST E & AVE E	L 7451
LANCASTER ( 2012 )	2,298.665 700.635	2"IP W/CE TAG DN 6", 75' SW/O CL INT 5TH ST E. & AVE E	L 7452
LANCASTER ( 2012 )	2,297.695 700.340	L&T CTR CONC DRAIN, 20' N. & 130' E/O DIVISION ST & AVE E	L 7453
LANCASTER ( 2012 )	2,298.491 700.582	LA CO DPW BM DISK STMP'D 7454, 20' S. & 105' W/O DIVISION ST & AVE E, NE COR MM 0.02 CONC DRAIN	L 7454
LANCASTER ( 2012 )	2,297.140 700.170	1"IP W/DPW TAG DN 6", 76' SW/O 5TH ST W. & AVE E	L 7455
LANCASTER ( 2012 )	2,297.311 700.223	1"IP W/ DPW TAG DN 6", 70' NW/O 5TH ST W. & AVE E	L 7456
LANCASTER ( 2012 )	2,303.498 702.108	DPW TAG, 40' N. & 30' E/O SIERRA HWY & AVE E, 10' N/O S'LY END OF E'LY CONC WALL OF BRIDGE	L 7457
LANCASTER ( 2012 )	2,444.979 745.232	L&DPW TAG SW COR ELECT PANEL CON PAD, 60' N. & 75' W/O CL INT AVE K & 70TH ST E.	L 7458
LANCASTER ( 2012 )	2,434.658 742.086	2"IP W/CE TAG DN 6", 70' SE/O CL INT AVE J-8 & 70TH ST E.	L 7459

QUAD YEAR	ELEV FOOT/METER	DESCRIPTION	BM NUMBER
LANCASTER ( 2012 )	2,384.491 726.795	LS7850 TAG, SW COR CONC PAD, 54' NW/O AVE K & 50TH ST W	L 7460
LANCASTER ( 2012 )	2,380.926 725.708	LS 4494 TAG, 15' W/O BCR NW COR AVE K & 45TH ST W.	L 7461
LANCASTER ( 2012 )	2,328.328 709.677	LA COUNTY BM DISK STMP'D 7420, UP 2", 42' N. & 185' E/O SL INT AVE I & 40TH ST W, 20' E/O PP#865008E	L 7462
LANCASTER ( 2012 )	2,341.378 713.654	SM SPK IN S/CURB, 2' E/O BCR @ SE COR AVE I & 30THST W.	L 7463
LANCASTER ( 2012 )	2,306.653 703.070	2"IP & CE TAG, UP 4", 71' SE/O CL INT 15TH ST W. & AVE F	L 7464
LANCASTER ( 2012 )	2,303.121 701.993	DPW TAG IN N.GATE POST FTG TO ENT TO SANITATION YARD #14, 60' W/O SIERRA HWY, S/O AVE C, 65' S/O PP#2123764E	L 7465
LANCASTER ( 2012 )	2,303.284 702.043	2" IP W/LA CO BM DISK, STMP'D 7466, 75' N/O INT TO SANITATION YARD #14, 59' W/O SIERRA HWY, 2' NW'LY OF PP#2123764E	L 7466
LANCASTER ( 2012 )	2,306.036 702.882	L&RD BM TAG IN N.END OF W'LY HEADWALL @ CULVERT MKR 7.47, 25' W/O SIERRA HWY & 0.5MI N/O AVE C	L 7467
LANCASTER ( 2012 )	2,480.705 756.121	L&BR MCR OF CURB, NW COR AVE L-12 & 50TH ST W.	L 7468
LANCASTER ( 2012 )	2,404.573 732.916	L&RLS TAG 6307, E. CURB @BCR, NE COR AVE K-6 & 50TH ST W.	L 7469
LANCASTER ( 2012 )	2,366.378 721.274	L&LS TAG 5955, W. CURB @BCR, NW COR AVE J-8 & 50TH ST W.	L 7470
LANCASTER ( 2012 )	2,366.659 721.360	LA COUNTY BM DISK, STMP'D 7471, NE COR OF CONC FTG, 75' S. & 21' W/O CL INT AVE I & 70TH ST W.	L 7471
LANCASTER ( 2012 )	2,403.918 732.716	CHS TRIANGLE IN TOP OF ANCHOR BOLT @ SE COR 4'X5' CONC PAD, 108' S. & 42' E/O CLINT 85TH ST W. & AVE I	L 7472
LANCASTER ( 2012 )	2,442.136 744.365	CE TAG TOP NW COR 7'X7' 2' HIGH BLK WALL, 60' S. & 27' E/O CL INT AVE I & 95TH ST W	L 7473
LANCASTER ( 2012 )	2,459.581 749.683	2"IP W/PLS TAG 5642, FLUSH @AC FLOWLINE, 30' S/O AVE I & 100TH ST W.	L 7474
LANCASTER ( 2012 )	2,536.236 773.047	2"IP W/CE TAG, UP 1", 50' SW OF 100TH ST W. & AVE J-8, 2' W/O MKR POST	L 7475
LANCASTER ( 2012 )	2,383.661 726.542	2"IP W/CE TAG FLUSH, 50' S. & 50' E/O CL INT AVE A-8 & 60TH ST W.	L 7476
LANCASTER ( 2012 )	2,457.406 749.020	CS MON DN 14", CL INT 100TH ST W. & AVE I-8, 5' W/O MKR POST	L 7477
LANCASTER ( 2012 )	2,328.337 709.679	LA COUNTY BM DISK STMP'D 7478 IN CONC, FLUSH, 45' N. & 35' W/O CL INT 30TH ST W. & AVE C, 5' W/O 24" MILE MKR 2.00	L 7478
LANCASTER ( 2012 )	2,369.919 722.353	4" CAL-TRANS DISK IN 12"X12" CONC PAD @NW COR AVE D & 50TH ST W., 102' N. & 125' W/O CL INT (MRK'D AVENUE NO.3,1983)	L 7479



QUAD YEAR	ELEV FOOT/METER	DESCRIPTION	BM NUMBER
LANCASTER (2012)	2,390.200 728.535	L&BR, MCR, SE COR AVE K & 20TH ST W	L 7480
LANCASTER (2012)	2,343.430 714.280	1"IP W/DPW TAG, DN 10", 75' SE/O CL INT AVE D & 40TH ST W	L 7481
LANCASTER (2012)	2,335.482 711.857	4" CAL-TRANS BR DISK, 1' N/O S'LY CURB, 30' S/O AVE D & 200' E/O SE'LY COR CONC WALL OVER 14 FWY, MRK'D OVERPASS 1983	L 7482
LANCASTER (2012)	2,339.971 713.225	2"IP W/CE TAG, UP 9", 41' N. & 60' E/O CL INT 35TH ST W. & AVE A, 7' NW/O PP#4191749E	L 7483
LANCASTER (2012)	2,353.633 717.390	1"IP W/DPW TAG, DN 8", 60' SE/O CL INT 45TH ST W & AVE A, 2' N/O MKR POST	L 7484
LANCASTER (2012)	2,373.332 723.394	1"IP W/ DPW TAG, DN 4", 50' N & 80' E/O CL INT 55TH ST W. & AVE A, 2' N/O MKR POST	L 7485
LANCASTER (2012)	2,399.174 731.270	1"IP W/DPW TAG, DN 3", 40' E. & 48' N/O CL INT 70TH ST W & AVE A, 2' S/O MOC OF BLK WALL	L 7486
LANCASTER (2012)	2,401.068 731.848	LA COUNTY BM DISK, STMP'D 7487, N.END OF HEADWALL, 85' S. & 20' W/O CL INT 70TH ST W. & AVE A	L 7487
LANCASTER (2012)	2,445.416 745.365	1"IP W/ DPW TAG, DN 5", 42' NE/O CL INT 95TH ST W. & AVE A, 2' N/O MKR POST	L 7488
LANCASTER (2012)	2,478.888 755.567	LA COUNTY BM DISK, STMP'D 7489, NE COR FTG OF POWER LINE, 0.1MI W. & 120' S/O CL INT 105TH ST W. & AVE A	L 7489
LANCASTER (2012)	2,323.251 708.129	2"IP W/CE TAG, UP 6", 71' SE/O CLINT 25TH ST W. & AVE A	L 7490
BASELINE (2010)	2,847.247 867.844	2" IP W/LA COUNTY BM DISK, STMP'D 7491, UP 3", 50' W. & 0.7MI S/O AVE K & 110TH ST W., 25' W/O PP#4759491E, 2' N/O MKR POST	L 7491
BASELINE (2010)	2,504.159 763.270	1-1/2"IP W/BRAD, DN 8", 74' SW/O CL INT 110TH ST W. & AVE H-8, 2' W/O MKR POST	L 7492
BASELINE (2010)	2,516.544 767.045	1-1/2"IP W/BRAD, DN 9", 74' SW/O CL INT 110TH ST W. & AVE F, 2' W/O MKR POST	L 7493
LANCASTER (2012)	2,434.544 742.051	2"IP W/LA COUNTY BM DISK STMP'D 7494, 0.1MI S. & 25' E/O CL INT 90TH ST W. & AVE A, 2' SE/O PP#843714E	L 7494
LANCASTER (2012)	2,420.551 737.786	CHS X ON S'LY RIM ON VERIZON MANHOLE, 115' S. & 16' W/O CLINT AVE F & 90TH ST W.	L 7495
LANCASTER (2012)	2,420.355 737.726	CHS X ON W'LY EDGE OF GTE MANHOLE RIM, 65' S. & 17' W/O CL INT 90TH ST W. & AVE F-8	L 7496
LANCASTER (2012)	2,442.117 744.360	4" CAL-TRANS DISK (STMP'D ROG NO.1, 1983) @NE COR AVE D & 90TH ST W., 240' N. & 33' E/O CL INT, 15' E/O PP#843772E, 1' S/O MKR POST	L 7497
LANCASTER (2012)	2,443.419 744.756	4" BR DISK IN CONC, FLUSH, 45' NE/O CL INT AVE B & 90TH ST W. (USGS BENCHMARK 2441' ABOVE SEA LEVEL, 1TWN 1963)	L 7498

QUAD YEAR	ELEV FOOT/METER	DESCRIPTION	BM NUMBER
LANCASTER ( 2012 )	2,401.478 731.973	CS MON IN WELL, DN 20", CL INT AVE G & 80TH ST W.	L 7499
LANCASTER ( 2012 )	2,422.976 738.525	4" BR CAP MON IN WELL, STMP'D LS6583 (DATE 2007) DN 10", CL INT AVE I & 90TH ST W.	L 7500
LANCASTER ( 2012 )	2,462.053 750.436	2"IP W/CE TAG, DN 10", 71' NE/O CL INT 105TH ST W. & AVE G	L 7501