

COUNTY OF LOS ANGELES

ROAD DEPARTMENT



NORWALK QUAD

BENCH MARKS

1960

PREFACE

The Road Department level net is composed of more than 1,000 miles of levels supporting in excess of 10,000 bench marks. In 1964-65, a major readjustment of the net was undertaken. To emphasize the complete break with previous elevations, the SY, SG & SL series bench marks have been re-labeled BY, BG & BL, respectively.

To facilitate the adjustment, indexing, and distribution of adjusted values of the net, the County territory was divided into 31 quads or areas. For identification purposes each quad was given a name, viz., "Rosemead," "La Mirada," "Santa Fe," etc. When bench marks and elevations in the Road Department net are used, the name of the quad in which the bench mark is located and the date of the adjustment of the elevation must be included in the bench mark description, e.g.,

BG 1887 --L+BN IN CONC HDWL OF DRAIN PIPE UNDER DR 218 FT
NE +18 FT SE C/L INT SAN JOSE HILLS RD +CAMERON AVE MKD (BM)
(COVINA --1965) ELEV. 696.238

It is expected that this general adjustment will, for the most part, remain sound for the next 8 to 12 years. As new circuits are completed, however, re-adjustment of individual quads may become advisable. It is expected that these subsequent adjustments will be in the nature of a few hundredths of a foot. When a quad is re-adjusted, new elevation lists will be published and the date of the re-adjustment will replace the "1965" at the end of the bench mark description. Two bench marks in the same quad with different adjustment dates will not normally join each other. Since all adjustments taper out to nothing at the periphery of the quad, any bench mark in one quad will join any bench mark in another quad regardless of their respective adjustment dates.

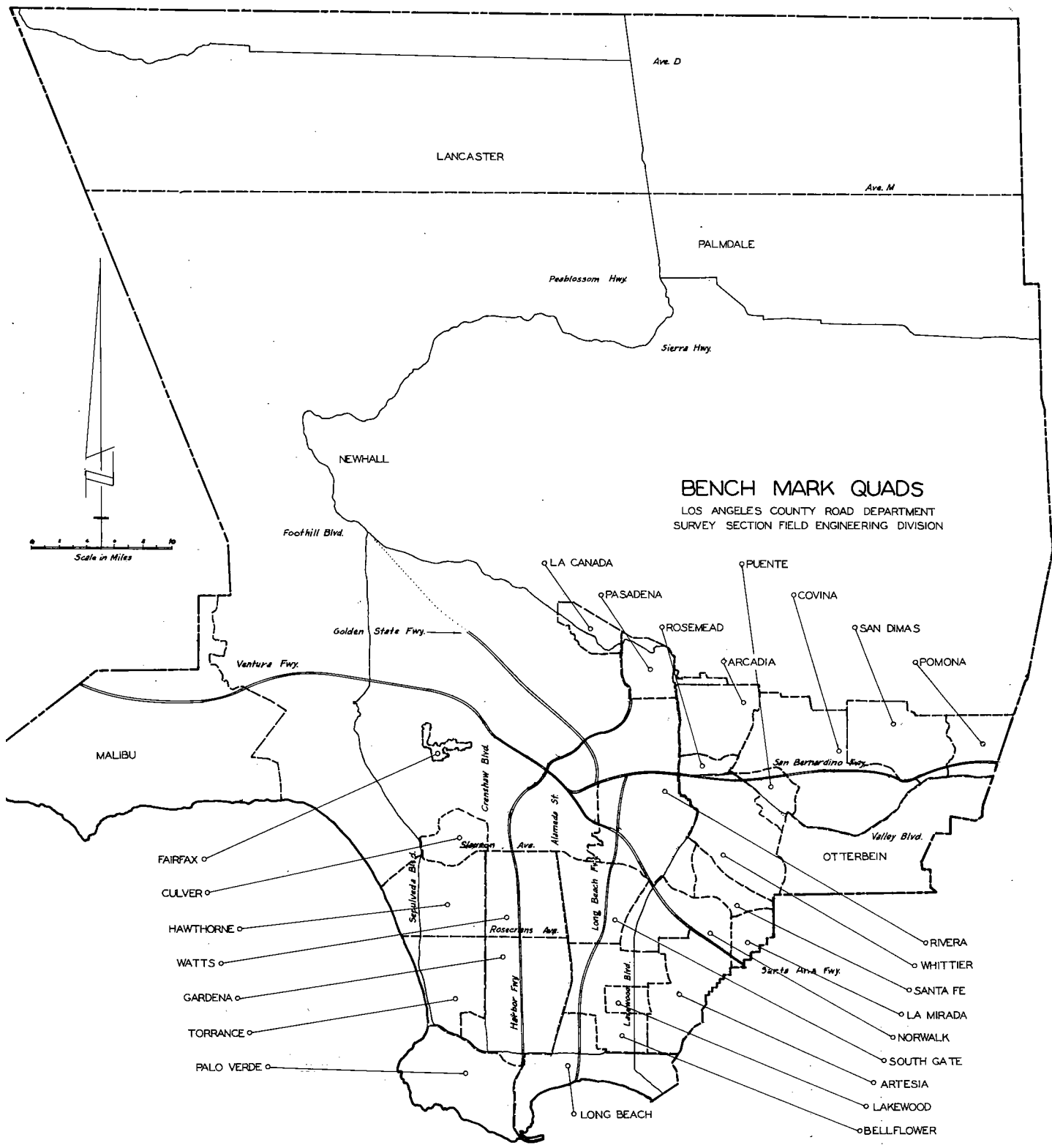
The basic accuracy of the net is reflected by an indicated field probable error of plus or minus 0.012 foot per mile of leveling as determined from 298 conditions of closure. However, many years experience in vertical control in the greater Los Angeles basin and Antelope Valley indicate that because of varying degrees of subsidence and heaving, the true datum is recovered only by obtaining substantial agreement of a number of bench marks.

The users of this net are invited to assist in its maintenance by notifying this Department of cases of obliteration, apparent mistakes in descriptions or elevations, and proven disturbance of bench marks.

DATUM: U. S. Coast and Geodetic Survey Sea Level Datum
of 1929, through the medium of the Los Angeles
County Engineer Precise Level Net, 1963 Adjust-
ment.

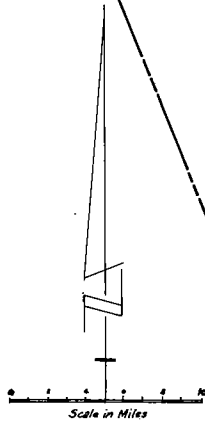
Abbreviations Used in Bench Mark Listings

ABUT--Abutment	L+BN--Lead and Bench Mark Nail
ANG PT--Angle Point	L+BR--Lead and Brad
BC--Beginning of Curve	L+N--Lead and Nail
BCR--Beginning of Curb Return	L+PK--Lead and PK Nail
BLDG--Building	L+SPK--Lead and Spike
BT SPK--Boat or Bolt Spike	L+T--Lead and Tack
CB RET--Curb Return	MCR--Middle of Curb Return
C/L INT--Center Line Intersection	MKD--Marked
C/L PROD--Center Line Produced	NR--Near
COE--Corps of Engineers	OPP--Opposite
CONC--Concrete	PI--Point of Intersection
CS MON--County Surveyor Monument	PK+W--PK Nail and Washer
CS BR CAP--County Surveyor Brass Cap Monument	P/L--Property Line
CT SPK--Cut Spike	P O S T--Point on Semi-tangent
CTR--Center	PP--Power Pole
DN--Down	PVMT--Pavement
DR--Driveway	R D--Road Department
EC--End of Curve	RDBM--Road Department Bench Mark
ENT--Entrance	RR--Railroad
FC--Flood Control (Dept. LA County)	SPK T+W--Spike, Tin and Washer
FTG--Footing	USC+GS--United States Coast and Geodetic Survey
HDWL--Headwall	USGS--United States Geological Survey
HSE--House	WK--Walk
IP--Iron Pipe	±--Plus or Minus
LACE--Los Angeles City Engineer	+--And



BENCH MARK QUADS

LOS ANGELES COUNTY ROAD DEPARTMENT
SURVEY SECTION FIELD ENGINEERING DIVISION



TO

TELEGRAPH RD.

PARAMOUNT BLVD.
DOWNEY AVE.

LAKELWOOD BLVD.

WOODRUFF AVE.

STUDEBAKER RD.
ORR & DAY RD.

PIONEER BLVD.

TO SOUTH GATE QUAD

FLORENCE AVE.
CHEROKEE DR.

FIRESTONE BLVD.

ALAMEDA ST.

IMPERIAL HWY.

GARDENDALE ST.

ROSECRANS AVE.

COMPTON BLVD.

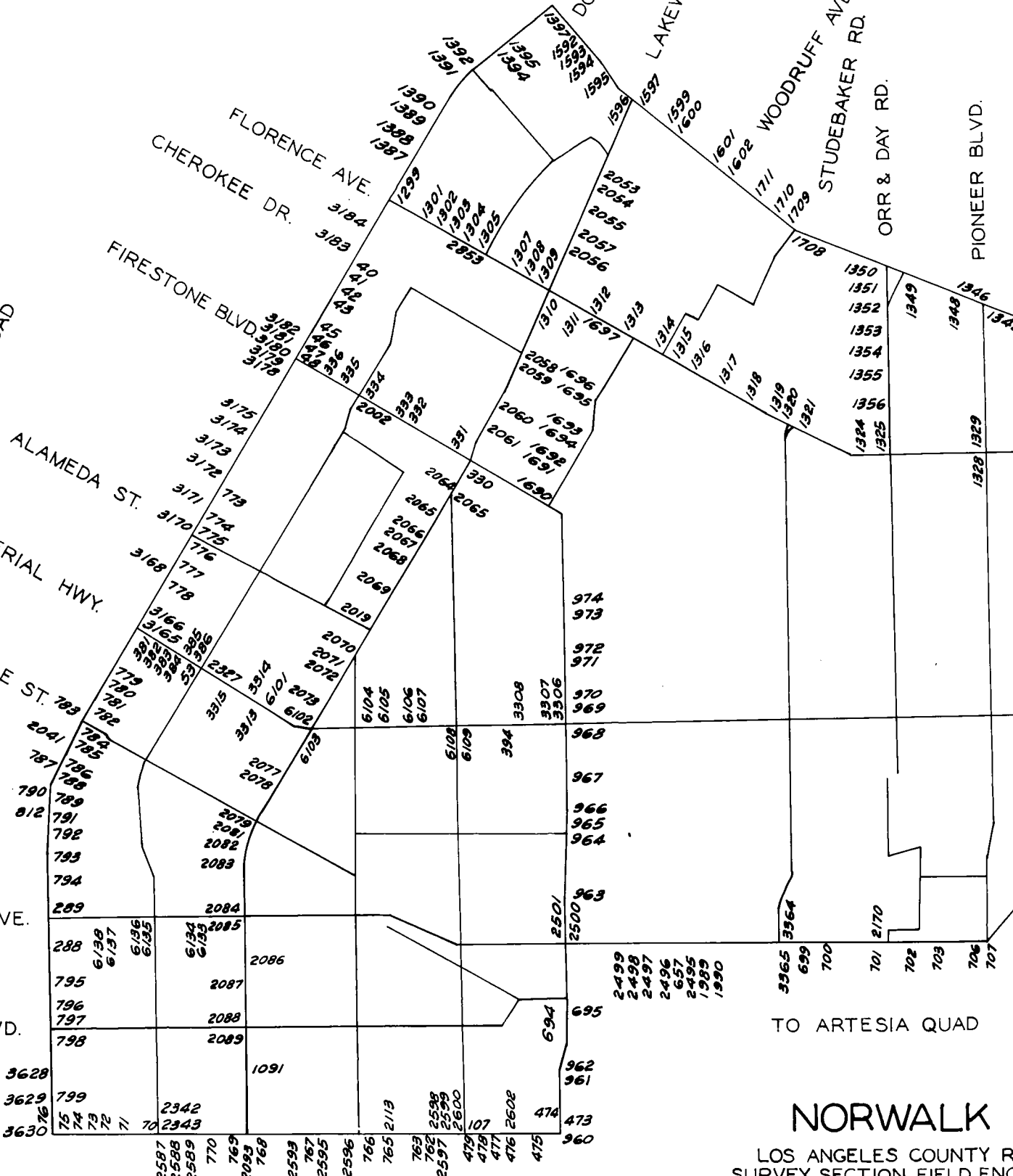
ALONDRA

TO BELLFLOWER QUAD

TO ARTESIA QUAD

NORWALK

LOS ANGELES COUNTY R
SURVEY SECTION FIELD ENC



TO RIVERA QUAD

WODRUFF AVE.
STUDEBAKER RD.
ORR & DAY RD.

PIONEER BLVD.

NORWALK BLVD.

SCALE - 1 MILE

TO SANTA FE QUAD

CARMENITA AVE.

TO LA MIRADA QUAD

LEFFINGWELL RD.

VALLEY VIEW AVE.

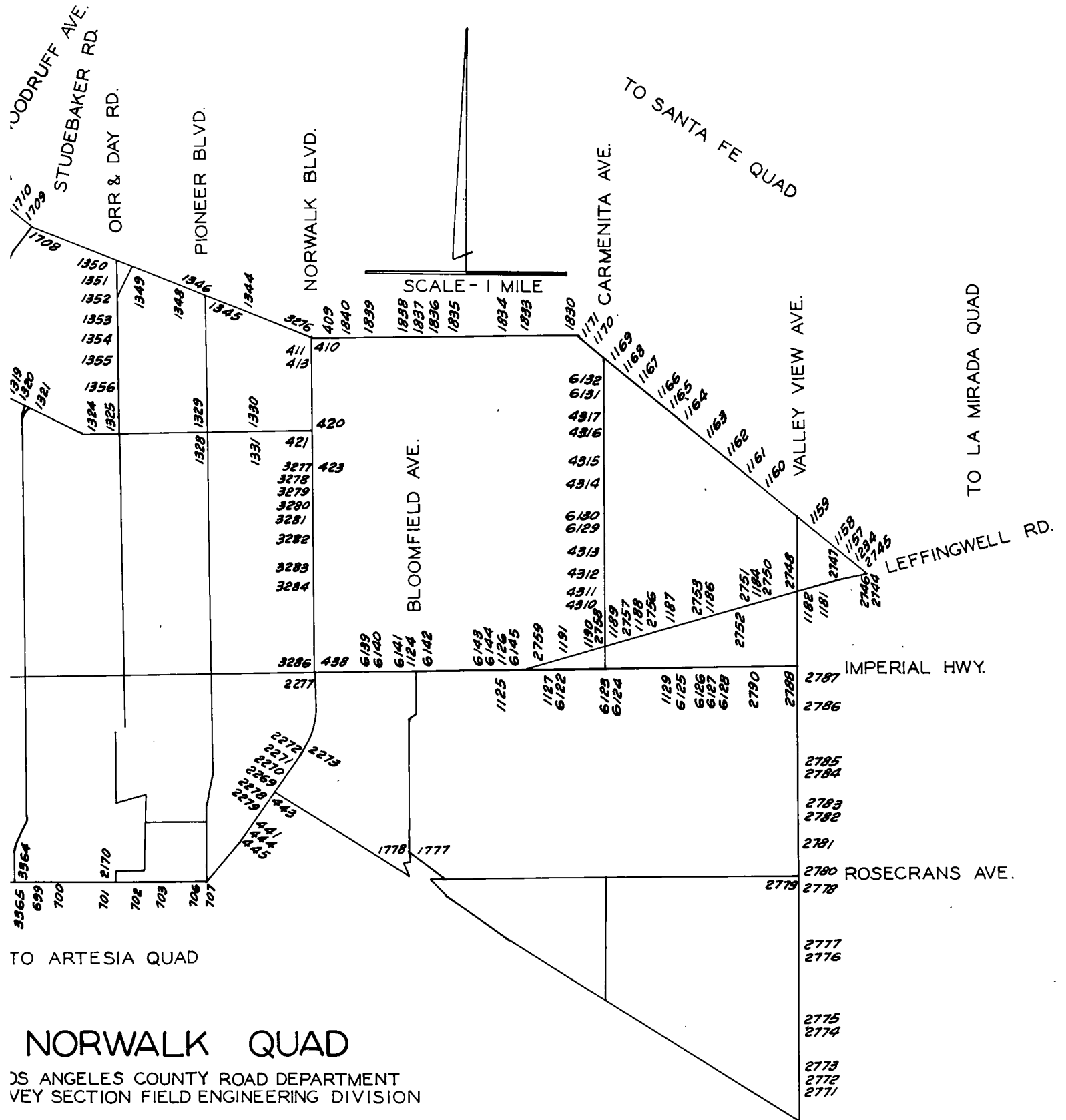
IMPERIAL HWY.

ROSECRANS AVE.

TO ARTESIA QUAD

NORWALK QUAD

S ANGELES COUNTY ROAD DEPARTMENT
VEY SECTION FIELD ENGINEERING DIVISION



QUAD-YEAR	ELEV	DESCRIPTION (INCLUDE QUAD AND YEAR IN DESCRIPTION)	BM	NUMBER
BASELINE (1955)	122.524	L+BN 17FT# W CB RET SW COR HARPER AVE + PARAMOUNT BLVD	SY	40A
BASELINE (1955)	121.079	L+SPK 5FT# S CB RET SW COR 7TH ST + PARAMOUNT BLVD	SY	41
BASELINE (1955)	118.719	L+SPK 13FT# S CB RET SW COR 6TH ST + PARAMOUNT BLVD	SY	42
BASELINE (1955)	117.993	L+SPK 8FT# N CB RET NW COR 5TH ST + PARAMOUNT BLVD	SY	43
BASELINE (1955)	117.502	L+SPK 12FT# N CB RET NW COR 4TH PL + PARAMOUNT BLVD	SY	45
BASELINE (1955)	116.813	L+SPK 6FT# S CB RET SW COR 3RD ST + PARAMOUNT BLVD	SY	46
BASELINE (1955)	116.473	L+SPK 18FT# N CB RET NW COR 2ND ST + PARAMOUNT BLVD	SY	47
BASELINE (1955)	116.211	L+T CTR CB RET NE COR FIRESTONE BLVD + PARAMOUNT BLVD	SY	48A
NORWALK (1960)	100.783	L+SPK CONC PVMT 1FT# W C/L DOWNEY AVE 9FT# S C/L IMPERIAL HWY	SY	53
BASELINE (1955)	66.674	L+T C/L PVMT ALONDRA BLVD 100FT# W C/L DOWNEY AVE	SY	70A
BASELINE (1955)	67.312	L+T C/L INT INDIANA AVE + ALONDRA BLVD	SY	71A
BASELINE (1955)	67.929	CUT SPK 6FT# N C/L INT VIRGINIA AVE + ALONDRA BLVD	SY	72A
BASELINE (1955)	68.528	BT SPK PVMT 7FT# N C/L INT GEORGIA AVE + ALONDRA BLVD	SY	73
BASELINE (1955)	69.048	SPK PVMT 7FT# N C/L INT CRIZABA AVE + ALONDRA BLVD	SY	74A
BASELINE (1955)	68.779	SPK PVMT 8FT# N C/L INT CALIFORNIA AVE + ALONDRA BLVD	SY	75A
BASELINE (1955)	68.751	L+T IN N CB ALONDRA BLVD 15FT# W OF CB RET @ NW COR ALONDRA BLVD + PARAMOUNT BLVD	SY	76B
BASELINE (1955)	74.665	L+T SW STRADDLER @ C/L INT BELLFLOWER BLVD + CENTER ST	SY	107A
BASELINE (1955)	73.731	4.5 IN IP WITH L+T 6IN BACK WK ON SE COR PARAMOUNT BLVD + ROSECRANS AVE 244FT# S C/L 50FT# E C/L INT MKD (LAC 32)	SY	288A
BASELINE (1955)	77.795	L+BN IN SE COR OF SIGNAL BASE NO 130 ON SE COR ROSECRANS AVE + PARAMOUNT BLVD 41FT# S + 65FT# E C/L INT	SY	289A
NORWALK (1960)	111.563	L+T NR CB RET @ SE COR LAKEWOOD BLVD + FIRESTONE BLVD	SY	330
NORWALK (1960)	111.757	L+T S CB FIRESTONE BLVD 1FT# E CB RET @ NASH AVE	SY	331
NORWALK (1960)	114.831	L+T S CB FIRESTONE BLVD 1FT# E CB RET @ SE COR CHURCH ST	SY	332A
NORWALK (1960)	114.732	L+T S CB FIRESTONE BLVD 1FT# E CB RET @ SE COR DOLAN ST	SY	333A

JUL 1964

LOS ANGELES COUNTY ROAD DEPARTMENT
SURVEY SECTION FIELD ENGINEERING DIVISION

PAGE 2

QUAD-YEAR	ELEV	DESCRIPTION (INCLUDE QUAD AND YEAR IN DESCRIPTION)	BM NUMBER
NORWALK (1960)	115.611	L+T CTR CB RET @ SW COR FIRESTONE BLVD + DOWNEY AVE	SY 334
NORWALK (1960)	113.458	L+T S CB FIRESTONE BLVD 1FT# E CB RET @ SE COR LA RENA AVE	SY 335
NORWALK (1960)	112.693	L+T CB FIRESTONE BLVD 1 FT# E CB RET @ SE COR MYRTLE ST	SY 336
NORWALK (1960)	96.404	L+BN CB 1FT# E/O ECR @ SE COR IMPERIAL HWY + 1FT# E BCR SERVICE RD	SY 381
NORWALK (1960)	96.753	L+T CB SE COR IMPERIAL HWY + ORIZABA AVE @ BCR SERVICE RD	SY 382
NORWALK (1960)	96.965	L+BN 1FT# E/O ECR @ SE COR IMPERIAL HWY + LA RINA AVE (SERVICE RD)	SY 383
NORWALK (1960)	97.661	L+BN 1FT# E/O ECR @ SE COR IMPERIAL HWY + GNEISS AVE (SERVICE RD)	SY 384
NORWALK (1960)	98.802	L+T CB 1FT# E/O ECR @ SE COR IMPERIAL HWY + GURLEY AVE (SERVICE RD)	SY 385
NORWALK (1960)	100.311	L+T CB RET 2FT# N ECR @ SW COR IMPERIAL HWY + DOWNEY AVE	SY 386
NORWALK (1960)	93.791	CUT SPK PVMT 9FT# N/O C/L IMPERIAL HWY 15FT# W/O C/L DUNROBIN ST	SY 394
BASELINE (1955)	142.433	CUT SPK NW END CONC ISLAND @ SW COR ANAHEIM- TELEGRAPH RD + NORWALK BLVD	SY 409A
BASELINE (1955)	140.867	CS MON @ INT NORWALK BLVD + ANAHEIM-TELEGRAPH RD	SY 410
NORWALK (1960)	137.889	BR CAP IN WELL 1.5FT DN W C/L NORWALK-BLVD @ C/L PROD PARK AVE	SY 411A
NORWALK (1960)	137.543	BR CAP IN WELL 1.5FT DN 40FT# W C/L NORWALK BLVD A C/L PROD GARDENER AVE	SY 413
NORWALK (1960)	OUT 133.430	CUT SPK IN WELL 1.5FT DN 50FT# E C/L NORWALK BLVD 30FT# S C/L FLORENCE AVE	SY 420
NORWALK (1960)	OUT 133.430	COSUR MON IN WELL 4IN DN @ CR NEAR C/L INT NORWALK BLVD + FLORENCE AVE	SY 421A
NORWALK (1960)	OUT 126.937	CUT SPK IN WELL 18 IN DN 50FT# E + 30FT# S C/L INT NORWALK BLVD + MEYERS RD (LAKELAND AVE)	SY 423
NORWALK (1960)	106.906	L+N SE COR WIER BOX 25FT# E C/L NORWALK BLVD 8/FT# S C/L IMPERIAL HWY	SY 438
BASELINE (1955)	94.838	L+T 1FT# N CB RET @ NE COR PINE ST + SAN ANTONIO DR	SY 441
BASELINE (1955)	96.495	L+T 5FT# N CB RET @ NW COR SAN ANTONIO DR + FRONT ST	SY 443A
BASELINE (1955)	93.518	L+T 2FT# E END CF CB @ SE COR WALNUT ST + SAN ANTONIO DR	SY 444A
BASELINE (1955)	93.225	L+T 2FT# E CB RET @ NE COR SYCAMORE ST + SAN ANTONIO DR	SY 445A
BASELINE (1955)	73.510	CS REF MON IN WELL 14IN DN ON NE COR ALCNDRA BLVD + WOODRUFF BLVD 56FT# N + 60FT# E C/L INT MKD (CLEARWATER K 2A)	SY 473A

QUAD-YEAR	ELEV	DESCRIPTION (INCLUDE QUAD AND YEAR IN DESCRIPTION)	BM NUMBER
BASELINE (1955)	74.125	CSBM MON FLUSH ON NE COR ALONDRA BLVD + WOODRUFF AVE 39FT± N + 180FT± W C/L INT MKD (BM 6-6A1958)	SY 474A
BASELINE (1955)	74.844	L+N 80FTS8 S C/L ALONDRA BLVD W CB CORNUTA AVE	SY 475
BASELINE (1955)	75.150	L+N W CB EUCALYPTUS AVE 80FT± S C/L ALONDRA BLVD	SY 476A
BASELINE (1955)	75.083	L+N E CB EUCALYPTUS AVE 80FT± S C/L ALONDRA BLVD	SY 477A
BASELINE (1955)	75.556	L+T E CB LEAHY AVE 80FT± N C/L ALONDRA BLVD	SY 478A
BASELINE (1955)	75.541	L+T W CB LEAHY AVE 80FT± N C/L ALONDRA BLVD	SY 479A
BASELINE (1955)	80.895	RDBM TAG W CB 6FT± S BCR @ SW COR WOODRUFF AVE + WASHINGTON ST 50FT± S + 40FT± W C/L INT	SY 694A
BASELINE (1955)	81.132	RD HD SPK + L W CB 25FT± N BCR @ NW COR WOODRUFF AVE + WASHINGTON ST 70FT± N + 40FT± W C/L INT MKD (BM 26)	SY 695A
BASELINE (1955)	87.876	FC BRONZE DISC @ SW COR DAIRY PLATFORM 75FT± N C/L ROSECRANS AVE 300FT± E SAN GABRIEL RIV BRIDG	SY 697A
BASELINE (1955)	84.708	L+N 1FT± E BCR @ SE COR ROSECRANS AVE + CROSSDALE AVE	SY 699A
BASELINE (1955)	85.015	L+N 1FT± E BCR @ SE COR ROSECRANS AVE + ELMCROFT AVE	SY 700A
BASELINE (1955)	84.518	L+T N CB ROSECRANS AVE 36FT± N C/L + 37FT± W C/L PROD GRIDLEY RD	SY 701B
BASELINE (1955)	85.404	L+N 1FT± E BCR @ SE COR ROSECRANS AVE + GARD AVE	SY 702A
BASELINE (1955)	86.960	L+N 1FT± S BCR @ SE COR ROSECRANS AVE + JERSEY AVE	SY 703A
BASELINE (1955)	86.716	CS MON IN WELL 13IN DN ON NW COR ROSECRANS AVE + PIONEER BLVD 86FT± N + 40FT± W C/L INT MKD (WHITTIER C 124 1959)	SY 706A
BASELINE (1955)	87.258	RDBM MON FLUSH IN CONC SQ POST ON SW COR ROSECRANS AVE + ARLEE AVE 835FT± + 20FT± W C/L INT MKD (BM 184)	SY 707A
BASELINE (1955)	73.092	L+T INT ORCHARD AVE + ALONDRA BLVD	SY 762A
BASELINE (1955)	72.138	L+T 2FT± W CB RET NW COR RYON AVE + ALONDRA BLVD	SY 763A
BASELINE (1955)	74.034	L+BN S CB ALONDRA BLVD 6IN E CB RET @ SE COR ALONDRA BLVD + PACIFIC AVE 70FT± W PERR	SY 765B
BASELINE (1955)	68.914	L + SPK 4FT± E CB RET @ NE COR CLARK AVE + ALONDRA BLVD	SY 766A
BASELINE (1955)	69.941	L+T C/L INT VIRGINIA DR + ALONDRA BLVD	SY 767A
BASELINE (1955)	69.796	L+T C/L INT LAKEWOOD BLVD + ALONDRA BLVD	SY 768

QUAD-YEAR	ELEV	DESCRIPTION (INCLUDE QUAD AND YEAR IN DESCRIPTION)	BM NUMBER
BASELINE (1955)	68.760	L+T C/L INT PITTS AVE + ALONDRA BLVD	SY 769A
BASELINE (1955)	67.854	L+T C/L HAYTER AVE 8FT± S C/L ALONDRA BLVD	SY 770A
BASELINE (1955)	108.639	L+N IN WK 50FT± N C/L COLE ST 50FT± W C/L PARAMOUNT BLVD	SY 773A
BASELINE (1955)	107.723	L+N NR N END CB RET @ NW COR PARAMOUNT BLVD + ALBIA ST	SY 774A
BASELINE (1955)	106.320	CUT SPK CONC PVMT 14FT± W C/L PARAMOUNT BLVD ON C/L PROD ALAMEDA ST	SY 775A
BASELINE (1955)	106.272	L+N CTR CB RET @ SW COR MELVA ST + PARAMOUNT BLVD	SY 776A
BASELINE (1955)	105.113	L+T 14FT± E C/L PARAMOUNT BLVD 11FT± N C/L SPRINGER ST PROD IN CONC PVMT	SY 777A
BASELINE (1955)	104.182	L+T IN CONC 14FT± E C/L PARAMOUNT BLVD 4FT±N C/L GUILL DR PROD	SY 778A
BASELINE (1955)	90.673	L+N NR N END CB RET @ NE COR PARAMOUNT BLVD + ADGREE AVE	SY 779A
BASELINE (1955)	89.399	SPK + W @ INT PARAMOUNT BLVD + DEVENIR AVE	SY 780A
BASELINE (1955)	87.190	ST + W @ INT PARAMOUNT BLVD + COUNTRY FARM DR	SY 781A
BASELINE (1955)	85.993	SPK + W @ INT PARAMOUNT BLVD + PRICILLA AVE	SY 782A
BASELINE (1955)	82.802	CS MON 16FT± W + 5FT± S INT PARAMOUNT BLVD + GARDENDALE ST	SY 783
BASELINE (1955)	83.155	L+T IN E CB PARAMOUNT BLVD 3FT± S OF CB RET @ SE COR PARAMOUNT BLVD + MCKINLEY AVE	SY 784A
BASELINE (1955)	82.722	L+T IN E CB PARAMOUNT BLVD 21FT± N OF CB RET @ NE COR PARAMOUNT BLVD + ALHAMBRA AVE	SY 785A
BASELINE (1955)	81.564	L+T IN N CB GOLDEN AVE 4FT± W OF CB RET @ NE COR PARAMOUNT BLVD + GOLDEN AVE	SY 786B
BASELINE (1955)	81.250	L+T NEAR CTR OF CB RET @ SE COR PARAMOUNT BLVD + GOLDEN AVE	SY 787B
BASELINE (1955)	80.842	L+SPK E CB PARAMOUNT BLVD 50FT± S C/L HARDING AVE PROD	SY 788B
BASELINE (1955)	80.403	L+T IN E CB PARAMOUNT BLVD 35FT± N OF C/L LINCOLN AVE PROD	SY 789A
BASELINE (1955)	79.708	L+T IN E CB PARAMOUNT BLVD 2FT S OF CB RET @ NE COR PARAMOUNT BLVD + FLORENCE AVE	SY 790A
BASELINE (1955)	78.047	L+T IN CB RET @ NE COR PARAMOUNT BLVD + CENTURY BLVD 10FT± S OF BCR ON PARAMOUNT BLVD	SY 791A
BASELINE (1955)	76.586	BT SPK 1FT± S CB RET @ SW COR PARAMOUNT BLVD + PEARLE ST	SY 792A
BASELINE (1955)	75.825	BT SPK BCR @ SW COR PARAMOUNT BLVD + HOWE ST	SY 793A

QUAD-YEAR	ELEV	DESCRIPTION (INCLUDE QUAD AND YEAR IN DESCRIPTION)	BM NUMBER
BASELINE (1955)	76.617	BT SPK CTR CB RET @ NW COR PARAMOUNT BLVD + ROSE ST	SY 794A
BASELINE (1955)	71.848	L+T W CB PARAMOUNT BLVD C/L PROD 3RD ST	SY 795A
BASELINE (1955)	72.955	BT SPK 1FT± S CB RET SE COR PARAMOUNT BLVD + 1ST ST	SY 796A
BASELINE (1955)	72.657	CS MON 17FT± W INT PARAMOUNT BLVD + COMPTON BLVD	SY 797A
BASELINE (1955)	72.712	L+T CTR CB RET SE COR PARAMOUNT BLVD + ADAMS ST	SY 798
BASELINE (1955)	68.962	L+T W CB PARAMOUNT BLVD 2FT± N CB RET @ NW COR MADISON ST + PARAMOUNT BLVD	SY 799A
BASELINE (1955)	77.504	L+T IN W CB PARAMOUNT BLVD 5.5FT± SO OF CB RET @ SW COR CENTURY BLVD + PARAMOUNT BLVD	SY 812A
BASELINE (1955)	73.861	L+T S CB ALONDRA BLVD 68FT± W C/L WOODRUFF AVE	SY 960A
BASELINE (1955)	77.152	L+T NR S EDGE CONC DRWY 55FT± W C/L WOODRUFF AVE DRWY TO HSE NO 15509	SY 961
BASELINE (1955)	78.775	L+T NR S EDGE N STRIP CONC DRWY 50FT± E C/L WOODRUFF AVE @ HSE NO 15304	SY 962
NORWALK (1960)	88.195	RDBM TAG W CB WOODRUFF AVE 40FT± W/O C/L 20FT± S/O C/L PROD ARTHURDALE ST	SY 963A
NORWALK (1960)	90.274	CS MON IN WELL 6 INCHES DN @ OR NEAR C/L INT WOODRUFF AVE + FOSTER RD MKD (RE 329)	SY 964A
NORWALK (1960)	90.696	L+T N CB 1.5FT± W BCR @ NW COR WOODRUFF AVE + FOSTER RD 36FT± N/O + 100FT± W/O C/L INT MKD (BM)	SY 965
NORWALK (1960)	91.254	L+T 1FT± W ECR @ SW COR WOODRUFF AVE + BELCHER ST	SY 966
NORWALK (1960)	92.021	L+T 1FT± S BCR @ SW COR RATLIFF ST + WOODRUFF AVE SERVICE RD	SY 967
NORWALK (1960)	95.608	RDBM TAG S CB 5FT± W/O BCR @ SE COR IMPERIAL HWY + WOODRUFF AV 41FT± S/O + 65FT± E/O C/L INT	SY 968A
NORWALK (1960)	98.591	LS TAG NO 2428 E CB WOODRUFF AVE ON OR NEAR C/L PROD EVEREST ST 55FT± E/O C/L IN ENTRANCE TO SCHOOL BUS DRIVE	SY 969A
NORWALK (1960)	97.657	CITY OF DOWNEY MON IN WELL 10 INCHES DN @ OR NEAR C/L INT WOODRUFF AVE + EVEREST ST MKD (MON 13)	SY 970A
NORWALK (1960)	100.905	RDBM TAG W CB 45FT± S/O ECR @ SW COR WOODRUFF AVE + WASHBURN RD 90FT± S/O + 40FT± W/O C/L INT	SY 971A
NORWALK (1960)	100.656	CS MON IN WELL 10 INCHES DN @ OR NEAR C/L INT WOODRUFF AVE + WASHBURN RD MKD (CO SUR MON RE329)	SY 972A
NORWALK (1960)	104.046	RDBM TAG W CB 1FT± S/O BCR @ SW COR WOODRUFF AVE + STEWART+GRAY RD 70FT± S/O + 40FT± W/O C/L INT	SY 973A
NORWALK (1960)	103.788	CITY OF DOWNEY MON IN WELL 14 INCHES DN @ OR NEAR C/L INT WOODRUFF	SY 974A

JUL 1964

LOS ANGELES COUNTY ROAD DEPARTMENT
SURVEY SECTION FIELD ENGINEERING DIVISION

PAGE 6

QUAD-YEAR	ELEV	DESCRIPTION (INCLUDE QUAD AND YEAR IN DESCRIPTION)	BM NUMBER
NORWALK (1960)	77.654	RAILROAD SPK @ INT PERR (SANTA ANA LINE) + LAKEWOOD BLVD	SY 1091
NORWALK (1960)	110.810	CS MON INT BLOOMFIELD AV + IMPERIAL HWY	SY 1124
NORWALK (1960)	122.614	L+T WLY CB 1FT± NLY BCR @ NWLY COR IMPERIAL HWY + SHOEMAKER AVE 80FT± NLY + 32FT± WLY APPROX C/L INT	SY 1125A
NORWALK (1960)	121.400	L+T W END CONC STEP HSE NO 13011 50FT± N C/L IMPERIAL HWY @ NE COR SHOEMAKER AVE	SY 1126
NORWALK (1960)	101.138	L+T CONC BASE W GATE POST 55FT± S C/L IMPERIAL HWY 20FT± W PP NO 654558E APPROX 1000FT± E LEFFINGWELL RD	SY 1127
NORWALK (1960)	103.842	L+T N CB CTR BRIDGE NO 816 ON IMPERIAL HWY BETWEEN CARMENITA RD + MEYER RD	SY 1129
BASELINE (1955)	144.402	CS TRI MON IN WELL 8IN DN 0.2MI± N IMPERIAL HWY + 11FT± W C/L VALLEY VIEW AVE NR CREST OF HILL MKD (WHITTIER I-10A)	SY 1131A
BASELINE (1955)	188.898	L+T 10FT± S BCR @ NW COR TELEGRAPH RD + COLIMA RD 64FT± N + 21FT± W C/L INT	SY 1158A
BASELINE (1955)	195.476	CS TRI MON IN WELL 12IN DN @ DR NR C/L INT TELEGRAPH RD + VALLEY VIEW AVE (N) MKD (WHITTIER I-9 AUX 1 1960)	SY 1159A ^B
BASELINE (1955)	175.619	L+SPK N BCR @ NE COR TELEGRAPH RD + CERES ST 61FT± N + 20FT± E C/L INT MKD (WZ 399)	SY 1160A ^B
BASELINE (1955)	167.625	L+N CTR RET PKWY TO HUGHSTON MEADOWS INN 45FT± S C/L TELEGRAPH RD (NO 1440)	SY 1161A
BASELINE (1955)	134.857	L+T N CB 1FT± W BCR @ NW COR TELEGRAPH RD + VICTORIA AVE 42FT± N + 48FT± W C/L INT	SY 1162C
BASELINE (1955)	135.237	RDSM TAG E CB ON NE COR TELEGRAPH RD + VICTORIA AVE 88FT± N + 20FT± E C/L INT	SY 1163B
BASELINE (1955)	154.653	RD HD SPK NE COR CONC APRON GAS STA SW COR TELEGRAPH RD + MILLS AVE 515FT± S + 55FT± W C/L INT MKD (WZD 75)	SY 1164A
BASELINE (1955)	155.291	CT SPK CONC CB 20FT± N C/L TELEGRAPH RD + 28FT± E MILLS AVE	SY 1165A
BASELINE (1955)	148.780	L+N @ END OF CB 175FT W SANTA FE RR TRACKS + 33FT S C/L TELEGRAPH RD W OF LELAND AVE	SY 1166A
BASELINE (1955)	162.881	L+N 4FT± W BCR @ SW COR INEZ ST + TELEGRAPH RD	SY 1167A ^B
BASELINE (1955)	161.965	L+T 1FT± W BCR @ SW COR MINA ST + ANAHEIM TEL RD	SY 1168A
BASELINE (1955)	157.582	L+T N CB 3FT± E OF BCR @ NE COR TELEGRAPH RD + CARMENITA RD 38FT± N + 50FT± E C/L INT	SY 1169A
BASELINE (1955)	156.696	CS TRI MON IN WELL 14IN DN SE COR TELEGRAPH RD + CARMENITA RD 15FT± S + 25FT± E C/L INT MKD (WHITTIER G8)	SY 1170A
BASELINE (1955)	158.581	L+T N CB 36FT± W BCR @ NW COR TELEGRAPH R + LAUREL AVE 30FT± N + 92FT± W C/L INT	SY 1171A

JUL 1964

LCS ANGELES COUNTY ROAD DEPARTMENT
 SURVEY SECTION FIELD ENGINEERING DIVISION

PAGE 7

QUAD-YEAR	ELEV	DESCRIPTION (INCLUDE QUAD AND YEAR IN DESCRIPTION)	BM NUMBER
BASELINE (1955)	161.900	L+T E EDGE CONC DRWY HSE NO 14312 37FT± S C/L LEFFINGWELL RD	SY 1181
BASELINE (1955)	158.642	CS REF MON IN WELL 13IN DN ON SE LY COR VALLEY VIEW AVE + LEFFINGWELL RD 50FT± S + 60FT± E C/L INT MKD (RM NO 41-10 1960)	SY 1182A
NORWALK (1960)	111.248	(X) TOP FIRE PLUG @ NE COR LOMA DR + LEFFINGWELL RD	SY 1184A
NORWALK (1960)	109.374	L+T ELY CB 7FT± NLY BCR @ NELY COR LEFFINGWELL RD + MEYER RD 48FT± NLY * 40FT± ELY APPROX C/L INT	SY 1186A
NORWALK (1960)	110.350	RD HD SPK WLY CB 5FT± SLY BCR @ SWLY COR LEFFINGWELL RD + LELAND AVE 100FT± SLY 17FT± W/O A---CC C/L + N MK+80 (1604) APPROX MKD (SD 1604)	SY 1187A
NORWALK (1960)	114.603	L+T NW COR CONC DRWY 60FT± S C/L LEFFINGWELL RD @ HSE NO 13474 + 40FT± W C/L INEZ ST	SY 1188
NORWALK (1960)	117.078	L+T S END E GAS ISLAND SERVICE STATION @ NE COR CARMENITA RD + LEFFINGWELL RD	SY 1189
NORWALK (1960)	114.666	L+T 1FT± FROM END CONC WK 50FT± N C/L LEFFINGWELL RD + 70FT± E LOUIS AVE	SY 1190
NORWALK (1960)	124.599	L+T E EDGE CONC DRWY E HSE NO 12175 50FT± N C/L LEFFINGWELL RD + 180FT± W C/L LAUREL AVE	SY 1191
BASELINE (1955)	188.768	CS MON IN WELL 6IN DN ON C/L TELEGRAPH RD 10FT± ELY C/L COLIMA RD MKD (CD. ENG. MON RE 5869)	SY 1234A
BASELINE (1955)	126.051	SET RDBM TAG N CB 1FT± E BCR @ NE COR PARAMGUNT BLVD + FLORENCE AVE 40FT± N + 68FT± E C/L INT	SY 1299A
NORWALK (1960)	124.873	L+B S CB 15FT± W OF BCR @ SW COR FLORENCE AVE + LA REINA AVE 40FT± S + 68FT± W C/L INT MKD (BM)	SY 1301A
NORWALK (1960)	125.299	L+T 40FT± S C/L FLORENCE AVE @ OR NEAR C/L PRCD LA REINA AVE TO THE N MKD (BM)	SY 1302A
NORWALK (1960)	126.178	L+T 5FT± E END CB @ SE COR DOWNEY AVE + FLORENCE AVE 50FT± E C/L DOWNEY AVE TO THE S	SY 1303
NORWALK (1960)	127.049	L+BN 40FT± E MAC DRWY TO HSE NO 8406 S CB FLORENCE AVE 700FT± E DOWNEY AVE	SY 1304
NORWALK (1960)	129.770	L+T 2FT± W END CB 40FT± S C/L FLORENCE AVE 62FT± W C/L LEXINGTON-GALLATIN RD	SY 1305
NORWALK (1960)	127.780	L+T 2IN± E CB RET SE COR BIRCHDALE AVE + FLORENCE AVE	SY 1307
NORWALK (1960)	127.089	L+T 1IN± E CB RET @ SE COR FLORENCE AVE + FLORENCIA AVE	SY 1308
NORWALK (1960)	126.361	L+BN W CB 16FT± S BCR @ SW COR FLORENCE AVE + LAKEWOOD BLVD 80FT± S + 40FT± W C/L INT MKD (BM)	SY 1309A
NORWALK (1960)	125.715	L+BN E CB (DEPRESSED) 15FT± S OF BCR @ SE COR FLORENCE AVE + LAKEWOOD BLVD 90FT± S + 40FT± E C/L INT MKD (BM)	SY 1310A
NORWALK (1960)	125.527	L+T S CB 38FT± S C/L OF FLORENCE AVE 48FT± W C/L HAILETON AVE (PRCD) MKD (BM)	SY 1311A
NORWALK (1960)	125.801	L+T W CB 4FT± N OF BCR @ NW COR HAILETON AVE + FLORENCE AVE 78FT± N + 20FT± W C/L INT MKD (BM)	SY 1312A

JUL 1964

LOS ANGELES COUNTY ROAD DEPARTMENT
SURVEY SECTION FIELD ENGINEERING DIVISION

PAGE 8

QUAD-YEAR	ELEV	DESCRIPTION (INCLUDE QUAD AND YEAR IN DESCRIPTION)	BM	NUMBER
NORWALK (1960)	128.781	L+PK 38FT± N C/L FLORENCE AVE 21FT± W C/L PROD OF WOODRUFF AVE	SY	1313A
NORWALK (1960)	125.175	RDBM TAG N CB 1FT± W OF BCR @ NW COR DOWNEY- SANFORD BRIDGE RD + FLORENCE AVE 38FT± N + 55FT± N C/L INT	SY	1314A
NORWALK (1960)	124.751	L+T 38FT± S C/L FLORENCE AVE ON OR NEAR C/L PROD OF DOWNEY-SANFORD BRIDGE RD MKD (BM)	SY	1315A
NORWALK (1960)	121.210	L+T IN S CB 4FT± W OF BCR OF SW COR LESTERFORD AVE + FLORENCE AVE 38FT± S + 58FT± W C/L INT MKD (BM)	SY	1316A
NORWALK (1960)	121.436	L+SPK N EDGE CONC PVMT FLORENCE AVE ON LINE OF BRICK + IRON ORNAMENTAL FENCE E/O HSE NO 9620 150FT± W LESTERFORD AVE	SY	1317A
NORWALK (1960)	133.855	C OF ENG BR CAP N CB @ W END OF BRIDGE NO B933 ON FLORENCE AVE OVER SAN GABRIEL RIVER MKD (1959)	SY	1318A
NORWALK (1960)	131.462	C OF ENG BR CAP N CB @ E END BRIDGE NO B933 ON FLORENCE AVE OVER SAN GABRIEL RIVER MKD (1959)	SY	1319A
NORWALK (1960)	118.321	RDBM TAG S OF CB 1FT± E/O BCR @ SW COR FLORENCE AVE + FAIRFORD AVE 38FT± S + 18FT± W/O C/L	SY	1320A
NORWALK (1960)	119.722	LA CO RDBM TAG E CB 1FT± S/O BCR @ SE COR FLORENCE AVE + FAIRFORD AVE 125FT± S + 20FT± E/O C/L INT	SY	1321A
NORWALK (1960)	121.854	L+T N CB 1FT± W/O BCR @ NW COR FLORENCE AVE + ORR + DAY RD 38FT± N + 75 FT± W/O C/L INT MKD (BM)	SY	1324A
NORWALK (1960)	121.027	RDBM TAG N CB 1FT± W/O BCR @ NE COR FLORENCE AVE + ORR + DAY RD 38FT± N + 75FT± E/O C/L INT	SY	1325B
NORWALK (1960)	118.874	RDBM TAG N CB 1FT± E/O BCR @ NE COR FLORENCE AVE + PIONEER BLVD 38FT± N + 76FT ± E/O C/L INT	SY	1328A
NORWALK (1960)	118.692	RDBM TAG S CB 5FT± W/O BCR @ SE COR FLORENCE AVE + PIONEER BLVD 38FT± S/O + 70FT± E/O C/L INT	SY	1329A
NORWALK (1960)	126.706	L+BN W END CB FRONT LITTLE LAKE SCHOOL 33FT± S C/L FLORENCE AVE BET PIONEER BLVD + NORWALK BLVD	SY	1330
NORWALK (1960)	127.345	L+BN BASE OF FLAG POLE @ ENT TO LITTLE LAKE SCHOOL 67FT± S/O CL FLORENCE AVE 1000FT± W/O PIONEER BLVD	SY	1331A
BASELINE (1955)	124.288	L+BN W ED CONC BASE CONC WATER TANK 60FT± E C/L PIONEER BLVD 100FT± NE DRWY HSE NO 10325 PIONEER BLVD W STANDARD OF CALIF OIL DERRICK NO 17	SY	1344A
BASELINE (1955)	131.842	RDBM TAG IN S CB TELEGRAPH RD 2FT± W/O SW CB RET @ MIAN DRWY TO SANTA FE SPRINGS FIRE STA BLDG NO 11736 40FT± S/O C/L TELEGRAPH RD + 390FT± W/O C/L PIONEER BLVD	SY	1345A
BASELINE (1955)	131.198	L+BN 6IN CONC RETAINING WALL 55FT± S C/L TELEGRAPH RD 300FT± W C/L PIONEER BLVD	SY	1346A
BASELINE (1955)	132.177	CS MON IN WELL @ C/L INT TELEGRAPH RD + ALBURTIS AVE NLY MKD (LACS CON SYS TRA STA WHITTIER B-7 RE2177 1941)	SY	1348A
BASELINE (1955)	133.241	L+T NEAR CTR CB RT @ NE COR TELEGRAPH RD + ORR + DAY RD	SY	1349A

JUL 1964

LOS ANGELES COUNTY ROAD DEPARTMENT
SURVEY SECTION FIELD ENGINEERING DIVISION

PAGE 9

QUAD-YEAR	ELEV	DESCRIPTION (INCLUDE QUAD AND YEAR IN DESCRIPTION)	BM NUMBER
BASELINE (1955)	133.111	RDBM TAG IN W CB 1FT± S BCR 68FT± S + 38FT± W C/L INT TELEGRAPH RD + ORR + DAY RD	SY 1350A
NORWALK (1960)	130.599	L+T E CB W SERVICE RD 4FT± S BCR 50FT± W + 40FT± S C/L INT ORR + DAY RD + DAVENRICH ST MKD (BM)	SY 1351A
NORWALK (1960)	130.199	L+T W CB W SERVICE RD 15FT± S BCR 78FT± W + 60 FT± S C/L INT ORR + DAY RD + DAVENRICH ST MKD (BM)	SY 1352A
NORWALK (1960)	128.617	L+T IN E CB W SERVICE RD 12FT± N BCR 50FT± W + 46FT± N C/L INT ORR + DAY RD + DUNNING ST MKD (BM)	SY 1353A
NORWALK (1960)	128.187	L+T NE COR LAWN CB @ HSE NO 10317 ORR + DAY RD 23FT± W C/L ORR + DAY RD	SY 1354A
NORWALK (1960)	123.820	RDBM TAG IN W CB ORR + DAY RD 1FT± S BCR 40FT± W 35FT± S C/L INT CLARKMAN ST	SY 1355A
NORWALK (1960)	123.805	1IN 1P 1FT DP 20FT± E C/L ORR + DAY RD 43+91.50 72FT± N PP NO 53802E (4TH POLE N FLORENCE AVE)	SY 1356A
BASELINE (1955)	124.713	CS BR CAP CONC MON C/L INT PARAMOUNT BLVD + FLORENCE AVE	SY 1386
BASELINE (1955)	127.454	L+BN CTR CB RET SE COR LUBEC ST + PARAMOUNT BLVD	SY 1387A
BASELINE (1955)	127.674	L+BN CTR CB RET NE COR LUBEC ST + PARAMOUNT BLVD	SY 1388A
BASELINE (1955)	130.641	L+BN 2FT± FROM END W CB FRONT HSE NO 9603 PARAMOUNT BLVD	SY 1389
BASELINE (1955)	132.090	L+T CONC CB @ BCR SE COR SUVA ST + PARAMOUNT BLVD	SY 1390
BASELINE (1955)	134.473	L+T CONC CB @ BCR SE COR GALLATIN SCHOOL HOUSE RD + PARAMOUNT BLVD	SY 1391
BASELINE (1955)	134.492	L+T CONC CB @ BCR SW COR GALLATIN SCHOOL HOUSE RD + PARAMOUNT BLVD	SY 1392
BASELINE (1955)	138.713	SQ HD SPK W CB OF SERVICE RD OF PARAMOUNT BLVD 12FT± N C/L PRCD BROOKGREEN RD	SY 1394A
BASELINE (1955)	139.675	FD L+BRAD E CB 0.5FT± S BCR @ SE COR PARAMOUNT BLVD + VISTA DEL ROSA SERVICE ISLAND 40FT± E + 50FT± S C/L INT	SY 1395A
BASELINE (1955)	142.240	CS MON IN WELL 8IN DN ON C/L TELEGRAPH RD 20FT± WLY C/L PARAMOUNT BLVD MKD (BELL K4 1941)	SY 1397A
BASELINE (1955)	140.657	L+T 1FT± E BCR @ NE COR FERNADEL ST + TELEGRAPH RD (IN SERVICE RD CB)	SY 1592
BASELINE (1955)	142.851	L+BN 4FT± S BCR @ SW COR BIRCHBARK AVE + TELEGRAPH RD	SY 1593
BASELINE (1955)	145.227	L+BN 4FT± S BCR @ SW COR STAMPS RD + TELEGRAPH RD	SY 1594
BASELINE (1955)	142.440	L+BN 30FT± S BCR @ SW COR STOAKES AVE + TELEGRAPH RD	SY 1595
BASELINE (1955)	138.869	RAM SET CTR CB RET SE COR LAKEWOOD BLVD + TELEGRAPH RD 55FT± S + 55FT± E C/L INT	SY 1596

