

COUNTY OF LOS ANGELES

ROAD DEPARTMENT



1955

PALMDALE QUAD

BENCH MARKS

NGVD29 DATUM

PREFACE

The Road Department level net is composed of more than 1,000 miles of levels supporting in excess of 10,000 bench marks. In 1964-65, a major readjustment of the net was undertaken. To emphasize the complete break with previous elevations, the SY, SG & SL series bench marks have been re-labeled BY, BG & BL, respectively.

To facilitate the adjustment, indexing, and distribution of adjusted values of the net, the County territory was divided into 31 quads or areas. For identification purposes each quad was given a name, viz., "Rosemead," "La Mirada," "Santa Fe," etc. When bench marks and elevations in the Road Department net are used, the name of the quad in which the bench mark is located and the date of the adjustment of the elevation must be included in the bench mark description, e.g.,

BG 1887 --L+BN IN CONC HDWL OF DRAIN PIPE UNDER DR 218 FT
NE +18 FT SE C/L INT SAN JOSE HILLS RD +CAMERON AVE MKD (BM)
(COVINA --1965) ELEV. 696.238

It is expected that this general adjustment will, for the most part, remain sound for the next 8 to 12 years. As new circuits are completed, however, re-adjustment of individual quads may become advisable. It is expected that these subsequent adjustments will be in the nature of a few hundredths of a foot. When a quad is re-adjusted, new elevation lists will be published and the date of the re-adjustment will replace the "1965" at the end of the bench mark description. Two bench marks in the same quad with different adjustment dates will not normally join each other. Since all adjustments taper out to nothing at the periphery of the quad, any bench mark in one quad will join any bench mark in another quad regardless of their respective adjustment dates.

The basic accuracy of the net is reflected by an indicated field probable error of plus or minus 0.012 foot per mile of leveling as determined from 298 conditions of closure. However, many years experience in vertical control in the greater Los Angeles basin and Antelope Valley indicate that because of varying degrees of subsidence and heaving, the true datum is recovered only by obtaining substantial agreement of a number of bench marks.

The users of this net are invited to assist in its maintenance by notifying this Department of cases of obliteration, apparent mistakes in descriptions or elevations, and proven disturbance of bench marks.

DATUM: U. S. Coast and Geodetic Survey Sea Level Datum
of 1929, through the medium of the Los Angeles
County Engineer Precise Level Net, 1963 Adjust-
ment.

ABBREVIATIONS USED IN BENCH MARK LISTINGS

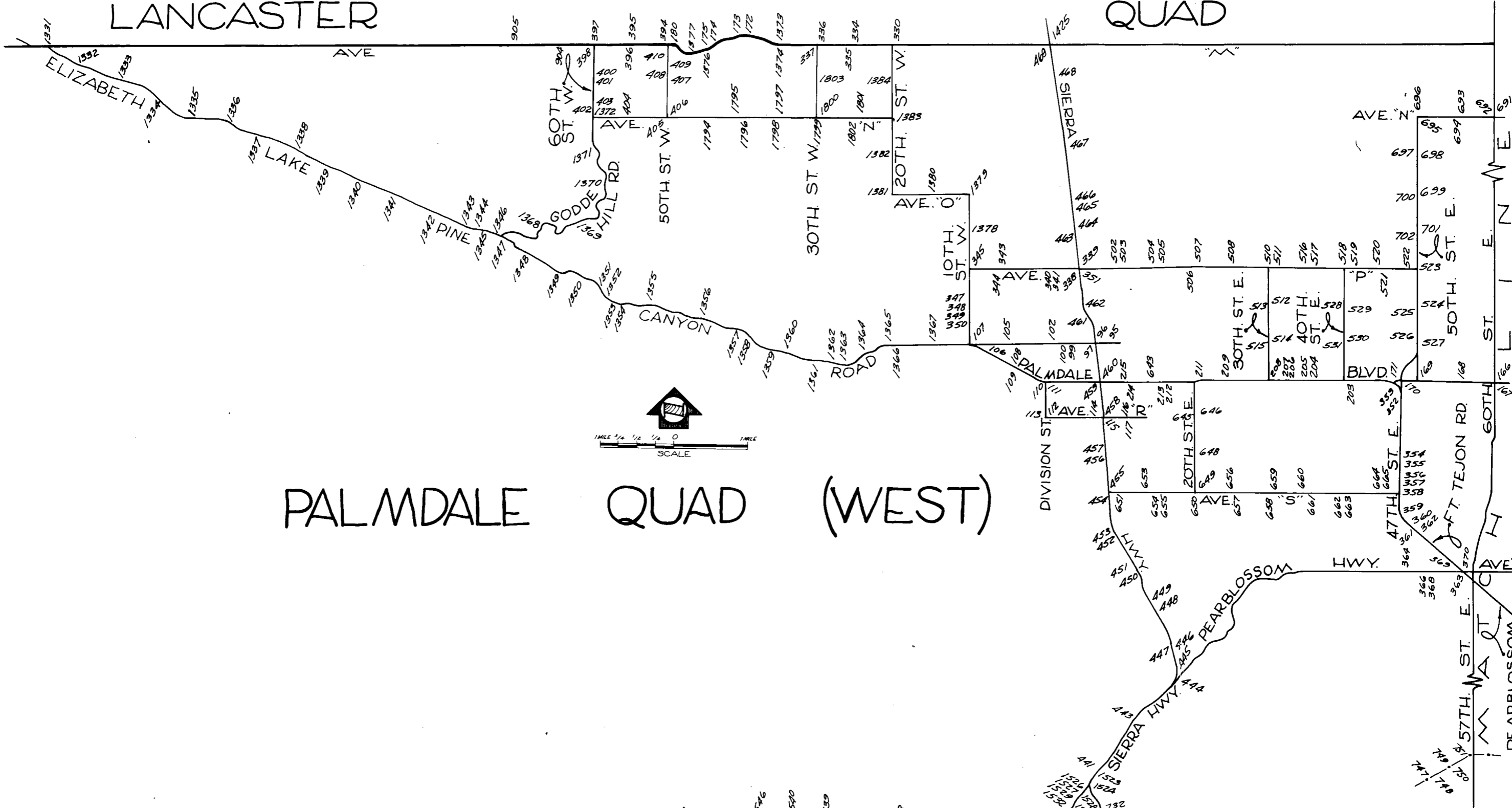
ABUT - - - - -	Abutment	EC - - - - -	End of Curve
ALG - - - - -	Along	ENT - - - - -	Entrance
ANG PT - - - - -	Angle Point	FL - - - - -	Floor
B/W - - - - -	Back of Walk	FTG - - - - -	Footing
BCR - - - - -	Beginning of Curb Return	F/W - - - - -	Front of Walk
BC - - - - -	Beginning of Curve	GAR - - - - -	Garage
BLDG - - - - -	Building	HDWL - - - - -	Headwall
BM - - - - -	Bench Mark	HSE - - - - -	House
BT SPK - - - - -	Boat or Bolt Spike	INT - - - - -	Intersection
BR CAP - - - - -	Brass or Bronze Cap	IP - - - - -	Iron Pipe
C B - - - - -	Catch Basin	LT - - - - -	Left
CTR - - - - -	Center	LACE - - - - -	L. A. City Engineer
C/L - - - - -	Center Line	LACS - - - - -	L. A. County Engineer
C/L INT - - - - -	Center Line Intersection	LAFC - - - - -	L. A. Co. Flood Control
C/L PROD - - - - -	Center Line Produced	L+BN - - - - -	Lead and Bench Nail
CONC - - - - -	Concrete	L+BR - - - - -	Lead and Brad
COR - - - - -	Corner	L+N - - - - -	Lead and Nail
COE - - - - -	Corps of Engineers	L+RDBM TAG - - - - -	Lead and Road Dept. Bench Mark Tag
CULV - - - - -	Culvert	L+SPK - - - - -	Lead and Spike
CB - - - - -	Curb	L+T - - - - -	Lead and Tack
CS MON - - - - -	County Engineer Monument	MCR - - - - -	Middle of Curb Return
CS BR CAP - - - - -	County Engineer Brass Cap	MKD - - - - -	Marked
CT SPK - - - - -	Cut Spike	MC - - - - -	Middle of Curve
DR - - - - -	Drive or Driveway	MON - - - - -	Monument
E/O - - - - -	East of	N/O - - - - -	North of
ECR - - - - -	End of Curb Return	NR - - - - -	Near

ABBREVIATIONS USED IN BENCH MARK LISTINGS . . . CONTINUED

OPP - - - - - Opposite
PI - - - - - Point of Intersection
PK+W - - - - - PK Nail and Washer
P/L - - - - - Property Line
POST - - - - - Point on Semi-Tangent
PP - - - - - Power Pole
PVMT - - - - - Pavement
PROD - - - - - Produced
RD - - - - - Road
RDEM - - - - - Road Dept. Bench Mark
RR - - - - - Railroad
RT - - - - - Right
R/W - - - - - Right of Way
SDMH - - - - - Storm Drain Manhole
SMH - - - - - Sewer Manhole
SPK - - - - - Spike
ST+W - - - - - Spike Tin and Washer
S/O - - - - - South of
TP - - - - - Telephone Pole
USC+GS - - - - - U. S. Coast and Geodetic Survey
USGS - - - - - U. S. Geological Survey
WK - - - - - Walk
W/O - - - - - West of

LANCASTER

QUAD

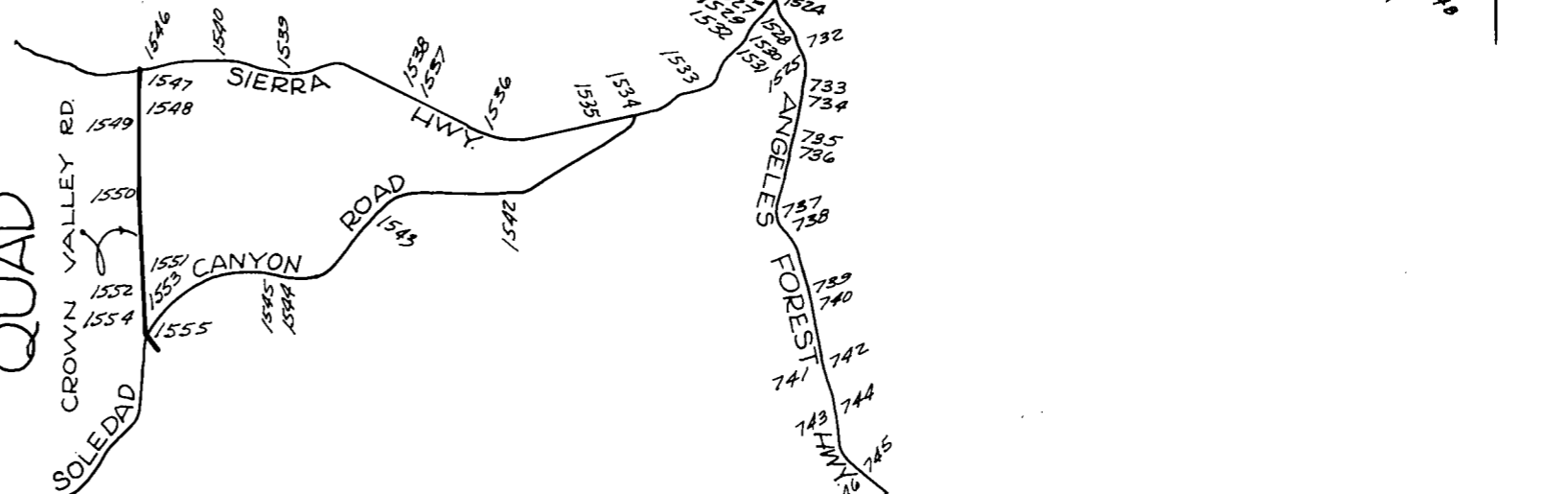


PALMDALE

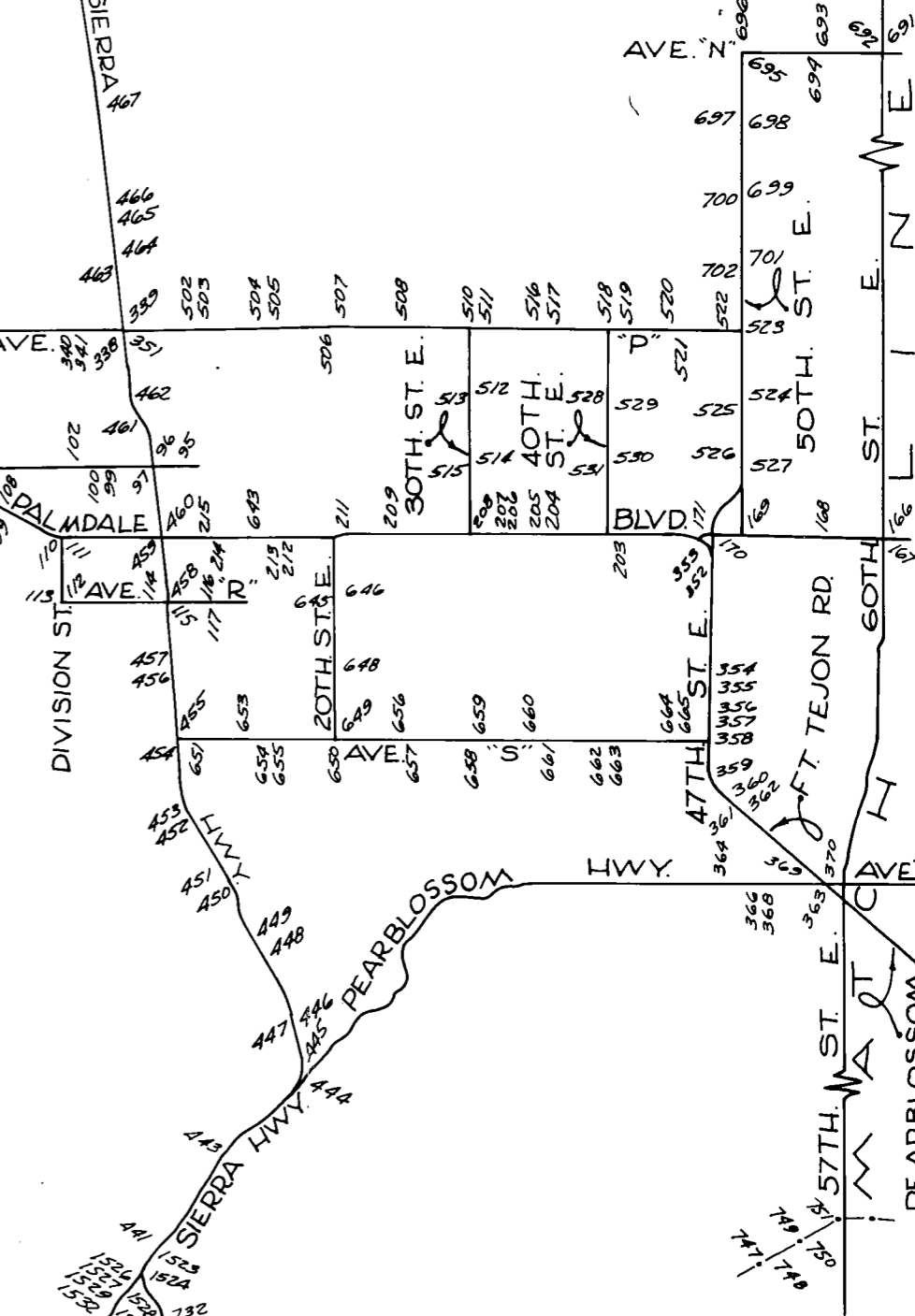
QUAD

(WEST)

NEWHALL QUAD



PALMDALE QUAD (EAST)

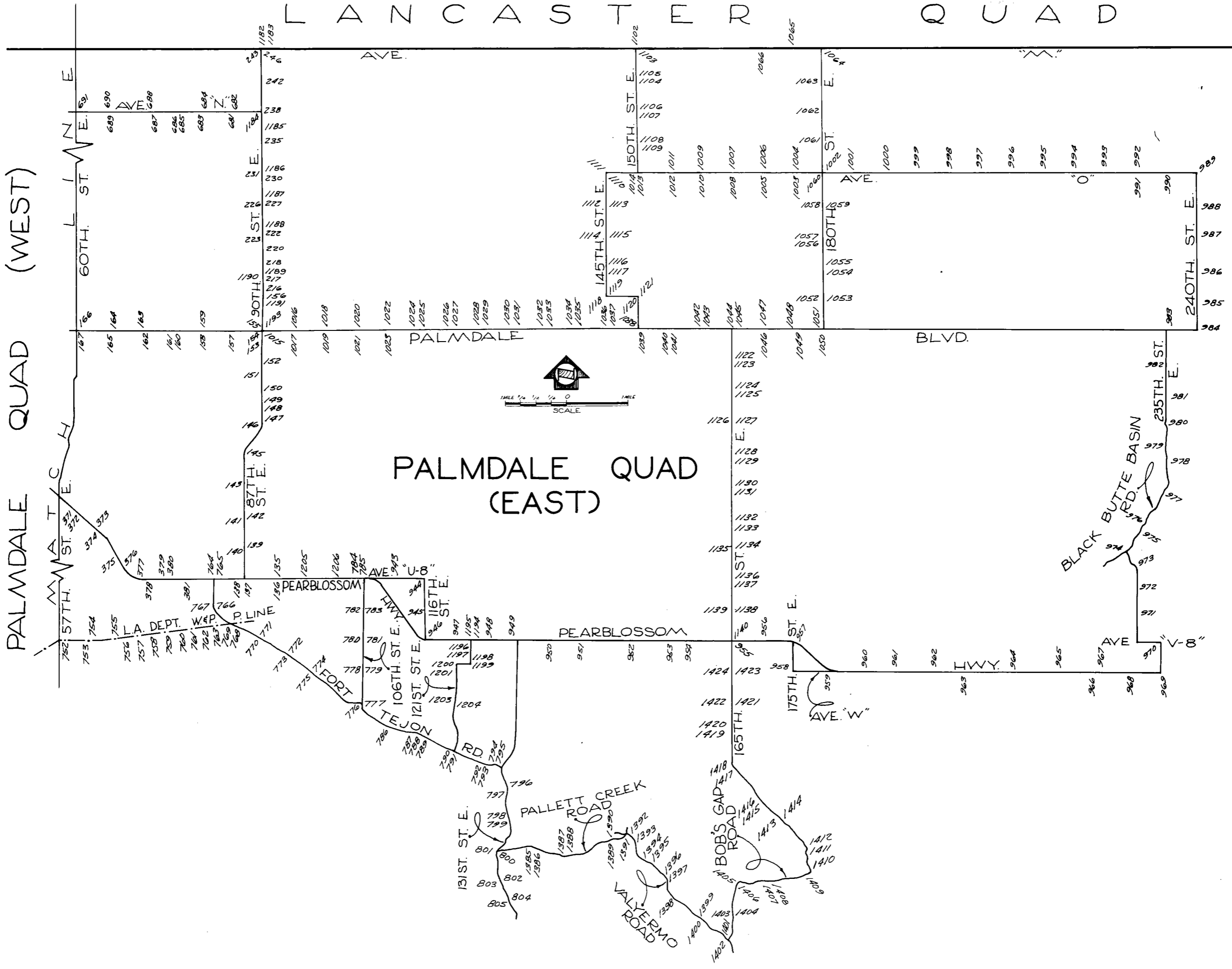


LANCASTER QUAD

PALMDALE QUAD (WEST)

PALMDALE QUAD (EAST)

ANGELES COUNTY
LOS ANGELES COUNTY
BERNARDINO COUNTY
SAN



QUAD-YEAR	ELEV	DESCRIPTION (INCLUDE QUAD AND YEAR IN DESCRIPTION)	BM NUMBER
PALMDALE (1955)	2632.871	L+BN 2.5FT N BCR @ NE COR RAMBLER AVE + AVE Q	SL 95
PALMDALE (1955)	2633.431	L+BN 11FT W BCR NW COR RAMBLER AVE + AVE Q	SL 96
PALMDALE (1955)	2640.539	USC+GS DISK IN TOP OF CONC POST 52.7FT SE SIGNAL NO 4132 124FT S C/L AVE Q + 32FT E C/L OF SPRR TRACKS MKD (H 426 1935)	SL 97
PALMDALE (1955)	2643.639	L+T 5FT E BCR @ SE COR AVE Q + SUMAC AVE	SL 99
PALMDALE (1955)	2644.366	L+T 5FT E BCR @ SE COR AVE Q + 3RD ST E	SL 100
PALMDALE (1955)	2639.964	L+BN 5FT W BCR @ NW COR AVE Q + CAROLSIDE AVE	SL 102
PALMDALE (1955)	2568.067	CS MON IN WELL CN C/L AVE Q 2670 FT W OF DIVISION ST	SL 105
PALMDALE (1955)	2682.858	USGS BR DISK IN CONC 1FT UP 45FT S C/L AVE Q + 85FT N C/L PALMDALE BLVD MKD (LS 66 1929)	SL 106
PALMDALE (1955)	2693.322	CS MON @ C/L INT 10TH ST W + AVE Q (W EDGE)	SL 107
PALMDALE (1955)	2662.512	CS MON ON C/L PALMDALE BLVD 0.6MI E OF 10TH ST W MKD (STA 30+30.44)	SL 108
PALMDALE (1955)	2682.954	SPK + W 7FT S C/L PALMDALE BLVD 0.65MI E OF 10TH ST W	SL 109
PALMDALE (1955)	2683.278	2IN IP FLUSH @ PI OF CURVE OF DIVISION ST 35FT S C/L PALMDALE BLVD (NE RIM)	SL 110
PALMDALE (1955)	2682.224	L+T 5 CB OF N SERVICE RD OF PALMDALE BLVD 70FT E C/L DIVISION ST + 45FT N C/L PALMDALE BLVD	SL 111
PALMDALE (1955)	2717.204	CS MON @ C/L INT AVE R + DIVISION ST	SL 112
PALMDALE (1955)	2720.100	CS MON 40FT W C/L DIVISION ST + 40FT N C/L PROD AVE R MKD (BM R-1)	SL 113
PALMDALE (1955)	2669.972	L+T 1FT E BCR @ NE COR AVE R + 6TH ST E	SL 114
PALMDALE (1955)	2666.693	CS MON @ C/L INT AVE R + SIERRA HWY PROD FROM THE N (E EDGE)	SL 115
PALMDALE (1955)	2652.235	CS MON 12IN DN @ C/L INT AVE R + 10TH ST E	SL 116
PALMDALE (1955)	2651.929	SPK + L 8FT E BCR @ SE COR 11TH ST E + AVE R	SL 117
PALMDALE (1955)	2935.801	STD DISK 4IN UP 32FT N C/L PEARBLOSSOM HWY + 0.5 MI E OF 87TH ST E 450FT E OF CULV NC 1-585+29 + 84FT E TP NO 543957H MKD (H 306 1935)	SL 135
PALMDALE (1955)	2932.183	RDBM TAG W END OF CONC HDWL OF CULV 15FT S C/L PEARBLOSSOM HWY + 0.5 MI E OF 87TH ST E 45FT E TP NO 543955H	SL 136
PALMDALE (1955)	2911.696	L+T IN CONC PORCH OF VILLA CAFE ON W SIDE OF BLDG NO 8640 PEARBLOSSOM HWY 65FT S C/L + 40FT W 87TH ST E 5FT S + 1FT W OF NW COR OF BLDG E	SL 138

QUAD-YEAR	ELEV	DESCRIPTION (INCLUDE QUAD AND YEAR IN DESCRIPTION)	BM NUMBER
PALMDALE (1955)	2857.082	CS MON IN WELL @ CR NR C/L INT U AVE + 87TH ST E MKD (SEC COR SEC 12,13,7,18)	SL 139
PALMDALE (1955)	2860.316	RDBM TAG ON N SIDE OF CONC FTG OF 2IN FENCE POST 135FT W C/L 87TH ST E + 25FT S C/L AVE U	SL 140
PALMDALE (1955)	2815.641	L+T @ SE COR CONC WLK @ SE COR HSE NO 8660 AVE T-8 + 55FT W C/L 87TH ST E 100FT S C/L	SL 141
PALMDALE (1955)	2814.090	CS MON 10IN DN @ C/L INT AVE T-8 + 87TH ST E MKD (1/4 SEC COR R10W R11W T5N SEC 7-12)	SL 142
PALMDALE (1955)	2776.427	CS MON CN C/L AVE T 10FT W C/L 87TH ST E MKD (SEC COR 1-6-12-7 R11W R5N R10W) (N EDGE)	SL 143
PALMDALE (1955)	2743.633	SPK IN WIER BDX @ NW COR 90TH ST E + AVE S-8 20FT N + 30FT W OF C/L INT	SL 145
PALMDALE (1955)	2711.975	CS MON @ C/L INT 90TH ST E + AVE S MKD (SEC 31 32 T6N R10W)	SL 146
PALMDALE (1955)	2712.990	L+T IN CTR OF ISL W SIDE OF UNION GAS STA @ NE COR AVE S + 90TH ST E 80FT N + 65FT E C/L INT	SL 147
PALMDALE (1955)	2699.013	RDBM TAG + N IN CTR OF CONC BASE OF TELEPHONE BOOTH @ NW COR BLDG NO 37356 90TH ST E 90FT E C/L + 95FT S C/L AVE R-12	SL 148
PALMDALE (1955)	2692.145	L+T @ NE COR OF CONC SLAB IN FRONT OF HSE NO 37454 90TH ST E 65FT E C/L + 55FT S C/L AVE R-10	SL 149
PALMDALE (1955)	2685.285	RDBM TAG + N @ SW COR OF CONC SLAB 25FT N C/L AVE R-8 + 45FT E C/L 90TH ST E	SL 150
PALMDALE (1955)	2671.217	L+T @ SE COR OF CONC SLAB @ SE COR OF CONC BLOCK BLDG NO 37855 90TH ST E 130FT W C/L + 500FT N AVE R-4	SL 151
PALMDALE (1955)	2662.946	CS MON 15IN DN @ C/L INT 90TH ST E + AVE R MKD (SEC COR 29,30,31,32 R10W T6N)	SL 152
PALMDALE (1955)	2655.348	L+T SE COR CONC SLAB IN FRONT OF DOOR ON S SIDE OF HSE NO 38161 90TH ST E 195FT W C/L + 75FT S C/L AVE Q-1C	SL 153
PALMDALE (1955)	265 ⁴⁵ .282	L+T IN N END OF GAS ISL TO SERVICE STA @ SW COR PALMDALE BLVD + 90TH ST E 74FT S + 63FT W C/L INT	SL 154A
PALMDALE (1955)	2645.323	L+T IN SE COR BLDG NO 8849 PALMDALE BLVD 62FT N C/L + 129FT W C/L 90TH ST E	SL 155
PALMDALE (1955)	2627.906	USC+GS MON IN CONC POST 40FT N + 30FT E C/L INT AVE Q + 90TH ST E MKD (LS 30 1929)	SL 156
PALMDALE (1955)	2645.309	RDBM MON IN WELL 6FT S C/L PALMDALE BLVD + 0.5 MI W 90TH ST E 33FT W TP NO 583344H	SL 157
PALMDALE (1955)	2642.406	CS MON 24IN DN CN C/L PALMDALE BLVD 1.0 MI W 90TH ST E MKD (1/4 COR SECS 25,30 R10W R11W T6N)	SL 158
PALMDALE (1955)	2644.995	RDBM TAG IN CONC + ROCK FTG OF IRON FENCE POST + 27FT N C/L PALMDALE BLVD + 1.0 MI W 90TH ST E	SL 159
PALMDALE (1955)	2641.164	L+T IN NE COR OF CONC SLAB @ E SIDE OF HSE 100FT E 75TH ST E + 115FT S C/L PALMDALE BLVD 1.5 MI W 90TH ST E	SL 160

QUAD-YEAR	ELEV	DESCRIPTION (INCLUDE QUAD AND YEAR IN DESCRIPTION)	BM NUMBER
PALMDALE (1955)	2639.961	RDBM MON IN WELL 8FT S + 100FT E OF C/L INT 75TH ST E + PALMDALE BLVD 1.5 MI W OF 90TH ST E	SL 161
PALMDALE (1955)	2640.565	L+T IN SE COR CONC PORCH TO HSE NO 7020 PALMDALE BLVD 175FT S C/L + 225FT E C/L 70TH ST E 2.0MI W OF 90TH ST E	SL 162
PALMDALE (1955)	2636.450	CS MON 24IN DN @ C/L INT PALMDALE BLVD + 70TH ST E (1/4 COR SECS 25, 26 R11W T6N)	SL 163
PALMDALE (1955)	2635.640	CS MON 2IN UP 50FT N C/L PALMDALE BLVD + 50FT E C/L 65TH ST E 2.5 MI W OF 90TH ST E (N EDGE)	SL 164
PALMDALE (1955)	2635.076	CS MON IN WELL @ C/L INT PALMDALE BLVD + 65TH ST E MKD (CTR SEC 26 R11W T6N RE 5869)	SL 165
PALMDALE (1955)	2628.944	CS MON 50FT N C/L PALMDALE BLVD + 50FT E C/L 60TH ST E MKD (RE 63) (E EDGE)	SL 166
PALMDALE (1955)	2627.345	CS MON 18IN DN CN C/L 60TH ST E ON C/L PROD OF PALMDALE BLVD FROM THE E MKD (1/4 COR SEC 26, 27 R11W T6N) (USE E EDGE)	SL 167
PALMDALE (1955)	2625.473	CS MON 40FT E C/L 55TH ST E + 50FT N C/L PALMDALE BLVD 3FT NW PP NO 971017E	SL 168
PALMDALE (1955)	2618.439	CS MON 3IN UP 25FT N C/L PALMDALE BLVD + 55FT E C/L 50TH ST E MKD (RE 63)	SL 169
PALMDALE (1955)	2616.041	USGS MON 57FT S C/L PALMDALE BLVD + 58FT E C/L 47TH ST E MKD (LS 25 1929)	SL 170
PALMDALE (1955)	2614.834	USC+GS MON UP 4IN 232FT W C/L 47TH ST E + 45FT N C/L PALMDALE BLVD MKD (E-306 1955)	SL 171
BASELINE (1955)	2493.837	USC+GS DISK IN CONC POST 92FT N + 65FT W C/L INT AVE M + 40TH ST W MKD (F 489 1955)	SL 172A
BASELINE (1955)	2470.198	USC+GS DISK IN CONC POST 106FT W C/L 40TH ST W + 0.1 MI N AVE M 150FT S OF E-W RUNWAY QUARTZ HILL AIRPORT MKD (G 489 1955)	SL 173A
BASELINE (1955)	2453.145	USC+GS DISK IN CONC POST @ QUARTZ HILL AIRPORT WIND INDICATOR 90FT S OF E-W RUNWAY MKD (H 489 1955)	SL 174A
BASELINE (1955)	2452.575	USC+GS DISK IN CONC GASLINE STAND 150FT E OF SE COR OF HANGAR @ QUARTZ HILL AIRPORT MKD (J 489 1955)	SL 175A
BASELINE (1955)	2495.032	L+T CONC SLAB SW COR PORCH TO HSE NO 42002 50TH ST W 48FT N + 66FT E C/L INT 50TH ST W + AVE M	SL 180A
PALMDALE (1955)	2605.848	RD MON IN WELL FLUSH IN CTR OF E MAC LANE OF 40TH ST E 161FT S + 7FT E OF C/L INT PALMDALE BLVD + 40TH ST E MKD (LA CO RD 1959)	SL 203A
PALMDALE (1955)	2595.155	L+BN E CB 35TH ST E 175FT N C/L PALMDALE BLVD	SL 204
PALMDALE (1955)	2595.465	RDBM TAG W CB 35TH ST E 155FT N C/L PALMDALE BLVD	SL 205
PALMDALE (1955)	2600.589	RDBM TAG N CB OF SERVICE RD TO PALMDALE BLVD @ NW COR PALMDALE BLVD + 32ND ST E 1.5FT W OF BCR	SL 206
PALMDALE (1955)	2597.474	L+BRAD 2FT W OF BCR @ NW COR AVE Q-7 + FRONTIER AVE 30FT N + 50FT W C/L INT	SL 207

QUAD-YEAR	ELEV	DESCRIPTION (INCLUDE QUAD AND YEAR IN DESCRIPTION)	BM NUMBER
PALMDALE (1955)	2599.511	L+BRAD 4FT E BCR @ NE COR AVE Q-7 + 30TH ST E 80FT E + 30FT N C/L INT	SL 208
PALMDALE (1955)	2605.093	L+T @ NE COR CONC PORCH HSE NO 2521 PALMDALE AVE 90FT N C/L PALMDALE AVE + 0.5 MI E OF 20TH ST E	SL 209
PALMDALE (1955)	2611.286	L+T 3FT E OF W EDGE OF S CONC ISL STANDARD GAS STATION NE COR PALMDALE BLVD + 20TH ST E	SL 211B
PALMDALE (1955)	2620.838	L+BN 1FT E BCR S CB SERVICE RD SE COR PALMDALE BLVD + 16TH ST E	SL 212A
PALMDALE (1955)	2626.418	L+BN IN MCR @ SW COR 15TH ST E + PALMDALE BLVD	SL 213A
PALMDALE (1955)	2635.235	L+T IN 4FT CONC WLK TO BLDG NO 1154 PALMDALE BLVD 61FT W + 50FT S OF C/L INT PALMDALE BLVD + 12TH ST E	SL 214A
PALMDALE (1955)	2643.270	CS MON 11IN DN ON C/L 10TH ST E + 142FT N OF C/L INT PALMDALE BLVD + 10TH ST E MKD (1/4 SEC COR 26, 25, T6N R12W 1928) (USE N EDGE)	SL 215
PALMDALE (1955)	2624.324	L+BN W SIDE CONC FTG FOR SURGE + BREATHER PIPE 850FT N AVE Q + 60FT E C/L OF 90TH ST E 90FT NE OF PP NO 373194E	SL 216A
PALMDALE (1955)	2616.889	L+BN W SIDE STAND PIPE AROUND SURGE + BREATHER PIPE 0.4 MI N AVE Q + 60FT E C/L 90TH ST E OPP PP NO 373189E	SL 217
PALMDALE (1955)	2613.142	L+BN NW COR CONC SLAB FRONT OF PUMP HSE 0.55 MI N AVE Q + 45FT E C/L 90TH ST E 33FT N OF TRANSF POLES NO 878724E + NO 878724E	SL 218
PALMDALE (1955)	2610.005	L+T W EDGE STAND PIPE AROUND SURGE + BREATHER PIPE 0.8 MI N AVE Q 60FT E C/L 90TH ST E 25FT S + 85FT E PP NO 373180E	SL 220A
PALMDALE (1955)	2603.463	L+BN NR SW COR OLD CONC FTG 50FT E + 35FT N C/L INT AVE P + 90TH ST E	SL 222A
PALMDALE (1955)	2605.305	L+T NR N END CONC WLK TO HSE NO 39541 90TH ST E 300FT S + 145FT W OF C/L INT AVE P + 90TH ST E	SL 223
PALMDALE (1955)	2588.806	CS MON 18 IN DN @ AVE O-8 + 90TH ST E MKD (T6N R10W SEC 18, 17 1/4 COR) USE NE EDGE	SL 226
PALMDALE (1955)	2588.949	L+BN SE COR CONC FTG OF SMALL TANK 15FT S OF ELEC PUMP 300FT N OF AVE O-8 P 60FT E OF C/L 90TH ST E	SL 227
PALMDALE (1955)	2575.748	RDBM TAG CONC FTG OF 8FT CHAIN LINK FENCE AROUND EDISON SUB STA 30FT S + 30FT E C/L INT OF 90TH ST E + AVE C	SL 230A
PALMDALE (1955)	2575.950	RR SPK IN BASE OF PP 200FT NW OF SO CAL EDISON TRANSFORMER STA WHERE BRANCH POWER LINES TAKE OFF TO THE E NR INT 90TH ST E + AVE D MKD (USBM 2576)	SL 231A
PALMDALE (1955)	2560.107	CS MON C/L INT 90TH ST E + PROP AVE N-8 MKD (1/4 COR SEC 7, 8 T6N R10W)	SL 235A
PALMDALE (1955)	2551.530	CS MON 18IN DN @ C/L INT 90TH ST E + AVE N MKD (T6N R10W SEC COR 5, 6, 7, 8) USE NW COR	SL 238A

QUAD-YEAR	ELEV	DESCRIPTION (INCLUDE QUAD AND YEAR IN DESCRIPTION)	BM NUMBER
PALMDALE (1955)	2535.201	CS MON @ C/L INT AVE M-8 + 90TH ST E 2640FT N C/L AVE N MKD (T6N R10W 1/4 SEC COR 5,6)	SL 242
PALMDALE (1955)	2536.307	2IN IP 1FT UP 40FT N OF AVE M-8 + 40FT W C/L 90TH ST E (USE W EDGE)	SL 243
BASELINE (1955)	2523.621	CS MON @ C/L INT OF AVE M + 90TH ST E T6N T7N R10W SEC COR 31,32-5(6 1925 USE N EDGE)	SL 246A
BASELINE (1955)	2522.971	USC+GS BRASS DISK IN TOP OF CONC POST 4IN UP 208FT E OF C/L 20TH ST W + 33FT N C/L AVE M 5FT W OF PP NO 1054573-E MKD (D489 155)	SL 330A
BASELINE (1955)	2517.972	CS BR CAP MON @ C/L INT 25TH ST W + AVE M MKD (1/4 SEC CCR 32-5 T6N R12W) USE W EDGE	SL 334A
BASELINE (1955)	2523.106	L+T IN SE COR OF CONC DR TO HSE NO 2524 AVE M 140FT S C/L + 215FT W C/L 25TH ST W	SL 335A
BASELINE (1955)	2519.926	BR DISK IN TOP OF CONC POST 4IN UP 300FT E C/L 30TH ST W + 34FT N C/L AVE M 6FT W PP NO 105459E	SL 336A
BASELINE (1955)	2514.635	CS BR CAP MON @ C/L INT AVE M + 30TH ST W MKD (SEC CCR 31-32, 5-6 T7N R12W)	SL 337A
PALMDALE (1955)	2616.113	USC+GS MON @ SE COR AVE P + SIERRA HWY 375FT S C/L + 39FT W OF W RAIL CF SPRR	SL 338
PALMDALE (1955)	2613.451	USC+GS MON @ NE COR AVE P + SIERRA HWY 225FT N C/L + 39FT W OF W RAIL SPRR	SL 339
PALMDALE (1955)	2635.261	L+T W EDGE OF CONC PORCH OF HSE FACING PICTORIAL ST ON N/S OF ST 150FT S AVE P + 450FT E DIVISION ST PROPOSED	SL 340
PALMDALE (1955)	2634.266	L+BN 1.5FT W OF BCR @ SW COR OF CAROLSIDE AVE + PICTORIAL ST 210FT S + 450FT E OF DIVISION ST PROPOSED + AVE P	SL 341
PALMDALE (1955)	2658.748	RD BR CAP MON IN WELL 12IN DN 130FT N C/L AVE P + 0.6 MI W OF DIVISION ST 5FT S O PP NO 3353	SL 343
PALMDALE (1955)	2663.549	SPK + T IN TP NC 3355 J2A42 71FT S C/L AVE P 5/8 MILE W OF DIVISION ST PROP	SL 344
PALMDALE (1955)	2666.892	CS MON IN WELL 20IN DN @ INT OF AVE P + 10TH ST W	SL 345
PALMDALE (1955)	2686.721	RDBM TAG IN N CB BEACHDALE DR 18FT N C/L + 130FT W OF C/L OF 10TH ST W	SL 347
PALMDALE (1955)	2686.673	RDBM TAG 1FT W OF BCR @ SW COR OF BEACHDALE DR + 10TH ST W 18FT S + 72FT W OF C/L INT	SL 348
PALMDALE (1955)	2695.983	LRGE SPK IN PP NO 759354E W SIDE OF 10TH ST W SW COR OF YUCCA TREE + 10TH ST W	SL 349
PALMDALE (1955)	2695.029	L+T IN CONC CLEANOUT BX TO 30IN CIP IN FRONT OF HSE NO 39011 10TH ST W 252FT S OF C/L INT OF YUCCA TREE ST + 10TH ST W	SL 350
PALMDALE (1955)	2615.255	USC+GS BR CAP MON IN CONC 1.4 MI N ALONG SPRY FROM STA @ PALMDALE 63FT E OF THE C/L CAL HWY 14 57FT N OF TP 45FT NE OF A LONE TREE @ EDGE OF HWY 31FT W OF W RAIL	SL 351
PALMDALE (1955)	2635.283	RDBM TAG IN CONC FTG FOR CONC FOUNDATION @ NW COR OF AVE R + 47TH ST E 30FT N + 64FT W C/L INT	SL 352

QUAD-YEAR	ELEV	DESCRIPTION (INCLUDE QUAD AND YEAR IN DESCRIPTION)	BM NUMBER
PALMDALE (1955)	2635.276	L+BN IN E END OF CONC SLAB @ GATE ENTRANCE ON N SIDE OF AVE R 30FT N C/L + 225FT W C/L OF 47TH ST E	SL 353
PALMDALE (1955)	2658.534	SPK + T ON N SIDE OF PP NO 646007E NR PROP C/L OF AVE R-8 1 MI S OF PALMDALE BLVD + 75FT E C/L 47TH ST E	SL 354
PALMDALE (1955)	2658.387	L+T IN END OF LOWER CONC STEP TO HSE NR C/L INT OF AVE R-8 PROP + 47TH ST E 1 MI S OF PALMDALE BLVD + 75FT E C/L 47TH ST E	SL 355
PALMDALE (1955)	2669.301	L+T NR N EDGE CONC DRWY TO GARAGE 99FT E C/L 47TH ST E + 160FT N C/L AVE R-12 14FT E OF CB (SERVICE RD)	SL 356
PALMDALE (1955)	2669.586	RDBM TAG 1FT S OF BCR 40FT E C/L 47TH ST E + 56FT S C/L AVE R-12	SL 357
PALMDALE (1955)	2676.006	L+T N END OF CONC SLAB IN FRONT OF BLDG NO 37215 47TH ST E (STATE HWY NO 138) 110FT W C/L STATE HWY + 210FT N C/L OF AVE S	SL 358
PALMDALE (1955)	2692.540	L+T N END OF 1ST STEP OF HSE NO 37024 47TH ST E (STATE HWY NO 138) 0.3 MI S OF AVE S + 275FT S OF BC CURVE TO THE E 100FT E OF C/L 47TH ST E	SL 359
PALMDALE (1955)	2694.289	L+T IN S EDGE OF CONC APRON OF BARN 150FT S OF HSE NO 37024 47TH ST E (STATE HWY 138) 0.3 MI S OF AVE S 425FT S OF BC OF CURVE TO THE E + 105FT E C/L 47TH ST E	SL 360
PALMDALE (1955)	2699.626	L+T NE COR OF CONC SLAB OVER CISTERN 55FT W C/L 47TH ST E 75FT S OF HSE NO 36847 47TH ST E 300FT N AVE S-8	SL 361
PALMDALE (1955)	2702.973	S+T S SIDE TP NO 527120-H 20FT E C/L 47TH ST E + 45FT N C/L AVE S-8 TO THE E	SL 362
PALMDALE (1955)	2764.875	L+T IN HDWL 43FT S + 43FT W C/L INT 47TH ST E + PEARBLOSSOM HWY	SL 363A
PALMDALE (1955)	2755.957	L+T W END OF 1ST CONC STEP OF PORCH OF HSE NO 4723 PEARBLOSSOM HWY 25CFT E OF 47TH ST E + 175FT N C/L PEARBLOSSOM HWY	SL 364
PALMDALE (1955)	2760.196	L+T S END OF 1ST CONC STEP TO PORCH OF HSE NO 5004 PEARBLOSSOM HWY 50FT E C/L 50TH ST E + 90FT S C/L PEARBLOSSOM HWY	SL 366
PALMDALE (1955)	2753.630	L+T N END OF 1ST CONC STEP TO PORCH OF HSE NO 5160 PEARBLOSSOM HWY 50FT S C/L PEARBLOSSOM HWY 45FT W C/L 52ND ST E PRCD	SL 368
PALMDALE (1955)	2754.011	L+T 3FT E OF W END OF GAS STA ISLAND 1FT N OF S EDGE OF ISL 60FT N C/L OF PEARBLOSSOM HWY 250FT W OF C/L INT STATE HWY 138 + PEARBLOSSOM HWY	SL 369
PALMDALE (1955)	2756.913	L+T NR CTR OF GAS STA ISL 90FT S C/L PEARBLOSSOM HWY 90FT SW OF C/L OF STATE HWY NO 138 (TEXACO STA)	SL 370
PALMDALE (1955)	2774.449	L+T NR SLY END OF CONC SLAB TO BLDG NO 5810 PEARBLOSSOM HWY (STATE HWY 138) 0.5 MI S OF AVE T + 80FT W OF C/L PEARBLOSSOM HWY	SL 371
PALMDALE (1955)	2775.706	L+T NR CTR ON CONC SLAB TO BLDG NO 5828 PEARBLOSSOM HWY 0.5 MI S OF AVE T + 80FT W OF C/L PEARBLOSSOM HWY	SL 372

QUAD-YEAR	ELEV	D E S C R I P T I O N (INCLUDE QUAD AND YEAR IN DESCRIPTION)	BM	NUMBER
PALMDALE (1955)	2811.801	RD BR CAP MON IN WELL ON E SIDE OF STATE HWY NO 138 45FT E OF C/L + 4MI S OF PALMDALE BLVD 5FT S OF TP NO 647301H + 400FT N OF BLDG NO 6630 PEARBLOSSOM HWY	SL	373
PALMDALE (1955)	2817.158	L+T IN THE SW COR OF CONC SLAB TO BLDG NO 6630 PEARBLOSSOM HWY (STATE HWY 138) 345FT N OF CURVE TO NW 4 MI S OF PALMDALE BLVD 60FT W OF C/L HWY 138	SL	374
PALMDALE (1955)	2860.102	S+T W SIDE PP NC 531280-E 21FT S OF C/L OF PEARBLOSSOM HWY 300FT W OF CURVE TO THE E ENTERING TOWN OF LITTLE ROCK	SL	375
PALMDALE (1955)	2860.523	RD BR CAP MON 46FT E C/L PEARBLOSSOM HWY 5FT S OF TP NO 647299-H 75FT N OF BC OF CURVE TO EAST ENTERING TOWN OF LITTLE ROCK	SL	376
PALMDALE (1955)	2885.616	RDBM TAG N END OF W ABUT OF BRIDGE NO 53-303 OVER LITTLE ROCK CREEK 15FT N OF C/L OF PEARBLOSSOM HWY + FIRST BRIDGE W OF LITTLE ROCK	SL	377
PALMDALE (1955)	2885.999	RDBM TAG S END OF E ABUT OF BRIDGE NO 53-303 OVER LITTLE ROCK CREEK 15FT S OF C/L PEARBLOSSOM HWY + FIRST BRIDGE W OF LITTLE ROCK	SL	378
PALMDALE (1955)	2893.425	L+T @ SE COR CONC WK IN FRONT OF BLDG NO 7259 PEARBLOSSOM HWY 60FT N C/L 0.3 MI E OF BRIDGE NO 53-303 OVER LITTLE ROCK CREEK	SL	379
PALMDALE (1955)	2896.241	L+T @ SW COR CONC WK IN FRONT OF BLDG NO 7313 PEARBLOSSOM HWY 60FT N C/L + 0.4 MI E OF BRIDGE NO 53-303 OVER LITTLE ROCK CREEK	SL	380
PALMDALE (1955)	2910.178	USC+GS BR CAP MON @ SE COR PEARBLOSSOM HWY + 77TH ST E 30FT E + 27FT S C/L INT MKD (USGS 2910)	SL	381
BASELINE (1955)	2491.041	CS MON IN WELL 14IN DN @ C/L INT AVE M + 50TH ST W (USE N EDGE)	SL	394
BASELINE (1955)	2496.373	CS MON IN WELL 15IN DN @ C/L INT OF AVE M + 55TH ST W MKD (1/4 COR SEC 35, 2 R-13W T-7N T-6N) USE S EDGE	SL	395
BASELINE (1955)	2500.603	L+T IN CONC WLK TO HSE SW COR AVE M + 55TH ST W 57FT S + 34FT W C/L INT	SL	396
BASELINE (1955)	2513.654	CS MON IN WELL 22IN DN @ C/L INT OF AVE M + 60TH ST W	SL	397
PALMDALE (1955)	2522.886	L+T IN CONC PORCH TO HSE ON 60TH ST W 175FT E + 266FT S C/L INT AVE M + 60TH ST W	SL	398
PALMDALE (1955)	2603.469	RDBM TAG ON E SIDE OF CONC COLLAR AROUND 36IN STAND PIPE 240FT N C/L AVE M-8 + 36FT E C/L 60TH ST W	SL	400
PALMDALE (1955)	2613.757	CS MON IN WELL 12IN DN @ C/L INT 60TH ST W + AVE M-8 MKD (1/4 COR SEC 2 SEC 3 T6N R13W)	SL	401
PALMDALE (1955)	2723.967	RDBM TAG IN SE COR OF CONC FOUNDATION OF PUMP HSE 51FT E C/L 60TH ST W + 260FT N C/L OF AVE N	SL	402
PALMDALE (1955)	2730.576	RD MON IN CONC IN WELL W/COVER @ NE COR OF AVE N + 60TH ST W 90FT N + 13FT E OF C/L INT	SL	403
PALMDALE (1955)	2686.182	RD MON IN WELL W/COVER @ NW COR OF AVE N + 55TH ST W 8FT N + 101FT W OF C/L INT	SL	404

QUAD-YEAR	ELEV	DESCRIPTION (INCLUDE QUAD AND YEAR IN DESCRIPTION)	BM NUMBER
PALMDALE (1955)	2637.609	CS MON IN WELL 24IN DN @ C/L INT OF AVE N + 50TH ST W (USE NE EDGE)	SL 405
PALMDALE (1955)	2639.999	USGS MON 4IN UP 30FT N C/L AVE N + 45FT E C/L 50TH ST W	SL 406
PALMDALE (1955)	2556.208	CS MON IN WELL 10IN DN @ C/L INT OF 50TH ST W + AVE M-8 (USE NW EDGE)	SL 407
PALMDALE (1955)	2555.657	RDBM TAG IN CONC SLAB IN FRONT OF STORE @ NW COR OF 50TH ST W + AVE M-8 45FT N + 40FT W C/L INT	SL 408
PALMDALE (1955)	2515.696	RDBM TAG S CB TO SCHOOL 5FT NE OF END OF CB 50FT N + 43FT E OF C/L INT OF 50TH ST W + AVE M-4	SL 409
PALMDALE (1955)	2505.305	L+T IN MC IN E CB OF DRWY TO QUARTZ HILL SCHOOL 100FT E + 593FT N C/L INT 50TH ST W + AVE M-4	SL 410
PALMDALE (1955)	3226.333	USC+GS BR CAP IN 6IN SQ CONC POST FLUSH LOC 720 FT NELY ALG SIERRA HWY FROM OLD INT ANGELES FOR- EST HWY @ VINCENT + 35FT NWLY FROM C/L MKD (S- 431 1935)	SL 441
PALMDALE (1955)	3133.446	BR DISK IN CONC 2IN UP 1.0 MI N ANGELES FOREST HWY 30FT W OF W EDGE N CONC HDWL OF CULVERT NO E701+90 35FT NW OF C/L HWY 14 MKD (K431 1935)	SL 443
PALMDALE (1955)	2973.157	BR DISK IN CONC 12IN UP 43FT SE CTR ONE-WAY ROAD OFF-RAMP HWY 14 TO PEARBLOSSOM HWY + 80FT E OF E EDGE S HDWL OF CULVERT NO E43+60 UNDER ONE-WAY ROAD MKD (LCFT 1938)	SL 444
PALMDALE (1955)	2967.912	BR DISK IN CONC 2IN UP IN TRIANGLE FORMED BY PEARBLOSSOM HWY + HWY14 32FT N OF CTR ONE-WAY ROAD OFFRAMP HWY14 TO PEARBLOSSOM HWY + 155FT W OF INT PAVT @ E END OF TRIANGLE 4FT E OF PP NO NUM MKD (U899 1955)	SL 445
PALMDALE (1955)	2911.002	BR DISK IN CONC FLUSH 130FT SE OF S EDGE OF E CONC HDWL FOR CULVERT NO E768+00 85FT E OF C/L HWY 14+ 0.25 MI N OF PEARBLOSSOM HWY CUTOFF MKD (M811 RESET 1955)	SL 446
PALMDALE (1955)	2907.845	BR DISK IN CONC 2IN UP 120FT N OF N EDGE E CONC HDWL FOR CULVERT NO E768+00 + 27FT E OF HWY 14 0.25 MI N OF PEARBLOSSOM HWY MKD (R430 1935)	SL 447
PALMDALE (1955)	2867.338	BR DISK IN CONC 3IN UP 71FT N OF N EDGE OF E HDWL FOR CULVERT NO 796-30 45FT E OF C/L HWY 14 + 95FT NE OF PP NO 618780H 0.35 MI S OF ALPINE SPRINGS RR XING MKD (E430 1935)	SL 448
PALMDALE (1955)	2862.589	BR DISK IN CONC 3IN UP 55FT SE OF C/L DIRT ROAD TO HSE NO 36065 N SIERRA HWY ALONG C/L PROD + 42FT E OF C/L HWY14 0.5 MI S OF AVE T + 0.25 MI S OF SPRR XING MKD (C430 1935)	SL 449
PALMDALE (1955)	2826.525	BR DISK IN CONC 4IN UP 39FT W OF C/L SPRR MAIN TRACKS + 165FT S OF COURSON RD (AVE T) MKD (P429 1935)	SL 450
PALMDALE (1955)	2831.393	BR DISK IN CONC 3IN UP 43 FT W OF C/L SPRR MAIN TRACKS + 125FT N OF COURSON RD (AVE T) MKD (M429 1935)	SL 451
PALMDALE (1955)	2800.689	BR DISK IN CONC 3IN UP 81FT NE OF C/L SPRR TRACKS 89FT SW OF C/L HWY 14+ 150 W OF EXIT TO LAKE ARESH-LAMAR (SMALL LAKE 0.5 MI S OF AVE S) MKD (U428 1935)	SL 452

QUAD-YEAR	ELEV	DESCRIPTION (INCLUDE QUAD AND YEAR IN DESCRIPTION)	BM NUMBER
PALMDALE (1955)	2802.615	BR DISK IN CONC HDWL FOR CULVERT UNDER SPRR TRACKS 10IN S OF N EDGE OF WL 21FT E OF C/L RR TRACKS 70FT W OF PALM IRRIG DIST DRAIN PUMP + 180FT W OF LAKE ARESH-LAMAR (SMALL LAKE 0.5 MI S OF AVE S) MKD (T487 1955)	SL 453
PALMDALE (1955)	2756.494	BR DISK IN CONC 6IN DN 88FT E OF SPRR MAINLINE + 31FT S OF AVE S 19FT W OF PP NO 515652H MKD (Z427 1935)	SL 454
PALMDALE (1955)	2753.054	BR DISK IN CONC FLUSH 90FT E OF C/L SPRR MAINLINE + 125FT N OF AVE S UNDER RR TELEGRAPH LINE MKD (Y427 1935)	SL 455
PALMDALE (1955)	2710.586	BR DISK IN CONC 3IN UP 43FT E + 80FT S OF RR SPK+T WITH PUNCH MARK @ C/L INT SPRR MAINLINE + AVE R8 29FT W OF C/L HWY 14 MKD (H 427 1935)	SL 456
PALMDALE (1955)	2705.059	BR DISK IN CONC 4IN UP 43FT E + 170FT N OF RR SPK+T WITH PUNCH MARK @ C/L INT SPRR MAINLINE + C/L AVE R8 27FT W OF C/L HWY 14 MKD (F811 1947)	SL 457
PALMDALE (1955)	2669.178	BR DISK IN TOP CONC POST 2IN UP 38FT E OF C/L SPRR MAINLINE + 96FT N OF C/L AVE R MKD (W426 1935)	SL 458
PALMDALE (1955)	2658.638	BR DISK IN CONC 3IN DN 100FT N + 25FT W OF NW COR OF PALMDALE SPRR STATION 10FT E OF C/L MAIN TRACK ACCESSIBLE FROM 8IN DIA HOLE FILLED WITH ROCK MKD (R811 1947)	SL 459
PALMDALE (1955)	2656.856	BR DISK IN CONC FLUSH 185FT N OF PALMDALE BLVD + 26FT E /F C/L SPRR MAINLINE MKD (X811 1947)	SL 460
PALMDALE (1955)	2622.120	BR DISK IN CONC FLUSH 76FT S OF HWY 14 RR XING 65FT E OF C/L 6TH ST E 40TH W OF C/L SPRR MAINLINE 0.4 MI N OF AVE Q MKD (C426 1935)	SL 461
PALMDALE (1955)	2617.366	BR DISK IN CONC FLUSH 115FT S + 44FT W OF SPK T+W @ C/L INT AVE P8 PROPOSED + SPRR MAIN TRACK 0.1 MI N OF HWY 14 RR XING MKD (B426 1935)	SL 462
PALMDALE (1955)	2607.909	BR DISK IN CONC 4IN UP 39FT W OF C/L SPRR TRACKS 67FT E OF C/L HWY 14+ 420FT S OF TP LINE LOCATED 0.5 MI N OF AVE P MKD (U425 1935)	SL 463
PALMDALE (1955)	2609.159	BR DISK IN CONC 4IN UP 64FT E OF HWY 14 40FT W/O C/L SPRR TRACKS + 435FT N OF TP LINE LOCATED 0.5 MI N OF AVE P MKD (T425 1935)	SL 464
PALMDALE (1955)	2604.584	BR DISK IN CONC 4IN UP 40FT W OF C/L SPRR TRACKS + 66FT E OF HWY 14 4000FT N OF AVE P MKD (S425 1935)	SL 465
PALMDALE (1955)	2606.068	BR TRI DISK IN CONC 6IN UP 62FT E OF C/L HWY 14 39FT W OF C/L SPRR TRACKS + 4250FT N OF AVE P MKD (SAHARA 1938)	SL 466
PALMDALE (1955)	2576.750	BR DISK IN CONC 2IN UP 59FT E OF C/L HWY 14 46FT W OF SPRR TRACKS 2000FT S OF AVE N 4FT N OF NEXT TO LAST POLE ON W SIDE OF TRACKS MKD (W811 1947)	SL 467
PALMDALE (1955)	2543.254	BR DISK IN CONC FLUSH 47FT W OF C/L SPRR TRACKS 83FT E OF HWY 14 2100FT S AVE M MKD (V811 1947)	SL 468
BASELINE (1955)	2527.868	BR DISK IN CONC 6IN UP 35FT S OF AVE M 87FT W OF CTR W TRAFFIC LANES HWY 14 3FT S OF PP NO 1055176E MKD (FF487 1955)	SL 469

QUAD-YEAR	ELEV	D E S C R I P T I O N (INCLUDE QUAD AND YEAR IN DESCRIPTION)	BM NUMBER
PALMDALE (1955)	2590.922	CS MON IN WELL 10IN DN @ C/L INT 10TH ST E + AVE P MKD (SEC COR 13-14-23-24 R12W T6N) USE NE EDGE	SL 502
PALMDALE (1955)	2592.313	RD MON IN WELL 10IN DN @ NE COR AVE P + 10TH ST E 200FT E + 30FT N C/L INT + 10FT E OF PP NO 1055339E	SL 503
PALMDALE (1955)	2580.844	CS MON IN WELL 6IN DN @ C/L INT 15TH ST E + AVE P MKD (1/4 COR 13-24 R12W T6N) USE SW EDGE	SL 504
PALMDALE (1955)	2580.165	RD MON IN WELL 6IN DN @ NE COR AVE P + 15TH ST W 200FT E + 30FT N C/L INT + 10FT W PP NC 1055328E USE N EDGE	SL 505
PALMDALE (1955)	2568.879	CHSL X IN W EDGE SMH 5FT S C/L AVE P + 2FT W C/L 20TH ST E	SL 506
PALMDALE (1955)	2568.318	RD MON IN WELL 8IN DN @ NE COR AVE P + 20TH ST E 50FT E + 30FT N C/L INT 10FT E PP NO 1055318E USE N EDGE	SL 507
PALMDALE (1955)	2557.827	CS MON IN WELL 12IN DN MKD 26FT E C/L INT AVE P + 25TH ST E MKD (1/4 SEC COR 18-19 R11W T6N) USE E EDGE	SL 508
PALMDALE (1955)	2551.147	CS MON 12IN DN @ C/L INT AVE P + 30TH ST E MKD (17-18-19-20 R11W T6N) USE N EDGE	SL 510
PALMDALE (1955)	2551.889	RD MON IN WELL 8IN DN @ NE COR AVE P + 30TH ST E 50FT E + 30FT N C/L INT + 10FT E PP NC 1055295E	SL 511
PALMDALE (1955)	2563.613	RDBM TAG IN CONC FTG OF COR FENCE POST OF THREE STRAND BARBED WIRE FENCE @ NE CCR AVE P-8 + 30TH ST E 81FT N + 30FT E C/L INT	SL 512
PALMDALE (1955)	2562.497	CS MON 24IN DN @ C/L INT 30TH ST E + AVE P-8 MKD (1/4 SEC COR 19-20 R11W T6N) NO WELL	SL 513
PALMDALE (1955)	2578.429	CS MON IN WELL 14IN DN @ C/L INT AVE Q + 30TH ST E MKD (19-20 29-30 R11W T6N) USE W EDGE	SL 514
PALMDALE (1955)	2580.347	L+BRAD 2FT S BCR @ SE CCR AVE Q + 30TH ST E 40FT E + 72FT S OF C/L INT	SL 515
PALMDALE (1955)	2550.721	CS MON 18IN DN @ C/L INT AVE P + 35TH ST E MKD (1/4 COR SEC 17-20 R11W T6N)	SL 516
PALMDALE (1955)	2552.351	RDBM MON IN WELL 6IN DN 40FT E C/L 35TH ST E + 20FT N C/L AVE P CN POLE LINE 10FT E PP NO 1055284E	SL 517
PALMDALE (1955)	2550.657	CS MON IN WELL 16IN DN @ C/L INT AVE P + 40TH ST E MKD (SEC COR 16-17-20-21 R11W T6N) USE N EDGE	SL 518
PALMDALE (1955)	2552.551	RDBM MON IN WELL 6IN DN 48FT E C/L 40TH ST E + 30FT N C/L AVE P ON POLE LINE 6FT E PP NO 1055272E	SL 519
PALMDALE (1955)	2556.075	CS MON 24IN DN @ C/L INT AVE P + 45TH ST E MKD (1/4 COR 16-21 R11W T6N)	SL 520
PALMDALE (1955)	2557.756	RD BM MON IN WELL 6IN DN 100FT E C/L 45TH ST E + 45FT S C/L AVE P	SL 521
PALMDALE (1955)	2560.393	RDBM MON IN WELL 6IN DN 100FT W C/L 50TH ST E + 4FT S C/L AVE P	SL 522

