

Devil's Gate Reservoir Restoration Project



Public Works
LOS ANGELES COUNTY



Presented by: Mark Gim & Fahim Rahimi

Agenda

- Construction Overview
- Habitat Restoration Overview
- Habitat Restoration Site protection



Sediment Removal Update

112 Hauling Days in 2020

~532,000 cy of Sediment Material
Removed in 2020

~980,000 cy in Total To-date

Sediment Removal Schedule:

- May 21, 2019 – November 15, 2019
- June 4, 2020 – November 20, 2020
- April – November (2021, 2022)





2020 Haul Truck Monitoring...

- Last Year PW Implemented Phase II Monitoring Program with Collaboration and Partnership with
 - California Air Resources Board
 - University of California, Riverside Center for Environmental Research and Technology
 - Community stakeholders (LCF4HealthyAir)
- Phase II Tracked and Measured Emissions Directly from Haul Trucks
 - Performed a diagnostic reading download
 - Installed a Device to Record Emission Performance



2021 Season Planning

Pre-Hauling Activities:

- Evaluate and Improve Hauling Fleet
- Develop Truck Trip Plan
- Evaluate In-reservoir Truck Time and Idling Time
- In-reservoir Noise Review And Assessment





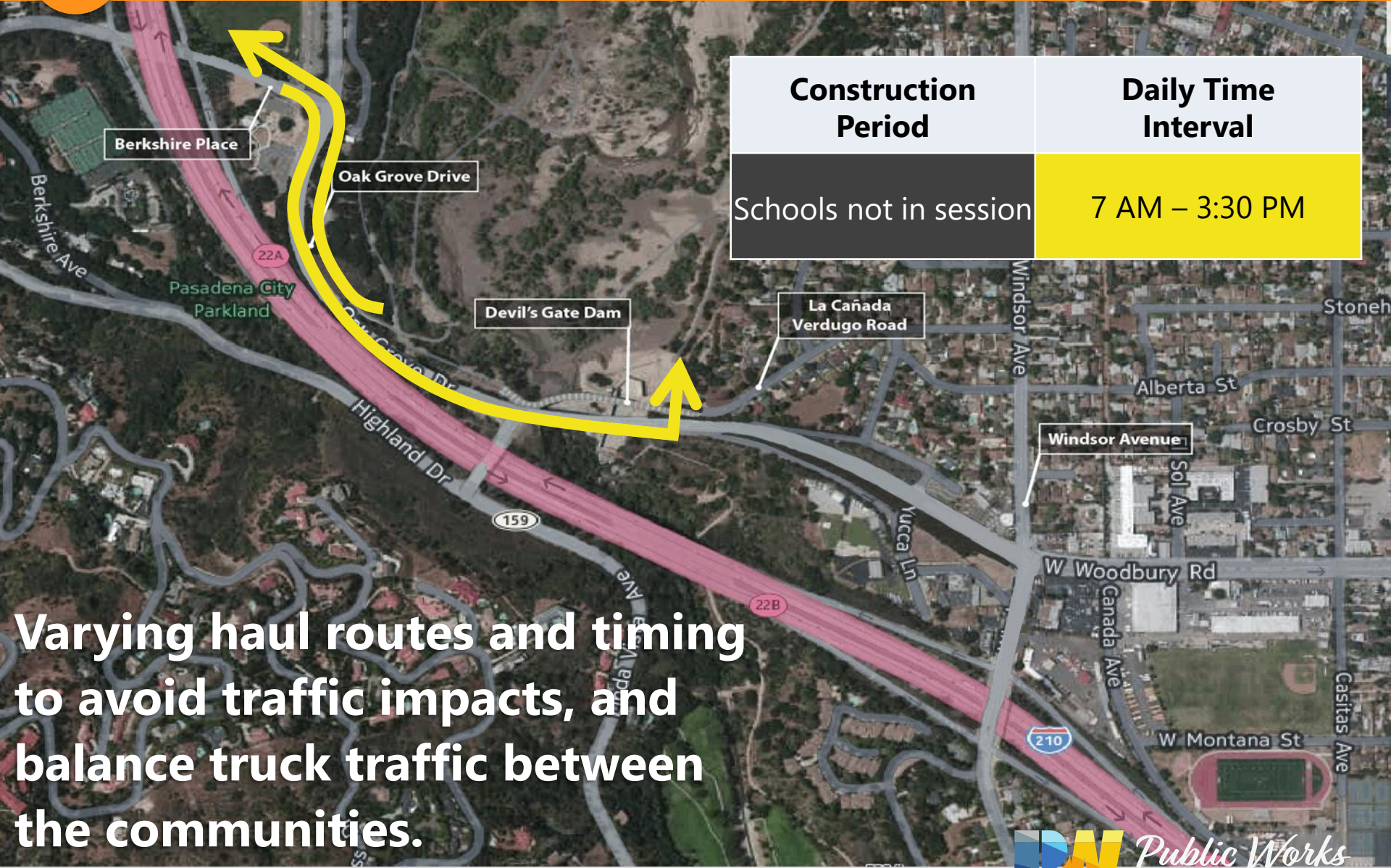
2021 Hauling Schedule

- Tentative Schedule to Start Mid-April 2021
- Approximately 95 Trucks Will Be Used to Make a Maximum of 425 Roundtrip Daily
- Hauling Hours:
 - Monday-Friday, 7:00 am to 3:30 pm
 - No Work:
 - Weekends
 - Holidays
 - Red Flag Warning Days
 - Major Rose Bowl Events





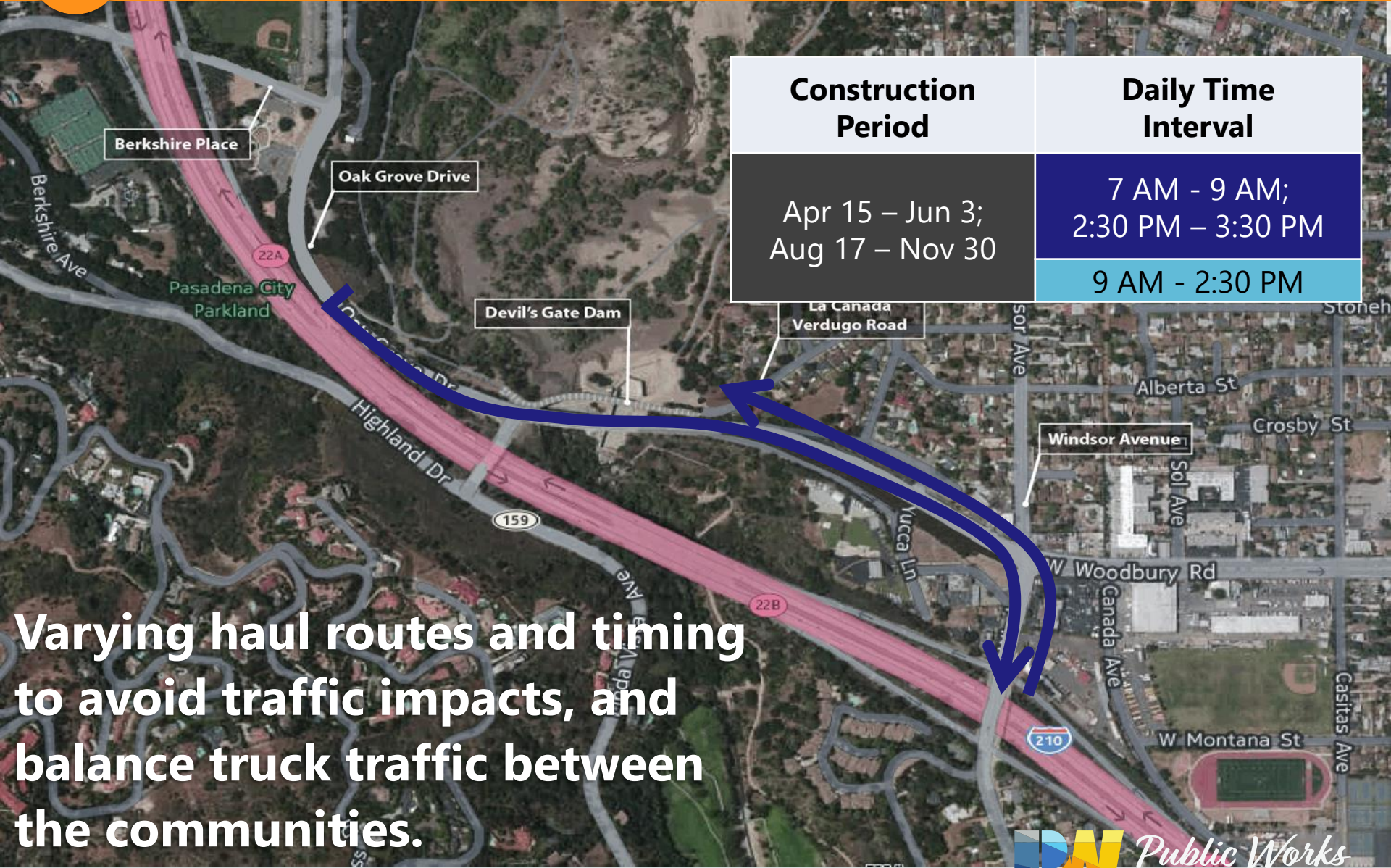
Taking a Community-First Approach



Varying haul routes and timing to avoid traffic impacts, and balance truck traffic between the communities.



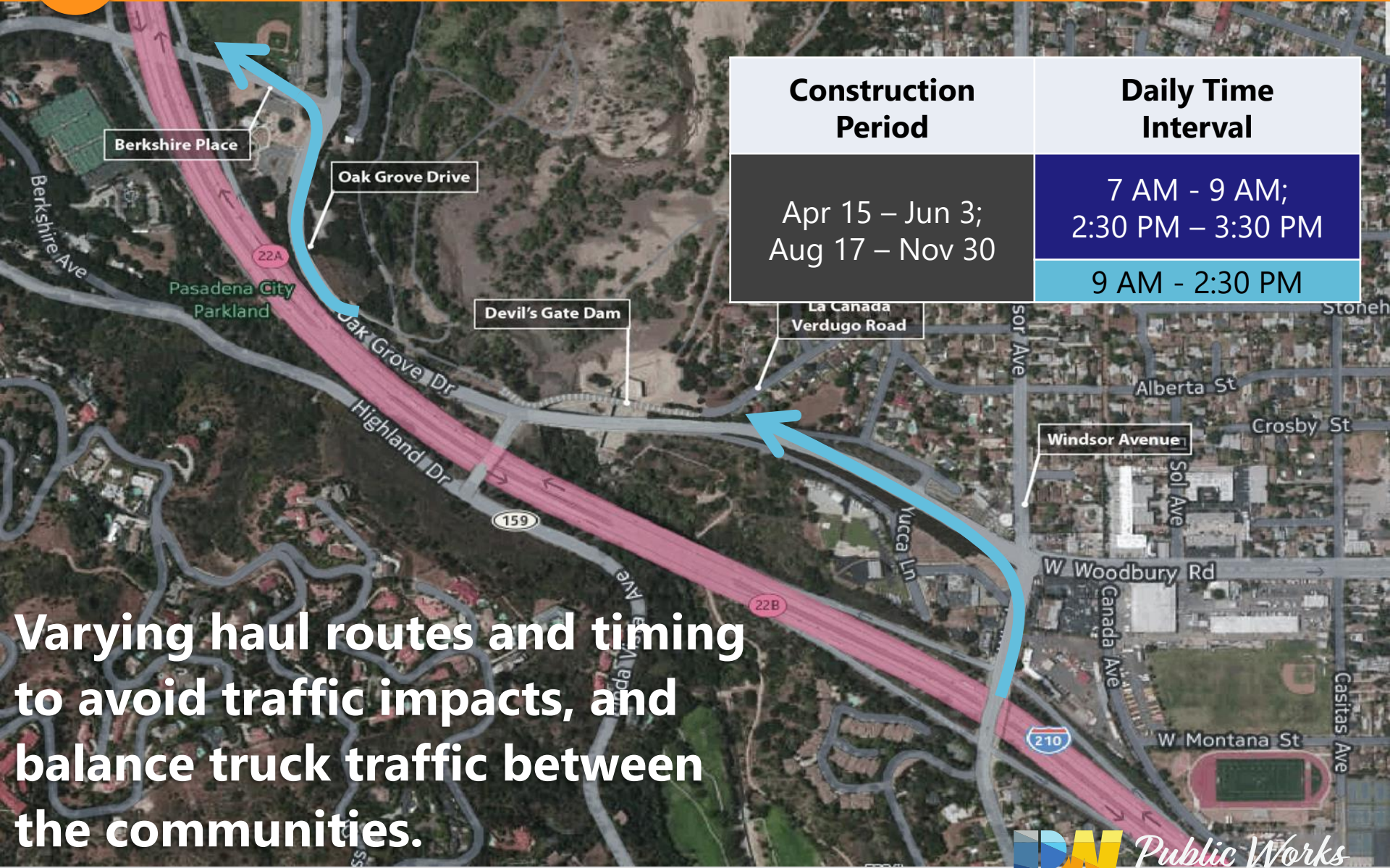
Taking a Community-First Approach



Varying haul routes and timing to avoid traffic impacts, and balance truck traffic between the communities.



Taking a Community-First Approach



Construction Period	Daily Time Interval
Apr 15 – Jun 3; Aug 17 – Nov 30	7 AM - 9 AM; 2:30 PM – 3:30 PM
	9 AM - 2:30 PM

Varying haul routes and timing to avoid traffic impacts, and balance truck traffic between the communities.



Trail Closures

- Trails Temporarily Closed During Weekdays, From 6:45 am to 3:30 pm, Daily.
- Trails Open on the Weekends and Holidays.





Continue to Implement Responsible Sediment Hauling

- Dust Control Measures
- Double Tire Wash
- Maintain Proper Free Board
- Cleaning Outside Trucks





Other Public Safety Measures...

Air Quality Network in place

“real time” Air Monitoring Network:

<https://www.devilsgateairquality.com/>

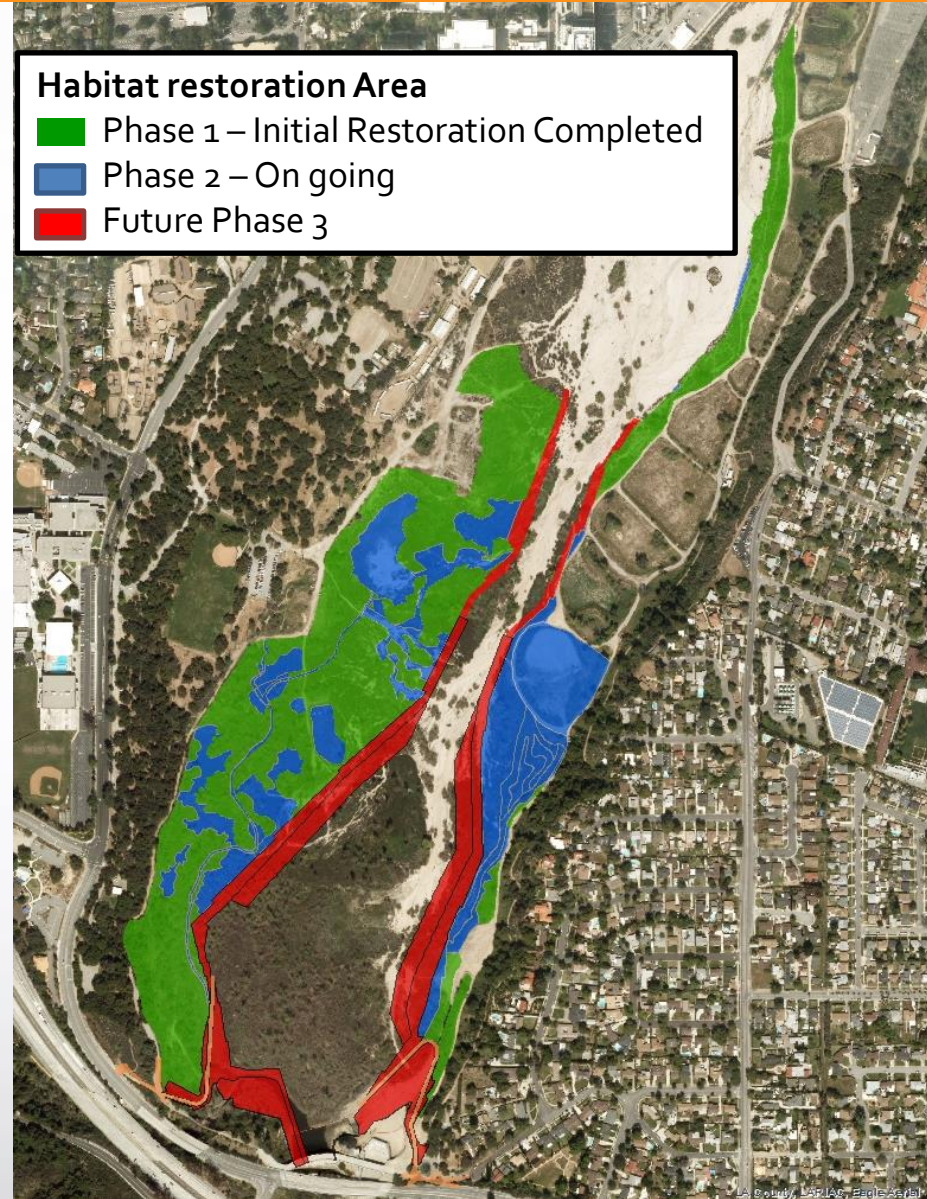
Rigorous Monitoring of Hauling Trucks





Habitat Restoration

- Ongoing weed abatement
- Irrigation installation
- Planted to date:
 - 300 coast live oak acorns
 - 10,346 container plants
 - ~713 lbs. of seed






DEVIL'S GATE RESERVOIR RESTORATION PROJECT Proposed Habitat Restoration Area Signage

20 INCH

20 INCH

HABITAT RESTORATION AREA

Help protect native plants and wildlife, including the endangered least Bell's vireo, by staying on established trails. Unauthorized impacts to the least Bell's vireo are subject to penalties under the U.S. and CA Endangered Species Acts.





Least Bell's Vireo

Unauthorized entry prohibited

No trespassing - CA Penal Code 602
No bicycles or unauthorized motor vehicles allowed on park trails - PMC 3.24.110.15
No person shall cut or remove any wood, flowers, trees, shrubs, sand, or gravel except by permit from the director - PMC 3.24.110

Pasadena Police Dept. (626)744-4241








Wood Post & Steel Cable



Talk to Us

Questions?

For More Information:

Subscribe to our e-mail list to receive updates on the project.



DevilsGateProject.com



devilsgateproject@pw.lacounty.gov



Hotline: (626) 458-2507



Public Works
LOS ANGELES COUNTY

