

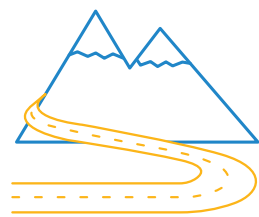
## WHERE ARE COLLISIONS HAPPENING?

The County of Los Angeles maintains nearly 3,400 miles<sup>23</sup> of roads that traverse urban, suburban, rural-mountain, and desert areas. This creates a level of complexity in achieving the Vision Zero goal because unincorporated County roadways vary dramatically based on the terrain and surrounding land uses.

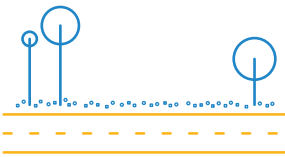
Unincorporated County roadways may be:



- Fully developed with concrete curbs, with or without sidewalks, in densely populated communities;



- Narrow, winding, with two lanes in the mountains; or



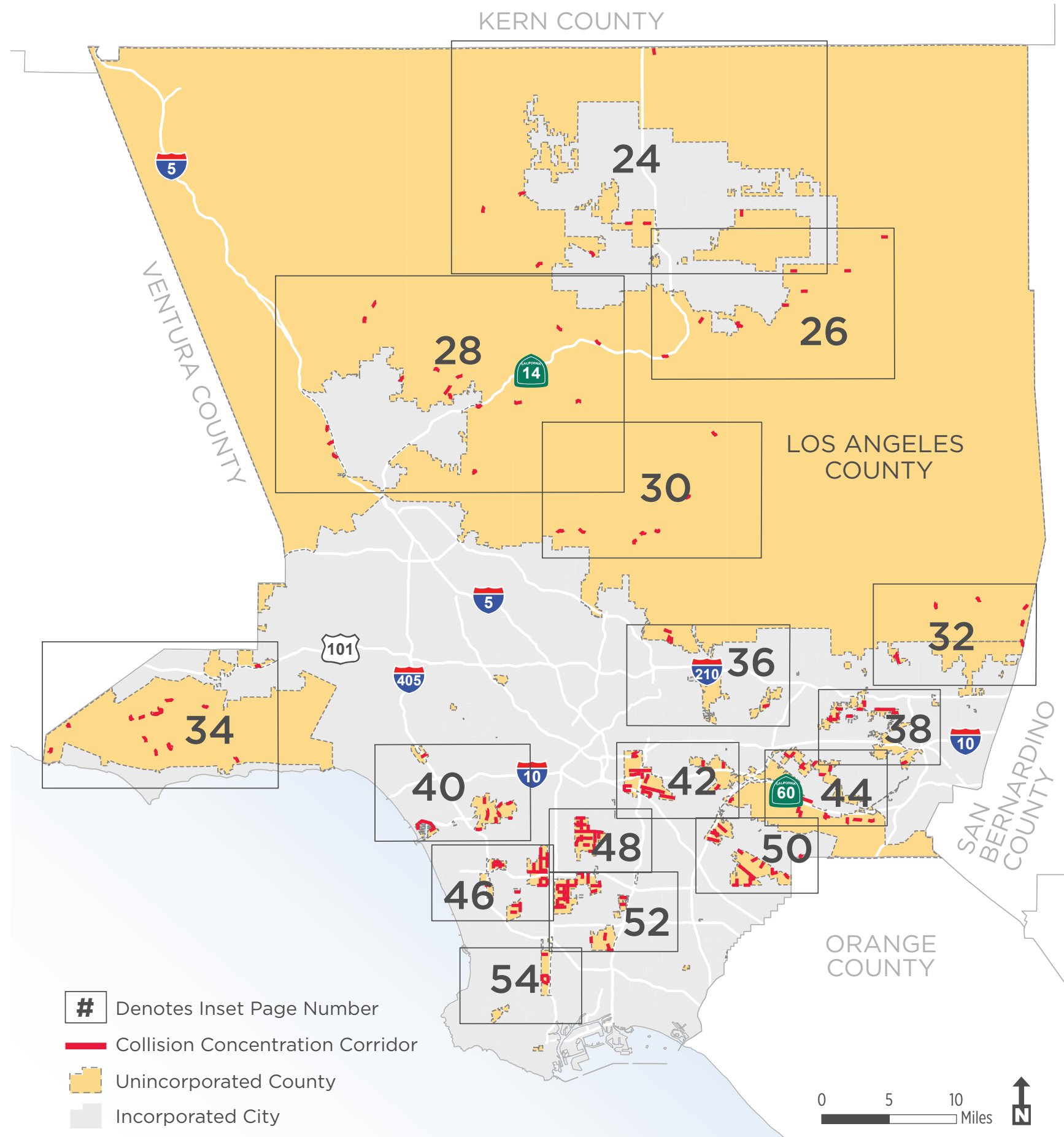
- Generally flat, straight, with gravel or sand shoulders in the desert areas.

Collision data for the five year period between 2013-2017 showed that fatal and severe injury collisions occurred in every unincorporated community with the majority having occurred in urbanized areas.

## WHAT IS A COLLISION CONCENTRATION CORRIDOR?

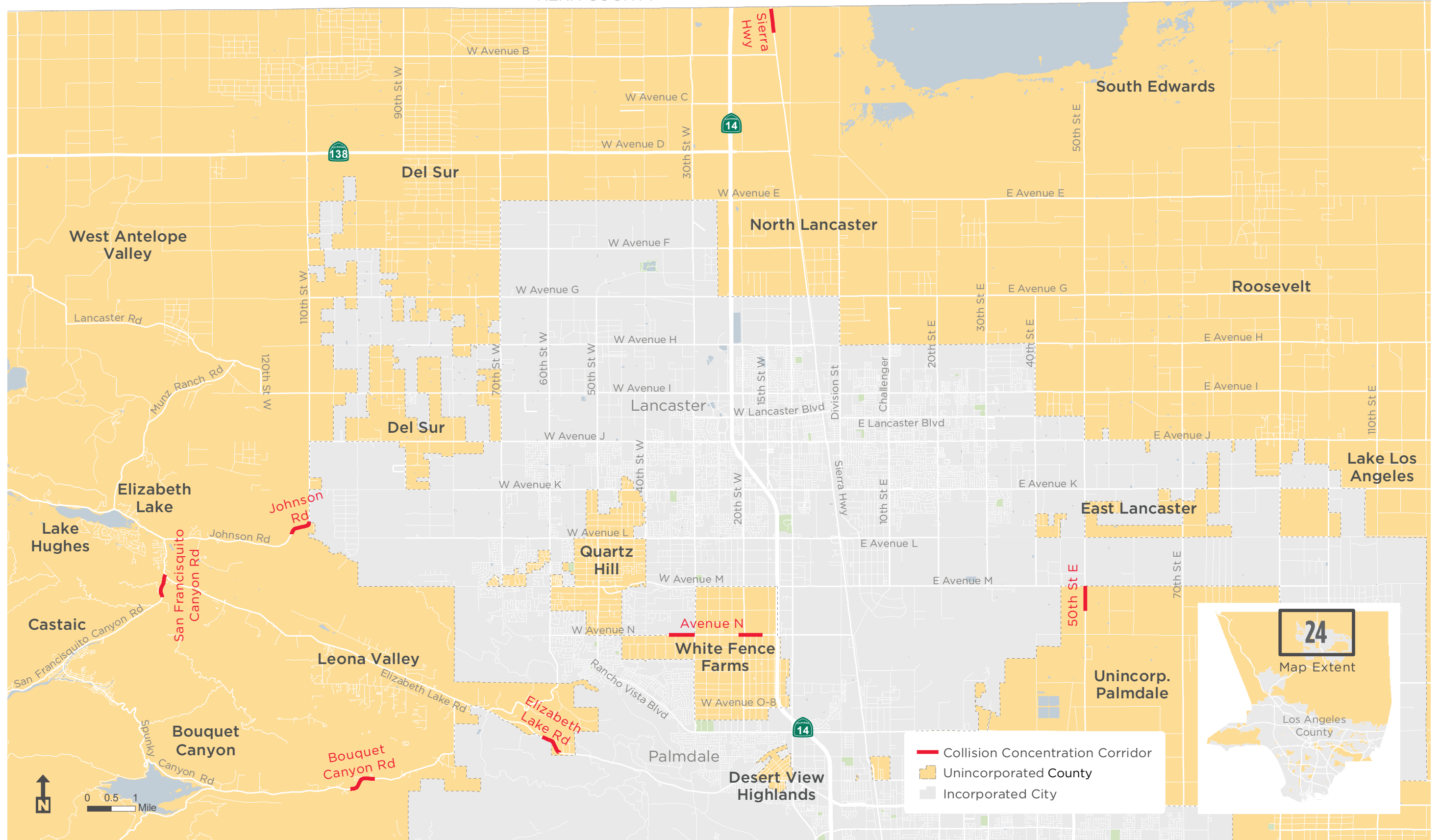
Further analysis of collision data identified where there are concentrations of fatal and severe injury collisions. A Collision Concentration Corridor is any half-mile roadway segment that contained three or more fatal or severe injury collisions between January 1, 2013 and December 31, 2017.

Fifty percent of fatal and severe injury collisions occurred on approximately 125 miles of roadways - about 3.7% of the roadways maintained by the County.<sup>24</sup>

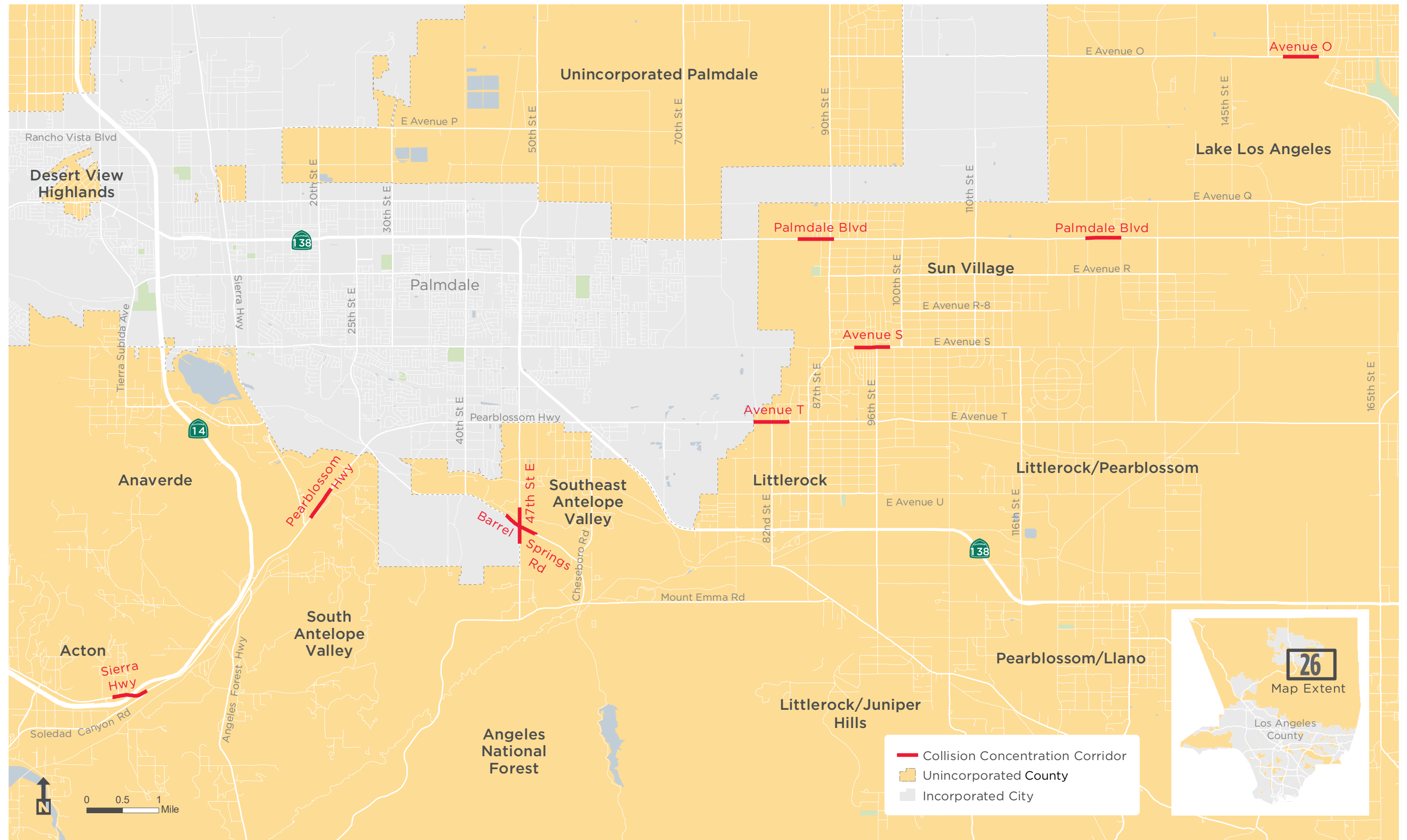


COLLISION CONCENTRATION CORRIDORS - INSET 24

KERN COUNTY



COLLISION CONCENTRATION CORRIDORS - INSET 26



Desert View Highlands

Unincorporated Palmdale

Lake Los Angeles

Palmdale

Sun Village

Anaverde

Southeast Antelope Valley

Littlerock

Littlerock/Pearblossom

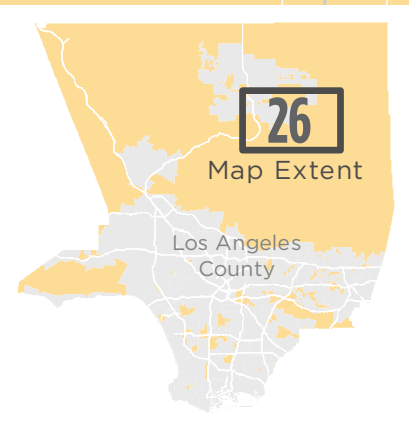
Acton

South Antelope Valley

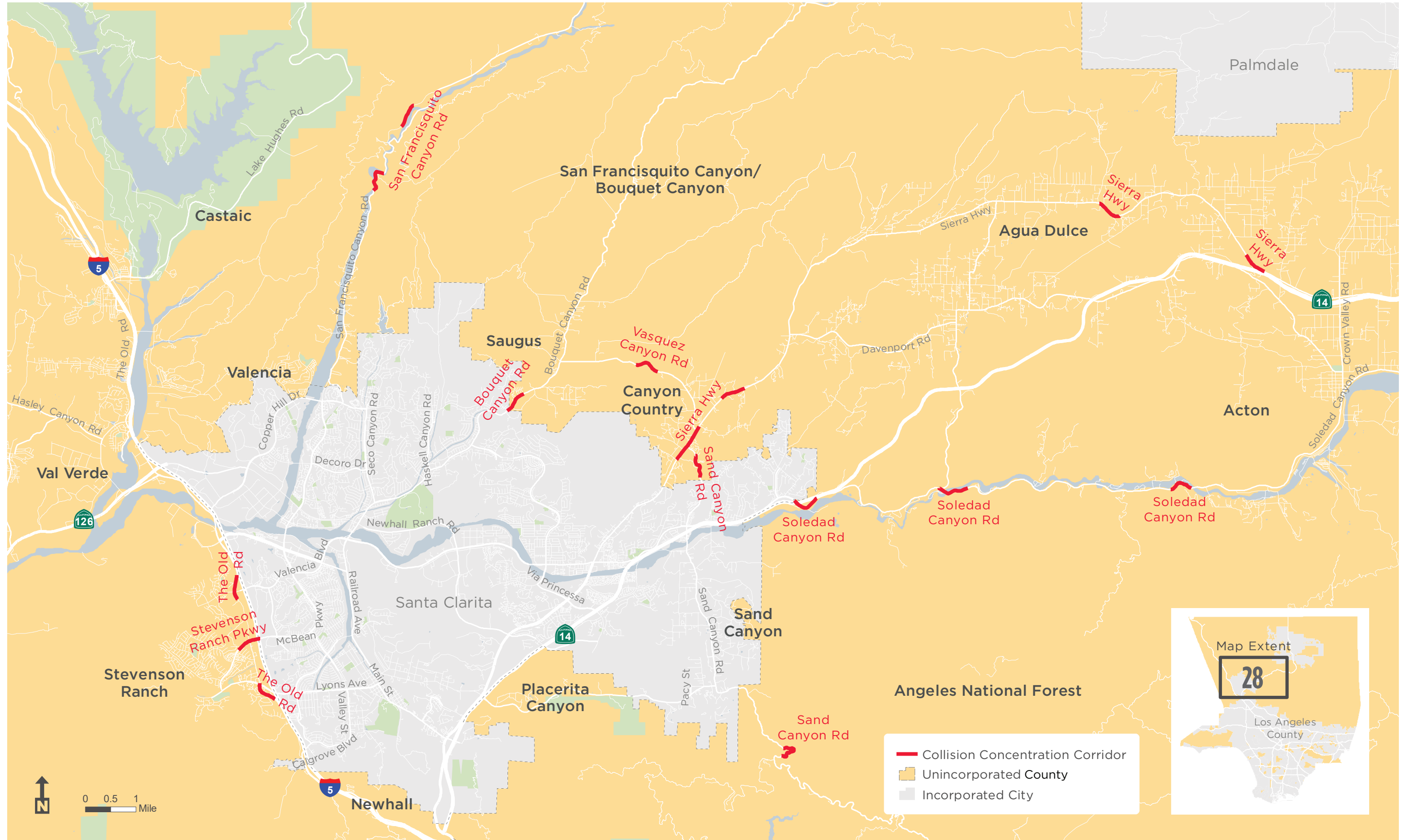
Angeles National Forest

Littlerock/Juniper Hills

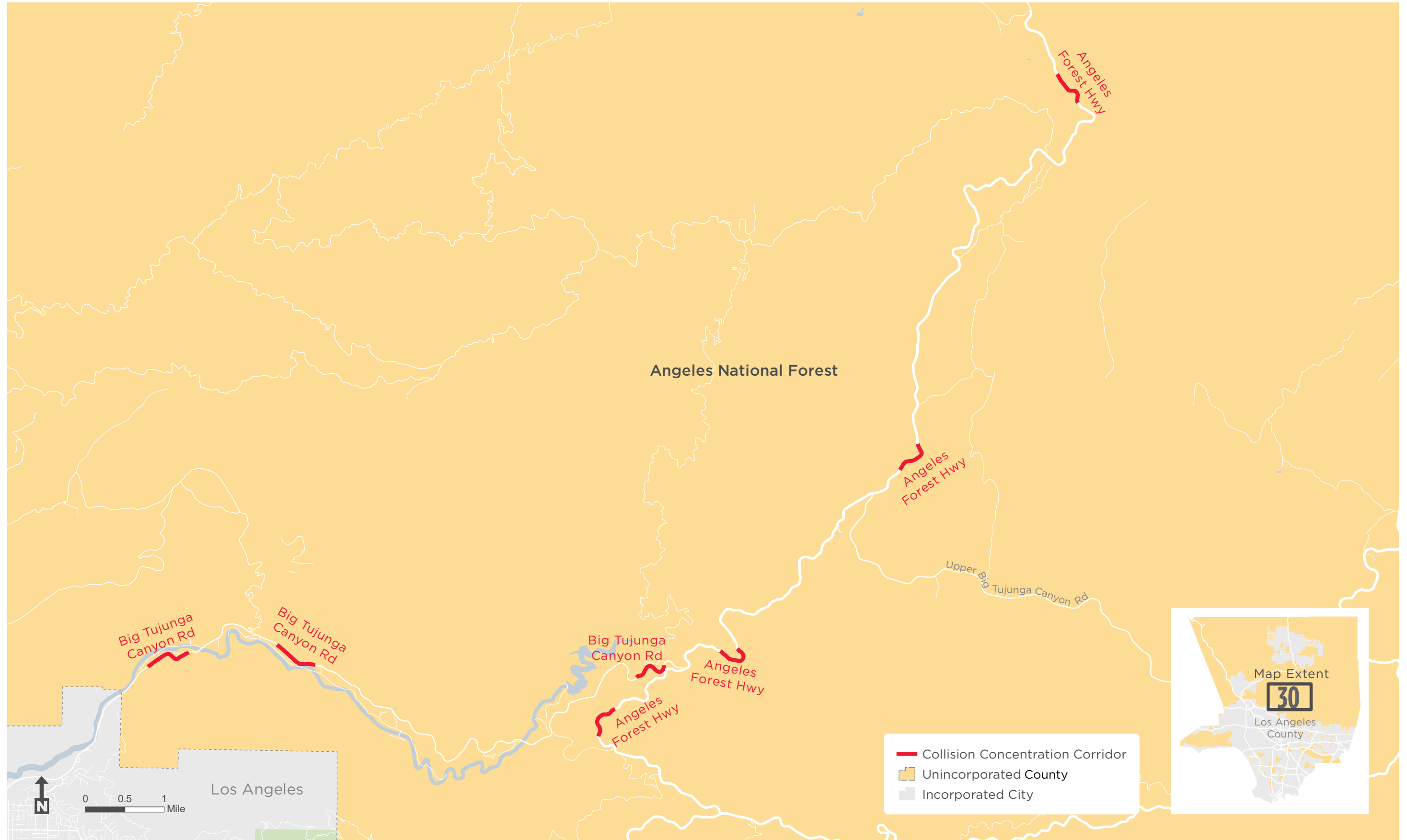
Pearblossom/Llano



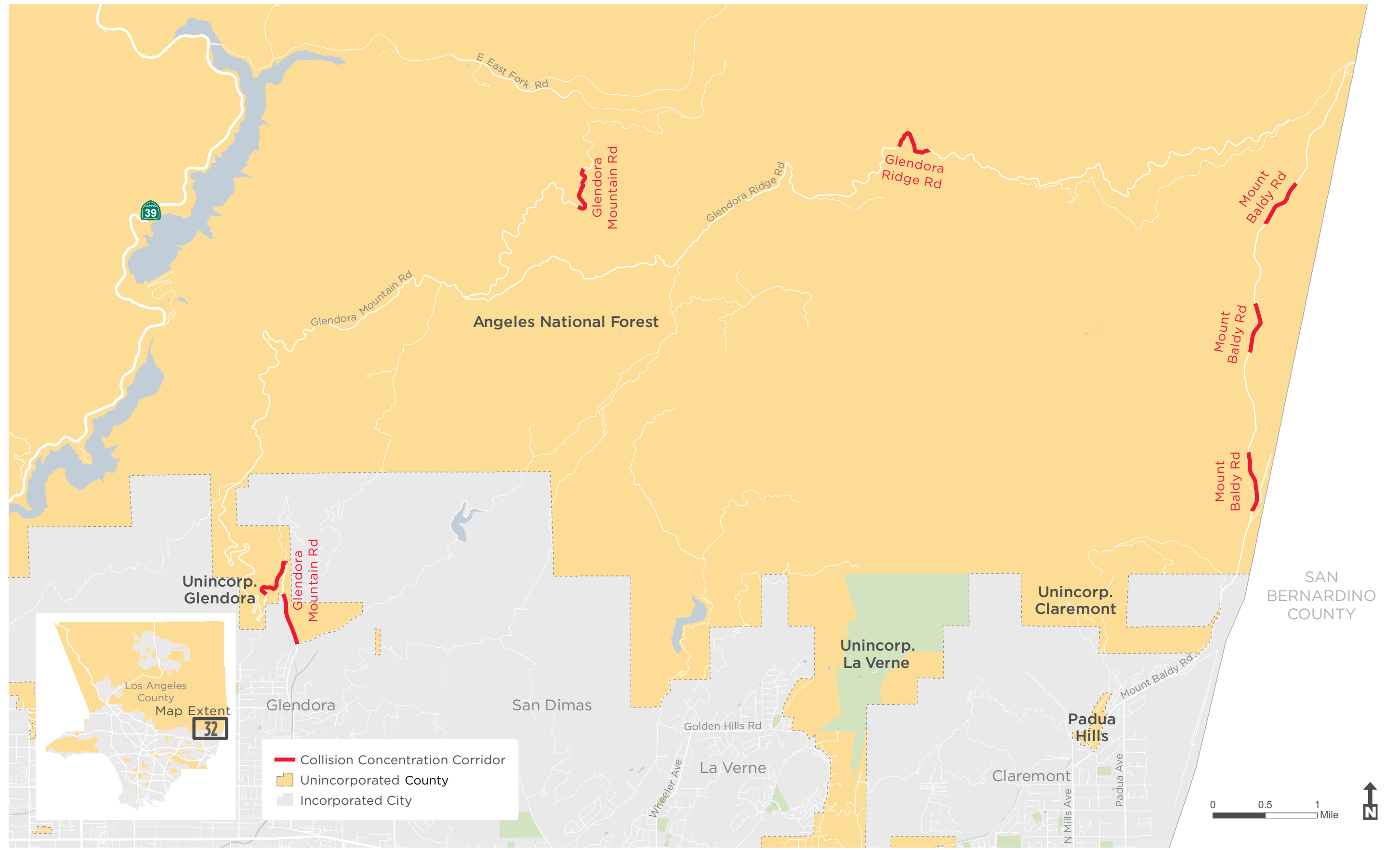
COLLISION CONCENTRATION CORRIDORS - INSET 28



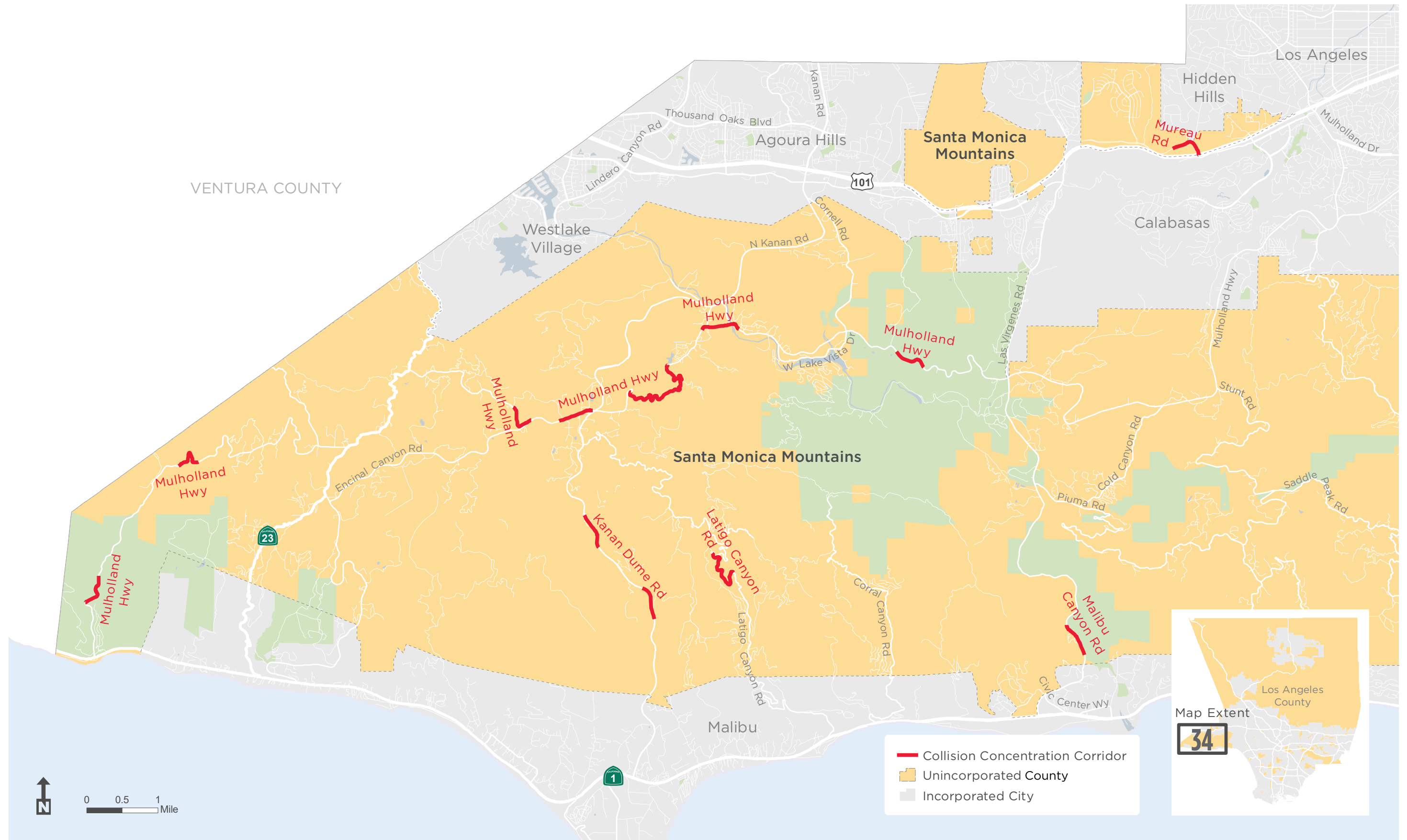
COLLISION CONCENTRATION CORRIDORS - INSET 30



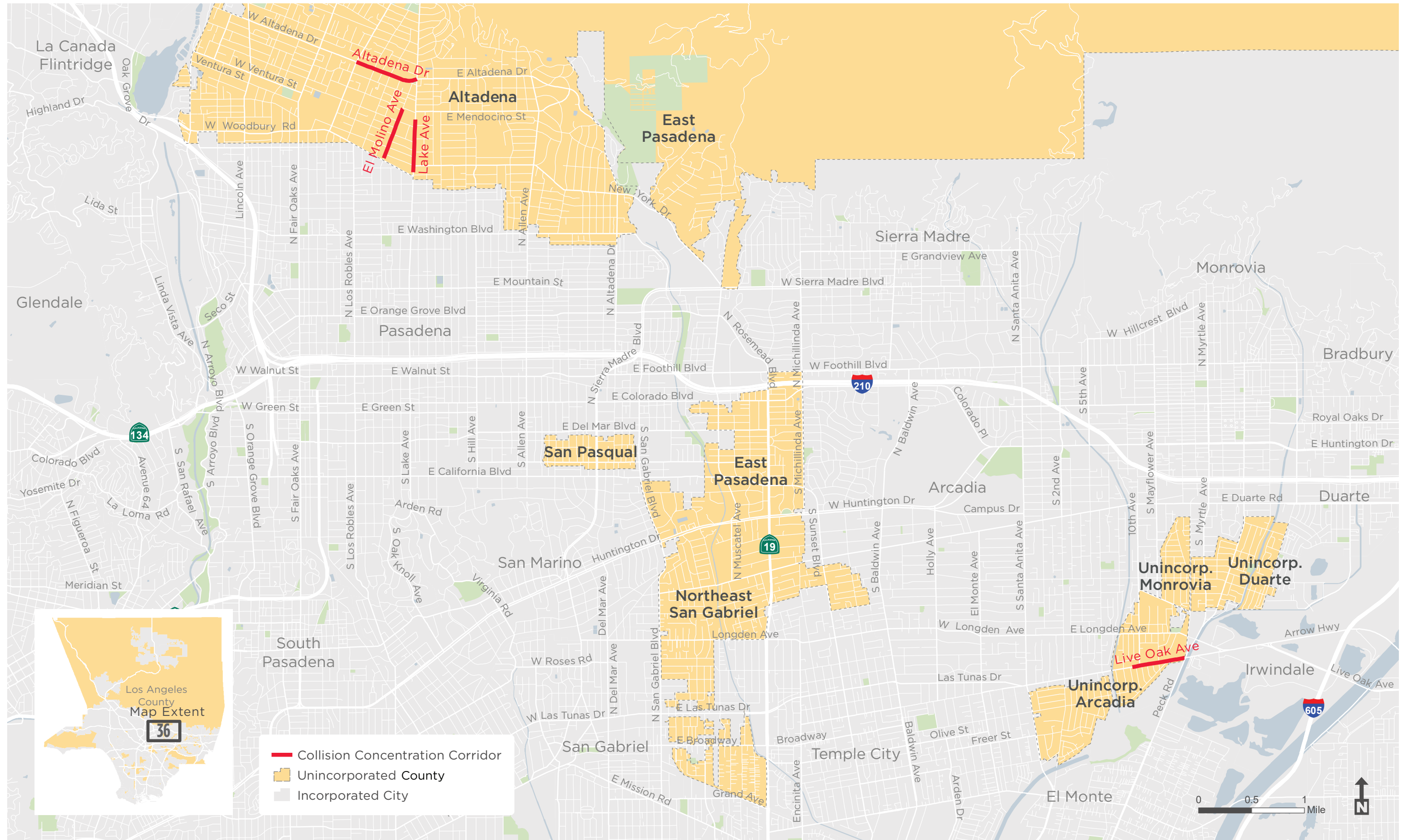
COLLISION CONCENTRATION CORRIDORS - INSET 32



COLLISION CONCENTRATION CORRIDORS - INSET 34

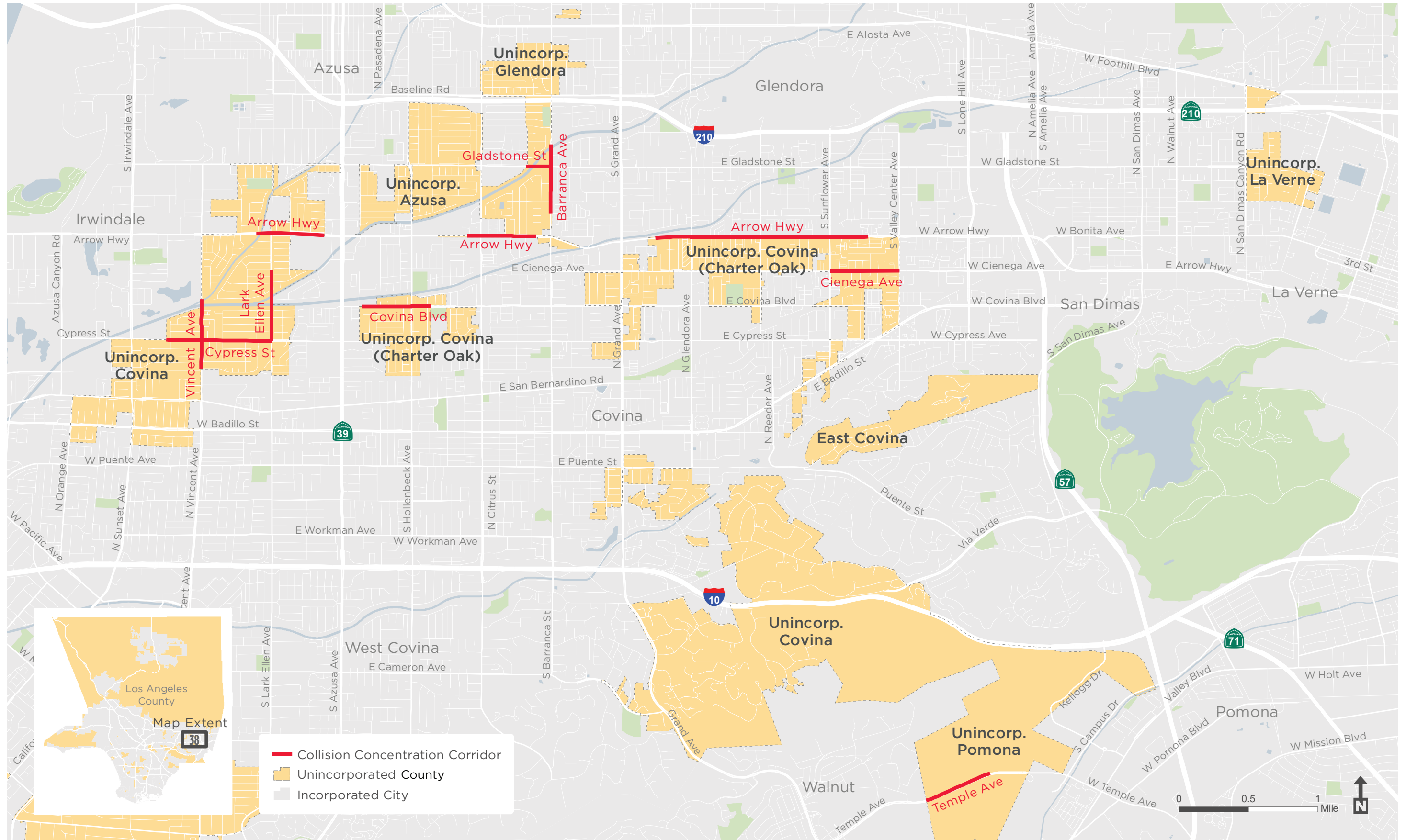


**COLLISION CONCENTRATION CORRIDORS - INSET 36**

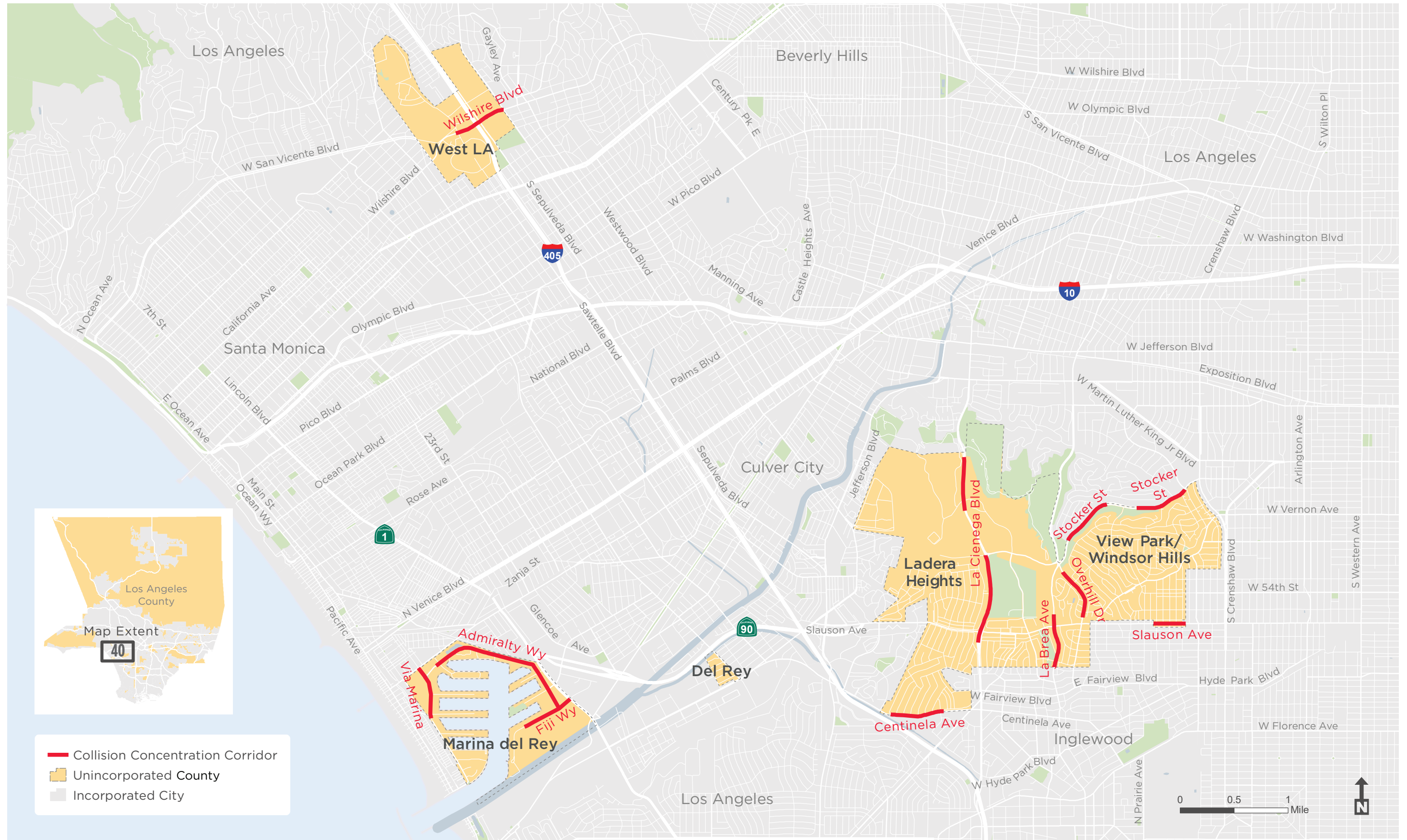




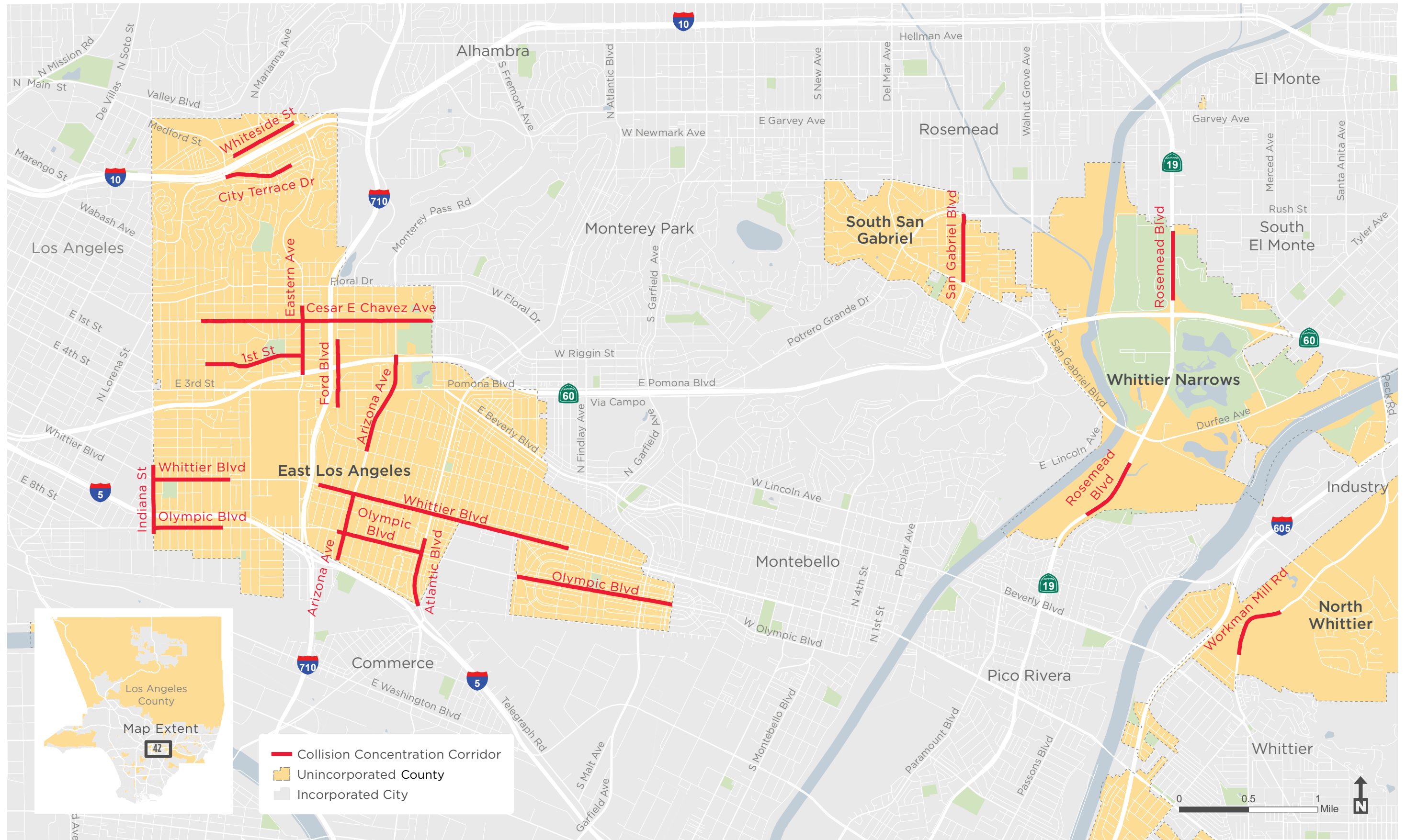
**COLLISION CONCENTRATION CORRIDORS - INSET 38**



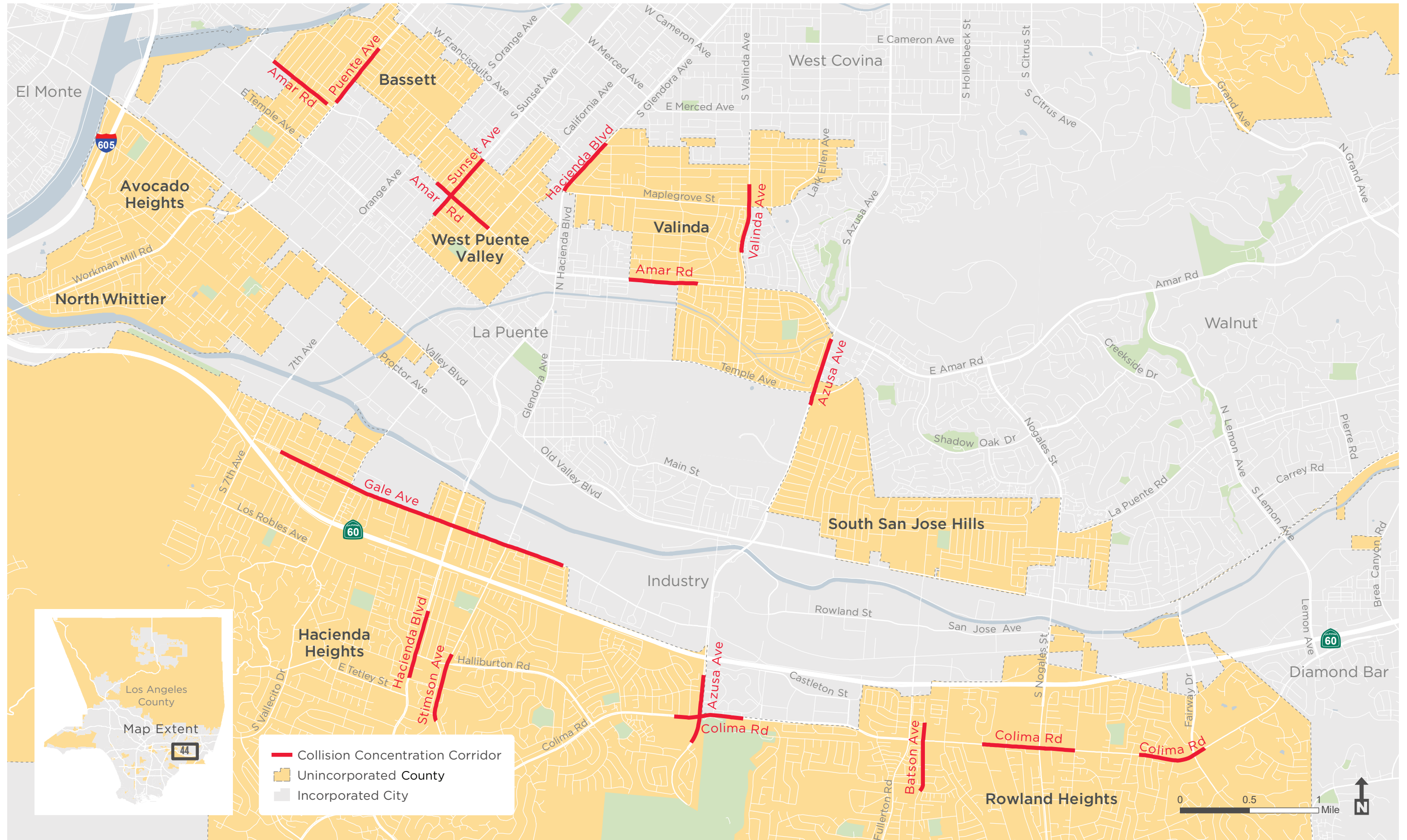
**COLLISION CONCENTRATION CORRIDORS - INSET 40**



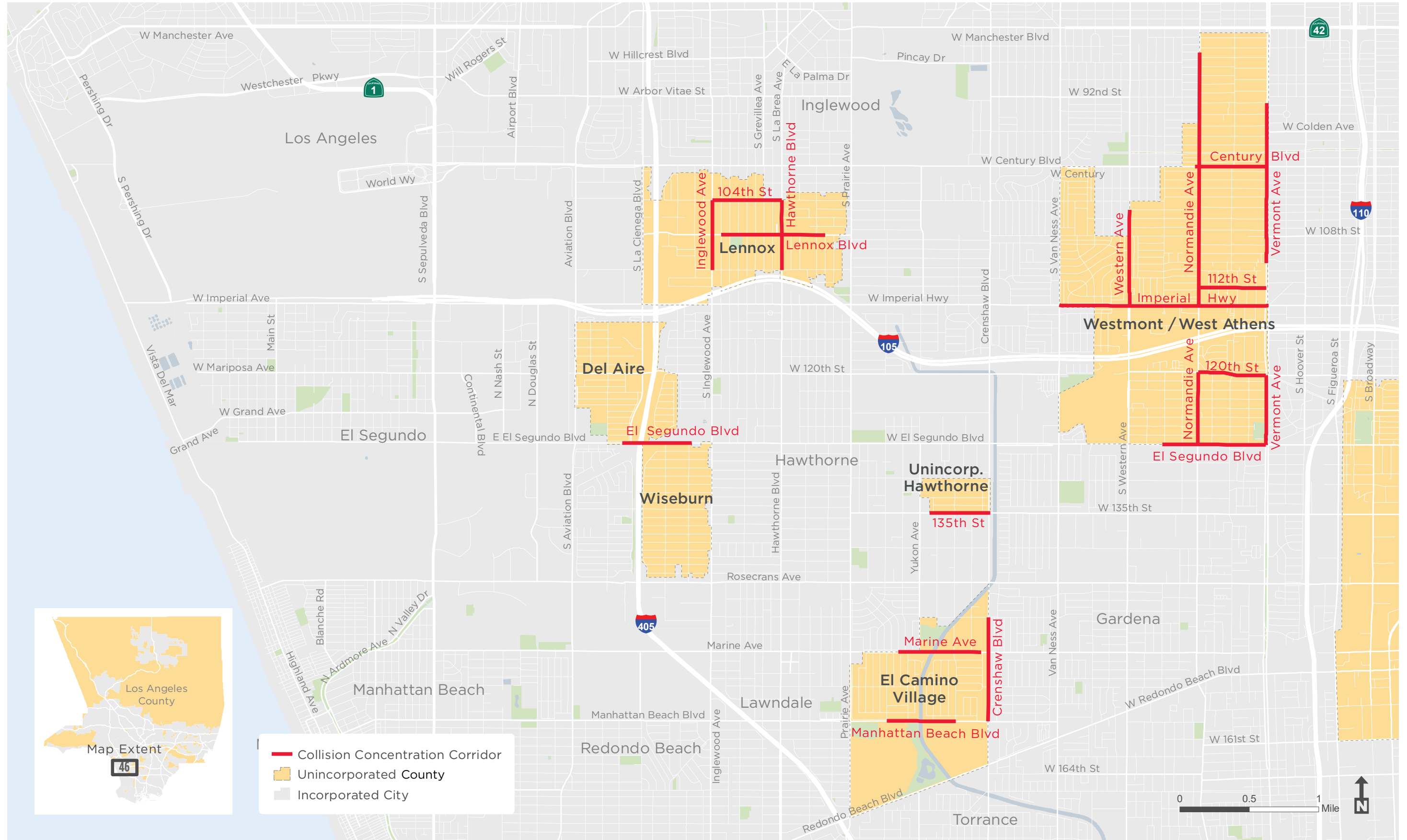
**COLLISION CONCENTRATION CORRIDORS - INSET 42**



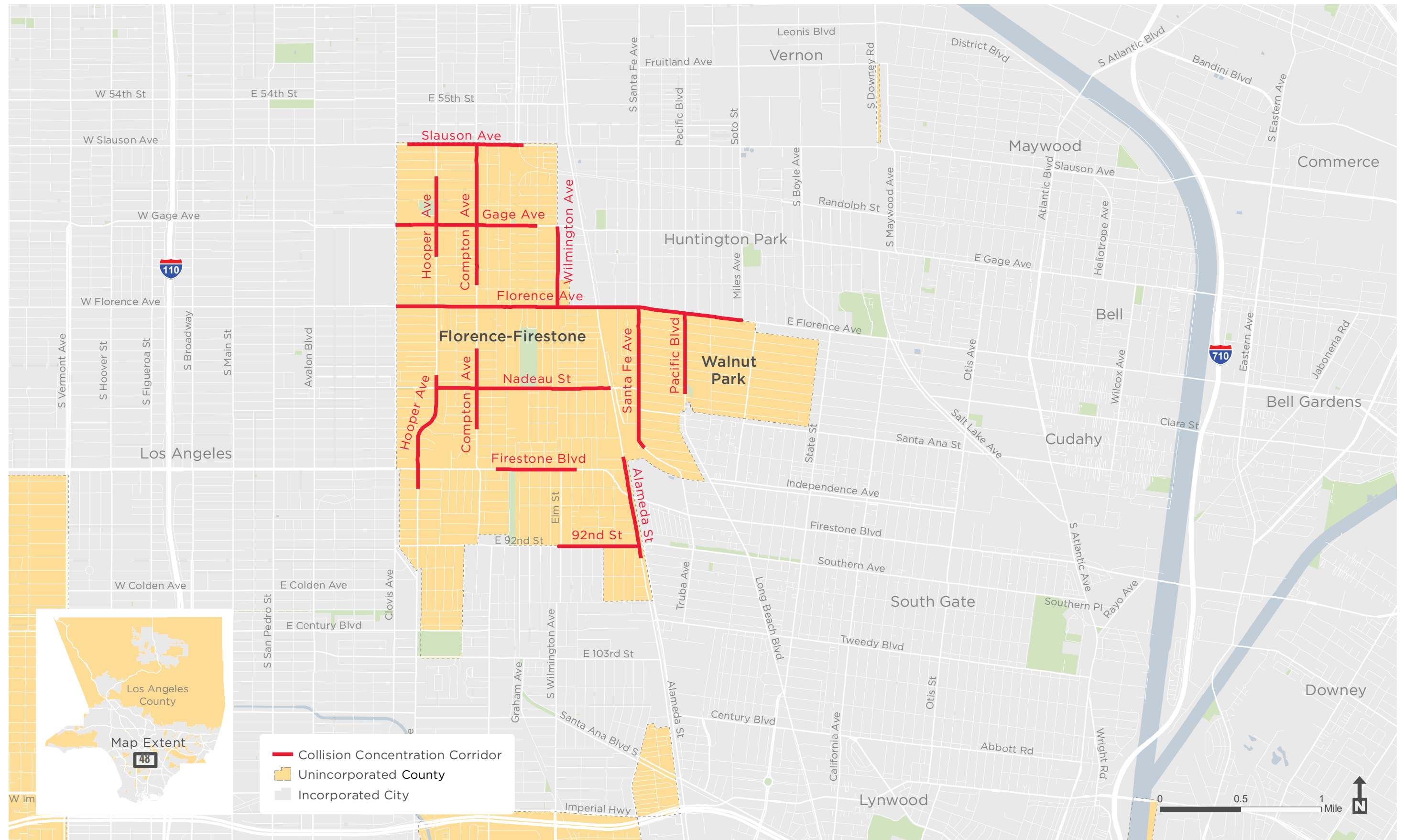
COLLISION CONCENTRATION CORRIDORS - INSET 44



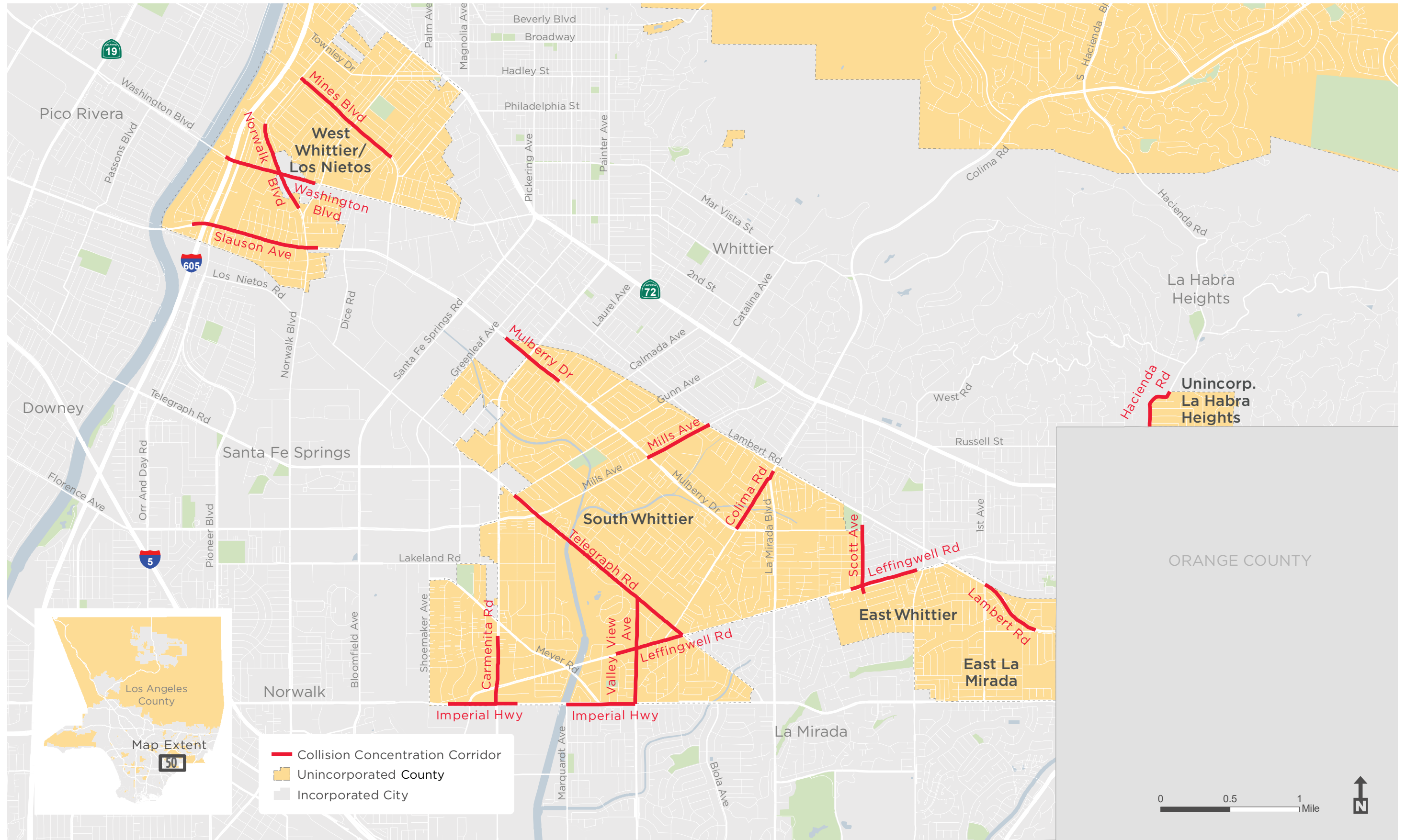
**COLLISION CONCENTRATION CORRIDORS - INSET 46**



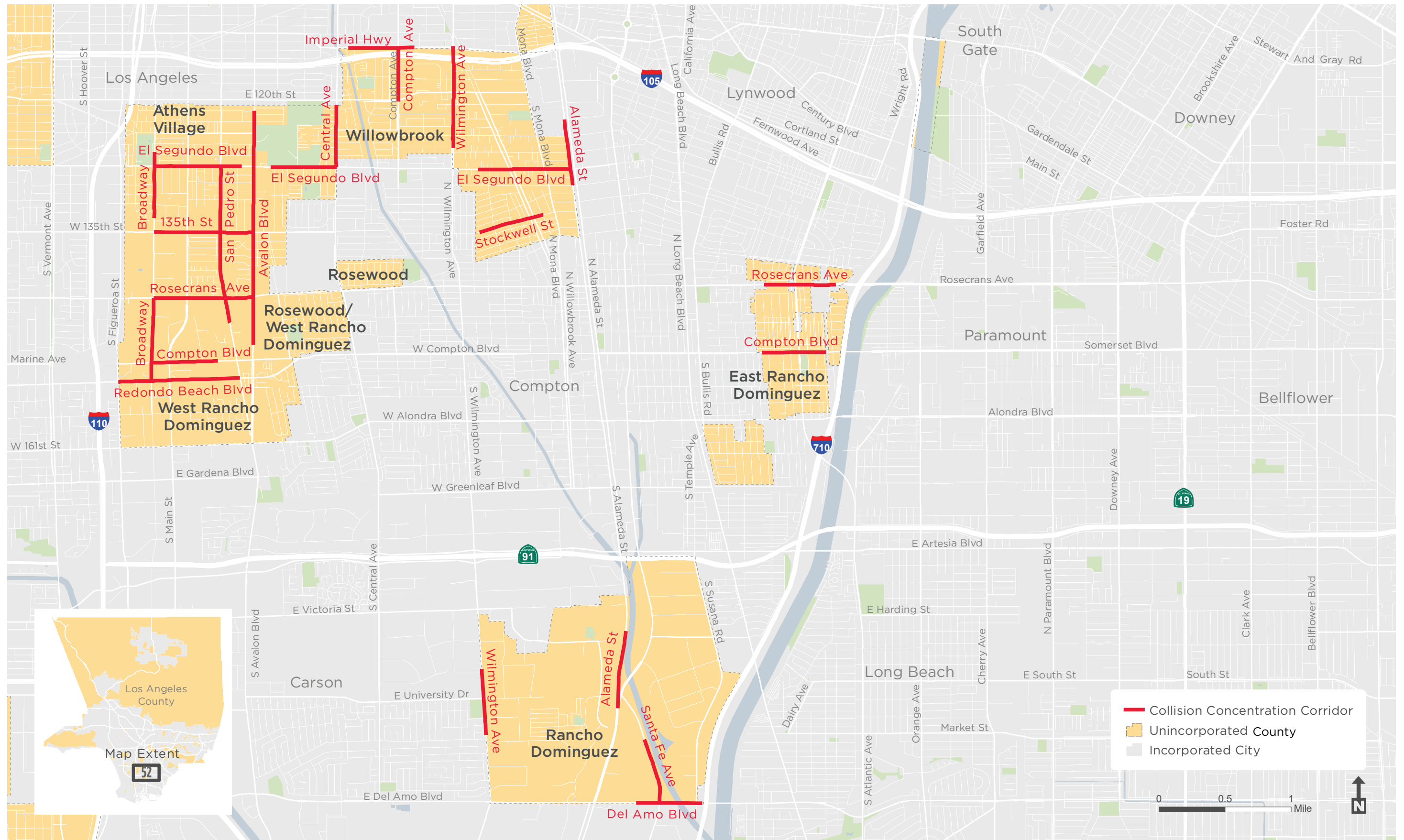
**COLLISION CONCENTRATION CORRIDORS - INSET 48**



**COLLISION CONCENTRATION CORRIDORS - INSET 50**



**COLLISION CONCENTRATION CORRIDORS - INSET 52**





**COLLISION CONCENTRATION CORRIDORS - INSET 54**

