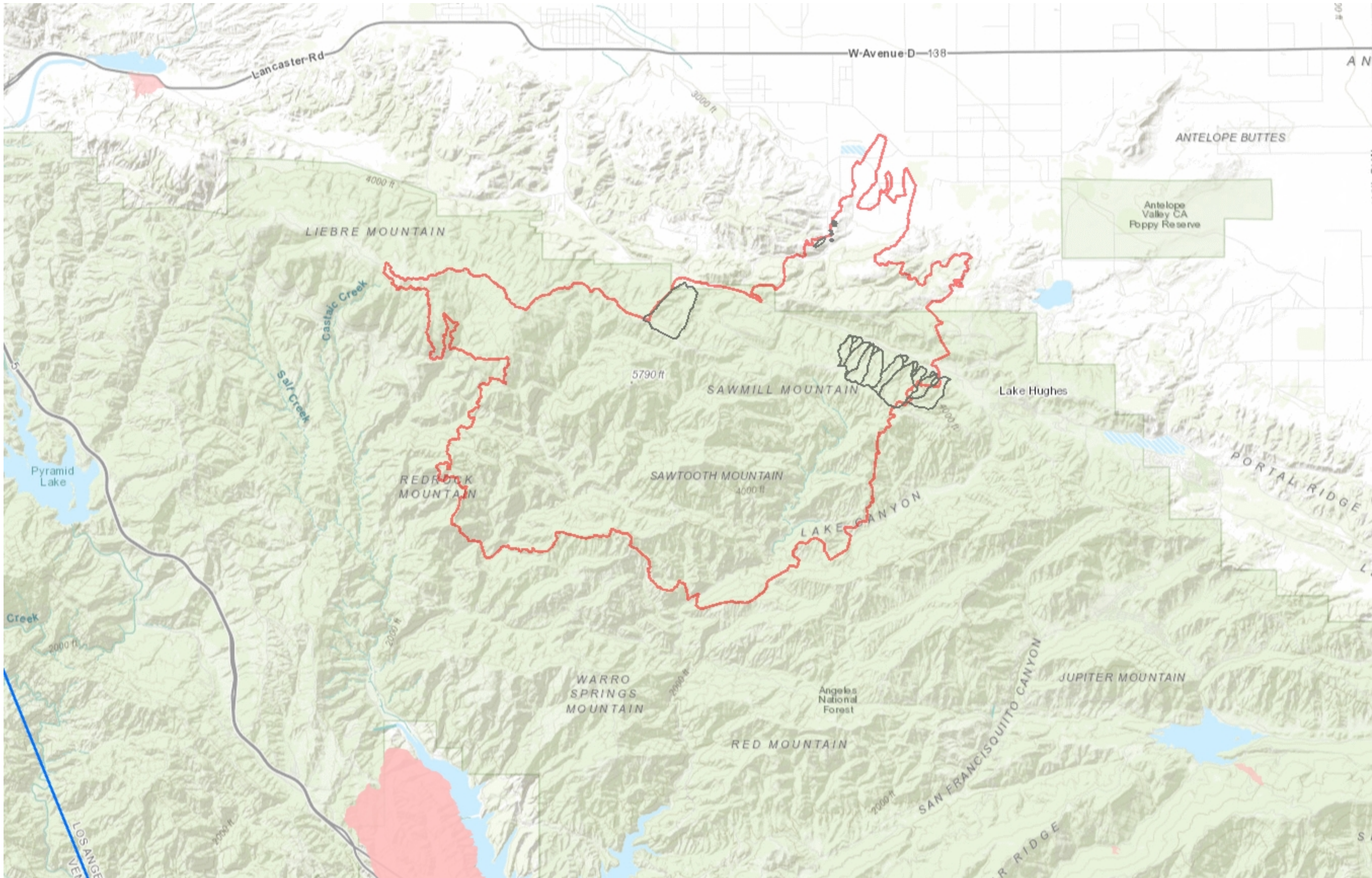


Lake Fire Burned Area Map

Legend

- 2021 Wildfire Perimeters (NIFS)
- Watershed Subareas
- Lake Fire Perimeter
- LA County Boundary



1: 144,448



4.6 0 2.28 4.6 Miles

WGS_1984_Web_Mercator_Auxiliary_Sphere
© Latitude Geographics Group Ltd.

DISCLAIMER: Due to the method, procedure, and assumptions used to develop the debris flow areas, the limits of debris flow shown are approximate and should be used as a guideline for planning purposes. Actual debris flow areas will depend on actual storm conditions and may differ from the areas shown on the map. We make no warranties in relation to any future debris flow events. This map is not to be used for navigation. Debris Flow Forecasts are posted to the Internet on Public Works' Fire Disaster Information website: <http://pw.lacounty.gov/wrd/Fire/>

Notes

This map was automatically generated using Geocortex Essentials.